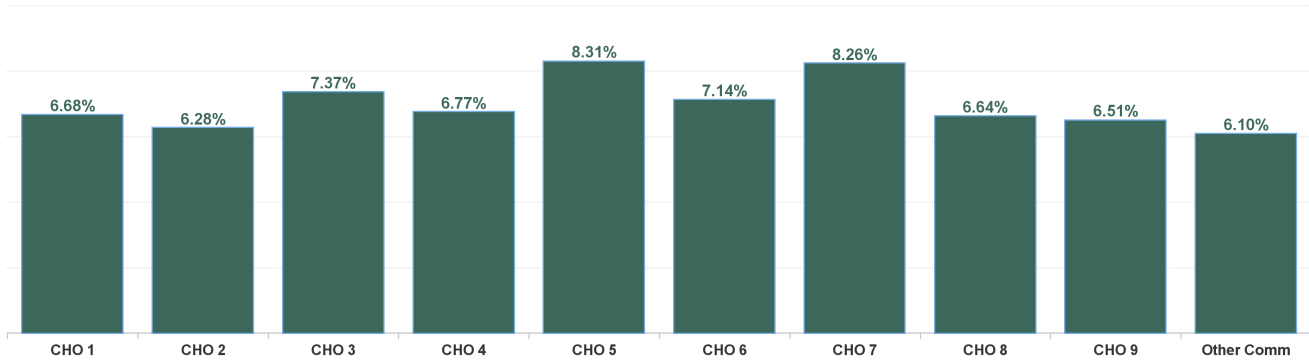


July 2024

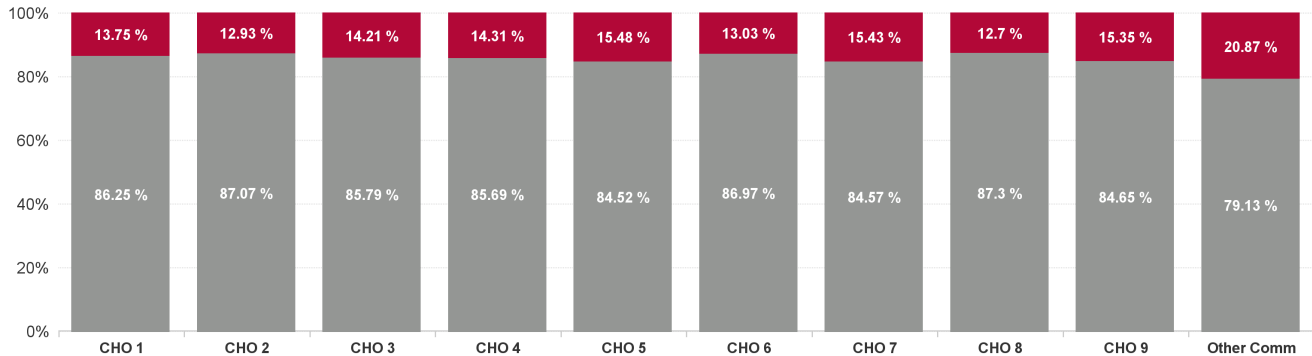
Health Service Absence Rate - by Staff Category: Jul 2024	Certified absence	Self-certified absence	Non Covid-19 absence	Covid-19 Absence	Total absence rate	% Non Covid-19 absence	% Covid-19 absence
PC	5.64%	0.42%	6.06%	1.01%	7.07%	85.70%	14.30%
Medical & Dental	3.27%	0.20%	3.47%	0.68%	4.16%	83.55%	16.45%
Nursing & Midwifery	6.47%	0.37%	6.84%	1.02%	7.86%	87.05%	12.95%
Health & Social Care Professionals	4.52%	0.39%	4.91%	1.08%	5.99%	81.97%	18.03%
Management & Administrative	5.64%	0.48%	6.12%	0.89%	7.02%	87.29%	12.71%
General Support	7.06%	0.35%	7.40%	0.96%	8.36%	88.52%	11.48%
Patient & Client Care	7.37%	0.68%	8.05%	1.42%	9.47%	85.03%	14.97%

Health Service Absence Rate - by Hospital Group: Jul 2024	Certified absence	Self-certified absence	Non Covid-19 absence	Covid-19 Absence	Total absence rate	% Non Covid-19 absence	% Covid-19 absence
PC	5.64%	0.42%	6.06%	1.01%	7.07%	85.70%	14.30%
CHO 1	5.42%	0.33%	5.76%	0.92%	6.68%	86.25%	13.75%
CHO 2	5.05%	0.42%	5.47%	0.81%	6.28%	87.07%	12.93%
CHO 3	5.94%	0.38%	6.33%	1.05%	7.37%	85.79%	14.21%
CHO 4	5.42%	0.38%	5.80%	0.97%	6.77%	85.69%	14.31%
CHO 5	6.68%	0.34%	7.02%	1.29%	8.31%	84.52%	15.48%
CHO 6	5.67%	0.54%	6.21%	0.93%	7.14%	86.97%	13.03%
CHO 7	6.37%	0.61%	6.98%	1.27%	8.26%	84.57%	15.43%
CHO 8	5.48%	0.32%	5.80%	0.84%	6.64%	87.30%	12.70%
CHO 9	5.09%	0.42%	5.51%	1.00%	6.51%	84.65%	15.35%
Other Community Services	4.49%	0.34%	4.83%	1.27%	6.10%	79.13%	20.87%

Total Absence Rate



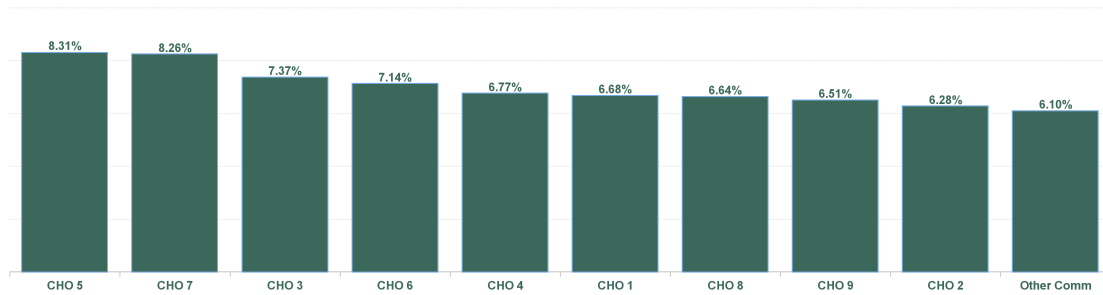
% of Absence Non Covid-19 / Covid-19



July 2024

Health Service Absence Rate - by HG, CHO/Care Group & Staff Category : Jul 2024	Certified absence	Self-certified absence	Non Covid-19 absence	Covid-19 Absence	Total absence rate	Medical & Dental	Nursing & Midwifery	Health & Social Care Professionals	Management & Administrative	General Support	Patient & Client Care
PC	5.64%	0.42%	6.06%	1.01%	7.07%	4.16%	7.86%	5.99%	7.02%	8.36%	9.47%
CHO 1	5.42%	0.33%	5.76%	0.92%	6.68%	2.44%	7.20%	6.46%	6.76%	7.67%	8.08%
CHO 2	5.05%	0.42%	5.47%	0.81%	6.28%	4.16%	5.63%	6.12%	8.81%	3.66%	6.19%
CHO 3	5.94%	0.38%	6.33%	1.05%	7.37%	4.43%	9.82%	5.64%	6.36%	3.96%	9.94%
CHO 4	5.42%	0.38%	5.80%	0.97%	6.77%	3.81%	7.92%	7.27%	4.16%	20.38%	8.18%
CHO 5	6.68%	0.34%	7.02%	1.29%	8.31%	3.73%	8.54%	7.93%	10.95%	6.09%	7.34%
CHO 6	5.67%	0.54%	6.21%	0.93%	7.14%	3.77%	9.02%	5.35%	9.09%	6.23%	7.06%
CHO 7	6.37%	0.61%	6.98%	1.27%	8.26%	4.85%	8.31%	4.89%	7.32%	9.40%	14.48%
CHO 8	5.48%	0.32%	5.80%	0.84%	6.64%	3.46%	7.70%	5.63%	6.05%	13.37%	10.19%
CHO 9	5.09%	0.42%	5.51%	1.00%	6.51%	6.22%	7.20%	4.64%	7.65%	8.55%	6.57%
Other Community Services	4.49%	0.34%	4.83%	1.27%	6.10%	5.89%	20.85%	4.69%	1.90%	8.55%	13.40%

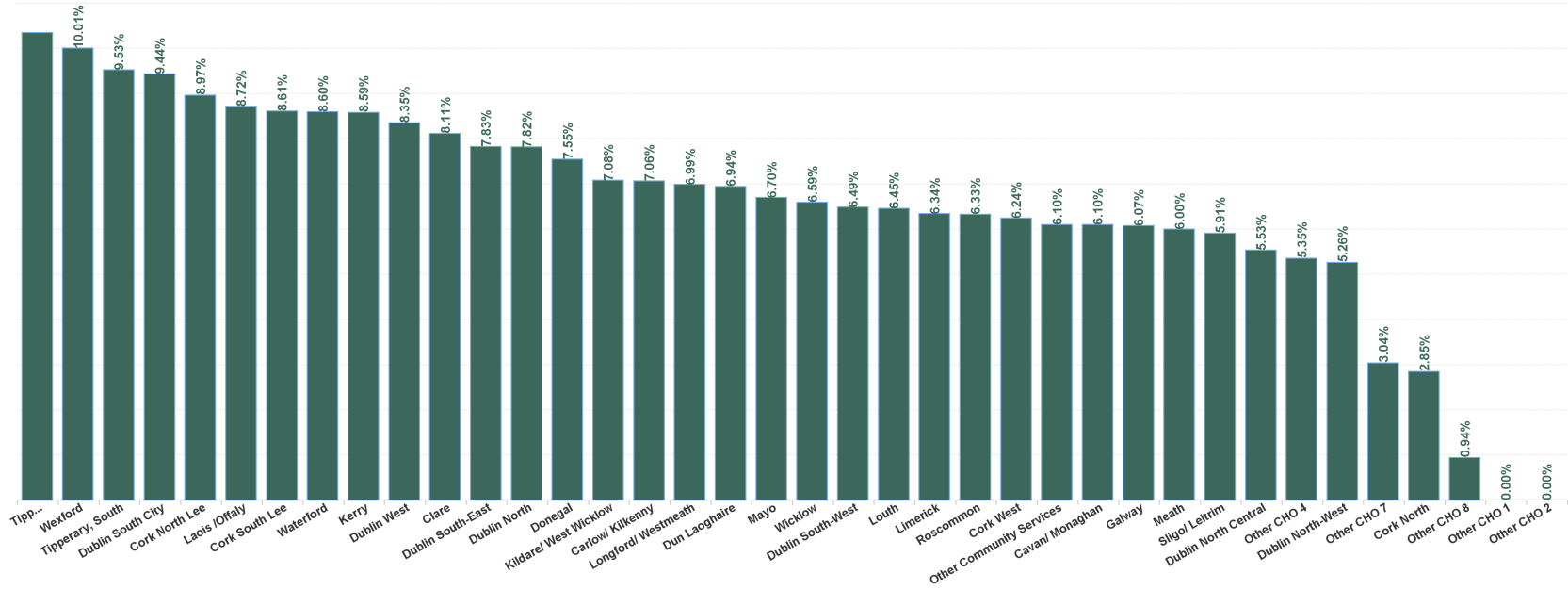
Total Absence Rate



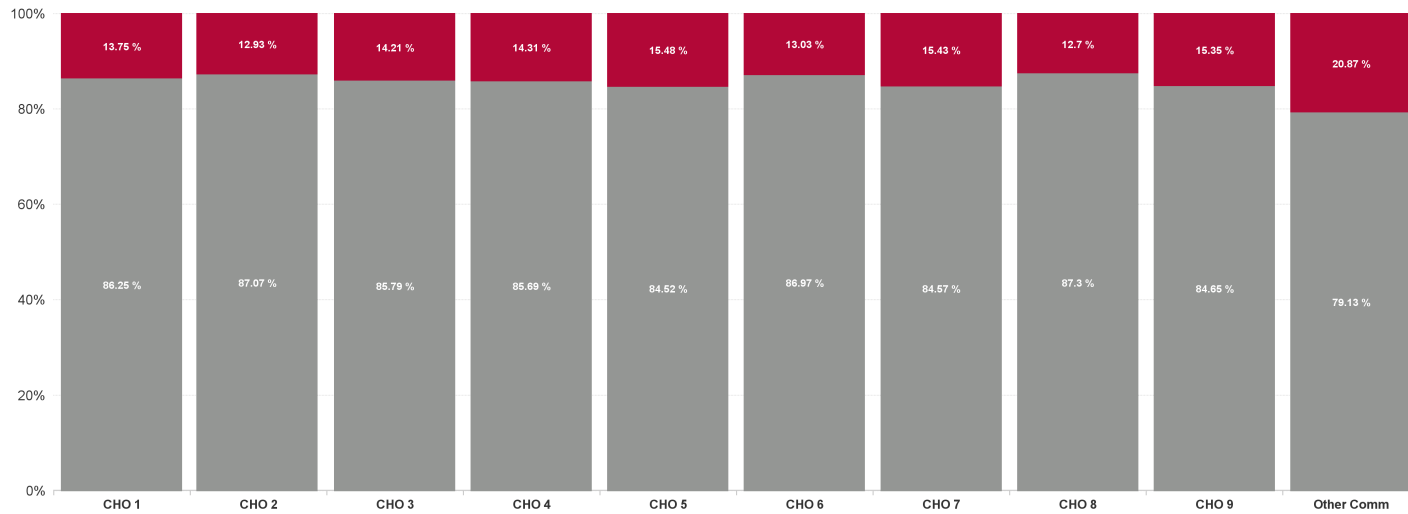
July 2024

Health Service Absence Rate - by HG, CHO/Care Group & Staff Category: Jul 2024	Certified absence	Self-certified absence	Non Covid-19 absence	Covid-19 Absence	Total absence rate	Medical & Dental	Nursing & Midwifery	Health & Social Care Professionals	Management & Administrative	General Support	Patient & Client Care
Total	5.64%	0.42%	6.06%	1.01%	7.07%	4.16%	7.86%	5.99%	7.02%	8.36%	9.47%
Cavan/ Monaghan	4.93%	0.44%	5.37%	0.73%	6.10%	10.46%	5.60%	6.33%	5.80%	4.92%	7.94%
Donegal	6.08%	0.25%	6.32%	1.23%	7.55%	2.81%	7.24%	6.48%	8.99%	13.30%	6.55%
Other CHO 1	0.00%	0.00%	0.00%	0.00%	0.00%				0.00%		
Sligo/ Leitrim	4.92%	0.37%	5.28%	0.62%	5.91%	0.00%	8.81%	6.56%	4.74%	0.68%	10.89%
CHO 1	5.42%	0.33%	5.76%	0.92%	6.68%	2.44%	7.20%	6.46%	6.76%	7.67%	8.08%
Galway	5.02%	0.42%	5.44%	0.64%	6.07%	3.90%	4.07%	6.36%	10.55%	1.58%	7.30%
Mayo	5.19%	0.37%	5.56%	1.14%	6.70%	5.37%	8.47%	6.79%	5.49%	8.80%	4.25%
Other CHO 2	0.00%	0.00%	0.00%	0.00%	0.00%				0.00%		
Roscommon	4.90%	0.54%	5.44%	0.89%	6.33%	1.37%	7.51%	3.03%	9.36%	4.81%	4.89%
CHO 2	5.05%	0.42%	5.47%	0.81%	6.28%	4.16%	5.63%	6.12%	8.81%	3.66%	6.19%
Clare	6.88%	0.40%	7.28%	0.83%	8.11%	11.94%	8.08%	6.87%	8.89%	0.00%	9.80%
Limerick	5.27%	0.25%	5.51%	0.83%	6.34%	3.49%	8.98%	5.50%	3.65%	4.66%	8.88%
Tipperary, North/ Limerick, East	7.49%	0.85%	8.34%	2.01%	10.35%	1.71%	14.24%	5.16%	12.28%	1.57%	13.03%
CHO 3	5.94%	0.38%	6.33%	1.05%	7.37%	4.43%	9.82%	5.64%	6.36%	3.96%	9.94%
Cork North	2.38%	0.13%	2.51%	0.34%	2.85%	0.66%	4.56%	1.92%	3.44%	3.18%	4.48%
Cork North Lee	7.99%	0.33%	8.32%	0.65%	8.97%	6.88%	9.98%	10.52%	2.47%		13.81%
Cork South Lee	6.55%	0.52%	7.08%	1.53%	8.61%	8.00%	7.76%	6.14%	4.60%	31.36%	12.17%
Cork West	5.06%	0.18%	5.24%	1.00%	6.24%	1.36%	8.01%	7.60%	5.22%	0.00%	0.33%
Kerry	7.66%	0.43%	8.09%	0.50%	8.59%	11.32%	8.92%	9.79%	6.19%	0.00%	9.72%
Other CHO 4	3.76%	0.44%	4.20%	1.15%	5.35%	1.43%	1.27%	7.22%	3.31%	0.00%	0.58%
CHO 4	5.42%	0.38%	5.80%	0.97%	6.77%	3.81%	7.92%	7.27%	4.16%	20.38%	8.18%
Carlow/ Kilkenny	5.56%	0.34%	5.90%	1.16%	7.06%	1.14%	7.38%	6.79%	10.52%	0.00%	7.97%
Tipperary, South	7.50%	0.23%	7.73%	1.80%	9.53%	7.20%	9.08%	9.53%	9.52%	12.81%	13.33%
Waterford	7.27%	0.40%	7.67%	0.93%	8.60%	1.71%	10.02%	7.96%	12.82%	0.00%	4.65%
Wexford	7.89%	0.34%	8.24%	1.77%	10.01%	15.63%	7.83%	12.72%	10.27%	8.88%	9.44%
CHO 5	6.68%	0.34%	7.02%	1.29%	8.31%	3.73%	8.54%	7.93%	10.95%	6.09%	7.34%
Dublin South-East	6.68%	0.40%	7.08%	0.75%	7.83%	4.10%	12.14%	5.16%	10.00%	0.00%	11.81%
Dun Laoghaire	5.39%	0.49%	5.88%	1.07%	6.94%	3.94%	7.80%	4.42%	12.91%	2.90%	4.97%
Wicklow	4.86%	0.69%	5.55%	1.04%	6.59%	3.11%	7.73%	6.45%	6.48%	7.97%	6.85%
CHO 6	5.67%	0.54%	6.21%	0.93%	7.14%	3.77%	9.02%	5.35%	9.09%	6.23%	7.06%
Dublin South City	7.01%	0.88%	7.89%	1.55%	9.44%	6.18%	9.98%	3.96%	7.74%	9.36%	14.05%
Dublin South-West	4.98%	0.59%	5.57%	0.92%	6.49%	2.15%	5.06%	3.23%	10.19%	0.99%	12.11%
Dublin West	6.81%	0.34%	7.15%	1.20%	8.35%	3.91%	8.71%	8.44%	5.24%	10.44%	15.16%
Kildare/ West Wicklow	5.60%	0.47%	6.07%	1.01%	7.08%	8.05%	6.51%	3.56%	7.34%	16.14%	16.24%
Other CHO 7	0.00%	0.00%	0.00%	3.04%	3.04%		0.00%	6.87%	0.00%		
CHO 7	6.37%	0.61%	6.98%	1.27%	8.26%	4.85%	8.31%	4.89%	7.32%	9.40%	14.48%
Laois /Offaly	7.18%	0.30%	7.48%	1.23%	8.72%	15.52%	8.23%	7.99%	7.94%	16.27%	9.15%
Longford/ Westmeath	5.90%	0.35%	6.25%	0.74%	6.99%	3.49%	8.91%	4.68%	5.30%	17.08%	13.44%
Louth	5.45%	0.34%	5.79%	0.66%	6.45%	11.06%	5.47%	6.12%	7.17%	0.00%	8.37%
Meath	4.73%	0.35%	5.08%	0.92%	6.00%	0.29%	8.01%	3.67%	7.55%	15.19%	9.03%
Other CHO 8	0.65%	0.07%	0.72%	0.22%	0.94%	17.30%	0.00%		0.07%	21.87%	
CHO 8	5.48%	0.32%	5.80%	0.84%	6.64%	3.46%	7.70%	5.63%	6.05%	13.37%	10.19%
Dublin North	6.12%	0.50%	6.61%	1.21%	7.82%	5.49%	8.91%	5.92%	9.42%	7.99%	8.24%
Dublin North Central	4.52%	0.33%	4.86%	0.68%	5.53%	7.51%	6.62%	4.32%	4.83%	18.18%	5.29%
Dublin North-West	3.86%	0.40%	4.26%	1.00%	5.26%	10.28%	4.50%	3.65%	8.08%	4.63%	5.69%
CHO 9	5.09%	0.42%	5.51%	1.00%	6.51%	6.22%	7.20%	4.64%	7.65%	8.55%	6.57%
Other Community Services	4.49%	0.34%	4.83%	1.27%	6.10%	5.89%	20.85%	4.69%	1.90%	8.55%	13.40%
Other Community Services	4.49%	0.34%	4.83%	1.27%	6.10%	5.89%	20.85%	4.69%	1.90%	8.55%	13.40%
Community Services	5.64%	0.42%	6.06%	1.01%	7.07%	4.16%	7.86%	5.99%	7.02%	8.36%	9.47%

Total Absence Rate



% of Absence Non Covid-19 / Covid-19



July 2024

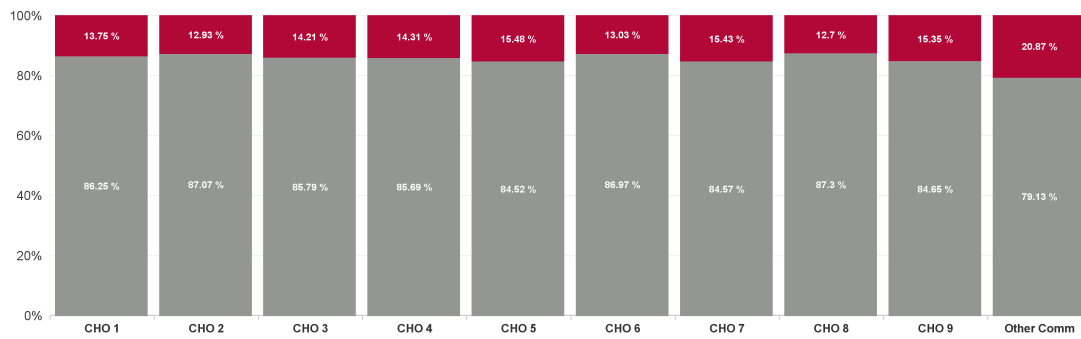
Health Service Covid 19 Absence Rate - by Hospital & Staff Category: Jul 2024	Non Covid-19 absence	Covid-19 absence	Total absence rate	Medical & Dental	Nursing & Midwifery	Health & Social Care Professionals	Management & Administrative	General Support	Patient & Client Care
PC	6.06%	1.01%	7.07%	0.68%	1.02%	1.08%	0.89%	0.96%	1.42%
Cavan/ Monaghan	5.37%	0.73%	6.10%	2.01%	0.73%	0.91%	0.55%	0.00%	0.92%
Donegal	6.32%	1.23%	7.55%	0.31%	0.86%	1.58%	1.80%	0.11%	1.47%
Other CHO 1	0.00%	0.00%	0.00%				0.00%		
Sligo/ Leitrim	5.28%	0.62%	5.91%	0.00%	0.32%	0.70%	0.81%	0.00%	2.10%
CHO 1	5.76%	0.92%	6.68%	0.37%	0.68%	1.15%	1.14%	0.05%	1.52%
Galway	5.44%	0.64%	6.07%	0.13%	0.45%	0.57%	1.07%	1.14%	0.68%
Mayo	5.56%	1.14%	6.70%	0.61%	1.64%	1.17%	1.07%	0.62%	0.46%
Other CHO 2	0.00%	0.00%	0.00%				0.00%		
Roscommon	5.44%	0.89%	6.33%	0.69%	1.49%	0.25%	0.56%	4.81%	0.00%
CHO 2	5.47%	0.81%	6.28%	0.30%	0.88%	0.73%	0.99%	1.30%	0.56%
Clare	7.28%	0.83%	8.11%	0.00%	0.80%	1.16%	1.07%	0.00%	0.00%
Limerick	5.51%	0.83%	6.34%	0.43%	0.51%	2.21%	0.34%	0.00%	0.42%
Tipperary, North/ Limerick, East	8.34%	2.01%	10.35%	0.00%	2.52%	1.12%	3.35%	0.00%	1.52%
CHO 3	6.33%	1.05%	7.37%	0.29%	0.95%	1.86%	1.05%	0.00%	0.63%
Cork North	2.51%	0.34%	2.85%	0.14%	0.24%	1.50%	0.58%	0.00%	0.27%
Cork North Lee	8.32%	0.65%	8.97%	1.41%	0.58%	0.69%	0.82%		0.00%
Cork South Lee	7.08%	1.53%	8.61%	0.21%	1.67%	1.11%	0.65%	6.28%	2.09%
Cork West	5.24%	1.00%	6.24%	0.00%	2.15%	1.16%	0.19%	0.00%	0.00%
Kerry	8.09%	0.50%	8.59%	0.00%	0.45%	1.37%	0.26%	0.00%	0.65%
Other CHO 4	4.20%	1.15%	5.35%	0.00%	0.89%	1.68%	0.45%	0.00%	0.00%
CHO 4	5.80%	0.97%	6.77%	0.21%	1.03%	1.43%	0.50%	3.89%	0.93%
Carlow/ Kilkenny	5.90%	1.16%	7.06%	0.28%	0.82%	1.36%	1.26%	0.00%	3.65%
Tipperary, South	7.73%	1.80%	9.53%	0.00%	1.26%	0.71%	1.14%	0.00%	12.06%
Waterford	7.67%	0.93%	8.60%	0.87%	0.96%	0.39%	1.28%	0.00%	1.21%
Wexford	8.24%	1.77%	10.01%	8.56%	1.26%	1.15%	1.40%	0.00%	2.04%
CHO 5	7.02%	1.29%	8.31%	1.43%	1.03%	1.08%	1.27%	0.00%	3.34%
Dublin South-East	7.08%	0.75%	7.83%	0.64%	0.68%	0.86%	0.86%	0.00%	0.00%
Dun Laoghaire	5.88%	1.07%	6.94%	2.34%	1.06%	0.17%	2.59%	0.00%	1.02%
Wicklow	5.55%	1.04%	6.59%	0.83%	1.36%	1.78%	0.60%	0.00%	0.83%
CHO 6	6.21%	0.93%	7.14%	0.83%	1.09%	0.95%	0.99%	0.00%	0.77%
Dublin South City	7.89%	1.55%	9.44%	0.15%	1.62%	1.60%	0.00%	1.73%	2.57%
Dublin South-West	5.57%	0.92%	6.49%	2.15%	1.07%	0.66%	0.96%	0.00%	0.86%
Dublin West	7.15%	1.20%	8.35%	0.87%	0.54%	2.59%	0.25%	0.00%	1.74%
Kildare/ West Wicklow	6.07%	1.01%	7.08%	1.78%	1.59%	0.58%	0.51%	0.00%	1.31%
Other CHO 7	0.00%	3.04%	3.04%		0.00%	6.87%	0.00%		
CHO 7	6.98%	1.27%	8.26%	0.87%	1.38%	1.45%	0.37%	1.33%	2.00%
Laois /Offaly	7.48%	1.23%	8.72%	0.00%	1.54%	0.50%	1.12%	2.85%	2.44%
Longford/ Westmeath	6.25%	0.74%	6.99%	0.00%	0.79%	1.24%	0.62%	0.00%	0.42%
Louth	5.79%	0.66%	6.45%	0.00%	0.42%	0.76%	0.66%	0.00%	1.88%
Meath	5.08%	0.92%	6.00%	0.00%	1.42%	1.30%	1.09%	0.00%	0.25%

Other CHO 8	0.72%	0.22%	0.94%	0.00%	0.00%		0.00%	8.11%	
CHO 8	5.80%	0.84%	6.64%	0.00%	1.03%	0.94%	0.74%	1.57%	1.07%
Dublin North	6.61%	1.21%	7.82%	1.67%	1.02%	0.48%	1.84%	0.00%	1.50%
Dublin North Central	4.86%	0.68%	5.53%	0.00%	0.49%	0.73%	0.93%	0.00%	0.76%
Dublin North-West	4.26%	1.00%	5.26%	1.28%	1.78%	0.00%	0.88%	0.39%	2.09%
CHO 9	5.51%	1.00%	6.51%	1.46%	1.05%	0.42%	1.34%	0.12%	1.44%
Other Community Services	4.83%	1.27%	6.10%	4.50%	0.00%	0.00%	0.42%	3.89%	3.05%
Other Community Services	4.83%	1.27%	6.10%	4.50%	0.00%	0.00%	0.42%	3.89%	3.05%
Community Services	6.06%	1.01%	7.07%	0.68%	1.02%	1.08%	0.89%	0.96%	1.42%

July 2024

Health Service Absence Rate - by HG, CHO/Care Group & Staff Category: Jul 2024	Certified absence	Self-certified absence	Non Covid-19 absence	Covid-19 Absence	Total absence rate	Medical & Dental	Nursing & Midwifery	Health & Social Care Professionals	Management & Administrative	General Support	Patient & Client Care
Total	5.64%	0.42%	6.06%	1.01%	7.07%	4.16%	7.86%	5.99%	7.02%	8.36%	9.47%
Health Service Executive	5.42%	0.33%	5.76%	0.92%	6.68%	2.44%	7.20%	6.46%	6.76%	7.67%	8.08%
CHO 1	5.42%	0.33%	5.76%	0.92%	6.68%	2.44%	7.20%	6.46%	6.76%	7.67%	8.08%
Health Service Executive	5.23%	0.39%	5.62%	0.92%	6.54%	4.35%	5.98%	6.20%	8.79%	4.42%	7.01%
Section 38 Voluntary Agencies	3.76%	0.63%	4.40%	0.00%	4.40%	1.41%	3.87%	4.88%	9.09%	0.29%	3.74%
CHO 2	5.05%	0.42%	5.47%	0.81%	6.28%	4.16%	5.63%	6.12%	8.81%	3.66%	6.19%
Health Service Executive	6.38%	0.53%	6.91%	1.44%	8.35%	4.43%	11.36%	6.53%	7.85%	0.60%	10.47%
Section 38 Voluntary Agencies	4.77%	0.00%	4.77%	0.00%	4.77%		6.42%	1.68%	1.70%	5.27%	8.62%
CHO 3	5.94%	0.38%	6.33%	1.05%	7.37%	4.43%	9.82%	5.64%	6.36%	3.96%	9.94%
Health Service Executive	5.40%	0.35%	5.75%	0.85%	6.60%	4.97%	7.69%	7.62%	4.77%	0.00%	7.22%
Section 38 Voluntary Agencies	5.50%	0.51%	6.00%	1.45%	7.45%	0.11%	8.88%	2.06%	0.94%	22.54%	9.59%
CHO 4	5.42%	0.38%	5.80%	0.97%	6.77%	3.81%	7.92%	7.27%	4.16%	20.38%	8.18%
Health Service Executive	6.68%	0.34%	7.02%	1.29%	8.31%	3.73%	8.54%	7.93%	10.95%	6.09%	7.34%
CHO 5	6.68%	0.34%	7.02%	1.29%	8.31%	3.73%	8.54%	7.93%	10.95%	6.09%	7.34%
Health Service Executive	5.88%	0.43%	6.31%	1.07%	7.38%	4.29%	8.88%	4.89%	9.76%	7.72%	9.08%
Section 38 Voluntary Agencies	4.49%	1.16%	5.65%	0.17%	5.81%	0.81%	9.73%	20.87%	4.85%	4.97%	3.12%
CHO 6	5.67%	0.54%	6.21%	0.93%	7.14%	3.77%	9.02%	5.35%	9.09%	6.23%	7.06%
Health Service Executive	5.89%	0.47%	6.37%	1.06%	7.42%	4.68%	7.17%	5.15%	6.91%	6.69%	15.10%
Section 38 Voluntary Agencies	7.44%	0.93%	8.37%	1.76%	10.13%	5.83%	10.15%	3.45%	9.24%	10.70%	13.69%
CHO 7	6.37%	0.61%	6.98%	1.27%	8.26%	4.85%	8.31%	4.89%	7.32%	9.40%	14.48%
Health Service Executive	5.48%	0.32%	5.80%	0.84%	6.64%	3.46%	7.70%	5.63%	6.05%	13.37%	10.19%
CHO 8	5.48%	0.32%	5.80%	0.84%	6.64%	3.46%	7.70%	5.63%	6.05%	13.37%	10.19%
Health Service Executive	5.04%	0.45%	5.49%	1.01%	6.50%	6.56%	6.84%	4.78%	8.11%	8.06%	6.54%
Section 38 Voluntary Agencies	5.39%	0.27%	5.67%	0.94%	6.60%	0.00%	8.73%	1.94%	4.01%	9.50%	6.75%
CHO 9	5.09%	0.42%	5.51%	1.00%	6.51%	6.22%	7.20%	4.64%	7.65%	8.55%	6.57%
Health Service Executive	4.49%	0.34%	4.83%	1.27%	6.10%	5.89%	20.85%	4.69%	1.90%	8.55%	13.40%

% of Absence Non Covid-19 / Covid-19

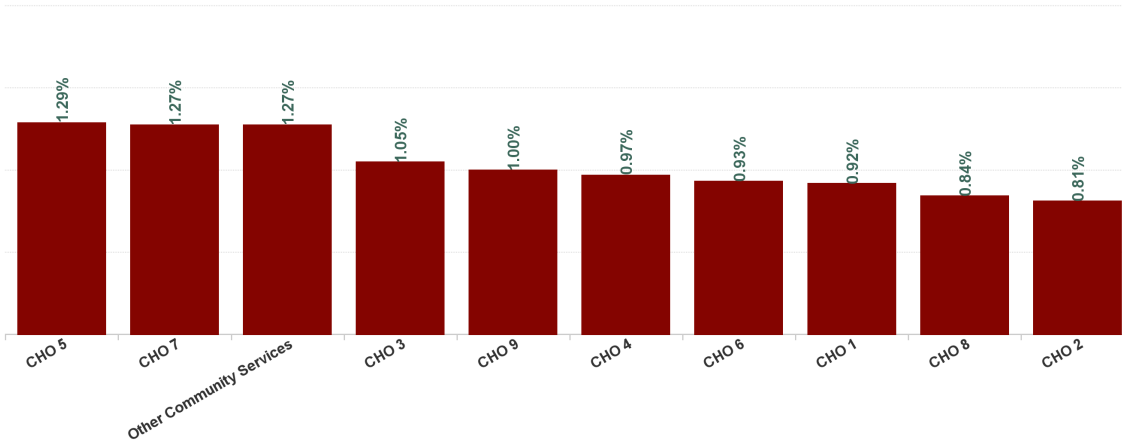


8.55%
13.40%
8.36%
9.47%

July 2024

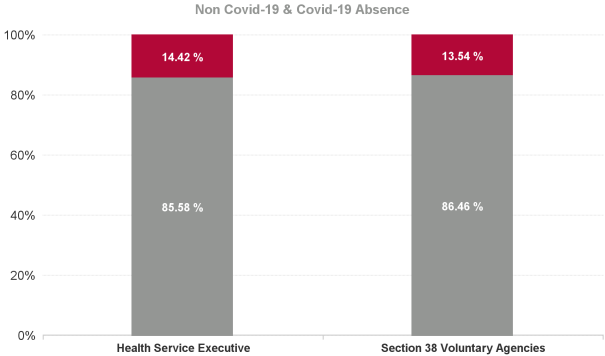
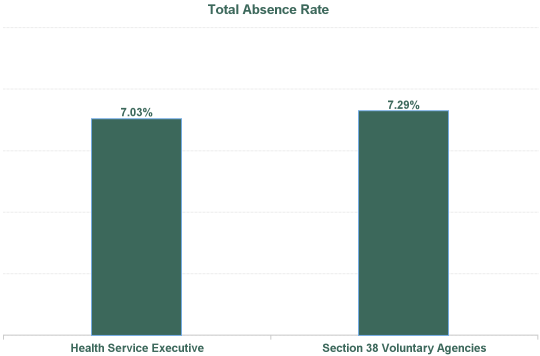
Health Service Covid 19 Absence Rate - by Hospital & Staff Category: Jul 2024	Non Covid-19 absence	Covid-19 Absence	Total absence rate	Medical & Dental	Nursing & Midwifery	Health & Social Care Professionals	Management & Administrative	General Support	Patient & Client Care
PC	6.06%	1.01%	7.07%	0.68%	1.02%	1.08%	0.89%	0.96%	1.42%
Health Service Executive	5.76%	0.92%	6.68%	0.37%	0.68%	1.15%	1.14%	0.05%	1.52%
CHO 1	5.76%	0.92%	6.68%	0.37%	0.68%	1.15%	1.14%	0.05%	1.52%
Health Service Executive	5.62%	0.92%	6.54%	0.32%	1.07%	0.77%	1.09%	1.59%	0.75%
Section 38 Voluntary Agencies	4.40%	0.00%	4.40%	0.00%	0.00%	0.00%	0.00%	0.00%	0.00%
CHO 2	5.47%	0.81%	6.28%	0.30%	0.88%	0.73%	0.99%	1.30%	0.56%
Health Service Executive	6.91%	1.44%	8.35%	0.29%	1.38%	2.28%	1.38%	0.00%	0.87%
Section 38 Voluntary Agencies	4.77%	0.00%	4.77%		0.00%	0.00%	0.00%	0.00%	0.00%
CHO 3	6.33%	1.05%	7.37%	0.29%	0.95%	1.86%	1.05%	0.00%	0.63%
Health Service Executive	5.75%	0.85%	6.60%	0.28%	0.79%	1.46%	0.59%	0.00%	0.63%
Section 38 Voluntary Agencies	6.00%	1.45%	7.45%	0.00%	2.08%	0.97%	0.00%	4.30%	1.37%
CHO 4	5.80%	0.97%	6.77%	0.21%	1.03%	1.43%	0.50%	3.89%	0.93%
Health Service Executive	7.02%	1.29%	8.31%	1.43%	1.03%	1.08%	1.27%	0.00%	3.34%
CHO 5	7.02%	1.29%	8.31%	1.43%	1.03%	1.08%	1.27%	0.00%	3.34%
Health Service Executive	6.31%	1.07%	7.38%	0.96%	1.18%	0.98%	1.14%	0.00%	1.17%
Section 38 Voluntary Agencies	5.65%	0.17%	5.81%	0.00%	0.67%	0.00%	0.00%	0.00%	0.00%
CHO 6	6.21%	0.93%	7.14%	0.83%	1.09%	0.95%	0.99%	0.00%	0.77%
Health Service Executive	6.37%	1.06%	7.42%	0.98%	1.19%	1.41%	0.45%	0.00%	1.38%
Section 38 Voluntary Agencies	8.37%	1.76%	10.13%	0.23%	1.70%	1.63%	0.00%	1.97%	2.80%
CHO 7	6.98%	1.27%	8.26%	0.87%	1.38%	1.45%	0.37%	1.33%	2.00%
Health Service Executive	5.80%	0.84%	6.64%	0.00%	1.03%	0.94%	0.74%	1.57%	1.07%
CHO 8	5.80%	0.84%	6.64%	0.00%	1.03%	0.94%	0.74%	1.57%	1.07%
Health Service Executive	5.49%	1.01%	6.50%	1.54%	0.88%	0.44%	1.51%	0.18%	1.53%
Section 38 Voluntary Agencies	5.67%	0.94%	6.60%	0.00%	1.78%	0.00%	0.00%	0.00%	0.99%
CHO 9	5.51%	1.00%	6.51%	1.46%	1.05%	0.42%	1.34%	0.12%	1.44%
Health Service Executive	4.83%	1.27%	6.10%	4.50%	0.00%	0.00%	0.42%	3.89%	3.05%
Other Community Services	4.83%	1.27%	6.10%	4.50%	0.00%	0.00%	0.42%	3.89%	3.05%
Community Services	6.06%	1.01%	7.07%	0.68%	1.02%	1.08%	0.89%	0.96%	1.42%

Covid 19 Absence Rate



July 2024

Health Service Absence Rate - by Admin : Jul 2024	Certified absence	Self-certified absence	Non Covid-19 absence	Covid-19 Absence	Total absence rate	Medical & Dental	Nursing & Midwifery	Health & Social Care Professionals	Management & Administrative	General Support	Patient & Client Care
Total	5.64%	0.42%	6.06%	1.01%	7.07%	4.16%	7.86%	5.99%	7.02%	8.36%	9.47%
Health Service Executive	5.63%	0.39%	6.02%	1.01%	7.03%	4.40%	7.78%	6.15%	7.30%	6.80%	9.39%
Section 38 Voluntary Agencies	5.72%	0.59%	6.31%	0.99%	7.29%	1.65%	8.29%	3.36%	4.28%	10.64%	9.70%



Health Service Absence Rate - by Staff Category: Jul 2024	Certified absence	Self-certified absence	Non Covid-19 absence	Covid-19 Absence	Total absence rate	% Non Covid-19 absence	% Covid-19 absence
CHO 1	5.42%	0.33%	5.76%	0.92%	6.68%	86.25%	13.75%
Medical & Dental	2.02%	0.05%	2.07%	0.37%	2.44%	84.91%	15.09%
Nursing & Midwifery	6.28%	0.23%	6.51%	0.68%	7.20%	90.50%	9.50%
Health & Social Care Professionals	4.75%	0.55%	5.30%	1.15%	6.46%	82.13%	17.87%
Management & Administrative	5.38%	0.24%	5.62%	1.14%	6.76%	83.12%	16.88%
General Support	7.27%	0.35%	7.62%	0.05%	7.67%	99.33%	0.67%
Patient & Client Care	5.91%	0.65%	6.56%	1.52%	8.08%	81.19%	18.81%

Health Service Absence Rate - by Staff Category: Jul 2024	Certified absence	Self-certified absence	Non Covid-19 absence	Covid-19 Absence	Total absence rate	% Non Covid-19 absence	% Covid-19 absence
CHO 2	5.05%	0.42%	5.47%	0.81%	6.28%	87.07%	12.93%
Medical & Dental	3.42%	0.45%	3.86%	0.30%	4.16%	92.87%	7.13%
Nursing & Midwifery	4.37%	0.37%	4.74%	0.88%	5.63%	84.27%	15.73%
Health & Social Care Professionals	4.94%	0.46%	5.40%	0.73%	6.12%	88.15%	11.85%
Management & Administrative	7.47%	0.35%	7.82%	0.99%	8.81%	88.71%	11.29%
General Support	2.24%	0.12%	2.37%	1.30%	3.66%	64.58%	35.42%
Patient & Client Care	4.84%	0.79%	5.63%	0.56%	6.19%	90.89%	9.11%

Health Service Absence Rate - by Staff Category: Jul 2024	Certified absence	Self-certified absence	Non Covid-19 absence	Covid-19 Absence	Total absence rate	% Non Covid-19 absence	% Covid-19 absence
CHO 3	5.94%	0.38%	6.33%	1.05%	7.37%	85.79%	14.21%
Medical & Dental	3.98%	0.16%	4.14%	0.29%	4.43%	93.39%	6.61%
Nursing & Midwifery	8.64%	0.23%	8.87%	0.95%	9.82%	90.34%	9.66%
Health & Social Care Professionals	3.28%	0.50%	3.78%	1.86%	5.64%	67.06%	32.94%
Management & Administrative	4.57%	0.74%	5.31%	1.05%	6.36%	83.50%	16.50%
General Support	3.96%	0.00%	3.96%	0.00%	3.96%	100.00%	0.00%
Patient & Client Care	9.10%	0.21%	9.32%	0.63%	9.94%	93.71%	6.29%

Health Service Absence Rate - by Staff Category: Jul 2024	Certified absence	Self-certified absence	Non Covid-19 absence	Covid-19 Absence	Total absence rate	% Non Covid-19 absence	% Covid-19 absence
CHO 4	5.42%	0.38%	5.80%	0.97%	6.77%	85.69%	14.31%
Medical & Dental	3.31%	0.29%	3.60%	0.21%	3.81%	94.43%	5.57%
Nursing & Midwifery	6.59%	0.29%	6.88%	1.03%	7.92%	86.94%	13.06%
Health & Social Care Professionals	5.48%	0.36%	5.84%	1.43%	7.27%	80.37%	19.63%
Management & Administrative	3.31%	0.35%	3.66%	0.50%	4.16%	88.05%	11.95%
General Support	15.52%	0.98%	16.49%	3.89%	20.38%	80.93%	19.07%
Patient & Client Care	6.53%	0.72%	7.25%	0.93%	8.18%	88.66%	11.34%

Health Service Absence Rate - by Staff Category: Jul 2024	Certified absence	Self-certified absence	Non Covid-19 absence	Covid-19 Absence	Total absence rate	% Non Covid-19 absence	% Covid-19 absence
CHO 5	6.68%	0.34%	7.02%	1.29%	8.31%	84.52%	15.48%
Medical & Dental	2.21%	0.09%	2.31%	1.43%	3.73%	61.78%	38.22%
Nursing & Midwifery	7.31%	0.21%	7.51%	1.03%	8.54%	87.98%	12.02%
Health & Social Care Professionals	6.51%	0.34%	6.85%	1.08%	7.93%	86.37%	13.63%
Management & Administrative	9.26%	0.42%	9.68%	1.27%	10.95%	88.42%	11.58%
General Support	5.15%	0.94%	6.09%	0.00%	6.09%	100.00%	0.00%
Patient & Client Care	3.16%	0.84%	4.00%	3.34%	7.34%	54.54%	45.46%

Health Service Absence Rate - by Staff Category: Jul 2024	Certified absence	Self-certified absence	Non Covid-19 absence	Covid-19 Absence	Total absence rate	% Non Covid-19 absence	% Covid-19 absence
CHO 6	5.67%	0.54%	6.21%	0.93%	7.14%	86.97%	13.03%
Medical & Dental	2.57%	0.38%	2.94%	0.83%	3.77%	78.11%	21.89%
Nursing & Midwifery	7.24%	0.68%	7.92%	1.09%	9.02%	87.88%	12.12%
Health & Social Care Professionals	4.22%	0.18%	4.40%	0.95%	5.35%	82.18%	17.82%
Management & Administrative	7.23%	0.88%	8.10%	0.99%	9.09%	89.15%	10.85%
General Support	5.15%	1.08%	6.23%	0.00%	6.23%	100.00%	0.00%
Patient & Client Care	5.99%	0.30%	6.29%	0.77%	7.06%	89.03%	10.97%

Health Service Absence Rate - by Staff Category: Jul 2024	Certified absence	Self-certified absence	Non Covid-19 absence	Covid-19 Absence	Total absence rate	% Non Covid-19 absence	% Covid-19 absence
CHO 7	6.37%	0.61%	6.98%	1.27%	8.26%	84.57%	15.43%
Medical & Dental	3.91%	0.07%	3.98%	0.87%	4.85%	82.10%	17.90%
Nursing & Midwifery	6.12%	0.81%	6.93%	1.38%	8.31%	83.35%	16.65%
Health & Social Care Professionals	2.91%	0.54%	3.45%	1.45%	4.89%	70.45%	29.55%
Management & Administrative	6.53%	0.43%	6.95%	0.37%	7.32%	94.95%	5.05%
General Support	7.78%	0.29%	8.07%	1.33%	9.40%	85.80%	14.20%
Patient & Client Care	11.51%	0.98%	12.49%	2.00%	14.48%	86.22%	13.78%

Health Service Absence Rate - by Staff Category: Jul 2024	Certified absence	Self-certified absence	Non Covid-19 absence	Covid-19 Absence	Total absence rate	% Non Covid-19 absence	% Covid-19 absence
CHO 8	5.48%	0.32%	5.80%	0.84%	6.64%	87.30%	12.70%
Medical & Dental	3.42%	0.04%	3.46%	0.00%	3.46%	100.00%	0.00%
Nursing & Midwifery	6.52%	0.16%	6.67%	1.03%	7.70%	86.68%	13.32%
Health & Social Care Professionals	4.32%	0.37%	4.69%	0.94%	5.63%	83.30%	16.70%
Management & Administrative	4.76%	0.54%	5.30%	0.74%	6.05%	87.71%	12.29%
General Support	11.69%	0.10%	11.79%	1.57%	13.37%	88.22%	11.78%
Patient & Client Care	8.76%	0.36%	9.12%	1.07%	10.19%	89.50%	10.50%

Health Service Absence Rate - by Staff Category: Jul 2024	Certified absence	Self-certified absence	Non Covid-19 absence	Covid-19 Absence	Total absence rate	% Non Covid-19 absence	% Covid-19 absence
CHO 9	5.09%	0.42%	5.51%	1.00%	6.51%	84.65%	15.35%
Medical & Dental	4.57%	0.19%	4.76%	1.46%	6.22%	76.52%	23.48%
Nursing & Midwifery	5.73%	0.42%	6.15%	1.05%	7.20%	85.40%	14.60%
Health & Social Care Professionals	4.01%	0.21%	4.23%	0.42%	4.64%	91.05%	8.95%
Management & Administrative	5.64%	0.66%	6.31%	1.34%	7.65%	82.46%	17.54%
General Support	8.20%	0.24%	8.43%	0.12%	8.55%	98.63%	1.37%
Patient & Client Care	4.41%	0.73%	5.13%	1.44%	6.57%	78.09%	21.91%

Health Service Absence Rate - by Staff Category: Jul 2024	Certified absence	Self-certified absence	Non Covid-19 absence	Covid-19 Absence	Total absence rate	% Non Covid-19 absence	% Covid-19 absence
Other Comm	4.49%	0.34%	4.83%	1.27%	6.10%	79.13%	20.87%
Medical & Dental	0.69%	0.69%	1.39%	4.50%	5.89%	23.53%	76.47%
Nursing & Midwifery	20.85%	0.00%	20.85%	0.00%	20.85%	100.00%	0.00%
Health & Social Care Professionals	4.69%	0.00%	4.69%	0.00%	4.69%	100.00%	0.00%
Management & Administrative	0.95%	0.53%	1.48%	0.42%	1.90%	77.78%	22.22%
General Support	4.66%	0.00%	4.66%	3.89%	8.55%	54.49%	45.51%
Patient & Client Care	9.81%	0.54%	10.35%	3.05%	13.40%	77.26%	22.74%

Health Service Absence Rate - by Staff Category: Jul 2024	Certified absence	Self-certified absence	Non Covid-19 absence	Covid-19 Absence	Total absence rate	% Non Covid-19 absence	% Covid-19 absence
Cork Dental Hospital	1.43%	0.15%	1.58%	0.00%	1.58%	100.00%	0.00%
Medical & Dental	0.00%	0.19%	0.19%	0.00%	0.19%	100.00%	0.00%
Nursing & Midwifery	3.07%	0.00%	3.07%	0.00%	3.07%	100.00%	0.00%
Health & Social Care Professionals	0.00%	0.00%	0.00%	0.00%	0.00%		
Management & Administrative	0.39%	0.14%	0.52%	0.00%	0.52%	100.00%	0.00%
General Support	3.18%	0.00%	3.18%	0.00%	3.18%	100.00%	0.00%
Patient & Client Care	2.51%	0.24%	2.75%	0.00%	2.75%	100.00%	0.00%

Health Service Absence Rate - by Staff Category: Jul 2024	Certified absence	Self-certified absence	Non Covid-19 absence	Covid-19 Absence	Total absence rate	% Non Covid-19 absence	% Covid-19 absence
Dublin Dental Hospital	2.44%	1.54%	3.98%	0.00%	3.98%	100.00%	0.00%
Medical & Dental	0.00%	0.00%	0.00%	0.00%	0.00%		
Nursing & Midwifery	11.80%	4.35%	16.15%	0.00%	16.15%	100.00%	0.00%
Health & Social Care Professionals	0.00%	0.00%	0.00%	0.00%	0.00%		
Management & Administrative	2.14%	3.25%	5.39%	0.00%	5.39%	100.00%	0.00%
General Support	3.73%	1.24%	4.97%	0.00%	4.97%	100.00%	0.00%
Patient & Client Care	0.81%	0.00%	0.81%	0.00%	0.81%	100.00%	0.00%

Health Service Absence Rate - by Staff Category: Jul 2024	Certified absence	Self-certified absence	Non Covid-19 absence	Covid-19 Absence	Total absence rate	% Non Covid-19 absence	% Covid-19 absence
Galway Hospice Foundation	3.76%	0.63%	4.40%	0.00%	4.40%	100.00%	0.00%
Medical & Dental	1.41%	0.00%	1.41%	0.00%	1.41%	100.00%	0.00%
Nursing & Midwifery	3.81%	0.06%	3.87%	0.00%	3.87%	100.00%	0.00%
Health & Social Care Professionals	4.16%	0.72%	4.88%	0.00%	4.88%	100.00%	0.00%
Management & Administrative	8.67%	0.41%	9.09%	0.00%	9.09%	100.00%	0.00%
General Support	0.00%	0.29%	0.29%	0.00%	0.29%	100.00%	0.00%
Patient & Client Care	1.26%	2.48%	3.74%	0.00%	3.74%	100.00%	0.00%

Health Service Absence Rate - by Staff Category: Jul 2024	Certified absence	Self-certified absence	Non Covid-19 absence	Covid-19 Absence	Total absence rate	% Non Covid-19 absence	% Covid-19 absence
Marymount	7.78%	0.70%	8.48%	2.26%	10.74%	78.98%	21.02%
Medical & Dental	0.00%	0.00%	0.00%	0.00%	0.00%		
Nursing & Midwifery	6.35%	0.69%	7.05%	2.22%	9.27%	76.03%	23.97%
Health & Social Care Professionals	1.04%	0.21%	1.25%	1.10%	2.35%	53.16%	46.84%
Management & Administrative	1.23%	0.13%	1.36%	0.00%	1.36%	100.00%	0.00%
General Support	24.22%	1.63%	25.85%	6.47%	32.32%	79.98%	20.02%
Patient & Client Care	14.83%	1.35%	16.18%	3.37%	19.55%	82.78%	17.22%

Health Service Absence Rate - by Staff Category: Jul 2024	Certified absence	Self- certified absence	Non Covid-19 absence	Covid-19 Absence	Total absence rate	% Non Covid-19 absence	% Covid-19 absence
Milford Care Centre	4.77%	0.00%	4.77%	0.00%	4.77%	100.00%	0.00%
Medical & Dental							
Nursing & Midwifery	6.42%	0.00%	6.42%	0.00%	6.42%	100.00%	0.00%
Health & Social Care Professionals	1.68%	0.00%	1.68%	0.00%	1.68%	100.00%	0.00%
Management & Administrative	1.70%	0.00%	1.70%	0.00%	1.70%	100.00%	0.00%
General Support	5.27%	0.00%	5.27%	0.00%	5.27%	100.00%	0.00%
Patient & Client Care	8.62%	0.00%	8.62%	0.00%	8.62%	100.00%	0.00%

Health Service Absence Rate - by Staff Category: Jul 2024	Certified absence	Self- certified absence	Non Covid-19 absence	Covid-19 Absence	Total absence rate	% Non Covid-19 absence	% Covid-19 absence
Our Lady's Hospice & Care, Dubli	7.44%	0.93%	8.37%	1.76%	10.13%	82.63%	17.37%
Medical & Dental	5.15%	0.46%	5.60%	0.23%	5.83%	96.08%	3.92%
Nursing & Midwifery	7.05%	1.40%	8.45%	1.70%	10.15%	83.29%	16.71%
Health & Social Care Professionals	1.48%	0.34%	1.82%	1.63%	3.45%	52.70%	47.30%
Management & Administrative	9.15%	0.09%	9.24%	0.00%	9.24%	100.00%	0.00%
General Support	8.43%	0.29%	8.73%	1.97%	10.70%	81.55%	18.45%
Patient & Client Care	9.60%	1.28%	10.89%	2.80%	13.69%	79.54%	20.46%

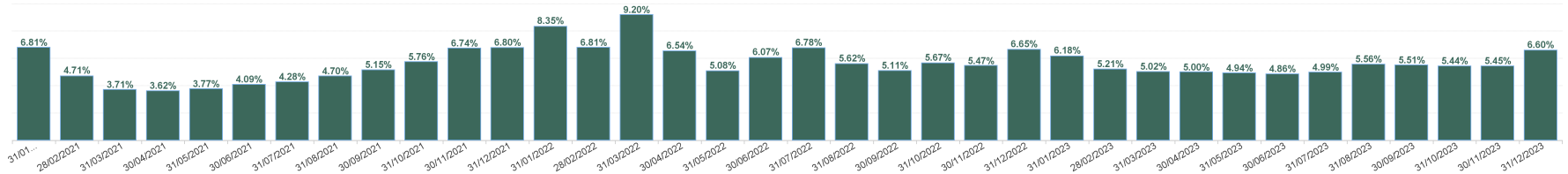
Health Service Absence Rate - by Staff Category: Jul 2024	Certified absence	Self-certified absence	Non Covid-19 absence	Covid-19 Absence	Total absence rate	% Non Covid-19 absence	% Covid-19 absence
Our Lady's Hospice & Care, Wick	8.55%	0.40%	8.95%	0.50%	9.45%	94.68%	5.32%
Medical & Dental	0.00%	2.36%	2.36%	0.00%	2.36%	100.00%	0.00%
Nursing & Midwifery	6.71%	0.26%	6.97%	0.86%	7.83%	88.98%	11.02%
Health & Social Care Professionals	31.32%	0.00%	31.32%	0.00%	31.32%	100.00%	0.00%
Management & Administrative	0.00%	0.00%	0.00%	0.00%	0.00%		
General Support							
Patient & Client Care	11.67%	0.00%	11.67%	0.00%	11.67%	100.00%	0.00%

Health Service Absence Rate - by Staff Category: Jul 2024	Certified absence	Self-certified absence	Non Covid-19 absence	Covid-19 Absence	Total absence rate	% Non Covid-19 absence	% Covid-19 absence
St Francis	5.39%	0.27%	5.67%	0.94%	6.60%	85.81%	14.19%
Medical & Dental	0.00%	0.00%	0.00%	0.00%	0.00%		
Nursing & Midwifery	6.78%	0.16%	6.94%	1.78%	8.73%	79.57%	20.43%
Health & Social Care Professionals	1.94%	0.00%	1.94%	0.00%	1.94%	100.00%	0.00%
Management & Administrative	3.87%	0.13%	4.01%	0.00%	4.01%	100.00%	0.00%
General Support	9.50%	0.00%	9.50%	0.00%	9.50%	100.00%	0.00%
Patient & Client Care	4.55%	1.21%	5.76%	0.99%	6.75%	85.39%	14.61%

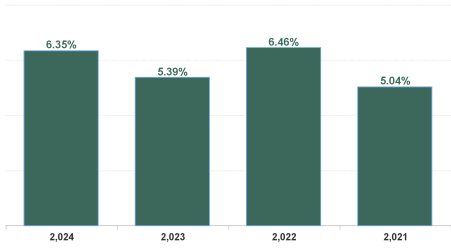
Year / Month	Certified absence	Self-certified absence	Non Covid-19 absence	Covid-19 Absence	Total absence rate	Medical & Dental	Nursing & Midwifery	Health & Social Care Professionals	Management & Administrative	General Support	Patient & Client Care
Jul 2024	5.64%	0.42%	6.06%	1.01%	7.07%	4.16%	7.86%	5.99%	7.02%	8.36%	9.47%
Jun 2024	5.57%	0.40%	5.97%	0.67%	6.65%	3.62%	7.51%	5.59%	6.61%	8.57%	8.30%
May 2024	5.42%	0.40%	5.82%	0.29%	6.11%	3.28%	6.96%	4.90%	6.16%	8.01%	8.01%
Apr 2024	5.22%	0.39%	5.61%	0.17%	5.78%	3.42%	6.75%	4.64%	5.89%	6.69%	6.96%
Mar 2024	5.42%	0.40%	5.82%	0.22%	6.04%	3.47%	7.06%	5.00%	6.30%	6.29%	6.94%
Feb 2024	5.46%	0.40%	5.85%	0.31%	6.16%	3.52%	7.18%	4.75%	6.32%	7.52%	7.08%
Jan 2024	5.49%	0.55%	6.04%	0.60%	6.65%	4.21%	7.55%	5.27%	7.39%	6.35%	7.88%
2024	5.46%	0.42%	5.88%	0.47%	6.35%	3.67%	7.26%	5.16%	6.54%	7.43%	7.80%
Dec 2023	5.46%	0.52%	5.98%	0.62%	6.60%	4.22%	7.31%	5.76%	7.09%	6.16%	7.66%
Nov 2023	4.60%	0.48%	5.08%	0.37%	5.45%	3.60%	6.17%	4.51%	5.54%	6.25%	6.90%
Oct 2023	4.51%	0.43%	4.94%	0.50%	5.44%	3.93%	5.96%	5.00%	5.24%	6.53%	6.49%
Sep 2023	4.46%	0.36%	4.82%	0.70%	5.51%	3.54%	6.03%	5.06%	5.65%	5.92%	6.53%
Aug 2023	4.55%	0.33%	4.88%	0.68%	5.56%	3.48%	6.54%	5.05%	5.37%	7.21%	5.90%
Jul 2023	4.35%	0.29%	4.64%	0.35%	4.99%	3.74%	5.63%	4.14%	4.98%	5.21%	6.34%
Jun 2023	4.35%	0.29%	4.64%	0.22%	4.86%	3.04%	5.93%	3.97%	4.69%	5.68%	5.74%
May 2023	4.26%	0.33%	4.59%	0.35%	4.94%	2.57%	5.96%	4.16%	4.76%	5.84%	6.17%
Apr 2023	4.35%	0.29%	4.64%	0.36%	5.00%	3.64%	5.56%	4.35%	4.87%	5.27%	6.40%
Mar 2023	4.22%	0.35%	4.57%	0.46%	5.02%	3.62%	5.62%	4.25%	4.97%	5.98%	6.33%
Feb 2023	4.41%	0.36%	4.77%	0.43%	5.21%	3.08%	5.91%	3.98%	5.09%	6.13%	7.83%
Jan 2023	4.95%	0.43%	5.37%	0.80%	6.18%	3.29%	7.00%	5.05%	5.94%	8.39%	8.48%
2023	4.53%	0.37%	4.90%	0.49%	5.39%	3.48%	6.13%	4.60%	5.34%	6.23%	6.72%
Dec 2022	5.04%	0.50%	5.54%	1.11%	6.65%	4.22%	7.17%	5.60%	6.82%	8.12%	8.42%
Nov 2022	4.37%	0.43%	4.80%	0.67%	5.47%	3.66%	6.15%	4.60%	5.26%	6.69%	7.10%
Oct 2022	4.49%	0.45%	4.94%	0.73%	5.67%	3.72%	6.40%	4.86%	5.50%	7.65%	6.70%
Sep 2022	4.16%	0.33%	4.50%	0.61%	5.11%	3.40%	6.12%	4.64%	4.29%	6.68%	6.16%
Aug 2022	4.61%	0.29%	4.89%	0.72%	5.62%	3.79%	6.64%	4.64%	5.27%	7.17%	6.73%
Jul 2022	4.52%	0.30%	4.82%	1.96%	6.78%	4.09%	7.66%	5.87%	6.33%	8.34%	8.69%
Jun 2022	3.86%	0.35%	4.21%	1.86%	6.07%	4.05%	6.89%	5.58%	5.54%	8.65%	6.57%
May 2022	3.85%	0.32%	4.17%	0.92%	5.08%	2.76%	6.22%	4.22%	4.31%	6.10%	6.65%
Apr 2022	4.18%	0.34%	4.52%	2.02%	6.54%	3.67%	7.85%	5.91%	5.65%	7.87%	7.73%
Mar 2022	4.42%	0.41%	4.84%	4.36%	9.20%	5.09%	11.29%	8.45%	8.36%	9.11%	10.39%
Feb 2022	3.86%	0.37%	4.23%	2.59%	6.81%	3.99%	8.68%	6.06%	5.45%	6.34%	8.65%
Jan 2022	3.75%	0.29%	4.04%	4.31%	8.35%	5.42%	9.83%	7.24%	7.32%	9.21%	10.35%
2022	4.24%	0.36%	4.61%	1.85%	6.46%	3.98%	7.56%	5.63%	5.85%	7.66%	7.95%
Dec 2021	4.39%	0.29%	4.68%	2.12%	6.80%	4.18%	8.29%	5.83%	5.92%	5.86%	8.69%
Nov 2021	4.61%	0.42%	5.03%	1.71%	6.74%	4.79%	8.00%	5.80%	5.92%	6.36%	8.57%
Oct 2021	4.41%	0.38%	4.79%	0.97%	5.76%	4.10%	6.61%	5.32%	4.89%	5.70%	7.30%
Sep 2021	4.13%	0.30%	4.43%	0.72%	5.15%	3.99%	6.21%	4.57%	4.21%	4.72%	6.53%
Aug 2021	3.88%	0.22%	4.10%	0.61%	4.70%	3.64%	5.81%	3.95%	3.77%	3.85%	6.34%
Jul 2021	3.67%	0.20%	3.87%	0.40%	4.28%	2.76%	4.78%	3.70%	3.84%	3.96%	5.85%
Jun 2021	3.49%	0.23%	3.72%	0.37%	4.09%	2.77%	5.08%	3.35%	3.68%	4.27%	4.80%
May 2021	3.22%	0.18%	3.40%	0.36%	3.77%	2.87%	4.52%	2.88%	3.26%	3.97%	4.96%
Apr 2021	3.02%	0.18%	3.20%	0.42%	3.62%	2.84%	4.23%	2.77%	3.32%	3.58%	4.72%
Mar 2021	2.99%	0.21%	3.20%	0.51%	3.71%	3.29%	4.31%	3.15%	3.25%	3.69%	4.44%
Feb 2021	3.36%	0.27%	3.63%	1.08%	4.71%	3.26%	5.81%	3.83%	4.05%	5.13%	5.92%
Jan 2021	3.78%	0.14%	3.92%	2.90%	6.81%	3.43%	8.52%	5.30%	6.05%	8.86%	8.48%
2021	3.76%	0.25%	4.02%	1.02%	5.04%	3.51%	6.04%	4.23%	4.37%	5.00%	6.41%

Year / Month	Certified absence	Self-certified absence	Non Covid-19 absence	Covid-19 Absence	Total absence rate	CHO 1	CHO 2	CHO 3	CHO 4	CHO 5	CHO 6	CHO 7	CHO 8	CHO 9	Other Comm	Primary Care
Jul 2024	5.64%	0.42%	6.06%	1.01%	7.07%	6.68%	6.28%	7.37%	6.77%	8.31%	7.14%	8.26%	6.64%	6.51%	6.10%	7.07%
Jun 2024	5.57%	0.40%	5.97%	0.67%	6.65%	6.49%	5.58%	7.59%	6.94%	7.45%	5.80%	7.45%	6.38%	5.96%	6.70%	6.65%
May 2024	5.42%	0.40%	5.82%	0.29%	6.11%	5.79%	4.83%	6.51%	6.94%	6.93%	5.90%	6.28%	6.86%	6.03%	4.42%	6.11%
Apr 2024	5.22%	0.39%	5.61%	0.17%	5.78%	5.38%	4.31%	6.62%	5.28%	6.65%	5.61%	6.14%	6.70%	5.85%	3.86%	5.78%
Mar 2024	5.42%	0.40%	5.82%	0.22%	6.04%	5.90%	4.01%	7.74%	5.98%	7.23%	5.83%	6.01%	6.48%	6.03%	3.91%	6.04%
Feb 2024	5.46%	0.40%	5.85%	0.31%	6.16%	5.72%	4.87%	8.03%	5.60%	6.70%	5.37%	6.06%	6.17%	6.41%	5.32%	6.16%
Jan 2024	5.49%	0.55%	6.04%	0.60%	6.65%	6.75%	5.84%	7.18%	5.96%	8.40%	6.36%	6.52%	6.45%	7.04%	4.73%	6.65%
2024	5.46%	0.42%	5.88%	0.47%	6.35%	6.10%	5.09%	7.35%	6.05%	7.40%	6.02%	6.66%	6.53%	6.26%	4.98%	6.35%
Dec 2023	5.46%	0.52%	5.98%	0.62%	6.60%	6.86%	5.24%	7.09%	5.59%	8.39%	6.25%	6.86%	6.29%	7.35%	5.44%	6.60%
Nov 2023	4.60%	0.48%	5.08%	0.37%	5.45%	5.44%	4.06%	6.34%	5.26%	6.34%	5.23%	5.86%	5.36%	5.66%	2.51%	5.45%
Oct 2023	4.51%	0.43%	4.94%	0.50%	5.44%	5.46%	3.18%	6.60%	5.52%	6.50%	5.57%	6.00%	4.95%	5.72%	3.58%	5.44%
Sep 2023	4.46%	0.36%	4.82%	0.70%	5.51%	5.19%	4.00%	7.79%	5.26%	6.07%	5.43%	5.87%	5.48%	5.53%	4.56%	5.51%
Aug 2023	4.55%	0.33%	4.88%	0.68%	5.56%	6.25%	3.04%	7.81%	5.06%	6.48%	4.72%	6.35%	5.89%	5.70%	2.39%	5.56%
Jul 2023	4.35%	0.29%	4.64%	0.35%	4.99%	5.22%	3.01%	5.65%	4.10%	5.94%	4.73%	5.56%	5.74%	5.41%	3.57%	4.99%
Jun 2023	4.35%	0.29%	4.64%	0.22%	4.86%	4.54%	2.91%	4.79%	4.20%	5.95%	4.20%	5.97%	5.67%	5.79%	3.16%	4.86%
May 2023	4.26%	0.33%	4.59%	0.35%	4.94%	4.61%	2.56%	5.05%	4.31%	5.91%	3.86%	6.06%	6.07%	5.59%	4.38%	4.94%
Apr 2023	4.35%	0.29%	4.64%	0.36%	5.00%	5.21%	3.00%	5.65%	4.06%	5.93%	4.07%	5.94%	5.72%	5.48%	0.26%	5.00%
Mar 2023	4.22%	0.35%	4.57%	0.46%	5.02%	4.58%	2.67%	5.32%	4.22%	5.94%	4.72%	6.26%	6.17%	6.80%	4.88%	5.02%
Feb 2023	4.41%	0.36%	4.77%	0.43%	5.21%	4.77%	3.19%	5.80%	3.34%	5.01%	5.70%	6.07%	6.40%	6.39%	4.48%	5.21%
Jan 2023	4.95%	0.43%	5.37%	0.80%	6.18%	6.51%	3.76%	6.69%	4.67%	6.38%	6.62%	6.89%	6.62%	7.02%	5.52%	6.18%
2023	4.53%	0.37%	4.90%	0.49%	5.39%	5.38%	3.36%	6.23%	4.58%	6.23%	5.07%	6.11%	5.87%	6.03%	3.94%	5.39%
Dec 2022	5.04%	0.50%	5.54%	1.11%	6.65%	7.26%	3.22%	7.11%	3.56%	7.77%	7.79%	8.06%	7.31%	8.12%	6.15%	6.65%
Nov 2022	4.37%	0.43%	4.80%	0.67%	5.47%	5.92%	1.92%	7.24%	4.17%	5.86%	5.91%	6.22%	6.27%	6.17%	5.66%	5.47%
Oct 2022	4.49%	0.45%	4.94%	0.73%	5.67%	5.71%	3.21%	7.64%	3.85%	6.09%	6.14%	6.43%	6.14%	6.47%	3.78%	5.67%
Sep 2022	4.16%	0.33%	4.50%	0.61%	5.11%	5.75%	2.26%	6.08%	3.37%	5.95%	5.34%	5.70%	5.75%	5.98%	3.22%	5.11%
Aug 2022	4.61%	0.29%	4.89%	0.72%	5.62%	6.08%	2.67%	7.34%	3.16%	6.96%	6.41%	6.54%	6.02%	6.08%	2.56%	5.62%
Jul 2022	4.52%	0.30%	4.82%	1.96%	6.78%	6.37%	4.31%	8.66%	5.32%	8.24%	7.74%	7.70%	6.55%	7.18%	4.17%	6.78%
Jun 2022	3.86%	0.35%	4.21%	1.86%	6.07%	5.69%	3.73%	7.67%	3.24%	7.76%	6.58%	7.20%	6.47%	6.79%	7.11%	6.07%
May 2022	3.85%	0.32%	4.17%	0.92%	5.08%	4.35%	3.20%	5.89%	3.88%	6.03%	5.96%	6.03%	5.50%	5.10%	3.96%	5.08%
Apr 2022	4.18%	0.34%	4.52%	2.02%	6.54%	5.93%	4.19%	7.91%	6.42%	7.89%	6.76%	7.57%	6.96%	5.56%	5.97%	6.54%
Mar 2022	4.42%	0.41%	4.84%	4.36%	9.20%	9.25%	6.45%	9.70%	7.59%	11.30%	9.10%	10.37%	9.80%	9.16%	4.62%	9.20%
Feb 2022	3.86%	0.37%	4.23%	2.59%	6.81%	7.25%	4.05%	7.28%	5.59%	7.59%	6.16%	8.68%	7.04%	7.15%	3.60%	6.81%
Jan 2022	3.75%	0.29%	4.04%	4.31%	8.35%	8.30%	6.42%	11.39%	6.54%	9.81%	6.62%	8.81%	8.66%	8.63%	5.55%	8.35%
2022	4.24%	0.36%	4.61%	1.85%	6.46%	6.46%	3.77%	7.85%	4.71%	7.62%	6.70%	7.48%	6.91%	6.89%	4.69%	6.46%
Dec 2021	4.39%	0.29%	4.68%	2.12%	6.80%	7.04%	3.88%	8.51%	3.62%	9.36%	6.33%	8.17%	7.63%	7.25%	3.40%	6.80%
Nov 2021	4.61%	0.42%	5.03%	1.71%	6.74%	7.38%	3.50%	7.74%	4.39%	8.07%	6.30%	8.58%	7.35%	7.23%	3.16%	6.74%
Oct 2021	4.41%	0.38%	4.79%	0.97%	5.76%	7.62%	3.00%	6.46%	3.58%	5.79%	5.25%	6.97%	7.03%	5.82%	3.46%	5.76%
Sep 2021	4.13%	0.30%	4.43%	0.72%	5.15%	6.56%	2.68%	6.45%	3.07%	5.50%	5.30%	6.32%	6.20%	5.07%	2.47%	5.15%
Aug 2021	3.88%	0.22%	4.10%	0.61%	4.70%	5.72%	2.45%	5.60%	2.46%	5.38%	4.59%	5.62%	5.15%	5.64%	1.29%	4.70%
Jul 2021	3.67%	0.20%	3.87%	0.40%	4.28%	4.67%	2.12%	5.12%	2.44%	4.82%	3.85%	5.41%	5.21%	5.39%	2.19%	4.28%
Jun 2021	3.49%	0.23%	3.72%	0.37%	4.09%	5.13%	2.18%	4.81%	2.73%	3.62%	4.58%	4.27%	4.22%	2.22%	2.22%	4.09%
May 2021	3.22%	0.18%	3.40%	0.36%	3.77%	4.27%	1.83%	4.51%	2.30%	4.93%	3.19%	4.65%	4.04%	3.38%	2.43%	3.77%
Apr 2021	3.02%	0.18%	3.20%	0.42%	3.62%	4.37%	2.11%	3.79%	1.69%	4.65%	3.15%	4.45%	4.35%	3.58%	1.94%	3.62%
Mar 2021	2.99%	0.21%	3.20%	0.51%	3.71%	4.33%	2.32%	3.13%	2.84%	5.02%	2.94%	4.49%	4.05%	4.04%	2.69%	3.71%
Feb 2021	3.36%	0.27%	3.63%	1.08%	4.71%	4.83%	3.26%	4.07%	3.54%	5.67%	3.91%	5.90%	5.58%	4.73%	2.97%	4.71%
Jan 2021	3.78%	0.14%	3.92%	2.90%	6.81%	7.92%	5.13%	6.18%	3.61%	7.56%	6.26%	7.95%	8.41%	6.82%	6.73%	6.81%
2021	3.76%	0.25%	4.02%	1.02%	5.04%	5.84%	2.85%	5.57%	3.01%	6.06%	4.57%	6.11%	5.78%	5.28%	2.88%	5.04%

Total Absence Rate



Total Absence Rate



% of Absence Non Covid-19 / Covid-19

