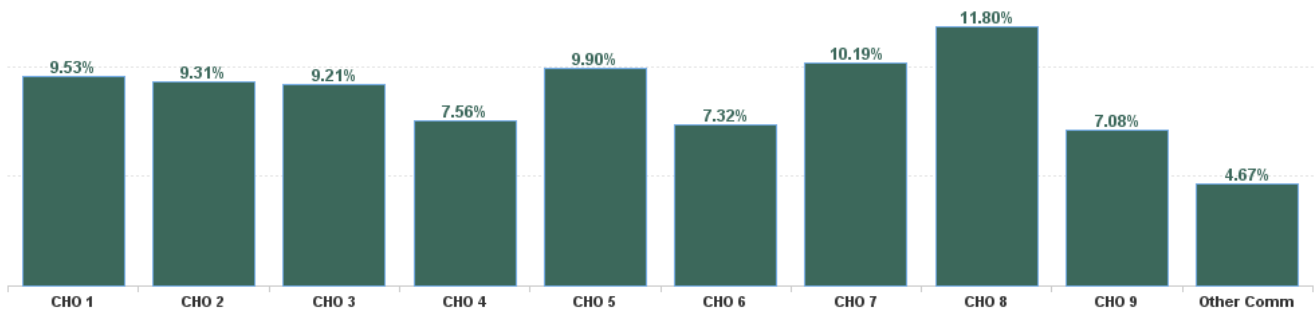


October 2024

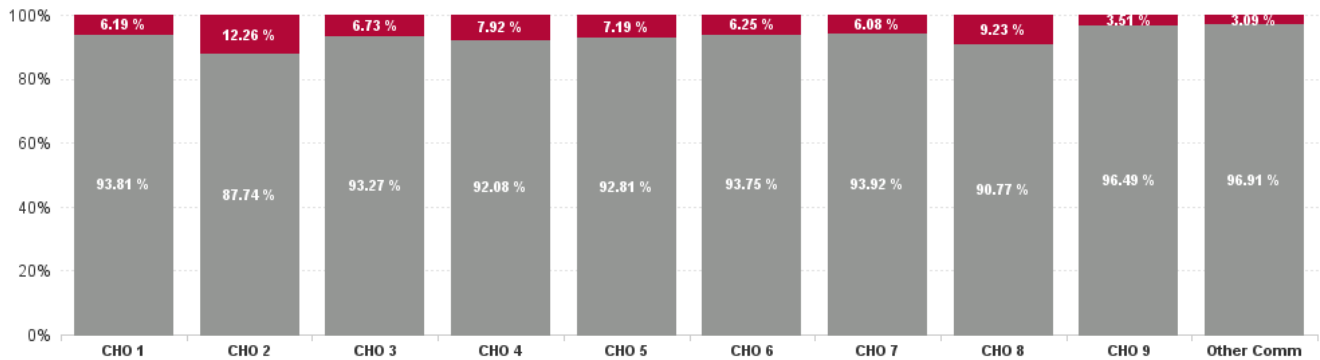
Health Service Absence Rate - by Staff Category: Oct 2024	Certified absence	Self-certified absence	Non Covid-19 absence	Covid-19 Absence	Total absence rate	% Non Covid-19 absence	% Covid-19 absence
Older People	7.62%	0.71%	8.33%	0.68%	9.01%	92.46%	7.54%
Medical & Dental	0.89%	0.32%	1.21%	0.00%	1.21%	100.00%	0.00%
Nursing & Midwifery	7.01%	0.84%	7.85%	0.84%	8.69%	90.39%	9.61%
Health & Social Care Professionals	3.20%	0.56%	3.76%	0.48%	4.24%	88.70%	11.30%
Management & Administrative	4.83%	0.45%	5.28%	0.28%	5.56%	94.99%	5.01%
General Support	7.54%	0.46%	8.00%	0.26%	8.26%	96.83%	3.17%
Patient & Client Care	9.33%	0.75%	10.07%	0.76%	10.84%	92.96%	7.04%

Health Service Absence Rate - by Hospital Group: Oct 2024	Certified absence	Self-certified absence	Non Covid-19 absence	Covid-19 Absence	Total absence rate	% Non Covid-19 absence	% Covid-19 absence
Older People	7.62%	0.71%	8.33%	0.68%	9.01%	92.46%	7.54%
CHO 1	8.28%	0.66%	8.94%	0.59%	9.53%	93.81%	6.19%
CHO 2	7.44%	0.73%	8.17%	1.14%	9.31%	87.74%	12.26%
CHO 3	8.12%	0.47%	8.59%	0.62%	9.21%	93.27%	6.73%
CHO 4	6.25%	0.71%	6.96%	0.60%	7.56%	92.08%	7.92%
CHO 5	8.43%	0.76%	9.19%	0.71%	9.90%	92.81%	7.19%
CHO 6	6.22%	0.64%	6.86%	0.46%	7.32%	93.75%	6.25%
CHO 7	8.78%	0.79%	9.57%	0.62%	10.19%	93.92%	6.08%
CHO 8	9.97%	0.75%	10.72%	1.09%	11.80%	90.77%	9.23%
CHO 9	5.87%	0.96%	6.83%	0.25%	7.08%	96.49%	3.51%
Other Community Services	4.11%	0.42%	4.53%	0.14%	4.67%	96.91%	3.09%

Total Absence Rate

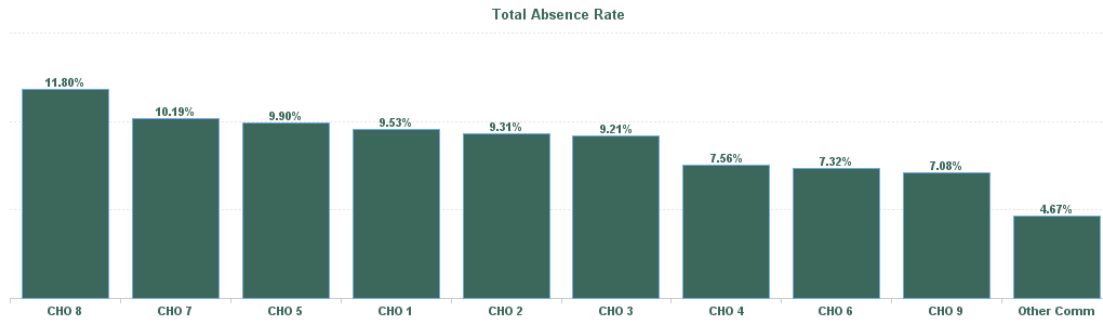


% of Absence Non Covid-19 / Covid-19



October 2024

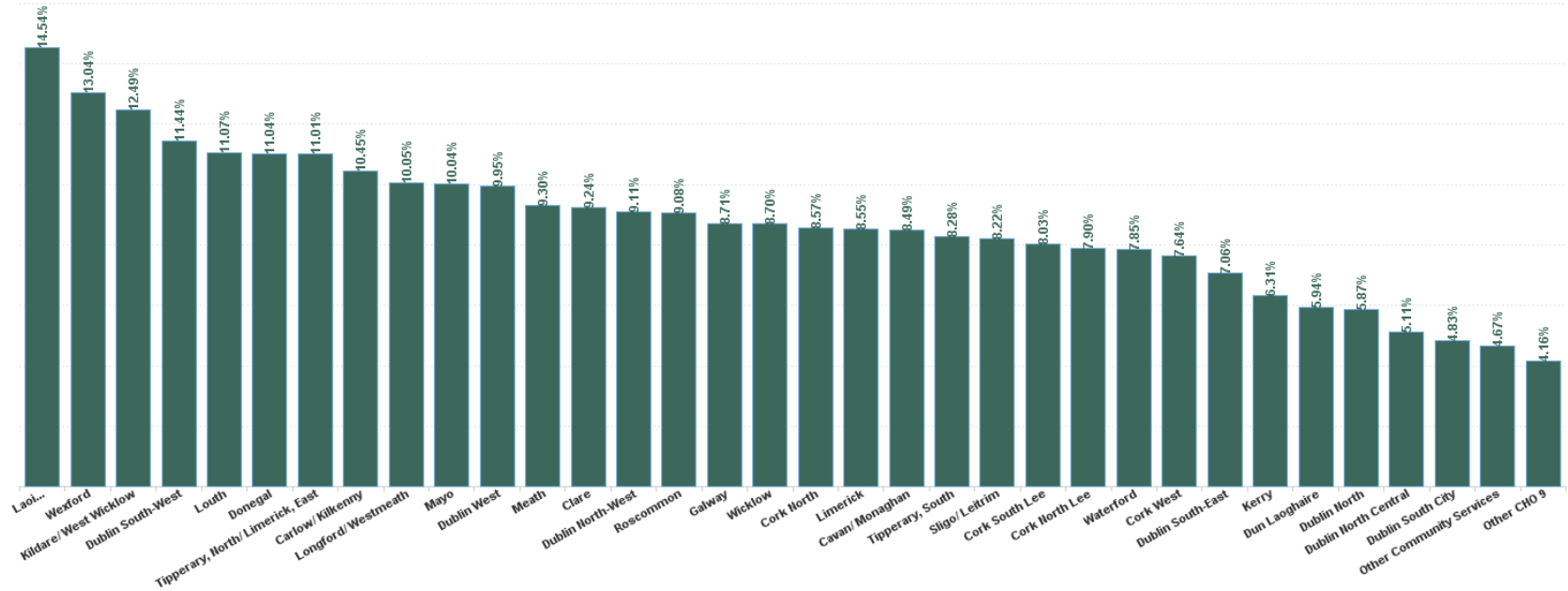
Health Service Absence Rate - by HG, CHO/Care Group & Staff Category : Oct 2024	Certified absence	Self-certified absence	Non Covid-19 absence	Covid-19 Absence	Total absence rate	Medical & Dental	Nursing & Midwifery	Health & Social Care Professionals	Management & Administrative	General Support	Patient & Client Care
Older People	7.62%	0.71%	8.33%	0.68%	9.01%	1.21%	8.69%	4.24%	5.56%	8.26%	10.84%
CHO 1	8.28%	0.66%	8.94%	0.59%	9.53%	0.00%	9.36%	3.89%	7.85%	10.56%	10.40%
CHO 2	7.44%	0.73%	8.17%	1.14%	9.31%	0.00%	10.14%	7.17%	3.54%	6.12%	10.20%
CHO 3	8.12%	0.47%	8.59%	0.62%	9.21%	5.30%	8.78%	3.12%	7.65%	8.03%	10.98%
CHO 4	6.25%	0.71%	6.96%	0.60%	7.56%	1.37%	6.95%	6.93%	3.35%	6.78%	9.31%
CHO 5	8.43%	0.76%	9.19%	0.71%	9.90%	0.00%	11.30%	4.84%	6.10%	7.40%	10.48%
CHO 6	6.22%	0.64%	6.86%	0.46%	7.32%	0.00%	5.49%	2.05%	5.38%	6.71%	10.80%
CHO 7	8.78%	0.79%	9.57%	0.62%	11.80%	0.00%	9.41%	2.99%	7.60%	7.10%	12.68%
CHO 8	9.97%	0.75%	10.72%	1.09%	11.80%	0.00%	9.58%	2.97%	5.20%	11.77%	15.10%
CHO 9	5.87%	0.96%	6.83%	0.25%	7.08%	1.70%	7.43%	4.52%	6.20%	10.04%	6.90%
Other Community Services	4.11%	0.42%	4.53%	0.14%	4.67%		0.64%	0.00%	4.89%		0.00%



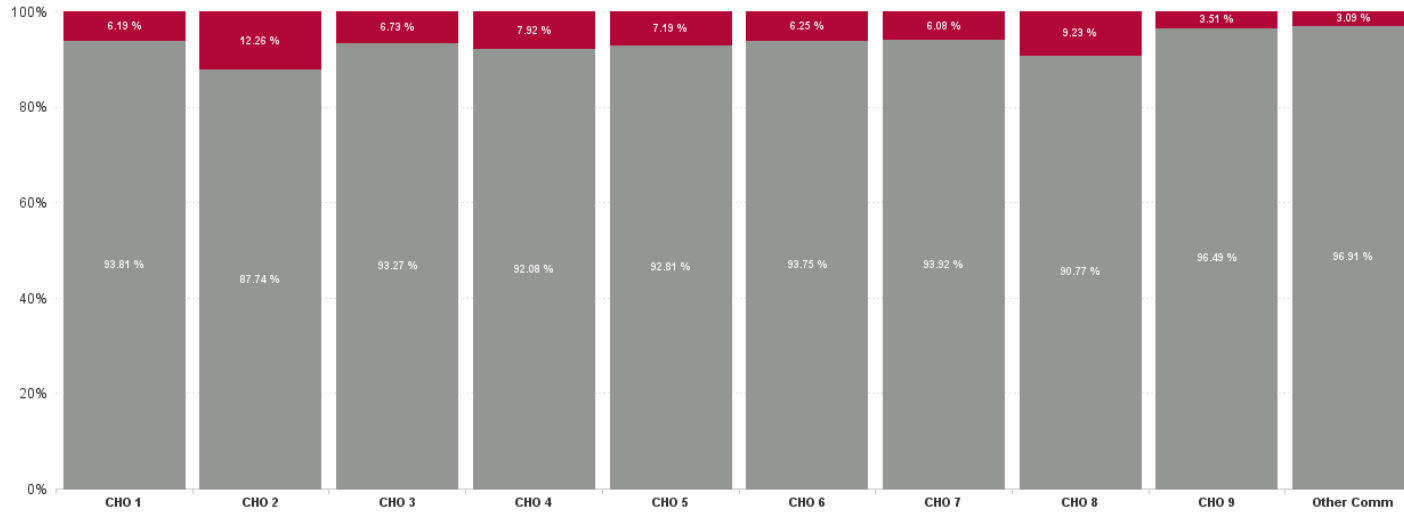
October 2024

Health Service Absence Rate - by HG, CHO/Care Group & Staff Category: Oct 2024	Certified absence	Self-certified absence	Non Covid-19 absence	Covid-19 Absence	Total absence rate	Medical & Dental	Nursing & Midwifery	Health & Social Care Professionals	Management & Administrative	General Support	Patient & Client Care
Total	7.62%	0.71%	8.33%	0.68%	9.01%	1.21%	8.69%	4.24%	5.56%	8.26%	10.84%
Cavan/ Monaghan	7.04%	1.12%	8.16%	0.32%	8.49%	0.00%	8.77%	0.73%	10.05%	4.29%	8.77%
Donegal	9.35%	0.62%	9.97%	1.07%	11.04%	0.00%	10.29%	7.69%	5.98%	15.54%	12.29%
Sligo/ Leitrim	7.71%	0.39%	8.10%	0.12%	8.22%	0.00%	8.34%	2.94%	8.11%	9.29%	8.58%
CHO 1	8.28%	0.66%	8.94%	0.59%	9.53%	0.00%	9.36%	3.89%	7.85%	10.56%	10.40%
Galway	7.05%	0.84%	7.90%	0.81%	8.71%	0.00%	10.48%	8.75%	1.94%	2.50%	9.57%
Mayo	7.35%	0.79%	8.14%	1.90%	10.04%	0.00%	11.39%	7.21%	4.76%	3.21%	10.72%
Roscommon	8.55%	0.32%	8.87%	0.21%	9.08%		6.41%	0.00%	6.81%	12.94%	10.57%
CHO 2	7.44%	0.73%	8.17%	1.14%	9.31%	0.00%	10.14%	7.17%	3.54%	6.12%	10.20%
Clare	8.26%	0.49%	8.75%	0.48%	9.24%	0.00%	9.89%	8.25%	4.12%	11.50%	10.21%
Limerick	7.46%	0.42%	7.89%	0.66%	8.55%	2.76%	7.86%	1.13%	9.96%	8.59%	10.10%
Tipperary, North/ Limerick, East	9.72%	0.54%	10.26%	0.75%	11.01%	39.19%	9.30%	2.32%	11.48%	1.28%	14.29%
CHO 3	8.12%	0.47%	8.59%	0.62%	9.21%	5.30%	8.78%	3.12%	7.65%	8.03%	10.98%
Cork North	6.97%	0.89%	7.86%	0.71%	8.57%	7.88%	9.06%	0.00%	1.11%	0.00%	10.27%
Cork North Lee	6.73%	0.97%	7.70%	0.20%	7.90%	0.00%	4.95%	0.00%	2.11%	4.05%	11.76%
Cork South Lee	6.46%	0.76%	7.22%	0.81%	8.03%	0.00%	7.71%	9.22%	4.18%	5.97%	9.54%
Cork West	5.92%	0.50%	6.43%	1.22%	7.64%	0.00%	5.28%	0.00%	3.06%	12.90%	9.58%
Kerry	5.68%	0.60%	6.28%	0.03%	6.31%	2.07%	7.03%	6.44%	3.69%	6.13%	6.87%
CHO 4	6.25%	0.71%	6.96%	0.60%	7.56%	1.37%	6.95%	6.93%	3.35%	6.78%	9.31%
Carlow/ Kilkenny	7.84%	0.88%	8.72%	1.72%	10.45%	0.00%	9.49%	1.21%	6.39%	1.82%	14.66%
Tipperary, South	7.19%	0.55%	7.74%	0.54%	8.28%	0.00%	11.26%	3.79%	7.52%	6.73%	7.01%
Waterford	7.15%	0.53%	7.68%	0.18%	7.85%	0.00%	9.05%	1.55%	1.52%	15.49%	8.28%
Wexford	11.59%	1.07%	12.66%	0.39%	13.04%	0.00%	15.48%	14.30%	10.65%	9.38%	11.54%
CHO 5	8.43%	0.76%	9.19%	0.71%	9.90%	0.00%	11.30%	4.84%	6.10%	7.40%	10.48%
Dublin South-East	5.77%	0.70%	6.48%	0.58%	7.06%	0.00%	6.50%	2.46%	6.39%	7.76%	8.64%
Dun Laoghaire	5.47%	0.47%	5.94%	0.00%	5.94%		4.11%	0.00%	0.57%	1.96%	12.38%
Wicklow	8.03%	0.48%	8.51%	0.19%	8.70%	0.00%	1.93%	0.00%	5.41%	0.00%	15.72%
CHO 6	6.22%	0.64%	6.86%	0.46%	7.32%	0.00%	5.49%	2.05%	5.38%	6.71%	10.80%
Dublin South City	4.06%	0.68%	4.74%	0.09%	4.83%	0.00%	3.28%	1.17%	4.80%	6.34%	5.98%
Dublin South-West	8.56%	0.53%	9.09%	2.35%	11.44%		10.23%	1.37%	3.81%	6.82%	18.77%
Dublin West	8.89%	0.94%	9.84%	0.11%	9.95%	0.00%	9.19%	2.04%	13.72%	7.04%	13.39%
Kildare/ West Wicklow	11.06%	0.83%	11.89%	0.60%	12.49%	0.00%	12.59%	7.70%	9.25%	8.01%	13.82%
CHO 7	8.78%	0.79%	9.57%	0.62%	10.19%	0.00%	9.41%	2.99%	7.60%	7.10%	12.68%
Laos /Offaly	12.10%	0.70%	12.80%	1.74%	14.54%	0.00%	12.40%	4.55%	11.63%	21.16%	16.13%
Longford/ Westmeath	9.44%	0.55%	9.99%	0.06%	10.05%	0.00%	9.52%	1.87%	4.38%	2.96%	13.88%
Louth	8.68%	1.08%	9.75%	1.32%	11.07%		7.19%	5.76%	0.76%	15.33%	15.77%
Meath	7.43%	0.79%	8.22%	1.08%	9.30%	0.00%	6.14%	0.00%	0.54%	1.60%	13.72%
CHO 8	9.97%	0.75%	10.72%	1.09%	11.80%	0.00%	9.58%	2.97%	5.20%	11.77%	15.10%
Dublin North	4.74%	0.93%	5.67%	0.19%	5.87%		4.15%	4.98%	12.97%	16.66%	1.29%
Dublin North Central	3.90%	0.97%	4.87%	0.23%	5.11%	2.73%	4.49%	4.19%	1.28%	4.50%	7.99%
Dublin North-West	7.86%	0.97%	8.83%	0.28%	9.11%	1.12%	10.29%	5.02%	10.34%	14.38%	6.97%
Other CHO 9	3.41%	0.76%	4.16%	0.00%	4.16%		0.00%		5.07%		
CHO 9	5.87%	0.96%	6.83%	0.25%	7.08%	1.70%	7.43%	4.52%	6.20%	10.04%	6.90%
Other Community Services	4.11%	0.42%	4.53%	0.14%	4.67%		0.64%	0.00%	4.89%		0.00%
Other Community Services	4.11%	0.42%	4.53%	0.14%	4.67%		0.64%	0.00%	4.89%		0.00%
Community Services	7.62%	0.71%	8.33%	0.68%	9.01%	1.21%	8.69%	4.24%	5.56%	8.26%	10.84%

Total Absence Rate



% of Absence Non Covid-19 / Covid-19



October 2024

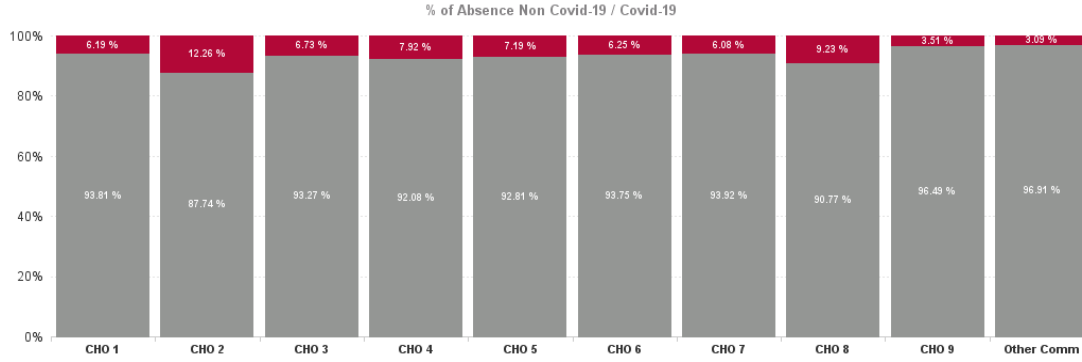
Health Service Covid 19 Absence Rate - by Hospital & Staff Category: Oct 2024	Non Covid-19 absence	Covid-19 absence	Total absence rate	Medical & Dental	Nursing & Midwifery	Health & Social Care Professionals	Management & Administrative	General Support	Patient & Client Care
Older People	8.33%	0.68%	9.01%	0.00%	0.84%	0.48%	0.28%	0.26%	0.76%
Cavan/ Monaghan	8.16%	0.32%	8.49%	0.00%	0.37%	0.00%	0.43%	0.00%	0.32%
Donegal	9.97%	1.07%	11.04%	0.00%	0.81%	0.00%	0.00%	0.00%	1.65%
Sligo/ Leitrim	8.10%	0.12%	8.22%	0.00%	0.06%	0.54%	0.08%	0.33%	0.00%
CHO 1	8.94%	0.59%	9.53%	0.00%	0.48%	0.31%	0.15%	0.20%	0.87%
Galway	7.90%	0.81%	8.71%	0.00%	2.18%	0.00%	0.38%	0.00%	0.26%
Mayo	8.14%	1.90%	10.04%	0.00%	3.77%	0.00%	1.23%	2.84%	0.79%
Roscommon	8.87%	0.21%	9.08%		0.00%	0.00%	0.00%	0.00%	0.42%
CHO 2	8.17%	1.14%	9.31%	0.00%	2.47%	0.00%	0.68%	0.74%	0.50%
Clare	8.75%	0.48%	9.24%	0.00%	1.12%	0.00%	0.00%	0.67%	0.04%
Limerick	7.89%	0.66%	8.55%	0.00%	0.27%	0.00%	0.88%	1.81%	0.77%
Tipperary, North/ Limerick, East	10.26%	0.75%	11.01%	0.00%	1.69%	0.00%	0.00%	0.66%	0.26%
CHO 3	8.59%	0.62%	9.21%	0.00%	0.80%	0.00%	0.36%	1.32%	0.44%
Cork North	7.86%	0.71%	8.57%	0.00%	1.89%	0.00%	0.00%	0.00%	0.00%
Cork North Lee	7.70%	0.20%	7.90%	0.00%	0.56%	0.00%	0.00%	0.00%	0.00%
Cork South Lee	7.22%	0.81%	8.03%	0.00%	0.38%	1.69%	0.37%	0.00%	1.36%
Cork West	6.43%	1.22%	7.64%	0.00%	0.74%	0.00%	0.00%	0.00%	1.87%
Kerry	6.28%	0.03%	6.31%	0.00%	0.00%	1.92%	0.00%	0.00%	0.00%
CHO 4	6.96%	0.60%	7.56%	0.00%	0.53%	1.43%	0.12%	0.00%	0.84%
Carlow/ Kilkenny	8.72%	1.72%	10.45%	0.00%	3.13%	0.00%	0.00%	0.00%	1.40%
Tipperary, South	7.74%	0.54%	8.28%	0.00%	0.18%	3.79%	0.96%	0.00%	0.46%
Waterford	7.68%	0.18%	7.85%	0.00%	0.24%	0.00%	0.00%	0.00%	0.19%
Wexford	12.66%	0.39%	13.04%	0.00%	0.54%	0.00%	0.00%	0.00%	0.40%
CHO 5	9.19%	0.71%	9.90%	0.00%	1.03%	0.86%	0.21%	0.00%	0.62%
Dublin South-East	6.48%	0.58%	7.06%	0.00%	1.00%	0.39%	0.36%	0.00%	0.54%
Dun Laoghaire	5.94%	0.00%	5.94%		0.00%	0.00%	0.00%	0.00%	0.00%
Wicklow	8.51%	0.19%	8.70%	0.00%	0.00%	0.00%	0.00%	0.00%	0.40%
CHO 6	6.86%	0.46%	7.32%	0.00%	0.74%	0.33%	0.20%	0.00%	0.46%
Dublin South City	4.74%	0.09%	4.83%	0.00%	0.00%	0.00%	4.80%	0.00%	0.00%
Dublin South-West	9.09%	2.35%	11.44%		2.38%	1.37%	0.00%	1.38%	3.82%
Dublin West	9.84%	0.11%	9.95%	0.00%	0.00%	0.00%	0.00%	0.00%	0.33%
Kildare/ West Wicklow	11.89%	0.60%	12.49%	0.00%	0.56%	0.00%	0.75%	0.00%	0.72%
CHO 7	9.57%	0.62%	10.19%	0.00%	0.56%	0.18%	0.67%	0.17%	0.83%
Laois /Offaly	12.80%	1.74%	14.54%	0.00%	1.24%	0.00%	0.00%	0.00%	2.52%
Longford/ Westmeath	9.99%	0.06%	10.05%	0.00%	0.00%	0.00%	0.41%	0.00%	0.00%
Louth	9.75%	1.32%	11.07%		0.25%	5.18%	0.00%	0.00%	2.13%
Meath	8.22%	1.08%	9.30%	0.00%	0.99%	0.00%	0.00%	0.00%	1.42%
CHO 8	10.72%	1.09%	11.80%	0.00%	0.69%	1.21%	0.19%	0.00%	1.62%
Dublin North	5.67%	0.19%	5.87%		0.51%	0.00%	0.00%	0.00%	0.00%
Dublin North Central	4.87%	0.23%	5.11%	0.00%	0.45%	0.62%	0.00%	0.00%	0.00%
Dublin North-West	8.83%	0.28%	9.11%	0.00%	0.33%	0.00%	1.35%	0.27%	0.10%

Other CHO 9	4.16%	0.00%	4.16%
CHO 9	6.83%	0.25%	7.08%
Other Community Services	4.53%	0.14%	4.67%
Other Community Services	4.53%	0.14%	4.67%
Community Services	8.33%	0.68%	9.01%

	0.00%		0.00%		
0.00%	0.39%	0.37%	0.44%	0.13%	0.05%
	0.00%	0.00%	0.15%		0.00%
	0.00%	0.00%	0.15%		0.00%
0.00%	0.84%	0.48%	0.28%	0.26%	0.76%

October 2024

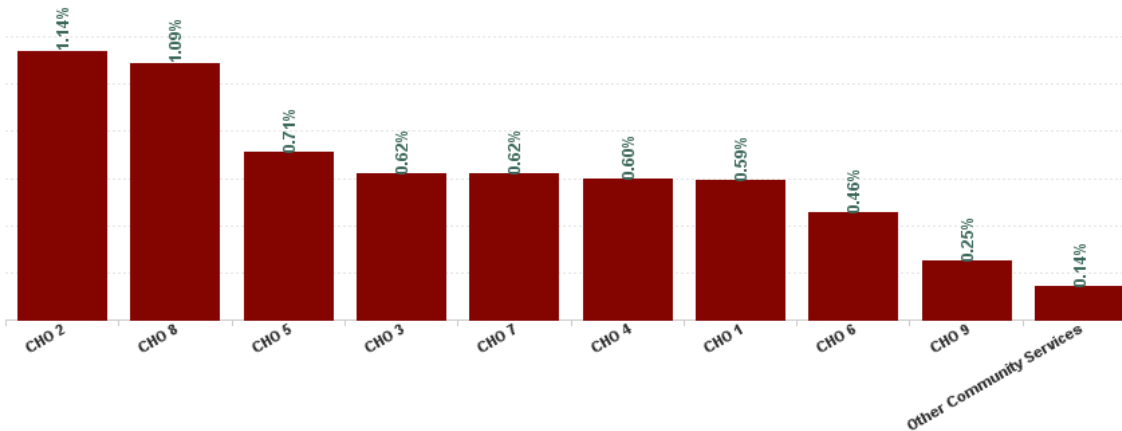
Health Service Absence Rate - by HG, CHO/Care Group & Staff Category: Oct 2024	Certified absence	Self-certified absence	Non Covid-19 absence	Covid-19 Absence	Total absence rate	Medical & Dental	Nursing & Midwifery	Health & Social Care Professionals	Management & Administrative	General Support	Patient & Client Care
Total	7.62%	0.71%	8.33%	0.68%	9.01%	1.21%	8.69%	4.24%	5.56%	8.26%	10.84%
Health Service Executive	8.28%	0.66%	8.94%	0.59%	9.53%	0.00%	9.36%	3.89%	7.85%	10.56%	10.40%
CHO 1	8.28%	0.66%	8.94%	0.59%	9.53%	0.00%	9.36%	3.89%	7.85%	10.56%	10.40%
Health Service Executive	7.44%	0.73%	8.17%	1.14%	9.31%	0.00%	10.14%	7.17%	3.54%	6.12%	10.20%
CHO 2	7.44%	0.73%	8.17%	1.14%	9.31%	0.00%	10.14%	7.17%	3.54%	6.12%	10.20%
Health Service Executive	8.61%	0.51%	9.11%	0.67%	9.79%	5.30%	9.49%	3.12%	7.73%	8.57%	11.79%
Section 38 Voluntary Agencies	2.51%	0.00%	2.51%	0.00%	2.51%		1.92%		0.00%	2.21%	3.17%
CHO 3	8.12%	0.47%	8.59%	0.62%	9.21%	5.30%	8.78%	3.12%	7.65%	8.03%	10.98%
Health Service Executive	6.45%	0.70%	7.15%	0.61%	7.76%	1.40%	7.26%	6.93%	3.35%	6.78%	9.57%
Section 38 Voluntary Agencies	1.01%	1.01%	2.02%	0.18%	2.21%	0.00%	0.87%				3.49%
CHO 4	6.25%	0.71%	6.96%	0.60%	7.56%	1.37%	6.95%	6.93%	3.35%	6.78%	9.31%
Health Service Executive	8.43%	0.76%	9.19%	0.71%	9.90%	0.00%	11.30%	4.84%	6.10%	7.40%	10.48%
CHO 5	8.43%	0.76%	9.19%	0.71%	9.90%	0.00%	11.30%	4.84%	6.10%	7.40%	10.48%
Health Service Executive	7.21%	0.59%	7.80%	0.51%	8.31%	0.00%	5.05%	0.00%	4.29%	4.83%	14.26%
Section 38 Voluntary Agencies	5.45%	0.68%	6.13%	0.42%	6.55%	0.00%	5.90%	2.66%	6.69%	7.53%	7.79%
CHO 6	6.22%	0.64%	6.86%	0.46%	7.32%	0.00%	5.49%	2.05%	5.38%	6.71%	10.80%
Health Service Executive	8.78%	0.79%	9.57%	0.62%	10.19%	0.00%	9.41%	2.99%	7.60%	7.10%	12.68%
CHO 7	8.78%	0.79%	9.57%	0.62%	10.19%	0.00%	9.41%	2.99%	7.60%	7.10%	12.68%
Health Service Executive	9.97%	0.75%	10.72%	1.09%	11.80%	0.00%	9.58%	2.97%	5.20%	11.77%	15.10%
CHO 8	9.97%	0.75%	10.72%	1.09%	11.80%	0.00%	9.58%	2.97%	5.20%	11.77%	15.10%
Health Service Executive	6.97%	1.03%	8.00%	0.24%	8.24%	1.07%	8.21%	5.51%	7.52%	13.59%	7.54%
Section 38 Voluntary Agencies	2.98%	0.79%	3.77%	0.28%	4.05%	2.95%	4.97%	3.39%	1.29%	2.92%	4.92%
CHO 9	5.87%	0.96%	6.83%	0.25%	7.08%	1.70%	7.43%	4.52%	6.20%	10.04%	6.90%
Health Service Executive	4.11%	0.42%	4.53%	0.14%	4.67%		0.64%	0.00%	4.89%		0.00%
Other Community Services	4.11%	0.42%	4.53%	0.14%	4.67%		0.64%	0.00%	4.89%		0.00%
Community Services	7.62%	0.71%	8.33%	0.68%	9.01%	1.21%	8.69%	4.24%	5.56%	8.26%	10.84%



October 2024

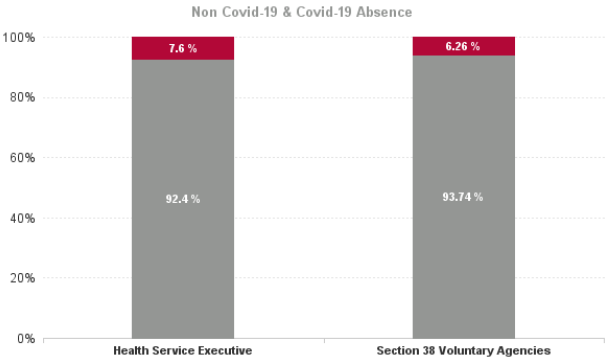
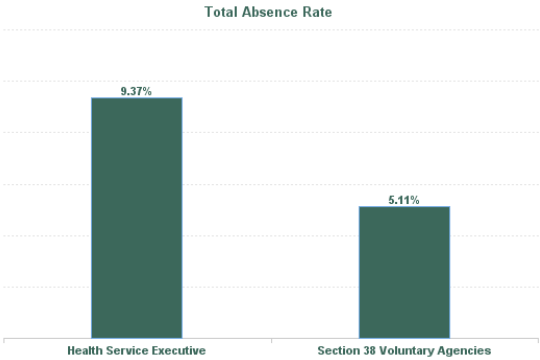
Health Service Covid 19 Absence Rate - by Hospital & Staff Category: Oct 2024	Non Covid-19 absence	Covid-19 Absence	Total absence rate	Medical & Dental	Nursing & Midwifery	Health & Social Care Professionals	Management & Administrative	General Support	Patient & Client Care
Older People	8.33%	0.68%	9.01%	0.00%	0.84%	0.48%	0.28%	0.26%	0.76%
Health Service Executive	8.94%	0.59%	9.53%	0.00%	0.48%	0.31%	0.15%	0.20%	0.87%
CHO 1	8.94%	0.59%	9.53%	0.00%	0.48%	0.31%	0.15%	0.20%	0.87%
Health Service Executive	8.17%	1.14%	9.31%	0.00%	2.47%	0.00%	0.68%	0.74%	0.50%
CHO 2	8.17%	1.14%	9.31%	0.00%	2.47%	0.00%	0.68%	0.74%	0.50%
Health Service Executive	9.11%	0.67%	9.79%	0.00%	0.88%	0.00%	0.36%	1.44%	0.49%
Section 38 Voluntary Agencies	2.51%	0.00%	2.51%		0.00%		0.00%	0.00%	0.00%
CHO 3	8.59%	0.62%	9.21%	0.00%	0.80%	0.00%	0.36%	1.32%	0.44%
Health Service Executive	7.15%	0.61%	7.76%	0.00%	0.55%	1.43%	0.12%	0.00%	0.86%
Section 38 Voluntary Agencies	2.02%	0.18%	2.21%	0.00%	0.00%				0.35%
CHO 4	6.96%	0.60%	7.56%	0.00%	0.53%	1.43%	0.12%	0.00%	0.84%
Health Service Executive	9.19%	0.71%	9.90%	0.00%	1.03%	0.86%	0.21%	0.00%	0.62%
CHO 5	9.19%	0.71%	9.90%	0.00%	1.03%	0.86%	0.21%	0.00%	0.62%
Health Service Executive	7.80%	0.51%	8.31%	0.00%	0.86%	0.00%	0.36%	0.00%	0.40%
Section 38 Voluntary Agencies	6.13%	0.42%	6.55%	0.00%	0.64%	0.43%	0.00%	0.00%	0.52%
CHO 6	6.86%	0.46%	7.32%	0.00%	0.74%	0.33%	0.20%	0.00%	0.46%
Health Service Executive	9.57%	0.62%	10.19%	0.00%	0.56%	0.18%	0.67%	0.17%	0.83%
CHO 7	9.57%	0.62%	10.19%	0.00%	0.56%	0.18%	0.67%	0.17%	0.83%
Health Service Executive	10.72%	1.09%	11.80%	0.00%	0.69%	1.21%	0.19%	0.00%	1.62%
CHO 8	10.72%	1.09%	11.80%	0.00%	0.69%	1.21%	0.19%	0.00%	1.62%
Health Service Executive	8.00%	0.24%	8.24%	0.00%	0.37%	0.00%	0.55%	0.19%	0.07%
Section 38 Voluntary Agencies	3.77%	0.28%	4.05%	0.00%	0.47%	0.80%	0.00%	0.00%	0.00%
CHO 9	6.83%	0.25%	7.08%	0.00%	0.39%	0.37%	0.44%	0.13%	0.05%
Health Service Executive	4.53%	0.14%	4.67%		0.00%	0.00%	0.15%		0.00%
Other Community Services	4.53%	0.14%	4.67%		0.00%	0.00%	0.15%		0.00%
Community Services	8.33%	0.68%	9.01%	0.00%	0.84%	0.48%	0.28%	0.26%	0.76%

Covid 19 Absence Rate



October 2024

Health Service Absence Rate - by Admin : Oct 2024	Certified absence	Self-certified absence	Non Covid-19 absence	Covid-19 Absence	Total absence rate	Medical & Dental	Nursing & Midwifery	Health & Social Care Professionals	Management & Administrative	General Support	Patient & Client Care
Total	7.62%	0.71%	8.33%	0.68%	9.01%	1.21%	8.69%	4.24%	5.56%	8.26%	10.84%
Health Service Executive	7.94%	0.72%	8.66%	0.71%	9.37%	1.13%	9.04%	4.57%	5.61%	8.69%	11.18%
Section 38 Voluntary Agencies	4.11%	0.68%	4.79%	0.32%	5.11%	1.97%	4.63%	3.02%	4.69%	5.75%	6.08%



Health Service Absence Rate - by Staff Category: Oct 2024	Certified absence	Self- certified absence	Non Covid-19 absence	Covid-19 Absence	Total absence rate	% Non Covid-19 absence	% Covid-19 absence
CHO 1	8.28%	0.66%	8.94%	0.59%	9.53%	93.81%	6.19%
Medical & Dental	0.00%	0.00%	0.00%	0.00%	0.00%		
Nursing & Midwifery	7.80%	1.08%	8.88%	0.48%	9.36%	94.88%	5.12%
Health & Social Care Professionals	3.02%	0.56%	3.58%	0.31%	3.89%	91.94%	8.06%
Management & Administrative	7.34%	0.36%	7.70%	0.15%	7.85%	98.13%	1.87%
General Support	10.15%	0.20%	10.36%	0.20%	10.56%	98.10%	1.90%
Patient & Client Care	8.99%	0.54%	9.53%	0.87%	10.40%	91.60%	8.40%

Health Service Absence Rate - by Staff Category: Oct 2024	Certified absence	Self- certified absence	Non Covid-19 absence	Covid-19 Absence	Total absence rate	% Non Covid-19 absence	% Covid-19 absence
CHO 2	7.44%	0.73%	8.17%	1.14%	9.31%	87.74%	12.26%
Medical & Dental	0.00%	0.00%	0.00%	0.00%	0.00%		
Nursing & Midwifery	6.71%	0.96%	7.67%	2.47%	10.14%	75.61%	24.39%
Health & Social Care Professionals	6.84%	0.33%	7.17%	0.00%	7.17%	100.00%	0.00%
Management & Administrative	2.58%	0.29%	2.87%	0.68%	3.54%	80.92%	19.08%
General Support	5.02%	0.36%	5.38%	0.74%	6.12%	87.98%	12.02%
Patient & Client Care	8.98%	0.72%	9.71%	0.50%	10.20%	95.13%	4.87%

Health Service Absence Rate - by Staff Category: Oct 2024	Certified absence	Self-certified absence	Non Covid-19 absence	Covid-19 Absence	Total absence rate	% Non Covid-19 absence	% Covid-19 absence
CHO 3	8.12%	0.47%	8.59%	0.62%	9.21%	93.27%	6.73%
Medical & Dental	5.30%	0.00%	5.30%	0.00%	5.30%	100.00%	0.00%
Nursing & Midwifery	7.40%	0.59%	7.99%	0.80%	8.78%	90.95%	9.05%
Health & Social Care Professionals	2.90%	0.23%	3.12%	0.00%	3.12%	100.00%	0.00%
Management & Administrative	6.83%	0.46%	7.29%	0.36%	7.65%	95.30%	4.70%
General Support	6.54%	0.17%	6.71%	1.32%	8.03%	83.56%	16.44%
Patient & Client Care	10.08%	0.46%	10.54%	0.44%	10.98%	95.97%	4.03%

Health Service Absence Rate - by Staff Category: Oct 2024	Certified absence	Self-certified absence	Non Covid-19 absence	Covid-19 Absence	Total absence rate	% Non Covid-19 absence	% Covid-19 absence
CHO 4	6.25%	0.71%	6.96%	0.60%	7.56%	92.08%	7.92%
Medical & Dental	1.37%	0.00%	1.37%	0.00%	1.37%	100.00%	0.00%
Nursing & Midwifery	5.74%	0.69%	6.43%	0.53%	6.95%	92.41%	7.59%
Health & Social Care Professionals	4.97%	0.53%	5.50%	1.43%	6.93%	79.33%	20.67%
Management & Administrative	2.77%	0.46%	3.23%	0.12%	3.35%	96.42%	3.58%
General Support	5.95%	0.84%	6.78%	0.00%	6.78%	100.00%	0.00%
Patient & Client Care	7.68%	0.80%	8.48%	0.84%	9.31%	91.03%	8.97%

Health Service Absence Rate - by Staff Category: Oct 2024	Certified absence	Self-certified absence	Non Covid-19 absence	Covid-19 Absence	Total absence rate	% Non Covid-19 absence	% Covid-19 absence
CHO 5	8.43%	0.76%	9.19%	0.71%	9.90%	92.81%	7.19%
Medical & Dental	0.00%	0.00%	0.00%	0.00%	0.00%		
Nursing & Midwifery	9.49%	0.78%	10.26%	1.03%	11.30%	90.86%	9.14%
Health & Social Care Professionals	3.36%	0.63%	3.99%	0.86%	4.84%	82.34%	17.66%
Management & Administrative	5.37%	0.52%	5.89%	0.21%	6.10%	96.58%	3.42%
General Support	7.00%	0.40%	7.40%	0.00%	7.40%	100.00%	0.00%
Patient & Client Care	8.99%	0.87%	9.86%	0.62%	10.48%	94.10%	5.90%

Health Service Absence Rate - by Staff Category: Oct 2024	Certified absence	Self-certified absence	Non Covid-19 absence	Covid-19 Absence	Total absence rate	% Non Covid-19 absence	% Covid-19 absence
CHO 6	6.22%	0.64%	6.86%	0.46%	7.32%	93.75%	6.25%
Medical & Dental	0.00%	0.00%	0.00%	0.00%	0.00%		
Nursing & Midwifery	4.01%	0.74%	4.74%	0.74%	5.49%	86.45%	13.55%
Health & Social Care Professionals	0.82%	0.90%	1.72%	0.33%	2.05%	84.00%	16.00%
Management & Administrative	4.69%	0.49%	5.19%	0.20%	5.38%	96.38%	3.62%
General Support	6.08%	0.63%	6.71%	0.00%	6.71%	100.00%	0.00%
Patient & Client Care	9.79%	0.55%	10.33%	0.46%	10.80%	95.70%	4.30%

Health Service Absence Rate - by Staff Category: Oct 2024	Certified absence	Self-certified absence	Non Covid-19 absence	Covid-19 Absence	Total absence rate	% Non Covid-19 absence	% Covid-19 absence
CHO 7	8.78%	0.79%	9.57%	0.62%	10.19%	93.92%	6.08%
Medical & Dental	0.00%	0.00%	0.00%	0.00%	0.00%		
Nursing & Midwifery	7.88%	0.97%	8.85%	0.56%	9.41%	94.03%	5.97%
Health & Social Care Professionals	2.25%	0.56%	2.81%	0.18%	2.99%	93.91%	6.09%
Management & Administrative	6.51%	0.43%	6.94%	0.67%	7.60%	91.24%	8.76%
General Support	6.68%	0.24%	6.93%	0.17%	7.10%	97.60%	2.40%
Patient & Client Care	10.98%	0.88%	11.86%	0.83%	12.68%	93.49%	6.51%

Health Service Absence Rate - by Staff Category: Oct 2024	Certified absence	Self-certified absence	Non Covid-19 absence	Covid-19 Absence	Total absence rate	% Non Covid-19 absence	% Covid-19 absence
CHO 8	9.97%	0.75%	10.72%	1.09%	11.80%	90.77%	9.23%
Medical & Dental	0.00%	0.00%	0.00%	0.00%	0.00%		
Nursing & Midwifery	8.17%	0.72%	8.89%	0.69%	9.58%	92.80%	7.20%
Health & Social Care Professionals	1.76%	0.00%	1.76%	1.21%	2.97%	59.17%	40.83%
Management & Administrative	4.49%	0.53%	5.01%	0.19%	5.20%	96.37%	3.63%
General Support	11.07%	0.70%	11.77%	0.00%	11.77%	100.00%	0.00%
Patient & Client Care	12.61%	0.87%	13.48%	1.62%	15.10%	89.25%	10.75%

Health Service Absence Rate - by Staff Category: Oct 2024	Certified absence	Self-certified absence	Non Covid-19 absence	Covid-19 Absence	Total absence rate	% Non Covid-19 absence	% Covid-19 absence
Incorporated Orthopaedic Hospital	2.98%	0.79%	3.77%	0.28%	4.05%	93.13%	6.87%
Medical & Dental	0.00%	2.95%	2.95%	0.00%	2.95%	100.00%	0.00%
Nursing & Midwifery	3.74%	0.77%	4.51%	0.47%	4.97%	90.65%	9.35%
Health & Social Care Professionals	1.39%	1.20%	2.59%	0.80%	3.39%	76.35%	23.65%
Management & Administrative	0.85%	0.44%	1.29%	0.00%	1.29%	100.00%	0.00%
General Support	2.70%	0.22%	2.92%	0.00%	2.92%	100.00%	0.00%
Patient & Client Care	4.16%	0.76%	4.92%	0.00%	4.92%	100.00%	0.00%

Health Service Absence Rate - by Staff Category: Oct 2024	Certified absence	Self-certified absence	Non Covid-19 absence	Covid-19 Absence	Total absence rate	% Non Covid-19 absence	% Covid-19 absence
Leopardstown Park Hospital	6.23%	0.72%	6.95%	0.81%	7.76%	89.55%	10.45%
Medical & Dental	0.00%	0.00%	0.00%	0.00%	0.00%		
Nursing & Midwifery	4.68%	0.86%	5.53%	1.23%	6.77%	81.77%	18.23%
Health & Social Care Professionals	2.63%	0.00%	2.63%	1.50%	4.14%	63.64%	36.36%
Management & Administrative	1.07%	0.00%	1.07%	0.00%	1.07%	100.00%	0.00%
General Support	6.77%	0.73%	7.50%	0.00%	7.50%	100.00%	0.00%
Patient & Client Care	8.84%	0.91%	9.75%	1.03%	10.79%	90.42%	9.58%

Health Service Absence Rate - by Staff Category: Oct 2024	Certified absence	Self- certified absence	Non Covid-19 absence	Covid-19 Absence	Total absence rate	% Non Covid-19 absence	% Covid-19 absence
Marymount OP	1.01%	1.01%	2.02%	0.18%	2.21%	91.81%	8.19%
Medical & Dental	0.00%	0.00%	0.00%	0.00%	0.00%		
Nursing & Midwifery	0.43%	0.43%	0.87%	0.00%	0.87%	100.00%	0.00%
Health & Social Care Professionals							
Management & Administrative							
General Support							
Patient & Client Care	1.57%	1.57%	3.14%	0.35%	3.49%	89.92%	10.08%

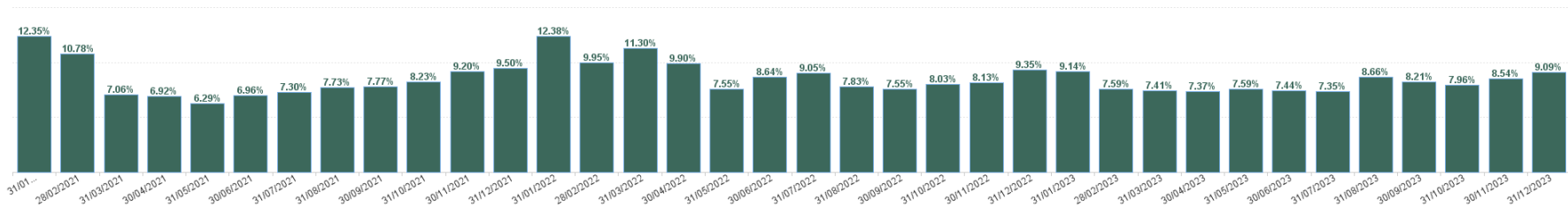
Health Service Absence Rate - by Staff Category: Oct 2024	Certified absence	Self- certified absence	Non Covid-19 absence	Covid-19 Absence	Total absence rate	% Non Covid-19 absence	% Covid-19 absence
Milford Care Centre OP	2.51%	0.00%	2.51%	0.00%	2.51%	100.00%	0.00%
Medical & Dental							
Nursing & Midwifery	1.92%	0.00%	1.92%	0.00%	1.92%	100.00%	0.00%
Health & Social Care Professionals							
Management & Administrative	0.00%	0.00%	0.00%	0.00%	0.00%		
General Support	2.21%	0.00%	2.21%	0.00%	2.21%	100.00%	0.00%
Patient & Client Care	3.17%	0.00%	3.17%	0.00%	3.17%	100.00%	0.00%

Health Service Absence Rate - by Staff Category: Oct 2024	Certified absence	Self- certified absence	Non Covid-19 absence	Covid-19 Absence	Total absence rate	% Non Covid-19 absence	% Covid-19 absence
Royal Hospital, Donnybrook, Dub	4.81%	0.65%	5.45%	0.09%	5.54%	98.40%	1.60%
Medical & Dental	0.00%	0.00%	0.00%	0.00%	0.00%		
Nursing & Midwifery	4.57%	0.51%	5.09%	0.26%	5.34%	95.18%	4.82%
Health & Social Care Professionals	0.44%	1.63%	2.07%	0.00%	2.07%	100.00%	0.00%
Management & Administrative	13.51%	0.73%	14.24%	0.00%	14.24%	100.00%	0.00%
General Support	6.61%	0.94%	7.55%	0.00%	7.55%	100.00%	0.00%
Patient & Client Care	4.49%	0.27%	4.76%	0.00%	4.76%	100.00%	0.00%

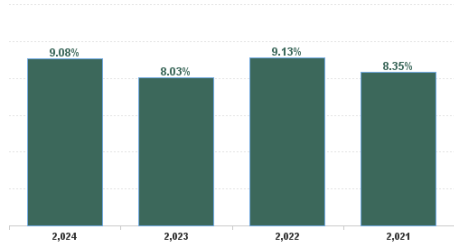
Year / Month	Certified absence	Self-certified absence	Non Covid-19 absence	Covid-19 Absence	Total absence rate	Medical & Dental	Nursing & Midwifery	Health & Social Care Professionals	Management & Administrative	General Support	Patient & Client Care
Oct 2024	7.62%	0.71%	8.33%	0.68%	9.01%	1.21%	8.69%	4.24%	5.56%	8.26%	10.84%
Sep 2024	7.82%	0.75%	8.57%	0.88%	9.46%	2.14%	9.26%	5.02%	6.19%	9.06%	11.02%
Aug 2024	7.81%	0.64%	8.45%	1.03%	9.48%	1.98%	9.00%	5.62%	6.42%	10.32%	10.85%
Jul 2024	8.20%	0.70%	8.90%	1.21%	10.11%	1.81%	9.63%	4.72%	6.81%	10.55%	11.79%
Jun 2024	7.40%	0.73%	8.13%	1.14%	9.27%	1.60%	8.58%	5.42%	5.89%	10.16%	10.79%
May 2024	7.18%	0.71%	7.88%	0.63%	8.51%	1.44%	8.21%	4.46%	5.72%	9.25%	9.76%
Apr 2024	7.20%	0.74%	7.94%	0.53%	8.47%	0.72%	8.23%	4.78%	5.55%	8.36%	9.82%
Mar 2024	7.29%	0.65%	7.93%	0.50%	8.43%	1.74%	8.19%	5.71%	5.64%	8.14%	9.68%
Feb 2024	7.12%	0.68%	7.81%	0.60%	8.41%	1.51%	8.36%	4.53%	5.02%	8.03%	9.84%
Jan 2024	7.67%	0.81%	8.48%	1.16%	9.64%	1.65%	9.97%	5.56%	6.56%	9.46%	10.75%
2024	7.53%	0.71%	8.25%	0.84%	9.08%	1.58%	8.82%	5.00%	5.94%	9.16%	10.52%
Dec 2023	7.14%	0.84%	7.98%	1.11%	9.09%	1.81%	8.84%	7.41%	5.92%	8.39%	10.41%
Nov 2023	7.03%	0.74%	7.77%	0.77%	8.54%	1.95%	8.34%	5.19%	5.03%	8.27%	10.09%
Oct 2023	6.45%	0.67%	7.12%	0.84%	7.96%	2.19%	7.87%	4.34%	5.63%	8.39%	8.97%
Sep 2023	6.37%	0.72%	7.09%	1.11%	8.21%	2.23%	8.67%	5.01%	5.22%	8.20%	8.97%
Aug 2023	6.88%	0.65%	7.53%	1.12%	8.66%	2.10%	8.56%	4.14%	5.33%	9.94%	9.73%
Jul 2023	5.86%	0.64%	6.51%	0.84%	7.35%	2.45%	7.60%	3.17%	4.47%	7.48%	8.24%
Jun 2023	6.19%	0.64%	6.83%	0.61%	7.44%	2.37%	7.31%	3.42%	4.65%	8.38%	8.49%
May 2023	6.16%	0.61%	6.77%	0.83%	7.59%	1.82%	7.77%	4.04%	4.11%	8.05%	8.67%
Apr 2023	5.83%	0.66%	6.49%	0.87%	7.37%	2.31%	7.68%	3.26%	4.24%	6.93%	8.36%
Mar 2023	5.95%	0.62%	6.57%	0.85%	7.41%	2.63%	7.10%	4.43%	5.13%	7.24%	8.63%
Feb 2023	6.16%	0.56%	6.72%	0.88%	7.59%	2.62%	7.80%	3.62%	5.06%	7.47%	8.50%
Jan 2023	6.98%	0.75%	7.72%	1.42%	9.14%	3.31%	9.46%	4.46%	5.24%	9.05%	10.36%
2023	6.42%	0.68%	7.10%	0.94%	8.03%	2.31%	8.08%	4.39%	5.00%	8.15%	9.13%
Dec 2022	6.72%	0.95%	7.67%	1.68%	9.35%	2.95%	9.37%	4.72%	5.86%	9.23%	10.60%
Nov 2022	6.06%	0.73%	6.79%	1.34%	8.13%	1.54%	8.01%	3.70%	4.19%	7.55%	9.79%
Oct 2022	6.07%	0.67%	6.74%	1.29%	8.03%	1.66%	7.70%	3.99%	3.82%	7.43%	9.78%
Sep 2022	5.68%	0.68%	6.36%	1.19%	7.55%	0.97%	7.33%	3.34%	4.07%	7.31%	9.00%
Aug 2022	5.91%	0.63%	6.54%	1.29%	7.83%	1.69%	7.13%	4.35%	4.51%	7.83%	9.51%
Jul 2022	6.11%	0.60%	6.71%	2.34%	9.05%	1.84%	8.73%	4.93%	5.86%	7.92%	10.68%
Jun 2022	5.85%	0.60%	6.45%	2.19%	8.64%	2.64%	8.44%	5.56%	4.97%	9.43%	9.89%
May 2022	5.38%	0.54%	5.91%	1.64%	7.55%	1.82%	7.31%	5.67%	3.95%	8.11%	8.69%
Apr 2022	5.86%	0.54%	6.40%	3.50%	9.90%	0.52%	10.15%	5.71%	6.38%	10.45%	10.94%
Mar 2022	5.73%	0.52%	6.24%	5.06%	11.30%	0.97%	11.99%	8.47%	7.90%	11.54%	11.93%
Feb 2022	5.77%	0.53%	6.29%	3.66%	9.95%	1.60%	10.75%	7.21%	6.04%	9.80%	10.66%
Jan 2022	5.43%	0.48%	5.91%	6.47%	12.38%	1.24%	12.43%	7.62%	7.19%	12.34%	14.08%
2022	5.88%	0.62%	6.50%	2.63%	9.13%	1.61%	9.10%	5.52%	5.37%	9.08%	10.46%
Dec 2021	5.58%	0.56%	6.14%	3.36%	9.50%	0.82%	9.49%	5.41%	6.12%	10.50%	10.57%
Nov 2021	5.62%	0.76%	6.38%	2.82%	9.20%	1.60%	9.04%	5.61%	5.39%	9.33%	10.62%
Oct 2021	5.73%	0.58%	6.32%	1.91%	8.23%	0.59%	8.01%	4.05%	5.11%	8.15%	9.57%
Sep 2021	5.67%	0.53%	6.20%	1.56%	7.77%	1.14%	7.92%	3.70%	3.78%	7.86%	8.95%
Aug 2021	5.76%	0.55%	6.31%	1.42%	7.73%	0.62%	7.74%	3.11%	4.09%	7.95%	8.92%
Jul 2021	5.57%	0.54%	6.12%	1.18%	7.30%	0.58%	7.04%	1.73%	3.80%	7.89%	8.77%
Jun 2021	5.26%	0.52%	5.79%	1.18%	6.96%	0.51%	7.09%	2.22%	4.12%	7.27%	7.94%
May 2021	4.80%	0.42%	5.21%	1.08%	6.29%	0.20%	6.17%	3.04%	3.97%	6.61%	7.21%
Apr 2021	5.10%	0.43%	5.53%	1.38%	6.92%	0.00%	6.80%	4.13%	4.15%	6.14%	8.12%
Mar 2021	5.00%	0.41%	5.41%	1.65%	7.06%	0.74%	7.40%	4.12%	4.07%	5.82%	8.08%
Feb 2021	5.42%	0.52%	5.93%	4.84%	10.78%	3.85%	11.53%	4.74%	4.40%	8.36%	12.69%
Jan 2021	5.48%	0.36%	5.84%	6.51%	12.35%	4.08%	13.10%	5.33%	6.22%	11.10%	13.96%
2021	5.43%	0.52%	5.94%	2.41%	8.35%	1.23%	8.45%	3.95%	4.61%	8.11%	9.63%

Year / Month	Certified absence	Self-certified absence	Non Covid-19 absence	Covid-19 Absence	Total absence rate	CHO 1	CHO 2	CHO 3	CHO 4	CHO 5	CHO 6	CHO 7	CHO 8	CHO 9	Other Comm	Social Care
Oct 2024	7.62%	0.71%	8.33%	0.68%	9.01%	9.53%	9.31%	9.21%	7.56%	9.90%	7.32%	10.19%	11.80%	7.08%	4.67%	9.01%
Sep 2024	7.82%	0.75%	8.57%	0.88%	9.46%	10.63%	10.38%	8.57%	8.64%	9.91%	7.41%	10.65%	11.19%	7.76%	4.88%	9.46%
Aug 2024	7.81%	0.64%	8.45%	1.03%	9.48%	11.22%	10.14%	9.19%	8.82%	10.72%	6.48%	9.65%	10.99%	7.60%	4.27%	9.48%
Jul 2024	8.20%	0.70%	8.90%	1.21%	10.11%	11.45%	10.75%	9.88%	9.57%	10.63%	6.43%	10.65%	12.92%	7.51%	4.69%	10.11%
Jun 2024	7.40%	0.73%	8.13%	1.14%	9.27%	10.51%	9.17%	9.87%	9.11%	9.79%	6.07%	9.25%	12.24%	6.53%	0.19%	9.27%
May 2024	7.18%	0.71%	7.88%	0.63%	8.51%	10.40%	7.36%	8.62%	8.26%	8.65%	6.09%	8.17%	11.28%	6.59%	2.23%	8.51%
Apr 2024	7.20%	0.74%	7.94%	0.53%	8.47%	10.63%	8.88%	8.71%	7.32%	8.38%	5.63%	9.10%	10.64%	6.50%	1.05%	8.47%
Mar 2024	7.29%	0.65%	7.93%	0.50%	8.43%	11.01%	7.74%	8.80%	7.37%	9.35%	5.84%	8.76%	9.83%	7.20%	3.98%	8.43%
Feb 2024	7.12%	0.68%	7.81%	0.60%	8.41%	11.44%	7.41%	8.32%	7.41%	8.66%	5.86%	9.23%	10.41%	6.89%	4.17%	8.41%
Jan 2024	7.67%	0.81%	8.48%	1.16%	9.64%	12.91%	7.60%	9.98%	8.76%	10.33%	7.29%	10.49%	11.93%	7.08%	5.84%	9.64%
2024	7.53%	0.71%	8.25%	0.84%	9.08%	10.98%	8.88%	9.11%	8.29%	9.63%	6.45%	9.63%	11.34%	7.07%	4.29%	9.08%
Dec 2023	7.14%	0.84%	7.98%	1.11%	9.09%	12.21%	8.32%	9.94%	8.05%	9.15%	6.48%	10.41%	9.89%	7.45%	4.07%	9.09%
Nov 2023	7.03%	0.74%	7.77%	0.77%	8.54%	11.85%	7.35%	9.16%	7.91%	8.35%	6.24%	9.04%	9.78%	6.94%	2.42%	8.54%
Oct 2023	6.45%	0.67%	7.12%	0.84%	7.96%	10.63%	4.28%	9.50%	7.60%	9.13%	5.77%	8.23%	10.07%	6.31%	3.56%	7.96%
Sep 2023	6.37%	0.72%	7.09%	1.11%	8.21%	10.74%	4.75%	10.48%	8.33%	9.34%	5.60%	9.09%	8.94%	6.71%	3.80%	8.21%
Aug 2023	6.88%	0.65%	7.53%	1.12%	8.66%	11.19%	4.57%	10.54%	8.91%	9.29%	7.09%	9.84%	9.88%	7.10%	3.64%	8.66%
Jul 2023	5.86%	0.64%	6.51%	0.84%	7.35%	10.00%	5.08%	9.90%	7.36%	7.51%	5.39%	7.63%	8.27%	4.86%	2.99%	7.35%
Jun 2023	6.19%	0.64%	6.83%	0.61%	7.44%	9.11%	5.26%	9.30%	7.77%	7.20%	5.36%	8.48%	8.41%	6.23%	1.54%	7.44%
May 2023	6.16%	0.61%	6.77%	0.83%	7.59%	9.09%	4.07%	10.00%	7.44%	8.00%	6.09%	8.58%	9.27%	6.55%	2.41%	7.59%
Apr 2023	5.83%	0.66%	6.49%	0.87%	7.37%	10.00%	5.08%	9.91%	7.36%	7.51%	5.45%	7.62%	8.27%	5.03%	1.28%	7.37%
Mar 2023	5.95%	0.62%	6.57%	0.85%	7.41%	10.14%	5.20%	10.39%	5.27%	8.58%	6.24%	7.50%	9.74%	5.83%	2.56%	7.41%
Feb 2023	6.16%	0.56%	6.72%	0.88%	7.59%	10.30%	5.51%	10.02%	6.12%	8.80%	5.42%	7.74%	8.67%	5.64%	1.24%	7.59%
Jan 2023	6.98%	0.75%	7.72%	1.42%	9.14%	12.83%	6.25%	11.80%	8.52%	10.18%	7.74%	8.13%	10.01%	6.45%	3.29%	9.14%
2023	6.42%	0.68%	7.10%	0.94%	8.03%	10.70%	5.45%	10.08%	7.56%	8.60%	6.05%	8.54%	9.29%	6.25%	2.78%	8.03%
Dec 2022	6.72%	0.95%	7.67%	1.68%	9.35%	11.94%	4.67%	12.52%	6.53%	11.79%	8.63%	9.70%	12.50%	8.80%	4.81%	9.35%
Nov 2022	6.06%	0.73%	6.79%	1.34%	8.13%	11.03%	5.07%	10.56%	6.25%	9.03%	7.44%	7.59%	9.96%	7.13%	3.06%	8.13%
Oct 2022	6.07%	0.67%	6.74%	1.29%	8.03%	10.88%	5.59%	9.84%	6.71%	8.96%	6.56%	7.56%	10.38%	5.95%	1.65%	8.03%
Sep 2022	5.68%	0.68%	6.36%	1.19%	7.55%	9.80%	4.65%	8.67%	6.11%	8.29%	7.34%	8.61%	10.70%	5.60%	1.23%	7.55%
Aug 2022	5.91%	0.63%	6.54%	1.29%	7.83%	11.56%	5.66%	8.73%	5.80%	7.93%	6.39%	7.58%	10.45%	6.37%	3.91%	7.83%
Jul 2022	6.11%	0.60%	6.71%	2.34%	9.05%	11.63%	4.89%	10.85%	7.70%	11.24%	6.82%	9.94%	11.63%	7.53%	4.17%	9.05%
Jun 2022	5.85%	0.60%	6.45%	2.19%	8.64%	11.51%	4.77%	10.55%	5.64%	10.91%	7.38%	9.93%	11.23%	8.43%	1.75%	8.64%
May 2022	5.38%	0.54%	5.91%	1.64%	7.55%	9.32%	3.13%	9.59%	6.54%	9.06%	5.65%	7.93%	10.57%	6.91%	1.08%	7.55%
Apr 2022	5.86%	0.54%	6.40%	3.50%	9.90%	9.67%	4.79%	12.25%	6.58%	11.88%	7.30%	11.18%	13.54%	8.26%	2.88%	9.90%
Mar 2022	5.73%	0.52%	6.24%	5.06%	11.30%	13.89%	4.77%	12.81%	8.99%	13.07%	11.29%	11.56%	15.34%	12.17%	2.43%	11.30%
Feb 2022	5.77%	0.53%	6.29%	3.66%	9.95%	11.70%	6.40%	10.88%	9.04%	10.64%	7.85%	11.56%	12.40%	10.04%	0.79%	9.95%
Jan 2022	5.43%	0.48%	5.91%	6.47%	12.38%	14.83%	9.85%	13.96%	10.43%	13.05%	9.78%	14.69%	16.16%	9.32%	2.90%	12.38%
2022	5.88%	0.62%	6.50%	2.63%	9.13%	11.48%	5.33%	10.95%	7.48%	10.50%	7.71%	9.81%	12.09%	8.03%	2.53%	9.13%
Dec 2021	5.58%	0.56%	6.14%	3.36%	9.50%	11.39%	6.22%	10.52%	7.79%	11.59%	8.29%	10.77%	12.52%	8.12%	2.41%	9.50%
Nov 2021	5.62%	0.76%	6.38%	2.82%	9.20%	10.39%	4.96%	11.61%	7.55%	10.38%	9.39%	11.39%	12.49%	7.35%	1.00%	9.20%
Oct 2021	5.73%	0.58%	6.32%	1.91%	8.23%	8.42%	5.82%	11.68%	7.10%	9.20%	6.24%	10.60%	10.40%	6.10%	1.85%	8.23%
Sep 2021	5.67%	0.53%	6.20%	1.56%	7.77%	8.83%	3.93%	10.39%	6.73%	8.83%	6.74%	10.65%	9.63%	6.86%	2.31%	7.77%
Aug 2021	5.76%	0.55%	6.31%	1.42%	7.73%	9.19%	5.38%	9.86%	6.83%	7.92%	6.16%	9.41%	8.81%	7.22%	4.45%	7.73%
Jul 2021	5.57%	0.54%	6.12%	1.18%	7.30%	8.66%	5.72%	9.60%	6.35%	7.77%	5.49%	8.43%	8.76%	6.04%	4.40%	7.30%
Jun 2021	5.26%	0.52%	5.79%	1.18%	6.96%	8.87%	3.77%	8.74%	6.57%	7.57%	6.00%	8.24%	7.72%	6.20%	2.01%	6.96%
May 2021	4.80%	0.42%	5.21%	1.08%	6.29%	7.67%	2.27%	8.15%	6.31%	7.21%	6.38%	6.91%	7.44%	4.70%	1.81%	6.29%
Apr 2021	5.10%	0.43%	5.53%	1.38%	6.92%	8.69%	3.98%	9.15%	7.06%	7.37%	6.17%	6.72%	7.89%	5.46%	1.95%	6.92%
Mar 2021	5.00%	0.41%	5.41%	1.65%	7.06%	8.29%	4.88%	9.70%	6.07%	7.63%	7.18%	7.42%	7.99%	5.63%	0.74%	7.06%
Feb 2021	5.42%	0.52%	5.93%	4.84%	10.78%	11.30%	10.97%	10.62%	11.22%	10.40%	10.94%	9.18%	12.04%	10.11%	0.80%	10.78%
Jan 2021	5.48%	0.36%	5.84%	6.51%	12.35%	15.96%	12.46%	10.98%	8.67%	13.98%	13.17%	12.56%	13.13%	11.43%	3.30%	12.35%
2021	5.43%	0.52%	5.94%	2.41%	8.35%	9.80%	5.75%	10.10%	7.41%	9.19%	7.67%	9.35%	9.91%	7.08%	2.21%	8.35%

Total Absence Rate



Total Absence Rate



% of Absence Non Covid-19 / Covid-19

