

Older People Employment Report : SEP 2024

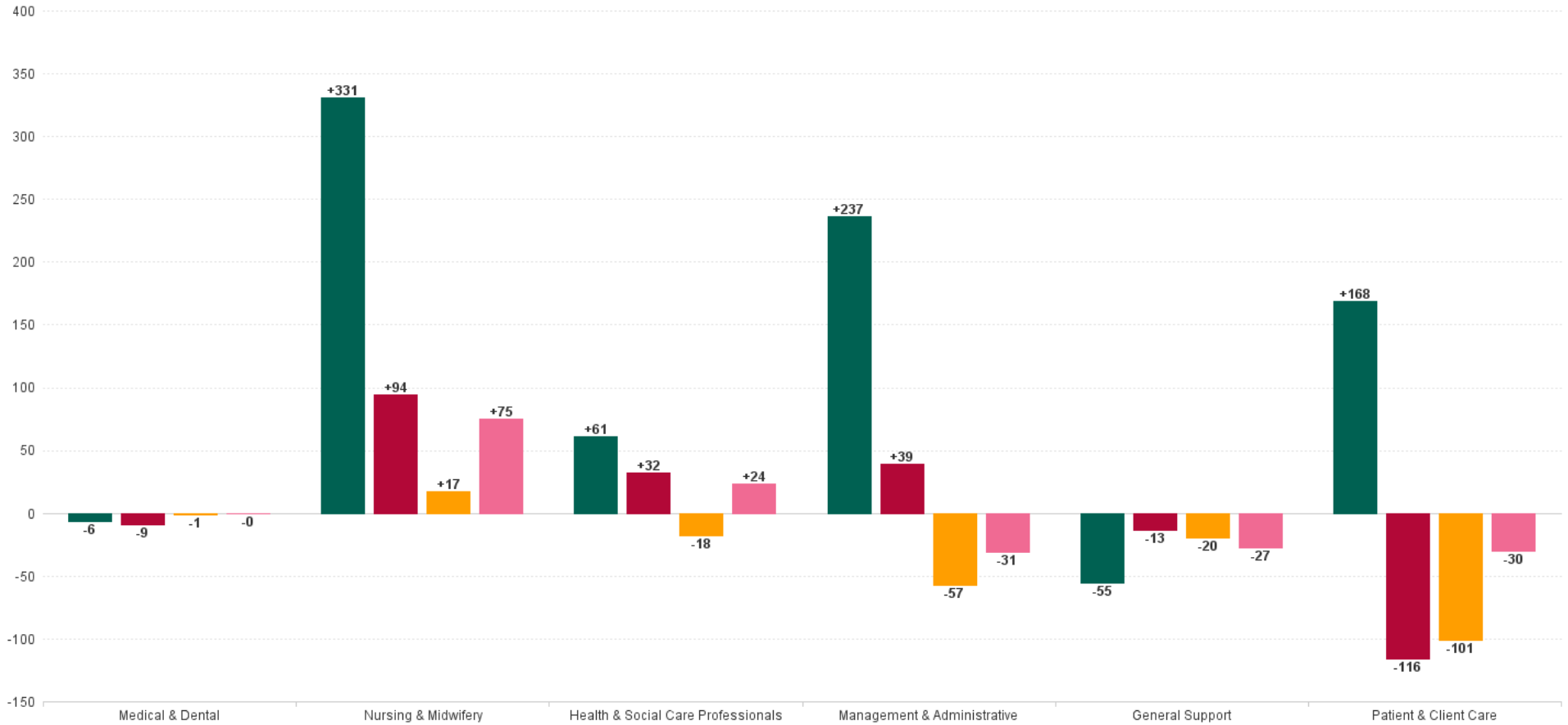
Older People Employment Report by Staff Group

SEP 2024	WTE DEC 2019	WTE DEC 2022	WTE DEC 2023	WTE AUG 2024	WTE SEP 2024	WTE Change 2023	WTE Change 2024	WTE Change AUG 2024	WTE Change Dec 2022 to SEP 2024	WTE Change Dec 2019 to SEP 2024	% WTE Change Dec 2022 to SEP 2024	No. SEP 2024
Overall	13,239	13,947	14,154	14,024	13,975	+207	-179	-49	+27	+736	+0.2%	16,821
Consultants	4	7	5	5	5	-1	-1	-1	-2	+1	-29.3%	8
Registrars	10	10	11	14	15	+1	+4	+0	+5	+5	+52.7%	15
SHO/ Interns	15	12	18	20	21	+6	+3	+1	+9	+6	+73.5%	21
Medical/ Dental, other	95	98	85	77	77	-14	-7	+1	-21	-18	-21.5%	146
Medical & Dental	124	126	118	116	117	-8	-1	+1	-9	-6	-7.3%	190
Nurse/ Midwife Manager	711	738	811	817	813	+73	+2	-4	+76	+103	+10.3%	857
Nurse/ Midwife Specialist & ANMP	26	74	111	111	110	+36	-0	-1	+36	+84	+48.1%	116
Staff Nurse/ Staff Midwife	2,575	2,737	2,700	2,724	2,722	-38	+22	-2	-15	+147	-0.6%	3,074
Public Health Nurse	14	13	11	11	11	-1	-1	-0	-2	-4	-15.9%	12
<i>Nursing/ Midwifery awaiting registration</i>	1	1	7	1	2	+7	-5	+1	+1	+1	+104.1%	2
<i>Post-registration Nurse/ Midwife Student</i>	1									-1	-100.0%	
Nursing/ Midwifery Student	2	1	7	1	2	+7	-5	+1	+1	+0	+104.1%	2
Nursing/ Midwifery other	1	3	3	2	2	-0	-1	-0	-1	+1	-34.7%	2
Nursing & Midwifery	3,329	3,566	3,643	3,666	3,660	+77	+17	-6	+94	+331	+2.6%	4,063
<i>Dietitians</i>	16	25	30	32	32	+5	+2	+0	+7	+16	+27.3%	38
<i>Occupational Therapists</i>	113	125	144	134	141	+19	-3	+7	+16	+28	+12.7%	155
<i>Physiotherapists</i>	123	152	163	151	149	+11	-14	-2	-3	+26	-2.2%	169
<i>Podiatrists & Chiropodists</i>	12	3	5	5	5	+1	+0	-0	+2	-7	+45.6%	7
<i>Speech & Language Therapists</i>	23	34	43	41	43	+9	-0	+1	+9	+20	+26.0%	49
Therapy Professions	288	340	385	364	370	+45	-15	+6	+30	+82	+8.8%	418
Health Science/ Diagnostics	6	5	5	5	5	-0	-0	+0	-0	-1	-1.1%	8
Social Care	3	2	3	3	3	+0	+0	+0	+0	-0	+17.7%	4
Social Workers	98	69	52	51	51	-18	-1	+0	-18	-47	-26.2%	58
Psychologists	2	4	4	4	4	+0	+0	-0	+1	+2	+16.9%	6
Pharmacy	15	20	20	20	20	+0	+0	-0	+0	+5	+1.9%	28
H&SC, Other	1	3	26	23	23	+22	-3	-1	+19	+21	+573.1%	25
Health & Social Care Professionals	414	443	493	469	475	+50	-18	+6	+32	+61	+7.3%	547
Management (VIII & above)	75	116	122	113	114	+6	-9	+0	-3	+39	-2.4%	117
Administrative/ Supervisory (V to VII)	169	263	296	285	285	+33	-11	-0	+22	+116	+8.5%	300
Clerical (III & IV)	570	631	689	657	651	+58	-38	-5	+20	+81	+3.2%	742
Management & Administrative	813	1,010	1,107	1,055	1,050	+96	-57	-5	+39	+237	+3.9%	1,159
Support	797	757	762	740	736	+6	-26	-4	-20	-60	-2.6%	839
Maintenance/ Technical	95	94	94	101	101	+0	+6	-0	+7	+5	+7.0%	104
General Support	892	851	857	841	837	+6	-20	-4	-13	-55	-1.6%	943
Home Help	3,448	3,687	3,638	3,577	3,558	-49	-80	-19	-129	+110	-3.5%	4,995
Health Care Assistants	4,079	4,072	4,089	4,081	4,053	+16	-36	-28	-19	-26	-0.5%	4,660
Care, other	140	192	210	218	225	+18	+15	+6	+33	+84	+16.9%	264
Patient & Client Care	7,667	7,951	7,936	7,876	7,836	-15	-101	-40	-116	+168	-1.5%	9,919



WTE Change by Staff Category

■ WTE change since DEC 2019 ■ WTE change since DEC 2022 ■ WTE change since DEC 2023 ■ WTE change since SEP 2023



Older People Report by CHO: SEP 2024

SEP 2024	WTE DEC 2019	WTE DEC 2022	WTE DEC 2023	WTE AUG 2024	WTE SEP 2024	WTE Change 2023	WTE Change 2024	WTE Change AUG 2024	WTE Change Dec 2022 to SEP 2024	WTE Change Dec 2019 to SEP 2024	% WTE Change Dec 2022 to SEP 2024	No. SEP 2024
Overall	13,239	13,947	14,154	14,024	13,975	+207	-179	-49	+27	+736	0.20%	16,821
CHO 1	1,836	2,087	2,202	2,213	2,226	+114	+24	+13	+138	+390	6.62%	2,619
CHO 2	1,606	1,582	1,596	1,489	1,484	+14	-112	-5	-98	-122	-6.22%	1,792
CHO 3	974	1,264	1,320	1,346	1,343	+56	+23	-4	+79	+368	6.21%	1,616
CHO 4	2,919	3,000	2,752	2,791	2,769	-248	+17	-22	-231	-150	-7.71%	3,613
CHO 5	1,653	1,641	1,733	1,675	1,653	+92	-81	-22	+12	-0	0.71%	2,000
CHO 6	823	813	858	834	841	+46	-17	+8	+29	+18	3.52%	914
CHO 7	996	999	1,025	1,061	1,048	+26	+23	-13	+49	+52	4.92%	1,175
CHO 8	1,488	1,489	1,540	1,495	1,502	+50	-38	+7	+13	+14	0.85%	1,858
CHO 9	870	976	1,001	999	988	+25	-13	-11	+12	+118	1.21%	1,103
other Community Services	74	95	128	122	122	+32	-6	+0	+27	+47	27.99%	131



% Total by CHO



Older People Employment Report by HSE/S38: SEP 2024

SEP 2024	WTE DEC 2019	WTE DEC 2022	WTE DEC 2023	WTE AUG 2024	WTE SEP 2024	WTE Change 2023	WTE Change 2024	WTE Change AUG 2024	WTE Change Dec 2022 to SEP 2024	WTE Change Dec 2019 to SEP 2024	% WTE Change Dec 2022 to SEP 2024	No. SEP 2024
Overall	13,239	13,947	14,154	14,024	13,975	+207	-179	-49	+27	+736	0.20%	16,821
Health Service Executive	12,531	13,217	13,389	13,113	13,066	+172	-323	-47	-151	+535	-1.14%	15,795
Section 38 Voluntary Agencies	708	731	765	911	909	+35	+143	-3	+178	+201	24.36%	1,026



Older People Employment Report by HSE: SEP 2024

SEP 2024	WTE DEC 2019	WTE DEC 2022	WTE DEC 2023	WTE AUG 2024	WTE SEP 2024	WTE Change 2023	WTE Change 2024	WTE Change AUG 2024	WTE Change Dec 2022 to SEP 2024	WTE Change Dec 2019 to SEP 2024	% WTE Change Dec 2022 to SEP 2024	No. SEP 2024
Total HSE	12,531	13,217	+13,389	13,113	13,066	+172	-323	-47	-151	+535	-1.14%	15,795
Consultants	3	5	+4	3	3	-1	-1	-1	-2	-0	-47.83%	5
Registrars	7	7	+7	10	12	+0	+5	+1	+5	+5	77.08%	12
SHO/ Interns	10	8	+12	14	14	+4	+2	-0	+6	+4	72.69%	14
Medical/ Dental, other	93	97	+83	75	76	-15	-7	+1	-22	-18	-22.26%	144
Medical & Dental	113	117	+105	103	104	-12	-1	+1	-13	-9	-11.33%	175
Nurse/ Midwife Manager	657	687	+754	743	739	+67	-15	-5	+51	+82	7.43%	778
Nurse/ Midwife Specialist & AN/MP	26	74	+110	110	109	+35	-0	-1	+35	+83	46.73%	115
Staff Nurse/ Staff Midwife	2,399	2,566	+2,529	2,491	2,489	-37	-40	-2	-77	+90	-2.99%	2,811
Public Health Nurse	14	13	+11	11	11	-1	-1	-0	-2	-4	-15.88%	12
Nursing/ Midwifery awaiting registration	1	1	+7	1	2	+7	-5	+1	+1	+1	104.08%	2
Post-registration Nurse/ Midwife Student	1									-1	-100.00%	
Nursing/ Midwifery Student	2	1	+7	1	2	+7	-5	+1	+1	+0	104.08%	2
Nursing/ Midwifery other	1	3	+3	2	2	-0	-1	-0	-1	+1	-34.67%	2
Nursing & Midwifery	3,100	3,344	+3,414	3,358	3,351	+70	-63	-7	+7	+252	0.22%	3,720
Dietitians	14	23	+26	27	27	+4	+0	-1	+4	+13	17.29%	32
Occupational Therapists	93	99	+119	107	110	+20	-9	+3	+11	+17	10.84%	122
Physiotherapists	93	113	+121	121	119	+8	-3	-3	+5	+25	4.71%	135
Podiatrists & Chiropodists	11	3	+5	5	5	+1	+0	-0	+2	-7	48.45%	6
Speech & Language Therapists	19	29	+38	37	36	+9	-3	-1	+6	+17	21.43%	41
Therapy Professions	230	267	+309	297	295	+42	-14	-1	+28	+65	10.41%	336
Health Science/ Diagnostics	5	4	+4	4	4	-0	-0	+0	-0	-2	-4.03%	6
Social Care	3	2	+3	3	3	+0	+0	+0	+0	-0	17.70%	4
Social Workers	84	54	+37	36	36	-17	-1	-1	-18	-49	-33.96%	39
Psychologists	2	4	+3	4	4	-0	+0	-0	+0	+2	2.57%	5
Pharmacy	11	14	+14	14	15	+1	+0	+1	+1	+4	5.50%	21
H&SC, Other	1	3	+26	23	23	+22	-3	-1	+19	+21	573.08%	25
Health & Social Care Professionals	336	348	+396	380	378	+48	-18	-2	+30	+42	8.64%	436
Management (VIII & above)	73	112	+118	108	109	+6	-10	+0	-4	+36	-3.33%	112
Administrative/ Supervisory (V to VII)	149	239	+266	260	260	+27	-6	-0	+21	+111	8.67%	274
Clerical (III & IV)	543	601	+661	629	624	+60	-37	-5	+23	+81	3.83%	706
Management & Administrative	765	952	+1,045	998	992	+93	-53	-5	+40	+228	4.20%	1,092
Support	694	645	+652	626	625	+7	-26	-0	-19	-69	-3.00%	713
Maintenance/ Technical	85	85	+84	90	90	-0	+5	-0	+5	+4	5.87%	93
General Support	780	729	+736	716	715	+7	-21	-0	-14	-65	-1.97%	806
Home Help	3,448	3,687	+3,638	3,577	3,558	-49	-80	-19	-129	+110	-3.50%	4,995
Health Care Assistants	3,856	3,851	+3,849	3,768	3,748	-2	-101	-20	-103	-108	-2.68%	4,314
Care, other	135	188	+207	214	220	+18	+14	+6	+32	+85	17.04%	257
Patient & Client Care	7,438	7,726	+7,693	7,558	7,526	-33	-168	-33	-200	+87	-2.59%	9,566



Older People Employment Report by S38 Voluntary Agencies: SEP 2024

SEP 2024	WTE DEC 2019	WTE DEC 2022	WTE DEC 2023	WTE AUG 2024	WTE SEP 2024	WTE Change 2023	WTE Change 2024	WTE Change AUG 2024	WTE Change Dec 2022 to SEP 2024	WTE Change Dec 2019 to SEP 2024	% WTE Change Dec 2022 to SEP 2024	No. SEP 2024
Total S38 Voluntary Agencies	708	731	765	911	909	+35	+143	-3	+178	+201	+24.4%	1,026
Consultants	1	2	2	2	2	+0	+1	+0	+1	+1	+33.3%	3
Registrars	3	3	4	4	3	+1	-1	-1	+0	+0	+0.0%	3
SHO/ Interns	5	4	6	6	7	+2	+1	+1	+3	+2	+75.0%	7
Medical/ Dental, other	2	1	2	2	2	+1	-0	+0	+1	-0	+53.0%	2
Medical & Dental	11	10	14	14	14	+4	+0	+0	+4	+3	+42.4%	15
Nurse/ Midwife Manager	54	50	57	74	75	+7	+18	+1	+25	+21	+49.5%	79
Nurse/ Midwife Specialist & AN/MP			1	1	1	+1	+0	+0	+1	+1	-100.0%	1
Staff Nurse/ Staff Midwife	176	172	171	232	233	-1	+62	+0	+61	+57	+35.7%	263
Nursing & Midwifery	230	222	229	308	309	+7	+80	+1	+87	+79	+39.2%	343
Dietitians	3	3	4	5	6	+1	+2	+1	+3	+3	+111.5%	6
Occupational Therapists	20	26	25	27	31	-2	+7	+4	+5	+11	+19.9%	33
Physiotherapists	30	39	42	30	31	+3	-12	+1	-9	+1	-22.1%	34
Podiatrists & Chiropodists	1	0	0	0	0	+0	+0	+0	+0	-0	+0.0%	1
Speech & Language Therapists	4	4	4	4	7	+0	+3	+3	+3	+3	+56.1%	8
Therapy Professions	58	73	75	67	75	+3	-1	+8	+2	+17	+2.8%	82
Health Science/ Diagnostics	1	1	1	1	1	+0	+0	+0	+0	+0	+10.0%	2
Social Workers	14	15	15	15	16	-0	+1	+1	+0	+2	+0.7%	19
Psychologists	1		1	1	1	+1	+0	+0	+1	+0	-100.0%	1
Pharmacy	5	6	5	6	5	-0	-0	-1	-0	+1	-6.8%	7
Health & Social Care Professionals	78	95	97	89	97	+3	-0	+8	+2	+19	+2.5%	111
Management (VIII & above)	2	4	4	5	5	+0	+1	+0	+1	+3	+25.0%	5
Administrative/ Supervisory (V to VII)	19	24	30	25	25	+6	-5	+0	+1	+6	+6.3%	26
Clerical (III & IV)	27	31	28	27	27	-2	-1	+0	-3	+0	-10.0%	36
Management & Administrative	49	58	62	57	57	+4	-5	+0	-1	+9	-1.0%	67
Support	103	112	111	115	111	-1	+1	-3	-1	+8	-0.6%	126
Maintenance/ Technical	10	9	10	11	11	+1	+1	+0	+2	+1	+16.9%	11
General Support	113	121	121	126	122	-1	+2	-3	+1	+9	+0.8%	137
Health Care Assistants	223	222	240	313	306	+18	+66	-8	+84	+82	+37.8%	346
Care, other	5	4	4	5	4	-0	+1	-0	+0	-1	+11.2%	7
Patient & Client Care	229	226	243	318	310	+18	+67	-8	+84	+81	+37.4%	353



Older People Employment Report by Grade Group: SEP 2024

CHO 1

SEP 2024	WTE DEC 2019	WTE DEC 2022	WTE DEC 2023	WTE AUG 2024	WTE SEP 2024	WTE Change 2023	WTE Change 2024	WTE Change AUG 2024	WTE Change Dec 2022 to SEP 2024	WTE Change Dec 2019 to SEP 2024	% WTE Change Dec 2022 to SEP 2024	No. SEP 2024
Overall	1836	2087	2202	2213	2226	+114	+24	+13	+138	+390	+6.6%	2,619
Registrars				1	1		+1	+0	+1	+1	-100.0%	1
Medical/ Dental, other	30	27	20	14	14	-7	-6	+1	-12	-16	-46.6%	37
Medical & Dental	30	27	20	15	15	-7	-5	+1	-11	-15	-42.9%	38
Nurse/ Midwife Manager	91	91	93	95	96	+2	+3	+1	+5	+5	+5.3%	99
Nurse/ Midwife Specialist & AN/MP	7	18	23	23	23	+4	-0	-0	+4	+16	+23.3%	23
Staff Nurse/ Staff Midwife	307	338	342	335	340	+4	-2	+6	+2	+33	+0.6%	382
Public Health Nurse		1	1	1	1	+0	+0	+0	+0	+1	+40.8%	1
Nursing/ Midwifery other		1	1	1	1	+0	+0	+0	+0	+1	+0.0%	1
Nursing & Midwifery	405	449	459	454	460	+10	+1	+6	+11	+55	+2.5%	506
<i>Dietitians</i>		1	3	2	3	+2	-0	+0	+2	+2	+169.7%	3
<i>Occupational Therapists</i>	10	20	25	21	23	+5	-2	+1	+2	+2	+11.2%	25
<i>Physiotherapists</i>	1	5	8	9	8	+3	-0	-0	+3	+3	+51.4%	9
<i>Speech & Language Therapists</i>			1	1	1	+1	+0	+0	+1	+1	-100.0%	1
Therapy Professions	11	27	37	33	34	+10	-3	+1	+7	+23	+27.1%	38
Health Science/ Diagnostics	1									-1	-100.0%	
Social Workers	18	9	12	11	10	+3	-2	-1	+1	-8	+8.8%	12
Psychologists				1	1		+1	+0	+1	+1	-100.0%	1
H&SC, Other			6	6	6	+6	-0	-0	+6	+6	-100.0%	6
Health & Social Care Professionals	30	36	55	50	50	+19	-5	+0	+14	+20	+39.7%	57
Management (VIII & above)	8	10	9	10	10	-1	+1	-0	-0	+2	-0.9%	10
Administrative/ Supervisory (V to VII)	14	25	34	33	33	+9	-1	-0	+8	+19	+31.9%	34
Clerical (III & IV)	85	86	88	78	77	+2	-11	-1	-8	-8	-9.8%	92
Management & Administrative	107	121	131	121	120	+10	-11	-1	-1	+13	-0.5%	136
Support	123	111	122	112	116	+12	-6	+4	+6	-6	+5.0%	137
Maintenance/ Technical	7	8	6	7	7	-2	+1	+0	-1	-0	-11.3%	7
General Support	130	118	129	119	123	+10	-5	+4	+5	-7	+3.9%	144
Home Help	543	748	824	873	869	+76	+45	-4	+120	+326	+16.1%	1,056
Health Care Assistants	563	564	557	551	557	-7	-0	+6	-7	-7	-1.3%	647
Care, other	28	24	27	30	31	+3	+4	+1	+7	+3	+28.0%	35
Patient & Client Care	1,134	1,336	1,408	1,454	1,456	+71	+49	+3	+120	+322	+9.0%	1,738



Older People Employment Report by Grade Group: SEP 2024

CHO 2

SEP 2024	WTE DEC 2019	WTE DEC 2022	WTE DEC 2023	WTE AUG 2024	WTE SEP 2024	WTE Change 2023	WTE Change 2024	WTE Change AUG 2024	WTE Change Dec 2022 to SEP 2024	WTE Change Dec 2019 to SEP 2024	% WTE Change Dec 2022 to SEP 2024	No. SEP 2024
Overall	1606	1582	1596	1489	1484	+14	-112	-5	-98	-122	-6.2%	1,792
Medical/ Dental, other	11	10	7	6	6	-3	-0	-0	-4	-5	-35.8%	11
Medical & Dental	11	10	7	6	6	-3	-0	-0	-4	-5	-35.8%	11
Nurse/ Midwife Manager	58	74	73	75	74	-0	+1	-1	+1	+16	+0.8%	81
Nurse/ Midwife Specialist & AN/MP	2	7	12	11	11	+5	-1	-0	+4	+9	+55.6%	11
Staff Nurse/ Staff Midwife	301	305	317	309	309	+12	-8	-0	+4	+8	+1.4%	351
Public Health Nurse	1	1	1	1	1	+0	-0	-0	-0	+0	-2.0%	1
Nursing & Midwifery	362	386	403	396	395	+17	-8	-1	+9	+33	+2.2%	444
Dietitians	1	1	2	2	2	+1	+0	+0	+1	+1	+100.0%	2
Occupational Therapists	10	10	16	16	16	+6	-0	-1	+6	+6	+59.6%	17
Physiotherapists	14	15	18	19	18	+3	+0	-1	+3	+3	+20.1%	20
Speech & Language Therapists	2	2	4	3	4	+2	+0	+1	+2	+2	+80.0%	4
Therapy Professions	26	28	39	39	39	+11	+1	+0	+11	+14	+40.9%	43
Health Science/ Diagnostics	1	1	1	1	1	+0	-0	+0	-0	+0	-13.7%	1
Social Workers	10	13	4	4	4	-9	-0	-0	-9	-6	-69.8%	4
Pharmacy	1	1	1	1	1	-0	+0	+0	-0	-0	-1.9%	1
H&SC, Other			4	3	3	+4	-1	-0	+3	+3	-100.0%	3
Health & Social Care Professionals	37	42	48	47	48	+6	-0	+0	+5	+10	+12.3%	52
Management (VIII & above)	2	6	6	6	6	+0	-0	+0	-0	+4	-1.3%	6
Administrative/ Supervisory (V to VII)	8	16	18	17	17	+2	-1	+0	+2	+10	+9.6%	18
Clerical (III & IV)	72	64	68	67	66	+4	-2	-1	+2	-6	+3.0%	74
Management & Administrative	81	86	92	90	89	+6	-3	-1	+3	+8	+3.9%	98
Support	56	51	51	46	45	+0	-5	-0	-5	-11	-10.3%	51
Maintenance/ Technical	19	20	21	21	21	+1	-0	+0	+1	+2	+4.9%	22
General Support	75	71	72	66	67	+1	-6	+0	-4	-8	-5.9%	73
Home Help	499	407	376	303	304	-31	-72	+0	-104	-196	-25.4%	469
Health Care Assistants	515	536	556	535	530	+20	-26	-6	-6	+15	-1.1%	595
Care, other	24	45	43	44	47	-2	+3	+3	+2	+22	+3.6%	50
Patient & Client Care	1,039	988	975	882	880	-13	-95	-3	-108	-159	-10.9%	1,114



Older People Employment Report by Grade Group: SEP 2024

CHO 3

SEP 2024	WTE DEC 2019	WTE DEC 2022	WTE DEC 2023	WTE AUG 2024	WTE SEP 2024	WTE Change 2023	WTE Change 2024	WTE Change AUG 2024	WTE Change Dec 2022 to SEP 2024	WTE Change Dec 2019 to SEP 2024	% WTE Change Dec 2022 to SEP 2024	No. SEP 2024
Overall	974	1264	1320	1346	1343	+56	+23	-4	+79	+368	+6.2%	1,616
Consultants	1	3	2	1	1	-1	-1	-1	-2	-0	-80.7%	2
Registrars		2	2	4	4	+0	+2	-0	+2	+4	+101.0%	4
SHO/ Interns		2	3	3	3	+1	+0	+0	+1	+3	+51.5%	3
Medical/ Dental, other	5	6	5	5	5	-1	-0	-0	-1	-0	-18.5%	5
Medical & Dental	6	13	12	13	12	-1	+1	-1	-0	+6	-3.8%	14
Nurse/ Midwife Manager	64	68	74	71	71	+5	-2	+1	+3	+8	+4.4%	74
Nurse/ Midwife Specialist & ANMP	2	11	13	13	14	+2	+2	+1	+4	+13	+36.1%	15
Staff Nurse/ Staff Midwife	239	266	276	282	279	+10	+3	-3	+13	+40	+4.8%	314
Public Health Nurse	1									-1	-100.0%	
Nursing & Midwifery	305	345	363	366	365	+17	+2	-2	+20	+60	+5.7%	403
<i>Dietitians</i>		2	2	2	3	-0	+1	+0	+1	+1	+36.4%	3
<i>Occupational Therapists</i>	12	13	21	16	16	+7	-4	+1	+3	+3	+23.5%	18
<i>Physiotherapists</i>	10	21	17	17	16	-3	-1	-0	-4	-4	-21.2%	19
<i>Podiatrists & Chiropodists</i>	3	2	3	4	4	+1	+1	+0	+2	+2	+118.8%	4
<i>Speech & Language Therapists</i>	2	6	7	7	6	+1	-2	-1	-1	-1	-13.4%	6
Therapy Professions	28	44	49	45	44	+5	-5	-1	+1	+17	+1.4%	50
Health Science/ Diagnostics	1	1	1	1	1	+0	+0	+0	+0	-0	+1.4%	2
Social Workers	7	2	2	2	2	+0	+0	+0	+0	-5	+1.0%	2
Psychologists		1	1	1	1	-0	+0	-0	-0	+1	-1.2%	1
Pharmacy	1	1	1	1	1	+0	+0	+0	+0	+0	+1.0%	1
Health & Social Care Professionals	36	48	54	50	49	+5	-5	-1	+1	+13	+1.3%	56
Management (VIII & above)	6	10	9	10	9	-1	+0	-0	-0	+4	-4.0%	10
Administrative/ Supervisory (V to VII)	21	27	28	26	24	+2	-4	-1	-2	+4	-8.5%	26
Clerical (III & IV)	50	63	68	63	64	+5	-4	+1	+1	+15	+2.2%	73
Management & Administrative	76	99	105	99	98	+6	-7	-1	-1	+22	-1.3%	109
Support	64	46	51	59	57	+6	+6	-2	+12	-7	+25.9%	68
Maintenance/ Technical	22	23	22	27	26	-0	+4	-1	+4	+4	+15.5%	27
General Support	86	68	74	86	84	+6	+10	-2	+15	-3	+22.4%	95
Home Help	175	342	364	359	361	+22	-3	+2	+19	+186	+5.5%	513
Health Care Assistants	279	331	324	350	350	-7	+26	-0	+19	+71	+5.8%	398
Care, other	10	17	25	24	24	+8	-1	+0	+7	+14	+39.7%	28
Patient & Client Care	464	690	712	733	735	+22	+22	+2	+45	+270	+6.5%	939



Older People Employment Report by Grade Group: SEP 2024

CHO 4

SEP 2024	WTE DEC 2019	WTE DEC 2022	WTE DEC 2023	WTE AUG 2024	WTE SEP 2024	WTE Change 2023	WTE Change 2024	WTE Change AUG 2024	WTE Change Dec 2022 to SEP 2024	WTE Change Dec 2019 to SEP 2024	% WTE Change Dec 2022 to SEP 2024	No. SEP 2024
Overall	2919	3000	2752	2791	2769	-248	+17	-22	-231	-150	-7.7%	3,613
Consultants	1	1	1	1	1	+0	+0	+0	+0	+0	+0.0%	2
Registrars	3	0				-0			-0	-3	-100.0%	
SHO/ Interns	1			1	1		+1	+0	+1	+0	-100.0%	1
Medical/ Dental, other	21	27	25	26	26	-2	+2	+0	-0	+6	-1.2%	55
Medical & Dental	26	28	26	28	28	-2	+3	+0	+1	+3	+2.3%	58
Nurse/ Midwife Manager	118	109	119	128	124	+10	+5	-4	+15	+6	+13.5%	134
Nurse/ Midwife Specialist & ANMP	3	6	11	10	10	+6	-1	-0	+4	+7	+74.0%	11
Staff Nurse/ Staff Midwife	515	575	513	540	541	-62	+27	+0	-35	+25	-6.0%	651
Public Health Nurse	5	6	5	4	4	-2	-0	+0	-2	-1	-33.0%	5
<i>Nursing/ Midwifery awaiting registration</i>	1		5		1	+5	-4	+1	+1	+1	-100.0%	1
<i>Post-registration Nurse/ Midwife Student</i>	1										-100.0%	
Nursing/ Midwifery Student	2		5		1	+5	-4	+1	+1	-1	-100.0%	1
Nursing & Midwifery	643	697	653	683	680	-44	+27	-3	-17	+37	-2.4%	802
<i>Dietitians</i>	2		2	2	2	+2	+1	+0	+2	+2	-100.0%	2
<i>Occupational Therapists</i>	17	13	10	11	12	-3	+2	+0	-1	-1	-8.0%	13
<i>Physiotherapists</i>	15	16	13	10	9	-3	-3	-1	-6	-6	-41.3%	11
<i>Podiatrists & Chiropodists</i>	6	2	1	1	1	-0	-1	+0	-1	-1	-36.2%	1
<i>Speech & Language Therapists</i>	4	6	4	4	3	-2	-1	-0	-3	-3	-46.5%	4
Therapy Professions	44	37	30	28	27	-7	-2	-0	-9	-17	-24.8%	31
Health Science/ Diagnostics	1	1	1	1	1	+0	+0	+0	+0	+0	+0.0%	2
Social Care	2	1	1	1	1	+0	+0	+0	+0	-0	+0.8%	2
Social Workers	10	9				-9			-9	-10	-100.0%	
Pharmacy	3	5	4	4	4	-0	-0	+0	-0	+2	-7.3%	9
H&SC, Other			5	5	4	+5	-1	-1	+4	+4	-100.0%	5
Health & Social Care Professionals	60	53	41	39	38	-12	-3	-1	-15	-22	-27.7%	49
Management (VIII & above)	13	19	20	17	16	+1	-3	-1	-3	+4	-14.4%	17
Administrative/ Supervisory (V to VII)	17	29	39	47	47	+9	+8	-0	+17	+30	+58.4%	49
Clerical (III & IV)	128	130	128	129	127	-2	-1	-1	-3	-1	-1.9%	150
Management & Administrative	158	178	186	193	190	+8	+4	-3	+12	+32	+6.6%	216
Support	101	124	120	115	116	-3	-5	+0	-8	+15	-6.6%	130
Maintenance/ Technical	6	5	3	3	3	-2	+0	+0	-2	-3	-40.0%	3
General Support	107	129	123	118	119	-5	-5	+0	-10	+12	-7.9%	133
Home Help	1,113	1,068	932	917	909	-136	-23	-8	-159	-205	-14.9%	1,412
Health Care Assistants	781	814	753	776	768	-61	+14	-8	-47	-14	-5.8%	895
Care, other	31	34	37	37	37	+3	+1	-0	+4	+7	+10.6%	48
Patient & Client Care	1,925	1,916	1,722	1,730	1,714	-194	-9	-16	-202	-212	-10.5%	2,355



Older People Employment Report by Grade Group: SEP 2024

CHO 5

SEP 2024	WTE DEC 2019	WTE DEC 2022	WTE DEC 2023	WTE AUG 2024	WTE SEP 2024	WTE Change 2023	WTE Change 2024	WTE Change AUG 2024	WTE Change Dec 2022 to SEP 2024	WTE Change Dec 2019 to SEP 2024	% WTE Change Dec 2022 to SEP 2024	No. SEP 2024
Overall	1653	1641	1733	1675	1653	+92	-81	-22	+12	-0	+0.7%	2,000
Medical/ Dental, other	9	15	13	12	12	-1	-1	-0	-3	+3	-18.5%	16
Medical & Dental	9	15	13	12	12	-1	-1	-0	-3	+3	-18.5%	16
Nurse/ Midwife Manager	83	76	99	93	91	+23	-8	-3	+14	+7	+18.6%	97
Nurse/ Midwife Specialist & AN/MP	2	12	18	17	16	+6	-2	-1	+4	+14	+36.0%	17
Staff Nurse/ Staff Midwife	313	299	318	312	308	+19	-10	-4	+10	-5	+3.2%	355
Public Health Nurse	5	1	1	1	1	+0	+0	+0	+0	-4	+1.0%	1
<i>Nursing/ Midwifery awaiting registration</i>			2			+2	-2				-100.0%	
Nursing/ Midwifery Student			2			+2	-2				-100.0%	
Nursing & Midwifery	403	388	437	423	415	+50	-22	-8	+28	+12	+7.2%	470
<i>Dietitians</i>	4	4	4	4	4	+0	+0	+0	+0	+0	+1.4%	5
<i>Occupational Therapists</i>	13	11	15	15	16	+5	+1	+1	+5	+5	+47.2%	18
<i>Physiotherapists</i>	21	14	15	17	17	+1	+1	+0	+2	+2	+16.7%	21
<i>Podiatrists & Chiropodists</i>	0										-100.0%	
<i>Speech & Language Therapists</i>	3	1	4	3	3	+2	-0	+0	+2	+2	+175.0%	4
Therapy Professions	41	31	39	39	41	+8	+2	+1	+10	-0	+31.6%	48
Social Workers	3	4	5	5	5	+1	-0	-1	+1	+1	+19.9%	5
Psychologists		1	2	2	1	+0	-0	-0	-0	+1	-8.5%	2
Pharmacy		1	1	1	1	-0	-0	-0	-0	+1	-15.8%	1
H&SC, Other		2	6	3	4	+4	-2	+1	+2	+4	+107.7%	4
Health & Social Care Professionals	44	39	52	50	51	+13	-1	+1	+12	+7	+31.4%	60
Management (VIII & above)	4	11	11	12	12	+0	+1	+0	+1	+8	+9.8%	12
Administrative/ Supervisory (V to VII)	17	16	16	18	17	-0	+1	-0	+1	+1	+7.5%	18
Clerical (III & IV)	31	60	61	55	54	+0	-7	-1	-7	+22	-10.9%	60
Management & Administrative	52	87	88	84	83	+0	-5	-1	-4	+32	-4.9%	90
Support	91	75	62	55	53	-13	-9	-2	-22	-38	-28.8%	67
Maintenance/ Technical	5	4	4	4	4	-0	+0	+0	-0	-1	-4.1%	5
General Support	96	79	66	59	57	-13	-9	-2	-22	-39	-27.5%	72
Home Help	614	612	609	599	592	-3	-17	-7	-20	-22	-3.2%	787
Health Care Assistants	427	404	441	422	417	+37	-24	-4	+13	-10	+3.2%	478
Care, other	9	18	28	25	25	+10	-3	-0	+7	+16	+39.3%	27
Patient & Client Care	1,049	1,034	1,078	1,046	1,034	+44	-44	-12	+0	-15	+0.0%	1,292



Older People Employment Report by Grade Group: SEP 2024

CHO 6

SEP 2024	WTE DEC 2019	WTE DEC 2022	WTE DEC 2023	WTE AUG 2024	WTE SEP 2024	WTE Change 2023	WTE Change 2024	WTE Change AUG 2024	WTE Change Dec 2022 to SEP 2024	WTE Change Dec 2019 to SEP 2024	% WTE Change Dec 2022 to SEP 2024	No. SEP 2024
Overall	823	813	858	834	841	+46	-17	+8	+29	+18	+3.5%	914
Consultants				1	1		+1	+0	+1	+1	-100.0%	1
Registrars	1	1	1	1	1	+0	+0	+0	+0	+0	+0.0%	1
Medical/ Dental, other	4	2	3	2	2	+1	-1	+0	-0	-2	-6.9%	3
Medical & Dental	5	3	4	4	4	+1	+0	+0	+1	-1	+30.1%	5
Nurse/ Midwife Manager	68	64	76	73	73	+12	-3	+1	+10	+5	+15.2%	75
Nurse/ Midwife Specialist & AN/MP	1		9	9	9	+9	-0	+0	+9	+8	-100.0%	9
Staff Nurse/ Staff Midwife	204	206	205	206	207	-0	+2	+1	+1	+3	+0.7%	214
Nursing & Midwifery	273	269	290	287	289	+21	-1	+2	+20	+16	+7.4%	298
Dietitians	3	2	3	4	3	+0	+1	-0	+1	+1	+35.5%	5
Occupational Therapists	19	17	19	20	20	+2	+1	+0	+3	+3	+20.2%	22
Physiotherapists	21	19	26	23	22	+7	-4	-1	+3	+3	+16.6%	23
Podiatrists & Chiropodists	1	0	0	0	0	+0	+0	+0	+0	+0	+0.0%	1
Speech & Language Therapists	6	4	6	5	5	+2	-1	+0	+1	+1	+22.3%	6
Therapy Professions	50	42	54	52	51	+11	-3	-1	+8	+1	+19.6%	57
Social Workers	11	7	6	7	7	-1	+1	+0	-0	-5	-2.8%	8
Psychologists	2		1	1	1	+1	+0	+0	+1	-2	-100.0%	1
Pharmacy	3	4	4	5	5	+0	+0	+0	+1	+2	+14.6%	5
H&SC, Other			1	1	1	+1	+0	+0	+1	+1	-100.0%	1
Health & Social Care Professionals	66	53	65	65	64	+12	-2	-1	+10	-3	+19.2%	72
Management (VIII & above)	4	8	12	12	12	+4	+0	+0	+4	+8	+55.5%	13
Administrative/ Supervisory (V to VII)	22	32	39	33	33	+7	-6	-1	+1	+11	+4.0%	35
Clerical (III & IV)	30	33	31	28	29	-2	-2	+1	-4	-0	-11.7%	33
Management & Administrative	56	72	82	74	74	+9	-7	+1	+2	+18	+2.4%	81
Support	108	102	109	104	106	+7	-3	+2	+4	-2	+3.8%	113
Maintenance/ Technical	8	7	8	9	9	+1	+1	+0	+2	+1	+21.5%	9
General Support	116	110	117	113	115	+8	-2	+2	+5	-1	+5.0%	122
Health Care Assistants	300	299	296	286	291	-4	-5	+5	-8	-9	-2.8%	329
Care, other	7	6	5	5	5	-1	+0	+0	-1	-3	-22.5%	7
Patient & Client Care	307	305	300	291	295	-5	-5	+5	-10	-12	-3.2%	336



Older People Employment Report by Grade Group: SEP 2024

CHO 7

SEP 2024	WTE DEC 2019	WTE DEC 2022	WTE DEC 2023	WTE AUG 2024	WTE SEP 2024	WTE Change 2023	WTE Change 2024	WTE Change AUG 2024	WTE Change Dec 2022 to SEP 2024	WTE Change Dec 2019 to SEP 2024	% WTE Change Dec 2022 to SEP 2024	No. SEP 2024
Overall	996	999	1025	1061	1048	+26	+23	-13	+49	+52	+4.9%	1,175
SHO/ Interns	2	2	2	2	2	+0	+0	+0	+0	+0	+1.0%	2
Medical/ Dental, other	4	2	1	1	1	-1	+0	+0	-1	-3	-32.0%	2
Medical & Dental	6	4	3	3	3	-1	+0	+0	-1	-3	-15.7%	4
Nurse/ Midwife Manager	77	88	101	107	109	+13	+8	+2	+21	+32	+23.4%	112
Nurse/ Midwife Specialist & AN/MP	3	6	7	7	6	+1	-1	-1	+0	+3	+5.7%	7
Staff Nurse/ Staff Midwife	219	239	216	219	213	-22	-3	-6	-25	-6	-10.6%	230
<i>Nursing/ Midwifery awaiting registration</i>		1	1	1	1	+0	+0	+0	+0	+0	+2.0%	1
Nursing/ Midwifery Student		1	1	1	1	+0	+0	+0	+0	+1	+2.0%	1
Nursing & Midwifery	299	334	325	334	329	-9	+4	-5	-4	+30	-1.3%	350
<i>Dietitians</i>	1	2	1	1	1	-1	+1	+0	-0	-0	-11.9%	2
<i>Occupational Therapists</i>	4	5	6	4	4	+1	-2	-0	-1	-1	-20.2%	5
<i>Physiotherapists</i>	9	10	9	10	10	-1	+0	-0	-0	-0	-3.9%	11
<i>Podiatrists & Chiropodists</i>			1	0	0	+1	-0	-0	+0	+0	-100.0%	1
<i>Speech & Language Therapists</i>		1	2	1	1	+1	-1	+0	+0	+0	+1.0%	1
Therapy Professions	14	18	18	17	16	+1	-2	-0	-2	+3	-8.7%	20
Social Workers	11	5	5	5	5	-0	+0	+0	+0	-6	+1.8%	5
Pharmacy	3	3	3	3	3	+0	+0	+0	+0	+1	+1.0%	3
H&SC, Other	1	1	2	1	2	+1	+0	+0	+1	+1	+51.5%	2
Health & Social Care Professionals	28	27	28	26	26	+1	-2	-0	-1	-2	-3.4%	30
Management (VIII & above)	5	12	5	5	5	-7	-0	+0	-7	-0	-57.8%	5
Administrative/ Supervisory (V to VII)	12	20	18	16	16	-1	-2	+0	-4	+5	-18.5%	17
Clerical (III & IV)	34	42	46	47	47	+4	+1	-0	+5	+13	+11.6%	51
Management & Administrative	51	74	69	68	68	-4	-1	+0	-6	+17	-7.5%	73
Support	110	104	106	110	107	+2	+1	-3	+3	-3	+3.0%	119
Maintenance/ Technical	2	2	2	3	3	+0	+1	+0	+1	+1	+51.5%	3
General Support	112	106	108	113	110	+2	+2	-3	+4	-2	+4.0%	122
Home Help	108	117	133	133	132	+17	-2	-1	+15	+24	+12.9%	165
Health Care Assistants	388	332	350	376	371	+18	+21	-5	+39	-16	+11.8%	423
Care, other	5	6	8	8	8	+2	+0	+0	+2	+3	+34.2%	8
Patient & Client Care	500	455	492	517	511	+37	+19	-6	+56	+11	+12.4%	596



Older People Employment Report by Grade Group: SEP 2024

CHO 8

SEP 2024	WTE DEC 2019	WTE DEC 2022	WTE DEC 2023	WTE AUG 2024	WTE SEP 2024	WTE Change 2023	WTE Change 2024	WTE Change AUG 2024	WTE Change Dec 2022 to SEP 2024	WTE Change Dec 2019 to SEP 2024	% WTE Change Dec 2022 to SEP 2024	No. SEP 2024
Overall	1488	1489	1540	1495	1502	+50	-38	+7	+13	+14	+0.9%	1,858
Medical/ Dental, other	11	11	11	10	10	+0	-0	+0	-0	-0	-2.3%	17
Medical & Dental	11	11	11	10	10	+0	-0	+0	-0	-0	-2.3%	17
Nurse/ Midwife Manager	77	86	89	85	85	+2	-4	-0	-2	+8	-2.0%	89
Nurse/ Midwife Specialist & AN/MP	2	4	6	7	8	+2	+2	+0	+4	+6	+93.9%	8
Staff Nurse/ Staff Midwife	249	255	262	267	272	+7	+10	+5	+17	+23	+6.7%	302
Public Health Nurse	2	2	3	3	3	+1	-0	-0	+1	+1	+34.9%	4
Nursing/ Midwifery other		2	2	1	1	-0	-1	-0	-1	+1	-52.0%	1
Nursing & Midwifery	330	350	362	364	369	+12	+7	+5	+19	+38	+5.4%	404
Dietitians	1	3	4	4	4	+1	-0	-0	+1	+1	+29.0%	4
Occupational Therapists	9	7	7	8	8	-1	+1	+0	+0	+0	+3.8%	10
Physiotherapists	8	11	12	12	13	+1	+1	+1	+2	+2	+17.3%	15
Podiatrists & Chiropodists	1										-100.0%	
Speech & Language Therapists	2	5	8	8	8	+3	+0	-0	+3	+3	+65.5%	9
Therapy Professions	21	26	30	32	32	+4	+2	+0	+6	+11	+23.5%	38
Health Science/ Diagnostics		1	1	1	1	-0	-0	+0	-0	+1	-6.0%	1
Social Workers	7	1	1	1	1	+0	+0	+0	+0	-5	+49.5%	2
Pharmacy	3	2	2	2	2	+0	+0	+1	+0	-0	+10.2%	3
Health & Social Care Professionals	30	30	34	35	36	+4	+2	+1	+7	+7	+22.5%	44
Management (VIII & above)	6	9	10	9	10	+1	+0	+1	+1	+4	+11.1%	10
Administrative/ Supervisory (V to VII)	20	31	35	26	25	+4	-10	-1	-6	+5	-19.5%	26
Clerical (III & IV)	70	65	87	75	75	+22	-12	+0	+10	+6	+15.9%	83
Management & Administrative	95	105	132	111	110	+27	-21	-0	+5	+15	+4.9%	119
Support	26	26	30	29	28	+4	-1	-0	+3	+3	+10.1%	31
Maintenance/ Technical	24	22	25	25	25	+3	-0	-0	+2	+1	+11.1%	25
General Support	50	48	54	53	53	+6	-1	-0	+5	+4	+10.6%	56
Home Help	395	393	400	393	392	+6	-8	-1	-1	-3	-0.4%	593
Health Care Assistants	556	517	517	490	489	-1	-28	-1	-28	-67	-5.5%	572
Care, other	20	35	30	39	42	-5	+12	+3	+7	+21	+19.9%	53
Patient & Client Care	972	946	946	921	923	+1	-24	+2	-23	-50	-2.4%	1,218



Older People Employment Report by Grade Group: SEP 2024

CHO 9

SEP 2024	WTE DEC 2019	WTE DEC 2022	WTE DEC 2023	WTE AUG 2024	WTE SEP 2024	WTE Change 2023	WTE Change 2024	WTE Change AUG 2024	WTE Change Dec 2022 to SEP 2024	WTE Change Dec 2019 to SEP 2024	% WTE Change Dec 2022 to SEP 2024	No. SEP 2024
Overall	870	976	1001	999	988	+25	-13	-11	+12	+118	+1.2%	1,103
Consultants	2	3	3	2	2	+0	-1	+0	-1	+0	-20.0%	3
Registrars	6	6	8	8	9	+1	+1	+0	+2	+3	+31.5%	9
SHO/ Interns	12	8	13	14	15	+5	+2	+1	+7	+3	+84.2%	15
Medical/ Dental, other	1									-1	-100.0%	
Medical & Dental	20	17	23	24	25	+6	+2	+1	+8	+5	+48.9%	27
Nurse/ Midwife Manager	75	79	85	88	88	+6	+3	-0	+9	+13	+11.4%	93
Nurse/ Midwife Specialist & ANMP	5	11	12	14	14	+1	+1	-0	+2	+9	+20.2%	15
Staff Nurse/ Staff Midwife	227	255	249	253	252	-6	+3	-1	-2	+25	-0.9%	275
Public Health Nurse	0	1				-1			-1	-0	-100.0%	
Nursing/ Midwifery other	1									-1	-100.0%	
Nursing & Midwifery	308	346	347	355	354	+1	+7	-1	+8	+46	+2.3%	383
<i>Dietitians</i>	6	10	11	11	10	+1	-1	-1	-0	-0	-0.6%	12
<i>Occupational Therapists</i>	19	29	26	23	27	-3	+1	+4	-2	-2	-6.7%	27
<i>Physiotherapists</i>	25	42	45	35	36	+4	-9	+1	-5	-5	-12.8%	40
<i>Speech & Language Therapists</i>	4	8	8	10	12	+0	+4	+2	+4	+4	+57.1%	14
Therapy Professions	54	88	89	79	85	+1	-4	+6	-3	+30	-3.4%	93
Health Science/ Diagnostics	1	1	1	1	1	+0	+0	+0	+0	-0	+10.0%	2
Social Care	1	1	0	0	0	-1	+0	+0	-1	-1	-61.6%	1
Social Workers	21	19	17	16	17	-2	+1	+1	-2	-4	-8.1%	20
Psychologists		1	1	1	1	-0	+0	+0	-0	+1	-21.9%	1
Pharmacy	3	4	4	5	4	+0	+0	-1	+0	+1	+0.6%	5
H&SC, Other	0	1	3	4	4	+3	+1	+0	+3	+3	+537.5%	4
Health & Social Care Professionals	81	114	115	106	112	+1	-3	+6	-2	+31	-2.0%	126
Management (VIII & above)	9	13	14	12	12	+1	-2	-0	-1	+3	-6.1%	12
Administrative/ Supervisory (V to VII)	15	27	27	29	31	+0	+4	+2	+4	+16	+15.1%	33
Clerical (III & IV)	40	56	58	58	57	+3	-2	-1	+1	+17	+1.3%	66
Management & Administrative	64	96	100	99	100	+4	+0	+1	+4	+36	+4.2%	111
Support	118	119	111	110	107	-8	-4	-3	-12	-11	-10.1%	123
Maintenance/ Technical	2	2	2	2	2	+0	+0	+0	+0	+0	+0.0%	3
General Support	121	122	114	113	110	-8	-4	-3	-12	-11	-9.9%	126
Health Care Assistants	270	275	296	296	282	+21	-14	-15	+7	+12	+2.4%	323
Care, other	6	6	7	6	5	+0	-1	-0	-1	-1	-14.6%	7
Patient & Client Care	276	281	302	302	287	+21	-15	-15	+6	+11	+2.0%	330



Older People Employment Report by Grade Group: SEP 2024

other Community Services

SEP 2024	WTE DEC 2019	WTE DEC 2022	WTE DEC 2023	WTE AUG 2024	WTE SEP 2024	WTE Change 2023	WTE Change 2024	WTE Change AUG 2024	WTE Change Dec 2022 to SEP 2024	WTE Change Dec 2019 to SEP 2024	% WTE Change Dec 2022 to SEP 2024	No. SEP 2024
Overall	74	95	128	122	122	+32	-6	+0	+27	+47	+28.0%	131
Nurse/ Midwife Manager		2	3	3	3	+1	-0	-0	+1	+3	+49.0%	3
Nursing & Midwifery		2	3	3	3	+1	-0	-0	+1	+3	+49.0%	3
Health Science/ Diagnostics	1									-1	-100.0%	
Social Care			1	1	1	+1	+0	+0	+1	+1	-100.0%	1
Health & Social Care Professionals	1		1	1	1	+1	+0	+0	+1	+0	-100.0%	1
Management (VIII & above)	19	19	27	21	21	+7	-6	+0	+2	+2	+8.9%	22
Administrative/ Supervisory (V to VII)	23	40	42	41	41	+2	-1	+0	+1	+17	+2.6%	44
Clerical (III & IV)	31	33	54	55	55	+21	+1	-0	+22	+24	+67.5%	60
Management & Administrative	73	92	123	117	117	+31	-6	+0	+25	+44	+27.1%	126
Health Care Assistants	0	0				-0			-0	-0	-100.0%	
Care, other		1	1	1	1	+0	+0	+0	+0	+1	+1.2%	1
Patient & Client Care	0	1	1	1	1	-0	+0	+0	-0	+1	-22.3%	1

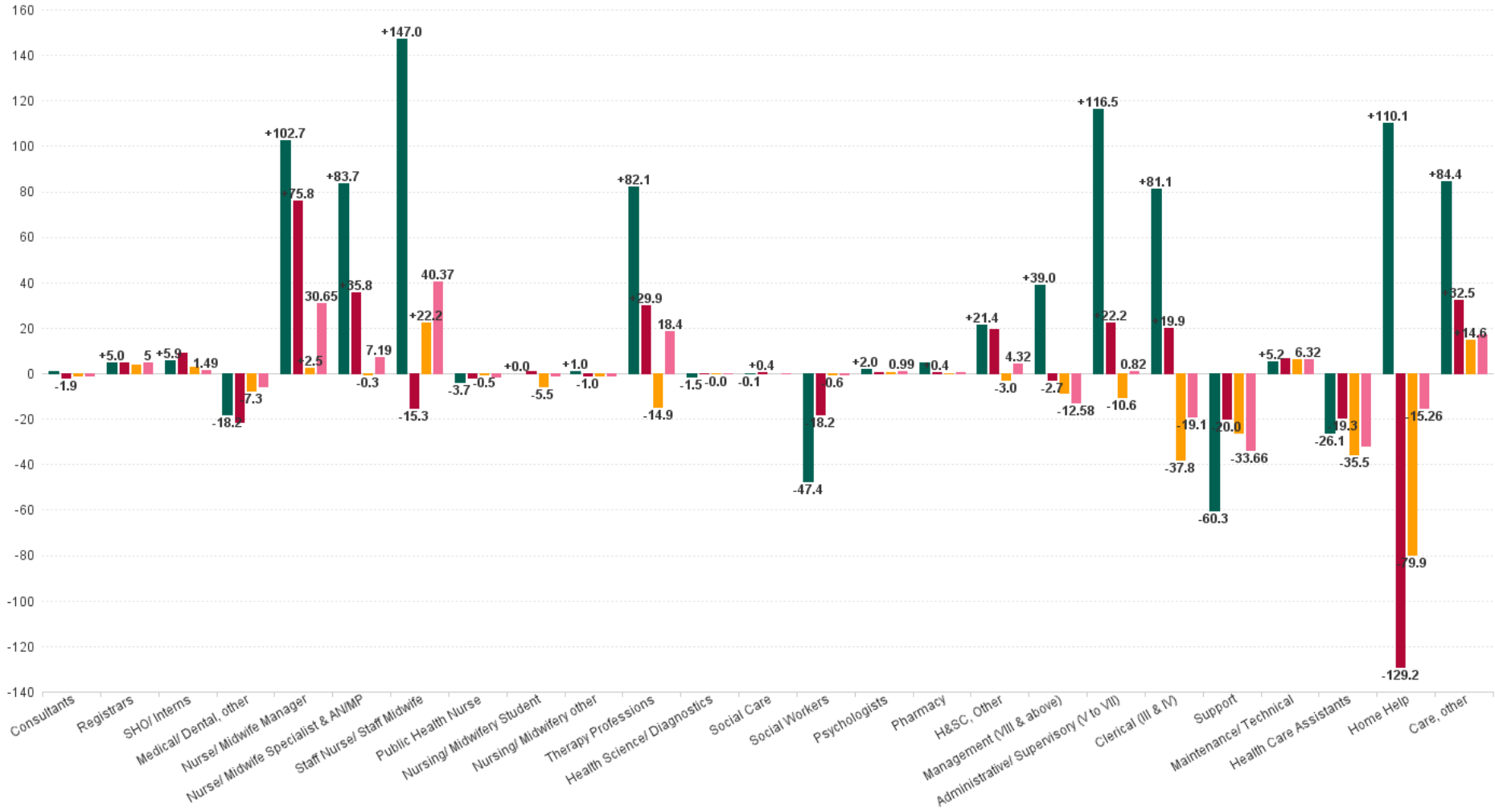


SEP 2024	WTE DEC 2019	WTE DEC 2022	WTE DEC 2023	WTE AUG 2024	WTE SEP 2024	WTE Change 2023	WTE Change 2024	WTE Change AUG 2024	WTE Change Dec 2022 to SEP 2024	WTE Change Dec 2019 to SEP 2024	% WTE Change Dec 2022 to SEP 2024	No. SEP 2024
Overall	13,239	13,947	14,154	14,024	13,975	+207	-179	-49	+27	+736	0.20%	16,821
Play Therapists/ Specialists	1	1	2	1	2	+1	+0	+0	+1	+1	51.52%	2
H&SC, Other	1	3	26	23	23	+22	-3	-1	+19	+21	573.08%	25
Health & Social Care Professionals	414	443	493	469	475	+50	-18	+6	+32	+61	7.32%	547
CEO/Chief Officer	1	2	1			-1	-1		-2	-1	-100.00%	
General Managers	21	26	34	30	30	+8	-4	-0	+4	+9	14.18%	31
National Director	1	1	1	1	1	+0	+0	+0	+0	+0	0.00%	1
National Director, Assistant	4	5	5	3	3	+0	-2	+0	-2	-1	-39.64%	3
Other Executives	6	6	10	10	10	+4	+0	+0	+4	+4	67.79%	10
VIII	42	76	72	70	70	-5	-2	+0	-7	+28	-8.51%	72
Management (VIII & above)	75	116	122	113	114	+6	-9	+0	-3	+39	-2.36%	117
Middle Management (V-VII)	168	263	296	285	285	+33	-11	-0	+22	+117	8.46%	300
Other Administrative	1									-1	-100.00%	
Administrative/ Supervisory (V to VII)	169	263	296	285	285	+33	-11	-0	+22	+116	8.46%	300
General Administrative (III & IV)	570	631	689	657	651	+58	-38	-5	+20	+81	3.16%	742
Clerical (III & IV)	570	631	689	657	651	+58	-38	-5	+20	+81	3.16%	742
Management & Administrative	813	1010	1107	1055	1050	+96	-57	-5	+39	+237	3.90%	1,159
Catering	223	217	341	366	384	+124	+43	+18	+167	+162	76.82%	440
Household Services	461	441	319	282	265	-123	-54	-17	-176	-196	-39.98%	304
Other Support	32	27	22	18	18	-5	-4	-0	-9	-13	-33.08%	22
Portering	81	71	80	74	69	+9	-11	-4	-1	-12	-2.09%	73
Support	797	757	762	740	736	+6	-26	-4	-20	-60	-2.65%	839
Maintenance	95	90	90	97	97	+0	+6	-0	+7	+1	7.28%	100
Technical Services		4	4	4	4	+0	+0	+0	+0	+4	0.00%	4
Maintenance/ Technical	95	94	94	101	101	+0	+6	-0	+7	+5	6.97%	104
General Support	892	851	857	841	837	+6	-20	-4	-13	-55	-1.58%	943
Home Helps	3,448	3,687	3,638	3,577	3,558	-49	-80	-19	-129	+110	-3.50%	4,995
Home Help	3,448	3,687	3,638	3,577	3,558	-49	-80	-19	-129	+110	-3.50%	4,995
Attendant/ Aide	2,328	1,632	1,531	1,398	1,394	-101	-137	-3	-238	-934	-14.56%	1,632
Health Care Assistant/ Care Assistant	1,729	2,378	2,470	2,596	2,575	+93	+104	-21	+197	+846	8.29%	2,938
Health & Social Care Assistants	22	63	87	87	84	+24	-3	-3	+21	+62	33.93%	90
Health Care Assistants	4,079	4,072	4,089	4,081	4,053	+16	-36	-28	-19	-26	-0.47%	4,660
Home Care Services	84	143	164	175	182	+21	+18	+7	+39	+97	27.11%	192
Other Care Grades	22	23	21	22	22	-2	+1	+0	-1	+0	-2.31%	29
Pastoral Care	32	23	22	19	19	-1	-3	-0	-4	-13	-17.34%	41
Workshop Services	2	4	4	2	2	+0	-2	+0	-2	-0	-48.48%	2
Care, other	140	192	210	218	225	+18	+15	+6	+33	+84	16.92%	264
Patient & Client Care	7667	7951	7936	7876	7836	-15	-101	-40	-116	+168	-1.46%	9,919



WTE Change by Staff Category

■ WTE change since DEC 2019
 ■ WTE change since DEC 2022
 ■ WTE change since DEC 2023
 ■ WTE change since SEP 2023



SEP 2024	WTE SEP 2024	No. SEP 2024	WTE : No	% Male	% Female	Male WTE : No.	Female WTE : No	Perm Count %	Number Male %	Number Female %	Fulltime Count %	Part time Count %	FT Count Male %	FT Count Female %
Total	13,975	16,821	1:0.8	14.66%	85.34%	1:0.9	1:0.8	90.70%	12.98%	77.71%	53.20%	46.80%	76.68%	49.17%
CHO 1	2,226	2,619	1:0.8	13.10%	86.90%	1:0.9	1:0.8	80.11%	11.38%	68.73%	38.72%	61.28%	59.18%	35.63%
CHO 2	1,484	1,792	1:0.8	15.01%	84.99%	1:0.9	1:0.8	98.27%	14.29%	83.98%	56.31%	43.69%	85.13%	51.21%
CHO 3	1,343	1,616	1:0.8	13.99%	86.01%	1:0.9	1:0.8	92.64%	12.25%	80.38%	61.08%	38.92%	88.05%	56.69%
CHO 4	2,769	3,613	1:0.8	12.62%	87.38%	1:0.9	1:0.8	86.13%	9.99%	76.14%	37.64%	62.36%	63.82%	33.86%
CHO 5	1,653	2,000	1:0.8	10.70%	89.30%	1:0.9	1:0.8	97.65%	10.00%	87.65%	47.15%	52.85%	67.29%	44.74%
CHO 7	1,048	1,175	1:0.9	18.47%	81.53%	1:1	1:0.9	92.17%	16.09%	76.09%	72.77%	27.23%	90.32%	68.79%
CHO 8	1,502	1,858	1:0.8	12.76%	87.24%	1:0.9	1:0.8	91.77%	11.03%	80.73%	58.07%	41.93%	77.22%	55.27%
CHO 9	988	1,103	1:0.9	21.49%	78.51%	1:0.9	1:0.9	95.92%	20.58%	75.34%	76.88%	23.12%	87.76%	73.90%
CHO 6	841	914	1:0.9	25.93%	74.07%	1:1	1:0.9	94.42%	24.07%	70.35%	80.53%	19.47%	88.19%	77.84%
other Community Services	122	131	1:0.9	22.90%	77.10%	1:1	1:0.9	96.18%	22.90%	73.28%	90.08%	9.92%	96.67%	88.12%



Previous Month Summary

	% WTE change since AUG 2024	WTE change since AUG 2024	CHO 1	CHO 2	CHO 3	CHO 4	CHO 5	CHO 6	CHO 7	CHO 8	CHO 9	other Community Services
Total	-0.4%	-49.2	+12.8	-5.3	-3.9	-21.8	-22.0	+7.7	-13.4	+7.3	-10.8	+0.3
Consultants	-11.8%	-0.6			-0.6	+0.0		+0.0			+0.0	
Registrars	+0.3%	+0.0	+0.0		-0.1			+0.0			+0.1	
SHO/ Interns	+4.6%	+0.9			+0.0	+0.0			+0.0		+0.9	
Medical/ Dental, other	+0.7%	+0.6	+0.6	-0.1	-0.2	+0.4	-0.2	+0.0	+0.0	+0.0		
Medical & Dental	+0.8%	+0.9	+0.6	-0.1	-0.8	+0.4	-0.2	+0.0	+0.0	+0.0	+1.0	
Nurse/ Midwife Manager	-0.5%	-4.1	+0.9	-0.8	+0.5	-4.0	-2.6	+0.6	+1.6	-0.3	-0.0	-0.0
Nurse/ Midwife Specialist & AN/MP	-1.1%	-1.2	-0.2	-0.4	+1.0	-0.0	-0.9	+0.2	-0.7	+0.2	-0.2	
Staff Nurse/ Staff Midwife	-0.1%	-2.0	+5.7	-0.0	-3.0	+0.2	-4.2	+1.1	-6.0	+5.1	-0.8	
Public Health Nurse	-1.5%	-0.2	+0.0	-0.0		+0.0	+0.0			-0.1		
Nursing/ Midwifery Student	+198.5%	+1.3				+1.0			+0.3			
Nursing/ Midwifery other	-2.0%	-0.0	+0.0							-0.0		
Nursing & Midwifery	-0.2%	-6.1	+6.3	-1.3	-1.6	-2.9	-7.7	+1.9	-4.8	+4.9	-1.0	-0.0
Therapy Professions	+1.7%	+6.2	+1.1	+0.3	-0.6	-0.2	+1.0	-1.3	-0.5	+0.4	+5.9	
Health Science/ Diagnostics	+3.5%	+0.2		+0.0	+0.0	+0.0				+0.1	+0.1	
Social Care	+0.0%	+0.0				+0.0					+0.0	+0.0
Social Workers	+0.8%	+0.4	-0.6	-0.0	+0.0		-0.6	+0.0	+0.3	+0.3	+1.1	
Psychologists	-4.9%	-0.2	+0.0		-0.0		-0.2	+0.0			+0.0	
Pharmacy	-0.9%	-0.2		+0.0	+0.0	+0.3	-0.0	+0.0	+0.0	+0.5	-1.0	
H&SC, Other	-2.7%	-0.6	-0.3	-0.1		-0.8	+0.5	+0.0	+0.0		+0.0	
Health & Social Care Professionals	+1.2%	+5.7	+0.2	+0.1	-0.6	-0.6	+0.7	-1.3	-0.2	+1.4	+6.1	+0.0
Management (VIII & above)	+0.1%	+0.1	-0.0	+0.0	-0.3	-1.0	+0.2	+0.2	+0.1	+0.5	-0.0	+0.4
Administrative/ Supervisory (V to VII)	-0.1%	-0.2	-0.1	+0.0	-1.2	-0.5	-0.1	-0.6	+0.4	-0.9	+2.5	+0.2
Clerical (III & IV)	-0.8%	-5.3	-1.1	-1.5	+0.9	-1.4	-1.4	+1.0	-0.1	+0.0	-1.4	-0.3
Management & Administrative	-0.5%	-5.4	-1.2	-1.4	-0.6	-2.9	-1.3	+0.6	+0.5	-0.3	+1.0	+0.3



Support	-0.5%	-3.7	+4.1	-0.2	-1.6	+0.1	-1.6	+1.6	-3.0	-0.1	-3.0	
Maintenance/ Technical	-0.2%	-0.2	+0.0	+0.3	-0.5	+0.0	+0.0	+0.0	+0.0	-0.1	+0.0	
General Support	-0.5%	-3.9	+4.1	+0.1	-2.1	+0.1	-1.6	+1.6	-3.0	-0.2	-3.0	
Health Care Assistants	-0.7%	-27.7	+5.6	-5.6	-0.0	-7.9	-4.5	+4.8	-4.6	-0.9	-14.7	
Home Help	-0.5%	-18.9	-4.0	+0.1	+1.9	-7.9	-7.1		-1.3	-0.6		
Care, other	+2.9%	+6.3	+1.1	+2.8	+0.0	-0.1	-0.4	+0.0	+0.0	+3.0	-0.2	+0.0
Patient & Client Care	-0.5%	-40.3	+2.7	-2.8	+1.9	-15.9	-12.0	+4.8	-5.9	+1.5	-14.8	+0.0



Year on Year Summary

	% WTE change since SEP 2023	WTE change since SEP 2023	CHO 1	CHO 2	CHO 3	CHO 4	CHO 5	CHO 6	CHO 7	CHO 8	CHO 9	other Community Services
Total	+0.1%	+10.4	+95.7	-97.0	+54.1	+48.6	-76.0	-8.1	+37.1	-35.6	-12.9	+4.4
Consultants	-16.5%	-0.9			-1.4	+0.0		+1.0			-0.5	
Registrars	+52.6%	+5.0	+1.0		+2.0			+0.0			+2.0	
SHO/ Interns	+7.7%	+1.5			+0.0	+1.0			+0.0		+0.5	
Medical/ Dental, other	-7.0%	-5.8	-0.5	-3.7	-0.2	+0.5	-0.7	-1.0	+0.0	-0.3		
Medical & Dental	-0.2%	-0.2	+0.5	-3.7	+0.4	+1.5	-0.7	+0.0	+0.0	-0.3	+2.0	
Nurse/ Midwife Manager	+3.9%	+30.7	+4.0	+2.9	-0.7	+12.6	+1.3	-0.4	+9.2	-1.8	+3.7	+0.0
Nurse/ Midwife Specialist & AN/MP	+7.0%	+7.2	+3.8	-1.1	+3.9	-0.2	-1.7	-0.2	-0.3	+2.7	+0.3	
Staff Nurse/ Staff Midwife	+1.5%	+40.4	+5.7	+2.1	+2.0	+41.3	-23.3	+2.5	-4.8	+13.7	+1.2	
Public Health Nurse	-11.0%	-1.3	+0.0	+0.1			-0.2	+0.0		-0.2	-1.0	
Nursing/ Midwifery Student	-33.3%	-1.0					+1.0	-2.0	+0.0			
Nursing/ Midwifery other	-31.9%	-0.9	+0.0							-0.9		
Nursing & Midwifery	+2.1%	+75.0	+13.4	+4.0	+5.2	+54.4	-25.7	+1.9	+4.1	+13.5	+4.2	+0.0
Therapy Professions	+5.2%	+18.4	+7.4	+2.3	+0.3	+0.3	+0.8	+2.6	-3.1	+9.6	-1.7	
Health Science/ Diagnostics	+0.6%	+0.0		-0.1	+0.0	+0.0				+0.0	+0.1	
Social Care	+0.4%	+0.0				+0.0					+0.0	+0.0
Social Workers	-1.3%	-0.7	-0.8	+1.0	-1.0		+0.0	-0.2	-0.3	+0.0	+0.6	
Psychologists	+31.9%	+1.0	+0.5		-0.0		+0.0	+0.5			+0.0	
Pharmacy	+2.5%	+0.5		+0.0	+0.0	-0.2	-0.1	+0.8	+0.0	+0.0	+0.0	
H&SC, Other	+23.4%	+4.3	-0.3	+1.0		+2.3	-1.8	+0.1	+0.0		+3.0	
Health & Social Care Professionals	+5.2%	+23.6	+6.9	+4.1	-0.7	+2.3	-1.1	+3.7	-3.3	+9.7	+2.0	+0.0
Management (VIII & above)	-10.0%	-12.6	-0.0	+0.0	-0.9	-4.7	+0.2	+1.5	-1.0	-0.9	-2.0	-4.8
Administrative/ Supervisory (V to VII)	+0.3%	+0.8	+2.0	+2.0	-1.9	+8.4	+0.6	-1.8	-2.0	-11.8	+4.0	+1.3
Clerical (III & IV)	-2.8%	-19.1	-7.9	-4.8	-3.4	+2.4	-10.6	-0.1	+9.6	-10.2	-2.0	+7.9
Management & Administrative	-2.9%	-30.9	-5.9	-2.8	-6.1	+6.1	-9.9	-0.5	+6.6	-22.9	-0.0	+4.4
Support	-4.4%	-33.7	-5.5	-5.7	+5.9	-7.2	-14.1	-0.6	-1.8	-0.9	-3.7	
Maintenance/ Technical	+6.7%	+6.3	+0.7	-1.0	+3.5	+0.0	+0.0	+1.0	+1.0	+1.1	+0.0	



General Support	-3.2%	-27.3	-4.8	-6.7	+9.4	-7.2	-14.1	+0.4	-0.8	+0.2	-3.7	
Health Care Assistants	-0.8%	-31.9	+4.9	-12.7	+27.9	+10.5	-24.9	-13.3	+26.0	-34.3	-16.0	
Home Help	-0.4%	-15.3	+75.2	-80.7	+17.5	-20.3	-0.0		+3.5	-10.4		
Care, other	+8.4%	+17.3	+5.6	+1.4	+0.5	+1.2	+0.4	-0.3	+1.0	+8.8	-1.4	+0.0
Patient & Client Care	-0.4%	-29.8	+85.7	-92.0	+45.9	-8.6	-24.5	-13.6	+30.6	-35.9	-17.4	+0.0



Year to Date Summary

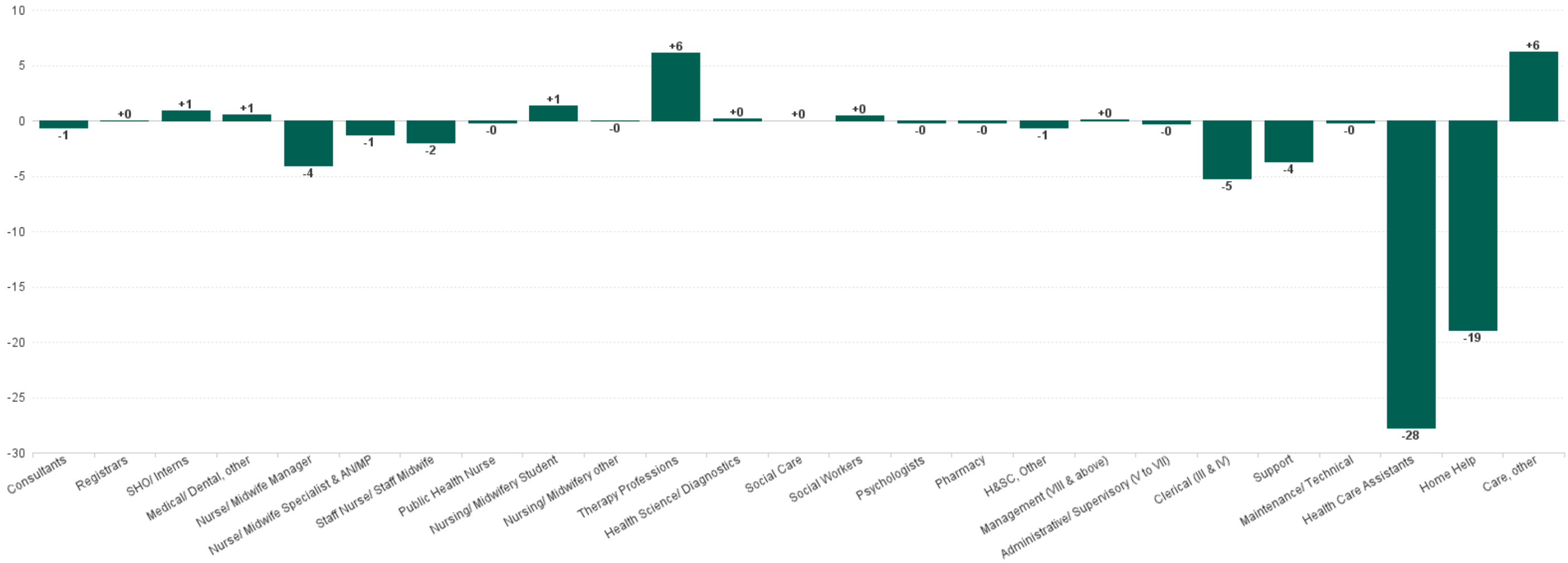
	% WTE change since DEC 2023	WTE change since DEC 2023	CHO 1	CHO 2	CHO 3	CHO 4	CHO 5	CHO 6	CHO 7	CHO 8	CHO 9	other Community Services
Total	-1.3%	-179.3	+24.1	-112.4	+22.8	+16.9	-80.8	-17.1	+23.2	-37.6	-12.7	-5.7
Consultants	-13.9%	-0.8			-1.3	+0.0		+1.0			-0.5	
Registrars	+38.1%	+4.0	+1.0		+2.0			+0.0			+1.0	
SHO/ Interns	+16.2%	+2.9			+0.0	+1.0			+0.0		+1.9	
Medical/ Dental, other	-8.7%	-7.3	-5.9	-0.4	-0.2	+1.5	-1.3	-1.0	+0.0	-0.3		
Medical & Dental	-1.0%	-1.2	-4.9	-0.4	+0.6	+2.5	-1.3	+0.0	+0.0	-0.3	+2.4	
Nurse/ Midwife Manager	+0.3%	+2.5	+3.0	+1.0	-2.4	+4.9	-8.3	-2.6	+8.1	-4.1	+2.9	-0.0
Nurse/ Midwife Specialist & AN/MP	-0.3%	-0.3	-0.0	-0.9	+1.6	-1.1	-1.9	-0.1	-0.8	+1.7	+1.2	
Staff Nurse/ Staff Midwife	+0.8%	+22.2	-2.0	-8.2	+3.0	+27.2	-9.6	+1.6	-3.0	+10.0	+3.3	
Public Health Nurse	-4.7%	-0.5	+0.0	-0.0			-0.4	+0.0		-0.2		
Nursing/ Midwifery Student	-73.3%	-5.5					-3.5	-2.0		+0.0		
Nursing/ Midwifery other	-32.4%	-0.9	+0.0							-0.9		
Nursing & Midwifery	+0.5%	+17.4	+1.0	-8.2	+2.3	+27.0	-21.9	-1.1	+4.4	+6.5	+7.3	-0.0
Therapy Professions	-3.9%	-14.9	-3.1	+0.5	-4.9	-2.2	+1.9	-2.9	-2.1	+2.3	-4.5	
Health Science/ Diagnostics	-0.4%	-0.0		-0.1	+0.0	+0.0				-0.0	+0.1	
Social Care	+0.0%	+0.0				+0.0					+0.0	+0.0
Social Workers	-1.1%	-0.6	-1.9	-0.1	+0.0		-0.5	+1.0	+0.3	+0.0	+0.6	
Psychologists	+8.2%	+0.3	+0.5		+0.0		-0.2	+0.0			+0.0	
Pharmacy	+0.3%	+0.0		+0.0	+0.0	-0.2	-0.1	+0.3	+0.0	+0.0	+0.0	
H&SC, Other	-11.6%	-3.0	-0.3	-0.7			-0.7	-1.8	+0.0	+0.0	+0.5	



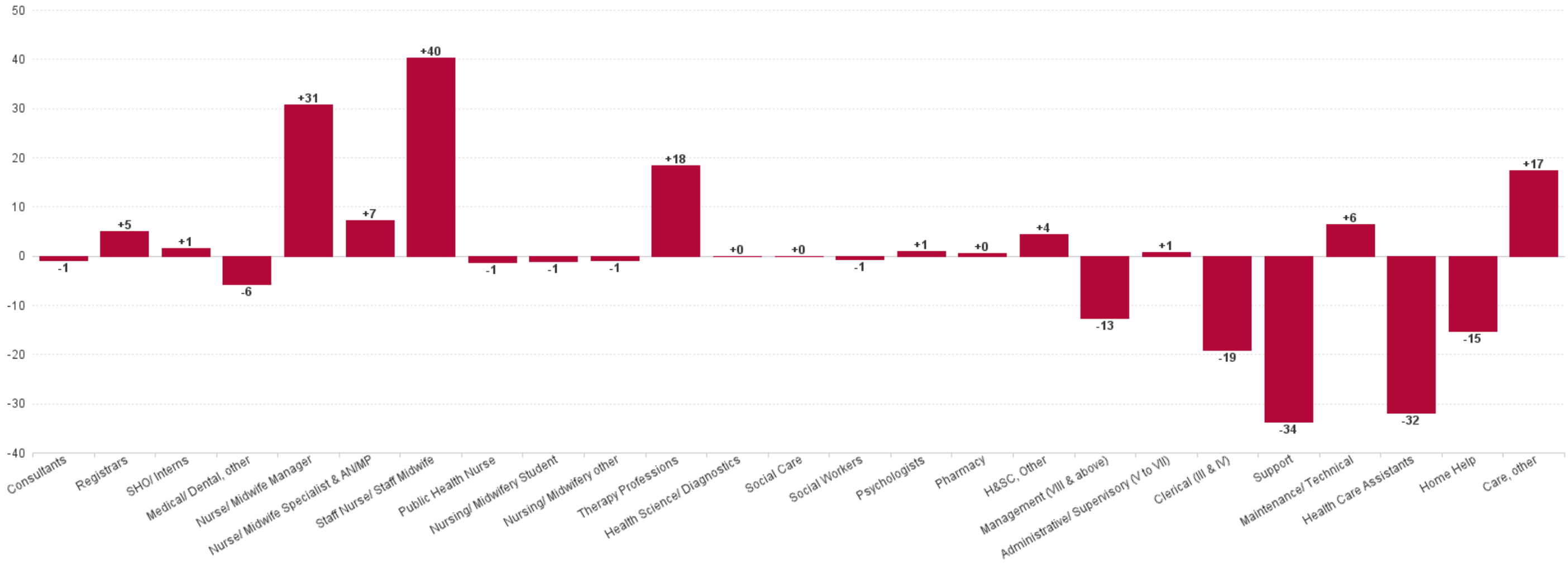
Health & Social Care Professionals	-3.7%	-18.1	-4.7	-0.4	-4.9	-3.0	-0.7	-1.6	-1.9	+2.4	-3.3	+0.0
Management (VIII & above)	-7.1%	-8.7	+0.9	-0.1	+0.3	-3.4	+0.9	+0.2	-0.0	+0.2	-2.0	-5.7
Administrative/ Supervisory (V to VII)	-3.6%	-10.6	-1.0	-0.6	-4.0	+8.0	+1.4	-5.7	-2.2	-9.8	+4.0	-0.8
Clerical (III & IV)	-5.5%	-37.8	-10.7	-2.0	-3.7	-0.8	-7.1	-1.8	+1.2	-11.9	-1.8	+0.9
Management & Administrative	-5.2%	-57.0	-10.7	-2.6	-7.4	+3.8	-4.7	-7.3	-1.1	-21.5	+0.1	-5.7
Support	-3.4%	-25.9	-6.2	-5.4	+6.0	-4.9	-8.6	-3.3	+1.4	-1.0	-4.0	
Maintenance/ Technical	+6.7%	+6.3	+0.7	-0.2	+3.8	+0.0	+0.0	+1.0	+1.0	-0.1	+0.0	
General Support	-2.3%	-19.6	-5.5	-5.5	+9.8	-4.9	-8.6	-2.3	+2.4	-1.1	-4.0	
Health Care Assistants	-0.9%	-35.5	-0.2	-26.3	+26.1	+14.2	-23.6	-4.8	+20.9	-27.8	-14.0	
Home Help	-2.2%	-79.9	+44.7	-72.4	-3.1	-23.3	-16.7		-1.5	-7.6		
Care, other	+6.9%	+14.6	+4.3	+3.3	-0.7	+0.5	-3.3	+0.0	+0.0	+11.8	-1.2	+0.0
Patient & Client Care	-1.3%	-100.8	+48.8	-95.4	+22.3	-8.6	-43.7	-4.8	+19.4	-23.6	-15.2	+0.0



Previous Month Summary Chart: Change since AUG 2024



Previous Year Summary Chart: Change since SEP 2023



YTD Summary Chart: Change since DEC 2023

