

Older People Employment Report : OCT 2024

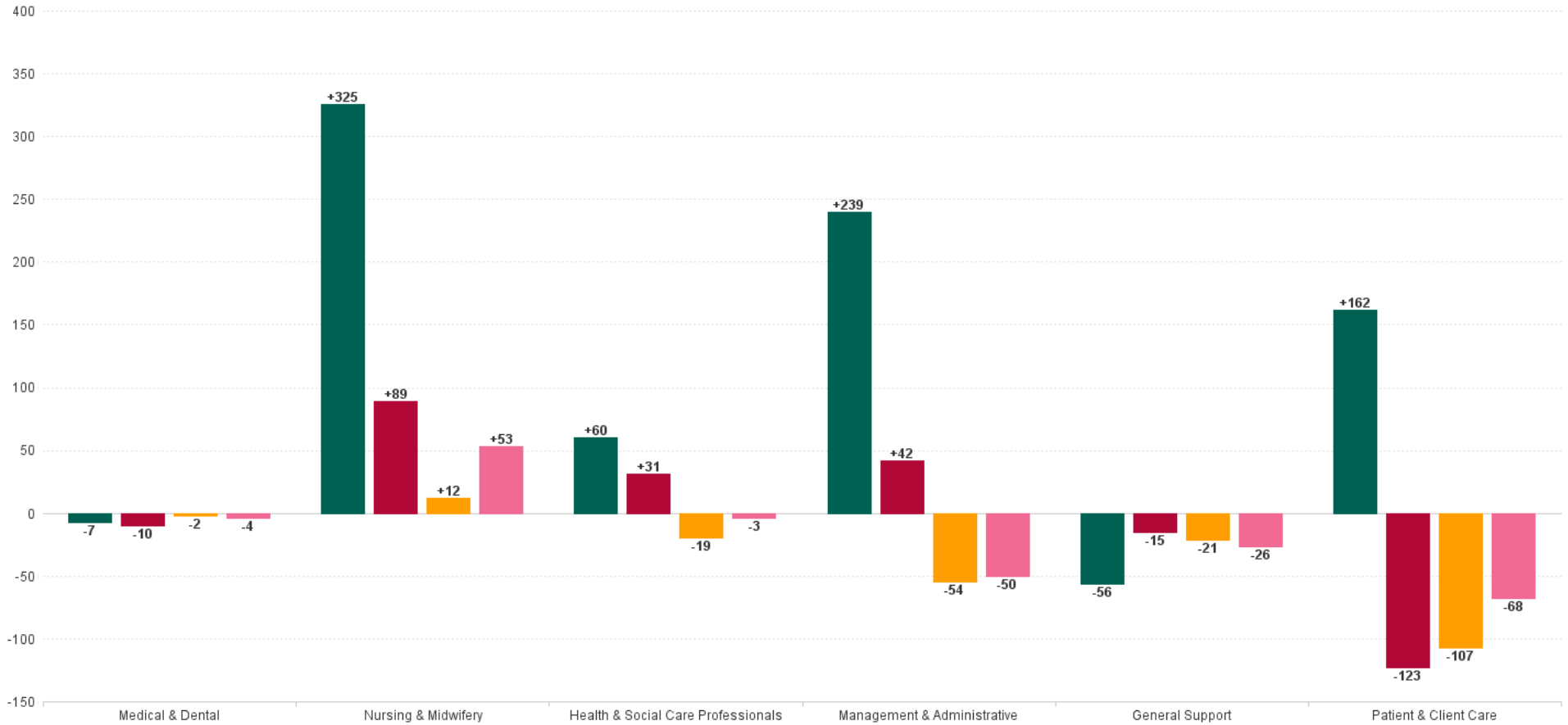
Older People Employment Report by Staff Group

OCT 2024	WTE DEC 2019	WTE DEC 2022	WTE DEC 2023	WTE SEP 2024	WTE OCT 2024	WTE Change 2023	WTE Change 2024	WTE Change SEP 2024	WTE Change Dec 2022 to OCT 2024	WTE Change Dec 2019 to OCT 2024	% WTE Change Dec 2022 to OCT 2024	No. OCT 2024
Overall	13,239	13,947	14,154	13,975	13,962	+207	-192	-13	+15	+723	+0.1%	16,804
Consultants	4	7	5	5	6	-1	+1	+1	-1	+2	-8.8%	9
Registrars	10	10	11	15	14	+1	+4	-1	+5	+5	+47.5%	16
SHO/ Interns	15	12	18	21	19	+6	+1	-2	+7	+4	+61.0%	21
Medical/ Dental, other	95	98	85	77	77	-14	-8	-0	-21	-18	-21.7%	148
Medical & Dental	124	126	118	117	116	-8	-2	-1	-10	-7	-8.0%	194
Nurse/ Midwife Manager	711	738	811	813	813	+73	+2	-1	+75	+102	+10.2%	858
Nurse/ Midwife Specialist & ANMP	26	74	111	110	109	+36	-2	-1	+34	+82	+46.3%	115
Staff Nurse/ Staff Midwife	2,575	2,737	2,700	2,722	2,718	-38	+19	-4	-19	+143	-0.7%	3,094
Public Health Nurse	14	13	11	11	9	-1	-2	-2	-4	-5	-28.7%	10
<i>Nursing/ Midwifery awaiting registration</i>	1	1	7	2	4	+7	-3	+2	+3	+3	+308.2%	6
<i>Post-registration Nurse/ Midwife Student</i>	1									-1	-100.0%	
Nursing/ Midwifery Student	2	1	7	2	4	+7	-3	+2	+3	+2	+308.2%	6
Nursing/ Midwifery other	1	3	3	2	2	-0	-1	+0	-1	+1	-34.7%	2
Nursing & Midwifery	3,329	3,566	3,643	3,660	3,655	+77	+12	-5	+89	+325	+2.5%	4,085
<i>Dietitians</i>	16	25	30	32	33	+5	+2	+1	+7	+16	+29.6%	38
<i>Occupational Therapists</i>	113	125	144	141	141	+19	-3	-0	+16	+27	+12.5%	156
<i>Physiotherapists</i>	123	152	163	149	147	+11	-16	-2	-5	+24	-3.3%	168
<i>Podiatrists & Chiropodists</i>	12	3	5	5	5	+1	+0	-0	+1	-7	+42.7%	6
<i>Speech & Language Therapists</i>	23	34	43	43	41	+9	-2	-1	+7	+18	+21.7%	49
Therapy Professions	288	340	385	370	367	+45	-18	-3	+27	+79	+7.9%	417
Health Science/ Diagnostics	6	5	5	5	5	-0	+0	+0	+0	-1	+0.0%	8
Social Care	3	2	3	3	3	+0	-0	-0	+0	-0	+17.3%	4
Social Workers	98	69	52	51	51	-18	-1	+0	-18	-47	-26.2%	58
Psychologists	2	4	4	4	4	+0	+0	+0	+1	+2	+22.0%	6
Pharmacy	15	20	20	20	21	+0	+1	+1	+1	+6	+7.3%	30
H&SC, Other	1	3	26	23	23	+22	-3	+0	+20	+22	+584.0%	26
Health & Social Care Professionals	414	443	493	475	474	+50	-19	-1	+31	+60	+7.0%	549
Management (VIII & above)	75	116	122	114	114	+6	-8	+1	-2	+40	-1.8%	116
Administrative/ Supervisory (V to VII)	169	263	296	285	285	+33	-10	+0	+23	+117	+8.6%	302
Clerical (III & IV)	570	631	689	651	653	+58	-36	+2	+22	+83	+3.4%	741
Management & Administrative	813	1,010	1,107	1,050	1,053	+96	-54	+3	+42	+239	+4.2%	1,159
Support	797	757	762	736	736	+6	-27	-1	-21	-61	-2.7%	838
Maintenance/ Technical	95	94	94	101	100	+0	+6	-1	+6	+5	+6.4%	105
General Support	892	851	857	837	836	+6	-21	-1	-15	-56	-1.7%	943
Home Help	3,448	3,687	3,638	3,558	3,558	-49	-79	+1	-129	+111	-3.5%	4,969
Health Care Assistants	4,079	4,072	4,089	4,053	4,046	+16	-43	-7	-26	-33	-0.6%	4,641
Care, other	140	192	210	225	224	+18	+14	-0	+32	+84	+16.8%	264
Patient & Client Care	7,667	7,951	7,936	7,836	7,829	-15	-107	-7	-123	+162	-1.5%	9,874



WTE Change by Staff Category

■ WTE change since DEC 2019 ■ WTE change since DEC 2022 ■ WTE change since DEC 2023 ■ WTE change since OCT 2023



Older People Report by CHO: OCT 2024

OCT 2024	WTE DEC 2019	WTE DEC 2022	WTE DEC 2023	WTE SEP 2024	WTE OCT 2024	WTE Change 2023	WTE Change 2024	WTE Change SEP 2024	WTE Change Dec 2022 to OCT 2024	WTE Change Dec 2019 to OCT 2024	% WTE Change Dec 2022 to OCT 2024	No. OCT 2024
Overall	13,239	13,947	14,154	13,975	13,962	+207	-192	-13	+15	+723	0.11%	16,804
CHO 1	1,836	2,087	2,202	2,226	2,234	+114	+33	+9	+147	+399	7.03%	2,629
CHO 2	1,606	1,582	1,596	1,484	1,482	+14	-114	-2	-100	-124	-6.35%	1,791
CHO 3	974	1,264	1,320	1,343	1,331	+56	+11	-11	+67	+357	5.32%	1,608
CHO 4	2,919	3,000	2,752	2,769	2,773	-248	+21	+4	-227	-146	-7.58%	3,615
CHO 5	1,653	1,641	1,733	1,653	1,649	+92	-84	-3	+8	-4	0.49%	1,995
CHO 6	823	813	858	841	836	+46	-22	-5	+23	+13	2.87%	909
CHO 7	996	999	1,025	1,048	1,046	+26	+21	-2	+47	+50	4.74%	1,166
CHO 8	1,488	1,489	1,540	1,502	1,503	+50	-37	+1	+13	+14	0.89%	1,859
CHO 9	870	976	1,001	988	986	+25	-15	-2	+10	+116	0.99%	1,101
other Community Services	74	95	128	122	122	+32	-5	+0	+27	+48	28.30%	131



% Total by CHO



Older People Employment Report by HSE/S38: OCT 2024

OCT 2024	WTE DEC 2019	WTE DEC 2022	WTE DEC 2023	WTE SEP 2024	WTE OCT 2024	WTE Change 2023	WTE Change 2024	WTE Change SEP 2024	WTE Change Dec 2022 to OCT 2024	WTE Change Dec 2019 to OCT 2024	% WTE Change Dec 2022 to OCT 2024	No. OCT 2024
Overall	13,239	13,947	14,154	13,975	13,962	+207	-192	-13	+15	+723	0.11%	16,804
Health Service Executive	12,531	13,217	13,389	13,066	13,054	+172	-335	-12	-163	+523	-1.23%	15,776
Section 38 Voluntary Agencies	708	731	765	909	908	+35	+143	-1	+177	+200	24.28%	1,028



Older People Employment Report by HSE: OCT 2024

OCT 2024	WTE DEC 2019	WTE DEC 2022	WTE DEC 2023	WTE SEP 2024	WTE OCT 2024	WTE Change 2023	WTE Change 2024	WTE Change SEP 2024	WTE Change Dec 2022 to OCT 2024	WTE Change Dec 2019 to OCT 2024	% WTE Change Dec 2022 to OCT 2024	No. OCT 2024
Total HSE	12,531	13,217	+13,389	13,066	13,054	+172	-335	-12	-163	+523	-1.23%	15,776
Consultants	3	5	+4	3	4	-1	+0	+1	-1	+1	-21.34%	6
Registrars	7	7	+7	12	11	+0	+5	-1	+5	+5	69.38%	13
SHO/ Interns	10	8	+12	14	12	+4	+0	-2	+4	+2	53.99%	14
Medical/ Dental, other	93	97	+83	76	75	-15	-7	-0	-22	-18	-22.44%	146
Medical & Dental	113	117	+105	104	103	-12	-2	-1	-14	-10	-12.04%	179
Nurse/ Midwife Manager	657	687	+754	739	738	+67	-16	-1	+50	+81	7.30%	779
Nurse/ Midwife Specialist & AN/MP	26	74	+110	109	108	+35	-2	-1	+33	+81	44.95%	114
Staff Nurse/ Staff Midwife	2,399	2,566	+2,529	2,489	2,488	-37	-40	-1	-77	+89	-3.01%	2,835
Public Health Nurse	14	13	+11	11	9	-1	-2	-2	-4	-5	-28.73%	10
Nursing/ Midwifery awaiting registration	1	1	+7	2	4	+7	-3	+2	+3	+3	308.16%	6
Post-registration Nurse/ Midwife Student	1									-1	-100.00%	
Nursing/ Midwifery Student	2	1	+7	2	4	+7	-3	+2	+3	+2	308.16%	6
Nursing/ Midwifery other	1	3	+3	2	2	-0	-1	+0	-1	+1	-34.67%	2
Nursing & Midwifery	3,100	3,344	+3,414	3,351	3,349	+70	-65	-2	+5	+249	0.15%	3,746
Dietitians	14	23	+26	27	27	+4	+1	+1	+5	+13	19.90%	32
Occupational Therapists	93	99	+119	110	107	+20	-12	-2	+8	+15	8.52%	121
Physiotherapists	93	113	+121	119	118	+8	-3	-1	+5	+25	4.21%	135
Podiatrists & Chiropodists	11	3	+5	5	5	+1	+0	-0	+1	-7	45.34%	5
Speech & Language Therapists	19	29	+38	36	34	+9	-4	-2	+5	+15	15.85%	41
Therapy Professions	230	267	+309	295	291	+42	-18	-4	+24	+61	8.91%	334
Health Science/ Diagnostics	5	4	+4	4	4	-0	-0	+0	-0	-2	-2.69%	6
Social Care	3	2	+3	3	3	+0	-0	-0	+0	-0	17.26%	4
Social Workers	84	54	+37	36	37	-17	-0	+1	-17	-48	-32.10%	40
Psychologists	2	4	+3	4	4	-0	+0	+0	+0	+2	7.71%	5
Pharmacy	11	14	+14	15	15	+1	+1	+1	+1	+5	9.84%	22
H&SC, Other	1	3	+26	23	23	+22	-3	+0	+20	+22	584.02%	26
Health & Social Care Professionals	336	348	+396	378	376	+48	-20	-2	+28	+40	8.11%	437
Management (VIII & above)	73	112	+118	109	109	+6	-9	+1	-3	+37	-2.80%	111
Administrative/ Supervisory (V to VII)	149	239	+266	260	260	+27	-6	+0	+21	+111	8.83%	276
Clerical (III & IV)	543	601	+661	624	626	+60	-35	+2	+25	+83	4.20%	706
Management & Administrative	765	952	+1,045	992	996	+93	-49	+3	+43	+231	4.54%	1,093
Support	694	645	+652	625	622	+7	-29	-3	-22	-72	-3.47%	709
Maintenance/ Technical	85	85	+84	90	89	-0	+5	-1	+4	+4	5.23%	94
General Support	780	729	+736	715	712	+7	-25	-4	-18	-68	-2.46%	803
Home Help	3,448	3,687	+3,638	3,558	3,558	-49	-79	+1	-129	+111	-3.49%	4,969
Health Care Assistants	3,856	3,851	+3,849	3,748	3,741	-2	-108	-7	-110	-115	-2.86%	4,292
Care, other	135	188	+207	220	220	+18	+13	-0	+32	+85	16.90%	257
Patient & Client Care	7,438	7,726	+7,693	7,526	7,519	-33	-174	-7	-207	+81	-2.68%	9,518



Older People Employment Report by S38 Voluntary Agencies: OCT 2024

OCT 2024	WTE DEC 2019	WTE DEC 2022	WTE DEC 2023	WTE SEP 2024	WTE OCT 2024	WTE Change 2023	WTE Change 2024	WTE Change SEP 2024	WTE Change Dec 2022 to OCT 2024	WTE Change Dec 2019 to OCT 2024	% WTE Change Dec 2022 to OCT 2024	No. OCT 2024
Total S38 Voluntary Agencies	708	731	765	909	908	+35	+143	-1	+177	+200	+24.3%	1,028
Consultants	1	2	2	2	2	+0	+1	+0	+1	+1	+33.3%	3
Registrars	3	3	4	3	3	+1	-1	+0	+0	+0	+0.0%	3
SHO/ Interns	5	4	6	7	7	+2	+1	+0	+3	+2	+75.0%	7
Medical/ Dental, other	2	1	2	2	2	+1	-1	-0	+1	-1	+50.0%	2
Medical & Dental	11	10	14	14	14	+4	+0	-0	+4	+3	+42.1%	15
Nurse/ Midwife Manager	54	50	57	75	75	+7	+18	+0	+25	+21	+49.7%	79
Nurse/ Midwife Specialist & AN/MP			1	1	1	+1	+0	+0	+1	+1	-100.0%	1
Staff Nurse/ Staff Midwife	176	172	171	233	230	-1	+59	-3	+58	+54	+33.9%	259
Nursing & Midwifery	230	222	229	309	306	+7	+77	-3	+84	+76	+37.9%	339
Dietitians	3	3	4	6	6	+1	+2	+0	+3	+3	+111.5%	6
Occupational Therapists	20	26	25	31	33	-2	+9	+2	+7	+13	+27.5%	35
Physiotherapists	30	39	42	31	29	+3	-13	-1	-10	-0	-24.9%	33
Podiatrists & Chiropodists	1	0	0	0	0	+0	+0	+0	+0	-0	+0.0%	1
Speech & Language Therapists	4	4	4	7	7	+0	+3	+0	+3	+3	+60.1%	8
Therapy Professions	58	73	75	75	76	+3	+0	+1	+3	+18	+4.2%	83
Health Science/ Diagnostics	1	1	1	1	1	+0	+0	+0	+0	+0	+10.0%	2
Social Workers	14	15	15	16	15	-0	-0	-1	-1	+1	-5.6%	18
Psychologists	1		1	1	1	+1	+0	+0	+1	+0	-100.0%	1
Pharmacy	5	6	5	5	6	-0	+0	+0	+0	+1	+1.1%	8
Health & Social Care Professionals	78	95	97	97	98	+3	+0	+1	+3	+20	+3.0%	112
Management (VIII & above)	2	4	4	5	5	+0	+1	+0	+1	+3	+25.0%	5
Administrative/ Supervisory (V to VII)	19	24	30	25	25	+6	-5	+0	+1	+6	+6.3%	26
Clerical (III & IV)	27	31	28	27	27	-2	-1	-0	-3	-0	-11.3%	35
Management & Administrative	49	58	62	57	57	+4	-5	-0	-1	+8	-1.7%	66
Support	103	112	111	111	113	-1	+3	+2	+2	+11	+1.5%	129
Maintenance/ Technical	10	9	10	11	11	+1	+1	+0	+2	+1	+16.9%	11
General Support	113	121	121	122	124	-1	+4	+2	+3	+12	+2.7%	140
Health Care Assistants	223	222	240	306	306	+18	+66	-0	+84	+82	+37.8%	349
Care, other	5	4	4	4	4	-0	+1	+0	+0	-1	+11.2%	7
Patient & Client Care	229	226	243	310	310	+18	+67	-0	+84	+81	+37.4%	356



Older People Employment Report by Grade Group: OCT 2024

CHO 1

OCT 2024	WTE DEC 2019	WTE DEC 2022	WTE DEC 2023	WTE SEP 2024	WTE OCT 2024	WTE Change 2023	WTE Change 2024	WTE Change SEP 2024	WTE Change Dec 2022 to OCT 2024	WTE Change Dec 2019 to OCT 2024	% WTE Change Dec 2022 to OCT 2024	No. OCT 2024
Overall	1836	2087	2202	2226	2234	+114	+33	+9	+147	+399	+7.0%	2,629
Registrars				1	1		+1	+0	+1	+1	-100.0%	1
Medical/ Dental, other	30	27	20	14	14	-7	-6	-0	-13	-16	-47.5%	40
Medical & Dental	30	27	20	15	15	-7	-5	-0	-12	-15	-43.8%	41
Nurse/ Midwife Manager	91	91	93	96	95	+2	+3	-0	+4	+4	+4.9%	100
Nurse/ Midwife Specialist & AN/MP	7	18	23	23	22	+4	-0	-0	+4	+16	+22.8%	23
Staff Nurse/ Staff Midwife	307	338	342	340	336	+4	-6	-4	-2	+29	-0.6%	381
Public Health Nurse		1	1	1	1	+0	-1	-1	-1		-100.0%	
Nursing/ Midwifery other		1	1	1	1	+0	+0	+0	+0	+1	+0.0%	1
Nursing & Midwifery	405	449	459	460	455	+10	-4	-5	+6	+50	+1.3%	505
<i>Dietitians</i>		1	3	3	3	+2	-0	+0	+2	+2	+169.7%	3
<i>Occupational Therapists</i>	10	20	25	23	23	+5	-2	+1	+3	+3	+13.6%	25
<i>Physiotherapists</i>	1	5	8	8	9	+3	+0	+0	+3	+3	+58.9%	9
<i>Speech & Language Therapists</i>			1	1	1	+1	+0	+0	+1	+1	-100.0%	1
Therapy Professions	11	27	37	34	35	+10	-2	+1	+8	+24	+30.5%	38
Health Science/ Diagnostics	1									-1	-100.0%	
Social Workers	18	9	12	10	11	+3	-1	+1	+1	-7	+15.2%	12
Psychologists				1	1		+1	+0	+1	+1	-100.0%	1
H&SC, Other			6	6	7	+6	+1	+1	+7	+7	-100.0%	7
Health & Social Care Professionals	30	36	55	50	53	+19	-2	+2	+17	+23	+46.4%	58
Management (VIII & above)	8	10	9	10	10	-1	+1	+0	-0	+2	-0.7%	10
Administrative/ Supervisory (V to VII)	14	25	34	33	33	+9	-1	-0	+8	+19	+31.3%	34
Clerical (III & IV)	85	86	88	77	80	+2	-8	+3	-6	-5	-6.6%	94
Management & Administrative	107	121	131	120	123	+10	-8	+3	+2	+16	+1.7%	138
Support	123	111	122	116	115	+12	-7	-1	+4	-8	+4.0%	136
Maintenance/ Technical	7	8	6	7	7	-2	+1	+0	-1	-0	-10.0%	7
General Support	130	118	129	123	122	+10	-6	-1	+4	-8	+3.1%	143
Home Help	543	748	824	869	875	+76	+51	+6	+127	+332	+16.9%	1,058
Health Care Assistants	563	564	557	557	561	-7	+5	+5	-2	-2	-0.4%	652
Care, other	28	24	27	31	30	+3	+3	-1	+6	+2	+23.1%	34
Patient & Client Care	1,134	1,336	1,408	1,456	1,466	+71	+59	+10	+130	+332	+9.7%	1,744



Older People Employment Report by Grade Group: OCT 2024

CHO 2

OCT 2024	WTE DEC 2019	WTE DEC 2022	WTE DEC 2023	WTE SEP 2024	WTE OCT 2024	WTE Change 2023	WTE Change 2024	WTE Change SEP 2024	WTE Change Dec 2022 to OCT 2024	WTE Change Dec 2019 to OCT 2024	% WTE Change Dec 2022 to OCT 2024	No. OCT 2024
Overall	1606	1582	1596	1484	1482	+14	-114	-2	-100	-124	-6.3%	1,791
Medical/ Dental, other	11	10	7	6	6	-3	-0	-0	-4	-5	-36.7%	10
Medical & Dental	11	10	7	6	6	-3	-0	-0	-4	-5	-36.7%	10
Nurse/ Midwife Manager	58	74	73	74	76	-0	+3	+2	+2	+18	+3.0%	81
Nurse/ Midwife Specialist & AN/MP	2	7	12	11	11	+5	-1	-0	+4	+9	+51.4%	11
Staff Nurse/ Staff Midwife	301	305	317	309	308	+12	-9	-1	+3	+7	+1.0%	354
Public Health Nurse	1	1	1	1	1	+0	-0	-0	-0	+0	-8.0%	1
Nursing & Midwifery	362	386	403	395	395	+17	-8	+0	+9	+33	+2.3%	447
Dietitians	1	1	2	2	2	+1	+0	+0	+1	+1	+100.0%	2
Occupational Therapists	10	10	16	16	15	+6	-0	-0	+6	+6	+58.2%	17
Physiotherapists	14	15	18	18	19	+3	+1	+0	+3	+3	+21.1%	20
Speech & Language Therapists	2	2	4	4	4	+2	+0	+0	+2	+2	+82.5%	4
Therapy Professions	26	28	39	39	40	+11	+1	+0	+12	+14	+41.2%	43
Health Science/ Diagnostics	1	1	1	1	1	+0	-0	+0	-0	+0	-13.7%	1
Social Workers	10	13	4	4	4	-9	+0	+1	-9	-6	-65.9%	5
Pharmacy	1	1	1	1	1	-0	+0	+0	-0	-0	-1.9%	1
H&SC, Other			4	3	4	+4	-0	+1	+4	+4	-100.0%	4
Health & Social Care Professionals	37	42	48	48	49	+6	+1	+1	+6	+11	+14.9%	54
Management (VIII & above)	2	6	6	6	6	+0	-0	+0	-0	+4	-1.2%	6
Administrative/ Supervisory (V to VII)	8	16	18	17	17	+2	-0	+0	+2	+10	+10.5%	18
Clerical (III & IV)	72	64	68	66	65	+4	-3	-1	+1	-7	+1.2%	73
Management & Administrative	81	86	92	89	88	+6	-4	-1	+2	+7	+2.7%	97
Support	56	51	51	45	44	+0	-6	-1	-6	-12	-12.3%	50
Maintenance/ Technical	19	20	21	21	21	+1	-1	-0	+1	+2	+2.9%	22
General Support	75	71	72	67	65	+1	-7	-1	-6	-10	-8.0%	72
Home Help	499	407	376	304	301	-31	-75	-2	-106	-198	-26.0%	468
Health Care Assistants	515	536	556	530	531	+20	-25	+1	-5	+16	-0.8%	592
Care, other	24	45	43	47	47	-2	+3	+0	+2	+22	+3.7%	51
Patient & Client Care	1,039	988	975	880	879	-13	-96	-1	-109	-160	-11.0%	1,111



Older People Employment Report by Grade Group: OCT 2024

CHO 3

OCT 2024	WTE DEC 2019	WTE DEC 2022	WTE DEC 2023	WTE SEP 2024	WTE OCT 2024	WTE Change 2023	WTE Change 2024	WTE Change SEP 2024	WTE Change Dec 2022 to OCT 2024	WTE Change Dec 2019 to OCT 2024	% WTE Change Dec 2022 to OCT 2024	No. OCT 2024
Overall	974	1264	1320	1343	1331	+56	+11	-11	+67	+357	+5.3%	1,608
Consultants	1	3	2	1	1	-1	-1	+1	-2	+0	-58.3%	2
Registrars		2	2	4	4	+0	+2	-1	+2	+4	+75.9%	4
SHO/ Interns		2	3	3	3	+1	+0	+0	+1	+3	+51.5%	3
Medical/ Dental, other	5	6	5	5	5	-1	-0	-0	-1	-0	-19.3%	5
Medical & Dental	6	13	12	12	13	-1	+1	+0	-0	+7	-2.9%	14
Nurse/ Midwife Manager	64	68	74	71	71	+5	-2	-0	+3	+8	+4.3%	74
Nurse/ Midwife Specialist & ANMP	2	11	13	14	14	+2	+1	-0	+4	+12	+33.9%	15
Staff Nurse/ Staff Midwife	239	266	276	279	277	+10	+1	-2	+11	+39	+4.2%	313
Public Health Nurse	1									-1	-100.0%	
Nursing & Midwifery	305	345	363	365	363	+17	+0	-2	+18	+58	+5.1%	402
<i>Dietitians</i>		2	2	3	3	-0	+1	+0	+1	+1	+48.0%	3
<i>Occupational Therapists</i>	12	13	21	16	15	+7	-5	-1	+2	+2	+14.0%	17
<i>Physiotherapists</i>	10	21	17	16	16	-3	-2	-1	-5	-5	-24.3%	19
<i>Podiatrists & Chiropodists</i>	3	2	3	4	4	+1	+1	-0	+2	+2	+118.2%	4
<i>Speech & Language Therapists</i>	2	6	7	6	4	+1	-4	-2	-3	-3	-44.7%	6
Therapy Professions	28	44	49	44	41	+5	-9	-4	-3	+13	-7.0%	49
Health Science/ Diagnostics	1	1	1	1	1	+0	+0	+0	+0	-0	+1.4%	2
Social Workers	7	2	2	2	2	+0	+0	+0	+0	-5	+1.0%	2
Psychologists		1	1	1	1	-0	+0	+0	+0	+1	+2.5%	1
Pharmacy	1	1	1	1	1	+0	+0	+0	+0	+0	+1.0%	1
Health & Social Care Professionals	36	48	54	49	45	+5	-9	-4	-3	+9	-6.2%	55
Management (VIII & above)	6	10	9	9	9	-1	+0	+0	-0	+4	-3.9%	10
Administrative/ Supervisory (V to VII)	21	27	28	24	24	+2	-4	+0	-2	+4	-8.5%	26
Clerical (III & IV)	50	63	68	64	64	+5	-4	+0	+1	+15	+2.3%	73
Management & Administrative	76	99	105	98	98	+6	-7	+0	-1	+22	-1.2%	109
Support	64	46	51	57	57	+6	+6	-0	+11	-7	+25.2%	67
Maintenance/ Technical	22	23	22	26	26	-0	+4	-0	+3	+4	+14.4%	28
General Support	86	68	74	84	83	+6	+9	-1	+15	-3	+21.6%	95
Home Help	175	342	364	361	362	+22	-2	+1	+20	+187	+5.8%	511
Health Care Assistants	279	331	324	350	345	-7	+21	-5	+14	+66	+4.3%	396
Care, other	10	17	25	24	23	+8	-2	-1	+6	+13	+32.3%	26
Patient & Client Care	464	690	712	735	729	+22	+17	-5	+39	+265	+5.7%	933



Older People Employment Report by Grade Group: OCT 2024

CHO 4

OCT 2024	WTE DEC 2019	WTE DEC 2022	WTE DEC 2023	WTE SEP 2024	WTE OCT 2024	WTE Change 2023	WTE Change 2024	WTE Change SEP 2024	WTE Change Dec 2022 to OCT 2024	WTE Change Dec 2019 to OCT 2024	% WTE Change Dec 2022 to OCT 2024	No. OCT 2024
Overall	2919	3000	2752	2769	2773	-248	+21	+4	-227	-146	-7.6%	3,615
Consultants	1	1	1	1	1	+0	+0	+0	+0	+0	+0.0%	2
Registrars	3	0				-0			-0	-3	-100.0%	
SHO/ Interns	1			1	1		+1	+0	+1	+0	-100.0%	1
Medical/ Dental, other	21	27	25	26	26	-2	+2	+0	-0	+6	-0.7%	55
Medical & Dental	26	28	26	28	29	-2	+3	+0	+1	+3	+2.8%	58
Nurse/ Midwife Manager	118	109	119	124	123	+10	+4	-1	+14	+5	+12.7%	133
Nurse/ Midwife Specialist & ANMP	3	6	11	10	10	+6	-1	-0	+4	+7	+73.7%	11
Staff Nurse/ Staff Midwife	515	575	513	541	545	-62	+31	+4	-31	+30	-5.3%	665
Public Health Nurse	5	6	5	4	4	-2	-0	-0	-2	-1	-34.5%	5
<i>Nursing/ Midwifery awaiting registration</i>	1		5	1	2	+5	-3	+1	+2	+2	-100.0%	3
<i>Post-registration Nurse/ Midwife Student</i>	1										-100.0%	
Nursing/ Midwifery Student	2		5	1	2	+5	-3	+1	+2	-1	-100.0%	3
Nursing & Midwifery	643	697	653	680	683	-44	+31	+4	-13	+40	-1.9%	817
<i>Dietitians</i>	2		2	2	2	+2	+1	+0	+2	+2	-100.0%	2
<i>Occupational Therapists</i>	17	13	10	12	12	-3	+2	+0	-1	-1	-5.6%	13
<i>Physiotherapists</i>	15	16	13	9	9	-3	-3	+0	-6	-6	-39.7%	11
<i>Podiatrists & Chiropodists</i>	6	2	1	1	1	-0	-1	+0	-1	-1	-36.2%	1
<i>Speech & Language Therapists</i>	4	6	4	3	3	-2	-1	+0	-3	-3	-46.5%	4
Therapy Professions	44	37	30	27	28	-7	-2	+1	-9	-16	-23.3%	31
Health Science/ Diagnostics	1	1	1	1	1	+0	+0	+0	+0	+0	+0.0%	2
Social Care	2	1	1	1	1	+0	+0	+0	+0	-0	+0.8%	2
Social Workers	10	9				-9			-9	-10	-100.0%	
Pharmacy	3	5	4	4	5	-0	+0	+1	+0	+2	+6.0%	10
H&SC, Other			5	4	3	+5	-1	-1	+3	+3	-100.0%	4
Health & Social Care Professionals	60	53	41	38	39	-12	-3	+0	-14	-21	-26.9%	49
Management (VIII & above)	13	19	20	16	16	+1	-3	-0	-3	+4	-14.5%	17
Administrative/ Supervisory (V to VII)	17	29	39	47	47	+9	+8	+0	+17	+30	+58.6%	49
Clerical (III & IV)	128	130	128	127	128	-2	-0	+0	-2	-1	-1.6%	150
Management & Administrative	158	178	186	190	191	+8	+4	+1	+12	+33	+6.9%	216
Support	101	124	120	116	115	-3	-5	-1	-9	+14	-7.1%	129
Maintenance/ Technical	6	5	3	3	3	-2	+0	+0	-2	-3	-40.0%	3
General Support	107	129	123	119	118	-5	-5	-1	-11	+11	-8.4%	132
Home Help	1,113	1,068	932	909	909	-136	-23	+1	-158	-204	-14.8%	1,396
Health Care Assistants	781	814	753	768	767	-61	+14	-1	-48	-14	-5.8%	899
Care, other	31	34	37	37	37	+3	+0	-0	+3	+7	+10.2%	48
Patient & Client Care	1,925	1,916	1,722	1,714	1,714	-194	-9	-0	-202	-212	-10.6%	2,343



Older People Employment Report by Grade Group: OCT 2024

CHO 5

OCT 2024	WTE DEC 2019	WTE DEC 2022	WTE DEC 2023	WTE SEP 2024	WTE OCT 2024	WTE Change 2023	WTE Change 2024	WTE Change SEP 2024	WTE Change Dec 2022 to OCT 2024	WTE Change Dec 2019 to OCT 2024	% WTE Change Dec 2022 to OCT 2024	No. OCT 2024
Overall	1653	1641	1733	1653	1649	+92	-84	-3	+8	-4	+0.5%	1,995
Medical/ Dental, other	9	15	13	12	12	-1	-1	+0	-3	+3	-18.2%	16
Medical & Dental	9	15	13	12	12	-1	-1	+0	-3	+3	-18.2%	16
Nurse/ Midwife Manager	83	76	99	91	92	+23	-7	+1	+15	+8	+20.0%	99
Nurse/ Midwife Specialist & AN/MP	2	12	18	16	16	+6	-1	+1	+5	+14	+41.7%	17
Staff Nurse/ Staff Midwife	313	299	318	308	305	+19	-13	-3	+6	-9	+2.0%	355
Public Health Nurse	5	1	1	1	1	+0	+0	+0	+0	-4	+1.0%	1
<i>Nursing/ Midwifery awaiting registration</i>			2			+2	-2				-100.0%	
Nursing/ Midwifery Student			2			+2	-2				-100.0%	
Nursing & Midwifery	403	388	437	415	414	+50	-24	-2	+26	+10	+6.8%	472
<i>Dietitians</i>	4	4	4	4	5	+0	+0	+0	+0	+0	+3.4%	5
<i>Occupational Therapists</i>	13	11	15	16	15	+5	-0	-1	+4	+4	+40.5%	17
<i>Physiotherapists</i>	21	14	15	17	17	+1	+2	+1	+3	+3	+21.4%	21
<i>Podiatrists & Chiropodists</i>	0										-100.0%	
<i>Speech & Language Therapists</i>	3	1	4	3	3	+2	-0	+0	+2	+2	+175.0%	4
Therapy Professions	41	31	39	41	41	+8	+2	+0	+10	-0	+31.7%	47
Social Workers	3	4	5	5	5	+1	-0	+0	+1	+1	+20.4%	5
Psychologists		1	2	1	1	+0	-0	+0	+0	+1	+2.1%	2
Pharmacy		1	1	1	1	-0	-0	+0	-0	+1	-15.8%	1
H&SC, Other		2	6	4	4	+4	-2	-0	+2	+4	+91.3%	4
Health & Social Care Professionals	44	39	52	51	51	+13	-1	-0	+12	+7	+31.2%	59
Management (VIII & above)	4	11	11	12	12	+0	+1	+0	+1	+8	+10.4%	12
Administrative/ Supervisory (V to VII)	17	16	16	17	18	-0	+1	+0	+1	+1	+7.9%	18
Clerical (III & IV)	31	60	61	54	55	+0	-6	+1	-5	+24	-8.5%	61
Management & Administrative	52	87	88	83	85	+0	-3	+2	-3	+33	-3.1%	91
Support	91	75	62	53	55	-13	-7	+2	-20	-36	-26.2%	68
Maintenance/ Technical	5	4	4	4	4	-0	+0	+0	-0	-1	-4.1%	5
General Support	96	79	66	57	59	-13	-7	+2	-20	-37	-25.1%	73
Home Help	614	612	609	592	593	-3	-16	+1	-19	-21	-3.0%	788
Health Care Assistants	427	404	441	417	410	+37	-30	-7	+6	-16	+1.5%	469
Care, other	9	18	28	25	25	+10	-3	+0	+7	+16	+41.5%	27
Patient & Client Care	1,049	1,034	1,078	1,034	1,029	+44	-49	-5	-5	-21	-0.5%	1,284



Older People Employment Report by Grade Group: OCT 2024

CHO 6

OCT 2024	WTE DEC 2019	WTE DEC 2022	WTE DEC 2023	WTE SEP 2024	WTE OCT 2024	WTE Change 2023	WTE Change 2024	WTE Change SEP 2024	WTE Change Dec 2022 to OCT 2024	WTE Change Dec 2019 to OCT 2024	% WTE Change Dec 2022 to OCT 2024	No. OCT 2024
Overall	823	813	858	841	836	+46	-22	-5	+23	+13	+2.9%	909
Consultants				1	1		+1	+0	+1	+1	-100.0%	1
Registrars	1	1	1	1	1	+0	+0	+0	+0	+0	+0.0%	1
Medical/ Dental, other	4	2	3	2	2	+1	-1	+0	-0	-2	-6.9%	3
Medical & Dental	5	3	4	4	4	+1	+0	+0	+1	-1	+30.1%	5
Nurse/ Midwife Manager	68	64	76	73	73	+12	-2	+0	+10	+5	+15.6%	75
Nurse/ Midwife Specialist & AN/MP	1		9	9	6	+9	-3	-3	+6	+5	-100.0%	7
Staff Nurse/ Staff Midwife	204	206	205	207	205	-0	-1	-2	-1	+1	-0.5%	215
Nursing & Midwifery	273	269	290	289	284	+21	-6	-5	+15	+11	+5.6%	297
Dietitians	3	2	3	3	4	+0	+1	+0	+1	+1	+50.0%	5
Occupational Therapists	19	17	19	20	21	+2	+2	+0	+4	+4	+22.6%	23
Physiotherapists	21	19	26	22	21	+7	-4	-0	+3	+3	+15.0%	23
Podiatrists & Chiropodists	1	0	0	0	0	+0	+0	+0	+0	+0	+0.0%	1
Speech & Language Therapists	6	4	6	5	5	+2	-1	+0	+1	+1	+22.3%	6
Therapy Professions	50	42	54	51	51	+11	-2	+0	+9	+1	+20.7%	58
Social Workers	11	7	6	7	6	-1	+0	-1	-1	-6	-17.8%	7
Psychologists	2		1	1	1	+1	+0	+0	+1	-2	-100.0%	1
Pharmacy	3	4	4	5	5	+0	+0	-0	+1	+2	+13.8%	5
H&SC, Other			1	1	1	+1	+0	+0	+1	+1	-100.0%	1
Health & Social Care Professionals	66	53	65	64	63	+12	-2	-1	+10	-3	+18.2%	72
Management (VIII & above)	4	8	12	12	13	+4	+1	+1	+5	+9	+65.5%	13
Administrative/ Supervisory (V to VII)	22	32	39	33	33	+7	-5	+0	+1	+11	+4.7%	35
Clerical (III & IV)	30	33	31	29	28	-2	-3	-1	-5	-1	-14.6%	32
Management & Administrative	56	72	82	74	74	+9	-7	+0	+2	+19	+2.5%	80
Support	108	102	109	106	107	+7	-3	+0	+4	-2	+4.3%	115
Maintenance/ Technical	8	7	8	9	9	+1	+1	+0	+2	+1	+21.5%	9
General Support	116	110	117	115	116	+8	-2	+0	+6	-1	+5.4%	124
Health Care Assistants	300	299	296	291	291	-4	-5	-0	-9	-9	-2.9%	324
Care, other	7	6	5	5	5	-1	+0	+0	-1	-3	-22.5%	7
Patient & Client Care	307	305	300	295	295	-5	-5	-0	-10	-12	-3.3%	331



Older People Employment Report by Grade Group: OCT 2024

CHO 7

OCT 2024	WTE DEC 2019	WTE DEC 2022	WTE DEC 2023	WTE SEP 2024	WTE OCT 2024	WTE Change 2023	WTE Change 2024	WTE Change SEP 2024	WTE Change Dec 2022 to OCT 2024	WTE Change Dec 2019 to OCT 2024	% WTE Change Dec 2022 to OCT 2024	No. OCT 2024
Overall	996	999	1025	1048	1046	+26	+21	-2	+47	+50	+4.7%	1,166
SHO/ Interns	2	2	2	2	2	+0	+0	+0	+0	+0	+1.0%	2
Medical/ Dental, other	4	2	1	1	1	-1	+0	+0	-1	-3	-32.0%	2
Medical & Dental	6	4	3	3	3	-1	+0	+0	-1	-3	-15.7%	4
Nurse/ Midwife Manager	77	88	101	109	109	+13	+8	-0	+20	+32	+23.0%	111
Nurse/ Midwife Specialist & AN/MP	3	6	7	6	7	+1	-0	+1	+1	+4	+14.3%	7
Staff Nurse/ Staff Midwife	219	239	216	213	214	-22	-2	+1	-24	-5	-10.3%	230
<i>Nursing/ Midwifery awaiting registration</i>		1	1	1	1	+0	+0	+0	+0	+0	+2.0%	1
Nursing/ Midwifery Student		1	1	1	1	+0	+0	+0	+0	+1	+2.0%	1
Nursing & Midwifery	299	334	325	329	331	-9	+5	+1	-3	+32	-1.0%	349
<i>Dietitians</i>	1	2	1	1	1	-1	+1	+0	-0	-0	-11.9%	2
<i>Occupational Therapists</i>	4	5	6	4	4	+1	-2	+0	-1	-1	-20.2%	5
<i>Physiotherapists</i>	9	10	9	10	9	-1	+0	-0	-1	-1	-8.0%	10
<i>Podiatrists & Chiropodists</i>			1	0		+1	-1	-0			-100.0%	
<i>Speech & Language Therapists</i>		1	2	1	1	+1	-1	+0	+0	+0	+1.0%	1
Therapy Professions	14	18	18	16	16	+1	-3	-1	-2	+2	-11.5%	18
Social Workers	11	5	5	5	5	-0	+0	-0	+0	-6	+1.6%	5
Pharmacy	3	3	3	3	3	+0	+0	+0	+0	+1	+1.0%	3
H&SC, Other	1	1	2	2	2	+1	+0	+0	+1	+1	+51.5%	2
Health & Social Care Professionals	28	27	28	26	25	+1	-2	-1	-1	-3	-5.4%	28
Management (VIII & above)	5	12	5	5	5	-7	-0	+0	-7	-0	-57.7%	5
Administrative/ Supervisory (V to VII)	12	20	18	16	17	-1	-1	+1	-3	+5	-14.2%	18
Clerical (III & IV)	34	42	46	47	47	+4	+1	+0	+5	+13	+12.0%	51
Management & Administrative	51	74	69	68	69	-4	-0	+1	-5	+18	-6.1%	74
Support	110	104	106	107	107	+2	+1	-0	+3	-3	+3.0%	119
Maintenance/ Technical	2	2	2	3	3	+0	+1	+0	+1	+1	+51.5%	3
General Support	112	106	108	110	110	+2	+2	-0	+4	-2	+3.9%	122
Home Help	108	117	133	132	130	+17	-3	-1	+14	+23	+11.7%	162
Health Care Assistants	388	332	350	371	370	+18	+19	-2	+37	-18	+11.3%	419
Care, other	5	6	8	8	8	+2	+0	+0	+2	+3	+34.2%	8
Patient & Client Care	500	455	492	511	508	+37	+16	-3	+53	+8	+11.7%	589



Older People Employment Report by Grade Group: OCT 2024

CHO 8

OCT 2024	WTE DEC 2019	WTE DEC 2022	WTE DEC 2023	WTE SEP 2024	WTE OCT 2024	WTE Change 2023	WTE Change 2024	WTE Change SEP 2024	WTE Change Dec 2022 to OCT 2024	WTE Change Dec 2019 to OCT 2024	% WTE Change Dec 2022 to OCT 2024	No. OCT 2024
Overall	1488	1489	1540	1502	1503	+50	-37	+1	+13	+14	+0.9%	1,859
Medical/ Dental, other	11	11	11	10	10	+0	-0	+0	-0	-0	-2.3%	17
Medical & Dental	11	11	11	10	10	+0	-0	+0	-0	-0	-2.3%	17
Nurse/ Midwife Manager	77	86	89	85	83	+2	-6	-2	-3	+6	-4.0%	89
Nurse/ Midwife Specialist & AN/MP	2	4	6	8	8	+2	+2	+0	+4	+6	+97.0%	8
Staff Nurse/ Staff Midwife	249	255	262	272	278	+7	+16	+6	+23	+29	+9.0%	311
Public Health Nurse	2	2	3	3	3	+1	-1	-0	+0	+0	+16.2%	3
Nursing/ Midwifery Student					2		+2	+2	+2	+2	-100.0%	2
Nursing/ Midwifery other		2	2	1	1	-0	-1	+0	-1	+1	-52.0%	1
Nursing & Midwifery	330	350	362	369	374	+12	+12	+5	+24	+44	+6.9%	414
<i>Dietitians</i>	1	3	4	4	4	+1	-0	-0	+1	+1	+25.4%	4
<i>Occupational Therapists</i>	9	7	7	8	8	-1	+1	-0	+0	+0	+3.4%	10
<i>Physiotherapists</i>	8	11	12	13	13	+1	+1	-0	+2	+2	+16.1%	15
<i>Podiatrists & Chiropodists</i>	1										-100.0%	
<i>Speech & Language Therapists</i>	2	5	8	8	8	+3	+0	+0	+3	+3	+67.9%	9
Therapy Professions	21	26	30	32	32	+4	+2	-0	+6	+11	+22.9%	38
Health Science/ Diagnostics		1	1	1	1	-0	+0	+0	-0	+1	-1.0%	1
Social Workers	7	1	1	1	1	+0	-0	-0	+0	-5	+43.4%	2
Pharmacy	3	2	2	2	2	+0	+0	+0	+0	-0	+10.2%	3
Health & Social Care Professionals	30	30	34	36	36	+4	+2	-0	+7	+7	+22.0%	44
Management (VIII & above)	6	9	10	10	10	+1	+0	-0	+1	+4	+9.8%	10
Administrative/ Supervisory (V to VII)	20	31	35	25	25	+4	-10	-0	-6	+5	-19.8%	26
Clerical (III & IV)	70	65	87	75	75	+22	-12	-0	+10	+5	+15.1%	83
Management & Administrative	95	105	132	110	110	+27	-22	-1	+4	+14	+4.3%	119
Support	26	26	30	28	28	+4	-2	-1	+2	+2	+7.4%	30
Maintenance/ Technical	24	22	25	25	25	+3	-0	+0	+2	+1	+11.1%	25
General Support	50	48	54	53	53	+6	-2	-1	+4	+3	+9.1%	55
Home Help	395	393	400	392	387	+6	-12	-5	-6	-8	-1.6%	586
Health Care Assistants	556	517	517	489	488	-1	-29	-1	-29	-68	-5.6%	569
Care, other	20	35	30	42	44	-5	+14	+2	+9	+24	+26.2%	55
Patient & Client Care	972	946	946	923	919	+1	-27	-3	-26	-53	-2.8%	1,210



Older People Employment Report by Grade Group: OCT 2024

CHO 9

OCT 2024	WTE DEC 2019	WTE DEC 2022	WTE DEC 2023	WTE SEP 2024	WTE OCT 2024	WTE Change 2023	WTE Change 2024	WTE Change SEP 2024	WTE Change Dec 2022 to OCT 2024	WTE Change Dec 2019 to OCT 2024	% WTE Change Dec 2022 to OCT 2024	No. OCT 2024
Overall	870	976	1001	988	986	+25	-15	-2	+10	+116	+1.0%	1,101
Consultants	2	3	3	2	3	+0	+0	+1	+0	+1	+6.8%	4
Registrars	6	6	8	9	9	+1	+1	+0	+2	+3	+31.5%	10
SHO/ Interns	12	8	13	15	13	+5	+0	-2	+5	+1	+65.6%	15
Medical/ Dental, other	1									-1	-100.0%	
Medical & Dental	20	17	23	25	25	+6	+2	-1	+8	+4	+44.0%	29
Nurse/ Midwife Manager	75	79	85	88	88	+6	+3	-0	+9	+13	+10.9%	93
Nurse/ Midwife Specialist & ANMP	5	11	12	14	15	+1	+2	+1	+3	+10	+28.2%	16
Staff Nurse/ Staff Midwife	227	255	249	252	250	-6	+1	-2	-4	+23	-1.8%	270
Public Health Nurse	0	1				-1			-1	-0	-100.0%	
Nursing/ Midwifery other	1									-1	-100.0%	
Nursing & Midwifery	308	346	347	354	352	+1	+6	-2	+6	+45	+1.8%	379
<i>Dietitians</i>	6	10	11	10	10	+1	-1	+0	-0	-0	-0.5%	12
<i>Occupational Therapists</i>	19	29	26	27	27	-3	+2	+1	-1	-1	-4.6%	29
<i>Physiotherapists</i>	25	42	45	36	35	+4	-11	-2	-7	-7	-16.8%	40
<i>Speech & Language Therapists</i>	4	8	8	12	12	+0	+5	+0	+5	+5	+62.4%	14
Therapy Professions	54	88	89	85	84	+1	-5	-1	-4	+30	-4.2%	95
Health Science/ Diagnostics	1	1	1	1	1	+0	+0	+0	+0	-0	+10.0%	2
Social Care	1	1	0	0	0	-1	+0	+0	-1	-1	-61.6%	1
Social Workers	21	19	17	17	17	-2	+1	-0	-2	-4	-8.2%	20
Psychologists		1	1	1	1	-0	+0	+0	-0	+1	-21.9%	1
Pharmacy	3	4	4	4	4	+0	+1	+0	+1	+1	+14.3%	6
H&SC, Other	0	1	3	4	4	+3	+1	+0	+3	+3	+537.5%	4
Health & Social Care Professionals	81	114	115	112	112	+1	-4	-0	-3	+30	-2.2%	129
Management (VIII & above)	9	13	14	12	12	+1	-2	+0	-1	+3	-6.0%	12
Administrative/ Supervisory (V to VII)	15	27	27	31	30	+0	+3	-1	+3	+15	+10.8%	33
Clerical (III & IV)	40	56	58	57	56	+3	-2	-1	+0	+16	+0.3%	64
Management & Administrative	64	96	100	100	98	+4	-2	-2	+2	+34	+2.4%	109
Support	118	119	111	107	108	-8	-3	+1	-11	-10	-9.4%	124
Maintenance/ Technical	2	2	2	2	2	+0	+0	+0	+0	+0	+0.0%	3
General Support	121	122	114	110	110	-8	-3	+1	-11	-10	-9.2%	127
Health Care Assistants	270	275	296	282	283	+21	-12	+2	+8	+14	+3.1%	321
Care, other	6	6	7	5	5	+0	-1	-0	-1	-1	-18.8%	7
Patient & Client Care	276	281	302	287	289	+21	-14	+2	+7	+13	+2.6%	328



Older People Employment Report by Grade Group: OCT 2024

other Community Services

OCT 2024	WTE DEC 2019	WTE DEC 2022	WTE DEC 2023	WTE SEP 2024	WTE OCT 2024	WTE Change 2023	WTE Change 2024	WTE Change SEP 2024	WTE Change Dec 2022 to OCT 2024	WTE Change Dec 2019 to OCT 2024	% WTE Change Dec 2022 to OCT 2024	No. OCT 2024
Overall	74	95	128	122	122	+32	-5	+0	+27	+48	+28.3%	131
Nurse/ Midwife Manager		2	3	3	3	+1	+0	+0	+1	+3	+50.0%	3
Nursing & Midwifery		2	3	3	3	+1	+0	+0	+1	+3	+50.0%	3
Health Science/ Diagnostics	1									-1	-100.0%	
Social Care			1	1	1	+1	-0	-0	+1	+1	-100.0%	1
Health & Social Care Professionals	1		1	1	1	+1	-0	-0	+1	-0	-100.0%	1
Management (VIII & above)	19	19	27	21	21	+7	-6	-0	+2	+2	+7.8%	21
Administrative/ Supervisory (V to VII)	23	40	42	41	41	+2	-0	+0	+2	+18	+3.8%	45
Clerical (III & IV)	31	33	54	55	55	+21	+1	+0	+22	+24	+67.5%	60
Management & Administrative	73	92	123	117	117	+31	-5	+0	+25	+44	+27.4%	126
Health Care Assistants	0	0				-0			-0	-0	-100.0%	
Care, other		1	1	1	1	+0	+0	+0	+0	+1	+1.2%	1
Patient & Client Care	0	1	1	1	1	-0	+0	+0	-0	+1	-22.3%	1



Older People Employment Report by Grade Group: OCT 2024

OCT 2024	WTE DEC 2019	WTE DEC 2022	WTE DEC 2023	WTE SEP 2024	WTE OCT 2024	WTE Change 2023	WTE Change 2024	WTE Change SEP 2024	WTE Change Dec 2022 to OCT 2024	WTE Change Dec 2019 to OCT 2024	% WTE Change Dec 2022 to OCT 2024	No. OCT 2024
Overall	13,239	13,947	14,154	13,975	13,962	+207	-192	-13	+15	+723	0.11%	16,804
Consultant Medicine	4	7	5	5	6	-1	+1	+1	-1	+2	-8.84%	9
Consultants	4	7	5	5	6	-1	+1	+1	-1	+2	-8.84%	9
Registrar	7	6	9	12	11	+2	+3	-1	+5	+5	70.17%	12
Senior Registrar	1	1	1	1	1	-0	+0	+0	-0	+0	-3.85%	1
Specialist Registrar	2	2	1	2	2	-1	+1	+0	+0	+0	0.50%	3
Registrars	10	10	11	15	14	+1	+4	-1	+5	+5	47.47%	16
Senior House Officer	15	12	18	21	19	+6	+1	-2	+7	+4	60.98%	21
SHO/ Interns	15	12	18	21	19	+6	+1	-2	+7	+4	60.98%	21
Other Medical	95	98	85	77	77	-14	-8	-0	-21	-18	-21.70%	148
Medical/ Dental, other	95	98	85	77	77	-14	-8	-0	-21	-18	-21.70%	148
Medical & Dental	124	126	118	117	116	-8	-2	-1	-10	-7	-7.97%	194
Clinical Nurse/ Midwife Manager 1	176	151	161	184	180	+11	+19	-3	+30	+4	19.85%	190
Clinical Nurse/ Midwife Manager 2	314	365	393	391	391	+28	-2	-1	+25	+77	6.95%	416
Clinical Nurse/ Midwife Manager 3	21	18	23	24	24	+5	+1	-0	+6	+3	35.21%	25
Director Nursing/Midwifery, Assistant	102	106	129	112	114	+23	-14	+2	+9	+13	8.31%	121
Director of Nursing/Midwifery	98	98	105	102	103	+7	-2	+1	+5	+5	4.88%	106
Nurse/ Midwife Manager	711	738	811	813	813	+73	+2	-1	+75	+102	10.18%	858
Advanced Nurse/ Midwife Practitioner	4	23	28	30	30	+5	+3	+0	+8	+26	33.73%	31
Adv. Nurse/ Midwife, Candidate	7	17	28	23	21	+11	-6	-2	+5	+15	29.43%	23
Clinical Nurse/ Midwife Specialist	16	35	55	57	57	+20	+2	-0	+22	+41	62.28%	61
Nurse/ Midwife Specialist & AN/MP	26	74	111	110	109	+36	-2	-1	+34	+82	46.30%	115
Staff Midwives		1	2	2	2	+1	+0	+0	+1	+2	95.24%	2
Staff Nurse [Intellectual Disability]		3	2	3	2	-1	+0	-1	-1	+2	-33.11%	2
Staff Nurse [Psychiatric]	4	4	4	4	4	-0	+0	+0	+0	+1	2.54%	5
Staff Nurses [General/ Children's]	2,571	2,729	2,692	2,713	2,710	-37	+18	-3	-19	+139	-0.69%	3,085
Staff Nurse/ Staff Midwife	2,575	2,737	2,700	2,722	2,718	-38	+19	-4	-19	+143	-0.69%	3,094
Public Health Nurse	14	13	11	11	9	-1	-2	-2	-4	-5	-28.73%	10
Public Health Nurse	14	13	11	11	9	-1	-2	-2	-4	-5	-28.73%	10
Nursing/ Midwifery awaiting registration	1	1	7	2	4	+7	-3	+2	+3	+3	308.16%	6
Post-registration Nurse/ Midwife Student	1									-1	-100.00%	
Nursing/ Midwifery Student	2	1	7	2	4	+7	-3	+2	+3	+2	308.16%	6
Nursing Education/Clinical	1	3	3	2	2	-0	-1	+0	-1	+1	-34.67%	2
Nursing/ Midwifery other	1	3	3	2	2	-0	-1	+0	-1	+1	-34.67%	2
Nursing & Midwifery	3329	3566	3643	3660	3655	+77	+12	-5	+89	+325	2.49%	4,085
Dietitians	16	25	30	32	33	+5	+2	+1	+7	+16	29.64%	38
Occupational Therapists	113	125	144	141	141	+19	-3	-0	+16	+27	12.47%	156
Physiotherapists	123	152	163	149	147	+11	-16	-2	-5	+24	-3.29%	168
Podiatrists & Chiropodists	12	3	5	5	5	+1	+0	-0	+1	-7	42.69%	6
Speech & Language Therapists	23	34	43	43	41	+9	-2	-1	+7	+18	21.72%	49
Therapy Professions	288	340	385	370	367	+45	-18	-3	+27	+79	7.91%	417
Clinical Engineering		1	1	1	1	-0	+0	+0	-0	+1	-1.00%	1
Radiographers	6	4	4	4	4	+0	-0	+0	+0	-2	0.28%	6
Vascular Physiologists	0	0	0	0	0	+0	+0	+0	+0	-0	0.00%	1
Health Science/ Diagnostics	6	5	5	5	5	-0	+0	+0	+0	-1	0.00%	8
Social Care	3	2	3	3	3	+0	-0	-0	+0	-0	17.26%	4
Social Care	3	2	3	3	3	+0	-0	-0	+0	-0	17.26%	4
Social Workers	98	69	52	51	51	-18	-1	+0	-18	-47	-26.20%	58
Social Workers	98	69	52	51	51	-18	-1	+0	-18	-47	-26.20%	58
Psychologists	2	4	4	4	4	+0	+0	+0	+1	+2	22.00%	6
Psychologists	2	4	4	4	4	+0	+0	+0	+1	+2	22.00%	6
Pharmacists	13	14	14	14	15	+0	+1	+1	+1	+2	6.25%	23
Pharmacy Technicians	3	5	6	6	6	+0	+1	+0	+1	+4	9.89%	7
Pharmacy	15	20	20	20	21	+0	+1	+1	+1	+6	7.27%	30
Other Health & Social Care	0	2	24	21	22	+22	-3	+0	+19	+21	804.60%	24

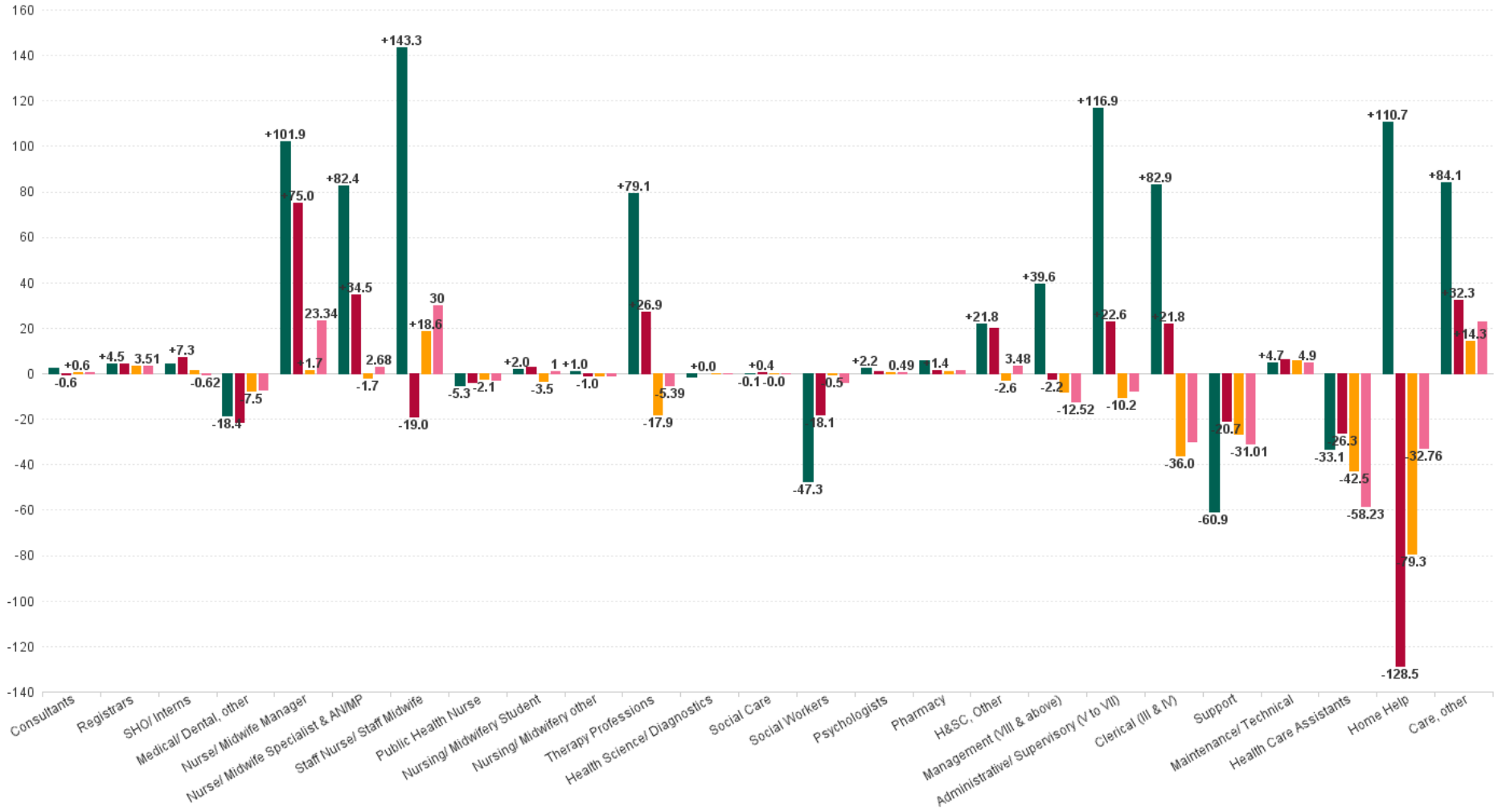


OCT 2024	WTE DEC 2019	WTE DEC 2022	WTE DEC 2023	WTE SEP 2024	WTE OCT 2024	WTE Change 2023	WTE Change 2024	WTE Change SEP 2024	WTE Change Dec 2022 to OCT 2024	WTE Change Dec 2019 to OCT 2024	% WTE Change Dec 2022 to OCT 2024	No. OCT 2024
Overall	13,239	13,947	14,154	13,975	13,962	+207	-192	-13	+15	+723	0.11%	16,804
Play Therapists/ Specialists	1	1	2	2	2	+1	+0	+0	+1	+1	51.52%	2
H&SC, Other	1	3	26	23	23	+22	-3	+0	+20	+22	584.02%	26
Health & Social Care Professionals	414	443	493	475	474	+50	-19	-1	+31	+60	7.02%	549
CEO/Chief Officer	1	2	1			-1	-1		-2	-1	-100.00%	
General Managers	21	26	34	30	30	+8	-4	-0	+4	+9	13.87%	30
National Director	1	1	1	1	1	+0	+0	+0	+0	+0	0.00%	1
National Director, Assistant	4	5	5	3	3	+0	-2	+0	-2	-1	-39.64%	3
Other Executives	6	6	10	10	10	+4	-0	-0	+4	+4	67.45%	10
VIII	42	76	72	70	71	-5	-1	+1	-6	+29	-7.61%	72
Management (VIII & above)	75	116	122	114	114	+6	-8	+1	-2	+40	-1.85%	116
Middle Management (V-VII)	168	263	296	285	285	+33	-10	+0	+23	+118	8.60%	302
Other Administrative	1									-1	-100.00%	
Administrative/ Supervisory (V to VII)	169	263	296	285	285	+33	-10	+0	+23	+117	8.60%	302
General Administrative (III & IV)	570	631	689	651	653	+58	-36	+2	+22	+83	3.45%	741
Clerical (III & IV)	570	631	689	651	653	+58	-36	+2	+22	+83	3.45%	741
Management & Administrative	813	1010	1107	1050	1053	+96	-54	+3	+42	+239	4.18%	1,159
Catering	223	217	341	384	392	+124	+51	+8	+175	+170	80.50%	451
Household Services	461	441	319	265	255	-123	-64	-10	-186	-206	-42.20%	291
Other Support	32	27	22	18	19	-5	-4	+0	-9	-13	-31.87%	22
Portering	81	71	80	69	70	+9	-10	+1	-1	-11	-0.94%	74
Support	797	757	762	736	736	+6	-27	-1	-21	-61	-2.74%	838
Maintenance	95	90	90	97	96	+0	+6	-1	+6	+1	6.68%	101
Technical Services		4	4	4	4	+0	+0	+0	+0	+4	0.00%	4
Maintenance/ Technical	95	94	94	101	100	+0	+6	-1	+6	+5	6.40%	105
General Support	892	851	857	837	836	+6	-21	-1	-15	-56	-1.73%	943
Home Helps	3,448	3,687	3,638	3,558	3,558	-49	-79	+1	-129	+111	-3.49%	4,969
Home Help	3,448	3,687	3,638	3,558	3,558	-49	-79	+1	-129	+111	-3.49%	4,969
Attendant/ Aide	2,328	1,632	1,531	1,394	1,387	-101	-144	-8	-245	-942	-15.03%	1,620
Health Care Assistant/ Care Assistant	1,729	2,378	2,470	2,575	2,576	+93	+105	+1	+198	+847	8.34%	2,933
Health & Social Care Assistants	22	63	87	84	84	+24	-4	-1	+21	+61	32.81%	88
Health Care Assistants	4,079	4,072	4,089	4,053	4,046	+16	-43	-7	-26	-33	-0.65%	4,641
Home Care Services	84	143	164	182	182	+21	+18	+0	+39	+98	27.15%	191
Other Care Grades	22	23	21	22	22	-2	+1	+0	-1	+0	-2.31%	29
Pastoral Care	32	23	22	19	18	-1	-4	-1	-5	-14	-22.72%	41
Workshop Services	2	4	4	2	3	+0	-1	+1	-1	+1	-23.97%	3
Care, other	140	192	210	225	224	+18	+14	-0	+32	+84	16.78%	264
Patient & Client Care	7667	7951	7936	7836	7829	-15	-107	-7	-123	+162	-1.54%	9,874



WTE Change by Staff Category

■ WTE change since DEC 2019 ■ WTE change since DEC 2022 ■ WTE change since DEC 2023 ■ WTE change since OCT 2023



Older People Employment Report by WTE, Headcount, Gender, Full-Time / Part-Time etc. OCT 2024

OCT 2024	WTE OCT 2024	No. OCT 2024	WTE : No	% Male	% Female	Male WTE : No.	Female WTE : No	Perm Count %	Perm Count Male %	Perm Count Female %	Fulltime Count %	Part time Count %	FT Count Male %	FT Count Female %
Total	13,962	16,804	1:0.8	14.70%	85.30%	1:0.9	1:0.8	90.90%	13.08%	77.82%	53.33%	46.67%	76.53%	49.33%
Consultants	5.98	9	1:0.7	22.22%	77.78%	1:0.5	1:0.7	77.78%	11.11%	66.67%	44.44%	55.56%		57.14%
Medical/ Dental, other	76.99	148	1:0.5	58.11%	41.89%	1:0.5	1:0.5	62.16%	33.78%	28.38%	26.35%	73.65%	23.26%	30.65%
Registrars	11.01	12	1:0.9	50.00%	83.33%	1:0.9	1:0.9	41.67%	16.67%	25.00%	125.00%	8.33%	100.00%	90.00%
SHO/ Interns	19.35	21	1:0.9	61.90%	38.10%	1:1	1:0.8	9.52%	9.52%		100.00%		100.00%	100.00%
Registrars	3	4	1:0.8	150.00%	250.00%	1:0.9	1:0.9	125.00%	50.00%	75.00%	375.00%	25.00%	100.00%	90.00%
Medical & Dental	116	194	1:0.6	55.15%	44.85%	1:0.6	1:0.6	54.64%	28.35%	26.29%	40.72%	59.28%	36.45%	45.98%
Nurse/ Midwife Specialist & AN/MP	51.67	54	1:1	14.81%	198.15%	1:0.9	1:1	198.15%	12.96%	185.19%	203.70%	9.26%	100.00%	95.33%
Nurse/ Midwife Manager	594.89	631	1:0.9	10.94%	125.04%	1:1	1:0.9	132.96%	10.62%	122.35%	119.02%	16.96%	95.65%	86.82%
Nurse/ Midwife Specialist & AN/MP	57.22	61	1:0.9	13.11%	175.41%	1:0.9	1:1	175.41%	11.48%	163.93%	180.33%	8.20%	100.00%	95.33%
Nurse/ Midwife Manager	217.68	227	1:1	30.40%	347.58%	1:1	1:0.9	369.60%	29.52%	340.99%	330.84%	47.14%	95.65%	86.82%
Nursing/ Midwifery other	1.96	2	1:1		100.00%	1:	1:1	100.00%		100.00%	100.00%			100.00%
Nursing/ Midwifery Student	4	6	1:0.7	16.67%	83.33%	1:1	1:0.6	16.67%	16.67%		100.00%		100.00%	100.00%
Public Health Nurse	8.93	10	1:0.9		100.00%	1:	1:0.9	100.00%		100.00%	60.00%	40.00%		60.00%
Staff Nurse/ Staff Midwife	2,718.26	3,094	1:0.9	9.21%	90.79%	1:0.9	1:0.9	91.18%	8.40%	82.77%	69.68%	30.32%	89.82%	67.64%
Nursing & Midwifery	3,655	4,085	1:0.9	8.89%	91.11%	1:1	1:0.9	92.53%	8.20%	84.33%	74.20%	25.80%	91.18%	72.54%
Health Science/ Diagnostics	0.99	1	1:1	200.00%	600.00%	1:0.8	1:0.5	700.00%	200.00%	500.00%	200.00%	600.00%	50.00%	16.67%
Therapy Professions	173.36	194	1:0.9	23.20%	191.75%	1:1	1:0.9	205.67%	22.68%	182.99%	167.53%	47.42%	95.56%	75.81%
H&SC, Other	21.62	24	1:0.9	12.50%	95.83%	1:0.8	1:0.9	108.33%	12.50%	95.83%	95.83%	12.50%	66.67%	91.30%
Pharmacy	20.95	30	1:0.7	23.33%	76.67%	1:0.6	1:0.7	83.33%	20.00%	63.33%	53.33%	46.67%	57.14%	52.17%
Therapy Professions	147.46	168	1:0.9	26.79%	221.43%	1:1	1:0.9	237.50%	26.19%	211.31%	193.45%	54.76%	95.56%	75.81%
H&SC, Other	1.5	2	1:0.8	150.00%	1,150.00%	1:0.8	1:0.9	1,300.00%	150.00%	1,150.00%	1,150.00%	150.00%	66.67%	91.30%
Therapy Professions	4.88	6	1:0.8	750.00%	6,200.00%	1:1	1:0.9	6,650.00%	733.33%	5,916.67%	5,416.67%	1,533.33%	95.56%	75.81%
Psychologists	4.27	6	1:0.7	16.67%	83.33%	1:0.5	1:0.8	100.00%	16.67%	83.33%	50.00%	50.00%		60.00%
Health Science/ Diagnostics	3.56	6	1:0.6	33.33%	100.00%	1:0.8	1:0.5	116.67%	33.33%	83.33%	33.33%	100.00%	50.00%	16.67%
Social Care	2.65	4	1:0.7	25.00%	75.00%	1:1	1:0.6	100.00%	25.00%	75.00%	25.00%	75.00%	100.00%	
Social Workers	51.05	58	1:0.9	10.34%	89.66%	1:1	1:0.9	91.38%	10.34%	81.03%	75.86%	24.14%	100.00%	73.08%
Therapy Professions	41.25	49	1:0.8	91.84%	759.18%	1:1	1:0.9	814.29%	89.80%	724.49%	663.27%	187.76%	95.56%	75.81%
Health Science/ Diagnostics	0.17	1	1:0.2	200.00%	600.00%	1:0.8	1:0.5	700.00%	200.00%	500.00%	200.00%	600.00%	50.00%	16.67%
Health & Social Care Professionals	474	549	1:0.9	11.84%	88.16%	1:0.9	1:0.9	94.72%	11.48%	83.24%	75.41%	24.59%	87.69%	73.76%
Clerical (III & IV)	653.12	741	1:0.9	10.12%	89.88%	1:1	1:0.9	92.44%	9.31%	83.13%	70.99%	29.01%	93.33%	68.47%
Management (VIII & above)	29.64	30	1:1	130.00%	256.67%	1:1	1:1	383.33%	126.67%	256.67%	383.33%	3.33%	100.00%	98.70%
Administrative/ Supervisory (V to VII)	285.39	302	1:0.9	15.89%	84.11%	1:1	1:0.9	98.68%	15.89%	82.78%	86.09%	13.91%	95.83%	84.25%
Management (VIII & above)	84.55	86	1:1	45.35%	89.53%	1:1	1:1	133.72%	44.19%	89.53%	133.72%	1.16%	100.00%	98.70%
Management & Administrative	1,053	1,159	1:0.9	13.98%	86.02%	1:1	1:0.9	94.74%	13.37%	81.36%	77.74%	22.26%	95.68%	74.82%
Support	647.33	742	1:0.9	37.47%	75.47%	1:0.9	1:0.8	101.89%	33.42%	68.46%	70.49%	42.45%	85.97%	50.71%
Maintenance/ Technical	96.11	101	1:1	102.97%	0.99%	1:1	1:1	101.98%	100.99%	0.99%	99.01%	4.95%	95.19%	100.00%
Support	88.49	96	1:0.9	289.58%	583.33%	1:0.9	1:0.8	787.50%	258.33%	529.17%	544.79%	328.13%	85.97%	50.71%
Maintenance/ Technical	4	4	1:1	2,600.00%	25.00%	1:1	1:1	2,575.00%	2,550.00%	25.00%	2,500.00%	125.00%	95.19%	100.00%
General Support	836	943	1:0.9	40.51%	59.49%	1:0.9	1:0.8	91.09%	37.12%	53.98%	66.07%	33.93%	88.48%	50.80%
Health Care Assistants	4,046.06	4,641	1:0.9	21.68%	78.32%	1:0.9	1:0.9	93.77%	19.93%	73.84%	60.59%	39.41%	83.20%	54.33%
Care, other	181.72	191	1:1	36.65%	101.57%	1:0.7	1:0.9	124.08%	24.61%	99.48%	105.76%	32.46%	58.57%	82.99%
Home Help	3,558.4	4,969	1:0.7	6.36%	93.64%	1:0.8	1:0.7	87.00%	5.39%	81.61%	18.09%	81.91%	29.43%	17.32%
Care, other	42.74	73	1:0.6	95.89%	265.75%	1:0.7	1:0.9	324.66%	64.38%	260.27%	276.71%	84.93%	58.57%	82.99%
Patient & Client Care	7,829	9,874	1:0.8	14.10%	85.90%	1:0.9	1:0.8	90.26%	12.56%	77.70%	39.63%	60.37%	69.76%	34.69%



OCT 2024	WTE OCT 2024	No. OCT 2024	WTE : No	% Male	% Female	Male WTE : No.	Female WTE : No	Perm Count %	Number Male %	Number Female %	Fulltime Count %	Part time Count %	FT Count Male %	FT Count Female %
Total	13,962	16,804	1:0.8	14.70%	85.30%	1:0.9	1:0.8	90.90%	13.08%	77.82%	53.33%	46.67%	76.53%	49.33%
CHO 1	2,234	2,629	1:0.8	13.20%	86.80%	1:0.9	1:0.8	80.56%	11.56%	69.00%	38.84%	61.16%	59.37%	35.71%
CHO 2	1,482	1,791	1:0.8	14.80%	85.20%	1:0.9	1:0.8	98.32%	14.07%	84.25%	56.39%	43.61%	84.91%	51.44%
CHO 3	1,331	1,608	1:0.8	14.05%	85.95%	1:0.9	1:0.8	93.35%	12.31%	81.03%	60.82%	39.18%	87.61%	56.44%
CHO 4	2,773	3,615	1:0.8	12.67%	87.33%	1:0.9	1:0.8	86.36%	10.10%	76.27%	38.20%	61.80%	64.19%	34.43%
CHO 5	1,649	1,995	1:0.8	10.58%	89.42%	1:0.9	1:0.8	97.64%	9.92%	87.72%	46.77%	53.23%	66.35%	44.45%
CHO 7	1,046	1,166	1:0.9	18.70%	81.30%	1:1	1:0.9	92.97%	16.55%	76.42%	72.90%	27.10%	89.91%	68.99%
CHO 8	1,503	1,859	1:0.8	12.80%	87.20%	1:0.9	1:0.8	91.77%	11.08%	80.69%	58.63%	41.37%	77.31%	55.89%
CHO 9	986	1,101	1:0.9	21.98%	78.02%	1:0.9	1:0.9	95.46%	21.16%	74.30%	76.93%	23.07%	87.19%	74.04%
CHO 6	836	909	1:0.9	25.96%	74.04%	1:0.9	1:0.9	94.39%	24.09%	70.30%	80.64%	19.36%	88.14%	78.01%
other Community Services	122	131	1:0.9	22.90%	77.10%	1:1	1:0.9	96.18%	22.90%	73.28%	90.08%	9.92%	96.67%	88.12%



Previous Month Summary

	% WTE change since SEP 2024	WTE change since SEP 2024	CHO 1	CHO 2	CHO 3	CHO 4	CHO 5	CHO 6	CHO 7	CHO 8	CHO 9	other Community Services
Total	-0.1%	-12.6	+8.5	-2.0	-11.3	+4.0	-3.5	-5.3	-1.7	+0.6	-2.2	+0.3
Consultants	+28.9%	+1.3			+0.7	+0.0		+0.0			+0.7	
Registrars	-3.4%	-0.5	+0.0		-0.5			+0.0			+0.0	
SHO/ Interns	-7.2%	-1.5			+0.0	+0.0			+0.0		-1.5	
Medical/ Dental, other	-0.3%	-0.2	-0.2	-0.1	-0.1	+0.1	+0.0	+0.0	+0.0	+0.0		
Medical & Dental	-0.7%	-0.9	-0.2	-0.1	+0.1	+0.1	+0.0	+0.0	+0.0	+0.0	-0.8	
Nurse/ Midwife Manager	-0.1%	-0.8	-0.3	+1.6	-0.1	-0.9	+1.0	+0.3	-0.3	-1.8	-0.4	+0.0
Nurse/ Midwife Specialist & AN/MP	-1.2%	-1.3	-0.1	-0.3	-0.2	-0.0	+0.7	-2.9	+0.5	+0.1	+0.9	
Staff Nurse/ Staff Midwife	-0.1%	-3.6	-3.9	-1.1	-1.7	+4.2	-3.4	-2.4	+0.9	+6.0	-2.2	
Public Health Nurse	-15.3%	-1.6	-1.0	-0.1		-0.1	+0.0			-0.5		
Nursing/ Midwifery Student	+100.0%	+2.0				+0.5			+0.0	+1.5		
Nursing/ Midwifery other	+0.0%	+0.0	+0.0							+0.0		
Nursing & Midwifery	-0.1%	-5.4	-5.3	+0.1	-2.0	+3.7	-1.8	-5.1	+1.1	+5.5	-1.7	+0.0
Therapy Professions	-0.8%	-3.0	+0.9	+0.1	-3.7	+0.6	+0.0	+0.5	-0.5	-0.2	-0.7	
Health Science/ Diagnostics	+1.1%	+0.1		+0.0	+0.0	+0.0				+0.1	+0.0	
Social Care	-0.4%	-0.0				+0.0					+0.0	-0.0
Social Workers	+0.1%	+0.0	+0.6	+0.5	+0.0		+0.0	-1.0	-0.0	-0.1	-0.0	
Psychologists	+4.4%	+0.2	+0.0		+0.0		+0.2	+0.0			+0.0	
Pharmacy	+5.3%	+1.1		+0.0	+0.0	+0.6	+0.0	-0.0	+0.0	+0.0	+0.5	
H&SC, Other	+1.6%	+0.4	+0.9	+0.5		-0.7	-0.3	+0.0	+0.0		+0.0	
Health & Social Care Professionals	-0.3%	-1.3	+2.4	+1.1	-3.7	+0.4	-0.1	-0.6	-0.5	-0.2	-0.2	-0.0
Management (VIII & above)	+0.5%	+0.6	+0.0	+0.0	+0.0	-0.0	+0.1	+0.8	+0.0	-0.1	+0.0	-0.2
Administrative/ Supervisory (V to VII)	+0.1%	+0.4	-0.2	+0.1	+0.0	+0.1	+0.1	+0.2	+0.8	-0.1	-1.2	+0.5
Clerical (III & IV)	+0.3%	+1.8	+2.8	-1.1	+0.1	+0.5	+1.4	-1.0	+0.1	-0.5	-0.6	+0.0
Management & Administrative	+0.3%	+2.8	+2.7	-1.0	+0.1	+0.5	+1.6	+0.1	+1.0	-0.7	-1.7	+0.3



Support	-0.1%	-0.7	-1.1	-1.0	-0.4	-0.6	+1.9	+0.4	-0.1	-0.7	+0.8	
Maintenance/ Technical	-0.5%	-0.5	+0.1	-0.4	-0.2	+0.0	+0.0	+0.0	+0.0	+0.0	+0.0	
General Support	-0.1%	-1.2	-1.0	-1.4	-0.6	-0.6	+1.9	+0.4	-0.1	-0.7	+0.8	
Health Care Assistants	-0.2%	-7.0	+5.0	+1.5	-5.1	-0.7	-6.8	-0.2	-1.8	-0.8	+1.8	
Home Help	+0.0%	+0.6	+6.3	-2.3	+1.0	+0.6	+1.2		-1.4	-4.7		
Care, other	-0.1%	-0.3	-1.2	+0.0	-1.3	-0.2	+0.4	+0.0	+0.0	+2.2	-0.3	+0.0
Patient & Client Care	-0.1%	-6.7	+10.0	-0.7	-5.3	-0.2	-5.2	-0.2	-3.3	-3.3	+1.5	+0.0



Year on Year Summary

	% WTE change since OCT 2023	WTE change since OCT 2023	CHO 1	CHO 2	CHO 3	CHO 4	CHO 5	CHO 6	CHO 7	CHO 8	CHO 9	other Community Services
Total	-0.7%	-98.0	+69.8	-107.3	+23.5	+51.0	-83.1	-22.5	+26.9	-39.4	-17.7	+1.0
Consultants	+7.6%	+0.4			-0.8	+0.0		+1.0			+0.2	
Registrars	+33.4%	+3.5	+1.0		+1.5			+0.0			+1.0	
SHO/ Interns	-3.1%	-0.6			+0.0	+1.0			+0.0		-1.6	
Medical/ Dental, other	-8.2%	-6.9	-1.0	-3.8	-0.2	+1.0	-1.6	-1.0	+0.0	-0.3		
Medical & Dental	-3.0%	-3.6	-0.0	-3.8	+0.6	+2.0	-1.6	+0.0	+0.0	-0.3	-0.4	
Nurse/ Midwife Manager	+3.0%	+23.3	+3.6	+5.2	-2.0	+11.0	-0.3	-1.8	+8.8	-4.4	+3.4	+0.0
Nurse/ Midwife Specialist & AN/MP	+2.5%	+2.7	+0.9	-1.3	+3.2	-1.1	-0.5	-2.9	+0.7	+2.8	+1.1	
Staff Nurse/ Staff Midwife	+1.1%	+30.0	+0.2	-4.1	-3.4	+48.0	-21.1	+0.3	-6.6	+19.4	-2.7	
Public Health Nurse	-25.0%	-3.0	-1.0	-0.1			-0.3	+0.0		-0.6	-1.0	
Nursing/ Midwifery Student	+33.3%	+1.0					+1.5	-2.0		+0.0	+1.5	
Nursing/ Midwifery other	-32.2%	-0.9	+0.0							-0.9		
Nursing & Midwifery	+1.5%	+53.1	+3.7	-0.2	-2.3	+59.1	-23.9	-4.5	+2.8	+17.7	+0.7	+0.0
Therapy Professions	-1.4%	-5.4	-1.1	+1.4	-6.1	-1.1	+1.2	-2.0	-2.2	+7.3	-2.8	
Health Science/ Diagnostics	-0.8%	-0.0		-0.1	+0.0	+0.0				+0.0	+0.1	
Social Care	-0.4%	-0.0				+0.0					+0.0	-0.0
Social Workers	-6.5%	-3.5	-1.8	+0.5	-1.0		-0.2	-1.0	-1.0	+0.5	+0.5	
Psychologists	+13.0%	+0.5	+0.5		+0.0		-0.1	+0.0			+0.0	
Pharmacy	+8.3%	+1.6		+0.0	+0.0	+0.4	-0.0	+0.8	+0.0	+0.0	+0.5	
H&SC, Other	+17.7%	+3.5	+0.6	+0.5		+1.5	-2.2	+0.0	+0.0		+3.0	
Health & Social Care Professionals	-0.7%	-3.4	-1.7	+2.2	-7.0	+0.8	-1.3	-2.2	-3.2	+7.7	+1.3	-0.0
Management (VIII & above)	-9.9%	-12.5	+0.0	-0.1	-1.2	-3.4	+0.1	+2.0	-1.3	-1.0	-2.0	-5.7
Administrative/ Supervisory (V to VII)	-2.6%	-7.7	-0.8	+0.4	-2.0	+8.1	+1.5	-4.2	-1.5	-11.1	+1.9	-0.0
Clerical (III & IV)	-4.4%	-29.8	-11.3	-6.6	-1.9	-0.8	-9.0	-2.0	+9.4	-12.8	-1.6	+6.7
Management & Administrative	-4.5%	-50.0	-12.1	-6.3	-5.1	+4.0	-7.5	-4.2	+6.7	-24.9	-1.6	+1.0
Support	-4.0%	-31.0	-3.5	-6.5	+4.9	-6.4	-11.0	-1.8	-2.6	-1.9	-2.3	
Maintenance/ Technical	+5.1%	+4.9	+0.5	-1.5	+4.1	+0.0	+0.0	+1.0	+1.0	-0.2	+0.0	



General Support	-3.0%	-26.1	-3.1	-8.0	+9.0	-6.4	-11.0	-0.8	-1.6	-2.0	-2.3	
Health Care Assistants	-1.4%	-58.2	+2.7	-19.6	+19.4	+8.0	-32.1	-10.9	+21.1	-33.1	-13.9	
Home Help	-0.9%	-32.8	+75.8	-75.1	+8.6	-21.6	-4.4		+1.1	-17.2		
Care, other	+11.4%	+23.0	+4.6	+3.6	+0.3	+5.0	-1.4	+0.0	+0.0	+12.5	-1.5	+0.0
Patient & Client Care	-0.9%	-68.0	+83.1	-91.1	+28.3	-8.6	-37.9	-10.9	+22.2	-37.7	-15.4	+0.0



Year to Date Summary

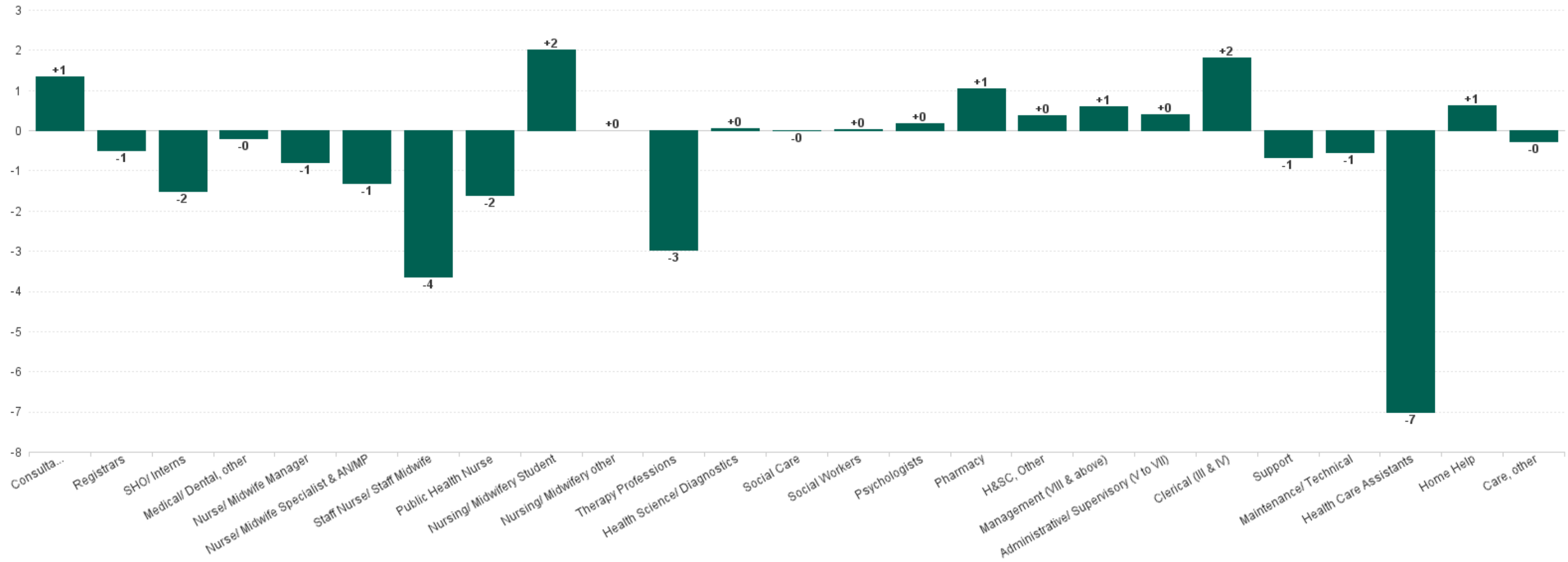
	% WTE change since DEC 2023	WTE change since DEC 2023	CHO 1	CHO 2	CHO 3	CHO 4	CHO 5	CHO 6	CHO 7	CHO 8	CHO 9	other Community Services
Total	-1.4%	-191.9	+32.6	-114.4	+11.4	+20.9	-84.3	-22.4	+21.5	-37.0	-14.9	-5.4
Consultants	+10.9%	+0.6			-0.6	+0.0		+1.0			+0.2	
Registrars	+33.3%	+3.5	+1.0		+1.5			+0.0			+1.0	
SHO/ Interns	+7.8%	+1.4			+0.0	+1.0			+0.0		+0.4	
Medical/ Dental, other	-8.9%	-7.5	-6.1	-0.4	-0.2	+1.7	-1.2	-1.0	+0.0	-0.3		
Medical & Dental	-1.7%	-2.0	-5.1	-0.4	+0.7	+2.7	-1.2	+0.0	+0.0	-0.3	+1.6	
Nurse/ Midwife Manager	+0.2%	+1.7	+2.7	+2.6	-2.4	+3.9	-7.3	-2.4	+7.8	-5.8	+2.5	+0.0
Nurse/ Midwife Specialist & AN/MP	-1.5%	-1.7	-0.1	-1.2	+1.4	-1.1	-1.2	-2.9	-0.3	+1.8	+2.1	
Staff Nurse/ Staff Midwife	+0.7%	+18.6	-5.9	-9.3	+1.3	+31.4	-13.1	-0.8	-2.1	+16.0	+1.0	
Public Health Nurse	-19.3%	-2.1	-1.0	-0.1		-0.5	+0.0			-0.6		
Nursing/ Midwifery Student	-46.6%	-3.5				-3.0	-2.0		+0.0	+1.5		
Nursing/ Midwifery other	-32.4%	-0.9	+0.0							-0.9		
Nursing & Midwifery	+0.3%	+12.0	-4.3	-8.0	+0.3	+30.7	-23.6	-6.1	+5.5	+12.0	+5.6	+0.0
Therapy Professions	-4.6%	-17.9	-2.2	+0.6	-8.5	-1.6	+1.9	-2.5	-2.6	+2.2	-5.2	
Health Science/ Diagnostics	+0.6%	+0.0		-0.1	+0.0	+0.0				+0.0	+0.1	
Social Care	-0.4%	-0.0				+0.0					+0.0	-0.0
Social Workers	-1.0%	-0.5	-1.3	+0.5	+0.0		-0.5	+0.0	+0.2	-0.0	+0.5	
Psychologists	+13.0%	+0.5	+0.5		+0.0		-0.1	+0.0			+0.0	
Pharmacy	+5.5%	+1.1		+0.0	+0.0	+0.4	-0.1	+0.3	+0.0	+0.0	+0.5	
H&SC, Other	-10.1%	-2.6	+0.6	-0.2		-1.4	-2.1	+0.0	+0.0		+0.5	



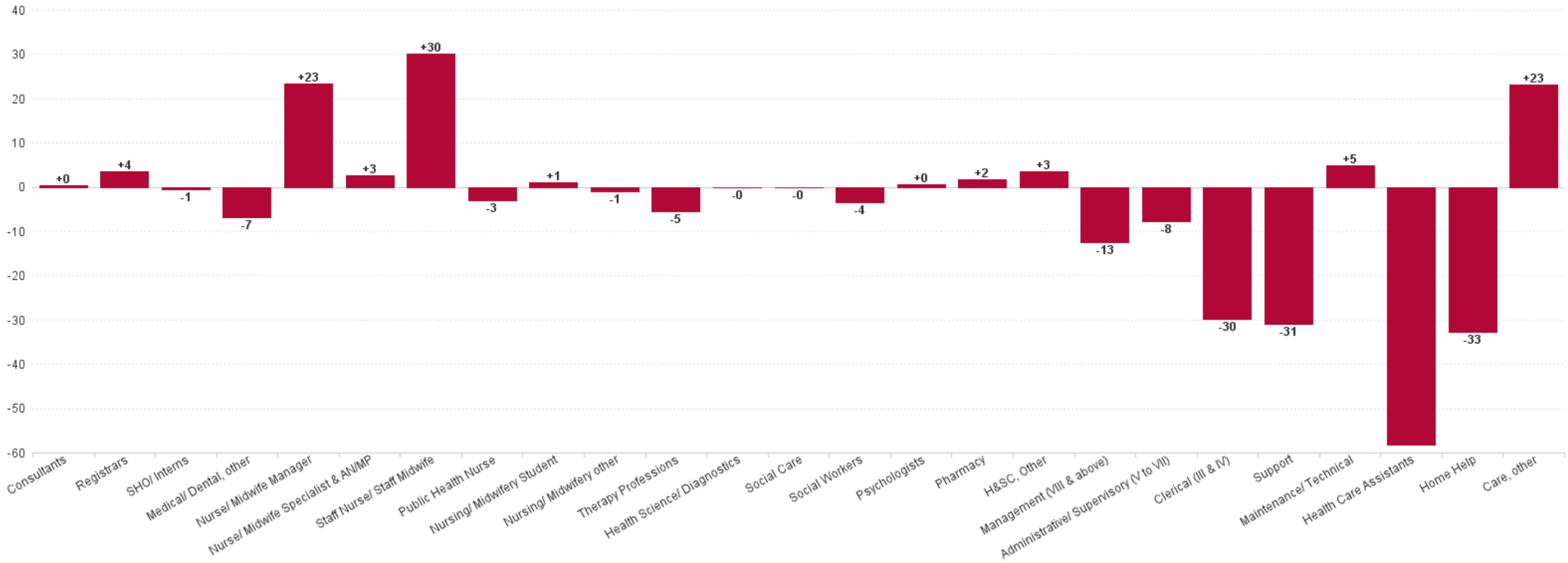
Health & Social Care Professionals	-3.9%	-19.4	-2.3	+0.7	-8.5	-2.6	-0.8	-2.2	-2.4	+2.2	-3.5	-0.0
Management (VIII & above)	-6.6%	-8.1	+1.0	-0.1	+0.3	-3.4	+1.0	+1.0	-0.0	+0.0	-2.0	-5.9
Administrative/ Supervisory (V to VII)	-3.4%	-10.2	-1.1	-0.4	-4.0	+8.1	+1.5	-5.5	-1.3	-9.9	+2.8	-0.4
Clerical (III & IV)	-5.2%	-36.0	-7.9	-3.1	-3.6	-0.4	-5.6	-2.8	+1.3	-12.3	-2.4	+0.9
Management & Administrative	-4.9%	-54.2	-8.1	-3.6	-7.3	+4.3	-3.2	-7.3	-0.1	-22.2	-1.6	-5.4
Support	-3.5%	-26.6	-7.3	-6.4	+5.7	-5.5	-6.7	-2.9	+1.3	-1.7	-3.2	
Maintenance/ Technical	+6.1%	+5.8	+0.8	-0.6	+3.6	+0.0	+0.0	+1.0	+1.0	-0.1	+0.0	
General Support	-2.4%	-20.9	-6.5	-7.0	+9.3	-5.5	-6.7	-1.9	+2.3	-1.8	-3.2	
Health Care Assistants	-1.0%	-42.5	+4.8	-24.8	+21.1	+13.5	-30.4	-5.0	+19.1	-28.6	-12.2	
Home Help	-2.2%	-79.3	+51.0	-74.6	-2.2	-22.7	-15.5		-2.9	-12.3		
Care, other	+6.8%	+14.3	+3.0	+3.3	-2.0	+0.4	-3.0	+0.0	+0.0	+14.0	-1.5	+0.0
Patient & Client Care	-1.4%	-107.4	+58.9	-96.1	+17.0	-8.8	-48.9	-5.0	+16.1	-27.0	-13.7	+0.0



Previous Month Summary Chart: Change since SEP 2024



Previous Year Summary Chart: Change since OCT 2023



YTD Summary Chart: Change since DEC 2023

