

Older People Employment Report : JUL 2024

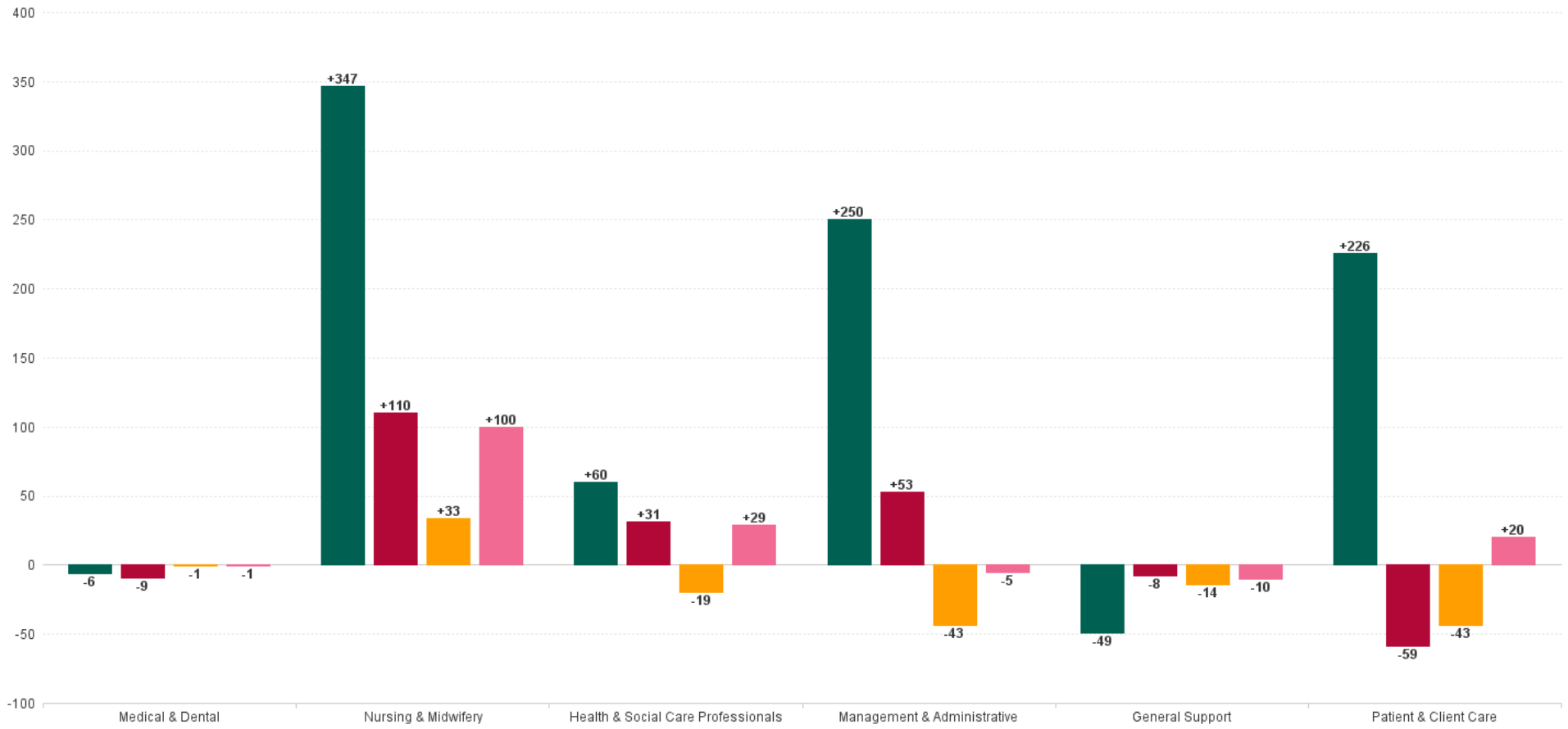
Older People Employment Report by Staff Group

JUL 2024	WTE DEC 2019	WTE DEC 2022	WTE DEC 2023	WTE JUN 2024	WTE JUL 2024	WTE Change 2023	WTE Change 2024	WTE Change JUN 2024	WTE Change Dec 2022 to JUL 2024	WTE Change Dec 2019 to JUL 2024	% WTE Change Dec 2022 to JUL 2024	No. JUL 2024
Overall	13,239	13,947	14,154	14,221	14,066	+207	-88	-155	+119	+827	+0.9%	16,954
Consultants	4	7	5	5	5	-1	-0	+0	-2	+1	-22.9%	7
Registrars	10	10	11	14	16	+1	+6	+2	+7	+7	+69.7%	19
SHO/ Interns	15	12	18	18	19	+6	+1	+1	+6	+4	+53.9%	21
Medical/ Dental, other	95	98	85	79	78	-14	-7	-1	-21	-18	-20.9%	148
Medical & Dental	124	126	118	116	118	-8	-1	+2	-9	-6	-7.0%	195
Nurse/ Midwife Manager	711	738	811	818	821	+73	+10	+3	+83	+110	+11.3%	863
Nurse/ Midwife Specialist & ANMP	26	74	111	109	110	+36	-0	+2	+36	+84	+48.2%	116
Staff Nurse/ Staff Midwife	2,575	2,737	2,700	2,748	2,731	-38	+32	-17	-6	+156	-0.2%	3,088
Public Health Nurse	14	13	11	11	11	-1	-0	+0	-2	-4	-14.7%	12
<i>Nursing/ Midwifery awaiting registration</i>	1	1	7	1	1	+7	-6	+0	+0	+0	+2.0%	1
<i>Post-registration Nurse/ Midwife Student</i>	1									-1	-100.0%	
Nursing/ Midwifery Student	2	1	7	1	1	+7	-6	+0	+0	-1	+2.0%	1
Nursing/ Midwifery other	1	3	3	3	2	-0	-1	-1	-1	+1	-36.0%	2
Nursing & Midwifery	3,329	3,566	3,643	3,690	3,676	+77	+33	-14	+110	+347	+3.1%	4,082
<i>Dietitians</i>	16	25	30	34	33	+5	+3	-0	+8	+17	+31.2%	40
<i>Occupational Therapists</i>	113	125	144	140	137	+19	-6	-2	+12	+24	+9.8%	156
<i>Physiotherapists</i>	123	152	163	151	150	+11	-13	-1	-3	+27	-1.7%	172
<i>Podiatrists & Chiropodists</i>	12	3	5	5	5	+1	+0	-0	+1	-7	+43.6%	7
<i>Speech & Language Therapists</i>	23	34	43	41	41	+9	-1	+0	+7	+18	+22.1%	47
Therapy Professions	288	340	385	370	367	+45	-18	-4	+26	+79	+7.8%	422
Health Science/ Diagnostics	6	5	5	5	5	-0	-0	-0	-0	-2	-3.8%	8
Social Care	3	2	3	3	3	+0	+0	+0	+0	-0	+17.7%	4
Social Workers	98	69	52	53	51	-18	-0	-2	-18	-47	-26.1%	59
Psychologists	2	4	4	4	4	+0	+1	+0	+1	+2	+24.3%	6
Pharmacy	15	20	20	21	20	+0	+0	-1	+1	+5	+4.0%	29
H&SC, Other	1	3	26	24	24	+22	-1	+0	+21	+23	+619.5%	26
Health & Social Care Professionals	414	443	493	480	474	+50	-19	-6	+31	+60	+7.0%	554
Management (VIII & above)	75	116	122	116	114	+6	-8	-2	-2	+39	-2.1%	119
Administrative/ Supervisory (V to VII)	169	263	296	294	288	+33	-8	-6	+25	+119	+9.6%	304
Clerical (III & IV)	570	631	689	672	662	+58	-27	-10	+30	+91	+4.8%	755
Management & Administrative	813	1,010	1,107	1,082	1,064	+96	-43	-18	+53	+250	+5.2%	1,178
Support	797	757	762	748	743	+6	-20	-6	-14	-54	-1.8%	845
Maintenance/ Technical	95	94	94	100	100	+0	+6	+0	+6	+5	+6.5%	103
General Support	892	851	857	848	843	+6	-14	-6	-8	-49	-0.9%	948
Home Help	3,448	3,687	3,638	3,665	3,586	-49	-52	-80	-101	+138	-2.7%	5,055
Health Care Assistants	4,079	4,072	4,089	4,122	4,091	+16	+3	-31	+19	+12	+0.5%	4,684
Care, other	140	192	210	219	216	+18	+6	-3	+24	+75	+12.2%	258
Patient & Client Care	7,667	7,951	7,936	8,006	7,893	-15	-43	-113	-59	+226	-0.7%	9,997



WTE Change by Staff Category

■ WTE change since DEC 2019 ■ WTE change since DEC 2022 ■ WTE change since DEC 2023 ■ WTE change since JUL 2023

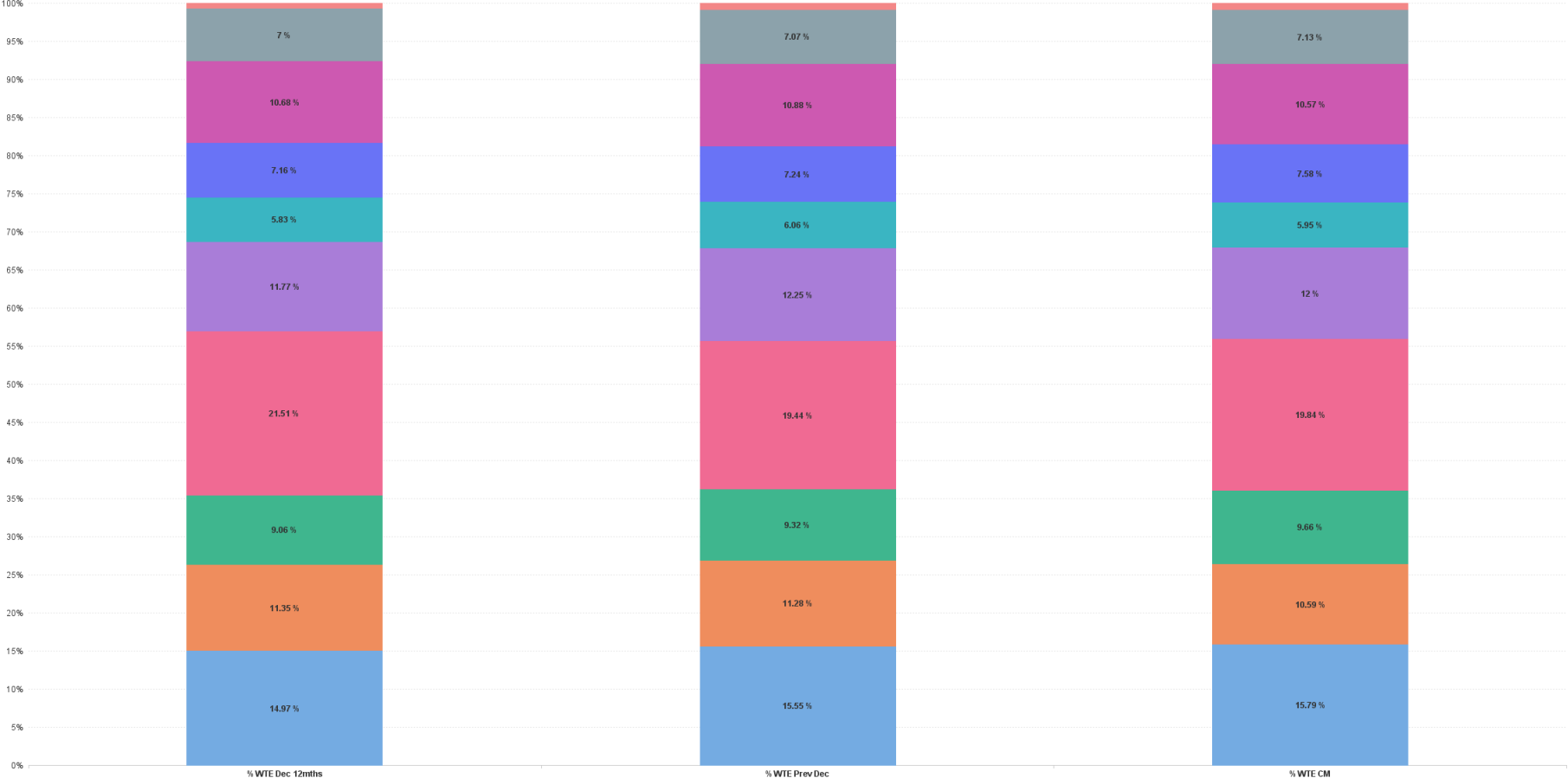


Older People Report by CHO: JUL 2024

JUL 2024	WTE DEC 2019	WTE DEC 2022	WTE DEC 2023	WTE JUN 2024	WTE JUL 2024	WTE Change 2023	WTE Change 2024	WTE Change JUN 2024	WTE Change Dec 2022 to JUL 2024	WTE Change Dec 2019 to JUL 2024	% WTE Change Dec 2022 to JUL 2024	No. JUL 2024
Overall	13,239	13,947	14,154	14,221	14,066	+207	-88	-155	+119	+827	0.85%	16,954
CHO 1	1,836	2,087	2,202	2,231	2,221	+114	+20	-10	+134	+386	6.42%	2,620
CHO 2	1,606	1,582	1,596	1,578	1,489	+14	-107	-89	-93	-117	-5.90%	1,802
CHO 3	974	1,264	1,320	1,366	1,359	+56	+39	-7	+95	+385	7.53%	1,633
CHO 4	2,919	3,000	2,752	2,814	2,791	-248	+39	-23	-209	-128	-6.98%	3,655
CHO 5	1,653	1,641	1,733	1,690	1,688	+92	-45	-1	+47	+35	2.88%	2,037
CHO 6	823	813	858	836	837	+46	-22	+1	+24	+13	2.96%	904
CHO 7	996	999	1,025	1,067	1,067	+26	+42	-0	+68	+71	6.81%	1,201
CHO 8	1,488	1,489	1,540	1,506	1,487	+50	-53	-19	-2	-1	-0.15%	1,840
CHO 9	870	976	1,001	1,005	1,002	+25	+2	-2	+26	+133	2.70%	1,126
other Community Services	74	95	128	127	124	+32	-3	-3	+29	+50	30.73%	136



% Total by CHO



■ CHO 1 ■ CHO 2 ■ CHO 3 ■ CHO 4 ■ CHO 5 ■ CHO 6 ■ CHO 7 ■ CHO 8 ■ CHO 9 ■ other Community Services



Older People Employment Report by HSE/S38: JUL 2024

JUL 2024	WTE DEC 2019	WTE DEC 2022	WTE DEC 2023	WTE JUN 2024	WTE JUL 2024	WTE Change 2023	WTE Change 2024	WTE Change JUN 2024	WTE Change Dec 2022 to JUL 2024	WTE Change Dec 2019 to JUL 2024	% WTE Change Dec 2022 to JUL 2024	No. JUL 2024
Overall	13,239	13,947	14,154	14,221	14,066	+207	-88	-155	+119	+827	0.85%	16,954
Health Service Executive	12,531	13,217	13,389	13,309	13,156	+172	-233	-153	-61	+625	-0.46%	15,923
Section 38 Voluntary Agencies	708	731	765	913	910	+35	+145	-2	+180	+202	24.58%	1,031



Older People Employment Report by HSE: JUL 2024

JUL 2024	WTE DEC 2019	WTE DEC 2022	WTE DEC 2023	WTE JUN 2024	WTE JUL 2024	WTE Change 2023	WTE Change 2024	WTE Change JUN 2024	WTE Change Dec 2022 to JUL 2024	WTE Change Dec 2019 to JUL 2024	% WTE Change Dec 2022 to JUL 2024	No. JUL 2024
Total HSE	12,531	13,217	+13,389	13,309	13,156	+172	-233	-153	-60	+625	-0.46%	15,923
Consultants	3	5	+4	4	4	-1	-0	+0	-2	+1	-29.64%	5
Registrars	7	7	+7	10	12	+0	+6	+2	+6	+6	86.46%	15
SHO/ Interns	10	8	+12	11	14	+4	+2	+3	+5	+4	68.33%	16
Medical/ Dental, other	93	97	+83	77	76	-15	-6	-1	-21	-17	-21.62%	146
Medical & Dental	113	117	+105	102	105	-12	+1	+4	-11	-7	-9.79%	182
Nurse/ Midwife Manager	657	687	+754	744	746	+67	-8	+3	+59	+90	8.57%	785
Nurse/ Midwife Specialist & AN/MP	26	74	+110	108	109	+35	-0	+2	+35	+83	46.89%	115
Staff Nurse/ Staff Midwife	2,399	2,566	+2,529	2,516	2,498	-37	-30	-18	-67	+99	-2.62%	2,825
Public Health Nurse	14	13	+11	11	11	-1	-0	+0	-2	-4	-14.68%	12
Nursing/ Midwifery awaiting registration	1	1	+7	1	1	+7	-6	+0	+0	+0	2.04%	1
Post-registration Nurse/ Midwife Student	1									-1	-100.00%	
Nursing/ Midwifery Student	2	1	+7	1	1	+7	-6	+0	+0	-1	2.04%	1
Nursing/ Midwifery other	1	3	+3	3	2	-0	-1	-1	-1	+1	-36.00%	2
Nursing & Midwifery	3,100	3,344	+3,414	3,382	3,368	+70	-46	-15	+24	+268	0.71%	3,740
Dietitians	14	23	+26	28	28	+4	+2	-0	+6	+14	24.41%	34
Occupational Therapists	93	99	+119	112	110	+20	-9	-2	+11	+17	10.94%	127
Physiotherapists	93	113	+121	123	121	+8	-0	-2	+8	+28	6.83%	140
Podiatrists & Chiropodists	11	3	+5	5	5	+1	+0	-0	+1	-7	46.27%	6
Speech & Language Therapists	19	29	+38	36	37	+9	-1	+0	+7	+18	25.48%	42
Therapy Professions	230	267	+309	305	300	+42	-9	-5	+33	+70	12.36%	349
Health Science/ Diagnostics	5	4	+4	4	4	-0	-0	-0	-0	-2	-4.84%	6
Social Care	3	2	+3	3	3	+0	+0	+0	+0	-0	17.70%	4
Social Workers	84	54	+37	37	36	-17	-1	-2	-18	-49	-33.81%	40
Psychologists	2	4	+3	4	4	-0	+1	+0	+0	+2	10.00%	5
Pharmacy	11	14	+14	15	14	+1	-0	-1	+0	+3	1.37%	21
H&SC, Other	1	3	+26	24	24	+22	-1	+0	+21	+23	619.53%	26
Health & Social Care Professionals	336	348	+396	391	384	+48	-11	-7	+37	+48	10.51%	451
Management (VIII & above)	73	112	+118	111	109	+6	-9	-2	-3	+36	-3.04%	114
Administrative/ Supervisory (V to VII)	149	239	+266	269	263	+27	-3	-6	+24	+114	9.88%	278
Clerical (III & IV)	543	601	+661	644	634	+60	-27	-10	+33	+91	5.55%	719
Management & Administrative	765	952	+1,045	1,024	1,006	+93	-39	-18	+54	+241	5.62%	1,111
Support	694	645	+652	633	627	+7	-25	-6	-17	-67	-2.71%	712
Maintenance/ Technical	85	85	+84	89	89	-0	+5	+0	+5	+4	5.37%	92
General Support	780	729	+736	722	717	+7	-20	-6	-13	-63	-1.77%	804
Home Help	3,448	3,687	+3,638	3,665	3,586	-49	-52	-80	-101	+138	-2.75%	5,055
Health Care Assistants	3,856	3,851	+3,849	3,808	3,779	-2	-70	-29	-71	-77	-1.86%	4,330
Care, other	135	188	+207	214	211	+18	+5	-3	+23	+76	12.18%	250
Patient & Client Care	7,438	7,726	+7,693	7,688	7,576	-33	-117	-111	-150	+138	-1.94%	9,635



Older People Employment Report by S38 Voluntary Agencies: JUL 2024

JUL 2024	WTE DEC 2019	WTE DEC 2022	WTE DEC 2023	WTE JUN 2024	WTE JUL 2024	WTE Change 2023	WTE Change 2024	WTE Change JUN 2024	WTE Change Dec 2022 to JUL 2024	WTE Change Dec 2019 to JUL 2024	% WTE Change Dec 2022 to JUL 2024	No. JUL 2024
Total S38 Voluntary Agencies	708	731	765	913	910	+35	+145	-2	+180	+202	+24.6%	1,031
Consultants	1	2	2	2	2	+0	+0	+0	+0	+1	+0.0%	2
Registrars	3	3	4	4	4	+1	+0	+0	+1	+1	+33.3%	4
SHO/ Interns	5	4	6	7	5	+2	-1	-2	+1	+0	+25.0%	5
Medical/ Dental, other	2	1	2	2	2	+1	-0	+0	+1	-0	+53.0%	2
Medical & Dental	11	10	14	14	12	+4	-1	-2	+3	+1	+26.6%	13
Nurse/ Midwife Manager	54	50	57	74	74	+7	+18	+0	+24	+21	+48.7%	78
Nurse/ Midwife Specialist & AN/MP			1	1	1	+1	+0	+0	+1	+1	-100.0%	1
Staff Nurse/ Staff Midwife	176	172	171	232	233	-1	+62	+1	+61	+57	+35.7%	263
Nursing & Midwifery	230	222	229	307	308	+7	+80	+1	+87	+79	+39.1%	342
Dietitians	3	3	4	5	5	+1	+1	+0	+2	+2	+88.1%	6
Occupational Therapists	20	26	25	27	27	-2	+3	+0	+1	+7	+5.3%	29
Physiotherapists	30	39	42	28	29	+3	-13	+1	-10	-1	-26.3%	32
Podiatrists & Chiropodists	1	0	0	0	0	+0	+0	+0	+0	-0	+0.0%	1
Speech & Language Therapists	4	4	4	4	4	+0	+0	+0	+0	+0	+0.0%	5
Therapy Professions	58	73	75	65	66	+3	-9	+1	-7	+8	-9.0%	73
Health Science/ Diagnostics	1	1	1	1	1	+0	+0	+0	+0	+0	+0.0%	2
Social Workers	14	15	15	16	16	-0	+1	+0	+0	+2	+0.7%	19
Psychologists	1		1	1	1	+1	+0	+0	+1	+0	-100.0%	1
Pharmacy	5	6	5	6	6	-0	+1	+0	+1	+2	+10.3%	8
Health & Social Care Professionals	78	95	97	88	89	+3	-8	+1	-5	+12	-5.7%	103
Management (VIII & above)	2	4	4	5	5	+0	+1	+0	+1	+3	+25.0%	5
Administrative/ Supervisory (V to VII)	19	24	30	25	25	+6	-5	+0	+1	+6	+6.3%	26
Clerical (III & IV)	27	31	28	28	28	-2	-1	-0	-3	+0	-9.8%	36
Management & Administrative	49	58	62	58	58	+4	-4	-0	-1	+9	-0.9%	67
Support	103	112	111	115	115	-1	+5	-0	+4	+13	+3.2%	133
Maintenance/ Technical	10	9	10	11	11	+1	+1	+0	+2	+1	+16.9%	11
General Support	113	121	121	126	126	-1	+6	-0	+5	+14	+4.2%	144
Health Care Assistants	223	222	240	314	312	+18	+73	-2	+91	+89	+40.9%	354
Care, other	5	4	4	5	5	-0	+1	-0	+1	-1	+15.1%	8
Patient & Client Care	229	226	243	319	317	+18	+74	-2	+91	+88	+40.4%	362



Older People Employment Report by Grade Group: JUL 2024

CHO 1

JUL 2024	WTE DEC 2019	WTE DEC 2022	WTE DEC 2023	WTE JUN 2024	WTE JUL 2024	WTE Change 2023	WTE Change 2024	WTE Change JUN 2024	WTE Change Dec 2022 to JUL 2024	WTE Change Dec 2019 to JUL 2024	% WTE Change Dec 2022 to JUL 2024	No. JUL 2024
Overall	1836	2087	2202	2231	2221	+114	+20	-10	+134	+386	+6.4%	2,620
Registrars				1	0		+0	-1	+0	+0	-100.0%	1
Medical/ Dental, other	30	27	20	15	15	-7	-5	-0	-12	-15	-44.3%	38
Medical & Dental	30	27	20	16	15	-7	-5	-1	-12	-15	-43.3%	39
Nurse/ Midwife Manager	91	91	93	93	93	+2	+0	-1	+2	+2	+2.2%	98
Nurse/ Midwife Specialist & AN/MP	7	18	23	22	23	+4	+0	+0	+4	+16	+23.6%	23
Staff Nurse/ Staff Midwife	307	338	342	340	336	+4	-7	-4	-3	+28	-0.8%	380
Public Health Nurse		1	1	1	1	+0	+0	+0	+0	+1	+40.8%	1
Nursing/ Midwifery other		1	1	1	1	+0	+0	+0	+0	+1	+0.0%	1
Nursing & Midwifery	405	449	459	457	453	+10	-6	-4	+4	+48	+0.9%	503
<i>Dietitians</i>		1	3	3	2	+2	-1	-0	+1	+1	+141.4%	3
<i>Occupational Therapists</i>	10	20	25	25	23	+5	-2	-2	+2	+2	+11.1%	26
<i>Physiotherapists</i>	1	5	8	8	8	+3	-1	-1	+3	+3	+47.5%	9
<i>Speech & Language Therapists</i>			1	1	1	+1	+0	-0	+1	+1	-100.0%	1
Therapy Professions	11	27	37	36	34	+10	-4	-3	+7	+22	+25.2%	39
Health Science/ Diagnostics	1									-1	-100.0%	
Social Workers	18	9	12	11	11	+3	-1	-0	+1	-7	+15.7%	12
Psychologists				1	1		+1	+0	+1	+1	-100.0%	1
H&SC, Other			6	6	7	+6	+1	+1	+7	+7	-100.0%	7
Health & Social Care Professionals	30	36	55	54	51	+19	-4	-2	+15	+22	+43.1%	59
Management (VIII & above)	8	10	9	10	10	-1	+1	+0	-0	+2	-0.7%	10
Administrative/ Supervisory (V to VII)	14	25	34	33	33	+9	-1	-0	+8	+19	+31.8%	34
Clerical (III & IV)	85	86	88	83	80	+2	-8	-3	-5	-5	-6.2%	96
Management & Administrative	107	121	131	126	123	+10	-8	-3	+3	+16	+2.1%	140
Support	123	111	122	113	113	+12	-10	-0	+2	-10	+1.8%	132
Maintenance/ Technical	7	8	6	6	6	-2	-0	+0	-2	-1	-22.3%	6
General Support	130	118	129	119	119	+10	-10	-0	+0	-11	+0.2%	138
Home Help	543	748	824	874	876	+76	+52	+2	+127	+333	+17.0%	1,058
Health Care Assistants	563	564	557	554	553	-7	-3	-1	-10	-10	-1.9%	647
Care, other	28	24	27	31	31	+3	+4	-0	+6	+3	+26.3%	36
Patient & Client Care	1,134	1,336	1,408	1,459	1,460	+71	+52	+1	+123	+326	+9.2%	1,741



Older People Employment Report by Grade Group: JUL 2024

CHO 2

JUL 2024	WTE DEC 2019	WTE DEC 2022	WTE DEC 2023	WTE JUN 2024	WTE JUL 2024	WTE Change 2023	WTE Change 2024	WTE Change JUN 2024	WTE Change Dec 2022 to JUL 2024	WTE Change Dec 2019 to JUL 2024	% WTE Change Dec 2022 to JUL 2024	No. JUL 2024
Overall	1606	1582	1596	1578	1489	+14	-107	-89	-93	-117	-5.9%	1,802
Medical/ Dental, other	11	10	7	7	6	-3	-0	-0	-3	-5	-34.9%	11
Medical & Dental	11	10	7	7	6	-3	-0	-0	-3	-5	-34.9%	11
Nurse/ Midwife Manager	58	74	73	77	77	-0	+3	-0	+3	+18	+3.8%	81
Nurse/ Midwife Specialist & AN/MP	2	7	12	11	11	+5	-1	+0	+4	+9	+61.9%	12
Staff Nurse/ Staff Midwife	301	305	317	308	306	+12	-11	-2	+2	+5	+0.5%	348
Public Health Nurse	1	1	1	1	1	+0	+0	+0	+0	+0	+0.0%	1
Nursing & Midwifery	362	386	403	397	395	+17	-8	-2	+9	+33	+2.3%	442
Dietitians	1	1	2	2	2	+1	+0	-0	+1	+1	+97.0%	2
Occupational Therapists	10	10	16	16	16	+6	+1	+0	+7	+7	+68.3%	18
Physiotherapists	14	15	18	19	18	+3	+0	-0	+3	+3	+19.2%	21
Speech & Language Therapists	2	2	4	3	3	+2	-1	+0	+1	+1	+30.0%	3
Therapy Professions	26	28	39	39	39	+11	+0	-0	+11	+14	+39.8%	44
Health Science/ Diagnostics	1	1	1	1	1	+0	-0	-0	-0	+0	-13.7%	1
Social Workers	10	13	4	5	4	-9	-0	-1	-9	-6	-69.7%	4
Pharmacy	1	1	1	1	1	-0	+0	-0	-0	-0	-1.9%	1
H&SC, Other			4	3	3	+4	-1	+0	+3	+3	-100.0%	3
Health & Social Care Professionals	37	42	48	48	47	+6	-1	-1	+5	+10	+11.6%	53
Management (VIII & above)	2	6	6	6	6	+0	-0	-0	-0	+4	-1.5%	6
Administrative/ Supervisory (V to VII)	8	16	18	17	17	+2	-1	+0	+2	+10	+9.6%	18
Clerical (III & IV)	72	64	68	69	68	+4	-0	-2	+4	-4	+5.7%	76
Management & Administrative	81	86	92	92	91	+6	-1	-2	+5	+9	+5.9%	100
Support	56	51	51	47	46	+0	-5	-2	-5	-11	-9.8%	51
Maintenance/ Technical	19	20	21	21	21	+1	-0	-0	+1	+2	+4.9%	22
General Support	75	71	72	69	67	+1	-5	-2	-4	-8	-5.6%	73
Home Help	499	407	376	372	300	-31	-76	-72	-107	-199	-26.3%	479
Health Care Assistants	515	536	556	549	539	+20	-17	-10	+3	+24	+0.6%	596
Care, other	24	45	43	45	44	-2	+1	-1	-1	+20	-1.6%	48
Patient & Client Care	1,039	988	975	965	883	-13	-92	-83	-105	-156	-10.6%	1,123



Older People Employment Report by Grade Group: JUL 2024

CHO 3

JUL 2024	WTE DEC 2019	WTE DEC 2022	WTE DEC 2023	WTE JUN 2024	WTE JUL 2024	WTE Change 2023	WTE Change 2024	WTE Change JUN 2024	WTE Change Dec 2022 to JUL 2024	WTE Change Dec 2019 to JUL 2024	% WTE Change Dec 2022 to JUL 2024	No. JUL 2024
Overall	974	1264	1320	1366	1359	+56	+39	-7	+95	+385	+7.5%	1,633
Consultants	1	3	2	1	2	-1	-0	+0	-2	+1	-50.0%	2
Registrars		2	2	4	5	+0	+3	+1	+3	+5	+145.2%	5
SHO/ Interns		2	3	2	4	+1	+1	+2	+2	+4	+102.0%	4
Medical/ Dental, other	5	6	5	5	5	-1	+0	+0	-1	+0	-16.0%	5
Medical & Dental	6	13	12	12	15	-1	+4	+3	+2	+9	+19.0%	16
Nurse/ Midwife Manager	64	68	74	74	74	+5	+0	+0	+6	+10	+8.1%	77
Nurse/ Midwife Specialist & ANMP	2	11	13	13	13	+2	+1	+0	+3	+12	+27.5%	14
Staff Nurse/ Staff Midwife	239	266	276	287	285	+10	+9	-2	+19	+46	+7.0%	321
Public Health Nurse	1									-1	-100.0%	
Nursing & Midwifery	305	345	363	374	372	+17	+10	-2	+27	+67	+7.8%	412
<i>Dietitians</i>		2	2	3	3	-0	+1	+0	+1	+1	+38.4%	3
<i>Occupational Therapists</i>	12	13	21	19	18	+7	-2	-1	+5	+5	+39.5%	21
<i>Physiotherapists</i>	10	21	17	17	17	-3	+0	+0	-3	-3	-16.5%	20
<i>Podiatrists & Chiropodists</i>	3	2	3	4	4	+1	+1	+0	+2	+2	+118.8%	4
<i>Speech & Language Therapists</i>	2	6	7	7	7	+1	-0	+0	+0	+0	+5.1%	7
Therapy Professions	28	44	49	49	49	+5	-1	-0	+5	+21	+11.2%	55
Health Science/ Diagnostics	1	1	1	1	1	+0	+0	+0	+0	-0	+1.4%	2
Social Workers	7	2	2	2	2	+0	+0	+0	+0	-5	+1.0%	2
Psychologists		1	1	1	1	-0	+0	+0	+0	+1	+6.3%	1
Pharmacy	1	1	1	1	1	+0	+0	+0	+0	+0	+1.0%	1
Health & Social Care Professionals	36	48	54	54	53	+5	-0	-0	+5	+17	+10.3%	61
Management (VIII & above)	6	10	9	10	10	-1	+1	-0	+0	+4	+0.4%	10
Administrative/ Supervisory (V to VII)	21	27	28	26	25	+2	-3	-1	-1	+5	-5.3%	28
Clerical (III & IV)	50	63	68	67	66	+5	-2	-1	+3	+16	+4.6%	76
Management & Administrative	76	99	105	103	101	+6	-5	-2	+2	+25	+1.5%	114
Support	64	46	51	58	58	+6	+6	-1	+12	-7	+26.7%	67
Maintenance/ Technical	22	23	22	27	27	-0	+4	+0	+4	+5	+17.0%	27
General Support	86	68	74	85	84	+6	+11	-1	+16	-2	+23.5%	94
Home Help	175	342	364	361	358	+22	-6	-3	+16	+183	+4.7%	508
Health Care Assistants	279	331	324	353	352	-7	+28	-2	+21	+72	+6.3%	401
Care, other	10	17	25	24	23	+8	-1	-1	+6	+14	+36.3%	27
Patient & Client Care	464	690	712	739	733	+22	+21	-6	+43	+269	+6.3%	936



Older People Employment Report by Grade Group: JUL 2024

CHO 4

JUL 2024	WTE DEC 2019	WTE DEC 2022	WTE DEC 2023	WTE JUN 2024	WTE JUL 2024	WTE Change 2023	WTE Change 2024	WTE Change JUN 2024	WTE Change Dec 2022 to JUL 2024	WTE Change Dec 2019 to JUL 2024	% WTE Change Dec 2022 to JUL 2024	No. JUL 2024
Overall	2919	3000	2752	2814	2791	-248	+39	-23	-209	-128	-7.0%	3,655
Consultants	1	1	1	1	1	+0	+0	+0	+0	+0	+0.0%	2
Registrars	3	0				-0			-0	-3	-100.0%	
SHO/ Interns	1									-1	-100.0%	
Medical/ Dental, other	21	27	25	26	26	-2	+1	+0	-1	+5	-3.2%	55
Medical & Dental	26	28	26	27	27	-2	+1	+0	-1	+1	-3.2%	57
Nurse/ Midwife Manager	118	109	119	127	125	+10	+7	-1	+17	+8	+15.2%	136
Nurse/ Midwife Specialist & ANMP	3	6	11	9	10	+6	-2	+1	+4	+7	+65.1%	11
Staff Nurse/ Staff Midwife	515	575	513	548	543	-62	+29	-5	-33	+27	-5.7%	654
Public Health Nurse	5	6	5	4	4	-2	-0	+0	-2	-1	-33.3%	5
<i>Nursing/ Midwifery awaiting registration</i>	1		5			+5	-5				-100.0%	
<i>Post-registration Nurse/ Midwife Student</i>	1										-100.0%	
Nursing/ Midwifery Student	2		5			+5	-5			-2	-100.0%	
Nursing & Midwifery	643	697	653	688	682	-44	+30	-5	-14	+39	-2.1%	806
<i>Dietitians</i>	2		2	2	2	+2	+1	+0	+2	+2	-100.0%	2
<i>Occupational Therapists</i>	17	13	10	9	10	-3	+0	+1	-3	-3	-20.9%	12
<i>Physiotherapists</i>	15	16	13	9	9	-3	-4	-1	-7	-7	-43.9%	11
<i>Podiatrists & Chiropodists</i>	6	2	1	1	1	-0	-1	-0	-1	-1	-52.0%	1
<i>Speech & Language Therapists</i>	4	6	4	4	4	-2	-1	-0	-3	-3	-45.0%	4
Therapy Professions	44	37	30	25	25	-7	-4	-0	-11	-19	-30.9%	30
Health Science/ Diagnostics	1	1	1	1	1	+0	+0	+0	+0	+0	+0.0%	2
Social Care	2	1	1	1	1	+0	+0	+0	+0	-0	+0.8%	2
Social Workers	10	9				-9			-9	-10	-100.0%	
Pharmacy	3	5	4	5	4	-0	-0	-1	-1	+1	-11.7%	9
H&SC, Other			5	5	5	+5	+0	-0	+5	+5	-100.0%	5
Health & Social Care Professionals	60	53	41	38	37	-12	-5	-1	-16	-23	-30.9%	48
Management (VIII & above)	13	19	20	16	17	+1	-3	+1	-2	+4	-12.2%	18
Administrative/ Supervisory (V to VII)	17	29	39	49	48	+9	+9	-1	+18	+31	+62.1%	50
Clerical (III & IV)	128	130	128	128	128	-2	+0	+1	-1	+0	-1.1%	152
Management & Administrative	158	178	186	193	193	+8	+6	+0	+14	+35	+8.1%	220
Support	101	124	120	117	116	-3	-4	-1	-7	+16	-5.9%	128
Maintenance/ Technical	6	5	3	3	3	-2	+0	+0	-2	-3	-40.0%	3
General Support	107	129	123	120	119	-5	-4	-1	-9	+13	-7.3%	131
Home Help	1,113	1,068	932	931	921	-136	-11	-10	-146	-192	-13.7%	1,443
Health Care Assistants	781	814	753	780	774	-61	+20	-6	-41	-7	-5.0%	899
Care, other	31	34	37	38	38	+3	+1	-0	+4	+7	+11.0%	51
Patient & Client Care	1,925	1,916	1,722	1,749	1,733	-194	+11	-16	-183	-193	-9.6%	2,393



Older People Employment Report by Grade Group: JUL 2024

CHO 5

JUL 2024	WTE DEC 2019	WTE DEC 2022	WTE DEC 2023	WTE JUN 2024	WTE JUL 2024	WTE Change 2023	WTE Change 2024	WTE Change JUN 2024	WTE Change Dec 2022 to JUL 2024	WTE Change Dec 2019 to JUL 2024	% WTE Change Dec 2022 to JUL 2024	No. JUL 2024
Overall	1653	1641	1733	1690	1688	+92	-45	-1	+47	+35	+2.9%	2,037
Medical/ Dental, other	9	15	13	12	12	-1	-1	-0	-2	+3	-16.9%	16
Medical & Dental	9	15	13	12	12	-1	-1	-0	-2	+3	-16.9%	16
Nurse/ Midwife Manager	83	76	99	95	95	+23	-4	-0	+18	+11	+23.9%	100
Nurse/ Midwife Specialist & AN/MP	2	12	18	17	17	+6	-1	-0	+5	+15	+45.1%	18
Staff Nurse/ Staff Midwife	313	299	318	319	317	+19	-0	-1	+19	+4	+6.3%	364
Public Health Nurse	5	1	1	1	1	+0	+0	+0	+0	-4	+1.0%	1
<i>Nursing/ Midwifery awaiting registration</i>			2			+2	-2				-100.0%	
Nursing/ Midwifery Student			2			+2	-2				-100.0%	
Nursing & Midwifery	403	388	437	432	430	+50	-7	-2	+42	+26	+10.9%	483
<i>Dietitians</i>	4	4	4	4	4	+0	+0	-0	+0	+0	+2.1%	5
<i>Occupational Therapists</i>	13	11	15	16	16	+5	+0	-1	+5	+5	+44.3%	18
<i>Physiotherapists</i>	21	14	15	18	18	+1	+3	-0	+4	+4	+27.1%	22
<i>Podiatrists & Chiropodists</i>	0										-100.0%	
<i>Speech & Language Therapists</i>	3	1	4	4	3	+2	-0	-0	+2	+2	+176.6%	4
Therapy Professions	41	31	39	43	42	+8	+3	-1	+11	+1	+35.6%	49
Social Workers	3	4	5	5	5	+1	-0	-0	+1	+2	+31.5%	6
Psychologists		1	2	2	2	+0	+0	+0	+0	+2	+5.6%	2
Pharmacy		1	1	1	1	-0	-0	-0	-0	+1	-47.4%	1
H&SC, Other		2	6	4	4	+4	-2	-0	+2	+4	+96.7%	4
Health & Social Care Professionals	44	39	52	54	52	+13	+1	-2	+14	+8	+34.9%	62
Management (VIII & above)	4	11	11	12	12	+0	+1	-0	+1	+8	+9.5%	12
Administrative/ Supervisory (V to VII)	17	16	16	18	17	-0	+1	-0	+1	+1	+7.5%	18
Clerical (III & IV)	31	60	61	55	55	+0	-6	+0	-5	+24	-8.9%	60
Management & Administrative	52	87	88	84	84	+0	-4	-0	-3	+33	-3.6%	90
Support	91	75	62	56	56	-13	-6	-1	-19	-35	-25.6%	69
Maintenance/ Technical	5	4	4	4	4	-0	-0	-0	-0	-1	-4.5%	5
General Support	96	79	66	60	60	-13	-6	-1	-19	-36	-24.4%	74
Home Help	614	612	609	599	603	-3	-6	+4	-9	-11	-1.4%	806
Health Care Assistants	427	404	441	422	422	+37	-19	-0	+17	-5	+4.3%	479
Care, other	9	18	28	26	25	+10	-3	-1	+8	+17	+42.1%	27
Patient & Client Care	1,049	1,034	1,078	1,047	1,050	+44	-28	+3	+16	+1	+1.6%	1,312



Older People Employment Report by Grade Group: JUL 2024

CHO 6

JUL 2024	WTE DEC 2019	WTE DEC 2022	WTE DEC 2023	WTE JUN 2024	WTE JUL 2024	WTE Change 2023	WTE Change 2024	WTE Change JUN 2024	WTE Change Dec 2022 to JUL 2024	WTE Change Dec 2019 to JUL 2024	% WTE Change Dec 2022 to JUL 2024	No. JUL 2024
Overall	823	813	858	836	837	+46	-22	+1	+24	+13	+3.0%	904
Consultants				1	1		+1	+0	+1	+1	-100.0%	1
Registrars	1	1	1	1	1	+0	+0	+0	+0	+0	+0.0%	1
Medical/ Dental, other	4	2	3	2	2	+1	-1	+0	-0	-2	-6.9%	3
Medical & Dental	5	3	4	4	4	+1	+0	+0	+1	-1	+30.1%	5
Nurse/ Midwife Manager	68	64	76	72	74	+12	-2	+1	+10	+5	+15.7%	75
Nurse/ Midwife Specialist & AN/MP	1		9	9	9	+9	-0	-0	+9	+8	-100.0%	9
Staff Nurse/ Staff Midwife	204	206	205	206	207	-0	+2	+1	+2	+4	+0.9%	214
Nursing & Midwifery	273	269	290	287	290	+21	-0	+2	+21	+17	+7.7%	298
Dietitians	3	2	3	4	4	+0	+1	-0	+1	+1	+48.0%	5
Occupational Therapists	19	17	19	20	20	+2	+1	-0	+3	+3	+17.8%	22
Physiotherapists	21	19	26	22	23	+7	-3	+1	+4	+4	+24.2%	24
Podiatrists & Chiropodists	1	0	0	0	0	+0	+0	+0	+0	+0	+0.0%	1
Speech & Language Therapists	6	4	6	5	5	+2	-1	+0	+1	+1	+22.3%	6
Therapy Professions	50	42	54	52	52	+11	-2	+0	+10	+2	+22.7%	58
Social Workers	11	7	6	7	7	-1	+1	+0	-0	-5	-2.8%	8
Psychologists	2		1	1	1	+1	+0	+0	+1	-2	-100.0%	1
Pharmacy	3	4	4	5	5	+0	+0	+0	+1	+2	+14.6%	5
H&SC, Other			1	1	1	+1	+0	+0	+1	+1	-100.0%	1
Health & Social Care Professionals	66	53	65	64	65	+12	-0	+1	+12	-1	+21.7%	73
Management (VIII & above)	4	8	12	12	12	+4	-0	-0	+4	+8	+49.7%	12
Administrative/ Supervisory (V to VII)	22	32	39	34	34	+7	-5	+0	+2	+12	+7.2%	35
Clerical (III & IV)	30	33	31	28	28	-2	-3	-0	-5	-2	-16.5%	31
Management & Administrative	56	72	82	74	73	+9	-8	-0	+1	+17	+1.0%	78
Support	108	102	109	106	105	+7	-4	-1	+3	-3	+2.8%	113
Maintenance/ Technical	8	7	8	9	9	+1	+1	+0	+2	+1	+21.5%	9
General Support	116	110	117	115	114	+8	-3	-1	+4	-2	+4.0%	122
Health Care Assistants	300	299	296	287	286	-4	-9	-1	-13	-14	-4.3%	321
Care, other	7	6	5	5	5	-1	-0	-0	-1	-3	-22.8%	7
Patient & Client Care	307	305	300	292	291	-5	-9	-1	-14	-16	-4.7%	328



Older People Employment Report by Grade Group: JUL 2024

CHO 7

JUL 2024	WTE DEC 2019	WTE DEC 2022	WTE DEC 2023	WTE JUN 2024	WTE JUL 2024	WTE Change 2023	WTE Change 2024	WTE Change JUN 2024	WTE Change Dec 2022 to JUL 2024	WTE Change Dec 2019 to JUL 2024	% WTE Change Dec 2022 to JUL 2024	No. JUL 2024
Overall	996	999	1025	1067	1067	+26	+42	-0	+68	+71	+6.8%	1,201
SHO/ Interns	2	2	2	2	2	+0	+0	+0	+0	+0	+1.0%	2
Medical/ Dental, other	4	2	1	1	1	-1	+0	+0	-1	-3	-32.0%	2
Medical & Dental	6	4	3	3	3	-1	+0	+0	-1	-3	-15.7%	4
Nurse/ Midwife Manager	77	88	101	106	108	+13	+7	+2	+20	+31	+22.3%	111
Nurse/ Midwife Specialist & AN/MP	3	6	7	7	7	+1	-0	+0	+1	+4	+18.2%	7
Staff Nurse/ Staff Midwife	219	239	216	224	224	-22	+7	-0	-15	+5	-6.3%	243
<i>Nursing/ Midwifery awaiting registration</i>		1	1	1	1	+0	+0	+0	+0	+0	+2.0%	1
Nursing/ Midwifery Student		1	1	1	1	+0	+0	+0	+0	+1	+2.0%	1
Nursing & Midwifery	299	334	325	338	340	-9	+14	+2	+6	+41	+1.7%	362
<i>Dietitians</i>	1	2	1	2	1	-1	+1	-0	-0	-0	-11.9%	2
<i>Occupational Therapists</i>	4	5	6	5	5	+1	-1	-0	-1	-1	-10.3%	6
<i>Physiotherapists</i>	9	10	9	11	10	-1	+1	-1	-0	-0	-0.2%	12
<i>Podiatrists & Chiropodists</i>			1	0	0	+1	-0	-0	+0	+0	-100.0%	1
<i>Speech & Language Therapists</i>		1	2	1	1	+1	-1	+0	+0	+0	+1.0%	1
Therapy Professions	14	18	18	19	17	+1	-1	-1	-0	+4	-2.7%	22
Social Workers	11	5	5	5	4	-0	-1	-1	-1	-7	-17.5%	5
Pharmacy	3	3	3	3	3	+0	+0	+0	+0	+1	+1.0%	3
H&SC, Other	1	1	2	2	2	+1	+0	+0	+1	+1	+51.5%	2
Health & Social Care Professionals	28	27	28	28	26	+1	-2	-2	-1	-2	-3.0%	32
Management (VIII & above)	5	12	5	4	4	-7	-1	-0	-8	-1	-66.6%	4
Administrative/ Supervisory (V to VII)	12	20	18	17	16	-1	-2	-1	-4	+4	-19.2%	17
Clerical (III & IV)	34	42	46	47	45	+4	-1	-2	+3	+11	+7.1%	49
Management & Administrative	51	74	69	68	65	-4	-4	-3	-9	+14	-11.7%	70
Support	110	104	106	109	111	+2	+5	+1	+7	+1	+6.7%	124
Maintenance/ Technical	2	2	2	3	3	+0	+1	+0	+1	+1	+51.5%	3
General Support	112	106	108	112	114	+2	+6	+1	+8	+2	+7.5%	127
Home Help	108	117	133	132	133	+17	+0	+1	+17	+26	+14.2%	168
Health Care Assistants	388	332	350	378	378	+18	+27	+0	+46	-10	+13.8%	430
Care, other	5	6	8	8	8	+2	-0	-0	+2	+3	+34.1%	8
Patient & Client Care	500	455	492	518	519	+37	+27	+1	+64	+19	+14.1%	606



Older People Employment Report by Grade Group: JUL 2024

CHO 8

JUL 2024	WTE DEC 2019	WTE DEC 2022	WTE DEC 2023	WTE JUN 2024	WTE JUL 2024	WTE Change 2023	WTE Change 2024	WTE Change JUN 2024	WTE Change Dec 2022 to JUL 2024	WTE Change Dec 2019 to JUL 2024	% WTE Change Dec 2022 to JUL 2024	No. JUL 2024
Overall	1488	1489	1540	1506	1487	+50	-53	-19	-2	-1	-0.2%	1,840
Medical/ Dental, other	11	11	11	11	10	+0	-0	-0	-0	-0	-2.1%	18
Medical & Dental	11	11	11	11	10	+0	-0	-0	-0	-0	-2.1%	18
Nurse/ Midwife Manager	77	86	89	83	83	+2	-5	+1	-3	+7	-3.3%	88
Nurse/ Midwife Specialist & AN/MP	2	4	6	8	7	+2	+1	-0	+4	+5	+89.6%	8
Staff Nurse/ Staff Midwife	249	255	262	260	257	+7	-5	-3	+2	+8	+0.7%	286
Public Health Nurse	2	2	3	3	3	+1	+0	-0	+1	+1	+41.1%	4
Nursing/ Midwifery other		2	2	2	1	-0	-1	-1	-1	+1	-54.0%	1
Nursing & Midwifery	330	350	362	355	352	+12	-10	-3	+2	+22	+0.7%	387
Dietitians	1	3	4	4	4	+1	+0	+0	+1	+1	+32.6%	4
Occupational Therapists	9	7	7	8	7	-1	+1	-1	+0	+0	+0.1%	10
Physiotherapists	8	11	12	13	13	+1	+1	+0	+2	+2	+16.8%	16
Podiatrists & Chiropodists	1										-100.0%	
Speech & Language Therapists	2	5	8	8	8	+3	+0	-0	+3	+3	+59.6%	9
Therapy Professions	21	26	30	32	31	+4	+2	-1	+6	+11	+21.5%	39
Health Science/ Diagnostics		1	1	1	1	-0	-0	-0	-0	+1	-9.0%	1
Social Workers	7	1	1	1	1	+0	+0	+0	+0	-5	+49.5%	2
Pharmacy	3	2	2	2	2	+0	-0	-0	+0	-1	+6.4%	3
Health & Social Care Professionals	30	30	34	37	36	+4	+2	-1	+6	+6	+20.5%	45
Management (VIII & above)	6	9	10	9	9	+1	-1	-0	-0	+3	-2.8%	9
Administrative/ Supervisory (V to VII)	20	31	35	29	28	+4	-7	-1	-3	+8	-11.0%	29
Clerical (III & IV)	70	65	87	80	78	+22	-9	-2	+13	+8	+19.9%	86
Management & Administrative	95	105	132	118	114	+27	-17	-4	+9	+19	+8.7%	124
Support	26	26	30	29	29	+4	-1	-1	+3	+3	+10.5%	32
Maintenance/ Technical	24	22	25	25	25	+3	+0	-0	+3	+1	+11.6%	25
General Support	50	48	54	54	54	+6	-1	-1	+5	+4	+11.0%	57
Home Help	395	393	400	396	394	+6	-6	-2	+0	-2	+0.1%	593
Health Care Assistants	556	517	517	500	492	-1	-25	-8	-26	-65	-5.0%	571
Care, other	20	35	30	35	35	-5	+5	-0	+0	+15	+0.8%	45
Patient & Client Care	972	946	946	931	921	+1	-26	-11	-25	-52	-2.6%	1,209



Older People Employment Report by Grade Group: JUL 2024

CHO 9

JUL 2024	WTE DEC 2019	WTE DEC 2022	WTE DEC 2023	WTE JUN 2024	WTE JUL 2024	WTE Change 2023	WTE Change 2024	WTE Change JUN 2024	WTE Change Dec 2022 to JUL 2024	WTE Change Dec 2019 to JUL 2024	% WTE Change Dec 2022 to JUL 2024	No. JUL 2024
Overall	870	976	1001	1005	1002	+25	+2	-2	+26	+133	+2.7%	1,126
Consultants	2	3	3	2	2	+0	-1	+0	-1	-0	-40.0%	2
Registrars	6	6	8	8	10	+1	+2	+2	+4	+4	+54.4%	12
SHO/ Interns	12	8	13	14	13	+5	-0	-1	+4	+1	+55.1%	15
Medical/ Dental, other	1									-1	-100.0%	
Medical & Dental	20	17	23	24	24	+6	+1	+0	+7	+4	+40.9%	29
Nurse/ Midwife Manager	75	79	85	88	89	+6	+4	+1	+10	+15	+13.0%	94
Nurse/ Midwife Specialist & ANMP	5	11	12	13	13	+1	+1	-0	+2	+8	+14.8%	14
Staff Nurse/ Staff Midwife	227	255	249	257	256	-6	+7	-0	+2	+29	+0.7%	278
Public Health Nurse	0	1				-1			-1	-0	-100.0%	
Nursing/ Midwifery other	1									-1	-100.0%	
Nursing & Midwifery	308	346	347	358	359	+1	+12	+1	+13	+51	+3.7%	386
<i>Dietitians</i>	6	10	11	11	11	+1	-0	-0	+1	+1	+7.4%	14
<i>Occupational Therapists</i>	19	29	26	21	22	-3	-4	+1	-6	-6	-22.5%	23
<i>Physiotherapists</i>	25	42	45	33	34	+4	-12	+0	-8	-8	-19.2%	37
<i>Speech & Language Therapists</i>	4	8	8	10	10	+0	+3	+1	+3	+3	+38.8%	12
Therapy Professions	54	88	89	75	77	+1	-12	+2	-11	+23	-12.2%	86
Health Science/ Diagnostics	1	1	1	1	1	+0	+0	+0	+0	-0	+0.0%	2
Social Care	1	1	0	0	0	-1	+0	+0	-1	-1	-61.6%	1
Social Workers	21	19	17	17	17	-2	+0	+0	-2	-4	-8.4%	20
Psychologists		1	1	1	1	-0	+0	+0	-0	+1	-21.9%	1
Pharmacy	3	4	4	5	5	+0	+1	+0	+1	+2	+28.6%	6
H&SC, Other	0	1	3	4	4	+3	+1	+0	+3	+3	+537.5%	4
Health & Social Care Professionals	81	114	115	103	105	+1	-10	+2	-9	+24	-8.1%	120
Management (VIII & above)	9	13	14	13	12	+1	-2	-1	-1	+3	-4.0%	13
Administrative/ Supervisory (V to VII)	15	27	27	29	28	+0	+1	-1	+1	+13	+4.2%	30
Clerical (III & IV)	40	56	58	59	59	+3	+1	-0	+3	+19	+5.6%	68
Management & Administrative	64	96	100	101	99	+4	-0	-2	+4	+36	+3.9%	111
Support	118	119	111	111	110	-8	-1	-1	-9	-8	-7.6%	129
Maintenance/ Technical	2	2	2	2	2	+0	+0	+0	+0	+0	+0.0%	3
General Support	121	122	114	114	113	-8	-1	-1	-9	-8	-7.5%	132
Health Care Assistants	270	275	296	299	297	+21	+1	-2	+22	+27	+8.0%	340
Care, other	6	6	7	6	6	+0	-1	-0	-1	-0	-8.3%	8
Patient & Client Care	276	281	302	305	303	+21	+0	-2	+21	+27	+7.6%	348



Older People Employment Report by Grade Group: JUL 2024

other Community Services

JUL 2024	WTE DEC 2019	WTE DEC 2022	WTE DEC 2023	WTE JUN 2024	WTE JUL 2024	WTE Change 2023	WTE Change 2024	WTE Change JUN 2024	WTE Change Dec 2022 to JUL 2024	WTE Change Dec 2019 to JUL 2024	% WTE Change Dec 2022 to JUL 2024	No. JUL 2024
Overall	74	95	128	127	124	+32	-3	-3	+29	+50	+30.7%	136
Nurse/ Midwife Manager		2	3	3	3	+1	+0	+0	+1	+3	+50.0%	3
Nursing & Midwifery		2	3	3	3	+1	+0	+0	+1	+3	+50.0%	3
Health Science/ Diagnostics	1									-1	-100.0%	
Social Care			1	1	1	+1	+0	+0	+1	+1	-100.0%	1
Health & Social Care Professionals	1		1	1	1	+1	+0	+0	+1	+0	-100.0%	1
Management (VIII & above)	19	19	27	25	23	+7	-4	-2	+4	+4	+19.1%	25
Administrative/ Supervisory (V to VII)	23	40	42	42	41	+2	-0	-1	+1	+18	+3.6%	45
Clerical (III & IV)	31	33	54	56	55	+21	+1	-1	+22	+24	+68.1%	61
Management & Administrative	73	92	123	123	120	+31	-3	-3	+28	+46	+29.9%	131
Health Care Assistants	0	0				-0			-0	-0	-100.0%	
Care, other		1	1	1	1	+0	+0	+0	+0	+1	+1.2%	1
Patient & Client Care	0	1	1	1	1	-0	+0	+0	-0	+1	-22.3%	1



Older People Employment Report by Grade Group: JUL 2024

JUL 2024	WTE DEC 2019	WTE DEC 2022	WTE DEC 2023	WTE JUN 2024	WTE JUL 2024	WTE Change 2023	WTE Change 2024	WTE Change JUN 2024	WTE Change Dec 2022 to JUL 2024	WTE Change Dec 2019 to JUL 2024	% WTE Change Dec 2022 to JUL 2024	No. JUL 2024
Overall	13,239	13,947	14,154	14,221	14,066	+207	-88	-155	+119	+827	0.85%	16,954
Consultant Medicine	4	7	5	5	5	-1	-0	+0	-2	+1	-22.87%	7
Consultants	4	7	5	5	5	-1	-0	+0	-2	+1	-22.87%	7
Registrar	7	6	9	12	14	+2	+5	+1	+7	+7	114.37%	15
Senior Registrar	1	1	1	1	1	-0	+0	+0	-0	+0	-3.85%	1
Specialist Registrar	2	2	1	1	1	-1	+0	+0	-1	-1	-37.19%	3
Registrars	10	10	11	14	16	+1	+6	+2	+7	+7	69.68%	19
Senior House Officer	15	12	18	18	19	+6	+1	+1	+6	+4	53.91%	21
SHO/ Interns	15	12	18	18	19	+6	+1	+1	+6	+4	53.91%	21
Other Medical	95	98	85	79	78	-14	-7	-1	-21	-18	-20.86%	148
Medical/ Dental, other	95	98	85	79	78	-14	-7	-1	-21	-18	-20.86%	148
Medical & Dental	124	126	118	116	118	-8	-1	+2	-9	-6	-7.05%	195
Clinical Nurse/ Midwife Manager 1	176	151	161	174	178	+11	+16	+4	+27	+1	17.99%	187
Clinical Nurse/ Midwife Manager 2	314	365	393	399	400	+28	+7	+1	+35	+87	9.58%	425
Clinical Nurse/ Midwife Manager 3	21	18	23	22	23	+5	+0	+0	+5	+2	29.53%	24
Director Nursing/Midwifery, Assistant	102	106	129	119	116	+23	-12	-2	+11	+15	10.18%	122
Director of Nursing/Midwifery	98	98	105	104	104	+7	-1	-0	+5	+5	5.33%	105
Nurse/ Midwife Manager	711	738	811	818	821	+73	+10	+3	+83	+110	11.29%	863
Advanced Nurse/ Midwife Practitioner	4	23	28	28	28	+5	+1	+0	+6	+24	24.62%	29
Adv. Nurse/ Midwife, Candidate	7	17	28	25	26	+11	-2	+1	+9	+19	54.14%	27
Clinical Nurse/ Midwife Specialist	16	35	55	56	57	+20	+2	+1	+21	+41	60.61%	60
Nurse/ Midwife Specialist & AN/MP	26	74	111	109	110	+36	-0	+2	+36	+84	48.23%	116
Staff Midwives		1	2	2	2	+1	+0	+0	+1	+2	95.24%	2
Staff Nurse [Intellectual Disability]		3	2	3	3	-1	+1	+0	+0	+3	0.33%	3
Staff Nurse [Psychiatric]	4	4	4	4	4	-0	+0	+0	+0	+1	2.54%	5
Staff Nurses [General/ Children's]	2,571	2,729	2,692	2,739	2,722	-37	+30	-17	-7	+151	-0.26%	3,078
Staff Nurse/ Staff Midwife	2,575	2,737	2,700	2,748	2,731	-38	+32	-17	-6	+156	-0.22%	3,088
Public Health Nurse	14	13	11	11	11	-1	-0	+0	-2	-4	-14.68%	12
Public Health Nurse	14	13	11	11	11	-1	-0	+0	-2	-4	-14.68%	12
Nursing/ Midwifery awaiting registration	1	1	7	1	1	+7	-6	+0	+0	+0	2.04%	1
Post-registration Nurse/ Midwife Student	1									-1	-100.00%	
Nursing/ Midwifery Student	2	1	7	1	1	+7	-6	+0	+0	-1	2.04%	1
Nursing Education/Clinical	1	3	3	3	2	-0	-1	-1	-1	+1	-36.00%	2
Nursing/ Midwifery other	1	3	3	3	2	-0	-1	-1	-1	+1	-36.00%	2
Nursing & Midwifery	3329	3566	3643	3690	3676	+77	+33	-14	+110	+347	3.09%	4,082
Dietitians	16	25	30	34	33	+5	+3	-0	+8	+17	31.19%	40
Occupational Therapists	113	125	144	140	137	+19	-6	-2	+12	+24	9.77%	156
Physiotherapists	123	152	163	151	150	+11	-13	-1	-3	+27	-1.71%	172
Podiatrists & Chiropodists	12	3	5	5	5	+1	+0	-0	+1	-7	43.57%	7
Speech & Language Therapists	23	34	43	41	41	+9	-1	+0	+7	+18	22.10%	47
Therapy Professions	288	340	385	370	367	+45	-18	-4	+26	+79	7.79%	422
Clinical Engineering		1	1	1	1	-0	-0	-0	-0	+1	-9.00%	1
Radiographers	6	4	4	4	3	+0	-0	-0	-0	-2	-2.54%	6
Vascular Physiologists	0	0	0	0	0	+0	+0	+0	+0	-0	0.00%	1
Health Science/ Diagnostics	6	5	5	5	5	-0	-0	-0	-0	-2	-3.81%	8
Social Care	3	2	3	3	3	+0	+0	+0	+0	-0	17.70%	4
Social Care	3	2	3	3	3	+0	+0	+0	+0	-0	17.70%	4
Social Workers	98	69	52	53	51	-18	-0	-2	-18	-47	-26.12%	59
Social Workers	98	69	52	53	51	-18	-0	-2	-18	-47	-26.12%	59
Psychologists	2	4	4	4	4	+0	+1	+0	+1	+2	24.29%	6
Psychologists	2	4	4	4	4	+0	+1	+0	+1	+2	24.29%	6
Pharmacists	13	14	14	15	14	+0	-1	-1	-0	+1	-1.85%	22
Pharmacy Technicians	3	5	6	7	7	+0	+1	+0	+1	+4	19.05%	7
Pharmacy	15	20	20	21	20	+0	+0	-1	+1	+5	3.99%	29
Other Health & Social Care	0	2	24	23	23	+22	-1	+0	+20	+22	854.81%	24

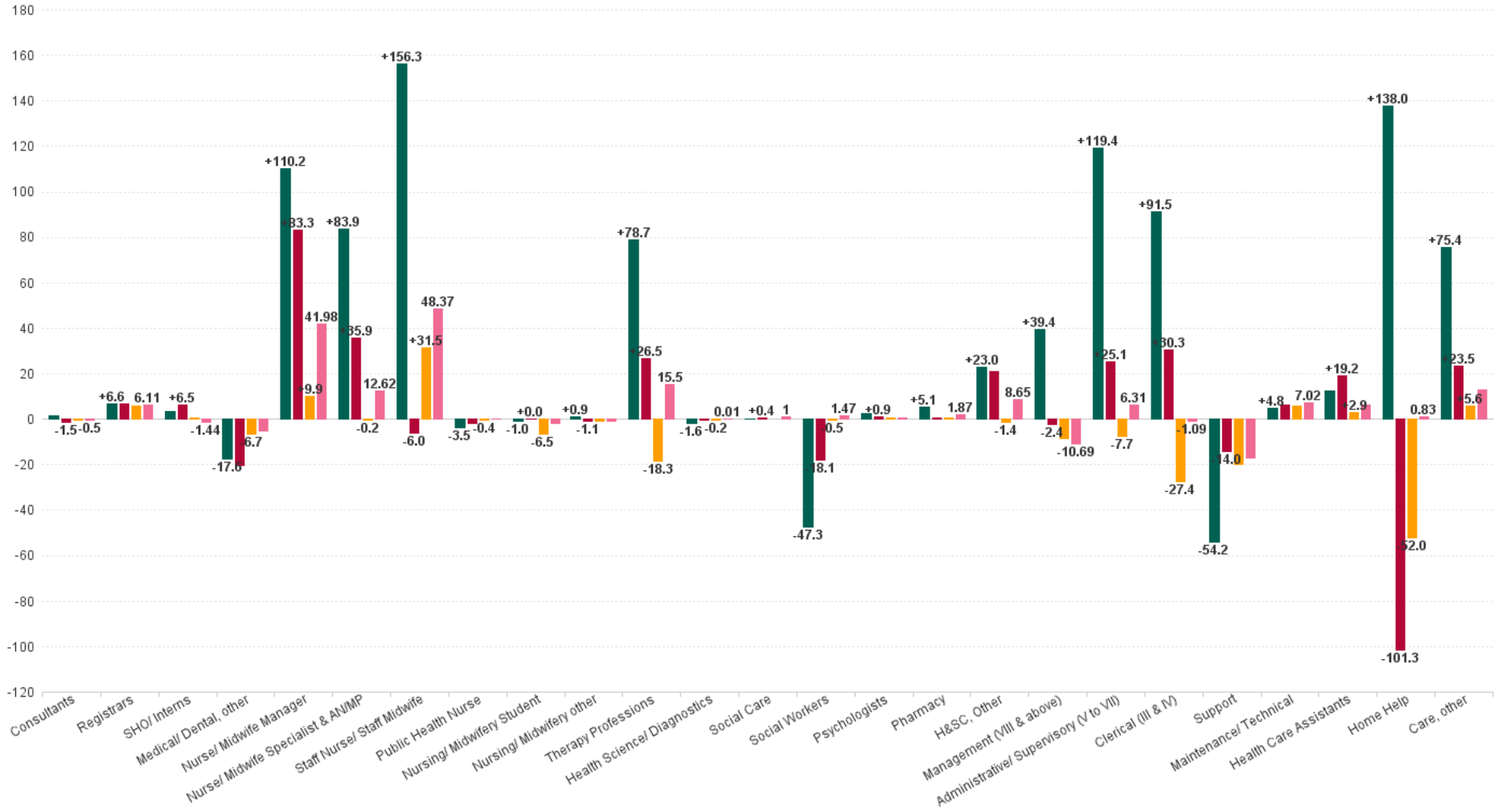


JUL 2024	WTE DEC 2019	WTE DEC 2022	WTE DEC 2023	WTE JUN 2024	WTE JUL 2024	WTE Change 2023	WTE Change 2024	WTE Change JUN 2024	WTE Change Dec 2022 to JUL 2024	WTE Change Dec 2019 to JUL 2024	% WTE Change Dec 2022 to JUL 2024	No. JUL 2024
Overall	13,239	13,947	14,154	14,221	14,066	+207	-88	-155	+119	+827	0.85%	16,954
Play Therapists/ Specialists	1	1	2	2	2	+1	+0	+0	+1	+1	51.52%	2
H&SC, Other	1	3	26	24	24	+22	-1	+0	+21	+23	619.53%	26
Health & Social Care Professionals	414	443	493	480	474	+50	-19	-6	+31	+60	7.05%	554
Executive Management	12	14	17	14	14	+3	-3	+0	+0	+2	0.50%	14
Senior Management (VIII & GM)	63	102	105	102	100	+3	-5	-2	-2	+37	-2.42%	105
Management (VIII & above)	75	116	122	116	114	+6	-8	-2	-2	+39	-2.07%	119
Middle Management (V-VII)	168	263	296	294	288	+33	-8	-6	+25	+120	9.56%	304
Other Administrative	1									-1	-100.00%	
Administrative/ Supervisory (V to VII)	169	263	296	294	288	+33	-8	-6	+25	+119	9.56%	304
General Administrative (III & IV)	570	631	689	672	662	+58	-27	-10	+30	+91	4.81%	755
Clerical (III & IV)	570	631	689	672	662	+58	-27	-10	+30	+91	4.81%	755
Management & Administrative	813	1010	1107	1082	1064	+96	-43	-18	+53	+250	5.25%	1,178
Catering	223	217	229	221	221	+12	-8	+0	+4	-1	1.79%	243
Household Services	461	441	431	433	429	-10	-2	-4	-12	-32	-2.75%	502
Other Support	32	27	22	19	18	-5	-4	-1	-9	-14	-34.08%	22
Portering	81	71	80	75	74	+9	-6	-1	+4	-7	5.04%	78
Support	797	757	762	748	743	+6	-20	-6	-14	-54	-1.85%	845
Maintenance	95	90	90	96	96	+0	+6	+0	+6	+1	6.82%	99
Technical Services		4	4	4	4	+0	+0	+0	+0	+4	0.00%	4
Maintenance/ Technical	95	94	94	100	100	+0	+6	+0	+6	+5	6.53%	103
General Support	892	851	857	848	843	+6	-14	-6	-8	-49	-0.92%	948
Home Helps	3,448	3,687	3,638	3,665	3,586	-49	-52	-80	-101	+138	-2.75%	5,055
Home Help	3,448	3,687	3,638	3,665	3,586	-49	-52	-80	-101	+138	-2.75%	5,055
Attendant/ Aide	2,328	1,632	1,531	1,432	1,411	-101	-120	-22	-221	-918	-13.56%	1,647
Health Care Assistant/ Care Assistant	1,729	2,378	2,470	2,601	2,593	+93	+122	-8	+215	+864	9.05%	2,944
Health & Social Care Assistants	22	63	87	89	88	+24	+1	-1	+25	+66	39.87%	93
Health Care Assistants	4,079	4,072	4,089	4,122	4,091	+16	+3	-31	+19	+12	0.47%	4,684
Home Care Services	84	143	164	172	171	+21	+7	-1	+28	+87	19.58%	180
Other Care Grades	22	23	21	23	22	-2	+1	-0	-1	+0	-2.52%	29
Pastoral Care	32	23	22	20	20	-1	-2	-1	-3	-12	-12.86%	46
Workshop Services	2	4	4	4	3	+0	-1	-1	-1	+1	-26.72%	3
Care, other	140	192	210	219	216	+18	+6	-3	+24	+75	12.24%	258
Patient & Client Care	7667	7951	7936	8006	7893	-15	-43	-113	-59	+226	-0.74%	9,997



WTE Change by Staff Category

■ WTE change since DEC 2019 ■ WTE change since DEC 2022 ■ WTE change since DEC 2023 ■ WTE change since JUL 2023



Older People Employment Report by WTE, Headcount, Gender, Full-Time / Part-Time etc. JUL 2024

JUL 2024	WTE JUL 2024	No JUL 2024	WTE : No	% Male	% Female	Male WTE : No.	Female WTE : No	Perm Count %	Perm Count Male %	Perm Count Female %	Fulltime Count %	Part time Count %	FT Count Male %	FT Count Female %
Total	14,066	16,954	1:0.8	14.65%	85.35%	1:0.9	1:0.8	89.38%	12.75%	76.62%	52.91%	47.09%	76.29%	48.89%
Consultants	5.06	7	1:0.7	28.57%	71.43%	1:0.5	1:0.8	85.71%	14.29%	71.43%	42.86%	57.14%		60.00%
Medical/ Dental, other	77.82	148	1:0.5	60.14%	39.86%	1:0.5	1:0.6	60.14%	35.81%	24.32%	26.35%	73.65%	22.47%	32.20%
Registrars	13.87	15	1:0.8	66.67%	60.00%	1:0.9	1:0.8	33.33%	13.33%	20.00%	120.00%	6.67%	100.00%	88.89%
SHO/ Interns	18.5	21	1:0.9	47.62%	52.38%	1:0.9	1:0.8	9.52%	9.52%		100.00%		100.00%	100.00%
Registrars	2.25	4	1:0.8	250.00%	225.00%	1:0.9	1:0.8	125.00%	50.00%	75.00%	450.00%	25.00%	100.00%	88.89%
Medical & Dental	118	195	1:0.6	56.92%	43.08%	1:0.6	1:0.6	52.31%	29.74%	22.56%	41.54%	58.46%	36.04%	48.81%
Nurse/ Midwife Specialist & AN/MP	53.7	56	1:1	14.29%	192.86%	1:1	1:0.9	191.07%	12.50%	178.57%	200.00%	7.14%	100.00%	96.30%
Nurse/ Midwife Manager	600.7	636	1:1	11.01%	124.69%	1:1	1:0.9	131.92%	10.22%	121.70%	118.71%	16.98%	94.29%	86.89%
Nurse/ Midwife Specialist & AN/MP	56.63	60	1:1	13.33%	180.00%	1:1	1:0.9	178.33%	11.67%	166.67%	186.67%	6.67%	100.00%	96.30%
Nurse/ Midwife Manager	220.11	227	1:1	30.84%	349.34%	1:1	1:0.9	369.60%	28.63%	340.97%	332.60%	47.58%		86.89%
Nursing/ Midwifery other	1.92	2	1:1		100.00%	1:	1:1	100.00%		100.00%	100.00%			100.00%
Nursing/ Midwifery Student	1	1	1:1	100.00%		1:1	1:	100.00%	100.00%		100.00%		100.00%	
Public Health Nurse	10.69	12	1:0.9		100.00%	1:	1:0.9	100.00%		100.00%	66.67%	33.33%		66.67%
Staff Nurse/ Staff Midwife	2,731.2	3,088	1:0.9	9.07%	90.93%	1:1	1:0.9	88.70%	7.97%	80.73%	69.37%	30.63%	90.36%	67.27%
Nursing & Midwifery	3,676	4,082	1:0.9	8.79%	91.21%	1:1	1:0.9	90.64%	7.81%	82.83%	73.98%	26.02%	91.36%	72.31%
Health Science/ Diagnostics	0.91	1	1:0.6	200.00%	600.00%	1:0.7	1:0.5	700.00%	200.00%	500.00%	200.00%	600.00%	50.00%	16.67%
Therapy Professions	170.37	196	1:0.9	23.98%	191.33%	1:1	1:0.9	206.63%	22.45%	184.18%	167.35%	47.96%	93.62%	75.73%
H&SC, Other	22.82	24	1:0.9	12.50%	95.83%	1:0.8	1:0.9	108.33%	12.50%	95.83%	95.83%	12.50%	66.67%	91.30%
Pharmacy	20.31	29	1:0.7	24.14%	75.86%	1:0.6	1:0.7	82.76%	20.69%	62.07%	58.62%	41.38%	57.14%	59.09%
Therapy Professions	149.88	172	1:0.9	27.33%	218.02%	1:1	1:0.9	235.47%	25.58%	209.88%	190.70%	54.65%	93.62%	75.73%
H&SC, Other	1.5	2	1:0.9	150.00%	1,150.00%	1:0.8	1:0.9	1,300.00%	150.00%	1,150.00%	1,150.00%	150.00%	66.67%	91.30%
Therapy Professions	4.91	7	1:0.9	671.43%	5,357.14%	1:1	1:0.9	5,785.71%	628.57%	5,157.14%	4,685.71%	1,342.86%	93.62%	75.73%
Psychologists	4.35	6	1:0.7	16.67%	83.33%	1:0.5	1:0.8	100.00%	16.67%	83.33%	50.00%	50.00%		60.00%
Health Science/ Diagnostics	3.46	6	1:0.6	33.33%	100.00%	1:0.7	1:0.5	116.67%	33.33%	83.33%	33.33%	100.00%	50.00%	16.67%
Social Care	2.66	4	1:0.7	25.00%	75.00%	1:1	1:0.6	100.00%	25.00%	75.00%	25.00%	75.00%	100.00%	
Social Workers	51.1	59	1:0.9	10.17%	89.83%	1:0.9	1:0.9	91.53%	10.17%	81.36%	74.58%	25.42%	100.00%	71.70%
Therapy Professions	41.38	47	1:0.9	100.00%	797.87%	1:1	1:0.9	861.70%	93.62%	768.09%	697.87%	200.00%	93.62%	75.73%
Health Science/ Diagnostics	0.17	1	1:0.6	200.00%	600.00%	1:0.7	1:0.5	700.00%	200.00%	500.00%	200.00%	600.00%	50.00%	16.67%
Health & Social Care Professionals	474	554	1:0.9	12.09%	87.91%	1:0.9	1:0.8	94.95%	11.37%	83.57%	75.45%	24.55%	86.57%	73.92%
Management (VIII & above)	14	14	1:1	285.71%	564.29%	1:1	1:0.9	842.86%	278.57%	564.29%	850.00%		100.00%	100.00%
Clerical (III & IV)	661.7	755	1:0.9	10.20%	89.80%	1:1	1:0.9	92.72%	9.40%	83.31%	71.13%	28.87%	94.81%	68.44%
Administrative/ Supervisory (V to VII)	287.89	304	1:0.9	16.12%	83.88%	1:1	1:0.9	99.01%	16.12%	82.89%	85.86%	14.14%	93.88%	84.31%
Management (VIII & above)	99.93	105	1:1	38.10%	75.24%	1:1	1:0.9	112.38%	37.14%	75.24%	113.33%		100.00%	100.00%
Management & Administrative	1,064	1,178	1:0.9	14.09%	85.91%	1:1	1:0.9	94.99%	13.50%	81.49%	77.84%	22.16%	95.78%	74.90%
Support	650.45	745	1:0.9	37.72%	75.70%	1:0.9	1:0.9	98.79%	32.35%	66.44%	70.47%	42.95%	83.99%	51.24%
Maintenance/ Technical	96.23	99	1:1	103.03%	1.01%	1:1	1:1	101.01%	100.00%	1.01%	98.99%	5.05%	95.10%	100.00%
Support	92.12	100	1:0.9	281.00%	564.00%	1:0.9	1:0.9	736.00%	241.00%	495.00%	525.00%	320.00%	83.99%	51.24%
Maintenance/ Technical	4	4	1:1	2,550.00%	25.00%	1:1	1:1	2,500.00%	2,475.00%	25.00%	2,450.00%	125.00%	95.10%	100.00%
General Support	843	948	1:0.9	40.40%	59.60%	1:0.9	1:0.9	88.19%	35.86%	52.32%	65.72%	34.28%	86.95%	51.33%
Health Care Assistants	4,091.49	4,684	1:0.9	21.54%	78.46%	1:0.9	1:0.9	92.42%	19.49%	72.93%	60.46%	39.54%	83.94%	54.01%
Care, other	170.91	180	1:0.8	40.56%	102.78%	1:0.6	1:0.9	125.00%	25.56%	99.44%	106.67%	36.67%	56.16%	81.62%
Home Help	3,585.65	5,055	1:0.7	6.25%	93.75%	1:0.8	1:0.7	85.38%	5.22%	80.16%	17.55%	82.45%	28.16%	16.84%
Care, other	44.83	78	1:0.8	93.59%	237.18%	1:0.6	1:0.9	288.46%	58.97%	229.49%	246.15%	84.62%	56.16%	81.62%
Patient & Client Care	7,893	9,997	1:0.8	13.98%	86.02%	1:0.9	1:0.8	88.73%	12.23%	76.49%	39.12%	60.88%	69.89%	34.12%



JUL 2024	WTE JUL 2024	No. JUL 2024	WTE : No	% Male	% Female	Male WTE : No.	Female WTE : No	Perm Count %	Number Male %	Number Female %	Fulltime Count %	Part time Count %	FT Count Male %	FT Count Female %
Total	14,066	16,954	1:0.8	14.65%	85.35%	1:0.9	1:0.8	89.38%	12.75%	76.62%	52.91%	47.09%	76.29%	48.89%
CHO 1	2,221	2,620	1:0.8	13.05%	86.95%	1:0.9	1:0.8	77.86%	11.26%	66.60%	38.63%	61.37%	58.48%	35.65%
CHO 2	1,489	1,802	1:0.8	14.87%	85.13%	1:0.9	1:0.8	98.17%	14.15%	84.02%	56.05%	43.95%	85.45%	50.91%
CHO 3	1,359	1,633	1:0.8	14.15%	85.85%	1:0.9	1:0.8	89.16%	11.88%	77.28%	61.54%	38.46%	88.31%	57.13%
CHO 4	2,791	3,655	1:0.8	12.67%	87.33%	1:0.9	1:0.8	85.55%	9.99%	75.57%	36.94%	63.06%	62.20%	33.27%
CHO 5	1,688	2,037	1:0.8	10.65%	89.35%	1:0.9	1:0.8	97.74%	9.97%	87.78%	47.18%	52.82%	67.74%	44.73%
CHO 7	1,067	1,201	1:0.9	18.15%	81.85%	1:1	1:0.9	85.93%	14.24%	71.69%	72.52%	27.48%	89.91%	68.67%
CHO 8	1,487	1,840	1:0.8	12.93%	87.07%	1:0.9	1:0.8	91.58%	11.20%	80.38%	57.55%	42.45%	76.89%	54.68%
CHO 9	1,002	1,126	1:0.9	21.49%	78.51%	1:0.9	1:0.9	94.76%	19.89%	74.87%	75.75%	24.25%	87.60%	72.51%
other Community Services	124	136	1:0.9	24.26%	75.74%	1:1	1:0.9	96.32%	24.26%	72.06%	90.44%	9.56%	96.97%	88.35%
CHO 6	837	904	1:0.9	25.66%	74.34%	1:1	1:0.9	94.58%	23.89%	70.69%	80.31%	19.69%	87.93%	77.68%



Previous Month Summary

	% WTE change since JUN 2024	WTE change since JUN 2024	CHO 1	CHO 2	CHO 3	CHO 4	CHO 5	CHO 6	CHO 7	CHO 8	CHO 9	other Community Services
Total	-1.1%	-154.9	-10.1	-89.3	-7.1	-23.3	-1.4	+1.2	-0.5	-19.4	-2.1	-3.0
Consultants	+1.0%	+0.1			+0.1	+0.0		+0.0			+0.0	
Registrars	+12.0%	+1.7	-0.8		+0.9			+0.0			+1.6	
SHO/ Interns	+5.5%	+1.0			+2.1				+0.0		-1.2	
Medical/ Dental, other	-1.2%	-1.0	-0.4	-0.2	+0.0	+0.1	-0.3	+0.0	+0.0	-0.2		
Medical & Dental	+1.5%	+1.8	-1.1	-0.2	+3.1	+0.1	-0.3	+0.0	+0.0	-0.2	+0.4	
Nurse/ Midwife Manager	+0.4%	+2.9	-0.7	-0.5	+0.1	-1.1	-0.1	+1.4	+2.0	+0.7	+1.1	+0.0
Nurse/ Midwife Specialist & AN/MP	+1.5%	+1.6	+0.4	+0.5	+0.0	+1.2	-0.2	-0.0	+0.0	-0.2	-0.0	
Staff Nurse/ Staff Midwife	-0.6%	-17.2	-3.9	-2.1	-2.0	-5.5	-1.4	+1.0	-0.3	-2.5	-0.5	
Public Health Nurse	+0.5%	+0.1	+0.0	+0.0		+0.1	+0.0			-0.0		
Nursing/ Midwifery Student	+0.0%	+0.0							+0.0			
Nursing/ Midwifery other	-34.7%	-1.0	+0.0							-1.0		
Nursing & Midwifery	-0.4%	-13.6	-4.2	-2.1	-1.9	-5.3	-1.7	+2.5	+1.6	-3.1	+0.6	+0.0
Therapy Professions	-1.0%	-3.5	-2.7	-0.1	-0.4	-0.1	-1.1	+0.5	-1.2	-0.9	+2.4	
Health Science/ Diagnostics	-2.6%	-0.1		-0.1	+0.0	+0.0				-0.0	+0.0	
Social Care	+0.0%	+0.0				+0.0					+0.0	+0.0
Social Workers	-3.2%	-1.7	-0.1	-1.0	+0.0		-0.0	+0.0	-0.6	+0.0	+0.0	
Psychologists	+1.4%	+0.1	+0.0		+0.1		+0.0	+0.0			+0.0	
Pharmacy	-4.5%	-1.0		-0.0	+0.0	-0.7	-0.4	+0.3	+0.0	-0.1	+0.0	
H&SC, Other	+1.3%	+0.3	+0.6	+0.0		-0.1	-0.2	+0.0	+0.0		+0.0	
Health & Social Care Professionals	-1.2%	-5.9	-2.2	-1.2	-0.4	-0.9	-1.7	+0.8	-1.8	-1.0	+2.4	+0.0
Management (VIII & above)	-2.1%	-2.4	+0.0	-0.1	-0.1	+0.7	-0.1	-0.2	-0.0	-0.3	-0.7	-1.7
Administrative/ Supervisory (V to VII)	-1.9%	-5.7	-0.2	+0.0	-0.6	-1.2	-0.1	+0.1	-1.2	-1.0	-1.0	-0.6
Clerical (III & IV)	-1.5%	-10.1	-2.6	-1.6	-1.1	+0.6	+0.1	-0.4	-1.8	-2.5	-0.1	-0.7
Management & Administrative	-1.7%	-18.2	-2.8	-1.6	-1.8	+0.1	-0.1	-0.4	-3.0	-3.7	-1.8	-3.0



Support	-0.8%	-5.7	-0.3	-1.8	-0.7	-1.0	-0.5	-0.9	+1.4	-0.7	-1.2	
Maintenance/ Technical	+0.0%	+0.1	+0.0	-0.0	+0.1	+0.0	-0.0	+0.0	+0.0	-0.0	+0.0	
General Support	-0.7%	-5.7	-0.3	-1.8	-0.6	-1.0	-0.6	-0.9	+1.5	-0.8	-1.2	
Health Care Assistants	-0.7%	-30.7	-0.7	-10.4	-1.8	-6.5	-0.2	-0.7	+0.2	-8.5	-2.1	
Home Help	-2.2%	-79.7	+1.6	-71.6	-3.1	-9.8	+3.9		+1.1	-1.8		
Care, other	-1.3%	-3.0	-0.4	-0.5	-0.6	-0.1	-0.7	-0.0	-0.0	-0.2	-0.3	+0.0
Patient & Client Care	-1.4%	-113.3	+0.5	-82.5	-5.5	-16.4	+3.1	-0.7	+1.2	-10.6	-2.4	+0.0



Year on Year Summary

	% WTE change since JUL 2023	WTE change since JUL 2023	CHO 1	CHO 2	CHO 3	CHO 4	CHO 5	CHO 6	CHO 7	CHO 8	CHO 9	other Community Services
Total	+1.0%	+132.6	+80.2	-78.8	+83.1	+68.9	-28.1	-5.9	+67.1	-63.6	-3.3	+13.0
Consultants	-9.0%	-0.5			-0.5	+0.0		+1.0			-1.0	
Registrars	+61.0%	+6.1	+0.3		+3.9			+0.0			+2.0	
SHO/ Interns	-7.2%	-1.4			+1.0	-1.0			+0.0		-1.4	
Medical/ Dental, other	-6.0%	-5.0	-0.4	-3.6	+0.0	+1.4	-0.5	-1.0	-0.7	-0.2		
Medical & Dental	-0.7%	-0.8	-0.2	-3.6	+4.4	+0.4	-0.5	+0.0	-0.7	-0.2	-0.5	
Nurse/ Midwife Manager	+5.4%	+42.0	+1.9	+5.5	+1.8	+11.2	+7.8	+2.1	+7.7	-0.8	+3.8	+1.0
Nurse/ Midwife Specialist & AN/MP	+12.9%	+12.6	+3.4	-0.6	+3.0	-0.4	+1.3	+3.0	+0.9	+2.5	-0.5	
Staff Nurse/ Staff Midwife	+1.8%	+48.4	+6.4	+2.2	+11.3	+34.6	-12.2	+4.0	-0.7	-0.4	+3.2	
Public Health Nurse	-0.2%	-0.0	+0.0	+0.0			-0.2	+0.0		+1.2	-1.0	
Nursing/ Midwifery Student	-66.7%	-2.0						-2.0	+0.0			
Nursing/ Midwifery other	-33.3%	-1.0	+0.0							-1.0		
Nursing & Midwifery	+2.8%	+100.0	+11.7	+7.1	+16.1	+45.2	-5.1	+9.1	+7.9	+1.6	+5.5	+1.0
Therapy Professions	+4.4%	+15.5	+9.2	+3.8	+2.5	-3.6	+1.9	+3.4	-1.6	+11.9	-12.1	
Health Science/ Diagnostics	+0.2%	+0.0		-0.1	+0.0	+0.0				+0.1	+0.0	
Social Care	+60.2%	+1.0					+0.0				+0.0	+1.0
Social Workers	+3.0%	+1.5	+0.7	+1.0	-1.0		+1.2	-0.2	+0.3	+0.0	-0.5	
Psychologists	+13.3%	+0.5	+0.0		+0.0		+0.0	+0.5			+0.0	
Pharmacy	+10.1%	+1.9		+0.0	+0.0	-0.4	-0.4	+0.7	+0.0	+0.1	+2.0	
H&SC, Other	+55.2%	+8.7	+0.8	+3.0			+3.8	-2.0	+0.0		+3.0	
Health & Social Care Professionals	+6.5%	+29.0	+10.8	+7.6	+1.5	-0.2	+0.7	+4.4	-1.4	+12.1	-7.6	+1.0
Management (VIII & above)	-8.6%	-10.7	+0.0	-0.0	-0.2	-6.0	-0.1	+2.8	-2.0	-1.9	-1.7	-1.6
Administrative/ Supervisory (V to VII)	+2.2%	+6.3	+2.6	+1.9	-0.1	+9.5	-0.0	-1.1	-2.4	-6.8	-0.8	+3.5
Clerical (III & IV)	-0.2%	-1.1	-3.5	-5.0	+2.4	+4.8	-13.4	-1.7	+7.7	-5.6	+4.2	+9.1
Management & Administrative	-0.5%	-5.5	-0.9	-3.2	+2.1	+8.3	-13.6	+0.0	+3.4	-14.3	+1.6	+11.0
Support	-2.2%	-17.0	-4.7	-6.0	+6.3	-4.8	-12.0	-1.0	+4.4	-1.7	+2.5	
Maintenance/ Technical	+7.5%	+7.0	+0.0	-0.0	+3.9	-0.8	-0.0	+1.0	+1.0	+1.9	+0.0	



General Support	-1.2%	-10.0	-4.7	-6.0	+10.1	-5.5	-12.0	+0.0	+5.4	+0.2	+2.5	
Health Care Assistants	+0.2%	+6.2	-18.0	+2.3	+30.5	+16.4	-13.8	-18.5	+41.7	-30.8	-3.7	
Home Help	+0.0%	+0.8	+77.1	-82.0	+18.5	+1.8	+10.2		+9.7	-34.6		
Care, other	+6.3%	+12.8	+4.3	-1.1	-0.1	+2.4	+6.0	-1.0	+1.0	+2.3	-1.1	+0.0
Patient & Client Care	+0.3%	+19.9	+63.5	-80.8	+49.0	+20.6	+2.4	-19.5	+52.5	-63.1	-4.8	+0.0



Year to Date Summary

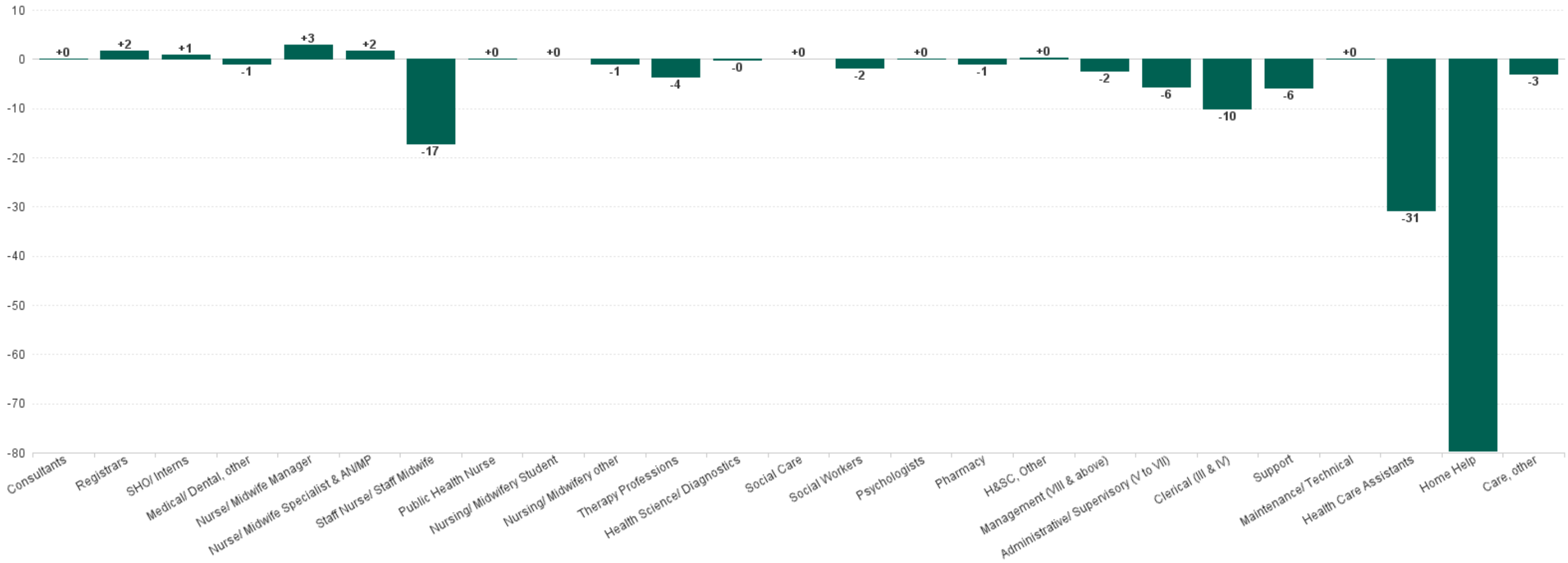
	% WTE change since DEC 2023	WTE change since DEC 2023	CHO 1	CHO 2	CHO 3	CHO 4	CHO 5	CHO 6	CHO 7	CHO 8	CHO 9	other Community Services
Total	-0.6%	-87.7	+19.8	-107.3	+39.4	+38.7	-45.1	-21.7	+42.2	-52.6	+1.8	-3.1
Consultants	-6.1%	-0.3			-0.3	+0.0		+1.0			-1.0	
Registrars	+53.4%	+5.6	+0.3		+2.9			+0.0			+2.5	
SHO/ Interns	+3.1%	+0.6			+1.0				+0.0		-0.5	
Medical/ Dental, other	-7.9%	-6.7	-5.2	-0.3	+0.0	+1.0	-1.0	-1.0	+0.0	-0.2		
Medical & Dental	-0.7%	-0.9	-5.0	-0.3	+3.6	+1.0	-1.0	+0.0	+0.0	-0.2	+1.0	
Nurse/ Midwife Manager	+1.2%	+9.9	+0.2	+3.3	+0.2	+6.7	-4.3	-2.3	+7.1	-5.2	+4.2	+0.0
Nurse/ Midwife Specialist & AN/MP	-0.2%	-0.2	+0.1	-0.5	+0.7	-1.7	-0.9	-0.0	-0.0	+1.5	+0.6	
Staff Nurse/ Staff Midwife	+1.2%	+31.5	-6.7	-10.8	+8.8	+29.3	-0.4	+2.0	+7.3	-5.3	+7.2	
Public Health Nurse	-3.3%	-0.4	+0.0	+0.0			-0.4	+0.0		+0.0		
Nursing/ Midwifery Student	-86.6%	-6.5					-4.5	-2.0		+0.0		
Nursing/ Midwifery other	-33.8%	-1.0	+0.0							-1.0		
Nursing & Midwifery	+0.9%	+33.4	-6.4	-8.0	+9.7	+29.5	-7.5	-0.3	+14.5	-9.9	+11.9	+0.0
Therapy Professions	-4.7%	-18.3	-3.6	+0.2	-0.6	-4.4	+3.1	-1.6	-1.0	+1.8	-12.2	
Health Science/ Diagnostics	-3.2%	-0.2		-0.1	+0.0	+0.0				-0.0	+0.0	
Social Care	+0.0%	+0.0				+0.0					+0.0	+0.0
Social Workers	-0.9%	-0.5	-1.2	-0.0	+0.0		-0.0	+1.0	-0.7	+0.0	+0.5	
Psychologists	+15.1%	+0.6	+0.5		+0.1		+0.0	+0.0			+0.0	
Pharmacy	+2.3%	+0.5		+0.0	+0.0	-0.4	-0.4	+0.3	+0.0	-0.1	+1.0	
H&SC, Other	-5.5%	-1.4	+0.8	-0.7			+0.0	-2.0	+0.0	+0.0	+0.5	



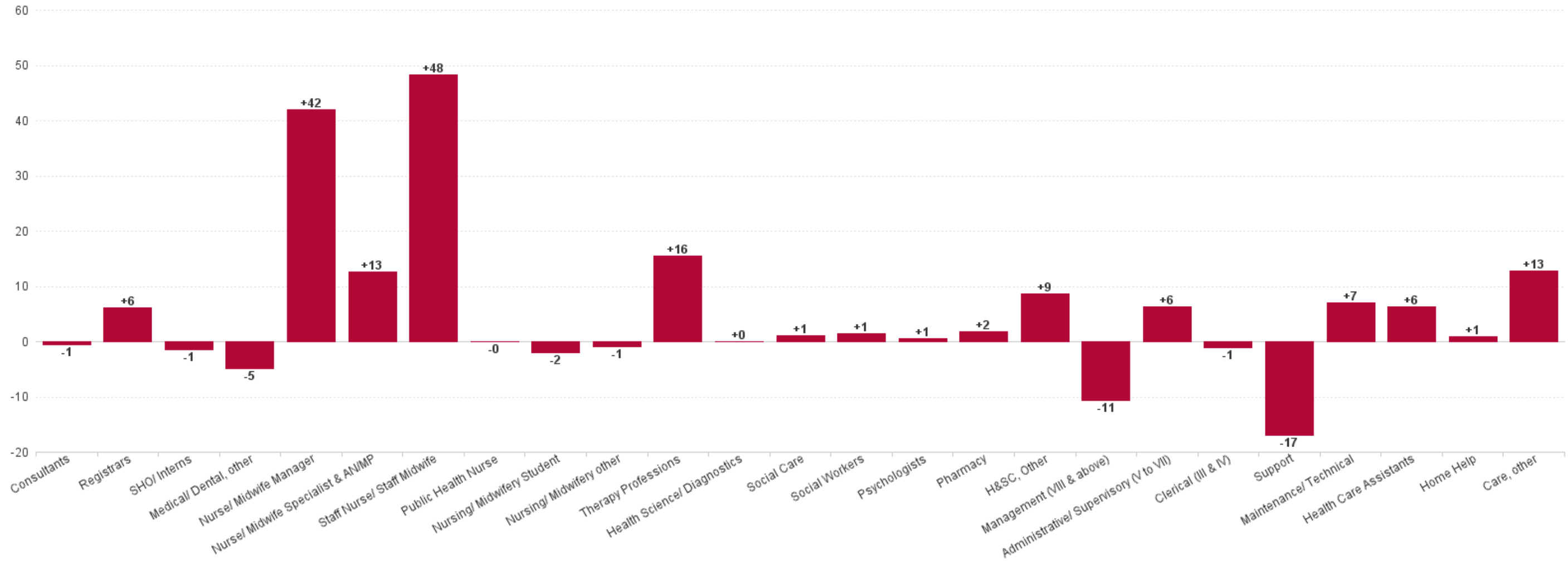
Health & Social Care Professionals	-3.9%	-19.3	-3.5	-0.7	-0.5	-4.8	+0.7	-0.3	-1.7	+1.7	-10.2	+0.0
Management (VIII & above)	-6.8%	-8.3	+1.0	-0.1	+0.8	-2.9	+0.9	-0.3	-1.1	-1.1	-1.8	-3.7
Administrative/ Supervisory (V to VII)	-2.6%	-7.7	-1.0	-0.6	-3.1	+9.1	+1.4	-4.7	-2.3	-7.1	+1.0	-0.4
Clerical (III & IV)	-4.0%	-27.4	-7.5	-0.3	-2.2	+0.3	-5.9	-3.4	-0.8	-9.3	+0.5	+1.1
Management & Administrative	-3.9%	-43.4	-7.6	-0.9	-4.6	+6.5	-3.6	-8.4	-4.1	-17.5	-0.2	-3.1
Support	-2.6%	-19.9	-9.7	-5.1	+6.4	-4.0	-6.1	-4.4	+5.1	-0.9	-1.1	
Maintenance/ Technical	+6.2%	+5.9	-0.2	-0.2	+4.1	+0.0	-0.0	+1.0	+1.0	+0.1	+0.0	
General Support	-1.6%	-14.0	-9.9	-5.3	+10.5	-4.0	-6.2	-3.4	+6.1	-0.9	-1.1	
Health Care Assistants	+0.1%	+2.9	-3.4	-17.2	+27.8	+20.5	-19.1	-9.2	+27.4	-25.1	+1.2	
Home Help	-1.4%	-52.0	+51.7	-75.8	-5.8	-10.6	-5.7		+0.1	-5.9		
Care, other	+2.7%	+5.6	+3.8	+0.9	-1.3	+0.7	-2.9	-0.0	-0.0	+5.1	-0.8	+0.0
Patient & Client Care	-0.5%	-43.5	+52.2	-92.1	+20.7	+10.6	-27.6	-9.3	+27.4	-25.8	+0.4	+0.0



Previous Month Summary Chart: Change since JUN 2024



Previous Year Summary Chart: Change since JUL 2023



YTD Summary Chart: Change since DEC 2023

