

# Older People Employment Report : JAN 2025

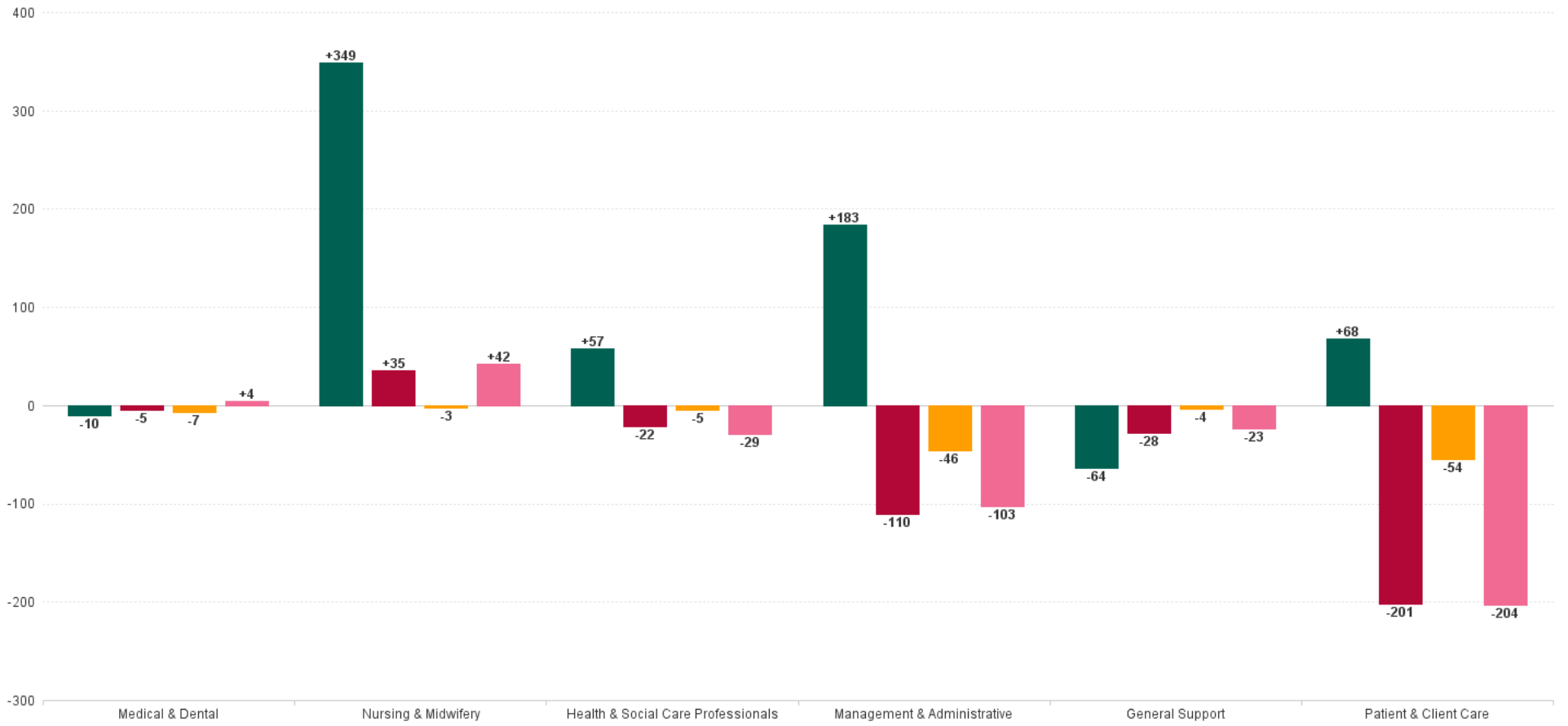
## Older People Employment Report by Staff Group

JAN 2025	WTE DEC 2019	WTE DEC 2023	WTE DEC 2024	WTE DEC 2024(1)	WTE JAN 2025	WTE Change 2024	WTE Change 2025	WTE Change DEC 2024	WTE Change Dec 2023 to JAN 2025	WTE Change Dec 2019 to JAN 2025	% WTE Change Dec 2023 to JAN 2025	No. JAN 2025
<b>Overall</b>	<b>13,239</b>	<b>14,154</b>	<b>13,941</b>	<b>13,941</b>	<b>13,823</b>	<b>-214</b>	<b>-118</b>	<b>-118</b>	<b>-331</b>	<b>+584</b>	<b>-2.3%</b>	<b>16,645</b>
Consultants	4	5	6	6	6	+1	-0	-0	+1	+2	+10.8%	8
Registrars	10	11	14	14	13	+3	-0	-0	+3	+4	+24.2%	14
SHO/ Interns	15	18	18	18	17	+0	-1	-1	-1	+2	-4.7%	18
Medical/ Dental, other	95	85	83	83	77	-2	-5	-5	-7	-18	-8.3%	149
<b>Medical &amp; Dental</b>	<b>124</b>	<b>118</b>	<b>120</b>	<b>120</b>	<b>114</b>	<b>+2</b>	<b>-7</b>	<b>-7</b>	<b>-5</b>	<b>-10</b>	<b>-4.0%</b>	<b>189</b>
Nurse/ Midwife Manager	711	811	812	812	815	+1	+3	+3	+4	+104	+0.5%	859
Nurse/ Midwife Specialist & AN/MP	26	111	107	107	106	-3	-1	-1	-4	+80	-4.0%	114
Staff Nurse/ Staff Midwife	2,575	2,700	2,749	2,749	2,744	+50	-5	-5	+45	+169	+1.7%	3,106
Public Health Nurse	14	11	9	9	9	-2	+0	+0	-2	-5	-19.5%	10
<i>Nursing/ Midwifery awaiting registration</i>	1	7	1	1	2	-7	+1	+1	-6	+1	-76.8%	2
<i>Post-registration Nurse/ Midwife Student</i>	1									-1	-100.0%	
Nursing/ Midwifery Student	2	7	1	1	2	-7	+1	+1	-6	-0	-76.8%	2
Nursing/ Midwifery other	1	3	2	2	2	-1	+0	+0	-1	+1	-31.0%	2
<b>Nursing &amp; Midwifery</b>	<b>3,329</b>	<b>3,643</b>	<b>3,680</b>	<b>3,680</b>	<b>3,678</b>	<b>+38</b>	<b>-3</b>	<b>-3</b>	<b>+35</b>	<b>+349</b>	<b>+1.0%</b>	<b>4,093</b>
<i>Dietitians</i>	16	30	33	33	33	+3	-0	-0	+3	+17	+9.9%	38
<i>Occupational Therapists</i>	113	144	140	140	138	-3	-2	-2	-6	+24	-4.1%	155
<i>Physiotherapists</i>	123	163	151	151	150	-12	-1	-1	-13	+27	-7.9%	173
<i>Podiatrists &amp; Chiropodists</i>	12	5	5	5	5	+0	-0	-0	-0	-7	-4.1%	6
<i>Speech &amp; Language Therapists</i>	23	43	40	40	40	-3	+0	+0	-2	+17	-5.6%	46
Therapy Professions	288	385	370	370	366	-15	-3	-3	-18	+79	-4.8%	418
Health Science/ Diagnostics	6	5	5	5	4	-0	-0	-0	-0	-2	-10.4%	8
Social Care	3	3	3	3	3	+0	-0	-0	-0	-0	-4.9%	4
Social Workers	98	52	51	51	51	-1	+0	+0	-0	-47	-1.0%	58
Psychologists	2	4	4	4	4	+1	+0	+0	+1	+2	+16.9%	6
Pharmacy	15	20	21	21	20	+1	-1	-1	+0	+5	+2.1%	30
H&SC, Other	1	26	22	22	22	-4	+0	+0	-3	+21	-13.3%	25
<b>Health &amp; Social Care Professionals</b>	<b>414</b>	<b>493</b>	<b>476</b>	<b>476</b>	<b>471</b>	<b>-17</b>	<b>-5</b>	<b>-5</b>	<b>-22</b>	<b>+57</b>	<b>-4.4%</b>	<b>549</b>
Management (VIII & above)	75	122	113	113	108	-9	-6	-6	-14	+33	-11.7%	109
Administrative/ Supervisory (V to VII)	169	296	282	282	273	-14	-9	-9	-23	+104	-7.7%	287
Clerical (III & IV)	570	689	647	647	616	-42	-31	-31	-73	+46	-10.6%	699
<b>Management &amp; Administrative</b>	<b>813</b>	<b>1,107</b>	<b>1,042</b>	<b>1,042</b>	<b>997</b>	<b>-65</b>	<b>-46</b>	<b>-46</b>	<b>-110</b>	<b>+183</b>	<b>-10.0%</b>	<b>1,095</b>
Support	797	762	730	730	726	-32	-4	-4	-36	-71	-4.7%	831
Maintenance/ Technical	95	94	103	103	102	+8	-0	-0	+8	+7	+8.6%	106
<b>General Support</b>	<b>892</b>	<b>857</b>	<b>833</b>	<b>833</b>	<b>829</b>	<b>-24</b>	<b>-4</b>	<b>-4</b>	<b>-28</b>	<b>-64</b>	<b>-3.3%</b>	<b>937</b>
Health Care Assistants	7,527	7,726	7,565	7,565	7,512	-161	-53	-53	-214	-15	-2.8%	9,517
Care, other	140	210	224	224	223	+14	-1	-1	+13	+83	+6.2%	265
<b>Patient &amp; Client Care</b>	<b>7,667</b>	<b>7,936</b>	<b>7,789</b>	<b>7,789</b>	<b>7,735</b>	<b>-147</b>	<b>-54</b>	<b>-54</b>	<b>-201</b>	<b>+68</b>	<b>-2.5%</b>	<b>9,782</b>



# WTE Change by Staff Category

■ WTE change since DEC 2019 ■ WTE change since DEC 2023 ■ WTE change since DEC 2024(1) ■ WTE change since JAN 2024

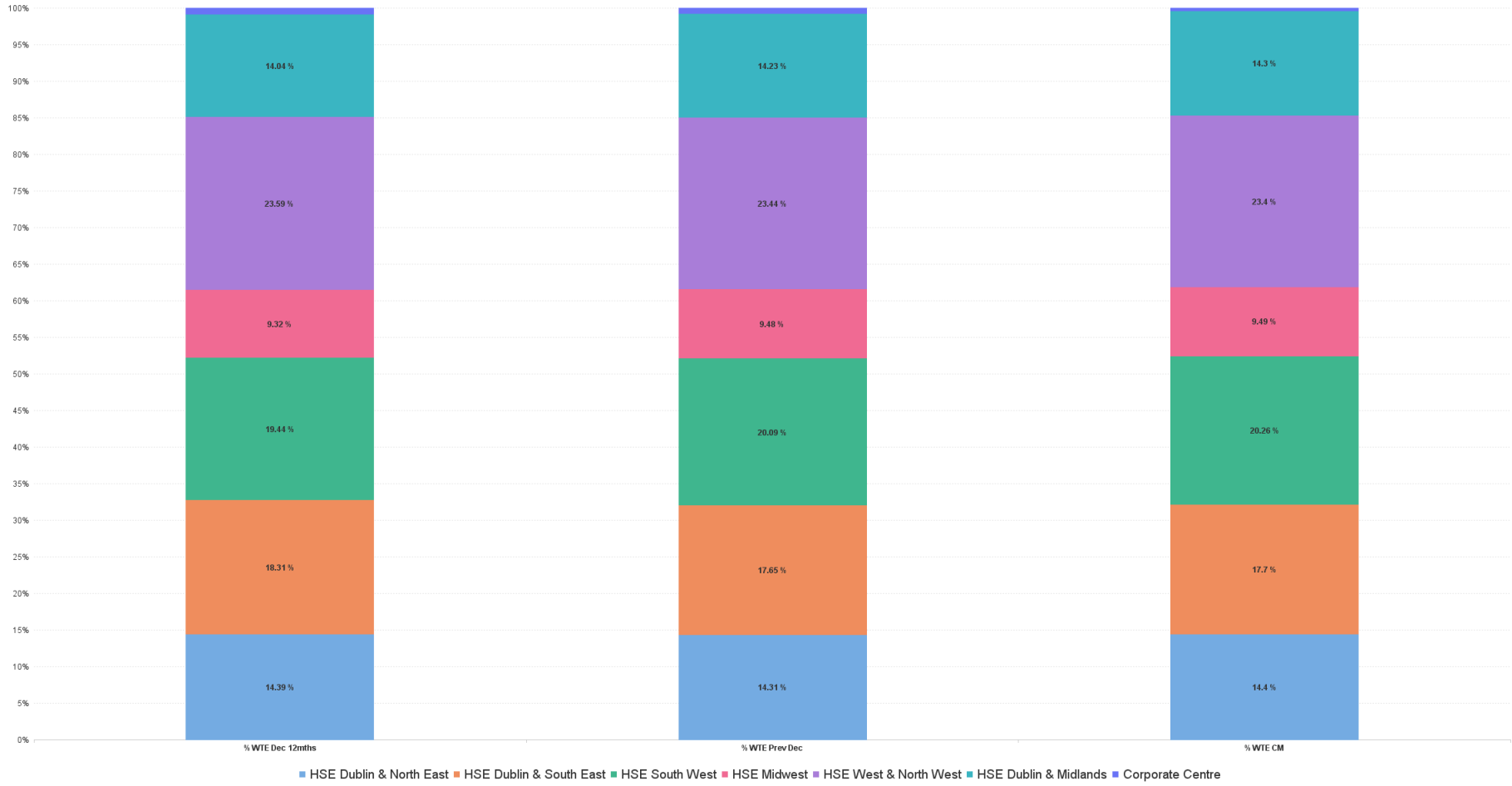


## Older People Report by Health Region: JAN 2025

JAN 2025	WTE DEC 2019	WTE DEC 2023	WTE DEC 2024	WTE DEC 2024(1)	WTE JAN 2025	WTE Change 2024	WTE Change 2025	WTE Change DEC 2024	WTE Change Dec 2023 to JAN 2025	WTE Change Dec 2019 to JAN 2025	% WTE Change Dec 2023 to JAN 2025	No. JAN 2025
<b>Overall</b>	<b>13,239</b>	<b>14,154</b>	<b>13,941</b>	<b>13,941</b>	<b>13,823</b>	<b>-214</b>	<b>-118</b>	<b>-118</b>	<b>-331</b>	<b>+584</b>	<b>-2.34%</b>	<b>16,645</b>
HSE Dublin & North East	1,826	2,036	1,995	1,995	1,991	-41	-5	-5	-46	+165	-2.23%	2,340
HSE Dublin & South East	2,477	2,592	2,460	2,460	2,447	-132	-13	-13	-145	-29	-5.58%	2,861
HSE South West	2,919	2,752	2,801	2,801	2,800	+49	-1	-1	+48	-118	1.75%	3,613
HSE Midwest	974	1,320	1,321	1,321	1,311	+2	-10	-10	-9	+337	-0.66%	1,584
HSE West & North West	3,053	3,339	3,268	3,268	3,235	-72	-33	-33	-105	+182	-3.13%	3,854
HSE Dublin & Midlands	1,917	1,987	1,984	1,984	1,977	-3	-7	-7	-10	+60	-0.52%	2,328
Corporate Centre	74	128	111	111	62	-17	-49	-49	-66	-12	-51.39%	65



### % Total by Health Region



## Older People Employment Report by HSE/S38: JAN 2025

JAN 2025	WTE DEC 2019	WTE DEC 2023	WTE DEC 2024	WTE DEC 2024(1)	WTE JAN 2025	WTE Change 2024	WTE Change 2025	WTE Change DEC 2024	WTE Change Dec 2023 to JAN 2025	WTE Change Dec 2019 to JAN 2025	% WTE Change Dec 2023 to JAN 2025	No. JAN 2025
<b>Overall</b>	<b>13,239</b>	<b>14,154</b>	<b>13,941</b>	<b>13,941</b>	<b>13,823</b>	<b>-214</b>	<b>-118</b>	<b>-118</b>	<b>-331</b>	<b>+584</b>	<b>-2.34%</b>	<b>16,645</b>
Health Service Executive	12,531	13,389	13,026	13,026	12,916	-362	-111	-111	-473	+384	-3.53%	15,617
Section 38 Voluntary Agencies	708	765	914	914	907	+149	-7	-7	+142	+199	18.56%	1,028



## Older People Employment Report by HSE: JAN 2025

JAN 2025	WTE DEC 2019	WTE DEC 2023	WTE DEC 2024	WTE DEC 2024(1)	WTE JAN 2025	WTE Change 2024	WTE Change 2025	WTE Change DEC 2024	WTE Change Dec 2023 to JAN 2025	WTE Change Dec 2019 to JAN 2025	% WTE Change Dec 2023 to JAN 2025	No. JAN 2025
<b>Total HSE</b>	<b>12,531</b>	<b>13,389</b>	<b>+13,026</b>	<b>13,026</b>	<b>12,916</b>	<b>-362</b>	<b>-111</b>	<b>-111</b>	<b>-473</b>	<b>+384</b>	<b>-3.53%</b>	<b>15,617</b>
Consultants	3	4	+4	4	4	+0	-0	-0	+0	+1	2.06%	5
Registrars	7	7	+11	11	10	+4	-0	-0	+4	+4	54.38%	11
SHO/ Interns	10	12	+11	11	10	-1	-1	-1	-2	+0	-15.40%	11
Medical/ Dental, other	93	83	+81	81	76	-1	-5	-5	-7	-17	-7.94%	147
<b>Medical &amp; Dental</b>	<b>113</b>	<b>105</b>	<b>+107</b>	<b>107</b>	<b>100</b>	<b>+2</b>	<b>-7</b>	<b>-7</b>	<b>-5</b>	<b>-13</b>	<b>-4.55%</b>	<b>174</b>
Nurse/ Midwife Manager	657	754	+735	735	741	-19	+6	+6	-13	+84	-1.75%	781
Nurse/ Midwife Specialist & AN/MP	26	110	+106	106	105	-3	-1	-1	-4	+79	-4.02%	113
Staff Nurse/ Staff Midwife	2,399	2,529	+2,520	2,520	2,512	-9	-8	-8	-17	+113	-0.67%	2,842
Public Health Nurse	14	11	+9	9	9	-2	+0	+0	-2	-5	-19.53%	10
Nursing/ Midwifery awaiting registration	1	7	+1	1	2	-7	+1	+1	-6	+1	-76.77%	2
Post-registration Nurse/ Midwife Student	1									-1	-100.00%	
Nursing/ Midwifery Student	2	7	+1	1	2	-7	+1	+1	-6	-0	-76.77%	2
Nursing/ Midwifery other	1	3	+2	2	2	-1	+0	+0	-1	+1	-31.03%	2
<b>Nursing &amp; Midwifery</b>	<b>3,100</b>	<b>3,414</b>	<b>+3,373</b>	<b>3,373</b>	<b>3,370</b>	<b>-41</b>	<b>-3</b>	<b>-3</b>	<b>-43</b>	<b>+271</b>	<b>-1.27%</b>	<b>3,750</b>
Dietitians	14	26	+28	28	28	+2	-0	-0	+1	+14	5.26%	32
Occupational Therapists	93	119	+107	107	107	-12	+0	+0	-12	+14	-9.98%	123
Physiotherapists	93	121	+120	120	118	-1	-2	-2	-3	+25	-2.65%	137
Podiatrists & Chiropodists	11	5	+5	5	4	+0	-0	-0	-0	-7	-4.27%	5
Speech & Language Therapists	19	38	+33	33	33	-5	+0	+0	-5	+15	-13.25%	38
Therapy Professions	230	309	+292	292	290	-17	-2	-2	-19	+60	-6.14%	335
Health Science/ Diagnostics	5	4	+4	4	3	-0	-0	-0	-1	-2	-15.99%	6
Social Care	3	3	+3	3	3	+0	-0	-0	-0	-0	-4.89%	4
Social Workers	84	37	+34	34	35	-2	+0	+0	-2	-50	-5.53%	38
Psychologists	2	3	+4	4	4	+1	+0	+0	+1	+2	19.51%	5
Pharmacy	11	14	+15	15	15	+1	-0	-0	+1	+4	3.97%	22
H&SC, Other	1	26	+22	22	22	-4	+0	+0	-3	+21	-13.25%	25
<b>Health &amp; Social Care Professionals</b>	<b>336</b>	<b>396</b>	<b>+374</b>	<b>374</b>	<b>372</b>	<b>-22</b>	<b>-2</b>	<b>-2</b>	<b>-24</b>	<b>+36</b>	<b>-6.05%</b>	<b>435</b>
Management (VIII & above)	73	118	+108	108	103	-10	-6	-6	-15	+30	-12.98%	104
Administrative/ Supervisory (V to VII)	149	266	+257	257	246	-9	-11	-11	-20	+97	-7.58%	259
Clerical (III & IV)	543	661	+619	619	588	-41	-31	-31	-73	+45	-11.02%	663
<b>Management &amp; Administrative</b>	<b>765</b>	<b>1,045</b>	<b>+985</b>	<b>985</b>	<b>937</b>	<b>-60</b>	<b>-48</b>	<b>-48</b>	<b>-108</b>	<b>+172</b>	<b>-10.36%</b>	<b>1,026</b>
Support	694	652	+616	616	613	-36	-3	-3	-38	-81	-5.90%	703
Maintenance/ Technical	85	84	+92	92	92	+8	+0	+0	+8	+7	9.59%	96
<b>General Support</b>	<b>780</b>	<b>736</b>	<b>+708</b>	<b>708</b>	<b>706</b>	<b>-28</b>	<b>-2</b>	<b>-2</b>	<b>-30</b>	<b>-74</b>	<b>-4.12%</b>	<b>799</b>
Health Care Assistants	7,304	7,487	+7,259	7,259	7,210	-227	-49	-49	-277	-94	-3.69%	9,174
Care, other	135	207	+221	221	221	+14	-0	-0	+14	+86	6.84%	259
<b>Patient &amp; Client Care</b>	<b>7,438</b>	<b>7,693</b>	<b>+7,480</b>	<b>7,480</b>	<b>7,431</b>	<b>-213</b>	<b>-49</b>	<b>-49</b>	<b>-262</b>	<b>-8</b>	<b>-3.41%</b>	<b>9,433</b>



## Older People Employment Report by S38 Voluntary Agencies: JAN 2025

JAN 2025	WTE DEC 2019	WTE DEC 2023	WTE DEC 2024	WTE DEC 2024(1)	WTE JAN 2025	WTE Change 2024	WTE Change 2025	WTE Change DEC 2024	WTE Change Dec 2023 to JAN 2025	WTE Change Dec 2019 to JAN 2025	% WTE Change Dec 2023 to JAN 2025	No. JAN 2025
<b>Total S38 Voluntary Agencies</b>	<b>708</b>	<b>765</b>	<b>914</b>	<b>914</b>	<b>907</b>	<b>+149</b>	<b>-7</b>	<b>-7</b>	<b>+142</b>	<b>+199</b>	<b>+18.6%</b>	<b>1,028</b>
Consultants	1	2	2	2	2	+1	+0	+0	+1	+1	+33.3%	3
Registrars	3	4	3	3	3	-1	+0	+0	-1	+0	-25.0%	3
SHO/ Interns	5	6	7	7	7	+1	+0	+0	+1	+2	+16.7%	7
Medical/ Dental, other	2	2	2	2	2	-1	+0	+0	-1	-1	-25.0%	2
<b>Medical &amp; Dental</b>	<b>11</b>	<b>14</b>	<b>14</b>	<b>14</b>	<b>14</b>	<b>+0</b>	<b>+0</b>	<b>+0</b>	<b>+0</b>	<b>+3</b>	<b>+0.0%</b>	<b>15</b>
Nurse/ Midwife Manager	54	57	77	77	74	+20	-3	-3	+17	+20	+29.8%	78
Nurse/ Midwife Specialist & AN/MP		1	1	1	1	+0	+0	+0	+0	+1	+0.0%	1
Staff Nurse/ Staff Midwife	176	171	229	229	233	+58	+3	+3	+62	+57	+36.0%	264
<b>Nursing &amp; Midwifery</b>	<b>230</b>	<b>229</b>	<b>307</b>	<b>307</b>	<b>307</b>	<b>+79</b>	<b>+0</b>	<b>+0</b>	<b>+79</b>	<b>+78</b>	<b>+34.3%</b>	<b>343</b>
Dietitians	3	4	6	6	6	+2	+0	+0	+2	+3	+40.1%	6
Occupational Therapists	20	25	33	33	30	+9	-3	-3	+6	+10	+24.2%	32
Physiotherapists	30	42	31	31	32	-11	+1	+1	-10	+3	-22.9%	36
Podiatrists & Chiropodists	1	0	0	0	0	+0	+0	+0	+0	-0	+0.0%	1
Speech & Language Therapists	4	4	7	7	7	+3	+0	+0	+3	+3	+60.1%	8
Therapy Professions	58	75	78	78	76	+2	-2	-2	+1	+18	+0.8%	83
Health Science/ Diagnostics	1	1	1	1	1	+0	+0	+0	+0	+0	+10.0%	2
Social Workers	14	15	17	17	17	+2	+0	+0	+2	+3	+10.1%	20
Psychologists	1	1	1	1	1	+0	+0	+0	+0	+0	+0.0%	1
Pharmacy	5	5	6	6	5	+0	-0	-0	-0	+1	-2.9%	8
<b>Health &amp; Social Care Professionals</b>	<b>78</b>	<b>97</b>	<b>102</b>	<b>102</b>	<b>99</b>	<b>+4</b>	<b>-2</b>	<b>-2</b>	<b>+2</b>	<b>+22</b>	<b>+2.1%</b>	<b>114</b>
Management (VIII & above)	2	4	5	5	5	+1	+0	+0	+1	+3	+25.0%	5
Administrative/ Supervisory (V to VII)	19	30	25	25	27	-4	+2	+2	-3	+8	-8.9%	28
Clerical (III & IV)	27	28	27	27	28	-1	+1	+1	-0	+1	-1.0%	36
<b>Management &amp; Administrative</b>	<b>49</b>	<b>62</b>	<b>58</b>	<b>58</b>	<b>60</b>	<b>-4</b>	<b>+2</b>	<b>+2</b>	<b>-2</b>	<b>+11</b>	<b>-3.1%</b>	<b>69</b>
Support	103	111	114	114	113	+3	-1	-1	+2	+10	+2.1%	128
Maintenance/ Technical	10	10	11	11	10	+1	-1	-1	+0	+0	+0.0%	10
<b>General Support</b>	<b>113</b>	<b>121</b>	<b>125</b>	<b>125</b>	<b>123</b>	<b>+4</b>	<b>-2</b>	<b>-2</b>	<b>+2</b>	<b>+10</b>	<b>+1.9%</b>	<b>138</b>
Health Care Assistants	223	240	306	306	302	+67	-4	-4	+62	+79	+26.0%	343
Care, other	5	4	3	3	2	-0	-1	-1	-1	-3	-33.3%	6
<b>Patient &amp; Client Care</b>	<b>229</b>	<b>243</b>	<b>309</b>	<b>309</b>	<b>304</b>	<b>+66</b>	<b>-5</b>	<b>-5</b>	<b>+61</b>	<b>+76</b>	<b>+25.1%</b>	<b>349</b>



## Older People Employment Report by Grade Group: JAN 2025

### HSE Dublin & North East

JAN 2025	WTE DEC 2019	WTE DEC 2023	WTE DEC 2024	WTE DEC 2024(1)	WTE JAN 2025	WTE Change 2024	WTE Change 2025	WTE Change DEC 2024	WTE Change Dec 2023 to JAN 2025	WTE Change Dec 2019 to JAN 2025	% WTE Change Dec 2023 to JAN 2025	No. JAN 2025
<b>Total HSE Dublin &amp; North East</b>	<b>1826</b>	<b>2036</b>	<b>1995</b>	<b>1995</b>	<b>1991</b>	<b>-41</b>	<b>-5</b>	<b>-5</b>	<b>-46</b>	<b>+165</b>	<b>-2.2%</b>	<b>2,340</b>
Consultants	2	3	3	3	3	+0	+0	+0	+1	+1	+20.0%	4
Registrars	6	8	9	9	8	+1	-0	-0	+1	+3	+8.5%	9
SHO/ Interns	12	13	13	13	12	-0	-0	-0	-1	+0	-6.5%	13
Medical/ Dental, other	5	4	4	4	4	+0	+0	+0	+0	-1	+0.0%	4
<b>Medical &amp; Dental</b>	<b>24</b>	<b>27</b>	<b>28</b>	<b>28</b>	<b>27</b>	<b>+1</b>	<b>-1</b>	<b>-1</b>	<b>+0</b>	<b>+3</b>	<b>+1.1%</b>	<b>30</b>
Nurse/ Midwife Manager	123	139	138	138	140	-1	+2	+2	+1	+17	+0.6%	149
Nurse/ Midwife Specialist & AN/MP	7	16	17	17	17	+1	+0	+0	+1	+11	+7.3%	19
Staff Nurse/ Staff Midwife	398	435	440	440	442	+5	+2	+2	+7	+44	+1.7%	482
Public Health Nurse	1	2				-2			-2	-1	-100.0%	
Nursing/ Midwifery other	1									-1	-100.0%	
<b>Nursing &amp; Midwifery</b>	<b>530</b>	<b>592</b>	<b>595</b>	<b>595</b>	<b>600</b>	<b>+3</b>	<b>+5</b>	<b>+5</b>	<b>+8</b>	<b>+70</b>	<b>+1.3%</b>	<b>650</b>
<i>Dietitians</i>	6	14	13	13	13	-1	+0	+0	-0	-0	-2.4%	15
<i>Occupational Therapists</i>	21	32	33	33	34	+1	+1	+1	+2	+2	+6.2%	37
<i>Physiotherapists</i>	28	53	44	44	43	-9	-1	-1	-10	-10	-18.4%	49
<i>Speech &amp; Language Therapists</i>	6	12	17	17	17	+5	+0	+0	+5	+5	+43.3%	20
Therapy Professions	61	110	107	107	107	-3	-0	-0	-3	+46	-2.6%	121
Health Science/ Diagnostics	1	1	1	1	1	+0	+0	+0	+0	-0	+10.0%	2
Social Care	1	0	0	0	0	+0	+0	+0	+0	-1	+0.0%	1
Social Workers	27	19	20	20	20	+1	-0	-0	+0	-7	+2.4%	23
Psychologists		1	1	1	1	+0	+0	+0	+0	+1	+0.0%	1
Pharmacy	4	4	5	5	5	+1	+0	+0	+1	+1	+12.4%	7
H&SC, Other	0	4	4	4	4	+0	+0	+0	+0	+4	+4.4%	5
<b>Health &amp; Social Care Professionals</b>	<b>95</b>	<b>140</b>	<b>138</b>	<b>138</b>	<b>138</b>	<b>-2</b>	<b>+0</b>	<b>+0</b>	<b>-2</b>	<b>+44</b>	<b>-1.2%</b>	<b>160</b>
Management (VIII & above)	12	17	15	15	15	-2	-0	-0	-2	+3	-12.2%	15
Administrative/ Supervisory (V to VII)	31	45	45	45	46	+0	+1	+1	+1	+15	+2.1%	49
Clerical (III & IV)	79	108	100	100	97	-8	-3	-3	-11	+19	-10.3%	113
<b>Management &amp; Administrative</b>	<b>122</b>	<b>170</b>	<b>161</b>	<b>161</b>	<b>158</b>	<b>-10</b>	<b>-2</b>	<b>-2</b>	<b>-12</b>	<b>+36</b>	<b>-7.2%</b>	<b>177</b>
Support	132	137	128	128	127	-10	-1	-1	-11	-5	-7.7%	149
Maintenance/ Technical	10	10	10	10	10	+0	-0	-0	-0	-0	-3.9%	11
<b>General Support</b>	<b>142</b>	<b>148</b>	<b>138</b>	<b>138</b>	<b>137</b>	<b>-10</b>	<b>-1</b>	<b>-1</b>	<b>-11</b>	<b>-5</b>	<b>-7.4%</b>	<b>160</b>
Health Care Assistants	898	937	909	909	904	-28	-5	-5	-33	+6	-3.5%	1,130
Care, other	16	22	26	26	26	+5	-0	-0	+5	+11	+20.8%	33
<b>Patient &amp; Client Care</b>	<b>914</b>	<b>959</b>	<b>936</b>	<b>936</b>	<b>930</b>	<b>-23</b>	<b>-5</b>	<b>-5</b>	<b>-29</b>	<b>+17</b>	<b>-3.0%</b>	<b>1,163</b>





## Older People Employment Report by Grade Group: JAN 2025

### HSE Dublin & South East

JAN 2025	WTE DEC 2019	WTE DEC 2023	WTE DEC 2024	WTE DEC 2024(1)	WTE JAN 2025	WTE Change 2024	WTE Change 2025	WTE Change DEC 2024	WTE Change Dec 2023 to JAN 2025	WTE Change Dec 2019 to JAN 2025	% WTE Change Dec 2023 to JAN 2025	No. JAN 2025
<b>Total HSE Dublin &amp; South East</b>	<b>2477</b>	<b>2592</b>	<b>2460</b>	<b>2460</b>	<b>2447</b>	<b>-132</b>	<b>-13</b>	<b>-13</b>	<b>-145</b>	<b>-29</b>	<b>-5.6%</b>	<b>2,861</b>
Consultants			1	1	1	+1	+0	+0	+1	+1	-100.0%	1
Registrars	1	1	1	1	1	+0	+0	+0	+0	+0	+0.0%	1
Medical/ Dental, other	13	16	14	14	14	-2	-0	-0	-2	+1	-12.6%	19
<b>Medical &amp; Dental</b>	<b>14</b>	<b>17</b>	<b>16</b>	<b>16</b>	<b>16</b>	<b>-1</b>	<b>-0</b>	<b>-0</b>	<b>-1</b>	<b>+2</b>	<b>-5.9%</b>	<b>21</b>
Nurse/ Midwife Manager	152	175	167	167	167	-7	-1	-1	-8	+15	-4.6%	175
Nurse/ Midwife Specialist & AN/MP	3	27	23	23	23	-4	+0	+0	-4	+20	-14.6%	25
Staff Nurse/ Staff Midwife	517	523	503	503	502	-20	-1	-1	-22	-16	-4.1%	554
Public Health Nurse	5	1	1	1	1	+0	+0	+0	+0	-4	+0.0%	1
<i>Nursing/ Midwifery awaiting registration</i>		2				-2			-2	-2	-100.0%	
Nursing/ Midwifery Student		2				-2			-2		-100.0%	
<b>Nursing &amp; Midwifery</b>	<b>676</b>	<b>727</b>	<b>694</b>	<b>694</b>	<b>692</b>	<b>-34</b>	<b>-2</b>	<b>-2</b>	<b>-36</b>	<b>+16</b>	<b>-4.9%</b>	<b>755</b>
<i>Dietitians</i>	6	7	8	8	8	+1	-0	-0	+1	+1	+9.1%	10
<i>Occupational Therapists</i>	32	34	35	35	33	+1	-2	-2	-1	-1	-3.4%	37
<i>Physiotherapists</i>	42	41	39	39	40	-2	+1	+1	-1	-1	-1.3%	46
<i>Podiatrists &amp; Chiropodists</i>	1	0	0	0	0	+0	+0	+0	+0	+0	+0.0%	1
<i>Speech &amp; Language Therapists</i>	9	10	8	8	8	-2	-1	-1	-2	-2	-24.7%	9
Therapy Professions	91	92	91	91	89	-1	-2	-2	-4	-2	-3.8%	103
Social Workers	15	11	11	11	12	+1	+1	+1	+1	-3	+10.2%	14
Psychologists	2	2	2	2	2	+0	+0	+0	+0	-0	+0.0%	3
Pharmacy	3	5	6	6	5	+0	-1	-1	-0	+2	-4.5%	6
H&SC, Other		7	4	4	4	-3	+0	+0	-3	+4	-40.7%	5
<b>Health &amp; Social Care Professionals</b>	<b>110</b>	<b>117</b>	<b>114</b>	<b>114</b>	<b>112</b>	<b>-3</b>	<b>-2</b>	<b>-2</b>	<b>-5</b>	<b>+1</b>	<b>-4.6%</b>	<b>131</b>
Management (VIII & above)	8	23	25	25	24	+2	-1	-1	+1	+16	+4.0%	24
Administrative/ Supervisory (V to VII)	39	55	53	53	55	-1	+2	+2	+1	+16	+1.0%	58
Clerical (III & IV)	61	92	85	85	88	-7	+3	+3	-4	+27	-4.3%	97
<b>Management &amp; Administrative</b>	<b>107</b>	<b>169</b>	<b>163</b>	<b>163</b>	<b>167</b>	<b>-6</b>	<b>+3</b>	<b>+3</b>	<b>-3</b>	<b>+59</b>	<b>-1.5%</b>	<b>179</b>
Support	199	171	159	159	158	-12	-0	-0	-13	-41	-7.5%	178
Maintenance/ Technical	13	12	13	13	12	+1	-1	-1	+0	-1	+0.0%	13
<b>General Support</b>	<b>212</b>	<b>183</b>	<b>171</b>	<b>171</b>	<b>170</b>	<b>-12</b>	<b>-1</b>	<b>-1</b>	<b>-13</b>	<b>-42</b>	<b>-7.0%</b>	<b>191</b>
Health Care Assistants	1,340	1,345	1,276	1,276	1,266	-69	-11	-11	-79	-75	-5.9%	1,554
Care, other	16	33	26	26	25	-7	-1	-1	-8	+9	-24.2%	30
<b>Patient &amp; Client Care</b>	<b>1,357</b>	<b>1,378</b>	<b>1,302</b>	<b>1,302</b>	<b>1,291</b>	<b>-76</b>	<b>-11</b>	<b>-11</b>	<b>-87</b>	<b>-66</b>	<b>-6.3%</b>	<b>1,584</b>



## Older People Employment Report by Grade Group: JAN 2025

HSE South West

JAN 2025	WTE DEC 2019	WTE DEC 2023	WTE DEC 2024	WTE DEC 2024(1)	WTE JAN 2025	WTE Change 2024	WTE Change 2025	WTE Change DEC 2024	WTE Change Dec 2023 to JAN 2025	WTE Change Dec 2019 to JAN 2025	% WTE Change Dec 2023 to JAN 2025	No. JAN 2025
<b>Total HSE South West</b>	<b>2919</b>	<b>2752</b>	<b>2801</b>	<b>2801</b>	<b>2800</b>	<b>+49</b>	<b>-1</b>	<b>-1</b>	<b>+48</b>	<b>-118</b>	<b>+1.7%</b>	<b>3,613</b>
Consultants	1	1	1	1	1	+0	-0	-0	-0	-0	-8.5%	2
Registrars	3									-3	-100.0%	
SHO/ Interns	1		1	1	1	+1	+1	+1	+1	+0	-100.0%	1
Medical/ Dental, other	21	25	26	26	26	+2	-0	-0	+1	+5	+5.2%	55
<b>Medical &amp; Dental</b>	<b>26</b>	<b>26</b>	<b>28</b>	<b>28</b>	<b>28</b>	<b>+2</b>	<b>+0</b>	<b>-0</b>	<b>+2</b>	<b>+2</b>	<b>+8.5%</b>	<b>58</b>
Nurse/ Midwife Manager	118	119	124	124	122	+5	-1	-1	+4	+5	+3.0%	132
Nurse/ Midwife Specialist & ANMP	3	11	10	10	10	-1	-0	-0	-1	+7	-9.9%	11
Staff Nurse/ Staff Midwife	515	513	577	577	577	+63	+1	+1	+64	+62	+12.5%	689
Public Health Nurse	5	5	3	3	3	-2	+0	+0	-2	-2	-33.5%	4
<i>Nursing/ Midwifery awaiting registration</i>	1	5				-5			-5	-5	-100.0%	
<i>Post-registration Nurse/ Midwife Student</i>	1										-100.0%	
Nursing/ Midwifery Student	2	5				-5			-5	-2	-100.0%	
<b>Nursing &amp; Midwifery</b>	<b>643</b>	<b>653</b>	<b>714</b>	<b>714</b>	<b>713</b>	<b>+61</b>	<b>-1</b>	<b>-1</b>	<b>+60</b>	<b>+70</b>	<b>+9.2%</b>	<b>836</b>
<i>Dietitians</i>	2	2	2	2	2	+1	+0	+0	+1	+1	+33.3%	2
<i>Occupational Therapists</i>	17	10	11	11	11	+2	-0	-0	+1	+1	+12.1%	12
<i>Physiotherapists</i>	15	13	10	10	10	-2	+0	+0	-2	-2	-18.9%	12
<i>Podiatrists &amp; Chiropodists</i>	6	1	1	1	1	-1	-0	-0	-1	-1	-36.7%	1
<i>Speech &amp; Language Therapists</i>	4	4	3	3	4	-1	+0	+0	-1	-1	-15.0%	4
Therapy Professions	44	30	28	28	28	-2	-0	-0	-2	-16	-6.4%	31
Health Science/ Diagnostics	1	1	1	1	1	+0	-1	-1	-1	-0	-38.5%	2
Social Care	2	1	1	1	1	+0	-0	-0	-0	-1	-10.2%	2
Social Workers	10									-10	-100.0%	
Pharmacy	3	4	5	5	5	+1	-0	-0	+0	+2	+5.4%	10
H&SC, Other		5	3	3	3	-2	+0	+0	-2	+3	-37.6%	3
<b>Health &amp; Social Care Professionals</b>	<b>60</b>	<b>41</b>	<b>38</b>	<b>38</b>	<b>37</b>	<b>-3</b>	<b>-1</b>	<b>-1</b>	<b>-4</b>	<b>-23</b>	<b>-9.9%</b>	<b>48</b>
Management (VIII & above)	13	20	17	17	17	-3	-0	-0	-3	+4	-14.9%	17
Administrative/ Supervisory (V to VII)	17	39	46	46	46	+8	+0	+0	+8	+29	+20.1%	49
Clerical (III & IV)	128	128	126	126	125	-2	-0	-0	-3	-3	-2.0%	147
<b>Management &amp; Administrative</b>	<b>158</b>	<b>186</b>	<b>189</b>	<b>189</b>	<b>189</b>	<b>+3</b>	<b>-0</b>	<b>-0</b>	<b>+2</b>	<b>+31</b>	<b>+1.2%</b>	<b>213</b>
Support	101	120	114	114	115	-6	+1	+1	-6	+14	-4.7%	129
Maintenance/ Technical	6	3	3	3	3	-0	-0	-0	-0	-3	-0.7%	3
<b>General Support</b>	<b>107</b>	<b>123</b>	<b>117</b>	<b>117</b>	<b>118</b>	<b>-6</b>	<b>+1</b>	<b>+1</b>	<b>-6</b>	<b>+11</b>	<b>-4.6%</b>	<b>132</b>
Health Care Assistants	1,895	1,885	1,677	1,677	1,678	-8	+1	+1	-7	-217	-0.4%	2,278
Care, other	31	37	37	37	37	+1	+0	+0	+1	+7	+1.6%	48
<b>Patient &amp; Client Care</b>	<b>1,925</b>	<b>1,722</b>	<b>1,715</b>	<b>1,715</b>	<b>1,716</b>	<b>-7</b>	<b>+1</b>	<b>+1</b>	<b>-7</b>	<b>-210</b>	<b>-0.4%</b>	<b>2,326</b>



## Older People Employment Report by Grade Group: JAN 2025

### HSE Midwest

JAN 2025	WTE DEC 2019	WTE DEC 2023	WTE DEC 2024	WTE DEC 2024(1)	WTE JAN 2025	WTE Change 2024	WTE Change 2025	WTE Change DEC 2024	WTE Change Dec 2023 to JAN 2025	WTE Change Dec 2019 to JAN 2025	% WTE Change Dec 2023 to JAN 2025	No. JAN 2025
<b>Total HSE Midwest</b>	<b>974</b>	<b>1320</b>	<b>1321</b>	<b>1321</b>	<b>1311</b>	<b>+2</b>	<b>-10</b>	<b>-10</b>	<b>-9</b>	<b>+337</b>	<b>-0.7%</b>	<b>1,584</b>
Consultants	1	2	1	1	1	-1	+0	+0	-1	+0	-45.4%	1
Registrars		2	3	3	3	+1	-0	-0	+1	+3	+45.0%	3
SHO/ Interns		3	3	3	2	+0	-1	-1	-1	+2	-33.3%	2
Medical/ Dental, other	5	5	4	4	4	-1	-0	-0	-1	-1	-20.0%	4
<b>Medical &amp; Dental</b>	<b>6</b>	<b>12</b>	<b>11</b>	<b>11</b>	<b>10</b>	<b>-0</b>	<b>-2</b>	<b>-2</b>	<b>-2</b>	<b>+4</b>	<b>-16.3%</b>	<b>10</b>
Nurse/ Midwife Manager	64	74	70	70	70	-4	-0	-0	-4	+6	-5.7%	72
Nurse/ Midwife Specialist & ANMP	2	13	14	14	15	+1	+0	+0	+2	+13	+14.1%	15
Staff Nurse/ Staff Midwife	239	276	273	273	268	-3	-4	-4	-8	+30	-2.8%	306
Public Health Nurse	1		1	1	1	+1	+0	+0	+1	+0	-100.0%	1
<b>Nursing &amp; Midwifery</b>	<b>305</b>	<b>363</b>	<b>358</b>	<b>358</b>	<b>353</b>	<b>-5</b>	<b>-5</b>	<b>-5</b>	<b>-9</b>	<b>+48</b>	<b>-2.5%</b>	<b>394</b>
<i>Dietitians</i>		2	3	3	3	+1	+0	+0	+1	+1	+65.7%	3
<i>Occupational Therapists</i>	12	21	15	15	16	-5	+1	+1	-5	-5	-23.9%	18
<i>Physiotherapists</i>	10	17	16	16	16	-1	+0	+0	-1	-1	-5.9%	19
<i>Podiatrists &amp; Chiropodists</i>	3	3	4	4	4	+1	-0	-0	+1	+1	+31.5%	4
<i>Speech &amp; Language Therapists</i>	2	7	3	3	4	-4	+1	+1	-3	-3	-45.5%	4
Therapy Professions	28	49	41	41	42	-9	+1	+1	-7	+15	-14.5%	48
Health Science/ Diagnostics	1	1	1	1	1	+0	-0	-0	-0	-0	-4.3%	2
Social Workers	7	2	2	2	2	+0	+0	+0	+0	-5	+0.0%	2
Psychologists		1	1	1	1	+0	+0	+0	+0	+1	+17.9%	1
Pharmacy	1	1	1	1	1	+0	+0	+0	+0	+0	+0.0%	1
<b>Health &amp; Social Care Professionals</b>	<b>36</b>	<b>54</b>	<b>45</b>	<b>45</b>	<b>47</b>	<b>-9</b>	<b>+1</b>	<b>+1</b>	<b>-7</b>	<b>+10</b>	<b>-13.1%</b>	<b>54</b>
Management (VIII & above)	6	9	10	10	10	+1	+0	+0	+1	+4	+6.9%	10
Administrative/ Supervisory (V to VII)	21	28	26	26	25	-3	-0	-0	-3	+5	-10.5%	27
Clerical (III & IV)	50	68	64	64	64	-4	+1	+1	-4	+15	-5.6%	74
<b>Management &amp; Administrative</b>	<b>76</b>	<b>105</b>	<b>99</b>	<b>99</b>	<b>99</b>	<b>-7</b>	<b>+1</b>	<b>+1</b>	<b>-6</b>	<b>+23</b>	<b>-5.8%</b>	<b>111</b>
Support	64	51	57	57	56	+6	-0	-0	+5	-8	+9.8%	66
Maintenance/ Technical	22	22	29	29	29	+6	+1	+1	+7	+7	+29.9%	30
<b>General Support</b>	<b>86</b>	<b>74</b>	<b>86</b>	<b>86</b>	<b>86</b>	<b>+12</b>	<b>+0</b>	<b>+0</b>	<b>+12</b>	<b>-1</b>	<b>+16.0%</b>	<b>96</b>
Health Care Assistants	454	688	699	699	693	+11	-6	-6	+5	+239	+0.8%	893
Care, other	10	25	23	23	23	-1	-0	-0	-2	+13	-6.2%	26
<b>Patient &amp; Client Care</b>	<b>464</b>	<b>712</b>	<b>722</b>	<b>722</b>	<b>716</b>	<b>+10</b>	<b>-6</b>	<b>-6</b>	<b>+4</b>	<b>+252</b>	<b>+0.5%</b>	<b>919</b>



## Older People Employment Report by Grade Group: JAN 2025

### HSE West & North West

JAN 2025	WTE DEC 2019	WTE DEC 2023	WTE DEC 2024	WTE DEC 2024(1)	WTE JAN 2025	WTE Change 2024	WTE Change 2025	WTE Change DEC 2024	WTE Change Dec 2023 to JAN 2025	WTE Change Dec 2019 to JAN 2025	% WTE Change Dec 2023 to JAN 2025	No. JAN 2025
<b>Total HSE West &amp; North West</b>	<b>3053</b>	<b>3339</b>	<b>3268</b>	<b>3268</b>	<b>3235</b>	<b>-72</b>	<b>-33</b>	<b>-33</b>	<b>-105</b>	<b>+182</b>	<b>-3.1%</b>	<b>3,854</b>
Registrars			1	1	1	+1	+0	+0	+1	+1	-100.0%	1
Medical/ Dental, other	38	24	23	23	19	-1	-4	-4	-5	-19	-21.4%	49
<b>Medical &amp; Dental</b>	<b>38</b>	<b>24</b>	<b>24</b>	<b>24</b>	<b>20</b>	<b>+0</b>	<b>-4</b>	<b>-4</b>	<b>-4</b>	<b>-18</b>	<b>-17.2%</b>	<b>50</b>
Nurse/ Midwife Manager	132	147	152	152	154	+5	+3	+3	+8	+23	+5.4%	164
Nurse/ Midwife Specialist & AN/MP	7	31	29	29	28	-2	-1	-1	-3	+21	-9.4%	30
Staff Nurse/ Staff Midwife	532	577	566	566	564	-11	-2	-2	-13	+32	-2.3%	642
Public Health Nurse	1	1	1	1	1	+0	+0	+0	+0	+0	+0.0%	1
Nursing/ Midwifery other		1	1	1	1	-0	+0	+0	+0	+1	+0.0%	1
<b>Nursing &amp; Midwifery</b>	<b>671</b>	<b>756</b>	<b>748</b>	<b>748</b>	<b>748</b>	<b>-8</b>	<b>-0</b>	<b>-0</b>	<b>-8</b>	<b>+77</b>	<b>-1.1%</b>	<b>838</b>
<i>Dietitians</i>	1	4	4	4	4	+0	+0	+0	+0	+0	+6.4%	4
<i>Occupational Therapists</i>	20	37	34	34	33	-2	-1	-1	-3	-3	-8.7%	38
<i>Physiotherapists</i>	14	24	25	25	24	+1	-1	-1	+0	+0	+0.9%	27
<i>Speech &amp; Language Therapists</i>	2	4	4	4	4	+0	+0	+0	+0	+0	+6.4%	4
Therapy Professions	37	68	67	67	65	-1	-2	-2	-2	+28	-3.7%	73
Health Science/ Diagnostics	2	1	1	1	1	-0	+0	+0	-0	-1	-14.9%	1
Social Workers	27	14	12	12	12	-2	-0	-0	-2	-15	-15.8%	13
Psychologists			1	1	1	+1	+0	+0	+1	+1	-100.0%	1
Pharmacy	1	1	1	1	1	+0	+0	+0	+0	-0	+0.0%	1
H&SC, Other		9	10	10	10	+1	-0	-0	+1	+10	+10.7%	10
<b>Health &amp; Social Care Professionals</b>	<b>66</b>	<b>92</b>	<b>90</b>	<b>90</b>	<b>88</b>	<b>-1</b>	<b>-2</b>	<b>-2</b>	<b>-3</b>	<b>+22</b>	<b>-3.7%</b>	<b>99</b>
Management (VIII & above)	8	13	14	14	14	+1	+0	+0	+1	+6	+7.1%	14
Administrative/ Supervisory (V to VII)	18	42	43	43	45	+0	+2	+2	+3	+27	+6.1%	47
Clerical (III & IV)	142	132	123	123	121	-9	-2	-2	-11	-21	-8.4%	139
<b>Management &amp; Administrative</b>	<b>168</b>	<b>188</b>	<b>180</b>	<b>180</b>	<b>180</b>	<b>-8</b>	<b>+0</b>	<b>+0</b>	<b>-8</b>	<b>+12</b>	<b>-4.1%</b>	<b>200</b>
Support	170	155	146	146	145	-10	-1	-1	-10	-26	-6.7%	169
Maintenance/ Technical	24	26	26	26	26	+1	+0	+0	+1	+2	+2.9%	27
<b>General Support</b>	<b>194</b>	<b>181</b>	<b>172</b>	<b>172</b>	<b>171</b>	<b>-9</b>	<b>-1</b>	<b>-1</b>	<b>-10</b>	<b>-23</b>	<b>-5.4%</b>	<b>196</b>
Health Care Assistants	1,867	2,033	1,981	1,981	1,955	-52	-26	-26	-78	+88	-3.8%	2,392
Care, other	47	66	72	72	72	+7	-0	-0	+7	+25	+10.0%	79
<b>Patient &amp; Client Care</b>	<b>1,915</b>	<b>2,099</b>	<b>2,054</b>	<b>2,054</b>	<b>2,027</b>	<b>-45</b>	<b>-26</b>	<b>-26</b>	<b>-72</b>	<b>+113</b>	<b>-3.4%</b>	<b>2,471</b>



## Older People Employment Report by Grade Group: JAN 2025

### HSE Dublin & Midlands

JAN 2025	WTE DEC 2019	WTE DEC 2023	WTE DEC 2024	WTE DEC 2024(1)	WTE JAN 2025	WTE Change 2024	WTE Change 2025	WTE Change DEC 2024	WTE Change Dec 2023 to JAN 2025	WTE Change Dec 2019 to JAN 2025	% WTE Change Dec 2023 to JAN 2025	No. JAN 2025
<b>Total HSE Dublin &amp; Midlands</b>	<b>1917</b>	<b>1987</b>	<b>1984</b>	<b>1984</b>	<b>1977</b>	<b>-3</b>	<b>-7</b>	<b>-7</b>	<b>-10</b>	<b>+60</b>	<b>-0.5%</b>	<b>2,328</b>
SHO/ Interns	2	2	2	2	2	+0	+0	+0	+0	+0	+0.0%	2
Medical/ Dental, other	14	11	11	11	11	-0	+0	+0	-0	-3	-2.3%	18
<b>Medical &amp; Dental</b>	<b>16</b>	<b>13</b>	<b>13</b>	<b>13</b>	<b>13</b>	<b>-0</b>	<b>+0</b>	<b>+0</b>	<b>-0</b>	<b>-3</b>	<b>-1.9%</b>	<b>20</b>
Nurse/ Midwife Manager	123	155	158	158	158	+3	+0	+0	+4	+36	+2.4%	164
Nurse/ Midwife Specialist & AN/MP	5	13	14	14	13	+1	-1	-1	+1	+9	+4.0%	14
Staff Nurse/ Staff Midwife	374	375	392	392	391	+17	-1	-1	+16	+17	+4.2%	433
Public Health Nurse	2	3	3	3	3	+0	+0	+0	+0	+1	+0.0%	3
<i>Nursing/ Midwifery awaiting registration</i>		1	1	1	2	-0	+1	+1	+1	+1	+75.8%	2
Nursing/ Midwifery Student		1	1	1	2	-0	+1	+1	+1	+2	+75.8%	2
Nursing/ Midwifery other		2	1	1	1	-1	+0	+0	-1	+1	-47.4%	1
<b>Nursing &amp; Midwifery</b>	<b>504</b>	<b>549</b>	<b>569</b>	<b>569</b>	<b>569</b>	<b>+20</b>	<b>-0</b>	<b>-0</b>	<b>+20</b>	<b>+65</b>	<b>+3.7%</b>	<b>617</b>
<i>Dietitians</i>	2	2	3	3	3	+1	+0	+0	+1	+1	+32.1%	4
<i>Occupational Therapists</i>	10	11	11	11	11	+0	+0	+0	+0	+0	+1.3%	13
<i>Physiotherapists</i>	13	16	18	18	17	+2	-1	-1	+1	+1	+3.2%	20
<i>Podiatrists &amp; Chiropodists</i>	1	1				-1			-1	-1	-100.0%	
<i>Speech &amp; Language Therapists</i>	1	6	5	5	4	-1	-0	-0	-1	-1	-23.5%	5
Therapy Professions	28	36	36	36	35	+1	-1	-1	-0	+8	-1.3%	42
Health Science/ Diagnostics		1	1	1	1	+0	+0	+0	+0	+1	+5.3%	1
Social Workers	13	5	5	5	5	+0	-0	-0	+0	-7	+4.4%	6
Pharmacy	4	5	5	5	4	+0	-0	-0	-0	+0	-2.0%	5
H&SC, Other	1	2	2	2	1	+0	-0	-0	-0	+0	-0.7%	2
<b>Health &amp; Social Care Professionals</b>	<b>45</b>	<b>48</b>	<b>49</b>	<b>49</b>	<b>48</b>	<b>+1</b>	<b>-1</b>	<b>-1</b>	<b>-0</b>	<b>+2</b>	<b>-0.6%</b>	<b>56</b>
Management (VIII & above)	10	14	14	14	15	+0	+0	+0	+1	+5	+6.8%	15
Administrative/ Supervisory (V to VII)	19	45	35	35	34	-10	-0	-0	-10	+15	-23.1%	36
Clerical (III & IV)	80	106	96	96	98	-11	+2	+2	-9	+18	-8.3%	104
<b>Management &amp; Administrative</b>	<b>109</b>	<b>165</b>	<b>145</b>	<b>145</b>	<b>147</b>	<b>-20</b>	<b>+2</b>	<b>+2</b>	<b>-18</b>	<b>+38</b>	<b>-11.1%</b>	<b>155</b>
Support	130	126	127	127	125	+0	-2	-2	-2	-6	-1.3%	140
Maintenance/ Technical	20	21	22	22	22	+1	+0	+0	+1	+2	+5.0%	22
<b>General Support</b>	<b>150</b>	<b>147</b>	<b>149</b>	<b>149</b>	<b>147</b>	<b>+1</b>	<b>-2</b>	<b>-2</b>	<b>-1</b>	<b>-4</b>	<b>-0.4%</b>	<b>162</b>
Health Care Assistants	1,072	1,038	1,022	1,022	1,016	-16	-6	-6	-22	-56	-2.1%	1,270
Care, other	21	27	38	38	38	+11	+0	+0	+11	+17	+39.3%	48
<b>Patient &amp; Client Care</b>	<b>1,093</b>	<b>1,065</b>	<b>1,060</b>	<b>1,060</b>	<b>1,054</b>	<b>-5</b>	<b>-6</b>	<b>-6</b>	<b>-11</b>	<b>-39</b>	<b>-1.0%</b>	<b>1,318</b>



## Older People Employment Report by Grade Group: JAN 2025

### Corporate Centre

JAN 2025	WTE DEC 2019	WTE DEC 2023	WTE DEC 2024	WTE DEC 2024(1)	WTE JAN 2025	WTE Change 2024	WTE Change 2025	WTE Change DEC 2024	WTE Change Dec 2023 to JAN 2025	WTE Change Dec 2019 to JAN 2025	% WTE Change Dec 2023 to JAN 2025	No. JAN 2025
<b>Total Corporate Centre</b>	<b>74</b>	<b>128</b>	<b>111</b>	<b>111</b>	<b>62</b>	<b>-17</b>	<b>-49</b>	<b>-49</b>	<b>-66</b>	<b>-12</b>	<b>-51.4%</b>	<b>65</b>
Nurse/ Midwife Manager		3	3	3	3	+0	+0	+0	+0	+3	+0.0%	3
<b>Nursing &amp; Midwifery</b>		<b>3</b>	<b>3</b>	<b>3</b>	<b>3</b>	<b>+0</b>	<b>+0</b>	<b>+0</b>	<b>+0</b>	<b>+3</b>	<b>+0.0%</b>	<b>3</b>
Health Science/ Diagnostics	1									-1	-100.0%	
Social Care		1	1	1	1	+0	+0	+0	+0	+1	+0.0%	1
<b>Health &amp; Social Care Professionals</b>	<b>1</b>	<b>1</b>	<b>1</b>	<b>1</b>	<b>1</b>	<b>+0</b>	<b>+0</b>	<b>+0</b>	<b>+0</b>	<b>+0</b>	<b>+0.0%</b>	<b>1</b>
Management (VIII & above)	19	27	19	19	14	-8	-5	-5	-13	-5	-47.6%	14
Administrative/ Supervisory (V to VII)	23	42	35	35	21	-7	-14	-14	-21	-3	-50.9%	21
Clerical (III & IV)	31	54	53	53	23	-2	-30	-30	-32	-9	-58.3%	25
<b>Management &amp; Administrative</b>	<b>73</b>	<b>123</b>	<b>106</b>	<b>106</b>	<b>57</b>	<b>-17</b>	<b>-49</b>	<b>-49</b>	<b>-66</b>	<b>-16</b>	<b>-53.4%</b>	<b>60</b>
Health Care Assistants	0									-0	-100.0%	
Care, other		1	1	1	1	+0	+0	+0	+0	+1	+0.0%	1
<b>Patient &amp; Client Care</b>	<b>0</b>	<b>1</b>	<b>1</b>	<b>1</b>	<b>1</b>	<b>+0</b>	<b>+0</b>	<b>+0</b>	<b>+0</b>	<b>+1</b>	<b>+0.0%</b>	<b>1</b>



# Older People Employment Report by Grade Group: JAN 2025

JAN 2025	WTE DEC 2019	WTE DEC 2023	WTE DEC 2024	WTE DEC 2024(1)	WTE JAN 2025	WTE Change 2024	WTE Change 2025	WTE Change DEC 2024	WTE Change Dec 2023 to JAN 2025	WTE Change Dec 2019 to JAN 2025	% WTE Change Dec 2023 to JAN 2025	No. JAN 2025
<b>Overall</b>	<b>13,239</b>	<b>14,154</b>	<b>13,941</b>	<b>13,941</b>	<b>13,823</b>	<b>-214</b>	<b>-118</b>	<b>-118</b>	<b>-331</b>	<b>+584</b>	<b>-2.34%</b>	<b>16,645</b>
Consultant Medicine	4	5	6	6	6	+1	-0	-0	+1	+2	10.76%	8
<b>Consultants</b>	<b>4</b>	<b>5</b>	<b>6</b>	<b>6</b>	<b>6</b>	<b>+1</b>	<b>-0</b>	<b>-0</b>	<b>+1</b>	<b>+2</b>	<b>10.76%</b>	<b>8</b>
Registrar	7	9	11	11	10	+2	-0	-0	+2	+4	18.92%	11
Senior Registrar	1	1	1	1	1	+0	+0	+0	+0	+0	0.00%	1
Specialist Registrar	2	1	2	2	2	+1	-0	-0	+1	-0	93.00%	2
<b>Registrars</b>	<b>10</b>	<b>11</b>	<b>14</b>	<b>14</b>	<b>13</b>	<b>+3</b>	<b>-0</b>	<b>-0</b>	<b>+3</b>	<b>+4</b>	<b>24.17%</b>	<b>14</b>
Senior House Officer	15	18	18	18	17	+0	-1	-1	-1	+2	-4.68%	18
<b>SHO/ Interns</b>	<b>15</b>	<b>18</b>	<b>18</b>	<b>18</b>	<b>17</b>	<b>+0</b>	<b>-1</b>	<b>-1</b>	<b>-1</b>	<b>+2</b>	<b>-4.68%</b>	<b>18</b>
Other Medical	95	85	83	83	77	-2	-5	-5	-7	-18	-8.34%	149
<b>Medical/ Dental, other</b>	<b>95</b>	<b>85</b>	<b>83</b>	<b>83</b>	<b>77</b>	<b>-2</b>	<b>-5</b>	<b>-5</b>	<b>-7</b>	<b>-18</b>	<b>-8.34%</b>	<b>149</b>
<b>Medical &amp; Dental</b>	<b>124</b>	<b>118</b>	<b>120</b>	<b>120</b>	<b>114</b>	<b>+2</b>	<b>-7</b>	<b>-7</b>	<b>-5</b>	<b>-10</b>	<b>-4.03%</b>	<b>189</b>
Clinical Nurse/ Midwife Manager 1	176	161	179	179	175	+18	-4	-4	+14	-1	8.53%	185
Clinical Nurse/ Midwife Manager 2	314	393	389	389	395	-4	+6	+6	+2	+81	0.47%	419
Clinical Nurse/ Midwife Manager 3	21	23	25	25	24	+2	-1	-1	+1	+3	6.11%	25
Director Nursing/Midwifery, Assistant	102	129	114	114	117	-14	+3	+3	-12	+16	-9.03%	125
Director of Nursing/Midwifery	98	105	104	104	103	-1	-1	-1	-2	+5	-1.56%	105
<b>Nurse/ Midwife Manager</b>	<b>711</b>	<b>811</b>	<b>812</b>	<b>812</b>	<b>815</b>	<b>+1</b>	<b>+3</b>	<b>+3</b>	<b>+4</b>	<b>+104</b>	<b>0.46%</b>	<b>859</b>
Advanced Nurse/ Midwife Practitioner	4	28	29	29	30	+2	+1	+1	+3	+26	9.95%	31
Adv. Nurse/ Midwife, Candidate	7	28	21	21	19	-6	-2	-2	-8	+13	-29.91%	22
Clinical Nurse/ Midwife Specialist	16	55	57	57	56	+1	-0	-0	+1	+41	2.10%	61
<b>Nurse/ Midwife Specialist &amp; AN/MP</b>	<b>26</b>	<b>111</b>	<b>107</b>	<b>107</b>	<b>106</b>	<b>-3</b>	<b>-1</b>	<b>-1</b>	<b>-4</b>	<b>+80</b>	<b>-3.98%</b>	<b>114</b>
Staff Midwives		2	2	2	2	+0	+0	+0	+0	+2	0.00%	2
Staff Nurse [Intellectual Disability]		2	3	3	2	+1	-1	-1	+0	+2	0.00%	2
Staff Nurse [Psychiatric]	4	4	4	4	4	+0	+0	+0	+0	+1	5.97%	5
Staff Nurses [General/ Children's]	2,571	2,692	2,741	2,741	2,736	+49	-4	-4	+44	+165	1.65%	3,097
<b>Staff Nurse/ Staff Midwife</b>	<b>2,575</b>	<b>2,700</b>	<b>2,749</b>	<b>2,749</b>	<b>2,744</b>	<b>+50</b>	<b>-5</b>	<b>-5</b>	<b>+45</b>	<b>+169</b>	<b>1.66%</b>	<b>3,106</b>
Public Health Nurse	14	11	9	9	9	-2	+0	+0	-2	-5	-19.53%	10
<b>Public Health Nurse</b>	<b>14</b>	<b>11</b>	<b>9</b>	<b>9</b>	<b>9</b>	<b>-2</b>	<b>+0</b>	<b>+0</b>	<b>-2</b>	<b>-5</b>	<b>-19.53%</b>	<b>10</b>
Nursing/ Midwifery awaiting registration	1	7	1	1	2	-7	+1	+1	-6	+1	-76.77%	2
Post-registration Nurse/ Midwife Student	1									-1	-100.00%	
<b>Nursing/ Midwifery Student</b>	<b>2</b>	<b>7</b>	<b>1</b>	<b>1</b>	<b>2</b>	<b>-7</b>	<b>+1</b>	<b>+1</b>	<b>-6</b>	<b>-0</b>	<b>-76.77%</b>	<b>2</b>
Nursing Education/Clinical	1	3	2	2	2	-1	+0	+0	-1	+1	-31.03%	2
<b>Nursing/ Midwifery other</b>	<b>1</b>	<b>3</b>	<b>2</b>	<b>2</b>	<b>2</b>	<b>-1</b>	<b>+0</b>	<b>+0</b>	<b>-1</b>	<b>+1</b>	<b>-31.03%</b>	<b>2</b>
<b>Nursing &amp; Midwifery</b>	<b>3329</b>	<b>3643</b>	<b>3680</b>	<b>3680</b>	<b>3678</b>	<b>+38</b>	<b>-3</b>	<b>-3</b>	<b>+35</b>	<b>+349</b>	<b>0.97%</b>	<b>4,093</b>
Dietitians	16	30	33	33	33	+3	-0	-0	+3	+17	9.93%	38
Occupational Therapists	113	144	140	140	138	-3	-2	-2	-6	+24	-4.14%	155
Physiotherapists	123	163	151	151	150	-12	-1	-1	-13	+27	-7.88%	173
Podiatrists & Chiropodists	12	5	5	5	5	+0	-0	-0	-0	-7	-4.10%	6
Speech & Language Therapists	23	43	40	40	40	-3	+0	+0	-2	+17	-5.56%	46
<b>Therapy Professions</b>	<b>288</b>	<b>385</b>	<b>370</b>	<b>370</b>	<b>366</b>	<b>-15</b>	<b>-3</b>	<b>-3</b>	<b>-18</b>	<b>+79</b>	<b>-4.78%</b>	<b>418</b>
Clinical Engineering		1	1	1	1	+0	+0	+0	+0	+1	5.26%	1
Radiographers	6	4	4	4	3	-0	-1	-1	-1	-3	-14.29%	6
Vascular Physiologists	0	0	0	0	0	+0	-0	-0	-0	-0	-17.65%	1
<b>Health Science/ Diagnostics</b>	<b>6</b>	<b>5</b>	<b>5</b>	<b>5</b>	<b>4</b>	<b>-0</b>	<b>-0</b>	<b>-0</b>	<b>-0</b>	<b>-2</b>	<b>-10.45%</b>	<b>8</b>
Social Care	3	3	3	3	3	+0	-0	-0	-0	-0	-4.89%	4
<b>Social Care</b>	<b>3</b>	<b>3</b>	<b>3</b>	<b>3</b>	<b>3</b>	<b>+0</b>	<b>-0</b>	<b>-0</b>	<b>-0</b>	<b>-0</b>	<b>-4.89%</b>	<b>4</b>
Social Workers	98	52	51	51	51	-1	+0	+0	-0	-47	-0.97%	58
<b>Social Workers</b>	<b>98</b>	<b>52</b>	<b>51</b>	<b>51</b>	<b>51</b>	<b>-1</b>	<b>+0</b>	<b>+0</b>	<b>-0</b>	<b>-47</b>	<b>-0.97%</b>	<b>58</b>
Psychologists	2	4	4	4	4	+1	+0	+0	+1	+2	16.93%	6
<b>Psychologists</b>	<b>2</b>	<b>4</b>	<b>4</b>	<b>4</b>	<b>4</b>	<b>+1</b>	<b>+0</b>	<b>+0</b>	<b>+1</b>	<b>+2</b>	<b>16.93%</b>	<b>6</b>
Pharmacists	13	14	15	15	14	+1	-1	-1	-0	+2	-0.63%	23
Pharmacy Technicians	3	6	6	6	6	+1	+0	+0	+1	+4	9.09%	7
<b>Pharmacy</b>	<b>15</b>	<b>20</b>	<b>21</b>	<b>21</b>	<b>20</b>	<b>+1</b>	<b>-1</b>	<b>-1</b>	<b>+0</b>	<b>+5</b>	<b>2.07%</b>	<b>30</b>
Other Health & Social Care	0	24	21	21	21	-4	+0	+0	-3	+20	-14.03%	23



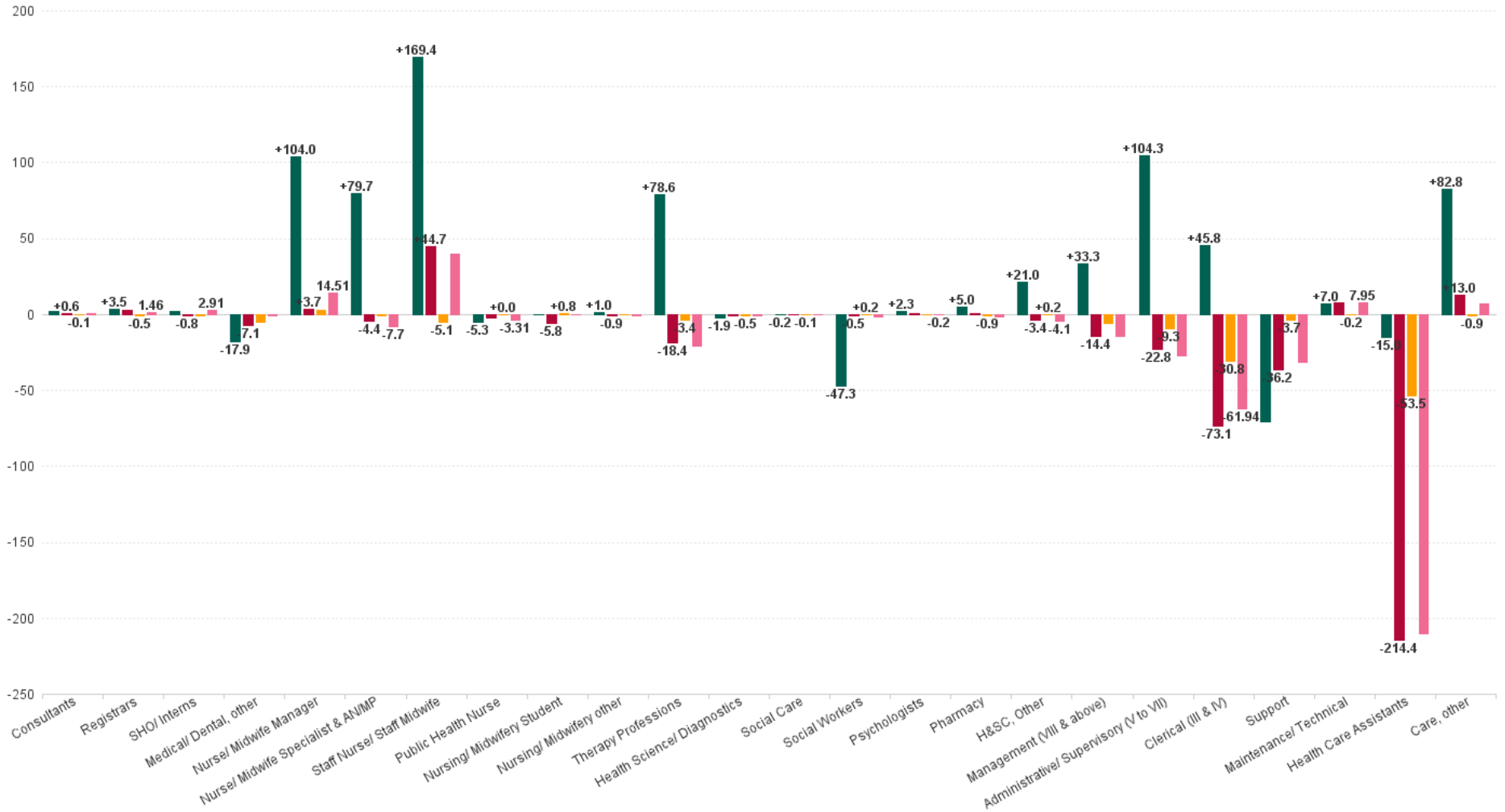
JAN 2025	WTE DEC 2019	WTE DEC 2023	WTE DEC 2024	WTE DEC 2024(1)	WTE JAN 2025	WTE Change 2024	WTE Change 2025	WTE Change DEC 2024	WTE Change Dec 2023 to JAN 2025	WTE Change Dec 2019 to JAN 2025	% WTE Change Dec 2023 to JAN 2025	No. JAN 2025
<b>Overall</b>	<b>13,239</b>	<b>14,154</b>	<b>13,941</b>	<b>13,941</b>	<b>13,823</b>	<b>-214</b>	<b>-118</b>	<b>-118</b>	<b>-331</b>	<b>+584</b>	<b>-2.34%</b>	<b>16,645</b>
Play Therapists/ Specialists	1	2	2	2	1	+0	-0	-0	-0	+0	-0.67%	2
<b>H&amp;SC, Other</b>	<b>1</b>	<b>26</b>	<b>22</b>	<b>22</b>	<b>22</b>	<b>-4</b>	<b>+0</b>	<b>+0</b>	<b>-3</b>	<b>+21</b>	<b>-13.25%</b>	<b>25</b>
<b>Health &amp; Social Care Professionals</b>	<b>414</b>	<b>493</b>	<b>476</b>	<b>476</b>	<b>471</b>	<b>-17</b>	<b>-5</b>	<b>-5</b>	<b>-22</b>	<b>+57</b>	<b>-4.43%</b>	<b>549</b>
CEO/Chief Officer	1	1				-1			-1	-1	-100.00%	
General Managers	21	34	29	29	29	-5	-0	-0	-5	+8	-15.02%	29
National Director	1	1				-1			-1	-1	-100.00%	
National Director, Assistant	4	5	3	3	3	-2	+0	+0	-2	-1	-39.88%	3
Other Executives	6	10	10	10	9	-0	-1	-1	-1	+3	-10.00%	9
VIII	42	72	72	72	67	+0	-4	-4	-4	+25	-6.01%	68
<b>Management (VIII &amp; above)</b>	<b>75</b>	<b>122</b>	<b>113</b>	<b>113</b>	<b>108</b>	<b>-9</b>	<b>-6</b>	<b>-6</b>	<b>-14</b>	<b>+33</b>	<b>-11.74%</b>	<b>109</b>
Middle Management (V-VII)	168	296	282	282	273	-14	-9	-9	-23	+105	-7.71%	287
Other Administrative	1									-1	-100.00%	
<b>Administrative/ Supervisory (V to VII)</b>	<b>169</b>	<b>296</b>	<b>282</b>	<b>282</b>	<b>273</b>	<b>-14</b>	<b>-9</b>	<b>-9</b>	<b>-23</b>	<b>+104</b>	<b>-7.71%</b>	<b>287</b>
General Administrative (III & IV)	570	689	647	647	616	-42	-31	-31	-73	+46	-10.60%	699
<b>Clerical (III &amp; IV)</b>	<b>570</b>	<b>689</b>	<b>647</b>	<b>647</b>	<b>616</b>	<b>-42</b>	<b>-31</b>	<b>-31</b>	<b>-73</b>	<b>+46</b>	<b>-10.60%</b>	<b>699</b>
<b>Management &amp; Administrative</b>	<b>813</b>	<b>1107</b>	<b>1042</b>	<b>1042</b>	<b>997</b>	<b>-65</b>	<b>-46</b>	<b>-46</b>	<b>-110</b>	<b>+183</b>	<b>-9.96%</b>	<b>1,095</b>
Catering	223	341	408	408	408	+67	-0	-0	+67	+185	19.57%	472
Household Services	461	319	232	232	227	-87	-5	-5	-92	-234	-28.84%	262
Other Support	32	22	19	19	19	-4	+1	+1	-3	-12	-13.99%	23
Portering	81	80	71	71	72	-9	+1	+1	-8	-9	-9.85%	74
<b>Support</b>	<b>797</b>	<b>762</b>	<b>730</b>	<b>730</b>	<b>726</b>	<b>-32</b>	<b>-4</b>	<b>-4</b>	<b>-36</b>	<b>-71</b>	<b>-4.75%</b>	<b>831</b>
Maintenance	95	90	99	99	98	+8	-0	-0	+8	+3	8.95%	102
Technical Services		4	4	4	4	+0	+0	+0	+0	+4	0.00%	4
<b>Maintenance/ Technical</b>	<b>95</b>	<b>94</b>	<b>103</b>	<b>103</b>	<b>102</b>	<b>+8</b>	<b>-0</b>	<b>-0</b>	<b>+8</b>	<b>+7</b>	<b>8.57%</b>	<b>106</b>
<b>General Support</b>	<b>892</b>	<b>857</b>	<b>833</b>	<b>833</b>	<b>829</b>	<b>-24</b>	<b>-4</b>	<b>-4</b>	<b>-28</b>	<b>-64</b>	<b>-3.28%</b>	<b>937</b>
Attendant/ Aide	2,328	1,531	1,373	1,373	1,361	-158	-12	-12	-170	-967	-11.10%	1,607
Health Care Assistant/ Care Assistant	1,729	2,470	2,559	2,559	2,543	+89	-16	-16	+73	+815	2.96%	2,913
Health Care Assistant /Home Support	3,448	3,638	3,551	3,551	3,527	-87	-24	-24	-111	+79	-3.04%	4,911
Health & Social Care Assistants	22	87	82	82	80	-5	-1	-1	-7	+58	-7.82%	86
<b>Health Care Assistants</b>	<b>7,527</b>	<b>7,726</b>	<b>7,565</b>	<b>7,565</b>	<b>7,512</b>	<b>-161</b>	<b>-53</b>	<b>-53</b>	<b>-214</b>	<b>-15</b>	<b>-2.77%</b>	<b>9,517</b>
Home Care Services	84	164	185	185	186	+22	+0	+0	+22	+102	13.57%	195
Other Care Grades	22	21	20	20	20	-1	-1	-1	-1	-3	-6.97%	27
Pastoral Care	32	22	16	16	16	-5	-1	-1	-6	-16	-27.46%	41
Workshop Services	2	4	2	2	2	-2	+0	+0	-2	-0	-48.91%	2
<b>Care, other</b>	<b>140</b>	<b>210</b>	<b>224</b>	<b>224</b>	<b>223</b>	<b>+14</b>	<b>-1</b>	<b>-1</b>	<b>+13</b>	<b>+83</b>	<b>6.16%</b>	<b>265</b>
<b>Patient &amp; Client Care</b>	<b>7667</b>	<b>7936</b>	<b>7789</b>	<b>7789</b>	<b>7735</b>	<b>-147</b>	<b>-54</b>	<b>-54</b>	<b>-201</b>	<b>+68</b>	<b>-2.54%</b>	<b>9,782</b>





# WTE Change by Staff Category

■ WTE change since DEC 2019 ■ WTE change since DEC 2023 ■ WTE change since DEC 2024(1) ■ WTE change since JAN 2024



## Older People Employment Report by WTE, Headcount, Gender, Full-Time / Part-Time etc. JAN 2025

JAN 2025	WTE JAN 2025	No. JAN 2025	WTE : No	% Male	% Female	Male WTE : No.	Female WTE : No	Perm Count %	Perm Count Male %	Perm Count Female %	Fulltime Count %	Part time Count %	FT Count Male %	FT Count Female %
<b>Total</b>	<b>13,823</b>	<b>16,645</b>	<b>1:0.8</b>	<b>14.67%</b>	<b>85.33%</b>	<b>1:0.9</b>	<b>1:0.8</b>	<b>91.55%</b>	<b>13.13%</b>	<b>78.42%</b>	<b>53.49%</b>	<b>46.51%</b>	<b>76.61%</b>	<b>49.51%</b>
Consultants	5.97	8	1:0.7	12.50%	87.50%	1:0.4	1:0.8	87.50%	12.50%	75.00%	50.00%	50.00%		57.14%
Medical/ Dental, other	77.47	149	1:0.5	58.39%	41.61%	1:0.5	1:0.5	63.76%	35.57%	28.19%	26.17%	73.83%	24.14%	29.03%
Registrars	10.12	11	1:0.9	45.45%	81.82%	1:1	1:0.9	45.45%	18.18%	27.27%	118.18%	9.09%	100.00%	88.89%
SHO/ Interns	17.11	18	1:1	61.11%	38.89%	1:0.9	1:1	11.11%	11.11%		100.00%		100.00%	100.00%
Registrars	2.93	3	1:1	166.67%	300.00%	1:1	1:0.9	166.67%	66.67%	100.00%	433.33%	33.33%	100.00%	88.89%
Medical & Dental	114	189	1:0.6	55.03%	44.97%	1:0.6	1:0.6	57.67%	30.69%	26.98%	39.15%	60.85%	35.58%	43.53%
Nurse/ Midwife Specialist & AN/MP	49.87	53	1:0.9	15.09%	200.00%	1:0.9	1:0.9	201.89%	13.21%	188.68%	205.66%	9.43%	100.00%	95.28%
Nurse/ Midwife Manager	594.11	629	1:0.9	10.65%	125.91%	1:1	1:0.9	133.55%	10.33%	123.21%	119.87%	16.69%	97.01%	86.99%
Nurse/ Midwife Specialist & AN/MP	56.28	61	1:0.9	13.11%	173.77%	1:0.9	1:0.9	175.41%	11.48%	163.93%	178.69%	8.20%	100.00%	95.28%
Nurse/ Midwife Manager	220.52	230	1:1		344.35%	1:1	1:0.9	365.22%	28.26%	336.96%	327.83%	45.65%	97.01%	86.99%
Nursing/ Midwifery other	2	2	1:1		100.00%	1:	1:1	100.00%		100.00%	100.00%			100.00%
Nursing/ Midwifery Student	1.74	2	1:0.9	50.00%	50.00%	1:1	1:0.7	50.00%	50.00%		100.00%		100.00%	100.00%
Public Health Nurse	8.9	10	1:0.9		100.00%	1:	1:0.9	100.00%		100.00%	60.00%	40.00%		60.00%
Staff Nurse/ Staff Midwife	2,744.37	3,106	1:0.9	9.01%	90.99%	1:1	1:0.9	91.05%	8.27%	82.78%	70.38%	29.62%	90.71%	68.37%
Nursing & Midwifery	3,678	4,093	1:0.9	8.70%	91.30%	1:1	1:0.9	92.55%	8.06%	84.49%	74.74%	25.26%	92.13%	73.08%
Health Science/ Diagnostics	1	1	1:1	200.00%	600.00%	1:0.8	1:0.4	700.00%	200.00%	500.00%	200.00%	600.00%	50.00%	16.67%
Therapy Professions	170.89	193	1:0.9	22.80%	193.78%	1:1	1:0.9	205.70%	22.28%	183.42%	167.88%	48.70%	97.73%	75.13%
H&SC, Other	20.83	23	1:0.9	13.04%	95.65%	1:0.8	1:0.9	108.70%	13.04%	95.65%	95.65%	13.04%	66.67%	90.91%
Pharmacy	20.26	30	1:0.7	23.33%	76.67%	1:0.6	1:0.7	83.33%	20.00%	63.33%	53.33%	46.67%	57.14%	52.17%
Therapy Professions	150.4	173	1:0.9	25.43%	216.18%	1:1	1:0.9	229.48%	24.86%	204.62%	187.28%	54.34%	97.73%	75.13%
H&SC, Other	1.49	2	1:0.7	150.00%	1,100.00%	1:0.8	1:0.9	1,250.00%	150.00%	1,100.00%	1,100.00%	150.00%	66.67%	90.91%
Therapy Professions	4.68	6	1:0.8	733.33%	6,233.33%	1:1	1:0.9	6,616.67%	716.67%	5,900.00%	5,400.00%	1,566.67%	97.73%	75.13%
Psychologists	4.42	6	1:0.7	16.67%	83.33%	1:0.5	1:0.8	100.00%	16.67%	83.33%	50.00%	50.00%		60.00%
Health Science/ Diagnostics	3.06	6	1:0.5	33.33%	100.00%	1:0.8	1:0.4	116.67%	33.33%	83.33%	33.33%	100.00%	50.00%	16.67%
Social Care	2.53	4	1:0.6	25.00%	75.00%	1:1	1:0.5	100.00%	25.00%	75.00%	25.00%	75.00%	100.00%	
Social Workers	51.07	58	1:0.9	8.62%	91.38%	1:1	1:0.9	89.66%	8.62%	81.03%	74.14%	25.86%	100.00%	71.70%
Therapy Professions	40.46	46	1:0.9	95.65%	813.04%	1:1	1:0.9	863.04%	93.48%	769.57%	704.35%	204.35%	97.73%	75.13%
Health Science/ Diagnostics	0.14	1	1:0.1	200.00%	600.00%	1:0.8	1:0.4	700.00%	200.00%	500.00%	200.00%	600.00%	50.00%	16.67%
Health & Social Care Professionals	471	549	1:0.9	11.48%	88.52%	1:0.9	1:0.8	93.99%	11.11%	82.88%	74.86%	25.14%	88.89%	73.05%
Clerical (III & IV)	616.03	699	1:0.9	10.16%	89.84%	1:1	1:0.9	92.42%	9.30%	83.12%	69.67%	30.33%	92.96%	67.04%
Management (VIII & above)	28.62	29	1:1	120.69%	255.17%	1:1	1:1	372.41%	117.24%	255.17%	375.86%		100.00%	100.00%
Administrative/ Supervisory (V to VII)	272.78	287	1:1	14.63%	85.37%	1:1	1:0.9	98.95%	14.63%	84.32%	85.37%	14.63%	95.24%	83.67%
Management (VIII & above)	79.29	80	1:1	43.75%	92.50%	1:1	1:1	135.00%	42.50%	92.50%	136.25%		100.00%	100.00%
Management & Administrative	997	1,095	1:0.9	13.52%	86.48%	1:1	1:0.9	94.79%	12.88%	81.92%	76.80%	23.20%	95.27%	73.92%
Support	635	734	1:0.9	37.87%	75.34%	1:1	1:0.8	102.59%	33.79%	68.80%	70.03%	43.19%	85.61%	49.91%
Maintenance/ Technical	98.45	102	1:1	102.94%	0.98%	1:1	1:1	101.96%	100.98%	0.98%	99.02%	4.90%	95.24%	100.00%
Support	91.24	97	1:0.9	286.60%	570.10%	1:1	1:0.8	776.29%	255.67%	520.62%	529.90%	326.80%	85.61%	49.91%
Maintenance/ Technical	4	4	1:1	2,625.00%	25.00%	1:1	1:1	2,600.00%	2,575.00%	25.00%	2,525.00%	125.00%	95.24%	100.00%
General Support	829	937	1:0.9	40.88%	59.12%	1:1	1:0.8	91.46%	37.46%	54.00%	65.64%	34.36%	88.25%	50.00%
Health Care Assistants	7,511.86	9,517	1:0.8	13.86%	86.14%	1:0.9	1:0.8	91.34%	12.60%	78.74%	38.89%	61.11%	70.58%	33.79%
Care, other	223.11	265	1:0.8	25.66%	74.34%	1:0.6	1:0.9	89.43%	16.98%	72.45%	76.23%	23.77%	57.35%	82.74%
Patient & Client Care	7,735	9,782	1:0.8	14.18%	85.82%	1:0.9	1:0.8	91.29%	12.72%	78.57%	39.90%	60.10%	69.94%	34.94%



## Older People Employment Report by WTE, Headcount, Gender, Full-Time / Part-Time etc. JAN 2025

JAN 2025	WTE JAN 2025	No. JAN 2025	WTE : No	% Male	% Female	Male WTE : No.	Female WTE : No	Perm Count %	Number Male %	Number Female %	Fulltime Count %	Part time Count %	FT Count Male %	FT Count Female %
<b>Total</b>	<b>13,823</b>	<b>16,645</b>	<b>1:0.8</b>	<b>14.67%</b>	<b>85.33%</b>	<b>1:0.9</b>	<b>1:0.8</b>	<b>91.55%</b>	<b>13.13%</b>	<b>78.42%</b>	<b>53.49%</b>	<b>46.51%</b>	<b>76.61%</b>	<b>49.51%</b>
HSE Dublin & North East	1,991	2,340	1:0.9	15.38%	84.62%	1:0.9	1:0.8	95.56%	14.40%	81.15%	62.22%	37.78%	85.00%	58.08%
HSE Dublin & South East	2,447	2,861	1:0.9	15.45%	84.55%	1:0.9	1:0.8	96.78%	14.44%	82.35%	57.99%	42.01%	78.73%	54.20%
HSE South West	2,800	3,613	1:0.8	12.79%	87.21%	1:0.9	1:0.8	86.44%	10.38%	76.06%	38.92%	61.08%	64.29%	35.20%
HSE Midwest	1,311	1,584	1:0.8	13.70%	86.30%	1:0.9	1:0.8	93.94%	12.44%	81.50%	60.61%	39.39%	88.48%	56.18%
HSE West & North West	3,235	3,854	1:0.8	14.79%	85.21%	1:0.9	1:0.8	88.82%	13.47%	75.35%	46.63%	53.37%	70.35%	42.51%
HSE Dublin & Midlands	1,977	2,328	1:0.8	16.07%	83.93%	1:0.9	1:0.8	91.75%	14.09%	77.66%	67.35%	32.65%	83.16%	64.33%
Corporate Centre	62	65	1:1	24.62%	75.38%	1:1	1:0.9	96.92%	24.62%	72.31%	87.69%	12.31%	93.75%	85.71%



## Previous Month Summary

	% WTE change since DEC 2024	WTE change since DEC 2024	HSE Dublin & North East	HSE Dublin & South East	HSE South West	HSE Midwest	HSE West & North West	HSE Dublin & Midlands	Corporate Centre
<b>Total</b>	<b>-0.8%</b>	<b>-117.6</b>	<b>-4.6</b>	<b>-12.8</b>	<b>-0.6</b>	<b>-10.4</b>	<b>-32.9</b>	<b>-7.4</b>	<b>-49.0</b>
Consultants	-1.2%	-0.1	+0.0	+0.0	-0.1	+0.0			
Registrars	-3.4%	-0.5	-0.4	+0.0		-0.1	+0.0		
SHO/ Interns	-4.9%	-0.9	-0.4		+0.5	-1.0		+0.0	
Medical/ Dental, other	-6.3%	-5.2	+0.0	-0.2	-0.4	-0.5	-4.1	+0.0	
<b>Medical &amp; Dental</b>	<b>-5.5%</b>	<b>-6.6</b>	<b>-0.7</b>	<b>-0.2</b>	<b>+0.0</b>	<b>-1.6</b>	<b>-4.1</b>	<b>+0.0</b>	
Nurse/ Midwife Manager	+0.3%	+2.8	+2.3	-0.7	-1.3	-0.4	+2.6	+0.4	+0.0
Nurse/ Midwife Specialist & AN/MP	-1.1%	-1.1	+0.1	+0.2	-0.1	+0.3	-1.0	-0.7	
Staff Nurse/ Staff Midwife	-0.2%	-5.1	+2.3	-1.1	+0.7	-4.5	-1.8	-0.7	
Public Health Nurse	+0.5%	+0.0		+0.0	+0.0	+0.0	+0.0	+0.0	
Nursing/ Midwifery Student	+77.6%	+0.8						+0.8	
Nursing/ Midwifery other	+4.7%	+0.1					+0.1	+0.0	
<b>Nursing &amp; Midwifery</b>	<b>-0.1%</b>	<b>-2.5</b>	<b>+4.7</b>	<b>-1.6</b>	<b>-0.6</b>	<b>-4.6</b>	<b>-0.3</b>	<b>-0.2</b>	<b>+0.0</b>
Therapy Professions	-0.9%	-3.4	-0.0	-2.1	-0.1	+1.4	-1.6	-1.0	
Health Science/ Diagnostics	-10.3%	-0.5	+0.0		-0.5	-0.0	+0.0	+0.1	
Social Care	-4.9%	-0.1	+0.0		-0.1				+0.0
Social Workers	+0.4%	+0.2	-0.1	+0.6		+0.0	-0.2	-0.1	
Psychologists	+1.8%	+0.1	+0.0	+0.0		+0.1	+0.0		
Pharmacy	-4.4%	-0.9	+0.0	-0.5	-0.3	+0.0	+0.0	-0.1	
H&SC, Other	+0.8%	+0.2	+0.1	+0.1	+0.1		-0.1	-0.0	
<b>Health &amp; Social Care Professionals</b>	<b>-1.0%</b>	<b>-4.5</b>	<b>+0.0</b>	<b>-2.0</b>	<b>-1.0</b>	<b>+1.5</b>	<b>-1.9</b>	<b>-1.1</b>	<b>+0.0</b>
Management (VIII & above)	-4.9%	-5.6	-0.1	-1.1	-0.1	+0.1	+0.0	+0.5	-4.9
Administrative/ Supervisory (V to VII)	-3.3%	-9.3	+0.9	+1.9	+0.2	-0.1	+2.1	-0.2	-14.1
Clerical (III & IV)	-4.8%	-30.8	-3.2	+2.6	-0.5	+0.5	-1.9	+1.7	-30.0
<b>Management &amp; Administrative</b>	<b>-4.4%</b>	<b>-45.7</b>	<b>-2.4</b>	<b>+3.4</b>	<b>-0.4</b>	<b>+0.5</b>	<b>+0.3</b>	<b>+2.0</b>	<b>-49.0</b>



Support	-0.5%	-3.7	-0.6	-0.4	+0.7	-0.5	-0.9	-2.1	
Maintenance/ Technical	-0.2%	-0.2	-0.4	-0.6	-0.0	+0.5	+0.2	+0.1	
<b>General Support</b>	<b>-0.5%</b>	<b>-4.0</b>	<b>-1.0</b>	<b>-1.0</b>	<b>+0.7</b>	<b>+0.1</b>	<b>-0.7</b>	<b>-2.0</b>	
Health Care Assistants	-0.7%	-53.5	-5.1	-10.8	+0.6	-6.0	-26.2	-6.1	
Care, other	-0.4%	-0.9	-0.1	-0.6	+0.1	-0.3	-0.0	+0.1	+0.0
<b>Patient &amp; Client Care</b>	<b>-0.7%</b>	<b>-54.4</b>	<b>-5.1</b>	<b>-11.5</b>	<b>+0.7</b>	<b>-6.3</b>	<b>-26.2</b>	<b>-6.0</b>	<b>+0.0</b>



## Year on Year Summary

	% WTE change since JAN 2024	WTE change since JAN 2024	HSE Dublin & North East	HSE Dublin & South East	HSE South West	HSE Midwest	HSE West & North West	HSE Dublin & Midlands	Corporate Centre
<b>Total</b>	<b>-2.2%</b>	<b>-312.4</b>	<b>-55.6</b>	<b>-125.4</b>	<b>+38.6</b>	<b>-8.1</b>	<b>-62.3</b>	<b>-35.5</b>	<b>-64.2</b>
Consultants	+7.4%	+0.4	+1.5	+0.0	-0.1	-1.0			
Registrars	+12.6%	+1.5	+0.4	+0.0		+0.1	+1.0		
SHO/ Interns	+20.5%	+2.9	+0.9		+1.0	+1.0		+0.0	
Medical/ Dental, other	-0.9%	-0.7	+0.0	-0.5	+1.8	-1.0	-0.8	-0.3	
<b>Medical &amp; Dental</b>	<b>+3.7%</b>	<b>+4.1</b>	<b>+2.8</b>	<b>-0.5</b>	<b>+2.7</b>	<b>-0.9</b>	<b>+0.2</b>	<b>-0.3</b>	
Nurse/ Midwife Manager	+1.8%	+14.5	+1.2	-4.7	+7.5	-3.5	+10.3	+3.7	+0.0
Nurse/ Midwife Specialist & AN/MP	-6.8%	-7.7	+1.4	-3.9	-1.1	+0.2	-3.0	-1.3	
Staff Nurse/ Staff Midwife	+1.5%	+39.8	+10.3	-19.5	+47.5	-7.9	-12.1	+21.5	
Public Health Nurse	-27.1%	-3.3	-1.6	+0.0	-2.7	+1.0	+0.0	+0.0	
Nursing/ Midwifery Student	-13.0%	-0.3		-1.0				+0.7	
Nursing/ Midwifery other	-32.4%	-1.0					+0.0	-1.0	
<b>Nursing &amp; Midwifery</b>	<b>+1.2%</b>	<b>+42.0</b>	<b>+11.3</b>	<b>-29.1</b>	<b>+51.2</b>	<b>-10.2</b>	<b>-4.8</b>	<b>+23.6</b>	<b>+0.0</b>
Therapy Professions	-5.4%	-20.8	-7.6	-0.7	-2.7	-6.6	-3.0	-0.2	
Health Science/ Diagnostics	-9.7%	-0.5	+0.1		-0.5	+0.0	-0.1	+0.1	
Social Care	-4.9%	-0.1	+0.0		-0.1				+0.0
Social Workers	-3.0%	-1.6	-0.0	+1.1		+0.0	-2.6	-0.1	
Psychologists	-4.3%	-0.2	+0.0	+0.0		+0.1	-0.3		
Pharmacy	-6.9%	-1.5	-0.5	-0.7	-0.6	+0.0	+0.0	+0.3	
H&SC, Other	-15.5%	-4.1	-0.3	-2.7	-1.9		+0.7	+0.0	
<b>Health &amp; Social Care Professionals</b>	<b>-5.7%</b>	<b>-28.7</b>	<b>-8.3</b>	<b>-3.1</b>	<b>-5.8</b>	<b>-6.5</b>	<b>-5.2</b>	<b>+0.2</b>	<b>+0.0</b>
Management (VIII & above)	-11.5%	-14.0	-2.1	+1.1	-3.1	+0.7	-0.0	+1.1	-11.6
Administrative/ Supervisory (V to VII)	-9.0%	-27.0	-0.8	-0.6	+8.0	-2.6	+2.5	-11.6	-21.9
Clerical (III & IV)	-9.1%	-61.9	-9.7	-3.5	-0.4	-3.8	-9.6	-4.3	-30.7
<b>Management &amp; Administrative</b>	<b>-9.4%</b>	<b>-103.0</b>	<b>-12.7</b>	<b>-3.0</b>	<b>+4.5</b>	<b>-5.7</b>	<b>-7.1</b>	<b>-14.8</b>	<b>-64.2</b>
Support	-4.1%	-31.2	-11.1	-13.4	-4.7	+7.0	-8.8	-0.3	
Maintenance/ Technical	+8.4%	+8.0	-0.4	+0.0	-0.0	+6.7	+0.4	+1.3	



<b>General Support</b>	<b>-2.7%</b>	<b>-23.3</b>	<b>-11.5</b>	<b>-13.4</b>	<b>-4.7</b>	<b>+13.7</b>	<b>-8.5</b>	<b>+1.1</b>	
Health Care Assistants	-2.7%	-210.3	-38.4	-68.4	-9.7	+3.0	-40.8	-56.1	
Care, other	+3.1%	+6.8	+1.2	-8.0	+0.4	-1.5	+3.8	+10.8	+0.0
<b>Patient &amp; Client Care</b>	<b>-2.6%</b>	<b>-203.5</b>	<b>-37.2</b>	<b>-76.4</b>	<b>-9.3</b>	<b>+1.6</b>	<b>-37.0</b>	<b>-45.2</b>	<b>+0.0</b>



## Year to Date Summary

	% WTE change since DEC 2024 (1)	WTE change since DEC 2024 (1)	HSE Dublin & North East	HSE Dublin & South East	HSE South West	HSE Midwest	HSE West & North West	HSE Dublin & Midlands	Corporate Centre
<b>Total</b>	<b>-0.8%</b>	<b>-117.6</b>	<b>-4.6</b>	<b>-12.8</b>	<b>-0.6</b>	<b>-10.4</b>	<b>-32.9</b>	<b>-7.4</b>	<b>-49.0</b>
Consultants	-1.2%	-0.1	+0.0	+0.0	-0.1	+0.0			
Registrars	-3.4%	-0.5	-0.4	+0.0		-0.1	+0.0		
SHO/ Interns	-4.9%	-0.9	-0.4		+0.5	-1.0		+0.0	
Medical/ Dental, other	-6.3%	-5.2	+0.0	-0.2	-0.4	-0.5	-4.1	+0.0	
<b>Medical &amp; Dental</b>	<b>-5.5%</b>	<b>-6.6</b>	<b>-0.7</b>	<b>-0.2</b>	<b>+0.0</b>	<b>-1.6</b>	<b>-4.1</b>	<b>+0.0</b>	
Nurse/ Midwife Manager	+0.3%	+2.8	+2.3	-0.7	-1.3	-0.4	+2.6	+0.4	+0.0
Nurse/ Midwife Specialist & AN/MP	-1.1%	-1.1	+0.1	+0.2	-0.1	+0.3	-1.0	-0.7	
Staff Nurse/ Staff Midwife	-0.2%	-5.1	+2.3	-1.1	+0.7	-4.5	-1.8	-0.7	
Public Health Nurse	+0.5%	+0.0		+0.0	+0.0	+0.0	+0.0	+0.0	
Nursing/ Midwifery Student	+77.6%	+0.8						+0.8	
Nursing/ Midwifery other	+4.7%	+0.1					+0.1	+0.0	
<b>Nursing &amp; Midwifery</b>	<b>-0.1%</b>	<b>-2.5</b>	<b>+4.7</b>	<b>-1.6</b>	<b>-0.6</b>	<b>-4.6</b>	<b>-0.3</b>	<b>-0.2</b>	<b>+0.0</b>
Therapy Professions	-0.9%	-3.4	-0.0	-2.1	-0.1	+1.4	-1.6	-1.0	
Health Science/ Diagnostics	-10.3%	-0.5	+0.0		-0.5	-0.0	+0.0	+0.1	
Social Care	-4.9%	-0.1	+0.0		-0.1				+0.0
Social Workers	+0.4%	+0.2	-0.1	+0.6		+0.0	-0.2	-0.1	
Psychologists	+1.8%	+0.1	+0.0	+0.0		+0.1	+0.0		
Pharmacy	-4.4%	-0.9	+0.0	-0.5	-0.3	+0.0	+0.0	-0.1	
H&SC, Other	+0.8%	+0.2	+0.1	+0.1	+0.1		-0.1	-0.0	

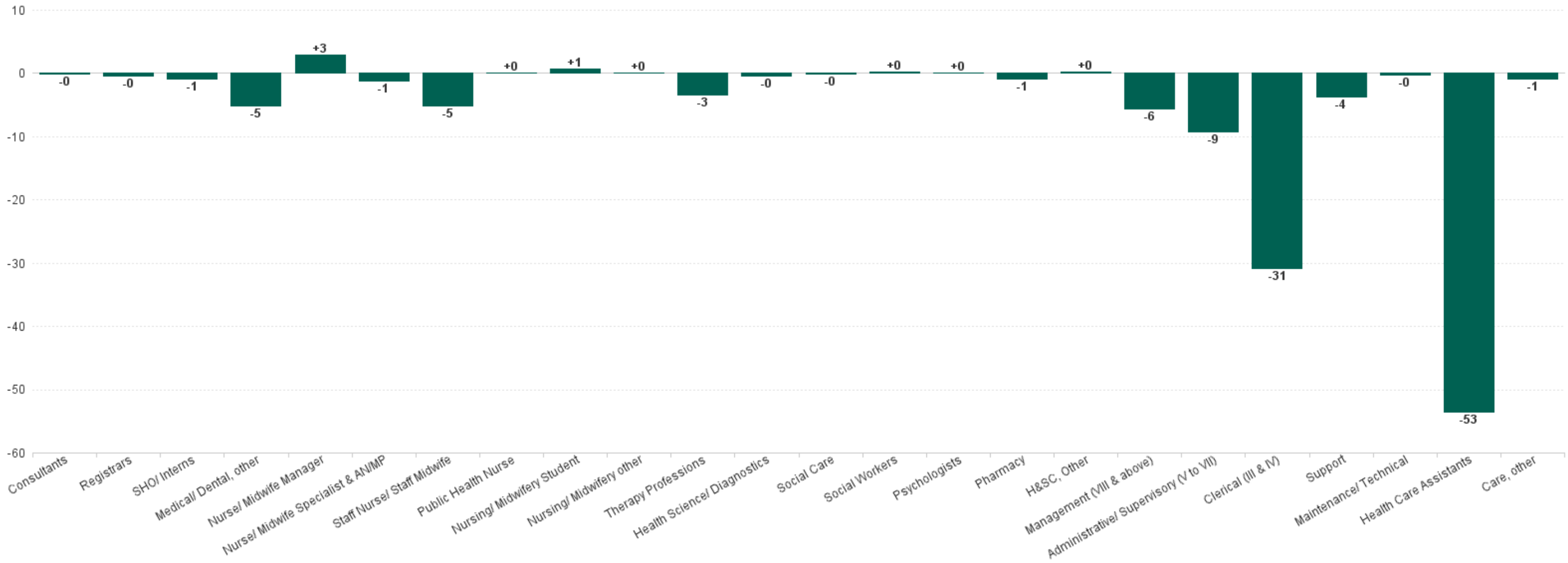




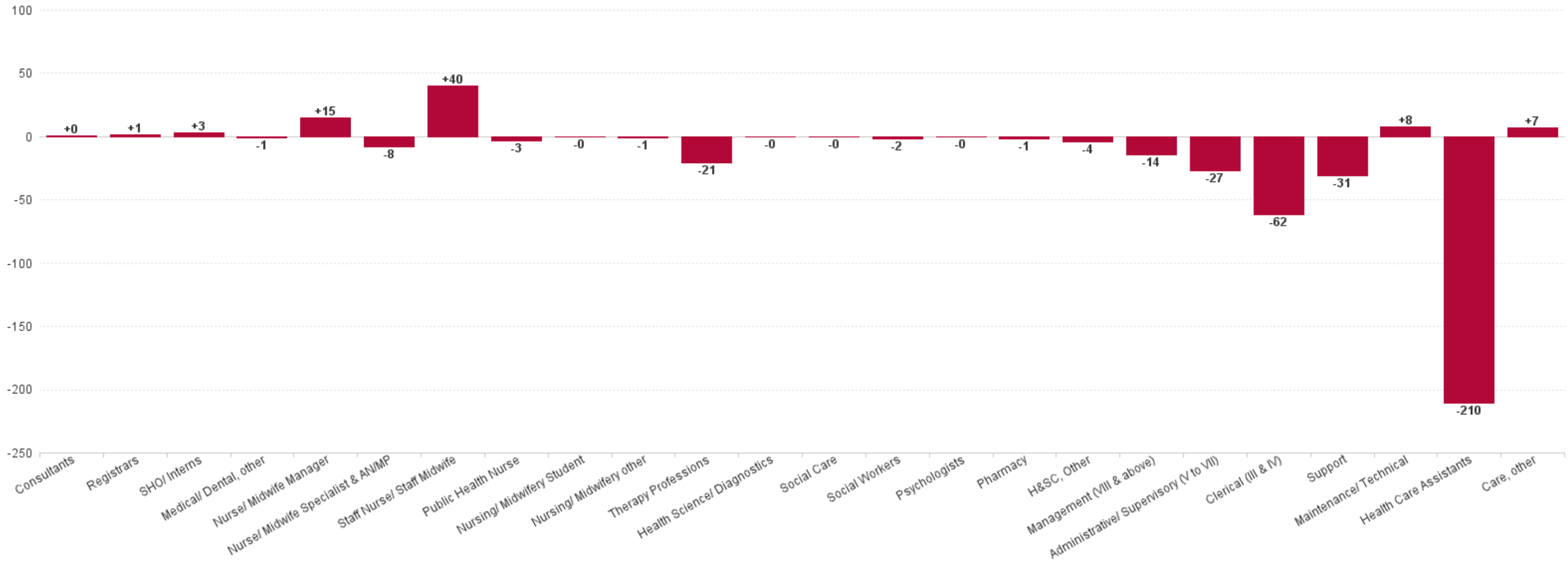
<b>Health &amp; Social Care Professionals</b>	<b>-1.0%</b>	<b>-4.5</b>	<b>+0.0</b>	<b>-2.0</b>	<b>-1.0</b>	<b>+1.5</b>	<b>-1.9</b>	<b>-1.1</b>	<b>+0.0</b>
Management (VIII & above)	-4.9%	-5.6	-0.1	-1.1	-0.1	+0.1	+0.0	+0.5	-4.9
Administrative/ Supervisory (V to VII)	-3.3%	-9.3	+0.9	+1.9	+0.2	-0.1	+2.1	-0.2	-14.1
Clerical (III & IV)	-4.8%	-30.8	-3.2	+2.6	-0.5	+0.5	-1.9	+1.7	-30.0
<b>Management &amp; Administrative</b>	<b>-4.4%</b>	<b>-45.7</b>	<b>-2.4</b>	<b>+3.4</b>	<b>-0.4</b>	<b>+0.5</b>	<b>+0.3</b>	<b>+2.0</b>	<b>-49.0</b>
Support	-0.5%	-3.7	-0.6	-0.4	+0.7	-0.5	-0.9	-2.1	
Maintenance/ Technical	-0.2%	-0.2	-0.4	-0.6	-0.0	+0.5	+0.2	+0.1	
<b>General Support</b>	<b>-0.5%</b>	<b>-4.0</b>	<b>-1.0</b>	<b>-1.0</b>	<b>+0.7</b>	<b>+0.1</b>	<b>-0.7</b>	<b>-2.0</b>	
Health Care Assistants	-0.7%	-53.5	-5.1	-10.8	+0.6	-6.0	-26.2	-6.1	
Care, other	-0.4%	-0.9	-0.1	-0.6	+0.1	-0.3	-0.0	+0.1	+0.0
<b>Patient &amp; Client Care</b>	<b>-0.7%</b>	<b>-54.4</b>	<b>-5.1</b>	<b>-11.5</b>	<b>+0.7</b>	<b>-6.3</b>	<b>-26.2</b>	<b>-6.0</b>	<b>+0.0</b>



Previous Month Summary Chart: Change since DEC 2024



Previous Year Summary Chart: Change since JAN 2024



YTD Summary Chart: Change since DEC 2024

