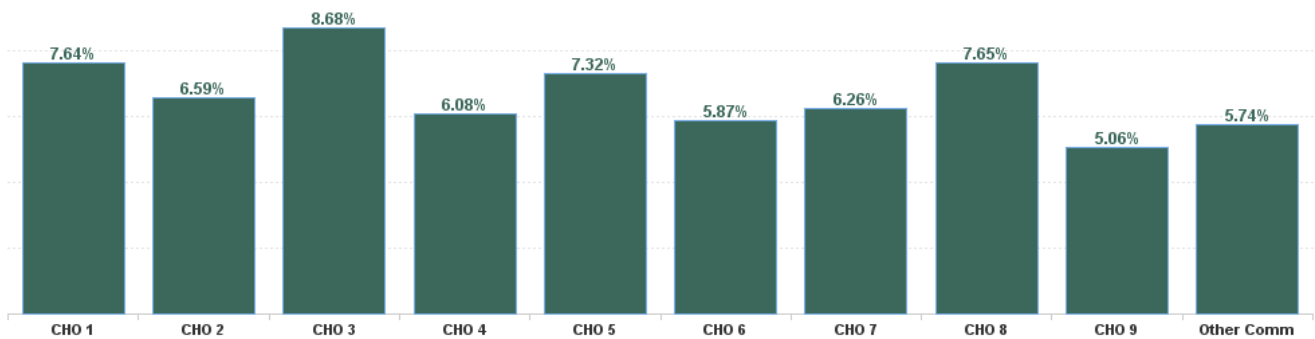


## September 2024

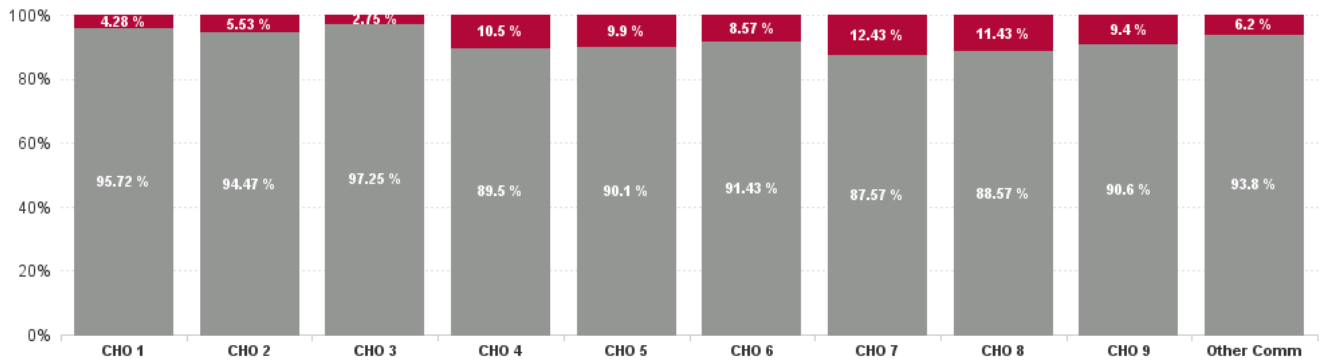
Health Service Absence Rate - by Staff Category: Sep 2024	Certified absence	Self-certified absence	Non Covid-19 absence	Covid-19 Absence	Total absence rate	% Non Covid-19 absence	% Covid-19 absence
<b>Mental Health</b>	<b>5.54%</b>	<b>0.58%</b>	<b>6.11%</b>	<b>0.55%</b>	<b>6.66%</b>	<b>91.80%</b>	<b>8.20%</b>
Medical & Dental	2.72%	0.40%	3.12%	0.21%	3.33%	93.58%	6.42%
Nursing & Midwifery	5.69%	0.65%	6.34%	0.71%	7.05%	89.95%	10.05%
Health & Social Care Professionals	4.47%	0.40%	4.87%	0.37%	5.24%	92.91%	7.09%
Management & Administrative	6.19%	0.46%	6.65%	0.39%	7.04%	94.47%	5.53%
General Support	6.65%	0.64%	7.29%	0.69%	7.98%	91.38%	8.62%
Patient & Client Care	7.40%	0.71%	8.12%	0.47%	8.59%	94.50%	5.50%

Health Service Absence Rate - by Hospital Group: Sep 2024	Certified absence	Self-certified absence	Non Covid-19 absence	Covid-19 Absence	Total absence rate	% Non Covid-19 absence	% Covid-19 absence
<b>Mental Health</b>	<b>5.54%</b>	<b>0.58%</b>	<b>6.11%</b>	<b>0.55%</b>	<b>6.66%</b>	<b>91.80%</b>	<b>8.20%</b>
CHO 1	6.91%	0.40%	7.31%	0.33%	7.64%	95.72%	4.28%
CHO 2	5.81%	0.41%	6.22%	0.36%	6.59%	94.47%	5.53%
CHO 3	7.77%	0.67%	8.44%	0.24%	8.68%	97.25%	2.75%
CHO 4	5.00%	0.44%	5.44%	0.64%	6.08%	89.50%	10.50%
CHO 5	6.01%	0.59%	6.60%	0.73%	7.32%	90.10%	9.90%
CHO 6	4.80%	0.57%	5.37%	0.50%	5.87%	91.43%	8.57%
CHO 7	4.88%	0.60%	5.48%	0.78%	6.26%	87.57%	12.43%
CHO 8	6.17%	0.60%	6.78%	0.87%	7.65%	88.57%	11.43%
CHO 9	3.89%	0.70%	4.59%	0.48%	5.06%	90.60%	9.40%
Other Community Services	4.31%	1.08%	5.38%	0.36%	5.74%	93.80%	6.20%

Total Absence Rate



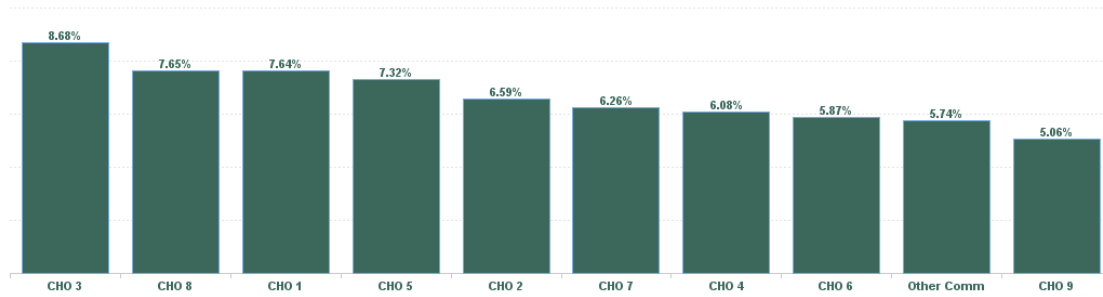
% of Absence Non Covid-19 / Covid-19



September 2024

Health Service Absence Rate - by HG, CHO/Care Group & Staff Category : Sep 2024	Certified absence	Self-certified absence	Non Covid-19 absence	Covid-19 Absence	Total absence rate	Medical & Dental	Nursing & Midwifery	Health & Social Care Professionals	Management & Administrative	General Support	Patient & Client Care
<b>Mental Health</b>	<b>5.54%</b>	<b>0.58%</b>	<b>6.11%</b>	<b>0.55%</b>	<b>6.66%</b>	<b>3.33%</b>	<b>7.05%</b>	<b>5.24%</b>	<b>7.04%</b>	<b>7.98%</b>	<b>8.59%</b>
CHO 1	6.91%	0.40%	7.31%	0.33%	7.64%	4.38%	8.12%	7.07%	7.58%	8.80%	8.91%
CHO 2	5.81%	0.41%	6.22%	0.36%	6.59%	1.98%	8.01%	6.30%	3.80%	7.05%	7.19%
CHO 3	7.77%	0.67%	8.44%	0.24%	8.68%	2.24%	9.55%	2.74%	9.17%	7.36%	18.66%
CHO 4	5.00%	0.44%	5.44%	0.64%	6.08%	4.93%	6.38%	5.32%	3.01%	5.95%	9.37%
CHO 5	6.01%	0.59%	6.60%	0.73%	7.32%	4.94%	7.28%	6.16%	11.10%	7.92%	5.62%
CHO 6	4.80%	0.57%	5.37%	0.50%	5.87%	3.20%	6.77%	3.67%	8.35%	9.50%	6.94%
CHO 7	4.88%	0.60%	5.48%	0.78%	6.26%	2.30%	6.38%	4.41%	9.04%	7.06%	10.69%
CHO 8	6.17%	0.60%	6.78%	0.87%	7.65%	2.46%	8.28%	8.51%	9.58%	9.05%	6.72%
CHO 9	3.89%	0.70%	4.59%	0.48%	5.06%	2.91%	4.20%	3.83%	8.24%	6.32%	8.64%
Other Community Services	4.31%	1.08%	5.38%	0.36%	5.74%	3.76%	6.42%	5.11%	3.14%	17.34%	4.69%

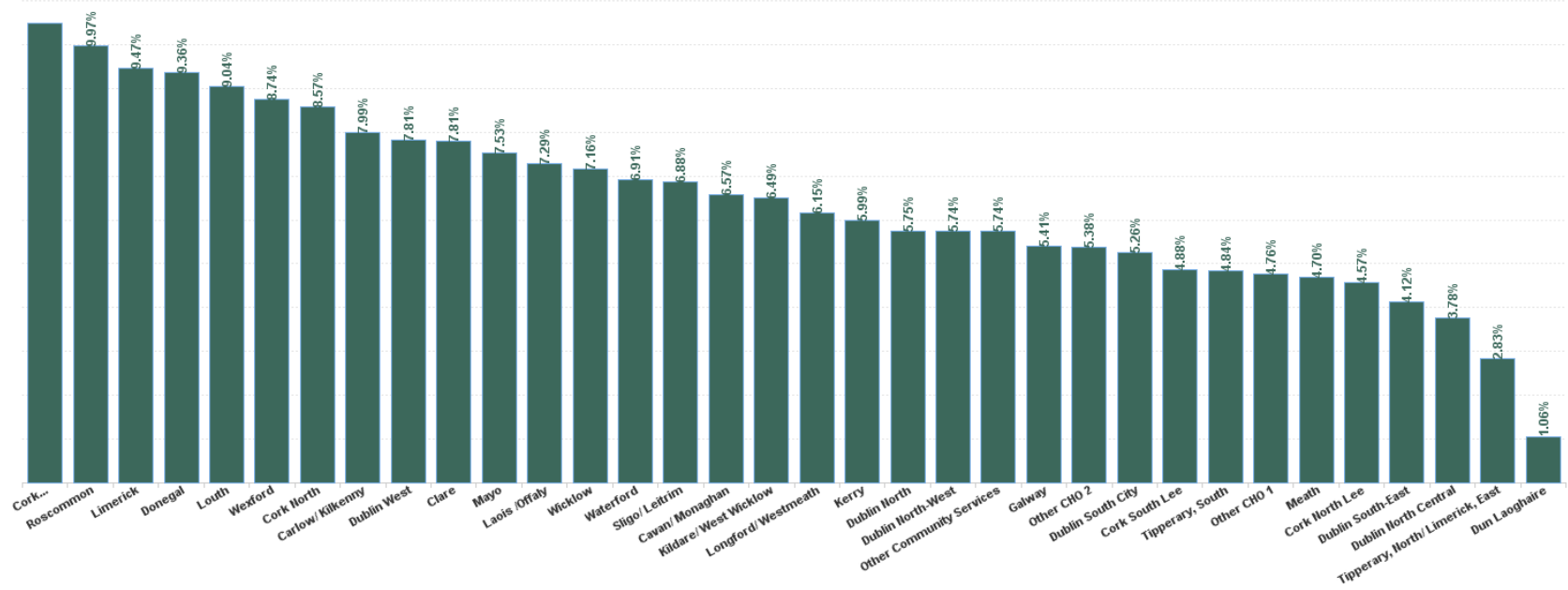
Total Absence Rate



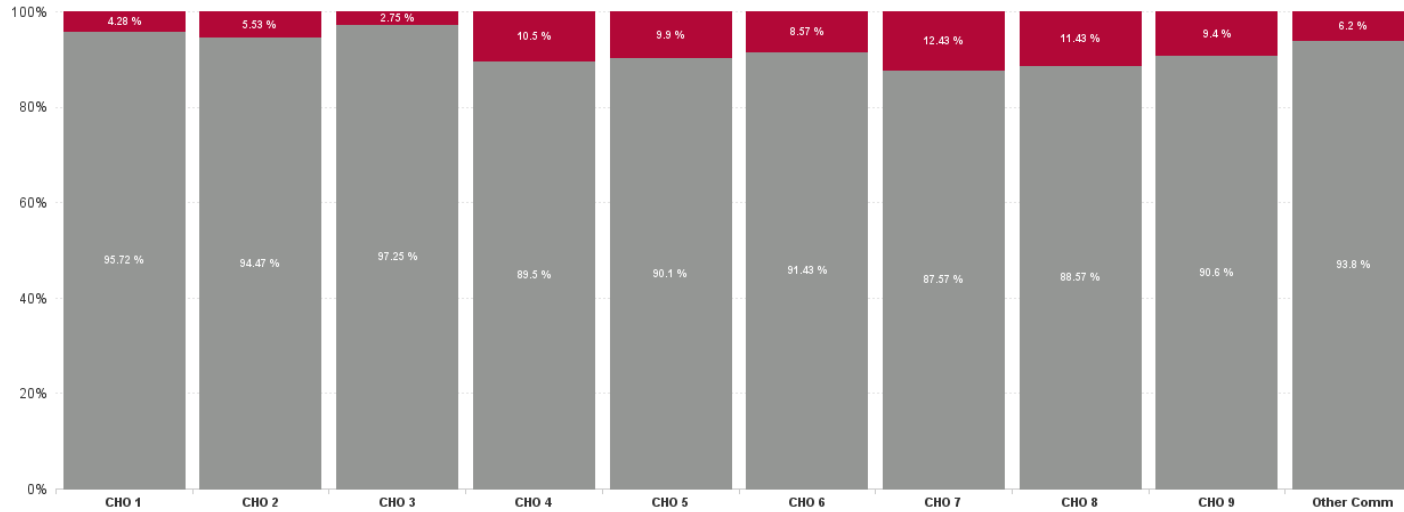
September 2024

Health Service Absence Rate - by HG, CHO/Care Group & Staff Category: Sep 2024	Certified absence	Self-certified absence	Non Covid-19 absence	Covid-19 Absence	Total absence rate	Medical & Dental	Nursing & Midwifery	Health & Social Care Professionals	Management & Administrative	General Support	Patient & Client Care
<b>Total</b>	5.54%	0.58%	6.11%	0.55%	6.66%	3.33%	7.05%	5.24%	7.04%	7.98%	8.59%
Cavan/ Monaghan	5.74%	0.50%	6.24%	0.34%	6.57%	8.55%	7.15%	6.42%	4.08%	0.64%	6.59%
Donegal	8.61%	0.30%	8.91%	0.45%	9.36%	0.32%	11.43%	7.75%	8.65%	14.76%	2.22%
Other CHO 1	0.00%	4.76%	4.76%	0.00%	4.76%				4.76%		
Sligo/ Leitrim	6.29%	0.40%	6.69%	0.18%	6.88%	3.22%	5.05%	6.82%	11.14%	7.15%	23.89%
<b>CHO 1</b>	<b>6.91%</b>	<b>0.40%</b>	<b>7.31%</b>	<b>0.33%</b>	<b>7.64%</b>	<b>4.38%</b>	<b>8.12%</b>	<b>7.07%</b>	<b>7.58%</b>	<b>8.80%</b>	<b>8.91%</b>
Galway	4.78%	0.37%	5.15%	0.26%	5.41%	2.10%	6.52%	4.70%	3.23%	6.22%	6.19%
Mayo	6.47%	0.54%	7.01%	0.52%	7.53%	1.83%	9.10%	8.09%	3.12%	3.02%	8.89%
Other CHO 2	5.38%	0.00%	5.38%	0.00%	5.38%			8.72%	0.00%		
Roscommon	9.09%	0.35%	9.44%	0.53%	9.97%	1.45%	11.46%	11.13%	8.54%	16.87%	8.30%
<b>CHO 2</b>	<b>5.81%</b>	<b>0.41%</b>	<b>6.22%</b>	<b>0.36%</b>	<b>6.59%</b>	<b>1.98%</b>	<b>8.01%</b>	<b>6.30%</b>	<b>3.80%</b>	<b>7.05%</b>	<b>7.19%</b>
Clare	6.85%	0.69%	7.54%	0.27%	7.81%	0.51%	7.05%	4.26%	6.78%	8.27%	12.53%
Limerick	8.55%	0.67%	9.23%	0.24%	9.47%	2.90%	11.72%	2.15%	10.59%	6.99%	25.19%
Tipperary, North/ Limerick, East	2.39%	0.44%	2.83%	0.00%	2.83%	0.00%	1.49%	10.35%	1.26%		
<b>CHO 3</b>	<b>7.77%</b>	<b>0.67%</b>	<b>8.44%</b>	<b>0.24%</b>	<b>8.68%</b>	<b>2.24%</b>	<b>9.55%</b>	<b>2.74%</b>	<b>9.17%</b>	<b>7.36%</b>	<b>18.66%</b>
Cork North	7.31%	0.50%	7.80%	0.77%	8.57%	11.27%	7.86%	9.19%	6.51%	7.14%	10.11%
Cork North Lee	3.61%	0.39%	4.00%	0.57%	4.57%	5.96%	5.22%	2.25%	2.44%	8.67%	7.80%
Cork South Lee	4.08%	0.39%	4.47%	0.41%	4.88%	2.70%	4.86%	8.83%	0.90%	3.90%	0.93%
Cork West	8.09%	1.08%	9.16%	1.33%	10.49%	6.01%	11.18%	3.48%	8.57%		14.66%
Kerry	4.96%	0.37%	5.33%	0.66%	5.99%	2.72%	6.53%	6.44%	2.44%	4.96%	9.40%
<b>CHO 4</b>	<b>5.00%</b>	<b>0.44%</b>	<b>5.44%</b>	<b>0.64%</b>	<b>6.08%</b>	<b>4.93%</b>	<b>6.38%</b>	<b>5.32%</b>	<b>3.01%</b>	<b>5.95%</b>	<b>9.37%</b>
Carlow/ Kilkenny	6.57%	0.40%	6.97%	1.02%	7.99%	4.39%	8.50%	5.08%	10.00%	8.93%	5.88%
Tipperary, South	3.80%	0.80%	4.59%	0.25%	4.84%	0.66%	4.54%	6.69%	10.67%	4.92%	1.57%
Waterford	6.07%	0.54%	6.62%	0.29%	6.91%	6.86%	5.97%	4.09%	5.36%	13.32%	10.60%
Wexford	6.92%	0.75%	7.67%	1.07%	8.74%	6.47%	8.87%	8.30%	16.81%	5.19%	5.00%
<b>CHO 5</b>	<b>6.01%</b>	<b>0.59%</b>	<b>6.60%</b>	<b>0.73%</b>	<b>7.32%</b>	<b>4.94%</b>	<b>7.28%</b>	<b>6.16%</b>	<b>11.10%</b>	<b>7.92%</b>	<b>5.62%</b>
Dublin South-East	3.12%	0.78%	3.90%	0.23%	4.12%	0.26%	3.58%	2.68%	9.05%	4.87%	6.49%
Dun Laoghaire	1.06%	0.00%	1.06%	0.00%	1.06%			1.06%			
Wicklow	6.02%	0.44%	6.46%	0.70%	7.16%	3.91%	10.60%	4.22%	8.16%	11.46%	7.91%
<b>CHO 6</b>	<b>4.80%</b>	<b>0.57%</b>	<b>5.37%</b>	<b>0.50%</b>	<b>5.87%</b>	<b>3.20%</b>	<b>6.77%</b>	<b>3.67%</b>	<b>8.35%</b>	<b>9.50%</b>	<b>6.94%</b>
Dublin South City	4.12%	0.57%	4.69%	0.58%	5.26%	3.67%	4.43%	5.52%	10.47%	8.14%	10.52%
Dublin West	5.71%	0.70%	6.41%	1.40%	7.81%	1.25%	8.76%	4.97%	7.23%	0.00%	11.82%
Kildare/ West Wicklow	5.53%	0.55%	6.07%	0.42%	6.49%	0.62%	9.48%	0.00%	10.15%	5.56%	2.96%
<b>CHO 7</b>	<b>4.88%</b>	<b>0.60%</b>	<b>5.48%</b>	<b>0.78%</b>	<b>6.26%</b>	<b>2.30%</b>	<b>6.38%</b>	<b>4.41%</b>	<b>9.04%</b>	<b>7.06%</b>	<b>10.69%</b>
Laois /Offaly	5.37%	0.70%	6.07%	1.22%	7.29%	3.93%	7.01%	6.50%	12.06%	4.82%	8.02%
Longford/ Westmeath	4.83%	0.50%	5.33%	0.82%	6.15%	0.42%	7.11%	10.21%	10.21%	5.49%	1.44%
Louth	7.80%	0.61%	8.41%	0.63%	9.04%	1.42%	10.01%	10.61%	7.89%	15.80%	9.45%
Meath	2.98%	0.37%	3.35%	1.35%	4.70%	12.08%	2.57%	2.18%	4.96%		
<b>CHO 8</b>	<b>6.17%</b>	<b>0.60%</b>	<b>6.78%</b>	<b>0.87%</b>	<b>7.65%</b>	<b>2.46%</b>	<b>8.28%</b>	<b>8.51%</b>	<b>9.58%</b>	<b>9.05%</b>	<b>6.72%</b>
Dublin North	4.22%	0.76%	4.97%	0.77%	5.75%	4.39%	4.41%	7.53%	8.54%	6.51%	7.14%
Dublin North Central	3.23%	0.50%	3.74%	0.04%	3.78%	0.59%	3.16%	2.21%	10.67%	2.24%	12.38%
Dublin North-West	4.25%	0.85%	5.10%	0.64%	5.74%	5.34%	4.96%	3.16%	5.83%	12.07%	8.98%
<b>CHO 9</b>	<b>3.89%</b>	<b>0.70%</b>	<b>4.59%</b>	<b>0.48%</b>	<b>5.06%</b>	<b>2.91%</b>	<b>4.20%</b>	<b>3.83%</b>	<b>8.24%</b>	<b>6.32%</b>	<b>8.64%</b>
Other Community Services	4.31%	1.08%	5.38%	0.36%	5.74%	3.76%	6.42%	5.11%	3.14%	17.34%	4.69%
<b>Other Community Services</b>	<b>4.31%</b>	<b>1.08%</b>	<b>5.38%</b>	<b>0.36%</b>	<b>5.74%</b>	<b>3.76%</b>	<b>6.42%</b>	<b>5.11%</b>	<b>3.14%</b>	<b>17.34%</b>	<b>4.69%</b>
<b>Community Services</b>	<b>5.54%</b>	<b>0.58%</b>	<b>6.11%</b>	<b>0.55%</b>	<b>6.66%</b>	<b>3.33%</b>	<b>7.05%</b>	<b>5.24%</b>	<b>7.04%</b>	<b>7.98%</b>	<b>8.59%</b>

Total Absence Rate



% of Absence Non Covid-19 / Covid-19



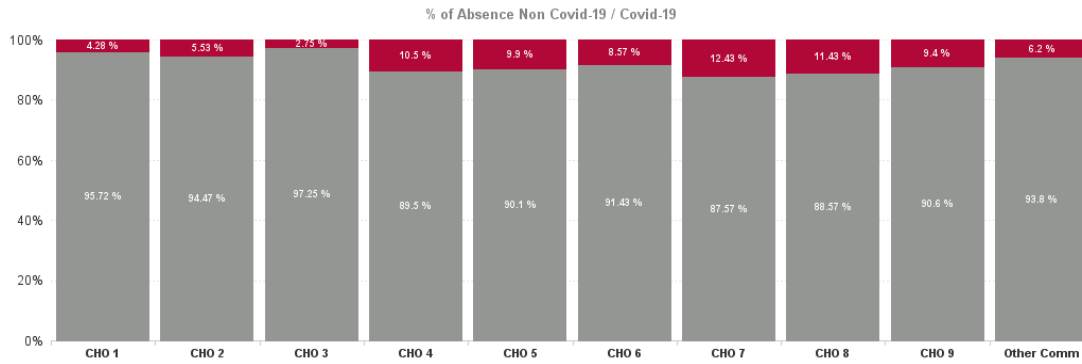
## September 2024

Health Service Covid 19 Absence Rate - by Hospital & Staff Category: Sep 2024	Non Covid-19 absence	Covid-19 absence	Total absence rate	Medical & Dental	Nursing & Midwifery	Health & Social Care Professionals	Management & Administrative	General Support	Patient & Client Care
<b>Mental Health</b>	<b>6.11%</b>	<b>0.55%</b>	<b>6.66%</b>	<b>0.21%</b>	<b>0.71%</b>	<b>0.37%</b>	<b>0.39%</b>	<b>0.69%</b>	<b>0.47%</b>
Cavan/ Monaghan	6.24%	0.34%	6.57%	0.00%	0.48%	0.00%	0.33%	0.00%	0.47%
Donegal	8.91%	0.45%	9.36%	0.00%	0.49%	0.79%	0.68%	0.00%	0.00%
Other CHO 1	4.76%	0.00%	4.76%				0.00%		
Sligo/ Leitrim	6.69%	0.18%	6.88%	0.00%	0.27%	0.00%	0.00%	0.42%	0.00%
<b>CHO 1</b>	<b>7.31%</b>	<b>0.33%</b>	<b>7.64%</b>	<b>0.00%</b>	<b>0.42%</b>	<b>0.31%</b>	<b>0.34%</b>	<b>0.24%</b>	<b>0.28%</b>
Galway	5.15%	0.26%	5.41%	0.00%	0.35%	0.32%	0.00%	0.00%	0.34%
Mayo	7.01%	0.52%	7.53%	0.00%	0.79%	0.00%	0.00%	2.14%	0.22%
Other CHO 2	5.38%	0.00%	5.38%			0.00%	0.00%		
Roscommon	9.44%	0.53%	9.97%	0.00%	0.68%	0.00%	0.00%	0.00%	1.02%
<b>CHO 2</b>	<b>6.22%</b>	<b>0.36%</b>	<b>6.59%</b>	<b>0.00%</b>	<b>0.54%</b>	<b>0.20%</b>	<b>0.00%</b>	<b>0.52%</b>	<b>0.40%</b>
Clare	7.54%	0.27%	7.81%	0.00%	0.17%	0.30%	0.32%	0.00%	0.59%
Limerick	9.23%	0.24%	9.47%	0.00%	0.31%	0.35%	0.00%	0.49%	0.00%
Tipperary, North/ Limerick, East	2.83%	0.00%	2.83%	0.00%	0.00%	0.00%	0.00%		
<b>CHO 3</b>	<b>8.44%</b>	<b>0.24%</b>	<b>8.68%</b>	<b>0.00%</b>	<b>0.25%</b>	<b>0.33%</b>	<b>0.07%</b>	<b>0.35%</b>	<b>0.30%</b>
Cork North	7.80%	0.77%	8.57%	0.00%	1.10%	1.18%	0.00%	1.75%	0.00%
Cork North Lee	4.00%	0.57%	4.57%	0.82%	0.77%	0.32%	0.00%	8.67%	0.00%
Cork South Lee	4.47%	0.41%	4.88%	0.36%	0.55%	0.00%	0.59%	3.90%	0.00%
Cork West	9.16%	1.33%	10.49%	3.27%	1.53%	2.04%	0.00%		0.00%
Kerry	5.33%	0.66%	5.99%	0.00%	0.79%	1.43%	0.87%	0.49%	0.00%
<b>CHO 4</b>	<b>5.44%</b>	<b>0.64%</b>	<b>6.08%</b>	<b>0.51%</b>	<b>0.84%</b>	<b>0.52%</b>	<b>0.32%</b>	<b>1.47%</b>	<b>0.00%</b>
Carlow/ Kilkenny	6.97%	1.02%	7.99%	0.00%	1.65%	0.74%	0.00%	0.72%	0.00%
Tipperary, South	4.59%	0.25%	4.84%	0.00%	0.14%	1.59%	0.00%	0.33%	0.00%
Waterford	6.62%	0.29%	6.91%	0.00%	0.35%	0.00%	0.00%	0.86%	0.00%
Wexford	7.67%	1.07%	8.74%	0.00%	1.41%	0.39%	1.02%	2.59%	0.54%
<b>CHO 5</b>	<b>6.60%</b>	<b>0.73%</b>	<b>7.32%</b>	<b>0.00%</b>	<b>1.02%</b>	<b>0.57%</b>	<b>0.28%</b>	<b>0.77%</b>	<b>0.20%</b>
Dublin South-East	3.90%	0.23%	4.12%	0.00%	0.27%	0.00%	0.00%	2.69%	0.00%
Dun Laoghaire	1.06%	0.00%	1.06%			0.00%			
Wicklow	6.46%	0.70%	7.16%	0.00%	1.98%	0.09%	0.00%	1.79%	0.00%
<b>CHO 6</b>	<b>5.37%</b>	<b>0.50%</b>	<b>5.87%</b>	<b>0.00%</b>	<b>1.04%</b>	<b>0.06%</b>	<b>0.00%</b>	<b>2.06%</b>	<b>0.00%</b>
Dublin South City	4.69%	0.58%	5.26%	0.31%	0.87%	0.34%	0.00%	0.00%	0.00%
Dublin West	6.41%	1.40%	7.81%	0.00%	0.00%	0.93%	0.85%	0.00%	3.32%
Kildare/ West Wicklow	6.07%	0.42%	6.49%	0.15%	0.57%	0.00%	0.87%	0.00%	0.00%
<b>CHO 7</b>	<b>5.48%</b>	<b>0.78%</b>	<b>6.26%</b>	<b>0.19%</b>	<b>0.67%</b>	<b>0.47%</b>	<b>0.55%</b>	<b>0.00%</b>	<b>2.39%</b>
Laos /Offaly	6.07%	1.22%	7.29%	1.10%	1.77%	0.63%	1.37%	1.72%	0.34%
Longford/ Westmeath	5.33%	0.82%	6.15%	0.00%	1.21%	0.40%	0.91%	0.00%	0.52%
Louth	8.41%	0.63%	9.04%	0.54%	0.74%	0.52%	0.88%	0.00%	0.33%
Meath	3.35%	1.35%	4.70%	0.00%	0.00%	2.18%	3.30%		
<b>CHO 8</b>	<b>6.78%</b>	<b>0.87%</b>	<b>7.65%</b>	<b>0.55%</b>	<b>1.15%</b>	<b>0.68%</b>	<b>1.10%</b>	<b>0.47%</b>	<b>0.38%</b>
Dublin North	4.97%	0.77%	5.75%	1.40%	0.67%	0.24%	1.90%	1.00%	0.30%
Dublin North Central	3.74%	0.04%	3.78%	0.00%	0.00%	0.05%	0.00%	0.36%	0.00%

Dublin North-West	5.10%	0.64%	5.74%	0.00%	0.82%	0.61%	1.20%	0.29%	0.00%
<b>CHO 9</b>	<b>4.59%</b>	<b>0.48%</b>	<b>5.06%</b>	<b>0.37%</b>	<b>0.50%</b>	<b>0.26%</b>	<b>1.01%</b>	<b>0.59%</b>	<b>0.16%</b>
Other Community Services	5.38%	0.36%	5.74%	0.00%	0.52%	0.00%	0.00%	0.00%	0.72%
<b>Other Community Services</b>	<b>5.38%</b>	<b>0.36%</b>	<b>5.74%</b>	<b>0.00%</b>	<b>0.52%</b>	<b>0.00%</b>	<b>0.00%</b>	<b>0.00%</b>	<b>0.72%</b>
<b>Community Services</b>	<b>6.11%</b>	<b>0.55%</b>	<b>6.66%</b>	<b>0.21%</b>	<b>0.71%</b>	<b>0.37%</b>	<b>0.39%</b>	<b>0.69%</b>	<b>0.47%</b>

September 2024

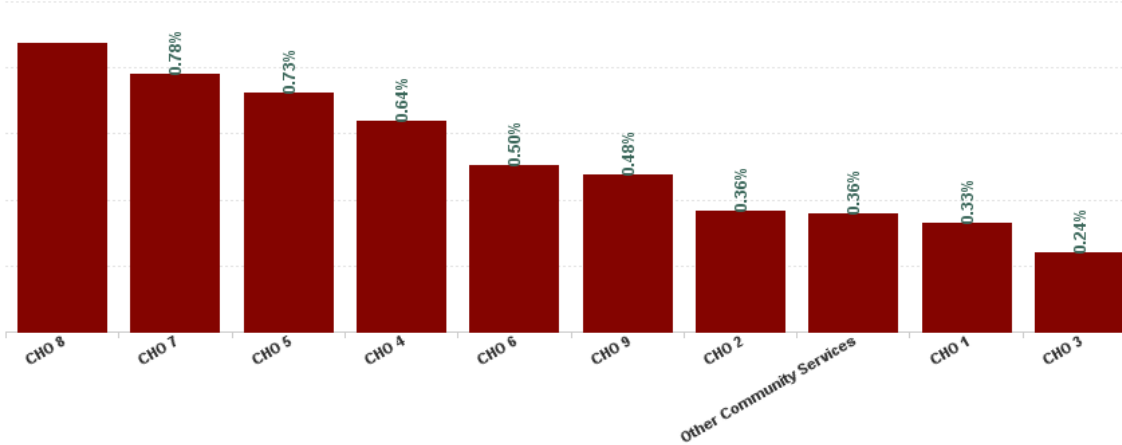
Health Service Absence Rate - by HG, CHO/Care Group & Staff Category: Sep 2024	Certified absence	Self-certified absence	Non Covid-19 absence	Covid-19 Absence	Total absence rate	Medical & Dental	Nursing & Midwifery	Health & Social Care Professionals	Management & Administrative	General Support	Patient & Client Care
Total	5.54%	0.58%	6.11%	0.55%	6.66%	3.33%	7.05%	5.24%	7.04%	7.98%	8.59%
Health Service Executive	6.91%	0.40%	7.31%	0.33%	7.64%	4.38%	8.12%	7.07%	7.58%	8.80%	8.91%
<b>CHO 1</b>	<b>6.91%</b>	<b>0.40%</b>	<b>7.31%</b>	<b>0.33%</b>	<b>7.64%</b>	<b>4.38%</b>	<b>8.12%</b>	<b>7.07%</b>	<b>7.58%</b>	<b>8.80%</b>	<b>8.91%</b>
Health Service Executive	5.81%	0.41%	6.22%	0.36%	6.59%	1.98%	8.01%	6.30%	3.80%	7.05%	7.19%
<b>CHO 2</b>	<b>5.81%</b>	<b>0.41%</b>	<b>6.22%</b>	<b>0.36%</b>	<b>6.59%</b>	<b>1.98%</b>	<b>8.01%</b>	<b>6.30%</b>	<b>3.80%</b>	<b>7.05%</b>	<b>7.19%</b>
Health Service Executive	7.77%	0.67%	8.44%	0.24%	8.68%	2.24%	9.55%	2.74%	9.17%	7.36%	18.66%
<b>CHO 3</b>	<b>7.77%</b>	<b>0.67%</b>	<b>8.44%</b>	<b>0.24%</b>	<b>8.68%</b>	<b>2.24%</b>	<b>9.55%</b>	<b>2.74%</b>	<b>9.17%</b>	<b>7.36%</b>	<b>18.66%</b>
Health Service Executive	5.00%	0.44%	5.44%	0.64%	6.08%	4.93%	6.38%	5.32%	3.01%	5.95%	9.37%
<b>CHO 4</b>	<b>5.00%</b>	<b>0.44%</b>	<b>5.44%</b>	<b>0.64%</b>	<b>6.08%</b>	<b>4.93%</b>	<b>6.38%</b>	<b>5.32%</b>	<b>3.01%</b>	<b>5.95%</b>	<b>9.37%</b>
Health Service Executive	6.01%	0.59%	6.60%	0.73%	7.32%	4.94%	7.28%	6.16%	11.10%	7.92%	5.62%
<b>CHO 5</b>	<b>6.01%</b>	<b>0.59%</b>	<b>6.60%</b>	<b>0.73%</b>	<b>7.32%</b>	<b>4.94%</b>	<b>7.28%</b>	<b>6.16%</b>	<b>11.10%</b>	<b>7.92%</b>	<b>5.62%</b>
Health Service Executive	3.81%	0.67%	4.49%	0.72%	5.21%	0.28%	5.91%	2.38%	8.11%	11.31%	5.11%
Section 38 Voluntary Agencies	6.25%	0.42%	6.67%	0.18%	6.85%	4.96%	9.31%	4.46%	8.49%	2.67%	26.51%
<b>CHO 6</b>	<b>4.80%</b>	<b>0.57%</b>	<b>5.37%</b>	<b>0.50%</b>	<b>5.87%</b>	<b>3.20%</b>	<b>6.77%</b>	<b>3.67%</b>	<b>8.35%</b>	<b>9.50%</b>	<b>6.94%</b>
Health Service Executive	4.88%	0.60%	5.48%	0.78%	6.26%	2.30%	6.38%	4.41%	9.04%	7.06%	10.69%
<b>CHO 7</b>	<b>4.88%</b>	<b>0.60%</b>	<b>5.48%</b>	<b>0.78%</b>	<b>6.26%</b>	<b>2.30%</b>	<b>6.38%</b>	<b>4.41%</b>	<b>9.04%</b>	<b>7.06%</b>	<b>10.69%</b>
Health Service Executive	6.17%	0.60%	6.78%	0.87%	7.65%	2.46%	8.28%	8.51%	9.58%	9.05%	6.72%
<b>CHO 8</b>	<b>6.17%</b>	<b>0.60%</b>	<b>6.78%</b>	<b>0.87%</b>	<b>7.65%</b>	<b>2.46%</b>	<b>8.28%</b>	<b>8.51%</b>	<b>9.58%</b>	<b>9.05%</b>	<b>6.72%</b>
Health Service Executive	4.18%	0.71%	4.89%	0.55%	5.44%	3.04%	4.65%	3.90%	8.89%	8.15%	8.86%
Section 38 Voluntary Agencies	2.30%	0.64%	2.94%	0.07%	3.01%	0.00%	2.30%	1.45%	5.44%	2.52%	6.94%
<b>CHO 9</b>	<b>3.89%</b>	<b>0.70%</b>	<b>4.59%</b>	<b>0.48%</b>	<b>5.06%</b>	<b>2.91%</b>	<b>4.20%</b>	<b>3.83%</b>	<b>8.24%</b>	<b>6.32%</b>	<b>8.64%</b>
Health Service Executive	4.31%	1.08%	5.38%	0.36%	5.74%	3.76%	6.42%	5.11%	3.14%	17.34%	4.69%
<b>Other Community Services</b>	<b>4.31%</b>	<b>1.08%</b>	<b>5.38%</b>	<b>0.36%</b>	<b>5.74%</b>	<b>3.76%</b>	<b>6.42%</b>	<b>5.11%</b>	<b>3.14%</b>	<b>17.34%</b>	<b>4.69%</b>
Community Services	5.54%	0.58%	6.11%	0.55%	6.66%	3.33%	7.05%	5.24%	7.04%	7.98%	8.59%



## September 2024

Health Service Covid 19 Absence Rate - by Hospital & Staff Category: Sep 2024	Non Covid-19 absence	Covid-19 Absence	Total absence rate	Medical & Dental	Nursing & Midwifery	Health & Social Care Professionals	Management & Administrative	General Support	Patient & Client Care
<b>Mental Health</b>	6.11%	0.55%	6.66%	0.21%	0.71%	0.37%	0.39%	0.69%	0.47%
Health Service Executive	7.31%	0.33%	7.64%	0.00%	0.42%	0.31%	0.34%	0.24%	0.28%
<b>CHO 1</b>	<b>7.31%</b>	<b>0.33%</b>	<b>7.64%</b>	<b>0.00%</b>	<b>0.42%</b>	<b>0.31%</b>	<b>0.34%</b>	<b>0.24%</b>	<b>0.28%</b>
Health Service Executive	6.22%	0.36%	6.59%	0.00%	0.54%	0.20%	0.00%	0.52%	0.40%
<b>CHO 2</b>	<b>6.22%</b>	<b>0.36%</b>	<b>6.59%</b>	<b>0.00%</b>	<b>0.54%</b>	<b>0.20%</b>	<b>0.00%</b>	<b>0.52%</b>	<b>0.40%</b>
Health Service Executive	8.44%	0.24%	8.68%	0.00%	0.25%	0.33%	0.07%	0.35%	0.30%
<b>CHO 3</b>	<b>8.44%</b>	<b>0.24%</b>	<b>8.68%</b>	<b>0.00%</b>	<b>0.25%</b>	<b>0.33%</b>	<b>0.07%</b>	<b>0.35%</b>	<b>0.30%</b>
Health Service Executive	5.44%	0.64%	6.08%	0.51%	0.84%	0.52%	0.32%	1.47%	0.00%
<b>CHO 4</b>	<b>5.44%</b>	<b>0.64%</b>	<b>6.08%</b>	<b>0.51%</b>	<b>0.84%</b>	<b>0.52%</b>	<b>0.32%</b>	<b>1.47%</b>	<b>0.00%</b>
Health Service Executive	6.60%	0.73%	7.32%	0.00%	1.02%	0.57%	0.28%	0.77%	0.20%
<b>CHO 5</b>	<b>6.60%</b>	<b>0.73%</b>	<b>7.32%</b>	<b>0.00%</b>	<b>1.02%</b>	<b>0.57%</b>	<b>0.28%</b>	<b>0.77%</b>	<b>0.20%</b>
Health Service Executive	4.49%	0.72%	5.21%	0.00%	1.19%	0.00%	0.00%	2.60%	0.00%
Section 38 Voluntary Agencies	6.67%	0.18%	6.85%	0.00%	0.62%	0.10%	0.00%	0.00%	0.00%
<b>CHO 6</b>	<b>5.37%</b>	<b>0.50%</b>	<b>5.87%</b>	<b>0.00%</b>	<b>1.04%</b>	<b>0.06%</b>	<b>0.00%</b>	<b>2.06%</b>	<b>0.00%</b>
Health Service Executive	5.48%	0.78%	6.26%	0.19%	0.67%	0.47%	0.55%	0.00%	2.39%
<b>CHO 7</b>	<b>5.48%</b>	<b>0.78%</b>	<b>6.26%</b>	<b>0.19%</b>	<b>0.67%</b>	<b>0.47%</b>	<b>0.55%</b>	<b>0.00%</b>	<b>2.39%</b>
Health Service Executive	6.78%	0.87%	7.65%	0.55%	1.15%	0.68%	1.10%	0.47%	0.38%
<b>CHO 8</b>	<b>6.78%</b>	<b>0.87%</b>	<b>7.65%</b>	<b>0.55%</b>	<b>1.15%</b>	<b>0.68%</b>	<b>1.10%</b>	<b>0.47%</b>	<b>0.38%</b>
Health Service Executive	4.89%	0.55%	5.44%	0.39%	0.62%	0.27%	1.24%	0.68%	0.18%
Section 38 Voluntary Agencies	2.94%	0.07%	3.01%	0.00%	0.00%	0.00%	0.00%	0.40%	0.00%
<b>CHO 9</b>	<b>4.59%</b>	<b>0.48%</b>	<b>5.06%</b>	<b>0.37%</b>	<b>0.50%</b>	<b>0.26%</b>	<b>1.01%</b>	<b>0.59%</b>	<b>0.16%</b>
Health Service Executive	5.38%	0.36%	5.74%	0.00%	0.52%	0.00%	0.00%	0.00%	0.72%
<b>Other Community Services</b>	<b>5.38%</b>	<b>0.36%</b>	<b>5.74%</b>	<b>0.00%</b>	<b>0.52%</b>	<b>0.00%</b>	<b>0.00%</b>	<b>0.00%</b>	<b>0.72%</b>
<b>Community Services</b>	<b>6.11%</b>	<b>0.55%</b>	<b>6.66%</b>	<b>0.21%</b>	<b>0.71%</b>	<b>0.37%</b>	<b>0.39%</b>	<b>0.69%</b>	<b>0.47%</b>

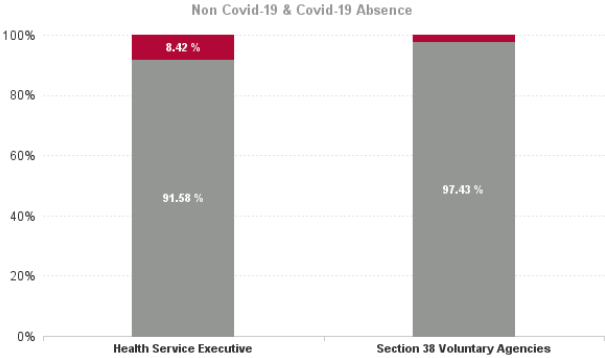
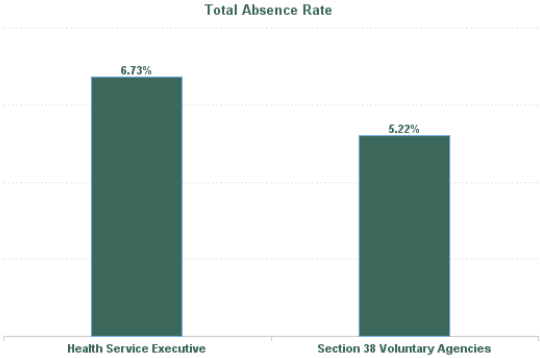
Covid 19 Absence Rate





September 2024

Health Service Absence Rate - by Admin : Sep 2024	Certified absence	Self-certified absence	Non Covid-19 absence	Covid-19 Absence	Total absence rate	Medical & Dental	Nursing & Midwifery	Health & Social Care Professionals	Management & Administrative	General Support	Patient & Client Care
Total	5.54%	0.58%	6.11%	0.55%	6.66%	3.33%	7.05%	5.24%	7.04%	7.98%	8.59%
Health Service Executive	5.58%	0.58%	6.16%	0.57%	6.73%	3.26%	7.14%	5.31%	7.01%	8.35%	8.52%
Section 38 Voluntary Agencies	4.57%	0.51%	5.08%	0.13%	5.22%	4.50%	4.86%	4.32%	7.41%	2.55%	12.23%



Health Service Absence Rate - by Staff Category: Sep 2024	Certified absence	Self-certified absence	Non Covid-19 absence	Covid-19 Absence	Total absence rate	% Non Covid-19 absence	% Covid-19 absence
<b>CHO 1</b>	<b>6.91%</b>	<b>0.40%</b>	<b>7.31%</b>	<b>0.33%</b>	<b>7.64%</b>	<b>95.72%</b>	<b>4.28%</b>
Medical & Dental	3.72%	0.66%	4.38%	0.00%	4.38%	100.00%	0.00%
Nursing & Midwifery	7.20%	0.50%	7.70%	0.42%	8.12%	94.85%	5.15%
Health & Social Care Professionals	6.54%	0.22%	6.76%	0.31%	7.07%	95.56%	4.44%
Management & Administrative	7.11%	0.13%	7.24%	0.34%	7.58%	95.50%	4.50%
General Support	8.31%	0.25%	8.56%	0.24%	8.80%	97.31%	2.69%
Patient & Client Care	8.36%	0.27%	8.63%	0.28%	8.91%	96.83%	3.17%

Health Service Absence Rate - by Staff Category: Sep 2024	Certified absence	Self-certified absence	Non Covid-19 absence	Covid-19 Absence	Total absence rate	% Non Covid-19 absence	% Covid-19 absence
<b>CHO 2</b>	<b>5.81%</b>	<b>0.41%</b>	<b>6.22%</b>	<b>0.36%</b>	<b>6.59%</b>	<b>94.47%</b>	<b>5.53%</b>
Medical & Dental	1.54%	0.44%	1.98%	0.00%	1.98%	100.00%	0.00%
Nursing & Midwifery	7.00%	0.47%	7.47%	0.54%	8.01%	93.25%	6.75%
Health & Social Care Professionals	5.72%	0.38%	6.10%	0.20%	6.30%	96.83%	3.17%
Management & Administrative	3.56%	0.23%	3.80%	0.00%	3.80%	100.00%	0.00%
General Support	6.21%	0.32%	6.53%	0.52%	7.05%	92.61%	7.39%
Patient & Client Care	6.40%	0.39%	6.79%	0.40%	7.19%	94.43%	5.57%

Health Service Absence Rate - by Staff Category: Sep 2024	Certified absence	Self-certified absence	Non Covid-19 absence	Covid-19 Absence	Total absence rate	% Non Covid-19 absence	% Covid-19 absence
<b>CHO 3</b>	<b>7.77%</b>	<b>0.67%</b>	<b>8.44%</b>	<b>0.24%</b>	<b>8.68%</b>	<b>97.25%</b>	<b>2.75%</b>
Medical & Dental	1.94%	0.31%	2.24%	0.00%	2.24%	100.00%	0.00%
Nursing & Midwifery	8.49%	0.82%	9.30%	0.25%	9.55%	97.41%	2.59%
Health & Social Care Professionals	2.13%	0.28%	2.41%	0.33%	2.74%	87.89%	12.11%
Management & Administrative	8.27%	0.83%	9.09%	0.07%	9.17%	99.20%	0.80%
General Support	6.54%	0.48%	7.02%	0.35%	7.36%	95.30%	4.70%
Patient & Client Care	17.45%	0.90%	18.35%	0.30%	18.66%	98.37%	1.63%

Health Service Absence Rate - by Staff Category: Sep 2024	Certified absence	Self-certified absence	Non Covid-19 absence	Covid-19 Absence	Total absence rate	% Non Covid-19 absence	% Covid-19 absence
<b>CHO 4</b>	<b>5.00%</b>	<b>0.44%</b>	<b>5.44%</b>	<b>0.64%</b>	<b>6.08%</b>	<b>89.50%</b>	<b>10.50%</b>
Medical & Dental	4.12%	0.29%	4.41%	0.51%	4.93%	89.62%	10.38%
Nursing & Midwifery	5.08%	0.46%	5.54%	0.84%	6.38%	86.84%	13.16%
Health & Social Care Professionals	4.48%	0.31%	4.80%	0.52%	5.32%	90.21%	9.79%
Management & Administrative	2.37%	0.32%	2.69%	0.32%	3.01%	89.40%	10.60%
General Support	4.03%	0.45%	4.48%	1.47%	5.95%	75.27%	24.73%
Patient & Client Care	8.59%	0.78%	9.37%	0.00%	9.37%	100.00%	0.00%

Health Service Absence Rate - by Staff Category: Sep 2024	Certified absence	Self-certified absence	Non Covid-19 absence	Covid-19 Absence	Total absence rate	% Non Covid-19 absence	% Covid-19 absence
<b>CHO 5</b>	<b>6.01%</b>	<b>0.59%</b>	<b>6.60%</b>	<b>0.73%</b>	<b>7.32%</b>	<b>90.10%</b>	<b>9.90%</b>
Medical & Dental	4.35%	0.59%	4.94%	0.00%	4.94%	100.00%	0.00%
Nursing & Midwifery	5.78%	0.49%	6.27%	1.02%	7.28%	86.02%	13.98%
Health & Social Care Professionals	4.73%	0.87%	5.59%	0.57%	6.16%	90.82%	9.18%
Management & Administrative	10.49%	0.33%	10.82%	0.28%	11.10%	97.45%	2.55%
General Support	6.24%	0.91%	7.15%	0.77%	7.92%	90.26%	9.74%
Patient & Client Care	4.81%	0.60%	5.41%	0.20%	5.62%	96.37%	3.63%

Health Service Absence Rate - by Staff Category: Sep 2024	Certified absence	Self-certified absence	Non Covid-19 absence	Covid-19 Absence	Total absence rate	% Non Covid-19 absence	% Covid-19 absence
<b>CHO 6</b>	<b>4.80%</b>	<b>0.57%</b>	<b>5.37%</b>	<b>0.50%</b>	<b>5.87%</b>	<b>91.43%</b>	<b>8.57%</b>
Medical & Dental	3.10%	0.11%	3.20%	0.00%	3.20%	100.00%	0.00%
Nursing & Midwifery	4.76%	0.96%	5.72%	1.04%	6.77%	84.56%	15.44%
Health & Social Care Professionals	3.37%	0.24%	3.61%	0.06%	3.67%	98.34%	1.66%
Management & Administrative	7.74%	0.62%	8.35%	0.00%	8.35%	100.00%	0.00%
General Support	6.84%	0.60%	7.45%	2.06%	9.50%	78.34%	21.66%
Patient & Client Care	6.54%	0.39%	6.94%	0.00%	6.94%	100.00%	0.00%

Health Service Absence Rate - by Staff Category: Sep 2024	Certified absence	Self-certified absence	Non Covid-19 absence	Covid-19 Absence	Total absence rate	% Non Covid-19 absence	% Covid-19 absence
<b>CHO 7</b>	<b>4.88%</b>	<b>0.60%</b>	<b>5.48%</b>	<b>0.78%</b>	<b>6.26%</b>	<b>87.57%</b>	<b>12.43%</b>
Medical & Dental	1.89%	0.22%	2.12%	0.19%	2.30%	91.93%	8.07%
Nursing & Midwifery	5.08%	0.63%	5.71%	0.67%	6.38%	89.43%	10.57%
Health & Social Care Professionals	3.45%	0.49%	3.94%	0.47%	4.41%	89.40%	10.60%
Management & Administrative	7.86%	0.63%	8.48%	0.55%	9.04%	93.89%	6.11%
General Support	6.55%	0.50%	7.06%	0.00%	7.06%	100.00%	0.00%
Patient & Client Care	7.23%	1.08%	8.31%	2.39%	10.69%	77.69%	22.31%

Health Service Absence Rate - by Staff Category: Sep 2024	Certified absence	Self-certified absence	Non Covid-19 absence	Covid-19 Absence	Total absence rate	% Non Covid-19 absence	% Covid-19 absence
<b>CHO 8</b>	<b>6.17%</b>	<b>0.60%</b>	<b>6.78%</b>	<b>0.87%</b>	<b>7.65%</b>	<b>88.57%</b>	<b>11.43%</b>
Medical & Dental	1.38%	0.54%	1.91%	0.55%	2.46%	77.74%	22.26%
Nursing & Midwifery	6.44%	0.69%	7.13%	1.15%	8.28%	86.14%	13.86%
Health & Social Care Professionals	7.56%	0.27%	7.83%	0.68%	8.51%	91.97%	8.03%
Management & Administrative	8.00%	0.49%	8.49%	1.10%	9.58%	88.57%	11.43%
General Support	8.29%	0.29%	8.58%	0.47%	9.05%	94.76%	5.24%
Patient & Client Care	5.50%	0.84%	6.33%	0.38%	6.72%	94.29%	5.71%

Health Service Absence Rate - by Staff Category: Sep 2024	Certified absence	Self-certified absence	Non Covid-19 absence	Covid-19 Absence	Total absence rate	% Non Covid-19 absence	% Covid-19 absence
<b>CHO 9</b>	<b>3.89%</b>	<b>0.70%</b>	<b>4.59%</b>	<b>0.48%</b>	<b>5.06%</b>	<b>90.60%</b>	<b>9.40%</b>
Medical & Dental	2.05%	0.49%	2.55%	0.37%	2.91%	87.33%	12.67%
Nursing & Midwifery	3.03%	0.66%	3.69%	0.50%	4.20%	88.01%	11.99%
Health & Social Care Professionals	2.99%	0.58%	3.57%	0.26%	3.83%	93.22%	6.78%
Management & Administrative	6.23%	1.01%	7.24%	1.01%	8.24%	87.80%	12.20%
General Support	4.91%	0.81%	5.73%	0.59%	6.32%	90.63%	9.37%
Patient & Client Care	7.62%	0.86%	8.48%	0.16%	8.64%	98.16%	1.84%

Health Service Absence Rate - by Staff Category: Sep 2024	Certified absence	Self-certified absence	Non Covid-19 absence	Covid-19 Absence	Total absence rate	% Non Covid-19 absence	% Covid-19 absence
<b>Other Comm</b>	<b>4.31%</b>	<b>1.08%</b>	<b>5.38%</b>	<b>0.36%</b>	<b>5.74%</b>	<b>93.80%</b>	<b>6.20%</b>
Medical & Dental	3.42%	0.33%	3.76%	0.00%	3.76%	100.00%	0.00%
Nursing & Midwifery	4.34%	1.56%	5.90%	0.52%	6.42%	91.94%	8.06%
Health & Social Care Professionals	4.35%	0.76%	5.11%	0.00%	5.11%	100.00%	0.00%
Management & Administrative	2.90%	0.24%	3.14%	0.00%	3.14%	100.00%	0.00%
General Support	16.30%	1.04%	17.34%	0.00%	17.34%	100.00%	0.00%
Patient & Client Care	2.79%	1.18%	3.97%	0.72%	4.69%	84.67%	15.33%

Health Service Absence Rate - by Staff Category: Sep 2024	Certified absence	Self-certified absence	Non Covid-19 absence	Covid-19 Absence	Total absence rate	% Non Covid-19 absence	% Covid-19 absence
<b>St. John of God (MHS)</b>	<b>6.25%</b>	<b>0.42%</b>	<b>6.67%</b>	<b>0.18%</b>	<b>6.85%</b>	<b>97.35%</b>	<b>2.65%</b>
Medical & Dental	4.96%	0.00%	4.96%	0.00%	4.96%	100.00%	0.00%
Nursing & Midwifery	7.86%	0.83%	8.69%	0.62%	9.31%	93.35%	6.65%
Health & Social Care Professionals	4.07%	0.29%	4.36%	0.10%	4.46%	97.81%	2.19%
Management & Administrative	7.74%	0.76%	8.49%	0.00%	8.49%	100.00%	0.00%
General Support	2.67%	0.00%	2.67%	0.00%	2.67%	100.00%	0.00%
Patient & Client Care	26.51%	0.00%	26.51%	0.00%	26.51%	100.00%	0.00%

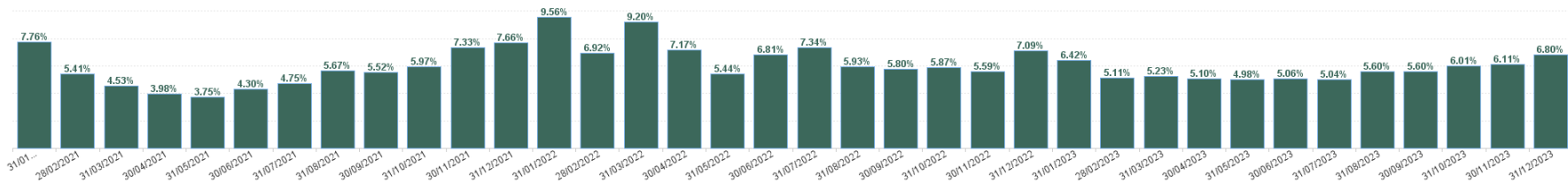
Health Service Absence Rate - by Staff Category: Sep 2024	Certified absence	Self-certified absence	Non Covid-19 absence	Covid-19 Absence	Total absence rate	% Non Covid-19 absence	% Covid-19 absence
<b>St. Vincent's, Fairview</b>	<b>2.30%</b>	<b>0.64%</b>	<b>2.94%</b>	<b>0.07%</b>	<b>3.01%</b>	<b>97.66%</b>	<b>2.34%</b>
Medical & Dental	0.00%	0.00%	0.00%	0.00%	0.00%		
Nursing & Midwifery	2.04%	0.26%	2.30%	0.00%	2.30%	100.00%	0.00%
Health & Social Care Professionals	0.00%	1.45%	1.45%	0.00%	1.45%	100.00%	0.00%
Management & Administrative	3.74%	1.70%	5.44%	0.00%	5.44%	100.00%	0.00%
General Support	0.79%	1.33%	2.12%	0.40%	2.52%	84.04%	15.96%
Patient & Client Care	6.63%	0.32%	6.94%	0.00%	6.94%	100.00%	0.00%

Year / Month	Certified absence	Self-certified absence	Non Covid-19 absence	Covid-19 Absence	Total absence rate	Medical & Dental	Nursing & Midwifery	Health & Social Care Professionals	Management & Administrative	General Support	Patient & Client Care
Sep 2024	5.54%	0.58%	6.11%	0.55%	6.66%	3.33%	7.05%	5.24%	7.04%	7.98%	8.59%
Aug 2024	5.64%	0.52%	6.15%	0.74%	6.90%	2.64%	7.39%	6.44%	6.85%	8.01%	8.64%
Jul 2024	5.84%	0.51%	6.35%	1.04%	7.39%	2.63%	8.08%	6.44%	7.45%	9.15%	9.01%
Jun 2024	5.36%	0.57%	5.93%	0.69%	6.62%	3.30%	7.10%	5.78%	6.34%	7.93%	7.70%
May 2024	5.15%	0.51%	5.66%	0.26%	5.92%	2.58%	6.38%	4.86%	5.63%	6.86%	7.82%
Apr 2024	5.16%	0.56%	5.71%	0.18%	5.89%	2.15%	6.24%	4.66%	5.50%	8.00%	8.02%
Mar 2024	5.22%	0.55%	5.77%	0.18%	5.96%	1.78%	6.35%	5.34%	5.74%	7.66%	7.56%
Feb 2024	5.12%	0.55%	5.67%	0.28%	5.95%	2.63%	6.02%	5.90%	5.85%	7.21%	7.72%
Jan 2024	5.44%	0.60%	6.04%	0.56%	6.61%	2.66%	6.68%	6.31%	8.04%	8.04%	7.58%
<b>2024</b>	<b>5.38%</b>	<b>0.55%</b>	<b>5.93%</b>	<b>0.49%</b>	<b>6.43%</b>	<b>2.63%</b>	<b>6.80%</b>	<b>5.65%</b>	<b>6.52%</b>	<b>7.87%</b>	<b>8.06%</b>
Dec 2023	5.47%	0.67%	6.13%	0.66%	6.80%	2.57%	7.35%	6.63%	6.38%	7.20%	8.05%
Nov 2023	5.14%	0.57%	5.71%	0.40%	6.11%	2.25%	6.51%	4.99%	5.78%	8.15%	8.08%
Oct 2023	4.95%	0.54%	5.49%	0.52%	6.01%	2.35%	6.48%	5.05%	5.48%	8.67%	7.12%
Sep 2023	4.43%	0.49%	4.92%	0.68%	5.60%	1.58%	6.23%	4.69%	5.35%	7.80%	6.54%
Aug 2023	4.45%	0.46%	4.91%	0.70%	5.60%	1.80%	5.89%	5.43%	5.35%	7.56%	6.72%
Jul 2023	4.15%	0.49%	4.64%	0.40%	5.04%	1.93%	5.54%	3.92%	3.64%	6.47%	6.76%
Jun 2023	4.30%	0.49%	4.79%	0.27%	5.06%	2.61%	5.14%	3.79%	4.15%	8.07%	7.01%
May 2023	4.14%	0.48%	4.62%	0.36%	4.98%	2.25%	5.58%	3.91%	3.60%	6.64%	6.21%
Apr 2023	4.22%	0.50%	4.72%	0.37%	5.10%	2.08%	5.68%	3.93%	3.89%	6.41%	6.45%
Mar 2023	4.29%	0.47%	4.76%	0.47%	5.23%	2.18%	5.52%	4.20%	4.00%	7.28%	7.45%
Feb 2023	4.25%	0.50%	4.75%	0.36%	5.11%	1.37%	5.72%	3.85%	4.03%	7.12%	6.56%
Jan 2023	5.02%	0.56%	5.58%	0.83%	6.42%	1.45%	7.25%	5.30%	5.43%	8.81%	7.07%
<b>2023</b>	<b>4.57%</b>	<b>0.52%</b>	<b>5.09%</b>	<b>0.50%</b>	<b>5.59%</b>	<b>2.05%</b>	<b>6.07%</b>	<b>4.63%</b>	<b>4.77%</b>	<b>7.52%</b>	<b>7.01%</b>
Dec 2022	5.31%	0.69%	6.00%	1.09%	7.09%	2.20%	8.01%	5.85%	6.65%	7.62%	8.27%
Nov 2022	4.46%	0.55%	5.01%	0.59%	5.59%	1.98%	6.39%	4.54%	5.00%	6.24%	6.59%
Oct 2022	4.60%	0.60%	5.19%	0.68%	5.87%	2.31%	6.94%	4.19%	4.06%	7.01%	6.80%
Sep 2022	4.64%	0.51%	5.15%	0.64%	5.80%	1.88%	6.85%	3.67%	4.31%	7.54%	7.26%
Aug 2022	4.61%	0.50%	5.11%	0.81%	5.93%	1.36%	7.14%	4.13%	4.61%	7.15%	6.55%
Jul 2022	4.85%	0.46%	5.31%	2.03%	7.34%	2.35%	8.29%	6.30%	5.35%	8.47%	8.66%
Jun 2022	4.46%	0.54%	5.01%	1.80%	6.81%	2.78%	7.74%	5.65%	5.64%	6.61%	8.13%
May 2022	4.07%	0.45%	4.52%	0.91%	5.44%	2.44%	6.07%	3.91%	3.85%	6.93%	7.00%
Apr 2022	4.15%	0.47%	4.61%	2.56%	7.17%	3.09%	7.99%	5.29%	5.62%	8.61%	9.06%
Mar 2022	4.50%	0.51%	5.01%	4.19%	9.20%	4.37%	10.45%	7.47%	7.28%	11.64%	10.10%
Feb 2022	3.81%	0.43%	4.24%	2.68%	6.92%	3.47%	7.95%	5.63%	5.27%	7.70%	7.55%
Jan 2022	3.88%	0.33%	4.21%	5.36%	9.56%	3.68%	11.10%	6.73%	7.18%	10.62%	11.43%
<b>2022</b>	<b>4.44%</b>	<b>0.50%</b>	<b>4.95%</b>	<b>1.94%</b>	<b>6.89%</b>	<b>2.66%</b>	<b>7.92%</b>	<b>5.26%</b>	<b>5.40%</b>	<b>8.00%</b>	<b>8.08%</b>
Dec 2021	4.33%	0.43%	4.76%	2.90%	7.66%	2.84%	9.05%	5.41%	5.17%	9.70%	8.72%
Nov 2021	4.53%	0.57%	5.10%	2.23%	7.33%	2.44%	8.46%	5.24%	5.38%	9.77%	9.10%
Oct 2021	4.32%	0.49%	4.82%	1.15%	5.97%	3.32%	6.82%	4.48%	4.17%	7.74%	6.41%
Sep 2021	4.08%	0.41%	4.49%	1.02%	5.52%	2.97%	6.35%	3.56%	4.70%	7.43%	6.00%
Aug 2021	4.33%	0.40%	4.73%	0.94%	5.67%	1.45%	6.58%	4.55%	4.53%	5.35%	7.31%
Jul 2021	3.66%	0.40%	4.06%	0.68%	4.75%	1.56%	5.43%	3.79%	3.78%	5.82%	5.76%
Jun 2021	3.44%	0.39%	3.83%	0.47%	4.30%	1.25%	4.82%	3.88%	2.64%	6.42%	5.26%
May 2021	2.88%	0.32%	3.19%	0.55%	3.75%	0.78%	4.46%	2.93%	2.01%	4.62%	4.99%
Apr 2021	3.04%	0.33%	3.37%	0.61%	3.98%	1.19%	4.76%	3.07%	2.52%	4.25%	5.29%
Mar 2021	3.21%	0.41%	3.62%	0.92%	4.53%	0.99%	5.22%	3.52%	3.23%	5.67%	6.11%
Feb 2021	3.45%	0.40%	3.84%	1.56%	5.41%	1.49%	6.43%	4.01%	4.16%	5.18%	7.24%
Jan 2021	3.73%	0.23%	3.96%	3.80%	7.76%	3.93%	9.63%	3.98%	4.59%	7.68%	9.58%
<b>2021</b>	<b>3.75%</b>	<b>0.40%</b>	<b>4.15%</b>	<b>1.41%</b>	<b>5.56%</b>	<b>2.02%</b>	<b>6.52%</b>	<b>4.04%</b>	<b>3.84%</b>	<b>6.66%</b>	<b>6.82%</b>

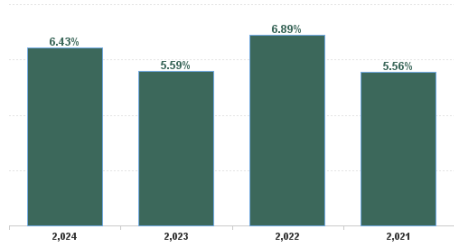


Year / Month	Certified absence	Self-certified absence	Non Covid-19 absence	Covid-19 Absence	Total absence rate	CHO 1	CHO 2	CHO 3	CHO 4	CHO 5	CHO 6	CHO 7	CHO 8	CHO 9	Other Comm	Mental Health
Sep 2024	5.54%	0.58%	6.11%	0.55%	6.66%	7.64%	6.59%	8.68%	6.08%	7.32%	5.87%	6.26%	7.65%	5.06%	5.74%	6.66%
Aug 2024	5.64%	0.52%	6.15%	0.74%	6.90%	7.93%	7.44%	7.94%	7.11%	6.68%	6.37%	6.79%	8.06%	5.58%	3.88%	6.90%
Jul 2024	5.84%	0.51%	6.35%	1.04%	7.39%	9.03%	7.86%	8.14%	7.31%	7.70%	5.69%	7.06%	8.02%	6.43%	5.24%	7.39%
Jun 2024	5.36%	0.57%	5.93%	0.69%	6.62%	8.13%	6.48%	6.17%	7.47%	7.14%	4.88%	6.81%	7.25%	5.19%	5.40%	6.62%
May 2024	5.15%	0.51%	5.66%	0.26%	5.92%	6.99%	5.86%	6.45%	6.32%	5.87%	6.06%	5.13%	6.64%	4.76%	4.73%	5.92%
Apr 2024	5.16%	0.56%	5.71%	0.18%	5.89%	7.17%	5.94%	6.76%	6.19%	6.33%	4.57%	5.64%	6.12%	5.07%	3.72%	5.89%
Mar 2024	5.22%	0.55%	5.77%	0.18%	5.96%	7.15%	5.34%	6.30%	5.80%	6.45%	4.75%	5.43%	7.03%	5.65%	5.40%	5.96%
Feb 2024	5.12%	0.55%	5.67%	0.28%	5.95%	7.01%	4.85%	6.41%	5.45%	6.59%	4.75%	6.23%	7.17%	5.44%	5.77%	5.95%
Jan 2024	5.44%	0.60%	6.04%	0.56%	6.61%	7.13%	6.06%	7.74%	6.79%	8.52%	5.90%	5.80%	7.51%	5.28%	4.98%	6.61%
2024	5.38%	0.55%	5.93%	0.49%	6.43%	7.57%	6.27%	7.18%	6.50%	6.97%	5.44%	6.12%	7.27%	5.38%	5.07%	6.43%
Dec 2023	5.47%	0.67%	6.13%	0.66%	6.80%	7.64%	5.86%	7.63%	6.54%	6.67%	5.64%	6.36%	7.70%	5.56%	6.49%	6.80%
Nov 2023	5.14%	0.57%	5.71%	0.40%	6.11%	7.56%	5.45%	7.44%	6.43%	6.61%	4.38%	6.21%	6.90%	5.07%	4.83%	6.11%
Oct 2023	4.95%	0.54%	5.49%	0.52%	6.01%	7.66%	4.07%	7.32%	6.67%	7.21%	4.61%	6.24%	5.73%	5.88%	4.44%	6.01%
Sep 2023	4.43%	0.49%	4.92%	0.68%	5.60%	7.41%	3.82%	6.59%	5.80%	6.63%	3.65%	7.29%	5.47%	4.83%	4.72%	5.60%
Aug 2023	4.45%	0.46%	4.91%	0.70%	5.60%	8.10%	3.19%	6.64%	6.32%	6.71%	4.67%	7.01%	6.11%	4.29%	3.79%	5.60%
Jul 2023	4.15%	0.49%	4.64%	0.40%	5.04%	7.15%	2.79%	6.07%	5.65%	5.77%	3.07%	6.09%	5.06%	4.34%	4.44%	5.04%
Jun 2023	4.30%	0.49%	4.79%	0.27%	5.06%	7.47%	2.91%	4.51%	5.77%	5.82%	3.27%	6.24%	5.43%	4.26%	4.78%	5.06%
May 2023	4.14%	0.48%	4.62%	0.36%	4.98%	7.22%	2.56%	5.54%	5.80%	5.72%	3.21%	5.46%	4.97%	4.24%	5.17%	4.98%
Apr 2023	4.22%	0.50%	4.72%	0.37%	5.10%	7.15%	2.79%	6.07%	5.65%	5.76%	3.39%	6.09%	5.04%	4.41%	4.87%	5.10%
Mar 2023	4.29%	0.47%	4.76%	0.47%	5.23%	7.22%	3.23%	6.51%	3.99%	6.39%	4.56%	6.59%	5.57%	4.74%	5.13%	5.23%
Feb 2023	4.25%	0.50%	4.75%	0.36%	5.11%	6.77%	2.80%	5.06%	5.58%	6.84%	3.84%	6.51%	5.39%	4.71%	3.72%	5.11%
Jan 2023	5.02%	0.56%	5.58%	0.83%	6.42%	7.65%	4.50%	7.15%	7.40%	8.48%	5.97%	6.12%	6.70%	5.24%	5.03%	6.42%
2023	4.57%	0.52%	5.09%	0.50%	5.59%	7.42%	3.65%	6.40%	5.94%	6.71%	4.09%	6.34%	5.84%	4.80%	4.79%	5.59%
Dec 2022	5.31%	0.69%	6.00%	1.09%	7.09%	8.93%	4.30%	8.91%	5.89%	9.30%	5.50%	7.53%	7.82%	6.41%	7.38%	7.09%
Nov 2022	4.46%	0.55%	5.01%	0.59%	5.59%	6.98%	3.74%	7.18%	5.03%	6.96%	4.18%	6.68%	6.50%	5.21%	3.67%	5.59%
Oct 2022	4.60%	0.60%	5.19%	0.68%	5.87%	6.36%	4.52%	6.69%	5.32%	7.44%	5.08%	6.92%	6.59%	5.55%	4.15%	5.87%
Sep 2022	4.64%	0.51%	5.15%	0.64%	5.80%	7.30%	3.29%	7.14%	4.68%	7.38%	5.40%	7.45%	6.24%	5.74%	4.41%	5.80%
Aug 2022	4.61%	0.50%	5.11%	0.81%	5.93%	7.27%	3.95%	7.80%	5.42%	6.90%	5.36%	7.61%	7.22%	4.89%	4.34%	5.93%
Jul 2022	4.85%	0.46%	5.31%	2.03%	7.34%	8.81%	5.25%	9.19%	7.04%	8.12%	7.07%	9.69%	8.72%	5.55%	5.39%	7.34%
Jun 2022	4.46%	0.54%	5.01%	1.80%	6.81%	8.19%	5.03%	8.63%	4.63%	7.25%	5.33%	8.50%	8.76%	6.14%	6.87%	6.81%
May 2022	4.07%	0.45%	4.52%	0.91%	5.44%	6.42%	4.15%	7.10%	4.78%	6.02%	4.46%	5.50%	6.47%	5.05%	4.72%	5.44%
Apr 2022	4.15%	0.47%	4.61%	2.56%	7.17%	7.10%	5.05%	8.99%	8.15%	7.19%	5.90%	7.28%	9.21%	6.36%	6.81%	7.17%
Mar 2022	4.50%	0.51%	5.01%	4.19%	9.20%	10.34%	7.06%	11.77%	7.05%	10.91%	6.52%	11.33%	10.97%	8.03%	8.88%	9.20%
Feb 2022	3.81%	0.43%	4.24%	2.68%	6.92%	8.69%	4.12%	9.35%	6.97%	7.69%	5.83%	7.97%	8.47%	5.07%	6.51%	6.92%
Jan 2022	3.88%	0.33%	4.21%	5.36%	9.56%	11.06%	6.65%	12.72%	9.26%	9.88%	7.50%	9.27%	11.60%	8.55%	9.72%	9.56%
2022	4.44%	0.50%	4.95%	1.94%	6.89%	8.12%	4.75%	8.80%	6.19%	7.92%	5.64%	7.97%	8.24%	6.05%	6.09%	6.89%
Dec 2021	4.33%	0.43%	4.76%	2.90%	7.66%	9.28%	5.22%	9.26%	6.08%	9.06%	6.07%	7.79%	8.98%	7.31%	8.70%	7.66%
Nov 2021	4.53%	0.57%	5.10%	2.23%	7.33%	8.89%	5.66%	7.58%	5.43%	8.40%	5.89%	7.27%	9.30%	7.72%	7.51%	7.33%
Oct 2021	4.32%	0.49%	4.82%	1.15%	5.97%	7.71%	3.81%	7.04%	4.84%	7.45%	5.08%	7.09%	6.65%	5.46%	5.63%	5.97%
Sep 2021	4.08%	0.41%	4.49%	1.02%	5.52%	8.25%	3.58%	8.29%	4.21%	6.59%	3.72%	6.40%	6.27%	5.10%	4.38%	5.52%
Aug 2021	4.33%	0.40%	4.73%	0.94%	5.67%	8.23%	5.06%	7.17%	4.14%	6.34%	4.29%	6.34%	6.96%	4.55%	4.58%	5.67%
Jul 2021	3.66%	0.40%	4.06%	0.68%	4.75%	6.38%	2.58%	7.24%	3.52%	5.63%	3.78%	5.47%	6.08%	4.27%	3.82%	4.75%
Jun 2021	3.44%	0.39%	3.83%	0.47%	4.30%	5.30%	1.51%	6.27%	4.05%	4.97%	3.90%	5.25%	6.10%	4.33%	3.16%	4.30%
May 2021	2.88%	0.32%	3.19%	0.55%	3.75%	4.57%	1.24%	4.91%	2.88%	4.65%	3.70%	4.06%	5.80%	4.00%	3.98%	3.75%
Apr 2021	3.04%	0.33%	3.37%	0.61%	3.98%	4.43%	2.68%	5.07%	3.29%	4.13%	3.43%	4.62%	6.36%	3.70%	2.90%	3.98%
Mar 2021	3.21%	0.41%	3.62%	0.92%	4.53%	5.35%	2.90%	6.31%	4.19%	4.63%	4.04%	5.26%	5.50%	4.01%	4.28%	4.53%
Feb 2021	3.45%	0.40%	3.84%	1.56%	5.41%	6.15%	3.66%	6.69%	4.56%	5.28%	4.55%	6.57%	6.76%	5.70%	5.14%	5.41%
Jan 2021	3.73%	0.23%	3.96%	3.80%	7.76%	9.00%	4.58%	10.47%	5.72%	9.16%	10.21%	8.23%	8.51%	6.82%	7.55%	7.76%
2021	3.75%	0.40%	4.15%	1.41%	5.56%	6.96%	3.54%	7.19%	4.57%	6.35%	4.89%	6.18%	6.93%	5.24%	4.85%	5.56%

Total Absence Rate



Total Absence Rate



% of Absence Non Covid-19 / Covid-19

