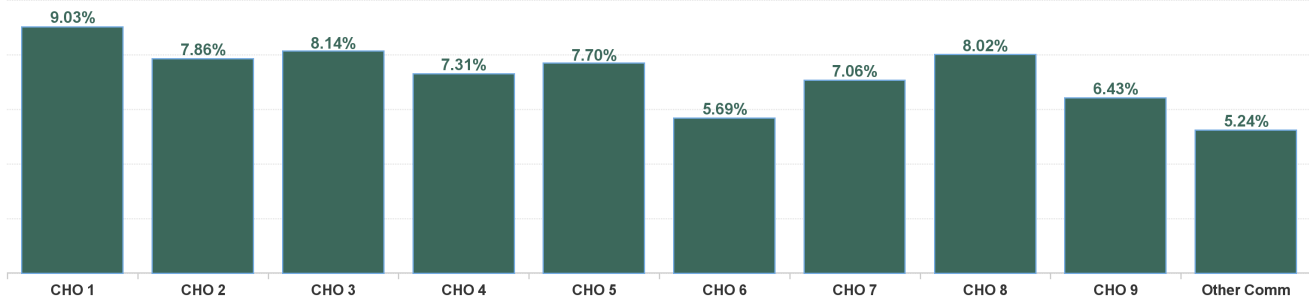


## July 2024

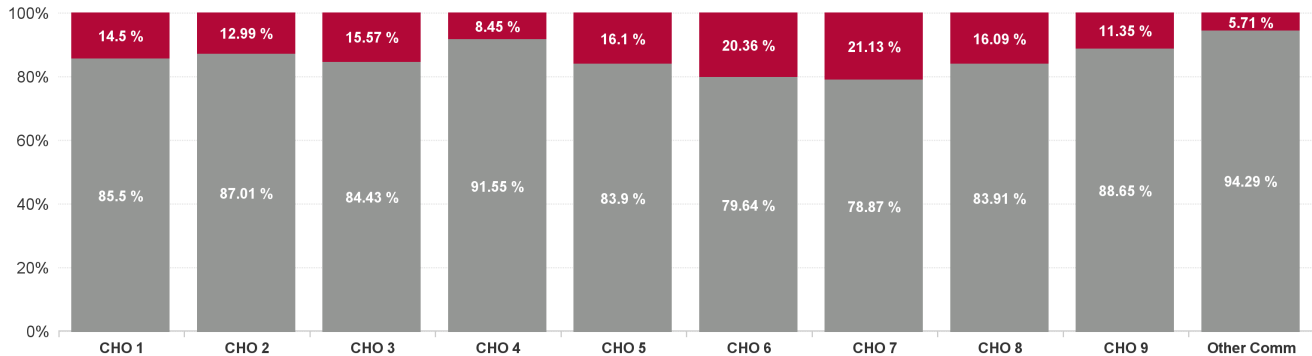
Health Service Absence Rate - by Staff Category: Jul 2024	Certified absence	Self-certified absence	Non Covid-19 absence	Covid-19 Absence	Total absence rate	% Non Covid-19 absence	% Covid-19 absence
<b>Mental Health</b>	<b>5.84%</b>	<b>0.51%</b>	<b>6.35%</b>	<b>1.04%</b>	<b>7.39%</b>	<b>85.94%</b>	<b>14.06%</b>
Medical & Dental	2.17%	0.14%	2.31%	0.32%	2.63%	87.76%	12.24%
Nursing & Midwifery	6.24%	0.62%	6.86%	1.22%	8.08%	84.88%	15.12%
Health & Social Care Professionals	5.27%	0.35%	5.62%	0.81%	6.44%	87.37%	12.63%
Management & Administrative	5.92%	0.47%	6.39%	1.07%	7.45%	85.67%	14.33%
General Support	7.67%	0.60%	8.27%	0.88%	9.15%	90.39%	9.61%
Patient & Client Care	7.13%	0.61%	7.74%	1.28%	9.01%	85.83%	14.17%

Health Service Absence Rate - by Hospital Group: Jul 2024	Certified absence	Self-certified absence	Non Covid-19 absence	Covid-19 Absence	Total absence rate	% Non Covid-19 absence	% Covid-19 absence
<b>Mental Health</b>	<b>5.84%</b>	<b>0.51%</b>	<b>6.35%</b>	<b>1.04%</b>	<b>7.39%</b>	<b>85.94%</b>	<b>14.06%</b>
CHO 1	7.23%	0.49%	7.72%	1.31%	9.03%	85.50%	14.50%
CHO 2	6.42%	0.42%	6.84%	1.02%	7.86%	87.01%	12.99%
CHO 3	6.29%	0.58%	6.87%	1.27%	8.14%	84.43%	15.57%
CHO 4	6.26%	0.43%	6.69%	0.62%	7.31%	91.55%	8.45%
CHO 5	6.03%	0.43%	6.46%	1.24%	7.70%	83.90%	16.10%
CHO 6	3.98%	0.55%	4.53%	1.16%	5.69%	79.64%	20.36%
CHO 7	5.10%	0.47%	5.57%	1.49%	7.06%	78.87%	21.13%
CHO 8	6.20%	0.53%	6.73%	1.29%	8.02%	83.91%	16.09%
CHO 9	5.12%	0.58%	5.70%	0.73%	6.43%	88.65%	11.35%
Other Community Services	4.05%	0.90%	4.94%	0.30%	5.24%	94.29%	5.71%

Total Absence Rate



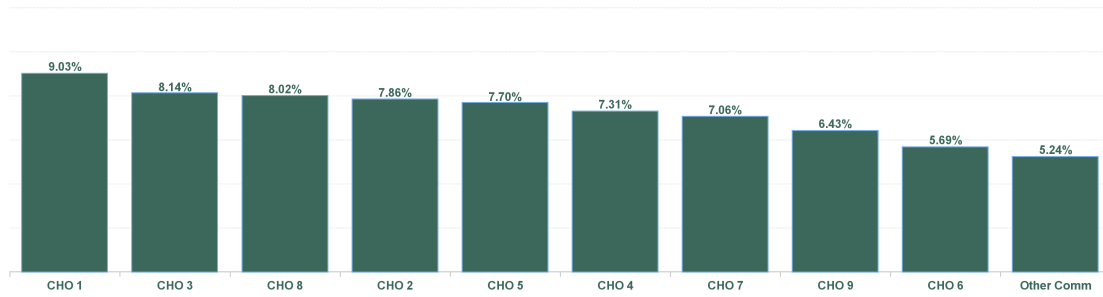
% of Absence Non Covid-19 / Covid-19



July 2024

Health Service Absence Rate - by HG, CHO/Care Group & Staff Category : Jul 2024	Certified absence	Self-certified absence	Non Covid-19 absence	Covid-19 Absence	Total absence rate	Medical & Dental	Nursing & Midwifery	Health & Social Care Professionals	Management & Administrative	General Support	Patient & Client Care
<b>Mental Health</b>	<b>5.84%</b>	<b>0.51%</b>	<b>6.35%</b>	<b>1.04%</b>	<b>7.39%</b>						
CHO 1	7.23%	0.49%	7.72%	1.31%	9.03%	1.00%	9.51%	8.23%	9.01%	15.93%	11.50%
CHO 2	6.42%	0.42%	6.84%	1.02%	7.86%	1.79%	8.50%	7.79%	6.97%	8.44%	10.02%
CHO 3	6.29%	0.58%	6.87%	1.27%	8.14%	1.68%	8.76%	4.54%	13.51%	6.93%	12.49%
CHO 4	6.26%	0.43%	6.69%	0.62%	7.31%	2.91%	8.29%	7.25%	4.05%	11.97%	8.76%
CHO 5	6.03%	0.43%	6.46%	1.24%	7.70%	5.97%	8.85%	5.27%	7.35%	6.11%	8.49%
CHO 6	3.98%	0.55%	4.53%	1.16%	5.69%	1.24%	7.32%	5.27%	7.03%	12.46%	2.96%
CHO 7	5.10%	0.47%	5.57%	1.49%	7.06%	2.84%	7.16%	6.02%	8.22%	5.34%	12.07%
CHO 8	6.20%	0.53%	6.73%	1.29%	8.02%	2.37%	8.41%	7.51%	7.62%	13.72%	9.41%
CHO 9	5.12%	0.58%	5.70%	0.73%	6.43%	3.90%	6.15%	5.59%	9.93%	6.89%	7.45%
Other Community Services	4.05%	0.90%	4.94%	0.30%	5.24%	0.77%	6.81%	6.29%	3.43%	8.22%	3.87%

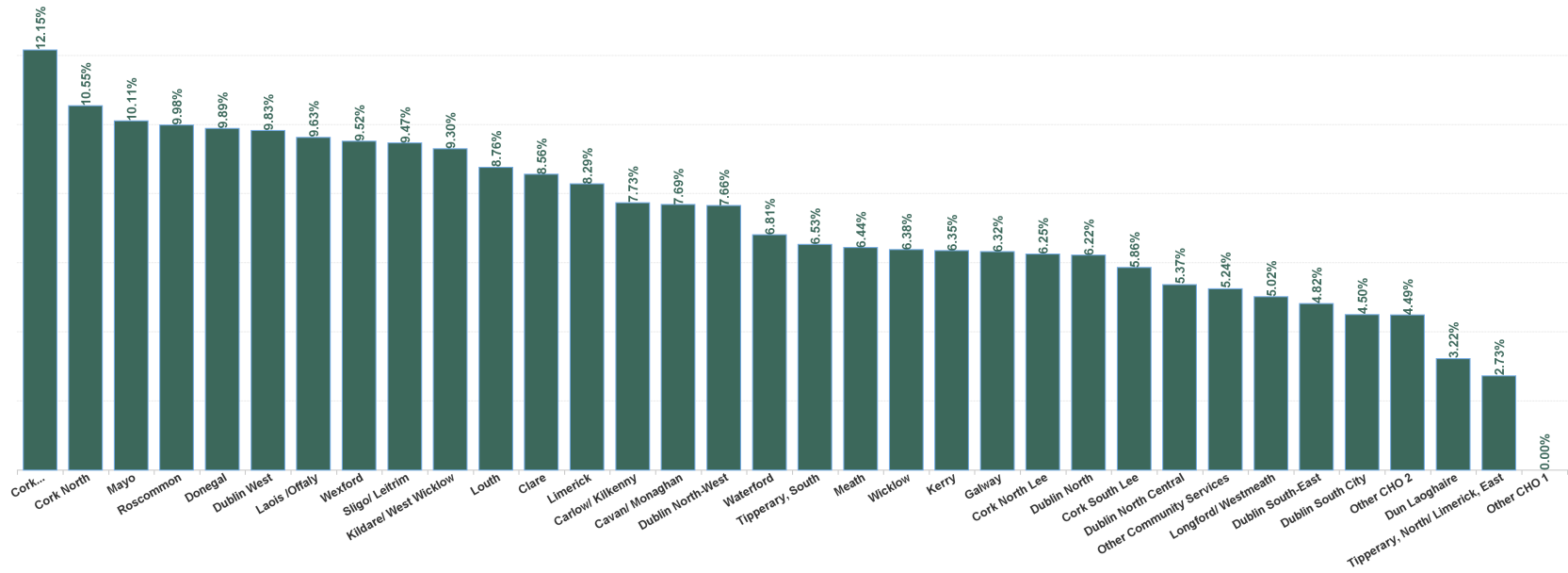
Total Absence Rate



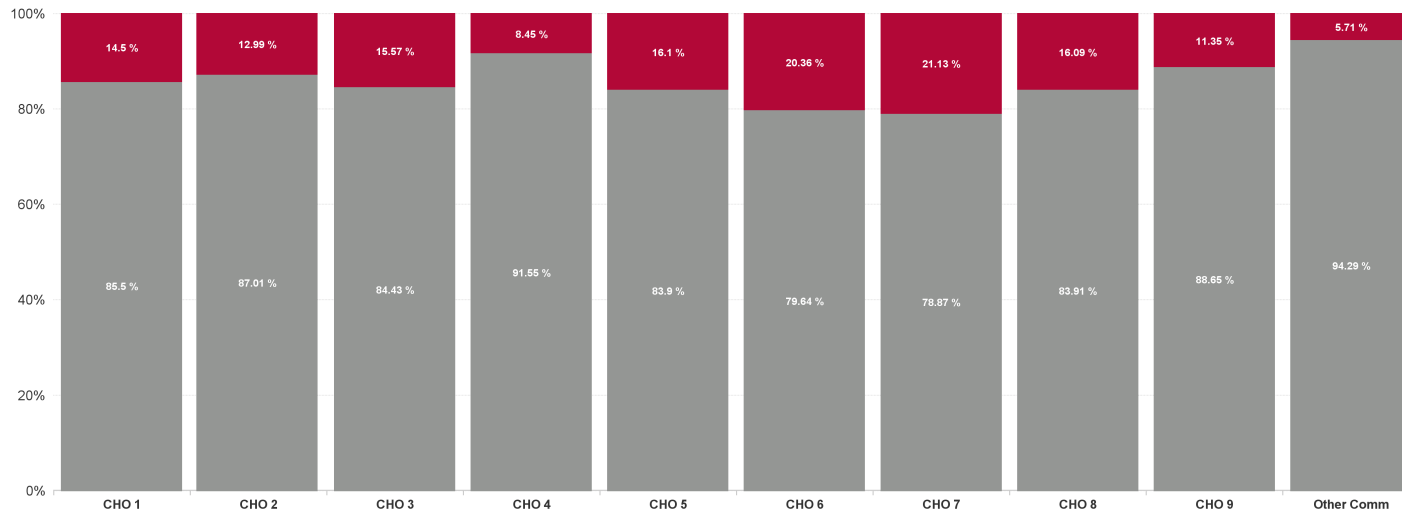
July 2024

Health Service Absence Rate - by HG, CHO/Care Group & Staff Category: Jul 2024	Certified absence	Self-certified absence	Non Covid-19 absence	Covid-19 Absence	Total absence rate	Medical & Dental	Nursing & Midwifery	Health & Social Care Professionals	Management & Administrative	General Support	Patient & Client Care
<b>Total</b>	5.84%	0.51%	6.35%	1.04%	7.39%	2.63%	8.08%	6.44%	7.45%	9.15%	9.01%
Cavan/ Monaghan	6.12%	0.51%	6.63%	1.06%	7.69%	1.79%	8.26%	8.37%	5.41%	20.41%	9.90%
Donegal	8.28%	0.44%	8.72%	1.17%	9.89%	0.31%	10.54%	8.90%	7.66%	24.05%	8.37%
Other CHO 1	0.00%	0.00%	0.00%	0.00%	0.00%				0.00%		
Sligo/ Leitrim	7.23%	0.52%	7.75%	1.72%	9.47%	0.72%	9.42%	7.17%	15.19%	10.19%	20.94%
<b>CHO 1</b>	<b>7.23%</b>	<b>0.49%</b>	<b>7.72%</b>	<b>1.31%</b>	<b>9.03%</b>	<b>1.00%</b>	<b>9.51%</b>	<b>8.23%</b>	<b>9.01%</b>	<b>15.93%</b>	<b>11.50%</b>
Galway	4.91%	0.38%	5.29%	1.03%	6.32%	1.63%	5.82%	5.58%	6.23%	9.62%	9.94%
Mayo	9.00%	0.42%	9.42%	0.69%	10.11%	2.83%	11.64%	14.21%	7.25%	0.86%	11.06%
Other CHO 2	3.77%	0.43%	4.20%	0.29%	4.49%			6.55%	0.81%		
Roscommon	7.53%	0.62%	8.15%	1.83%	9.98%	0.00%	11.71%	9.97%	10.97%	14.83%	8.28%
<b>CHO 2</b>	<b>6.42%</b>	<b>0.42%</b>	<b>6.84%</b>	<b>1.02%</b>	<b>7.86%</b>	<b>1.79%</b>	<b>8.50%</b>	<b>7.79%</b>	<b>6.97%</b>	<b>8.44%</b>	<b>10.02%</b>
Clare	5.44%	0.66%	6.10%	2.47%	8.56%	6.37%	9.75%	2.88%	14.89%	4.16%	6.55%
Limerick	7.03%	0.55%	7.58%	0.70%	8.29%	0.81%	8.58%	4.90%	13.68%	7.95%	18.63%
Tipperary, North/ Limerick, East	0.69%	0.46%	1.15%	1.59%	2.73%	0.72%	3.04%	1.63%	6.43%		
<b>CHO 3</b>	<b>6.29%</b>	<b>0.58%</b>	<b>6.87%</b>	<b>1.27%</b>	<b>8.14%</b>	<b>1.68%</b>	<b>8.76%</b>	<b>4.54%</b>	<b>13.51%</b>	<b>6.93%</b>	<b>12.49%</b>
Cork North	9.26%	0.52%	9.78%	0.76%	10.55%	9.43%	11.49%	13.84%	5.83%	12.39%	8.32%
Cork North Lee	5.11%	0.50%	5.61%	0.64%	6.25%	2.37%	8.09%	5.59%	3.89%	0.00%	8.40%
Cork South Lee	4.97%	0.30%	5.27%	0.59%	5.86%	1.95%	7.87%	6.17%	1.55%	3.56%	7.92%
Cork West	11.20%	0.37%	11.57%	0.58%	12.15%	0.00%	15.86%	6.87%	17.94%		9.13%
Kerry	5.44%	0.41%	5.84%	0.51%	6.35%	1.84%	5.26%	10.18%	2.86%	12.96%	9.88%
<b>CHO 4</b>	<b>6.26%</b>	<b>0.43%</b>	<b>6.69%</b>	<b>0.62%</b>	<b>7.31%</b>	<b>2.91%</b>	<b>8.29%</b>	<b>7.25%</b>	<b>4.05%</b>	<b>11.97%</b>	<b>8.76%</b>
Carlow/ Kilkenny	5.48%	0.41%	5.89%	1.84%	7.73%	2.95%	9.41%	4.09%	8.81%	4.79%	9.46%
Tipperary, South	5.47%	0.39%	5.87%	0.66%	6.53%	8.81%	7.06%	2.77%	5.96%	6.36%	5.49%
Waterford	5.59%	0.44%	6.03%	0.78%	6.81%	3.82%	7.64%	7.94%	4.18%	4.70%	11.19%
Wexford	7.78%	0.46%	8.24%	1.27%	9.52%	10.89%	10.82%	5.47%	8.82%	13.30%	7.58%
<b>CHO 5</b>	<b>6.03%</b>	<b>0.43%</b>	<b>6.46%</b>	<b>1.24%</b>	<b>7.70%</b>	<b>5.97%</b>	<b>8.85%</b>	<b>5.27%</b>	<b>7.35%</b>	<b>6.11%</b>	<b>8.49%</b>
Dublin South-East	3.72%	0.45%	4.17%	0.65%	4.82%	1.30%	4.11%	9.17%	3.61%	15.02%	3.87%
Dun Laoghaire	0.00%	0.54%	0.54%	2.69%	3.22%			3.22%			
Wicklow	4.26%	0.63%	4.89%	1.49%	6.38%	1.23%	11.53%	4.11%	8.17%	11.38%	1.12%
<b>CHO 6</b>	<b>3.98%</b>	<b>0.55%</b>	<b>4.53%</b>	<b>1.16%</b>	<b>5.69%</b>	<b>1.24%</b>	<b>7.32%</b>	<b>5.27%</b>	<b>7.03%</b>	<b>12.46%</b>	<b>2.96%</b>
Dublin South City	3.09%	0.38%	3.47%	1.03%	4.50%	2.52%	4.30%	5.25%	9.02%	6.25%	3.88%
Dublin West	6.53%	0.75%	7.28%	2.55%	9.83%	1.98%	9.85%	8.30%	10.90%	0.00%	13.73%
Kildare/ West Wicklow	7.85%	0.31%	8.17%	1.14%	9.30%	4.62%	12.37%	3.98%	1.47%	0.00%	13.78%
<b>CHO 7</b>	<b>5.10%</b>	<b>0.47%</b>	<b>5.57%</b>	<b>1.49%</b>	<b>7.06%</b>	<b>2.84%</b>	<b>7.16%</b>	<b>6.02%</b>	<b>8.22%</b>	<b>5.34%</b>	<b>12.07%</b>
Laois /Offaly	7.51%	0.52%	8.02%	1.61%	9.63%	4.21%	7.72%	14.56%	7.48%	10.77%	13.80%
Longford/ Westmeath	3.21%	0.57%	3.78%	1.24%	5.02%	3.12%	5.17%	2.48%	8.20%	11.37%	1.61%
Louth	7.11%	0.52%	7.63%	1.13%	8.76%	0.71%	10.36%	5.67%	7.39%	18.18%	9.93%
Meath	5.24%	0.33%	5.57%	0.87%	6.44%	3.81%	20.76%	0.71%	8.05%		
<b>CHO 8</b>	<b>6.20%</b>	<b>0.53%</b>	<b>6.73%</b>	<b>1.29%</b>	<b>8.02%</b>	<b>2.37%</b>	<b>8.41%</b>	<b>7.51%</b>	<b>7.62%</b>	<b>13.72%</b>	<b>9.41%</b>
Dublin North	4.72%	0.71%	5.43%	0.80%	6.22%	6.96%	6.24%	10.64%	7.11%	3.44%	4.77%
Dublin North Central	4.10%	0.53%	4.63%	0.74%	5.37%	1.67%	4.76%	3.55%	12.85%	6.69%	10.60%
Dublin North-West	6.53%	0.48%	7.01%	0.65%	7.66%	5.07%	7.11%	4.60%	9.48%	12.71%	11.01%
<b>CHO 9</b>	<b>5.12%</b>	<b>0.58%</b>	<b>5.70%</b>	<b>0.73%</b>	<b>6.43%</b>	<b>3.90%</b>	<b>6.15%</b>	<b>5.59%</b>	<b>9.93%</b>	<b>6.89%</b>	<b>7.45%</b>
Other Community Services	4.05%	0.90%	4.94%	0.30%	5.24%	0.77%	6.81%	6.29%	3.43%	8.22%	3.87%
<b>Other Community Services</b>	<b>4.05%</b>	<b>0.90%</b>	<b>4.94%</b>	<b>0.30%</b>	<b>5.24%</b>	<b>0.77%</b>	<b>6.81%</b>	<b>6.29%</b>	<b>3.43%</b>	<b>8.22%</b>	<b>3.87%</b>
<b>Community Services</b>	<b>5.84%</b>	<b>0.51%</b>	<b>6.35%</b>	<b>1.04%</b>	<b>7.39%</b>	<b>2.63%</b>	<b>8.08%</b>	<b>6.44%</b>	<b>7.45%</b>	<b>9.15%</b>	<b>9.01%</b>

Total Absence Rate



% of Absence Non Covid-19 / Covid-19



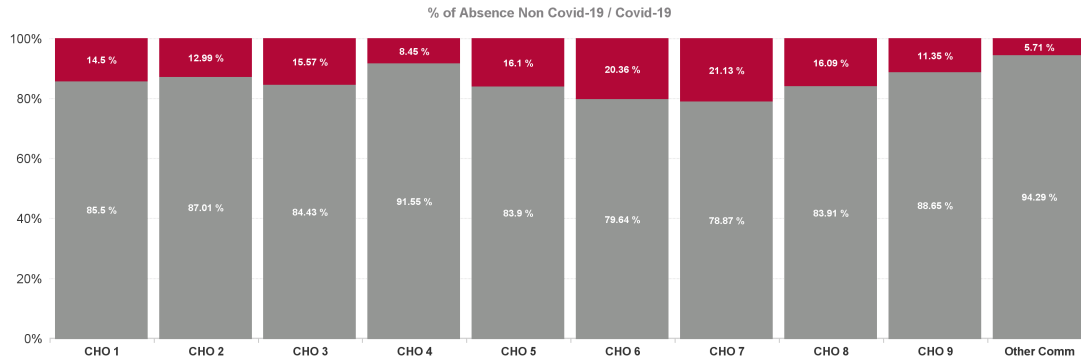
## July 2024

Health Service Covid 19 Absence Rate - by Hospital & Staff Category: Jul 2024	Non Covid-19 absence	Covid-19 absence	Total absence rate	Medical & Dental	Nursing & Midwifery	Health & Social Care Professionals	Management & Administrative	General Support	Patient & Client Care
<b>Mental Health</b>	<b>6.35%</b>	<b>1.04%</b>	<b>7.39%</b>	<b>0.32%</b>	<b>1.22%</b>	<b>0.81%</b>	<b>1.07%</b>	<b>0.88%</b>	<b>1.28%</b>
Cavan/ Monaghan	6.63%	1.06%	7.69%	0.89%	1.36%	1.03%	0.72%	0.00%	0.79%
Donegal	8.72%	1.17%	9.89%	0.31%	1.36%	0.73%	1.73%	1.49%	0.28%
Other CHO 1	0.00%	0.00%	0.00%				0.00%		
Sligo/ Leitrim	7.75%	1.72%	9.47%	0.00%	2.26%	1.36%	1.64%	2.13%	0.00%
<b>CHO 1</b>	<b>7.72%</b>	<b>1.31%</b>	<b>9.03%</b>	<b>0.42%</b>	<b>1.64%</b>	<b>1.00%</b>	<b>1.30%</b>	<b>1.66%</b>	<b>0.54%</b>
Galway	5.29%	1.03%	6.32%	0.00%	1.23%	0.53%	1.30%	1.46%	1.31%
Mayo	9.42%	0.69%	10.11%	0.00%	0.67%	1.31%	0.39%	0.00%	1.09%
Other CHO 2	4.20%	0.29%	4.49%			0.00%	0.81%		
Roscommon	8.15%	1.83%	9.98%	0.00%	3.18%	0.00%	0.89%	0.00%	1.40%
<b>CHO 2</b>	<b>6.84%</b>	<b>1.02%</b>	<b>7.86%</b>	<b>0.00%</b>	<b>1.29%</b>	<b>0.59%</b>	<b>0.95%</b>	<b>0.88%</b>	<b>1.26%</b>
Clare	6.10%	2.47%	8.56%	2.59%	2.84%	0.00%	1.97%	1.82%	2.46%
Limerick	7.58%	0.70%	8.29%	0.63%	0.61%	0.55%	1.77%	0.47%	0.67%
Tipperary, North/ Limerick, East	1.15%	1.59%	2.73%	0.00%	2.41%	0.00%	3.21%		
<b>CHO 3</b>	<b>6.87%</b>	<b>1.27%</b>	<b>8.14%</b>	<b>0.88%</b>	<b>1.49%</b>	<b>0.47%</b>	<b>1.91%</b>	<b>0.83%</b>	<b>1.58%</b>
Cork North	9.78%	0.76%	10.55%	0.00%	0.88%	0.00%	0.78%	0.20%	1.28%
Cork North Lee	5.61%	0.64%	6.25%	0.00%	0.62%	0.67%	0.16%	0.00%	2.31%
Cork South Lee	5.27%	0.59%	5.86%	0.00%	1.04%	0.44%	0.00%	0.00%	0.00%
Cork West	11.57%	0.58%	12.15%	0.00%	0.42%	0.57%	0.00%		1.59%
Kerry	5.84%	0.51%	6.35%	0.00%	0.44%	0.38%	0.50%	1.91%	0.37%
<b>CHO 4</b>	<b>6.69%</b>	<b>0.62%</b>	<b>7.31%</b>	<b>0.00%</b>	<b>0.69%</b>	<b>0.50%</b>	<b>0.27%</b>	<b>1.06%</b>	<b>1.24%</b>
Carlow/ Kilkenny	5.89%	1.84%	7.73%	1.89%	2.18%	2.13%	1.89%	0.40%	2.45%
Tipperary, South	5.87%	0.66%	6.53%	0.31%	0.64%	0.92%	0.00%	0.10%	4.26%
Waterford	6.03%	0.78%	6.81%	0.80%	0.55%	2.80%	0.53%	0.00%	1.52%
Wexford	8.24%	1.27%	9.52%	0.00%	1.90%	1.06%	0.53%	0.00%	1.30%
<b>CHO 5</b>	<b>6.46%</b>	<b>1.24%</b>	<b>7.70%</b>	<b>0.85%</b>	<b>1.43%</b>	<b>1.75%</b>	<b>0.91%</b>	<b>0.19%</b>	<b>2.15%</b>
Dublin South-East	4.17%	0.65%	4.82%	0.00%	0.74%	1.00%	1.50%	0.00%	0.29%
Dun Laoghaire	0.54%	2.69%	3.22%			2.69%			
Wicklow	4.89%	1.49%	6.38%	0.00%	3.59%	1.29%	0.60%	0.00%	0.84%
<b>CHO 6</b>	<b>4.53%</b>	<b>1.16%</b>	<b>5.69%</b>	<b>0.00%</b>	<b>1.97%</b>	<b>1.31%</b>	<b>0.82%</b>	<b>0.00%</b>	<b>0.47%</b>
Dublin South City	3.47%	1.03%	4.50%	0.35%	1.23%	1.13%	1.17%	1.79%	0.00%
Dublin West	7.28%	2.55%	9.83%	1.32%	1.16%	0.00%	1.47%	0.00%	5.49%
Kildare/ West Wicklow	8.17%	1.14%	9.30%	0.47%	1.69%	0.00%	0.88%	0.00%	0.52%
<b>CHO 7</b>	<b>5.57%</b>	<b>1.49%</b>	<b>7.06%</b>	<b>0.65%</b>	<b>1.34%</b>	<b>0.59%</b>	<b>1.23%</b>	<b>1.53%</b>	<b>4.01%</b>
Laois /Offaly	8.02%	1.61%	9.63%	0.52%	2.04%	0.95%	0.83%	3.82%	1.58%
Longford/ Westmeath	3.78%	1.24%	5.02%	0.00%	1.20%	1.03%	4.17%	1.75%	0.00%
Louth	7.63%	1.13%	8.76%	0.20%	1.47%	0.42%	1.17%	2.02%	0.69%
Meath	5.57%	0.87%	6.44%	3.81%	0.00%	0.00%	0.00%		
<b>CHO 8</b>	<b>6.73%</b>	<b>1.29%</b>	<b>8.02%</b>	<b>0.47%</b>	<b>1.53%</b>	<b>0.65%</b>	<b>1.71%</b>	<b>2.37%</b>	<b>0.89%</b>
Dublin North	5.43%	0.80%	6.22%	0.00%	0.85%	1.26%	2.21%	0.50%	0.20%
Dublin North Central	4.63%	0.74%	5.37%	0.38%	0.79%	0.77%	1.91%	0.00%	0.00%

Dublin North-West	7.01%	0.65%	7.66%	0.00%	0.56%	0.67%	1.19%	2.32%	0.00%
<b>CHO 9</b>	<b>5.70%</b>	<b>0.73%</b>	<b>6.43%</b>	<b>0.18%</b>	<b>0.73%</b>	<b>0.86%</b>	<b>1.73%</b>	<b>0.79%</b>	<b>0.11%</b>
Other Community Services	4.94%	0.30%	5.24%	0.00%	0.38%	0.85%	0.12%	1.23%	0.00%
<b>Other Community Services</b>	<b>4.94%</b>	<b>0.30%</b>	<b>5.24%</b>	<b>0.00%</b>	<b>0.38%</b>	<b>0.85%</b>	<b>0.12%</b>	<b>1.23%</b>	<b>0.00%</b>
<b>Community Services</b>	<b>6.35%</b>	<b>1.04%</b>	<b>7.39%</b>	<b>0.32%</b>	<b>1.22%</b>	<b>0.81%</b>	<b>1.07%</b>	<b>0.88%</b>	<b>1.28%</b>

July 2024

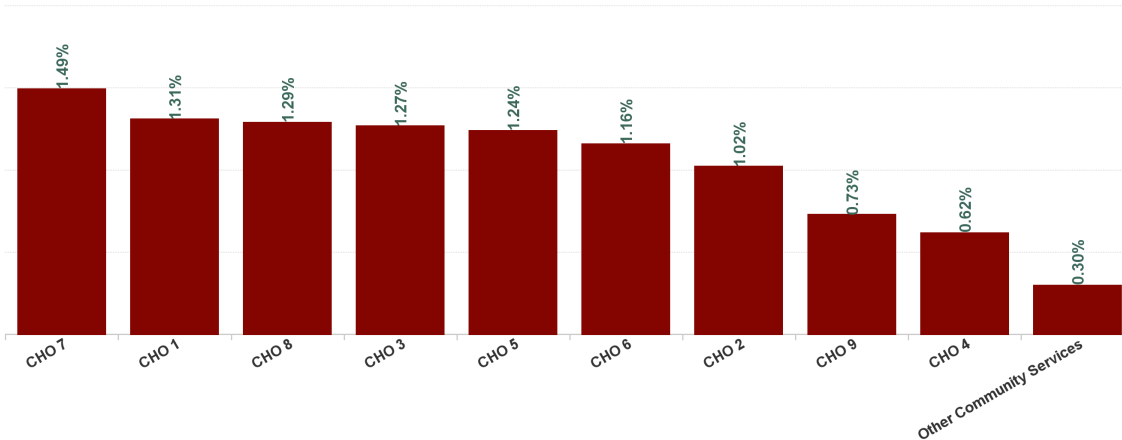
Health Service Absence Rate - by HG, CHO/Care Group & Staff Category: Jul 2024	Certified absence	Self-certified absence	Non Covid-19 absence	Covid-19 Absence	Total absence rate	Medical & Dental	Nursing & Midwifery	Health & Social Care Professionals	Management & Administrative	General Support	Patient & Client Care
<b>Total</b>	5.84%	0.51%	6.35%	1.04%	7.39%	2.63%	8.08%	6.44%	7.45%	9.15%	9.01%
Health Service Executive	7.23%	0.49%	7.72%	1.31%	9.03%	1.00%	9.51%	8.23%	9.01%	15.93%	11.50%
<b>CHO 1</b>	<b>7.23%</b>	<b>0.49%</b>	<b>7.72%</b>	<b>1.31%</b>	<b>9.03%</b>	<b>1.00%</b>	<b>9.51%</b>	<b>8.23%</b>	<b>9.01%</b>	<b>15.93%</b>	<b>11.50%</b>
Health Service Executive	6.42%	0.42%	6.84%	1.02%	7.86%	1.79%	8.50%	7.79%	6.97%	8.44%	10.02%
<b>CHO 2</b>	<b>6.42%</b>	<b>0.42%</b>	<b>6.84%</b>	<b>1.02%</b>	<b>7.86%</b>	<b>1.79%</b>	<b>8.50%</b>	<b>7.79%</b>	<b>6.97%</b>	<b>8.44%</b>	<b>10.02%</b>
Health Service Executive	6.29%	0.58%	6.87%	1.27%	8.14%	1.68%	8.76%	4.54%	13.51%	6.93%	12.49%
<b>CHO 3</b>	<b>6.29%</b>	<b>0.58%</b>	<b>6.87%</b>	<b>1.27%</b>	<b>8.14%</b>	<b>1.68%</b>	<b>8.76%</b>	<b>4.54%</b>	<b>13.51%</b>	<b>6.93%</b>	<b>12.49%</b>
Health Service Executive	6.26%	0.43%	6.69%	0.62%	7.31%	2.91%	8.29%	7.25%	4.05%	11.97%	8.76%
<b>CHO 4</b>	<b>6.26%</b>	<b>0.43%</b>	<b>6.69%</b>	<b>0.62%</b>	<b>7.31%</b>	<b>2.91%</b>	<b>8.29%</b>	<b>7.25%</b>	<b>4.05%</b>	<b>11.97%</b>	<b>8.76%</b>
Health Service Executive	6.03%	0.43%	6.46%	1.24%	7.70%	5.97%	8.85%	5.27%	7.35%	6.11%	8.49%
<b>CHO 5</b>	<b>6.03%</b>	<b>0.43%</b>	<b>6.46%</b>	<b>1.24%</b>	<b>7.70%</b>	<b>5.97%</b>	<b>8.85%</b>	<b>5.27%</b>	<b>7.35%</b>	<b>6.11%</b>	<b>8.49%</b>
Health Service Executive	4.27%	0.49%	4.77%	1.16%	5.93%	0.67%	6.42%	9.18%	2.82%	14.08%	3.24%
Section 38 Voluntary Agencies	3.49%	0.65%	4.14%	1.16%	5.30%	1.60%	10.40%	2.67%	10.13%	6.40%	0.00%
<b>CHO 6</b>	<b>3.98%</b>	<b>0.55%</b>	<b>4.53%</b>	<b>1.16%</b>	<b>5.69%</b>	<b>1.24%</b>	<b>7.32%</b>	<b>5.27%</b>	<b>7.03%</b>	<b>12.46%</b>	<b>2.96%</b>
Health Service Executive	5.10%	0.47%	5.57%	1.49%	7.06%	2.84%	7.16%	6.02%	8.22%	5.34%	12.07%
<b>CHO 7</b>	<b>5.10%</b>	<b>0.47%</b>	<b>5.57%</b>	<b>1.49%</b>	<b>7.06%</b>	<b>2.84%</b>	<b>7.16%</b>	<b>6.02%</b>	<b>8.22%</b>	<b>5.34%</b>	<b>12.07%</b>
Health Service Executive	6.20%	0.53%	6.73%	1.29%	8.02%	2.37%	8.41%	7.51%	7.62%	13.72%	9.41%
<b>CHO 8</b>	<b>6.20%</b>	<b>0.53%</b>	<b>6.73%</b>	<b>1.29%</b>	<b>8.02%</b>	<b>2.37%</b>	<b>8.41%</b>	<b>7.51%</b>	<b>7.62%</b>	<b>13.72%</b>	<b>9.41%</b>
Health Service Executive	5.54%	0.57%	6.11%	0.68%	6.79%	3.96%	6.71%	5.75%	11.14%	6.65%	7.78%
Section 38 Voluntary Agencies	1.87%	0.66%	2.52%	1.13%	3.66%	0.00%	2.40%	0.00%	4.55%	7.43%	0.00%
<b>CHO 9</b>	<b>5.12%</b>	<b>0.58%</b>	<b>5.70%</b>	<b>0.73%</b>	<b>6.43%</b>	<b>3.90%</b>	<b>6.15%</b>	<b>5.59%</b>	<b>9.93%</b>	<b>6.89%</b>	<b>7.45%</b>
Health Service Executive	4.05%	0.90%	4.94%	0.30%	5.24%	0.77%	6.81%	6.29%	3.43%	8.22%	3.87%
<b>Other Community Services</b>	<b>4.05%</b>	<b>0.90%</b>	<b>4.94%</b>	<b>0.30%</b>	<b>5.24%</b>	<b>0.77%</b>	<b>6.81%</b>	<b>6.29%</b>	<b>3.43%</b>	<b>8.22%</b>	<b>3.87%</b>
<b>Community Services</b>	<b>5.84%</b>	<b>0.51%</b>	<b>6.35%</b>	<b>1.04%</b>	<b>7.39%</b>	<b>2.63%</b>	<b>8.08%</b>	<b>6.44%</b>	<b>7.45%</b>	<b>9.15%</b>	<b>9.01%</b>



## July 2024

Health Service Covid 19 Absence Rate - by Hospital & Staff Category: Jul 2024	Non Covid-19 absence	Covid-19 Absence	Total absence rate	Medical & Dental	Nursing & Midwifery	Health & Social Care Professionals	Management & Administrative	General Support	Patient & Client Care
<b>Mental Health</b>	6.35%	1.04%	7.39%	0.32%	1.22%	0.81%	1.07%	0.88%	1.28%
Health Service Executive	7.72%	1.31%	9.03%	0.42%	1.64%	1.00%	1.30%	1.66%	0.54%
<b>CHO 1</b>	<b>7.72%</b>	<b>1.31%</b>	<b>9.03%</b>	<b>0.42%</b>	<b>1.64%</b>	<b>1.00%</b>	<b>1.30%</b>	<b>1.66%</b>	<b>0.54%</b>
Health Service Executive	6.84%	1.02%	7.86%	0.00%	1.29%	0.59%	0.95%	0.88%	1.26%
<b>CHO 2</b>	<b>6.84%</b>	<b>1.02%</b>	<b>7.86%</b>	<b>0.00%</b>	<b>1.29%</b>	<b>0.59%</b>	<b>0.95%</b>	<b>0.88%</b>	<b>1.26%</b>
Health Service Executive	6.87%	1.27%	8.14%	0.88%	1.49%	0.47%	1.91%	0.83%	1.58%
<b>CHO 3</b>	<b>6.87%</b>	<b>1.27%</b>	<b>8.14%</b>	<b>0.88%</b>	<b>1.49%</b>	<b>0.47%</b>	<b>1.91%</b>	<b>0.83%</b>	<b>1.58%</b>
Health Service Executive	6.69%	0.62%	7.31%	0.00%	0.69%	0.50%	0.27%	1.06%	1.24%
<b>CHO 4</b>	<b>6.69%</b>	<b>0.62%</b>	<b>7.31%</b>	<b>0.00%</b>	<b>0.69%</b>	<b>0.50%</b>	<b>0.27%</b>	<b>1.06%</b>	<b>1.24%</b>
Health Service Executive	6.46%	1.24%	7.70%	0.85%	1.43%	1.75%	0.91%	0.19%	2.15%
<b>CHO 5</b>	<b>6.46%</b>	<b>1.24%</b>	<b>7.70%</b>	<b>0.85%</b>	<b>1.43%</b>	<b>1.75%</b>	<b>0.91%</b>	<b>0.19%</b>	<b>2.15%</b>
Health Service Executive	4.77%	1.16%	5.93%	0.00%	1.73%	1.42%	0.88%	0.00%	0.51%
Section 38 Voluntary Agencies	4.14%	1.16%	5.30%	0.00%	2.77%	1.23%	0.78%	0.00%	0.00%
<b>CHO 6</b>	<b>4.53%</b>	<b>1.16%</b>	<b>5.69%</b>	<b>0.00%</b>	<b>1.97%</b>	<b>1.31%</b>	<b>0.82%</b>	<b>0.00%</b>	<b>0.47%</b>
Health Service Executive	5.57%	1.49%	7.06%	0.65%	1.34%	0.59%	1.23%	1.53%	4.01%
<b>CHO 7</b>	<b>5.57%</b>	<b>1.49%</b>	<b>7.06%</b>	<b>0.65%</b>	<b>1.34%</b>	<b>0.59%</b>	<b>1.23%</b>	<b>1.53%</b>	<b>4.01%</b>
Health Service Executive	6.73%	1.29%	8.02%	0.47%	1.53%	0.65%	1.71%	2.37%	0.89%
<b>CHO 8</b>	<b>6.73%</b>	<b>1.29%</b>	<b>8.02%</b>	<b>0.47%</b>	<b>1.53%</b>	<b>0.65%</b>	<b>1.71%</b>	<b>2.37%</b>	<b>0.89%</b>
Health Service Executive	6.11%	0.68%	6.79%	0.18%	0.66%	0.88%	1.45%	1.13%	0.12%
Section 38 Voluntary Agencies	2.52%	1.13%	3.66%	0.00%	1.20%	0.00%	2.97%	0.00%	0.00%
<b>CHO 9</b>	<b>5.70%</b>	<b>0.73%</b>	<b>6.43%</b>	<b>0.18%</b>	<b>0.73%</b>	<b>0.86%</b>	<b>1.73%</b>	<b>0.79%</b>	<b>0.11%</b>
Health Service Executive	4.94%	0.30%	5.24%	0.00%	0.38%	0.85%	0.12%	1.23%	0.00%
<b>Other Community Services</b>	<b>4.94%</b>	<b>0.30%</b>	<b>5.24%</b>	<b>0.00%</b>	<b>0.38%</b>	<b>0.85%</b>	<b>0.12%</b>	<b>1.23%</b>	<b>0.00%</b>
<b>Community Services</b>	<b>6.35%</b>	<b>1.04%</b>	<b>7.39%</b>	<b>0.32%</b>	<b>1.22%</b>	<b>0.81%</b>	<b>1.07%</b>	<b>0.88%</b>	<b>1.28%</b>

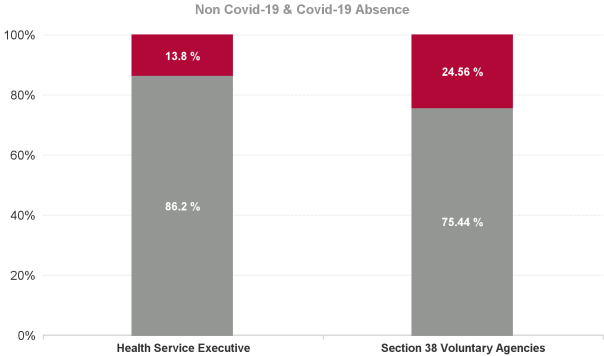
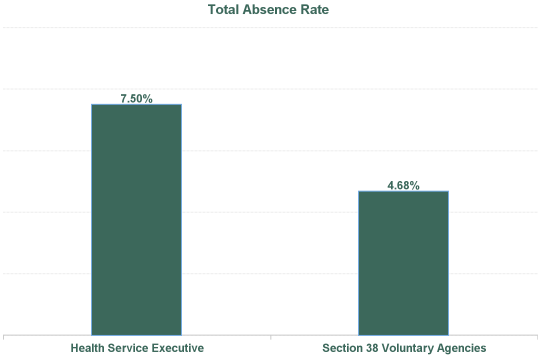
Covid 19 Absence Rate





July 2024

Health Service Absence Rate - by Admin : Jul 2024	Certified absence	Self-certified absence	Non Covid-19 absence	Covid-19 Absence	Total absence rate	Medical & Dental	Nursing & Midwifery	Health & Social Care Professionals	Management & Administrative	General Support	Patient & Client Care
Total	5.84%	0.51%	6.35%	1.04%	7.39%	2.63%	8.08%	6.44%	7.45%	9.15%	9.01%
Health Service Executive	5.96%	0.51%	6.47%	1.04%	7.50%	2.69%	8.15%	6.70%	7.43%	9.27%	9.10%
Section 38 Voluntary Agencies	2.87%	0.65%	3.53%	1.15%	4.68%	1.54%	5.72%	2.53%	7.83%	7.26%	0.00%



Health Service Absence Rate - by Staff Category: Jul 2024	Certified absence	Self-certified absence	Non Covid-19 absence	Covid-19 Absence	Total absence rate	% Non Covid-19 absence	% Covid-19 absence
<b>CHO 1</b>	<b>7.23%</b>	<b>0.49%</b>	<b>7.72%</b>	<b>1.31%</b>	<b>9.03%</b>	<b>85.50%</b>	<b>14.50%</b>
Medical & Dental	0.33%	0.24%	0.57%	0.42%	1.00%	57.50%	42.50%
Nursing & Midwifery	7.25%	0.61%	7.86%	1.64%	9.51%	82.71%	17.29%
Health & Social Care Professionals	6.99%	0.23%	7.23%	1.00%	8.23%	87.82%	12.18%
Management & Administrative	7.13%	0.57%	7.70%	1.30%	9.01%	85.52%	14.48%
General Support	14.00%	0.28%	14.27%	1.66%	15.93%	89.58%	10.42%
Patient & Client Care	10.47%	0.49%	10.96%	0.54%	11.50%	95.30%	4.70%

Health Service Absence Rate - by Staff Category: Jul 2024	Certified absence	Self-certified absence	Non Covid-19 absence	Covid-19 Absence	Total absence rate	% Non Covid-19 absence	% Covid-19 absence
<b>CHO 2</b>	<b>6.42%</b>	<b>0.42%</b>	<b>6.84%</b>	<b>1.02%</b>	<b>7.86%</b>	<b>87.01%</b>	<b>12.99%</b>
Medical & Dental	1.71%	0.08%	1.79%	0.00%	1.79%	100.00%	0.00%
Nursing & Midwifery	6.62%	0.59%	7.21%	1.29%	8.50%	84.80%	15.20%
Health & Social Care Professionals	6.84%	0.36%	7.19%	0.59%	7.79%	92.39%	7.61%
Management & Administrative	5.58%	0.44%	6.02%	0.95%	6.97%	86.42%	13.58%
General Support	7.28%	0.28%	7.56%	0.88%	8.44%	89.52%	10.48%
Patient & Client Care	8.46%	0.30%	8.76%	1.26%	10.02%	87.41%	12.59%

Health Service Absence Rate - by Staff Category: Jul 2024	Certified absence	Self- certified absence	Non Covid-19 absence	Covid-19 Absence	Total absence rate	% Non Covid-19 absence	% Covid-19 absence
<b>CHO 3</b>	<b>6.29%</b>	<b>0.58%</b>	<b>6.87%</b>	<b>1.27%</b>	<b>8.14%</b>	<b>84.43%</b>	<b>15.57%</b>
Medical & Dental	0.59%	0.21%	0.80%	0.88%	1.68%	47.80%	52.20%
Nursing & Midwifery	6.48%	0.79%	7.27%	1.49%	8.76%	83.03%	16.97%
Health & Social Care Professionals	3.59%	0.49%	4.07%	0.47%	4.54%	89.66%	10.34%
Management & Administrative	11.40%	0.20%	11.60%	1.91%	13.51%	85.85%	14.15%
General Support	5.80%	0.30%	6.10%	0.83%	6.93%	88.05%	11.95%
Patient & Client Care	10.33%	0.58%	10.91%	1.58%	12.49%	87.34%	12.66%

Health Service Absence Rate - by Staff Category: Jul 2024	Certified absence	Self- certified absence	Non Covid-19 absence	Covid-19 Absence	Total absence rate	% Non Covid-19 absence	% Covid-19 absence
<b>CHO 4</b>	<b>6.26%</b>	<b>0.43%</b>	<b>6.69%</b>	<b>0.62%</b>	<b>7.31%</b>	<b>91.55%</b>	<b>8.45%</b>
Medical & Dental	2.78%	0.13%	2.91%	0.00%	2.91%	100.00%	0.00%
Nursing & Midwifery	7.03%	0.57%	7.60%	0.69%	8.29%	91.62%	8.38%
Health & Social Care Professionals	6.40%	0.36%	6.75%	0.50%	7.25%	93.15%	6.85%
Management & Administrative	3.39%	0.39%	3.78%	0.27%	4.05%	93.22%	6.78%
General Support	10.47%	0.44%	10.91%	1.06%	11.97%	91.17%	8.83%
Patient & Client Care	7.18%	0.34%	7.52%	1.24%	8.76%	85.89%	14.11%

Health Service Absence Rate - by Staff Category: Jul 2024	Certified absence	Self-certified absence	Non Covid-19 absence	Covid-19 Absence	Total absence rate	% Non Covid-19 absence	% Covid-19 absence
<b>CHO 5</b>	<b>6.03%</b>	<b>0.43%</b>	<b>6.46%</b>	<b>1.24%</b>	<b>7.70%</b>	<b>83.90%</b>	<b>16.10%</b>
Medical & Dental	4.89%	0.23%	5.12%	0.85%	5.97%	85.72%	14.28%
Nursing & Midwifery	7.05%	0.36%	7.42%	1.43%	8.85%	83.80%	16.20%
Health & Social Care Professionals	3.23%	0.30%	3.53%	1.75%	5.27%	66.85%	33.15%
Management & Administrative	5.96%	0.47%	6.43%	0.91%	7.35%	87.59%	12.41%
General Support	5.34%	0.57%	5.91%	0.19%	6.11%	96.82%	3.18%
Patient & Client Care	5.57%	0.78%	6.35%	2.15%	8.49%	74.72%	25.28%

Health Service Absence Rate - by Staff Category: Jul 2024	Certified absence	Self-certified absence	Non Covid-19 absence	Covid-19 Absence	Total absence rate	% Non Covid-19 absence	% Covid-19 absence
<b>CHO 6</b>	<b>3.98%</b>	<b>0.55%</b>	<b>4.53%</b>	<b>1.16%</b>	<b>5.69%</b>	<b>79.64%</b>	<b>20.36%</b>
Medical & Dental	1.19%	0.05%	1.24%	0.00%	1.24%	100.00%	0.00%
Nursing & Midwifery	4.67%	0.68%	5.35%	1.97%	7.32%	73.09%	26.91%
Health & Social Care Professionals	3.55%	0.41%	3.96%	1.31%	5.27%	75.20%	24.80%
Management & Administrative	5.60%	0.60%	6.21%	0.82%	7.03%	88.30%	11.70%
General Support	10.71%	1.75%	12.46%	0.00%	12.46%	100.00%	0.00%
Patient & Client Care	1.98%	0.51%	2.49%	0.47%	2.96%	84.13%	15.87%

Health Service Absence Rate - by Staff Category: Jul 2024	Certified absence	Self-certified absence	Non Covid-19 absence	Covid-19 Absence	Total absence rate	% Non Covid-19 absence	% Covid-19 absence
<b>CHO 7</b>	<b>5.10%</b>	<b>0.47%</b>	<b>5.57%</b>	<b>1.49%</b>	<b>7.06%</b>	<b>78.87%</b>	<b>21.13%</b>
Medical & Dental	2.12%	0.08%	2.20%	0.65%	2.84%	77.26%	22.74%
Nursing & Midwifery	5.42%	0.39%	5.82%	1.34%	7.16%	81.23%	18.77%
Health & Social Care Professionals	4.93%	0.50%	5.43%	0.59%	6.02%	90.15%	9.85%
Management & Administrative	6.41%	0.58%	6.99%	1.23%	8.22%	84.98%	15.02%
General Support	3.26%	0.55%	3.81%	1.53%	5.34%	71.31%	28.69%
Patient & Client Care	6.99%	1.07%	8.07%	4.01%	12.07%	66.80%	33.20%

Health Service Absence Rate - by Staff Category: Jul 2024	Certified absence	Self-certified absence	Non Covid-19 absence	Covid-19 Absence	Total absence rate	% Non Covid-19 absence	% Covid-19 absence
<b>CHO 8</b>	<b>6.20%</b>	<b>0.53%</b>	<b>6.73%</b>	<b>1.29%</b>	<b>8.02%</b>	<b>83.91%</b>	<b>16.09%</b>
Medical & Dental	1.80%	0.10%	1.90%	0.47%	2.37%	80.25%	19.75%
Nursing & Midwifery	6.32%	0.56%	6.88%	1.53%	8.41%	81.81%	18.19%
Health & Social Care Professionals	6.51%	0.35%	6.86%	0.65%	7.51%	91.34%	8.66%
Management & Administrative	5.38%	0.53%	5.91%	1.71%	7.62%	77.61%	22.39%
General Support	10.07%	1.28%	11.34%	2.37%	13.72%	82.72%	17.28%
Patient & Client Care	7.92%	0.61%	8.53%	0.89%	9.41%	90.58%	9.42%

Health Service Absence Rate - by Staff Category: Jul 2024	Certified absence	Self-certified absence	Non Covid-19 absence	Covid-19 Absence	Total absence rate	% Non Covid-19 absence	% Covid-19 absence
<b>CHO 9</b>	<b>5.12%</b>	<b>0.58%</b>	<b>5.70%</b>	<b>0.73%</b>	<b>6.43%</b>	<b>88.65%</b>	<b>11.35%</b>
Medical & Dental	3.51%	0.21%	3.72%	0.18%	3.90%	95.43%	4.57%
Nursing & Midwifery	4.69%	0.72%	5.42%	0.73%	6.15%	88.12%	11.88%
Health & Social Care Professionals	4.54%	0.19%	4.73%	0.86%	5.59%	84.67%	15.33%
Management & Administrative	7.41%	0.79%	8.20%	1.73%	9.93%	82.59%	17.41%
General Support	5.44%	0.66%	6.10%	0.79%	6.89%	88.52%	11.48%
Patient & Client Care	6.81%	0.53%	7.33%	0.11%	7.45%	98.50%	1.50%

Health Service Absence Rate - by Staff Category: Jul 2024	Certified absence	Self-certified absence	Non Covid-19 absence	Covid-19 Absence	Total absence rate	% Non Covid-19 absence	% Covid-19 absence
<b>Other Comm</b>	<b>4.05%</b>	<b>0.90%</b>	<b>4.94%</b>	<b>0.30%</b>	<b>5.24%</b>	<b>94.29%</b>	<b>5.71%</b>
Medical & Dental	0.77%	0.00%	0.77%	0.00%	0.77%	100.00%	0.00%
Nursing & Midwifery	5.07%	1.35%	6.43%	0.38%	6.81%	94.38%	5.62%
Health & Social Care Professionals	5.08%	0.36%	5.44%	0.85%	6.29%	86.54%	13.46%
Management & Administrative	3.27%	0.04%	3.31%	0.12%	3.43%	96.60%	3.40%
General Support	6.59%	0.39%	6.99%	1.23%	8.22%	85.01%	14.99%
Patient & Client Care	2.45%	1.42%	3.87%	0.00%	3.87%	100.00%	0.00%

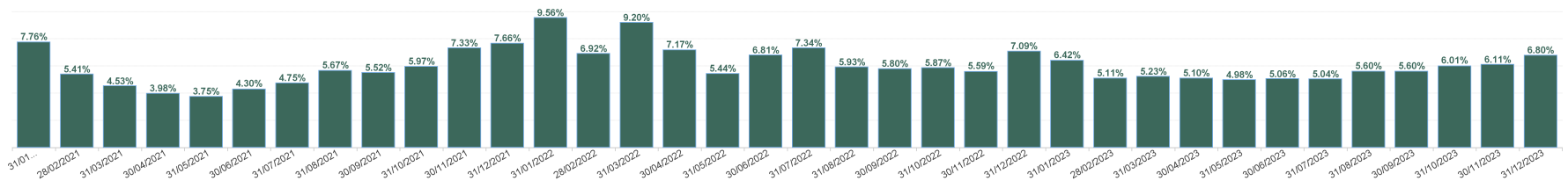


Year / Month	Certified absence	Self-certified absence	Non Covid-19 absence	Covid-19 Absence	Total absence rate	Medical & Dental	Nursing & Midwifery	Health & Social Care Professionals	Management & Administrative	General Support	Patient & Client Care
Jul 2024	5.84%	0.51%	6.35%	1.04%	7.39%	2.63%	8.08%	6.44%	7.45%	9.15%	9.01%
Jun 2024	5.36%	0.57%	5.93%	0.69%	6.62%	3.30%	7.10%	5.78%	6.34%	7.93%	7.70%
May 2024	5.15%	0.51%	5.66%	0.26%	5.92%	2.58%	6.38%	4.86%	5.63%	6.86%	7.82%
Apr 2024	5.16%	0.56%	5.71%	0.18%	5.89%	2.15%	6.24%	4.66%	5.50%	8.00%	8.02%
Mar 2024	5.22%	0.55%	5.77%	0.18%	5.96%	1.78%	6.35%	5.34%	5.74%	7.66%	7.56%
Feb 2024	5.12%	0.55%	5.67%	0.28%	5.95%	2.63%	6.02%	5.90%	5.85%	7.21%	7.72%
Jan 2024	5.44%	0.60%	6.04%	0.56%	6.61%	2.66%	6.68%	6.31%	8.04%	8.04%	7.58%
<b>2024</b>	<b>5.33%</b>	<b>0.55%</b>	<b>5.88%</b>	<b>0.45%</b>	<b>6.33%</b>	<b>2.52%</b>	<b>6.69%</b>	<b>5.62%</b>	<b>6.40%</b>	<b>7.84%</b>	<b>7.91%</b>
Dec 2023	5.47%	0.67%	6.13%	0.66%	6.80%	2.57%	7.35%	6.63%	6.38%	7.20%	8.05%
Nov 2023	5.14%	0.57%	5.71%	0.40%	6.11%	2.25%	6.51%	4.99%	5.78%	8.15%	8.08%
Oct 2023	4.95%	0.54%	5.49%	0.52%	6.01%	2.35%	6.48%	5.05%	5.48%	8.67%	7.12%
Sep 2023	4.43%	0.49%	4.92%	0.68%	5.60%	1.58%	6.23%	4.69%	5.35%	7.80%	6.54%
Aug 2023	4.45%	0.46%	4.91%	0.70%	5.60%	1.80%	5.89%	5.43%	5.35%	7.56%	6.72%
Jul 2023	4.15%	0.49%	4.64%	0.40%	5.04%	1.93%	5.54%	3.92%	3.64%	6.47%	6.76%
Jun 2023	4.30%	0.49%	4.79%	0.27%	5.06%	2.61%	5.14%	3.79%	4.15%	8.07%	7.01%
May 2023	4.14%	0.48%	4.62%	0.36%	4.98%	2.25%	5.58%	3.91%	3.60%	6.64%	6.21%
Apr 2023	4.22%	0.50%	4.72%	0.37%	5.10%	2.08%	5.68%	3.93%	3.89%	6.41%	6.45%
Mar 2023	4.29%	0.47%	4.76%	0.47%	5.23%	2.18%	5.52%	4.20%	4.00%	7.28%	7.45%
Feb 2023	4.25%	0.50%	4.75%	0.36%	5.11%	1.37%	5.72%	3.85%	4.03%	7.12%	6.56%
Jan 2023	5.02%	0.56%	5.58%	0.83%	6.42%	1.45%	7.25%	5.30%	5.43%	8.81%	7.07%
<b>2023</b>	<b>4.57%</b>	<b>0.52%</b>	<b>5.09%</b>	<b>0.50%</b>	<b>5.59%</b>	<b>2.05%</b>	<b>6.07%</b>	<b>4.63%</b>	<b>4.77%</b>	<b>7.52%</b>	<b>7.01%</b>
Dec 2022	5.31%	0.69%	6.00%	1.09%	7.09%	2.20%	8.01%	5.85%	6.65%	7.62%	8.27%
Nov 2022	4.46%	0.55%	5.01%	0.59%	5.59%	1.98%	6.39%	4.54%	5.00%	6.24%	6.59%
Oct 2022	4.60%	0.60%	5.19%	0.68%	5.87%	2.31%	6.94%	4.19%	4.06%	7.01%	6.80%
Sep 2022	4.64%	0.51%	5.15%	0.64%	5.80%	1.88%	6.85%	3.67%	4.31%	7.54%	7.26%
Aug 2022	4.61%	0.50%	5.11%	0.81%	5.93%	1.36%	7.14%	4.13%	4.61%	7.15%	6.55%
Jul 2022	4.85%	0.46%	5.31%	2.03%	7.34%	2.35%	8.29%	6.30%	5.35%	8.47%	8.66%
Jun 2022	4.46%	0.54%	5.01%	1.80%	6.81%	2.78%	7.74%	5.65%	5.64%	6.61%	8.13%
May 2022	4.07%	0.45%	4.52%	0.91%	5.44%	2.44%	6.07%	3.91%	3.85%	6.93%	7.00%
Apr 2022	4.15%	0.47%	4.61%	2.56%	7.17%	3.09%	7.99%	5.29%	5.62%	8.61%	9.06%
Mar 2022	4.50%	0.51%	5.01%	4.19%	9.20%	4.37%	10.45%	7.47%	7.28%	11.64%	10.10%
Feb 2022	3.81%	0.43%	4.24%	2.68%	6.92%	3.47%	7.95%	5.63%	5.27%	7.70%	7.55%
Jan 2022	3.88%	0.33%	4.21%	5.36%	9.56%	3.68%	11.10%	6.73%	7.18%	10.62%	11.43%
<b>2022</b>	<b>4.44%</b>	<b>0.50%</b>	<b>4.95%</b>	<b>1.94%</b>	<b>6.89%</b>	<b>2.66%</b>	<b>7.92%</b>	<b>5.26%</b>	<b>5.40%</b>	<b>8.00%</b>	<b>8.08%</b>
Dec 2021	4.33%	0.43%	4.76%	2.90%	7.66%	2.84%	9.05%	5.41%	5.17%	9.70%	8.72%
Nov 2021	4.53%	0.57%	5.10%	2.23%	7.33%	2.44%	8.46%	5.24%	5.38%	9.77%	9.10%
Oct 2021	4.32%	0.49%	4.82%	1.15%	5.97%	3.32%	6.82%	4.48%	4.17%	7.74%	6.41%
Sep 2021	4.08%	0.41%	4.49%	1.02%	5.52%	2.97%	6.35%	3.56%	4.70%	7.43%	6.00%
Aug 2021	4.33%	0.40%	4.73%	0.94%	5.67%	1.45%	6.58%	4.55%	4.53%	5.35%	7.31%
Jul 2021	3.66%	0.40%	4.06%	0.68%	4.75%	1.56%	5.43%	3.79%	3.78%	5.82%	5.76%
Jun 2021	3.44%	0.39%	3.83%	0.47%	4.30%	1.25%	4.82%	3.88%	2.64%	6.42%	5.26%
May 2021	2.88%	0.32%	3.19%	0.55%	3.75%	0.78%	4.46%	2.93%	2.01%	4.62%	4.99%
Apr 2021	3.04%	0.33%	3.37%	0.61%	3.98%	1.19%	4.76%	3.07%	2.52%	4.25%	5.29%
Mar 2021	3.21%	0.41%	3.62%	0.92%	4.53%	0.99%	5.22%	3.52%	3.23%	5.67%	6.11%
Feb 2021	3.45%	0.40%	3.84%	1.56%	5.41%	1.49%	6.43%	4.01%	4.16%	5.18%	7.24%
Jan 2021	3.73%	0.23%	3.96%	3.80%	7.76%	3.93%	9.63%	3.98%	4.59%	7.68%	9.58%
<b>2021</b>	<b>3.75%</b>	<b>0.40%</b>	<b>4.15%</b>	<b>1.41%</b>	<b>5.56%</b>	<b>2.02%</b>	<b>6.52%</b>	<b>4.04%</b>	<b>3.84%</b>	<b>6.66%</b>	<b>6.82%</b>

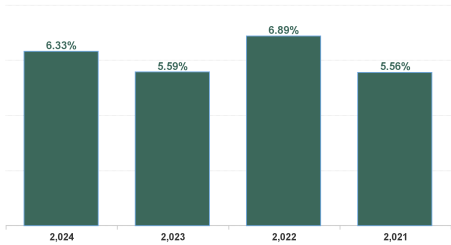


Year / Month	Certified absence	Self-certified absence	Non Covid-19 absence	Covid-19 Absence	Total absence rate	CHO 1	CHO 2	CHO 3	CHO 4	CHO 5	CHO 6	CHO 7	CHO 8	CHO 9	Other Comm	Mental Health
Jul 2024	5.84%	0.51%	6.35%	1.04%	7.39%	9.03%	7.86%	8.14%	7.31%	7.70%	5.69%	7.06%	8.02%	6.43%	5.24%	7.39%
Jun 2024	5.36%	0.57%	5.93%	0.69%	6.62%	8.13%	6.48%	6.17%	7.47%	7.14%	4.88%	6.81%	7.25%	5.19%	5.40%	6.62%
May 2024	5.15%	0.51%	5.66%	0.26%	5.92%	6.99%	5.86%	6.45%	6.32%	5.87%	6.06%	5.13%	6.64%	4.76%	4.73%	5.92%
Apr 2024	5.16%	0.56%	5.71%	0.18%	5.89%	7.17%	5.94%	6.76%	6.19%	6.33%	4.57%	5.64%	6.12%	5.07%	3.72%	5.89%
Mar 2024	5.22%	0.55%	5.77%	0.18%	5.96%	7.15%	5.34%	6.30%	5.80%	6.45%	4.75%	5.43%	7.03%	5.65%	5.40%	5.96%
Feb 2024	5.12%	0.55%	5.67%	0.28%	5.95%	7.01%	4.85%	6.41%	5.45%	6.59%	4.75%	6.23%	7.17%	5.44%	5.77%	5.95%
Jan 2024	5.44%	0.60%	6.04%	0.56%	6.61%	7.13%	6.06%	7.74%	6.79%	8.52%	5.90%	5.80%	7.51%	5.28%	4.98%	6.61%
2024	5.33%	0.55%	5.88%	0.45%	6.33%	7.52%	6.06%	6.88%	6.47%	6.96%	5.24%	6.00%	7.11%	5.40%	5.12%	6.33%
Dec 2023	5.47%	0.67%	6.13%	0.66%	6.80%	7.64%	5.86%	7.63%	6.93%	8.54%	4.67%	6.36%	7.70%	5.56%	6.49%	6.80%
Nov 2023	5.14%	0.57%	5.71%	0.40%	6.11%	7.56%	5.45%	7.44%	6.43%	6.61%	4.38%	6.21%	6.90%	5.07%	4.83%	6.11%
Oct 2023	4.95%	0.54%	5.49%	0.52%	6.01%	7.66%	4.07%	7.32%	6.67%	7.21%	4.61%	6.24%	5.73%	5.88%	4.44%	6.01%
Sep 2023	4.43%	0.49%	4.92%	0.68%	5.60%	7.41%	3.82%	6.59%	5.80%	6.63%	3.65%	7.29%	5.47%	4.83%	4.72%	5.60%
Aug 2023	4.45%	0.46%	4.91%	0.70%	5.60%	8.10%	3.19%	6.64%	6.32%	6.71%	4.67%	7.01%	6.11%	4.29%	3.79%	5.60%
Jul 2023	4.15%	0.49%	4.64%	0.40%	5.04%	7.15%	2.79%	6.07%	5.65%	5.77%	3.07%	6.09%	5.06%	4.34%	4.44%	5.04%
Jun 2023	4.30%	0.49%	4.79%	0.27%	5.06%	7.47%	2.91%	4.51%	5.77%	5.82%	3.27%	6.24%	5.43%	4.26%	4.78%	5.06%
May 2023	4.14%	0.48%	4.62%	0.36%	4.98%	7.22%	2.56%	5.54%	5.80%	5.72%	3.21%	5.46%	4.97%	4.24%	5.17%	4.98%
Apr 2023	4.22%	0.50%	4.72%	0.37%	5.10%	7.15%	2.79%	6.07%	5.65%	5.76%	3.39%	6.09%	5.04%	4.41%	4.87%	5.10%
Mar 2023	4.29%	0.47%	4.76%	0.47%	5.23%	7.22%	3.23%	6.51%	3.99%	6.39%	4.56%	6.59%	5.57%	4.74%	5.13%	5.23%
Feb 2023	4.25%	0.50%	4.75%	0.36%	5.11%	6.77%	2.80%	5.08%	5.58%	6.84%	3.84%	6.51%	5.39%	4.71%	3.72%	5.11%
Jan 2023	5.02%	0.56%	5.58%	0.83%	6.42%	7.65%	4.50%	7.15%	7.40%	8.48%	5.97%	6.12%	6.70%	5.24%	5.03%	6.42%
2023	4.57%	0.52%	5.09%	0.50%	5.59%	7.42%	3.65%	6.40%	5.94%	6.71%	4.09%	6.34%	5.84%	4.80%	4.79%	5.59%
Dec 2022	5.31%	0.69%	6.00%	1.09%	7.09%	8.93%	4.30%	8.91%	5.89%	9.30%	5.50%	7.53%	7.82%	6.41%	7.38%	7.09%
Nov 2022	4.46%	0.55%	5.01%	0.59%	5.59%	6.98%	3.74%	7.18%	5.03%	6.96%	4.18%	6.68%	6.50%	5.21%	3.67%	5.59%
Oct 2022	4.60%	0.60%	5.19%	0.68%	5.87%	6.36%	4.52%	6.69%	5.32%	7.44%	5.08%	6.92%	6.59%	5.55%	4.15%	5.87%
Sep 2022	4.64%	0.51%	5.15%	0.64%	5.80%	7.30%	3.29%	7.14%	4.68%	7.38%	5.40%	7.45%	6.24%	5.74%	4.41%	5.80%
Aug 2022	4.61%	0.50%	5.11%	0.81%	5.93%	7.27%	3.95%	7.80%	5.42%	6.90%	5.36%	7.61%	7.22%	4.89%	4.34%	5.93%
Jul 2022	4.85%	0.46%	5.31%	2.03%	7.34%	8.81%	5.25%	9.19%	7.04%	8.12%	7.07%	9.69%	8.72%	5.55%	5.39%	7.34%
Jun 2022	4.46%	0.54%	5.01%	1.80%	6.81%	8.19%	5.03%	8.63%	4.63%	7.25%	5.33%	8.50%	8.76%	6.14%	6.87%	6.81%
May 2022	4.07%	0.45%	4.52%	0.91%	5.44%	6.42%	4.15%	7.10%	4.78%	6.02%	4.46%	5.50%	6.47%	5.05%	4.72%	5.44%
Apr 2022	4.15%	0.47%	4.61%	2.56%	7.17%	7.10%	5.05%	8.99%	8.15%	7.19%	5.90%	7.28%	9.21%	6.36%	6.81%	7.17%
Mar 2022	4.50%	0.51%	5.01%	4.19%	9.20%	10.34%	7.06%	11.77%	7.05%	10.91%	6.52%	11.33%	10.97%	8.03%	8.88%	9.20%
Feb 2022	3.81%	0.43%	4.24%	2.68%	6.92%	8.69%	4.12%	9.35%	6.97%	7.69%	5.83%	7.97%	8.47%	5.07%	6.51%	6.92%
Jan 2022	3.88%	0.33%	4.21%	5.36%	9.56%	11.06%	6.65%	12.72%	9.26%	9.88%	7.50%	9.27%	11.60%	8.55%	9.72%	9.56%
2022	4.44%	0.50%	4.95%	1.94%	6.89%	8.12%	4.75%	8.80%	6.19%	7.92%	5.64%	7.97%	8.24%	6.05%	6.09%	6.89%
Dec 2021	4.33%	0.43%	4.76%	2.90%	7.66%	9.28%	5.22%	9.26%	6.08%	9.06%	6.07%	7.79%	8.98%	7.31%	8.70%	7.66%
Nov 2021	4.53%	0.57%	5.10%	2.23%	7.33%	8.89%	5.66%	7.58%	5.43%	8.40%	5.89%	7.27%	9.30%	7.72%	7.51%	7.33%
Oct 2021	4.32%	0.49%	4.82%	1.15%	5.97%	7.71%	3.81%	7.04%	4.84%	7.45%	5.08%	7.09%	6.65%	5.46%	5.63%	5.97%
Sep 2021	4.08%	0.41%	4.49%	1.02%	5.52%	8.25%	3.58%	8.29%	4.21%	6.59%	3.72%	6.40%	6.27%	5.10%	4.38%	5.52%
Aug 2021	4.33%	0.40%	4.73%	0.94%	5.67%	8.23%	5.06%	7.17%	4.14%	6.34%	4.29%	6.34%	6.96%	4.55%	4.58%	5.67%
Jul 2021	3.66%	0.40%	4.06%	0.68%	4.75%	6.38%	2.58%	7.24%	3.52%	5.63%	3.78%	5.47%	6.08%	4.27%	3.82%	4.75%
Jun 2021	3.44%	0.39%	3.83%	0.47%	4.30%	5.30%	1.51%	6.27%	4.05%	4.97%	3.90%	5.25%	6.10%	4.33%	3.16%	4.30%
May 2021	2.88%	0.32%	3.19%	0.55%	3.75%	4.57%	1.24%	4.91%	2.88%	4.65%	3.70%	4.06%	5.80%	4.00%	1.98%	3.75%
Apr 2021	3.04%	0.33%	3.37%	0.61%	3.98%	4.43%	2.68%	5.07%	3.29%	4.13%	3.43%	4.62%	6.36%	3.70%	2.90%	3.98%
Mar 2021	3.21%	0.41%	3.62%	0.92%	4.53%	5.35%	2.90%	6.31%	4.19%	4.63%	4.04%	5.26%	5.50%	4.01%	4.28%	4.53%
Feb 2021	3.45%	0.40%	3.84%	1.56%	5.41%	6.15%	3.66%	6.69%	4.56%	5.28%	4.55%	6.57%	6.76%	5.70%	5.14%	5.41%
Jan 2021	3.73%	0.23%	3.96%	3.80%	7.76%	9.00%	4.58%	10.47%	5.72%	9.16%	10.21%	8.23%	8.51%	6.82%	7.55%	7.76%
2021	3.75%	0.40%	4.15%	1.41%	5.56%	6.96%	3.54%	7.19%	4.57%	6.35%	4.89%	6.18%	6.93%	5.24%	4.85%	5.56%

Total Absence Rate



Total Absence Rate



% of Absence Non Covid-19 / Covid-19

