

# Mental Health Employment Report : SEP 2024

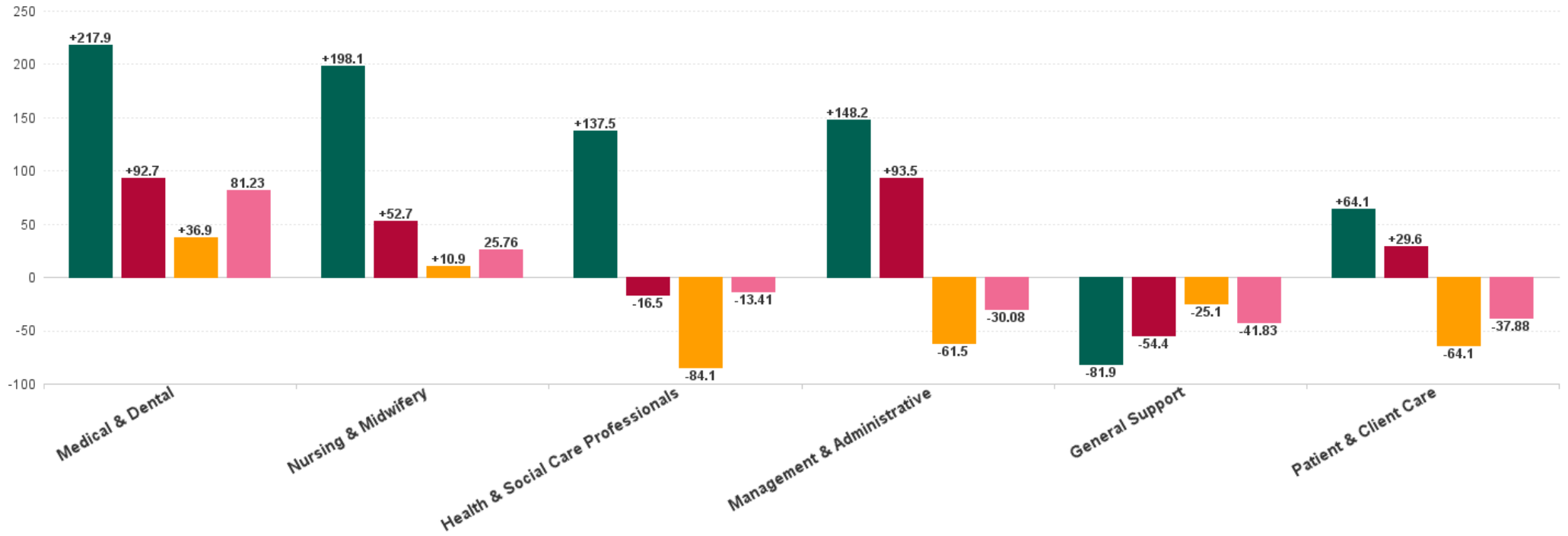
## Mental Health Employment Report by Staff Group

SEP 2024	WTE DEC 2019	WTE DEC 2022	WTE DEC 2023	WTE AUG 2024	WTE SEP 2024	WTE Change 2023	WTE Change 2024	WTE Change AUG 2024	WTE Change Dec 2022 to SEP 2024	WTE Change Dec 2019 to SEP 2024	% WTE Change Dec 2022 to SEP 2024	No. SEP 2024
<b>Overall</b>	<b>9,967</b>	<b>10,453</b>	<b>10,838</b>	<b>10,671</b>	<b>10,651</b>	<b>+385</b>	<b>-187</b>	<b>-20</b>	<b>+197</b>	<b>+684</b>	<b>+1.9%</b>	<b>11,726</b>
Consultants	353	397	430	438	442	+33	+12	+4	+45	+90	+11.4%	486
Registrars	269	345	339	344	349	-6	+10	+5	+4	+80	+1.1%	363
SHO/ Interns	261	267	297	303	312	+30	+15	+9	+45	+50	+16.7%	322
Medical/ Dental, other	5	4	3	3	3	-1	+0	+0	-1	-2	-24.0%	6
<b>Medical &amp; Dental</b>	<b>888</b>	<b>1,013</b>	<b>1,069</b>	<b>1,088</b>	<b>1,105</b>	<b>+56</b>	<b>+37</b>	<b>+17</b>	<b>+93</b>	<b>+218</b>	<b>+9.1%</b>	<b>1,177</b>
Nurse/ Midwife Manager	1,201	1,245	1,237	1,177	1,163	-8	-74	-13	-82	-38	-6.6%	1,218
Nurse/ Midwife Specialist & AN/MP	460	631	734	758	746	+104	+12	-12	+115	+286	+18.3%	807
Staff Nurse/ Staff Midwife	3,002	2,948	2,892	2,851	2,843	-56	-49	-9	-105	-160	-3.6%	3,086
Pre-registration Nurse/ Midwife Intern	25	26	14	159	116	-13	+102	-44	+89	+91	+338.0%	222
Post-registration Nurse/ Midwife Student	1									-1	-100.0%	
Nursing/ Midwifery awaiting registration	57	39	56	3	72	+17	+17	+69	+34	+16	+87.0%	94
Nursing/ Midwifery Student	83	65	69	162	188	+4	+119	+26	+123	+105	+188.8%	316
Nursing/ Midwifery other	32	34	33	36	36	-2	+3	-0	+1	+4	+3.9%	40
<b>Nursing &amp; Midwifery</b>	<b>4,778</b>	<b>4,924</b>	<b>4,965</b>	<b>4,984</b>	<b>4,976</b>	<b>+42</b>	<b>+11</b>	<b>-8</b>	<b>+53</b>	<b>+198</b>	<b>+1.1%</b>	<b>5,467</b>
Speech & Language Therapists	62	68	66	65	65	-2	-1	+0	-2	+3	-3.7%	78
Podiatrists & Chiropodists	1	1				-1			-1	-1	-100.0%	
Physiotherapists	2	3	1	1	1	-2	+0	+0	-2	-1	-67.3%	2
Occupational Therapists	337	346	353	327	325	+7	-28	-2	-21	-11	-6.1%	371
Dietitians	19	18	24	23	24	+6	-1	+1	+6	+5	+31.3%	27
Therapy Professions	420	435	444	416	415	+9	-29	-1	-20	-5	-4.7%	478
Social Care	74	72	63	59	58	-9	-5	-1	-14	-16	-19.4%	66
Social Workers	350	414	431	412	410	+17	-20	-1	-3	+60	-0.8%	459
Psychologists	394	448	467	446	444	+20	-24	-3	-4	+49	-0.9%	519
Pharmacy	19	19	25	22	22	+6	-3	-0	+3	+4	+14.9%	30
H&SC, Other	107	130	155	155	153	+25	-3	-2	+23	+46	+17.3%	176
<b>Health &amp; Social Care Professionals</b>	<b>1,364</b>	<b>1,518</b>	<b>1,586</b>	<b>1,510</b>	<b>1,502</b>	<b>+68</b>	<b>-84</b>	<b>-8</b>	<b>-16</b>	<b>+137</b>	<b>-1.1%</b>	<b>1,728</b>
Management (VIII & above)	58	75	73	74	73	-1	-0	-0	-1	+15	-1.8%	74
Administrative/ Supervisory (V to VII)	238	287	329	320	319	+42	-10	-1	+32	+81	+11.0%	336
Clerical (III & IV)	717	707	821	780	770	+115	-51	-10	+63	+53	+9.0%	860
<b>Management &amp; Administrative</b>	<b>1,014</b>	<b>1,068</b>	<b>1,223</b>	<b>1,173</b>	<b>1,162</b>	<b>+155</b>	<b>-62</b>	<b>-11</b>	<b>+93</b>	<b>+148</b>	<b>+8.7%</b>	<b>1,270</b>
Support	585	556	530	505	504	-25	-26	-1	-52	-81	-9.3%	570
Maintenance/ Technical	127	129	125	126	126	-4	+1	-0	-3	-1	-2.1%	129
<b>General Support</b>	<b>712</b>	<b>685</b>	<b>655</b>	<b>631</b>	<b>630</b>	<b>-29</b>	<b>-25</b>	<b>-1</b>	<b>-54</b>	<b>-82</b>	<b>-7.9%</b>	<b>699</b>
Health Care Assistants	996	1,030	1,111	1,072	1,063	+81	-47	-8	+33	+68	+3.2%	1,139
Care, other	216	216	229	212	212	+13	-17	-0	-4	-4	-1.7%	246
<b>Patient &amp; Client Care</b>	<b>1,212</b>	<b>1,246</b>	<b>1,340</b>	<b>1,284</b>	<b>1,276</b>	<b>+94</b>	<b>-64</b>	<b>-8</b>	<b>+30</b>	<b>+64</b>	<b>+2.4%</b>	<b>1,385</b>



# WTE Change by Staff Category

■ WTE change since DEC 2019 
 ■ WTE change since DEC 2022 
 ■ WTE change since DEC 2023 
 ■ WTE change since SEP 2023



## Mental Health Report by CHO: SEP 2024

SEP 2024	WTE DEC 2019	WTE DEC 2022	WTE DEC 2023	WTE AUG 2024	WTE SEP 2024	WTE Change 2023	WTE Change 2024	WTE Change AUG 2024	WTE Change Dec 2022 to SEP 2024	WTE Change Dec 2019 to SEP 2024	% WTE Change Dec 2022 to SEP 2024	No. SEP 2024
<b>Overall</b>	<b>9,967</b>	<b>10,453</b>	<b>10,838</b>	<b>10,671</b>	<b>10,651</b>	<b>+385</b>	<b>-187</b>	<b>-20</b>	<b>+197</b>	<b>+684</b>	<b>1.89%</b>	<b>11,726</b>
CHO 1	953	1,024	1,050	1,032	1,032	+26	-18	-1	+8	+79	0.79%	1,125
CHO 2	1,308	1,329	1,361	1,335	1,331	+31	-29	-4	+2	+23	0.15%	1,459
CHO 3	795	814	852	829	832	+37	-19	+3	+18	+37	2.21%	912
CHO 4	1,499	1,562	1,615	1,563	1,566	+54	-49	+4	+5	+68	0.30%	1,756
CHO 5	1,177	1,224	1,325	1,309	1,302	+101	-23	-7	+77	+124	6.32%	1,445
CHO 6	593	650	683	681	671	+33	-12	-11	+21	+78	3.27%	758
CHO 7	835	879	912	926	929	+34	+17	+3	+50	+94	5.73%	1,011
CHO 8	1,098	1,091	1,123	1,109	1,113	+32	-9	+4	+23	+15	2.08%	1,215
CHO 9	1,272	1,371	1,338	1,309	1,307	-33	-31	-3	-64	+35	-4.68%	1,452
other Community Services	438	511	580	577	568	+69	-11	-9	+57	+131	11.20%	593



### % Total by CHO



# Mental Health Employment Report by HSE/S38: SEP 2024

SEP 2024	WTE DEC 2019	WTE DEC 2022	WTE DEC 2023	WTE AUG 2024	WTE SEP 2024	WTE Change 2023	WTE Change 2024	WTE Change AUG 2024	WTE Change Dec 2022 to SEP 2024	WTE Change Dec 2019 to SEP 2024	% WTE Change Dec 2022 to SEP 2024	No. SEP 2024
<b>Overall</b>	<b>9,967</b>	<b>10,453</b>	<b>10,838</b>	<b>10,671</b>	<b>10,651</b>	<b>+385</b>	<b>-187</b>	<b>-20</b>	<b>+197</b>	<b>+684</b>	<b>1.89%</b>	<b>11,726</b>
Health Service Executive	9,526	10,023	10,443	10,280	10,261	+421	-182	-19	+239	+735	2.38%	11,273
Section 38 Voluntary Agencies	441	431	395	390	390	-36	-5	-1	-41	-52	-9.52%	453



## Mental Health Employment Report by HSE: SEP 2024

SEP 2024	WTE DEC 2019	WTE DEC 2022	WTE DEC 2023	WTE AUG 2024	WTE SEP 2024	WTE Change 2023	WTE Change 2024	WTE Change AUG 2024	WTE Change Dec 2022 to SEP 2024	WTE Change Dec 2019 to SEP 2024	% WTE Change Dec 2022 to SEP 2024	No. SEP 2024
<b>Total HSE</b>	<b>9,526</b>	<b>10,023</b>	<b>10,443</b>	<b>10,280</b>	<b>10,261</b>	<b>+421</b>	<b>-182</b>	<b>-19</b>	<b>+238</b>	<b>+735</b>	<b>+2.4%</b>	<b>11,273</b>
Consultants	333	372	401	409	413	+29	+11	+3	+41	+80	+11.0%	450
Registrars	250	325	322	322	327	-3	+5	+4	+2	+76	+0.5%	337
SHO/ Interns	255	260	288	294	304	+28	+16	+10	+44	+48	+16.7%	314
Medical/ Dental, other	5	4	3	3	3	-1	+0	+0	-1	-2	-24.0%	6
<b>Medical &amp; Dental</b>	<b>843</b>	<b>961</b>	<b>1,014</b>	<b>1,029</b>	<b>1,046</b>	<b>+53</b>	<b>+32</b>	<b>+17</b>	<b>+85</b>	<b>+203</b>	<b>+8.9%</b>	<b>1,107</b>
Nurse/ Midwife Manager	1,163	1,211	1,206	1,146	1,134	-6	-72	-12	-78	-29	-6.4%	1,186
Nurse/ Midwife Specialist & AN/MP	453	620	721	744	733	+101	+12	-11	+113	+280	+18.2%	792
Staff Nurse/ Staff Midwife	2,879	2,838	2,820	2,784	2,771	-19	-49	-13	-68	-108	-2.4%	3,010
Nursing/ Midwifery awaiting registration	57	38	56	3	67	+18	+12	+64	+30	+11	+78.7%	89
Post-registration Nurse/ Midwife Student	1									-1	-100.0%	
Pre-registration Nurse/ Midwife Intern	18	18	7	153	116	-11	+108	-37	+97	+98	+528.3%	222
Nursing/ Midwifery Student	76	56	63	156	183	+7	+120	+27	+127	+107	+226.1%	311
Nursing/ Midwifery other	29	32	33	34	33	+1	+1	-1	+1	+4	+4.2%	37
<b>Nursing &amp; Midwifery</b>	<b>4,601</b>	<b>4,758</b>	<b>4,842</b>	<b>4,864</b>	<b>4,854</b>	<b>+84</b>	<b>+12</b>	<b>-10</b>	<b>+96</b>	<b>+253</b>	<b>+2.0%</b>	<b>5,336</b>
Dietitians	19	18	23	22	23	+6	-1	+1	+5	+4	+29.4%	26
Occupational Therapists	322	330	339	313	313	+9	-27	-0	-17	-10	-5.3%	354
Physiotherapists	1	2	1	1	1	-1	+0	+0	-1	-0	-59.0%	1
Podiatrists & Chiropractors	1	1				-1			-1	-1	-100.0%	
Speech & Language Therapists	46	57	57	56	56	-0	-1	+0	-1	+10	-2.0%	66
Therapy Professions	389	407	420	392	392	+13	-28	+0	-15	+3	-3.7%	447
Social Care	48	44	39	36	36	-5	-4	+0	-8	-13	-18.9%	40
Social Workers	331	394	410	395	394	+17	-17	-1	+0	+63	+0.0%	441
Psychologists	379	423	440	421	419	+17	-22	-2	-5	+40	-1.1%	488
Pharmacy	17	17	23	20	20	+5	-3	-0	+2	+3	+13.5%	27
H&SC, Other	102	130	148	151	149	+18	+1	-1	+20	+47	+15.1%	172
<b>Health &amp; Social Care Professionals</b>	<b>1,265</b>	<b>1,415</b>	<b>1,481</b>	<b>1,413</b>	<b>1,409</b>	<b>+66</b>	<b>-72</b>	<b>-4</b>	<b>-6</b>	<b>+144</b>	<b>-0.4%</b>	<b>1,615</b>
Management (VIII & above)	56	73	70	71	70	-2	-0	-0	-2	+14	-3.3%	71
Administrative/ Supervisory (V to VII)	217	264	308	296	295	+45	-13	-1	+32	+79	+12.0%	309
Clerical (III & IV)	673	670	781	739	729	+111	-52	-10	+59	+56	+8.8%	811
<b>Management &amp; Administrative</b>	<b>946</b>	<b>1,006</b>	<b>1,160</b>	<b>1,106</b>	<b>1,094</b>	<b>+153</b>	<b>-65</b>	<b>-11</b>	<b>+88</b>	<b>+149</b>	<b>+8.8%</b>	<b>1,191</b>
Support	547	523	501	478	477	-22	-24	-1	-46	-70	-8.8%	532
Maintenance/ Technical	121	123	118	121	120	-5	+2	-1	-3	-1	-2.3%	122
<b>General Support</b>	<b>668</b>	<b>646</b>	<b>618</b>	<b>599</b>	<b>597</b>	<b>-27</b>	<b>-22</b>	<b>-2</b>	<b>-49</b>	<b>-71</b>	<b>-7.6%</b>	<b>654</b>
Health Care Assistants	990	1,024	1,103	1,061	1,052	+78	-50	-8	+28	+63	+2.7%	1,128
Care, other	213	213	225	209	209	+13	-16	-0	-4	-4	-1.8%	242
<b>Patient &amp; Client Care</b>	<b>1,203</b>	<b>1,237</b>	<b>1,328</b>	<b>1,270</b>	<b>1,261</b>	<b>+91</b>	<b>-67</b>	<b>-9</b>	<b>+24</b>	<b>+58</b>	<b>+2.0%</b>	<b>1,370</b>

## Mental Health Employment Report by S38 Vols: SEP 2024

SEP 2024	WTE DEC 2019	WTE DEC 2022	WTE DEC 2023	WTE AUG 2024	WTE SEP 2024	WTE Change 2023	WTE Change 2024	WTE Change AUG 2024	WTE Change Dec 2022 to SEP 2024	WTE Change Dec 2019 to SEP 2024	% WTE Change Dec 2022 to SEP 2024	No. SEP 2024
<b>Total S38 Vols</b>	<b>441</b>	<b>431</b>	<b>395</b>	<b>390</b>	<b>390</b>	<b>-36</b>	<b>-5</b>	<b>-1</b>	<b>-41</b>	<b>-52</b>	<b>-9.52%</b>	<b>453</b>
Consultants	20	25	29	29	30	+4	+1	+0	+4	+10	17.36%	36
Registrars	19	20	17	22	22	-3	+5	+1	+2	+3	10.78%	26
SHO/ Interns	6	7	9	9	8	+2	-1	-1	+1	+2	14.29%	8
<b>Medical &amp; Dental</b>	<b>45</b>	<b>52</b>	<b>54</b>	<b>60</b>	<b>60</b>	<b>+2</b>	<b>+5</b>	<b>+0</b>	<b>+8</b>	<b>+15</b>	<b>14.43%</b>	<b>70</b>
Nurse/ Midwife Manager	38	34	32	31	30	-2	-2	-1	-4	-8	-12.80%	32
Nurse/ Midwife Specialist & AN/MP	7	11	13	14	13	+2	-0	-1	+2	+6	22.12%	15
Staff Nurse/ Staff Midwife	123	109	72	68	72	-37	+0	+4	-37	-51	-34.06%	76
Nursing/ Midwifery awaiting registration		1			5	-1	+5	+5	+4	+5	400.00%	5
Pre-registration Nurse/ Midwife Intern	7	8	7	7		-2	-7	-7	-8	-7	-100.00%	
Nursing/ Midwifery Student	7	9	7	7	5	-3	-2	-2	-4	-2	-44.44%	5
Nursing/ Midwifery other	3	3		2	3	-3	+3	+1	+0	+0	0.00%	3
<b>Nursing &amp; Midwifery</b>	<b>177</b>	<b>166</b>	<b>124</b>	<b>121</b>	<b>122</b>	<b>-42</b>	<b>-1</b>	<b>+2</b>	<b>-43</b>	<b>-55</b>	<b>-26.11%</b>	<b>131</b>
Dietitians	1	1	1	1	1	+1	+0	+0	+1	+1	100.00%	1
Occupational Therapists	14	16	14	14	13	-2	-1	-1	-4	-2	-22.33%	17
Physiotherapists	1	1	0	0	0	-1	+0	+0	-1	-1	-81.08%	1
Speech & Language Therapists	16	10	9	9	9	-2	+0	+0	-1	-6	-12.93%	12
Therapy Professions	31	28	24	24	23	-4	-1	-1	-5	-9	-18.99%	31
Social Care	25	28	24	23	22	-4	-1	-1	-6	-3	-20.16%	26
Social Workers	20	20	20	17	17	+0	-4	-0	-3	-3	-16.82%	18
Psychologists	16	25	27	26	25	+2	-2	-0	+1	+9	2.36%	31
Pharmacy	2	2	2	2	2	+0	+0	+0	+0	+1	27.78%	3
H&SC, Other	5	0	7	4	3	+7	-4	-1	+3	-1	616.67%	4
<b>Health &amp; Social Care Professionals</b>	<b>99</b>	<b>103</b>	<b>104</b>	<b>96</b>	<b>93</b>	<b>+1</b>	<b>-12</b>	<b>-4</b>	<b>-10</b>	<b>-6</b>	<b>-10.01%</b>	<b>113</b>
Management (VIII & above)	2	2	3	3	3	+1	+0	+0	+1	+1	50.00%	3
Administrative/ Supervisory (V to VII)	21	23	20	23	23	-3	+3	-0	-0	+2	-0.68%	27
Clerical (III & IV)	45	36	40	41	41	+4	+1	+0	+5	-4	12.37%	49
<b>Management &amp; Administrative</b>	<b>68</b>	<b>62</b>	<b>64</b>	<b>67</b>	<b>67</b>	<b>+2</b>	<b>+4</b>	<b>+0</b>	<b>+5</b>	<b>-1</b>	<b>8.64%</b>	<b>79</b>
Support	38	33	30	27	27	-3	-3	-0	-6	-11	-17.65%	38
Maintenance/ Technical	6	6	7	5	6	+1	-1	+1	+0	+0	3.50%	7
<b>General Support</b>	<b>44</b>	<b>39</b>	<b>37</b>	<b>32</b>	<b>33</b>	<b>-2</b>	<b>-4</b>	<b>+1</b>	<b>-6</b>	<b>-10</b>	<b>-14.40%</b>	<b>45</b>
Health Care Assistants	6	6	8	11	11	+2	+3	+0	+5	+5	90.64%	11
Care, other	3	3	4	3	3	+0	-0	-0	+0	+1	0.89%	4
<b>Patient &amp; Client Care</b>	<b>9</b>	<b>9</b>	<b>12</b>	<b>14</b>	<b>14</b>	<b>+3</b>	<b>+3</b>	<b>+0</b>	<b>+5</b>	<b>+6</b>	<b>57.55%</b>	<b>15</b>



## Mental Health Employment Report by Grade Group: SEP 2024

### CHO 1

SEP 2024	WTE DEC 2019	WTE DEC 2022	WTE DEC 2023	WTE AUG 2024	WTE SEP 2024	WTE Change 2023	WTE Change 2024	WTE Change AUG 2024	WTE Change Dec 2022 to SEP 2024	WTE Change Dec 2019 to SEP 2024	% WTE Change Dec 2022 to SEP 2024	No. SEP 2024
<b>Total CHO 1</b>	<b>953</b>	<b>1024</b>	<b>1050</b>	<b>1032</b>	<b>1032</b>	<b>+26</b>	<b>-18</b>	<b>-1</b>	<b>+8</b>	<b>+79</b>	<b>+0.8%</b>	<b>1,125</b>
Consultants	31	34	36	41	40	+2	+4	-1	+6	+9	+18.6%	43
Registrars	24	35	39	39	39	+4	+0	-0	+4	+15	+12.4%	41
SHO/ Interns	25	21	23	26	25	+2	+2	-0	+5	+0	+21.8%	26
<b>Medical &amp; Dental</b>	<b>81</b>	<b>89</b>	<b>98</b>	<b>106</b>	<b>104</b>	<b>+9</b>	<b>+6</b>	<b>-2</b>	<b>+15</b>	<b>+24</b>	<b>+16.9%</b>	<b>110</b>
Nurse/ Midwife Manager	117	118	120	110	112	+2	-8	+1	-6	-5	-5.0%	117
Nurse/ Midwife Specialist & AN/MP	67	91	101	101	101	+9	+0	-1	+9	+33	+10.2%	108
Staff Nurse/ Staff Midwife	297	294	288	286	286	-6	-2	+0	-8	-12	-2.7%	306
<i>Nursing/ Midwifery awaiting registration</i>		3	5			+2	-5	-5	-3		-100.0%	
<i>Pre-registration Nurse/ Midwife Intern</i>			2	3	13	+1	+10	+10	+11	+13	+594.4%	25
Nursing/ Midwifery Student		5	8	13	13	+3	+5	+0	+8	+13	+161.5%	25
Nursing/ Midwifery other		2	2	1	2	-0	-0	+0	-0	+2	-20.6%	2
<b>Nursing &amp; Midwifery</b>	<b>482</b>	<b>510</b>	<b>518</b>	<b>511</b>	<b>513</b>	<b>+8</b>	<b>-5</b>	<b>+1</b>	<b>+3</b>	<b>+31</b>	<b>+0.6%</b>	<b>558</b>
Therapy Professions	36	40	41	35	35	+1	-6	+0	-5	-0	-12.4%	41
Social Care	4	4	2	3	4	-1	+1	+1	-0	-0	-7.1%	4
Social Workers	39	48	48	49	48	+0	+0	-1	+0	+9	+1.0%	53
Psychologists	21	25	28	27	27	+3	-1	-0	+2	+6	+9.2%	29
Pharmacy	1	1	1	1	1	+0	-0	+0	+0	+0	+4.9%	1
H&SC, Other	13	18	20	22	23	+1	+3	+1	+4	+10	+23.5%	26
<b>Health &amp; Social Care Professionals</b>	<b>113</b>	<b>136</b>	<b>140</b>	<b>137</b>	<b>138</b>	<b>+4</b>	<b>-2</b>	<b>+1</b>	<b>+2</b>	<b>+25</b>	<b>+1.3%</b>	<b>154</b>
Management (VIII & above)	6	9	7	7	7	-2	+0	+0	-2	+1	-22.4%	7
Administrative/ Supervisory (V to VII)	30	30	34	34	35	+4	+0	+1	+4	+5	+14.4%	37
Clerical (III & IV)	85	89	95	89	87	+5	-8	-2	-3	+1	-2.9%	95
<b>Management &amp; Administrative</b>	<b>121</b>	<b>128</b>	<b>135</b>	<b>129</b>	<b>128</b>	<b>+7</b>	<b>-8</b>	<b>-1</b>	<b>-0</b>	<b>+7</b>	<b>-0.2%</b>	<b>139</b>
Support	62	58	60	53	54	+2	-6	+1	-4	-8	-7.1%	59
Maintenance/ Technical	17	16	16	15	15	-1	-0	-0	-1	-2	-6.5%	16
<b>General Support</b>	<b>79</b>	<b>74</b>	<b>76</b>	<b>69</b>	<b>69</b>	<b>+2</b>	<b>-7</b>	<b>+0</b>	<b>-5</b>	<b>-10</b>	<b>-7.0%</b>	<b>75</b>
Health Care Assistants	66	75	74	72	72	-1	-2	-0	-3	+5	-3.9%	79
Care, other	11	12	10	8	8	-2	-1	+0	-3	-2	-28.5%	10
<b>Patient &amp; Client Care</b>	<b>77</b>	<b>86</b>	<b>83</b>	<b>80</b>	<b>80</b>	<b>-3</b>	<b>-3</b>	<b>-0</b>	<b>-6</b>	<b>+3</b>	<b>-7.3%</b>	<b>89</b>



## Mental Health Employment Report by Grade Group: SEP 2024

CHO 2

SEP 2024	WTE DEC 2019	WTE DEC 2022	WTE DEC 2023	WTE AUG 2024	WTE SEP 2024	WTE Change 2023	WTE Change 2024	WTE Change AUG 2024	WTE Change Dec 2022 to SEP 2024	WTE Change Dec 2019 to SEP 2024	% WTE Change Dec 2022 to SEP 2024	No. SEP 2024
<b>Total CHO 2</b>	<b>1308</b>	<b>1329</b>	<b>1361</b>	<b>1335</b>	<b>1331</b>	<b>+31</b>	<b>-29</b>	<b>-4</b>	<b>+2</b>	<b>+23</b>	<b>+0.2%</b>	<b>1,459</b>
Consultants	38	37	43	43	44	+6	+1	+1	+7	+6	+19.2%	50
Registrars	33	37	42	44	45	+5	+3	+1	+8	+12	+22.0%	46
SHO/ Interns	35	39	37	37	38	-2	+1	+0	-1	+3	-3.4%	39
Medical/ Dental, other	1	1				-1			-1	-1	-100.0%	
<b>Medical &amp; Dental</b>	<b>107</b>	<b>114</b>	<b>122</b>	<b>125</b>	<b>126</b>	<b>+8</b>	<b>+5</b>	<b>+1</b>	<b>+13</b>	<b>+20</b>	<b>+11.3%</b>	<b>135</b>
Nurse/ Midwife Manager	146	142	151	144	143	+8	-7	-1	+1	-2	+0.9%	149
Nurse/ Midwife Specialist & AN/MP	67	88	105	105	103	+18	-3	-2	+15	+35	+17.1%	108
Staff Nurse/ Staff Midwife	357	353	326	325	323	-27	-3	-3	-30	-35	-8.6%	351
<i>Nursing/ Midwifery awaiting registration</i>	5	7	15		1	+8	-14	-14	-6	-4	-86.1%	1
<i>Pre-registration Nurse/ Midwife Intern</i>	0	4		22	21	-4	+21	+21	+17	+21	+429.9%	43
Nursing/ Midwifery Student	5	11	15	22	22	+4	+7	+0	+11	+18	+103.0%	44
Nursing/ Midwifery other	2	4	4	5	5	+0	+1	+0	+1	+3	+24.0%	5
<b>Nursing &amp; Midwifery</b>	<b>577</b>	<b>598</b>	<b>601</b>	<b>602</b>	<b>596</b>	<b>+3</b>	<b>-5</b>	<b>-5</b>	<b>-2</b>	<b>+19</b>	<b>-0.3%</b>	<b>657</b>
Therapy Professions	45	55	57	55	54	+2	-3	-1	-0	+9	-0.9%	61
Social Care	15	14	13	13	12	-1	-1	-0	-2	-2	-11.2%	13
Social Workers	41	44	47	49	50	+3	+3	+0	+6	+9	+13.0%	54
Psychologists	34	37	36	33	31	-1	-4	-1	-6	-2	-15.5%	36
Pharmacy	3	3	4	4	4	+1	+0	+0	+1	+1	+46.8%	5
H&SC, Other	3	3	14	13	13	+11	-1	-0	+10	+10	+368.9%	16
<b>Health &amp; Social Care Professionals</b>	<b>140</b>	<b>155</b>	<b>170</b>	<b>166</b>	<b>164</b>	<b>+16</b>	<b>-6</b>	<b>-2</b>	<b>+10</b>	<b>+24</b>	<b>+6.2%</b>	<b>185</b>
Management (VIII & above)	5	3	3	4	4	+0	+1	+0	+1	-1	+33.3%	4
Administrative/ Supervisory (V to VII)	24	25	31	35	35	+6	+4	+1	+10	+12	+39.6%	36
Clerical (III & IV)	109	98	111	102	102	+13	-9	-0	+4	-7	+4.2%	114
<b>Management &amp; Administrative</b>	<b>138</b>	<b>126</b>	<b>145</b>	<b>141</b>	<b>141</b>	<b>+19</b>	<b>-4</b>	<b>+0</b>	<b>+15</b>	<b>+3</b>	<b>+12.0%</b>	<b>154</b>
Support	36	27	21	18	18	-5	-3	+0	-9	-18	-33.1%	20
Maintenance/ Technical	27	36	34	34	34	-2	-0	+0	-2	+7	-5.5%	34
<b>General Support</b>	<b>63</b>	<b>62</b>	<b>56</b>	<b>52</b>	<b>52</b>	<b>-7</b>	<b>-4</b>	<b>+0</b>	<b>-11</b>	<b>-11</b>	<b>-17.3%</b>	<b>54</b>
Health Care Assistants	215	202	199	192	193	-3	-6	+1	-9	-22	-4.5%	204
Care, other	69	73	68	58	59	-5	-9	+1	-14	-10	-19.2%	70
<b>Patient &amp; Client Care</b>	<b>284</b>	<b>275</b>	<b>267</b>	<b>249</b>	<b>252</b>	<b>-8</b>	<b>-15</b>	<b>+2</b>	<b>-23</b>	<b>-32</b>	<b>-8.4%</b>	<b>274</b>



## Mental Health Employment Report by Grade Group: SEP 2024

CHO 3

SEP 2024	WTE DEC 2019	WTE DEC 2022	WTE DEC 2023	WTE AUG 2024	WTE SEP 2024	WTE Change 2023	WTE Change 2024	WTE Change AUG 2024	WTE Change Dec 2022 to SEP 2024	WTE Change Dec 2019 to SEP 2024	% WTE Change Dec 2022 to SEP 2024	No. SEP 2024
<b>Total CHO 3</b>	<b>795</b>	<b>814</b>	<b>852</b>	<b>829</b>	<b>832</b>	<b>+37</b>	<b>-19</b>	<b>+3</b>	<b>+18</b>	<b>+37</b>	<b>+2.2%</b>	<b>912</b>
Consultants	23	29	30	28	29	+1	-1	+1	-0	+6	-0.7%	31
Registrars	18	15	22	26	29	+7	+7	+2	+13	+11	+86.5%	29
SHO/ Interns	19	33	19	13	11	-14	-8	-2	-22	-8	-67.0%	11
<b>Medical &amp; Dental</b>	<b>60</b>	<b>78</b>	<b>71</b>	<b>67</b>	<b>68</b>	<b>-7</b>	<b>-3</b>	<b>+1</b>	<b>-9</b>	<b>+8</b>	<b>-12.0%</b>	<b>71</b>
Nurse/ Midwife Manager	88	87	91	86	87	+4	-4	+1	-0	-1	-0.5%	91
Nurse/ Midwife Specialist & AN/MP	39	44	52	49	49	+8	-3	-0	+5	+10	+10.3%	55
Staff Nurse/ Staff Midwife	245	243	254	244	242	+11	-11	-1	-0	-3	-0.2%	267
<i>Pre-registration Nurse/ Midwife Intern</i>	9	4	1	12	22	-3	+21	+21	+18	+13	+420.3%	27
Nursing/ Midwifery Student	9	4	1	12	22	-3	+21	+10	+18	+13	+420.3%	27
Nursing/ Midwifery other			1	1	0	+0	-1	-0	-1		-100.0%	
<b>Nursing &amp; Midwifery</b>	<b>381</b>	<b>380</b>	<b>399</b>	<b>391</b>	<b>400</b>	<b>+19</b>	<b>+2</b>	<b>+9</b>	<b>+21</b>	<b>+19</b>	<b>+5.5%</b>	<b>440</b>
Therapy Professions	26	30	30	28	28	-0	-2	-0	-2	+2	-7.6%	32
Social Care	3	2	1	1	1	-1	+0	+0	-1	-2	-47.5%	1
Social Workers	25	28	26	24	25	-2	-1	+0	-3	-1	-11.4%	27
Psychologists	92	93	91	89	85	-3	-6	-4	-8	-7	-8.9%	98
Pharmacy	3	3	3	3	3	-0	+0	+0	+0	+0	+1.1%	3
H&SC, Other	10	10	11	12	11	+1	+0	-1	+2	+2	+16.5%	12
<b>Health &amp; Social Care Professionals</b>	<b>159</b>	<b>166</b>	<b>161</b>	<b>158</b>	<b>153</b>	<b>-5</b>	<b>-8</b>	<b>-5</b>	<b>-13</b>	<b>-6</b>	<b>-7.9%</b>	<b>173</b>
Management (VIII & above)	2	4	4	4	4	+0	+0	+0	+0	+2	+1.3%	4
Administrative/ Supervisory (V to VII)	17	16	17	16	16	+1	-2	-1	-0	-1	-2.4%	16
Clerical (III & IV)	56	50	60	55	56	+9	-3	+1	+6	+1	+12.3%	61
<b>Management &amp; Administrative</b>	<b>75</b>	<b>70</b>	<b>81</b>	<b>75</b>	<b>76</b>	<b>+11</b>	<b>-5</b>	<b>+1</b>	<b>+6</b>	<b>+1</b>	<b>+8.4%</b>	<b>81</b>
Support	32	30	32	32	32	+1	+0	-0	+1	-1	+4.5%	34
Maintenance/ Technical	11	7	9	10	10	+2	+1	-0	+3	-1	+44.3%	10
<b>General Support</b>	<b>43</b>	<b>37</b>	<b>41</b>	<b>42</b>	<b>42</b>	<b>+3</b>	<b>+1</b>	<b>-0</b>	<b>+4</b>	<b>-2</b>	<b>+11.9%</b>	<b>44</b>
Health Care Assistants	75	82	97	93	91	+16	-6	-2	+9	+16	+11.5%	100
Care, other	2	2	2	2	2	+0	-0	-0	-0	+1	-2.9%	3
<b>Patient &amp; Client Care</b>	<b>77</b>	<b>84</b>	<b>100</b>	<b>96</b>	<b>93</b>	<b>+16</b>	<b>-6</b>	<b>-2</b>	<b>+9</b>	<b>+16</b>	<b>+11.1%</b>	<b>103</b>



## Mental Health Employment Report by Grade Group: SEP 2024

CHO 4

SEP 2024	WTE DEC 2019	WTE DEC 2022	WTE DEC 2023	WTE AUG 2024	WTE SEP 2024	WTE Change 2023	WTE Change 2024	WTE Change AUG 2024	WTE Change Dec 2022 to SEP 2024	WTE Change Dec 2019 to SEP 2024	% WTE Change Dec 2022 to SEP 2024	No. SEP 2024
<b>Total CHO 4</b>	<b>1499</b>	<b>1562</b>	<b>1615</b>	<b>1563</b>	<b>1566</b>	<b>+54</b>	<b>-49</b>	<b>+4</b>	<b>+5</b>	<b>+67</b>	<b>+0.3%</b>	<b>1,756</b>
Consultants	50	60	65	68	70	+4	+5	+2	+10	+20	+16.0%	80
Registrars	46	56	51	50	50	-5	-1	-0	-6	+4	-11.4%	51
SHO/ Interns	31	42	55	54	58	+12	+4	+5	+16	+27	+37.8%	62
Medical/ Dental, other	2	1	1	1	1	+0	+0	+0	+0	-1	+1.0%	4
<b>Medical &amp; Dental</b>	<b>129</b>	<b>160</b>	<b>171</b>	<b>172</b>	<b>179</b>	<b>+11</b>	<b>+8</b>	<b>+7</b>	<b>+19</b>	<b>+51</b>	<b>+12.0%</b>	<b>197</b>
Nurse/ Midwife Manager	171	207	201	204	201	-6	+0	-3	-6	+29	-3.0%	214
Nurse/ Midwife Specialist & AN/MP	60	72	90	84	84	+17	-5	+0	+12	+24	+16.7%	91
Staff Nurse/ Staff Midwife	505	479	484	449	446	+5	-38	-3	-33	-60	-7.0%	482
<i>Nursing/ Midwifery awaiting registration</i>	30		1	1		+1	-1	-1		-30	-100.0%	
<i>Post-registration Nurse/ Midwife Student</i>	1									-1	-100.0%	
<i>Pre-registration Nurse/ Midwife Intern</i>	3	7	1	23	22	-6	+22	+22	+16	+19	+235.9%	45
Nursing/ Midwifery Student	34	7	2	24	22	-5	+21	-1	+16	-11	+235.9%	45
Nursing/ Midwifery other				2	2		+2	+0	+2	+2	-100.0%	2
<b>Nursing &amp; Midwifery</b>	<b>770</b>	<b>765</b>	<b>776</b>	<b>762</b>	<b>755</b>	<b>+11</b>	<b>-21</b>	<b>-7</b>	<b>-10</b>	<b>-15</b>	<b>-1.3%</b>	<b>834</b>
Therapy Professions	74	79	88	81	82	+9	-6	+1	+3	+8	+3.7%	95
Social Care	4	6	3	3	4	-3	+1	+1	-2	+0	-31.4%	5
Social Workers	53	73	74	67	69	+1	-5	+2	-4	+16	-5.0%	81
Psychologists	83	96	98	90	92	+2	-6	+2	-4	+9	-4.0%	115
Pharmacy	2	2	1	1	1	-1	-1	+0	-2	-2	-74.6%	1
H&SC, Other	11	18	19	18	18	+1	-1	-0	-0	+7	-0.5%	22
<b>Health &amp; Social Care Professionals</b>	<b>227</b>	<b>273</b>	<b>283</b>	<b>260</b>	<b>265</b>	<b>+9</b>	<b>-17</b>	<b>+5</b>	<b>-8</b>	<b>+38</b>	<b>-3.0%</b>	<b>319</b>
Management (VIII & above)	1	3	3	3	2	-0	-1	-1	-1	+1	-40.0%	2
Administrative/ Supervisory (V to VII)	22	26	33	30	30	+7	-3	-0	+4	+8	+15.1%	32
Clerical (III & IV)	87	87	106	107	105	+19	-1	-2	+18	+17	+20.7%	119
<b>Management &amp; Administrative</b>	<b>111</b>	<b>116</b>	<b>142</b>	<b>140</b>	<b>137</b>	<b>+26</b>	<b>-5</b>	<b>-4</b>	<b>+21</b>	<b>+26</b>	<b>+17.9%</b>	<b>153</b>
Support	81	75	65	59	59	-10	-6	-0	-16	-22	-21.5%	66
Maintenance/ Technical	6	5	4	4	4	-1	+0	+0	-1	-2	-24.7%	4
<b>General Support</b>	<b>87</b>	<b>80</b>	<b>68</b>	<b>63</b>	<b>62</b>	<b>-11</b>	<b>-6</b>	<b>-0</b>	<b>-17</b>	<b>-24</b>	<b>-21.7%</b>	<b>70</b>
Health Care Assistants	168	162	169	160	162	+7	-8	+2	-0	-7	-0.3%	171
Care, other	7	5	6	5	6	+0	+0	+0	+0	-2	+8.2%	12
<b>Patient &amp; Client Care</b>	<b>176</b>	<b>167</b>	<b>175</b>	<b>165</b>	<b>167</b>	<b>+8</b>	<b>-8</b>	<b>+2</b>	<b>+0</b>	<b>-8</b>	<b>+0.0%</b>	<b>183</b>



## Mental Health Employment Report by Grade Group: SEP 2024

CHO 5

SEP 2024	WTE DEC 2019	WTE DEC 2022	WTE DEC 2023	WTE AUG 2024	WTE SEP 2024	WTE Change 2023	WTE Change 2024	WTE Change AUG 2024	WTE Change Dec 2022 to SEP 2024	WTE Change Dec 2019 to SEP 2024	% WTE Change Dec 2022 to SEP 2024	No. SEP 2024
<b>Total CHO 5</b>	<b>1177</b>	<b>1224</b>	<b>1325</b>	<b>1309</b>	<b>1302</b>	<b>+101</b>	<b>-23</b>	<b>-7</b>	<b>+77</b>	<b>+124</b>	<b>+6.3%</b>	<b>1,445</b>
Consultants	26	33	36	35	35	+3	-1	+0	+2	+9	+4.6%	37
Registrars	10	12	18	21	18	+6	+1	-2	+7	+8	+55.6%	19
SHO/ Interns	32	32	34	38	39	+1	+6	+1	+7	+7	+21.8%	40
Medical/ Dental, other	2	2	2	2	2	+0	+0	+0	+0	+0	+2.6%	2
<b>Medical &amp; Dental</b>	<b>70</b>	<b>80</b>	<b>90</b>	<b>96</b>	<b>95</b>	<b>+10</b>	<b>+5</b>	<b>-1</b>	<b>+15</b>	<b>+24</b>	<b>+19.2%</b>	<b>98</b>
Nurse/ Midwife Manager	171	175	155	154	151	-21	-4	-3	-24	-20	-13.9%	157
Nurse/ Midwife Specialist & AN/MP	43	68	91	87	83	+23	-7	-4	+15	+40	+22.5%	94
Staff Nurse/ Staff Midwife	412	398	393	396	396	-5	+3	+0	-2	-16	-0.5%	444
<i>Nursing/ Midwifery awaiting registration</i>		6	19		20	+13	+1	+1	+14	+20	+258.6%	27
<i>Pre-registration Nurse/ Midwife Intern</i>	1	1	1	19	6	+0	+5	+5	+5	+5	+509.2%	11
Nursing/ Midwifery Student	1	7	20	19	26	+14	+6	+7	+19	+25	+295.9%	38
Nursing/ Midwifery other	4	4	5	5	5	+1	-0	+0	+1	+1	+36.9%	5
<b>Nursing &amp; Midwifery</b>	<b>631</b>	<b>651</b>	<b>663</b>	<b>661</b>	<b>661</b>	<b>+12</b>	<b>-2</b>	<b>+0</b>	<b>+10</b>	<b>+30</b>	<b>+1.5%</b>	<b>738</b>
Therapy Professions	38	34	32	32	32	-2	-0	-0	-2	-6	-5.5%	38
Social Care	5	4	4	5	5	+1	+0	+0	+1	-0	+27.5%	5
Social Workers	28	29	34	31	31	+5	-3	+0	+2	+3	+8.0%	35
Psychologists	21	27	33	33	31	+6	-2	-1	+4	+10	+16.0%	38
H&SC, Other	9	23	21	19	19	-2	-2	-0	-4	+10	-17.3%	20
<b>Health &amp; Social Care Professionals</b>	<b>101</b>	<b>117</b>	<b>125</b>	<b>120</b>	<b>118</b>	<b>+8</b>	<b>-6</b>	<b>-1</b>	<b>+2</b>	<b>+17</b>	<b>+1.5%</b>	<b>136</b>
Management (VIII & above)	4	6	5	5	5	-1	-0	-0	-1	+1	-12.7%	5
Administrative/ Supervisory (V to VII)	21	23	30	29	28	+7	-2	-1	+5	+7	+20.0%	29
Clerical (III & IV)	74	74	99	92	92	+25	-7	+0	+17	+18	+23.3%	100
<b>Management &amp; Administrative</b>	<b>99</b>	<b>104</b>	<b>134</b>	<b>126</b>	<b>125</b>	<b>+31</b>	<b>-9</b>	<b>-1</b>	<b>+21</b>	<b>+26</b>	<b>+20.6%</b>	<b>134</b>
Support	171	175	183	177	176	+9	-8	-1	+1	+5	+0.7%	200
Maintenance/ Technical	19	14	13	13	12	-1	-1	-1	-2	-7	-12.7%	13
<b>General Support</b>	<b>190</b>	<b>189</b>	<b>197</b>	<b>190</b>	<b>188</b>	<b>+8</b>	<b>-9</b>	<b>-2</b>	<b>-1</b>	<b>-2</b>	<b>-0.3%</b>	<b>213</b>
Health Care Assistants	73	73	102	100	98	+28	-4	-2	+24	+25	+33.4%	104
Care, other	13	12	15	18	17	+3	+2	-1	+5	+4	+43.2%	22
<b>Patient &amp; Client Care</b>	<b>85</b>	<b>85</b>	<b>117</b>	<b>117</b>	<b>115</b>	<b>+32</b>	<b>-2</b>	<b>-3</b>	<b>+30</b>	<b>+29</b>	<b>+34.8%</b>	<b>126</b>



## Mental Health Employment Report by Grade Group: SEP 2024

CHO 6

SEP 2024	WTE DEC 2019	WTE DEC 2022	WTE DEC 2023	WTE AUG 2024	WTE SEP 2024	WTE Change 2023	WTE Change 2024	WTE Change AUG 2024	WTE Change Dec 2022 to SEP 2024	WTE Change Dec 2019 to SEP 2024	% WTE Change Dec 2022 to SEP 2024	No. SEP 2024
<b>Total CHO 6</b>	<b>593</b>	<b>650</b>	<b>683</b>	<b>681</b>	<b>671</b>	<b>+33</b>	<b>-12</b>	<b>-11</b>	<b>+21</b>	<b>+78</b>	<b>+3.3%</b>	<b>758</b>
Consultants	36	45	51	51	52	+5	+1	+0	+6	+16	+14.0%	61
Registrars	22	30	28	30	31	-2	+2	+1	+1	+9	+3.1%	35
SHO/ Interns	9	9	11	12	11	+2	+0	-1	+2	+2	+22.6%	11
<b>Medical &amp; Dental</b>	<b>67</b>	<b>84</b>	<b>90</b>	<b>93</b>	<b>93</b>	<b>+6</b>	<b>+3</b>	<b>-0</b>	<b>+9</b>	<b>+26</b>	<b>+11.1%</b>	<b>107</b>
Nurse/ Midwife Manager	76	75	73	62	61	-2	-12	-0	-13	-15	-17.8%	64
Nurse/ Midwife Specialist & AN/MP	14	27	34	55	54	+7	+20	-1	+27	+40	+101.0%	59
Staff Nurse/ Staff Midwife	139	151	144	137	137	-7	-8	+0	-15	-3	-9.8%	147
<i>Nursing/ Midwifery awaiting registration</i>					1		+1	+1	+1	+1	-100.0%	3
<i>Pre-registration Nurse/ Midwife Intern</i>				7	4		+4	+4	+4	+4	-100.0%	11
Nursing/ Midwifery Student				7	5		+5	-1	+5	+5	-100.0%	14
Nursing/ Midwifery other	2	4	3	4	3	-1	+0	-0	-1	+1	-13.6%	4
<b>Nursing &amp; Midwifery</b>	<b>231</b>	<b>257</b>	<b>254</b>	<b>264</b>	<b>261</b>	<b>-3</b>	<b>+7</b>	<b>-3</b>	<b>+4</b>	<b>+29</b>	<b>+1.5%</b>	<b>288</b>
Therapy Professions	43	41	43	39	39	+2	-4	+0	-2	-4	-4.7%	48
Social Care	26	28	24	23	22	-4	-1	-1	-6	-4	-20.2%	26
Social Workers	30	36	37	33	32	+0	-4	-1	-4	+2	-11.4%	35
Psychologists	22	38	43	39	40	+6	-3	+1	+2	+18	+6.2%	48
H&SC, Other	9	6	16	16	15	+10	-1	-1	+9	+7	+137.7%	17
<b>Health &amp; Social Care Professionals</b>	<b>130</b>	<b>150</b>	<b>163</b>	<b>151</b>	<b>149</b>	<b>+13</b>	<b>-14</b>	<b>-2</b>	<b>-1</b>	<b>+19</b>	<b>-0.4%</b>	<b>174</b>
Management (VIII & above)	3	5	5	5	5	+0	+0	+0	+0	+2	+0.6%	5
Administrative/ Supervisory (V to VII)	27	31	27	26	25	-4	-2	-1	-6	-2	-18.5%	29
Clerical (III & IV)	42	29	41	41	40	+12	-1	-1	+11	-2	+38.6%	48
<b>Management &amp; Administrative</b>	<b>72</b>	<b>65</b>	<b>73</b>	<b>73</b>	<b>70</b>	<b>+8</b>	<b>-3</b>	<b>-3</b>	<b>+6</b>	<b>-1</b>	<b>+8.5%</b>	<b>82</b>
Support	36	29	28	23	23	-1	-6	+0	-7	-14	-22.6%	27
Maintenance/ Technical	6	5	6	4	4	+1	-2	+0	-1	-2	-15.5%	5
<b>General Support</b>	<b>42</b>	<b>34</b>	<b>34</b>	<b>27</b>	<b>27</b>	<b>+0</b>	<b>-8</b>	<b>+0</b>	<b>-7</b>	<b>-16</b>	<b>-21.6%</b>	<b>32</b>
Health Care Assistants	46	54	62	68	65	+8	+3	-3	+11	+20	+21.5%	68
Care, other	5	7	7	6	6	+1	-1	-0	-1	+1	-13.7%	7
<b>Patient &amp; Client Care</b>	<b>51</b>	<b>60</b>	<b>69</b>	<b>74</b>	<b>71</b>	<b>+9</b>	<b>+2</b>	<b>-3</b>	<b>+11</b>	<b>+20</b>	<b>+17.5%</b>	<b>75</b>



## Mental Health Employment Report by Grade Group: SEP 2024

CHO 7

SEP 2024	WTE DEC 2019	WTE DEC 2022	WTE DEC 2023	WTE AUG 2024	WTE SEP 2024	WTE Change 2023	WTE Change 2024	WTE Change AUG 2024	WTE Change Dec 2022 to SEP 2024	WTE Change Dec 2019 to SEP 2024	% WTE Change Dec 2022 to SEP 2024	No. SEP 2024
<b>Total CHO 7</b>	<b>835</b>	<b>879</b>	<b>912</b>	<b>926</b>	<b>929</b>	<b>+34</b>	<b>+17</b>	<b>+3</b>	<b>+50</b>	<b>+94</b>	<b>+5.7%</b>	<b>1,011</b>
Consultants	48	52	57	65	65	+4	+8	-1	+12	+17	+23.7%	67
Registrars	46	55	44	47	48	-11	+4	+1	-7	+2	-12.5%	50
SHO/ Interns	21	26	28	29	29	+3	+1	+0	+3	+8	+13.3%	29
<b>Medical &amp; Dental</b>	<b>115</b>	<b>133</b>	<b>129</b>	<b>141</b>	<b>142</b>	<b>-4</b>	<b>+13</b>	<b>+1</b>	<b>+9</b>	<b>+27</b>	<b>+6.7%</b>	<b>146</b>
Nurse/ Midwife Manager	117	109	101	104	102	-8	+1	-1	-7	-14	-6.3%	107
Nurse/ Midwife Specialist & AN/MP	40	56	72	70	68	+16	-3	-2	+12	+28	+22.2%	72
Staff Nurse/ Staff Midwife	194	205	199	212	213	-5	+14	+1	+8	+19	+4.1%	234
<i>Nursing/ Midwifery awaiting registration</i>	10	1	7		14	+6	+8	+8	+13	+4	+1,315.2%	17
<i>Pre-registration Nurse/ Midwife Intern</i>	1	0		14	6	-0	+6	+6	+5	+4	+5,400.0%	11
Nursing/ Midwifery Student	11	1	7	14	20	+5	+13	+6	+18	+8	+1,689.9%	28
Nursing/ Midwifery other	8	6	5	7	7	-1	+2	-0	+1	-1	+12.1%	8
<b>Nursing &amp; Midwifery</b>	<b>370</b>	<b>377</b>	<b>383</b>	<b>407</b>	<b>410</b>	<b>+6</b>	<b>+27</b>	<b>+3</b>	<b>+33</b>	<b>+40</b>	<b>+8.8%</b>	<b>449</b>
Therapy Professions	48	51	57	54	54	+6	-2	+0	+3	+6	+6.4%	61
Social Care	8	7	7	5	5	+0	-2	-0	-2	-3	-24.9%	6
Social Workers	34	38	44	41	40	+6	-4	-0	+2	+6	+4.8%	44
Psychologists	31	35	37	37	36	+2	-1	-1	+1	+5	+3.3%	41
Pharmacy	1	0	1	1	1	+1	-0	+0	+1	-0	+300.0%	1
H&SC, Other	18	19	19	20	19	-0	+1	-0	+1	+1	+3.2%	22
<b>Health &amp; Social Care Professionals</b>	<b>140</b>	<b>150</b>	<b>165</b>	<b>157</b>	<b>155</b>	<b>+15</b>	<b>-9</b>	<b>-2</b>	<b>+6</b>	<b>+15</b>	<b>+3.8%</b>	<b>175</b>
Management (VIII & above)	3	5	4	4	5	-1	+1	+1	+0	+2	+2.5%	5
Administrative/ Supervisory (V to VII)	16	22	26	23	23	+3	-2	+1	+1	+8	+4.0%	25
Clerical (III & IV)	47	55	64	57	57	+9	-7	+0	+1	+10	+2.2%	63
<b>Management &amp; Administrative</b>	<b>65</b>	<b>83</b>	<b>94</b>	<b>83</b>	<b>85</b>	<b>+11</b>	<b>-9</b>	<b>+2</b>	<b>+2</b>	<b>+20</b>	<b>+2.7%</b>	<b>93</b>
Support	18	16	13	13	13	-4	+1	+0	-3	-4	-17.0%	15
Maintenance/ Technical	2	2	1	1	1	-1	+0	+0	-1	-1	-48.5%	1
<b>General Support</b>	<b>20</b>	<b>18</b>	<b>14</b>	<b>14</b>	<b>14</b>	<b>-4</b>	<b>+1</b>	<b>+0</b>	<b>-4</b>	<b>-5</b>	<b>-20.4%</b>	<b>16</b>
Health Care Assistants	33	31	36	36	35	+6	-1	-1	+4	+1	+14.1%	37
Care, other	92	88	92	87	87	+4	-4	+0	-0	-5	-0.3%	95
<b>Patient &amp; Client Care</b>	<b>125</b>	<b>118</b>	<b>128</b>	<b>123</b>	<b>122</b>	<b>+9</b>	<b>-5</b>	<b>-1</b>	<b>+4</b>	<b>-3</b>	<b>+3.4%</b>	<b>132</b>



## Mental Health Employment Report by Grade Group: SEP 2024

CHO 8

SEP 2024	WTE DEC 2019	WTE DEC 2022	WTE DEC 2023	WTE AUG 2024	WTE SEP 2024	WTE Change 2023	WTE Change 2024	WTE Change AUG 2024	WTE Change Dec 2022 to SEP 2024	WTE Change Dec 2019 to SEP 2024	% WTE Change Dec 2022 to SEP 2024	No. SEP 2024
<b>Total CHO 8</b>	<b>1098</b>	<b>1091</b>	<b>1123</b>	<b>1109</b>	<b>1113</b>	<b>+32</b>	<b>-9</b>	<b>+4</b>	<b>+23</b>	<b>+15</b>	<b>+2.1%</b>	<b>1,215</b>
Consultants	35	36	38	40	41	+2	+3	+1	+5	+6	+12.6%	43
Registrars	26	29	31	35	36	+1	+6	+2	+7	+11	+24.8%	38
SHO/ Interns	36	29	36	35	34	+7	-2	-1	+5	-2	+17.5%	35
<b>Medical &amp; Dental</b>	<b>97</b>	<b>94</b>	<b>105</b>	<b>110</b>	<b>111</b>	<b>+10</b>	<b>+6</b>	<b>+2</b>	<b>+17</b>	<b>+14</b>	<b>+17.9%</b>	<b>116</b>
Nurse/ Midwife Manager	121	114	118	103	100	+4	-18	-3	-14	-21	-12.6%	104
Nurse/ Midwife Specialist & AN/MP	56	75	81	85	85	+7	+4	+1	+11	+29	+14.2%	92
Staff Nurse/ Staff Midwife	332	323	322	307	304	-1	-18	-3	-19	-27	-5.9%	325
<i>Nursing/ Midwifery awaiting registration</i>	2	8	1	1	19	-7	+18	+18	+11	+17	+131.4%	22
<i>Pre-registration Nurse/ Midwife Intern</i>	1	1	1	25	14	+0	+14	+14	+14	+14	+2,700.0%	28
Nursing/ Midwifery Student	3	9	2	26	33	-7	+32	+8	+25	+31	+276.2%	50
Nursing/ Midwifery other	4	3	3	3	3	+0	+0	+0	+0	-1	+1.0%	3
<b>Nursing &amp; Midwifery</b>	<b>515</b>	<b>523</b>	<b>526</b>	<b>522</b>	<b>525</b>	<b>+2</b>	<b>-1</b>	<b>+3</b>	<b>+2</b>	<b>+10</b>	<b>+0.3%</b>	<b>574</b>
Therapy Professions	44	36	35	35	35	-1	+1	+1	-0	-9	-1.2%	40
Social Care	7	6	5	3	3	-1	-2	+0	-3	-4	-49.0%	4
Social Workers	41	50	52	49	50	+2	-2	+1	+0	+9	+0.4%	58
Psychologists	39	36	39	37	39	+3	-0	+1	+3	-0	+7.0%	40
Pharmacy	1	2	3	3	3	+1	-0	+0	+1	+2	+59.1%	4
H&SC, Other	20	16	18	17	17	+2	-1	-0	+1	-3	+4.7%	21
<b>Health &amp; Social Care Professionals</b>	<b>154</b>	<b>146</b>	<b>151</b>	<b>144</b>	<b>147</b>	<b>+5</b>	<b>-4</b>	<b>+3</b>	<b>+1</b>	<b>-6</b>	<b>+0.6%</b>	<b>167</b>
Management (VIII & above)	3	3	4	4	4	+1	+0	+0	+1	+1	+33.3%	4
Administrative/ Supervisory (V to VII)	22	28	30	29	29	+2	-1	+0	+1	+6	+1.9%	30
Clerical (III & IV)	88	88	102	99	95	+15	-7	-4	+7	+7	+8.5%	108
<b>Management &amp; Administrative</b>	<b>114</b>	<b>119</b>	<b>136</b>	<b>132</b>	<b>128</b>	<b>+17</b>	<b>-8</b>	<b>-4</b>	<b>+9</b>	<b>+14</b>	<b>+7.6%</b>	<b>142</b>
Support	33	27	23	23	23	-4	+0	-0	-4	-10	-14.6%	25
Maintenance/ Technical	26	25	28	28	28	+4	-1	-0	+3	+2	+12.0%	28
<b>General Support</b>	<b>59</b>	<b>52</b>	<b>51</b>	<b>51</b>	<b>51</b>	<b>-0</b>	<b>-1</b>	<b>-0</b>	<b>-1</b>	<b>-8</b>	<b>-1.9%</b>	<b>53</b>
Health Care Assistants	157	152	150	148	149	-2	-1	+1	-3	-8	-2.1%	160
Care, other	4	5	3	3	3	-1	-1	+0	-2	-1	-35.1%	3
<b>Patient &amp; Client Care</b>	<b>160</b>	<b>156</b>	<b>153</b>	<b>151</b>	<b>151</b>	<b>-3</b>	<b>-2</b>	<b>+1</b>	<b>-5</b>	<b>-9</b>	<b>-3.0%</b>	<b>163</b>



## Mental Health Employment Report by Grade Group: SEP 2024

CHO 9

SEP 2024	WTE DEC 2019	WTE DEC 2022	WTE DEC 2023	WTE AUG 2024	WTE SEP 2024	WTE Change 2023	WTE Change 2024	WTE Change AUG 2024	WTE Change Dec 2022 to SEP 2024	WTE Change Dec 2019 to SEP 2024	% WTE Change Dec 2022 to SEP 2024	No. SEP 2024
<b>Total CHO 9</b>	<b>1272</b>	<b>1371</b>	<b>1338</b>	<b>1309</b>	<b>1307</b>	<b>-33</b>	<b>-31</b>	<b>-3</b>	<b>-64</b>	<b>+35</b>	<b>-4.7%</b>	<b>1,452</b>
Consultants	50	55	59	50	51	+3	-8	+1	-4	+1	-7.9%	56
Registrars	31	57	46	37	38	-11	-8	+0	-19	+7	-34.0%	39
SHO/ Interns	53	36	54	58	64	+18	+10	+6	+28	+11	+78.6%	67
<b>Medical &amp; Dental</b>	<b>134</b>	<b>148</b>	<b>158</b>	<b>145</b>	<b>152</b>	<b>+10</b>	<b>-6</b>	<b>+7</b>	<b>+4</b>	<b>+18</b>	<b>+3.0%</b>	<b>162</b>
Nurse/ Midwife Manager	132	138	146	134	133	+8	-12	-1	-4	+1	-3.3%	139
Nurse/ Midwife Specialist & AN/MP	65	99	98	100	100	-1	+2	-0	+1	+35	+1.3%	107
Staff Nurse/ Staff Midwife	351	351	315	321	319	-36	+5	-2	-32	-32	-9.0%	347
<i>Nursing/ Midwifery awaiting registration</i>	11	14	6	1	17	-8	+11	+11	+3	+6	+22.8%	24
<i>Pre-registration Nurse/ Midwife Intern</i>	10	8	7	26	7	-1	+0	+0	-1	-3	-10.6%	21
Nursing/ Midwifery Student	21	22	13	27	24	-9	+11	-3	+2	+3	+10.6%	45
Nursing/ Midwifery other	11	9	8	7	8	-1	-1	+0	-2	-4	-19.6%	9
<b>Nursing &amp; Midwifery</b>	<b>581</b>	<b>619</b>	<b>580</b>	<b>590</b>	<b>584</b>	<b>-39</b>	<b>+5</b>	<b>-6</b>	<b>-34</b>	<b>+4</b>	<b>-5.6%</b>	<b>647</b>
Therapy Professions	55	60	53	47	46	-7	-6	-1	-14	-9	-22.9%	53
Social Care	1	1	1	1	1	+0	+0	+0	+0	+0	+1.0%	1
Social Workers	43	57	55	53	50	-2	-5	-3	-7	+6	-11.9%	56
Psychologists	46	56	59	58	60	+3	+0	+1	+4	+14	+6.5%	71
Pharmacy	8	7	10	10	10	+3	+0	-0	+3	+2	+44.1%	14
H&SC, Other	15	17	19	18	17	+1	-1	-1	+0	+3	+0.4%	20
<b>Health &amp; Social Care Professionals</b>	<b>167</b>	<b>198</b>	<b>196</b>	<b>188</b>	<b>184</b>	<b>-2</b>	<b>-12</b>	<b>-4</b>	<b>-14</b>	<b>+17</b>	<b>-6.9%</b>	<b>215</b>
Management (VIII & above)	5	5	6	6	6	+1	-0	+0	+1	+1	+19.5%	6
Administrative/ Supervisory (V to VII)	28	38	41	39	40	+3	-1	+1	+1	+12	+3.7%	42
Clerical (III & IV)	104	109	110	104	104	+1	-6	-0	-5	-0	-4.6%	118
<b>Management &amp; Administrative</b>	<b>137</b>	<b>152</b>	<b>156</b>	<b>149</b>	<b>149</b>	<b>+5</b>	<b>-7</b>	<b>+1</b>	<b>-3</b>	<b>+13</b>	<b>-1.7%</b>	<b>166</b>
Support	103	95	88	92	92	-7	+4	+0	-3	-11	-2.7%	107
Maintenance/ Technical	11	11	8	9	10	-3	+2	+1	-1	-1	-8.4%	10
<b>General Support</b>	<b>114</b>	<b>106</b>	<b>96</b>	<b>101</b>	<b>102</b>	<b>-9</b>	<b>+6</b>	<b>+1</b>	<b>-4</b>	<b>-12</b>	<b>-3.3%</b>	<b>117</b>
Health Care Assistants	126	137	139	126	125	+2	-15	-2	-12	-1	-8.8%	135
Care, other	13	12	12	11	10	-0	-2	-1	-2	-3	-18.6%	10
<b>Patient &amp; Client Care</b>	<b>139</b>	<b>149</b>	<b>151</b>	<b>137</b>	<b>135</b>	<b>+2</b>	<b>-17</b>	<b>-2</b>	<b>-14</b>	<b>-4</b>	<b>-9.6%</b>	<b>145</b>





## Mental Health Employment Report by Grade Group: SEP 2024

### other Community Services

SEP 2024	WTE DEC 2019	WTE DEC 2022	WTE DEC 2023	WTE AUG 2024	WTE SEP 2024	WTE Change 2023	WTE Change 2024	WTE Change AUG 2024	WTE Change Dec 2022 to SEP 2024	WTE Change Dec 2019 to SEP 2024	% WTE Change Dec 2022 to SEP 2024	No. SEP 2024
<b>Total other Community Services</b>	<b>438</b>	<b>511</b>	<b>580</b>	<b>577</b>	<b>568</b>	<b>+69</b>	<b>-11</b>	<b>-9</b>	<b>+57</b>	<b>+131</b>	<b>+11.2%</b>	<b>593</b>
Consultants	16	15	16	17	17	+2	+0	+0	+2	+1	+13.0%	18
Registrars	13	19	18	15	15	-1	-3	+0	-4	+2	-20.4%	15
SHO/ Interns				2	2		+2	+0	+2	+2	-100.0%	2
<b>Medical &amp; Dental</b>	<b>29</b>	<b>34</b>	<b>34</b>	<b>33</b>	<b>34</b>	<b>+1</b>	<b>-1</b>	<b>+0</b>	<b>+0</b>	<b>+5</b>	<b>+0.3%</b>	<b>35</b>
Nurse/ Midwife Manager	62	81	83	75	73	+3	-10	-2	-8	+11	-9.5%	76
Nurse/ Midwife Specialist & AN/MP	8	11	11	20	19	+0	+7	-2	+8	+10	+69.8%	21
Staff Nurse/ Staff Midwife	169	151	167	177	177	+16	+10	+1	+26	+8	+17.4%	183
<i>Nursing/ Midwifery awaiting registration</i>			2			+2	-2	-2			-100.0%	
<i>Pre-registration Nurse/ Midwife Intern</i>			1			+1	-1	-1			-100.0%	
Nursing/ Midwifery Student			3			+3	-3				-100.0%	
Nursing/ Midwifery other	1	2	2	2	2	+0	+0	+0	+0	+1	+1.5%	2
<b>Nursing &amp; Midwifery</b>	<b>240</b>	<b>245</b>	<b>266</b>	<b>274</b>	<b>271</b>	<b>+22</b>	<b>+4</b>	<b>-3</b>	<b>+26</b>	<b>+31</b>	<b>+10.8%</b>	<b>282</b>
Therapy Professions	11	10	10	9	9	+0	-1	-0	-1	-2	-8.6%	9
Social Care	2	1	2	2	1	+1	-1	-1	-0	-1	-6.1%	1
Social Workers	15	11	14	15	15	+3	+1	-0	+4	-0	+35.2%	16
Psychologists	6	5	4	3	3	-1	-1	+0	-2	-3	-44.2%	3
Pharmacy		2	3	1	1	+1	-2	-0	-1	+1	-62.1%	1
<b>Health &amp; Social Care Professionals</b>	<b>34</b>	<b>29</b>	<b>33</b>	<b>30</b>	<b>28</b>	<b>+4</b>	<b>-5</b>	<b>-1</b>	<b>-1</b>	<b>-6</b>	<b>-2.3%</b>	<b>30</b>
Management (VIII & above)	27	33	33	32	32	+0	-1	-0	-1	+5	-2.0%	32
Administrative/ Supervisory (V to VII)	31	46	59	59	58	+13	-2	-1	+12	+27	+25.7%	60
Clerical (III & IV)	25	28	34	34	33	+6	-1	-1	+5	+8	+19.3%	34
<b>Management &amp; Administrative</b>	<b>83</b>	<b>106</b>	<b>126</b>	<b>125</b>	<b>123</b>	<b>+20</b>	<b>-4</b>	<b>-3</b>	<b>+17</b>	<b>+40</b>	<b>+15.5%</b>	<b>126</b>
Support	12	25	17	16	15	-7	-2	-0	-9	+3	-38.3%	17
Maintenance/ Technical	2	8	5	8	8	-3	+3	+0	+0	+6	+0.4%	8
<b>General Support</b>	<b>14</b>	<b>33</b>	<b>23</b>	<b>24</b>	<b>23</b>	<b>-10</b>	<b>+1</b>	<b>-0</b>	<b>-9</b>	<b>+9</b>	<b>-28.9%</b>	<b>25</b>
Health Care Assistants	37	64	83	77	76	+19	-8	-2	+11	+39	+17.3%	81
Care, other	1	0	14	14	14	+14	-0	-0	+13	+13	+2,825.5%	14
<b>Patient &amp; Client Care</b>	<b>37</b>	<b>65</b>	<b>97</b>	<b>91</b>	<b>89</b>	<b>+32</b>	<b>-8</b>	<b>-2</b>	<b>+24</b>	<b>+52</b>	<b>+37.6%</b>	<b>95</b>



# Mental Health Employment Report by Grade Group: SEP 2024

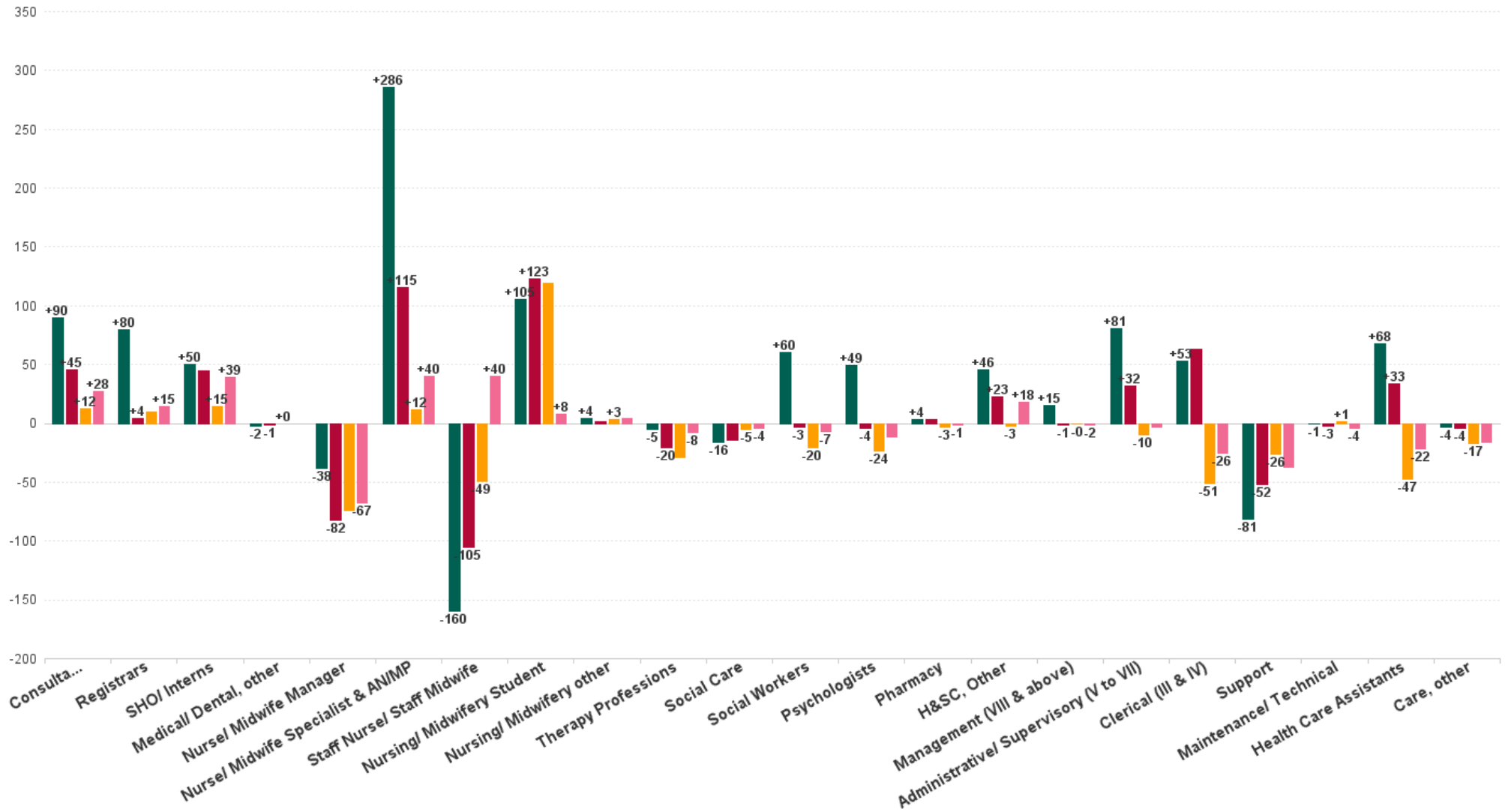
SEP 2024	WTE DEC 2019	WTE DEC 2022	WTE DEC 2023	WTE AUG 2024	WTE SEP 2024	WTE Change 2023	WTE Change 2024	WTE Change AUG 2024	WTE Change Dec 2022 to SEP 2024	WTE Change Dec 2019 to SEP 2024	% WTE Change Dec 2022 to SEP 2024	No. SEP 2024
<b>Overall</b>	<b>9,967</b>	<b>10,453</b>	<b>10,838</b>	<b>10,671</b>	<b>10,651</b>	<b>+385</b>	<b>-187</b>	<b>-20</b>	<b>+197</b>	<b>+684</b>	<b>1.89%</b>	<b>11,726</b>
Consultant Medicine	1	1	1	1	1	+0	+0	+0	+0	+0	0.00%	1
Consultant Psychiatry	352	396	429	437	441	+33	+12	+4	+45	+90	11.41%	485
<b>Consultants</b>	<b>353</b>	<b>397</b>	<b>430</b>	<b>438</b>	<b>442</b>	<b>+33</b>	<b>+12</b>	<b>+4</b>	<b>+45</b>	<b>+90</b>	<b>11.39%</b>	<b>486</b>
Registrar	169	217	208	202	207	-9	-1	+5	-10	+38	-4.74%	214
Senior Registrar	97	126	127	142	142	+1	+15	-0	+16	+45	12.85%	149
Specialist Registrar	3	2	4			+2	-4		-2	-3	-100.00%	
<b>Registrars</b>	<b>269</b>	<b>345</b>	<b>339</b>	<b>344</b>	<b>349</b>	<b>-6</b>	<b>+10</b>	<b>+5</b>	<b>+4</b>	<b>+80</b>	<b>1.12%</b>	<b>363</b>
Interns	8	5	7	7	7	+2	-0	+0	+2	-1	41.26%	7
Senior House Officer	253	262	290	296	305	+28	+15	+9	+43	+52	16.21%	315
<b>SHO/ Interns</b>	<b>261</b>	<b>267</b>	<b>297</b>	<b>303</b>	<b>312</b>	<b>+30</b>	<b>+15</b>	<b>+9</b>	<b>+45</b>	<b>+50</b>	<b>16.67%</b>	<b>322</b>
Other Medical	5	4	3	3	3	-1	+0	+0	-1	-2	-24.04%	6
<b>Medical/ Dental, other</b>	<b>5</b>	<b>4</b>	<b>3</b>	<b>3</b>	<b>3</b>	<b>-1</b>	<b>+0</b>	<b>+0</b>	<b>-1</b>	<b>-2</b>	<b>-24.04%</b>	<b>6</b>
<b>Medical &amp; Dental</b>	<b>888</b>	<b>1,013</b>	<b>1,069</b>	<b>1,088</b>	<b>1,105</b>	<b>+56</b>	<b>+37</b>	<b>+17</b>	<b>+93</b>	<b>+218</b>	<b>9.15%</b>	<b>1,177</b>
Clinical Nurse/ Midwife Manager 1	142	142	135	127	125	-7	-10	-2	-17	-17	-11.80%	129
Clinical Nurse/ Midwife Manager 2	755	781	768	720	718	-12	-50	-2	-63	-37	-8.02%	760
Clinical Nurse/ Midwife Manager 3	111	113	119	116	111	+6	-8	-5	-2	-0	-2.03%	113
Director Nursing/Midwifery, Assistant	165	176	183	182	178	+7	-5	-4	+2	+14	1.23%	184
Director of Nursing/Midwifery	29	34	32	31	31	-2	-1	-0	-3	+2	-7.78%	32
<b>Nurse/ Midwife Manager</b>	<b>1,201</b>	<b>1,245</b>	<b>1,237</b>	<b>1,177</b>	<b>1,163</b>	<b>-8</b>	<b>-74</b>	<b>-13</b>	<b>-82</b>	<b>-38</b>	<b>-6.59%</b>	<b>1,218</b>
Advanced Nurse/ Midwife Practitioner	19	48	59	68	69	+11	+10	+1	+21	+50	42.68%	72
Adv. Nurse/ Midwife, Candidate	11	20	29	24	21	+9	-8	-3	+1	+10	5.34%	23
Clinical Nurse/ Midwife Spec., Candidate			1	1	1	+1	-0	-0	+1	+1	-100.00%	1
Clinical Nurse/ Midwife Specialist	430	563	645	666	656	+83	+10	-10	+93	+225	16.53%	711
<b>Nurse/ Midwife Specialist &amp; AN/MP</b>	<b>460</b>	<b>631</b>	<b>734</b>	<b>758</b>	<b>746</b>	<b>+104</b>	<b>+12</b>	<b>-12</b>	<b>+115</b>	<b>+286</b>	<b>18.28%</b>	<b>807</b>
Staff Nurse [Intellectual Disability]	5	7	7	14	16	+0	+9	+2	+9	+11	136.39%	16
Staff Nurse [Psychiatric]	2,890	2,835	2,792	2,742	2,731	-43	-60	-10	-103	-159	-3.65%	2,967
Staff Nurses [General/ Children's]	108	106	93	96	96	-13	+3	-0	-10	-12	-9.84%	103
<b>Staff Nurse/ Staff Midwife</b>	<b>3,002</b>	<b>2,948</b>	<b>2,892</b>	<b>2,851</b>	<b>2,843</b>	<b>-56</b>	<b>-49</b>	<b>-9</b>	<b>-105</b>	<b>-160</b>	<b>-3.56%</b>	<b>3,086</b>
Nursing/ Midwifery awaiting registration	57	39	56	3	72	+17	+17	+69	+34	+16	87.04%	94
Post-registration Nurse/ Midwife Student	1									-1	-100.00%	
Pre-registration Nurse/ Midwife Intern	25	26	14	159	116	-13	+102	-44	+89	+91	337.98%	222
<b>Nursing/ Midwifery Student</b>	<b>83</b>	<b>65</b>	<b>69</b>	<b>162</b>	<b>188</b>	<b>+4</b>	<b>+119</b>	<b>+26</b>	<b>+123</b>	<b>+105</b>	<b>188.76%</b>	<b>316</b>
Nursing Education/Clinical	32	34	33	36	36	-2	+3	-0	+1	+4	3.90%	40
<b>Nursing/ Midwifery other</b>	<b>32</b>	<b>34</b>	<b>33</b>	<b>36</b>	<b>36</b>	<b>-2</b>	<b>+3</b>	<b>-0</b>	<b>+1</b>	<b>+4</b>	<b>3.90%</b>	<b>40</b>
<b>Nursing &amp; Midwifery</b>	<b>4,778</b>	<b>4,924</b>	<b>4,965</b>	<b>4,984</b>	<b>4,976</b>	<b>+42</b>	<b>+11</b>	<b>-8</b>	<b>+53</b>	<b>+198</b>	<b>1.07%</b>	<b>5,467</b>
Dietitians	19	18	24	23	24	+6	-1	+1	+6	+5	31.35%	27
Occupational Therapists	337	346	353	327	325	+7	-28	-2	-21	-11	-6.06%	371
Physiotherapists	2	3	1	1	1	-2	+0	+0	-2	-1	-67.35%	2
Podiatrists & Chiropodists	1	1				-1			-1	-1	-100.00%	
Speech & Language Therapists	62	68	66	65	65	-2	-1	+0	-2	+3	-3.66%	78
<b>Therapy Professions</b>	<b>420</b>	<b>435</b>	<b>444</b>	<b>416</b>	<b>415</b>	<b>+9</b>	<b>-29</b>	<b>-1</b>	<b>-20</b>	<b>-5</b>	<b>-4.69%</b>	<b>478</b>
Social Care	74	72	63	59	58	-9	-5	-1	-14	-16	-19.41%	66
<b>Social Care</b>	<b>74</b>	<b>72</b>	<b>63</b>	<b>59</b>	<b>58</b>	<b>-9</b>	<b>-5</b>	<b>-1</b>	<b>-14</b>	<b>-16</b>	<b>-19.41%</b>	<b>66</b>
Social Workers	350	414	431	412	410	+17	-20	-1	-3	+60	-0.81%	459
<b>Social Workers</b>	<b>350</b>	<b>414</b>	<b>431</b>	<b>412</b>	<b>410</b>	<b>+17</b>	<b>-20</b>	<b>-1</b>	<b>-3</b>	<b>+60</b>	<b>-0.81%</b>	<b>459</b>
Psychologists	394	448	467	446	444	+20	-24	-3	-4	+49	-0.92%	519
<b>Psychologists</b>	<b>394</b>	<b>448</b>	<b>467</b>	<b>446</b>	<b>444</b>	<b>+20</b>	<b>-24</b>	<b>-3</b>	<b>-4</b>	<b>+49</b>	<b>-0.92%</b>	<b>519</b>
Pharmacists	16	16	21	18	18	+5	-3	-0	+2	+2	13.16%	23
Pharmacy Technicians	2	4	5	5	5	+1	+0	+0	+1	+2	22.04%	7
<b>Pharmacy</b>	<b>19</b>	<b>19</b>	<b>25</b>	<b>22</b>	<b>22</b>	<b>+6</b>	<b>-3</b>	<b>-0</b>	<b>+3</b>	<b>+4</b>	<b>14.88%</b>	<b>30</b>
Counsellor Therapists	95	124	145	148	147	+21	+3	-0	+23	+53	18.71%	166
HSCP Trainees/Students			4	1		+4	-4	-1			-100.00%	
Other Health & Social Care	11	3	3	2	2	-0	-0	-0	-1	-9	-23.41%	6
Play Therapists/ Specialists	1	3	4	4	3	+1	-1	-1	+0	+2	0.00%	4
<b>H&amp;SC, Other</b>	<b>107</b>	<b>130</b>	<b>155</b>	<b>155</b>	<b>153</b>	<b>+25</b>	<b>-3</b>	<b>-2</b>	<b>+23</b>	<b>+46</b>	<b>17.30%</b>	<b>176</b>
<b>Health &amp; Social Care Professionals</b>	<b>1,364</b>	<b>1,518</b>	<b>1,586</b>	<b>1,510</b>	<b>1,502</b>	<b>+68</b>	<b>-84</b>	<b>-8</b>	<b>-16</b>	<b>+137</b>	<b>-1.08%</b>	<b>1,728</b>
CEO/Chief Officer			1	1	1	+1	+0	+0	+1	+1	-100.00%	1
General Managers	22	27	23	22	23	-4	+0	+1	-4	+1	-13.27%	23
National Director	2	1				-1			-1	-2	-100.00%	
National Director, Assistant	2	3	4	4	4	+1	+0	+0	+1	+2	34.68%	4
Other Executives	7	10	11	11	10	+1	-1	-1	-0	+3	-1.41%	10
VIII	25	34	35	35	35	+0	+1	+0	+1	+10	3.66%	36



SEP 2024	WTE DEC 2019	WTE DEC 2022	WTE DEC 2023	WTE AUG 2024	WTE SEP 2024	WTE Change 2023	WTE Change 2024	WTE Change AUG 2024	WTE Change Dec 2022 to SEP 2024	WTE Change Dec 2019 to SEP 2024	% WTE Change Dec 2022 to SEP 2024	No. SEP 2024
<b>Overall</b>	<b>9,967</b>	<b>10,453</b>	<b>10,838</b>	<b>10,671</b>	<b>10,651</b>	<b>+385</b>	<b>-187</b>	<b>-20</b>	<b>+197</b>	<b>+684</b>	<b>1.89%</b>	<b>11,726</b>
<b>Management (VIII &amp; above)</b>	<b>58</b>	<b>75</b>	<b>73</b>	<b>74</b>	<b>73</b>	<b>-1</b>	<b>-0</b>	<b>-0</b>	<b>-1</b>	<b>+15</b>	<b>-1.84%</b>	<b>74</b>
Middle Management (V-VII)	236	285	327	319	318	+42	-9	-1	+32	+81	11.25%	335
Other Administrative	2	2	2	1	1	+0	-1	+0	-1	-1	-36.31%	1
<b>Administrative/ Supervisory (V to VII)</b>	<b>238</b>	<b>287</b>	<b>329</b>	<b>320</b>	<b>319</b>	<b>+42</b>	<b>-10</b>	<b>-1</b>	<b>+32</b>	<b>+81</b>	<b>10.99%</b>	<b>336</b>
General Administrative (III & IV)	717	707	821	780	770	+115	-51	-10	+63	+53	8.96%	860
<b>Clerical (III &amp; IV)</b>	<b>717</b>	<b>707</b>	<b>821</b>	<b>780</b>	<b>770</b>	<b>+115</b>	<b>-51</b>	<b>-10</b>	<b>+63</b>	<b>+53</b>	<b>8.96%</b>	<b>860</b>
<b>Management &amp; Administrative</b>	<b>1,014</b>	<b>1,068</b>	<b>1,223</b>	<b>1,173</b>	<b>1,162</b>	<b>+155</b>	<b>-62</b>	<b>-11</b>	<b>+93</b>	<b>+148</b>	<b>8.75%</b>	<b>1,270</b>
Catering	66	68	83	145	145	+15	+63	+0	+78	+80	115.14%	162
Household Services	424	397	374	291	290	-24	-84	-1	-108	-135	-27.08%	334
Other Support	47	40	30	28	28	-10	-2	-0	-12	-19	-30.37%	33
Portering	48	51	44	41	41	-7	-3	+0	-10	-7	-19.38%	41
<b>Support</b>	<b>585</b>	<b>556</b>	<b>530</b>	<b>505</b>	<b>504</b>	<b>-25</b>	<b>-26</b>	<b>-1</b>	<b>-52</b>	<b>-81</b>	<b>-9.32%</b>	<b>570</b>
Maintenance	127	129	125	126	126	-4	+1	-0	-3	-1	-2.05%	129
<b>Maintenance/ Technical</b>	<b>127</b>	<b>129</b>	<b>125</b>	<b>126</b>	<b>126</b>	<b>-4</b>	<b>+1</b>	<b>-0</b>	<b>-3</b>	<b>-1</b>	<b>-2.05%</b>	<b>129</b>
<b>General Support</b>	<b>712</b>	<b>685</b>	<b>655</b>	<b>631</b>	<b>630</b>	<b>-29</b>	<b>-25</b>	<b>-1</b>	<b>-54</b>	<b>-82</b>	<b>-7.95%</b>	<b>699</b>
Attendant/ Aide	605	423	409	376	380	-14	-28	+4	-42	-225	-10.01%	416
Health Care Assistant/ Care Assistant	382	588	665	657	651	+76	-14	-6	+62	+269	10.57%	686
Health & Social Care Assistants	9	19	38	39	33	+18	-5	-6	+13	+24	70.06%	37
<b>Health Care Assistants</b>	<b>996</b>	<b>1,030</b>	<b>1,111</b>	<b>1,072</b>	<b>1,063</b>	<b>+81</b>	<b>-47</b>	<b>-8</b>	<b>+33</b>	<b>+68</b>	<b>3.23%</b>	<b>1,139</b>
Home Care Services	16	23	21	14	14	-2	-6	+0	-9	-1	-38.04%	20
Other Care Grades	23	19	41	46	45	+22	+4	-1	+26	+23	136.56%	49
Pastoral Care	13	9	10	7	7	+1	-3	+0	-3	-6	-28.69%	11
Workshop Services	165	164	157	145	146	-7	-12	+1	-18	-19	-11.23%	166
<b>Care, other</b>	<b>216</b>	<b>216</b>	<b>229</b>	<b>212</b>	<b>212</b>	<b>+13</b>	<b>-17</b>	<b>-0</b>	<b>-4</b>	<b>-4</b>	<b>-1.71%</b>	<b>246</b>
<b>Patient &amp; Client Care</b>	<b>1,212</b>	<b>1,246</b>	<b>1,340</b>	<b>1,284</b>	<b>1,276</b>	<b>+94</b>	<b>-64</b>	<b>-8</b>	<b>+30</b>	<b>+64</b>	<b>2.37%</b>	<b>1,385</b>

# WTE Change by Staff Category

■ WTE change since DEC 2019 
 ■ WTE change since DEC 2022 
 ■ WTE change since DEC 2023 
 ■ WTE change since SEP 2023



## Mental Health Employment Report by WTE, Headcount, Gender, Full-Time / Part-Time etc. SEP 2024

SEP 2024	WTE SEP 2024	No. SEP 2024	WTE : No	% Male	% Female	Male WTE : No.	Female WTE : No	Perm Count %	Perm Count Male %	Perm Count Female %	Fulltime Count %	Part time Count %	FT Count Male %	FT Count Female %
<b>Total</b>	<b>10,651</b>	<b>11,726</b>	<b>1:0.9</b>	<b>26.65%</b>	<b>73.35%</b>	<b>1:1</b>	<b>1:0.9</b>	<b>84.80%</b>	<b>21.90%</b>	<b>62.90%</b>	<b>86.28%</b>	<b>13.72%</b>	<b>94.08%</b>	<b>83.44%</b>
Consultants	442.2	486	1:0.9	42.39%	57.61%	1:0.9	1:0.9	71.19%	29.84%	41.36%	86.01%	13.99%	92.23%	81.43%
Registrars	348.61	363	1:1	42.42%	57.58%	1:1	1:0.9	3.86%	1.65%	2.20%	94.77%	5.23%	98.70%	91.87%
SHO/ Interns	311.63	322	1:1	39.75%	60.25%	1:1	1:1	0.31%		0.31%	98.45%	1.55%	100.00%	97.42%
Medical/ Dental, other	2.97	6	1:0.5	50.00%	50.00%	1:0.4	1:0.5	50.00%	16.67%	33.33%	33.33%	66.67%	33.33%	33.33%
<b>Medical &amp; Dental</b>	<b>1,105</b>	<b>1,177</b>	<b>1:0.9</b>	<b>41.72%</b>	<b>58.28%</b>	<b>1:1</b>	<b>1:0.9</b>	<b>30.93%</b>	<b>12.91%</b>	<b>18.01%</b>	<b>91.84%</b>	<b>8.16%</b>	<b>95.93%</b>	<b>88.92%</b>
Nurse/ Midwife Manager	1,163.31	1,218	1:1	36.62%	63.38%	1:1	1:0.9	98.85%	36.04%	62.81%	95.16%	4.84%	97.98%	93.52%
Nurse/ Midwife Specialist & AN/MP	746.08	807	1:0.9	18.96%	81.04%	1:1	1:0.9	99.75%	18.84%	80.92%	92.81%	7.19%	98.04%	91.59%
Staff Nurse/ Staff Midwife	2,842.94	3,086	1:0.9	25.05%	74.95%	1:0.9	1:0.9	93.00%	22.55%	70.45%	88.11%	11.89%	91.85%	86.86%
Nursing/ Midwifery Student	188.13	316	1:0.6	14.56%	85.44%	1:0.6	1:0.6	2.22%	0.63%	1.58%	98.42%	1.58%	100.00%	98.15%
Nursing/ Midwifery other	35.72	40	1:0.9	12.50%	87.50%	1:1	1:0.9	100.00%	12.50%	87.50%	90.00%	10.00%	100.00%	88.57%
<b>Nursing &amp; Midwifery</b>	<b>4,976</b>	<b>5,467</b>	<b>1:0.9</b>	<b>26.03%</b>	<b>73.97%</b>	<b>1:0.9</b>	<b>1:0.9</b>	<b>90.10%</b>	<b>23.67%</b>	<b>66.43%</b>	<b>90.98%</b>	<b>9.02%</b>	<b>94.73%</b>	<b>89.66%</b>
Therapy Professions	415	478	1:0.9	8.16%	91.84%	1:0.9	1:0.9	97.70%	8.16%	89.54%	82.85%	17.15%	87.18%	82.46%
Social Care	57.91	66	1:0.9	21.21%	78.79%	1:0.9	1:0.9	98.48%	21.21%	77.27%	69.70%	30.30%	78.57%	67.31%
Social Workers	410.24	459	1:0.9	17.21%	82.79%	1:1	1:0.9	95.86%	16.34%	79.52%	83.88%	16.12%	94.94%	81.58%
Psychologists	443.74	519	1:0.9	18.30%	81.70%	1:0.9	1:0.8	72.45%	15.03%	57.42%	83.04%	16.96%	97.89%	79.72%
Pharmacy	22.08	30	1:0.7	13.33%	86.67%	1:0.9	1:0.7	96.67%	13.33%	83.33%	43.33%	56.67%	75.00%	38.46%
H&SC, Other	152.85	176	1:0.9	18.75%	81.25%	1:1	1:0.8	94.32%	18.18%	76.14%	69.89%	30.11%	87.88%	65.73%
<b>Health &amp; Social Care Professionals</b>	<b>1,502</b>	<b>1,728</b>	<b>1:0.9</b>	<b>15.28%</b>	<b>84.72%</b>	<b>1:0.9</b>	<b>1:0.9</b>	<b>89.29%</b>	<b>14.00%</b>	<b>75.29%</b>	<b>80.67%</b>	<b>19.33%</b>	<b>92.80%</b>	<b>78.48%</b>
Management (VIII & above)	73.22	74	1:1	32.43%	67.57%	1:1	1:1	98.65%	31.08%	67.57%	98.65%	1.35%	95.83%	100.00%
Administrative/ Supervisory (V to VII)	318.58	336	1:0.9	20.54%	79.46%	1:1	1:0.9	97.02%	19.35%	77.68%	88.69%	11.31%	98.55%	86.14%
Clerical (III & IV)	769.95	860	1:0.9	9.19%	90.81%	1:1	1:0.9	88.26%	8.37%	79.88%	78.49%	21.51%	93.67%	76.95%
<b>Management &amp; Administrative</b>	<b>1,162</b>	<b>1,270</b>	<b>1:0.9</b>	<b>13.54%</b>	<b>86.46%</b>	<b>1:1</b>	<b>1:0.9</b>	<b>91.18%</b>	<b>12.60%</b>	<b>78.58%</b>	<b>82.36%</b>	<b>17.64%</b>	<b>95.93%</b>	<b>80.24%</b>
Support	504.03	570	1:0.9	29.82%	70.18%	1:1	1:0.9	95.96%	28.07%	67.89%	65.26%	34.74%	90.00%	54.75%
Maintenance/ Technical	126.09	129	1:1	99.22%	0.78%	1:1	1:1	94.57%	93.80%	0.78%	96.90%	3.10%	96.88%	100.00%
<b>General Support</b>	<b>630</b>	<b>699</b>	<b>1:0.9</b>	<b>42.63%</b>	<b>57.37%</b>	<b>1:1</b>	<b>1:0.9</b>	<b>95.71%</b>	<b>40.20%</b>	<b>55.51%</b>	<b>71.10%</b>	<b>28.90%</b>	<b>92.95%</b>	<b>54.86%</b>
Health Care Assistants	1,063.39	1,139	1:0.9	31.87%	68.13%	1:1	1:0.9	93.50%	29.68%	63.83%	82.97%	17.03%	92.84%	78.35%
Care, other	212.28	246	1:0.9	46.34%	53.66%	1:0.9	1:0.8	89.02%	41.06%	47.97%	73.17%	26.83%	85.09%	62.88%
<b>Patient &amp; Client Care</b>	<b>1,276</b>	<b>1,385</b>	<b>1:0.9</b>	<b>34.44%</b>	<b>65.56%</b>	<b>1:0.9</b>	<b>1:0.9</b>	<b>92.71%</b>	<b>31.70%</b>	<b>61.01%</b>	<b>81.23%</b>	<b>18.77%</b>	<b>90.99%</b>	<b>76.10%</b>



## Mental Health Employment Report by WTE, Headcount, Gender, Full-Time / Part-Time etc. SEP 2024

SEP 2024	WTE SEP 2024	No. SEP 2024	WTE : No	% Male	% Female	Male WTE : No.	Female WTE : No	Perm Count %	Number Male %	Number Female %	Fulltime Count %	Part time Count %	FT Count Male %	FT Count Female %
<b>Total</b>	<b>10,651</b>	<b>11,726</b>	<b>1:0.9</b>	<b>26.65%</b>	<b>73.35%</b>	<b>1:1</b>	<b>1:0.9</b>	<b>84.80%</b>	<b>21.90%</b>	<b>62.90%</b>	<b>86.28%</b>	<b>13.72%</b>	<b>94.08%</b>	<b>83.44%</b>
CHO 1	1,032	1,125	1:0.9	26.22%	73.78%	1:1	1:0.9	88.89%	22.04%	66.84%	87.56%	12.44%	95.59%	84.70%
CHO 2	1,331	1,459	1:0.9	27.90%	72.10%	1:1	1:0.9	86.70%	22.62%	64.08%	86.50%	13.50%	92.38%	84.22%
CHO 3	832	912	1:0.9	21.05%	78.95%	1:1	1:0.9	81.47%	17.21%	64.25%	88.49%	11.51%	92.19%	87.50%
CHO 4	1,566	1,756	1:0.9	25.28%	74.72%	1:0.9	1:0.9	75.91%	18.68%	57.23%	82.80%	17.20%	92.34%	79.57%
CHO 5	1,302	1,445	1:0.9	24.50%	75.50%	1:0.9	1:0.9	88.86%	20.69%	68.17%	82.21%	17.79%	93.22%	78.64%
CHO 6	671	758	1:0.9	28.63%	71.37%	1:0.9	1:0.9	86.54%	24.41%	62.14%	84.30%	15.70%	91.24%	81.52%
CHO 7	929	1,011	1:0.9	23.34%	76.66%	1:1	1:0.9	83.88%	19.09%	64.79%	89.61%	10.39%	96.19%	87.61%
CHO 8	1,113	1,215	1:0.9	25.43%	74.57%	1:1	1:0.9	84.61%	20.08%	64.53%	86.91%	13.09%	96.44%	83.66%
CHO 9	1,307	1,452	1:0.9	27.69%	72.31%	1:1	1:0.9	85.33%	23.21%	62.12%	86.43%	13.57%	96.52%	82.57%
other Community Services	568	593	1:1	45.36%	54.64%	1:1	1:1	92.41%	41.65%	50.76%	95.28%	4.72%	94.42%	95.99%



## Previous Month Summary

	% WTE change since AUG 2024	WTE change since AUG 2024	CHO 1	CHO 2	CHO 3	CHO 4	CHO 5	CHO 6	CHO 7	CHO 8	CHO 9	other Community Services
<b>Total</b>	<b>-0.2%</b>	<b>-19.9</b>	<b>-18.3</b>	<b>-29.5</b>	<b>-19.5</b>	<b>-49.0</b>	<b>-23.4</b>	<b>-12.0</b>	<b>+16.7</b>	<b>-9.2</b>	<b>-31.5</b>	<b>-11.4</b>
Consultants	+0.9%	+3.8	+3.9	+1.1	-1.1	+5.2	-1.1	+0.8	+8.1	+2.6	-7.8	+0.4
Registrars	+1.4%	+4.7	+0.0	+2.9	+6.5	-1.1	+0.6	+2.5	+4.1	+5.7	-8.1	-3.0
SHO/ Interns	+2.8%	+8.6	+2.3	+0.6	-8.0	+3.8	+5.6	+0.0	+0.5	-1.9	+9.9	+2.0
Medical/ Dental, other	+0.0%	+0.0				+0.0	+0.0					
<b>Medical &amp; Dental</b>	<b>+1.6%</b>	<b>+17.1</b>	<b>+6.1</b>	<b>+4.6</b>	<b>-2.6</b>	<b>+7.9</b>	<b>+5.0</b>	<b>+3.3</b>	<b>+12.7</b>	<b>+6.5</b>	<b>-6.0</b>	<b>-0.6</b>
Nurse/ Midwife Manager	-1.1%	-13.3	-7.9	-7.1	-4.4	+0.2	-3.7	-11.7	+1.2	-18.1	-12.3	-10.2
Nurse/ Midwife Specialist & AN/MP	-1.6%	-11.9	+0.0	-2.6	-3.2	-5.4	-7.3	+20.4	-3.4	+3.8	+2.0	+7.5
Staff Nurse/ Staff Midwife	-0.3%	-8.5	-1.8	-3.4	-11.2	-38.4	+3.1	-7.6	+13.9	-18.2	+4.6	+10.2
Nursing/ Midwifery Student	+15.8%	+25.7	+5.0	+7.2	+21.5	+21.0	+5.8	+5.4	+13.0	+31.9	+11.2	-3.0
Nursing/ Midwifery other	-0.2%	-0.1	-0.4	+1.0	-1.0	+2.0	-0.0	+0.3	+2.1	+0.0	-0.8	+0.0
<b>Nursing &amp; Midwifery</b>	<b>-0.2%</b>	<b>-8.1</b>	<b>-5.0</b>	<b>-4.9</b>	<b>+1.7</b>	<b>-20.6</b>	<b>-2.2</b>	<b>+6.7</b>	<b>+26.7</b>	<b>-0.6</b>	<b>+4.7</b>	<b>+4.4</b>
Therapy Professions	-0.1%	-0.5	-5.6	-2.8	-2.0	-6.1	-0.3	-3.6	-2.4	+0.9	-6.4	-1.0
Social Care	-1.5%	-0.9	+1.2	-0.9	+0.0	+0.8	+0.2	-1.4	-2.2	-1.9	+0.0	-1.1
Social Workers	-0.4%	-1.5	+0.0	+2.8	-1.2	-4.6	-2.6	-4.5	-4.0	-2.1	-5.0	+0.8
Psychologists	-0.6%	-2.5	-0.7	-4.4	-5.6	-5.8	-1.7	-3.4	-1.3	-0.2	+0.4	-1.0



Pharmacy	-1.1%	-0.3	-0.2	+0.0	+0.1	-0.8			-0.1	-0.0	+0.0	-2.3
H&SC, Other	-1.4%	-2.2	+3.2	-0.8	+0.3	-1.0	-1.9	-1.1	+0.7	-0.9	-1.1	
<b>Health &amp; Social Care Professionals</b>	<b>-0.5%</b>	<b>-7.9</b>	<b>-2.0</b>	<b>-6.1</b>	<b>-8.3</b>	<b>-17.4</b>	<b>-6.3</b>	<b>-13.9</b>	<b>-9.2</b>	<b>-4.2</b>	<b>-12.1</b>	<b>-4.5</b>
Management (VIII & above)	-0.5%	-0.4	+0.1	+1.0	+0.0	-1.0	-0.0	+0.0	+0.9	+0.0	-0.1	-1.0
Administrative/ Supervisory (V to VII)	-0.3%	-1.0	+0.4	+4.0	-1.8	-2.8	-1.8	-1.9	-2.4	-1.1	-1.2	-1.5
Clerical (III & IV)	-1.3%	-9.9	-8.0	-9.0	-3.2	-1.5	-7.4	-0.7	-7.4	-7.2	-6.0	-1.0
<b>Management &amp; Administrative</b>	<b>-1.0%</b>	<b>-11.3</b>	<b>-7.6</b>	<b>-3.9</b>	<b>-5.0</b>	<b>-5.2</b>	<b>-9.2</b>	<b>-2.6</b>	<b>-8.9</b>	<b>-8.3</b>	<b>-7.3</b>	<b>-3.5</b>
Support	-0.2%	-1.2	-6.4	-3.5	+0.1	-6.0	-7.7	-5.7	+0.8	+0.1	+3.9	-2.1
Maintenance/ Technical	-0.1%	-0.1	-0.5	-0.4	+1.0	+0.0	-1.0	-1.8	+0.0	-0.9	+2.0	+2.8
<b>General Support</b>	<b>-0.2%</b>	<b>-1.3</b>	<b>-6.8</b>	<b>-3.8</b>	<b>+1.1</b>	<b>-6.0</b>	<b>-8.7</b>	<b>-7.5</b>	<b>+0.8</b>	<b>-0.8</b>	<b>+5.9</b>	<b>+0.7</b>
Health Care Assistants	-0.8%	-8.2	-2.0	-6.4	-6.3	-7.6	-3.9	+3.5	-1.2	-1.3	-14.5	-7.6
Care, other	-0.1%	-0.2	-1.1	-8.9	-0.1	+0.0	+1.9	-1.5	-4.2	-0.5	-2.2	-0.3
<b>Patient &amp; Client Care</b>	<b>-0.7%</b>	<b>-8.4</b>	<b>-3.1</b>	<b>-15.3</b>	<b>-6.4</b>	<b>-7.6</b>	<b>-2.0</b>	<b>+2.0</b>	<b>-5.4</b>	<b>-1.8</b>	<b>-16.8</b>	<b>-7.9</b>





## Year on Year Summary

	% WTE change since SEP 2023	WTE change since SEP 2023	CHO 1	CHO 2	CHO 3	CHO 4	CHO 5	CHO 6	CHO 7	CHO 8	CHO 9	other Community Services
<b>Total</b>	<b>-0.2%</b>	<b>-16.2</b>	<b>-18.2</b>	<b>-4.1</b>	<b>+14.8</b>	<b>-7.8</b>	<b>-16.9</b>	<b>+0.9</b>	<b>+25.2</b>	<b>-30.0</b>	<b>+5.0</b>	<b>+15.0</b>
Consultants	+0.3%	+27.6	+5.1	+3.8	-2.0	+8.2	+1.8	+1.5	+8.5	+2.9	-2.7	+0.4
Registrars	+0.1%	+14.6	+1.8	+5.7	+5.3	+1.5	+0.3	+0.7	+3.0	+6.9	-8.1	-2.4
SHO/ Interns	+0.4%	+39.1	+5.5	+2.9	-5.0	+7.9	+8.9	+0.0	+0.0	+0.3	+16.5	+2.0
Medical/ Dental, other	+0.0%	+0.0				+0.0	+0.0					
<b>Medical &amp; Dental</b>	<b>+0.8%</b>	<b>+81.2</b>	<b>+12.4</b>	<b>+12.4</b>	<b>-1.7</b>	<b>+17.6</b>	<b>+11.1</b>	<b>+2.2</b>	<b>+11.5</b>	<b>+10.1</b>	<b>+5.7</b>	<b>-0.0</b>
Nurse/ Midwife Manager	-0.6%	-67.3	-13.7	-6.7	+1.6	-3.4	-11.1	-8.1	+2.0	-17.6	-5.7	-4.6
Nurse/ Midwife Specialist & AN/MP	+0.4%	+40.5	+3.6	+5.7	+0.4	+1.9	-5.1	+23.3	-1.2	+5.1	-0.9	+7.7
Staff Nurse/ Staff Midwife	+0.4%	+40.5	-3.7	-0.4	+11.6	-4.3	+7.9	-11.9	+14.6	-11.9	+20.2	+18.5
Nursing/ Midwifery Student	+0.1%	+8.1	-2.9	-6.7	+5.5	-2.0	+3.9	+1.7	+0.8	+5.1	+3.8	-1.0
Nursing/ Midwifery other	+0.0%	+4.0	+0.5	+1.5	-1.0	+2.0	+0.2	+0.3	+1.3	+0.0	-0.9	+0.1
<b>Nursing &amp; Midwifery</b>	<b>+0.2%</b>	<b>+25.8</b>	<b>-16.3</b>	<b>-6.5</b>	<b>+18.1</b>	<b>-5.9</b>	<b>-4.2</b>	<b>+5.2</b>	<b>+17.5</b>	<b>-19.3</b>	<b>+16.5</b>	<b>+20.8</b>
Therapy Professions	-0.1%	-8.0	-4.0	+3.6	-3.0	-4.8	-0.1	-1.2	+4.0	+0.6	-4.3	+1.2
Social Care	0.0%	-4.2	+1.4	+0.1	-0.1	-0.4	+0.3	-2.6	-0.8	-1.9	+0.0	-0.1
Social Workers	-0.1%	-6.6	+2.4	+5.5	-0.1	-2.9	-0.6	-8.5	+1.5	-1.8	-4.9	+2.8
Psychologists	-0.1%	-11.7	-1.7	-9.8	-5.2	+1.6	-2.6	+4.6	-3.4	+0.2	+5.6	-1.0
Pharmacy	0.0%	-1.0	+0.0	+0.8	+0.1	-0.9			+0.0	+0.0	+1.3	-2.2



H&SC, Other	+0.2%	+18.1	+4.6	+10.6	-0.2	-0.2	-3.9	+4.9	+3.2	-0.9	-0.1	
<b>Health &amp; Social Care Professionals</b>	<b>-0.1%</b>	<b>-13.4</b>	<b>+2.6</b>	<b>+10.7</b>	<b>-8.5</b>	<b>-7.7</b>	<b>-6.9</b>	<b>-2.8</b>	<b>+4.5</b>	<b>-3.8</b>	<b>-2.4</b>	<b>+0.7</b>
Management (VIII & above)	0.0%	-1.5	+0.3	+1.0	+0.0	-2.0	-0.0	+0.0	+0.0	+0.0	-0.1	-0.8
Administrative/ Supervisory (V to VII)	0.0%	-3.0	-0.5	+6.7	-2.1	-1.0	-1.4	-3.0	-1.3	+1.3	-1.0	-0.6
Clerical (III & IV)	-0.2%	-25.6	-7.0	-2.5	-2.3	+12.2	-3.2	+1.7	-5.4	-12.7	-4.9	-1.4
<b>Management &amp; Administrative</b>	<b>-0.3%</b>	<b>-30.1</b>	<b>-7.2</b>	<b>+5.2</b>	<b>-4.4</b>	<b>+9.2</b>	<b>-4.6</b>	<b>-1.3</b>	<b>-6.7</b>	<b>-11.4</b>	<b>-6.0</b>	<b>-2.8</b>
Support	-0.4%	-37.5	-8.2	-6.3	+0.4	-7.0	-10.9	-5.4	-0.2	-1.3	+5.0	-3.7
Maintenance/ Technical	0.0%	-4.3	-0.7	-1.0	+3.0	+0.0	-2.5	-2.7	-1.0	-0.9	+0.5	+1.0
<b>General Support</b>	<b>-0.4%</b>	<b>-41.8</b>	<b>-8.9</b>	<b>-7.3</b>	<b>+3.4</b>	<b>-7.0</b>	<b>-13.4</b>	<b>-8.2</b>	<b>-1.2</b>	<b>-2.1</b>	<b>+5.5</b>	<b>-2.7</b>
Health Care Assistants	-0.2%	-21.6	+0.2	-6.0	+7.8	-14.2	-0.7	+6.8	+1.8	-3.4	-13.3	-0.7
Care, other	-0.2%	-16.3	-1.0	-12.6	-0.1	+0.2	+1.8	-1.0	-2.3	-0.1	-1.1	-0.3
<b>Patient &amp; Client Care</b>	<b>-0.4%</b>	<b>-37.9</b>	<b>-0.8</b>	<b>-18.5</b>	<b>+7.7</b>	<b>-14.0</b>	<b>+1.1</b>	<b>+5.8</b>	<b>-0.5</b>	<b>-3.4</b>	<b>-14.4</b>	<b>-0.9</b>



## Year to Date Summary

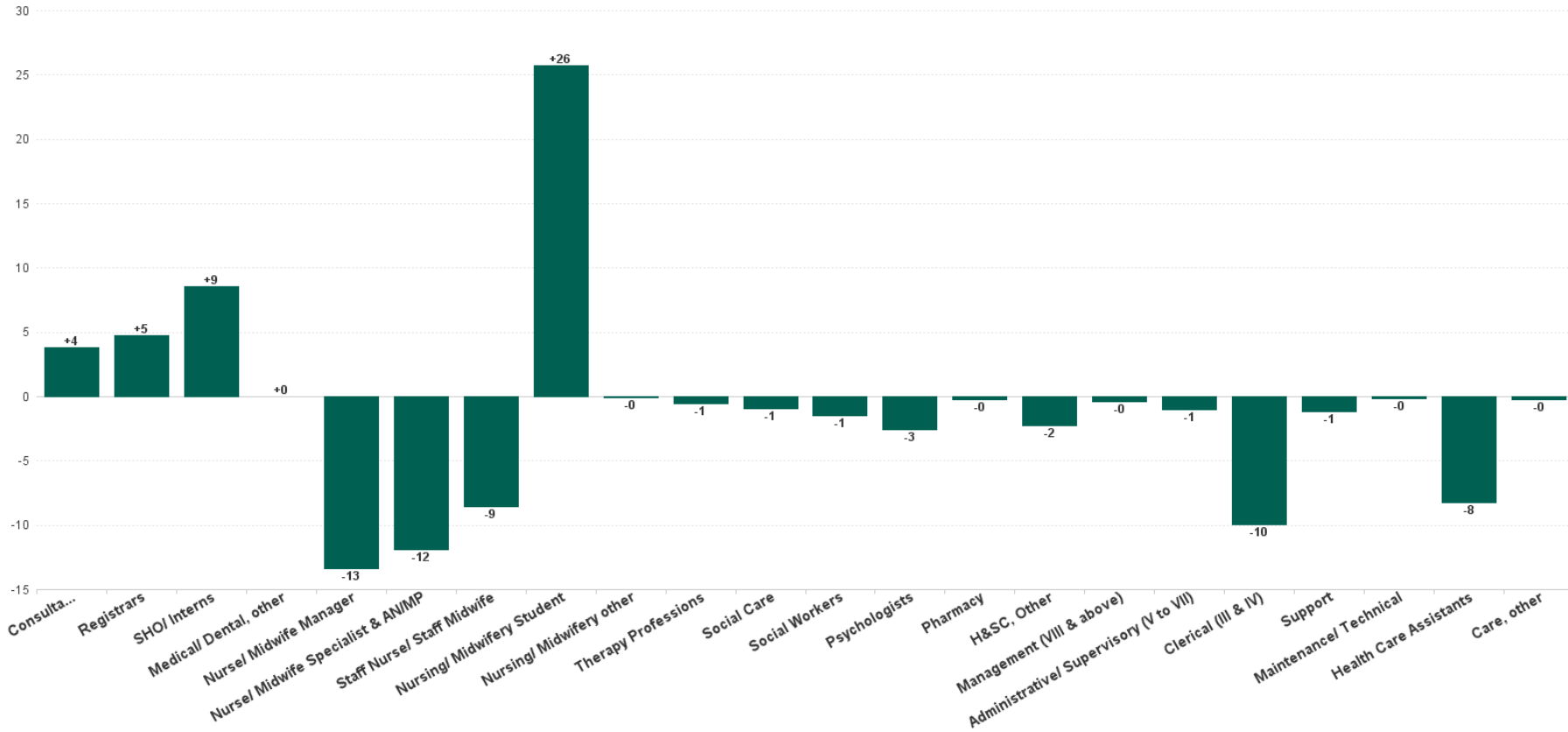
	% WTE change since DEC 2023	WTE change since DEC 2023	CHO 1	CHO 2	CHO 3	CHO 4	CHO 5	CHO 6	CHO 7	CHO 8	CHO 9	other Community Services
<b>Total</b>	<b>-1.7%</b>	<b>-187.1</b>	<b>-18.3</b>	<b>-29.5</b>	<b>-19.5</b>	<b>-49.0</b>	<b>-23.4</b>	<b>-12.0</b>	<b>+16.7</b>	<b>-9.2</b>	<b>-31.5</b>	<b>-11.4</b>
Consultants	+2.8%	+12.1	+3.9	+1.1	-1.1	+5.2	-1.1	+0.8	+8.1	+2.6	-7.8	+0.4
Registrars	+3.0%	+10.1	+0.0	+2.9	+6.5	-1.1	+0.6	+2.5	+4.1	+5.7	-8.1	-3.0
SHO/ Interns	+5.0%	+14.8	+2.3	+0.6	-8.0	+3.8	+5.6	+0.0	+0.5	-1.9	+9.9	+2.0
Medical/ Dental, other	+0.0%	+0.0				+0.0	+0.0					
<b>Medical &amp; Dental</b>	<b>+3.5%</b>	<b>+36.9</b>	<b>+6.1</b>	<b>+4.6</b>	<b>-2.6</b>	<b>+7.9</b>	<b>+5.0</b>	<b>+3.3</b>	<b>+12.7</b>	<b>+6.5</b>	<b>-6.0</b>	<b>-0.6</b>
Nurse/ Midwife Manager	-6.0%	-74.0	-7.9	-7.1	-4.4	+0.2	-3.7	-11.7	+1.2	-18.1	-12.3	-10.2
Nurse/ Midwife Specialist & AN/MP	+1.6%	+11.7	+0.0	-2.6	-3.2	-5.4	-7.3	+20.4	-3.4	+3.8	+2.0	+7.5
Staff Nurse/ Staff Midwife	-1.7%	-48.8	-1.8	-3.4	-11.2	-38.4	+3.1	-7.6	+13.9	-18.2	+4.6	+10.2
Nursing/ Midwifery Student	+171.6%	+118.9	+5.0	+7.2	+21.5	+21.0	+5.8	+5.4	+13.0	+31.9	+11.2	-3.0
Nursing/ Midwifery other	+9.5%	+3.1	-0.4	+1.0	-1.0	+2.0	-0.0	+0.3	+2.1	+0.0	-0.8	+0.0
<b>Nursing &amp; Midwifery</b>	<b>+0.2%</b>	<b>+10.9</b>	<b>-5.0</b>	<b>-4.9</b>	<b>+1.7</b>	<b>-20.6</b>	<b>-2.2</b>	<b>+6.7</b>	<b>+26.7</b>	<b>-0.6</b>	<b>+4.7</b>	<b>+4.4</b>
Therapy Professions	-6.6%	-29.2	-5.6	-2.8	-2.0	-6.1	-0.3	-3.6	-2.4	+0.9	-6.4	-1.0
Social Care	-8.1%	-5.1	+1.2	-0.9	+0.0	+0.8	+0.2	-1.4	-2.2	-1.9	+0.0	-1.1
Social Workers	-4.7%	-20.4	+0.0	+2.8	-1.2	-4.6	-2.6	-4.5	-4.0	-2.1	-5.0	+0.8
Psychologists	-5.1%	-23.7	-0.7	-4.4	-5.6	-5.8	-1.7	-3.4	-1.3	-0.2	+0.4	-1.0
Pharmacy	-12.2%	-3.1	-0.2	+0.0	+0.1	-0.8			-0.1	-0.0	+0.0	-2.3
H&SC, Other	-1.7%	-2.6	+3.2	-0.8	+0.3	-1.0	-1.9	-1.1	+0.7	-0.9	-1.1	
<b>Health &amp; Social Care Professionals</b>	<b>-5.3%</b>	<b>-84.1</b>	<b>-2.0</b>	<b>-6.1</b>	<b>-8.3</b>	<b>-17.4</b>	<b>-6.3</b>	<b>-13.9</b>	<b>-9.2</b>	<b>-4.2</b>	<b>-12.1</b>	<b>-4.5</b>
Management (VIII & above)	-0.2%	-0.1	+0.1	+1.0	+0.0	-1.0	-0.0	+0.0	+0.9	+0.0	-0.1	-1.0
Administrative/ Supervisory (V to VII)	-3.1%	-10.0	+0.4	+4.0	-1.8	-2.8	-1.8	-1.9	-2.4	-1.1	-1.2	-1.5
Clerical (III & IV)	-6.3%	-51.4	-8.0	-9.0	-3.2	-1.5	-7.4	-0.7	-7.4	-7.2	-6.0	-1.0
<b>Management &amp; Administrative</b>	<b>-5.0%</b>	<b>-61.5</b>	<b>-7.6</b>	<b>-3.9</b>	<b>-5.0</b>	<b>-5.2</b>	<b>-9.2</b>	<b>-2.6</b>	<b>-8.9</b>	<b>-8.3</b>	<b>-7.3</b>	<b>-3.5</b>
Support	-5.0%	-26.4	-6.4	-3.5	+0.1	-6.0	-7.7	-5.7	+0.8	+0.1	+3.9	-2.1



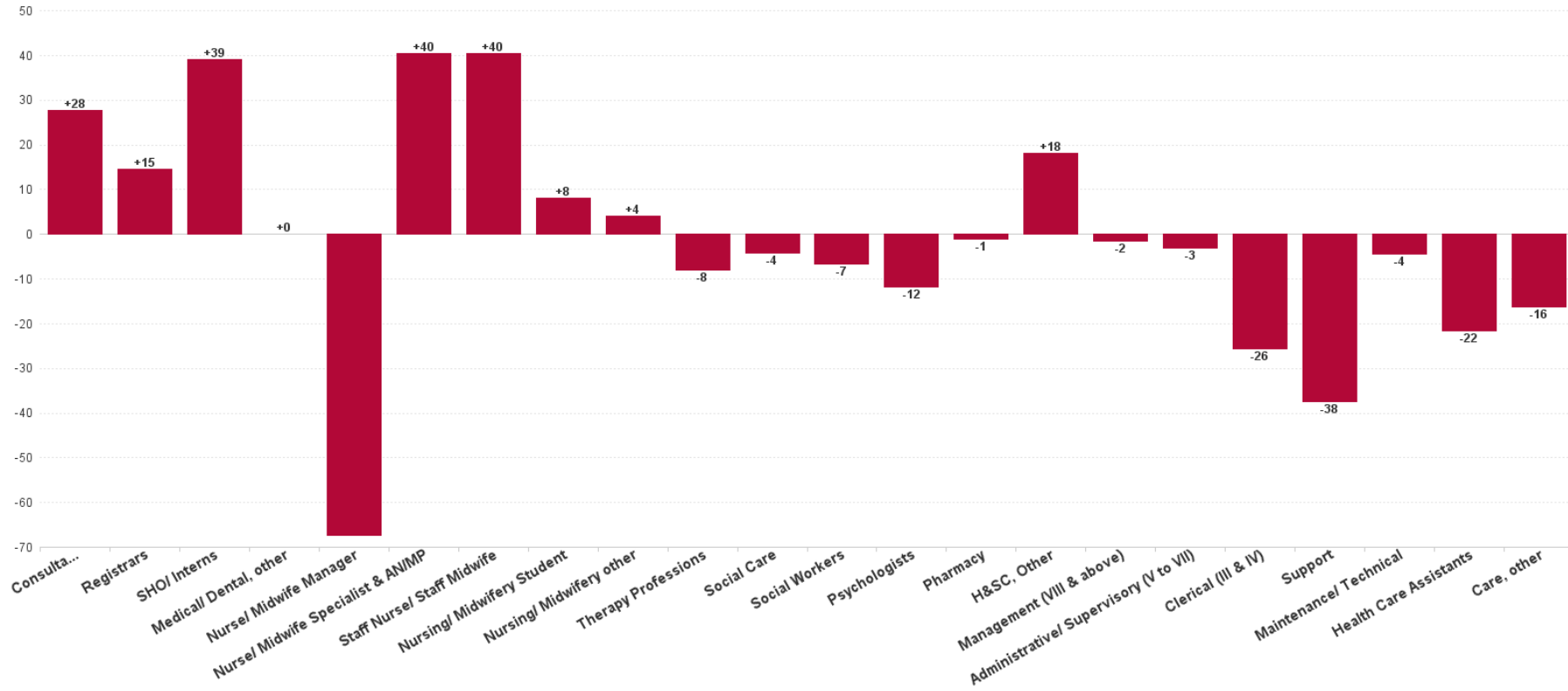
Maintenance/ Technical	+1.0%	+1.3	-0.5	-0.4	+1.0	+0.0	-1.0	-1.8	+0.0	-0.9	+2.0	+2.8
<b>General Support</b>	<b>-3.8%</b>	<b>-25.1</b>	<b>-6.8</b>	<b>-3.8</b>	<b>+1.1</b>	<b>-6.0</b>	<b>-8.7</b>	<b>-7.5</b>	<b>+0.8</b>	<b>-0.8</b>	<b>+5.9</b>	<b>+0.7</b>
Health Care Assistants	-4.3%	-47.3	-2.0	-6.4	-6.3	-7.6	-3.9	+3.5	-1.2	-1.3	-14.5	-7.6
Care, other	-7.3%	-16.8	-1.1	-8.9	-0.1	+0.0	+1.9	-1.5	-4.2	-0.5	-2.2	-0.3
<b>Patient &amp; Client Care</b>	<b>-4.8%</b>	<b>-64.1</b>	<b>-3.1</b>	<b>-15.3</b>	<b>-6.4</b>	<b>-7.6</b>	<b>-2.0</b>	<b>+2.0</b>	<b>-5.4</b>	<b>-1.8</b>	<b>-16.8</b>	<b>-7.9</b>



Previous Month Summary Chart: Change since AUG 2024



Previous Year Summary Chart: Change since SEP 2023



YTD Summary Chart: Change since DEC 2023

