

# Mental Health Employment Report : OCT 2024

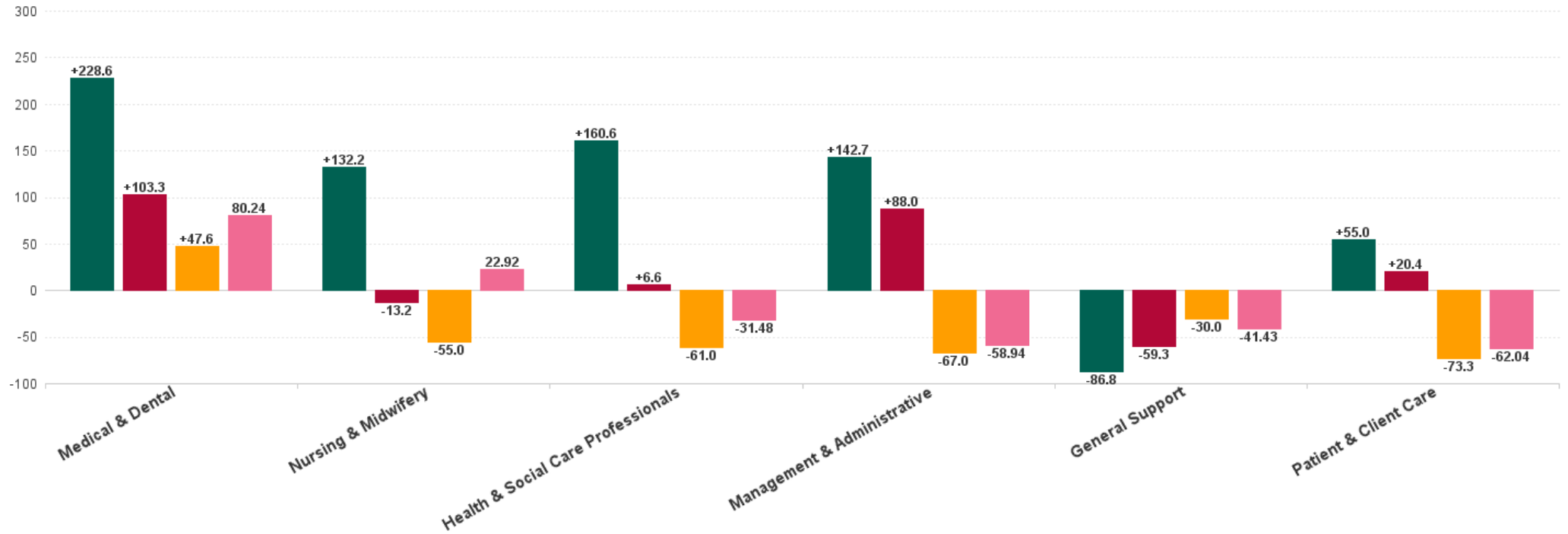
## Mental Health Employment Report by Staff Group

OCT 2024	WTE DEC 2019	WTE DEC 2022	WTE DEC 2023	WTE SEP 2024	WTE OCT 2024	WTE Change 2023	WTE Change 2024	WTE Change SEP 2024	WTE Change Dec 2022 to OCT 2024	WTE Change Dec 2019 to OCT 2024	% WTE Change Dec 2022 to OCT 2024	No. OCT 2024
<b>Overall</b>	<b>9,967</b>	<b>10,453</b>	<b>10,838</b>	<b>10,651</b>	<b>10,599</b>	<b>+385</b>	<b>-239</b>	<b>-52</b>	<b>+146</b>	<b>+632</b>	<b>+1.4%</b>	<b>11,612</b>
Consultants	353	397	430	442	448	+33	+18	+6	+51	+96	+12.9%	490
Registrars	269	345	339	349	350	-6	+11	+1	+5	+81	+1.5%	363
SHO/ Interns	261	267	297	312	315	+30	+18	+3	+48	+54	+17.9%	326
Medical/ Dental, other	5	4	3	3	3	-1	+0	+0	-1	-2	-24.0%	6
<b>Medical &amp; Dental</b>	<b>888</b>	<b>1,013</b>	<b>1,069</b>	<b>1,105</b>	<b>1,116</b>	<b>+56</b>	<b>+48</b>	<b>+11</b>	<b>+103</b>	<b>+229</b>	<b>+10.2%</b>	<b>1,185</b>
Nurse/ Midwife Manager	1,201	1,245	1,237	1,163	1,171	-8	-66	+8	-74	-30	-6.0%	1,226
Nurse/ Midwife Specialist & AN/MP	460	631	734	746	747	+104	+13	+1	+116	+287	+18.4%	806
Staff Nurse/ Staff Midwife	3,002	2,948	2,892	2,843	2,848	-56	-44	+5	-100	-155	-3.4%	3,101
Pre-registration Nurse/ Midwife Intern	25	26	14	116	37	-13	+24	-78	+11	+12	+41.0%	112
Post-registration Nurse/ Midwife Student	1									-1	-100.0%	
Nursing/ Midwifery awaiting registration	57	39	56	72	70	+17	+15	-2	+32	+13	+81.7%	91
Nursing/ Midwifery Student	83	65	69	188	108	+4	+38	-81	+42	+25	+65.2%	203
Nursing/ Midwifery other	32	34	33	36	37	-2	+4	+1	+2	+5	+6.7%	42
<b>Nursing &amp; Midwifery</b>	<b>4,778</b>	<b>4,924</b>	<b>4,965</b>	<b>4,976</b>	<b>4,910</b>	<b>+42</b>	<b>-55</b>	<b>-66</b>	<b>-13</b>	<b>+132</b>	<b>-0.3%</b>	<b>5,378</b>
Speech & Language Therapists	62	68	66	65	64	-2	-2	-1	-4	+2	-5.7%	77
Podiatrists & Chiropodists	1	1				-1			-1	-1	-100.0%	
Physiotherapists	2	3	1	1	1	-2	-0	-0	-2	-1	-70.4%	2
Occupational Therapists	337	346	353	325	330	+7	-23	+5	-16	-6	-4.6%	367
Dietitians	19	18	24	24	24	+6	-0	+0	+6	+5	+32.9%	26
Therapy Professions	420	435	444	415	419	+9	-25	+4	-17	-2	-3.8%	472
Social Care	74	72	63	58	58	-9	-5	+1	-13	-15	-18.7%	67
Social Workers	350	414	431	410	419	+17	-12	+8	+5	+68	+1.2%	465
Psychologists	394	448	467	444	454	+20	-14	+10	+6	+59	+1.3%	501
Pharmacy	19	19	25	22	22	+6	-3	-0	+3	+4	+14.6%	30
H&SC, Other	107	130	155	153	153	+25	-2	+1	+23	+46	+17.7%	176
<b>Health &amp; Social Care Professionals</b>	<b>1,364</b>	<b>1,518</b>	<b>1,586</b>	<b>1,502</b>	<b>1,525</b>	<b>+68</b>	<b>-61</b>	<b>+23</b>	<b>+7</b>	<b>+161</b>	<b>+0.4%</b>	<b>1,711</b>
Management (VIII & above)	58	75	73	73	73	-1	-0	-0	-2	+15	-2.0%	74
Administrative/ Supervisory (V to VII)	238	287	329	319	318	+42	-10	-0	+31	+81	+10.9%	336
Clerical (III & IV)	717	707	821	770	765	+115	-57	-5	+58	+47	+8.2%	853
<b>Management &amp; Administrative</b>	<b>1,014</b>	<b>1,068</b>	<b>1,223</b>	<b>1,162</b>	<b>1,156</b>	<b>+155</b>	<b>-67</b>	<b>-5</b>	<b>+88</b>	<b>+143</b>	<b>+8.2%</b>	<b>1,263</b>
Support	585	556	530	504	500	-25	-30	-4	-56	-85	-10.0%	566
Maintenance/ Technical	127	129	125	126	125	-4	+0	-1	-4	-2	-2.9%	129
<b>General Support</b>	<b>712</b>	<b>685</b>	<b>655</b>	<b>630</b>	<b>625</b>	<b>-29</b>	<b>-30</b>	<b>-5</b>	<b>-59</b>	<b>-87</b>	<b>-8.7%</b>	<b>695</b>
Health Care Assistants	996	1,030	1,111	1,063	1,055	+81	-55	-8	+25	+60	+2.4%	1,131
Care, other	216	216	229	212	211	+13	-18	-1	-5	-5	-2.2%	249
<b>Patient &amp; Client Care</b>	<b>1,212</b>	<b>1,246</b>	<b>1,340</b>	<b>1,276</b>	<b>1,267</b>	<b>+94</b>	<b>-73</b>	<b>-9</b>	<b>+20</b>	<b>+55</b>	<b>+1.6%</b>	<b>1,380</b>



# WTE Change by Staff Category

■ WTE change since DEC 2019 
 ■ WTE change since DEC 2022 
 ■ WTE change since DEC 2023 
 ■ WTE change since OCT 2023

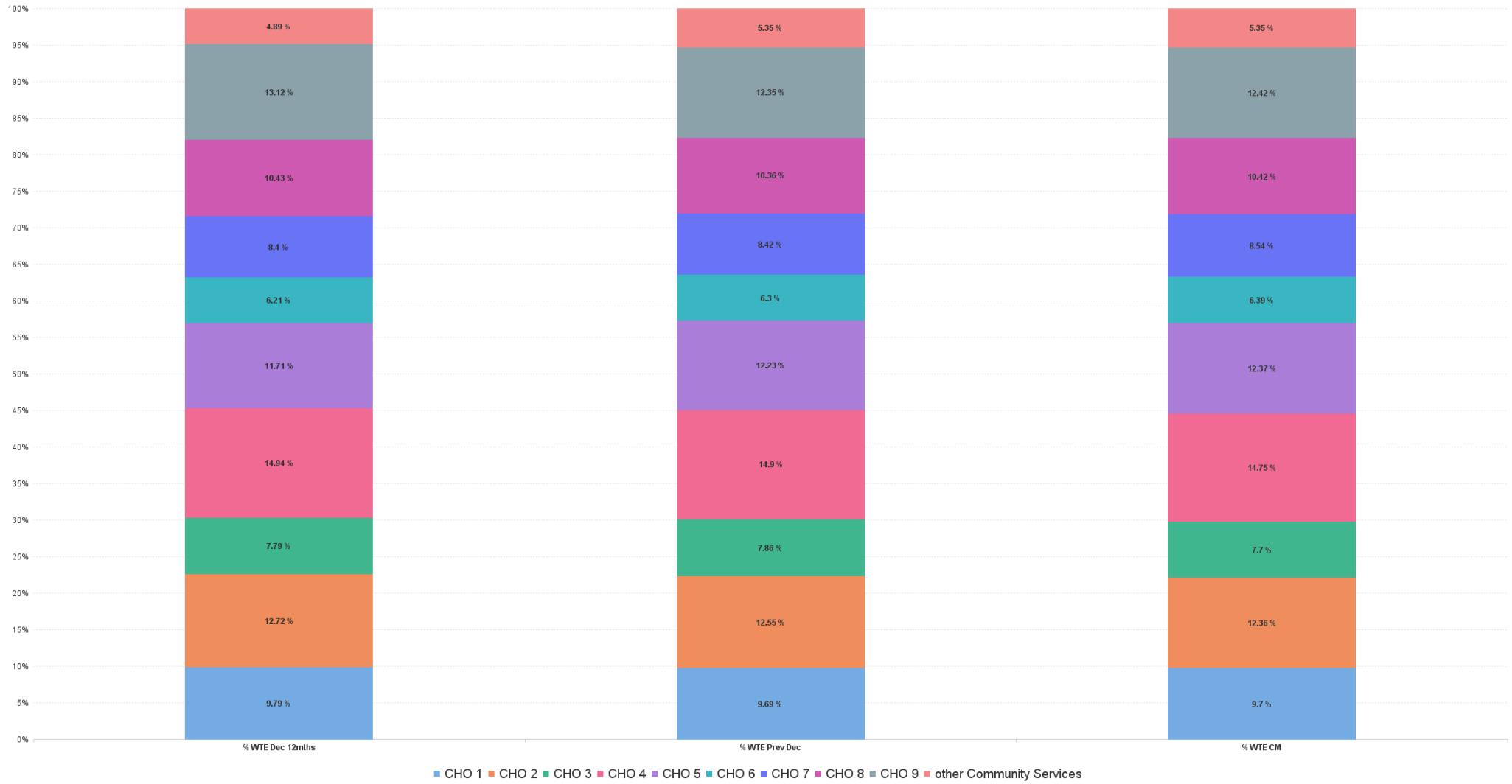


## Mental Health Report by CHO: OCT 2024

OCT 2024	WTE DEC 2019	WTE DEC 2022	WTE DEC 2023	WTE SEP 2024	WTE OCT 2024	WTE Change 2023	WTE Change 2024	WTE Change SEP 2024	WTE Change Dec 2022 to OCT 2024	WTE Change Dec 2019 to OCT 2024	% WTE Change Dec 2022 to OCT 2024	No. OCT 2024
<b>Overall</b>	<b>9,967</b>	<b>10,453</b>	<b>10,838</b>	<b>10,651</b>	<b>10,599</b>	<b>+385</b>	<b>-239</b>	<b>-52</b>	<b>+146</b>	<b>+632</b>	<b>1.40%</b>	<b>11,612</b>
CHO 1	953	1,024	1,050	1,032	1,028	+26	-22	-4	+4	+75	0.43%	1,108
CHO 2	1,308	1,329	1,361	1,331	1,311	+31	-50	-21	-19	+2	-1.40%	1,436
CHO 3	795	814	852	832	816	+37	-36	-16	+2	+21	0.22%	888
CHO 4	1,499	1,562	1,615	1,566	1,564	+54	-51	-2	+2	+65	0.14%	1,747
CHO 5	1,177	1,224	1,325	1,302	1,311	+101	-14	+9	+86	+133	7.06%	1,455
CHO 6	593	650	683	671	678	+33	-5	+7	+28	+85	4.35%	754
CHO 7	835	879	912	929	905	+34	-7	-24	+27	+70	3.04%	993
CHO 8	1,098	1,091	1,123	1,113	1,104	+32	-19	-9	+13	+6	1.23%	1,209
CHO 9	1,272	1,371	1,338	1,307	1,316	-33	-22	+10	-55	+45	-3.98%	1,434
other Community Services	438	511	580	568	567	+69	-13	-1	+56	+129	10.92%	588



### % Total by CHO



# Mental Health Employment Report by HSE/S38: OCT 2024

OCT 2024	WTE DEC 2019	WTE DEC 2022	WTE DEC 2023	WTE SEP 2024	WTE OCT 2024	WTE Change 2023	WTE Change 2024	WTE Change SEP 2024	WTE Change Dec 2022 to OCT 2024	WTE Change Dec 2019 to OCT 2024	% WTE Change Dec 2022 to OCT 2024	No. OCT 2024
<b>Overall</b>	<b>9,967</b>	<b>10,453</b>	<b>10,838</b>	<b>10,651</b>	<b>10,599</b>	<b>+385</b>	<b>-239</b>	<b>-52</b>	<b>+146</b>	<b>+632</b>	<b>1.40%</b>	<b>11,612</b>
Health Service Executive	9,526	10,023	10,443	10,261	10,206	+421	-238	-56	+183	+680	1.82%	11,154
Section 38 Voluntary Agencies	441	431	395	390	394	-36	-1	+4	-37	-48	-8.59%	458



## Mental Health Employment Report by HSE: OCT 2024

OCT 2024	WTE DEC 2019	WTE DEC 2022	WTE DEC 2023	WTE SEP 2024	WTE OCT 2024	WTE Change 2023	WTE Change 2024	WTE Change SEP 2024	WTE Change Dec 2022 to OCT 2024	WTE Change Dec 2019 to OCT 2024	% WTE Change Dec 2022 to OCT 2024	No. OCT 2024
<b>Total HSE</b>	<b>9,526</b>	<b>10,023</b>	<b>10,443</b>	<b>10,261</b>	<b>10,206</b>	<b>+421</b>	<b>-238</b>	<b>-56</b>	<b>+183</b>	<b>+680</b>	<b>+1.8%</b>	<b>11,154</b>
Consultants	333	372	401	413	419	+29	+17	+6	+47	+86	+12.6%	454
Registrars	250	325	322	327	328	-3	+6	+1	+3	+78	+1.0%	339
SHO/ Interns	255	260	288	304	307	+28	+19	+3	+47	+52	+18.0%	317
Medical/ Dental, other	5	4	3	3	3	-1	+0	+0	-1	-2	-24.0%	6
<b>Medical &amp; Dental</b>	<b>843</b>	<b>961</b>	<b>1,014</b>	<b>1,046</b>	<b>1,057</b>	<b>+53</b>	<b>+42</b>	<b>+11</b>	<b>+96</b>	<b>+214</b>	<b>+10.0%</b>	<b>1,116</b>
Nurse/ Midwife Manager	1,163	1,211	1,206	1,134	1,142	-6	-64	+8	-70	-21	-5.7%	1,194
Nurse/ Midwife Specialist & AN/MP	453	620	721	733	734	+101	+12	+1	+114	+280	+18.3%	789
Staff Nurse/ Staff Midwife	2,879	2,838	2,820	2,771	2,768	-19	-52	-3	-71	-111	-2.5%	3,017
Nursing/ Midwifery awaiting registration	57	38	56	67	69	+18	+14	+2	+32	+12	+83.8%	90
Post-registration Nurse/ Midwife Student	1									-1	-100.0%	
Pre-registration Nurse/ Midwife Intern	18	18	7	116	37	-11	+30	-78	+19	+19	+102.2%	112
Nursing/ Midwifery Student	76	56	63	183	107	+7	+44	-77	+50	+31	+89.9%	202
Nursing/ Midwifery other	29	32	33	33	34	+1	+2	+1	+2	+5	+7.3%	39
<b>Nursing &amp; Midwifery</b>	<b>4,601</b>	<b>4,758</b>	<b>4,842</b>	<b>4,854</b>	<b>4,784</b>	<b>+84</b>	<b>-58</b>	<b>-70</b>	<b>+26</b>	<b>+183</b>	<b>+0.6%</b>	<b>5,241</b>
Dietitians	19	18	23	23	23	+6	-0	+0	+5	+4	+31.0%	25
Occupational Therapists	322	330	339	313	317	+9	-23	+4	-13	-6	-4.1%	349
Physiotherapists	1	2	1	1	1	-1	-0	-0	-1	-0	-63.9%	1
Podiatrists & Chiropractors	1	1				-1			-1	-1	-100.0%	
Speech & Language Therapists	46	57	57	56	54	-0	-2	-1	-3	+8	-4.8%	65
Therapy Professions	389	407	420	392	395	+13	-26	+3	-12	+6	-3.0%	440
Social Care	48	44	39	36	35	-5	-5	-1	-9	-13	-20.6%	40
Social Workers	331	394	410	394	401	+17	-10	+7	+7	+70	+1.9%	445
Psychologists	379	423	440	419	428	+17	-12	+10	+5	+50	+1.2%	472
Pharmacy	17	17	23	20	20	+5	-3	-0	+2	+3	+13.3%	27
H&SC, Other	102	130	148	149	151	+18	+3	+2	+21	+49	+16.3%	173
<b>Health &amp; Social Care Professionals</b>	<b>1,265</b>	<b>1,415</b>	<b>1,481</b>	<b>1,409</b>	<b>1,430</b>	<b>+66</b>	<b>-52</b>	<b>+21</b>	<b>+15</b>	<b>+164</b>	<b>+1.0%</b>	<b>1,597</b>
Management (VIII & above)	56	73	70	70	70	-2	-0	-0	-3	+14	-3.5%	71
Administrative/ Supervisory (V to VII)	217	264	308	295	295	+45	-13	-0	+31	+78	+11.9%	309
Clerical (III & IV)	673	670	781	729	724	+111	-57	-5	+54	+51	+8.0%	804
<b>Management &amp; Administrative</b>	<b>946</b>	<b>1,006</b>	<b>1,160</b>	<b>1,094</b>	<b>1,089</b>	<b>+153</b>	<b>-71</b>	<b>-6</b>	<b>+82</b>	<b>+143</b>	<b>+8.2%</b>	<b>1,184</b>
Support	547	523	501	477	473	-22	-27	-4	-50	-74	-9.5%	528
Maintenance/ Technical	121	123	118	120	120	-5	+2	-0	-3	-1	-2.4%	123
<b>General Support</b>	<b>668</b>	<b>646</b>	<b>618</b>	<b>597</b>	<b>593</b>	<b>-27</b>	<b>-25</b>	<b>-4</b>	<b>-53</b>	<b>-75</b>	<b>-8.1%</b>	<b>651</b>
Health Care Assistants	990	1,024	1,103	1,052	1,045	+78	-58	-7	+21	+55	+2.0%	1,120
Care, other	213	213	225	209	208	+13	-17	-1	-4	-5	-2.1%	245
<b>Patient &amp; Client Care</b>	<b>1,203</b>	<b>1,237</b>	<b>1,328</b>	<b>1,261</b>	<b>1,253</b>	<b>+91</b>	<b>-75</b>	<b>-8</b>	<b>+16</b>	<b>+50</b>	<b>+1.3%</b>	<b>1,365</b>

## Mental Health Employment Report by S38 Vols: OCT 2024

OCT 2024	WTE DEC 2019	WTE DEC 2022	WTE DEC 2023	WTE SEP 2024	WTE OCT 2024	WTE Change 2023	WTE Change 2024	WTE Change SEP 2024	WTE Change Dec 2022 to OCT 2024	WTE Change Dec 2019 to OCT 2024	% WTE Change Dec 2022 to OCT 2024	No. OCT 2024
<b>Total S38 Vols</b>	<b>441</b>	<b>431</b>	<b>395</b>	<b>390</b>	<b>394</b>	<b>-36</b>	<b>-1</b>	<b>+4</b>	<b>-37</b>	<b>-48</b>	<b>-8.59%</b>	<b>458</b>
Consultants	20	25	29	30	29	+4	+1	-0	+4	+10	16.77%	36
Registrars	19	20	17	22	22	-3	+5	+0	+2	+3	10.83%	24
SHO/ Interns	6	7	9	8	8	+2	-1	+0	+1	+2	15.43%	9
<b>Medical &amp; Dental</b>	<b>45</b>	<b>52</b>	<b>54</b>	<b>60</b>	<b>60</b>	<b>+2</b>	<b>+5</b>	<b>-0</b>	<b>+7</b>	<b>+15</b>	<b>14.32%</b>	<b>69</b>
Nurse/ Midwife Manager	38	34	32	30	29	-2	-3	-0	-5	-9	-13.83%	32
Nurse/ Midwife Specialist & AN/MP	7	11	13	13	13	+2	+0	+0	+3	+7	24.72%	17
Staff Nurse/ Staff Midwife	123	109	72	72	80	-37	+8	+8	-29	-43	-26.87%	84
Nursing/ Midwifery awaiting registration		1		5	1	-1	+1	-4	+0	+1	0.00%	1
Pre-registration Nurse/ Midwife Intern	7	8	7			-2	-7		-8	-7	-100.00%	
Nursing/ Midwifery Student	7	9	7	5	1	-3	-6	-4	-8	-6	-88.89%	1
Nursing/ Midwifery other	3	3		3	3	-3	+3	+0	+0	+0	0.00%	3
<b>Nursing &amp; Midwifery</b>	<b>177</b>	<b>166</b>	<b>124</b>	<b>122</b>	<b>126</b>	<b>-42</b>	<b>+3</b>	<b>+4</b>	<b>-39</b>	<b>-51</b>	<b>-23.81%</b>	<b>137</b>
Dietitians	1	1	1	1	1	+1	+0	+0	+1	+1	100.00%	1
Occupational Therapists	14	16	14	13	13	-2	-0	+1	-3	-1	-16.32%	18
Physiotherapists	1	1	0	0	0	-1	+0	+0	-1	-1	-81.08%	1
Speech & Language Therapists	16	10	9	9	9	-2	+0	+0	-1	-6	-11.59%	12
Therapy Professions	31	28	24	23	24	-4	+0	+1	-4	-8	-15.05%	32
Social Care	25	28	24	22	24	-4	-0	+1	-4	-2	-15.73%	27
Social Workers	20	20	20	17	18	+0	-3	+1	-2	-2	-11.93%	20
Psychologists	16	25	27	25	25	+2	-2	+0	+1	+9	2.64%	29
Pharmacy	2	2	2	2	2	+0	+0	+0	+0	+1	27.78%	3
H&SC, Other	5	0	7	3	2	+7	-5	-1	+2	-2	416.67%	3
<b>Health &amp; Social Care Professionals</b>	<b>99</b>	<b>103</b>	<b>104</b>	<b>93</b>	<b>95</b>	<b>+1</b>	<b>-9</b>	<b>+2</b>	<b>-8</b>	<b>-4</b>	<b>-7.65%</b>	<b>114</b>
Management (VIII & above)	2	2	3	3	3	+1	+0	+0	+1	+1	50.00%	3
Administrative/ Supervisory (V to VII)	21	23	20	23	24	-3	+3	+0	+0	+2	0.30%	27
Clerical (III & IV)	45	36	40	41	41	+4	+1	+0	+5	-4	12.45%	49
<b>Management &amp; Administrative</b>	<b>68</b>	<b>62</b>	<b>64</b>	<b>67</b>	<b>68</b>	<b>+2</b>	<b>+4</b>	<b>+0</b>	<b>+6</b>	<b>-0</b>	<b>9.06%</b>	<b>79</b>
Support	38	33	30	27	27	-3	-3	-0	-6	-11	-18.23%	38
Maintenance/ Technical	6	6	7	6	5	+1	-2	-1	-1	-1	-13.17%	6
<b>General Support</b>	<b>44</b>	<b>39</b>	<b>37</b>	<b>33</b>	<b>32</b>	<b>-2</b>	<b>-5</b>	<b>-1</b>	<b>-7</b>	<b>-12</b>	<b>-17.45%</b>	<b>44</b>
Health Care Assistants	6	6	8	11	10	+2	+2	-1	+4	+4	75.56%	11
Care, other	3	3	4	3	3	+0	-1	-0	-0	+0	-10.09%	4
<b>Patient &amp; Client Care</b>	<b>9</b>	<b>9</b>	<b>12</b>	<b>14</b>	<b>13</b>	<b>+3</b>	<b>+1</b>	<b>-1</b>	<b>+4</b>	<b>+5</b>	<b>43.98%</b>	<b>15</b>



## Mental Health Employment Report by Grade Group: OCT 2024

### CHO 1

OCT 2024	WTE DEC 2019	WTE DEC 2022	WTE DEC 2023	WTE SEP 2024	WTE OCT 2024	WTE Change 2023	WTE Change 2024	WTE Change SEP 2024	WTE Change Dec 2022 to OCT 2024	WTE Change Dec 2019 to OCT 2024	% WTE Change Dec 2022 to OCT 2024	No. OCT 2024
<b>Total CHO 1</b>	<b>953</b>	<b>1024</b>	<b>1050</b>	<b>1032</b>	<b>1028</b>	<b>+26</b>	<b>-22</b>	<b>-4</b>	<b>+4</b>	<b>+75</b>	<b>+0.4%</b>	<b>1,108</b>
Consultants	31	34	36	40	41	+2	+5	+1	+7	+10	+22.2%	44
Registrars	24	35	39	39	40	+4	+1	+1	+5	+16	+15.8%	42
SHO/ Interns	25	21	23	25	26	+2	+3	+0	+5	+1	+24.1%	26
<b>Medical &amp; Dental</b>	<b>81</b>	<b>89</b>	<b>98</b>	<b>104</b>	<b>107</b>	<b>+9</b>	<b>+9</b>	<b>+3</b>	<b>+18</b>	<b>+27</b>	<b>+20.1%</b>	<b>112</b>
Nurse/ Midwife Manager	117	118	120	112	115	+2	-5	+3	-3	-2	-2.6%	119
Nurse/ Midwife Specialist & AN/MP	67	91	101	101	98	+9	-2	-2	+7	+31	+7.7%	106
Staff Nurse/ Staff Midwife	297	294	288	286	287	-6	-1	+1	-7	-10	-2.3%	305
<i>Nursing/ Midwifery awaiting registration</i>		3	5			+2	-5	-5	-3		-100.0%	
<i>Pre-registration Nurse/ Midwife Intern</i>		2	3	13	2	+1	-1	-1	-0	+2	-12.2%	7
Nursing/ Midwifery Student		5	8	13	2	+3	-6	-11	-3	+2	-66.9%	7
Nursing/ Midwifery other		2	2	2	2	-0	-0	+0	-0	+2	-2.1%	2
<b>Nursing &amp; Midwifery</b>	<b>482</b>	<b>510</b>	<b>518</b>	<b>513</b>	<b>504</b>	<b>+8</b>	<b>-14</b>	<b>-9</b>	<b>-6</b>	<b>+22</b>	<b>-1.2%</b>	<b>539</b>
Therapy Professions	36	40	41	35	38	+1	-3	+3	-2	+3	-5.4%	42
Social Care	4	4	2	4	3	-1	+1	-0	-0	-0	-11.8%	4
Social Workers	39	48	48	48	50	+0	+2	+2	+2	+11	+4.8%	53
Psychologists	21	25	28	27	27	+3	-1	+0	+2	+6	+9.9%	30
Pharmacy	1	1	1	1	1	+0	-0	-0	-0	+0	-1.2%	1
H&SC, Other	13	18	20	23	23	+1	+3	+0	+4	+10	+23.9%	26
<b>Health &amp; Social Care Professionals</b>	<b>113</b>	<b>136</b>	<b>140</b>	<b>138</b>	<b>142</b>	<b>+4</b>	<b>+3</b>	<b>+5</b>	<b>+7</b>	<b>+29</b>	<b>+4.8%</b>	<b>156</b>
Management (VIII & above)	6	9	7	7	6	-2	-1	-1	-3	+0	-32.7%	6
Administrative/ Supervisory (V to VII)	30	30	34	35	34	+4	-0	-0	+4	+4	+13.1%	36
Clerical (III & IV)	85	89	95	87	86	+5	-9	-1	-3	+1	-3.7%	95
<b>Management &amp; Administrative</b>	<b>121</b>	<b>128</b>	<b>135</b>	<b>128</b>	<b>126</b>	<b>+7</b>	<b>-10</b>	<b>-2</b>	<b>-2</b>	<b>+5</b>	<b>-1.7%</b>	<b>137</b>
Support	62	58	60	54	54	+2	-6	+1	-3	-8	-5.9%	60
Maintenance/ Technical	17	16	16	15	14	-1	-1	-1	-2	-2	-12.3%	15
<b>General Support</b>	<b>79</b>	<b>74</b>	<b>76</b>	<b>69</b>	<b>69</b>	<b>+2</b>	<b>-7</b>	<b>-0</b>	<b>-5</b>	<b>-10</b>	<b>-7.3%</b>	<b>75</b>
Health Care Assistants	66	75	74	72	71	-1	-2	-0	-3	+5	-4.3%	79
Care, other	11	12	10	8	9	-2	-1	+0	-3	-2	-26.3%	10
<b>Patient &amp; Client Care</b>	<b>77</b>	<b>86</b>	<b>83</b>	<b>80</b>	<b>80</b>	<b>-3</b>	<b>-3</b>	<b>-0</b>	<b>-6</b>	<b>+3</b>	<b>-7.4%</b>	<b>89</b>



## Mental Health Employment Report by Grade Group: OCT 2024

CHO 2

OCT 2024	WTE DEC 2019	WTE DEC 2022	WTE DEC 2023	WTE SEP 2024	WTE OCT 2024	WTE Change 2023	WTE Change 2024	WTE Change SEP 2024	WTE Change Dec 2022 to OCT 2024	WTE Change Dec 2019 to OCT 2024	% WTE Change Dec 2022 to OCT 2024	No. OCT 2024
<b>Total CHO 2</b>	<b>1308</b>	<b>1329</b>	<b>1361</b>	<b>1331</b>	<b>1311</b>	<b>+31</b>	<b>-50</b>	<b>-21</b>	<b>-19</b>	<b>+2</b>	<b>-1.4%</b>	<b>1,436</b>
Consultants	38	37	43	44	45	+6	+2	+1	+8	+7	+20.9%	49
Registrars	33	37	42	45	45	+5	+3	-0	+8	+11	+21.0%	46
SHO/ Interns	35	39	37	38	37	-2	-0	-1	-2	+2	-5.8%	38
Medical/ Dental, other	1	1				-1			-1	-1	-100.0%	
<b>Medical &amp; Dental</b>	<b>107</b>	<b>114</b>	<b>122</b>	<b>126</b>	<b>126</b>	<b>+8</b>	<b>+4</b>	<b>-1</b>	<b>+12</b>	<b>+19</b>	<b>+10.7%</b>	<b>133</b>
Nurse/ Midwife Manager	146	142	151	143	145	+8	-6	+1	+3	-1	+1.9%	150
Nurse/ Midwife Specialist & AN/MP	67	88	105	103	103	+18	-3	-0	+15	+35	+17.0%	109
Staff Nurse/ Staff Midwife	357	353	326	323	322	-27	-4	-1	-31	-36	-8.9%	349
<i>Nursing/ Midwifery awaiting registration</i>	5	7	15	1	5	+8	-10	-10	-2	+0	-25.4%	8
<i>Pre-registration Nurse/ Midwife Intern</i>	0	4		21	2	-4	+2	+2	-2	+2	-41.2%	17
Nursing/ Midwifery Student	5	11	15	22	8	+4	-8	-15	-3	+3	-31.2%	25
Nursing/ Midwifery other	2	4	4	5	5	+0	+1	-0	+1	+3	+23.3%	5
<b>Nursing &amp; Midwifery</b>	<b>577</b>	<b>598</b>	<b>601</b>	<b>596</b>	<b>582</b>	<b>+3</b>	<b>-20</b>	<b>-15</b>	<b>-16</b>	<b>+4</b>	<b>-2.7%</b>	<b>638</b>
Therapy Professions	45	55	57	54	51	+2	-6	-3	-4	+6	-6.5%	58
Social Care	15	14	13	12	12	-1	-1	-0	-2	-3	-11.4%	13
Social Workers	41	44	47	50	50	+3	+3	+1	+6	+9	+14.3%	54
Psychologists	34	37	36	31	32	-1	-4	+1	-5	-2	-13.9%	36
Pharmacy	3	3	4	4	4	+1	+0	+0	+1	+1	+46.8%	5
H&SC, Other	3	3	14	13	13	+11	-1	+0	+10	+10	+370.0%	16
<b>Health &amp; Social Care Professionals</b>	<b>140</b>	<b>155</b>	<b>170</b>	<b>164</b>	<b>162</b>	<b>+16</b>	<b>-8</b>	<b>-2</b>	<b>+8</b>	<b>+22</b>	<b>+4.9%</b>	<b>182</b>
Management (VIII & above)	5	3	3	4	4	+0	+1	+0	+1	-1	+33.3%	4
Administrative/ Supervisory (V to VII)	24	25	31	35	34	+6	+3	-1	+9	+11	+36.1%	35
Clerical (III & IV)	109	98	111	102	100	+13	-10	-1	+3	-9	+2.9%	115
<b>Management &amp; Administrative</b>	<b>138</b>	<b>126</b>	<b>145</b>	<b>141</b>	<b>139</b>	<b>+19</b>	<b>-6</b>	<b>-2</b>	<b>+13</b>	<b>+1</b>	<b>+10.2%</b>	<b>154</b>
Support	36	27	21	18	18	-5	-3	+0	-9	-18	-32.1%	20
Maintenance/ Technical	27	36	34	34	33	-2	-1	-0	-2	+6	-6.8%	34
<b>General Support</b>	<b>63</b>	<b>62</b>	<b>56</b>	<b>52</b>	<b>51</b>	<b>-7</b>	<b>-4</b>	<b>-0</b>	<b>-11</b>	<b>-12</b>	<b>-17.6%</b>	<b>54</b>
Health Care Assistants	215	202	199	193	192	-3	-7	-1	-10	-23	-4.9%	204
Care, other	69	73	68	59	59	-5	-9	-0	-14	-11	-19.6%	71
<b>Patient &amp; Client Care</b>	<b>284</b>	<b>275</b>	<b>267</b>	<b>252</b>	<b>251</b>	<b>-8</b>	<b>-16</b>	<b>-1</b>	<b>-24</b>	<b>-33</b>	<b>-8.8%</b>	<b>275</b>



## Mental Health Employment Report by Grade Group: OCT 2024

CHO 3

OCT 2024	WTE DEC 2019	WTE DEC 2022	WTE DEC 2023	WTE SEP 2024	WTE OCT 2024	WTE Change 2023	WTE Change 2024	WTE Change SEP 2024	WTE Change Dec 2022 to OCT 2024	WTE Change Dec 2019 to OCT 2024	% WTE Change Dec 2022 to OCT 2024	No. OCT 2024
<b>Total CHO 3</b>	<b>795</b>	<b>814</b>	<b>852</b>	<b>832</b>	<b>816</b>	<b>+37</b>	<b>-36</b>	<b>-16</b>	<b>+2</b>	<b>+21</b>	<b>+0.2%</b>	<b>888</b>
Consultants	23	29	30	29	29	+1	-1	+0	-0	+6	-0.5%	31
Registrars	18	15	22	29	29	+7	+7	+0	+13	+11	+86.8%	29
SHO/ Interns	19	33	19	11	11	-14	-8	-0	-22	-8	-67.3%	11
<b>Medical &amp; Dental</b>	<b>60</b>	<b>78</b>	<b>71</b>	<b>68</b>	<b>68</b>	<b>-7</b>	<b>-3</b>	<b>+0</b>	<b>-9</b>	<b>+8</b>	<b>-12.0%</b>	<b>71</b>
Nurse/ Midwife Manager	88	87	91	87	87	+4	-4	+1	+0	-0	+0.5%	92
Nurse/ Midwife Specialist & AN/MP	39	44	52	49	48	+8	-4	-1	+4	+9	+9.0%	55
Staff Nurse/ Staff Midwife	245	243	254	242	241	+11	-12	-1	-2	-4	-0.7%	267
<i>Pre-registration Nurse/ Midwife Intern</i>	9	4	1	22	5	-3	+5	+5	+1	-4	+25.2%	10
Nursing/ Midwifery Student	9	4	1	22	5	-3	+5	-17	+1	-4	+25.2%	10
Nursing/ Midwifery other		1	1		1	+0	-0	+1	-0	+1	-33.3%	1
<b>Nursing &amp; Midwifery</b>	<b>381</b>	<b>380</b>	<b>399</b>	<b>400</b>	<b>383</b>	<b>+19</b>	<b>-16</b>	<b>-17</b>	<b>+4</b>	<b>+2</b>	<b>+0.9%</b>	<b>425</b>
Therapy Professions	26	30	30	28	28	-0	-2	+0	-2	+2	-7.1%	31
Social Care	3	2	1	1	1	-1	-0	-0	-1	-2	-56.4%	1
Social Workers	25	28	26	25	25	-2	-1	+1	-3	+0	-9.3%	27
Psychologists	92	93	91	85	87	-3	-4	+2	-6	-5	-6.8%	90
Pharmacy	3	3	3	3	3	-0	+0	+0	+0	+0	+1.1%	3
H&SC, Other	10	10	11	11	11	+1	+0	-0	+2	+2	+16.4%	12
<b>Health &amp; Social Care Professionals</b>	<b>159</b>	<b>166</b>	<b>161</b>	<b>153</b>	<b>155</b>	<b>-5</b>	<b>-6</b>	<b>+2</b>	<b>-11</b>	<b>-4</b>	<b>-6.4%</b>	<b>164</b>
Management (VIII & above)	2	4	4	4	4	+0	-0	-0	+0	+2	+0.5%	4
Administrative/ Supervisory (V to VII)	17	16	17	16	16	+1	-2	+0	-0	-1	-1.2%	16
Clerical (III & IV)	56	50	60	56	56	+9	-4	-0	+6	+0	+11.7%	61
<b>Management &amp; Administrative</b>	<b>75</b>	<b>70</b>	<b>81</b>	<b>76</b>	<b>76</b>	<b>+11</b>	<b>-5</b>	<b>-0</b>	<b>+6</b>	<b>+1</b>	<b>+8.1%</b>	<b>81</b>
Support	32	30	32	32	30	+1	-2	-2	-0	-2	-0.8%	33
Maintenance/ Technical	11	7	9	10	10	+2	+1	-0	+3	-1	+43.9%	10
<b>General Support</b>	<b>43</b>	<b>37</b>	<b>41</b>	<b>42</b>	<b>40</b>	<b>+3</b>	<b>-1</b>	<b>-2</b>	<b>+3</b>	<b>-4</b>	<b>+7.5%</b>	<b>43</b>
Health Care Assistants	75	82	97	91	90	+16	-7	-1	+9	+15	+10.6%	100
Care, other	2	2	2	2	3	+0	+1	+1	+1	+2	+38.9%	4
<b>Patient &amp; Client Care</b>	<b>77</b>	<b>84</b>	<b>100</b>	<b>93</b>	<b>94</b>	<b>+16</b>	<b>-6</b>	<b>+0</b>	<b>+10</b>	<b>+17</b>	<b>+11.5%</b>	<b>104</b>



## Mental Health Employment Report by Grade Group: OCT 2024

CHO 4

OCT 2024	WTE DEC 2019	WTE DEC 2022	WTE DEC 2023	WTE SEP 2024	WTE OCT 2024	WTE Change 2023	WTE Change 2024	WTE Change SEP 2024	WTE Change Dec 2022 to OCT 2024	WTE Change Dec 2019 to OCT 2024	% WTE Change Dec 2022 to OCT 2024	No. OCT 2024
<b>Total CHO 4</b>	<b>1499</b>	<b>1562</b>	<b>1615</b>	<b>1566</b>	<b>1564</b>	<b>+54</b>	<b>-51</b>	<b>-2</b>	<b>+2</b>	<b>+65</b>	<b>+0.1%</b>	<b>1,747</b>
Consultants	50	60	65	70	71	+4	+6	+1	+11	+21	+17.8%	80
Registrars	46	56	51	50	50	-5	-1	+0	-6	+4	-11.3%	51
SHO/ Interns	31	42	55	58	60	+12	+5	+2	+18	+29	+41.3%	62
Medical/ Dental, other	2	1	1	1	1	+0	+0	+0	+0	-1	+1.0%	4
<b>Medical &amp; Dental</b>	<b>129</b>	<b>160</b>	<b>171</b>	<b>179</b>	<b>182</b>	<b>+11</b>	<b>+11</b>	<b>+3</b>	<b>+22</b>	<b>+53</b>	<b>+13.7%</b>	<b>197</b>
Nurse/ Midwife Manager	171	207	201	201	202	-6	+1	+1	-5	+30	-2.5%	216
Nurse/ Midwife Specialist & AN/MP	60	72	90	84	85	+17	-5	+1	+13	+25	+17.8%	93
Staff Nurse/ Staff Midwife	505	479	484	446	439	+5	-45	-6	-40	-66	-8.2%	481
<i>Nursing/ Midwifery awaiting registration</i>	30		1			+1	-1	-1		-30	-100.0%	
<i>Post-registration Nurse/ Midwife Student</i>	1									-1	-100.0%	
<i>Pre-registration Nurse/ Midwife Intern</i>	3	7	1	22	19	-6	+19	+19	+12	+16	+184.9%	44
Nursing/ Midwifery Student	34	7	2	22	19	-5	+18	-3	+12	-14	+184.9%	44
Nursing/ Midwifery other				2	2		+2	+0	+2	+2	-100.0%	2
<b>Nursing &amp; Midwifery</b>	<b>770</b>	<b>765</b>	<b>776</b>	<b>755</b>	<b>747</b>	<b>+11</b>	<b>-28</b>	<b>-8</b>	<b>-17</b>	<b>-23</b>	<b>-2.3%</b>	<b>836</b>
Therapy Professions	74	79	88	82	84	+9	-4	+2	+5	+10	+6.3%	93
Social Care	4	6	3	4	4	-3	+1	-0	-2	-0	-34.8%	5
Social Workers	53	73	74	69	70	+1	-4	+0	-3	+17	-4.6%	82
Psychologists	83	96	98	92	97	+2	-1	+4	+1	+14	+0.7%	107
Pharmacy	2	2	1	1	1	-1	-1	+0	-2	-2	-74.6%	1
H&SC, Other	11	18	19	18	18	+1	-1	+0	-0	+7	-0.5%	22
<b>Health &amp; Social Care Professionals</b>	<b>227</b>	<b>273</b>	<b>283</b>	<b>265</b>	<b>272</b>	<b>+9</b>	<b>-11</b>	<b>+7</b>	<b>-2</b>	<b>+45</b>	<b>-0.6%</b>	<b>310</b>
Management (VIII & above)	1	3	3	2	3	-0	-0	+1	-0	+2	-13.0%	3
Administrative/ Supervisory (V to VII)	22	26	33	30	30	+7	-3	+0	+4	+8	+15.4%	33
Clerical (III & IV)	87	87	106	105	105	+19	-2	-0	+18	+17	+20.6%	118
<b>Management &amp; Administrative</b>	<b>111</b>	<b>116</b>	<b>142</b>	<b>137</b>	<b>138</b>	<b>+26</b>	<b>-4</b>	<b>+1</b>	<b>+22</b>	<b>+27</b>	<b>+18.6%</b>	<b>154</b>
Support	81	75	65	59	56	-10	-8	-2	-18	-24	-24.5%	64
Maintenance/ Technical	6	5	4	4	4	-1	+0	+0	-1	-2	-24.7%	4
<b>General Support</b>	<b>87</b>	<b>80</b>	<b>68</b>	<b>62</b>	<b>60</b>	<b>-11</b>	<b>-8</b>	<b>-2</b>	<b>-20</b>	<b>-27</b>	<b>-24.5%</b>	<b>68</b>
Health Care Assistants	168	162	169	162	159	+7	-10	-2	-3	-9	-1.7%	170
Care, other	7	5	6	6	5	+0	-0	-0	+0	-2	+2.5%	12
<b>Patient &amp; Client Care</b>	<b>176</b>	<b>167</b>	<b>175</b>	<b>167</b>	<b>165</b>	<b>+8</b>	<b>-10</b>	<b>-3</b>	<b>-3</b>	<b>-11</b>	<b>-1.5%</b>	<b>182</b>



## Mental Health Employment Report by Grade Group: OCT 2024

CHO 5

OCT 2024	WTE DEC 2019	WTE DEC 2022	WTE DEC 2023	WTE SEP 2024	WTE OCT 2024	WTE Change 2023	WTE Change 2024	WTE Change SEP 2024	WTE Change Dec 2022 to OCT 2024	WTE Change Dec 2019 to OCT 2024	% WTE Change Dec 2022 to OCT 2024	No. OCT 2024
<b>Total CHO 5</b>	<b>1177</b>	<b>1224</b>	<b>1325</b>	<b>1302</b>	<b>1311</b>	<b>+101</b>	<b>-14</b>	<b>+9</b>	<b>+86</b>	<b>+133</b>	<b>+7.1%</b>	<b>1,455</b>
Consultants	26	33	36	35	36	+3	-0	+1	+3	+10	+7.5%	38
Registrars	10	12	18	18	18	+6	-0	-1	+6	+8	+49.4%	18
SHO/ Interns	32	32	34	39	38	+1	+4	-2	+5	+6	+16.5%	40
Medical/ Dental, other	2	2	2	2	2	+0	+0	+0	+0	+0	+2.6%	2
<b>Medical &amp; Dental</b>	<b>70</b>	<b>80</b>	<b>90</b>	<b>95</b>	<b>93</b>	<b>+10</b>	<b>+4</b>	<b>-1</b>	<b>+14</b>	<b>+23</b>	<b>+17.3%</b>	<b>98</b>
Nurse/ Midwife Manager	171	175	155	151	152	-21	-3	+1	-23	-19	-13.2%	158
Nurse/ Midwife Specialist & AN/MP	43	68	91	83	85	+23	-6	+1	+17	+42	+24.7%	91
Staff Nurse/ Staff Midwife	412	398	393	396	406	-5	+13	+10	+8	-6	+2.0%	462
<i>Nursing/ Midwifery awaiting registration</i>		6	19	20	18	+13	-1	-1	+13	+18	+24.5%	19
<i>Pre-registration Nurse/ Midwife Intern</i>	1	1	1	6	3	+0	+2	+2	+2	+2	+207.1%	11
Nursing/ Midwifery Student	1	7	20	26	21	+14	+1	-5	+15	+20	+221.9%	30
Nursing/ Midwifery other	4	4	5	5	4	+1	-1	-1	+1	+0	+14.5%	5
<b>Nursing &amp; Midwifery</b>	<b>631</b>	<b>651</b>	<b>663</b>	<b>661</b>	<b>668</b>	<b>+12</b>	<b>+4</b>	<b>+7</b>	<b>+17</b>	<b>+37</b>	<b>+2.6%</b>	<b>746</b>
Therapy Professions	38	34	32	32	34	-2	+2	+2	+0	-4	+0.2%	38
Social Care	5	4	4	5	5	+1	+0	+0	+1	+0	+28.7%	5
Social Workers	28	29	34	31	31	+5	-3	-1	+2	+2	+5.7%	35
Psychologists	21	27	33	31	32	+6	-1	+1	+5	+11	+19.2%	37
H&SC, Other	9	23	21	19	19	-2	-2	-0	-4	+10	-17.5%	20
<b>Health &amp; Social Care Professionals</b>	<b>101</b>	<b>117</b>	<b>125</b>	<b>118</b>	<b>120</b>	<b>+8</b>	<b>-4</b>	<b>+2</b>	<b>+4</b>	<b>+19</b>	<b>+3.4%</b>	<b>135</b>
Management (VIII & above)	4	6	5	5	5	-1	+0	+0	-1	+1	-12.1%	5
Administrative/ Supervisory (V to VII)	21	23	30	28	29	+7	-1	+0	+5	+8	+22.0%	31
Clerical (III & IV)	74	74	99	92	93	+25	-6	+1	+18	+19	+24.7%	101
<b>Management &amp; Administrative</b>	<b>99</b>	<b>104</b>	<b>134</b>	<b>125</b>	<b>126</b>	<b>+31</b>	<b>-8</b>	<b>+2</b>	<b>+23</b>	<b>+28</b>	<b>+22.1%</b>	<b>137</b>
Support	171	175	183	176	175	+9	-8	-1	+1	+4	+0.3%	199
Maintenance/ Technical	19	14	13	12	14	-1	+1	+2	+0	-5	+1.6%	15
<b>General Support</b>	<b>190</b>	<b>189</b>	<b>197</b>	<b>188</b>	<b>189</b>	<b>+8</b>	<b>-7</b>	<b>+1</b>	<b>+1</b>	<b>-1</b>	<b>+0.4%</b>	<b>214</b>
Health Care Assistants	73	73	102	98	97	+28	-5	-1	+24	+24	+32.2%	103
Care, other	13	12	15	17	17	+3	+2	-0	+5	+4	+40.5%	22
<b>Patient &amp; Client Care</b>	<b>85</b>	<b>85</b>	<b>117</b>	<b>115</b>	<b>113</b>	<b>+32</b>	<b>-3</b>	<b>-1</b>	<b>+28</b>	<b>+28</b>	<b>+33.3%</b>	<b>125</b>



## Mental Health Employment Report by Grade Group: OCT 2024

CHO 6

OCT 2024	WTE DEC 2019	WTE DEC 2022	WTE DEC 2023	WTE SEP 2024	WTE OCT 2024	WTE Change 2023	WTE Change 2024	WTE Change SEP 2024	WTE Change Dec 2022 to OCT 2024	WTE Change Dec 2019 to OCT 2024	% WTE Change Dec 2022 to OCT 2024	No. OCT 2024
<b>Total CHO 6</b>	<b>593</b>	<b>650</b>	<b>683</b>	<b>671</b>	<b>678</b>	<b>+33</b>	<b>-5</b>	<b>+7</b>	<b>+28</b>	<b>+85</b>	<b>+4.4%</b>	<b>754</b>
Consultants	36	45	51	52	50	+5	-0	-1	+5	+14	+11.7%	61
Registrars	22	30	28	31	31	-2	+2	+0	+1	+9	+3.1%	33
SHO/ Interns	9	9	11	11	11	+2	+0	+0	+2	+2	+23.2%	12
<b>Medical &amp; Dental</b>	<b>67</b>	<b>84</b>	<b>90</b>	<b>93</b>	<b>92</b>	<b>+6</b>	<b>+2</b>	<b>-1</b>	<b>+8</b>	<b>+25</b>	<b>+9.9%</b>	<b>106</b>
Nurse/ Midwife Manager	76	75	73	61	61	-2	-12	-0	-14	-15	-18.3%	64
Nurse/ Midwife Specialist & AN/MP	14	27	34	54	55	+7	+22	+1	+28	+42	+106.0%	61
Staff Nurse/ Staff Midwife	139	151	144	137	141	-7	-3	+5	-10	+2	-6.7%	149
<i>Nursing/ Midwifery awaiting registration</i>				1	2		+2	+2	+2	+2	-100.0%	4
<i>Pre-registration Nurse/ Midwife Intern</i>				4	2		+2	+2	+2	+2	-100.0%	3
Nursing/ Midwifery Student				5	4		+4	-1	+4	+4	-100.0%	7
Nursing/ Midwifery other	2	4	3	3	3	-1	+0	+0	-0	+1	-12.2%	4
<b>Nursing &amp; Midwifery</b>	<b>231</b>	<b>257</b>	<b>254</b>	<b>261</b>	<b>265</b>	<b>-3</b>	<b>+11</b>	<b>+4</b>	<b>+8</b>	<b>+34</b>	<b>+3.2%</b>	<b>285</b>
Therapy Professions	43	41	43	39	41	+2	-2	+2	-0	-2	-0.2%	49
Social Care	26	28	24	22	24	-4	-0	+1	-4	-2	-15.7%	27
Social Workers	30	36	37	32	34	+0	-3	+2	-2	+4	-6.3%	38
Psychologists	22	38	43	40	40	+6	-3	+0	+3	+18	+6.8%	46
H&SC, Other	9	6	16	15	14	+10	-2	-1	+8	+6	+121.3%	16
<b>Health &amp; Social Care Professionals</b>	<b>130</b>	<b>150</b>	<b>163</b>	<b>149</b>	<b>153</b>	<b>+13</b>	<b>-10</b>	<b>+4</b>	<b>+4</b>	<b>+24</b>	<b>+2.4%</b>	<b>176</b>
Management (VIII & above)	3	5	5	5	5	+0	-0	-0	-0	+2	-0.4%	5
Administrative/ Supervisory (V to VII)	27	31	27	25	27	-4	-1	+1	-4	-0	-13.9%	29
Clerical (III & IV)	42	29	41	40	40	+12	-1	-0	+11	-2	+36.9%	47
<b>Management &amp; Administrative</b>	<b>72</b>	<b>65</b>	<b>73</b>	<b>70</b>	<b>71</b>	<b>+8</b>	<b>-2</b>	<b>+1</b>	<b>+6</b>	<b>-1</b>	<b>+9.9%</b>	<b>81</b>
Support	36	29	28	23	23	-1	-6	-0	-7	-14	-23.0%	27
Maintenance/ Technical	6	5	6	4	4	+1	-2	+0	-1	-2	-15.5%	5
<b>General Support</b>	<b>42</b>	<b>34</b>	<b>34</b>	<b>27</b>	<b>27</b>	<b>+0</b>	<b>-8</b>	<b>-0</b>	<b>-7</b>	<b>-16</b>	<b>-21.9%</b>	<b>32</b>
Health Care Assistants	46	54	62	65	64	+8	+3	-1	+11	+19	+19.9%	67
Care, other	5	7	7	6	6	+1	-2	-0	-1	+0	-19.2%	7
<b>Patient &amp; Client Care</b>	<b>51</b>	<b>60</b>	<b>69</b>	<b>71</b>	<b>70</b>	<b>+9</b>	<b>+1</b>	<b>-1</b>	<b>+9</b>	<b>+19</b>	<b>+15.5%</b>	<b>74</b>



## Mental Health Employment Report by Grade Group: OCT 2024

CHO 7

OCT 2024	WTE DEC 2019	WTE DEC 2022	WTE DEC 2023	WTE SEP 2024	WTE OCT 2024	WTE Change 2023	WTE Change 2024	WTE Change SEP 2024	WTE Change Dec 2022 to OCT 2024	WTE Change Dec 2019 to OCT 2024	% WTE Change Dec 2022 to OCT 2024	No. OCT 2024
<b>Total CHO 7</b>	<b>835</b>	<b>879</b>	<b>912</b>	<b>929</b>	<b>905</b>	<b>+34</b>	<b>-7</b>	<b>-24</b>	<b>+27</b>	<b>+70</b>	<b>+3.0%</b>	<b>993</b>
Consultants	48	52	57	65	63	+4	+7	-1	+11	+16	+21.3%	67
Registrars	46	55	44	48	48	-11	+4	-0	-7	+1	-13.3%	50
SHO/ Interns	21	26	28	29	29	+3	+0	-0	+3	+8	+13.1%	31
<b>Medical &amp; Dental</b>	<b>115</b>	<b>133</b>	<b>129</b>	<b>142</b>	<b>140</b>	<b>-4</b>	<b>+11</b>	<b>-2</b>	<b>+7</b>	<b>+25</b>	<b>+5.4%</b>	<b>148</b>
Nurse/ Midwife Manager	117	109	101	102	103	-8	+1	+0	-7	-14	-6.2%	107
Nurse/ Midwife Specialist & AN/MP	40	56	72	68	67	+16	-5	-1	+11	+27	+19.5%	73
Staff Nurse/ Staff Midwife	194	205	199	213	210	-5	+10	-3	+5	+15	+2.4%	232
<i>Nursing/ Midwifery awaiting registration</i>	<i>10</i>	<i>1</i>	<i>7</i>	<i>14</i>	<i>7</i>	<i>+6</i>	<i>+0</i>	<i>+0</i>	<i>+6</i>	<i>-3</i>	<i>+580.8%</i>	<i>13</i>
<i>Pre-registration Nurse/ Midwife Intern</i>	<i>1</i>	<i>0</i>	<i></i>	<i>6</i>	<i>1</i>	<i>-0</i>	<i>+1</i>	<i>+1</i>	<i>+0</i>	<i>-1</i>	<i>+400.0%</i>	<i>1</i>
Nursing/ Midwifery Student	11	1	7	20	7	+5	+1	-12	+6	-4	+564.2%	14
Nursing/ Midwifery other	8	6	5	7	7	-1	+2	+0	+1	-1	+12.1%	8
<b>Nursing &amp; Midwifery</b>	<b>370</b>	<b>377</b>	<b>383</b>	<b>410</b>	<b>393</b>	<b>+6</b>	<b>+10</b>	<b>-17</b>	<b>+16</b>	<b>+23</b>	<b>+4.2%</b>	<b>434</b>
Therapy Professions	48	51	57	54	53	+6	-3	-1	+2	+5	+4.5%	60
Social Care	8	7	7	5	5	+0	-2	-0	-2	-3	-27.6%	6
Social Workers	34	38	44	40	40	+6	-4	-0	+2	+6	+4.5%	44
Psychologists	31	35	37	36	35	+2	-2	-0	+1	+4	+2.1%	40
Pharmacy	1	0	1	1	1	+1	+0	+0	+1	-0	+325.0%	1
H&SC, Other	18	19	19	19	19	-0	+1	+0	+1	+1	+4.0%	22
<b>Health &amp; Social Care Professionals</b>	<b>140</b>	<b>150</b>	<b>165</b>	<b>155</b>	<b>154</b>	<b>+15</b>	<b>-11</b>	<b>-1</b>	<b>+4</b>	<b>+14</b>	<b>+2.9%</b>	<b>173</b>
Management (VIII & above)	3	5	4	5	4	-1	-0	-1	-1	+1	-18.3%	4
Administrative/ Supervisory (V to VII)	16	22	26	23	23	+3	-2	+0	+1	+8	+4.4%	25
Clerical (III & IV)	47	55	64	57	56	+9	-8	-1	+1	+9	+1.2%	61
<b>Management &amp; Administrative</b>	<b>65</b>	<b>83</b>	<b>94</b>	<b>85</b>	<b>84</b>	<b>+11</b>	<b>-10</b>	<b>-1</b>	<b>+1</b>	<b>+18</b>	<b>+0.9%</b>	<b>90</b>
Support	18	16	13	13	13	-4	+1	+0	-3	-4	-17.0%	15
Maintenance/ Technical	2	2	1	1	1	-1	+0	+0	-1	-1	-48.5%	1
<b>General Support</b>	<b>20</b>	<b>18</b>	<b>14</b>	<b>14</b>	<b>14</b>	<b>-4</b>	<b>+1</b>	<b>+0</b>	<b>-4</b>	<b>-5</b>	<b>-20.4%</b>	<b>16</b>
Health Care Assistants	33	31	36	35	35	+6	-1	-0	+4	+1	+13.6%	37
Care, other	92	88	92	87	86	+4	-6	-2	-2	-6	-2.2%	95
<b>Patient &amp; Client Care</b>	<b>125</b>	<b>118</b>	<b>128</b>	<b>122</b>	<b>120</b>	<b>+9</b>	<b>-7</b>	<b>-2</b>	<b>+2</b>	<b>-5</b>	<b>+1.8%</b>	<b>132</b>



## Mental Health Employment Report by Grade Group: OCT 2024

CHO 8

OCT 2024	WTE DEC 2019	WTE DEC 2022	WTE DEC 2023	WTE SEP 2024	WTE OCT 2024	WTE Change 2023	WTE Change 2024	WTE Change SEP 2024	WTE Change Dec 2022 to OCT 2024	WTE Change Dec 2019 to OCT 2024	% WTE Change Dec 2022 to OCT 2024	No. OCT 2024
<b>Total CHO 8</b>	<b>1098</b>	<b>1091</b>	<b>1123</b>	<b>1113</b>	<b>1104</b>	<b>+32</b>	<b>-19</b>	<b>-9</b>	<b>+13</b>	<b>+6</b>	<b>+1.2%</b>	<b>1,209</b>
Consultants	35	36	38	41	42	+2	+3	+1	+5	+6	+14.7%	44
Registrars	26	29	31	36	36	+1	+5	-0	+7	+10	+23.3%	38
SHO/ Interns	36	29	36	34	35	+7	-1	+1	+6	-1	+19.2%	36
<b>Medical &amp; Dental</b>	<b>97</b>	<b>94</b>	<b>105</b>	<b>111</b>	<b>112</b>	<b>+10</b>	<b>+7</b>	<b>+1</b>	<b>+18</b>	<b>+15</b>	<b>+18.7%</b>	<b>118</b>
Nurse/ Midwife Manager	121	114	118	100	100	+4	-17	+1	-14	-20	-12.0%	105
Nurse/ Midwife Specialist & AN/MP	56	75	81	85	86	+7	+4	+1	+11	+30	+14.9%	92
Staff Nurse/ Staff Midwife	332	323	322	304	301	-1	-21	-3	-22	-31	-6.9%	324
<i>Nursing/ Midwifery awaiting registration</i>	2	8	1	19	22	-7	+21	+21	+14	+20	+163.6%	27
<i>Pre-registration Nurse/ Midwife Intern</i>	1	1	1	14	3	+0	+3	+3	+3	+3	+534.0%	17
Nursing/ Midwifery Student	3	9	2	33	25	-7	+24	-8	+16	+23	+184.4%	44
Nursing/ Midwifery other	4	3	3	3	3	+0	+0	+0	+0	-1	+1.0%	3
<b>Nursing &amp; Midwifery</b>	<b>515</b>	<b>523</b>	<b>526</b>	<b>525</b>	<b>515</b>	<b>+2</b>	<b>-11</b>	<b>-10</b>	<b>-8</b>	<b>+0</b>	<b>-1.6%</b>	<b>568</b>
Therapy Professions	44	36	35	35	36	-1	+1	+0	-0	-9	-0.7%	40
Social Care	7	6	5	3	3	-1	-2	-0	-3	-4	-50.4%	4
Social Workers	41	50	52	50	52	+2	-1	+2	+2	+10	+3.6%	59
Psychologists	39	36	39	39	38	+3	-1	-0	+2	-1	+5.7%	40
Pharmacy	1	2	3	3	2	+1	-0	-0	+1	+1	+56.0%	4
H&SC, Other	20	16	18	17	17	+2	-1	+0	+1	-3	+6.4%	21
<b>Health &amp; Social Care Professionals</b>	<b>154</b>	<b>146</b>	<b>151</b>	<b>147</b>	<b>149</b>	<b>+5</b>	<b>-3</b>	<b>+1</b>	<b>+2</b>	<b>-5</b>	<b>+1.6%</b>	<b>168</b>
Management (VIII & above)	3	3	4	4	5	+1	+1	+1	+2	+2	+66.7%	5
Administrative/ Supervisory (V to VII)	22	28	30	29	27	+2	-2	-1	-1	+5	-2.9%	29
Clerical (III & IV)	88	88	102	95	93	+15	-9	-2	+6	+5	+6.4%	105
<b>Management &amp; Administrative</b>	<b>114</b>	<b>119</b>	<b>136</b>	<b>128</b>	<b>126</b>	<b>+17</b>	<b>-10</b>	<b>-2</b>	<b>+7</b>	<b>+12</b>	<b>+5.7%</b>	<b>139</b>
Support	33	27	23	23	23	-4	-0	-0	-4	-10	-15.9%	25
Maintenance/ Technical	26	25	28	28	28	+4	-1	-0	+3	+1	+11.5%	28
<b>General Support</b>	<b>59</b>	<b>52</b>	<b>51</b>	<b>51</b>	<b>50</b>	<b>-0</b>	<b>-1</b>	<b>-0</b>	<b>-1</b>	<b>-8</b>	<b>-2.8%</b>	<b>53</b>
Health Care Assistants	157	152	150	149	149	-2	-1	+1	-2	-7	-1.5%	159
Care, other	4	5	3	3	3	-1	-0	+0	-1	-0	-27.6%	4
<b>Patient &amp; Client Care</b>	<b>160</b>	<b>156</b>	<b>153</b>	<b>151</b>	<b>153</b>	<b>-3</b>	<b>-1</b>	<b>+1</b>	<b>-4</b>	<b>-8</b>	<b>-2.3%</b>	<b>163</b>



## Mental Health Employment Report by Grade Group: OCT 2024

CHO 9

OCT 2024	WTE DEC 2019	WTE DEC 2022	WTE DEC 2023	WTE SEP 2024	WTE OCT 2024	WTE Change 2023	WTE Change 2024	WTE Change SEP 2024	WTE Change Dec 2022 to OCT 2024	WTE Change Dec 2019 to OCT 2024	% WTE Change Dec 2022 to OCT 2024	No. OCT 2024
<b>Total CHO 9</b>	<b>1272</b>	<b>1371</b>	<b>1338</b>	<b>1307</b>	<b>1316</b>	<b>-33</b>	<b>-22</b>	<b>+10</b>	<b>-55</b>	<b>+45</b>	<b>-4.0%</b>	<b>1,434</b>
Consultants	50	55	59	51	54	+3	-4	+3	-1	+4	-1.6%	58
Registrars	31	57	46	38	40	-11	-6	+2	-17	+9	-30.2%	41
SHO/ Interns	53	36	54	64	67	+18	+13	+4	+32	+14	+88.4%	68
<b>Medical &amp; Dental</b>	<b>134</b>	<b>148</b>	<b>158</b>	<b>152</b>	<b>162</b>	<b>+10</b>	<b>+3</b>	<b>+9</b>	<b>+14</b>	<b>+27</b>	<b>+9.1%</b>	<b>167</b>
Nurse/ Midwife Manager	132	138	146	133	133	+8	-13	-1	-5	+1	-3.8%	138
Nurse/ Midwife Specialist & AN/MP	65	99	98	100	101	-1	+3	+1	+3	+36	+2.5%	106
Staff Nurse/ Staff Midwife	351	351	315	319	324	-36	+9	+4	-27	-28	-7.8%	349
<i>Nursing/ Midwifery awaiting registration</i>	11	14	6	17	16	-8	+10	+10	+2	+5	+14.1%	20
<i>Pre-registration Nurse/ Midwife Intern</i>	10	8	7	7	1	-1	-6	-6	-7	-9	-91.8%	2
Nursing/ Midwifery Student	21	22	13	24	16	-9	+4	-8	-5	-5	-24.7%	22
Nursing/ Midwifery other	11	9	8	8	8	-1	-0	+1	-1	-3	-11.6%	10
<b>Nursing &amp; Midwifery</b>	<b>581</b>	<b>619</b>	<b>580</b>	<b>584</b>	<b>582</b>	<b>-39</b>	<b>+2</b>	<b>-2</b>	<b>-37</b>	<b>+1</b>	<b>-5.9%</b>	<b>625</b>
Therapy Professions	55	60	53	46	45	-7	-8	-1	-15	-10	-25.0%	52
Social Care	1	1	1	1	1	+0	+0	+0	+0	+0	+1.0%	1
Social Workers	43	57	55	50	52	-2	-3	+2	-5	+8	-8.3%	57
Psychologists	46	56	59	60	62	+3	+3	+3	+6	+17	+11.6%	72
Pharmacy	8	7	10	10	10	+3	-0	-0	+3	+2	+40.7%	14
H&SC, Other	15	17	19	17	19	+1	+0	+1	+1	+4	+7.0%	21
<b>Health &amp; Social Care Professionals</b>	<b>167</b>	<b>198</b>	<b>196</b>	<b>184</b>	<b>189</b>	<b>-2</b>	<b>-8</b>	<b>+5</b>	<b>-9</b>	<b>+21</b>	<b>-4.6%</b>	<b>217</b>
Management (VIII & above)	5	5	6	6	6	+1	-0	+0	+1	+1	+19.5%	6
Administrative/ Supervisory (V to VII)	28	38	41	40	40	+3	-1	+0	+2	+12	+4.0%	43
Clerical (III & IV)	104	109	110	104	103	+1	-6	-0	-5	-0	-4.7%	117
<b>Management &amp; Administrative</b>	<b>137</b>	<b>152</b>	<b>156</b>	<b>149</b>	<b>149</b>	<b>+5</b>	<b>-7</b>	<b>-0</b>	<b>-3</b>	<b>+12</b>	<b>-1.7%</b>	<b>166</b>
Support	103	95	88	92	93	-7	+4	+0	-2	-11	-2.3%	107
Maintenance/ Technical	11	11	8	10	9	-3	+1	-1	-2	-2	-17.6%	9
<b>General Support</b>	<b>114</b>	<b>106</b>	<b>96</b>	<b>102</b>	<b>102</b>	<b>-9</b>	<b>+5</b>	<b>-1</b>	<b>-4</b>	<b>-13</b>	<b>-3.9%</b>	<b>116</b>
Health Care Assistants	126	137	139	125	123	+2	-16	-1	-13	-3	-9.7%	133
Care, other	13	12	12	10	10	-0	-2	+0	-2	-3	-18.6%	10
<b>Patient &amp; Client Care</b>	<b>139</b>	<b>149</b>	<b>151</b>	<b>135</b>	<b>133</b>	<b>+2</b>	<b>-18</b>	<b>-1</b>	<b>-16</b>	<b>-5</b>	<b>-10.4%</b>	<b>143</b>





## Mental Health Employment Report by Grade Group: OCT 2024

### other Community Services

OCT 2024	WTE DEC 2019	WTE DEC 2022	WTE DEC 2023	WTE SEP 2024	WTE OCT 2024	WTE Change 2023	WTE Change 2024	WTE Change SEP 2024	WTE Change Dec 2022 to OCT 2024	WTE Change Dec 2019 to OCT 2024	% WTE Change Dec 2022 to OCT 2024	No. OCT 2024
<b>Total other Community Services</b>	<b>438</b>	<b>511</b>	<b>580</b>	<b>568</b>	<b>567</b>	<b>+69</b>	<b>-13</b>	<b>-1</b>	<b>+56</b>	<b>+129</b>	<b>+10.9%</b>	<b>588</b>
Consultants	16	15	16	17	17	+2	+0	+0	+2	+1	+13.0%	18
Registrars	13	19	18	15	15	-1	-3	+0	-4	+2	-20.3%	15
SHO/ Interns				2	2		+2	+0	+2	+2	-100.0%	2
<b>Medical &amp; Dental</b>	<b>29</b>	<b>34</b>	<b>34</b>	<b>34</b>	<b>34</b>	<b>+1</b>	<b>-1</b>	<b>+0</b>	<b>+0</b>	<b>+5</b>	<b>+0.3%</b>	<b>35</b>
Nurse/ Midwife Manager	62	81	83	73	74	+3	-9	+1	-7	+12	-8.4%	77
Nurse/ Midwife Specialist & AN/MP	8	11	11	19	19	+0	+7	+0	+8	+10	+70.0%	20
Staff Nurse/ Staff Midwife	169	151	167	177	177	+16	+10	+0	+26	+9	+17.5%	183
<i>Nursing/ Midwifery awaiting registration</i>			2			+2	-2	-2			-100.0%	
<i>Pre-registration Nurse/ Midwife Intern</i>			1			+1	-1	-1			-100.0%	
Nursing/ Midwifery Student			3			+3	-3				-100.0%	
Nursing/ Midwifery other	1	2	2	2	2	+0	+0	+0	+0	+1	+1.5%	2
<b>Nursing &amp; Midwifery</b>	<b>240</b>	<b>245</b>	<b>266</b>	<b>271</b>	<b>272</b>	<b>+22</b>	<b>+5</b>	<b>+1</b>	<b>+27</b>	<b>+32</b>	<b>+11.2%</b>	<b>282</b>
Therapy Professions	11	10	10	9	9	+0	-1	+0	-1	-2	-8.2%	9
Social Care	2	1	2	1	1	+1	-1	+0	+0	-1	+1.0%	1
Social Workers	15	11	14	15	15	+3	+1	+0	+4	-0	+37.4%	16
Psychologists	6	5	4	3	3	-1	-1	-0	-3	-3	-50.4%	3
Pharmacy		2	3	1	1	+1	-2	+0	-1	+1	-50.0%	1
<b>Health &amp; Social Care Professionals</b>	<b>34</b>	<b>29</b>	<b>33</b>	<b>28</b>	<b>29</b>	<b>+4</b>	<b>-4</b>	<b>+0</b>	<b>-0</b>	<b>-5</b>	<b>-1.5%</b>	<b>30</b>
Management (VIII & above)	27	33	33	32	32	+0	-1	+0	-1	+5	-2.0%	32
Administrative/ Supervisory (V to VII)	31	46	59	58	58	+13	-1	+0	+12	+27	+26.0%	59
Clerical (III & IV)	25	28	34	33	32	+6	-2	-1	+5	+7	+16.2%	33
<b>Management &amp; Administrative</b>	<b>83</b>	<b>106</b>	<b>126</b>	<b>123</b>	<b>122</b>	<b>+20</b>	<b>-4</b>	<b>-1</b>	<b>+16</b>	<b>+39</b>	<b>+14.9%</b>	<b>124</b>
Support	12	25	17	15	15	-7	-2	-0	-10	+3	-39.1%	16
Maintenance/ Technical	2	8	5	8	8	-3	+2	-1	-0	+6	-5.9%	8
<b>General Support</b>	<b>14</b>	<b>33</b>	<b>23</b>	<b>23</b>	<b>23</b>	<b>-10</b>	<b>-0</b>	<b>-1</b>	<b>-10</b>	<b>+8</b>	<b>-31.0%</b>	<b>24</b>
Health Care Assistants	37	64	83	76	74	+19	-9	-2	+10	+37	+14.8%	79
Care, other	1	0	14	14	14	+14	+0	+0	+14	+14	+2,878.7%	14
<b>Patient &amp; Client Care</b>	<b>37</b>	<b>65</b>	<b>97</b>	<b>89</b>	<b>88</b>	<b>+32</b>	<b>-9</b>	<b>-1</b>	<b>+23</b>	<b>+51</b>	<b>+35.5%</b>	<b>93</b>

## Mental Health Employment Report by Grade Group: OCT 2024

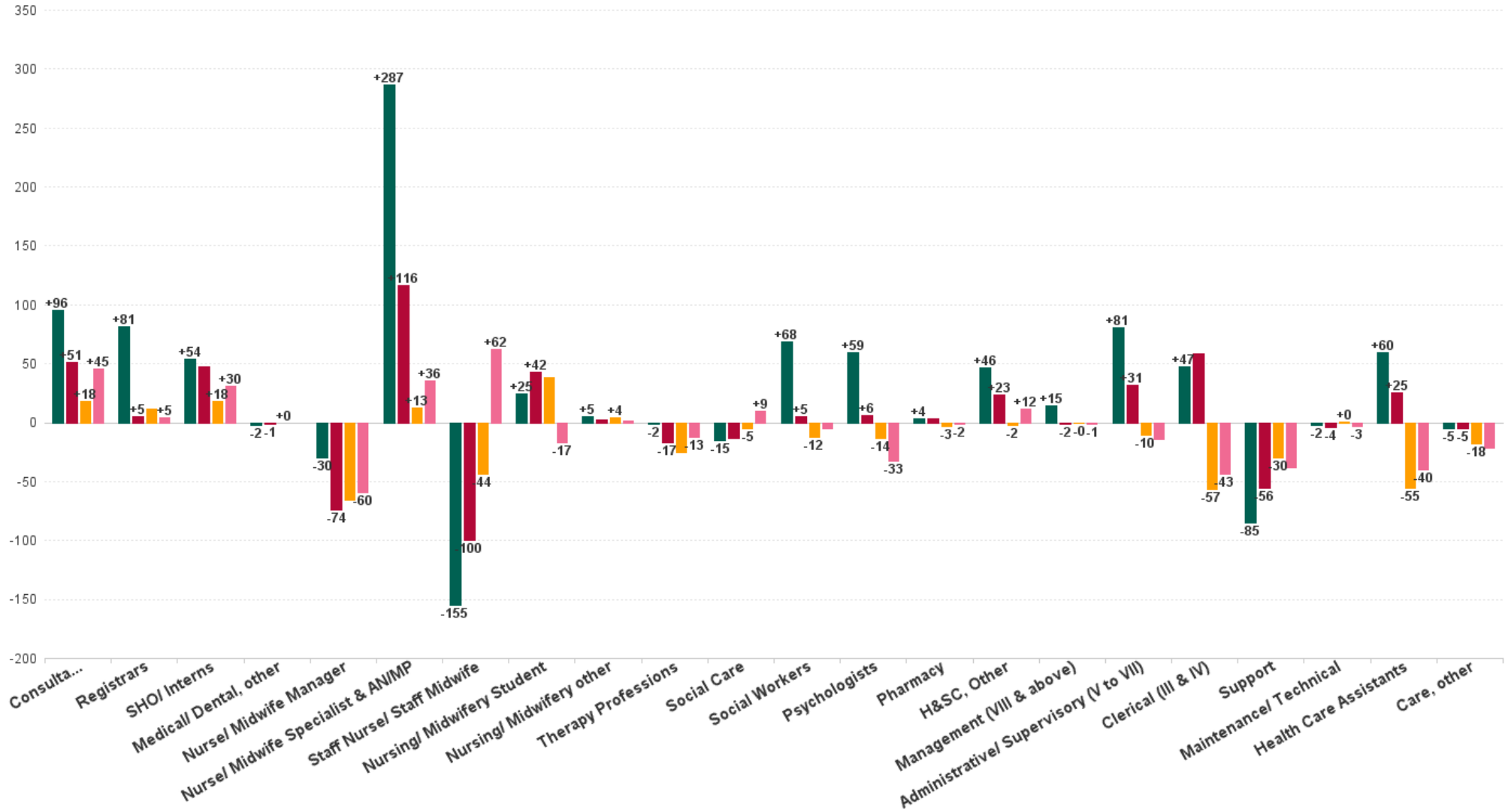
OCT 2024	WTE DEC 2019	WTE DEC 2022	WTE DEC 2023	WTE SEP 2024	WTE OCT 2024	WTE Change 2023	WTE Change 2024	WTE Change SEP 2024	WTE Change Dec 2022 to OCT 2024	WTE Change Dec 2019 to OCT 2024	% WTE Change Dec 2022 to OCT 2024	No. OCT 2024
<b>Overall</b>	<b>9,967</b>	<b>10,453</b>	<b>10,838</b>	<b>10,651</b>	<b>10,599</b>	<b>+385</b>	<b>-239</b>	<b>-52</b>	<b>+146</b>	<b>+632</b>	<b>1.40%</b>	<b>11,612</b>
Consultant Medicine	1	1	1	1	1	+0	+0	+0	+0	+0	0.00%	1
Consultant Psychiatry	352	396	429	441	447	+33	+18	+6	+51	+96	12.92%	489
<b>Consultants</b>	<b>353</b>	<b>397</b>	<b>430</b>	<b>442</b>	<b>448</b>	<b>+33</b>	<b>+18</b>	<b>+6</b>	<b>+51</b>	<b>+96</b>	<b>12.88%</b>	<b>490</b>
Registrar	169	217	208	207	208	-9	+0	+1	-9	+39	-4.11%	215
Senior Registrar	97	126	127	142	142	+1	+15	+0	+16	+45	12.90%	148
Specialist Registrar	3	2	4			+2	-4		-2	-3	-100.00%	
<b>Registrars</b>	<b>269</b>	<b>345</b>	<b>339</b>	<b>349</b>	<b>350</b>	<b>-6</b>	<b>+11</b>	<b>+1</b>	<b>+5</b>	<b>+81</b>	<b>1.54%</b>	<b>363</b>
Interns	8	5	7	7	7	+2	+0	+0	+2	-1	42.28%	9
Senior House Officer	253	262	290	305	308	+28	+18	+3	+46	+55	17.45%	317
<b>SHO/ Interns</b>	<b>261</b>	<b>267</b>	<b>297</b>	<b>312</b>	<b>315</b>	<b>+30</b>	<b>+18</b>	<b>+3</b>	<b>+48</b>	<b>+54</b>	<b>17.90%</b>	<b>326</b>
Other Medical	5	4	3	3	3	-1	+0	+0	-1	-2	-24.04%	6
<b>Medical/ Dental, other</b>	<b>5</b>	<b>4</b>	<b>3</b>	<b>3</b>	<b>3</b>	<b>-1</b>	<b>+0</b>	<b>+0</b>	<b>-1</b>	<b>-2</b>	<b>-24.04%</b>	<b>6</b>
<b>Medical &amp; Dental</b>	<b>888</b>	<b>1,013</b>	<b>1,069</b>	<b>1,105</b>	<b>1,116</b>	<b>+56</b>	<b>+48</b>	<b>+11</b>	<b>+103</b>	<b>+229</b>	<b>10.20%</b>	<b>1,185</b>
Clinical Nurse/ Midwife Manager 1	142	142	135	125	127	-7	-8	+2	-15	-15	-10.59%	130
Clinical Nurse/ Midwife Manager 2	755	781	768	718	724	-12	-44	+6	-56	-30	-7.22%	765
Clinical Nurse/ Midwife Manager 3	111	113	119	111	112	+6	-7	+1	-1	+1	-0.78%	116
Director Nursing/Midwifery, Assistant	165	176	183	178	178	+7	-6	-1	+2	+13	0.87%	184
Director of Nursing/Midwifery	29	34	32	31	30	-2	-2	-1	-4	+1	-10.43%	31
<b>Nurse/ Midwife Manager</b>	<b>1,201</b>	<b>1,245</b>	<b>1,237</b>	<b>1,163</b>	<b>1,171</b>	<b>-8</b>	<b>-66</b>	<b>+8</b>	<b>-74</b>	<b>-30</b>	<b>-5.96%</b>	<b>1,226</b>
Advanced Nurse/ Midwife Practitioner	19	48	59	69	69	+11	+10	-0	+21	+50	42.50%	71
Adv. Nurse/ Midwife, Candidate	11	20	29	21	21	+9	-8	+0	+1	+10	5.54%	23
Clinical Nurse/ Midwife Spec., Candidate			1	1	2	+1	+1	+1	+2	+2	-100.00%	3
Clinical Nurse/ Midwife Specialist	430	563	645	656	656	+83	+10	+0	+93	+225	16.55%	709
<b>Nurse/ Midwife Specialist &amp; AN/MP</b>	<b>460</b>	<b>631</b>	<b>734</b>	<b>746</b>	<b>747</b>	<b>+104</b>	<b>+13</b>	<b>+1</b>	<b>+116</b>	<b>+287</b>	<b>18.43%</b>	<b>806</b>
Nurse/ Nurse [Intellectual Disability]	5	7	7	16	14	+0	+7	-2	+7	+9	106.92%	14
Staff Nurse [Psychiatric]	2,890	2,835	2,792	2,731	2,737	-43	-55	+5	-98	-153	-3.46%	2,983
Staff Nurses [General/ Children's]	108	106	93	96	97	-13	+4	+2	-9	-10	-8.41%	104
<b>Staff Nurse/ Staff Midwife</b>	<b>3,002</b>	<b>2,948</b>	<b>2,892</b>	<b>2,843</b>	<b>2,848</b>	<b>-56</b>	<b>-44</b>	<b>+5</b>	<b>-100</b>	<b>-155</b>	<b>-3.39%</b>	<b>3,101</b>
Nursing/ Midwifery awaiting registration	57	39	56	72	70	+17	+15	-2	+32	+13	81.67%	91
Post-registration Nurse/ Midwife Student	1									-1	-100.00%	
Pre-registration Nurse/ Midwife Intern	25	26	14	116	37	-13	+24	-78	+11	+12	40.97%	112
<b>Nursing/ Midwifery Student</b>	<b>83</b>	<b>65</b>	<b>69</b>	<b>188</b>	<b>108</b>	<b>+4</b>	<b>+38</b>	<b>-81</b>	<b>+42</b>	<b>+25</b>	<b>65.17%</b>	<b>203</b>
Nursing Education/Clinical	32	34	33	36	37	-2	+4	+1	+2	+5	6.75%	42
<b>Nursing/ Midwifery other</b>	<b>32</b>	<b>34</b>	<b>33</b>	<b>36</b>	<b>37</b>	<b>-2</b>	<b>+4</b>	<b>+1</b>	<b>+2</b>	<b>+5</b>	<b>6.75%</b>	<b>42</b>
<b>Nursing &amp; Midwifery</b>	<b>4,778</b>	<b>4,924</b>	<b>4,965</b>	<b>4,976</b>	<b>4,910</b>	<b>+42</b>	<b>-55</b>	<b>-66</b>	<b>-13</b>	<b>+132</b>	<b>-0.27%</b>	<b>5,378</b>
Dietitians	19	18	24	24	24	+6	-0	+0	+6	+5	32.89%	26
Occupational Therapists	337	346	353	325	330	+7	-23	+5	-16	-6	-4.63%	367
Physiotherapists	2	3	1	1	1	-2	-0	-0	-2	-1	-70.41%	2
Podiatrists & Chiropodists	1	1				-1			-1	-1	-100.00%	
Speech & Language Therapists	62	68	66	65	64	-2	-2	-1	-4	+2	-5.66%	77
<b>Therapy Professions</b>	<b>420</b>	<b>435</b>	<b>444</b>	<b>415</b>	<b>419</b>	<b>+9</b>	<b>-25</b>	<b>+4</b>	<b>-17</b>	<b>-2</b>	<b>-3.82%</b>	<b>472</b>
Social Care	74	72	63	58	58	-9	-5	+1	-13	-15	-18.70%	67
<b>Social Care</b>	<b>74</b>	<b>72</b>	<b>63</b>	<b>58</b>	<b>58</b>	<b>-9</b>	<b>-5</b>	<b>+1</b>	<b>-13</b>	<b>-15</b>	<b>-18.70%</b>	<b>67</b>
Social Workers	350	414	431	410	419	+17	-12	+8	+5	+68	1.19%	465
<b>Social Workers</b>	<b>350</b>	<b>414</b>	<b>431</b>	<b>410</b>	<b>419</b>	<b>+17</b>	<b>-12</b>	<b>+8</b>	<b>+5</b>	<b>+68</b>	<b>1.19%</b>	<b>465</b>
Psychologists	394	448	467	444	454	+20	-14	+10	+6	+59	1.31%	501
<b>Psychologists</b>	<b>394</b>	<b>448</b>	<b>467</b>	<b>444</b>	<b>454</b>	<b>+20</b>	<b>-14</b>	<b>+10</b>	<b>+6</b>	<b>+59</b>	<b>1.31%</b>	<b>501</b>
Pharmacists	16	16	21	18	18	+5	-3	-0	+2	+1	13.03%	23
Pharmacy Technicians	2	4	5	5	5	+1	+0	-0	+1	+2	21.24%	7
<b>Pharmacy</b>	<b>19</b>	<b>19</b>	<b>25</b>	<b>22</b>	<b>22</b>	<b>+6</b>	<b>-3</b>	<b>-0</b>	<b>+3</b>	<b>+4</b>	<b>14.62%</b>	<b>30</b>
Counsellor Therapists	95	124	145	147	148	+21	+3	+1	+24	+53	19.27%	166
HSCP Trainees/Students			4			+4	-4				-100.00%	
Other Health & Social Care	11	3	3	2	2	-0	-0	-0	-1	-9	-27.42%	6
Play Therapists/ Specialists	1	3	4	3	3	+1	-1	+0	+0	+2	0.00%	4
<b>H&amp;SC, Other</b>	<b>107</b>	<b>130</b>	<b>155</b>	<b>153</b>	<b>153</b>	<b>+25</b>	<b>-2</b>	<b>+1</b>	<b>+23</b>	<b>+46</b>	<b>17.74%</b>	<b>176</b>
<b>Health &amp; Social Care Professionals</b>	<b>1,364</b>	<b>1,518</b>	<b>1,586</b>	<b>1,502</b>	<b>1,525</b>	<b>+68</b>	<b>-61</b>	<b>+23</b>	<b>+7</b>	<b>+161</b>	<b>0.44%</b>	<b>1,711</b>
CEO/Chief Officer			1	1	1	+1	+0	+0	+1	+1	-100.00%	1
General Managers	22	27	23	23	22	-4	-1	-1	-5	-0	-17.80%	22
National Director	2	1				-1			-1	-2	-100.00%	
National Director, Assistant	2	3	4	4	4	+1	+0	+0	+1	+2	34.68%	4
Other Executives	7	10	11	10	11	+1	+0	+1	+1	+4	8.65%	11
VIII	25	34	35	35	35	+0	+1	+0	+1	+10	3.83%	36



OCT 2024	WTE DEC 2019	WTE DEC 2022	WTE DEC 2023	WTE SEP 2024	WTE OCT 2024	WTE Change 2023	WTE Change 2024	WTE Change SEP 2024	WTE Change Dec 2022 to OCT 2024	WTE Change Dec 2019 to OCT 2024	% WTE Change Dec 2022 to OCT 2024	No. OCT 2024
<b>Overall</b>	<b>9,967</b>	<b>10,453</b>	<b>10,838</b>	<b>10,651</b>	<b>10,599</b>	<b>+385</b>	<b>-239</b>	<b>-52</b>	<b>+146</b>	<b>+632</b>	<b>1.40%</b>	<b>11,612</b>
<b>Management (VIII &amp; above)</b>	<b>58</b>	<b>75</b>	<b>73</b>	<b>73</b>	<b>73</b>	<b>-1</b>	<b>-0</b>	<b>-0</b>	<b>-2</b>	<b>+15</b>	<b>-2.02%</b>	<b>74</b>
Middle Management (V-VII)	236	285	327	318	317	+42	-10	-0	+32	+81	11.20%	335
Other Administrative	2	2	2	1	1	+0	-1	+0	-1	-1	-36.31%	1
<b>Administrative/ Supervisory (V to VII)</b>	<b>238</b>	<b>287</b>	<b>329</b>	<b>319</b>	<b>318</b>	<b>+42</b>	<b>-10</b>	<b>-0</b>	<b>+31</b>	<b>+81</b>	<b>10.94%</b>	<b>336</b>
General Administrative (III & IV)	717	707	821	770	765	+115	-57	-5	+58	+47	8.22%	853
<b>Clerical (III &amp; IV)</b>	<b>717</b>	<b>707</b>	<b>821</b>	<b>770</b>	<b>765</b>	<b>+115</b>	<b>-57</b>	<b>-5</b>	<b>+58</b>	<b>+47</b>	<b>8.22%</b>	<b>853</b>
<b>Management &amp; Administrative</b>	<b>1,014</b>	<b>1,068</b>	<b>1,223</b>	<b>1,162</b>	<b>1,156</b>	<b>+155</b>	<b>-67</b>	<b>-5</b>	<b>+88</b>	<b>+143</b>	<b>8.24%</b>	<b>1,263</b>
Catering	66	68	83	145	145	+15	+62	-0	+78	+79	114.64%	162
Household Services	424	397	374	290	290	-24	-83	+0	-107	-134	-27.02%	333
Other Support	47	40	30	28	26	-10	-4	-2	-14	-20	-34.34%	32
Portering	48	51	44	41	39	-7	-5	-2	-12	-9	-23.56%	39
<b>Support</b>	<b>585</b>	<b>556</b>	<b>530</b>	<b>504</b>	<b>500</b>	<b>-25</b>	<b>-30</b>	<b>-4</b>	<b>-56</b>	<b>-85</b>	<b>-10.00%</b>	<b>566</b>
Maintenance	127	129	125	126	125	-4	+0	-1	-4	-2	-2.89%	129
<b>Maintenance/ Technical</b>	<b>127</b>	<b>129</b>	<b>125</b>	<b>126</b>	<b>125</b>	<b>-4</b>	<b>+0</b>	<b>-1</b>	<b>-4</b>	<b>-2</b>	<b>-2.89%</b>	<b>129</b>
<b>General Support</b>	<b>712</b>	<b>685</b>	<b>655</b>	<b>630</b>	<b>625</b>	<b>-29</b>	<b>-30</b>	<b>-5</b>	<b>-59</b>	<b>-87</b>	<b>-8.66%</b>	<b>695</b>
Attendant/ Aide	605	423	409	380	378	-14	-31	-3	-45	-227	-10.66%	415
Health Care Assistant/ Care Assistant	382	588	665	651	647	+76	-17	-3	+59	+266	10.04%	682
Health & Social Care Assistants	9	19	38	33	30	+18	-7	-2	+11	+21	58.15%	34
<b>Health Care Assistants</b>	<b>996</b>	<b>1,030</b>	<b>1,111</b>	<b>1,063</b>	<b>1,055</b>	<b>+81</b>	<b>-55</b>	<b>-8</b>	<b>+25</b>	<b>+60</b>	<b>2.44%</b>	<b>1,131</b>
Home Care Services	16	23	21	14	14	-2	-7	-1	-9	-2	-40.34%	20
Other Care Grades	23	19	41	45	47	+22	+6	+2	+28	+24	144.74%	51
Pastoral Care	13	9	10	7	7	+1	-3	+0	-3	-6	-28.69%	11
Workshop Services	165	164	157	146	144	-7	-14	-2	-21	-21	-12.50%	167
<b>Care, other</b>	<b>216</b>	<b>216</b>	<b>229</b>	<b>212</b>	<b>211</b>	<b>+13</b>	<b>-18</b>	<b>-1</b>	<b>-5</b>	<b>-5</b>	<b>-2.19%</b>	<b>249</b>
<b>Patient &amp; Client Care</b>	<b>1,212</b>	<b>1,246</b>	<b>1,340</b>	<b>1,276</b>	<b>1,267</b>	<b>+94</b>	<b>-73</b>	<b>-9</b>	<b>+20</b>	<b>+55</b>	<b>1.64%</b>	<b>1,380</b>

# WTE Change by Staff Category

■ WTE change since DEC 2019 
 ■ WTE change since DEC 2022 
 ■ WTE change since DEC 2023 
 ■ WTE change since OCT 2023



# Mental Health Employment Report by WTE, Headcount, Gender, Full-Time / Part-Time etc. OCT 2024

OCT 2024	WTE OCT 2024	No. OCT 2024	WTE : No	% Male	% Female	Male WTE : No.	Female WTE : No	Perm Count %	Perm Count Male %	Perm Count Female %	Fulltime Count %	Part time Count %	FT Count Male %	FT Count Female %
<b>Total</b>	<b>10,599</b>	<b>11,612</b>	<b>1:0.9</b>	<b>26.74%</b>	<b>73.26%</b>	<b>1:1</b>	<b>1:0.9</b>	<b>85.72%</b>	<b>22.05%</b>	<b>63.68%</b>	<b>86.07%</b>	<b>13.93%</b>	<b>93.88%</b>	<b>83.21%</b>
Consultants	448.15	490	1:0.9	42.24%	57.76%	1:0.9	1:0.9	70.82%	29.59%	41.22%	85.92%	14.08%	91.79%	81.63%
Registrars	350.05	363	1:1	42.70%	57.30%	1:1	1:0.9	3.86%	1.65%	2.20%	94.77%	5.23%	98.71%	91.83%
SHO/ Interns	314.92	326	1:1	39.88%	60.12%	1:1	1:1	0.31%		0.31%	98.47%	1.53%	100.00%	97.45%
Medical/ Dental, other	2.97	6	1:0.5	50.00%	50.00%	1:0.4	1:0.5	50.00%	16.67%	33.33%	33.33%	66.67%	33.33%	33.33%
<b>Medical &amp; Dental</b>	<b>1,116</b>	<b>1,185</b>	<b>1:0.9</b>	<b>41.77%</b>	<b>58.23%</b>	<b>1:1</b>	<b>1:0.9</b>	<b>30.80%</b>	<b>12.83%</b>	<b>17.97%</b>	<b>91.81%</b>	<b>8.19%</b>	<b>95.76%</b>	<b>88.99%</b>
Nurse/ Midwife Manager	1,171.17	1,226	1:1	36.22%	63.78%	1:1	1:0.9	98.86%	35.64%	63.21%	94.86%	5.14%	97.97%	93.09%
Nurse/ Midwife Specialist & AN/MP	747.04	806	1:0.9	18.73%	81.27%	1:1	1:0.9	99.75%	18.61%	81.14%	92.93%	7.07%	98.01%	91.76%
Staff Nurse/ Staff Midwife	2,847.8	3,101	1:0.9	25.06%	74.94%	1:0.9	1:0.9	92.74%	22.48%	70.27%	87.94%	12.06%	91.51%	86.75%
Nursing/ Midwifery Student	107.61	203	1:0.5	16.26%	83.74%	1:0.6	1:0.5	3.45%	0.99%	2.46%	99.51%	0.49%	100.00%	99.41%
Nursing/ Midwifery other	36.7	42	1:0.9	11.90%	88.10%	1:1	1:0.9	100.00%	11.90%	88.10%	90.48%	9.52%	100.00%	89.19%
<b>Nursing &amp; Midwifery</b>	<b>4,910</b>	<b>5,378</b>	<b>1:0.9</b>	<b>26.22%</b>	<b>73.78%</b>	<b>1:0.9</b>	<b>1:0.9</b>	<b>91.87%</b>	<b>24.01%</b>	<b>67.87%</b>	<b>90.72%</b>	<b>9.28%</b>	<b>94.47%</b>	<b>89.39%</b>
Therapy Professions	418.78	472	1:0.9	8.47%	91.53%	1:0.9	1:0.9	97.46%	8.47%	88.98%	83.05%	16.95%	87.50%	82.64%
Social Care	58.42	67	1:0.9	20.90%	79.10%	1:0.9	1:0.9	98.51%	20.90%	77.61%	68.66%	31.34%	78.57%	66.04%
Social Workers	418.53	465	1:0.9	16.99%	83.01%	1:1	1:0.9	96.34%	16.34%	80.00%	83.44%	16.56%	94.94%	81.09%
Psychologists	453.71	501	1:0.9	18.16%	81.84%	1:1	1:0.9	74.45%	15.37%	59.08%	82.83%	17.17%	97.80%	79.51%
Pharmacy	22.03	30	1:0.7	13.33%	86.67%	1:0.9	1:0.7	96.67%	13.33%	83.33%	43.33%	56.67%	75.00%	38.46%
H&SC, Other	153.43	176	1:0.9	18.75%	81.25%	1:1	1:0.9	94.32%	18.18%	76.14%	69.32%	30.68%	87.88%	65.03%
<b>Health &amp; Social Care Professionals</b>	<b>1,525</b>	<b>1,711</b>	<b>1:0.9</b>	<b>15.25%</b>	<b>84.75%</b>	<b>1:1</b>	<b>1:0.9</b>	<b>90.12%</b>	<b>14.20%</b>	<b>75.92%</b>	<b>80.42%</b>	<b>19.58%</b>	<b>92.72%</b>	<b>78.21%</b>
Management (VIII & above)	73.08	74	1:1	31.08%	68.92%	1:1	1:1	98.65%	29.73%	68.92%	100.00%		100.00%	100.00%
Administrative/ Supervisory (V to VII)	318.45	336	1:0.9	20.83%	79.17%	1:1	1:0.9	97.02%	19.64%	77.38%	88.69%	11.31%	98.57%	86.09%
Clerical (III & IV)	764.74	853	1:0.9	9.26%	90.74%	1:1	1:0.9	88.86%	8.44%	80.42%	78.19%	21.81%	93.67%	76.61%
<b>Management &amp; Administrative</b>	<b>1,156</b>	<b>1,263</b>	<b>1:0.9</b>	<b>13.62%</b>	<b>86.38%</b>	<b>1:1</b>	<b>1:0.9</b>	<b>91.61%</b>	<b>12.67%</b>	<b>78.94%</b>	<b>82.26%</b>	<b>17.74%</b>	<b>96.51%</b>	<b>80.02%</b>
Support	500.22	566	1:0.9	29.51%	70.49%	1:1	1:0.9	95.94%	27.74%	68.20%	65.02%	34.98%	89.82%	54.64%
Maintenance/ Technical	125.01	129	1:1	99.22%	0.78%	1:1	1:1	95.35%	94.57%	0.78%	96.90%	3.10%	96.88%	100.00%
<b>General Support</b>	<b>625</b>	<b>695</b>	<b>1:0.9</b>	<b>42.45%</b>	<b>57.55%</b>	<b>1:1</b>	<b>1:0.9</b>	<b>95.83%</b>	<b>40.14%</b>	<b>55.68%</b>	<b>70.94%</b>	<b>29.06%</b>	<b>92.88%</b>	<b>54.75%</b>
Health Care Assistants	1,055.3	1,131	1:0.9	31.48%	68.52%	1:1	1:0.9	93.81%	29.35%	64.46%	82.94%	17.06%	92.70%	78.45%
Care, other	211.24	249	1:0.8	46.59%	53.41%	1:0.9	1:0.8	89.16%	41.37%	47.79%	72.69%	27.31%	83.62%	63.16%
<b>Patient &amp; Client Care</b>	<b>1,267</b>	<b>1,380</b>	<b>1:0.9</b>	<b>34.20%</b>	<b>65.80%</b>	<b>1:0.9</b>	<b>1:0.9</b>	<b>92.97%</b>	<b>31.52%</b>	<b>61.45%</b>	<b>81.09%</b>	<b>18.91%</b>	<b>90.47%</b>	<b>76.21%</b>



## Mental Health Employment Report by WTE, Headcount, Gender, Full-Time / Part-Time etc. OCT 2024

OCT 2024	WTE OCT 2024	No. OCT 2024	WTE : No	% Male	% Female	Male WTE : No.	Female WTE : No	Perm Count %	Number Male %	Number Female %	Fulltime Count %	Part time Count %	FT Count Male %	FT Count Female %
<b>Total</b>	<b>10,599</b>	<b>11,612</b>	<b>1:0.9</b>	<b>26.74%</b>	<b>73.26%</b>	<b>1:1</b>	<b>1:0.9</b>	<b>85.72%</b>	<b>22.05%</b>	<b>63.68%</b>	<b>86.07%</b>	<b>13.93%</b>	<b>93.88%</b>	<b>83.21%</b>
CHO 1	1,028	1,108	1:0.9	26.62%	73.38%	1:1	1:0.9	90.16%	22.20%	67.96%	87.55%	12.45%	95.59%	84.62%
CHO 2	1,311	1,436	1:0.9	28.27%	71.73%	1:0.9	1:0.9	87.95%	22.98%	64.97%	86.28%	13.72%	92.36%	83.88%
CHO 3	816	888	1:0.9	20.83%	79.17%	1:0.9	1:0.9	83.67%	17.57%	66.10%	87.95%	12.05%	91.35%	87.06%
CHO 4	1,564	1,747	1:0.9	25.19%	74.81%	1:0.9	1:0.9	76.59%	18.60%	57.99%	82.88%	17.12%	92.27%	79.72%
CHO 5	1,311	1,455	1:0.9	24.67%	75.33%	1:0.9	1:0.9	88.73%	20.69%	68.04%	81.65%	18.35%	92.20%	78.19%
CHO 6	678	754	1:0.9	28.25%	71.75%	1:0.9	1:0.9	87.53%	24.54%	63.00%	84.48%	15.52%	90.61%	82.07%
CHO 7	905	993	1:0.9	23.67%	76.33%	1:1	1:0.9	85.10%	19.34%	65.76%	89.33%	10.67%	96.17%	87.20%
CHO 8	1,104	1,209	1:0.9	25.31%	74.69%	1:1	1:0.9	85.03%	20.02%	65.01%	86.44%	13.56%	96.41%	83.06%
CHO 9	1,316	1,434	1:0.9	27.75%	72.25%	1:1	1:0.9	86.68%	23.50%	63.18%	86.33%	13.67%	96.73%	82.34%
other Community Services	567	588	1:1	45.58%	54.42%	1:1	1:1	92.52%	41.84%	50.68%	95.41%	4.59%	94.40%	96.25%



## Previous Month Summary

	% WTE change since SEP 2024	WTE change since SEP 2024	CHO 1	CHO 2	CHO 3	CHO 4	CHO 5	CHO 6	CHO 7	CHO 8	CHO 9	other Community Services
<b>Total</b>	<b>-0.5%</b>	<b>-51.6</b>	<b>-22.0</b>	<b>-50.1</b>	<b>-35.7</b>	<b>-51.4</b>	<b>-14.4</b>	<b>-5.0</b>	<b>-7.0</b>	<b>-18.5</b>	<b>-21.9</b>	<b>-12.9</b>
Consultants	+1.3%	+6.0	+5.1	+1.7	-1.0	+6.3	-0.2	-0.2	+6.9	+3.4	-4.3	+0.4
Registrars	+0.4%	+1.4	+1.2	+2.5	+6.6	-1.1	-0.2	+2.5	+3.7	+5.3	-6.0	-3.0
SHO/ Interns	+1.1%	+3.3	+2.7	-0.3	-8.1	+5.3	+3.9	+0.0	+0.5	-1.4	+13.4	+2.0
Medical/ Dental, other	+0.0%	+0.0				+0.0	+0.0					
<b>Medical &amp; Dental</b>	<b>+1.0%</b>	<b>+10.7</b>	<b>+9.0</b>	<b>+4.0</b>	<b>-2.5</b>	<b>+10.5</b>	<b>+3.6</b>	<b>+2.3</b>	<b>+11.0</b>	<b>+7.3</b>	<b>+3.1</b>	<b>-0.6</b>
Nurse/ Midwife Manager	+0.7%	+7.9	-5.0	-5.7	-3.5	+1.3	-2.5	-12.1	+1.3	-17.4	-13.0	-9.4
Nurse/ Midwife Specialist & AN/MP	+0.1%	+1.0	-2.3	-2.7	-3.7	-4.6	-5.8	+21.7	-4.9	+4.4	+3.2	+7.5
Staff Nurse/ Staff Midwife	+0.2%	+4.9	-0.7	-4.5	-12.5	-44.5	+12.8	-2.9	+10.4	-21.3	+8.8	+10.4
Nursing/ Midwifery Student	-42.8%	-80.5	-5.9	-7.7	+4.5	+17.6	+0.9	+3.9	+0.7	+23.7	+3.5	-3.0
Nursing/ Midwifery other	+2.7%	+1.0	-0.0	+0.9	-0.3	+2.0	-0.8	+0.3	+2.1	+0.0	-0.1	+0.0
<b>Nursing &amp; Midwifery</b>	<b>-1.3%</b>	<b>-65.9</b>	<b>-13.9</b>	<b>-19.6</b>	<b>-15.5</b>	<b>-28.3</b>	<b>+4.5</b>	<b>+11.0</b>	<b>+9.6</b>	<b>-10.6</b>	<b>+2.4</b>	<b>+5.5</b>
Therapy Professions	+0.9%	+3.8	-2.7	-5.9	-1.8	-4.0	+1.6	-1.8	-3.4	+1.1	-7.6	-1.0
Social Care	+0.9%	+0.5	+1.0	-0.9	-0.2	+0.6	+0.3	-0.1	-2.3	-2.0	+0.0	-1.0
Social Workers	+2.0%	+8.3	+1.9	+3.3	-0.6	-4.3	-3.3	-2.6	-4.1	-0.5	-3.0	+1.0
Psychologists	+2.2%	+10.0	-0.6	-3.8	-3.7	-1.3	-0.8	-3.2	-1.7	-0.6	+3.2	-1.3
Pharmacy	-0.2%	-0.1	-0.2	+0.0	+0.1	-0.8			+0.0	-0.1	-0.2	-2.0



H&SC, Other	+0.4%	+0.6	+3.2	-0.7	+0.3	-1.0	-2.0	-2.1	+0.8	-0.6	+0.0	
<b>Health &amp; Social Care Professionals</b>	<b>+1.5%</b>	<b>+23.1</b>	<b>+2.7</b>	<b>-7.9</b>	<b>-5.8</b>	<b>-10.7</b>	<b>-4.2</b>	<b>-9.8</b>	<b>-10.7</b>	<b>-2.7</b>	<b>-7.5</b>	<b>-4.3</b>
Management (VIII & above)	-0.2%	-0.1	-0.8	+1.0	-0.0	-0.2	+0.0	-0.1	-0.1	+1.0	-0.1	-1.0
Administrative/ Supervisory (V to VII)	0.0%	-0.1	-0.1	+3.2	-1.6	-2.7	-1.4	-0.5	-2.3	-2.4	-1.1	-1.4
Clerical (III & IV)	-0.7%	-5.2	-8.7	-10.3	-3.6	-1.6	-6.3	-1.2	-8.0	-9.0	-6.1	-1.8
<b>Management &amp; Administrative</b>	<b>-0.5%</b>	<b>-5.5</b>	<b>-9.6</b>	<b>-6.1</b>	<b>-5.2</b>	<b>-4.4</b>	<b>-7.7</b>	<b>-1.7</b>	<b>-10.4</b>	<b>-10.5</b>	<b>-7.3</b>	<b>-4.2</b>
Support	-0.8%	-3.8	-5.7	-3.2	-1.5	-8.3	-8.3	-5.8	+0.8	-0.3	+4.3	-2.3
Maintenance/ Technical	-0.9%	-1.1	-1.4	-0.8	+1.0	+0.0	+1.0	-1.8	+0.0	-1.0	+1.0	+2.3
<b>General Support</b>	<b>-0.8%</b>	<b>-4.9</b>	<b>-7.1</b>	<b>-4.0</b>	<b>-0.6</b>	<b>-8.3</b>	<b>-7.3</b>	<b>-7.6</b>	<b>+0.8</b>	<b>-1.3</b>	<b>+5.3</b>	<b>-0.0</b>
Health Care Assistants	-0.8%	-8.1	-2.3	-7.2	-7.0	-9.9	-4.8	+2.6	-1.4	-0.5	-15.8	-9.2
Care, other	-0.5%	-1.0	-0.9	-9.2	+0.9	-0.3	+1.6	-1.8	-5.9	-0.2	-2.2	+0.0
<b>Patient &amp; Client Care</b>	<b>-0.7%</b>	<b>-9.1</b>	<b>-3.1</b>	<b>-16.3</b>	<b>-6.1</b>	<b>-10.2</b>	<b>-3.2</b>	<b>+0.8</b>	<b>-7.2</b>	<b>-0.7</b>	<b>-18.0</b>	<b>-9.2</b>





## Year on Year Summary

	% WTE change since OCT 2023	WTE change since OCT 2023	CHO 1	CHO 2	CHO 3	CHO 4	CHO 5	CHO 6	CHO 7	CHO 8	CHO 9	other Community Services
<b>Total</b>	<b>-0.9%</b>	<b>-90.7</b>	<b>-19.3</b>	<b>-34.7</b>	<b>-5.5</b>	<b>-29.4</b>	<b>-11.8</b>	<b>+22.8</b>	<b>+5.1</b>	<b>-28.3</b>	<b>+10.9</b>	<b>-0.5</b>
Consultants	+0.4%	+45.2	+6.8	+2.8	-1.8	+6.5	+1.1	+20.2	+8.1	+3.5	-2.3	+0.4
Registrars	+0.0%	+4.5	+1.8	+3.8	+5.6	+0.7	-0.3	-6.1	+3.2	+5.5	-6.6	-3.0
SHO/ Interns	+0.3%	+30.5	+5.4	+1.0	-5.1	+6.6	+5.0	+0.0	-1.1	+0.5	+16.1	+2.0
Medical/ Dental, other	+0.0%	+0.0				+0.0	+0.0					
<b>Medical &amp; Dental</b>	<b>+0.8%</b>	<b>+80.2</b>	<b>+14.0</b>	<b>+7.6</b>	<b>-1.2</b>	<b>+13.8</b>	<b>+5.8</b>	<b>+14.1</b>	<b>+10.2</b>	<b>+9.5</b>	<b>+7.2</b>	<b>-0.6</b>
Nurse/ Midwife Manager	-0.6%	-59.7	-9.2	-6.3	-0.1	+1.5	-4.7	-9.9	+1.7	-19.7	-7.0	-6.1
Nurse/ Midwife Specialist & AN/MP	+0.3%	+35.9	+0.3	+0.8	-1.7	-2.6	-2.7	+28.5	-3.3	+6.2	+1.5	+8.9
Staff Nurse/ Staff Midwife	+0.6%	+61.8	-1.2	-1.2	+15.2	-8.1	+21.8	-6.1	+16.7	-14.2	+25.0	+13.9
Nursing/ Midwifery Student	-0.2%	-16.8	-3.3	-15.2	+1.1	-4.7	-7.5	+3.4	-3.0	+13.0	+1.0	-1.5
Nursing/ Midwifery other	+0.0%	+1.8	-0.1	+1.4	-0.3	+2.0	-1.7	+0.3	+0.0	+0.0	+0.2	+0.0
<b>Nursing &amp; Midwifery</b>	<b>+0.2%</b>	<b>+22.9</b>	<b>-13.5</b>	<b>-20.4</b>	<b>+14.2</b>	<b>-11.9</b>	<b>+5.1</b>	<b>+16.3</b>	<b>+12.1</b>	<b>-14.7</b>	<b>+20.6</b>	<b>+15.2</b>
Therapy Professions	-0.1%	-12.7	-2.2	-1.8	-2.5	-3.6	+2.3	+1.6	-0.6	-0.4	-6.6	+1.0
Social Care	+0.1%	+9.4	+0.9	-1.0	-0.2	-0.9	+0.3	+13.4	-1.1	-1.8	+0.0	+0.0
Social Workers	0.0%	-5.2	+2.4	+6.9	+0.1	-3.9	-2.8	-4.4	-1.3	-2.7	-2.5	+3.0
Psychologists	-0.3%	-33.0	-2.5	-9.9	-15.0	-1.9	-3.0	+0.2	-4.5	-1.7	+6.6	-1.3
Pharmacy	0.0%	-1.6	-0.1	+0.6	+0.1	-0.9			+0.1	-0.1	+0.7	-2.0



H&SC, Other	+0.1%	+11.6	+4.1	+10.4	+0.0	-0.5	-4.1	-0.6	+2.7	-0.3	-0.3	
<b>Health &amp; Social Care Professionals</b>	<b>-0.3%</b>	<b>-31.5</b>	<b>+2.5</b>	<b>+5.3</b>	<b>-17.5</b>	<b>-11.7</b>	<b>-7.4</b>	<b>+10.1</b>	<b>-4.6</b>	<b>-7.0</b>	<b>-2.0</b>	<b>+0.7</b>
Management (VIII & above)	0.0%	-1.2	-0.8	+1.0	-0.0	-1.2	+1.0	-0.0	+0.0	+1.0	-0.1	-2.1
Administrative/ Supervisory (V to VII)	-0.1%	-14.6	-1.0	+6.4	-1.8	-1.5	-2.8	-11.5	-1.2	-1.9	-0.7	+1.4
Clerical (III & IV)	-0.4%	-43.2	-8.8	-7.7	-4.6	+7.5	-1.9	+0.4	-6.0	-13.7	-6.9	-1.6
<b>Management &amp; Administrative</b>	<b>-0.6%</b>	<b>-58.9</b>	<b>-10.6</b>	<b>-0.3</b>	<b>-6.5</b>	<b>+4.8</b>	<b>-3.7</b>	<b>-11.1</b>	<b>-7.1</b>	<b>-14.6</b>	<b>-7.7</b>	<b>-2.2</b>
Support	-0.4%	-38.0	-7.4	-4.0	-1.3	-7.8	-10.8	-8.3	+0.1	-0.3	+5.9	-4.1
Maintenance/ Technical	0.0%	-3.4	-1.5	-1.4	+2.5	+0.0	+0.0	-1.8	-0.1	-1.0	+0.5	-0.5
<b>General Support</b>	<b>-0.4%</b>	<b>-41.4</b>	<b>-8.9</b>	<b>-5.4</b>	<b>+1.2</b>	<b>-7.8</b>	<b>-10.8</b>	<b>-10.1</b>	<b>-0.0</b>	<b>-1.3</b>	<b>+6.4</b>	<b>-4.6</b>
Health Care Assistants	-0.4%	-40.1	-1.8	-8.3	+3.3	-16.4	-2.2	+5.3	+0.6	-0.0	-11.6	-9.0
Care, other	-0.2%	-22.0	-1.0	-13.2	+0.9	-0.2	+1.4	-1.8	-6.0	-0.1	-2.0	+0.0
<b>Patient &amp; Client Care</b>	<b>-0.6%</b>	<b>-62.0</b>	<b>-2.7</b>	<b>-21.5</b>	<b>+4.2</b>	<b>-16.6</b>	<b>-0.8</b>	<b>+3.5</b>	<b>-5.4</b>	<b>-0.2</b>	<b>-13.6</b>	<b>-8.9</b>



## Year to Date Summary

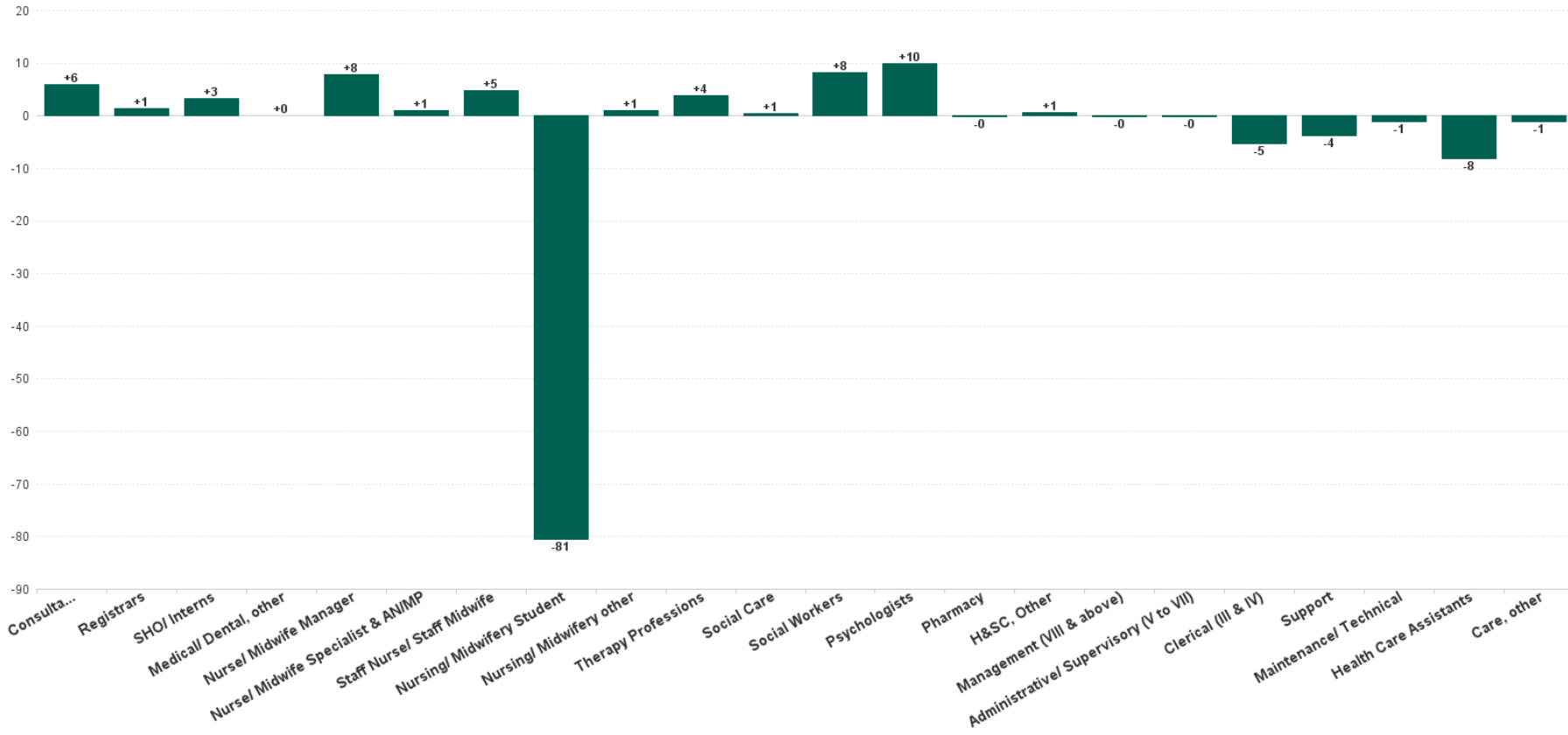
	% WTE change since DEC 2023	WTE change since DEC 2023	CHO 1	CHO 2	CHO 3	CHO 4	CHO 5	CHO 6	CHO 7	CHO 8	CHO 9	other Community Services
<b>Total</b>	<b>-2.2%</b>	<b>-238.7</b>	<b>-22.0</b>	<b>-50.1</b>	<b>-35.7</b>	<b>-51.4</b>	<b>-14.4</b>	<b>-5.0</b>	<b>-7.0</b>	<b>-18.5</b>	<b>-21.9</b>	<b>-12.9</b>
Consultants	+4.2%	+18.0	+5.1	+1.7	-1.0	+6.3	-0.2	-0.2	+6.9	+3.4	-4.3	+0.4
Registrars	+3.4%	+11.5	+1.2	+2.5	+6.6	-1.1	-0.2	+2.5	+3.7	+5.3	-6.0	-3.0
SHO/ Interns	+6.1%	+18.0	+2.7	-0.3	-8.1	+5.3	+3.9	+0.0	+0.5	-1.4	+13.4	+2.0
Medical/ Dental, other	+0.0%	+0.0				+0.0	+0.0					
<b>Medical &amp; Dental</b>	<b>+4.5%</b>	<b>+47.6</b>	<b>+9.0</b>	<b>+4.0</b>	<b>-2.5</b>	<b>+10.5</b>	<b>+3.6</b>	<b>+2.3</b>	<b>+11.0</b>	<b>+7.3</b>	<b>+3.1</b>	<b>-0.6</b>
Nurse/ Midwife Manager	-5.3%	-66.1	-5.0	-5.7	-3.5	+1.3	-2.5	-12.1	+1.3	-17.4	-13.0	-9.4
Nurse/ Midwife Specialist & AN/MP	+1.7%	+12.7	-2.3	-2.7	-3.7	-4.6	-5.8	+21.7	-4.9	+4.4	+3.2	+7.5
Staff Nurse/ Staff Midwife	-1.5%	-44.0	-0.7	-4.5	-12.5	-44.5	+12.8	-2.9	+10.4	-21.3	+8.8	+10.4
Nursing/ Midwifery Student	+55.3%	+38.3	-5.9	-7.7	+4.5	+17.6	+0.9	+3.9	+0.7	+23.7	+3.5	-3.0
Nursing/ Midwifery other	+12.5%	+4.1	-0.0	+0.9	-0.3	+2.0	-0.8	+0.3	+2.1	+0.0	-0.1	+0.0
<b>Nursing &amp; Midwifery</b>	<b>-1.1%</b>	<b>-55.0</b>	<b>-13.9</b>	<b>-19.6</b>	<b>-15.5</b>	<b>-28.3</b>	<b>+4.5</b>	<b>+11.0</b>	<b>+9.6</b>	<b>-10.6</b>	<b>+2.4</b>	<b>+5.5</b>
Therapy Professions	-5.7%	-25.4	-2.7	-5.9	-1.8	-4.0	+1.6	-1.8	-3.4	+1.1	-7.6	-1.0
Social Care	-7.3%	-4.6	+1.0	-0.9	-0.2	+0.6	+0.3	-0.1	-2.3	-2.0	+0.0	-1.0
Social Workers	-2.8%	-12.1	+1.9	+3.3	-0.6	-4.3	-3.3	-2.6	-4.1	-0.5	-3.0	+1.0
Psychologists	-2.9%	-13.7	-0.6	-3.8	-3.7	-1.3	-0.8	-3.2	-1.7	-0.6	+3.2	-1.3
Pharmacy	-12.4%	-3.1	-0.2	+0.0	+0.1	-0.8			+0.0	-0.1	-0.2	-2.0
H&SC, Other	-1.3%	-2.0	+3.2	-0.7	+0.3	-1.0	-2.0	-2.1	+0.8	-0.6	+0.0	
<b>Health &amp; Social Care Professionals</b>	<b>-3.8%</b>	<b>-61.0</b>	<b>+2.7</b>	<b>-7.9</b>	<b>-5.8</b>	<b>-10.7</b>	<b>-4.2</b>	<b>-9.8</b>	<b>-10.7</b>	<b>-2.7</b>	<b>-7.5</b>	<b>-4.3</b>
Management (VIII & above)	-0.4%	-0.3	-0.8	+1.0	-0.0	-0.2	+0.0	-0.1	-0.1	+1.0	-0.1	-1.0
Administrative/ Supervisory (V to VII)	-3.1%	-10.2	-0.1	+3.2	-1.6	-2.7	-1.4	-0.5	-2.3	-2.4	-1.1	-1.4
Clerical (III & IV)	-6.9%	-56.6	-8.7	-10.3	-3.6	-1.6	-6.3	-1.2	-8.0	-9.0	-6.1	-1.8
<b>Management &amp; Administrative</b>	<b>-5.5%</b>	<b>-67.0</b>	<b>-9.6</b>	<b>-6.1</b>	<b>-5.2</b>	<b>-4.4</b>	<b>-7.7</b>	<b>-1.7</b>	<b>-10.4</b>	<b>-10.5</b>	<b>-7.3</b>	<b>-4.2</b>
Support	-5.7%	-30.2	-5.7	-3.2	-1.5	-8.3	-8.3	-5.8	+0.8	-0.3	+4.3	-2.3



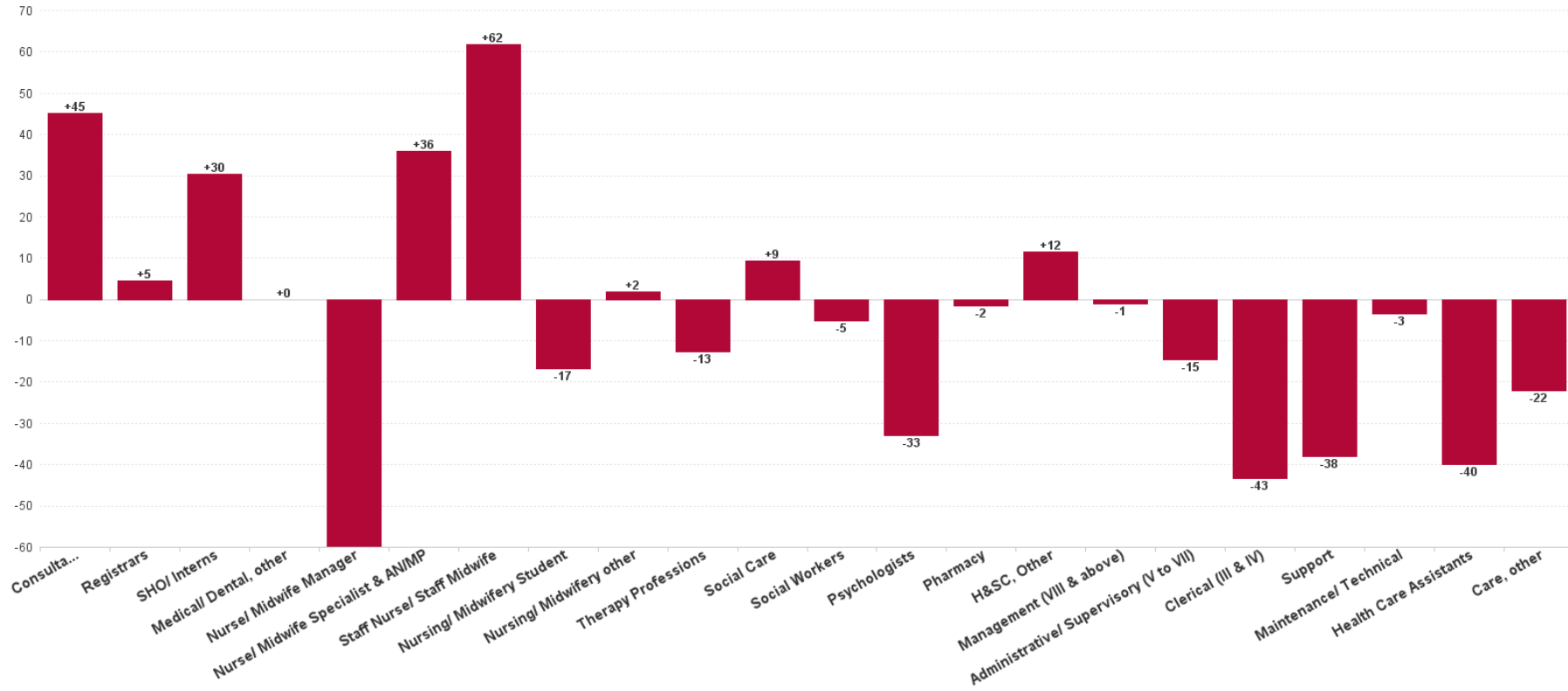
Maintenance/ Technical	+0.2%	+0.2	-1.4	-0.8	+1.0	+0.0	+1.0	-1.8	+0.0	-1.0	+1.0	+2.3
<b>General Support</b>	<b>-4.6%</b>	<b>-30.0</b>	<b>-7.1</b>	<b>-4.0</b>	<b>-0.6</b>	<b>-8.3</b>	<b>-7.3</b>	<b>-7.6</b>	<b>+0.8</b>	<b>-1.3</b>	<b>+5.3</b>	<b>-0.0</b>
Health Care Assistants	-5.0%	-55.4	-2.3	-7.2	-7.0	-9.9	-4.8	+2.6	-1.4	-0.5	-15.8	-9.2
Care, other	-7.8%	-17.9	-0.9	-9.2	+0.9	-0.3	+1.6	-1.8	-5.9	-0.2	-2.2	+0.0
<b>Patient &amp; Client Care</b>	<b>-5.5%</b>	<b>-73.3</b>	<b>-3.1</b>	<b>-16.3</b>	<b>-6.1</b>	<b>-10.2</b>	<b>-3.2</b>	<b>+0.8</b>	<b>-7.2</b>	<b>-0.7</b>	<b>-18.0</b>	<b>-9.2</b>



Previous Month Summary Chart: Change since SEP 2024



Previous Year Summary Chart: Change since OCT 2023



YTD Summary Chart: Change since DEC 2023

