

Mental Health Employment Report : MAY 2024

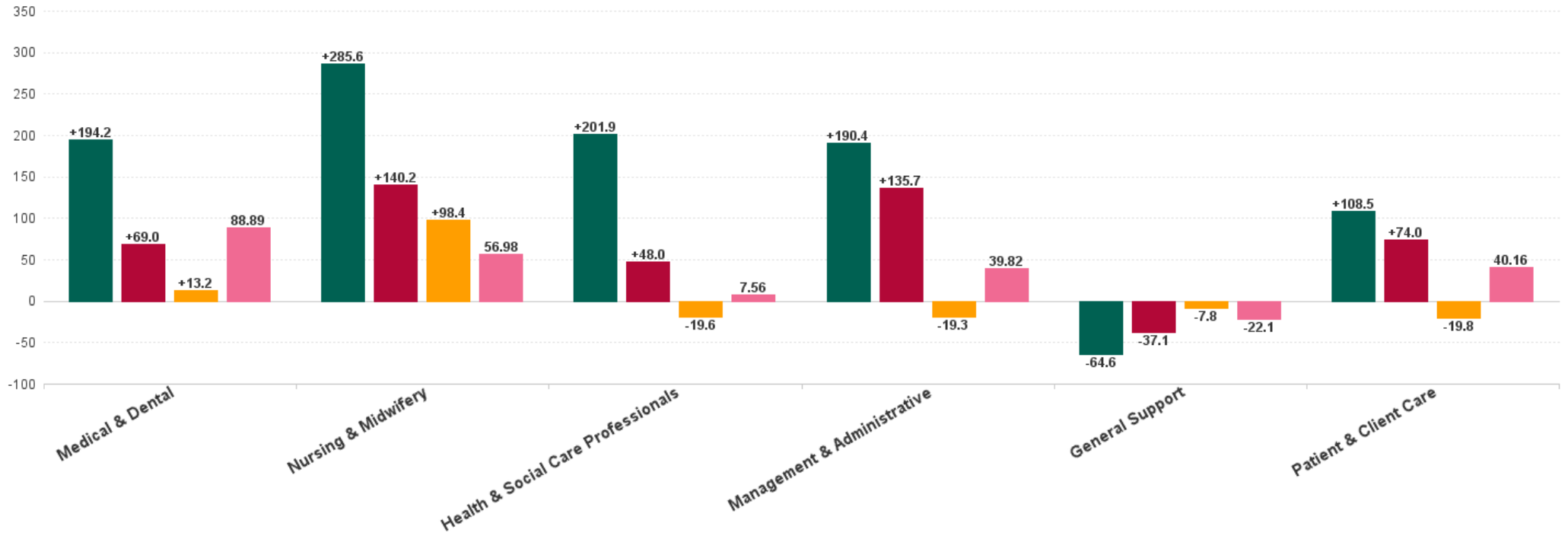
Mental Health Employment Report by Staff Group

MAY 2024	WTE DEC 2019	WTE DEC 2022	WTE DEC 2023	WTE APR 2024	WTE MAY 2024	WTE Change 2023	WTE Change 2024	WTE Change APR 2024	WTE Change Dec 2022 to MAY 2024	WTE Change Dec 2019 to MAY 2024	% WTE Change Dec 2022 to MAY 2024	No. MAY 2024
Overall	9,967	10,453	10,838	10,927	10,883	+385	+45	-44	+430	+916	+4.1%	11,931
Consultants	353	397	430	440	444	+33	+14	+4	+47	+91	+11.8%	482
Registrars	269	345	339	335	338	-6	-1	+3	-7	+69	-2.0%	356
SHO/ Interns	261	267	297	297	297	+30	+0	+1	+30	+36	+11.2%	303
Medical/ Dental, other	5	4	3	3	3	-1	+0	+0	-1	-2	-24.0%	6
Medical & Dental	888	1,013	1,069	1,074	1,082	+56	+13	+8	+69	+194	+6.8%	1,147
Nurse/ Midwife Manager	1,201	1,245	1,237	1,223	1,211	-8	-26	-12	-35	+10	-2.8%	1,271
Nurse/ Midwife Specialist & AN/MP	460	631	734	751	756	+104	+21	+5	+125	+295	+19.8%	804
Staff Nurse/ Staff Midwife	3,002	2,948	2,892	2,913	2,901	-56	+9	-13	-47	-102	-1.6%	3,141
<i>Pre-registration Nurse/ Midwife Intern</i>	25	26	14	161	157	-13	+143	-4	+131	+132	+495.0%	322
<i>Post-registration Nurse/ Midwife Student</i>	1									-1	-100.0%	
<i>Nursing/ Midwifery awaiting registration</i>	57	39	56	6	3	+17	-53	-3	-36	-54	-92.3%	3
Nursing/ Midwifery Student	83	65	69	167	160	+4	+91	-7	+95	+77	+145.8%	325
Nursing/ Midwifery other	32	34	33	37	37	-2	+4	-1	+2	+5	+6.6%	41
Nursing & Midwifery	4,778	4,924	4,965	5,091	5,064	+42	+98	-28	+140	+286	+2.8%	5,582
<i>Speech & Language Therapists</i>	62	68	66	70	67	-2	+1	-3	-1	+5	-1.2%	79
<i>Podiatrists & Chiropodists</i>	1	1				-1			-1	-1	-100.0%	
<i>Physiotherapists</i>	2	3	1	1	1	-2	+0	+0	-2	-1	-67.3%	2
<i>Occupational Therapists</i>	337	346	353	341	334	+7	-19	-7	-12	-2	-3.5%	369
<i>Dietitians</i>	19	18	24	25	25	+6	+1	+0	+7	+6	+40.7%	28
Therapy Professions	420	435	444	437	427	+9	-17	-9	-8	+7	-1.9%	478
Social Care	74	72	63	61	61	-9	-2	-0	-10	-12	-14.5%	70
Social Workers	350	414	431	433	432	+17	+1	-1	+18	+81	+4.4%	477
Psychologists	394	448	467	465	465	+20	-3	-0	+17	+70	+3.7%	509
Pharmacy	19	19	25	22	22	+6	-3	+0	+3	+4	+16.5%	30
H&SC, Other	107	130	155	160	159	+25	+3	-2	+29	+52	+21.9%	183
Health & Social Care Professionals	1,364	1,518	1,586	1,579	1,566	+68	-20	-12	+48	+202	+3.2%	1,747
Management (VIII & above)	58	75	73	73	75	-1	+1	+2	+0	+16	+0.0%	76
Administrative/ Supervisory (V to VII)	238	287	329	335	334	+42	+6	-0	+47	+97	+16.5%	349
Clerical (III & IV)	717	707	821	803	795	+115	-26	-8	+88	+78	+12.5%	877
Management & Administrative	1,014	1,068	1,223	1,211	1,204	+155	-19	-7	+136	+190	+12.7%	1,302
Support	585	556	530	514	520	-25	-11	+6	-36	-65	-6.5%	589
Maintenance/ Technical	127	129	125	126	128	-4	+3	+2	-1	+1	-0.7%	131
General Support	712	685	655	640	647	-29	-8	+7	-37	-65	-5.4%	720
Health Care Assistants	996	1,030	1,111	1,116	1,104	+81	-7	-11	+74	+109	+7.2%	1,182
Care, other	216	216	229	217	216	+13	-13	-1	-0	-0	0.0%	251
Patient & Client Care	1,212	1,246	1,340	1,332	1,320	+94	-20	-12	+74	+109	+5.9%	1,433



WTE Change by Staff Category

■ WTE change since DEC 2019
 ■ WTE change since DEC 2022
 ■ WTE change since DEC 2023
 ■ WTE change since MAY 2023

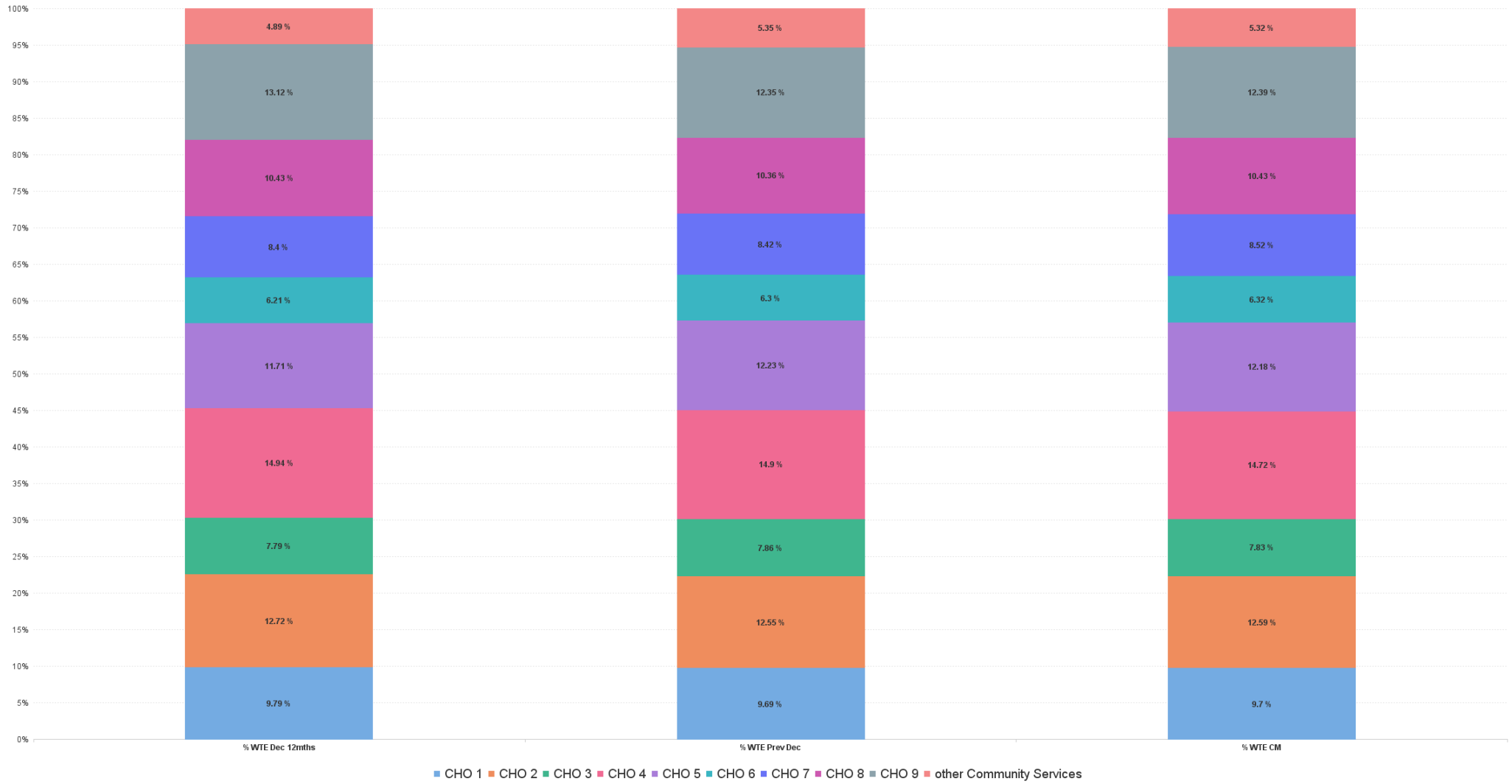


Mental Health Report by CHO: MAY 2024

MAY 2024	WTE DEC 2019	WTE DEC 2022	WTE DEC 2023	WTE APR 2024	WTE MAY 2024	WTE Change 2023	WTE Change 2024	WTE Change APR 2024	WTE Change Dec 2022 to MAY 2024	WTE Change Dec 2019 to MAY 2024	% WTE Change Dec 2022 to MAY 2024	No. MAY 2024
Overall	9,967	10,453	10,838	10,927	10,883	+385	+45	-44	+430	+916	4.11%	11,931
CHO 1	953	1,024	1,050	1,059	1,056	+26	+6	-4	+32	+103	3.13%	1,144
CHO 2	1,308	1,329	1,361	1,372	1,370	+31	+9	-2	+41	+61	3.05%	1,495
CHO 3	795	814	852	862	852	+37	+1	-9	+38	+57	4.69%	930
CHO 4	1,499	1,562	1,615	1,614	1,602	+54	-13	-12	+41	+103	2.60%	1,777
CHO 5	1,177	1,224	1,325	1,334	1,326	+101	+1	-8	+102	+149	8.30%	1,469
CHO 6	593	650	683	688	688	+33	+5	-0	+38	+95	5.92%	771
CHO 7	835	879	912	926	927	+34	+15	+1	+49	+92	5.55%	1,013
CHO 8	1,098	1,091	1,123	1,146	1,135	+32	+13	-11	+45	+37	4.09%	1,241
CHO 9	1,272	1,371	1,338	1,345	1,348	-33	+10	+3	-23	+77	-1.66%	1,490
other Community Services	438	511	580	581	579	+69	-1	-2	+68	+141	13.27%	601



% Total by CHO



Mental Health Employment Report by HSE/S38: MAY 2024

MAY 2024	WTE DEC 2019	WTE DEC 2022	WTE DEC 2023	WTE APR 2024	WTE MAY 2024	WTE Change 2023	WTE Change 2024	WTE Change APR 2024	WTE Change Dec 2022 to MAY 2024	WTE Change Dec 2019 to MAY 2024	% WTE Change Dec 2022 to MAY 2024	No. MAY 2024
Overall	9,967	10,453	10,838	10,927	10,883	+385	+45	-44	+430	+916	4.11%	11,931
Health Service Executive	9,526	10,023	10,443	10,540	10,498	+421	+55	-41	+476	+973	4.75%	11,475
Section 38 Voluntary Agencies	441	431	395	387	385	-36	-10	-2	-46	-56	-10.67%	456



Mental Health Employment Report by HSE: MAY 2024

MAY 2024	WTE DEC 2019	WTE DEC 2022	WTE DEC 2023	WTE APR 2024	WTE MAY 2024	WTE Change 2023	WTE Change 2024	WTE Change APR 2024	WTE Change Dec 2022 to MAY 2024	WTE Change Dec 2019 to MAY 2024	% WTE Change Dec 2022 to MAY 2024	No. MAY 2024
Total HSE	9,526	10,023	10,443	10,540	10,498	+421	+55	-41	+476	+973	+4.7%	11,475
Consultants	333	372	401	410	414	+29	+13	+4	+42	+81	+11.3%	447
Registrars	250	325	322	317	321	-3	-1	+4	-4	+71	-1.3%	335
SHO/ Interns	255	260	288	290	290	+28	+2	-0	+30	+35	+11.5%	296
Medical/ Dental, other	5	4	3	3	3	-1	+0	+0	-1	-2	-24.0%	6
Medical & Dental	843	961	1,014	1,020	1,028	+53	+14	+8	+67	+185	+7.0%	1,084
Nurse/ Midwife Manager	1,163	1,211	1,206	1,192	1,180	-6	-26	-12	-32	+17	-2.6%	1,238
Nurse/ Midwife Specialist & AN/MP	453	620	721	738	741	+101	+20	+4	+121	+288	+19.6%	788
Staff Nurse/ Staff Midwife	2,879	2,838	2,820	2,844	2,834	-19	+14	-10	-4	-45	-0.2%	3,068
Nursing/ Midwifery awaiting registration	57	38	56	6	3	+18	-53	-3	-35	-54	-92.1%	3
Post-registration Nurse/ Midwife Student	1									-1	-100.0%	
Pre-registration Nurse/ Midwife Intern	18	18	7	154	151	-11	+143	-4	+132	+133	+718.3%	309
Nursing/ Midwifery Student	76	56	63	160	154	+7	+91	-7	+97	+78	+173.6%	312
Nursing/ Midwifery other	29	32	33	35	35	+1	+2	-1	+3	+6	+8.7%	39
Nursing & Midwifery	4,601	4,758	4,842	4,969	4,944	+84	+102	-25	+186	+343	+3.9%	5,445
Dietitians	19	18	23	24	24	+6	+1	+0	+7	+6	+39.0%	27
Occupational Therapists	322	330	339	328	321	+9	-18	-7	-9	-1	-2.7%	351
Physiotherapists	1	2	1	1	1	-1	+0	+0	-1	-0	-59.0%	1
Podiatrists & Chiroprodists	1	1				-1			-1	-1	-100.0%	
Speech & Language Therapists	46	57	57	60	57	-0	-0	-3	-0	+11	-0.8%	67
Therapy Professions	389	407	420	413	403	+13	-18	-10	-4	+14	-1.1%	446
Social Care	48	44	39	38	38	-5	-1	-0	-6	-10	-13.7%	43
Social Workers	331	394	410	414	413	+17	+3	-1	+20	+83	+5.0%	456
Psychologists	379	423	440	439	438	+17	-3	-1	+14	+59	+3.4%	476
Pharmacy	17	17	23	20	20	+5	-3	+0	+3	+3	+15.4%	27
H&SC, Other	102	130	148	157	155	+18	+7	-2	+26	+53	+19.7%	179
Health & Social Care Professionals	1,265	1,415	1,481	1,480	1,467	+66	-14	-13	+52	+202	+3.7%	1,627
Management (VIII & above)	56	73	70	70	72	-2	+1	+2	-1	+15	-1.4%	73
Administrative/ Supervisory (V to VII)	217	264	308	314	313	+45	+5	-0	+50	+97	+18.9%	325
Clerical (III & IV)	673	670	781	764	756	+111	-25	-8	+86	+83	+12.8%	828
Management & Administrative	946	1,006	1,160	1,148	1,141	+153	-19	-7	+135	+195	+13.4%	1,226
Support	547	523	501	485	491	-22	-10	+6	-32	-56	-6.1%	550
Maintenance/ Technical	121	123	118	121	123	-5	+5	+2	-0	+2	-0.1%	125
General Support	668	646	618	605	614	-27	-5	+8	-32	-55	-5.0%	675
Health Care Assistants	990	1,024	1,103	1,105	1,093	+78	-10	-11	+69	+103	+6.7%	1,171
Care, other	213	213	225	213	212	+13	-13	-1	-0	-1	-0.1%	247
Patient & Client Care	1,203	1,237	1,328	1,318	1,306	+91	-22	-12	+69	+103	+5.5%	1,418

Mental Health Employment Report by S38 Vols: MAY 2024

MAY 2024	WTE DEC 2019	WTE DEC 2022	WTE DEC 2023	WTE APR 2024	WTE MAY 2024	WTE Change 2023	WTE Change 2024	WTE Change APR 2024	WTE Change Dec 2022 to MAY 2024	WTE Change Dec 2019 to MAY 2024	% WTE Change Dec 2022 to MAY 2024	No. MAY 2024
Total S38 Vols	441	431	395	387	385	-36	-10	-2	-46	-56	-10.67%	456
Consultants	20	25	29	30	30	+4	+1	+0	+5	+10	18.95%	35
Registrars	19	20	17	18	17	-3	+1	-1	-3	-2	-13.89%	21
SHO/ Interns	6	7	9	6	7	+2	-2	+1	+0	+1	0.00%	7
Medical & Dental	45	52	54	54	54	+2	-0	-0	+2	+9	3.84%	63
Nurse/ Midwife Manager	38	34	32	31	31	-2	-1	-0	-3	-7	-8.85%	33
Nurse/ Midwife Specialist & AN/MP	7	11	13	13	14	+2	+1	+1	+3	+7	31.69%	16
Staff Nurse/ Staff Midwife	123	109	72	70	67	-37	-6	-3	-43	-57	-39.18%	73
Nursing/ Midwifery awaiting registration		1				-1			-1		-100.00%	
Pre-registration Nurse/ Midwife Intern	7	8	7	7	7	-2	+0	+0	-2	-1	-18.75%	13
Nursing/ Midwifery Student	7	9	7	7	7	-3	+0	+0	-3	-1	-27.78%	13
Nursing/ Midwifery other	3	3		2	2	-3	+2	+0	-1	-1	-20.00%	2
Nursing & Midwifery	177	166	124	123	120	-42	-3	-3	-45	-57	-27.45%	137
Dietitians	1	1	1	1	1	+1	+0	+0	+1	+1	100.00%	1
Occupational Therapists	14	16	14	13	13	-2	-1	+0	-3	-1	-18.80%	18
Physiotherapists	1	1	0	0	0	-1	+0	+0	-1	-1	-81.08%	1
Speech & Language Therapists	16	10	9	10	10	-2	+1	+0	-0	-5	-3.35%	12
Therapy Professions	31	28	24	24	24	-4	+1	+0	-4	-7	-13.42%	32
Social Care	25	28	24	23	24	-4	-0	+0	-4	-2	-15.77%	27
Social Workers	20	20	20	19	19	+0	-2	-1	-1	-1	-7.29%	21
Psychologists	16	25	27	26	27	+2	-0	+1	+2	+11	9.30%	33
Pharmacy	2	2	2	2	2	+0	+0	+0	+0	+1	27.78%	3
H&SC, Other	5	0	7	3	3	+7	-4	+0	+3	-1	616.67%	4
Health & Social Care Professionals	99	103	104	98	99	+1	-5	+1	-4	+0	-3.78%	120
Management (VIII & above)	2	2	3	3	3	+1	+0	+0	+1	+1	50.00%	3
Administrative/ Supervisory (V to VII)	21	23	20	21	21	-3	+1	+0	-2	-0	-10.10%	24
Clerical (III & IV)	45	36	40	39	39	+4	-1	-0	+3	-6	7.08%	49
Management & Administrative	68	62	64	63	63	+2	-0	-0	+1	-5	1.95%	76
Support	38	33	30	29	29	-3	-1	-1	-4	-9	-13.22%	39
Maintenance/ Technical	6	6	7	5	5	+1	-2	+0	-1	-1	-13.17%	6
General Support	44	39	37	35	34	-2	-3	-1	-5	-10	-13.22%	45
Health Care Assistants	6	6	8	11	11	+2	+3	+0	+5	+5	90.64%	11
Care, other	3	3	4	3	3	+0	-0	+0	+0	+1	2.67%	4
Patient & Client Care	9	9	12	14	14	+3	+3	+0	+5	+6	58.21%	15



Mental Health Employment Report by Grade Group: MAY 2024

CHO 1

MAY 2024	WTE DEC 2019	WTE DEC 2022	WTE DEC 2023	WTE APR 2024	WTE MAY 2024	WTE Change 2023	WTE Change 2024	WTE Change APR 2024	WTE Change Dec 2022 to MAY 2024	WTE Change Dec 2019 to MAY 2024	% WTE Change Dec 2022 to MAY 2024	No. MAY 2024
Total CHO 1	953	1024	1050	1059	1056	+26	+6	-4	+32	+103	+3.1%	1,144
Consultants	31	34	36	38	40	+2	+4	+3	+7	+10	+19.7%	43
Registrars	24	35	39	38	38	+4	-1	-0	+3	+13	+8.3%	39
SHO/ Interns	25	21	23	22	23	+2	-0	+1	+2	-2	+9.8%	23
Medical & Dental	81	89	98	97	101	+9	+3	+3	+12	+20	+12.9%	105
Nurse/ Midwife Manager	117	118	120	119	116	+2	-4	-3	-2	-1	-1.4%	123
Nurse/ Midwife Specialist & AN/MP	67	91	101	100	102	+9	+1	+2	+10	+34	+11.4%	107
Staff Nurse/ Staff Midwife	297	294	288	296	293	-6	+6	-3	-1	-4	-0.2%	311
<i>Nursing/ Midwifery awaiting registration</i>		3	5	1		+2	-5	-5	-3		-100.0%	
<i>Pre-registration Nurse/ Midwife Intern</i>		2	3	13	13	+1	+10	+10	+11	+13	+611.1%	25
Nursing/ Midwifery Student		5	8	13	13	+3	+5	-1	+8	+13	+167.8%	25
Nursing/ Midwifery other		2	2	2	2	-0	+0	-0	-0	+2	-1.1%	2
Nursing & Midwifery	482	510	518	530	526	+8	+8	-4	+16	+44	+3.2%	568
Therapy Professions	36	40	41	40	39	+1	-2	-1	-1	+3	-3.6%	43
Social Care	4	4	2	2	2	-1	+0	+0	-1	-1	-38.6%	3
Social Workers	39	48	48	48	50	+0	+1	+1	+2	+10	+3.6%	53
Psychologists	21	25	28	29	29	+3	+2	+1	+5	+8	+18.7%	32
Pharmacy	1	1	1	1	1	+0	-0	-0	+0	+0	+1.2%	1
H&SC, Other	13	18	20	24	23	+1	+4	-0	+5	+10	+26.5%	26
Health & Social Care Professionals	113	136	140	144	144	+4	+5	+0	+8	+31	+6.1%	158
Management (VIII & above)	6	9	7	7	6	-2	-1	-1	-3	+1	-29.3%	7
Administrative/ Supervisory (V to VII)	30	30	34	36	36	+4	+2	-0	+6	+6	+19.0%	38
Clerical (III & IV)	85	89	95	93	91	+5	-4	-2	+2	+5	+1.7%	98
Management & Administrative	121	128	135	136	133	+7	-3	-3	+5	+12	+3.7%	143
Support	62	58	60	55	55	+2	-5	+0	-3	-7	-5.3%	61
Maintenance/ Technical	17	16	16	16	16	-1	-0	-0	-1	-1	-4.5%	16
General Support	79	74	76	71	70	+2	-5	-0	-4	-9	-5.1%	77
Health Care Assistants	66	75	74	74	73	-1	-1	-1	-2	+6	-2.4%	83
Care, other	11	12	10	8	9	-2	-1	+1	-3	-2	-27.2%	10
Patient & Client Care	77	86	83	81	81	-3	-2	+0	-5	+4	-5.8%	93

Mental Health Employment Report by Grade Group: MAY 2024

CHO 2

MAY 2024	WTE DEC 2019	WTE DEC 2022	WTE DEC 2023	WTE APR 2024	WTE MAY 2024	WTE Change 2023	WTE Change 2024	WTE Change APR 2024	WTE Change Dec 2022 to MAY 2024	WTE Change Dec 2019 to MAY 2024	% WTE Change Dec 2022 to MAY 2024	No. MAY 2024
Total CHO 2	1308	1329	1361	1372	1370	+31	+9	-2	+41	+61	+3.1%	1,495
Consultants	38	37	43	43	43	+6	+0	-0	+6	+5	+16.3%	48
Registrars	33	37	42	47	47	+5	+5	-0	+10	+14	+28.2%	51
SHO/ Interns	35	39	37	36	36	-2	-1	-0	-3	+1	-8.5%	38
Medical/ Dental, other	1	1				-1			-1	-1	-100.0%	
Medical & Dental	107	114	122	126	126	+8	+4	-1	+12	+19	+10.7%	137
Nurse/ Midwife Manager	146	142	151	149	145	+8	-6	-4	+3	-1	+1.9%	151
Nurse/ Midwife Specialist & AN/MP	67	88	105	106	107	+18	+1	+1	+19	+39	+21.6%	111
Staff Nurse/ Staff Midwife	357	353	326	334	340	-27	+14	+6	-13	-17	-3.7%	365
<i>Nursing/ Midwifery awaiting registration</i>	5	7	15	2		+8	-15	-15	-7	-5	-100.0%	
<i>Pre-registration Nurse/ Midwife Intern</i>	0	4		22	21	-4	+21	+21	+17	+21	+420.2%	44
Nursing/ Midwifery Student	5	11	15	24	21	+4	+6	-2	+10	+16	+90.7%	44
Nursing/ Midwifery other	2	4	4	5	5	+0	+1	+0	+1	+3	+25.0%	5
Nursing & Midwifery	577	598	601	617	617	+3	+16	+0	+19	+40	+3.2%	676
Therapy Professions	45	55	57	58	56	+2	-1	-1	+1	+11	+2.7%	62
Social Care	15	14	13	13	13	-1	+0	+0	-1	-1	-3.6%	14
Social Workers	41	44	47	48	49	+3	+2	+0	+5	+8	+10.7%	53
Psychologists	34	37	36	33	34	-1	-1	+1	-3	+1	-7.8%	38
Pharmacy	3	3	4	4	4	+1	+0	+0	+1	+1	+46.8%	5
H&SC, Other	3	3	14	15	14	+11	+0	-0	+12	+11	+409.2%	18
Health & Social Care Professionals	140	155	170	170	170	+16	-0	-0	+16	+30	+10.1%	190
Management (VIII & above)	5	3	3	3	4	+0	+1	+1	+1	-1	+33.3%	4
Administrative/ Supervisory (V to VII)	24	25	31	35	34	+6	+3	-1	+9	+10	+34.7%	35
Clerical (III & IV)	109	98	111	105	105	+13	-6	-1	+7	-4	+7.5%	116
Management & Administrative	138	126	145	143	143	+19	-2	-1	+17	+5	+13.6%	155
Support	36	27	21	19	18	-5	-3	-1	-8	-18	-31.7%	21
Maintenance/ Technical	27	36	34	32	34	-2	-0	+1	-2	+7	-5.7%	34
General Support	63	62	56	51	52	-7	-4	+1	-10	-11	-16.8%	55
Health Care Assistants	215	202	199	203	202	-3	+2	-1	-0	-13	-0.1%	212
Care, other	69	73	68	61	60	-5	-8	-1	-13	-9	-17.7%	70
Patient & Client Care	284	275	267	263	262	-8	-5	-2	-13	-22	-4.8%	282



Mental Health Employment Report by Grade Group: MAY 2024

CHO 3

MAY 2024	WTE DEC 2019	WTE DEC 2022	WTE DEC 2023	WTE APR 2024	WTE MAY 2024	WTE Change 2023	WTE Change 2024	WTE Change APR 2024	WTE Change Dec 2022 to MAY 2024	WTE Change Dec 2019 to MAY 2024	% WTE Change Dec 2022 to MAY 2024	No. MAY 2024
Total CHO 3	795	814	852	862	852	+37	+1	-9	+38	+57	+4.7%	930
Consultants	23	29	30	30	29	+1	-0	-0	+0	+6	+1.3%	32
Registrars	18	15	22	28	27	+7	+5	-1	+12	+9	+76.5%	27
SHO/ Interns	19	33	19	12	12	-14	-7	+0	-21	-7	-64.1%	12
Medical & Dental	60	78	71	70	68	-7	-3	-1	-9	+8	-12.0%	71
Nurse/ Midwife Manager	88	87	91	90	87	+4	-4	-3	+0	-1	+0.1%	93
Nurse/ Midwife Specialist & AN/MP	39	44	52	53	51	+8	-2	-2	+6	+11	+13.8%	55
Staff Nurse/ Staff Midwife	245	243	254	249	248	+11	-5	-1	+5	+3	+2.3%	272
<i>Pre-registration Nurse/ Midwife Intern</i>	9	4	1	14	13	-3	+12	+12	+9	+4	+210.5%	27
Nursing/ Midwifery Student	9	4	1	14	13	-3	+12	-0	+9	+4	+210.5%	27
Nursing/ Midwifery other		1	1	1	1	+0	+0	+0	+0	+1	+1.0%	1
Nursing & Midwifery	381	380	399	407	400	+19	+2	-6	+21	+19	+5.5%	448
Therapy Professions	26	30	30	30	28	-0	-1	-2	-2	+2	-5.9%	31
Social Care	3	2	1	1	1	-1	-0	+0	-1	-2	-53.0%	1
Social Workers	25	28	26	27	27	-2	+1	+0	-1	+1	-4.9%	28
Psychologists	92	93	91	92	92	-3	+1	-0	-1	-0	-1.5%	95
Pharmacy	3	3	3	3	3	-0	+0	+0	+0	+0	+1.1%	3
H&SC, Other	10	10	11	11	13	+1	+2	+1	+3	+3	+30.8%	14
Health & Social Care Professionals	159	166	161	164	163	-5	+2	-1	-3	+4	-1.6%	172
Management (VIII & above)	2	4	4	4	4	+0	-0	-0	+0	+2	+0.5%	4
Administrative/ Supervisory (V to VII)	17	16	17	18	19	+1	+1	+1	+3	+2	+16.3%	19
Clerical (III & IV)	56	50	60	58	57	+9	-3	-2	+6	+1	+12.8%	61
Management & Administrative	75	70	81	80	79	+11	-2	-1	+9	+5	+12.9%	84
Support	32	30	32	32	33	+1	+1	+1	+2	+0	+7.5%	36
Maintenance/ Technical	11	7	9	12	12	+2	+3	+0	+5	+1	+73.2%	12
General Support	43	37	41	44	45	+3	+4	+1	+7	+1	+19.7%	48
Health Care Assistants	75	82	97	95	95	+16	-3	-1	+13	+19	+16.0%	104
Care, other	2	2	2	2	2	+0	-0	+0	-0	+1	-2.5%	3
Patient & Client Care	77	84	100	98	97	+16	-3	-1	+13	+20	+15.4%	107



Mental Health Employment Report by Grade Group: MAY 2024

CHO 4

MAY 2024	WTE DEC 2019	WTE DEC 2022	WTE DEC 2023	WTE APR 2024	WTE MAY 2024	WTE Change 2023	WTE Change 2024	WTE Change APR 2024	WTE Change Dec 2022 to MAY 2024	WTE Change Dec 2019 to MAY 2024	% WTE Change Dec 2022 to MAY 2024	No. MAY 2024
Total CHO 4	1499	1562	1615	1614	1602	+54	-13	-12	+41	+103	+2.6%	1,777
Consultants	50	60	65	65	64	+4	-1	-1	+4	+14	+6.0%	72
Registrars	46	56	51	47	48	-5	-3	+1	-8	+2	-15.1%	49
SHO/ Interns	31	42	55	60	59	+12	+4	-1	+16	+28	+38.1%	60
Medical/ Dental, other	2	1	1	1	1	+0	+0	+0	+0	-1	+1.0%	4
Medical & Dental	129	160	171	172	171	+11	-0	-1	+11	+43	+7.1%	185
Nurse/ Midwife Manager	171	207	201	206	211	-6	+11	+5	+4	+40	+2.0%	223
Nurse/ Midwife Specialist & AN/MP	60	72	90	87	88	+17	-2	+1	+16	+28	+21.7%	96
Staff Nurse/ Staff Midwife	505	479	484	469	458	+5	-26	-11	-21	-47	-4.3%	495
<i>Nursing/ Midwifery awaiting registration</i>	30		1	1	1	+1	+0	+0	+1	-29	-100.0%	1
<i>Post-registration Nurse/ Midwife Student</i>	1									-1	-100.0%	
<i>Pre-registration Nurse/ Midwife Intern</i>	3	7	1	23	22	-6	+21	+21	+15	+19	+222.9%	45
Nursing/ Midwifery Student	34	7	2	23	23	-5	+21	-1	+16	-11	+237.8%	46
Nursing/ Midwifery other				1	1		+1	+0	+1	+1	-100.0%	1
Nursing & Midwifery	770	765	776	787	781	+11	+5	-6	+16	+11	+2.1%	861
Therapy Professions	74	79	88	83	82	+9	-6	-0	+3	+8	+4.4%	93
Social Care	4	6	3	4	4	-3	+1	+0	-2	+0	-28.0%	5
Social Workers	53	73	74	73	72	+1	-2	-2	-1	+19	-1.6%	83
Psychologists	83	96	98	95	94	+2	-4	-1	-2	+11	-1.9%	105
Pharmacy	2	2	1	1	1	-1	-1	+0	-2	-2	-74.6%	1
H&SC, Other	11	18	19	18	17	+1	-2	-1	-1	+6	-4.7%	22
Health & Social Care Professionals	227	273	283	273	270	+9	-13	-3	-4	+43	-1.4%	309
Management (VIII & above)	1	3	3	3	3	-0	+0	+0	-0	+2	-6.7%	3
Administrative/ Supervisory (V to VII)	22	26	33	34	34	+7	+1	+0	+7	+11	+27.7%	35
Clerical (III & IV)	87	87	106	107	106	+19	-0	-1	+19	+19	+22.3%	118
Management & Administrative	111	116	142	144	143	+26	+0	-1	+26	+32	+22.8%	156
Support	81	75	65	62	62	-10	-3	+0	-13	-19	-16.9%	70
Maintenance/ Technical	6	5	4	4	4	-1	+0	+0	-1	-2	-24.7%	4
General Support	87	80	68	66	66	-11	-3	+0	-14	-21	-17.4%	74
Health Care Assistants	168	162	169	167	166	+7	-3	-1	+4	-2	+2.4%	180
Care, other	7	5	6	6	6	+0	-0	-0	+0	-2	+6.9%	12
Patient & Client Care	176	167	175	172	172	+8	-3	-1	+4	-4	+2.6%	192



Mental Health Employment Report by Grade Group: MAY 2024

CHO 5

MAY 2024	WTE DEC 2019	WTE DEC 2022	WTE DEC 2023	WTE APR 2024	WTE MAY 2024	WTE Change 2023	WTE Change 2024	WTE Change APR 2024	WTE Change Dec 2022 to MAY 2024	WTE Change Dec 2019 to MAY 2024	% WTE Change Dec 2022 to MAY 2024	No. MAY 2024
Total CHO 5	1177	1224	1325	1334	1326	+101	+1	-8	+102	+149	+8.3%	1,469
Consultants	26	33	36	34	35	+3	-1	+1	+2	+9	+5.6%	38
Registrars	10	12	18	20	20	+6	+2	-0	+8	+10	+67.3%	20
SHO/ Interns	32	32	34	34	34	+1	+0	+0	+1	+2	+4.6%	34
Medical/ Dental, other	2	2	2	2	2	+0	+0	+0	+0	+0	+2.6%	2
Medical & Dental	70	80	90	90	91	+10	+1	+1	+11	+21	+14.3%	94
Nurse/ Midwife Manager	171	175	155	160	158	-21	+3	-2	-17	-13	-9.9%	165
Nurse/ Midwife Specialist & AN/MP	43	68	91	91	89	+23	-2	-2	+21	+46	+30.7%	96
Staff Nurse/ Staff Midwife	412	398	393	400	398	-5	+5	-3	-0	-14	-0.1%	444
<i>Nursing/ Midwifery awaiting registration</i>		6	19			+13	-19	-19	-6		-100.0%	
<i>Pre-registration Nurse/ Midwife Intern</i>	1	1	1	19	18	+0	+17	+17	+18	+17	+1,785.7%	38
Nursing/ Midwifery Student	1	7	20	19	18	+14	-2	-1	+12	+17	+180.9%	38
Nursing/ Midwifery other	4	4	5	5	5	+1	-0	-0	+1	+1	+34.1%	5
Nursing & Midwifery	631	651	663	675	668	+12	+4	-7	+16	+37	+2.5%	748
Therapy Professions	38	34	32	32	31	-2	-2	-1	-3	-7	-9.1%	35
Social Care	5	4	4	5	5	+1	+0	+0	+1	+0	+28.7%	5
Social Workers	28	29	34	36	35	+5	+1	-1	+6	+7	+20.8%	38
Psychologists	21	27	33	33	33	+6	-1	-1	+5	+12	+20.3%	37
H&SC, Other	9	23	21	21	21	-2	+0	+0	-2	+12	-8.1%	22
Health & Social Care Professionals	101	117	125	127	124	+8	-1	-3	+8	+23	+6.5%	137
Management (VIII & above)	4	6	5	5	5	-1	+0	+0	-1	+1	-12.1%	5
Administrative/ Supervisory (V to VII)	21	23	30	32	31	+7	+1	-1	+7	+10	+31.2%	33
Clerical (III & IV)	74	74	99	96	96	+25	-3	+0	+22	+22	+29.2%	105
Management & Administrative	99	104	134	133	132	+31	-2	-1	+28	+33	+27.4%	143
Support	171	175	183	179	180	+9	-3	+1	+6	+9	+3.3%	204
Maintenance/ Technical	19	14	13	13	13	-1	+0	+0	-1	-6	-5.6%	14
General Support	190	189	197	192	194	+8	-3	+1	+5	+3	+2.7%	218
Health Care Assistants	73	73	102	101	102	+28	+0	+1	+29	+29	+39.1%	107
Care, other	13	12	15	16	16	+3	+1	+0	+4	+3	+35.7%	22
Patient & Client Care	85	85	117	117	118	+32	+1	+1	+33	+32	+38.6%	129



Mental Health Employment Report by Grade Group: MAY 2024

CHO 6

MAY 2024	WTE DEC 2019	WTE DEC 2022	WTE DEC 2023	WTE APR 2024	WTE MAY 2024	WTE Change 2023	WTE Change 2024	WTE Change APR 2024	WTE Change Dec 2022 to MAY 2024	WTE Change Dec 2019 to MAY 2024	% WTE Change Dec 2022 to MAY 2024	No. MAY 2024
Total CHO 6	593	650	683	688	688	+33	+5	-0	+38	+95	+5.9%	771
Consultants	36	45	51	54	54	+5	+3	-0	+8	+18	+18.7%	62
Registrars	22	30	28	28	27	-2	-1	-1	-3	+5	-10.2%	31
SHO/ Interns	9	9	11	9	10	+2	-1	+1	+1	+1	+10.6%	10
Medical & Dental	67	84	90	91	90	+6	+0	-1	+6	+23	+7.6%	103
Nurse/ Midwife Manager	76	75	73	65	65	-2	-8	+0	-9	-11	-12.5%	68
Nurse/ Midwife Specialist & AN/MP	14	27	34	54	55	+7	+22	+2	+29	+42	+106.7%	60
Staff Nurse/ Staff Midwife	139	151	144	134	136	-7	-8	+1	-16	-3	-10.4%	147
<i>Pre-registration Nurse/ Midwife Intern</i>				7	7		+7	+7	+7	+7	+100.0%	14
Nursing/ Midwifery Student				7	7		+7	-0	+7	+7	-100.0%	14
Nursing/ Midwifery other	2	4	3	3	3	-1	-0	+0	-1	+1	-25.5%	4
Nursing & Midwifery	231	257	254	264	266	-3	+13	+3	+10	+35	+3.8%	293
Therapy Professions	43	41	43	42	40	+2	-3	-3	-1	-3	-3.2%	49
Social Care	26	28	24	23	24	-4	-0	+0	-4	-2	-15.8%	27
Social Workers	30	36	37	36	35	+0	-2	-1	-1	+5	-3.7%	39
Psychologists	22	38	43	42	42	+6	-2	-0	+4	+20	+10.7%	49
H&SC, Other	9	6	16	15	15	+10	-1	-0	+9	+7	+137.1%	17
Health & Social Care Professionals	130	150	163	159	155	+13	-8	-3	+6	+26	+3.9%	181
Management (VIII & above)	3	5	5	4	5	+0	+0	+1	+0	+2	+0.6%	5
Administrative/ Supervisory (V to VII)	27	31	27	27	27	-4	+0	+0	-4	+0	-12.0%	29
Clerical (III & IV)	42	29	41	41	41	+12	+0	+0	+12	-1	+41.2%	49
Management & Administrative	72	65	73	72	73	+8	+0	+1	+8	+1	+12.8%	83
Support	36	29	28	25	24	-1	-4	-1	-5	-12	-18.1%	28
Maintenance/ Technical	6	5	6	4	4	+1	-2	+0	-1	-2	-15.5%	5
General Support	42	34	34	29	28	+0	-6	-1	-6	-14	-17.7%	33
Health Care Assistants	46	54	62	68	68	+8	+6	+0	+14	+22	+26.6%	70
Care, other	5	7	7	7	7	+1	-0	+0	+0	+2	+1.8%	8
Patient & Client Care	51	60	69	75	75	+9	+6	+0	+14	+24	+23.8%	78



Mental Health Employment Report by Grade Group: MAY 2024

CHO 7

MAY 2024	WTE DEC 2019	WTE DEC 2022	WTE DEC 2023	WTE APR 2024	WTE MAY 2024	WTE Change 2023	WTE Change 2024	WTE Change APR 2024	WTE Change Dec 2022 to MAY 2024	WTE Change Dec 2019 to MAY 2024	% WTE Change Dec 2022 to MAY 2024	No. MAY 2024
Total CHO 7	835	879	912	926	927	+34	+15	+1	+49	+92	+5.5%	1,013
Consultants	48	52	57	62	62	+4	+6	+0	+10	+14	+18.9%	65
Registrars	46	55	44	40	41	-11	-3	+1	-14	-5	-25.7%	44
SHO/ Interns	21	26	28	26	26	+3	-3	-1	+0	+5	+0.2%	26
Medical & Dental	115	133	129	128	129	-4	-0	+1	-4	+14	-3.2%	135
Nurse/ Midwife Manager	117	109	101	100	103	-8	+2	+4	-6	-13	-5.3%	110
Nurse/ Midwife Specialist & AN/MP	40	56	72	68	69	+16	-2	+2	+13	+29	+24.0%	73
Staff Nurse/ Staff Midwife	194	205	199	215	214	-5	+15	-0	+9	+20	+4.6%	234
<i>Nursing/ Midwifery awaiting registration</i>	10	1	7			+6	-7	-7	-1	-10	-100.0%	
<i>Pre-registration Nurse/ Midwife Intern</i>	1	0		14	14	-0	+14	+14	+14	+13	+13,770.0%	28
Nursing/ Midwifery Student	11	1	7	14	14	+5	+7	-0	+13	+3	+1,172.5%	28
Nursing/ Midwifery other	8	6	5	6	7	-1	+2	+0	+1	-1	+12.1%	8
Nursing & Midwifery	370	377	383	402	407	+6	+24	+5	+31	+38	+8.1%	453
Therapy Professions	48	51	57	57	56	+6	-0	-1	+5	+8	+10.6%	62
Social Care	8	7	7	6	6	+0	-2	-1	-1	-2	-17.1%	7
Social Workers	34	38	44	45	44	+6	+0	-1	+6	+10	+15.7%	48
Psychologists	31	35	37	38	38	+2	+0	-0	+3	+6	+8.3%	41
Pharmacy	1	0	1	1	1	+1	-0	+0	+1	-0	+300.0%	1
H&SC, Other	18	19	19	19	18	-0	-0	-0	-0	+0	-1.6%	21
Health & Social Care Professionals	140	150	165	166	163	+15	-1	-3	+13	+23	+9.0%	180
Management (VIII & above)	3	5	4	5	5	-1	+1	-0	+0	+2	+1.0%	5
Administrative/ Supervisory (V to VII)	16	22	26	25	26	+3	+0	+1	+4	+10	+16.5%	27
Clerical (III & IV)	47	55	64	61	59	+9	-5	-2	+4	+12	+6.4%	64
Management & Administrative	65	83	94	91	90	+11	-4	-1	+7	+25	+8.8%	96
Support	18	16	13	13	13	-4	+1	-0	-3	-4	-17.0%	15
Maintenance/ Technical	2	2	1	1	1	-1	+0	+0	-1	-1	-48.5%	1
General Support	20	18	14	14	14	-4	+1	-0	-4	-5	-20.4%	16
Health Care Assistants	33	31	36	36	36	+6	-0	-0	+5	+2	+17.3%	37
Care, other	92	88	92	89	88	+4	-4	-1	+0	-4	+0.0%	96
Patient & Client Care	125	118	128	124	124	+9	-4	-1	+5	-2	+4.5%	133



Mental Health Employment Report by Grade Group: MAY 2024

CHO 8

MAY 2024	WTE DEC 2019	WTE DEC 2022	WTE DEC 2023	WTE APR 2024	WTE MAY 2024	WTE Change 2023	WTE Change 2024	WTE Change APR 2024	WTE Change Dec 2022 to MAY 2024	WTE Change Dec 2019 to MAY 2024	% WTE Change Dec 2022 to MAY 2024	No. MAY 2024
Total CHO 8	1098	1091	1123	1146	1135	+32	+13	-11	+45	+37	+4.1%	1,241
Consultants	35	36	38	40	42	+2	+3	+1	+5	+6	+14.5%	44
Registrars	26	29	31	29	28	+1	-2	-0	-1	+3	-2.1%	31
SHO/ Interns	36	29	36	41	40	+7	+4	-1	+11	+4	+37.6%	40
Medical & Dental	97	94	105	110	110	+10	+5	+0	+16	+13	+16.5%	115
Nurse/ Midwife Manager	121	114	118	111	105	+4	-13	-6	-9	-16	-7.9%	109
Nurse/ Midwife Specialist & AN/MP	56	75	81	86	84	+7	+3	-1	+10	+28	+13.2%	90
Staff Nurse/ Staff Midwife	332	323	322	315	316	-1	-7	+0	-8	-16	-2.4%	335
<i>Nursing/ Midwifery awaiting registration</i>	2	8	1	1	1	-7	+0	+0	-7	-1	-88.1%	1
<i>Pre-registration Nurse/ Midwife Intern</i>	1	1	1	24	23	+0	+22	+22	+22	+22	+4,464.0%	49
Nursing/ Midwifery Student	3	9	2	25	24	-7	+22	-1	+15	+21	+168.5%	50
Nursing/ Midwifery other	4	3	3	3	3	+0	+0	+0	+0	-1	+1.0%	3
Nursing & Midwifery	515	523	526	540	532	+2	+6	-8	+8	+17	+1.6%	587
Therapy Professions	44	36	35	36	37	-1	+3	+1	+2	-7	+4.5%	40
Social Care	7	6	5	4	4	-1	-1	-0	-2	-3	-36.8%	5
Social Workers	41	50	52	52	52	+2	-0	+0	+2	+11	+4.0%	60
Psychologists	39	36	39	39	39	+3	+0	+0	+3	-0	+7.9%	40
Pharmacy	1	2	3	2	3	+1	-0	+0	+1	+2	+58.5%	4
H&SC, Other	20	16	18	19	18	+2	+1	-0	+2	-2	+13.8%	22
Health & Social Care Professionals	154	146	151	152	153	+5	+2	+1	+7	-0	+5.0%	171
Management (VIII & above)	3	3	4	4	4	+1	+0	+0	+1	+1	+33.3%	4
Administrative/ Supervisory (V to VII)	22	28	30	31	31	+2	+1	-0	+2	+8	+8.3%	32
Clerical (III & IV)	88	88	102	100	99	+15	-4	-1	+11	+10	+12.6%	109
Management & Administrative	114	119	136	135	133	+17	-3	-1	+14	+20	+12.1%	145
Support	33	27	23	24	23	-4	-0	-1	-4	-10	-15.7%	26
Maintenance/ Technical	26	25	28	28	28	+4	-1	-0	+3	+2	+12.4%	28
General Support	59	52	51	52	50	-0	-1	-1	-1	-8	-2.3%	54
Health Care Assistants	157	152	150	155	153	-2	+3	-2	+1	-4	+1.0%	165
Care, other	4	5	3	3	3	-1	-0	+0	-1	-0	-24.9%	4
Patient & Client Care	160	156	153	158	157	-3	+3	-2	+0	-4	+0.2%	169



Mental Health Employment Report by Grade Group: MAY 2024

CHO 9

MAY 2024	WTE DEC 2019	WTE DEC 2022	WTE DEC 2023	WTE APR 2024	WTE MAY 2024	WTE Change 2023	WTE Change 2024	WTE Change APR 2024	WTE Change Dec 2022 to MAY 2024	WTE Change Dec 2019 to MAY 2024	% WTE Change Dec 2022 to MAY 2024	No. MAY 2024
Total CHO 9	1272	1371	1338	1345	1348	-33	+10	+3	-23	+77	-1.7%	1,490
Consultants	50	55	59	58	58	+3	-0	+0	+3	+8	+5.5%	60
Registrars	31	57	46	45	47	-11	+1	+2	-10	+16	-18.0%	48
SHO/ Interns	53	36	54	58	59	+18	+5	+1	+23	+6	+64.3%	60
Medical & Dental	134	148	158	160	164	+10	+5	+4	+16	+30	+10.7%	168
Nurse/ Midwife Manager	132	138	146	142	140	+8	-6	-2	+2	+8	+1.5%	146
Nurse/ Midwife Specialist & AN/MP	65	99	98	97	99	-1	+1	+2	+1	+34	+0.6%	104
Staff Nurse/ Staff Midwife	351	351	315	323	323	-36	+8	-0	-28	-29	-8.1%	356
<i>Nursing/ Midwifery awaiting registration</i>	11	14	6	1	1	-8	-5	-5	-13	-10	-92.8%	1
<i>Pre-registration Nurse/ Midwife Intern</i>	10	8	7	26	26	-1	+19	+19	+18	+16	+225.0%	52
Nursing/ Midwifery Student	21	22	13	27	27	-9	+14	-0	+5	+6	+23.9%	53
Nursing/ Midwifery other	11	9	8	9	9	-1	+0	-1	-1	-3	-7.9%	10
Nursing & Midwifery	581	619	580	598	597	-39	+18	-1	-21	+17	-3.4%	669
Therapy Professions	55	60	53	49	48	-7	-4	-1	-12	-7	-19.5%	54
Social Care	1	1	1	1	1	+0	+0	+0	+0	+0	+1.0%	1
Social Workers	43	57	55	53	54	-2	-1	+1	-2	+11	-4.3%	59
Psychologists	46	56	59	60	60	+3	+1	+1	+4	+15	+7.7%	68
Pharmacy	8	7	10	10	10	+3	+0	+0	+3	+2	+45.7%	14
H&SC, Other	15	17	19	20	18	+1	-0	-1	+1	+4	+6.1%	21
Health & Social Care Professionals	167	198	196	193	192	-2	-4	-0	-6	+25	-2.8%	217
Management (VIII & above)	5	5	6	6	6	+1	-0	+0	+1	+1	+20.1%	6
Administrative/ Supervisory (V to VII)	28	38	41	38	38	+3	-3	+1	+0	+11	+0.2%	41
Clerical (III & IV)	104	109	110	107	107	+1	-2	+0	-1	+4	-1.0%	122
Management & Administrative	137	152	156	151	152	+5	-5	+1	-0	+15	0.0%	169
Support	103	95	88	87	94	-7	+6	+7	-1	-9	-0.7%	109
Maintenance/ Technical	11	11	8	9	9	-3	+1	+0	-2	-2	-17.6%	9
General Support	114	106	96	96	103	-9	+7	+7	-3	-11	-2.5%	118
Health Care Assistants	126	137	139	135	128	+2	-11	-7	-8	+2	-6.2%	137
Care, other	13	12	12	12	11	-0	-1	-1	-1	-1	-6.7%	12
Patient & Client Care	139	149	151	147	140	+2	-12	-7	-9	+1	-6.2%	149



Mental Health Employment Report by Grade Group: MAY 2024

other Community Services

MAY 2024	WTE DEC 2019	WTE DEC 2022	WTE DEC 2023	WTE APR 2024	WTE MAY 2024	WTE Change 2023	WTE Change 2024	WTE Change APR 2024	WTE Change Dec 2022 to MAY 2024	WTE Change Dec 2019 to MAY 2024	% WTE Change Dec 2022 to MAY 2024	No. MAY 2024
Total other Community Services	438	511	580	581	579	+69	-1	-2	+68	+141	+13.3%	601
Consultants	16	15	16	16	16	+2	+0	+0	+2	+1	+11.6%	18
Registrars	13	19	18	14	16	-1	-2	+1	-3	+3	-17.6%	16
SHO/ Interns											-100.0%	
Medical & Dental	29	34	34	30	32	+1	-2	+2	-2	+3	-4.8%	34
Nurse/ Midwife Manager	62	81	83	81	80	+3	-3	-1	-0	+18	-0.4%	83
Nurse/ Midwife Specialist & AN/MP	8	11	11	11	11	+0	+0	+0	+0	+3	+2.3%	12
Staff Nurse/ Staff Midwife	169	151	167	177	175	+16	+8	-2	+24	+6	+15.9%	182
<i>Nursing/ Midwifery awaiting registration</i>			2			+2	-2	-2			-100.0%	
<i>Pre-registration Nurse/ Midwife Intern</i>			1			+1	-1	-1			-100.0%	
Nursing/ Midwifery Student			3			+3	-3				-100.0%	
Nursing/ Midwifery other	1	2	2	2	2	+0	+0	-0	+0	+1	+1.0%	2
Nursing & Midwifery	240	245	266	271	269	+22	+2	-3	+24	+28	+9.8%	279
Therapy Professions	11	10	10	9	9	+0	-1	+0	-1	-2	-8.3%	9
Social Care	2	1	2	2	2	+1	-0	+0	+1	-0	+96.0%	2
Social Workers	15	11	14	15	15	+3	+1	+0	+4	-0	+37.6%	16
Psychologists	6	5	4	4	4	-1	+0	+0	-1	-2	-25.7%	4
Pharmacy		2	3	1	1	+1	-2	+0	-1	+1	-49.5%	1
Health & Social Care Professionals	34	29	33	31	31	+4	-2	+0	+2	-3	+6.5%	32
Management (VIII & above)	27	33	33	33	33	+0	-0	+0	+0	+6	+1.1%	33
Administrative/ Supervisory (V to VII)	31	46	59	59	59	+13	-0	+0	+13	+28	+28.9%	60
Clerical (III & IV)	25	28	34	35	34	+6	+0	-1	+6	+9	+23.1%	35
Management & Administrative	83	106	126	127	126	+20	+0	-0	+20	+43	+18.9%	128
Support	12	25	17	18	18	-7	+0	-0	-7	+5	-29.1%	19
Maintenance/ Technical	2	8	5	7	7	-3	+2	+0	-1	+5	-7.2%	8
General Support	14	33	23	25	25	-10	+2	+0	-8	+11	-23.8%	27
Health Care Assistants	37	64	83	83	82	+19	-1	-0	+18	+46	+27.9%	87
Care, other	1	0	14	14	14	+14	-0	+0	+13	+13	+2,825.5%	14
Patient & Client Care	37	65	97	96	96	+32	-1	-0	+31	+59	+48.1%	101

Mental Health Employment Report by Grade Group: MAY 2024

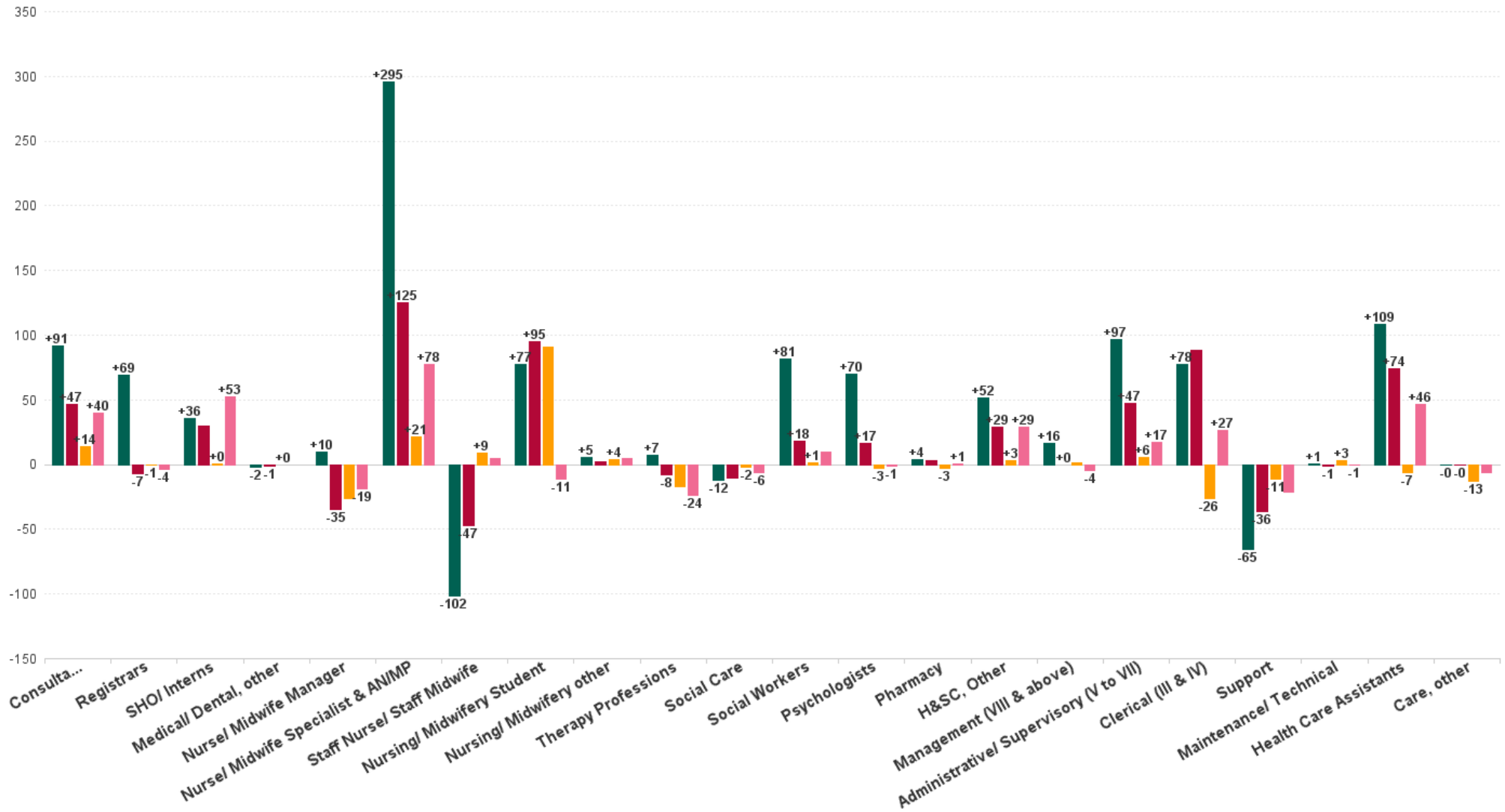
MAY 2024	WTE DEC 2019	WTE DEC 2022	WTE DEC 2023	WTE APR 2024	WTE MAY 2024	WTE Change 2023	WTE Change 2024	WTE Change APR 2024	WTE Change Dec 2022 to MAY 2024	WTE Change Dec 2019 to MAY 2024	% WTE Change Dec 2022 to MAY 2024	No. MAY 2024
Overall	9,967	10,453	10,838	10,927	10,883	+385	+45	-44	+430	+916	4.11%	11,931
Consultant Medicine	1	1	1	1	1	+0	+0	+0	+0	+0	0.00%	1
Consultant Psychiatry	352	396	429	439	443	+33	+14	+4	+47	+91	11.84%	481
Consultants	353	397	430	440	444	+33	+14	+4	+47	+91	11.81%	482
Registrar	169	217	208	213	215	-9	+8	+3	-2	+46	-0.74%	223
Senior Registrar	97	126	127	120	121	+1	-5	+1	-4	+24	-3.44%	132
Specialist Registrar	3	2	4	2	1	+2	-3	-1	-1	-2	-49.75%	1
Registrars	269	345	339	335	338	-6	-1	+3	-7	+69	-2.01%	356
Interns	8	5	7	6	5	+2	-2	-1	-0	-3	-1.42%	5
Senior House Officer	253	262	290	291	292	+28	+2	+1	+30	+39	11.45%	298
SHO/ Interns	261	267	297	297	297	+30	+0	+1	+30	+36	11.21%	303
Other Medical	5	4	3	3	3	-1	+0	+0	-1	-2	-24.04%	6
Medical/ Dental, other	5	4	3	3	3	-1	+0	+0	-1	-2	-24.04%	6
Medical & Dental	888	1,013	1,069	1,074	1,082	+56	+13	+8	+69	+194	6.81%	1,147
Clinical Nurse/ Midwife Manager 1	142	142	135	135	135	-7	+0	-0	-7	-7	-4.91%	140
Clinical Nurse/ Midwife Manager 2	755	781	768	758	745	-12	-23	-13	-36	-10	-4.58%	791
Clinical Nurse/ Midwife Manager 3	111	113	119	113	117	+6	-3	+4	+3	+5	2.90%	120
Director Nursing/Midwifery, Assistant	165	176	183	187	184	+7	+0	-3	+8	+19	4.42%	189
Director of Nursing/Midwifery	29	34	32	30	31	-2	-1	+0	-3	+2	-8.65%	31
Nurse/ Midwife Manager	1,201	1,245	1,237	1,223	1,211	-8	-26	-12	-35	+10	-2.77%	1,271
Advanced Nurse/ Midwife Practitioner	19	48	59	65	66	+11	+7	+1	+17	+47	35.99%	68
Adv. Nurse/ Midwife, Candidate	11	20	29	26	26	+9	-3	+0	+6	+15	30.68%	27
Clinical Nurse/ Midwife Spec., Candidate			1	1	1	+1	+0	+0	+1	+1	-100.00%	1
Clinical Nurse/ Midwife Specialist	430	563	645	659	663	+83	+17	+4	+100	+232	17.83%	708
Nurse/ Midwife Specialist & AN/MP	460	631	734	751	756	+104	+21	+5	+125	+295	19.78%	804
Staff Nurse [Intellectual Disability]	5	7	7	14	18	+0	+11	+4	+12	+14	173.08%	20
Staff Nurse [Psychiatric]	2,890	2,835	2,792	2,808	2,777	-43	-15	-30	-58	-113	-2.04%	3,004
Staff Nurses [General/ Children's]	108	106	93	92	105	-13	+12	+13	-1	-3	-0.92%	117
Staff Nurse/ Staff Midwife	3,002	2,948	2,892	2,913	2,901	-56	+9	-13	-47	-102	-1.60%	3,141
Nursing/ Midwifery awaiting registration	57	39	56	6	3	+17	-53	-3	-36	-54	-92.26%	3
Post-registration Nurse/ Midwife Student	1									-1	-100.00%	
Pre-registration Nurse/ Midwife Intern	25	26	14	161	157	-13	+143	-4	+131	+132	495.00%	322
Nursing/ Midwifery Student	83	65	69	167	160	+4	+91	-7	+95	+77	145.80%	325
Nursing Education/Clinical	32	34	33	37	37	-2	+4	-1	+2	+5	6.63%	41
Nursing/ Midwifery other	32	34	33	37	37	-2	+4	-1	+2	+5	6.63%	41
Nursing & Midwifery	4,778	4,924	4,965	5,091	5,064	+42	+98	-28	+140	+286	2.85%	5,582
Dietitians	19	18	24	25	25	+6	+1	+0	+7	+6	40.67%	28
Occupational Therapists	337	346	353	341	334	+7	-19	-7	-12	-2	-3.48%	369
Physiotherapists	2	3	1	1	1	-2	+0	+0	-2	-1	-67.35%	2
Podiatrists & Chiropodists	1	1				-1			-1	-1	-100.00%	
Speech & Language Therapists	62	68	66	70	67	-2	+1	-3	-1	+5	-1.20%	79
Therapy Professions	420	435	444	437	427	+9	-17	-9	-8	+7	-1.88%	478
Social Care	74	72	63	61	61	-9	-2	-0	-10	-12	-14.53%	70
Social Care	74	72	63	61	61	-9	-2	-0	-10	-12	-14.53%	70
Social Workers	350	414	431	433	432	+17	+1	-1	+18	+81	4.40%	477
Social Workers	350	414	431	433	432	+17	+1	-1	+18	+81	4.40%	477
Psychologists	394	448	467	465	465	+20	-3	-0	+17	+70	3.72%	509
Psychologists	394	448	467	465	465	+20	-3	-0	+17	+70	3.72%	509
Pharmacists	16	16	21	18	18	+5	-3	+0	+2	+2	15.23%	23
Pharmacy Technicians	2	4	5	5	5	+1	+0	+0	+1	+2	22.04%	7
Pharmacy	19	19	25	22	22	+6	-3	+0	+3	+4	16.55%	30
Counsellor Therapists	95	124	145	154	152	+21	+8	-1	+28	+58	22.67%	172
HSCP Trainees/Students			4			+4	-4				-100.00%	
Other Health & Social Care	11	3	3	3	2	-0	-0	-0	-1	-9	-21.07%	6
Play Therapists/ Specialists	1	3	4	4	4	+1	+0	+0	+1	+3	32.15%	5
H&SC, Other	107	130	155	160	159	+25	+3	-2	+29	+52	21.89%	183
Health & Social Care Professionals	1,364	1,518	1,586	1,579	1,566	+68	-20	-12	+48	+202	3.16%	1,747
Executive Management	11	14	16	16	16	+2	-0	+0	+2	+5	13.53%	16
Senior Management (VIII & GM)	47	61	58	57	59	-3	+1	+2	-2	+11	-3.10%	60
Management (VIII & above)	58	75	73	73	75	-1	+1	+2	+0	+16	0.00%	76
Middle Management (V-VII)	236	285	327	334	333	+42	+6	-0	+48	+97	16.81%	348
Other Administrative	2	2	2	1	1	+0	-1	+0	-1	-1	-36.31%	1
Administrative/ Supervisory (V to VII)	238	287	329	335	334	+42	+6	-0	+47	+97	16.52%	349



MAY 2024	WTE DEC 2019	WTE DEC 2022	WTE DEC 2023	WTE APR 2024	WTE MAY 2024	WTE Change 2023	WTE Change 2024	WTE Change APR 2024	WTE Change Dec 2022 to MAY 2024	WTE Change Dec 2019 to MAY 2024	% WTE Change Dec 2022 to MAY 2024	No. MAY 2024
Overall	9,967	10,453	10,838	10,927	10,883	+385	+45	-44	+430	+916	4.11%	11,931
General Administrative (III & IV)	717	707	821	803	795	+115	-26	-8	+88	+78	12.50%	877
Clerical (III & IV)	717	707	821	803	795	+115	-26	-8	+88	+78	12.50%	877
Management & Administrative	1,014	1,068	1,223	1,211	1,204	+155	-19	-7	+136	+190	12.71%	1,302
Catering	66	68	68	68	68	+0	+0	+0	+1	+3	1.14%	75
Household Services	424	397	388	374	380	-9	-9	+6	-18	-45	-4.44%	436
Other Support	47	40	30	31	30	-10	+0	-1	-10	-16	-24.62%	36
Portering	48	51	44	41	41	-7	-3	+0	-9	-7	-18.67%	42
Support	585	556	530	514	520	-25	-11	+6	-36	-65	-6.51%	589
Maintenance	127	129	125	126	128	-4	+3	+2	-1	+1	-0.70%	131
Maintenance/ Technical	127	129	125	126	128	-4	+3	+2	-1	+1	-0.70%	131
General Support	712	685	655	640	647	-29	-8	+7	-37	-65	-5.42%	720
Attendant/ Aide	605	423	409	400	389	-14	-20	-12	-34	-216	-8.01%	431
Health Care Assistant/ Care Assistant	382	588	665	670	670	+76	+6	+0	+82	+288	13.90%	703
Health & Social Care Assistants	9	19	38	45	45	+18	+8	+0	+26	+36	136.57%	48
Health Care Assistants	996	1,030	1,111	1,116	1,104	+81	-7	-11	+74	+109	7.19%	1,182
Health Promotion											-100.00%	
Home Care Services	16	23	21	15	15	-2	-6	-0	-8	-1	-36.21%	20
Other Care Grades	23	19	41	46	46	+22	+5	+1	+27	+24	141.41%	51
Pastoral Care	13	9	10	8	8	+1	-2	+0	-1	-5	-15.62%	13
Workshop Services	165	164	157	148	147	-7	-11	-1	-17	-18	-10.61%	167
Care, other	216	216	229	217	216	+13	-13	-1	-0	-0	-0.05%	251
Patient & Client Care	1,212	1,246	1,340	1,332	1,320	+94	-20	-12	+74	+109	5.93%	1,433

WTE Change by Staff Category

■ WTE change since DEC 2019
 ■ WTE change since DEC 2022
 ■ WTE change since DEC 2023
 ■ WTE change since MAY 2023



Mental Health Employment Report by WTE, Headcount, Gender, Full-Time / Part-Time etc. MAY 2024

MAY 2024	WTE MAY 2024	No. MAY 2024	WTE : No	% Male	% Female	Male WTE : No.	Female WTE : No	Perm Count %	Perm Count Male %	Perm Count Female %	Fulltime Count %	Part time Count %	FT Count Male %	FT Count Female %
Total	10,883	11,931	1:0.9	26.65%	73.35%	1:1	1:0.9	84.70%	21.93%	62.77%	86.28%	13.72%	94.18%	83.41%
Consultants	443.89	482	1:0.9	42.12%	57.88%	1:0.9	1:0.9	71.78%	30.29%	41.49%	85.89%	14.11%	92.12%	81.36%
Registrars	337.82	356	1:0.9	43.26%	56.74%	1:1	1:0.9	3.93%	1.97%	1.97%	93.54%	6.46%	99.35%	89.11%
SHO/ Interns	297.05	303	1:1	38.61%	61.39%	1:1	1:1	0.66%		0.66%	98.35%	1.65%	100.00%	97.31%
Medical/ Dental, other	2.97	6	1:0.5	50.00%	50.00%	1:0.4	1:0.5	50.00%	16.67%	33.33%	33.33%	66.67%	33.33%	33.33%
Medical & Dental	1,082	1,147	1:0.9	41.59%	58.41%	1:1	1:0.9	31.82%	13.43%	18.40%	91.28%	8.72%	96.02%	87.91%
Nurse/ Midwife Manager	1,210.87	1,271	1:1	37.21%	62.79%	1:1	1:0.9	98.66%	36.59%	62.08%	94.73%	5.27%	98.10%	92.73%
Nurse/ Midwife Specialist & AN/MP	755.56	804	1:0.9	18.66%	81.34%	1:1	1:0.9	99.63%	18.53%	81.09%	92.54%	7.46%	98.00%	91.28%
Staff Nurse/ Staff Midwife	2,900.52	3,141	1:0.9	24.67%	75.33%	1:0.9	1:0.9	92.04%	21.97%	70.07%	88.06%	11.94%	91.61%	86.90%
Nursing/ Midwifery Student	160.14	325	1:0.5	14.77%	85.23%	1:0.5	1:0.5	1.23%		1.23%	100.00%		100.00%	100.00%
Nursing/ Midwifery other	36.66	41	1:0.9	12.20%	87.80%	1:1	1:0.9	100.00%	12.20%	87.80%	92.68%	7.32%	100.00%	91.67%
Nursing & Midwifery	5,064	5,582	1:0.9	25.99%	74.01%	1:0.9	1:0.9	89.41%	23.45%	65.96%	90.95%	9.05%	94.69%	89.64%
Therapy Professions	427.26	478	1:0.9	8.79%	91.21%	1:0.9	1:0.9	97.49%	8.79%	88.70%	84.10%	15.90%	90.48%	83.49%
Social Care	61.42	70	1:0.9	21.43%	78.57%	1:0.8	1:0.9	98.57%	21.43%	77.14%	70.00%	30.00%	80.00%	67.27%
Social Workers	431.8	477	1:0.9	17.61%	82.39%	1:1	1:0.9	95.60%	16.77%	78.83%	84.07%	15.93%	95.24%	81.68%
Psychologists	464.52	509	1:0.9	19.45%	80.55%	1:1	1:0.9	75.25%	16.31%	58.94%	83.30%	16.70%	97.98%	79.76%
Pharmacy	22.4	30	1:0.7	13.33%	86.67%	1:0.9	1:0.7	96.67%	13.33%	83.33%	43.33%	56.67%	75.00%	38.46%
H&SC, Other	158.84	183	1:0.9	18.58%	81.42%	1:0.9	1:0.9	93.99%	18.03%	75.96%	69.40%	30.60%	85.29%	65.77%
Health & Social Care Professionals	1,566	1,747	1:0.9	15.91%	84.09%	1:1	1:0.9	90.15%	14.71%	75.44%	81.05%	18.95%	93.17%	78.76%
Management (VIII & above)	74.59	76	1:1	31.58%	68.42%	1:1	1:1	98.68%	30.26%	68.42%	98.68%	1.32%	95.83%	100.00%
Administrative/ Supervisory (V to VII)	334.46	349	1:1	20.63%	79.37%	1:1	1:0.9	96.28%	19.77%	76.50%	89.40%	10.60%	98.61%	87.00%
Clerical (III & IV)	794.97	877	1:0.9	9.12%	90.88%	1:1	1:0.9	86.89%	8.10%	78.79%	79.02%	20.98%	95.00%	77.42%
Management & Administrative	1,204	1,302	1:0.9	13.52%	86.48%	1:1	1:0.9	90.09%	12.52%	77.57%	82.95%	17.05%	96.59%	80.82%
Support	519.6	589	1:0.9	29.71%	70.29%	1:1	1:0.9	95.42%	27.67%	67.74%	64.86%	35.14%	90.29%	54.11%
Maintenance/ Technical	127.83	131	1:1	99.24%	0.76%	1:1	1:1	95.42%	94.66%	0.76%	97.71%	2.29%	97.69%	100.00%
General Support	647	720	1:0.9	42.36%	57.64%	1:1	1:0.9	95.42%	39.86%	55.56%	70.83%	29.17%	93.44%	54.22%
Health Care Assistants	1,104.18	1,182	1:0.9	31.81%	68.19%	1:1	1:0.9	92.55%	29.27%	63.28%	82.99%	17.01%	93.35%	78.16%
Care, other	215.88	251	1:0.9	46.61%	53.39%	1:0.9	1:0.8	88.05%	40.24%	47.81%	72.91%	27.09%	83.76%	63.43%
Patient & Client Care	1,320	1,433	1:0.9	34.40%	65.60%	1:0.9	1:0.9	91.77%	31.19%	60.57%	81.23%	18.77%	91.08%	76.06%



Mental Health Employment Report by WTE, Headcount, Gender, Full-Time / Part-Time etc. MAY 2024

MAY 2024	WTE MAY 2024	No. MAY 2024	WTE : No	% Male	% Female	Male WTE : No.	Female WTE : No	Perm Count %	Number Male %	Number Female %	Fulltime Count %	Part time Count %	FT Count Male %	FT Count Female %
Total	10,883	11,931	1:0.9	26.65%	73.35%	1:1	1:0.9	84.70%	21.93%	62.77%	86.28%	13.72%	94.18%	83.41%
CHO 1	1,056	1,144	1:0.9	25.44%	74.56%	1:1	1:0.9	89.25%	22.03%	67.22%	88.02%	11.98%	96.22%	85.23%
CHO 2	1,370	1,495	1:0.9	27.56%	72.44%	1:0.9	1:0.9	86.76%	22.54%	64.21%	86.49%	13.51%	92.72%	84.12%
CHO 3	852	930	1:0.9	21.40%	78.60%	1:1	1:0.9	82.26%	17.63%	64.62%	87.96%	12.04%	92.46%	86.73%
CHO 4	1,602	1,777	1:0.9	25.10%	74.90%	1:0.9	1:0.9	76.81%	18.74%	58.08%	82.89%	17.11%	92.38%	79.71%
CHO 5	1,326	1,469	1:0.9	24.85%	75.15%	1:0.9	1:0.9	88.77%	20.83%	67.94%	81.96%	18.04%	92.33%	78.53%
CHO 6	688	771	1:0.9	29.44%	70.56%	1:0.9	1:0.9	85.60%	24.77%	60.83%	83.92%	16.08%	91.63%	80.70%
CHO 7	927	1,013	1:0.9	23.59%	76.41%	1:1	1:0.9	83.22%	18.95%	64.26%	89.93%	10.07%	97.07%	87.73%
CHO 8	1,135	1,241	1:0.9	25.14%	74.86%	1:1	1:0.9	84.45%	20.15%	64.30%	86.95%	13.05%	96.47%	83.75%
CHO 9	1,348	1,490	1:0.9	28.05%	71.95%	1:1	1:0.9	83.89%	23.09%	60.81%	86.44%	13.56%	96.41%	82.56%
other Community Services	579	601	1:1	45.09%	54.91%	1:1	1:1	92.01%	41.26%	50.75%	95.51%	4.49%	94.46%	96.36%



Previous Month Summary

	% WTE change since APR 2024	WTE change since APR 2024	CHO 1	CHO 2	CHO 3	CHO 4	CHO 5	CHO 6	CHO 7	CHO 8	CHO 9	other Community Services
Total	-0.4%	-43.8	+5.7	+9.1	+0.7	-13.1	+0.8	+5.2	+15.1	+12.7	+9.9	-0.9
Consultants	+1.0%	+4.3	+4.2	+0.0	-0.5	-0.8	-0.8	+3.0	+5.6	+3.3	-0.4	+0.2
Registrars	+0.8%	+2.8	-1.4	+5.2	+5.0	-3.2	+2.0	-1.5	-3.2	-2.1	+1.0	-2.5
SHO/ Interns	+0.2%	+0.5	-0.2	-1.3	-7.0	+3.9	+0.0	-1.1	-2.9	+3.9	+4.8	
Medical/ Dental, other	+0.0%	+0.0				+0.0	+0.0					
Medical & Dental	+0.7%	+7.6	+2.6	+3.8	-2.5	-0.1	+1.2	+0.4	-0.4	+5.1	+5.4	-2.3
Nurse/ Midwife Manager	-1.0%	-12.1	-3.6	-5.8	-3.9	+10.7	+3.3	-7.8	+2.2	-12.8	-5.8	-2.9
Nurse/ Midwife Specialist & AN/MP	+0.6%	+4.6	+1.1	+1.3	-1.6	-1.8	-1.8	+21.9	-2.4	+3.1	+1.3	+0.0
Staff Nurse/ Staff Midwife	-0.4%	-12.9	+5.6	+13.8	-5.3	-25.7	+4.6	-8.5	+14.9	-6.7	+8.0	+8.0
Nursing/ Midwifery Student	-3.9%	-6.5	+5.3	+5.8	+12.5	+21.1	-1.8	+7.2	+7.4	+22.3	+14.1	-3.0
Nursing/ Midwifery other	-2.1%	-0.8	+0.0	+1.0	+0.0	+1.0	-0.1	-0.2	+2.1	+0.0	+0.3	+0.0
Nursing & Midwifery	-0.5%	-27.7	+8.4	+16.1	+1.7	+5.3	+4.2	+12.6	+24.2	+6.0	+17.8	+2.1
Therapy Professions	-2.1%	-9.3	-2.0	-0.8	-1.5	-5.5	-1.6	-3.0	-0.3	+3.0	-4.3	-1.0
Social Care	-0.1%	-0.1	+0.0	+0.1	-0.1	+1.0	+0.3	-0.1	-1.6	-1.1	+0.0	-0.1
Social Workers	-0.3%	-1.3	+1.3	+1.8	+0.7	-2.1	+1.1	-1.7	+0.2	-0.4	-0.7	+1.1
Psychologists	0.0%	-0.2	+1.6	-1.5	+1.3	-3.7	-0.5	-1.7	+0.5	+0.1	+1.1	+0.0
Pharmacy	+0.2%	+0.0	-0.2	+0.0	+0.1	-0.8			-0.1	-0.0	+0.1	-2.0



H&SC, Other	-0.9%	-1.5	+3.7	+0.4	+1.7	-1.8	+0.2	-1.1	-0.2	+0.6	-0.1	
Health & Social Care Professionals	-0.8%	-12.3	+4.5	-0.0	+2.1	-12.9	-0.5	-7.6	-1.5	+2.2	-3.9	-2.0
Management (VIII & above)	+2.2%	+1.6	-0.5	+1.0	-0.0	+0.0	+0.0	+0.0	+0.9	+0.0	-0.1	-0.0
Administrative/ Supervisory (V to VII)	0.0%	-0.2	+1.8	+2.8	+1.2	+0.6	+0.8	+0.1	+0.4	+0.7	-2.5	-0.0
Clerical (III & IV)	-1.0%	-8.2	-3.9	-5.8	-3.0	-0.1	-3.0	+0.1	-5.1	-3.6	-2.1	+0.1
Management & Administrative	-0.6%	-6.7	-2.6	-1.9	-1.8	+0.5	-2.2	+0.1	-3.8	-2.8	-4.7	+0.0
Support	+1.1%	+5.7	-5.3	-3.1	+1.0	-2.5	-3.1	-4.4	+0.8	-0.2	+5.8	+0.2
Maintenance/ Technical	+1.3%	+1.7	-0.1	-0.5	+3.0	+0.0	+0.0	-1.8	+0.0	-0.8	+1.0	+2.2
General Support	+1.1%	+7.3	-5.4	-3.5	+4.0	-2.5	-3.1	-6.2	+0.8	-1.0	+6.8	+2.4
Health Care Assistants	-1.0%	-11.5	-0.9	+2.4	-2.7	-3.3	+0.2	+6.2	-0.2	+3.3	-10.9	-0.8
Care, other	-0.3%	-0.7	-1.0	-7.8	-0.1	-0.1	+1.0	-0.4	-3.9	-0.1	-0.8	-0.3
Patient & Client Care	-0.9%	-12.1	-1.8	-5.4	-2.7	-3.3	+1.3	+5.8	-4.1	+3.2	-11.7	-1.1



Year on Year Summary

	% WTE change since MAY 2023	WTE change since MAY 2023	CHO 1	CHO 2	CHO 3	CHO 4	CHO 5	CHO 6	CHO 7	CHO 8	CHO 9	other Community Services
Total	+1.9%	+211.3	+0.5	+22.7	+25.9	+28.5	+36.0	+26.3	+17.3	-1.5	+1.1	+54.6
Consultants	+0.4%	+39.9	+4.4	+3.7	+0.2	+6.1	+2.5	+7.1	+7.5	+5.2	+2.6	+0.7
Registrars	0.0%	-3.6	-0.8	+14.5	-1.0	-0.8	-0.1	-0.9	-9.8	+2.6	-10.4	+3.0
SHO/ Interns	+0.5%	+52.6	+1.0	-4.4	-2.0	+14.1	+5.9	+2.4	+7.4	+6.9	+23.2	-2.0
Medical/ Dental, other	+0.0%	+0.0				+0.0	+0.0					
Medical & Dental	+0.8%	+88.9	+4.7	+13.8	-2.9	+19.4	+8.3	+8.6	+5.1	+14.7	+15.5	+1.7
Nurse/ Midwife Manager	-0.2%	-18.6	-6.1	+1.8	+5.3	+14.5	-7.3	-7.4	-10.9	-10.9	+3.4	-1.0
Nurse/ Midwife Specialist & AN/MP	+0.7%	+77.7	+9.3	+10.9	+5.9	+10.4	+5.9	+23.3	+7.3	+4.8	-0.6	+0.5
Staff Nurse/ Staff Midwife	+0.0%	+4.4	+4.7	-6.1	+9.3	-11.3	+5.6	-20.4	+11.7	-9.5	-1.5	+21.9
Nursing/ Midwifery Student	-0.1%	-10.9	-2.2	-1.8	-3.6	-1.6	-0.5	+2.2	-1.6	-1.7	+1.0	-1.0
Nursing/ Midwifery other	+0.0%	+4.4	+0.9	+0.3	+0.0	+1.0	+0.4	-0.2	-0.2	+0.0	+2.2	-0.0
Nursing & Midwifery	+0.5%	+57.0	+6.6	+5.2	+16.8	+13.0	+4.0	-2.5	+6.3	-17.2	+4.5	+20.4
Therapy Professions	-0.2%	-23.6	-4.9	-1.5	-4.9	-3.0	-5.9	+2.9	+2.5	+0.0	-8.2	-0.7
Social Care	-0.1%	-6.2	-0.7	+0.7	-0.9	-1.2	+0.3	-2.2	-1.7	-1.3	+0.0	+0.9
Social Workers	+0.1%	+9.5	+1.2	+5.3	-0.6	-1.4	+3.6	-4.5	+2.7	+4.0	-3.3	+2.5
Psychologists	0.0%	-1.5	-1.9	-7.6	+0.5	-0.8	-2.1	+5.3	+0.1	+1.8	+3.3	+0.0



Pharmacy	+0.0%	+0.6	-0.0	+1.2	+0.0	-0.9			+0.0	-0.0	+2.4	-2.0
H&SC, Other	+0.3%	+28.6	+5.0	+11.6	+2.4	-0.3	-1.3	+8.8	+0.2	+1.6	+0.8	
Health & Social Care Professionals	+0.1%	+7.6	-1.4	+9.6	-3.7	-7.6	-5.5	+10.4	+3.8	+6.0	-5.0	+0.8
Management (VIII & above)	0.0%	-4.2	-1.6	+1.0	-0.0	-1.1	-1.0	+0.0	-0.0	+1.0	-0.1	-2.5
Administrative/ Supervisory (V to VII)	+0.2%	+17.3	+1.4	+7.4	+0.9	+3.9	+1.0	-0.7	+1.5	+3.3	-2.8	+1.3
Clerical (III & IV)	+0.2%	+26.8	-2.2	+0.6	-1.8	+14.7	+9.0	+7.3	-1.6	-5.4	-4.0	+10.2
Management & Administrative	+0.4%	+39.8	-2.4	+9.1	-1.0	+17.5	+9.0	+6.6	-0.2	-1.0	-6.9	+9.1
Support	-0.2%	-21.6	-5.4	-5.4	+1.7	-1.9	+3.3	-4.7	-1.0	-3.8	+4.5	-8.9
Maintenance/ Technical	0.0%	-0.5	-0.1	-2.1	+5.0	-1.3	-0.5	-1.8	-1.0	+0.8	-1.0	+1.4
General Support	-0.2%	-22.1	-5.5	-7.5	+6.7	-3.1	+2.8	-6.5	-2.0	-3.0	+3.5	-7.5
Health Care Assistants	+0.4%	+46.2	-0.6	+2.3	+10.8	-10.2	+17.0	+9.6	+6.0	-0.2	-9.9	+21.4
Care, other	-0.1%	-6.0	-0.9	-9.7	-1.0	-0.3	+0.3	+0.0	-1.8	-0.8	-0.6	+8.8
Patient & Client Care	+0.4%	+40.2	-1.5	-7.5	+9.9	-10.6	+17.3	+9.6	+4.2	-0.9	-10.6	+30.2



Year to Date Summary

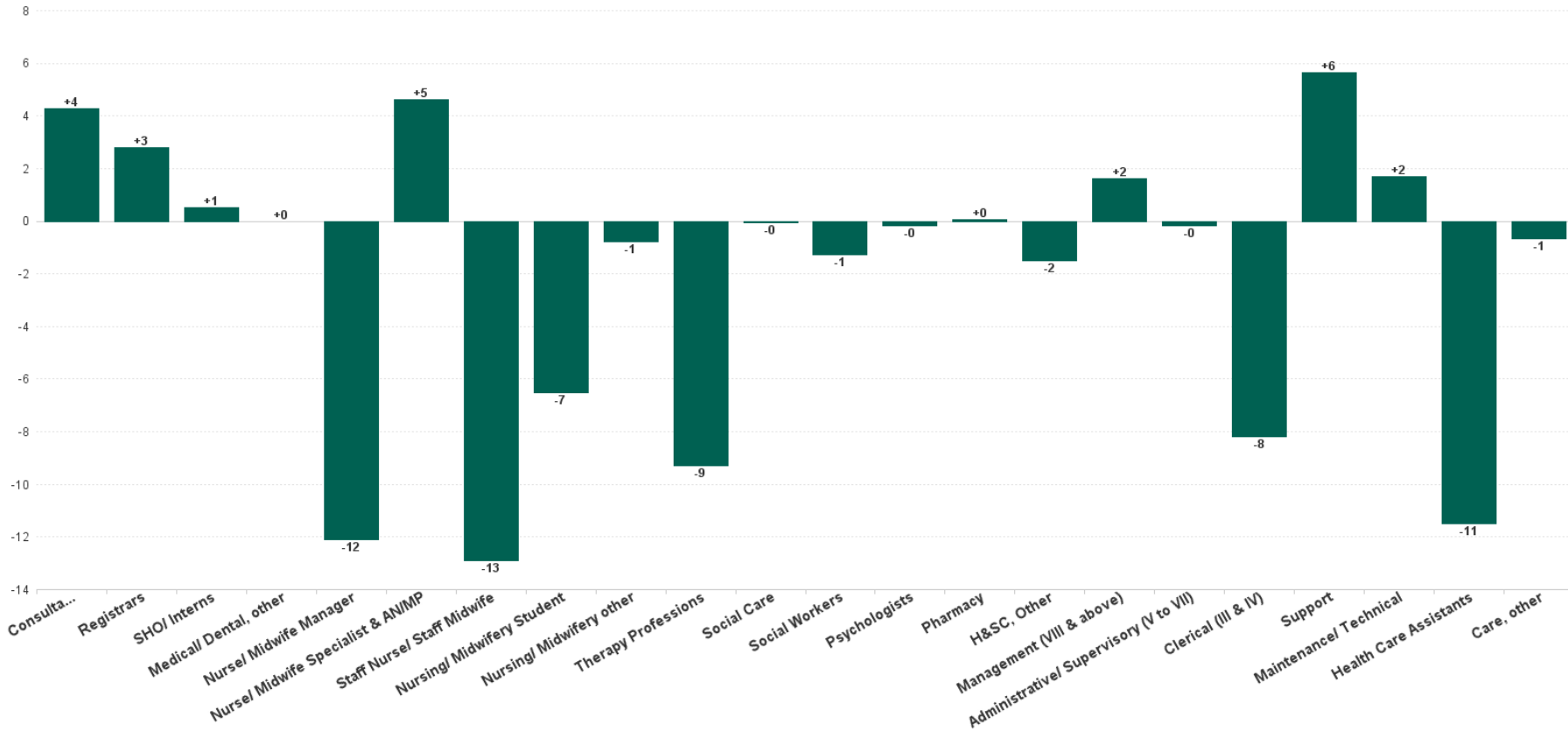
	% WTE change since DEC 2023	WTE change since DEC 2023	CHO 1	CHO 2	CHO 3	CHO 4	CHO 5	CHO 6	CHO 7	CHO 8	CHO 9	other Community Services
Total	+0.4%	+45.2	+5.7	+9.1	+0.7	-13.1	+0.8	+5.2	+15.1	+12.7	+9.9	-0.9
Consultants	+3.2%	+13.8	+4.2	+0.0	-0.5	-0.8	-0.8	+3.0	+5.6	+3.3	-0.4	+0.2
Registrars	-0.2%	-0.7	-1.4	+5.2	+5.0	-3.2	+2.0	-1.5	-3.2	-2.1	+1.0	-2.5
SHO/ Interns	+0.1%	+0.2	-0.2	-1.3	-7.0	+3.9	+0.0	-1.1	-2.9	+3.9	+4.8	
Medical/ Dental, other	+0.0%	+0.0				+0.0	+0.0					
Medical & Dental	+1.2%	+13.2	+2.6	+3.8	-2.5	-0.1	+1.2	+0.4	-0.4	+5.1	+5.4	-2.3
Nurse/ Midwife Manager	-2.1%	-26.4	-3.6	-5.8	-3.9	+10.7	+3.3	-7.8	+2.2	-12.8	-5.8	-2.9
Nurse/ Midwife Specialist & AN/MP	+2.9%	+21.2	+1.1	+1.3	-1.6	-1.8	-1.8	+21.9	-2.4	+3.1	+1.3	+0.0
Staff Nurse/ Staff Midwife	+0.3%	+8.7	+5.6	+13.8	-5.3	-25.7	+4.6	-8.5	+14.9	-6.7	+8.0	+8.0
Nursing/ Midwifery Student	+131.2%	+90.9	+5.3	+5.8	+12.5	+21.1	-1.8	+7.2	+7.4	+22.3	+14.1	-3.0
Nursing/ Midwifery other	+12.4%	+4.0	+0.0	+1.0	+0.0	+1.0	-0.1	-0.2	+2.1	+0.0	+0.3	+0.0
Nursing & Midwifery	+2.0%	+98.4	+8.4	+16.1	+1.7	+5.3	+4.2	+12.6	+24.2	+6.0	+17.8	+2.1
Therapy Professions	-3.8%	-16.9	-2.0	-0.8	-1.5	-5.5	-1.6	-3.0	-0.3	+3.0	-4.3	-1.0
Social Care	-2.6%	-1.6	+0.0	+0.1	-0.1	+1.0	+0.3	-0.1	-1.6	-1.1	+0.0	-0.1
Social Workers	+0.3%	+1.1	+1.3	+1.8	+0.7	-2.1	+1.1	-1.7	+0.2	-0.4	-0.7	+1.1
Psychologists	-0.6%	-2.9	+1.6	-1.5	+1.3	-3.7	-0.5	-1.7	+0.5	+0.1	+1.1	+0.0
Pharmacy	-11.0%	-2.8	-0.2	+0.0	+0.1	-0.8			-0.1	-0.0	+0.1	-2.0
H&SC, Other	+2.2%	+3.4	+3.7	+0.4	+1.7	-1.8	+0.2	-1.1	-0.2	+0.6	-0.1	
Health & Social Care Professionals	-1.2%	-19.6	+4.5	-0.0	+2.1	-12.9	-0.5	-7.6	-1.5	+2.2	-3.9	-2.0
Management (VIII & above)	+1.7%	+1.2	-0.5	+1.0	-0.0	+0.0	+0.0	+0.0	+0.9	+0.0	-0.1	-0.0
Administrative/ Supervisory (V to VII)	+1.8%	+5.8	+1.8	+2.8	+1.2	+0.6	+0.8	+0.1	+0.4	+0.7	-2.5	-0.0
Clerical (III & IV)	-3.2%	-26.3	-3.9	-5.8	-3.0	-0.1	-3.0	+0.1	-5.1	-3.6	-2.1	+0.1
Management & Administrative	-1.6%	-19.3	-2.6	-1.9	-1.8	+0.5	-2.2	+0.1	-3.8	-2.8	-4.7	+0.0
Support	-2.0%	-10.8	-5.3	-3.1	+1.0	-2.5	-3.1	-4.4	+0.8	-0.2	+5.8	+0.2



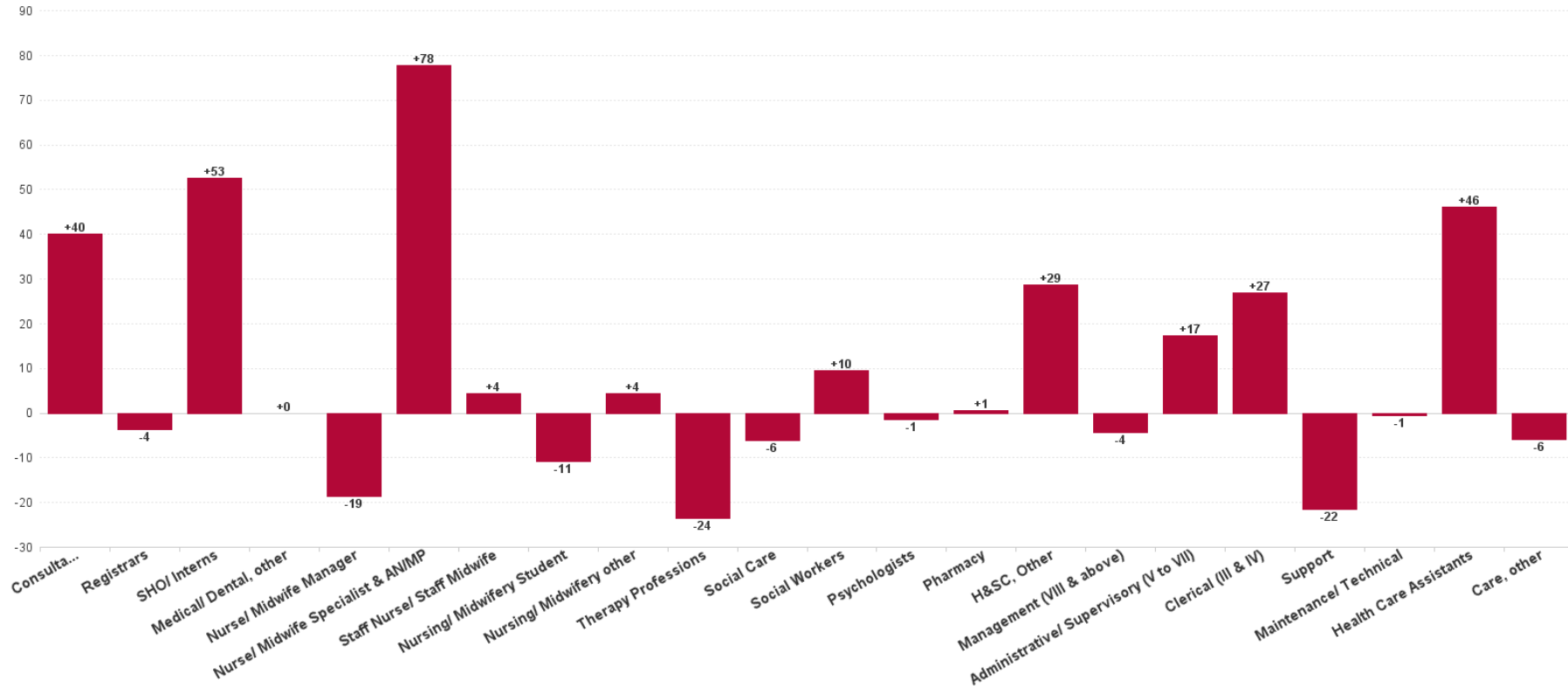
Maintenance/ Technical	+2.4%	+3.0	-0.1	-0.5	+3.0	+0.0	+0.0	-1.8	+0.0	-0.8	+1.0	+2.2
General Support	-1.2%	-7.8	-5.4	-3.5	+4.0	-2.5	-3.1	-6.2	+0.8	-1.0	+6.8	+2.4
Health Care Assistants	-0.6%	-6.5	-0.9	+2.4	-2.7	-3.3	+0.2	+6.2	-0.2	+3.3	-10.9	-0.8
Care, other	-5.8%	-13.2	-1.0	-7.8	-0.1	-0.1	+1.0	-0.4	-3.9	-0.1	-0.8	-0.3
Patient & Client Care	-1.5%	-19.8	-1.8	-5.4	-2.7	-3.3	+1.3	+5.8	-4.1	+3.2	-11.7	-1.1



Previous Month Summary Chart: Change since APR 2024



Previous Year Summary Chart: Change since MAY 2023



YTD Summary Chart: Change since DEC 2023

