

# HSE South West : SEP 2024

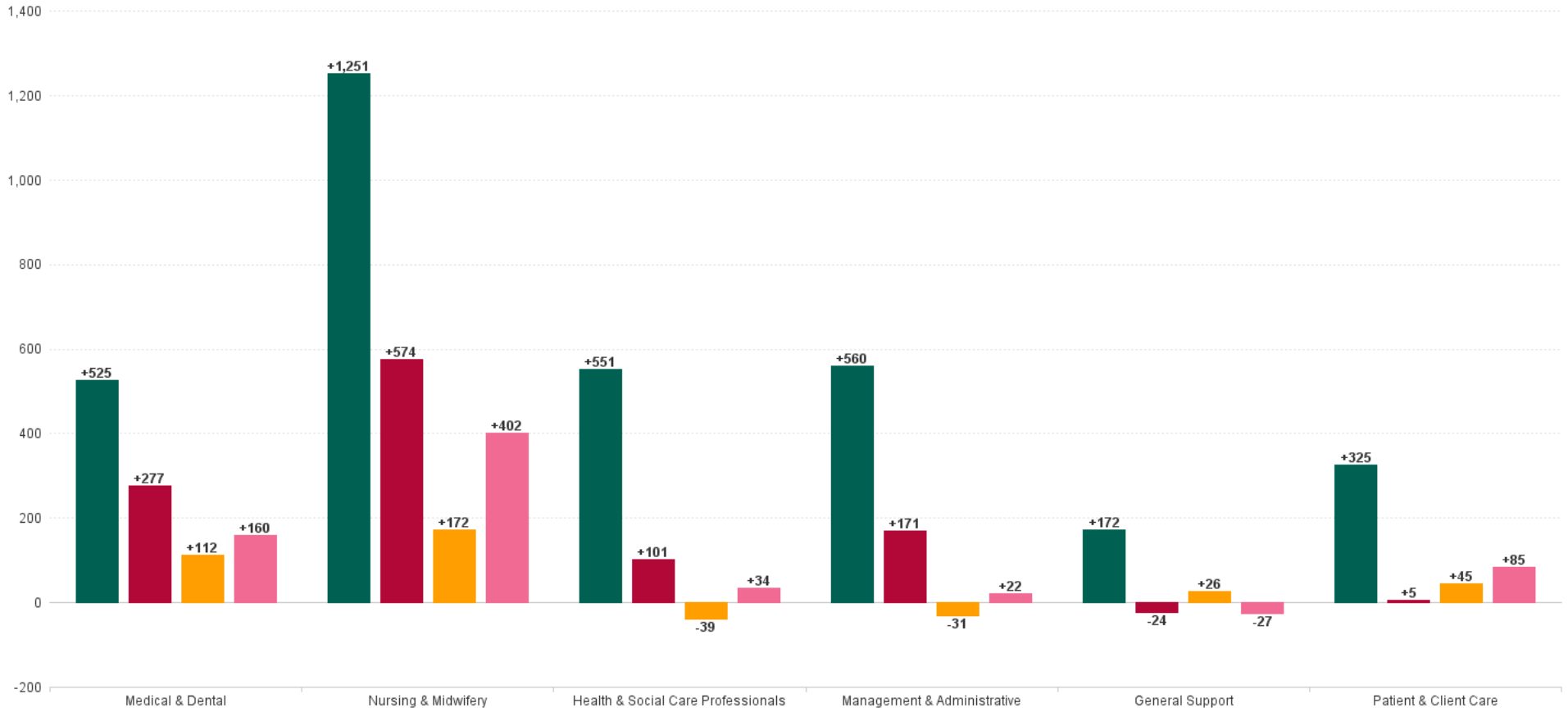
## Employment Report by Staff Group

SEP 2024	WTE DEC 2019	WTE DEC 2022	WTE DEC 2023	WTE AUG 2024	WTE SEP 2024	WTE Change 2023	WTE Change 2024	WTE Change AUG 2024	WTE Change Dec 2022 to SEP 2024	WTE Change Dec 2019 to SEP 2024	% WTE Change Dec 2022 to SEP 2024	No. SEP 2024
<b>Overall</b>	<b>15,829</b>	<b>18,109</b>	<b>18,929</b>	<b>19,310</b>	<b>19,214</b>	<b>+819</b>	<b>+285</b>	<b>-96</b>	<b>+1,105</b>	<b>+3,385</b>	<b>6.10%</b>	<b>22,565</b>
Consultants	390	461	529	576	579	+68	+50	+3	+118	+189	25.56%	632
Registrars	457	535	587	637	644	+52	+57	+7	+109	+187	20.28%	662
SHO/ Interns	409	477	531	530	547	+55	+16	+17	+70	+139	14.75%	554
Medical/ Dental, other	119	148	139	126	128	-9	-11	+3	-20	+10	-13.33%	242
<b>Medical &amp; Dental</b>	<b>1,374</b>	<b>1,622</b>	<b>1,787</b>	<b>1,869</b>	<b>1,899</b>	<b>+165</b>	<b>+112</b>	<b>+30</b>	<b>+277</b>	<b>+525</b>	<b>17.09%</b>	<b>2,090</b>
Nurse/ Midwife Manager	1,057	1,179	1,268	1,261	1,269	+89	+1	+8	+91	+213	7.70%	1,403
Nurse/ Midwife Specialist & AN/MP	176	290	378	397	399	+88	+22	+3	+110	+224	37.87%	444
Staff Nurse/ Staff Midwife	3,713	4,205	4,450	4,557	4,505	+245	+56	-52	+301	+792	7.15%	5,210
Public Health Nurse	216	216	209	216	215	-8	+6	-1	-2	-1	-0.77%	278
<i>Nursing/ Midwifery awaiting registration</i>	35	4	10	1	12	+6	+3	+11	+9	-22	238.12%	22
<i>Post-registration Nurse/ Midwife Student</i>	48	21	29	11	20	+8	-9	+9	-1	-28	-4.64%	25
<i>Pre-registration Nurse/ Midwife Intern</i>	39	43	15	114	104	-29	+89	-11	+61	+65	141.08%	202
Nursing/ Midwifery Student	122	68	53	126	136	-15	+83	+10	+68	+14	101.21%	249
Nursing/ Midwifery other	10	12	15	18	19	+3	+4	+1	+7	+9	55.15%	21
<b>Nursing &amp; Midwifery</b>	<b>5,293</b>	<b>5,969</b>	<b>6,372</b>	<b>6,575</b>	<b>6,544</b>	<b>+402</b>	<b>+172</b>	<b>-32</b>	<b>+574</b>	<b>+1,251</b>	<b>9.62%</b>	<b>7,605</b>
<i>Dietitians</i>	76	97	113	108	107	+17	-6	-0	+11	+31	10.97%	131
<i>Occupational Therapists</i>	201	287	318	302	306	+31	-12	+3	+18	+104	6.40%	348
<i>Orthoptists</i>	4	2	1	2	2	-1	+0	-1	-1	-3	-25.00%	2
<i>Physiotherapists</i>	229	297	317	316	318	+20	+0	+2	+21	+89	7.01%	376
<i>Podiatrists &amp; Chiropodists</i>	10	19	19	20	20	+1	+0	-0	+1	+10	6.23%	22
<i>Speech &amp; Language Therapists</i>	160	192	200	193	193	+8	-7	-0	+1	+33	0.49%	229
Therapy Professions	681	893	969	942	945	+76	-25	+3	+51	+264	5.75%	1,108
Health Science/ Diagnostics	598	683	684	689	685	+1	+1	-4	+1	+87	0.19%	798
Social Care	240	272	278	298	292	+6	+14	-5	+20	+52	7.35%	335
Pharmacy	102	151	163	159	160	+12	-3	+2	+9	+58	5.75%	191
Psychologists	139	162	167	154	157	+6	-11	+3	-5	+17	-3.05%	190
Social Workers	143	186	214	208	213	+28	-1	+5	+27	+69	14.57%	241
H&SC, Other	79	86	98	81	83	+12	-15	+2	-2	+4	-2.65%	114
<b>Health &amp; Social Care Professionals</b>	<b>1,983</b>	<b>2,434</b>	<b>2,574</b>	<b>2,530</b>	<b>2,535</b>	<b>+141</b>	<b>-39</b>	<b>+5</b>	<b>+101</b>	<b>+551</b>	<b>4.16%</b>	<b>2,977</b>
Management (VIII & above)	114	153	160	158	158	+8	-3	-0	+5	+44	3.24%	162
Administrative/ Supervisory (V to VII)	360	558	683	667	665	+126	-18	-2	+107	+305	19.28%	721
Clerical (III & IV)	1,388	1,541	1,609	1,625	1,599	+68	-10	-26	+58	+211	3.77%	1,845
<b>Management &amp; Administrative</b>	<b>1,862</b>	<b>2,251</b>	<b>2,452</b>	<b>2,450</b>	<b>2,422</b>	<b>+201</b>	<b>-31</b>	<b>-29</b>	<b>+171</b>	<b>+560</b>	<b>7.58%</b>	<b>2,728</b>
Support	1,244	1,440	1,391	1,435	1,413	-49	+22	-22	-27	+169	-1.86%	1,639
Maintenance/ Technical	35	35	34	37	38	-2	+4	+1	+3	+3	7.07%	41
<b>General Support</b>	<b>1,279</b>	<b>1,475</b>	<b>1,425</b>	<b>1,472</b>	<b>1,451</b>	<b>-50</b>	<b>+26</b>	<b>-21</b>	<b>-24</b>	<b>+172</b>	<b>-1.64%</b>	<b>1,680</b>
Health Care Assistants	2,453	2,740	2,786	2,890	2,847	+46	+61	-43	+107	+395	3.92%	3,323
Home Help	1,124	1,076	944	928	920	-132	-24	-9	-156	-204	-14.54%	1,435
Care, other	462	542	588	595	597	+46	+8	+2	+55	+134	10.05%	727
<b>Patient &amp; Client Care</b>	<b>4,039</b>	<b>4,358</b>	<b>4,319</b>	<b>4,413</b>	<b>4,364</b>	<b>-40</b>	<b>+45</b>	<b>-50</b>	<b>+5</b>	<b>+325</b>	<b>0.12%</b>	<b>5,485</b>



# WTE Change by Staff Category

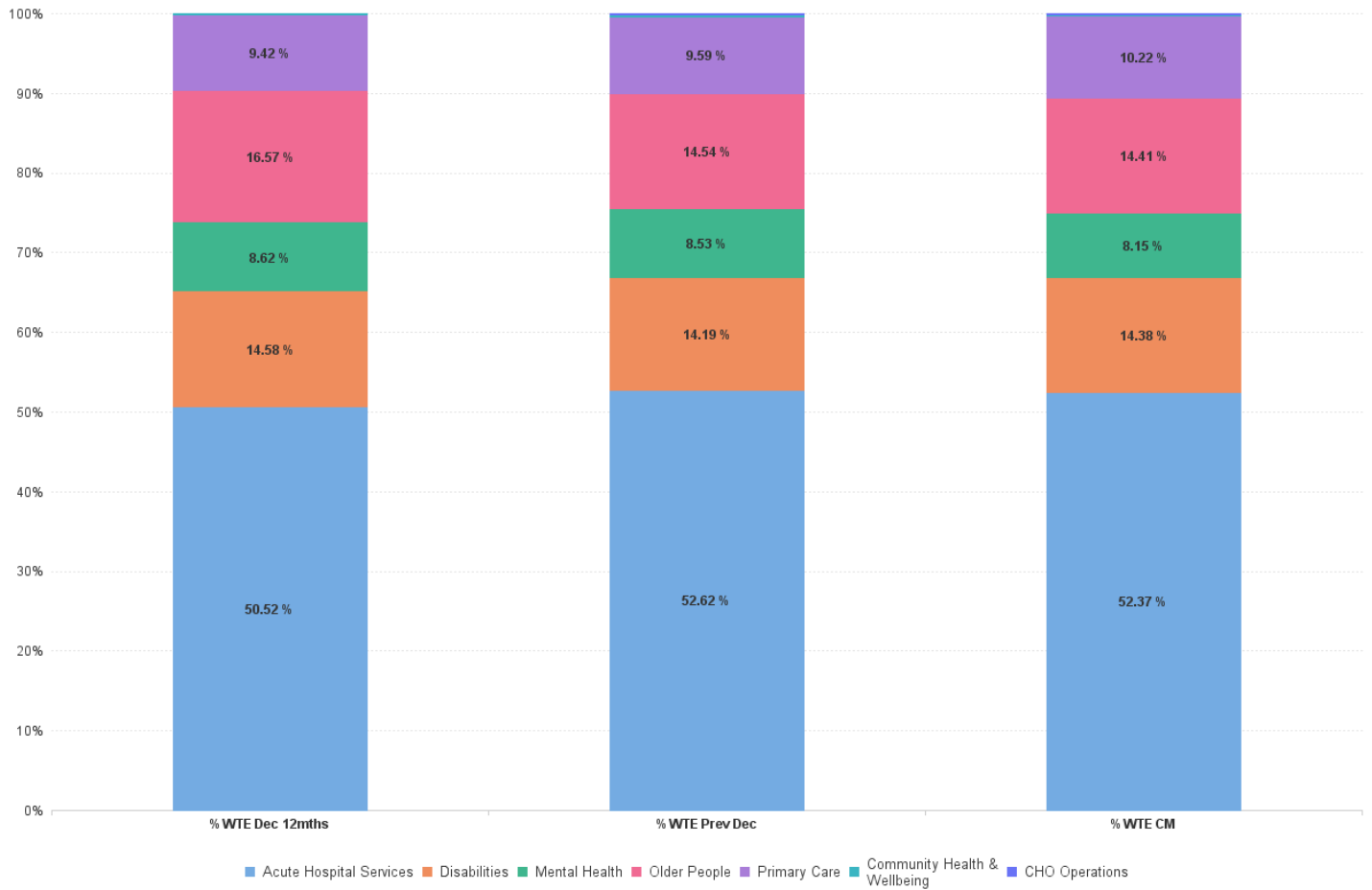
■ WTE change since DEC 2019 ■ WTE change since DEC 2022 ■ WTE change since DEC 2023 ■ WTE change since SEP 2023



## HSE South West by Care Group: SEP 2024

SEP 2024	WTE DEC 2019	WTE DEC 2022	WTE DEC 2023	WTE AUG 2024	WTE SEP 2024	WTE Change 2023	WTE Change 2024	WTE Change AUG 2024	WTE Change Dec 2022 to SEP 2024	WTE Change Dec 2019 to SEP 2024	% WTE Change Dec 2022 to SEP 2024	No. SEP 2024
<b>Overall</b>	<b>15,829</b>	<b>18,109</b>	<b>18,929</b>	<b>19,310</b>	<b>19,214</b>	<b>+819</b>	<b>+285</b>	<b>-96</b>	<b>+1,105</b>	<b>+3,385</b>	<b>6.10%</b>	<b>22,565</b>
Acute Hospital Services	7,641	9,149	9,961	10,108	10,063	+812	+102	-45	+914	+2,422	9.99%	11,307
Disabilities	2,425	2,640	2,686	2,780	2,762	+46	+76	-18	+122	+337	4.61%	3,293
Mental Health	1,499	1,562	1,615	1,563	1,566	+54	-49	+4	+5	+68	0.30%	1,756
Older People	2,919	3,000	2,752	2,791	2,769	-248	+17	-22	-231	-150	-7.71%	3,613
Primary Care	1,346	1,707	1,816	1,979	1,964	+109	+149	-15	+258	+619	15.10%	2,484
Community Health & Wellbeing		52	51	43	44	-0	-8	+0	-8	+44	-15.41%	63
CHO Operations			47	46	46	+47	-1	+0	+46	+46	-100.00%	49

### % Total by Care Group



# HSE South West Staff by Care Group: SEP 2024

## Acute Hospital Services

SEP 2024	WTE DEC 2019	WTE DEC 2022	WTE DEC 2023	WTE AUG 2024	WTE SEP 2024	WTE Change 2023	WTE Change 2024	WTE change since DEC 2023	WTE Change Dec 2022 to SEP 2024	WTE Change Dec 2019 to SEP 2024	% WTE Change Dec 2022 to SEP 2024	No. SEP 2024
<b>Total Acute Hospital Services</b>	<b>7,641</b>	<b>9,149</b>	<b>9,961</b>	<b>10,108</b>	<b>10,063</b>	<b>+812</b>	<b>+102</b>	<b>+102</b>	<b>+914</b>	<b>+2,422</b>	<b>9.99%</b>	<b>11,307</b>
Consultants	335	392	454	495	496	+62	+43	+43	+105	+161	26.78%	533
Registrars	353	440	476	511	519	+37	+43	+43	+80	+166	18.10%	532
SHO/ Interns	370	430	474	471	483	+43	+9	+9	+52	+112	12.16%	486
Medical/ Dental, other	7	9	7	6	6	-2	-1	-1	-3	-1	-30.67%	12
<b>Medical &amp; Dental</b>	<b>1,066</b>	<b>1,270</b>	<b>1,411</b>	<b>1,482</b>	<b>1,504</b>	<b>+141</b>	<b>+94</b>	<b>+94</b>	<b>+234</b>	<b>+438</b>	<b>18.43%</b>	<b>1,563</b>
Nurse/ Midwife Manager	624	689	771	745	755	+81	-15	-15	+66	+132	9.63%	844
Nurse/ Midwife Specialist & AN/MP	95	184	231	236	239	+47	+8	+8	+54	+144	29.60%	264
Staff Nurse/ Staff Midwife	2,268	2,673	2,962	3,025	2,984	+289	+22	+22	+311	+716	11.63%	3,390
Nursing/ Midwifery awaiting registration	3	4	4		11	+8	+274.7%	+7	+181.0%	+8	210.50%	21
Post-registration Nurse/ Midwife Student	29	10	9	10	10	-19	-65.5%	+1	+11.0%	+0	0.40%	10
Pre-registration Nurse/ Midwife Intern	30	36	13	82	72	+42	+139.5%	+59	+452.6%	+36	101.35%	138
Nursing/ Midwifery Student	62	49	26	92	93	-23	+67	+67	+44	+31	88.97%	169
Nursing/ Midwifery other	9	11	14	14	15	+3	+1	+1	+4	+6	33.33%	17
<b>Nursing &amp; Midwifery</b>	<b>3,058</b>	<b>3,606</b>	<b>4,003</b>	<b>4,113</b>	<b>4,086</b>	<b>+396</b>	<b>+83</b>	<b>+83</b>	<b>+479</b>	<b>+1,028</b>	<b>13.29%</b>	<b>4,684</b>
Dietitians	49	60	72	68	67	+18	+37.5%	-5	-6.6%	+6	10.78%	81
Occupational Therapists	32	60	79	72	71	+39	+121.0%	-8	-9.8%	+11	17.64%	79
Orthoptists	1	1	1	2	1	+0	+0.0%	+0	+33.3%	+0	0.00%	1
Physiotherapists	123	171	184	185	185	+62	+50.9%	+1	+0.7%	+14	8.23%	211
Podiatrists & Chiropodists	4	3	7	7	7	+3	+83.2%	+0	+1.5%	+4	119.47%	7
Speech & Language Therapists	25	48	49	46	47	+21	+83.8%	-2	-5.0%	-2	-3.15%	54
Therapy Professions	233	344	390	380	377	+47	-13	-13	+33	+144	9.68%	433
Health Science/ Diagnostics	586	669	671	677	672	+2	+2	+2	+3	+86	0.51%	783
Pharmacy	94	143	151	144	146	+8	-5	-5	+3	+51	1.93%	170
Psychologists	2	6	12	13	14	+6	+2	+2	+8	+12	135.13%	17
Social Workers	29	39	43	43	44	+4	+1	+1	+6	+16	14.24%	49
H&SC, Other	19	14	19	7	10	+5	-9	-9	-4	-9	-26.25%	13
<b>Health &amp; Social Care Professionals</b>	<b>963</b>	<b>1,214</b>	<b>1,286</b>	<b>1,264</b>	<b>1,264</b>	<b>+72</b>	<b>-22</b>	<b>-22</b>	<b>+49</b>	<b>+301</b>	<b>4.07%</b>	<b>1,465</b>
Management (VIII & above)	41	63	62	63	63	-0	+1	+1	+0	+22	0.67%	64
Administrative/ Supervisory (V to VII)	199	303	366	352	352	+62	-14	-14	+48	+153	15.92%	384
Clerical (III & IV)	883	969	987	973	958	+18	-29	-29	-11	+74	-1.13%	1,078
<b>Management &amp; Administrative</b>	<b>1,123</b>	<b>1,335</b>	<b>1,415</b>	<b>1,388</b>	<b>1,372</b>	<b>+80</b>	<b>-42</b>	<b>-42</b>	<b>+38</b>	<b>+249</b>	<b>2.83%</b>	<b>1,526</b>
Support	907	1,087	1,106	1,114	1,096	+19	-10	-10	+9	+189	0.81%	1,241
Maintenance/ Technical	13	13	15	17	18	+2	+3	+3	+5	+6	37.27%	19
<b>General Support</b>	<b>920</b>	<b>1,100</b>	<b>1,121</b>	<b>1,131</b>	<b>1,114</b>	<b>+21</b>	<b>-7</b>	<b>-7</b>	<b>+14</b>	<b>+194</b>	<b>1.26%</b>	<b>1,260</b>
Health Care Assistants	498	605	684	682	675	+79	-9	-9	+70	+177	11.54%	755
Care, other	13	18	42	48	47	+24	+6	+6	+29	+35	163.85%	54
<b>Patient &amp; Client Care</b>	<b>511</b>	<b>623</b>	<b>726</b>	<b>730</b>	<b>723</b>	<b>+102</b>	<b>-3</b>	<b>-3</b>	<b>+99</b>	<b>+212</b>	<b>15.94%</b>	<b>809</b>

# HSE South West Staff by Care Group: SEP 2024

## Disabilities

SEP 2024	WTE DEC 2019	WTE DEC 2022	WTE DEC 2023	WTE AUG 2024	WTE SEP 2024	WTE Change 2023	WTE Change 2024	WTE change since DEC 2023	WTE Change Dec 2022 to SEP 2024	WTE Change Dec 2019 to SEP 2024	% WTE Change Dec 2022 to SEP 2024	No. SEP 2024
<b>Total Disabilities</b>	<b>2,425</b>	<b>2,640</b>	<b>2,686</b>	<b>2,780</b>	<b>2,762</b>	<b>+46</b>	<b>+76</b>	<b>+76</b>	<b>+122</b>	<b>+337</b>	<b>4.61%</b>	<b>3,293</b>
Consultants	2	2	2	2	2	+0	-0	-0	-0	+0	-1.96%	2
Medical/ Dental, other	0	0	0	0	0	+0	+0	+0	+0	+0	0.00%	1
<b>Medical &amp; Dental</b>	<b>2</b>	<b>2</b>	<b>2</b>	<b>2</b>	<b>2</b>	<b>+0</b>	<b>-0</b>	<b>-0</b>	<b>-0</b>	<b>+0</b>	<b>-1.58%</b>	<b>3</b>
Nurse/ Midwife Manager	87	98	101	98	102	+3	+1	+1	+4	+15	4.49%	113
Nurse/ Midwife Specialist & AN/MP	13	13	12	10	10	-1	-2	-2	-3	-3	-19.37%	11
Staff Nurse/ Staff Midwife	306	301	299	296	298	-3	-1	-1	-3	-8	-1.11%	358
Nursing/ Midwifery awaiting registration	1					-1	-100.0%				-100.00%	
Pre-registration Nurse/ Midwife Intern	6	1	1	10	10	+4	+58.3%	+9	+850.0%	+9	1,276.81%	19
Nursing/ Midwifery Student	7	1	1	10	10	+0	+9	+9	+9	+3	1,276.81%	19
Nursing/ Midwifery other	1	1	1	1	1	+0	+0	+0	+0	+0	0.00%	1
<b>Nursing &amp; Midwifery</b>	<b>414</b>	<b>414</b>	<b>414</b>	<b>415</b>	<b>421</b>	<b>-0</b>	<b>+7</b>	<b>+7</b>	<b>+7</b>	<b>+7</b>	<b>1.78%</b>	<b>502</b>
Dietitians	3	2	3	3	3	+1	+20.0%	+0	+0.0%	+1	50.00%	3
Occupational Therapists	38	44	47	48	49	+11	+29.0%	+2	+4.2%	+5	12.31%	57
Physiotherapists	18	18	23	22	24	+6	+32.5%	+2	+7.3%	+7	38.95%	30
Speech & Language Therapists	49	42	46	46	45	-4	-9.0%	-2	-3.6%	+3	7.22%	54
Therapy Professions	108	105	119	119	121	+14	+2	+2	+16	+13	15.48%	144
Social Care	227	259	266	286	280	+8	+13	+13	+21	+53	8.10%	320
Psychologists	35	37	32	33	34	-5	+2	+2	-3	-1	-7.15%	38
Social Workers	27	28	35	32	33	+8	-2	-2	+5	+6	19.18%	39
H&SC, Other	8	7	10	9	9	+2	-1	-1	+1	+0	19.86%	10
<b>Health &amp; Social Care Professionals</b>	<b>405</b>	<b>435</b>	<b>462</b>	<b>479</b>	<b>476</b>	<b>+28</b>	<b>+14</b>	<b>+14</b>	<b>+41</b>	<b>+71</b>	<b>9.49%</b>	<b>551</b>
Management (VIII & above)	22	23	27	24	24	+4	-3	-3	+1	+2	5.94%	25
Administrative/ Supervisory (V to VII)	53	72	86	89	91	+14	+5	+5	+19	+38	26.31%	99
Clerical (III & IV)	84	93	90	101	97	-4	+7	+7	+3	+13	3.52%	120
<b>Management &amp; Administrative</b>	<b>160</b>	<b>189</b>	<b>203</b>	<b>213</b>	<b>212</b>	<b>+14</b>	<b>+10</b>	<b>+10</b>	<b>+24</b>	<b>+53</b>	<b>12.55%</b>	<b>244</b>
Support	140	138	83	80	79	-56	-4	-4	-60	-61	-43.06%	122
Maintenance/ Technical	10	10	11	11	11	+1	-1	-1	+1	+0	7.44%	13
<b>General Support</b>	<b>150</b>	<b>148</b>	<b>94</b>	<b>91</b>	<b>89</b>	<b>-54</b>	<b>-5</b>	<b>-5</b>	<b>-59</b>	<b>-61</b>	<b>-39.68%</b>	<b>135</b>
Health Care Assistants	987	1,111	1,147	1,212	1,184	+36	+38	+38	+74	+197	6.62%	1,420
Care, other	307	342	365	369	377	+23	+12	+12	+35	+69	10.16%	438
<b>Patient &amp; Client Care</b>	<b>1,295</b>	<b>1,453</b>	<b>1,512</b>	<b>1,580</b>	<b>1,561</b>	<b>+59</b>	<b>+49</b>	<b>+49</b>	<b>+108</b>	<b>+267</b>	<b>7.46%</b>	<b>1,858</b>

# HSE South West Staff by Care Group: SEP 2024

## Mental Health

SEP 2024	WTE DEC 2019	WTE DEC 2022	WTE DEC 2023	WTE AUG 2024	WTE SEP 2024	WTE Change 2023	WTE Change 2024	WTE change since DEC 2023	WTE Change Dec 2022 to SEP 2024	WTE Change Dec 2019 to SEP 2024	% WTE Change Dec 2022 to SEP 2024	No. SEP 2024
<b>Total Mental Health</b>	<b>1,499</b>	<b>1,562</b>	<b>1,615</b>	<b>1,563</b>	<b>1,566</b>	<b>+54</b>	<b>-49</b>	<b>-49</b>	<b>+5</b>	<b>+68</b>	<b>0.30%</b>	<b>1,756</b>
Consultants	50	60	65	68	70	+4	+5	+5	+10	+20	15.96%	80
Registrars	46	56	51	50	50	-5	-1	-1	-6	+4	-11.36%	51
SHO/ Interns	31	42	55	54	58	+12	+4	+4	+16	+27	37.76%	62
Medical/ Dental, other	2	1	1	1	1	+0	+0	+0	+0	-1	1.04%	4
<b>Medical &amp; Dental</b>	<b>129</b>	<b>160</b>	<b>171</b>	<b>172</b>	<b>179</b>	<b>+11</b>	<b>+8</b>	<b>+8</b>	<b>+19</b>	<b>+51</b>	<b>12.05%</b>	<b>197</b>
Nurse/ Midwife Manager	171	207	201	204	201	-6	+0	+0	-6	+29	-3.01%	214
Nurse/ Midwife Specialist & AN/MP	60	72	90	84	84	+17	-5	-5	+12	+24	16.66%	91
Staff Nurse/ Staff Midwife	505	479	484	449	446	+5	-38	-38	-33	-60	-6.97%	482
Nursing/ Midwifery awaiting registration	30		1	1		-30	-100.0%	-1	-100.0%		-100.00%	
Post-registration Nurse/ Midwife Student	1					-1	-100.0%				-100.00%	
Pre-registration Nurse/ Midwife Intern	3	7	1	23	22	+19	+649.0%	+22	+4,394.0%	+16	235.87%	45
Nursing/ Midwifery Student	34	7	2	24	22	-5	+21	+21	+16	-11	235.87%	45
Nursing/ Midwifery other				2	2		+2	+2	+2	+2	-100.00%	2
<b>Nursing &amp; Midwifery</b>	<b>770</b>	<b>765</b>	<b>776</b>	<b>762</b>	<b>755</b>	<b>+11</b>	<b>-21</b>	<b>-21</b>	<b>-10</b>	<b>-15</b>	<b>-1.29%</b>	<b>834</b>
Dietitians	6	3	2	2	1	-5	-75.5%	-0	-23.3%	-2	-56.60%	2
Occupational Therapists	55	63	73	67	67	+12	+22.5%	-5	-7.2%	+5	7.49%	77
Speech & Language Therapists	13	13	13	13	13	+0	+0.5%	-0	-3.1%	+0	1.18%	16
Therapy Professions	74	79	88	81	82	+9	-6	-6	+3	+8	3.69%	95
Social Care	4	6	3	3	4	-3	+1	+1	-2	+0	-31.39%	5
Pharmacy	2	2	1	1	1	-1	-1	-1	-2	-2	-74.58%	1
Psychologists	83	96	98	90	92	+2	-6	-6	-4	+9	-4.01%	115
Social Workers	53	73	74	67	69	+1	-5	-5	-4	+16	-5.00%	81
H&SC, Other	11	18	19	18	18	+1	-1	-1	-0	+7	-0.46%	22
<b>Health &amp; Social Care Professionals</b>	<b>227</b>	<b>273</b>	<b>283</b>	<b>260</b>	<b>265</b>	<b>+9</b>	<b>-17</b>	<b>-17</b>	<b>-8</b>	<b>+38</b>	<b>-3.02%</b>	<b>319</b>
Management (VIII & above)	1	3	3	3	2	-0	-1	-1	-1	+1	-40.00%	2
Administrative/ Supervisory (V to VII)	22	26	33	30	30	+7	-3	-3	+4	+8	15.07%	32
Clerical (III & IV)	87	87	106	107	105	+19	-1	-1	+18	+17	20.72%	119
<b>Management &amp; Administrative</b>	<b>111</b>	<b>116</b>	<b>142</b>	<b>140</b>	<b>137</b>	<b>+26</b>	<b>-5</b>	<b>-5</b>	<b>+21</b>	<b>+26</b>	<b>17.87%</b>	<b>153</b>
Support	81	75	65	59	59	-10	-6	-6	-16	-22	-21.51%	66
Maintenance/ Technical	6	5	4	4	4	-1	+0	+0	-1	-2	-24.65%	4
<b>General Support</b>	<b>87</b>	<b>80</b>	<b>68</b>	<b>63</b>	<b>62</b>	<b>-11</b>	<b>-6</b>	<b>-6</b>	<b>-17</b>	<b>-24</b>	<b>-21.71%</b>	<b>70</b>
Health Care Assistants	168	162	169	160	162	+7	-8	-8	-0	-7	-0.25%	171
Care, other	7	5	6	5	6	+0	+0	+0	+0	-2	8.24%	12
<b>Patient &amp; Client Care</b>	<b>176</b>	<b>167</b>	<b>175</b>	<b>165</b>	<b>167</b>	<b>+8</b>	<b>-8</b>	<b>-8</b>	<b>+0</b>	<b>-8</b>	<b>0.01%</b>	<b>183</b>

# HSE South West Staff by Care Group: SEP 2024

## Older People

SEP 2024	WTE DEC 2019	WTE DEC 2022	WTE DEC 2023	WTE AUG 2024	WTE SEP 2024	WTE Change 2023	WTE Change 2024	WTE change since DEC 2023	WTE Change Dec 2022 to SEP 2024	WTE Change Dec 2019 to SEP 2024	% WTE Change Dec 2022 to SEP 2024	No. SEP 2024
<b>Total Older People</b>	<b>2,919</b>	<b>3,000</b>	<b>2,752</b>	<b>2,791</b>	<b>2,769</b>	<b>-248</b>	<b>+17</b>	<b>+17</b>	<b>-231</b>	<b>-150</b>	<b>-7.71%</b>	<b>3,613</b>
Consultants	1	1	1	1	1	+0	+0	+0	+0	+0	0.00%	2
Registrars	3	0				-0			-0	-3	-100.00%	
SHO/ Interns	1			1	1		+1	+1	+1	+0	-100.00%	1
Medical/ Dental, other	21	27	25	26	26	-2	+2	+2	-0	+6	-1.24%	55
<b>Medical &amp; Dental</b>	<b>26</b>	<b>28</b>	<b>26</b>	<b>28</b>	<b>28</b>	<b>-2</b>	<b>+3</b>	<b>+3</b>	<b>+1</b>	<b>+3</b>	<b>2.27%</b>	<b>58</b>
Nurse/ Midwife Manager	118	109	119	128	124	+10	+5	+5	+15	+6	13.50%	134
Nurse/ Midwife Specialist & AN/MP	3	6	11	10	10	+6	-1	-1	+4	+7	73.99%	11
Staff Nurse/ Staff Midwife	515	575	513	540	541	-62	+27	+27	-35	+25	-6.04%	651
Public Health Nurse	5	6	5	4	4	-2	-0	-0	-2	-1	-32.97%	5
Nursing/ Midwifery Student	2		5		1	+5	-4	-4	+1	-1	-100.00%	1
<b>Nursing &amp; Midwifery</b>	<b>643</b>	<b>697</b>	<b>653</b>	<b>683</b>	<b>680</b>	<b>-44</b>	<b>+27</b>	<b>+27</b>	<b>-17</b>	<b>+37</b>	<b>-2.41%</b>	<b>802</b>
Dietitians	2		2	2	2	+1	+33.3%	+1	+33.3%	+2	-100.00%	2
Occupational Therapists	17	13	10	11	12	-5	-31.4%	+2	+21.0%	-1	-7.95%	13
Physiotherapists	15	16	13	10	9	-6	-38.6%	-3	-27.3%	-6	-41.34%	11
Podiatrists & Chiroprodists	6	2	1	1	1	-6	-85.1%	-1	-34.0%	-1	-36.18%	1
Speech & Language Therapists	4	6	4	4	3	-0	-9.7%	-1	-17.6%	-3	-46.52%	4
Therapy Professions	44	37	30	28	27	-7	-2	-2	-9	-17	-24.84%	31
Health Science/ Diagnostics	1	1	1	1	1	+0	+0	+0	+0	+0	0.00%	2
Social Care	2	1	1	1	1	+0	+0	+0	+0	-0	0.79%	2
Pharmacy	3	5	4	4	4	-0	-0	-0	-0	+2	-7.30%	9
Social Workers	10	9				-9			-9	-10	-100.00%	
H&SC, Other			5	5	4	+5	-1	-1	+4	+4	-100.00%	5
<b>Health &amp; Social Care Professionals</b>	<b>60</b>	<b>53</b>	<b>41</b>	<b>39</b>	<b>38</b>	<b>-12</b>	<b>-3</b>	<b>-3</b>	<b>-15</b>	<b>-22</b>	<b>-27.73%</b>	<b>49</b>
Management (VIII & above)	13	19	20	17	16	+1	-3	-3	-3	+4	-14.42%	17
Administrative/ Supervisory (V to VII)	17	29	39	47	47	+9	+8	+8	+17	+30	58.37%	49
Clerical (III & IV)	128	130	128	129	127	-2	-1	-1	-3	-1	-1.95%	150
<b>Management &amp; Administrative</b>	<b>158</b>	<b>178</b>	<b>186</b>	<b>193</b>	<b>190</b>	<b>+8</b>	<b>+4</b>	<b>+4</b>	<b>+12</b>	<b>+32</b>	<b>6.65%</b>	<b>216</b>
Support	101	124	120	115	116	-3	-5	-5	-8	+15	-6.65%	130
Maintenance/ Technical	6	5	3	3	3	-2	+0	+0	-2	-3	-40.00%	3
<b>General Support</b>	<b>107</b>	<b>129</b>	<b>123</b>	<b>118</b>	<b>119</b>	<b>-5</b>	<b>-5</b>	<b>-5</b>	<b>-10</b>	<b>+12</b>	<b>-7.94%</b>	<b>133</b>
Health Care Assistants	781	814	753	776	768	-61	+14	+14	-47	-14	-5.76%	895
Home Help	1,113	1,068	932	917	909	-136	-23	-23	-159	-205	-14.87%	1,412
Care, other	31	34	37	37	37	+3	+1	+1	+4	+7	10.60%	48
<b>Patient &amp; Client Care</b>	<b>1,925</b>	<b>1,916</b>	<b>1,722</b>	<b>1,730</b>	<b>1,714</b>	<b>-194</b>	<b>-9</b>	<b>-9</b>	<b>-202</b>	<b>-212</b>	<b>-10.55%</b>	<b>2,355</b>

# HSE South West Staff by Care Group: SEP 2024

## Primary Care

SEP 2024	WTE DEC 2019	WTE DEC 2022	WTE DEC 2023	WTE AUG 2024	WTE SEP 2024	WTE Change 2023	WTE Change 2024	WTE change since DEC 2023	WTE Change Dec 2022 to SEP 2024	WTE Change Dec 2019 to SEP 2024	% WTE Change Dec 2022 to SEP 2024	No. SEP 2024
<b>Total Primary Care</b>	<b>1,346</b>	<b>1,707</b>	<b>1,816</b>	<b>1,979</b>	<b>1,964</b>	<b>+109</b>	<b>+149</b>	<b>+149</b>	<b>+258</b>	<b>+619</b>	<b>15.10%</b>	<b>2,484</b>
Consultants	3	7	8	10	10	+1	+3	+3	+3	+8	50.74%	15
Registrars	55	40	60	76	75	+20	+15	+15	+35	+20	89.59%	79
SHO/ Interns	6	4	3	5	5	-1	+2	+2	+1	-1	25.00%	5
Medical/ Dental, other	88	110	106	93	95	-4	-12	-12	-15	+7	-13.80%	170
<b>Medical &amp; Dental</b>	<b>152</b>	<b>160</b>	<b>177</b>	<b>185</b>	<b>185</b>	<b>+17</b>	<b>+8</b>	<b>+8</b>	<b>+25</b>	<b>+34</b>	<b>15.41%</b>	<b>269</b>
Nurse/ Midwife Manager	56	72	70	80	81	-3	+11	+11	+9	+25	12.20%	91
Nurse/ Midwife Specialist & AN/MP	4	14	33	55	55	+18	+22	+22	+40	+51	279.20%	66
Staff Nurse/ Staff Midwife	119	177	192	248	238	+16	+46	+46	+61	+118	34.66%	329
Public Health Nurse	211	210	204	212	210	-6	+6	+6	+0	-0	0.22%	273
Post-registration Nurse/ Midwife Student	17	11	20	1	10	-7	-42.4%	-10	-50.3%	-1	-9.22%	15
Nursing/ Midwifery Student	17	11	20	1	10	+9	-10	-10	-1	-7	-9.22%	15
Nursing/ Midwifery other				1	1		+1	+1	+1	+1	-100.00%	1
<b>Nursing &amp; Midwifery</b>	<b>408</b>	<b>484</b>	<b>518</b>	<b>596</b>	<b>595</b>	<b>+34</b>	<b>+76</b>	<b>+76</b>	<b>+111</b>	<b>+187</b>	<b>22.89%</b>	<b>775</b>
Dietitians	18	28	34	32	32	+15	+81.9%	-2	-4.4%	+4	13.37%	41
Occupational Therapists	59	108	110	104	106	+47	+79.9%	-3	-3.1%	-1	-1.22%	122
Orthoptists	3	1	1	1	1	-3	-84.8%	+0	+0.0%	-1	-50.00%	1
Physiotherapists	73	93	98	99	99	+26	+35.8%	+1	+0.9%	+6	6.91%	124
Podiatrists & Chiropodists		14	11	13	12	+12		+1	+6.4%	-2	-13.58%	14
Speech & Language Therapists	69	83	87	84	85	+17	+24.2%	-2	-2.2%	+2	2.79%	101
Therapy Professions	222	327	341	333	336	+14	-5	-5	+9	+114	2.69%	403
Health Science/ Diagnostics	11	13	12	11	11	-1	-1	-1	-2	+0	-15.87%	13
Social Care	8	7	7	7	7	+1	+0	+0	+1	-0	13.68%	8
Pharmacy	3	2	5	8	8	+3	+3	+3	+6	+5	349.13%	9
Psychologists	20	23	26	18	17	+3	-9	-9	-7	-4	-27.91%	20
Social Workers	24	37	44	48	48	+7	+5	+5	+12	+24	32.37%	53
H&SC, Other	41	39	41	42	42	+2	+1	+1	+3	+1	8.85%	51
<b>Health &amp; Social Care Professionals</b>	<b>329</b>	<b>447</b>	<b>475</b>	<b>467</b>	<b>470</b>	<b>+28</b>	<b>-6</b>	<b>-6</b>	<b>+22</b>	<b>+141</b>	<b>5.01%</b>	<b>557</b>
Management (VIII & above)	37	44	44	46	47	-0	+3	+3	+3	+10	7.12%	49
Administrative/ Supervisory (V to VII)	68	114	133	122	120	+19	-13	-13	+6	+52	5.43%	130
Clerical (III & IV)	205	255	284	303	299	+29	+15	+15	+44	+94	17.35%	364
<b>Management &amp; Administrative</b>	<b>310</b>	<b>412</b>	<b>461</b>	<b>470</b>	<b>466</b>	<b>+48</b>	<b>+5</b>	<b>+5</b>	<b>+54</b>	<b>+156</b>	<b>12.97%</b>	<b>543</b>
Support	16	16	18	66	65	+1	+47	+47	+48	+49	294.09%	80
Maintenance/ Technical		1		2	2	-1	+2	+2	+1	+2	100.00%	2
<b>General Support</b>	<b>16</b>	<b>17</b>	<b>18</b>	<b>68</b>	<b>67</b>	<b>+0</b>	<b>+49</b>	<b>+49</b>	<b>+49</b>	<b>+51</b>	<b>282.95%</b>	<b>82</b>
Health Care Assistants	17	47	33	61	58	-14	+26	+26	+11	+41	24.25%	82
Home Help	10	8	12	11	11	+3	-1	-1	+2	+1	28.50%	23
Care, other	105	130	122	121	113	-8	-9	-9	-17	+9	-12.87%	153
<b>Patient &amp; Client Care</b>	<b>132</b>	<b>185</b>	<b>166</b>	<b>193</b>	<b>182</b>	<b>-19</b>	<b>+16</b>	<b>+16</b>	<b>-3</b>	<b>+50</b>	<b>-1.60%</b>	<b>258</b>



## HSE South West Staff by Care Group: SEP 2024

### Community Health & Wellbeing

SEP 2024	WTE DEC 2019	WTE DEC 2022	WTE DEC 2023	WTE AUG 2024	WTE SEP 2024	WTE Change 2023	WTE Change 2024	WTE change since DEC 2023	WTE Change Dec 2022 to SEP 2024	WTE Change Dec 2019 to SEP 2024	% WTE Change Dec 2022 to SEP 2024	No. SEP 2024
<b>Total Community Health &amp; Wellbeing</b>		<b>52</b>	<b>51</b>	<b>43</b>	<b>44</b>	<b>-0</b>	<b>-8</b>	<b>-8</b>	<b>-8</b>	<b>+44</b>	<b>-15.41%</b>	<b>63</b>
Medical/ Dental, other		2				-2			-2		-100.00%	
<b>Medical &amp; Dental</b>		<b>2</b>				<b>-2</b>			<b>-2</b>		<b>-100.00%</b>	
Nurse/ Midwife Manager		3	3	2	2	-0	-1	-1	-1	+2	-40.83%	2
<b>Nursing &amp; Midwifery</b>		<b>3</b>	<b>3</b>	<b>2</b>	<b>2</b>	<b>-0</b>	<b>-1</b>	<b>-1</b>	<b>-1</b>	<b>+2</b>	<b>-40.83%</b>	<b>2</b>
Therapy Professions		2	2	2	2	-1	+0	+0	-1	+2	-32.49%	2
H&SC, Other		9	5	1	1	-3	-4	-4	-8	+1	-88.71%	13
<b>Health &amp; Social Care Professionals</b>		<b>11</b>	<b>7</b>	<b>3</b>	<b>3</b>	<b>-4</b>	<b>-4</b>	<b>-4</b>	<b>-8</b>	<b>+3</b>	<b>-76.55%</b>	<b>15</b>
Management (VIII & above)		1	2	2	2	+1	+0	+0	+1	+2	100.00%	2
Administrative/ Supervisory (V to VII)		12	14	15	14	+2	-0	-0	+2	+14	12.14%	15
Clerical (III & IV)		7	8	7	7	+1	-1	-1	-1	+7	-11.32%	7
<b>Management &amp; Administrative</b>		<b>21</b>	<b>24</b>	<b>23</b>	<b>22</b>	<b>+3</b>	<b>-1</b>	<b>-1</b>	<b>+2</b>	<b>+22</b>	<b>8.09%</b>	<b>24</b>
Maintenance/ Technical		1				-1			-1		-100.00%	
<b>General Support</b>		<b>1</b>				<b>-1</b>			<b>-1</b>		<b>-100.00%</b>	
Health Care Assistants		0				-0			-0		-100.00%	
Care, other		14	17	15	17	+4	-1	-1	+3	+17	22.38%	22
<b>Patient &amp; Client Care</b>		<b>14</b>	<b>17</b>	<b>15</b>	<b>17</b>	<b>+4</b>	<b>-1</b>	<b>-1</b>	<b>+3</b>	<b>+17</b>	<b>20.16%</b>	<b>22</b>

## HSE South West Staff by Care Group: SEP 2024

### CHO Operations

SEP 2024	WTE DEC 2019	WTE DEC 2022	WTE DEC 2023	WTE AUG 2024	WTE SEP 2024	WTE Change 2023	WTE Change 2024	WTE change since DEC 2023	WTE Change Dec 2022 to SEP 2024	WTE Change Dec 2019 to SEP 2024	% WTE Change Dec 2022 to SEP 2024	No. SEP 2024
<b>Total CHO Operations</b>			47	46	46	+47	-1	-1	+46	+46	-100.00%	49
Nurse/ Midwife Manager			4	4	4	+4	-0	-0	+4	+4	-100.00%	5
Nurse/ Midwife Specialist & AN/MP			1	1	1	+1	+0	+0	+1	+1	-100.00%	1
<b>Nursing &amp; Midwifery</b>			5	5	5	+5	-0	-0	+5	+5	-100.00%	6
Pharmacy			2	2	2	+2	+0	+0	+2	+2	-100.00%	2
Social Workers			18	18	17	+18	-1	-1	+17	+17	-100.00%	19
<b>Health &amp; Social Care Professionals</b>			20	20	19	+20	-1	-1	+19	+19	-100.00%	21
Management (VIII & above)			3	3	3	+3	+0	+0	+3	+3	-100.00%	3
Administrative/ Supervisory (V to VII)			13	12	11	+13	-2	-2	+11	+11	-100.00%	12
Clerical (III & IV)			6	7	7	+6	+1	+1	+7	+7	-100.00%	7
<b>Management &amp; Administrative</b>			22	21	21	+22	-1	-0	+21	+21	-100.00%	22

## HSE South West Report by HSE/S38: SEP 2024

SEP 2024	WTE DEC 2019	WTE DEC 2022	WTE DEC 2023	WTE AUG 2024	WTE SEP 2024	WTE Change 2023	WTE Change 2024	WTE change since DEC 2023	WTE Change Dec 2022 to SEP 2024	WTE Change Dec 2019 to SEP 2024	% WTE Change Dec 2022 to SEP 2024	No. SEP 2024
<b>Overall</b>	<b>15,829</b>	<b>18,109</b>	<b>18,929</b>	<b>19,310</b>	<b>19,214</b>	<b>+819</b>	<b>+285</b>	<b>+285</b>	<b>+1,105</b>	<b>+3,385</b>	<b>6.10%</b>	<b>22,565</b>
Health Service Executive	11,621	13,401	14,013	13,953	13,881	+611	-132	-132	+479	+2,260	3.58%	16,239
Section 38 Hospitals	1,959	2,279	2,440	2,463	2,467	+161	+27	+27	+188	+508	8.26%	2,800
Section 38 Voluntary Agencies	2,249	2,429	2,476	2,894	2,866	+47	+390	+390	+437	+617	17.99%	3,526



## HSE South West : SEP 2024

### Health Service Executive

SEP 2024	WTE DEC 2019	WTE DEC 2022	WTE DEC 2023	WTE AUG 2024	WTE SEP 2024	WTE Change 2023	WTE Change 2024	WTE change since DEC 2023	WTE Change Dec 2022 to SEP 2024	WTE Change Dec 2019 to SEP 2024	% WTE Change Dec 2022 to SEP 2024	No. SEP 2024
<b>Total Health Service Executive</b>	<b>11,621</b>	<b>13,401</b>	<b>14,013</b>	<b>13,953</b>	<b>13,881</b>	<b>+611</b>	<b>-132</b>	<b>-132</b>	<b>+479</b>	<b>+2,260</b>	<b>3.58%</b>	<b>16,239</b>
Consultants	313	366	428	465	470	+62	+41	+41	+103	+157	28.26%	513
Registrars	378	452	489	534	541	+36	+52	+52	+89	+163	19.58%	557
SHO/ Interns	304	355	416	415	432	+61	+17	+17	+77	+128	21.78%	439
Medical/ Dental, other	106	129	121	114	114	-7	-8	-8	-15	+8	-11.66%	194
<b>Medical &amp; Dental</b>	<b>1,101</b>	<b>1,302</b>	<b>1,454</b>	<b>1,527</b>	<b>1,556</b>	<b>+152</b>	<b>+102</b>	<b>+102</b>	<b>+254</b>	<b>+455</b>	<b>19.53%</b>	<b>1,703</b>
Nurse/ Midwife Manager	787	885	969	948	953	+83	-15	-15	+68	+166	7.68%	1,044
Nurse/ Midwife Specialist & AN/MP	142	237	315	315	313	+78	-2	-2	+76	+171	32.11%	349
Staff Nurse/ Staff Midwife	2,925	3,341	3,531	3,569	3,513	+190	-18	-18	+172	+588	5.15%	4,039
Public Health Nurse	216	216	209	216	215	-8	+6	+6	-2	-1	-0.77%	278
<i>Nursing/ Midwifery awaiting registration</i>	33	2	8	1	3	+6	-5	-5	+1	-30	81.48%	3
<i>Post-registration Nurse/ Midwife Student</i>	48	21	29	11	20	+8	-9	-9	-1	-28	-4.64%	25
<i>Pre-registration Nurse/ Midwife Intern</i>	33	43	13	89	88	-30	+75	+75	+45	+55	105.09%	177
Nursing/ Midwifery Student	114	66	50	101	111	-16	+62	+62	+46	-3	69.53%	205
Nursing/ Midwifery other	4	5	7	9	10	+2	+3	+3	+5	+6	105.86%	11
<b>Nursing &amp; Midwifery</b>	<b>4,188</b>	<b>4,750</b>	<b>5,080</b>	<b>5,158</b>	<b>5,115</b>	<b>+330</b>	<b>+35</b>	<b>+35</b>	<b>+365</b>	<b>+927</b>	<b>7.68%</b>	<b>5,926</b>
<i>Dietitians</i>	62	80	95	88	88	+15	-7	-7	+8	+26	10.46%	107
<i>Occupational Therapists</i>	159	230	255	237	239	+25	-16	-16	+8	+80	3.67%	272
<i>Orthoptists</i>	4	2	1	1	1	-1	-1	-1	-2	-4	-75.00%	1
<i>Physiotherapists</i>	173	232	243	236	235	+11	-8	-8	+3	+62	1.45%	279
<i>Podiatrists &amp; Chiropodists</i>	9	18	18	18	18	+0	+0	+0	+1	+9	3.07%	20
<i>Speech &amp; Language Therapists</i>	111	148	149	138	138	+1	-11	-11	-10	+27	-6.74%	162
Therapy Professions	519	709	761	719	719	+52	-42	-42	+9	+200	1.30%	841
Health Science/ Diagnostics	486	550	557	557	549	+7	-8	-8	-1	+62	-0.12%	624
Social Care	39	44	37	38	38	-7	+1	+1	-6	-1	-13.85%	42
Pharmacy	70	108	117	111	111	+8	-5	-5	+3	+41	2.65%	133
Psychologists	107	127	134	119	121	+8	-13	-13	-6	+14	-4.44%	150
Social Workers	105	148	166	155	158	+18	-8	-8	+11	+53	7.21%	179
H&SC, Other	71	78	93	77	80	+15	-13	-13	+2	+9	2.44%	108
<b>Health &amp; Social Care Professionals</b>	<b>1,397</b>	<b>1,764</b>	<b>1,865</b>	<b>1,775</b>	<b>1,776</b>	<b>+101</b>	<b>-89</b>	<b>-89</b>	<b>+12</b>	<b>+378</b>	<b>0.69%</b>	<b>2,077</b>
Management (VIII & above)	84	116	118	112	111	+3	-8	-8	-5	+27	-4.51%	114
Administrative/ Supervisory (V to VII)	242	396	505	482	478	+109	-28	-28	+81	+236	20.49%	516
Clerical (III & IV)	989	1,112	1,154	1,116	1,102	+42	-52	-52	-10	+113	-0.90%	1,264
<b>Management &amp; Administrative</b>	<b>1,315</b>	<b>1,624</b>	<b>1,778</b>	<b>1,709</b>	<b>1,690</b>	<b>+153</b>	<b>-87</b>	<b>-87</b>	<b>+66</b>	<b>+376</b>	<b>4.06%</b>	<b>1,894</b>
Support	954	1,120	1,122	1,123	1,104	+2	-18	-18	-17	+150	-1.48%	1,239
Maintenance/ Technical	16	16	11	11	11	-4	+0	+0	-4	-5	-27.22%	12
<b>General Support</b>	<b>970</b>	<b>1,136</b>	<b>1,133</b>	<b>1,134</b>	<b>1,115</b>	<b>-3</b>	<b>-18</b>	<b>-18</b>	<b>-21</b>	<b>+145</b>	<b>-1.83%</b>	<b>1,251</b>
Health Care Assistants	1,403	1,583	1,580	1,544	1,531	-3	-49	-49	-52	+128	-3.30%	1,723
Home Help	1,124	1,076	944	928	920	-132	-24	-24	-156	-204	-14.54%	1,435
Care, other	123	166	180	176	177	+13	-2	-2	+11	+54	6.77%	230
<b>Patient &amp; Client Care</b>	<b>2,650</b>	<b>2,825</b>	<b>2,703</b>	<b>2,649</b>	<b>2,628</b>	<b>-122</b>	<b>-75</b>	<b>-75</b>	<b>-197</b>	<b>-22</b>	<b>-6.98%</b>	<b>3,388</b>



Section 38 Hospitals

SEP 2024	WTE DEC 2019	WTE DEC 2022	WTE DEC 2023	WTE AUG 2024	WTE SEP 2024	WTE Change 2023	WTE Change 2024	WTE change since DEC 2023	WTE Change Dec 2022 to SEP 2024	WTE Change Dec 2019 to SEP 2024	% WTE Change Dec 2022 to SEP 2024	No. SEP 2024
<b>Total Section 38 Hospitals</b>	<b>1,959</b>	<b>2,279</b>	<b>2,440</b>	<b>2,463</b>	<b>2,467</b>	<b>+161</b>	<b>+27</b>	<b>+27</b>	<b>+188</b>	<b>+508</b>	<b>8.26%</b>	<b>2,800</b>
Consultants	77	91	96	104	103	+6	+6	+6	+12	+26	13.10%	111
Registrars	73	80	96	94	94	+16	-2	-2	+14	+21	17.40%	95
SHO/ Interns	98	118	113	110	110	-5	-3	-3	-8	+12	-6.74%	110
<b>Medical &amp; Dental</b>	<b>249</b>	<b>289</b>	<b>305</b>	<b>309</b>	<b>307</b>	<b>+16</b>	<b>+2</b>	<b>+2</b>	<b>+18</b>	<b>+59</b>	<b>6.20%</b>	<b>316</b>
Nurse/ Midwife Manager	195	209	211	205	205	+3	-6	-6	-4	+10	-1.71%	237
Nurse/ Midwife Specialist & AN/MP	21	40	50	47	52	+11	+2	+2	+13	+32	31.88%	56
Staff Nurse/ Staff Midwife	504	593	656	650	651	+63	-6	-6	+58	+147	9.76%	739
Nursing/ Midwifery Student	2	2	3	16	15	+1	+13	+13	+13	+13	665.00%	25
Nursing/ Midwifery other	6	6	7	7	7	+1	+0	+0	+1	+1	10.24%	8
<b>Nursing &amp; Midwifery</b>	<b>727</b>	<b>850</b>	<b>927</b>	<b>926</b>	<b>931</b>	<b>+78</b>	<b>+3</b>	<b>+3</b>	<b>+81</b>	<b>+203</b>	<b>9.52%</b>	<b>1,065</b>
Therapy Professions	73	93	101	101	102	+7	+2	+2	+9	+29	9.57%	123
Health Science/ Diagnostics	110	132	125	131	135	-7	+10	+10	+3	+25	2.19%	172
Pharmacy	32	43	47	44	46	+4	-1	-1	+3	+13	5.89%	54
Psychologists	2	2	2	3	3	+0	+1	+1	+1	+1	40.00%	3
Social Workers	11	10	13	14	14	+3	+1	+1	+4	+3	35.47%	15
H&SC, Other	4	3	2	1	1	-1	-1	-1	-2	-3	-66.67%	1
<b>Health &amp; Social Care Professionals</b>	<b>232</b>	<b>284</b>	<b>289</b>	<b>295</b>	<b>301</b>	<b>+6</b>	<b>+11</b>	<b>+11</b>	<b>+17</b>	<b>+68</b>	<b>5.95%</b>	<b>368</b>
Management (VIII & above)	15	20	23	24	24	+3	+1	+1	+4	+9	20.00%	24
Administrative/ Supervisory (V to VII)	81	111	117	115	115	+6	-3	-3	+4	+34	3.46%	128
Clerical (III & IV)	309	335	365	379	376	+29	+11	+11	+40	+66	11.95%	418
<b>Management &amp; Administrative</b>	<b>405</b>	<b>466</b>	<b>505</b>	<b>518</b>	<b>514</b>	<b>+39</b>	<b>+9</b>	<b>+9</b>	<b>+48</b>	<b>+109</b>	<b>10.28%</b>	<b>570</b>
Support	160	189	190	186	187	+2	-3	-3	-1	+27	-0.73%	227
Maintenance/ Technical	10	11	12	14	15	+1	+3	+3	+4	+5	36.36%	15
<b>General Support</b>	<b>170</b>	<b>200</b>	<b>202</b>	<b>200</b>	<b>202</b>	<b>+3</b>	<b>+0</b>	<b>+0</b>	<b>+3</b>	<b>+32</b>	<b>1.32%</b>	<b>242</b>
Health Care Assistants	174	188	196	199	198	+9	+2	+2	+11	+25	5.78%	223
Care, other	3	3	15	15	14	+11	-0	-0	+11	+12	348.60%	16
<b>Patient &amp; Client Care</b>	<b>177</b>	<b>191</b>	<b>211</b>	<b>215</b>	<b>213</b>	<b>+20</b>	<b>+2</b>	<b>+2</b>	<b>+22</b>	<b>+36</b>	<b>11.54%</b>	<b>239</b>



Section 38 Voluntary Agencies

SEP 2024	WTE DEC 2019	WTE DEC 2022	WTE DEC 2023	WTE AUG 2024	WTE SEP 2024	WTE Change 2023	WTE Change 2024	WTE change since DEC 2023	WTE Change Dec 2022 to SEP 2024	WTE Change Dec 2019 to SEP 2024	% WTE Change Dec 2022 to SEP 2024	No. SEP 2024
<b>Total Section 38 Voluntary Agencies</b>	<b>2,249</b>	<b>2,429</b>	<b>2,476</b>	<b>2,894</b>	<b>2,866</b>	<b>+47</b>	<b>+390</b>	<b>+390</b>	<b>+437</b>	<b>+617</b>	<b>17.99%</b>	<b>3,526</b>
Consultants		4	4	7	7	+0	+3	+3	+3	+7	60.53%	8
Registrars	5	3	3	9	9	-0	+7	+7	+6	+4	203.33%	10
SHO/ Interns	6	4	3	5	5	-1	+2	+2	+1	-1	25.00%	5
Medical/ Dental, other	13	20	18	12	15	-2	-3	-3	-5	+2	-24.33%	48
<b>Medical &amp; Dental</b>	<b>24</b>	<b>31</b>	<b>28</b>	<b>33</b>	<b>36</b>	<b>-3</b>	<b>+8</b>	<b>+8</b>	<b>+5</b>	<b>+11</b>	<b>15.82%</b>	<b>71</b>
Nurse/ Midwife Manager	75	85	88	107	111	+3	+23	+23	+26	+36	31.11%	122
Nurse/ Midwife Specialist & AN/MP	12	13	12	34	34	-1	+22	+22	+21	+21	160.95%	39
Staff Nurse/ Staff Midwife	284	271	262	338	342	-8	+79	+79	+71	+57	26.12%	432
Nursing/ Midwifery Student	6		1	10	10	+1	+9	+9	+10	+4	-100.00%	19
Nursing/ Midwifery other	1	1	1	2	2	+0	+1	+1	+1	+1	98.00%	2
<b>Nursing &amp; Midwifery</b>	<b>378</b>	<b>369</b>	<b>364</b>	<b>491</b>	<b>498</b>	<b>-5</b>	<b>+134</b>	<b>+134</b>	<b>+128</b>	<b>+120</b>	<b>34.78%</b>	<b>614</b>
Therapy Professions	89	90	108	122	124	+17	+16	+16	+33	+35	36.77%	144
Health Science/ Diagnostics	2	2	2	1	1	+0	-1	-1	-1	-1	-45.00%	2
Social Care	201	228	241	260	254	+13	+13	+13	+26	+53	11.45%	293
Pharmacy				3	3		+3	+3	+3	+3	-100.00%	4
Psychologists	31	33	31	32	33	-2	+2	+2	-0	+2	-0.36%	37
Social Workers	27	28	35	39	40	+8	+5	+5	+13	+14	45.83%	47
H&SC, Other	4	5	3	4	3	-2	-0	-0	-2	-1	-45.59%	5
<b>Health &amp; Social Care Professionals</b>	<b>354</b>	<b>386</b>	<b>420</b>	<b>460</b>	<b>458</b>	<b>+34</b>	<b>+38</b>	<b>+38</b>	<b>+72</b>	<b>+105</b>	<b>18.70%</b>	<b>532</b>
Management (VIII & above)	15	17	19	22	23	+2	+4	+4	+6	+8	36.61%	24
Administrative/ Supervisory (V to VII)	38	51	61	71	73	+10	+12	+12	+22	+35	44.37%	77
Clerical (III & IV)	89	93	90	130	121	-3	+31	+31	+28	+32	30.14%	163
<b>Management &amp; Administrative</b>	<b>142</b>	<b>161</b>	<b>170</b>	<b>223</b>	<b>217</b>	<b>+10</b>	<b>+47</b>	<b>+47</b>	<b>+57</b>	<b>+75</b>	<b>35.30%</b>	<b>264</b>
Support	130	131	80	126	122	-52	+43	+43	-9	-8	-6.72%	173
Maintenance/ Technical	9	9	10	12	12	+1	+1	+1	+3	+2	30.65%	14
<b>General Support</b>	<b>139</b>	<b>140</b>	<b>90</b>	<b>137</b>	<b>134</b>	<b>-50</b>	<b>+44</b>	<b>+44</b>	<b>-6</b>	<b>-5</b>	<b>-4.34%</b>	<b>187</b>
Health Care Assistants	875	969	1,010	1,146	1,118	+41	+108	+108	+149	+242	15.34%	1,377
Care, other	336	373	394	404	405	+21	+11	+11	+32	+69	8.60%	481
<b>Patient &amp; Client Care</b>	<b>1,212</b>	<b>1,342</b>	<b>1,404</b>	<b>1,550</b>	<b>1,523</b>	<b>+62</b>	<b>+119</b>	<b>+119</b>	<b>+181</b>	<b>+311</b>	<b>13.47%</b>	<b>1,858</b>



## HSE South West by 38 Hospitals & Voluntary Agencies SEP 2024

SEP 2024	WTE DEC 2019	WTE DEC 2022	WTE DEC 2023	WTE AUG 2024	WTE SEP 2024	WTE Change 2023	WTE Change 2024	WTE Change AUG 2024	WTE Change Dec 2022 to SEP 2024	WTE Change Dec 2019 to SEP 2024	% WTE Change Dec 2022 to SEP 2024	No. SEP 2024
<b>Overall</b>	<b>4,208</b>	<b>4,708</b>	<b>4,916</b>	<b>5,357</b>	<b>5,333</b>	<b>+208</b>	<b>+417</b>	<b>-24</b>	<b>+625</b>	<b>+1,125</b>	<b>13.28%</b>	<b>6,326</b>
Mercy University Hospital	1,173	1,435	1,532	1,499	1,504	+97	-28	+4	+69	+331	4.80%	1,683
South Infirmary-Victoria University Hosp	787	844	908	963	963	+64	+55	+0	+119	+177	14.16%	1,117
St. John of God Kerry	315	321	324	331	339	+2	+15	+7	+17	+23	5.32%	406
Bros. of Charity Southern	740	827	871	909	894	+43	+23	-15	+67	+153	8.08%	1,117
Cope Foundation	1,091	1,163	1,168	1,226	1,215	+4	+47	-11	+52	+124	4.44%	1,427
Cork Dental Hospital	103	117	114	112	102	-3	-13	-11	-16	-1	-13.37%	174
Marymount University Hospital & Hospice				246	247		+247	+1	+247	+247	-100.00%	307
Marymount Uni Hosp & Hospice OP				70	70		+70	+0	+70	+70	-100.00%	95



## HSE South West Employment Report by Grade Group: SEP 2024

SEP 2024	WTE DEC 2019	WTE DEC 2022	WTE DEC 2023	WTE AUG 2024	WTE SEP 2024	WTE Change 2023	WTE Change 2024	WTE change since DEC 2023	WTE Change Dec 2022 to SEP 2024	WTE Change Dec 2019 to SEP 2024	% WTE Change Dec 2022 to SEP 2024	No. SEP 2024
<b>Overall</b>	<b>15,829</b>	<b>18,109</b>	<b>18,929</b>	<b>19,310</b>	<b>19,214</b>	<b>+819</b>	<b>+285</b>	<b>+285</b>	<b>+1,105</b>	<b>+3,385</b>	<b>6.10%</b>	<b>22,565</b>
Consultant Anaesthesia	55	52	61	66	66	+9	+5	+5	+14	+10	26.53%	69
Consultant Dentistry	2	5	5	5	5	+0	+0	+0	+1	+3	11.46%	6
Consultant Emergency Medicine	10	15	20	23	23	+5	+3	+3	+8	+13	50.50%	23
Consultant Intensive Care Medicine			1	1	1	+1	+0	+0	+1	+1	-100.00%	1
Consultant Medicine	99	135	157	170	171	+22	+14	+14	+36	+72	26.96%	185
Consultant Obstetrics & Gynaecology	19	23	26	32	32	+4	+6	+6	+9	+13	39.85%	34
Consultant Paediatrics	20	25	30	33	33	+5	+3	+3	+8	+13	32.29%	38
Consultant Pathology	30	32	36	39	37	+4	+2	+2	+6	+7	17.62%	42
Consultant Psychiatry	51	61	67	71	73	+6	+6	+6	+12	+22	18.97%	83
Consultant Radiology	34	38	40	47	47	+3	+6	+6	+9	+13	24.35%	51
Consultant Surgery	70	76	86	90	91	+9	+6	+6	+15	+21	19.83%	100
<b>Consultants</b>	<b>390</b>	<b>461</b>	<b>529</b>	<b>576</b>	<b>579</b>	<b>+68</b>	<b>+50</b>	<b>+50</b>	<b>+118</b>	<b>+189</b>	<b>25.56%</b>	<b>632</b>
Registrar	297	333	382	418	422	+48	+40	+40	+89	+125	26.67%	435
Senior Registrar	26	30	31	32	32	+0	+2	+2	+2	+6	6.38%	33
Specialist Registrar	133	172	175	187	190	+3	+15	+15	+18	+57	10.37%	194
<b>Registrars</b>	<b>457</b>	<b>535</b>	<b>587</b>	<b>637</b>	<b>644</b>	<b>+52</b>	<b>+57</b>	<b>+57</b>	<b>+109</b>	<b>+187</b>	<b>20.28%</b>	<b>662</b>
Interns	119	143	135	134	136	-8	+1	+1	-7	+17	-4.68%	136
Senior House Officer	290	334	397	397	411	+63	+15	+15	+77	+122	23.05%	418
<b>SHO/ Interns</b>	<b>409</b>	<b>477</b>	<b>531</b>	<b>530</b>	<b>547</b>	<b>+55</b>	<b>+16</b>	<b>+16</b>	<b>+70</b>	<b>+139</b>	<b>14.75%</b>	<b>554</b>
Dentists	62	69	71	60	62	+1	-9	-9	-8	-1	-11.08%	116
Other Medical	56	79	68	66	67	-10	-2	-2	-12	+10	-15.32%	126
<b>Medical/ Dental, other</b>	<b>119</b>	<b>148</b>	<b>139</b>	<b>126</b>	<b>128</b>	<b>-9</b>	<b>-11</b>	<b>-11</b>	<b>-20</b>	<b>+10</b>	<b>-13.33%</b>	<b>242</b>
<b>Medical &amp; Dental</b>	<b>1374</b>	<b>1622</b>	<b>1787</b>	<b>1869</b>	<b>1899</b>	<b>+165</b>	<b>+112</b>	<b>+112</b>	<b>+277</b>	<b>+525</b>	<b>17.09%</b>	<b>2,090</b>
Clinical Nurse/ Midwife Manager 1	187	186	184	174	181	-2	-3	-3	-5	-6	-2.59%	208
Clinical Nurse/ Midwife Manager 2	622	722	785	782	785	+63	+0	+0	+63	+163	8.73%	875
Clinical Nurse/ Midwife Manager 3	89	92	99	104	104	+7	+5	+5	+13	+16	13.95%	109
Director Nursing/Midwifery, Assistant	115	126	145	149	147	+19	+1	+1	+20	+32	16.10%	157
Director of Nursing/Midwifery	43	53	55	52	52	+2	-3	-3	-1	+9	-1.22%	54
<b>Nurse/ Midwife Manager</b>	<b>1,057</b>	<b>1,179</b>	<b>1,268</b>	<b>1,261</b>	<b>1,269</b>	<b>+89</b>	<b>+1</b>	<b>+1</b>	<b>+91</b>	<b>+213</b>	<b>7.70%</b>	<b>1,403</b>
Advanced Nurse/ Midwife Practitioner	23	55	66	74	79	+11	+13	+13	+24	+56	43.21%	83
Adv. Nurse/ Midwife, Candidate		18	53	41	42	+35	-11	-11	+24	+42	129.86%	43
Clinical Nurse/ Midwife Spec., Candidate				3	4		+4	+4	+4	+4	-100.00%	4
Clinical Nurse/ Midwife Specialist	153	217	258	278	275	+42	+17	+17	+58	+122	26.94%	314
<b>Nurse/ Midwife Specialist &amp; AN/MP</b>	<b>176</b>	<b>290</b>	<b>378</b>	<b>397</b>	<b>399</b>	<b>+88</b>	<b>+22</b>	<b>+22</b>	<b>+110</b>	<b>+224</b>	<b>37.87%</b>	<b>444</b>
Staff Midwives	241	231	224	221	218	-7	-6	-6	-12	-22	-5.34%	265
Staff Nurse [Intellectual Disability]	87	152	168	181	182	+16	+14	+14	+30	+95	19.84%	221
Staff Nurse [Psychiatric]	469	447	456	423	421	+9	-35	-35	-26	-48	-5.80%	457
Staff Nurses [General/ Children's]	2,917	3,375	3,601	3,732	3,684	+226	+83	+83	+309	+767	9.15%	4,267
<b>Staff Nurse/ Staff Midwife</b>	<b>3,713</b>	<b>4,205</b>	<b>4,450</b>	<b>4,557</b>	<b>4,505</b>	<b>+245</b>	<b>+56</b>	<b>+56</b>	<b>+301</b>	<b>+792</b>	<b>7.15%</b>	<b>5,210</b>
Public Health Nurse	216	216	209	216	215	-8	+6	+6	-2	-1	-0.77%	278
<b>Public Health Nurse</b>	<b>216</b>	<b>216</b>	<b>209</b>	<b>216</b>	<b>215</b>	<b>-8</b>	<b>+6</b>	<b>+6</b>	<b>-2</b>	<b>-1</b>	<b>-0.77%</b>	<b>278</b>
Nursing/ Midwifery awaiting registration	35	4	10	1	12	+6	+3	+3	+9	-22	238.12%	22
Post-registration Nurse/ Midwife Student	48	21	29	11	20	+8	-9	-9	-1	-28	-4.64%	25
Pre-registration Nurse/ Midwife Intern	39	43	15	114	104	-29	+89	+89	+61	+65	141.08%	202
<b>Nursing/ Midwifery Student</b>	<b>122</b>	<b>68</b>	<b>53</b>	<b>126</b>	<b>136</b>	<b>-15</b>	<b>+83</b>	<b>+83</b>	<b>+68</b>	<b>+14</b>	<b>101.21%</b>	<b>249</b>
Nursing Education/Clinical	9	12	15	18	19	+3	+4	+4	+7	+10	55.15%	21
Other Nursing/ Midwifery	1									-1	-100.00%	
<b>Nursing/ Midwifery other</b>	<b>10</b>	<b>12</b>	<b>15</b>	<b>18</b>	<b>19</b>	<b>+3</b>	<b>+4</b>	<b>+4</b>	<b>+7</b>	<b>+9</b>	<b>55.15%</b>	<b>21</b>
<b>Nursing &amp; Midwifery</b>	<b>5293</b>	<b>5969</b>	<b>6372</b>	<b>6575</b>	<b>6544</b>	<b>+402</b>	<b>+172</b>	<b>+172</b>	<b>+574</b>	<b>+1,251</b>	<b>9.62%</b>	<b>7,605</b>
Dietitians	76	97	113	108	107	+17	-6	-6	+11	+31	10.97%	131
Occupational Therapists	201	287	318	302	306	+31	-12	-12	+18	+104	6.40%	348
Orthoptists	4	2	1	2	2	-1	+0	+0	-1	-3	-25.00%	2
Physiotherapists	229	297	317	316	318	+20	+0	+0	+21	+89	7.01%	376
Podiatrists & Chiropodists	10	19	19	20	20	+1	+0	+0	+1	+10	6.23%	22





SEP 2024	WTE DEC 2019	WTE DEC 2022	WTE DEC 2023	WTE AUG 2024	WTE SEP 2024	WTE Change 2023	WTE Change 2024	WTE change since DEC 2023	WTE Change Dec 2022 to SEP 2024	WTE Change Dec 2019 to SEP 2024	% WTE Change Dec 2022 to SEP 2024	No. SEP 2024
<b>Overall</b>	<b>15,829</b>	<b>18,109</b>	<b>18,929</b>	<b>19,310</b>	<b>19,214</b>	<b>+819</b>	<b>+285</b>	<b>+285</b>	<b>+1,105</b>	<b>+3,385</b>	<b>6.10%</b>	<b>22,565</b>
Speech & Language Therapists	160	192	200	193	193	+8	-7	-7	+1	+33	0.49%	229
<b>Therapy Professions</b>	<b>681</b>	<b>893</b>	<b>969</b>	<b>942</b>	<b>945</b>	<b>+76</b>	<b>-25</b>	<b>-25</b>	<b>+51</b>	<b>+264</b>	<b>5.75%</b>	<b>1,108</b>
Audiology	11	14	12	12	12	-2	-0	-0	-2	+1	-15.80%	14
Biochemists	5	6	9	7	7	+3	-2	-2	+1	+2	12.50%	7
Cardiac Physiologists	20	24	21	23	22	-3	+1	+1	-2	+2	-7.79%	25
Clinical Engineering	19	21	25	25	25	+4	+1	+1	+4	+6	21.17%	26
Dosimetrists	8	10	10	10	11	+0	+1	+1	+1	+3	11.06%	13
E.C.G. Technicians	1	1				-1			-1	-1	-100.00%	
Gastrointestinal Physiologists			2	2	2	+2	+0	+0	+2	+2	-100.00%	2
Medical Science	254	274	281	283	283	+6	+3	+3	+9	+29	3.32%	327
Neuro-Physiologists	10	11	6	6	6	-5	-1	-1	-6	-5	-48.93%	7
Perfusionists	4	3	3	3	1	+0	-1	-1	-1	-3	-51.97%	2
Phlebotomists	34	45	44	44	42	-1	-3	-3	-4	+7	-7.77%	64
Physicists	23	30	33	35	35	+3	+2	+2	+5	+12	16.45%	37
Radiation Therapists	41	36	37	41	39	+1	+2	+2	+4	-1	9.86%	45
Radiographers	162	203	197	193	195	-6	-2	-2	-8	+33	-4.16%	224
Respiratory Physiologists	6	5	4	4	4	-1	-0	-0	-1	-2	-19.42%	4
Vascular Physiologists		1	1	1	1	+0	+0	+0	+0	+1	29.87%	1
<b>Health Science/ Diagnostics</b>	<b>598</b>	<b>683</b>	<b>684</b>	<b>689</b>	<b>685</b>	<b>+1</b>	<b>+1</b>	<b>+1</b>	<b>+1</b>	<b>+87</b>	<b>0.19%</b>	<b>798</b>
Social Care	240	272	278	298	292	+6	+14	+14	+20	+52	7.35%	335
<b>Social Care</b>	<b>240</b>	<b>272</b>	<b>278</b>	<b>298</b>	<b>292</b>	<b>+6</b>	<b>+14</b>	<b>+14</b>	<b>+20</b>	<b>+52</b>	<b>7.35%</b>	<b>335</b>
Pharmacists	60	95	103	99	100	+8	-3	-3	+6	+40	5.96%	120
Pharmacy Technicians	42	57	60	59	60	+3	-0	-0	+3	+18	5.40%	71
<b>Pharmacy</b>	<b>102</b>	<b>151</b>	<b>163</b>	<b>159</b>	<b>160</b>	<b>+12</b>	<b>-3</b>	<b>-3</b>	<b>+9</b>	<b>+58</b>	<b>5.75%</b>	<b>191</b>
Psychologists	139	162	167	154	157	+6	-11	-11	-5	+17	-3.05%	190
<b>Psychologists</b>	<b>139</b>	<b>162</b>	<b>167</b>	<b>154</b>	<b>157</b>	<b>+6</b>	<b>-11</b>	<b>-11</b>	<b>-5</b>	<b>+17</b>	<b>-3.05%</b>	<b>190</b>
Social Workers	143	186	214	208	213	+28	-1	-1	+27	+69	14.57%	241
<b>Social Workers</b>	<b>143</b>	<b>186</b>	<b>214</b>	<b>208</b>	<b>213</b>	<b>+28</b>	<b>-1</b>	<b>-1</b>	<b>+27</b>	<b>+69</b>	<b>14.57%</b>	<b>241</b>
Counsellor Therapists	41	43	50	50	51	+8	+1	+1	+8	+10	19.37%	57
Dental Hygienists	8	9	9	8	8	-1	-1	-1	-2	-1	-19.01%	12
HSCP Trainees/Students	17	10	16	2	6	+6	-10	-10	-3	-11	-35.59%	9
Other Health & Social Care	13	12	15	15	13	+3	-2	-2	+1	-0	9.11%	17
Play Therapists/ Specialists	1	3	3	5	5	+0	+2	+2	+2	+4	44.28%	6
Vaccinators		9	5	1	1	-4	-4	-4	-8	+1	-89.04%	13
<b>H&amp;SC, Other</b>	<b>79</b>	<b>86</b>	<b>98</b>	<b>81</b>	<b>83</b>	<b>+12</b>	<b>-15</b>	<b>-15</b>	<b>-2</b>	<b>+4</b>	<b>-2.65%</b>	<b>114</b>
<b>Health &amp; Social Care Professionals</b>	<b>1983</b>	<b>2434</b>	<b>2574</b>	<b>2530</b>	<b>2535</b>	<b>+141</b>	<b>-39</b>	<b>-39</b>	<b>+101</b>	<b>+551</b>	<b>4.16%</b>	<b>2,977</b>
CEO/Chief Officer	5	5	5	6	6	+0	+1	+1	+1	+1	22.20%	6
General Managers	35	44	44	41	40	+0	-4	-4	-4	+6	-8.24%	41
National Director, Assistant	5	8	8	8	8	+0	-0	-0	-0	+3	-3.13%	8
Other Executives	12	13	18	16	15	+5	-3	-3	+2	+3	13.69%	15
VIII	57	83	86	87	89	+2	+3	+3	+6	+32	7.15%	92
<b>Management (VIII &amp; above)</b>	<b>114</b>	<b>153</b>	<b>160</b>	<b>158</b>	<b>158</b>	<b>+8</b>	<b>-3</b>	<b>-3</b>	<b>+5</b>	<b>+44</b>	<b>3.24%</b>	<b>162</b>
Middle Management (V-VII)	360	558	683	667	665	+126	-18	-18	+107	+305	19.28%	721
<b>Administrative/ Supervisory (V to VII)</b>	<b>360</b>	<b>558</b>	<b>683</b>	<b>667</b>	<b>665</b>	<b>+126</b>	<b>-18</b>	<b>-18</b>	<b>+107</b>	<b>+305</b>	<b>19.28%</b>	<b>721</b>
General Administrative (III & IV)	1,388	1,541	1,609	1,625	1,599	+68	-10	-10	+58	+211	3.77%	1,845
<b>Clerical (III &amp; IV)</b>	<b>1,388</b>	<b>1,541</b>	<b>1,609</b>	<b>1,625</b>	<b>1,599</b>	<b>+68</b>	<b>-10</b>	<b>-10</b>	<b>+58</b>	<b>+211</b>	<b>3.77%</b>	<b>1,845</b>
<b>Management &amp; Administrative</b>	<b>1862</b>	<b>2251</b>	<b>2452</b>	<b>2450</b>	<b>2422</b>	<b>+201</b>	<b>-31</b>	<b>-31</b>	<b>+171</b>	<b>+560</b>	<b>7.58%</b>	<b>2,728</b>
Catering	131	130	295	380	380	+164	+85	+85	+249	+249	190.92%	432
Household Services	673	774	596	551	543	-179	-53	-53	-231	-130	-29.88%	666
Other Labs & Associated	31	69	73	71	66	+4	-7	-7	-3	+35	-4.25%	73
Other Support	156	179	120	118	114	-58	-6	-6	-64	-42	-36.07%	136
Portering	252	287	307	315	310	+20	+3	+3	+23	+59	8.00%	332
<b>Support</b>	<b>1,244</b>	<b>1,440</b>	<b>1,391</b>	<b>1,435</b>	<b>1,413</b>	<b>-49</b>	<b>+22</b>	<b>+22</b>	<b>-27</b>	<b>+169</b>	<b>-1.86%</b>	<b>1,639</b>
Maintenance	33	29	28	31	31	-2	+3	+3	+2	-2	5.12%	34
Technical Services	2	6	6	6	7	+0	+1	+1	+1	+5	16.67%	7
<b>Maintenance/ Technical</b>	<b>35</b>	<b>35</b>	<b>34</b>	<b>37</b>	<b>38</b>	<b>-2</b>	<b>+4</b>	<b>+4</b>	<b>+3</b>	<b>+3</b>	<b>7.07%</b>	<b>41</b>
<b>General Support</b>	<b>1279</b>	<b>1475</b>	<b>1425</b>	<b>1472</b>	<b>1451</b>	<b>-50</b>	<b>+26</b>	<b>+26</b>	<b>-24</b>	<b>+172</b>	<b>-1.64%</b>	<b>1,680</b>
Attendant/ Aide	808	673	624	599	596	-49	-28	-28	-77	-212	-11.43%	690

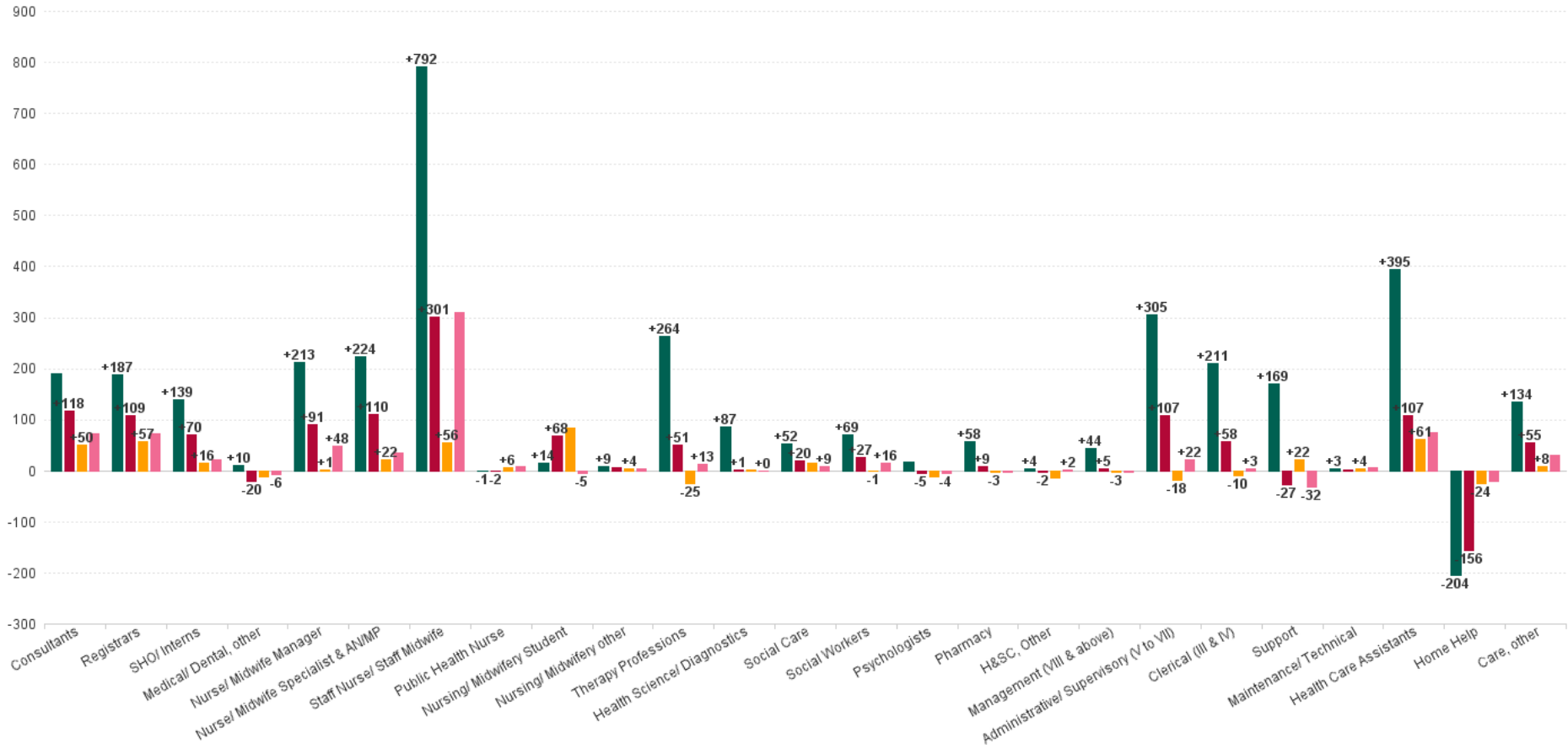


SEP 2024	WTE DEC 2019	WTE DEC 2022	WTE DEC 2023	WTE AUG 2024	WTE SEP 2024	WTE Change 2023	WTE Change 2024	WTE change since DEC 2023	WTE Change Dec 2022 to SEP 2024	WTE Change Dec 2019 to SEP 2024	% WTE Change Dec 2022 to SEP 2024	No. SEP 2024
<b>Overall</b>	<b>15,829</b>	<b>18,109</b>	<b>18,929</b>	<b>19,310</b>	<b>19,214</b>	<b>+819</b>	<b>+285</b>	<b>+285</b>	<b>+1,105</b>	<b>+3,385</b>	<b>6.10%</b>	<b>22,565</b>
Health Care Assistant/ Care Assistant	1,630	2,034	2,117	2,243	2,207	+83	+90	+90	+173	+577	8.51%	2,584
Health & Social Care Assistants	15	33	45	47	45	+11	-0	-0	+11	+30	33.37%	49
<b>Health Care Assistants</b>	<b>2,453</b>	<b>2,740</b>	<b>2,786</b>	<b>2,890</b>	<b>2,847</b>	<b>+46</b>	<b>+61</b>	<b>+61</b>	<b>+107</b>	<b>+395</b>	<b>3.92%</b>	<b>3,323</b>
Home Helps	1,124	1,076	944	928	920	-132	-24	-24	-156	-204	-14.54%	1,435
<b>Home Help</b>	<b>1,124</b>	<b>1,076</b>	<b>944</b>	<b>928</b>	<b>920</b>	<b>-132</b>	<b>-24</b>	<b>-24</b>	<b>-156</b>	<b>-204</b>	<b>-14.54%</b>	<b>1,435</b>
Health Promotion		15	18	16	17	+4	-1	-1	+3	+17	18.78%	23
Home Care Services	29	32	35	34	34	+3	-1	-1	+2	+6	6.50%	39
Other Care Grades	132	172	194	197	190	+22	-3	-3	+18	+58	10.72%	233
Pastoral Care	14	14	16	17	17	+2	+1	+1	+3	+3	21.89%	35
Workshop Services	287	310	326	332	338	+16	+12	+12	+28	+51	9.11%	397
<b>Care, other</b>	<b>462</b>	<b>542</b>	<b>588</b>	<b>595</b>	<b>597</b>	<b>+46</b>	<b>+8</b>	<b>+8</b>	<b>+55</b>	<b>+134</b>	<b>10.05%</b>	<b>727</b>
<b>Patient &amp; Client Care</b>	<b>4039</b>	<b>4358</b>	<b>4319</b>	<b>4413</b>	<b>4364</b>	<b>-40</b>	<b>+45</b>	<b>+45</b>	<b>+5</b>	<b>+325</b>	<b>0.12%</b>	<b>5,485</b>



# WTE Change by Staff Group

■ WTE change since DEC 2019 
 ■ WTE change since DEC 2022 
 ■ WTE change since DEC 2023 
 ■ WTE change since SEP 2023



## HSE South West Employment Report by WTE, Headcount, Gender, Full-Time / Part-Time etc. SEP 2024

SEP 2024	WTE SEP 2024	No. SEP 2024	WTE : No	Number Male	Number Female	Male WTE : No.	Female WTE : No	Perm Count %	Perm Count Male %	Perm Count Female %	Fulltime Count %	Part time Count %	FT Count Male %	FT Count Female %
<b>Total</b>	<b>19,214</b>	<b>22,565</b>	<b>1:0.9</b>	<b>19.19%</b>	<b>80.81%</b>	<b>1:0.9</b>	<b>1:0.8</b>	<b>79.06%</b>	<b>13.29%</b>	<b>65.76%</b>	<b>65.69%</b>	<b>34.31%</b>	<b>83.46%</b>	<b>61.48%</b>
Consultants	579	632	1:0.9	59.34%	40.66%	1:0.9	1:0.9	72.31%	43.67%	28.64%	87.50%	12.50%	90.93%	82.49%
Registrars	644	662	1:1	50.76%	49.24%	1:1	1:1	5.14%	3.32%	1.81%	96.68%	3.32%	97.32%	96.01%
SHO/ Interns	547	554	1:1	42.78%	57.22%	1:1	1:1	0.54%	0.36%	0.18%	99.46%	0.54%	99.58%	99.37%
Medical/ Dental, other	128	242	1:0.5	31.82%	68.18%	1:0.5	1:0.6	65.29%	17.77%	47.52%	17.77%	82.23%	16.88%	18.18%
<b>Medical &amp; Dental</b>	<b>1,899</b>	<b>2,090</b>	<b>1:0.9</b>	<b>49.04%</b>	<b>50.96%</b>	<b>1:0.9</b>	<b>1:0.9</b>	<b>31.20%</b>	<b>16.41%</b>	<b>14.78%</b>	<b>85.50%</b>	<b>14.50%</b>	<b>89.46%</b>	<b>81.69%</b>
Nurse/ Midwife Manager	1,269	1,403	1:0.9	9.05%	90.95%	1:1	1:0.9	96.79%	8.70%	88.10%	73.91%	26.09%	92.91%	72.02%
Nurse/ Midwife Specialist & AN/MP	399	444	1:0.9	9.23%	90.77%	1:1	1:0.9	97.52%	8.78%	88.74%	76.80%	23.20%	100.00%	74.44%
Staff Nurse/ Staff Midwife	4,505	5,210	1:0.9	8.79%	91.21%	1:1	1:0.9	81.54%	6.89%	74.64%	65.14%	34.86%	88.86%	62.86%
Public Health Nurse	215	278	1:0.8	0.36%	99.64%	1:1	1:0.8	96.04%	0.36%	95.68%	55.40%	44.60%	100.00%	55.23%
Public Health Nurse	215	278	1:0.8	0.36%	99.64%	1:1	1:0.8	96.04%	0.36%	95.68%	55.40%	44.60%	100.00%	55.23%
Nursing/ Midwifery awaiting registration	12	22	1:0.6		100.00%	1:	1:0.6	4.55%		4.55%	100.00%			100.00%
Post-registration Nurse/ Midwife Student	20	25	1:0.8		100.00%	1:	1:0.8	40.00%		40.00%	100.00%			100.00%
Pre-registration Nurse/ Midwife Intern	104	202	1:0.5	4.46%	95.54%	1:0.5	1:0.5				100.00%		100.00%	100.00%
Nursing/ Midwifery Student	136	249	1:0.5	3.61%	96.39%	1:0.5	1:0.5	4.42%		4.42%	100.00%		100.00%	100.00%
Nursing/ Midwifery other	19	21	1:0.9	4.76%	95.24%	1:1	1:0.9	90.48%	4.76%	85.71%	76.19%	23.81%	100.00%	75.00%
<b>Nursing &amp; Midwifery</b>	<b>6,544</b>	<b>7,605</b>	<b>1:0.9</b>	<b>8.38%</b>	<b>91.62%</b>	<b>1:1</b>	<b>1:0.9</b>	<b>83.31%</b>	<b>6.86%</b>	<b>76.45%</b>	<b>68.26%</b>	<b>31.74%</b>	<b>90.58%</b>	<b>66.22%</b>
Therapy Professions	945	1,108	1:0.9	9.48%	90.52%	1:0.9	1:0.8	87.27%	8.12%	79.15%	71.39%	28.61%	89.52%	69.49%
Health Science/ Diagnostics	685	798	1:0.9	21.05%	78.95%	1:0.9	1:0.8	85.21%	18.42%	66.79%	72.18%	27.82%	92.86%	66.67%
Social Care	292	335	1:0.9	17.01%	82.99%	1:0.9	1:0.9	92.24%	15.22%	77.01%	79.10%	20.90%	96.49%	75.54%
Social Workers	213	241	1:0.9	17.84%	82.16%	1:1	1:0.9	89.21%	15.77%	73.44%	78.84%	21.16%	95.35%	75.25%
Psychologists	157	190	1:0.8	15.79%	84.21%	1:0.9	1:0.8	74.74%	14.21%	60.53%	76.84%	23.16%	96.67%	73.13%
Pharmacy	160	191	1:0.8	5.76%	94.24%	1:0.8	1:0.8	68.06%	3.66%	64.40%	69.63%	30.37%	72.73%	69.44%
H&SC, Other	83	114	1:0.7	26.32%	73.68%	1:0.8	1:0.7	76.32%	21.93%	54.39%	64.04%	35.96%	76.67%	59.52%
<b>Health &amp; Social Care Professionals</b>	<b>2,535</b>	<b>2,977</b>	<b>1:0.9</b>	<b>14.91%</b>	<b>85.09%</b>	<b>1:0.9</b>	<b>1:0.8</b>	<b>84.98%</b>	<b>12.93%</b>	<b>72.05%</b>	<b>73.03%</b>	<b>26.97%</b>	<b>91.44%</b>	<b>69.80%</b>
Management (VIII & above)	158	162	1:1	27.78%	72.22%	1:1	1:1	96.91%	26.54%	70.37%	97.53%	2.47%	100.00%	96.58%
Administrative/ Supervisory (V to VII)	665	721	1:0.9	20.25%	79.75%	1:1	1:0.9	97.23%	20.11%	77.12%	81.55%	18.45%	97.26%	77.57%
Clerical (III & IV)	1,599	1,845	1:0.9	13.06%	86.94%	1:0.9	1:0.9	80.76%	10.14%	70.62%	66.78%	33.22%	90.87%	63.15%
<b>Management &amp; Administrative</b>	<b>2,422</b>	<b>2,728</b>	<b>1:0.9</b>	<b>15.84%</b>	<b>84.16%</b>	<b>1:1</b>	<b>1:0.9</b>	<b>86.07%</b>	<b>13.75%</b>	<b>72.32%</b>	<b>72.51%</b>	<b>27.49%</b>	<b>93.98%</b>	<b>68.47%</b>



SEP 2024	WTE SEP 2024	No. SEP 2024	WTE : No	Number Male	Number Female	Male WTE : No.	Female WTE : No	Perm Count %	Perm Count Male %	Perm Count Female %	Fulltime Count %	Part time Count %	FT Count Male %	FT Count Female %
<b>Total</b>	<b>19,214</b>	<b>22,565</b>	<b>1:0.9</b>	<b>19.19%</b>	<b>80.81%</b>	<b>1:0.9</b>	<b>1:0.8</b>	<b>79.06%</b>	<b>13.29%</b>	<b>65.76%</b>	<b>65.69%</b>	<b>34.31%</b>	<b>83.46%</b>	<b>61.48%</b>
Support	1,413	1,639	1:0.9	39.84%	60.16%	1:0.9	1:0.8	71.87%	25.93%	45.94%	56.01%	43.99%	74.58%	43.71%
Maintenance/ Technical	38	41	1:0.9	92.68%	7.32%	1:0.9	1:0.9	90.24%	82.93%	7.32%	85.37%	14.63%	89.47%	33.33%
<b>General Support</b>	<b>1,451</b>	<b>1,680</b>	<b>1:0.9</b>	<b>41.13%</b>	<b>58.87%</b>	<b>1:0.9</b>	<b>1:0.8</b>	<b>72.32%</b>	<b>27.32%</b>	<b>45.00%</b>	<b>56.73%</b>	<b>43.27%</b>	<b>75.40%</b>	<b>43.68%</b>
Health Care Assistants	2,847	3,323	1:0.9	23.98%	76.02%	1:0.9	1:0.8	84.98%	20.34%	64.64%	64.58%	35.42%	77.79%	60.41%
Home Helps	920	1,435	1:0.6	8.36%	91.64%	1:0.8	1:0.6	93.45%	7.32%	86.13%	10.59%	89.41%	35.00%	8.37%
Home Help	920	1,435	1:0.6	8.36%	91.64%	1:0.8	1:0.6	93.45%	7.32%	86.13%	10.59%	89.41%	35.00%	8.37%
Care, other	597	727	1:0.8	25.31%	74.69%	1:0.9	1:0.8	81.57%	18.57%	63.00%	60.94%	39.06%	67.93%	58.56%
<b>Patient &amp; Client Care</b>	<b>4,364</b>	<b>5,485</b>	<b>1:0.8</b>	<b>20.07%</b>	<b>79.93%</b>	<b>1:0.9</b>	<b>1:0.8</b>	<b>86.75%</b>	<b>16.70%</b>	<b>70.05%</b>	<b>49.97%</b>	<b>50.03%</b>	<b>71.48%</b>	<b>44.57%</b>



## HSE South West Employment Report by Care Group: WTE, Headcount, Gender, Full-Time / Part-Time etc. SEP 2024

SEP 2024	WTE SEP 2024	No. SEP 2024	WTE : No	Number Male	Number Female	Male WTE : No.	Female WTE : No	Perm Count %	Number Male %	Number Female %	Fulltime Count %	Part time Count %	FT Count Male %	FT Count Female %
<b>Total</b>	<b>19,214</b>	<b>22,565</b>	<b>1:0.9</b>	<b>4,330</b>	<b>18,235</b>	<b>1:0.9</b>	<b>1:0.8</b>	<b>79.06%</b>	<b>13.29%</b>	<b>65.76%</b>	<b>65.69%</b>	<b>34.31%</b>	<b>83.46%</b>	<b>61.48%</b>
Acute Hospital Services	10,063	11,307	1:0.9	2,457	8,850	1:1	1:0.9	75.20%	13.61%	61.59%	72.77%	27.23%	89.09%	68.24%
Community Health & Wellbeing	44	63	1:0.7	7	56	1:0.6	1:0.7	73.02%	4.76%	68.25%	60.32%	39.68%	57.14%	60.71%
Disabilities	2,762	3,293	1:0.8	698	2,595	1:0.9	1:0.8	84.36%	17.31%	67.05%	71.88%	28.12%	76.36%	70.67%
Mental Health	1,566	1,756	1:0.9	444	1,312	1:0.9	1:0.9	75.91%	18.68%	57.23%	82.80%	17.20%	92.34%	79.57%
Older People	2,769	3,613	1:0.8	456	3,157	1:0.9	1:0.8	86.13%	9.99%	76.14%	37.64%	62.36%	63.82%	33.86%
Primary Care	1,964	2,484	1:0.8	262	2,222	1:0.8	1:0.8	81.40%	7.77%	73.63%	53.66%	46.34%	69.08%	51.85%
CHO Operations	46	49	1:0.9	6	43	1:1	1:0.9	91.84%	12.24%	79.59%	89.80%	10.20%	100.00%	88.37%



Month-on-Month Summary	% WTE change since AUG 2024	WTE change since AUG 2024	Acute Hospital Services	Disabilities	Mental Health	Older People	Primary Care	Community Health & Wellbeing	CHO Operations
<b>Total</b>	<b>-0.5%</b>	<b>-96.0</b>	<b>-45.4</b>	<b>-17.7</b>	<b>+3.6</b>	<b>-21.8</b>	<b>-15.0</b>	<b>+0.3</b>	<b>+0.0</b>
Consultants	+0.6%	+3.5	+1.3	+0.0	+2.2	+0.0	-0.1		
Registrars	+1.1%	+6.8	+8.4		-0.2		-1.4		
SHO/ Interns	+3.2%	+17.0	+12.0		+4.9	+0.0	+0.0		
Medical/ Dental, other	+2.0%	+2.5	+0.3	+0.0	+0.0	+0.4	+1.8		
<b>Medical &amp; Dental</b>	<b>+1.6%</b>	<b>+29.7</b>	<b>+22.1</b>	<b>+0.0</b>	<b>+6.9</b>	<b>+0.4</b>	<b>+0.3</b>		
Nurse/ Midwife Manager	+0.7%	+8.4	+10.1	+4.6	-3.3	-4.0	+1.1	+0.0	-0.1
Nurse/ Midwife Specialist & AN/MP	+0.7%	+2.6	+2.7	+0.0	+0.1	-0.0	-0.1		+0.0
Staff Nurse/ Staff Midwife	-1.1%	-52.1	-41.5	+2.1	-3.0	+0.2	-9.9		
Public Health Nurse	-0.6%	-1.4				+0.0	-1.4		
Nursing/ Midwifery Student	+7.6%	+9.6	+0.7	+0.0	-1.0	+1.0	+8.9		
Nursing/ Midwifery other	+6.3%	+1.1	+1.1	+0.0	+0.0		+0.0		
<b>Nursing &amp; Midwifery</b>	<b>-0.5%</b>	<b>-31.7</b>	<b>-26.9</b>	<b>+6.6</b>	<b>-7.2</b>	<b>-2.9</b>	<b>-1.4</b>	<b>+0.0</b>	<b>-0.1</b>
Therapy Professions	+0.3%	+3.2	-2.4	+2.4	+0.6	-0.2	+2.7	+0.1	
Health Science/ Diagnostics	-0.7%	-4.5	-4.6			+0.0	+0.1		
Social Care	-1.8%	-5.5		-6.2	+0.7	+0.0	+0.0		
Social Workers	+2.2%	+4.6	+1.0	+0.6	+2.2		+0.8		-0.0
Psychologists	+2.0%	+3.0	+0.8	+1.0	+1.9		-0.7		
Pharmacy	+1.0%	+1.6	+1.5		+0.0	+0.3	-0.2		+0.0
H&SC, Other	+3.0%	+2.4	+3.5	-0.4	-0.0	-0.8	+0.3	-0.3	



<b>Health &amp; Social Care Professionals</b>	<b>+0.2%</b>	<b>+4.7</b>	<b>-0.1</b>	<b>-2.6</b>	<b>+5.3</b>	<b>-0.6</b>	<b>+3.0</b>	<b>-0.2</b>	<b>-0.0</b>
Management (VIII & above)	-0.2%	-0.3	-0.1	+0.6	-1.0	-1.0	+1.2	+0.0	+0.0
Administrative/ Supervisory (V to VII)	-0.3%	-1.9	-0.6	+2.4	-0.1	-0.5	-1.9	-0.9	-0.4
Clerical (III & IV)	-1.6%	-26.4	-15.3	-3.8	-2.4	-1.4	-3.9	-0.0	+0.4
<b>Management &amp; Administrative</b>	<b>-1.2%</b>	<b>-28.6</b>	<b>-16.0</b>	<b>-0.8</b>	<b>-3.5</b>	<b>-2.9</b>	<b>-4.6</b>	<b>-0.9</b>	<b>+0.1</b>
Support	-1.5%	-21.5	-18.1	-1.7	-0.2	+0.1	-1.6		
Maintenance/ Technical	+2.8%	+1.0	+1.0	+0.0	+0.0	+0.0	+0.0		
<b>General Support</b>	<b>-1.4%</b>	<b>-20.5</b>	<b>-17.1</b>	<b>-1.7</b>	<b>-0.2</b>	<b>+0.1</b>	<b>-1.6</b>		
Health Care Assistants	-1.5%	-42.7	-6.8	-27.4	+2.0	-7.9	-2.6		
Home Help	-0.9%	-8.6				-7.9	-0.7		
Care, other	+0.3%	+1.6	-0.6	+8.1	+0.2	-0.1	-7.4	+1.4	
<b>Patient &amp; Client Care</b>	<b>-1.1%</b>	<b>-49.7</b>	<b>-7.4</b>	<b>-19.3</b>	<b>+2.3</b>	<b>-15.9</b>	<b>-10.7</b>	<b>+1.4</b>	





Year-on-Year Summary	% WTE change since SEP 2023	WTE change since SEP 2023	Acute Hospital Services	Disabilities	Mental Health	Older People	Primary Care	Community Health & Wellbeing	CHO Operations
<b>Total</b>	<b>+3.6%</b>	<b>+675.0</b>	<b>+358.5</b>	<b>+103.1</b>	<b>-7.8</b>	<b>+48.6</b>	<b>+174.5</b>	<b>-2.0</b>	<b>-0.1</b>
Consultants	+14.2%	+71.9	+59.9	-0.0	+8.2	+0.0	+3.8		
Registrars	+12.7%	+72.4	+57.2		+1.5		+13.6		
SHO/ Interns	+4.1%	+21.6	+10.7		+7.9	+1.0	+2.0		
Medical/ Dental, other	-4.6%	-6.3	-1.1	+0.0	+0.0	+0.5	-5.4	-0.4	
<b>Medical &amp; Dental</b>	<b>+9.2%</b>	<b>+159.6</b>	<b>+126.7</b>	<b>-0.0</b>	<b>+17.6</b>	<b>+1.5</b>	<b>+14.1</b>	<b>-0.4</b>	
Nurse/ Midwife Manager	+4.0%	+48.5	+31.6	+0.3	-3.4	+12.6	+9.9	-1.2	-1.3
Nurse/ Midwife Specialist & AN/MP	+9.9%	+35.9	+16.0	-2.5	+1.9	-0.2	+20.7		+0.0
Staff Nurse/ Staff Midwife	+7.4%	+309.5	+213.1	+6.0	-4.3	+41.3	+53.4		
Public Health Nurse	+4.0%	+8.2				-0.2	+8.4		
Nursing/ Midwifery Student	-3.6%	-5.1	+4.0	+1.5	-2.0	+1.0	-9.5		
Nursing/ Midwifery other	+33.9%	+4.8	+1.8	+0.0	+2.0		+1.0		
<b>Nursing &amp; Midwifery</b>	<b>+6.5%</b>	<b>+401.7</b>	<b>+266.4</b>	<b>+5.4</b>	<b>-5.9</b>	<b>+54.4</b>	<b>+84.0</b>	<b>-1.2</b>	<b>-1.3</b>
Therapy Professions	+1.4%	+13.5	+14.0	+9.9	-4.8	+0.3	-5.9	+0.0	
Health Science/ Diagnostics	+0.0%	+0.1	-0.2			+0.0	+0.4		
Social Care	+3.1%	+8.9		+8.2	-0.4	+0.0	+1.1		
Social Workers	+7.9%	+15.7	+2.4	+5.8	-2.9		+7.8		+2.6
Psychologists	-2.8%	-4.5	+3.2	-0.1	+1.6		-9.1		
Pharmacy	-1.2%	-1.9	-3.8		-0.9	-0.2	+3.1		+0.0
H&SC, Other	+2.3%	+1.8	-0.7	+2.1	-0.2	+2.3	-2.4	+0.8	



<b>Health &amp; Social Care Professionals</b>	<b>+1.3%</b>	<b>+33.7</b>	<b>+14.8</b>	<b>+25.9</b>	<b>-7.7</b>	<b>+2.3</b>	<b>-5.0</b>	<b>+0.8</b>	<b>+2.6</b>
Management (VIII & above)	-2.0%	-3.3	+1.6	-1.6	-2.0	-4.7	+4.2	+0.0	-0.9
Administrative/ Supervisory (V to VII)	+3.4%	+22.2	+4.7	+14.4	-1.0	+8.4	-4.1	+1.1	-1.4
Clerical (III & IV)	+0.2%	+3.4	-32.1	+4.1	+12.2	+2.4	+17.8	-2.1	+1.1
<b>Management &amp; Administrative</b>	<b>+0.9%</b>	<b>+22.3</b>	<b>-25.7</b>	<b>+17.0</b>	<b>+9.2</b>	<b>+6.1</b>	<b>+17.9</b>	<b>-0.9</b>	<b>-1.3</b>
Support	-2.2%	-32.2	-48.1	-15.5	-7.0	-7.2	+45.6		
Maintenance/ Technical	+16.4%	+5.3	+4.0	-0.7	+0.0	+0.0	+2.0		
<b>General Support</b>	<b>-1.8%</b>	<b>-26.8</b>	<b>-44.1</b>	<b>-16.2</b>	<b>-7.0</b>	<b>-7.2</b>	<b>+47.6</b>		
Health Care Assistants	+2.7%	+74.7	+7.2	+46.0	-14.2	+10.5	+25.3		
Home Help	-2.3%	-21.4				-20.3	-1.1		
Care, other	+5.5%	+31.3	+13.3	+25.2	+0.2	+1.2	-8.3	-0.3	
<b>Patient &amp; Client Care</b>	<b>+2.0%</b>	<b>+84.5</b>	<b>+20.4</b>	<b>+71.1</b>	<b>-14.0</b>	<b>-8.6</b>	<b>+15.9</b>	<b>-0.3</b>	



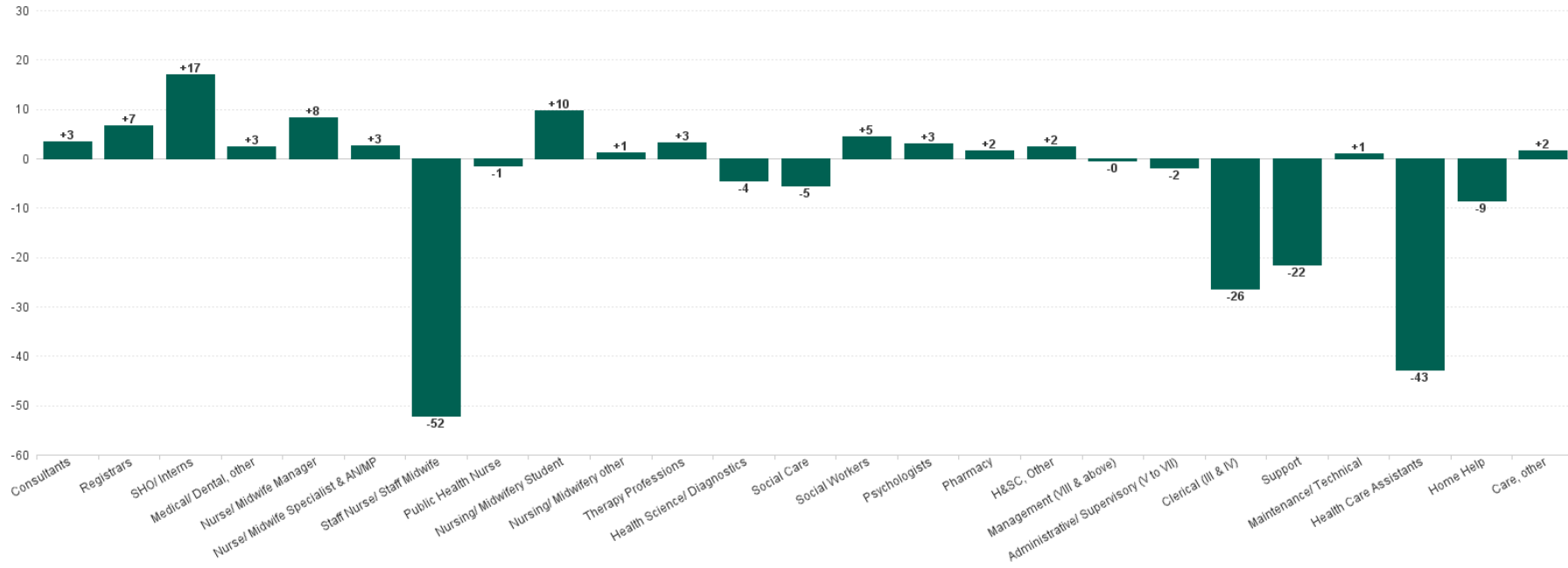
Year-to-Date Summary	% WTE change since DEC 2023	WTE change since DEC 2023	Acute Hospital Services	Disabilities	Mental Health	Older People	Primary Care	Community Health & Wellbeing	CHO Operations
<b>Total</b>	<b>+1.5%</b>	<b>+285.2</b>	<b>+101.8</b>	<b>+75.6</b>	<b>-49.0</b>	<b>+16.9</b>	<b>+149.0</b>	<b>-7.6</b>	<b>-1.4</b>
Consultants	+9.5%	+50.4	+42.6	-0.0	+5.2	+0.0	+2.7		
Registrars	+9.7%	+57.0	+43.1		-1.1		+15.0		
SHO/ Interns	+3.0%	+15.7	+8.9		+3.8	+1.0	+2.0		
Medical/ Dental, other	-7.9%	-11.0	-1.0	+0.0	+0.0	+1.5	-11.5		
<b>Medical &amp; Dental</b>	<b>+6.3%</b>	<b>+112.1</b>	<b>+93.6</b>	<b>-0.0</b>	<b>+7.9</b>	<b>+2.5</b>	<b>+8.1</b>		
Nurse/ Midwife Manager	+0.1%	+1.4	-15.1	+1.2	+0.2	+4.9	+11.4	-1.1	-0.2
Nurse/ Midwife Specialist & AN/MP	+5.8%	+21.8	+7.9	-1.5	-5.4	-1.1	+22.0		+0.0
Staff Nurse/ Staff Midwife	+1.3%	+55.9	+22.2	-0.7	-38.4	+27.2	+45.7		
Public Health Nurse	+2.9%	+6.1				-0.4	+6.5		
Nursing/ Midwifery Student	+156.6%	+83.0	+67.1	+8.5	+21.0	-3.5	-10.1		
Nursing/ Midwifery other	+25.4%	+3.8	+0.8	+0.0	+2.0		+1.0		
<b>Nursing &amp; Midwifery</b>	<b>+2.7%</b>	<b>+172.0</b>	<b>+82.9</b>	<b>+7.5</b>	<b>-20.6</b>	<b>+27.0</b>	<b>+76.4</b>	<b>-1.1</b>	<b>-0.2</b>
Therapy Professions	-2.5%	-24.7	-13.2	+2.0	-6.1	-2.2	-5.2	+0.0	
Health Science/ Diagnostics	+0.1%	+0.6	+1.6			+0.0	-1.0		
Social Care	+5.1%	+14.2		+13.1	+0.8	+0.0	+0.3		
Social Workers	-0.6%	-1.3	+1.4	-2.2	-4.6		+4.9		-0.7
Psychologists	-6.3%	-10.6	+2.3	+2.0	-5.8		-9.0		
Pharmacy	-1.9%	-3.1	-5.3		-0.8	-0.2	+3.2		+0.0
H&SC, Other	-14.9%	-14.6	-9.0	-1.1	-1.0	-0.7	+1.3	-4.2	



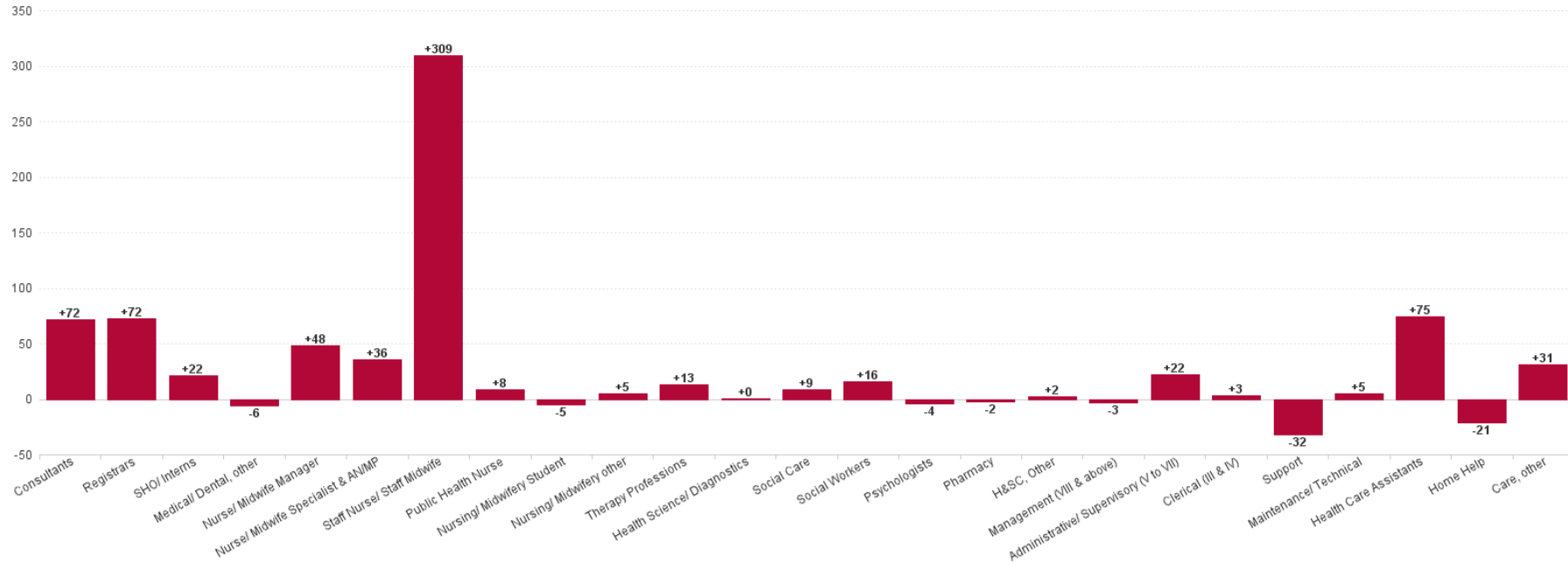
<b>Health &amp; Social Care Professionals</b>	<b>-1.5%</b>	<b>-39.5</b>	<b>-22.2</b>	<b>+13.7</b>	<b>-17.4</b>	<b>-3.0</b>	<b>-5.6</b>	<b>-4.2</b>	<b>-0.7</b>
Management (VIII & above)	-1.6%	-2.6	+0.9	-2.7	-1.0	-3.4	+3.5	+0.0	+0.1
Administrative/ Supervisory (V to VII)	-2.6%	-18.0	-13.8	+5.2	-2.8	+8.0	-13.0	-0.1	-1.7
Clerical (III & IV)	-0.6%	-10.0	-29.4	+7.2	-1.5	-0.8	+14.7	-1.4	+1.1
<b>Management &amp; Administrative</b>	<b>-1.3%</b>	<b>-30.7</b>	<b>-42.3</b>	<b>+9.7</b>	<b>-5.2</b>	<b>+3.8</b>	<b>+5.2</b>	<b>-1.4</b>	<b>-0.5</b>
Support	+1.6%	+21.9	-10.3	-3.8	-6.0	-4.9	+46.9		
Maintenance/ Technical	+12.6%	+4.3	+3.0	-0.8	+0.0	+0.0	+2.0		
<b>General Support</b>	<b>+1.8%</b>	<b>+26.1</b>	<b>-7.3</b>	<b>-4.6</b>	<b>-6.0</b>	<b>-4.9</b>	<b>+48.9</b>		
Health Care Assistants	+2.2%	+61.1	-8.8	+37.6	-7.6	+14.2	+25.8		
Home Help	-2.6%	-24.4				-23.3	-1.1		
Care, other	+1.4%	+8.5	+5.9	+11.7	+0.0	+0.5	-8.8	-0.9	
<b>Patient &amp; Client Care</b>	<b>+1.0%</b>	<b>+45.2</b>	<b>-2.9</b>	<b>+49.3</b>	<b>-7.6</b>	<b>-8.6</b>	<b>+15.9</b>	<b>-0.9</b>	



Previous Month Summary Chart: Change since AUG 2024



Previous Year Summary Chart: Change since SEP 2023



YTD Summary Chart: Change since DEC 2023

