

HSE South West : OCT 2024

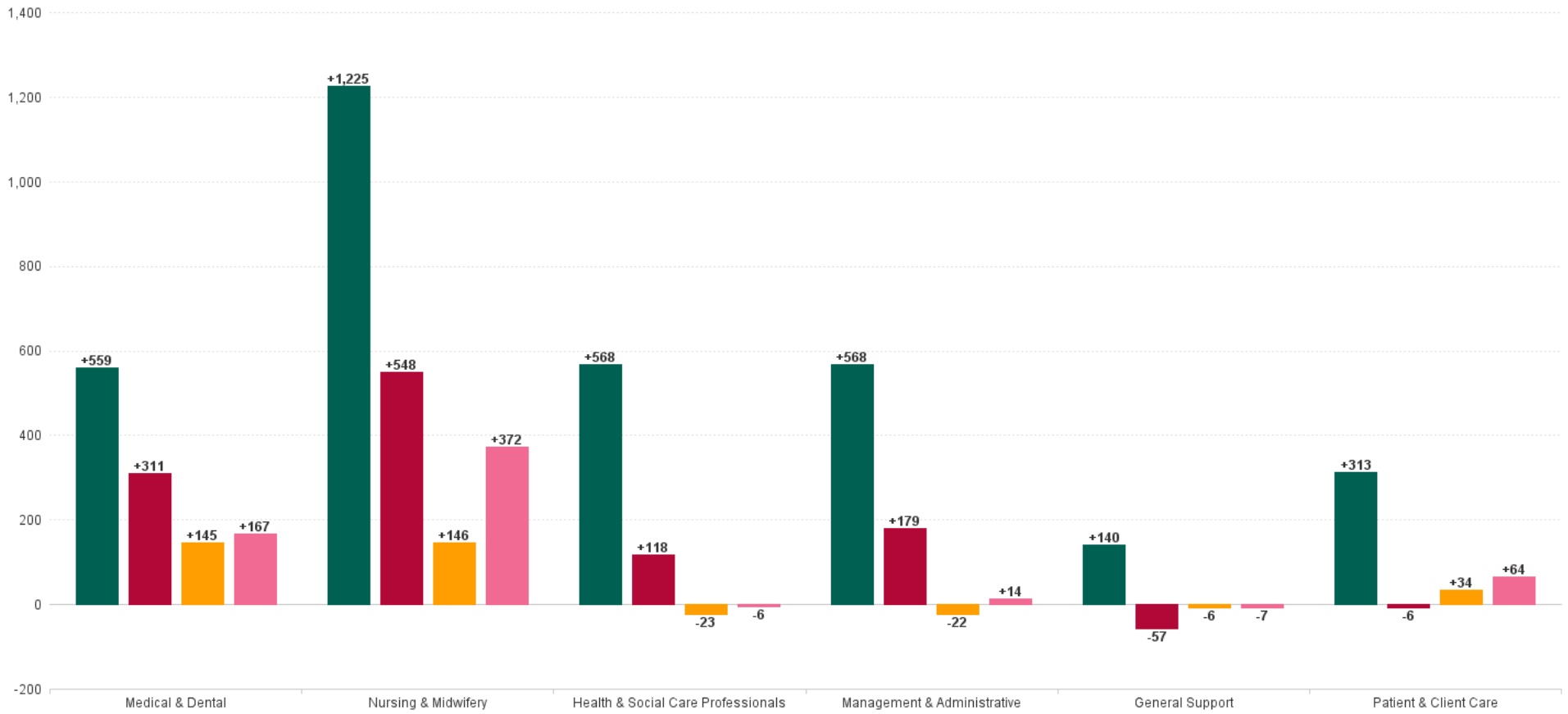
Employment Report by Staff Group

OCT 2024	WTE DEC 2019	WTE DEC 2022	WTE DEC 2023	WTE SEP 2024	WTE OCT 2024	WTE Change 2023	WTE Change 2024	WTE Change SEP 2024	WTE Change Dec 2022 to OCT 2024	WTE Change Dec 2019 to OCT 2024	% WTE Change Dec 2022 to OCT 2024	No. OCT 2024
Overall	15,829	18,109	18,929	19,214	19,203	+819	+274	-11	+1,093	+3,373	6.04%	22,655
Consultants	390	461	529	579	590	+68	+61	+11	+129	+200	27.97%	638
Registrars	457	535	587	644	650	+52	+63	+6	+114	+193	21.36%	668
SHO/ Interns	409	477	531	547	559	+55	+28	+12	+82	+151	17.25%	566
Medical/ Dental, other	119	148	139	128	133	-9	-6	+5	-15	+14	-10.22%	245
Medical & Dental	1,374	1,622	1,787	1,899	1,932	+165	+145	+33	+311	+559	19.15%	2,117
Nurse/ Midwife Manager	1,057	1,179	1,268	1,269	1,266	+89	-2	-4	+87	+209	7.39%	1,403
Nurse/ Midwife Specialist & AN/MP	176	290	378	399	404	+88	+27	+5	+114	+229	39.52%	453
Staff Nurse/ Staff Midwife	3,713	4,205	4,450	4,505	4,512	+245	+62	+6	+307	+798	7.30%	5,292
Public Health Nurse	216	216	209	215	219	-8	+11	+5	+3	+4	1.41%	286
<i>Nursing/ Midwifery awaiting registration</i>	35	4	10	12	22	+6	+13	+10	+19	-12	518.23%	42
<i>Post-registration Nurse/ Midwife Student</i>	48	21	29	20	28	+8	-1	+8	+7	-21	31.91%	28
<i>Pre-registration Nurse/ Midwife Intern</i>	39	43	15	104	46	-29	+32	-58	+3	+7	6.85%	141
Nursing/ Midwifery Student	122	68	53	136	96	-15	+43	-40	+28	-26	41.99%	211
Nursing/ Midwifery other	10	12	15	19	21	+3	+6	+2	+9	+11	71.15%	24
Nursing & Midwifery	5,293	5,969	6,372	6,544	6,518	+402	+146	-26	+548	+1,225	9.19%	7,669
<i>Dietitians</i>	76	97	113	107	108	+17	-5	+1	+12	+32	12.25%	130
<i>Occupational Therapists</i>	201	287	318	306	306	+31	-12	+0	+19	+105	6.54%	346
<i>Orthoptists</i>	4	2	1	2	2	-1	+0	+0	-1	-3	-25.00%	2
<i>Physiotherapists</i>	229	297	317	318	317	+20	-0	-1	+20	+88	6.78%	371
<i>Podiatrists & Chiropodists</i>	10	19	19	20	19	+1	-0	-1	+0	+9	2.10%	21
<i>Speech & Language Therapists</i>	160	192	200	193	190	+8	-10	-3	-2	+30	-0.99%	226
Therapy Professions	681	893	969	945	942	+76	-27	-3	+49	+261	5.46%	1,096
Health Science/ Diagnostics	598	683	684	685	686	+1	+2	+1	+3	+88	0.39%	799
Social Care	240	272	278	292	293	+6	+15	+1	+21	+53	7.77%	336
Pharmacy	102	151	163	160	160	+12	-3	+0	+9	+58	5.85%	193
Psychologists	139	162	167	157	162	+6	-6	+5	+0	+22	0.06%	185
Social Workers	143	186	214	213	214	+28	+0	+1	+28	+71	15.32%	241
H&SC, Other	79	86	98	83	94	+12	-4	+10	+8	+15	9.58%	117
Health & Social Care Professionals	1,983	2,434	2,574	2,535	2,552	+141	-23	+17	+118	+568	4.86%	2,967
Management (VIII & above)	114	153	160	158	156	+8	-4	-1	+4	+43	2.40%	160
Administrative/ Supervisory (V to VII)	360	558	683	665	670	+126	-13	+5	+112	+310	20.16%	727
Clerical (III & IV)	1,388	1,541	1,609	1,599	1,604	+68	-5	+5	+63	+216	4.09%	1,867
Management & Administrative	1,862	2,251	2,452	2,422	2,430	+201	-22	+8	+179	+568	7.95%	2,754
Support	1,244	1,440	1,391	1,413	1,380	-49	-12	-33	-60	+136	-4.18%	1,620
Maintenance/ Technical	35	35	34	38	39	-2	+5	+1	+4	+4	9.89%	42
General Support	1,279	1,475	1,425	1,451	1,419	-50	-6	-32	-57	+140	-3.84%	1,662
Health Care Assistants	2,453	2,740	2,786	2,847	2,825	+46	+39	-22	+85	+372	3.10%	3,328
Home Help	1,124	1,076	944	920	920	-132	-24	+0	-156	-204	-14.50%	1,419
Care, other	462	542	588	597	607	+46	+19	+10	+65	+145	11.95%	739
Patient & Client Care	4,039	4,358	4,319	4,364	4,352	-40	+34	-12	-6	+313	-0.14%	5,486



WTE Change by Staff Category

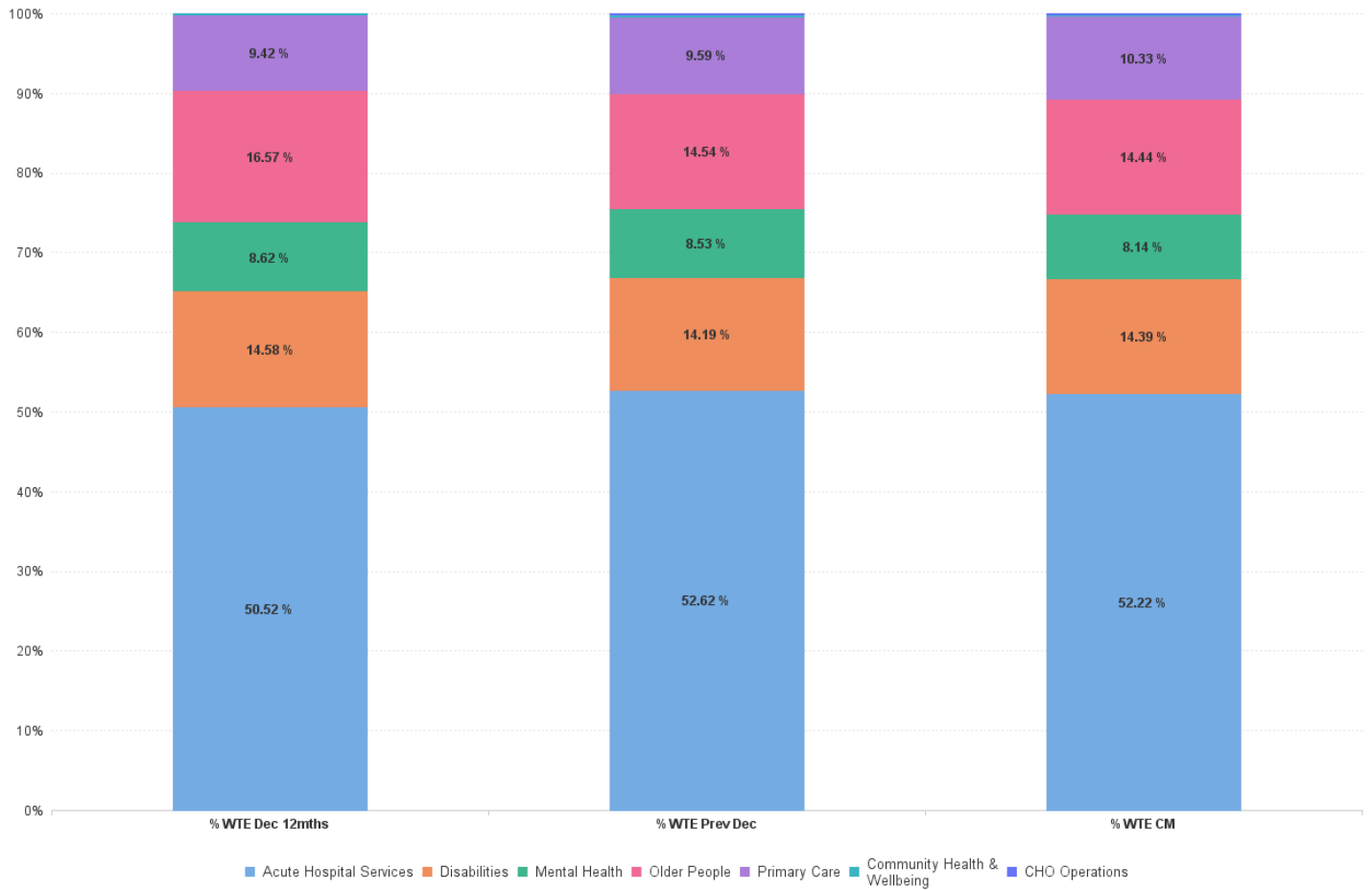
■ WTE change since DEC 2019
 ■ WTE change since DEC 2022
 ■ WTE change since DEC 2023
 ■ WTE change since OCT 2023



HSE South West by Care Group: OCT 2024

OCT 2024	WTE DEC 2019	WTE DEC 2022	WTE DEC 2023	WTE SEP 2024	WTE OCT 2024	WTE Change 2023	WTE Change 2024	WTE Change SEP 2024	WTE Change Dec 2022 to OCT 2024	WTE Change Dec 2019 to OCT 2024	% WTE Change Dec 2022 to OCT 2024	No. OCT 2024
Overall	15,829	18,109	18,929	19,214	19,203	+819	+274	-11	+1,093	+3,373	6.04%	22,655
Acute Hospital Services	7,641	9,149	9,961	10,063	10,028	+812	+67	-35	+879	+2,387	9.61%	11,358
Disabilities	2,425	2,640	2,686	2,762	2,762	+46	+76	+0	+122	+337	4.63%	3,324
Mental Health	1,499	1,562	1,615	1,566	1,564	+54	-51	-2	+2	+65	0.14%	1,747
Older People	2,919	3,000	2,752	2,769	2,773	-248	+21	+4	-227	-146	-7.58%	3,615
Primary Care	1,346	1,707	1,816	1,964	1,983	+109	+168	+19	+277	+637	16.21%	2,500
Community Health & Wellbeing		52	51	44	47	-0	-5	+3	-5	+47	-9.53%	62
CHO Operations			47	46	46	+47	-1	-0	+46	+46	-100.00%	49

% Total by Care Group



HSE South West Staff by Care Group: OCT 2024

Acute Hospital Services

OCT 2024	WTE DEC 2019	WTE DEC 2022	WTE DEC 2023	WTE SEP 2024	WTE OCT 2024	WTE Change 2023	WTE Change 2024	WTE change since DEC 2023	WTE Change Dec 2022 to OCT 2024	WTE Change Dec 2019 to OCT 2024	% WTE Change Dec 2022 to OCT 2024	No. OCT 2024
Total Acute Hospital Services	7,641	9,149	9,961	10,063	10,028	+812	+67	+67	+879	+2,387	9.61%	11,358
Consultants	335	392	454	496	506	+62	+52	+53	+115	+171	29.31%	539
Registrars	353	440	476	519	524	+37	+48	+48	+85	+171	19.30%	539
SHO/ Interns	370	430	474	483	487	+43	+13	+13	+57	+117	13.18%	492
Medical/ Dental, other	7	9	7	6	6	-2	-1	-1	-3	-1	-30.67%	12
Medical & Dental	1,066	1,270	1,411	1,504	1,524	+141	+113	+113	+254	+458	19.98%	1,582
Nurse/ Midwife Manager	624	689	771	755	750	+81	-21	-21	+61	+126	8.79%	842
Nurse/ Midwife Specialist & AN/MP	95	184	231	239	242	+47	+11	+11	+58	+147	31.25%	270
Staff Nurse/ Staff Midwife	2,268	2,673	2,962	2,984	3,000	+289	+38	+38	+327	+732	12.22%	3,447
Nursing/ Midwifery awaiting registration	3	4	4	11	21	+18	+596.0%	+17	+422.0%	+17	476.80%	39
Post-registration Nurse/ Midwife Student	29	10	9	10	10	-19	-65.5%	+1	+11.1%	+0	0.50%	10
Pre-registration Nurse/ Midwife Intern	30	36	13	72	21	-9	-30.8%	+8	+59.7%	-15	-41.82%	84
Nursing/ Midwifery Student	62	49	26	93	52	-23	+26	+26	+2	-10	4.85%	133
Nursing/ Midwifery other	9	11	14	15	17	+3	+3	+3	+6	+8	50.58%	20
Nursing & Midwifery	3,058	3,606	4,003	4,086	4,059	+396	+56	+56	+453	+1,002	12.56%	4,712
Dietitians	49	60	72	67	66	+18	+36.5%	-5	-7.3%	+6	9.93%	80
Occupational Therapists	32	60	79	71	71	+39	+121.3%	-8	-9.7%	+11	17.79%	79
Orthoptists	1	1	1	1	1	+0	+0.0%	+0	+33.3%	+0	0.00%	1
Physiotherapists	123	171	184	185	184	+61	+50.0%	+0	+0.1%	+13	7.61%	211
Podiatrists & Chiropodists	4	3	7	7	7	+3	+79.1%	-0	-0.8%	+3	114.52%	7
Speech & Language Therapists	25	48	49	47	46	+21	+81.1%	-3	-6.4%	-2	-4.56%	55
Therapy Professions	233	344	390	377	375	+47	-16	-16	+31	+141	9.01%	433
Health Science/ Diagnostics	586	669	671	672	674	+2	+3	+3	+5	+87	0.70%	784
Pharmacy	94	143	151	146	145	+8	-6	-6	+2	+51	1.71%	171
Psychologists	2	6	12	14	14	+6	+2	+2	+8	+13	137.65%	18
Social Workers	29	39	43	44	44	+4	+1	+1	+5	+15	13.03%	48
H&SC, Other	19	14	19	10	20	+5	+1	+1	+6	+1	47.06%	20
Health & Social Care Professionals	963	1,214	1,286	1,264	1,272	+72	-14	-14	+58	+309	4.76%	1,474
Management (VIII & above)	41	63	62	63	61	-0	-1	-1	-1	+20	-2.14%	62
Administrative/ Supervisory (V to VII)	199	303	366	352	352	+62	-14	-14	+49	+153	16.03%	386
Clerical (III & IV)	883	969	987	958	965	+18	-22	-22	-4	+81	-0.42%	1,093
Management & Administrative	1,123	1,335	1,415	1,372	1,378	+80	-37	-37	+43	+254	3.24%	1,541
Support	907	1,087	1,106	1,096	1,068	+19	-38	-38	-19	+161	-1.74%	1,225
Maintenance/ Technical	13	13	15	18	18	+2	+3	+3	+5	+6	37.27%	19
General Support	920	1,100	1,121	1,114	1,086	+21	-35	-35	-14	+167	-1.26%	1,244
Health Care Assistants	498	605	684	675	661	+79	-23	-23	+56	+163	9.19%	750
Care, other	13	18	42	47	48	+24	+6	+6	+30	+35	164.35%	55
Patient & Client Care	511	623	726	723	709	+102	-17	-17	+85	+198	13.67%	805



HSE South West Staff by Care Group: OCT 2024

Disabilities

OCT 2024	WTE DEC 2019	WTE DEC 2022	WTE DEC 2023	WTE SEP 2024	WTE OCT 2024	WTE Change 2023	WTE Change 2024	WTE change since DEC 2023	WTE Change Dec 2022 to OCT 2024	WTE Change Dec 2019 to OCT 2024	% WTE Change Dec 2022 to OCT 2024	No. OCT 2024
Total Disabilities	2,425	2,640	2,686	2,762	2,762	+46	+76	+76	+122	+337	4.63%	3,324
Consultants	2	2	2	2	2	+0	-0	-0	-0	+0	-1.96%	2
Medical/ Dental, other	0	0	0	0	0	+0	+0	+0	+0	+0	0.00%	1
Medical & Dental	2	2	2	2	2	+0	-0	-0	-0	+0	-1.58%	3
Nurse/ Midwife Manager	87	98	101	102	101	+3	-0	-0	+3	+13	2.90%	111
Nurse/ Midwife Specialist & AN/MP	13	13	12	10	10	-1	-2	-2	-3	-3	-19.37%	11
Staff Nurse/ Staff Midwife	306	301	299	298	293	-3	-5	-5	-8	-12	-2.57%	368
Nursing/ Midwifery awaiting registration	1					-1	-100.0%				-100.00%	
Pre-registration Nurse/ Midwife Intern	6	1	1	10	6	+0	+3.2%	+5	+519.0%	+6	797.10%	13
Nursing/ Midwifery Student	7	1	1	10	6	+0	+5	+5	+6	-1	797.10%	13
Nursing/ Midwifery other	1	1	1	1	1	+0	+0	+0	+0	+0	0.00%	1
Nursing & Midwifery	414	414	414	421	412	-0	-2	-2	-2	-2	-0.46%	504
Dietitians	3	2	3	3	3	+1	+20.0%	+0	+0.0%	+1	50.00%	3
Occupational Therapists	38	44	47	49	48	+10	+27.3%	+1	+2.9%	+5	10.89%	57
Physiotherapists	18	18	23	24	25	+6	+35.2%	+2	+9.5%	+7	41.80%	30
Speech & Language Therapists	49	42	46	45	45	-4	-7.3%	-1	-1.8%	+4	9.21%	54
Therapy Professions	108	105	119	121	122	+14	+3	+3	+17	+14	16.15%	144
Social Care	227	259	266	280	281	+8	+15	+15	+22	+54	8.66%	321
Psychologists	35	37	32	34	34	-5	+2	+2	-3	-1	-6.98%	40
Social Workers	27	28	35	33	35	+8	-1	-1	+7	+8	25.10%	40
H&SC, Other	8	7	10	9	9	+2	-1	-1	+1	+0	20.42%	9
Health & Social Care Professionals	405	435	462	476	480	+28	+18	+18	+45	+75	10.39%	554
Management (VIII & above)	22	23	27	24	25	+4	-2	-2	+2	+3	10.66%	26
Administrative/ Supervisory (V to VII)	53	72	86	91	93	+14	+7	+7	+21	+39	28.40%	103
Clerical (III & IV)	84	93	90	97	95	-4	+5	+5	+2	+11	1.66%	120
Management & Administrative	160	189	203	212	213	+14	+11	+11	+25	+54	13.00%	249
Support	140	138	83	79	78	-56	-4	-4	-60	-62	-43.30%	123
Maintenance/ Technical	10	10	11	11	11	+1	-1	-1	+1	+0	7.44%	13
General Support	150	148	94	89	89	-54	-5	-5	-59	-61	-39.90%	136
Health Care Assistants	987	1,111	1,147	1,184	1,182	+36	+35	+35	+71	+194	6.37%	1,430
Care, other	307	342	365	377	385	+23	+20	+20	+43	+77	12.51%	448
Patient & Client Care	1,295	1,453	1,512	1,561	1,566	+59	+54	+54	+114	+272	7.82%	1,878

HSE South West Staff by Care Group: OCT 2024

Mental Health

OCT 2024	WTE DEC 2019	WTE DEC 2022	WTE DEC 2023	WTE SEP 2024	WTE OCT 2024	WTE Change 2023	WTE Change 2024	WTE change since DEC 2023	WTE Change Dec 2022 to OCT 2024	WTE Change Dec 2019 to OCT 2024	% WTE Change Dec 2022 to OCT 2024	No. OCT 2024
Total Mental Health	1,499	1,562	1,615	1,566	1,564	+54	-51	-51	+2	+65	0.14%	1,747
Consultants	50	60	65	70	71	+4	+6	+6	+11	+21	17.84%	80
Registrars	46	56	51	50	50	-5	-1	-1	-6	+4	-11.34%	51
SHO/ Interns	31	42	55	58	60	+12	+5	+5	+18	+29	41.32%	62
Medical/ Dental, other	2	1	1	1	1	+0	+0	+0	+0	-1	1.04%	4
Medical & Dental	129	160	171	179	182	+11	+11	+11	+22	+53	13.71%	197
Nurse/ Midwife Manager	171	207	201	201	202	-6	+1	+1	-5	+30	-2.49%	216
Nurse/ Midwife Specialist & AN/MP	60	72	90	84	85	+17	-5	-5	+13	+25	17.75%	93
Staff Nurse/ Staff Midwife	505	479	484	446	439	+5	-45	-45	-40	-66	-8.25%	481
Nursing/ Midwifery awaiting registration	30		1			-30	-100.0%	-1	-100.0%		-100.00%	
Post-registration Nurse/ Midwife Student	1					-1	-100.0%				-100.00%	
Pre-registration Nurse/ Midwife Intern	3	7	1	22	19	+16	+535.3%	+19	+3,712.0%	+12	184.90%	44
Nursing/ Midwifery Student	34	7	2	22	19	-5	+18	+18	+12	-14	184.90%	44
Nursing/ Midwifery other				2	2		+2	+2	+2	+2	-100.00%	2
Nursing & Midwifery	770	765	776	755	747	+11	-28	-28	-17	-23	-2.29%	836
Dietitians	6	3	2	1	1	-5	-83.6%	-1	-48.7%	-2	-70.97%	1
Occupational Therapists	55	63	73	67	71	+16	+28.3%	-2	-2.7%	+8	12.60%	77
Speech & Language Therapists	13	13	13	13	12	-1	-4.6%	-1	-8.0%	-1	-3.93%	15
Therapy Professions	74	79	88	82	84	+9	-4	-4	+5	+10	6.31%	93
Social Care	4	6	3	4	4	-3	+1	+1	-2	-0	-34.82%	5
Pharmacy	2	2	1	1	1	-1	-1	-1	-2	-2	-74.58%	1
Psychologists	83	96	98	92	97	+2	-1	-1	+1	+14	0.67%	107
Social Workers	53	73	74	69	70	+1	-4	-4	-3	+17	-4.57%	82
H&SC, Other	11	18	19	18	18	+1	-1	-1	-0	+7	-0.46%	22
Health & Social Care Professionals	227	273	283	265	272	+9	-11	-11	-2	+45	-0.59%	310
Management (VIII & above)	1	3	3	2	3	-0	-0	-0	-0	+2	-13.00%	3
Administrative/ Supervisory (V to VII)	22	26	33	30	30	+7	-3	-3	+4	+8	15.41%	33
Clerical (III & IV)	87	87	106	105	105	+19	-2	-2	+18	+17	20.63%	118
Management & Administrative	111	116	142	137	138	+26	-4	-4	+22	+27	18.57%	154
Support	81	75	65	59	56	-10	-8	-8	-18	-24	-24.53%	64
Maintenance/ Technical	6	5	4	4	4	-1	+0	+0	-1	-2	-24.65%	4
General Support	87	80	68	62	60	-11	-8	-8	-20	-27	-24.53%	68
Health Care Assistants	168	162	169	162	159	+7	-10	-10	-3	-9	-1.67%	170
Care, other	7	5	6	6	5	+0	-0	-0	+0	-2	2.49%	12
Patient & Client Care	176	167	175	167	165	+8	-10	-10	-3	-11	-1.54%	182



HSE South West Staff by Care Group: OCT 2024

Older People

OCT 2024	WTE DEC 2019	WTE DEC 2022	WTE DEC 2023	WTE SEP 2024	WTE OCT 2024	WTE Change 2023	WTE Change 2024	WTE change since DEC 2023	WTE Change Dec 2022 to OCT 2024	WTE Change Dec 2019 to OCT 2024	% WTE Change Dec 2022 to OCT 2024	No. OCT 2024
Total Older People	2,919	3,000	2,752	2,769	2,773	-248	+21	+21	-227	-146	-7.58%	3,615
Consultants	1	1	1	1	1	+0	+0	+0	+0	+0	0.00%	2
Registrars	3	0				-0			-0	-3	-100.00%	
SHO/ Interns	1			1	1		+1	+1	+1	+0	-100.00%	1
Medical/ Dental, other	21	27	25	26	26	-2	+2	+2	-0	+6	-0.71%	55
Medical & Dental	26	28	26	28	29	-2	+3	+3	+1	+3	2.78%	58
Nurse/ Midwife Manager	118	109	119	124	123	+10	+4	+4	+14	+5	12.67%	133
Nurse/ Midwife Specialist & AN/MP	3	6	11	10	10	+6	-1	-1	+4	+7	73.66%	11
Staff Nurse/ Staff Midwife	515	575	513	541	545	-62	+31	+31	-31	+30	-5.31%	665
Public Health Nurse	5	6	5	4	4	-2	-0	-0	-2	-1	-34.53%	5
Nursing/ Midwifery Student	2		5	1	2	+5	-3	-3	+2	-1	-100.00%	3
Nursing & Midwifery	643	697	653	680	683	-44	+31	+31	-13	+40	-1.88%	817
Dietitians	2		2	2	2	+1	+33.3%	+1	+33.3%	+2	-100.00%	2
Occupational Therapists	17	13	10	12	12	-5	-29.7%	+2	+24.1%	-1	-5.61%	13
Physiotherapists	15	16	13	9	9	-6	-36.9%	-3	-25.3%	-6	-39.75%	11
Podiatrists & Chiroprodists	6	2	1	1	1	-6	-85.1%	-1	-34.0%	-1	-36.18%	1
Speech & Language Therapists	4	6	4	3	3	-0	-9.7%	-1	-17.6%	-3	-46.52%	4
Therapy Professions	44	37	30	27	28	-7	-2	-2	-9	-16	-23.33%	31
Health Science/ Diagnostics	1	1	1	1	1	+0	+0	+0	+0	+0	0.00%	2
Social Care	2	1	1	1	1	+0	+0	+0	+0	-0	0.79%	2
Pharmacy	3	5	4	4	5	-0	+0	+0	+0	+2	5.97%	10
Social Workers	10	9				-9			-9	-10	-100.00%	
H&SC, Other			5	4	3	+5	-1	-1	+3	+3	-100.00%	4
Health & Social Care Professionals	60	53	41	38	39	-12	-3	-3	-14	-21	-26.94%	49
Management (VIII & above)	13	19	20	16	16	+1	-3	-3	-3	+4	-14.47%	17
Administrative/ Supervisory (V to VII)	17	29	39	47	47	+9	+8	+8	+17	+30	58.61%	49
Clerical (III & IV)	128	130	128	127	128	-2	-0	-0	-2	-1	-1.60%	150
Management & Administrative	158	178	186	190	191	+8	+4	+4	+12	+33	6.94%	216
Support	101	124	120	116	115	-3	-5	-5	-9	+14	-7.12%	129
Maintenance/ Technical	6	5	3	3	3	-2	+0	+0	-2	-3	-40.00%	3
General Support	107	129	123	119	118	-5	-5	-5	-11	+11	-8.39%	132
Health Care Assistants	781	814	753	768	767	-61	+14	+14	-48	-14	-5.84%	899
Home Help	1,113	1,068	932	909	909	-136	-23	-23	-158	-204	-14.82%	1,396
Care, other	31	34	37	37	37	+3	+0	+0	+3	+7	10.15%	48
Patient & Client Care	1,925	1,916	1,722	1,714	1,714	-194	-9	-9	-202	-212	-10.56%	2,343

HSE South West Staff by Care Group: OCT 2024

Primary Care

OCT 2024	WTE DEC 2019	WTE DEC 2022	WTE DEC 2023	WTE SEP 2024	WTE OCT 2024	WTE Change 2023	WTE Change 2024	WTE change since DEC 2023	WTE Change Dec 2022 to OCT 2024	WTE Change Dec 2019 to OCT 2024	% WTE Change Dec 2022 to OCT 2024	No. OCT 2024
Total Primary Care	1,346	1,707	1,816	1,964	1,983	+109	+168	+168	+277	+637	16.21%	2,500
Consultants	3	7	8	10	10	+1	+3	+3	+4	+8	51.91%	15
Registrars	55	40	60	75	76	+20	+15	+15	+36	+21	90.78%	78
SHO/ Interns	6	4	3	5	11	-1	+8	+8	+7	+5	175.00%	11
Medical/ Dental, other	88	110	106	95	99	-4	-7	-7	-11	+11	-9.75%	173
Medical & Dental	152	160	177	185	196	+17	+19	+19	+36	+45	22.27%	277
Nurse/ Midwife Manager	56	72	70	81	84	-3	+14	+14	+12	+28	16.13%	93
Nurse/ Midwife Specialist & AN/MP	4	14	33	55	56	+18	+23	+23	+41	+52	286.32%	67
Staff Nurse/ Staff Midwife	119	177	192	238	234	+16	+42	+42	+58	+115	32.86%	331
Public Health Nurse	211	210	204	210	215	-6	+11	+11	+5	+4	2.51%	281
Post-registration Nurse/ Midwife Student	17	11	20	10	18	+0	+1.9%	-2	-12.2%	+7	60.46%	18
Nursing/ Midwifery Student	17	11	20	10	18	+9	-2	-2	+7	+0	60.46%	18
Nursing/ Midwifery other				1	1		+1	+1	+1	+1	-100.00%	1
Nursing & Midwifery	408	484	518	595	608	+34	+90	+90	+124	+200	25.61%	791
Dietitians	18	28	34	32	35	+17	+94.8%	+1	+2.3%	+6	21.39%	42
Occupational Therapists	59	108	110	106	104	+45	+75.6%	-6	-5.4%	-4	-3.58%	120
Orthoptists	3	1	1	1	1	-3	-84.8%	+0	+0.0%	-1	-50.00%	1
Physiotherapists	73	93	98	99	99	+26	+35.2%	+0	+0.5%	+6	6.49%	119
Podiatrists & Chiroprodists		14	11	12	12	+12		+0	+1.0%	-3	-17.99%	13
Speech & Language Therapists	69	83	87	85	83	+14	+20.8%	-4	-4.9%	-0	-0.02%	98
Therapy Professions	222	327	341	336	332	+14	-9	-9	+5	+110	1.58%	393
Health Science/ Diagnostics	11	13	12	11	11	-1	-1	-1	-2	+0	-15.33%	13
Social Care	8	7	7	7	7	+1	+0	+0	+1	-0	11.70%	8
Pharmacy	3	2	5	8	8	+3	+3	+3	+6	+5	341.62%	9
Psychologists	20	23	26	17	17	+2	-9	-9	-6	-3	-26.46%	20
Social Workers	24	37	44	48	49	+7	+5	+5	+12	+25	33.51%	53
H&SC, Other	41	39	41	42	43	+2	+2	+2	+4	+2	11.16%	51
Health & Social Care Professionals	329	447	475	470	467	+28	-8	-8	+20	+138	4.53%	547
Management (VIII & above)	37	44	44	47	46	-0	+2	+2	+2	+9	3.92%	47
Administrative/ Supervisory (V to VII)	68	114	133	120	122	+19	-11	-11	+8	+54	7.37%	129
Clerical (III & IV)	205	255	284	299	298	+29	+13	+13	+43	+93	16.82%	371
Management & Administrative	310	412	461	466	465	+48	+5	+5	+53	+156	12.84%	547
Support	16	16	18	65	62	+1	+44	+44	+46	+47	278.75%	79
Maintenance/ Technical		1		2	3	-1	+3	+3	+2	+3	200.00%	3
General Support	16	17	18	67	65	+0	+47	+47	+48	+50	274.23%	82
Health Care Assistants	17	47	33	58	56	-14	+23	+23	+9	+39	19.23%	79
Home Help	10	8	12	11	11	+3	-1	-1	+2	+0	26.71%	23
Care, other	105	130	122	113	115	-8	-7	-7	-15	+10	-11.79%	154
Patient & Client Care	132	185	166	182	181	-19	+15	+15	-4	+49	-2.19%	256

HSE South West Staff by Care Group: OCT 2024

Community Health & Wellbeing

OCT 2024	WTE DEC 2019	WTE DEC 2022	WTE DEC 2023	WTE SEP 2024	WTE OCT 2024	WTE Change 2023	WTE Change 2024	WTE change since DEC 2023	WTE Change Dec 2022 to OCT 2024	WTE Change Dec 2019 to OCT 2024	% WTE Change Dec 2022 to OCT 2024	No. OCT 2024
Total Community Health & Wellbeing		52	51	44	47	-0	-5	-5	-5	+47	-9.53%	62
Medical/ Dental, other		2				-2			-2		-100.00%	
Medical & Dental		2				-2			-2		-100.00%	
Nurse/ Midwife Manager		3	3	2	3	-0	-0	-0	-0	+3	-11.24%	3
Nursing & Midwifery		3	3	2	3	-0	-0	-0	-0	+3	-11.24%	3
Therapy Professions		2	2	2	2	-1	-0	-0	-1	+2	-34.60%	2
H&SC, Other		9	5	1	1	-3	-4	-4	-7	+1	-85.10%	11
Health & Social Care Professionals		11	7	3	3	-4	-4	-4	-8	+3	-74.18%	13
Management (VIII & above)		1	2	2	2	+1	+0	+0	+1	+2	100.00%	2
Administrative/ Supervisory (V to VII)		12	14	14	14	+2	+0	+0	+2	+14	14.55%	15
Clerical (III & IV)		7	8	7	7	+1	-1	-1	-1	+7	-7.50%	7
Management & Administrative		21	24	22	23	+3	-1	-1	+2	+23	10.88%	24
Maintenance/ Technical		1				-1			-1		-100.00%	
General Support		1				-1			-1		-100.00%	
Health Care Assistants		0				-0			-0		-100.00%	
Care, other		14	17	17	18	+4	+0	+0	+4	+18	31.17%	22
Patient & Client Care		14	17	17	18	+4	+0	+0	+4	+18	28.79%	22



HSE South West Staff by Care Group: OCT 2024

CHO Operations

OCT 2024	WTE DEC 2019	WTE DEC 2022	WTE DEC 2023	WTE SEP 2024	WTE OCT 2024	WTE Change 2023	WTE Change 2024	WTE change since DEC 2023	WTE Change Dec 2022 to OCT 2024	WTE Change Dec 2019 to OCT 2024	% WTE Change Dec 2022 to OCT 2024	No. OCT 2024
Total CHO Operations			47	46	46	+47	-1	-1	+46	+46	-100.00%	49
Nurse/ Midwife Manager			4	4	4	+4	-0	-0	+4	+4	-100.00%	5
Nurse/ Midwife Specialist & AN/MP			1	1	1	+1	-0	-0	+1	+1	-100.00%	1
Nursing & Midwifery			5	5	5	+5	-0	-0	+5	+5	-100.00%	6
Pharmacy			2	2	2	+2	+0	+0	+2	+2	-100.00%	2
Social Workers			18	17	17	+18	-1	-1	+17	+17	-100.00%	18
Health & Social Care Professionals			20	19	19	+20	-1	-1	+19	+19	-100.00%	20
Management (VIII & above)			3	3	3	+3	+0	+0	+3	+3	-100.00%	3
Administrative/ Supervisory (V to VII)			13	11	12	+13	-1	-1	+12	+12	-100.00%	12
Clerical (III & IV)			6	7	7	+6	+2	+2	+7	+7	-100.00%	8
Management & Administrative			22	21	22	+22	+0	+0	+22	+22	-100.00%	23

HSE South West Report by HSE/S38: OCT 2024

OCT 2024	WTE DEC 2019	WTE DEC 2022	WTE DEC 2023	WTE SEP 2024	WTE OCT 2024	WTE Change 2023	WTE Change 2024	WTE change since DEC 2023	WTE Change Dec 2022 to OCT 2024	WTE Change Dec 2019 to OCT 2024	% WTE Change Dec 2022 to OCT 2024	No. OCT 2024
Overall	15,829	18,109	18,929	19,214	19,203	+819	+274	+274	+1,093	+3,373	6.04%	22,655
Health Service Executive	11,621	13,401	14,013	13,881	13,837	+611	-175	-175	+436	+2,217	3.25%	16,249
Section 38 Hospitals	1,959	2,279	2,440	2,467	2,502	+161	+62	+62	+223	+543	9.77%	2,842
Section 38 Voluntary Agencies	2,249	2,429	2,476	2,866	2,864	+47	+387	+387	+434	+614	17.88%	3,564



HSE South West : OCT 2024

Health Service Executive

OCT 2024	WTE DEC 2019	WTE DEC 2022	WTE DEC 2023	WTE SEP 2024	WTE OCT 2024	WTE Change 2023	WTE Change 2024	WTE change since DEC 2023	WTE Change Dec 2022 to OCT 2024	WTE Change Dec 2019 to OCT 2024	% WTE Change Dec 2022 to OCT 2024	No. OCT 2024
Total Health Service Executive	11,621	13,401	14,013	13,881	13,837	+611	-175	-175	+436	+2,217	3.25%	16,249
Consultants	313	366	428	470	476	+62	+47	+47	+109	+162	29.87%	513
Registrars	378	452	489	541	547	+36	+59	+59	+95	+169	21.01%	563
SHO/ Interns	304	355	416	432	435	+61	+19	+19	+80	+131	22.59%	442
Medical/ Dental, other	106	129	121	114	116	-7	-5	-5	-12	+11	-9.67%	197
Medical & Dental	1,101	1,302	1,454	1,556	1,574	+152	+120	+120	+272	+473	20.90%	1,715
Nurse/ Midwife Manager	787	885	969	953	943	+83	-26	-26	+58	+156	6.52%	1,038
Nurse/ Midwife Specialist & AN/MP	142	237	315	313	316	+78	+1	+1	+79	+174	33.42%	357
Staff Nurse/ Staff Midwife	2,925	3,341	3,531	3,513	3,518	+190	-13	-13	+177	+593	5.30%	4,100
Public Health Nurse	216	216	209	215	219	-8	+11	+11	+3	+4	1.41%	286
<i>Nursing/ Midwifery awaiting registration</i>	33	2	8	3	8	+6	+1	+1	+6	-24	397.53%	17
<i>Post-registration Nurse/ Midwife Student</i>	48	21	29	20	28	+8	-1	-1	+7	-21	31.91%	28
<i>Pre-registration Nurse/ Midwife Intern</i>	33	43	13	88	40	-30	+27	+27	-3	+7	-7.52%	128
Nursing/ Midwifery Student	114	66	50	111	75	-16	+26	+26	+10	-38	15.05%	173
Nursing/ Midwifery other	4	5	7	10	11	+2	+4	+4	+6	+7	125.10%	13
Nursing & Midwifery	4,188	4,750	5,080	5,115	5,083	+330	+3	+3	+333	+895	7.01%	5,967
<i>Dietitians</i>	62	80	95	88	87	+15	-8	-8	+7	+25	9.16%	103
<i>Occupational Therapists</i>	159	230	255	239	239	+25	-17	-17	+8	+79	3.59%	268
<i>Orthoptists</i>	4	2	1	1	1	-1	-1	-1	-2	-4	-75.00%	1
<i>Physiotherapists</i>	173	232	243	235	234	+11	-9	-9	+3	+61	1.10%	274
<i>Podiatrists & Chiropodists</i>	9	18	18	18	17	+0	-0	-0	-0	+8	-1.31%	19
<i>Speech & Language Therapists</i>	111	148	149	138	135	+1	-14	-14	-13	+24	-8.90%	159
Therapy Professions	519	709	761	719	713	+52	-48	-48	+3	+194	0.45%	824
Health Science/ Diagnostics	486	550	557	549	546	+7	-11	-11	-3	+60	-0.60%	624
Social Care	39	44	37	38	37	-7	-0	-0	-8	-2	-17.20%	42
Pharmacy	70	108	117	111	112	+8	-5	-5	+3	+42	2.94%	134
Psychologists	107	127	134	121	126	+8	-8	-8	-1	+19	-0.51%	143
Social Workers	105	148	166	158	159	+18	-7	-7	+11	+54	7.63%	179
H&SC, Other	71	78	93	80	90	+15	-3	-3	+12	+19	15.88%	111
Health & Social Care Professionals	1,397	1,764	1,865	1,776	1,782	+101	-83	-83	+18	+385	1.05%	2,057
Management (VIII & above)	84	116	118	111	109	+3	-9	-9	-7	+26	-5.87%	112
Administrative/ Supervisory (V to VII)	242	396	505	478	482	+109	-23	-23	+86	+240	21.63%	520
Clerical (III & IV)	989	1,112	1,154	1,102	1,103	+42	-51	-51	-9	+113	-0.85%	1,274
Management & Administrative	1,315	1,624	1,778	1,690	1,694	+153	-84	-84	+69	+379	4.28%	1,906
Support	954	1,120	1,122	1,104	1,073	+2	-48	-48	-47	+120	-4.18%	1,221
Maintenance/ Technical	16	16	11	11	11	-4	+0	+0	-4	-5	-27.22%	12
General Support	970	1,136	1,133	1,115	1,085	-3	-48	-48	-51	+115	-4.49%	1,233
Health Care Assistants	1,403	1,583	1,580	1,531	1,519	-3	-61	-61	-64	+116	-4.07%	1,719
Home Help	1,124	1,076	944	920	920	-132	-24	-24	-156	-204	-14.50%	1,419
Care, other	123	166	180	177	181	+13	+1	+1	+15	+58	8.80%	233
Patient & Client Care	2,650	2,825	2,703	2,628	2,620	-122	-84	-84	-206	-30	-7.28%	3,371



Section 38 Hospitals

OCT 2024	WTE DEC 2019	WTE DEC 2022	WTE DEC 2023	WTE SEP 2024	WTE OCT 2024	WTE Change 2023	WTE Change 2024	WTE change since DEC 2023	WTE Change Dec 2022 to OCT 2024	WTE Change Dec 2019 to OCT 2024	% WTE Change Dec 2022 to OCT 2024	No. OCT 2024
Total Section 38 Hospitals	1,959	2,279	2,440	2,467	2,502	+161	+62	+62	+223	+543	9.77%	2,842
Consultants	77	91	96	103	108	+6	+12	+12	+17	+31	18.85%	117
Registrars	73	80	96	94	96	+16	-0	-0	+15	+22	19.02%	97
SHO/ Interns	98	118	113	110	113	-5	+0	+0	-5	+15	-4.16%	113
Medical & Dental	249	289	305	307	317	+16	+11	+11	+28	+68	9.51%	327
Nurse/ Midwife Manager	195	209	211	205	211	+3	-1	-1	+2	+16	0.82%	242
Nurse/ Midwife Specialist & AN/MP	21	40	50	52	54	+11	+4	+4	+14	+33	35.94%	57
Staff Nurse/ Staff Midwife	504	593	656	651	657	+63	+1	+1	+64	+153	10.86%	751
Nursing/ Midwifery Student	2	2	3	15	14	+1	+12	+12	+12	+12	616.00%	25
Nursing/ Midwifery other	6	6	7	7	8	+1	+1	+1	+2	+2	25.98%	9
Nursing & Midwifery	727	850	927	931	944	+78	+17	+17	+94	+217	11.10%	1,084
Therapy Professions	73	93	101	102	106	+7	+5	+5	+12	+32	13.27%	128
Health Science/ Diagnostics	110	132	125	135	139	-7	+14	+14	+7	+29	5.21%	173
Pharmacy	32	43	47	46	46	+4	-1	-1	+3	+13	5.92%	55
Psychologists	2	2	2	3	3	+0	+1	+1	+1	+1	40.00%	3
Social Workers	11	10	13	14	14	+3	+1	+1	+4	+3	35.47%	15
H&SC, Other	4	3	2	1	1	-1	-1	-1	-2	-3	-66.67%	1
Health & Social Care Professionals	232	284	289	301	308	+6	+19	+19	+24	+76	8.57%	375
Management (VIII & above)	15	20	23	24	24	+3	+1	+1	+4	+9	20.00%	24
Administrative/ Supervisory (V to VII)	81	111	117	115	114	+6	-3	-3	+4	+34	3.19%	128
Clerical (III & IV)	309	335	365	376	382	+29	+18	+18	+47	+73	14.03%	424
Management & Administrative	405	466	505	514	521	+39	+16	+16	+55	+116	11.71%	576
Support	160	189	190	187	187	+2	-3	-3	-2	+27	-1.02%	226
Maintenance/ Technical	10	11	12	15	15	+1	+3	+3	+4	+5	36.36%	15
General Support	170	200	202	202	202	+3	-0	-0	+2	+32	1.04%	241
Health Care Assistants	174	188	196	198	196	+9	+0	+0	+9	+23	4.71%	223
Care, other	3	3	15	14	14	+11	-0	-0	+11	+12	346.42%	16
Patient & Client Care	177	191	211	213	211	+20	-0	-0	+20	+34	10.46%	239



Section 38 Voluntary Agencies

OCT 2024	WTE DEC 2019	WTE DEC 2022	WTE DEC 2023	WTE SEP 2024	WTE OCT 2024	WTE Change 2023	WTE Change 2024	WTE change since DEC 2023	WTE Change Dec 2022 to OCT 2024	WTE Change Dec 2019 to OCT 2024	% WTE Change Dec 2022 to OCT 2024	No. OCT 2024
Total Section 38 Voluntary Agencies	2,249	2,429	2,476	2,866	2,864	+47	+387	+387	+434	+614	17.88%	3,564
Consultants		4	4	7	7	+0	+3	+3	+3	+7	60.53%	8
Registrars	5	3	3	9	7	-0	+5	+5	+4	+2	136.67%	8
SHO/ Interns	6	4	3	5	11	-1	+8	+8	+7	+5	175.00%	11
Medical/ Dental, other	13	20	18	15	17	-2	-1	-1	-3	+4	-13.88%	48
Medical & Dental	24	31	28	36	42	-3	+14	+14	+11	+17	35.53%	75
Nurse/ Midwife Manager	75	85	88	111	112	+3	+24	+24	+28	+38	32.73%	123
Nurse/ Midwife Specialist & AN/MP	12	13	12	34	34	-1	+22	+22	+21	+22	161.64%	39
Staff Nurse/ Staff Midwife	284	271	262	342	336	-8	+74	+74	+65	+52	24.17%	441
Nursing/ Midwifery Student	6		1	10	6	+1	+5	+5	+6	+0	-100.00%	13
Nursing/ Midwifery other	1	1	1	2	2	+0	+1	+1	+1	+1	100.00%	2
Nursing & Midwifery	378	369	364	498	491	-5	+126	+126	+121	+113	32.85%	618
Therapy Professions	89	90	108	124	124	+17	+16	+16	+33	+35	36.68%	144
Health Science/ Diagnostics	2	2	2	1	1	+0	-1	-1	-1	-1	-46.50%	2
Social Care	201	228	241	254	257	+13	+16	+16	+29	+56	12.60%	294
Pharmacy				3	3		+3	+3	+3	+3	-100.00%	4
Psychologists	31	33	31	33	33	-2	+2	+2	-0	+2	-0.18%	39
Social Workers	27	28	35	40	41	+8	+6	+6	+13	+14	48.60%	47
H&SC, Other	4	5	3	3	3	-2	-0	-0	-2	-1	-45.59%	5
Health & Social Care Professionals	354	386	420	458	462	+34	+42	+42	+75	+108	19.51%	535
Management (VIII & above)	15	17	19	23	23	+2	+4	+4	+6	+8	38.27%	24
Administrative/ Supervisory (V to VII)	38	51	61	73	74	+10	+13	+13	+23	+36	45.74%	79
Clerical (III & IV)	89	93	90	121	118	-3	+28	+28	+25	+29	27.23%	169
Management & Administrative	142	161	170	217	216	+10	+45	+45	+55	+73	34.22%	272
Support	130	131	80	122	120	-52	+40	+40	-11	-10	-8.70%	173
Maintenance/ Technical	9	9	10	12	13	+1	+2	+2	+4	+3	41.83%	15
General Support	139	140	90	134	133	-50	+43	+43	-8	-7	-5.48%	188
Health Care Assistants	875	969	1,010	1,118	1,110	+41	+100	+100	+140	+234	14.50%	1,386
Care, other	336	373	394	405	412	+21	+18	+18	+39	+76	10.48%	490
Patient & Client Care	1,212	1,342	1,404	1,523	1,522	+62	+118	+118	+180	+310	13.38%	1,876



HSE South West by 38 Hospitals & Voluntary Agencies OCT 2024

OCT 2024	WTE DEC 2019	WTE DEC 2022	WTE DEC 2023	WTE SEP 2024	WTE OCT 2024	WTE Change 2023	WTE Change 2024	WTE Change SEP 2024	WTE Change Dec 2022 to OCT 2024	WTE Change Dec 2019 to OCT 2024	% WTE Change Dec 2022 to OCT 2024	No. OCT 2024
Overall	4,208	4,708	4,916	5,333	5,365	+208	+449	+32	+657	+1,157	13.96%	6,406
Mercy University Hospital	1,173	1,435	1,532	1,504	1,507	+97	-25	+3	+72	+334	4.99%	1,684
South Infirmary-Victoria University Hosp	787	844	908	963	995	+64	+87	+32	+151	+209	17.91%	1,158
St. John of God Kerry	315	321	324	339	332	+2	+8	-7	+10	+16	3.15%	407
Bros. of Charity Southern	740	827	871	894	898	+43	+27	+4	+71	+157	8.53%	1,123
Cope Foundation	1,091	1,163	1,168	1,215	1,212	+4	+45	-3	+49	+122	4.22%	1,445
Cork Dental Hospital	103	117	114	102	99	-3	-15	-2	-18	-4	-15.27%	177
Marymount University Hospital & Hospice				247	253		+253	+6	+253	+253	-100.00%	315
Marymount Uni Hosp & Hospice OP				70	69		+69	-0	+69	+69	-100.00%	97



HSE South West Employment Report by Grade Group: OCT 2024

OCT 2024	WTE DEC 2019	WTE DEC 2022	WTE DEC 2023	WTE SEP 2024	WTE OCT 2024	WTE Change 2023	WTE Change 2024	WTE change since DEC 2023	WTE Change Dec 2022 to OCT 2024	WTE Change Dec 2019 to OCT 2024	% WTE Change Dec 2022 to OCT 2024	No. OCT 2024
Overall	15,829	18,109	18,929	19,214	19,203	+819	+274	+274	+1,093	+3,373	6.04%	22,655
Consultant Anaesthesia	55	52	61	66	68	+9	+7	+7	+16	+12	30.11%	70
Consultant Dentistry	2	5	5	5	5	+0	+0	+0	+1	+3	10.42%	6
Consultant Emergency Medicine	10	15	20	23	24	+5	+4	+4	+9	+14	58.93%	24
Consultant Intensive Care Medicine			1	1	1	+1	+0	+0	+1	+1	-100.00%	1
Consultant Medicine	99	135	157	171	175	+22	+19	+19	+40	+76	30.00%	190
Consultant Obstetrics & Gynaecology	19	23	26	32	32	+4	+6	+6	+9	+13	40.20%	34
Consultant Paediatrics	20	25	30	33	33	+5	+3	+3	+8	+13	31.65%	37
Consultant Pathology	30	32	36	37	38	+4	+2	+2	+6	+8	18.66%	42
Consultant Psychiatry	51	61	67	73	74	+6	+7	+7	+13	+23	20.81%	83
Consultant Radiology	34	38	40	47	48	+3	+7	+7	+10	+14	26.80%	52
Consultant Surgery	70	76	86	91	93	+9	+7	+7	+17	+23	22.01%	99
Consultants	390	461	529	579	590	+68	+61	+61	+129	+200	27.97%	638
Registrar	297	333	382	422	429	+48	+47	+47	+96	+132	28.80%	441
Senior Registrar	26	30	31	32	32	+0	+2	+2	+2	+6	6.38%	33
Specialist Registrar	133	172	175	190	189	+3	+14	+14	+17	+55	9.60%	194
Registrars	457	535	587	644	650	+52	+63	+63	+114	+193	21.36%	668
Interns	119	143	135	136	137	-8	+2	+2	-6	+18	-4.01%	137
Senior House Officer	290	334	397	411	422	+63	+25	+25	+88	+133	26.33%	429
SHO/ Interns	409	477	531	547	559	+55	+28	+28	+82	+151	17.25%	566
Dentists	62	69	71	62	66	+1	-5	-5	-4	+4	-5.08%	117
Other Medical	56	79	68	67	67	-10	-1	-1	-12	+11	-14.77%	128
Medical/ Dental, other	119	148	139	128	133	-9	-6	-6	-15	+14	-10.22%	245
Medical & Dental	1374	1622	1787	1899	1932	+165	+145	+145	+311	+559	19.15%	2,117
Clinical Nurse/ Midwife Manager 1	187	186	184	181	186	-2	+3	+3	+1	-1	0.31%	214
Clinical Nurse/ Midwife Manager 2	622	722	785	785	777	+63	-8	-8	+55	+155	7.58%	869
Clinical Nurse/ Midwife Manager 3	89	92	99	104	102	+7	+3	+3	+10	+13	10.91%	106
Director Nursing/Midwifery, Assistant	115	126	145	147	149	+19	+4	+4	+23	+34	18.03%	161
Director of Nursing/Midwifery	43	53	55	52	51	+2	-3	-3	-1	+8	-1.96%	53
Nurse/ Midwife Manager	1,057	1,179	1,268	1,269	1,266	+89	-2	-2	+87	+209	7.39%	1,403
Advanced Nurse/ Midwife Practitioner	23	55	66	79	79	+11	+13	+13	+24	+57	44.51%	83
Adv. Nurse/ Midwife, Candidate		18	53	42	42	+35	-11	-11	+24	+42	130.41%	44
Clinical Nurse/ Midwife Spec., Candidate				4	5		+5	+5	+5	+5	-100.00%	5
Clinical Nurse/ Midwife Specialist	153	217	258	275	278	+42	+19	+19	+61	+125	28.31%	321
Nurse/ Midwife Specialist & AN/MP	176	290	378	399	404	+88	+27	+27	+114	+229	39.52%	453
Staff Midwives	241	231	224	218	219	-7	-5	-5	-11	-21	-4.96%	273
Staff Nurse [Intellectual Disability]	87	152	168	182	177	+16	+8	+8	+25	+90	16.26%	224
Staff Nurse [Psychiatric]	469	447	456	421	415	+9	-41	-41	-32	-54	-7.17%	456
Staff Nurses [General/ Children's]	2,917	3,375	3,601	3,684	3,701	+226	+100	+100	+326	+784	9.65%	4,339
Staff Nurse/ Staff Midwife	3,713	4,205	4,450	4,505	4,512	+245	+62	+62	+307	+798	7.30%	5,292
Public Health Nurse	216	216	209	215	219	-8	+11	+11	+3	+4	1.41%	286
Public Health Nurse	216	216	209	215	219	-8	+11	+11	+3	+4	1.41%	286
Nursing/ Midwifery awaiting registration	35	4	10	12	22	+6	+13	+13	+19	-12	518.23%	42
Post-registration Nurse/ Midwife Student	48	21	29	20	28	+8	-1	-1	+7	-21	31.91%	28
Pre-registration Nurse/ Midwife Intern	39	43	15	104	46	-29	+32	+32	+3	+7	6.85%	141
Nursing/ Midwifery Student	122	68	53	136	96	-15	+43	+43	+28	-26	41.99%	211
Nursing Education/Clinical	9	12	15	19	21	+3	+6	+6	+9	+12	71.15%	24
Other Nursing/ Midwifery	1									-1	-100.00%	
Nursing/ Midwifery other	10	12	15	19	21	+3	+6	+6	+9	+11	71.15%	24
Nursing & Midwifery	5293	5969	6372	6544	6518	+402	+146	+146	+548	+1,225	9.19%	7,669
Dietitians	76	97	113	107	108	+17	-5	-5	+12	+32	12.25%	130
Occupational Therapists	201	287	318	306	306	+31	-12	-12	+19	+105	6.54%	346
Orthoptists	4	2	1	2	2	-1	+0	+0	-1	-3	-25.00%	2
Physiotherapists	229	297	317	318	317	+20	-0	-0	+20	+88	6.78%	371
Podiatrists & Chiroprodists	10	19	19	20	19	+1	-0	-0	+0	+9	2.10%	21



OCT 2024	WTE DEC 2019	WTE DEC 2022	WTE DEC 2023	WTE SEP 2024	WTE OCT 2024	WTE Change 2023	WTE Change 2024	WTE change since DEC 2023	WTE Change Dec 2022 to OCT 2024	WTE Change Dec 2019 to OCT 2024	% WTE Change Dec 2022 to OCT 2024	No. OCT 2024
Overall	15,829	18,109	18,929	19,214	19,203	+819	+274	+274	+1,093	+3,373	6.04%	22,655
Speech & Language Therapists	160	192	200	193	190	+8	-10	-10	-2	+30	-0.99%	226
Therapy Professions	681	893	969	945	942	+76	-27	-27	+49	+261	5.46%	1,096
Audiology	11	14	12	12	12	-2	+0	+0	-2	+1	-15.46%	14
Biochemists	5	6	9	7	7	+3	-2	-2	+1	+2	13.00%	7
Cardiac Physiologists	20	24	21	22	21	-3	+0	+0	-3	+1	-11.04%	24
Clinical Engineering	19	21	25	25	25	+4	+1	+1	+4	+6	21.60%	26
Dosimetrists	8	10	10	11	10	+0	+1	+1	+1	+2	9.29%	13
E.C.G. Technicians	1	1				-1			-1	-1	-100.00%	
Gastrointestinal Physiologists			2	2	2	+2	+0	+0	+2	+2	-100.00%	2
Medical Science	254	274	281	283	283	+6	+2	+2	+8	+29	3.01%	324
Neuro-Physiologists	10	11	6	6	7	-5	+0	+0	-5	-4	-41.65%	8
Perfusionists	4	3	3	1	1	+0	-2	-2	-2	-4	-71.65%	1
Phlebotomists	34	45	44	42	42	-1	-2	-2	-3	+8	-6.72%	64
Physicists	23	30	33	35	35	+3	+2	+2	+5	+13	16.61%	37
Radiation Therapists	41	36	37	39	41	+1	+4	+4	+6	+1	15.61%	50
Radiographers	162	203	197	195	195	-6	-3	-3	-9	+33	-4.20%	224
Respiratory Physiologists	6	5	4	4	4	-1	-0	-0	-1	-2	-17.12%	4
Vascular Physiologists		1	1	1	1	+0	+0	+0	+0	+1	29.87%	1
Health Science/ Diagnostics	598	683	684	685	686	+1	+2	+2	+3	+88	0.39%	799
Social Care	240	272	278	292	293	+6	+15	+15	+21	+53	7.77%	336
Social Care	240	272	278	292	293	+6	+15	+15	+21	+53	7.77%	336
Pharmacists	60	95	103	100	100	+8	-3	-3	+5	+40	5.70%	121
Pharmacy Technicians	42	57	60	60	60	+3	-0	-0	+3	+18	6.10%	72
Pharmacy	102	151	163	160	160	+12	-3	-3	+9	+58	5.85%	193
Psychologists	139	162	167	157	162	+6	-6	-6	+0	+22	0.06%	185
Psychologists	139	162	167	157	162	+6	-6	-6	+0	+22	0.06%	185
Social Workers	143	186	214	213	214	+28	+0	+0	+28	+71	15.32%	241
Social Workers	143	186	214	213	214	+28	+0	+0	+28	+71	15.32%	241
Counsellor Therapists	41	43	50	51	52	+8	+2	+2	+9	+11	21.60%	57
Dental Hygienists	8	9	9	8	7	-1	-1	-1	-2	-1	-19.87%	12
HSCP Trainees/Students	17	10	16	6	16	+6	+0	+0	+6	-1	64.10%	16
Other Health & Social Care	13	12	15	13	12	+3	-2	-2	+1	-0	5.62%	15
Play Therapists/ Specialists	1	3	3	5	5	+0	+2	+2	+2	+4	44.28%	6
Vaccinators		9	5	1	1	-4	-4	-4	-8	+1	-85.54%	11
H&SC, Other	79	86	98	83	94	+12	-4	-4	+8	+15	9.58%	117
Health & Social Care Professionals	1983	2434	2574	2535	2552	+141	-23	-23	+118	+568	4.86%	2,967
CEO/Chief Officer	5	5	5	6	6	+0	+1	+1	+1	+1	22.20%	6
General Managers	35	44	44	40	41	+0	-3	-3	-3	+6	-6.51%	42
National Director, Assistant	5	8	8	8	7	+0	-1	-1	-1	+2	-12.50%	7
Other Executives	12	13	18	15	16	+5	-2	-2	+3	+4	21.38%	16
VIII	57	83	86	89	87	+2	+1	+1	+4	+30	4.38%	89
Management (VIII & above)	114	153	160	158	156	+8	-4	-4	+4	+43	2.40%	160
Middle Management (V-VII)	360	558	683	665	670	+126	-13	-13	+112	+310	20.16%	727
Administrative/ Supervisory (V to VII)	360	558	683	665	670	+126	-13	-13	+112	+310	20.16%	727
General Administrative (III & IV)	1,388	1,541	1,609	1,599	1,604	+68	-5	-5	+63	+216	4.09%	1,867
Clerical (III & IV)	1,388	1,541	1,609	1,599	1,604	+68	-5	-5	+63	+216	4.09%	1,867
Management & Administrative	1862	2251	2452	2422	2430	+201	-22	-22	+179	+568	7.95%	2,754
Catering	131	130	295	380	382	+164	+87	+87	+252	+251	192.90%	438
Household Services	673	774	596	543	525	-179	-71	-71	-250	-149	-32.25%	647
Other Labs & Associated	31	69	73	66	61	+4	-12	-12	-8	+30	-11.58%	70
Other Support	156	179	120	114	114	-58	-6	-6	-65	-42	-36.10%	135
Portering	252	287	307	310	298	+20	-9	-9	+10	+46	3.64%	330
Support	1,244	1,440	1,391	1,413	1,380	-49	-12	-12	-60	+136	-4.18%	1,620
Maintenance	33	29	28	31	32	-2	+4	+4	+3	-1	8.51%	35
Technical Services	2	6	6	7	7	+0	+1	+1	+1	+5	16.67%	7
Maintenance/ Technical	35	35	34	38	39	-2	+5	+5	+4	+4	9.89%	42
General Support	1279	1475	1425	1451	1419	-50	-6	-6	-57	+140	-3.84%	1,662
Attendant/ Aide	808	673	624	596	590	-49	-34	-34	-83	-218	-12.32%	686

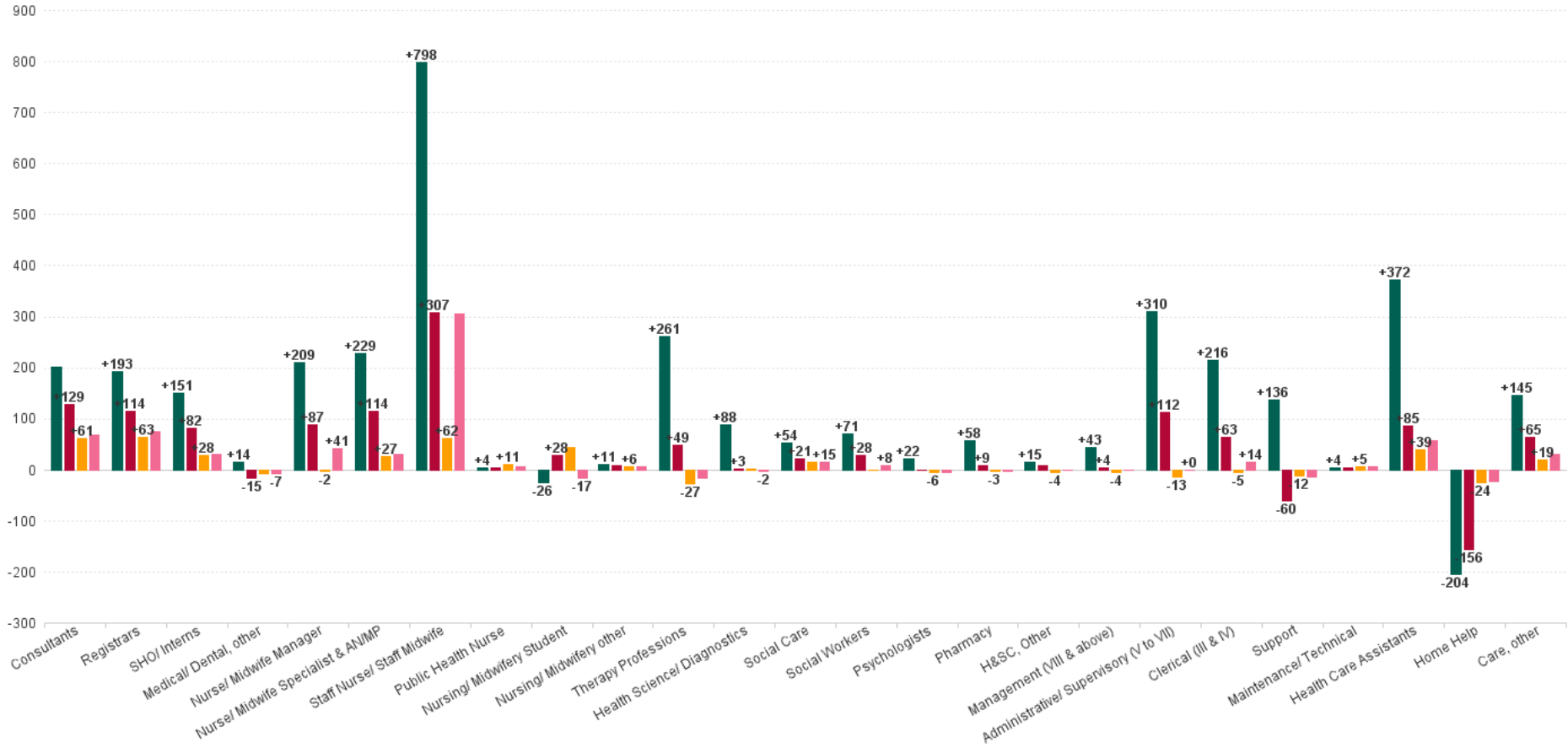


OCT 2024	WTE DEC 2019	WTE DEC 2022	WTE DEC 2023	WTE SEP 2024	WTE OCT 2024	WTE Change 2023	WTE Change 2024	WTE change since DEC 2023	WTE Change Dec 2022 to OCT 2024	WTE Change Dec 2019 to OCT 2024	% WTE Change Dec 2022 to OCT 2024	No. OCT 2024
Overall	15,829	18,109	18,929	19,214	19,203	+819	+274	+274	+1,093	+3,373	6.04%	22,655
Health Care Assistant/ Care Assistant	1,630	2,034	2,117	2,207	2,192	+83	+75	+75	+158	+562	7.77%	2,595
Health & Social Care Assistants	15	33	45	45	43	+11	-2	-2	+10	+28	29.63%	47
Health Care Assistants	2,453	2,740	2,786	2,847	2,825	+46	+39	+39	+85	+372	3.10%	3,328
Home Helps	1,124	1,076	944	920	920	-132	-24	-24	-156	-204	-14.50%	1,419
Home Help	1,124	1,076	944	920	920	-132	-24	-24	-156	-204	-14.50%	1,419
Health Promotion		15	18	17	19	+4	+0	+0	+4	+19	29.02%	23
Home Care Services	29	32	35	34	34	+3	-1	-1	+2	+5	5.09%	39
Other Care Grades	132	172	194	190	193	+22	-1	-1	+21	+60	12.13%	236
Pastoral Care	14	14	16	17	15	+2	-1	-1	+1	+1	7.38%	33
Workshop Services	287	310	326	338	347	+16	+21	+21	+37	+60	11.96%	408
Care, other	462	542	588	597	607	+46	+19	+19	+65	+145	11.95%	739
Patient & Client Care	4039	4358	4319	4364	4352	-40	+34	+34	-6	+313	-0.14%	5,486



WTE Change by Staff Group

■ WTE change since DEC 2019
 ■ WTE change since DEC 2022
 ■ WTE change since DEC 2023
 ■ WTE change since OCT 2023



HSE South West Employment Report by WTE, Headcount, Gender, Full-Time / Part-Time etc. OCT 2024

OCT 2024	WTE OCT 2024	No. OCT 2024	WTE : No	Number Male	Number Female	Male WTE : No.	Female WTE : No	Perm Count %	Perm Count Male %	Perm Count Female %	Fulltime Count %	Part time Count %	FT Count Male %	FT Count Female %
Total	19,203	22,655	1:0.8	19.10%	80.90%	1:0.9	1:0.8	79.43%	13.31%	66.11%	65.69%	34.31%	83.56%	61.48%
Consultants	590	638	1:0.9	59.40%	40.60%	1:0.9	1:0.9	72.26%	43.89%	28.37%	87.62%	12.38%	91.56%	81.85%
Registrars	650	668	1:1	50.75%	49.25%	1:1	1:1	5.09%	3.29%	1.80%	96.41%	3.59%	97.35%	95.44%
SHO/ Interns	559	566	1:1	42.23%	57.77%	1:1	1:1	0.88%	0.53%	0.35%	99.47%	0.53%	99.58%	99.39%
Medical/ Dental, other	133	245	1:0.5	32.24%	67.76%	1:0.5	1:0.6	65.71%	18.37%	47.35%	17.96%	82.04%	17.72%	18.07%
Medical & Dental	1,932	2,117	1:0.9	48.94%	51.06%	1:0.9	1:0.9	31.22%	16.53%	14.69%	85.50%	14.50%	89.67%	81.50%
Nurse/ Midwife Manager	1,266	1,403	1:0.9	9.12%	90.88%	1:1	1:0.9	97.01%	8.77%	88.24%	73.13%	26.87%	92.97%	71.14%
Nurse/ Midwife Specialist & AN/MP	404	453	1:0.9	9.27%	90.73%	1:1	1:0.9	97.57%	8.83%	88.74%	78.59%	21.41%	100.00%	76.40%
Staff Nurse/ Staff Midwife	4,512	5,292	1:0.9	8.60%	91.40%	1:0.9	1:0.8	81.42%	6.76%	74.66%	65.68%	34.32%	89.67%	63.43%
Public Health Nurse	219	286	1:0.8	0.35%	99.65%	1:1	1:0.8	96.15%	0.35%	95.80%	54.55%	45.45%	100.00%	54.39%
Public Health Nurse	219	286	1:0.8	0.35%	99.65%	1:1	1:0.8	96.15%	0.35%	95.80%	54.55%	45.45%	100.00%	54.39%
Nursing/ Midwifery awaiting registration	22	42	1:0.5		100.00%	1:	1:0.5	4.76%		4.76%	100.00%			100.00%
Post-registration Nurse/ Midwife Student	28	28	1:1		100.00%	1:	1:1	39.29%		39.29%	100.00%			100.00%
Pre-registration Nurse/ Midwife Intern	46	141	1:0.3	5.67%	94.33%	1:0.3	1:0.3				100.00%		100.00%	100.00%
Nursing/ Midwifery Student	96	211	1:0.5	3.79%	96.21%	1:0.3	1:0.5	6.16%		6.16%	100.00%		100.00%	100.00%
Nursing/ Midwifery other	21	24	1:0.9	4.17%	95.83%	1:1	1:0.9	91.67%	4.17%	87.50%	75.00%	25.00%	100.00%	73.91%
Nursing & Midwifery	6,518	7,669	1:0.8	8.28%	91.72%	1:0.9	1:0.8	83.74%	6.82%	76.92%	68.37%	31.63%	91.18%	66.31%
Therapy Professions	942	1,096	1:0.9	9.58%	90.42%	1:0.9	1:0.9	87.04%	8.21%	78.83%	71.35%	28.65%	89.52%	69.42%
Health Science/ Diagnostics	686	799	1:0.9	21.15%	78.85%	1:0.9	1:0.8	85.48%	18.52%	66.96%	72.59%	27.41%	93.49%	66.98%
Social Care	293	336	1:0.9	16.67%	83.33%	1:0.9	1:0.9	92.56%	15.18%	77.38%	78.57%	21.43%	91.07%	76.07%
Social Workers	214	241	1:0.9	17.84%	82.16%	1:1	1:0.9	89.63%	15.77%	73.86%	78.84%	21.16%	95.35%	75.25%
Psychologists	162	185	1:0.9	15.68%	84.32%	1:1	1:0.9	78.38%	14.59%	63.78%	75.14%	24.86%	96.55%	71.15%
Pharmacy	160	193	1:0.8	5.70%	94.30%	1:0.8	1:0.8	68.39%	3.63%	64.77%	69.43%	30.57%	72.73%	69.23%
H&SC, Other	94	117	1:0.8	27.35%	72.65%	1:0.9	1:0.8	72.65%	21.37%	51.28%	66.67%	33.33%	81.25%	61.18%
Health & Social Care Professionals	2,552	2,967	1:0.9	15.00%	85.00%	1:0.9	1:0.8	85.14%	13.01%	72.13%	73.04%	26.96%	91.24%	69.83%
Management (VIII & above)	156	160	1:1	27.50%	72.50%	1:1	1:1	96.88%	26.25%	70.63%	97.50%	2.50%	100.00%	96.55%
Administrative/ Supervisory (V to VII)	670	727	1:0.9	19.94%	80.06%	1:1	1:0.9	97.25%	19.81%	77.44%	81.71%	18.29%	97.24%	77.84%
Clerical (III & IV)	1,604	1,867	1:0.9	13.18%	86.82%	1:0.9	1:0.8	80.66%	10.07%	70.59%	66.68%	33.32%	90.24%	63.11%
Management & Administrative	2,430	2,754	1:0.9	15.80%	84.20%	1:1	1:0.9	85.98%	13.58%	72.40%	72.44%	27.56%	93.56%	68.48%



OCT 2024	WTE OCT 2024	No. OCT 2024	WTE : No	Number Male	Number Female	Male WTE : No.	Female WTE : No	Perm Count %	Perm Count Male %	Perm Count Female %	Fulltime Count %	Part time Count %	FT Count Male %	FT Count Female %
Total	19,203	22,655	1:0.8	19.10%	80.90%	1:0.9	1:0.8	79.43%	13.31%	66.11%	65.69%	34.31%	83.56%	61.48%
Support	1,380	1,620	1:0.9	39.57%	60.43%	1:0.9	1:0.8	73.15%	26.17%	46.98%	55.99%	44.01%	74.41%	43.92%
Maintenance/ Technical	39	42	1:0.9	92.86%	7.14%	1:0.9	1:0.9	90.48%	83.33%	7.14%	85.71%	14.29%	89.74%	33.33%
General Support	1,419	1,662	1:0.9	40.91%	59.09%	1:0.9	1:0.8	73.59%	27.62%	45.97%	56.74%	43.26%	75.29%	43.89%
Health Care Assistants	2,825	3,328	1:0.8	23.83%	76.17%	1:0.9	1:0.8	85.82%	20.55%	65.26%	63.91%	36.09%	77.55%	59.64%
Home Helps	920	1,419	1:0.6	8.32%	91.68%	1:0.8	1:0.6	94.22%	7.26%	86.96%	10.71%	89.29%	35.59%	8.46%
Home Help	920	1,419	1:0.6	8.32%	91.68%	1:0.8	1:0.6	94.22%	7.26%	86.96%	10.71%	89.29%	35.59%	8.46%
Care, other	607	739	1:0.8	24.90%	75.10%	1:0.9	1:0.8	81.33%	18.54%	62.79%	60.35%	39.65%	67.93%	57.84%
Patient & Client Care	4,352	5,486	1:0.8	19.96%	80.04%	1:0.9	1:0.8	87.39%	16.84%	70.54%	49.67%	50.33%	71.42%	44.25%



HSE South West Employment Report by Care Group: WTE, Headcount, Gender, Full-Time / Part-Time etc. OCT 2024

OCT 2024	WTE OCT 2024	No. OCT 2024	WTE : No	Number Male	Number Female	Male WTE : No.	Female WTE : No	Perm Count %	Number Male %	Number Female %	Fulltime Count %	Part time Count %	FT Count Male %	FT Count Female %
Total	19,203	22,655	1:0.8	4,326	18,329	1:0.9	1:0.8	79.43%	13.31%	66.11%	65.69%	34.31%	83.56%	61.48%
Acute Hospital Services	10,028	11,358	1:0.9	2,461	8,897	1:0.9	1:0.9	75.67%	13.73%	61.95%	72.74%	27.26%	89.27%	68.17%
Community Health & Wellbeing	47	62	1:0.8	6	56	1:0.7	1:0.8	77.42%	4.84%	72.58%	62.90%	37.10%	66.67%	62.50%
Disabilities	2,762	3,324	1:0.8	692	2,632	1:0.9	1:0.8	84.75%	17.03%	67.72%	71.03%	28.97%	75.72%	69.79%
Mental Health	1,564	1,747	1:0.9	440	1,307	1:0.9	1:0.9	76.59%	18.60%	57.99%	82.88%	17.12%	92.27%	79.72%
Older People	2,773	3,615	1:0.8	458	3,157	1:0.9	1:0.8	86.36%	10.10%	76.27%	38.20%	61.80%	64.19%	34.43%
Primary Care	1,983	2,500	1:0.8	263	2,237	1:0.8	1:0.8	81.16%	7.68%	73.48%	53.92%	46.08%	69.96%	52.03%
CHO Operations	46	49	1:0.9	6	43	1:1	1:0.9	91.84%	12.24%	79.59%	89.80%	10.20%	100.00%	88.37%



Month-on-Month Summary	% WTE change since SEP 2024	WTE change since SEP 2024	Acute Hospital Services	Disabilities	Mental Health	Older People	Primary Care	Community Health & Wellbeing	CHO Operations
Total	-0.1%	-11.3	-35.0	+0.4	-2.4	+4.0	+18.8	+3.0	-0.1
Consultants	+1.9%	+11.1	+9.9	+0.0	+1.1	+0.0	+0.1		
Registrars	+0.9%	+5.8	+5.3		+0.0		+0.5		
SHO/ Interns	+2.2%	+11.9	+4.4		+1.5	+0.0	+6.0		
Medical/ Dental, other	+3.6%	+4.6	+0.0	+0.0	+0.0	+0.1	+4.5		
Medical & Dental	+1.8%	+33.4	+19.6	+0.0	+2.7	+0.1	+11.0		
Nurse/ Midwife Manager	-0.3%	-3.6	-5.8	-1.6	+1.1	-0.9	+2.8	+1.0	-0.3
Nurse/ Midwife Specialist & AN/MP	+1.2%	+4.8	+3.0	+0.0	+0.8	-0.0	+1.0		-0.0
Staff Nurse/ Staff Midwife	+0.1%	+6.3	+15.8	-4.4	-6.1	+4.2	-3.2		
Public Health Nurse	+2.2%	+4.7				-0.1	+4.8		
Nursing/ Midwifery Student	-29.4%	-40.0	-41.4	-3.3	-3.4	+0.5	+7.6		
Nursing/ Midwifery other	+10.3%	+1.9	+1.9	+0.0	+0.0		+0.0		
Nursing & Midwifery	-0.4%	-25.9	-26.5	-9.3	-7.7	+3.7	+13.2	+1.0	-0.3
Therapy Professions	-0.3%	-2.6	-2.3	+0.7	+2.1	+0.6	-3.6	-0.1	
Health Science/ Diagnostics	+0.2%	+1.3	+1.3			+0.0	+0.1		
Social Care	+0.4%	+1.1		+1.5	-0.2	+0.0	-0.1		
Social Workers	+0.7%	+1.4	-0.5	+1.6	+0.3		+0.4		-0.5
Psychologists	+3.2%	+5.0	+0.2	+0.1	+4.5		+0.3		
Pharmacy	+0.1%	+0.2	-0.3		+0.0	+0.6	-0.1		+0.0
H&SC, Other	+12.6%	+10.5	+10.0	+0.0	+0.0	-0.7	+0.9	+0.3	



Health & Social Care Professionals	+0.7%	+16.9	+8.3	+3.9	+6.7	+0.4	-2.2	+0.3	-0.5
Management (VIII & above)	-0.8%	-1.3	-1.8	+1.1	+0.8	-0.0	-1.4	+0.0	+0.0
Administrative/ Supervisory (V to VII)	+0.7%	+4.9	+0.3	+1.5	+0.1	+0.1	+2.2	+0.3	+0.4
Clerical (III & IV)	+0.3%	+4.9	+6.9	-1.7	-0.1	+0.5	-1.3	+0.3	+0.4
Management & Administrative	+0.3%	+8.5	+5.5	+0.9	+0.8	+0.5	-0.5	+0.6	+0.8
Support	-2.4%	-33.4	-27.8	-0.3	-2.3	-0.6	-2.5		
Maintenance/ Technical	+2.6%	+1.0	+0.0	+0.0	+0.0	+0.0	+1.0		
General Support	-2.2%	-32.4	-27.8	-0.3	-2.3	-0.6	-1.5		
Health Care Assistants	-0.8%	-22.4	-14.2	-2.8	-2.3	-0.6	-2.4		
Home Help	+0.0%	+0.4				+0.6	-0.2		
Care, other	+1.7%	+10.3	+0.1	+8.1	-0.3	-0.2	+1.4	+1.2	
Patient & Client Care	-0.3%	-11.7	-14.1	+5.2	-2.6	-0.2	-1.1	+1.2	



Year-on-Year Summary	% WTE change since OCT 2023	WTE change since OCT 2023	Acute Hospital Services	Disabilities	Mental Health	Older People	Primary Care	Community Health & Wellbeing	CHO Operations
Total	+3.3%	+605.5	+310.0	+104.1	-29.4	+51.0	+176.6	-5.5	-1.2
Consultants	+13.2%	+68.7	+58.5	-0.0	+6.5	+0.0	+3.8		
Registrars	+13.1%	+75.2	+58.6		+0.7		+15.9		
SHO/ Interns	+5.7%	+30.3	+14.7		+6.6	+1.0	+8.0		
Medical/ Dental, other	-5.1%	-7.2	-1.0	+0.0	+0.0	+1.0	-6.9	-0.3	
Medical & Dental	+9.5%	+167.0	+130.7	-0.0	+13.8	+2.0	+20.8	-0.3	
Nurse/ Midwife Manager	+3.4%	+41.2	+15.9	-1.5	+1.5	+11.0	+15.9	-0.2	-1.5
Nurse/ Midwife Specialist & AN/MP	+8.0%	+29.8	+13.4	-1.5	-2.6	-1.1	+21.6		-0.0
Staff Nurse/ Staff Midwife	+7.3%	+305.0	+218.4	-0.5	-8.1	+48.0	+47.2		
Public Health Nurse	+3.4%	+7.2				-0.3	+7.4		
Nursing/ Midwifery Student	-15.0%	-17.0	-13.9	+3.5	-4.7	+1.5	-3.4		
Nursing/ Midwifery other	+43.1%	+6.3	+3.3	+0.0	+2.0		+1.0		
Nursing & Midwifery	+6.1%	+372.4	+237.0	+0.1	-11.9	+59.1	+89.8	-0.2	-1.5
Therapy Professions	-1.8%	-17.1	-7.4	+5.1	-3.6	-1.1	-10.2	+0.1	
Health Science/ Diagnostics	-0.3%	-2.1	-1.6			+0.0	-0.4		
Social Care	+5.2%	+14.6		+15.0	-0.9	+0.0	+0.5		
Social Workers	+3.9%	+8.1	+1.9	+3.8	-3.9		+6.6		-0.3
Psychologists	-2.5%	-4.2	+3.4	+2.8	-1.9		-8.4		
Pharmacy	-2.1%	-3.5	-6.0		-0.9	+0.4	+3.0		+0.0
H&SC, Other	-1.7%	-1.6	+1.0	+3.0	-0.5	+1.5	-2.4	-4.2	



Health & Social Care Professionals	-0.2%	-5.7	-8.7	+29.6	-11.7	+0.8	-11.4	-4.1	-0.3
Management (VIII & above)	-0.3%	-0.5	+1.5	-1.1	-1.2	-3.4	+2.7	+0.0	+1.0
Administrative/ Supervisory (V to VII)	+0.0%	+0.0	-10.1	+13.7	-1.5	+8.1	-9.1	+0.6	-1.8
Clerical (III & IV)	+0.9%	+14.4	-20.3	+4.2	+7.5	-0.8	+23.2	-0.8	+1.5
Management & Administrative	+0.6%	+13.9	-28.9	+16.8	+4.8	+3.9	+16.8	-0.2	+0.7
Support	-0.9%	-12.9	-36.3	-5.5	-7.8	-6.4	+43.1		
Maintenance/ Technical	+19.1%	+6.3	+4.0	-0.8	+0.0	+0.0	+3.0		
General Support	-0.5%	-6.6	-32.3	-6.2	-7.8	-6.4	+46.1		
Health Care Assistants	+2.1%	+56.9	-1.8	+43.5	-16.4	+8.0	+23.5		
Home Help	-2.4%	-22.9				-21.6	-1.3		
Care, other	+5.3%	+30.5	+13.8	+20.3	-0.2	+5.0	-7.9	-0.6	
Patient & Client Care	+1.5%	+64.5	+12.0	+63.9	-16.6	-8.6	+14.4	-0.6	



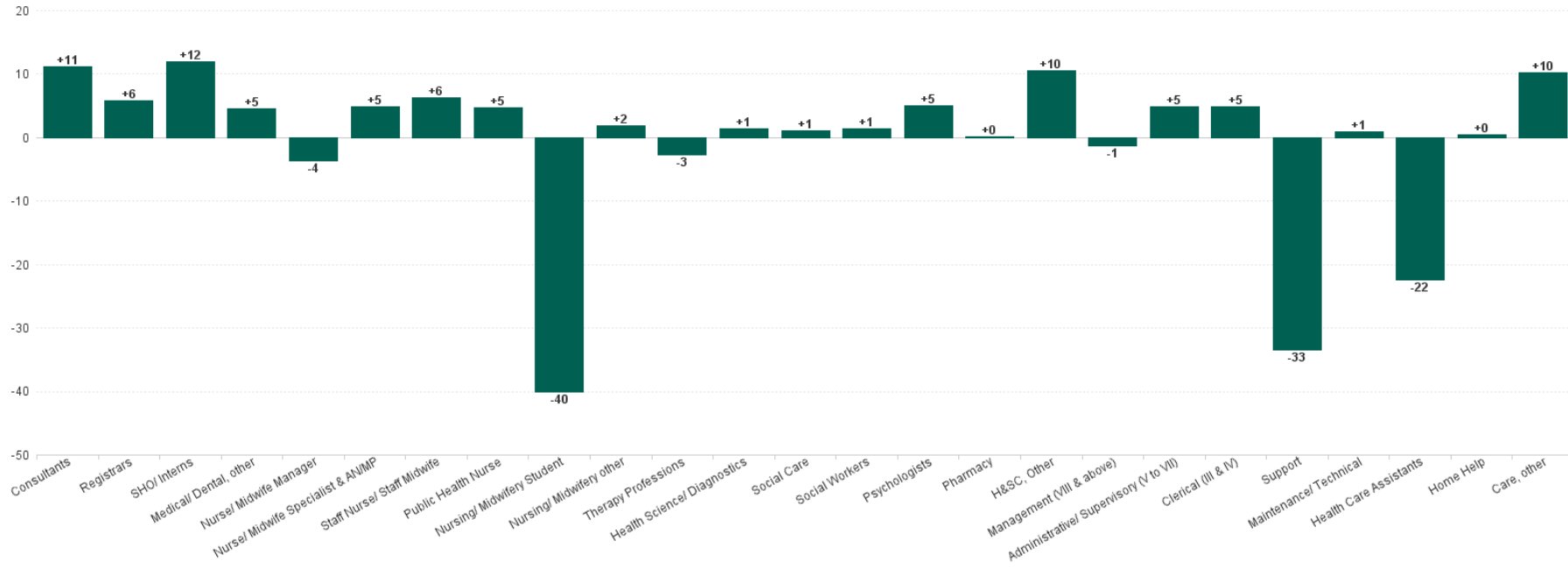
Year-to-Date Summary	% WTE change since DEC 2023	WTE change since DEC 2023	Acute Hospital Services	Disabilities	Mental Health	Older People	Primary Care	Community Health & Wellbeing	CHO Operations
Total	+1.4%	+274.0	+66.7	+76.0	-51.4	+20.9	+167.8	-4.6	-1.5
Consultants	+11.6%	+61.5	+52.5	-0.0	+6.3	+0.0	+2.7		
Registrars	+10.7%	+62.8	+48.3		-1.1		+15.5		
SHO/ Interns	+5.2%	+27.6	+13.4		+5.3	+1.0	+8.0		
Medical/ Dental, other	-4.6%	-6.4	-1.0	+0.0	+0.0	+1.7	-7.1		
Medical & Dental	+8.1%	+145.5	+113.2	-0.0	+10.5	+2.7	+19.1		
Nurse/ Midwife Manager	-0.2%	-2.3	-20.8	-0.4	+1.3	+3.9	+14.2	-0.1	-0.5
Nurse/ Midwife Specialist & AN/MP	+7.0%	+26.6	+10.9	-1.5	-4.6	-1.1	+23.0		-0.0
Staff Nurse/ Staff Midwife	+1.4%	+62.2	+38.0	-5.1	-44.5	+31.4	+42.5		
Public Health Nurse	+5.2%	+10.8				-0.5	+11.3		
Nursing/ Midwifery Student	+81.1%	+43.0	+25.6	+5.2	+17.6	-3.0	-2.4		
Nursing/ Midwifery other	+38.3%	+5.8	+2.8	+0.0	+2.0		+1.0		
Nursing & Midwifery	+2.3%	+146.1	+56.4	-1.8	-28.3	+30.7	+89.6	-0.1	-0.5
Therapy Professions	-2.8%	-27.3	-15.5	+2.7	-4.0	-1.6	-8.8	-0.1	
Health Science/ Diagnostics	+0.3%	+1.9	+2.9			+0.0	-0.9		
Social Care	+5.5%	+15.3		+14.6	+0.6	+0.0	+0.1		
Social Workers	+0.0%	+0.1	+0.9	-0.6	-4.3		+5.3		-1.3
Psychologists	-3.3%	-5.5	+2.4	+2.0	-1.3		-8.7		
Pharmacy	-1.8%	-2.9	-5.6		-0.8	+0.4	+3.1		+0.0
H&SC, Other	-4.2%	-4.2	+1.0	-1.0	-1.0	-1.4	+2.2	-3.9	



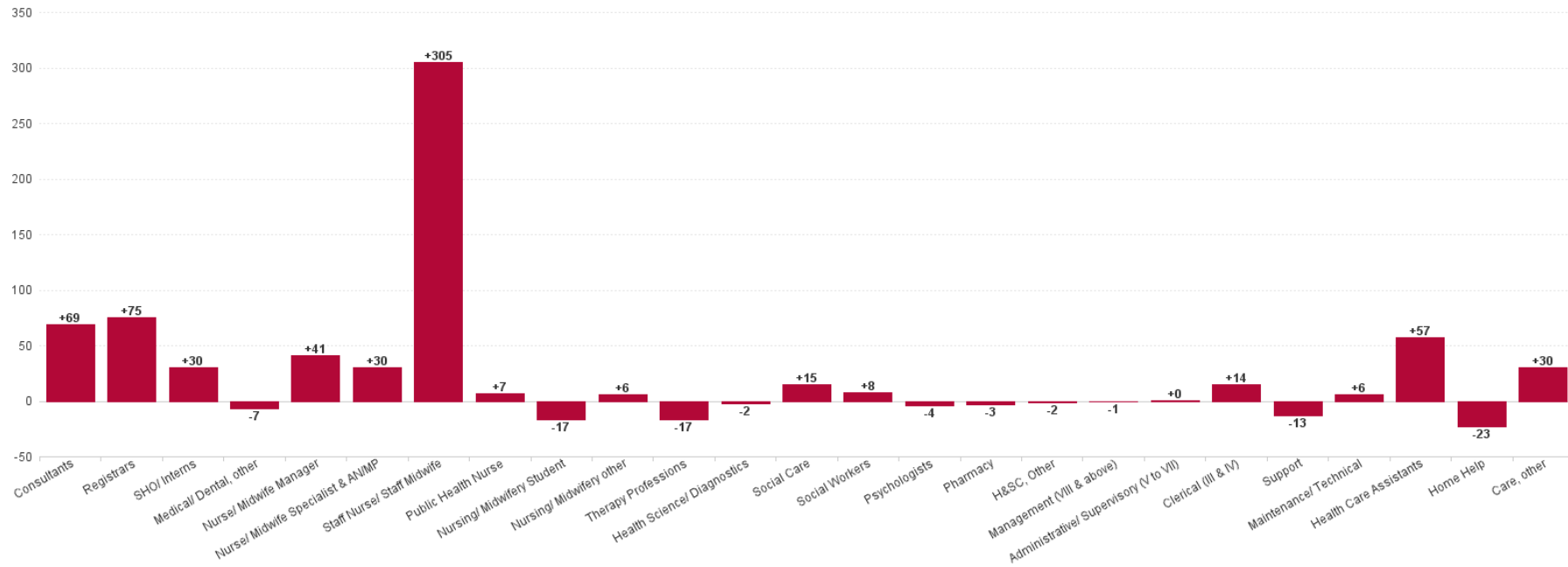
Health & Social Care Professionals	-0.9%	-22.6	-13.9	+17.6	-10.7	-2.6	-7.7	-4.0	-1.3
Management (VIII & above)	-2.4%	-3.9	-0.9	-1.6	-0.2	-3.4	+2.1	+0.0	+0.1
Administrative/ Supervisory (V to VII)	-1.9%	-13.1	-13.5	+6.8	-2.7	+8.1	-10.8	+0.2	-1.3
Clerical (III & IV)	-0.3%	-5.2	-22.5	+5.4	-1.6	-0.4	+13.4	-1.1	+1.5
Management & Administrative	-0.9%	-22.2	-36.9	+10.6	-4.4	+4.3	+4.7	-0.8	+0.3
Support	-0.8%	-11.6	-38.0	-4.1	-8.2	-5.5	+44.3		
Maintenance/ Technical	+15.6%	+5.3	+3.0	-0.8	+0.0	+0.0	+3.0		
General Support	-0.4%	-6.3	-35.0	-4.9	-8.2	-5.5	+47.3		
Health Care Assistants	+1.4%	+38.7	-23.0	+34.7	-9.9	+13.5	+23.4		
Home Help	-2.5%	-24.0				-22.7	-1.3		
Care, other	+3.2%	+18.8	+6.0	+19.7	-0.3	+0.4	-7.4	+0.3	
Patient & Client Care	+0.8%	+33.5	-17.0	+54.5	-10.2	-8.8	+14.8	+0.3	



Previous Month Summary Chart: Change since SEP 2024



Previous Year Summary Chart: Change since OCT 2023



YTD Summary Chart: Change since DEC 2023

