

HSE Midwest: FEB 2025

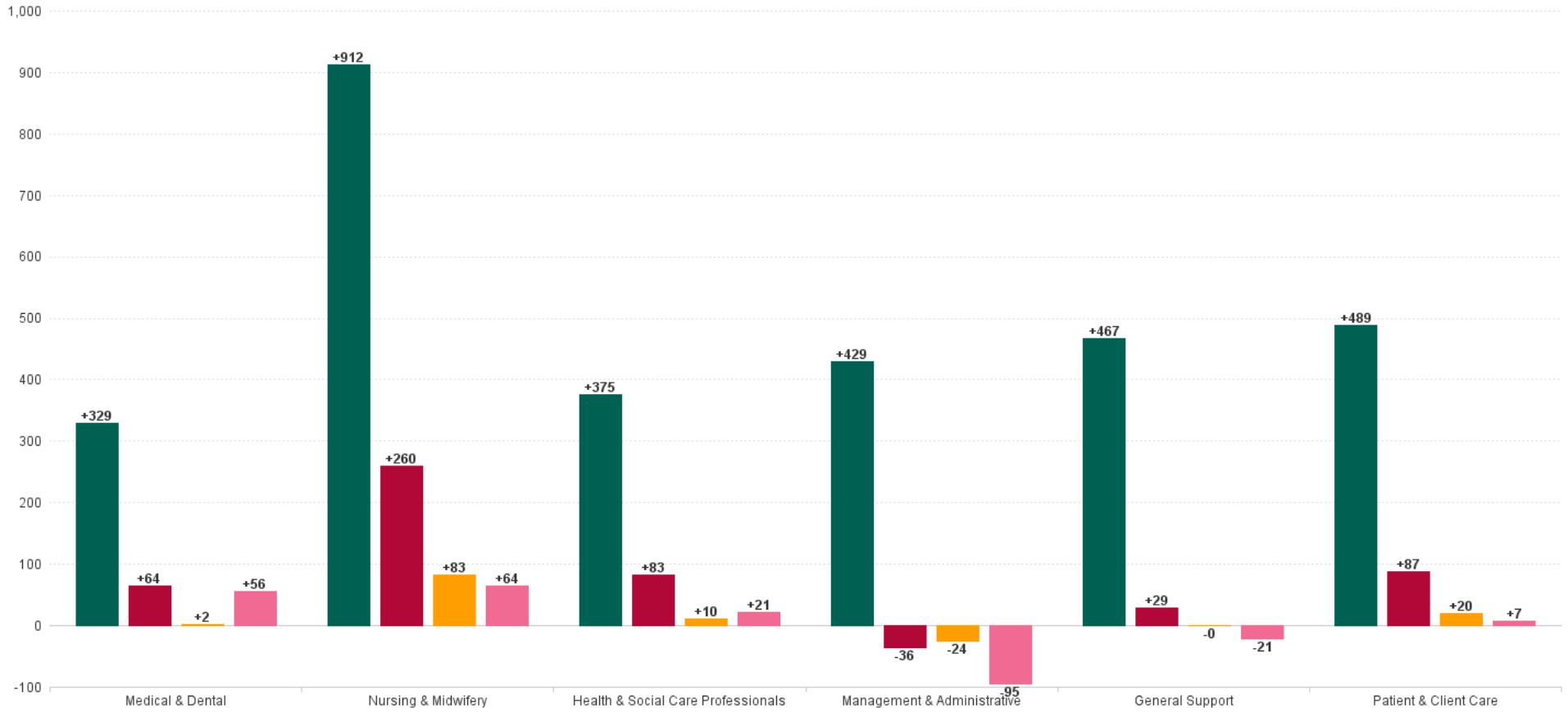
Employment Report by Staff Group

FEB 2025	WTE DEC 2019	WTE DEC 2023	WTE DEC 2024	WTE JAN 2025	WTE FEB 2025	WTE Change 2024	WTE Change 2025	WTE Change JAN 2025	WTE Change Dec 2023 to FEB 2025	WTE Change Dec 2019 to FEB 2025	% WTE Change Dec 2023 to FEB 2025	No. FEB 2025
Overall	8,503	11,017	11,413	11,466	11,503	+397	+90	+38	+487	+3,000	4.42%	13,035
Consultants	192	260	277	279	282	+17	+5	+3	+22	+90	8.63%	303
Registrars	232	319	347	357	357	+28	+9	-1	+37	+125	11.73%	364
SHO/ Interns	222	337	356	344	344	+19	-12	-0	+7	+122	2.17%	346
Medical/ Dental, other	59	54	52	51	51	-2	-1	-1	-3	-8	-6.03%	68
Medical & Dental	705	970	1,032	1,032	1,034	+62	+2	+1	+64	+329	6.59%	1,081
Nurse/ Midwife Manager	572	739	782	793	794	+43	+13	+1	+56	+223	7.54%	843
Nurse/ Midwife Specialist & AN/MP	132	246	275	278	277	+29	+2	-1	+31	+145	12.44%	299
Staff Nurse/ Staff Midwife	2,013	2,390	2,499	2,503	2,509	+109	+11	+6	+120	+496	5.01%	2,812
Public Health Nurse	127	125	131	133	132	+6	+1	-1	+7	+5	5.38%	157
Nursing/ Midwifery awaiting registration		1				-1			-1		-100.00%	
Post-registration Nurse/ Midwife Student	16	20	11	11	11	-9	+0	+0	-9	-5	-44.02%	11
Pre-registration Nurse/ Midwife Intern	24	10	10	36	65	-1	+55	+29	+54	+41	518.23%	130
Nursing/ Midwifery Student	39	31	21	47	76	-10	+55	+29	+45	+36	143.46%	141
Nursing/ Midwifery other	15	18	19	19	21	+1	+2	+2	+3	+6	15.57%	25
Nursing & Midwifery	2,898	3,549	3,726	3,773	3,809	+177	+83	+37	+260	+912	7.33%	4,277
Dietitians	20	46	51	53	52	+5	+1	-0	+6	+33	13.43%	59
Occupational Therapists	95	138	155	160	158	+17	+4	-1	+20	+63	14.50%	180
Orthoptists		2	2	2	2	-0	+0	-0	-0	+2	-10.00%	2
Physiotherapists	112	168	185	184	181	+16	-3	-2	+13	+70	7.85%	206
Podiatrists & Chiropodists	8	8	12	12	11	+4	-1	-1	+3	+2	39.61%	12
Speech & Language Therapists	63	96	84	88	90	-12	+6	+3	-6	+28	-6.36%	106
Therapy Professions	298	459	488	497	495	+30	+6	-3	+36	+197	7.89%	565
Health Science/ Diagnostics	258	303	309	309	307	+6	-2	-2	+4	+49	1.36%	339
Social Care	245	273	281	287	284	+9	+3	-3	+12	+40	4.32%	344
Pharmacy	50	70	77	77	77	+7	-0	+1	+7	+27	9.49%	90
Psychologists	127	149	156	157	157	+7	+1	+0	+8	+31	5.48%	168
Social Workers	71	77	87	87	90	+10	+2	+3	+13	+19	16.51%	99
H&SC, Other	40	48	52	52	52	+4	-0	+0	+4	+13	7.67%	61
Health & Social Care Professionals	1,087	1,379	1,452	1,466	1,462	+73	+10	-3	+83	+375	6.04%	1,666
Management (VIII & above)	74	108	113	112	110	+5	-3	-2	+2	+37	1.66%	113
Administrative/ Supervisory (V to VII)	235	466	447	445	444	-18	-4	-1	-22	+209	-4.75%	465
Clerical (III & IV)	806	1,006	1,007	995	990	+1	-18	-5	-16	+184	-1.60%	1,092
Management & Administrative	1,114	1,580	1,568	1,552	1,544	-12	-24	-8	-36	+429	-2.31%	1,670
Support	449	874	895	895	892	+20	-2	-2	+18	+443	2.08%	1,007
Maintenance/ Technical	116	129	137	138	139	+9	+2	+1	+11	+23	8.20%	143
General Support	565	1,003	1,032	1,033	1,032	+29	-0	-1	+29	+467	2.87%	1,150
Health Care Assistants	1,893	2,215	2,271	2,284	2,290	+57	+19	+7	+75	+397	3.40%	2,810
Care, other	241	321	332	327	333	+11	+1	+6	+12	+91	3.67%	381
Patient & Client Care	2,134	2,536	2,603	2,611	2,623	+67	+20	+12	+87	+489	3.44%	3,191



WTE Change by Staff Category

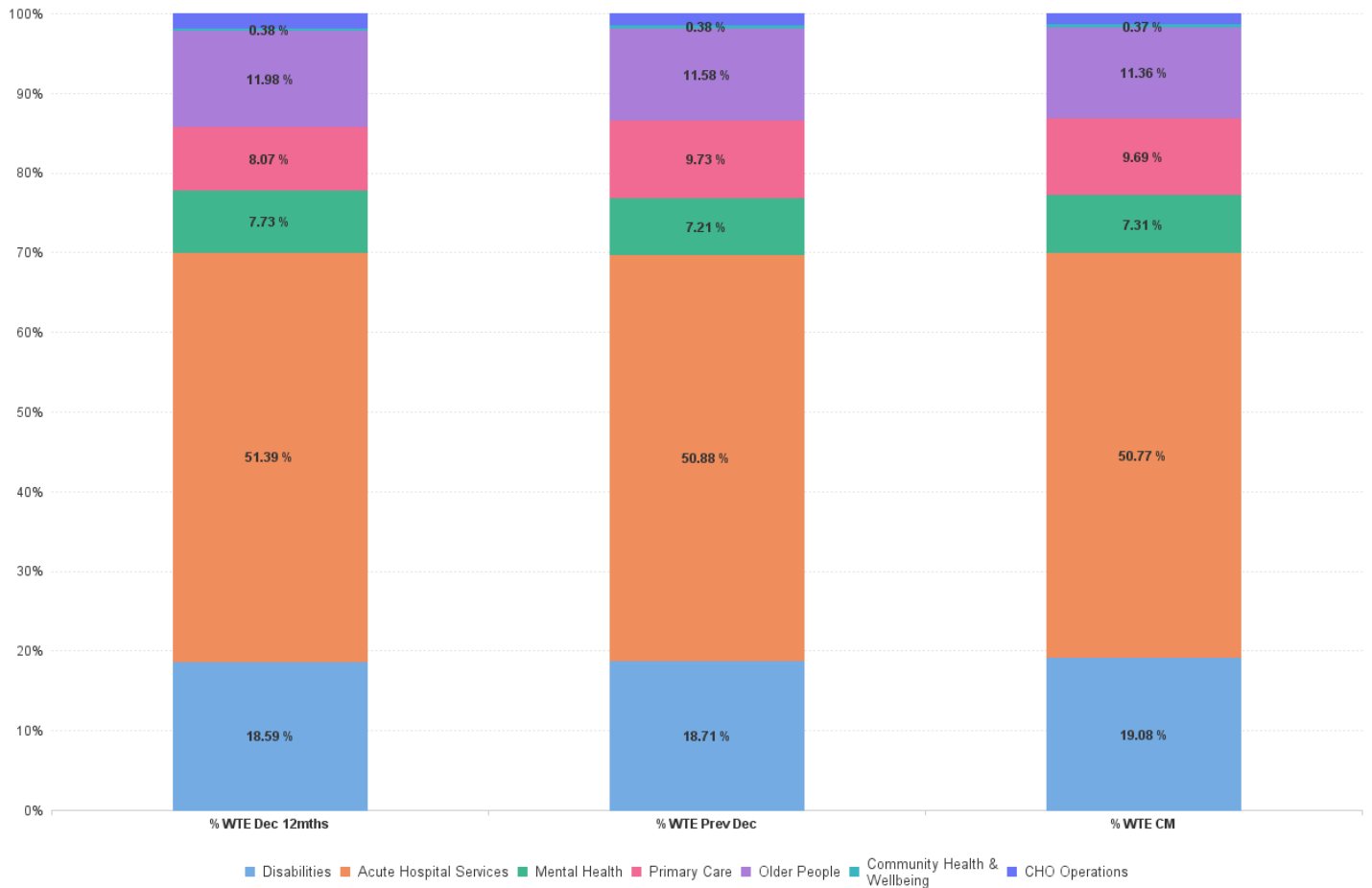
■ WTE change since DEC 2019
 ■ WTE change since DEC 2023
 ■ WTE change since DEC 2024
 ■ WTE change since FEB 2024



HSE Midwest: FEB 2025

FEB 2025	WTE DEC 2019	WTE DEC 2023	WTE DEC 2024	WTE JAN 2025	WTE FEB 2025	WTE Change 2024	WTE Change 2025	WTE Change JAN 2025	WTE Change Dec 2023 to FEB 2025	WTE Change Dec 2019 to FEB 2025	% WTE Change Dec 2023 to FEB 2025	No. FEB 2025
Overall	8,503	11,017	11,413	11,466	11,503	+397	+90	+38	+487	+3,000	4.42%	13,035
Disabilities	1,823	2,048	2,136	2,177	2,195	+87	+59	+18	+147	+372	7.16%	2,639
Acute Hospital Services	4,146	5,661	5,807	5,818	5,840	+146	+33	+22	+179	+1,694	3.16%	6,362
Mental Health	795	852	823	833	841	-28	+17	+8	-11	+45	-1.29%	913
Primary Care	764	889	1,111	1,116	1,114	+222	+4	-1	+225	+351	25.35%	1,331
Older People	974	1,320	1,321	1,311	1,307	+2	-15	-5	-13	+332	-1.01%	1,573
Community Health & Wellbeing		41	43	43	43	+1	-0	-0	+1	+43	2.78%	47
CHO Operations		205	173	168	164	-33	-8	-3	-41	+164	-20.00%	170

% Total by Care Group



HSE Midwest: FEB 2025

Disabilities

FEB 2025	WTE DEC 2019	WTE DEC 2023	WTE DEC 2024	WTE JAN 2025	WTE FEB 2025	WTE Change 2024	WTE Change 2025	WTE Change JAN 2025	WTE Change Dec 2023 to FEB 2025	WTE Change Dec 2019 to FEB 2025	% WTE Change Dec 2023 to FEB 2025	No. FEB 2025
Total Disabilities	1,823	2,048	2,136	2,177	2,195	+87	+59	+59	+147	+372	7.16%	2,639
Consultants	1	0	0	0	0	-0	-0	-0	-0	-1	-57.14%	1
Medical/ Dental, other	1	0	0	0	0	+0	+0	+0	+0	-0	0.00%	1
Medical & Dental	2	1	1	1	1	-0	-0	-0	-0	-1	-18.18%	2
Nurse/ Midwife Manager	76	80	81	83	84	+1	+2	+2	+4	+8	4.83%	87
Nurse/ Midwife Specialist & AN/MP	13	14	12	12	12	-2	-0	-0	-2	-1	-15.35%	13
Staff Nurse/ Staff Midwife	247	253	261	272	274	+8	+13	+13	+21	+27	8.45%	310
Pre-registration Nurse/ Midwife Intern	12	9	7	8	8	-4	-30.4%	+1	+14.3%	-1	-11.11%	16
Nursing/ Midwifery Student	12	9	7	8	8	-2	+1	+1	-1	-4	-11.11%	16
Nursing/ Midwifery other	4	3	3	3	3	+0	+0	+0	+0	-1	0.00%	3
Nursing & Midwifery	351	358	364	378	380	+6	+16	+16	+22	+29	6.18%	429
Occupational Therapists	24	21	23	24	22	-1	-5.0%	-1	-4.3%	+1	7.13%	24
Physiotherapists	20	11	14	13	13	-7	-35.8%	-1	-7.7%	+1	12.63%	14
Speech & Language Therapists	31	19	19	20	22	-9	-29.4%	+3	+16.6%	+3	17.35%	25
Therapy Professions	74	51	56	57	57	+5	+1	+1	+6	-17	12.09%	63
Health Science/ Diagnostics		4	5	5	5	+1	-0	-0	+1	+5	24.50%	5
Social Care	241	272	280	286	284	+9	+3	+3	+12	+43	4.37%	343
Psychologists	16	17	20	20	19	+3	-1	-1	+3	+3	15.04%	22
Social Workers	17	19	18	17	19	-0	+1	+1	+0	+2	1.83%	21
H&SC, Other	12	10	11	10	10	+1	-0	-0	+0	-2	4.61%	15
Health & Social Care Professionals	359	372	390	396	394	+18	+4	+4	+22	+35	6.00%	469
Management (VIII & above)	7	17	19	19	19	+2	+0	+0	+2	+12	12.40%	19
Administrative/ Supervisory (V to VII)	41	59	61	61	62	+2	+1	+1	+2	+21	4.10%	63
Clerical (III & IV)	59	60	66	67	69	+6	+3	+3	+9	+10	14.26%	78
Management & Administrative	107	136	146	146	149	+10	+3	+3	+13	+43	9.61%	160
Support	53	52	53	53	53	+1	+0	+0	+1	+0	2.53%	62
Maintenance/ Technical	14	21	19	19	21	-2	+2	+2	-0	+6	-2.19%	23
General Support	67	73	72	72	74	-1	+2	+2	+1	+6	1.17%	85
Health Care Assistants	764	894	939	963	973	+45	+34	+34	+79	+208	8.80%	1,236
Care, other	173	215	225	221	225	+10	-0	-0	+10	+52	4.56%	258
Patient & Client Care	937	1,109	1,164	1,184	1,197	+55	+34	+34	+88	+260	7.98%	1,494



HSE Midwest: FEB 2025

Acute Hospital Services

FEB 2025	WTE DEC 2019	WTE DEC 2023	WTE DEC 2024	WTE JAN 2025	WTE FEB 2025	WTE Change 2024	WTE Change 2025	WTE Change JAN 2025	WTE Change Dec 2023 to FEB 2025	WTE Change Dec 2019 to FEB 2025	% WTE Change Dec 2023 to FEB 2025	No. FEB 2025
Total Acute Hospital Services	4,146	5,661	5,807	5,818	5,840	+146	+33	+33	+179	+1,694	3.16%	6,362
Consultants	165	226	246	247	249	+20	+3	+3	+24	+84	10.43%	266
Registrars	190	263	284	292	292	+20	+8	+8	+28	+101	10.72%	298
SHO/ Interns	197	315	343	332	332	+28	-11	-11	+17	+135	5.38%	333
Medical/ Dental, other	1	1	1	1	1	+0	-0	-0	-0	+0	-3.53%	2
Medical & Dental	553	805	874	873	873	+69	-0	-0	+69	+320	8.53%	899
Nurse/ Midwife Manager	325	463	489	495	496	+27	+6	+6	+33	+171	7.17%	527
Nurse/ Midwife Specialist & AN/MP	76	148	156	155	155	+8	-1	-1	+7	+79	4.43%	162
Staff Nurse/ Staff Midwife	1,226	1,525	1,587	1,590	1,592	+61	+5	+5	+66	+366	4.35%	1,764
Nursing/ Midwifery awaiting registration		1								-1	-100.00%	
Post-registration Nurse/ Midwife Student	16	5	5	5	5	-11	-68.4%	+0	+0.0%	-0	-4.76%	5
Pre-registration Nurse/ Midwife Intern	3	1	1	20	43	+40	+1,271.5%	+41	+2,892.3%	+42	6,692.06%	86
Nursing/ Midwifery Student	19	7	6	25	48	-0	+41	+41	+41	+29	594.62%	91
Nursing/ Midwifery other	11	14	14	14	15	+0	+0	+0	+1	+4	4.39%	17
Nursing & Midwifery	1,657	2,157	2,253	2,279	2,305	+95	+52	+52	+148	+648	6.85%	2,561
Dietitians	17	25	29	30	30	+13	+75.5%	+1	+3.5%	+5	19.05%	33
Occupational Therapists	8	18	28	29	30	+23	+300.4%	+2	+6.0%	+12	62.50%	33
Orthoptists		1	1	1	1	+1		+0	+0.0%	+0	0.00%	1
Physiotherapists	52	77	88	87	86	+34	+65.0%	-2	-2.2%	+8	10.73%	96
Podiatrists & Chiropodists	3	2	2	2	3	-0	-15.7%	+0	+3.7%	+1	26.50%	3
Speech & Language Therapists	5	13	14	14	15	+11	+228.9%	+2	+11.2%	+3	20.97%	17
Therapy Professions	84	137	162	162	165	+25	+2	+2	+28	+80	20.36%	183
Health Science/ Diagnostics	252	293	299	299	297	+6	-2	-2	+4	+45	1.21%	327
Pharmacy	45	64	67	66	68	+3	+1	+1	+4	+23	6.47%	77
Psychologists	3	7	7	7	8	-0	+1	+1	+1	+5	7.94%	10
Social Workers	11	11	14	14	14	+3	-0	-0	+3	+3	23.06%	15
H&SC, Other	7	13	16	15	15	+3	-0	-0	+3	+8	21.04%	16
Health & Social Care Professionals	403	525	565	564	567	+40	+1	+1	+41	+164	7.88%	628
Management (VIII & above)	36	48	44	43	42	-5	-2	-2	-7	+6	-13.97%	42
Administrative/ Supervisory (V to VII)	103	243	230	229	230	-13	+0	+0	-13	+127	-5.26%	241
Clerical (III & IV)	485	602	597	590	583	-4	-14	-14	-18	+98	-3.02%	633
Management & Administrative	624	893	871	862	855	-22	-16	-16	-38	+231	-4.22%	916
Support	286	730	711	712	709	-18	-2	-2	-20	+423	-2.79%	779
Maintenance/ Technical	39	39	36	36	35	-3	-1	-1	-4	-3	-10.12%	36
General Support	325	769	747	748	745	-22	-2	-2	-24	+420	-3.17%	815
Health Care Assistants	577	506	492	487	490	-14	-3	-3	-16	-87	-3.20%	537
Care, other	8	6	5	5	5	-1	+1	+1	-0	-2	-7.93%	6
Patient & Client Care	585	512	497	492	495	-15	-2	-2	-17	-90	-3.25%	543

HSE Midwest: FEB 2025

Mental Health

FEB 2025	WTE DEC 2019	WTE DEC 2023	WTE DEC 2024	WTE JAN 2025	WTE FEB 2025	WTE Change 2024	WTE Change 2025	WTE Change JAN 2025	WTE Change Dec 2023 to FEB 2025	WTE Change Dec 2019 to FEB 2025	% WTE Change Dec 2023 to FEB 2025	No. FEB 2025
Total Mental Health	795	852	823	833	841	-28	+17	+17	-11	+45	-1.29%	913
Consultants	23	30	28	29	30	-2	+2	+2	+0	+7	1.17%	32
Registrars	18	22	28	27	27	+6	-1	-1	+5	+9	23.73%	28
SHO/ Interns	19	19	10	10	10	-9	+0	+0	-9	-9	-47.34%	10
Medical & Dental	60	71	66	67	67	-5	+2	+2	-3	+7	-4.82%	70
Nurse/ Midwife Manager	88	91	87	89	89	-4	+2	+2	-2	+1	-2.12%	93
Nurse/ Midwife Specialist & AN/MP	39	52	49	53	53	-3	+4	+4	+0	+13	0.92%	56
Staff Nurse/ Staff Midwife	245	254	260	255	257	+6	-3	-3	+3	+12	1.27%	279
Pre-registration Nurse/ Midwife Intern	9	1	2	7	14	+5	+57.0%	+12	+827.2%	+13	1,547.06%	28
Nursing/ Midwifery Student	9	1	2	7	14	+1	+12	+12	+13	+5	1,547.06%	28
Nursing/ Midwifery other		1		0	1	-1	+1	+1	+0	+1	0.00%	1
Nursing & Midwifery	381	399	398	405	414	-1	+16	+16	+15	+32	3.75%	457
Occupational Therapists	23	24	24	25	25	+2	+8.2%	+2	+7.1%	+1	6.15%	28
Speech & Language Therapists	3	6	5	4	4	+1	+50.0%	-0	-3.1%	-2	-27.70%	5
Therapy Professions	26	30	28	30	30	-2	+2	+2	-0	+3	-0.77%	33
Social Care	3	1	1	1	1	-0	-0	-0	-0	-2	-9.57%	1
Pharmacy	3	3	3	3	3	+0	+0	+0	+0	+0	3.64%	3
Psychologists	92	91	85	86	86	-6	+1	+1	-4	-6	-4.87%	90
Social Workers	25	26	25	27	27	-1	+2	+2	+1	+2	5.60%	29
H&SC, Other	10	11	11	11	11	+0	+0	+0	+1	+2	4.87%	13
Health & Social Care Professionals	159	161	153	157	158	-8	+5	+5	-3	-1	-1.65%	169
Management (VIII & above)	2	4	4	4	4	+0	-0	-0	-0	+2	-0.50%	4
Administrative/ Supervisory (V to VII)	17	17	16	16	15	-2	-0	-0	-2	-2	-12.26%	17
Clerical (III & IV)	56	60	56	55	55	-3	-2	-2	-5	-1	-7.95%	60
Management & Administrative	75	81	76	76	74	-5	-2	-2	-7	-0	-8.51%	81
Support	32	32	29	29	29	-2	-1	-1	-3	-4	-9.54%	30
Maintenance/ Technical	11	9	10	10	10	+1	+0	+0	+1	-1	11.00%	10
General Support	43	41	39	39	39	-2	-1	-1	-2	-5	-4.98%	40
Health Care Assistants	75	97	88	87	85	-9	-3	-3	-12	+10	-12.29%	92
Care, other	2	2	3	3	3	+1	+0	+0	+1	+2	40.65%	4
Patient & Client Care	77	100	91	90	89	-8	-3	-3	-11	+12	-10.98%	96



HSE Midwest: FEB 2025

Primary Care

FEB 2025	WTE DEC 2019	WTE DEC 2023	WTE DEC 2024	WTE JAN 2025	WTE FEB 2025	WTE Change 2024	WTE Change 2025	WTE Change JAN 2025	WTE Change Dec 2023 to FEB 2025	WTE Change Dec 2019 to FEB 2025	% WTE Change Dec 2023 to FEB 2025	No. FEB 2025
Total Primary Care	764	889	1,111	1,116	1,114	+222	+4	+4	+225	+351	25.35%	1,331
Consultants	2	2	1	1	2	-1	+0	+0	-0	-0	-15.93%	3
Registrars	24	32	33	35	35	+1	+2	+2	+3	+11	9.42%	35
SHO/ Interns	6									-6	-100.00%	
Medical/ Dental, other	52	48	46	46	46	-2	-1	-1	-2	-7	-4.67%	61
Medical & Dental	84	82	81	82	82	-1	+1	+1	+0	-2	0.60%	99
Nurse/ Midwife Manager	19	29	48	51	50	+20	+2	+2	+22	+32	75.72%	57
Nurse/ Midwife Specialist & AN/MP	2	17	42	42	43	+25	+0	+0	+26	+41	152.21%	51
Staff Nurse/ Staff Midwife	56	81	118	118	117	+37	-1	-1	+36	+62	44.92%	155
Public Health Nurse	126	125	129	131	130	+4	+1	+1	+5	+4	3.93%	155
Post-registration Nurse/ Midwife Student		14	6	6	6	+6		+0	+0.8%	-8	-58.33%	6
Nursing/ Midwifery Student		14	6	6	6	-8	+0	+0	-8	+6	-58.33%	6
Nursing/ Midwifery other			2	2	2	+2	+0	+0	+2	+2	-100.00%	4
Nursing & Midwifery	203	266	346	350	349	+80	+3	+3	+83	+146	31.04%	428
Dietitians	3	18	18	19	18	+15	+536.1%	+0	+1.7%	+0	1.25%	21
Occupational Therapists	29	54	64	66	66	+37	+128.7%	+1	+1.9%	+12	22.49%	77
Orthoptists		1	1	1	1	+1		+0	+0.0%	-0	-20.00%	1
Physiotherapists	30	62	67	68	67	+37	+126.0%	-0	-0.5%	+5	7.45%	77
Podiatrists & Chiropodists	2	3	6	6	5	+3	+172.5%	-0	-6.7%	+3	84.75%	6
Speech & Language Therapists	23	52	44	45	45	+22	+98.0%	+1	+2.0%	-7	-13.19%	55
Therapy Professions	86	189	200	204	202	+11	+2	+2	+12	+116	6.54%	237
Health Science/ Diagnostics	5	5	4	5	5	-0	+0	+0	-0	-0	-6.71%	5
Social Care	1									-1	-100.00%	
Pharmacy	1	2	5	6	5	+3	-1	-1	+3	+4	125.00%	8
Psychologists	15	33	43	43	43	+9	+0	+0	+9	+27	28.16%	45
Social Workers	11	11	20	20	20	+9	-0	-0	+9	+9	84.92%	24
H&SC, Other	11	12	12	12	12	+0	-0	-0	+0	+1	0.34%	14
Health & Social Care Professionals	129	252	284	288	285	+32	+1	+1	+33	+156	13.10%	333
Management (VIII & above)	23	11	22	20	20	+11	-1	-1	+9	-3	85.60%	21
Administrative/ Supervisory (V to VII)	54	30	42	44	45	+12	+3	+3	+14	-9	47.71%	48
Clerical (III & IV)	156	156	175	171	172	+19	-3	-3	+16	+16	10.06%	198
Management & Administrative	234	197	239	235	237	+41	-2	-2	+39	+3	19.98%	267
Support	13	10	45	45	44	+35	-1	-1	+34	+31	338.70%	69
Maintenance/ Technical	30		6	6	7	+6	+1	+1	+7	-23	-100.00%	7
General Support	43	10	51	51	51	+41	+0	+0	+41	+8	407.80%	76
Health Care Assistants	22	28	53	54	53	+25	-0	-0	+25	+31	89.73%	62
Care, other	49	53	57	56	57	+3	-0	-0	+3	+8	6.23%	66
Patient & Client Care	71	81	110	110	110	+29	-0	-0	+28	+39	34.89%	128

HSE Midwest: FEB 2025

Older People

FEB 2025	WTE DEC 2019	WTE DEC 2023	WTE DEC 2024	WTE JAN 2025	WTE FEB 2025	WTE Change 2024	WTE Change 2025	WTE Change JAN 2025	WTE Change Dec 2023 to FEB 2025	WTE Change Dec 2019 to FEB 2025	% WTE Change Dec 2023 to FEB 2025	No. FEB 2025
Total Older People	974	1,320	1,321	1,311	1,307	+2	-15	-15	-13	+332	-1.01%	1,573
Consultants	1	2	1	1	1	-1	-0	-0	-1	-0	-59.02%	1
Registrars		2	3	3	3	+1	+0	+0	+1	+3	50.00%	3
SHO/ Interns		3	3	2	2	+0	-1	-1	-1	+2	-21.33%	3
Medical/ Dental, other	5	5	4	4	4	-1	-0	-0	-1	-1	-20.00%	4
Medical & Dental	6	12	11	10	10	-0	-1	-1	-2	+4	-14.54%	11
Nurse/ Midwife Manager	64	74	70	70	70	-4	+0	+0	-4	+6	-4.99%	73
Nurse/ Midwife Specialist & AN/MP	2	13	14	15	13	+1	-1	-1	+1	+12	5.73%	15
Staff Nurse/ Staff Midwife	239	276	273	268	269	-3	-4	-4	-7	+30	-2.56%	304
Public Health Nurse	1		1	1	1	+1	+0	+0	+1	+0	-100.00%	1
Nursing & Midwifery	305	363	358	353	354	-5	-4	-4	-9	+48	-2.49%	393
Dietitians		2	3	3	3	+3		+0	+0.0%	+1	65.75%	3
Occupational Therapists	12	21	15	16	15	+3	+21.7%	-0	-0.6%	-6	-26.93%	18
Physiotherapists	10	17	16	16	16	+6	+53.7%	+0	+0.3%	-1	-6.85%	19
Podiatrists & Chiropodists	3	3	4	4	3	-1	-20.8%	-1	-27.4%	+0	0.00%	3
Speech & Language Therapists	2	7	3	4	4	+2	+142.0%	+1	+22.6%	-3	-47.59%	4
Therapy Professions	28	49	41	42	40	-9	-0	-0	-9	+13	-18.14%	47
Health Science/ Diagnostics	1	1	1	1	1	+0	-0	-0	-0	-0	-11.43%	2
Pharmacy	1	1	1	1	1	+0	+0	+0	+0	+0	0.00%	1
Psychologists		1	1	1	1	+0	+0	+0	+0	+1	7.69%	1
Social Workers	7	2	2	2	2	+0	+0	+0	+0	-5	0.00%	2
Health & Social Care Professionals	36	54	45	47	45	-9	-0	-0	-9	+8	-16.66%	53
Management (VIII & above)	6	9	10	10	10	+1	+0	+0	+1	+4	6.56%	10
Administrative/ Supervisory (V to VII)	21	28	26	25	24	-3	-1	-1	-4	+4	-14.33%	26
Clerical (III & IV)	50	68	64	64	63	-4	-0	-0	-5	+14	-6.84%	73
Management & Administrative	76	105	99	99	97	-7	-1	-1	-8	+21	-7.71%	109
Support	64	51	57	56	57	+6	+0	+0	+6	-7	11.57%	67
Maintenance/ Technical	22	22	29	29	30	+6	+1	+1	+7	+8	32.37%	30
General Support	86	74	86	86	87	+12	+2	+2	+13	+1	17.91%	97
Health Care Assistants	454	688	699	693	689	+11	-10	-10	+2	+235	0.26%	883
Care, other	10	25	23	23	24	-1	+1	+1	-0	+14	-1.99%	27
Patient & Client Care	464	712	722	716	714	+10	-9	-9	+1	+249	0.18%	910

HSE Midwest: FEB 2025

Community Health & Wellbeing

FEB 2025	WTE DEC 2019	WTE DEC 2023	WTE DEC 2024	WTE JAN 2025	WTE FEB 2025	WTE Change 2024	WTE Change 2025	WTE Change JAN 2025	WTE Change Dec 2023 to FEB 2025	WTE Change Dec 2019 to FEB 2025	% WTE Change Dec 2023 to FEB 2025	No. FEB 2025
Total Community Health & Wellbeing		41	43	43	43	+1	-0	-0	+1	+43	2.78%	47
Nurse/ Midwife Manager		1	3	3	3	+2	-0	-0	+2	+3	251.28%	3
Staff Nurse/ Staff Midwife		1				-1			-1		-100.00%	
Public Health Nurse			1	1	1	+1	+0	+0	+1	+1	-100.00%	1
Nursing & Midwifery		1	4	4	4	+2	-0	-0	+2	+4	149.30%	4
Therapy Professions		2	2	2	2	+0	+0	+0	+0	+2	0.00%	2
H&SC, Other		3	3	3	3	+0	+0	+0	+0	+3	0.00%	3
Health & Social Care Professionals		5	5	5	5	+0	+0	+0	+0	+5	0.00%	5
Management (VIII & above)		2	2	2	2	-0	-0	-0	-0	+2	-15.68%	2
Administrative/ Supervisory (V to VII)		7	8	8	8	+1	+0	+0	+1	+8	12.41%	8
Clerical (III & IV)		7	7	7	7	-0	+0	+0	-0	+7	-1.40%	8
Management & Administrative		16	16	16	16	+0	-0	-0	+0	+16	2.80%	18
Care, other		20	18	18	18	-1	-0	-0	-1	+18	-7.17%	20
Patient & Client Care		20	18	18	18	-1	-0	-0	-1	+18	-7.17%	20



HSE Midwest: FEB 2025

CHO Operations

FEB 2025	WTE DEC 2019	WTE DEC 2023	WTE DEC 2024	WTE JAN 2025	WTE FEB 2025	WTE Change 2024	WTE Change 2025	WTE Change JAN 2025	WTE Change Dec 2023 to FEB 2025	WTE Change Dec 2019 to FEB 2025	% WTE Change Dec 2023 to FEB 2025	No. FEB 2025
Total CHO Operations		205	173	168	164	-33	-8	-8	-41	+164	-20.00%	170
Nurse/ Midwife Manager		2	3	3	3	+1	+0	+0	+1	+3	30.00%	3
Nurse/ Midwife Specialist & AN/MP		3	2	2	2	-1	+0	+0	-1	+2	-34.88%	2
Nursing & Midwifery		5	4	4	4	-0	+0	+0	-0	+4	-6.55%	5
Therapy Professions		1				-1			-1		-100.00%	
Pharmacy		1	1	1	1	+0	-0	-0	-0	+1	-5.88%	1
Social Workers		8	8	8	8	-0	-0	-0	-1	+8	-8.55%	8
Health & Social Care Professionals		10	9	9	9	-1	-1	-1	-2	+9	-17.23%	9
Management (VIII & above)		18	14	15	15	-3	+0	+0	-3	+15	-17.41%	15
Administrative/ Supervisory (V to VII)		81	66	62	60	-16	-5	-5	-21	+60	-25.75%	62
Clerical (III & IV)		53	42	41	40	-11	-1	-1	-13	+40	-24.08%	42
Management & Administrative		152	121	117	115	-30	-6	-6	-37	+115	-24.20%	119
Maintenance/ Technical		37	38	38	36	+1	-1	-1	-0	+36	-0.76%	37
General Support		37	38	38	36	+1	-1	-1	-0	+36	-0.76%	37
Health Care Assistants		2				-2			-2		-100.00%	
Patient & Client Care		2				-2			-2		-100.00%	



HSE Midwest: FEB 2025

FEB 2025	WTE DEC 2019	WTE DEC 2023	WTE DEC 2024	WTE JAN 2025	WTE FEB 2025	WTE Change 2024	WTE Change 2025	WTE Change JAN 2025	WTE Change Dec 2023 to FEB 2025	WTE Change Dec 2019 to FEB 2025	% WTE Change Dec 2023 to FEB 2025	No. FEB 2025
Overall	8,503	11,017	11,413	11,466	11,503	+397	+90	+90	+487	+3,000	4.42%	13,035
Health Service Executive	6,490	8,724	8,703	8,713	8,734	-21	+31	+31	+10	+2,243	0.11%	9,712
Section 38 Hospitals	311	381	405	406	406	+24	+1	+1	+25	+94	6.45%	441
Section 38 Voluntary Agencies	1,701	1,911	2,306	2,347	2,364	+395	+58	+58	+453	+663	23.69%	2,882



HSE Midwest: FEB 2025

Health Service Executive

FEB 2025	WTE DEC 2019	WTE DEC 2023	WTE DEC 2024	WTE JAN 2025	WTE FEB 2025	WTE Change 2024	WTE Change 2025	WTE Change JAN 2025	WTE Change Dec 2023 to FEB 2025	WTE Change Dec 2019 to FEB 2025	% WTE Change Dec 2023 to FEB 2025	No. FEB 2025
Total Health Service Executive	6,490	8,724	8,703	8,713	8,734	-21	+31	+31	+10	+2,243	0.11%	9,712
Consultants	184	252	269	272	274	+17	+5	+5	+23	+91	8.95%	294
Registrars	223	308	334	342	342	+26	+7	+7	+33	+119	10.85%	349
SHO/ Interns	215	326	340	330	330	+14	-10	-10	+4	+115	1.32%	332
Medical/ Dental, other	58	54	52	51	50	-2	-1	-1	-3	-8	-6.08%	67
Medical & Dental	679	940	995	995	997	+55	+2	+2	+57	+317	6.07%	1,042
Nurse/ Midwife Manager	471	627	639	646	647	+12	+8	+8	+20	+176	3.27%	686
Nurse/ Midwife Specialist & AN/MP	111	223	230	233	232	+7	+2	+2	+9	+121	4.01%	245
Staff Nurse/ Staff Midwife	1,673	2,040	2,063	2,056	2,063	+23	+0	+0	+23	+390	1.12%	2,299
Public Health Nurse	127	125	131	133	132	+6	+1	+1	+7	+5	5.36%	157
<i>Post-registration Nurse/ Midwife Student</i>	16	20	11	11	11	-9	+0	+0	-9	-5	-44.02%	11
<i>Pre-registration Nurse/ Midwife Intern</i>	12	1	3	28	57	+1	+54	+54	+55	+45	3,737.16%	114
Nursing/ Midwifery Student	28	21	14	39	68	-7	+54	+54	+47	+40	220.82%	125
Nursing/ Midwifery other	10	14	13	13	15	-1	+1	+1	+1	+5	4.39%	17
Nursing & Midwifery	2,420	3,050	3,090	3,120	3,156	+40	+67	+67	+106	+736	3.48%	3,529
<i>Dietitians</i>	19	45	49	50	50	+4	+1	+1	+5	+31	10.95%	56
<i>Occupational Therapists</i>	86	126	130	132	131	+4	+1	+1	+5	+45	4.21%	148
<i>Orthoptists</i>		2	2	2	2	-0	+0	+0	-0	+2	-10.00%	2
<i>Physiotherapists</i>	100	154	161	161	159	+8	-2	-2	+5	+59	3.50%	181
<i>Podiatrists & Chiropodists</i>	8	8	12	12	11	+4	-1	-1	+3	+2	39.61%	12
<i>Speech & Language Therapists</i>	52	85	70	74	76	-14	+5	+5	-9	+24	-10.68%	89
Therapy Professions	265	419	424	431	428	+5	+4	+4	+9	+163	2.25%	488
Health Science/ Diagnostics	246	290	296	296	294	+6	-2	-2	+4	+48	1.23%	322
Social Care	5	2	1	1	2	-1	+1	+1	+0	-3	19.35%	2
Pharmacy	45	64	66	65	66	+2	-0	-0	+2	+21	3.10%	74
Psychologists	114	137	141	142	144	+4	+3	+3	+6	+30	4.61%	153
Social Workers	56	60	65	66	67	+5	+2	+2	+6	+11	10.74%	73
H&SC, Other	29	39	42	42	42	+4	-0	-0	+3	+13	8.51%	47
Health & Social Care Professionals	760	1,011	1,036	1,043	1,042	+25	+7	+7	+31	+282	3.10%	1,159
Management (VIII & above)	61	90	83	83	81	-7	-2	-2	-9	+20	-9.87%	83
Administrative/ Supervisory (V to VII)	192	402	371	368	368	-31	-3	-3	-34	+176	-8.57%	386
Clerical (III & IV)	722	914	883	870	858	-31	-24	-24	-55	+137	-6.06%	943
Management & Administrative	975	1,406	1,336	1,320	1,307	-69	-29	-29	-99	+332	-7.02%	1,412
Support	357	778	759	760	757	-19	-2	-2	-21	+400	-2.68%	840
Maintenance/ Technical	101	116	119	119	119	+3	+1	+1	+4	+18	3.07%	121
General Support	458	893	878	878	876	-16	-2	-2	-17	+418	-1.93%	961
Health Care Assistants	1,104	1,282	1,229	1,218	1,215	-52	-14	-14	-66	+111	-5.18%	1,452
Care, other	94	143	140	138	140	-3	+1	+1	-3	+46	-1.86%	157
Patient & Client Care	1,198	1,425	1,369	1,356	1,356	-56	-13	-13	-69	+157	-4.84%	1,609



Section 38 Hospitals

FEB 2025	WTE DEC 2019	WTE DEC 2023	WTE DEC 2024	WTE JAN 2025	WTE FEB 2025	WTE Change 2024	WTE Change 2025	WTE Change JAN 2025	WTE Change Dec 2023 to FEB 2025	WTE Change Dec 2019 to FEB 2025	% WTE Change Dec 2023 to FEB 2025	No. FEB 2025
Total Section 38 Hospitals	311	381	405	406	406	+24	+1	+1	+25	+94	6.45%	441
Consultants	8	8	8	8	8	+0	+0	+0	+0	-0	0.00%	8
Registrars	9	11	13	15	15	+2	+2	+2	+4	+6	36.36%	15
SHO/ Interns	7	11	16	14	14	+5	-2	-2	+3	+7	27.27%	14
Medical & Dental	24	30	37	37	37	+7	+0	+0	+7	+13	23.71%	37
Nurse/ Midwife Manager	24	32	39	39	39	+6	+0	+0	+7	+14	20.29%	41
Nurse/ Midwife Specialist & AN/MP	8	10	10	10	10	-0	+0	+0	-0	+2	-4.80%	10
Staff Nurse/ Staff Midwife	93	97	109	109	107	+12	-2	-2	+11	+14	10.98%	117
Nursing/ Midwifery Student		1				-1			-1		-100.00%	
Nursing/ Midwifery other	1	1	1	1	1	+0	+0	+0	+0	+0	0.00%	1
Nursing & Midwifery	127	141	158	158	157	+17	-2	-2	+16	+30	11.12%	169
Therapy Professions	5	9	10	10	10	+1	-0	-0	+1	+5	16.13%	12
Health Science/ Diagnostics	12	12	13	13	13	+0	+0	+0	+1	+1	4.37%	17
Pharmacy	4	7	9	9	9	+2	+0	+0	+2	+4	33.33%	11
Health & Social Care Professionals	21	28	32	32	32	+4	+0	+0	+4	+11	14.93%	40
Management (VIII & above)	7	7	7	7	7	+0	+0	+0	+0	+0	0.00%	7
Administrative/ Supervisory (V to VII)	16	28	25	25	24	-3	-1	-1	-4	+9	-13.97%	25
Clerical (III & IV)	45	54	54	55	56	+1	+2	+2	+3	+11	4.87%	60
Management & Administrative	68	89	86	87	87	-2	+1	+1	-1	+19	-1.49%	92
Support	40	46	43	43	43	-2	-0	-0	-2	+3	-5.33%	49
Maintenance/ Technical	2	2	2	2	2	+0	+0	+0	+0	+0	0.00%	2
General Support	42	48	45	45	45	-2	-0	-0	-2	+3	-5.11%	51
Health Care Assistants	29	46	47	47	48	+1	+2	+2	+3	+19	5.59%	52
Care, other	1	1				-1			-1	-1	-100.00%	
Patient & Client Care	30	47	47	47	48	-0	+2	+2	+2	+18	3.33%	52



Section 38 Voluntary Agencies

FEB 2025	WTE DEC 2019	WTE DEC 2023	WTE DEC 2024	WTE JAN 2025	WTE FEB 2025	WTE Change 2024	WTE Change 2025	WTE Change JAN 2025	WTE Change Dec 2023 to FEB 2025	WTE Change Dec 2019 to FEB 2025	% WTE Change Dec 2023 to FEB 2025	No. FEB 2025
Total Section 38 Voluntary Agencies	1,701	1,911	2,306	2,347	2,364	+395	+58	+58	+453	+663	23.69%	2,882
Consultants	1	0	0	0	0	-0	-0	-0	-0	-1	-57.14%	1
Medical/ Dental, other	1	0	0	0	0	+0	+0	+0	+0	-0	0.00%	1
Medical & Dental	2	1	1	1	1	-0	-0	-0	-0	-1	-18.18%	2
Nurse/ Midwife Manager	76	80	104	108	109	+24	+5	+5	+29	+33	35.96%	116
Nurse/ Midwife Specialist & AN/MP	13	14	36	35	36	+22	+0	+0	+22	+23	162.85%	44
Staff Nurse/ Staff Midwife	247	253	327	338	339	+74	+12	+12	+86	+92	34.11%	396
Nursing/ Midwifery Student	12	9	7	8	8	-2	+1	+1	-1	-4	-11.11%	16
Nursing/ Midwifery other	4	3	5	5	5	+2	+0	+0	+2	+1	73.33%	7
Nursing & Midwifery	351	358	479	494	497	+120	+18	+18	+138	+145	38.61%	579
Therapy Professions	28	31	55	57	57	+23	+2	+2	+25	+28	81.05%	65
Social Care	240	271	280	286	283	+9	+2	+2	+11	+43	4.23%	342
Pharmacy			3	3	3	+3	+0	+0	+3	+3	-100.00%	5
Psychologists	12	12	15	15	13	+3	-1	-1	+2	+1	15.79%	15
Social Workers	15	17	22	21	23	+5	+1	+1	+6	+8	37.52%	26
H&SC, Other	10	10	10	10	10	+1	-0	-0	+0	-0	4.30%	14
Health & Social Care Professionals	305	340	384	391	388	+44	+4	+4	+48	+82	14.05%	467
Management (VIII & above)	6	12	24	22	22	+12	-1	-1	+11	+17	90.18%	23
Administrative/ Supervisory (V to VII)	27	36	51	52	52	+16	+0	+0	+16	+24	45.63%	54
Clerical (III & IV)	39	38	70	70	75	+32	+5	+5	+37	+37	95.32%	89
Management & Administrative	72	86	146	144	150	+60	+4	+4	+64	+78	74.02%	166
Support	53	51	92	92	92	+41	+0	+0	+41	+39	81.68%	118
Maintenance/ Technical	12	11	17	17	18	+6	+1	+1	+7	+6	63.12%	20
General Support	65	62	109	109	110	+47	+1	+1	+48	+45	78.35%	138
Health Care Assistants	759	888	996	1,019	1,027	+108	+31	+31	+139	+268	15.68%	1,306
Care, other	146	177	192	189	192	+15	+0	+0	+15	+46	8.73%	224
Patient & Client Care	906	1,064	1,188	1,208	1,219	+123	+31	+31	+155	+313	14.53%	1,530



HSE Midwest by 38 Hospitals & Voluntary Agencies FEB 2025

FEB 2025	WTE DEC 2019	WTE DEC 2023	WTE DEC 2024	WTE JAN 2025	WTE FEB 2025	WTE Change 2024	WTE Change 2025	WTE Change JAN 2025	WTE Change Dec 2023 to FEB 2025	WTE Change Dec 2019 to FEB 2025	% WTE Change Dec 2023 to FEB 2025	No. FEB 2025
Overall	2,013	2,292	2,711	2,753	2,770	+418	+59	+17	+477	+757	20.82%	3,323
St. John's Hospital Limerick	311	381	405	406	406	+24	+1	+0	+25	+94	6.45%	441
Bros. of Charity Limerick	520	603	628	632	636	+25	+9	+5	+33	+117	5.55%	752
Bros. of Charity Clare	348	466	474	486	497	+8	+23	+12	+31	+149	6.69%	635
Avista Limerick	543	541	578	597	593	+37	+15	-4	+52	+50	9.68%	681
Avista Roscrea	290	302	314	320	322	+13	+8	+1	+20	+32	6.73%	410
Miford Care Centre			242	244	247	+242	+5	+3	+247	+247	-100.00%	317
Miford Care Centre OP			70	69	69	+70	-1	-0	+69	+69	-100.00%	87



HSE Midwest Employment Report by Grade Group: FEB 2025

FEB 2025	WTE DEC 2019	WTE DEC 2023	WTE DEC 2024	WTE JAN 2025	WTE FEB 2025	WTE Change 2024	WTE Change 2025	WTE change since DEC 2024	WTE Change Dec 2023 to FEB 2025	WTE Change Dec 2019 to FEB 2025	% WTE Change Dec 2023 to FEB 2025	No. FEB 2025
Overall	8,503	11,017	11,413	11,466	11,503	+397	+90	+90	+487	+3,000	4.42%	13,035
Consultant Anaesthesia	18	23	28	27	27	+5	-2	-2	+4	+9	15.18%	28
Consultant Emergency Medicine	7	13	14	14	14	+1	+0	+0	+1	+7	8.90%	16
Consultant Medicine	55	78	80	83	85	+2	+5	+5	+7	+30	8.64%	92
Consultant Obstetrics & Gynaecology	14	15	15	15	15	+0	+0	+0	+0	+2	0.00%	16
Consultant Paediatrics	12	19	26	26	27	+7	+1	+1	+8	+15	42.79%	31
Consultant Pathology	13	16	17	15	15	+0	-2	-2	-1	+2	-8.76%	15
Consultant Psychiatry	23	29	27	29	29	-2	+2	+2	+0	+6	0.79%	32
Consultant Radiology	15	17	20	20	20	+3	-0	-0	+3	+5	16.31%	21
Consultant Surgery	35	48	50	50	50	+1	-0	-0	+1	+15	2.58%	52
Consultants	192	260	277	279	282	+17	+5	+5	+22	+90	8.63%	303
Registrar	162	227	247	258	258	+20	+11	+11	+31	+97	13.66%	264
Senior Registrar	10	11	14	14	15	+3	+1	+1	+4	+5	35.45%	15
Specialist Registrar	61	81	86	86	83	+5	-3	-3	+3	+23	3.10%	85
Registrars	232	319	347	357	357	+28	+9	+9	+37	+125	11.73%	364
Interns	56	75	79	78	77	+4	-2	-2	+2	+21	3.00%	78
Senior House Officer	166	262	277	266	267	+15	-10	-10	+5	+101	1.93%	268
SHO/ Interns	222	337	356	344	344	+19	-12	-12	+7	+122	2.17%	346
Dentists	27	25	25	25	24	-1	-0	-0	-1	-3	-4.18%	28
Other Medical	32	29	27	27	27	-1	-1	-1	-2	-6	-7.66%	40
Medical/ Dental, other	59	54	52	51	51	-2	-1	-1	-3	-8	-6.03%	68
Medical & Dental	705	970	1032	1032	1034	+62	+2	+2	+64	+329	6.59%	1,081
Clinical Nurse/ Midwife Manager 1	144	182	194	199	200	+13	+6	+6	+19	+56	10.23%	215
Clinical Nurse/ Midwife Manager 2	293	391	403	408	408	+13	+5	+5	+17	+115	4.40%	434
Clinical Nurse/ Midwife Manager 3	30	37	47	47	49	+10	+2	+2	+12	+20	33.49%	52
Director Nursing/Midwifery, Assistant	83	107	113	114	113	+6	+0	+0	+7	+30	6.25%	118
Director of Nursing/Midwifery	22	23	24	24	24	+1	-0	-0	+1	+2	4.19%	24
Nurse/ Midwife Manager	572	739	782	793	794	+43	+13	+13	+56	+223	7.54%	843
Advanced Nurse/ Midwife Practitioner	16	37	48	47	48	+11	+0	+0	+11	+32	29.10%	50
Adv. Nurse/ Midwife, Candidate	8	41	42	43	41	+0	-1	-1	-1	+33	-1.95%	41
Clinical Nurse/ Midwife Spec., Candidate					1		+1	+1	+1	+1	-100.00%	1
Clinical Nurse/ Midwife Specialist	108	168	185	188	187	+18	+2	+2	+20	+80	11.73%	207
Nurse/ Midwife Specialist & AN/MP	132	246	275	278	277	+29	+2	+2	+31	+145	12.44%	299
Nursing Bank		1				-1			-1		-100.00%	
Staff Midwives	145	120	116	118	117	-4	+1	+1	-2	-27	-1.87%	142
Staff Nurse [Intellectual Disability]	209	191	200	211	213	+9	+13	+13	+22	+4	11.30%	242
Staff Nurse [Psychiatric]	237	248	255	251	252	+6	-3	-3	+4	+15	1.50%	274
Staff Nurses [General/ Children's]	1,422	1,830	1,928	1,923	1,927	+98	-1	-1	+97	+505	5.31%	2,154
Staff Nurse/ Staff Midwife	2,013	2,390	2,499	2,503	2,509	+109	+11	+11	+120	+496	5.01%	2,812
Public Health Nurse	127	125	131	133	132	+6	+1	+1	+7	+5	5.36%	157
Public Health Nurse	127	125	131	133	132	+6	+1	+1	+7	+5	5.36%	157
Nursing/ Midwifery awaiting registration		1				-1			-1		-100.00%	
Post-registration Nurse/ Midwife Student	16	20	11	11	11	-9	+0	+0	-9	-5	-44.02%	11
Pre-registration Nurse/ Midwife Intern	24	10	10	36	65	-1	+55	+55	+54	+41	518.23%	130
Nursing/ Midwifery Student	39	31	21	47	76	-10	+55	+55	+45	+36	143.46%	141
Nursing Education/Clinical	14	18	19	19	21	+1	+2	+2	+3	+7	15.57%	25
Other Nursing/ Midwifery	1									-1	-100.00%	
Nursing/ Midwifery other	15	18	19	19	21	+1	+2	+2	+3	+6	15.57%	25
Nursing & Midwifery	2898	3549	3726	3773	3809	+177	+83	+83	+260	+912	7.33%	4,277
Dietitians	20	46	51	53	52	+5	+1	+1	+6	+33	13.43%	59
Occupational Therapists	95	138	155	160	158	+17	+4	+4	+20	+63	14.50%	180
Orthoptists		2	2	2	2	-0	+0	+0	-0	+2	-10.00%	2
Physiotherapists	112	168	185	184	181	+16	-3	-3	+13	+70	7.85%	206
Podiatrists & Chiropodists	8	8	12	12	11	+4	-1	-1	+3	+2	39.61%	12
Speech & Language Therapists	63	96	84	88	90	-12	+6	+6	-6	+28	-6.36%	106



FEB 2025	WTE DEC 2019	WTE DEC 2023	WTE DEC 2024	WTE JAN 2025	WTE FEB 2025	WTE Change 2024	WTE Change 2025	WTE change since DEC 2024	WTE Change Dec 2023 to FEB 2025	WTE Change Dec 2019 to FEB 2025	% WTE Change Dec 2023 to FEB 2025	No. FEB 2025
Overall	8,503	11,017	11,413	11,466	11,503	+397	+90	+90	+487	+3,000	4.42%	13,035
Therapy Professions	298	459	488	497	495	+30	+6	+6	+36	+197	7.89%	565
Audiology	6	7	4	5	5	-2	+0	+0	-2	-1	-33.67%	5
Biochemists	7	5	5	5	5	-0	+0	+0	+0	-2	0.77%	6
Cardiac Physiologists	16	18	19	19	19	+1	-0	-0	+1	+3	6.41%	20
Clinical Engineering	6	20	18	18	18	-3	+1	+1	-2	+13	-9.77%	19
E.C.G. Technicians	2	2	3	3	3	+1	-0	-0	+1	+1	41.94%	3
Medical Science	129	134	139	138	136	+5	-3	-3	+2	+7	1.20%	150
Neuro-Physiologists	1	1	1	1	1	+0	+0	+0	+0	-0	0.00%	1
Phlebotomists	1	1	1	1	1	+0	+0	+0	+0	+0	0.00%	1
Physicists	2	4	5	5	6	+1	+1	+1	+2	+4	50.00%	6
Radiographers	81	101	104	105	104	+3	-0	-0	+3	+23	2.64%	118
Respiratory Physiologists	4	3	3	3	3	+0	+0	+0	+0	-1	9.09%	3
Vascular Physiologists	3	6	6	6	6	+0	-0	-0	-0	+3	-0.98%	7
Health Science/ Diagnostics	258	303	309	309	307	+6	-2	-2	+4	+49	1.36%	339
Social Care	245	273	281	287	284	+9	+3	+3	+12	+40	4.32%	344
Social Care	245	273	281	287	284	+9	+3	+3	+12	+40	4.32%	344
Pharmacists	28	37	41	41	41	+4	+0	+0	+4	+13	10.56%	47
Pharmacy Technicians	21	33	36	36	36	+3	-0	-0	+3	+15	8.28%	43
Pharmacy	50	70	77	77	77	+7	-0	-0	+7	+27	9.49%	90
Psychologists	127	149	156	157	157	+7	+1	+1	+8	+31	5.48%	168
Psychologists	127	149	156	157	157	+7	+1	+1	+8	+31	5.48%	168
Social Workers	71	77	87	87	90	+10	+2	+2	+13	+19	16.51%	99
Social Workers	71	77	87	87	90	+10	+2	+2	+13	+19	16.51%	99
Counsellor Therapists	13	17	18	18	18	+1	+0	+0	+2	+6	9.32%	20
Dental Hygienists	6	6	7	6	6	+0	-0	-0	+0	+0	0.31%	8
HSCP Trainees/Students	5	9	8	8	8	-1	+0	+0	-1	+3	-10.51%	8
Other Health & Social Care	8	7	9	9	9	+2	-0	-0	+2	+1	32.78%	11
Play Therapists/ Specialists	7	10	11	11	11	+1	-0	-0	+1	+3	9.23%	14
H&SC, Other	40	48	52	52	52	+4	-0	-0	+4	+13	7.67%	61
Health & Social Care Professionals	1087	1379	1452	1466	1462	+73	+10	+10	+83	+375	6.04%	1,666
CEO/Chief Officer	4	5	5	5	5	-0	+0	+0	+0	+1	0.00%	5
General Managers	21	28	28	28	29	-0	+1	+1	+1	+8	2.58%	29
National Director, Assistant	5	4	2	2	1	-2	-1	-1	-3	-4	-75.00%	1
Other Executives	9	13	14	14	14	+1	-0	-0	+1	+5	7.08%	14
VIII	35	59	65	63	62	+6	-3	-3	+3	+27	5.40%	64
Management (VIII & above)	74	108	113	112	110	+5	-3	-3	+2	+37	1.66%	113
Middle Management (V-VII)	228	461	442	440	439	-18	-4	-4	-22	+211	-4.80%	460
Other Administrative	7	5	5	5	5	+0	+0	+0	+0	-2	0.00%	5
Administrative/ Supervisory (V to VII)	235	466	447	445	444	-18	-4	-4	-22	+209	-4.75%	465
General Administrative (III & IV)	806	1,006	1,007	995	990	+1	-18	-18	-16	+184	-1.60%	1,092
Clerical (III & IV)	806	1,006	1,007	995	990	+1	-18	-18	-16	+184	-1.60%	1,092
Management & Administrative	1114	1580	1568	1552	1544	-12	-24	-24	-36	+429	-2.31%	1,670
Catering	56	113	303	300	300	+190	-3	-3	+187	+244	166.26%	348
Household Services	150	443	281	281	279	-162	-1	-1	-163	+129	-36.87%	306
Other Labs & Associated	31	36	33	35	36	-3	+3	+3	+0	+6	0.41%	48
Other Support	78	88	84	82	82	-4	-2	-2	-6	+4	-6.87%	103
Portering	134	195	194	197	195	-1	+1	+1	-0	+61	-0.01%	202
Support	449	874	895	895	892	+20	-2	-2	+18	+443	2.08%	1,007
Maintenance	114	126	133	134	135	+8	+2	+2	+10	+21	7.60%	139
Technical Services	2	3	4	4	4	+1	+0	+0	+1	+2	33.33%	4
Maintenance/ Technical	116	129	137	138	139	+9	+2	+2	+11	+23	8.20%	143
General Support	565	1003	1032	1033	1032	+29	-0	-0	+29	+467	2.87%	1,150
Attendant/ Aide	787	499	440	434	432	-58	-8	-8	-66	-354	-13.31%	483
Health Care Assistant/ Care Assistant	912	1,306	1,426	1,448	1,459	+120	+32	+32	+152	+546	11.66%	1,776
Health Care Assistant /Home Support	176	364	356	353	350	-8	-6	-6	-14	+174	-3.86%	497
Health & Social Care Assistants	18	46	48	49	50	+2	+1	+1	+4	+31	7.68%	54
Health Care Assistants	1,893	2,215	2,271	2,284	2,290	+57	+19	+19	+75	+397	3.40%	2,810
Ambulance Education											-100.00%	

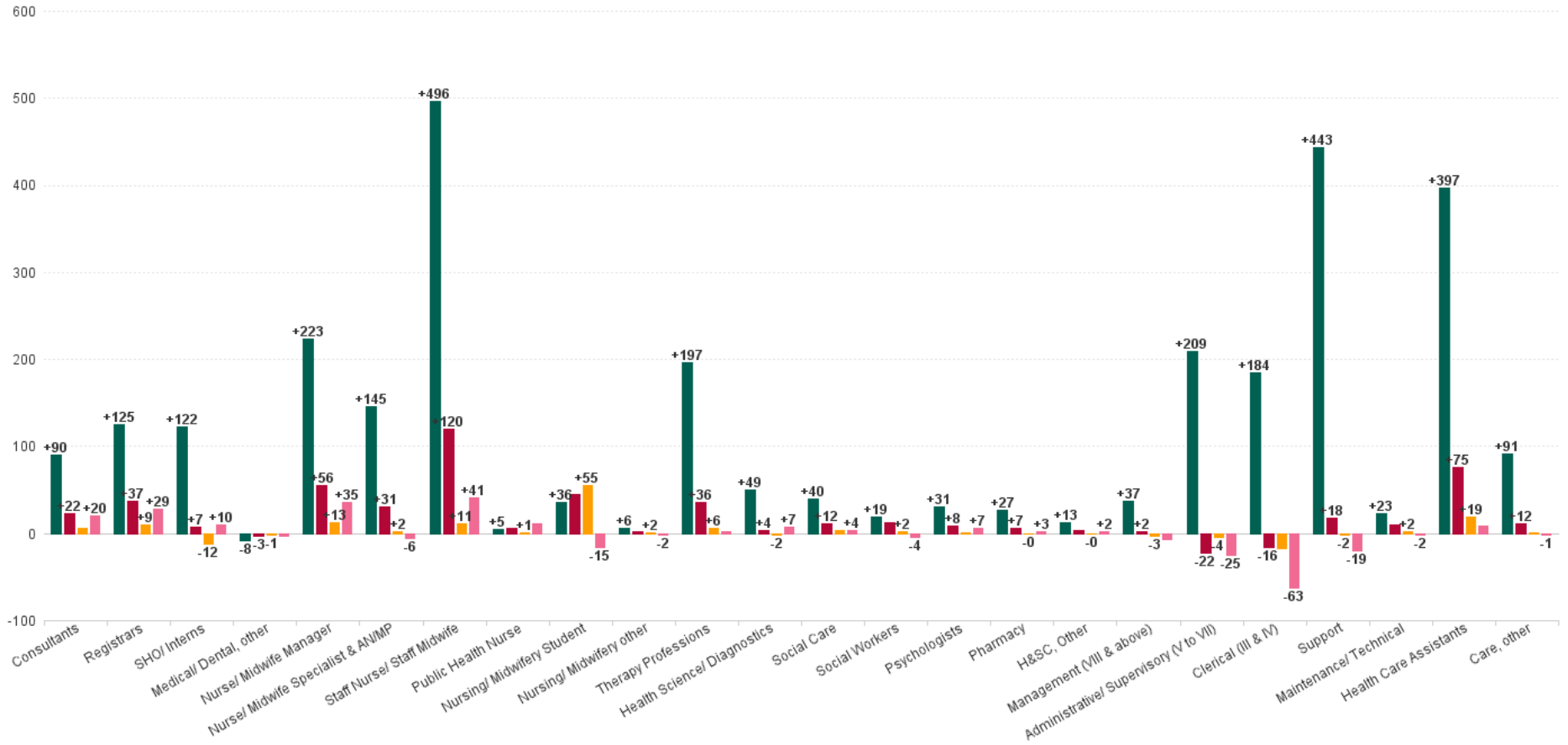


FEB 2025	WTE DEC 2019	WTE DEC 2023	WTE DEC 2024	WTE JAN 2025	WTE FEB 2025	WTE Change 2024	WTE Change 2025	WTE change since DEC 2024	WTE Change Dec 2023 to FEB 2025	WTE Change Dec 2019 to FEB 2025	% WTE Change Dec 2023 to FEB 2025	No. FEB 2025
Overall	8,503	11,017	11,413	11,466	11,503	+397	+90	+90	+487	+3,000	4.42%	13,035
Health Promotion		19	17	17	17	-1	-0	-0	-1	+17	-7.34%	19
Home Care Services	13	31	31	30	32	-1	+1	+1	+0	+18	1.22%	36
Other Care Grades	71	88	94	92	94	+7	-1	-1	+6	+23	6.98%	106
Pastoral Care	7	5	7	7	8	+2	+1	+1	+3	+1	48.20%	10
Workshop Services	150	178	182	179	182	+4	+0	+0	+4	+32	2.31%	210
Care, other	241	321	332	327	333	+11	+1	+1	+12	+91	3.67%	381
Patient & Client Care	2134	2536	2603	2611	2623	+67	+20	+20	+87	+489	3.44%	3,191



WTE Change by Staff Group

■ WTE change since DEC 2019
 ■ WTE change since DEC 2023
 ■ WTE change since DEC 2024
 ■ WTE change since FEB 2024



HSE Midwest Employment Report by WTE, Headcount, Gender, Full-Time / Part-Time etc. FEB 2025

FEB 2025	WTE FEB 2025	No. FEB 2025	WTE : No	Number Male	Number Female	Male WTE : No.	Female WTE : No	Perm Count %	Perm Count Male %	Perm Count Female %	Fulltime Count %	Part time Count %	FT Count Male %	FT Count Female %
Total	11,503	13,035	1:0.9	2,371	10,664	1:0.9	1:0.9	85.86%	13.88%	71.98%	70.53%	29.47%	85.91%	67.11%
Consultants	282	303	1:0.9	187	116	1:1	1:0.9	67.66%	40.59%	27.06%	90.10%	9.90%	95.19%	81.90%
Registrars	357	364	1:1	188	176	1:1	1:1	1.10%	0.27%	0.82%	98.08%	1.92%	98.94%	97.16%
SHO/ Interns	344	346	1:1	151	195	1:1	1:1				100.00%		100.00%	100.00%
Medical/ Dental, other	51	68	1:0.7	18	50	1:0.8	1:0.7	82.35%	19.12%	63.24%	50.00%	50.00%	66.67%	44.00%
Medical & Dental	1,034	1,081	1:1	544	537	1:1	1:0.9	24.51%	12.67%	11.84%	93.43%	6.57%	96.88%	89.94%
Nurse/ Midwife Manager	794	843	1:0.9	76	767	1:1	1:0.9	97.15%	8.90%	88.26%	82.56%	17.44%	93.42%	81.49%
Nurse/ Midwife Specialist & AN/MP	277	299	1:0.9	22	277	1:1	1:0.9	99.00%	7.02%	91.97%	81.61%	18.39%	95.45%	80.51%
Staff Nurse/ Staff Midwife	2,509	2,812	1:0.9	228	2,584	1:0.9	1:0.9	98.58%	8.00%	90.58%	73.44%	26.56%	90.79%	71.90%
Public Health Nurse	132	157	1:0.8		157	1:	1:0.8	98.09%		98.09%	70.70%	29.30%		70.70%
Pre-registration Nurse/ Midwife Intern	65	130	1:0.5	9	121	1:0.5	1:0.5	0.77%		0.77%	86.92%	13.08%	100.00%	85.95%
Post-registration Nurse/ Midwife Student	11	11	1:1	1	10	1:1	1:1	54.55%	9.09%	45.45%	90.91%	9.09%	100.00%	90.00%
Nursing/ Midwifery Student	76	141	1:0.5	10	131	1:0.6	1:0.5	4.96%	0.71%	4.26%	87.23%	12.77%	100.00%	86.26%
Nursing/ Midwifery other	21	25	1:0.8		25	1:	1:0.8	100.00%		100.00%	68.00%	32.00%		68.00%
Nursing & Midwifery	3,809	4,277	1:0.9	336	3,941	1:0.9	1:0.9	95.23%	7.53%	87.70%	76.13%	23.87%	91.96%	74.78%
Therapy Professions	495	565	1:0.9	55	510	1:0.9	1:0.9	96.99%	9.56%	87.43%	76.81%	23.19%	87.27%	75.69%
Health Science/ Diagnostics	307	339	1:0.9	80	259	1:1	1:0.9	97.05%	21.83%	75.22%	82.60%	17.40%	92.50%	79.54%
Social Care	284	344	1:0.8	23	321	1:0.9	1:0.8	85.76%	5.23%	80.52%	30.81%	69.19%	21.74%	31.46%
Social Workers	90	99	1:0.9	14	85	1:1	1:0.9	97.98%	13.13%	84.85%	79.80%	20.20%	92.86%	77.65%
Psychologists	157	168	1:0.9	17	151	1:1	1:0.9	42.86%	5.95%	36.90%	88.10%	11.90%	100.00%	86.75%
Pharmacy	77	90	1:0.9	7	83	1:0.9	1:0.9	94.44%	7.78%	86.67%	74.44%	25.56%	71.43%	74.70%
H&SC, Other	52	61	1:0.9	7	54	1:0.9	1:0.8	80.33%	9.84%	70.49%	59.02%	40.98%	71.43%	57.41%
Health & Social Care Professionals	1,462	1,666	1:0.9	203	1,463	1:0.9	1:0.9	88.54%	10.92%	77.61%	69.03%	30.97%	82.27%	67.19%
Management (VIII & above)	110	113	1:1	24	89	1:1	1:1	92.04%	19.47%	72.57%	93.81%	6.19%	100.00%	92.13%
Administrative/ Supervisory (V to VII)	444	465	1:1	72	393	1:1	1:0.9	95.27%	14.41%	80.86%	89.68%	10.32%	93.06%	89.06%
Clerical (III & IV)	990	1,092	1:0.9	96	996	1:1	1:0.9	80.68%	6.32%	74.36%	78.39%	21.61%	96.88%	76.61%
Management & Administrative	1,544	1,670	1:0.9	192	1,478	1:1	1:0.9	85.51%	9.46%	76.05%	82.57%	17.43%	95.83%	80.85%
Support	892	1,007	1:0.9	385	622	1:0.9	1:0.8	93.45%	35.65%	57.80%	77.66%	22.34%	92.47%	68.49%
Maintenance/ Technical	139	143	1:1	142	1	1:1	1:1	97.20%	96.50%	0.70%	97.20%	2.80%	97.18%	100.00%



FEB 2025	WTE FEB 2025	No. FEB 2025	WTE : No	Number Male	Number Female	Male WTE : No.	Female WTE : No	Perm Count %	Perm Count Male %	Perm Count Female %	Fulltime Count %	Part time Count %	FT Count Male %	FT Count Female %
Total	11,503	13,035	1:0.9	2,371	10,664	1:0.9	1:0.9	85.86%	13.88%	71.98%	70.53%	29.47%	85.91%	67.11%
General Support	1,032	1,150	1:0.9	527	623	1:1	1:0.8	93.91%	43.22%	50.70%	80.09%	19.91%	93.74%	68.54%
Health Care Assistants	2,290	2,810	1:0.8	510	2,300	1:0.9	1:0.8	89.82%	16.37%	73.45%	43.20%	56.80%	60.39%	39.39%
Care, other	333	381	1:0.9	59	322	1:0.9	1:0.9	91.08%	13.91%	77.17%	69.29%	30.71%	81.36%	67.08%
Patient & Client Care	2,623	3,191	1:0.8	569	2,622	1:0.9	1:0.8	89.97%	16.08%	73.90%	46.32%	53.68%	62.57%	42.79%



HSE Midwest Employment Report by Care Group: WTE, Headcount, Gender, Full-Time / Part-Time etc. FEB 2025

FEB 2025	WTE FEB 2025	No. FEB 2025	WTE : No	Number Male	Number Female	Male WTE : No.	Female WTE : No	Perm Count %	Number Male %	Number Female %	Fulltime Count %	Part time Count %	FT Count Male %	FT Count Female %
Total	11,503	13,035	1:0.9	2,371	10,664	1:0.9	1:0.9	85.86%	13.88%	71.98%	70.53%	29.47%	85.91%	67.11%
Acute Hospital Services	5,840	6,362	1:0.9	1,390	4,972	1:1	1:0.9	83.06%	15.06%	68.00%	83.02%	16.98%	95.40%	79.57%
Disabilities	2,195	2,639	1:0.8	377	2,262	1:0.9	1:0.8	86.93%	12.50%	74.42%	41.87%	58.13%	45.36%	41.29%
Mental Health	841	913	1:0.9	187	726	1:0.9	1:0.9	82.80%	17.20%	65.61%	88.72%	11.28%	91.98%	87.88%
Older People	1,307	1,573	1:0.8	220	1,353	1:0.9	1:0.8	94.15%	12.78%	81.37%	60.97%	39.03%	88.64%	56.47%
Primary Care	1,114	1,331	1:0.8	126	1,205	1:0.9	1:0.8	88.28%	7.44%	80.84%	63.11%	36.89%	82.54%	61.08%
CHO Operations	164	170	1:1	64	106	1:1	1:1	94.12%	34.12%	60.00%	95.88%	4.12%	100.00%	93.40%
Community Health & Wellbeing	43	47	1:0.9	7	40	1:0.9	1:0.9	89.36%	12.77%	76.60%	74.47%	25.53%	71.43%	75.00%



Month-on-Month Summary	% WTE change since JAN 2025	WTE change since JAN 2025	Disabilities	Acute Hospital Services	Mental Health	Primary Care	Older People	Community Health & Wellbeing	CHO Operations
Total	+0.3%	+37.8	+18.0	+21.6	+7.8	-1.4	-4.6	-0.2	-3.5
Consultants	+1.0%	+2.8	-0.1	+2.1	+0.8	+0.2	-0.3		
Registrars	-0.2%	-0.6		-0.6	-0.2	+0.1	+0.1		
SHO/ Interns	-0.1%	-0.4		-0.8	+0.1		+0.4		
Medical/ Dental, other	-1.3%	-0.7	+0.0	-0.0		-0.6	+0.0		
Medical & Dental	+0.1%	+1.2	-0.1	+0.7	+0.7	-0.4	+0.2		
Nurse/ Midwife Manager	+0.2%	+1.2	+0.5	+1.0	-0.3	-0.6	+0.5	+0.0	+0.0
Nurse/ Midwife Specialist & AN/MP	-0.3%	-0.7	-0.1	-0.3	-0.3	+1.0	-1.1		-0.0
Staff Nurse/ Staff Midwife	+0.3%	+6.4	+1.8	+2.3	+1.8	-0.1	+0.8		
Public Health Nurse	-0.6%	-0.8				-0.8	+0.0	+0.0	
Nursing/ Midwifery Student	+62.3%	+29.1	+0.0	+22.3	+6.8	+0.0			
Nursing/ Midwifery other	+7.7%	+1.5	+0.0	+0.6	+0.7	+0.2			
Nursing & Midwifery	+1.0%	+36.7	+2.2	+25.9	+8.7	-0.3	+0.2	+0.0	-0.0
Therapy Professions	-0.5%	-2.5	-0.6	+2.3	-0.2	-2.3	-1.8	+0.0	
Health Science/ Diagnostics	-0.8%	-2.4	-0.0	-2.4		+0.0	-0.1		
Social Care	-0.9%	-2.7	-2.6		-0.1				
Social Workers	+3.2%	+2.7	+2.0	+0.0	+0.9	-0.1	+0.0		+0.0
Psychologists	+0.3%	+0.5	-1.0	+0.9	+0.6	-0.0	-0.1		
Pharmacy	+0.7%	+0.6		+1.6	+0.0	-1.0	+0.0		-0.1
H&SC, Other	+0.6%	+0.3	+0.0	-0.1	+0.2	+0.1		+0.0	



Health & Social Care Professionals	-0.2%	-3.5	-2.2	+2.5	+1.5	-3.3	-1.9	+0.0	-0.0
Management (VIII & above)	-1.5%	-1.7	-0.1	-1.7	-0.0	+0.1	-0.0	+0.0	+0.0
Administrative/ Supervisory (V to VII)	-0.2%	-0.9	+0.9	+1.4	-0.9	+0.7	-1.1	-0.0	-1.9
Clerical (III & IV)	-0.5%	-5.2	+2.4	-7.0	-0.5	+1.4	-0.9	+0.0	-0.5
Management & Administrative	-0.5%	-7.7	+3.2	-7.3	-1.4	+2.2	-2.0	-0.0	-2.4
Support	-0.3%	-2.5	+0.5	-3.1	-0.1	-0.6	+0.9		
Maintenance/ Technical	+1.1%	+1.5	+1.3	-0.3	-0.0	+1.0	+0.6		-1.1
General Support	-0.1%	-1.0	+1.8	-3.4	-0.2	+0.4	+1.4		-1.1
Health Care Assistants	+0.3%	+6.6	+9.3	+2.9	-1.5	-0.6	-3.6		
Care, other	+1.7%	+5.6	+3.8	+0.4	+0.0	+0.6	+1.0	-0.1	
Patient & Client Care	+0.5%	+12.2	+13.1	+3.3	-1.5	+0.0	-2.6	-0.1	



Year-on-Year Summary	% WTE change since FEB 2024	WTE change since FEB 2024	Disabilities	Acute Hospital Services	Mental Health	Primary Care	Older People	Community Health & Wellbeing	CHO Operations
Total	+0.3%	+31.5	+112.4	+71.3	-21.2	-24.5	-79.0	+2.3	-29.8
Consultants	+7.8%	+20.3	-0.0	+20.5	+0.8	-0.6	-0.4		
Registrars	+8.7%	+28.6		+23.7	+0.2	+5.3	-0.7		
SHO/ Interns	+3.0%	+10.0		+13.3	-5.0		+1.7		
Medical/ Dental, other	-6.1%	-3.3	+0.0	-0.0		-2.3	-1.0		
Medical & Dental	+5.7%	+55.6	-0.0	+57.6	-3.9	+2.4	-0.4		
Nurse/ Midwife Manager	+4.6%	+35.3	+1.7	+34.3	-0.9	+7.3	-7.9	+1.0	-0.2
Nurse/ Midwife Specialist & AN/MP	-2.1%	-5.8	-2.0	-1.2	+0.9	-2.1	-0.7		-0.6
Staff Nurse/ Staff Midwife	+1.7%	+41.1	+20.7	+46.9	+6.0	-9.3	-23.3		
Public Health Nurse	+8.8%	+10.7				+8.9	+1.0	+0.8	
Nursing/ Midwifery Student	-16.9%	-15.4	-1.0	-4.9	+0.5	-10.0			
Nursing/ Midwifery other	-7.8%	-1.8	+0.0	-1.8	+0.0	+0.0			
Nursing & Midwifery	+1.7%	+64.0	+19.5	+73.3	+6.5	-5.2	-31.0	+1.8	-0.8
Therapy Professions	+0.4%	+2.2	+5.8	+10.7	-0.2	-9.2	-4.9	+0.0	
Health Science/ Diagnostics	+2.3%	+7.0	+1.0	+6.8		-0.8	-0.0		
Social Care	+1.4%	+3.9	+3.7		+0.2				
Social Workers	-4.1%	-3.8	+0.5	-2.3	+0.1	-0.3	+0.0		-1.8
Psychologists	+4.5%	+6.7	+1.5	-0.4	-6.0	+11.6	+0.0		
Pharmacy	+3.9%	+2.9		+3.8	+0.1	-1.0	+0.0		+0.0
H&SC, Other	+3.7%	+1.9	+0.1	+0.7	+0.3	+0.8		+0.0	



Health & Social Care Professionals	+1.4%	+20.8	+12.5	+19.4	-5.5	+1.1	-4.9	+0.0	-1.8
Management (VIII & above)	-5.7%	-6.6	+1.1	-6.4	-0.0	+0.3	+0.7	-0.2	-2.1
Administrative/ Supervisory (V to VII)	-5.4%	-25.3	+0.3	-5.3	-2.3	+0.1	-3.2	-0.0	-15.0
Clerical (III & IV)	-6.0%	-63.0	+8.1	-38.1	-3.0	-17.4	-5.8	+0.9	-7.7
Management & Administrative	-5.8%	-95.0	+9.5	-49.8	-5.3	-17.1	-8.3	+0.7	-24.7
Support	-2.1%	-19.1	-1.7	-12.0	-2.1	+0.6	-3.9		
Maintenance/ Technical	-1.5%	-2.2	-1.4	-3.7	-1.8	+5.0	+2.2		-2.5
General Support	-2.0%	-21.3	-3.2	-15.6	-3.8	+5.6	-1.7		-2.5
Health Care Assistants	+0.4%	+8.8	+69.6	-12.0	-10.2	-7.2	-31.4		
Care, other	-0.4%	-1.4	+4.5	-1.5	+1.1	-4.1	-1.3	-0.2	
Patient & Client Care	+0.3%	+7.4	+74.1	-13.5	-9.1	-11.4	-32.7	-0.2	



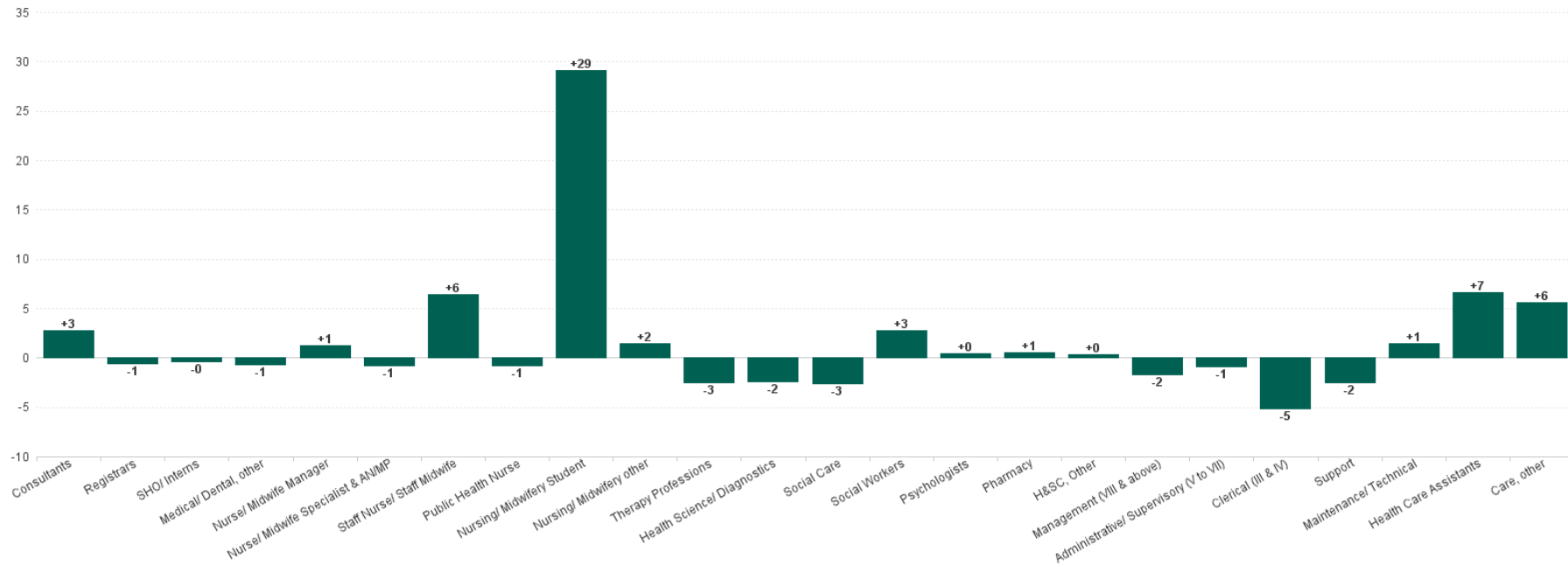
Year-to-Date Summary	% WTE change since DEC 2024	WTE change since DEC 2024	Disabilities	Acute Hospital Services	Mental Health	Primary Care	Older People	Community Health & Wellbeing	CHO Operations
Total	+0.8%	+90.2	+59.5	+33.2	+17.5	+3.5	-15.0	-0.2	-8.3
Consultants	+2.0%	+5.5	-0.0	+3.2	+2.3	+0.2	-0.3		
Registrars	+2.7%	+9.4		+8.1	-0.6	+2.0	+0.0		
SHO/ Interns	-3.3%	-11.9		-11.3	+0.1		-0.6		
Medical/ Dental, other	-2.3%	-1.2	+0.0	-0.0		-0.7	-0.5		
Medical & Dental	+0.2%	+1.7	-0.0	-0.1	+1.7	+1.5	-1.4		
Nurse/ Midwife Manager	+1.7%	+12.9	+2.5	+6.5	+1.7	+2.2	+0.1	-0.0	+0.0
Nurse/ Midwife Specialist & AN/MP	+0.7%	+2.0	-0.1	-1.1	+3.6	+0.4	-0.7		+0.0
Staff Nurse/ Staff Midwife	+0.4%	+10.7	+13.0	+5.3	-3.0	-0.8	-3.7		
Public Health Nurse	+0.6%	+0.8				+0.8	+0.0	+0.0	
Nursing/ Midwifery Student	+262.8%	+54.9	+1.0	+41.4	+12.5	+0.1			
Nursing/ Midwifery other	+7.9%	+1.5	+0.0	+0.3	+1.0	+0.2			
Nursing & Midwifery	+2.2%	+83.0	+16.4	+52.4	+15.8	+2.9	-4.4	-0.0	+0.0
Therapy Professions	+1.3%	+6.3	+1.0	+2.4	+1.5	+1.7	-0.4	+0.0	
Health Science/ Diagnostics	-0.7%	-2.2	-0.0	-2.3		+0.2	-0.1		
Social Care	+1.2%	+3.3	+3.3		-0.0				
Social Workers	+2.8%	+2.5	+0.8	-0.1	+2.2	-0.1	+0.0		-0.4
Psychologists	+0.8%	+1.2	-0.7	+0.7	+1.2	+0.1	+0.0		
Pharmacy	-0.3%	-0.2		+0.9	+0.0	-1.0	+0.0		-0.2
H&SC, Other	-0.6%	-0.3	-0.1	-0.3	+0.3	-0.2		+0.0	



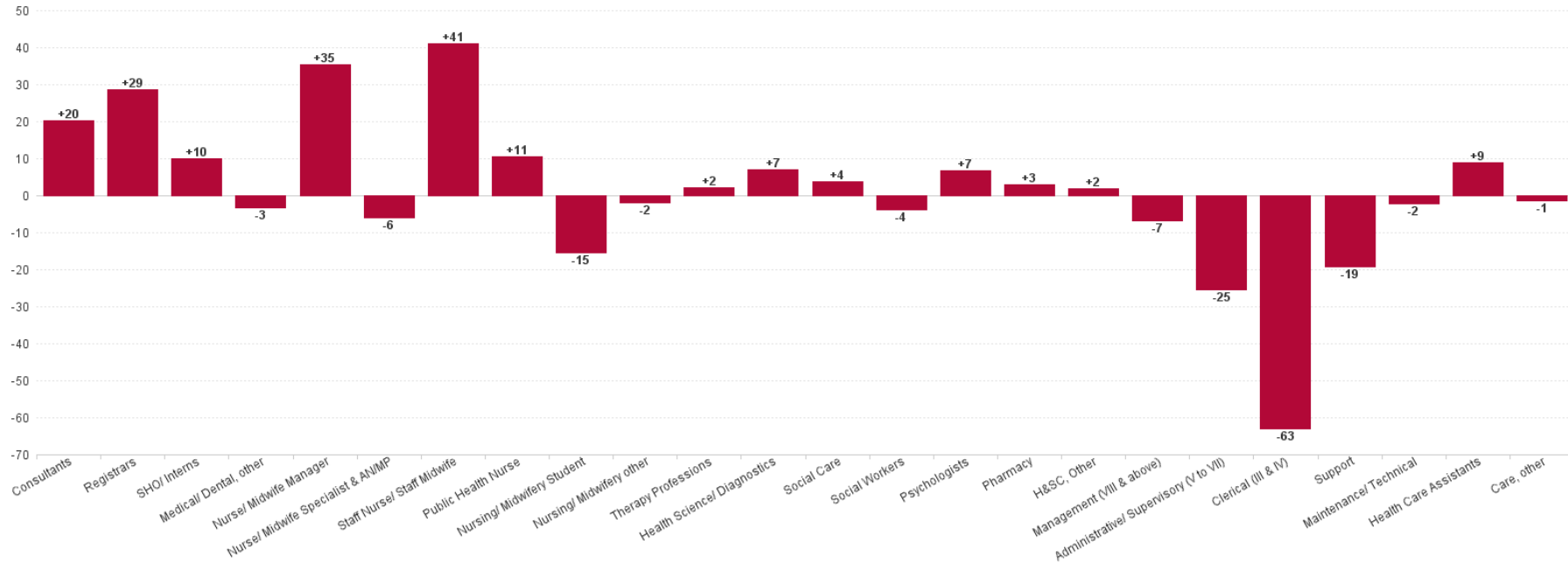
Health & Social Care Professionals	+0.7%	+10.5	+4.3	+1.3	+5.2	+0.7	-0.4	+0.0	-0.6
Management (VIII & above)	-2.8%	-3.2	+0.0	-2.1	-0.0	-1.5	+0.1	-0.0	+0.4
Administrative/ Supervisory (V to VII)	-0.8%	-3.7	+0.6	+0.0	-0.4	+2.5	-1.2	+0.0	-5.4
Clerical (III & IV)	-1.7%	-17.5	+2.5	-14.0	-1.6	-2.8	-0.3	+0.0	-1.3
Management & Administrative	-1.6%	-24.4	+3.2	-16.1	-2.0	-1.8	-1.5	-0.0	-6.3
Support	-0.3%	-2.3	+0.4	-1.9	-0.5	-0.7	+0.4		
Maintenance/ Technical	+1.3%	+1.8	+1.5	-0.5	+0.0	+1.2	+1.1		-1.5
General Support	0.0%	-0.5	+1.9	-2.4	-0.5	+0.5	+1.5		-1.5
Health Care Assistants	+0.8%	+18.8	+33.9	-2.5	-2.8	-0.2	-9.6		
Care, other	+0.3%	+1.0	-0.2	+0.6	+0.1	-0.0	+0.7	-0.2	
Patient & Client Care	+0.8%	+19.9	+33.7	-1.9	-2.7	-0.2	-8.8	-0.2	



Previous Month Summary Chart: Change since JAN 2025



Previous Year Summary Chart: Change since FEB 2024



YTD Summary Chart: Change since DEC 2024

