

## Saolta University Hospital Care Employment Report: OCT 2024

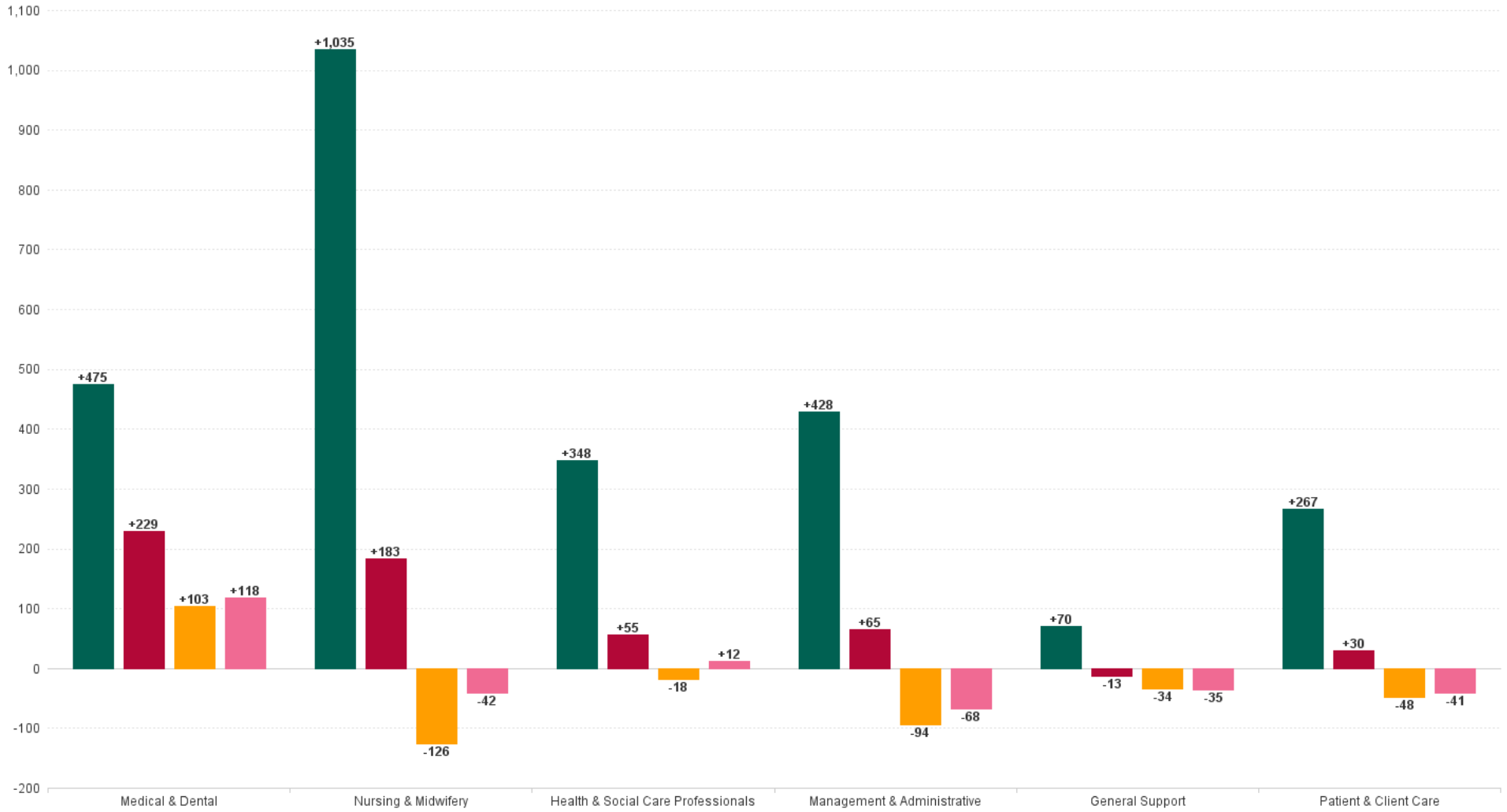
### Employment by Staff Group (1) OCT 2024

Employment by Staff Group (1) OCT 2024	WTE DEC 2019	WTE DEC 2022	WTE DEC 2023	WTE SEP 2024	WTE OCT 2024	WTE Change 2023	WTE Change 2024	WTE Change SEP 2024	WTE Change Dec 2022 to OCT 2024	WTE Change Dec 2019 to OCT 2024	% WTE Change Dec 2022 to OCT 2024	No. OCT 2024
<b>Overall</b>	<b>9,253</b>	<b>11,327</b>	<b>12,091</b>	<b>11,909</b>	<b>11,876</b>	<b>+765</b>	<b>-215</b>	<b>-33</b>	<b>+549</b>	<b>+2,623</b>	<b>4.85%</b>	<b>13,152</b>
Consultants	463	511	556	583	596	+45	+40	+13	+84	+133	16.48%	630
Registrars	445	507	533	557	568	+26	+36	+11	+62	+124	12.17%	580
SHO/ Interns	535	668	723	740	742	+55	+19	+2	+74	+207	11.05%	750
Medical/ Dental, other	10	12	12	20	21	+0	+9	+1	+9	+11	75.65%	40
<b>Medical &amp; Dental</b>	<b>1,452</b>	<b>1,698</b>	<b>1,824</b>	<b>1,900</b>	<b>1,927</b>	<b>+126</b>	<b>+103</b>	<b>+27</b>	<b>+229</b>	<b>+475</b>	<b>13.47%</b>	<b>2,000</b>
Nurse/ Midwife Manager	567	713	812	779	786	+99	-27	+6	+72	+219	10.10%	849
Nurse/ Midwife Specialist & AN/MP	218	315	367	371	373	+53	+6	+2	+58	+155	18.57%	404
Staff Nurse/ Staff Midwife	2,764	3,303	3,520	3,397	3,356	+217	-164	-40	+53	+592	1.62%	3,854
Public Health Nurse	1									-1	-100.00%	
Nursing/ Midwifery awaiting registration	36	101	41.41	59	93	-60	+52	+34	-8	+57	-7.60%	123
Post-registration Nurse/ Midwife Student	12	9	11	11	11	+2	-0	-0	+2	-1	22.93%	11
Pre-registration Nurse/ Midwife Intern	2	10	3.27	60	8	-7	+5	-52	-2	+7	-17.75%	38
Nursing/ Midwifery Student	50	120	56	131	113	-65	+57	-18	-7	+63	-6.20%	172
Nursing/ Midwifery other	33	34	39	42	40	+5	+1	-1	+7	+8	19.42%	47
<b>Nursing &amp; Midwifery</b>	<b>3,633</b>	<b>4,485</b>	<b>4,794</b>	<b>4,720</b>	<b>4,668</b>	<b>+309</b>	<b>-126</b>	<b>-51</b>	<b>+183</b>	<b>+1,035</b>	<b>4.08%</b>	<b>5,326</b>
Dietitians	37	49	56.04	57	56	+7	+0	-0	+7	+19	14.45%	64
Occupational Therapists	57	79	89.25	91	92	+10	+3	+1	+14	+36	17.13%	100
Orthoptists	6	5	4.96	5	5	-0	-0	-0	-0	-1	-7.80%	5
Physiotherapists	141	181	194.72	188	190	+14	-5	+2	+9	+49	5.06%	209
Podiatrists & Chiropodists	5	5	5.92	7	7	+1	+1	-0	+2	+2	38.27%	7
Speech & Language Therapists	16	30	29.16	27	27	-0	-2	+0	-3	+11	-8.91%	31
Therapy Professions	262	349	380	374	377	+31	-3	+3	+29	+115	8.21%	416
Health Science/ Diagnostics	617	738	743	743	750	+6	+6	+7	+12	+133	1.62%	837
Social Care	2	2	2	2	2	-0	+0	+0	-0	+0	-2.05%	3
Social Workers	26	43	54	52	53	+11	-1	+1	+10	+27	24.10%	59
Psychologists	1	3	7	7	7	+4	+0	+0	+4	+6	131.51%	8
Pharmacy	137	191	203	205	204	+11	+2	-1	+13	+68	6.89%	231
H&SC, Other	19	31	41	20	18	+10	-23	-2	-13	-1	-41.53%	26
<b>Health &amp; Social Care Professionals</b>	<b>1,065</b>	<b>1,357</b>	<b>1,430</b>	<b>1,403</b>	<b>1,412</b>	<b>+73</b>	<b>-18</b>	<b>+9</b>	<b>+55</b>	<b>+348</b>	<b>4.08%</b>	<b>1,580</b>
Management (VIII & above)	51	62	67	61	61	+6	-7	-0	-1	+10	-1.77%	62
Administrative/ Supervisory (V to VII)	237	384	444	426	434	+60	-10	+8	+50	+198	13.08%	454
Clerical (III & IV)	1,048	1,252	1,346	1,273	1,268	+93	-77	-5	+16	+221	1.27%	1,404
<b>Management &amp; Administrative</b>	<b>1,335</b>	<b>1,698</b>	<b>1,857</b>	<b>1,760</b>	<b>1,763</b>	<b>+159</b>	<b>-94</b>	<b>+3</b>	<b>+65</b>	<b>+428</b>	<b>3.83%</b>	<b>1,920</b>
Support	836	919	939	933	916	+20	-22	-16	-3	+81	-0.28%	1,007
Maintenance/ Technical	103	103	104	95	93	+1	-12	-3	-11	-10	-10.27%	96
<b>General Support</b>	<b>939</b>	<b>1,022</b>	<b>1,043</b>	<b>1,028</b>	<b>1,009</b>	<b>+20</b>	<b>-34</b>	<b>-19</b>	<b>-13</b>	<b>+70</b>	<b>-1.29%</b>	<b>1,103</b>
Health Care Assistants	799	980	1,046	1,001	999	+65	-47	-2	+19	+200	1.91%	1,115
Care, other	30	86	99	96	98	+13	-1	+1	+11	+67	13.29%	108
<b>Patient &amp; Client Care</b>	<b>830</b>	<b>1,066</b>	<b>1,144</b>	<b>1,097</b>	<b>1,096</b>	<b>+78</b>	<b>-48</b>	<b>-0</b>	<b>+30</b>	<b>+267</b>	<b>2.83%</b>	<b>1,223</b>



# WTE Change by Staff Category

■ WTE change since DEC 2019 ■ WTE change since DEC 2022 ■ WTE change since DEC 2023 ■ WTE change since OCT 2023

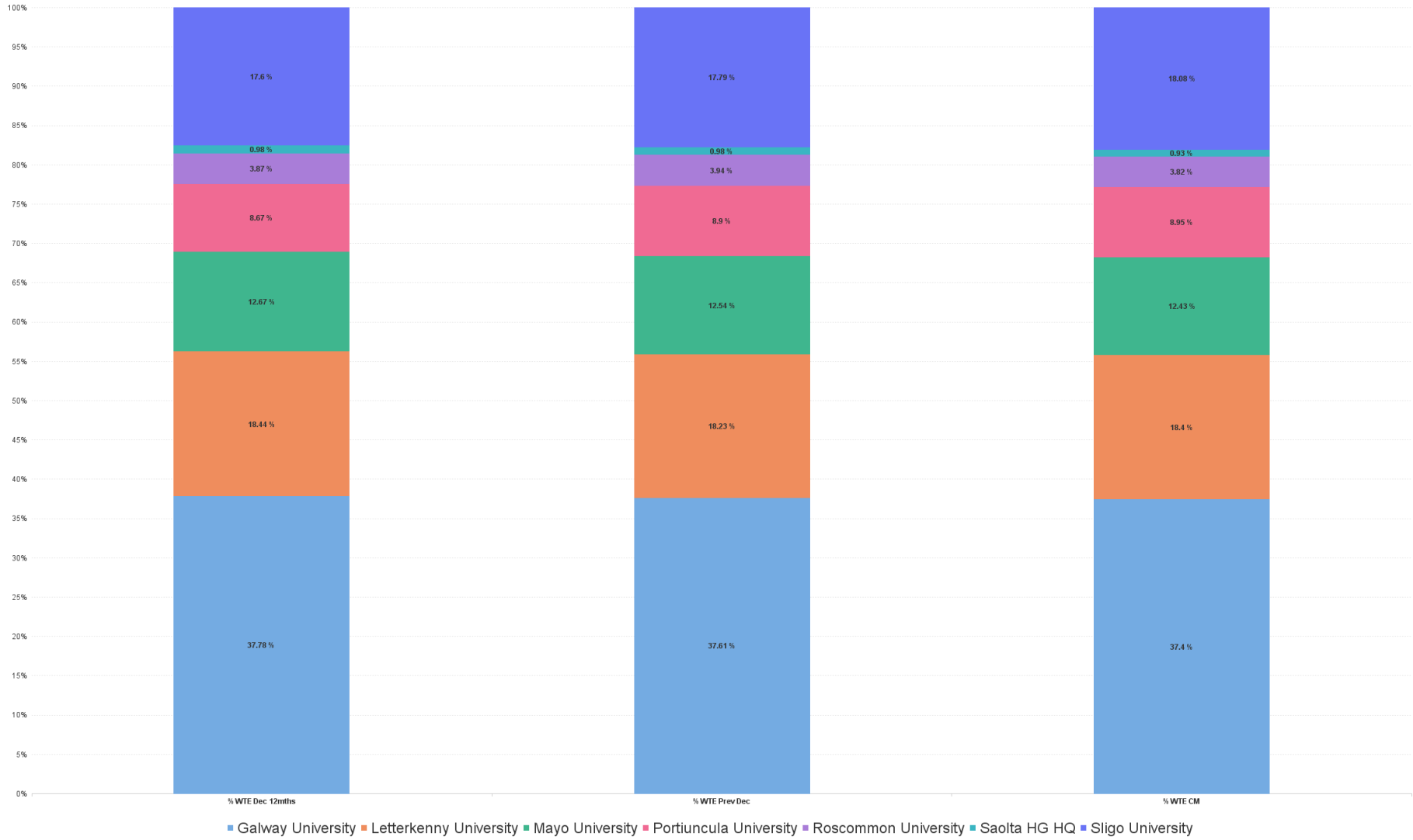


## Employment Report by Hospital: OCT 2024

Hospital OCT 2024	WTE DEC 2019	WTE DEC 2022	WTE DEC 2023	WTE SEP 2024	WTE OCT 2024	WTE Change 2023	WTE Change 2024	WTE Change SEP 2024	WTE Change Dec 2022 to OCT 2024	WTE Change Dec 2019 to OCT 2024	% WTE Change Dec 2022 to OCT 2024	No. OCT 2024
<b>Overall</b>	<b>9,253</b>	<b>11,327</b>	<b>12,091</b>	<b>11,909</b>	<b>11,876</b>	<b>+765</b>	<b>-215</b>	<b>-33</b>	<b>+549</b>	<b>+2,623</b>	<b>4.85%</b>	<b>13,152</b>
Galway University	3,607	4,280	4,548	4,449	4,441	+268	-107	-8	+161	+835	3.77%	4,890
Letterkenny University	1,607	2,089	2,204	2,198	2,185	+116	-20	-14	+96	+578	4.61%	2,426
Mayo University	1,150	1,435	1,516	1,486	1,476	+82	-41	-11	+41	+326	2.86%	1,651
Portiuncula University	790	982	1,076	1,064	1,062	+95	-14	-2	+81	+273	8.24%	1,183
Roscommon University	333	438	476	455	454	+37	-22	-0	+16	+121	3.55%	508
Saolta HG HQ	79	110	119	109	110	+8	-9	+1	-0	+31	-0.26%	114
Sligo University	1,688	1,993	2,151	2,147	2,148	+158	-4	+1	+154	+460	7.75%	2,380



% Total by Hospital



## Employment Report by HSE/S38: OCT 2024

Administration OCT 2024	WTE DEC 2019	WTE DEC 2022	WTE DEC 2023	WTE SEP 2024	WTE OCT 2024	WTE Change 2023	WTE Change 2024	WTE Change SEP 2024	WTE Change Dec 2022 to OCT 2024	WTE Change Dec 2019 to OCT 2024	% WTE Change Dec 2022 to OCT 2024	No. OCT 2024
<b>Overall</b>	<b>9,253</b>	<b>11,327</b>	<b>12,091</b>	<b>11,909</b>	<b>11,876</b>	<b>+765</b>	<b>-215</b>	<b>-33</b>	<b>+549</b>	<b>+2,623</b>	<b>4.85%</b>	<b>13,152</b>
Health Service Executive	9,253	11,327	12,091	11,909	11,876	+765	-215	-33	+549	+2,623	4.85%	13,152



# Employment Report by Administration: OCT 2024

## Health Service Executive

OCT 2024	WTE DEC 2019	WTE DEC 2022	WTE DEC 2023	WTE SEP 2024	WTE OCT 2024	WTE Change 2023	WTE Change 2024	WTE Change SEP 2024	WTE Change Dec 2022 to OCT 2024	WTE Change Dec 2019 to OCT 2024	% WTE Change Dec 2022 to OCT 2024	No. OCT 2024
<b>Total Health Service Executive</b>	<b>9,253</b>	<b>11,327</b>	<b>12,091</b>	<b>11,909</b>	<b>11,876</b>	<b>+765</b>	<b>-215</b>	<b>-33</b>	<b>+549</b>	<b>+2,623</b>	<b>4.85%</b>	<b>13,152</b>
Consultants	463	511	556	583	596	+45	+40	+12	+84	+133	16.48%	630
Registrars	445	507	533	557	568	+26	+36	+11	+62	+124	12.17%	580
SHO/ Interns	535	668	723	740	742	+55	+19	+2	+74	+207	11.05%	750
Medical/ Dental, other	10	12	12	20	21	+0	+9	+1	+9	+11	75.65%	40
<b>Medical &amp; Dental</b>	<b>1,452</b>	<b>1,698</b>	<b>1,824</b>	<b>1,900</b>	<b>1,927</b>	<b>+126</b>	<b>+103</b>	<b>+27</b>	<b>+229</b>	<b>+475</b>	<b>13.47%</b>	<b>2,000</b>
Nurse/ Midwife Manager	567	713	812	779	786	+99	-27	+6	+72	+219	10.10%	849
Nurse/ Midwife Specialist & AN/MP	218	315	367	371	373	+53	+6	+2	+58	+155	18.57%	404
Staff Nurse/ Staff Midwife	2,764	3,303	3,520	3,397	3,356	+217	-164	-40	+53	+592	1.62%	3,854
Public Health Nurse	1									-1	-100.00%	
<i>Nursing/ Midwifery awaiting registration</i>	36	101	+41	59	93	+65	+52	+8	-8	+57	-8	123
<i>Post-registration Nurse/ Midwife Student</i>	12	9	+11	11	11	-3	-0	+0	+2	-1	+2	11
<i>Pre-registration Nurse/ Midwife Intern</i>	2	10	+3	60	8	+9	+5	-5	-2	+7	-2	38
Nursing/ Midwifery Student	50	120	56	131	113	-65	+57	-18	-7	+63	-6.20%	172
Nursing/ Midwifery other	33	34	39	42	40	+5	+1	-1	+7	+8	19.42%	47
<b>Nursing &amp; Midwifery</b>	<b>3,633</b>	<b>4,485</b>	<b>4,794</b>	<b>4,720</b>	<b>4,668</b>	<b>+309</b>	<b>-126</b>	<b>-51</b>	<b>+183</b>	<b>+1,035</b>	<b>4.08%</b>	<b>5,326</b>
<i>Dietitians</i>	37	49	+56	57	56	+12	+0	+1	+7	+19	+7	64
<i>Occupational Therapists</i>	57	79	+89	91	92	+22	+3	+3	+14	+36	+14	100
<i>Orthoptists</i>	6	5	+5	5	5	-1	-0	-1	-0	-1	-0	5
<i>Physiotherapists</i>	141	181	+195	188	190	+40	-5	-5	+9	+49	+9	209
<i>Podiatrists &amp; Chiropractors</i>	5	5	+6	7	7	+0	+1	+1	+2	+2	+2	7
<i>Speech &amp; Language Therapists</i>	16	30	+29	27	27	+13	-2	-2	-3	+11	-3	31
Therapy Professions	262	349	380	374	377	+31	-3	+3	+29	+115	8.21%	416
Health Science/ Diagnostics	617	738	743	743	750	+6	+6	+7	+12	+133	1.62%	837
Social Care	2	2	2	2	2	-0	+0	+0	-0	+0	-2.05%	3
Social Workers	26	43	54	52	53	+11	-1	+1	+10	+27	24.10%	59
Psychologists	1	3	7	7	7	+4	+0	+0	+4	+6	131.51%	8
Pharmacy	137	191	203	205	204	+11	+2	-1	+13	+68	6.89%	231
H&SC, Other	19	31	41	20	18	+10	-23	-2	-13	-1	-41.53%	26
<b>Health &amp; Social Care Professionals</b>	<b>1,065</b>	<b>1,357</b>	<b>1,430</b>	<b>1,403</b>	<b>1,412</b>	<b>+73</b>	<b>-18</b>	<b>+9</b>	<b>+55</b>	<b>+348</b>	<b>4.08%</b>	<b>1,580</b>
Management (VIII & above)	51	62	67	61	61	+6	-7	-0	-1	+10	-1.77%	62
Administrative/ Supervisory (V to VII)	237	384	444	426	434	+60	-10	+8	+50	+198	13.08%	454
Clerical (III & IV)	1,048	1,252	1,346	1,273	1,268	+93	-77	-5	+16	+221	1.27%	1,404
<b>Management &amp; Administrative</b>	<b>1,335</b>	<b>1,698</b>	<b>1,857</b>	<b>1,760</b>	<b>1,763</b>	<b>+159</b>	<b>-94</b>	<b>+3</b>	<b>+65</b>	<b>+428</b>	<b>3.83%</b>	<b>1,920</b>
Support	836	919	939	933	916	+20	-22	-16	-3	+81	-0.28%	1,007
Maintenance/ Technical	103	103	104	95	93	+1	-12	-3	-11	-10	-10.27%	96
<b>General Support</b>	<b>939</b>	<b>1,022</b>	<b>1,043</b>	<b>1,028</b>	<b>1,009</b>	<b>+21</b>	<b>-34</b>	<b>-19</b>	<b>-13</b>	<b>+70</b>	<b>-1.29%</b>	<b>1,103</b>
Health Care Assistants	799	980	1,046	1,001	999	+65	-47	-2	+19	+200	1.91%	1,115
Care, other	30	86	99	96	98	+13	-1	+1	+11	+67	13.29%	108
<b>Patient &amp; Client Care</b>	<b>830</b>	<b>1,066</b>	<b>1,144</b>	<b>1,097</b>	<b>1,096</b>	<b>+78</b>	<b>-48</b>	<b>-0</b>	<b>+30</b>	<b>+267</b>	<b>2.83%</b>	<b>1,223</b>



## Employment Report by Hospital : OCT 2024

Galway University	WTE DEC 2019	WTE DEC 2022	WTE DEC 2023	WTE SEP 2024	WTE OCT 2024	WTE Change 2023	WTE Change 2024	WTE Change SEP 2024	WTE Change Dec 2022 to OCT 2024	WTE Change Dec 2019 to OCT 2024	% WTE Change Dec 2022 to OCT 2024	No. OCT 2024
<b>Total Galway University</b>	<b>3,607</b>	<b>4,280</b>	<b>4,548</b>	<b>4,449</b>	<b>4,441</b>	<b>+268</b>	<b>-107</b>	<b>-8</b>	<b>+161</b>	<b>+835</b>	<b>3.77%</b>	<b>4,890</b>
Consultants	229	254	271	281	289	+17	+18	+7	+35	+60	13.83%	312
Registrars	205	235	246	262	264	+11	+18	+3	+29	+59	12.37%	269
SHO/ Interns	222	278	290	305	305	+12	+14	-0	+26	+82	9.39%	308
Medical/ Dental, other	4	6	6	14	15	+1	+9	+1	+10	+11	176.04%	32
<b>Medical &amp; Dental</b>	<b>661</b>	<b>773</b>	<b>814</b>	<b>862</b>	<b>873</b>	<b>+41</b>	<b>+59</b>	<b>+11</b>	<b>+100</b>	<b>+212</b>	<b>12.94%</b>	<b>921</b>
Nurse/ Midwife Manager	189	236	260	247	249	+23	-10	+3	+13	+60	5.48%	271
Nurse/ Midwife Specialist & AN/MP	86	122	137	140	140	+16	+3	-0	+19	+55	15.51%	153
Staff Nurse/ Staff Midwife	1,107	1,234	1,390	1,297	1,278	+157	-112	-19	+44	+171	3.59%	1,439
Public Health Nurse	1									-1	-100.00%	
<i>Nursing/ Midwifery awaiting registration</i>	8	85	14.88	23	45	-70	+31	+22	-40	+38	-46.76%	50
<i>Post-registration Nurse/ Midwife Student</i>	12	8	9	7	7	+1	-2	+0	-1	-5	-11.84%	7
<i>Pre-registration Nurse/ Midwife Intern</i>	1	4	0.97	30	4	-3	+3	-26	-0	+3	-2.28%	13
Nursing/ Midwifery Student	21	98	25	61	57	-73	+32	-4	-41	+36	-41.92%	70
Nursing/ Midwifery other	10	11	16	13	12	+5	-4	-1	+1	+2	8.21%	14
<b>Nursing &amp; Midwifery</b>	<b>1,415</b>	<b>1,700</b>	<b>1,828</b>	<b>1,757</b>	<b>1,737</b>	<b>+128</b>	<b>-92</b>	<b>-21</b>	<b>+36</b>	<b>+322</b>	<b>2.13%</b>	<b>1,947</b>
<i>Dietitians</i>	14	19	21.52	21	21	+2	-1	-0	+1	+6	7.54%	23
<i>Occupational Therapists</i>	22	31	34.14	34	36	+3	+2	+2	+4	+13	13.97%	40
<i>Orthoptists</i>	3	2	1.06	2	2	-1	+1	-0	-0	-1	-0.50%	2
<i>Physiotherapists</i>	62	85	88.18	86	87	+3	-2	+1	+2	+24	2.07%	94
<i>Podiatrists &amp; Chiropodists</i>	1	2	2	3	3	+0	+1	+0	+1	+2	50.75%	3
<i>Speech &amp; Language Therapists</i>	7	12	13.1	12	12	+1	-1	+0	-0	+5	-1.38%	14
Therapy Professions	109	152	160	157	160	+8	-0	+3	+8	+51	5.54%	176
Health Science/ Diagnostics	295	340	347	348	355	+7	+8	+7	+14	+60	4.21%	397
Social Care	2	2	2	2	2	-0	+0	+0	-0	+0	-2.05%	3
Social Workers	19	28	35	34	34	+7	-1	+0	+6	+16	20.65%	37
Psychologists	1	2	6	6	6	+4	+0	+0	+4	+5	192.45%	7
Pharmacy	46	71	69	68	70	-2	+1	+2	-1	+23	-1.93%	79
H&SC, Other	10	17	22	9	8	+4	-14	-1	-9	-2	-53.96%	14
<b>Health &amp; Social Care Professionals</b>	<b>483</b>	<b>613</b>	<b>642</b>	<b>625</b>	<b>635</b>	<b>+28</b>	<b>-6</b>	<b>+10</b>	<b>+22</b>	<b>+153</b>	<b>3.57%</b>	<b>713</b>
Management (VIII & above)	11	12	13	12	12	+1	-1	+0	+0	+1	0.08%	12
Administrative/ Supervisory (V to VII)	96	133	153	147	149	+20	-4	+3	+16	+54	12.04%	157
Clerical (III & IV)	390	449	486	455	454	+38	-32	-1	+5	+64	1.16%	506
<b>Management &amp; Administrative</b>	<b>496</b>	<b>594</b>	<b>652</b>	<b>613</b>	<b>615</b>	<b>+58</b>	<b>-37</b>	<b>+2</b>	<b>+21</b>	<b>+119</b>	<b>3.58%</b>	<b>675</b>
Support	236	253	248	250	242	-5	-6	-8	-11	+6	-4.45%	262
Maintenance/ Technical	36	36	34	34	31	-2	-4	-3	-5	-5	-14.43%	33
<b>General Support</b>	<b>271</b>	<b>289</b>	<b>282</b>	<b>284</b>	<b>272</b>	<b>-7</b>	<b>-10</b>	<b>-11</b>	<b>-16</b>	<b>+1</b>	<b>-5.68%</b>	<b>295</b>
Health Care Assistants	265	295	309	286	287	+14	-22	+0	-8	+22	-2.66%	316
Care, other	15	16	21	22	22	+6	+1	+0	+6	+7	40.08%	23
<b>Patient &amp; Client Care</b>	<b>280</b>	<b>310</b>	<b>330</b>	<b>308</b>	<b>309</b>	<b>+20</b>	<b>-21</b>	<b>+1</b>	<b>-2</b>	<b>+29</b>	<b>-0.51%</b>	<b>339</b>



Letterkenny University	WTE DEC 2019	WTE DEC 2022	WTE DEC 2023	WTE SEP 2024	WTE OCT 2024	WTE Change 2023	WTE Change 2024	WTE Change SEP 2024	WTE Change Dec 2022 to OCT 2024	WTE Change Dec 2019 to OCT 2024	% WTE Change Dec 2022 to OCT 2024	No. OCT 2024
<b>Total Letterkenny University</b>	<b>1,607</b>	<b>2,089</b>	<b>2,204</b>	<b>2,198</b>	<b>2,185</b>	<b>+116</b>	<b>-20</b>	<b>-14</b>	<b>+96</b>	<b>+578</b>	<b>4.61%</b>	<b>2,426</b>
Consultants	58	68	73	80	81	+5	+8	+1	+13	+23	19.21%	84
Registrars	63	63	67	78	78	+3	+12	+0	+15	+15	23.67%	80
SHO/ Interns	87	106	118	115	115	+12	-3	+0	+9	+28	8.11%	117
Medical/ Dental, other		0	1	1	1	+0	+0	+0	+0	+1	93.18%	1
<b>Medical &amp; Dental</b>	<b>208</b>	<b>238</b>	<b>259</b>	<b>274</b>	<b>275</b>	<b>+20</b>	<b>+17</b>	<b>+2</b>	<b>+37</b>	<b>+68</b>	<b>15.58%</b>	<b>282</b>
Nurse/ Midwife Manager	100	132	153	140	140	+21	-13	-1	+8	+39	5.83%	152
Nurse/ Midwife Specialist & AN/MP	38	52	62	68	71	+9	+9	+3	+19	+33	35.61%	75
Staff Nurse/ Staff Midwife	448	614	625	611	607	+11	-18	-4	-7	+159	-1.18%	705
<i>Nursing/ Midwifery awaiting registration</i>	7	6		25	23	-6	+23	-2	+17	+15	263.39%	24
<i>Pre-registration Nursel/ Midwife Intern</i>		1		4	0	-1	+0	-4	-1	+0	-79.59%	1
Nursing/ Midwifery Student	7	7		29	23	-7	+23	-6	+16	+16	217.28%	25
Nursing/ Midwifery other	3	4	4	8	8	+0	+4	-1	+4	+4	91.82%	9
<b>Nursing &amp; Midwifery</b>	<b>597</b>	<b>810</b>	<b>843</b>	<b>857</b>	<b>848</b>	<b>+34</b>	<b>+5</b>	<b>-9</b>	<b>+39</b>	<b>+251</b>	<b>4.76%</b>	<b>966</b>
<i>Dietitians</i>	7	8	7.9	10	10	+0	+2	-0	+3	+3	35.76%	12
<i>Occupational Therapists</i>	10	14	17.34	18	17	+4	-0	-1	+4	+7	26.84%	18
<i>Physiotherapists</i>	19	24	24.12	24	24	-0	-0	-0	-1	+5	-2.71%	26
<i>Podiatrists &amp; Chiropodists</i>	1	1	0.92	1	1	-0	+0	+0	+0	+0	1.01%	1
<i>Speech &amp; Language Therapists</i>	2	4	2.45	3	3	-1	+0	-0	-1	+1	-30.50%	3
Therapy Professions	38	50	53	56	55	+3	+2	-1	+5	+17	9.06%	60
Health Science/ Diagnostics	91	110	111	113	111	+2	-0	-2	+2	+21	1.41%	122
Social Workers	1	3	3	3	3	+0	-0	-0	-0	+2	-2.37%	3
Pharmacy	21	33	45	45	44	+13	-2	-1	+11	+22	33.08%	48
H&SC, Other	2	3	5	0	1	+2	-4	+0	-2	-1	-68.46%	1
<b>Health &amp; Social Care Professionals</b>	<b>153</b>	<b>198</b>	<b>218</b>	<b>217</b>	<b>213</b>	<b>+19</b>	<b>-4</b>	<b>-4</b>	<b>+15</b>	<b>+61</b>	<b>7.53%</b>	<b>234</b>
Management (VIII & above)	6	7	8	8	8	+1	-0	+0	+1	+2	8.54%	8
Administrative/ Supervisory (V to VII)	25	54	67	61	62	+13	-5	+1	+8	+37	15.47%	63
Clerical (III & IV)	192	245	257	250	252	+13	-5	+2	+7	+59	2.90%	275
<b>Management &amp; Administrative</b>	<b>223</b>	<b>305</b>	<b>332</b>	<b>318</b>	<b>321</b>	<b>+27</b>	<b>-11</b>	<b>+3</b>	<b>+16</b>	<b>+98</b>	<b>5.24%</b>	<b>346</b>
Support	233	260	258	251	247	-2	-10	-4	-13	+14	-4.84%	274
Maintenance/ Technical	14	15	16	13	13	+1	-3	-0	-2	-1	-15.12%	13
<b>General Support</b>	<b>246</b>	<b>275</b>	<b>273</b>	<b>264</b>	<b>260</b>	<b>-1</b>	<b>-13</b>	<b>-4</b>	<b>-15</b>	<b>+14</b>	<b>-5.41%</b>	<b>287</b>
Health Care Assistants	178	239	256	246	245	+17	-11	-1	+6	+67	2.41%	285
Care, other	2	23	24	23	22	+0	-1	-0	-1	+20	-5.13%	26
<b>Patient &amp; Client Care</b>	<b>180</b>	<b>262</b>	<b>280</b>	<b>269</b>	<b>267</b>	<b>+17</b>	<b>-13</b>	<b>-2</b>	<b>+5</b>	<b>+87</b>	<b>1.74%</b>	<b>311</b>

Mayo University	WTE DEC 2019	WTE DEC 2022	WTE DEC 2023	WTE SEP 2024	WTE OCT 2024	WTE Change 2023	WTE Change 2024	WTE Change SEP 2024	WTE Change Dec 2022 to OCT 2024	WTE Change Dec 2019 to OCT 2024	% WTE Change Dec 2022 to OCT 2024	No. OCT 2024
<b>Total Mayo University</b>	<b>1,150</b>	<b>1,435</b>	<b>1,516</b>	<b>1,486</b>	<b>1,476</b>	<b>+82</b>	<b>-41</b>	<b>-11</b>	<b>+41</b>	<b>+326</b>	<b>2.86%</b>	<b>1,651</b>
Consultants	49	54	59	64	64	+5	+5	+0	+10	+15	18.37%	66
Registrars	56	67	66	65	67	-0	+1	+2	+1	+12	1.13%	69
SHO/ Interns	74	98	103	100	101	+5	-3	+1	+3	+26	2.71%	101
Medical/ Dental, other	0	1		0		-1		-0	-1	-0	-100.00%	
<b>Medical &amp; Dental</b>	<b>179</b>	<b>220</b>	<b>229</b>	<b>229</b>	<b>232</b>	<b>+9</b>	<b>+4</b>	<b>+3</b>	<b>+12</b>	<b>+53</b>	<b>5.63%</b>	<b>236</b>
Nurse/ Midwife Manager	74	96	110	106	107	+14	-3	+1	+12	+33	12.13%	112
Nurse/ Midwife Specialist & AN/MP	22	31	42	43	42	+10	+1	-1	+11	+20	35.28%	47
Staff Nurse/ Staff Midwife	391	458	460	460	455	+3	-5	-5	-3	+64	-0.59%	530
<i>Nursing/ Midwifery awaiting registration</i>		8	14.53		2	+7	-12	+2	-5	+2	-72.01%	4
<i>Post-registration Nursel/ Midwife Student</i>			2	2	2	+2	-0	-0	+2	+2	-100.00%	2
<i>Pre-registration Nursel/ Midwife Intern</i>	0	3	2.3	13	3	-1	+1	-10	+0	+3	17.13%	20





Mayo University	WTE DEC 2019	WTE DEC 2022	WTE DEC 2023	WTE SEP 2024	WTE OCT 2024	WTE Change 2023	WTE Change 2024	WTE Change SEP 2024	WTE Change Dec 2022 to OCT 2024	WTE Change Dec 2019 to OCT 2024	% WTE Change Dec 2022 to OCT 2024	No. OCT 2024
<b>Total Mayo University</b>	<b>1,150</b>	<b>1,435</b>	<b>1,516</b>	<b>1,486</b>	<b>1,476</b>	<b>+82</b>	<b>-41</b>	<b>-11</b>	<b>+41</b>	<b>+326</b>	<b>2.86%</b>	<b>1,651</b>
Nursing/ Midwifery Student	0	10	19	15	7	+8	-11	-8	-3	+7	-28.65%	26
Nursing/ Midwifery other	2	5	7	6	6	+2	-0	+1	+2	+5	36.42%	7
<b>Nursing &amp; Midwifery</b>	<b>489</b>	<b>600</b>	<b>637</b>	<b>630</b>	<b>618</b>	<b>+37</b>	<b>-19</b>	<b>-12</b>	<b>+19</b>	<b>+129</b>	<b>3.10%</b>	<b>722</b>
<i>Dietitians</i>	5	8	9.17	9	9	+1	-0	-0	+1	+4	13.52%	10
<i>Occupational Therapists</i>	6	9	10.5	13	13	+2	+2	-0	+4	+7	39.35%	13
<i>Physiotherapists</i>	23	26	26.75	25	26	+1	-1	+1	+0	+2	0.90%	28
<i>Podiatrists &amp; Chiropodists</i>	1									-1	-100.00%	
<i>Speech &amp; Language Therapists</i>	2	2	3.4	4	4	+1	+0	+0	+1	+2	63.64%	4
Therapy Professions	37	45	50	50	51	+5	+1	+1	+6	+14	13.96%	55
Health Science/ Diagnostics	75	101	95	94	94	-6	-1	+0	-7	+19	-6.90%	108
Social Workers	3	4	7	7	7	+3	+0	+0	+3	+4	96.94%	9
Pharmacy	18	26	28	28	27	+1	-1	-1	+1	+9	2.47%	32
H&SC, Other	2	2	2	1	1	-0	-1	+0	-1	-1	-42.57%	2
<b>Health &amp; Social Care Professionals</b>	<b>136</b>	<b>178</b>	<b>181</b>	<b>180</b>	<b>180</b>	<b>+3</b>	<b>-1</b>	<b>+1</b>	<b>+3</b>	<b>+44</b>	<b>1.44%</b>	<b>206</b>
Management (VIII & above)	2	6	5	5	4	-1	-1	-1	-2	+2	-33.11%	4
Administrative/ Supervisory (V to VII)	21	41	52	49	49	+11	-3	+0	+8	+29	19.91%	53
Clerical (III & IV)	131	170	170	156	157	+0	-13	+1	-12	+26	-7.27%	178
<b>Management &amp; Administrative</b>	<b>154</b>	<b>216</b>	<b>227</b>	<b>210</b>	<b>210</b>	<b>+10</b>	<b>-16</b>	<b>-0</b>	<b>-6</b>	<b>+57</b>	<b>-2.84%</b>	<b>235</b>
Support	38	41	47	48	46	+6	-1	-2	+5	+8	11.77%	49
Maintenance/ Technical	19	19	19	14	14	+1	-5	+1	-4	-5	-23.06%	15
<b>General Support</b>	<b>57</b>	<b>59</b>	<b>66</b>	<b>62</b>	<b>60</b>	<b>+7</b>	<b>-6</b>	<b>-2</b>	<b>+1</b>	<b>+3</b>	<b>0.89%</b>	<b>64</b>
Health Care Assistants	134	151	164	161	159	+13	-4	-1	+8	+25	5.61%	172
Care, other	1	11	14	15	16	+3	+2	+0	+5	+15	43.46%	16
<b>Patient &amp; Client Care</b>	<b>135</b>	<b>162</b>	<b>177</b>	<b>176</b>	<b>175</b>	<b>+15</b>	<b>-2</b>	<b>-1</b>	<b>+13</b>	<b>+40</b>	<b>8.17%</b>	<b>188</b>

Portiuncula University	WTE DEC 2019	WTE DEC 2022	WTE DEC 2023	WTE SEP 2024	WTE OCT 2024	WTE Change 2023	WTE Change 2024	WTE Change SEP 2024	WTE Change Dec 2022 to OCT 2024	WTE Change Dec 2019 to OCT 2024	% WTE Change Dec 2022 to OCT 2024	No. OCT 2024
<b>Total Portiuncula University</b>	<b>790</b>	<b>982</b>	<b>1,076</b>	<b>1,064</b>	<b>1,062</b>	<b>+95</b>	<b>-14</b>	<b>-2</b>	<b>+81</b>	<b>+273</b>	<b>8.24%</b>	<b>1,183</b>
Consultants	38	37	47	47	46	+10	-1	-1	+9	+8	24.42%	50
Registrars	42	53	56	54	55	+3	-1	+1	+3	+13	5.14%	56
SHO/ Interns	58	70	76	80	80	+6	+4	-1	+9	+22	13.30%	81
<b>Medical &amp; Dental</b>	<b>137</b>	<b>160</b>	<b>179</b>	<b>181</b>	<b>181</b>	<b>+19</b>	<b>+3</b>	<b>+0</b>	<b>+21</b>	<b>+44</b>	<b>13.20%</b>	<b>187</b>
Nurse/ Midwife Manager	66	80	93	92	95	+12	+2	+3	+14	+29	17.65%	104
Nurse/ Midwife Specialist & ANMP	19	31	35	33	32	+4	-3	-1	+1	+13	3.67%	36
Staff Nurse/ Staff Midwife	236	288	311	307	306	+23	-5	-1	+18	+70	6.24%	353
<i>Nursing/ Midwifery awaiting registration</i>		2	2	3	5	+0	+3	+2	+3	+5	160.50%	12
<i>Post-registration Nurse/ Midwife Student</i>		1		2	2	-1	+2	+0	+1	+2	100.00%	2
Nursing/ Midwifery Student		3	2	5	7	-1	+5	+2	+4	+7	140.33%	14
Nursing/ Midwifery other	1	2	2	2	2	-1	-0	+0	-1	+1	-24.79%	3
<b>Nursing &amp; Midwifery</b>	<b>322</b>	<b>404</b>	<b>443</b>	<b>439</b>	<b>441</b>	<b>+38</b>	<b>-1</b>	<b>+3</b>	<b>+37</b>	<b>+119</b>	<b>9.12%</b>	<b>510</b>
<i>Dietitians</i>	4	4	4.75	5	5	+1	+0	+0	+1	+1	24.12%	5
<i>Occupational Therapists</i>	2	3	3.98	5	5	+1	+1	+0	+2	+3	67.22%	5
<i>Physiotherapists</i>	8	11	13.62	13	13	+2	-1	+0	+2	+5	15.51%	15
<i>Speech &amp; Language Therapists</i>	1	5	4.82	4	4	+0	-1	+0	-1	+3	-16.21%	5
Therapy Professions	16	23	27	26	27	+4	-0	+1	+4	+11	17.17%	30
Health Science/ Diagnostics	48	57	63	61	60	+6	-3	-1	+3	+12	5.64%	67
Social Workers	4	5	5	5	5	-1	+0	-0	-1	+1	-11.25%	5
Pharmacy	12	16	14	16	17	-1	+3	+1	+1	+6	8.52%	19
H&SC, Other	2	3	4	1	1	+1	-3	+0	-2	-1	-66.90%	1



Portiuncula University	WTE DEC 2019	WTE DEC 2022	WTE DEC 2023	WTE SEP 2024	WTE OCT 2024	WTE Change 2023	WTE Change 2024	WTE Change SEP 2024	WTE Change Dec 2022 to OCT 2024	WTE Change Dec 2019 to OCT 2024	% WTE Change Dec 2022 to OCT 2024	No. OCT 2024
<b>Total Portiuncula University</b>	<b>790</b>	<b>982</b>	<b>1,076</b>	<b>1,064</b>	<b>1,062</b>	<b>+95</b>	<b>-14</b>	<b>-2</b>	<b>+81</b>	<b>+273</b>	<b>8.24%</b>	<b>1,183</b>
Health & Social Care Professionals	81	104	113	109	110	+9	-3	+1	+6	+29	5.79%	122
Management (VIII & above)	6	6	6	6	6	+0	+0	+0	+0	+0	0.00%	6
Administrative/ Supervisory (V to VII)	21	34	43	46	47	+9	+4	+0	+13	+25	37.52%	48
Clerical (III & IV)	84	104	104	98	96	+1	-8	-3	-8	+11	-7.61%	105
<b>Management &amp; Administrative</b>	<b>111</b>	<b>144</b>	<b>153</b>	<b>151</b>	<b>148</b>	<b>+10</b>	<b>-5</b>	<b>-2</b>	<b>+5</b>	<b>+37</b>	<b>3.40%</b>	<b>159</b>
Support	66	77	82	79	78	+6	-4	-1	+1	+12	1.84%	87
Maintenance/ Technical	11	11	12	12	12	+1	+0	+0	+1	+1	9.09%	12
<b>General Support</b>	<b>77</b>	<b>88</b>	<b>94</b>	<b>91</b>	<b>90</b>	<b>+7</b>	<b>-4</b>	<b>-1</b>	<b>+2</b>	<b>+13</b>	<b>2.75%</b>	<b>99</b>
Health Care Assistants	59	82	94	93	91	+12	-3	-2	+9	+32	10.62%	105
Care, other	2		1	1	1	+1	+0	+0	+1	-1	-100.00%	1
<b>Patient &amp; Client Care</b>	<b>61</b>	<b>82</b>	<b>95</b>	<b>94</b>	<b>92</b>	<b>+12</b>	<b>-3</b>	<b>-2</b>	<b>+10</b>	<b>+31</b>	<b>11.62%</b>	<b>106</b>

Roscommon University	WTE DEC 2019	WTE DEC 2022	WTE DEC 2023	WTE SEP 2024	WTE OCT 2024	WTE Change 2023	WTE Change 2024	WTE Change SEP 2024	WTE Change Dec 2022 to OCT 2024	WTE Change Dec 2019 to OCT 2024	% WTE Change Dec 2022 to OCT 2024	No. OCT 2024
<b>Total Roscommon University</b>	<b>333</b>	<b>438</b>	<b>476</b>	<b>455</b>	<b>454</b>	<b>+37</b>	<b>-22</b>	<b>-0</b>	<b>+16</b>	<b>+121</b>	<b>3.55%</b>	<b>508</b>
Consultants	10	10	11	10	10	+1	-1	+0	+0	+0	1.68%	11
Registrars	7	10	10	10	11	+0	+1	+1	+1	+4	15.31%	12
SHO/ Interns	12	12	15	12	12	+3	-3	-0	+0	+0	1.26%	13
<b>Medical &amp; Dental</b>	<b>29</b>	<b>32</b>	<b>36</b>	<b>32</b>	<b>33</b>	<b>+5</b>	<b>-3</b>	<b>+1</b>	<b>+2</b>	<b>+4</b>	<b>5.66%</b>	<b>36</b>
Nurse/ Midwife Manager	23	32	38	34	34	+6	-4	+0	+2	+11	4.82%	37
Nurse/ Midwife Specialist & AN/MP	14	24	27	25	25	+4	-2	+0	+1	+12	5.60%	27
Staff Nurse/ Staff Midwife	88	132	134	131	130	+3	-4	-1	-2	+42	-1.20%	150
<i>Pre-registration Nurse/ Midwife Intern</i>		1		2	0	-1	+0	-1	-0	+0	-84.91%	1
Nursing/ Midwifery Student		1		2	0	-1	+0	-1	-0	+0	-84.91%	1
Nursing/ Midwifery other	1	1	1	1	1	-0	+0	+0	-0	+0	-1.12%	1
<b>Nursing &amp; Midwifery</b>	<b>126</b>	<b>189</b>	<b>200</b>	<b>192</b>	<b>190</b>	<b>+11</b>	<b>-10</b>	<b>-2</b>	<b>+1</b>	<b>+64</b>	<b>0.44%</b>	<b>216</b>
<i>Dietitians</i>	1	2	1.8	1	1	-0	-1	+0	-1	+0	-44.75%	1
<i>Occupational Therapists</i>	2	3	3.35	3	3	+0	-0	+0	+0	+1	16.43%	4
<i>Physiotherapists</i>	3	5	4.63	4	4	+0	-1	+0	-1	+1	-12.67%	5
<i>Podiatrists &amp; Chiropodists</i>	1		1	1	1	+1	+0	+0	+1	+0	-100.00%	1
<i>Speech &amp; Language Therapists</i>	2	2	1	1	1	-1	+0	+0	-1	-1	-46.24%	1
Therapy Professions	9	11	12	10	10	+1	-2	+0	-1	+1	-6.98%	12
Health Science/ Diagnostics	16	20	19	19	18	-2	-0	-0	-2	+2	-8.84%	22
Social Workers		1	2	2	2	+2	-0	+0	+2	+2	303.70%	3
Pharmacy	1	3	4	3	3	+1	-1	+0	-0	+2	-2.13%	4
<b>Health &amp; Social Care Professionals</b>	<b>26</b>	<b>35</b>	<b>36</b>	<b>34</b>	<b>34</b>	<b>+1</b>	<b>-2</b>	<b>-0</b>	<b>-1</b>	<b>+8</b>	<b>-2.82%</b>	<b>41</b>
Management (VIII & above)	1	1	3	1	1	+2	-2	+0	+0	+0	0.00%	1
Administrative/ Supervisory (V to VII)	11	16	18	18	20	+2	+2	+2	+4	+10	27.32%	21
Clerical (III & IV)	48	54	60	59	59	+6	-2	-0	+4	+11	7.77%	64
<b>Management &amp; Administrative</b>	<b>59</b>	<b>71</b>	<b>82</b>	<b>78</b>	<b>80</b>	<b>+11</b>	<b>-2</b>	<b>+1</b>	<b>+9</b>	<b>+20</b>	<b>12.01%</b>	<b>86</b>
Support	62	67	68	66	66	+1	-2	-0	-1	+3	-1.85%	73
Maintenance/ Technical	9	9	10	10	10	+1	-0	-0	+1	+1	17.16%	10
<b>General Support</b>	<b>71</b>	<b>75</b>	<b>78</b>	<b>76</b>	<b>76</b>	<b>+2</b>	<b>-2</b>	<b>-0</b>	<b>+0</b>	<b>+4</b>	<b>0.29%</b>	<b>83</b>
Health Care Assistants	22	36	42	40	40	+7	-3	-0	+4	+18	11.70%	44
Care, other	1	1	2	2	2	+1	+0	+0	+1	+1	194.12%	2
<b>Patient &amp; Client Care</b>	<b>22</b>	<b>36</b>	<b>44</b>	<b>42</b>	<b>41</b>	<b>+8</b>	<b>-3</b>	<b>-0</b>	<b>+5</b>	<b>+19</b>	<b>14.26%</b>	<b>46</b>



Saolta HG HQ	WTE DEC 2019	WTE DEC 2022	WTE DEC 2023	WTE SEP 2024	WTE OCT 2024	WTE Change 2023	WTE Change 2024	WTE Change SEP 2024	WTE Change Dec 2022 to OCT 2024	WTE Change Dec 2019 to OCT 2024	% WTE Change Dec 2022 to OCT 2024	No. OCT 2024
<b>Total Saolta HG HQ</b>	<b>79</b>	<b>110</b>	<b>119</b>	<b>109</b>	<b>110</b>	<b>+8</b>	<b>-9</b>	<b>+1</b>	<b>-0</b>	<b>+31</b>	<b>-0.26%</b>	<b>114</b>
Consultants	1	1	1	1	1	+0	+0	+0	+0	+0	0.00%	1
Medical & Dental	1	1	1	1	1	+0	+0	+0	+0	+0	0.00%	1
Nurse/ Midwife Manager	8	13	19	19	19	+6	+0	+0	+6	+12	44.69%	20
Staff Nurse/ Staff Midwife	1	1	1	2	2	+0	+1	+0	+1	+1	100.00%	2
Nursing/ Midwifery other	8									-8	-100.00%	
<b>Nursing &amp; Midwifery</b>	<b>16</b>	<b>14</b>	<b>20</b>	<b>21</b>	<b>21</b>	<b>+6</b>	<b>+1</b>	<b>+0</b>	<b>+7</b>	<b>+5</b>	<b>48.54%</b>	<b>22</b>
<i>Occupational Therapists</i>	<i>1</i>	<i>1</i>				<i>-1</i>			<i>-1</i>	<i>-1</i>	<i>-100.00%</i>	
Therapy Professions	1	1				-1			-1	-1	-100.00%	
Health Science/ Diagnostics		1	1	1	1	+0	+0	+0	+0	+1	0.00%	1
<b>Health &amp; Social Care Professionals</b>	<b>1</b>	<b>2</b>	<b>1</b>	<b>1</b>	<b>1</b>	<b>-1</b>	<b>+0</b>	<b>+0</b>	<b>-1</b>	<b>+0</b>	<b>-50.00%</b>	<b>1</b>
Management (VIII & above)	17	21	25	22	22	+4	-3	+0	+1	+5	6.11%	23
Administrative/ Supervisory (V to VII)	36	57	57	51	52	+0	-5	+1	-5	+16	-8.52%	54
Clerical (III & IV)	7	15	15	14	12	-0	-2	-1	-3	+5	-17.62%	13
<b>Management &amp; Administrative</b>	<b>61</b>	<b>93</b>	<b>97</b>	<b>87</b>	<b>87</b>	<b>+4</b>	<b>-10</b>	<b>+0</b>	<b>-6</b>	<b>+26</b>	<b>-6.74%</b>	<b>90</b>

Sligo University	WTE DEC 2019	WTE DEC 2022	WTE DEC 2023	WTE SEP 2024	WTE OCT 2024	WTE Change 2023	WTE Change 2024	WTE Change SEP 2024	WTE Change Dec 2022 to OCT 2024	WTE Change Dec 2019 to OCT 2024	% WTE Change Dec 2022 to OCT 2024	No. OCT 2024
<b>Total Sligo University</b>	<b>1,688</b>	<b>1,993</b>	<b>2,151</b>	<b>2,147</b>	<b>2,148</b>	<b>+158</b>	<b>-4</b>	<b>+1</b>	<b>+154</b>	<b>+460</b>	<b>7.75%</b>	<b>2,380</b>
Consultants	77	87	94	100	104	+7	+10	+4	+17	+26	19.44%	106
Registrars	72	79	88	89	92	+8	+4	+3	+13	+20	15.97%	94
SHO/ Interns	82	103	120	128	130	+17	+10	+2	+27	+48	26.07%	130
Medical/ Dental, other	6	5	6	5	5	+1	-1	+0	-0	-1	-2.02%	7
<b>Medical &amp; Dental</b>	<b>237</b>	<b>274</b>	<b>307</b>	<b>321</b>	<b>330</b>	<b>+33</b>	<b>+24</b>	<b>+9</b>	<b>+56</b>	<b>+93</b>	<b>20.54%</b>	<b>337</b>
Nurse/ Midwife Manager	106	124	140	142	142	+17	+2	-0	+18	+36	14.66%	153
Nurse/ Midwife Specialist & AN/MP	40	55	64	61	62	+9	-2	+1	+8	+22	13.69%	66
Staff Nurse/ Staff Midwife	494	577	599	588	579	+22	-20	-10	+2	+85	0.30%	675
<i>Nursing/ Midwifery awaiting registration</i>	<i>21</i>		<i>10</i>	<i>8</i>	<i>18</i>	<i>+10</i>	<i>+8</i>	<i>+10</i>	<i>+18</i>	<i>-3</i>	<i>-100.00%</i>	<i>33</i>
<i>Pre-registration Nurse/ Midwife Intern</i>		<i>2</i>		<i>12</i>	<i>1</i>	<i>-2</i>	<i>+1</i>	<i>-11</i>	<i>-1</i>	<i>+1</i>	<i>-63.46%</i>	<i>3</i>
Nursing/ Midwifery Student	21	2	10	20	18	+8	+8	-1	+17	-3	1,079.49%	36
Nursing/ Midwifery other	8	11	10	12	12	-1	+2	-0	+1	+4	8.86%	13
<b>Nursing &amp; Midwifery</b>	<b>669</b>	<b>768</b>	<b>823</b>	<b>823</b>	<b>813</b>	<b>+55</b>	<b>-10</b>	<b>-10</b>	<b>+45</b>	<b>+145</b>	<b>5.88%</b>	<b>943</b>
<i>Dietitians</i>	<i>7</i>	<i>9</i>	<i>10.9</i>	<i>11</i>	<i>11</i>	<i>+2</i>	<i>-0</i>	<i>-0</i>	<i>+2</i>	<i>+4</i>	<i>19.75%</i>	<i>13</i>
<i>Occupational Therapists</i>	<i>14</i>	<i>18</i>	<i>19.94</i>	<i>19</i>	<i>19</i>	<i>+2</i>	<i>-1</i>	<i>-0</i>	<i>+0</i>	<i>+5</i>	<i>2.59%</i>	<i>20</i>
<i>Orthoptists</i>	<i>3</i>	<i>3</i>	<i>3.9</i>	<i>3</i>	<i>3</i>	<i>+1</i>	<i>-1</i>	<i>-0</i>	<i>-0</i>	<i>-1</i>	<i>-12.42%</i>	<i>3</i>
<i>Physiotherapists</i>	<i>25</i>	<i>30</i>	<i>37.42</i>	<i>37</i>	<i>37</i>	<i>+7</i>	<i>-0</i>	<i>+0</i>	<i>+7</i>	<i>+12</i>	<i>21.83%</i>	<i>41</i>
<i>Podiatrists &amp; Chiropodists</i>	<i>1</i>	<i>2</i>	<i>2</i>	<i>2</i>	<i>2</i>	<i>+0</i>	<i>-0</i>	<i>-0</i>	<i>-0</i>	<i>+1</i>	<i>-8.51%</i>	<i>2</i>
<i>Speech &amp; Language Therapists</i>	<i>2</i>	<i>5</i>	<i>4.39</i>	<i>4</i>	<i>4</i>	<i>-0</i>	<i>-1</i>	<i>-0</i>	<i>-1</i>	<i>+2</i>	<i>-23.43%</i>	<i>4</i>
Therapy Professions	52	67	79	75	74	+12	-4	-1	+7	+23	10.78%	83
Health Science/ Diagnostics	93	109	108	108	110	-1	+3	+2	+2	+18	1.52%	120
Social Workers		2	2	1	2	-0	+0	+1	+0	+2	1.01%	2
Psychologists		1	1	1	1	+0	+0	+0	+0	+1	1.01%	1
Pharmacy	38	42	42	45	44	+0	+2	-1	+2	+6	4.26%	49
H&SC, Other	3	6	8	8	7	+2	-1	-1	+1	+4	21.10%	8
<b>Health &amp; Social Care Professionals</b>	<b>186</b>	<b>227</b>	<b>239</b>	<b>238</b>	<b>239</b>	<b>+13</b>	<b>-1</b>	<b>+1</b>	<b>+12</b>	<b>+53</b>	<b>5.26%</b>	<b>263</b>
Management (VIII & above)	8	9	8	8	8	-1	+0	+0	-1	+0	-10.94%	8
Administrative/ Supervisory (V to VII)	27	49	53	54	55	+4	+2	+1	+6	+28	11.19%	58



Sligo University	WTE DEC 2019	WTE DEC 2022	WTE DEC 2023	WTE SEP 2024	WTE OCT 2024	WTE Change 2023	WTE Change 2024	WTE Change SEP 2024	WTE Change Dec 2022 to OCT 2024	WTE Change Dec 2019 to OCT 2024	% WTE Change Dec 2022 to OCT 2024	No. OCT 2024
<b>Total Sligo University</b>	<b>1,688</b>	<b>1,993</b>	<b>2,151</b>	<b>2,147</b>	<b>2,148</b>	<b>+158</b>	<b>-4</b>	<b>+1</b>	<b>+154</b>	<b>+460</b>	<b>7.75%</b>	<b>2,380</b>
Clerical (III & IV)	195	217	253	242	239	+37	-14	-3	+22	+44	10.26%	263
Management & Administrative	230	275	314	304	302	+39	-13	-2	+27	+71	9.74%	329
Support	201	222	236	239	238	+14	+2	-1	+16	+37	7.35%	262
Maintenance/ Technical	15	14	13	13	13	-1	-0	-0	-1	-2	-9.37%	13
General Support	215	236	249	252	251	+13	+2	-1	+15	+36	6.34%	275
Health Care Assistants	141	178	181	175	177	+3	-4	+2	-1	+36	-0.33%	193
Care, other	10	36	38	34	35	+2	-3	+1	-0	+25	-0.53%	40
Patient & Client Care	151	213	219	209	212	+6	-6	+4	-1	+62	-0.36%	233



# Employment Report by Grade Group: OCT 2024

Employment by Grade Group OCT 2024	WTE DEC 2019	WTE DEC 2022	WTE DEC 2023	WTE SEP 2024	WTE OCT 2024	WTE Change 2023	WTE Change 2024	WTE Change SEP 2024	WTE Change Dec 2022 to OCT 2024	WTE Change Dec 2019 to OCT 2024	% WTE Change Dec 2022 to OCT 2024	No. OCT 2024
<b>Overall</b>	<b>9,253</b>	<b>11,327</b>	<b>12,091</b>	<b>11,909</b>	<b>11,876</b>	<b>+765</b>	<b>-215</b>	<b>-33</b>	<b>+549</b>	<b>+2,623</b>	<b>4.85%</b>	<b>13,152</b>
Consultant Anaesthesia	67	68	77	80	80	+9	+3	+1	+12	+14	17.73%	82
Consultant Dentistry	4	4	4	4	4	+0	-0	-0	+0	+0	3.78%	6
Consultant Emergency Medicine	20	23	25	27	28	+3	+2	+1	+5	+7	21.85%	29
Consultant Intensive Care Medicine	1	1	1	1	1	+0	+0	+0	+0	+0	0.00%	1
Consultant Medicine	129	157	166	180	185	+9	+19	+5	+28	+56	18.18%	198
Consultant Obstetrics & Gynaecology	27	28	31	32	33	+3	+2	+1	+5	+6	17.25%	35
Consultant Paediatrics	29	36	37	38	39	+1	+2	+0	+3	+10	8.31%	43
Consultant Pathology	49	50	55	60	61	+4	+6	+1	+10	+12	20.68%	64
Consultant Psychiatry	1	1	2	2	2	+1	+0	+0	+1	+1	100.00%	2
Consultant Radiology	44	45	54	52	53	+9	-0	+1	+9	+10	19.91%	54
Consultant Surgery	92	99	104	107	110	+5	+6	+2	+11	+17	10.65%	116
<b>Consultants</b>	<b>463</b>	<b>511</b>	<b>556</b>	<b>583</b>	<b>596</b>	<b>+45</b>	<b>+40</b>	<b>+13</b>	<b>+84</b>	<b>+133</b>	<b>16.48%</b>	<b>630</b>
Registrar	294	328	349	362	372	+21	+23	+10	+44	+79	13.46%	381
Senior Registrar	14	20	23	24	25	+3	+2	+1	+5	+11	27.30%	26
Specialist Registrar	137	159	161	170	171	+2	+10	+0	+12	+34	7.63%	173
<b>Registrars</b>	<b>445</b>	<b>507</b>	<b>533</b>	<b>557</b>	<b>568</b>	<b>+26</b>	<b>+36</b>	<b>+11</b>	<b>+62</b>	<b>+124</b>	<b>12.17%</b>	<b>580</b>
Interns	130	132	151	158	158	+19	+7	+0	+27	+28	20.31%	159
Senior House Officer	405	537	572	582	584	+35	+12	+2	+47	+179	8.77%	591
<b>SHO/ Interns</b>	<b>535</b>	<b>668</b>	<b>723</b>	<b>740</b>	<b>742</b>	<b>+55</b>	<b>+19</b>	<b>+2</b>	<b>+74</b>	<b>+207</b>	<b>11.05%</b>	<b>750</b>
Dentists	8	7	7	5	6	+0	-1	+1	-1	-1	-10.47%	7
Other Medical	3	5	5	14	15	+0	+9	+0	+10	+12	197.17%	33
<b>Medical/ Dental, other</b>	<b>10</b>	<b>12</b>	<b>12</b>	<b>20</b>	<b>21</b>	<b>+0</b>	<b>+9</b>	<b>+1</b>	<b>+9</b>	<b>+11</b>	<b>75.65%</b>	<b>40</b>
<b>Medical &amp; Dental</b>	<b>1,452</b>	<b>1,698</b>		<b>1,900</b>	<b>1,927</b>	<b>+126</b>	<b>+103</b>	<b>+27</b>	<b>+229</b>	<b>+475</b>	<b>13.47%</b>	<b>2,000</b>
Clinical Nurse/ Midwife Manager 1	103	124	133	133	133	+9	-1	-0	+9	+30	6.93%	144
Clinical Nurse/ Midwife Manager 2	333	439	503	479	485	+65	-19	+5	+46	+152	10.43%	528
Clinical Nurse/ Midwife Manager 3	60	63	71	67	67	+8	-5	-1	+4	+7	5.63%	70
Director Nursing/Midwifery, Assistant	55	68	83	79	81	+15	-3	+2	+12	+25	17.77%	86
Director of Nursing/Midwifery	16	19	21	21	21	+2	+0	+0	+2	+5	10.65%	21
<b>Nurse/ Midwife Manager</b>	<b>567</b>	<b>713</b>	<b>812</b>	<b>779</b>	<b>786</b>	<b>+99</b>	<b>-27</b>	<b>+6</b>	<b>+72</b>	<b>+219</b>	<b>10.10%</b>	<b>849</b>
Advanced Nurse/ Midwife Practitioner	57	86	95	108	119	+9	+24	+11	+33	+61	38.26%	125
Adv. Nurse/ Midwife, Candidate	17	42	67	61	50	+24	-17	-11	+7	+33	16.84%	53
Clinical Nurse/ Midwife Spec., Candidate			1	4	4	+1	+3	+0	+4	+4	-100.00%	4
Clinical Nurse/ Midwife Specialist	144	186	204	199	201	+18	-3	+2	+15	+57	8.02%	222
<b>Nurse/ Midwife Specialist &amp; AN/MP</b>	<b>218</b>	<b>315</b>	<b>367</b>	<b>371</b>	<b>373</b>	<b>+53</b>	<b>+6</b>	<b>+2</b>	<b>+58</b>	<b>+155</b>	<b>18.57%</b>	<b>404</b>
Staff Midwives	236	289	300	290	281	+11	-19	-10	-9	+45	-2.97%	340
Staff Nurse [Intellectual Disability]			2	2	2	+2	+0	+0	+2	+2	-100.00%	2
Staff Nurses [General/ Children's]	2,528	3,014	3,218	3,104	3,074	+204	-144	-31	+60	+545	1.99%	3,512
<b>Staff Nurse/ Staff Midwife</b>	<b>2,764</b>	<b>3,303</b>	<b>3,520</b>	<b>3,397</b>	<b>3,356</b>	<b>+217</b>	<b>-164</b>	<b>-40</b>	<b>+53</b>	<b>+592</b>	<b>1.62%</b>	<b>3,854</b>
Public Health Nurse	1									-1	-100.00%	
<b>Public Health Nurse</b>	<b>1</b>									<b>-1</b>	<b>-100.00%</b>	
Nursing/ Midwifery awaiting registration	36	101	41	59	93	-60	+52	+34	-8	+57	-7.60%	123
Post-registration Nurse/ Midwife Student	12	9	11	11	11	+2	-0	-0	+2	-1	22.93%	11
Pre-registration Nurse/ Midwife Intern	2	10	3	60	8	-7	+5	-52	-2	+7	-17.75%	38
<b>Nursing/ Midwifery Student</b>	<b>50</b>	<b>120</b>	<b>56</b>	<b>131</b>	<b>113</b>	<b>-65</b>	<b>+57</b>	<b>-18</b>	<b>-7</b>	<b>+63</b>	<b>-6.20%</b>	<b>172</b>
Nursing Education/Clinical	33	34	39	42	40	+5	+1	-1	+7	+8	19.42%	47
<b>Nursing/ Midwifery other</b>	<b>33</b>	<b>34</b>	<b>39</b>	<b>42</b>	<b>40</b>	<b>+5</b>	<b>+1</b>	<b>-1</b>	<b>+7</b>	<b>+8</b>	<b>19.42%</b>	<b>47</b>
<b>Nursing &amp; Midwifery</b>	<b>3,633</b>	<b>4,485</b>		<b>4,720</b>	<b>4,668</b>	<b>+309</b>	<b>-126</b>	<b>-51</b>	<b>+183</b>	<b>+1,035</b>	<b>4.08%</b>	<b>5,326</b>
Dietitians	37	49	56	57	56	+7	+0	-0	+7	+19	14.45%	64
Occupational Therapists	57	79	89	91	92	+10	+3	+1	+14	+36	17.13%	100
Orthoptists	6	5	5	5	5	-0	-0	-0	-0	-1	-7.80%	5
Physiotherapists	141	181	195	188	190	+14	-5	+2	+9	+49	5.06%	209
Podiatrists & Chiropodists	5	5	6	7	7	+1	+1	-0	+2	+2	38.27%	7
Speech & Language Therapists	16	30	29	27	27	-0	-2	+0	-3	+11	-8.91%	31
<b>Therapy Professions</b>	<b>262</b>	<b>349</b>	<b>380</b>	<b>374</b>	<b>377</b>	<b>+31</b>	<b>-3</b>	<b>+3</b>	<b>+29</b>	<b>+115</b>	<b>8.21%</b>	<b>416</b>



Employment by Grade Group OCT 2024	WTE DEC 2019	WTE DEC 2022	WTE DEC 2023	WTE SEP 2024	WTE OCT 2024	WTE Change 2023	WTE Change 2024	WTE Change SEP 2024	WTE Change Dec 2022 to OCT 2024	WTE Change Dec 2019 to OCT 2024	% WTE Change Dec 2022 to OCT 2024	No. OCT 2024
<b>Overall</b>	<b>9,253</b>	<b>11,327</b>	<b>12,091</b>	<b>11,909</b>	<b>11,876</b>	<b>+765</b>	<b>-215</b>	<b>-33</b>	<b>+549</b>	<b>+2,623</b>	<b>4.85%</b>	<b>13,152</b>
Audiology	6	7	8	8	8	+1	+0	-0	+1	+2	12.57%	8
Biochemists	2	1	3	3	3	+2	-0	+0	+2	+1	193.00%	3
Cardiac Physiologists	36	37	42	44	43	+5	+1	-1	+6	+7	17.74%	49
Clinical Engineering	19	20	21	21	21	+1	-0	+0	+1	+2	3.11%	21
Dosimetrists	3	5	6	6	7	+1	+1	+1	+2	+4	40.00%	7
E.C.G. Technicians	2	1	1	0	0	-0	-0	+0	-1	-1	-56.19%	2
Gastrointestinal Physiologists		1	1	1	1	+0	+0	+0	+0	+1	1.01%	1
Medical Science	309	358	344	342	346	-13	+2	+4	-11	+37	-3.19%	379
Neuro-Physiologists	3	3	3	3	3	+0	+0	+0	+0	+0	0.33%	4
Perfusionists	4	3	3	3	4	+0	+1	+1	+1	-0	16.67%	4
Phlebotomists	21	29	33	34	34	+4	+1	-0	+5	+13	17.82%	40
Physicists	16	23	26	26	26	+4	-1	+0	+3	+10	12.16%	27
Radiation Therapists	21	35	35	35	35	+0	-0	+0	-0	+14	-1.22%	39
Radiographers	165	202	203	205	206	+1	+3	+1	+4	+41	2.09%	239
Respiratory Physiologists	8	10	10	10	10	+0	-0	+0	+0	+2	2.28%	10
Vascular Physiologists	4	4	4	4	4	-0	-0	-0	-0	-0	-10.53%	4
<b>Health Science/ Diagnostics</b>	<b>617</b>	<b>738</b>	<b>743</b>	<b>743</b>	<b>750</b>	<b>+6</b>	<b>+6</b>	<b>+7</b>	<b>+12</b>	<b>+133</b>	<b>1.62%</b>	<b>837</b>
Social Care	2	2	2	2	2	-0	+0	+0	-0	+0	-2.05%	3
<b>Social Care</b>	<b>2</b>	<b>2</b>	<b>2</b>	<b>2</b>	<b>2</b>	<b>-0</b>	<b>+0</b>	<b>+0</b>	<b>-0</b>	<b>+0</b>	<b>-2.05%</b>	<b>3</b>
Social Workers	26	43	54	52	53	+11	-1	+1	+10	+27	24.10%	59
<b>Social Workers</b>	<b>26</b>	<b>43</b>	<b>54</b>	<b>52</b>	<b>53</b>	<b>+11</b>	<b>-1</b>	<b>+1</b>	<b>+10</b>	<b>+27</b>	<b>24.10%</b>	<b>59</b>
Psychologists	1	3	7	7	7	+4	+0	+0	+4	+6	131.51%	8
<b>Psychologists</b>	<b>1</b>	<b>3</b>	<b>7</b>	<b>7</b>	<b>7</b>	<b>+4</b>	<b>+0</b>	<b>+0</b>	<b>+4</b>	<b>+6</b>	<b>131.51%</b>	<b>8</b>
Pharmacists	75	96	107	108	109	+11	+2	+1	+13	+35	13.40%	127
Pharmacy Technicians	62	95	96	97	95	+1	-0	-1	+0	+33	0.30%	104
<b>Pharmacy</b>	<b>137</b>	<b>191</b>	<b>203</b>	<b>205</b>	<b>204</b>	<b>+11</b>	<b>+2</b>	<b>-1</b>	<b>+13</b>	<b>+68</b>	<b>6.89%</b>	<b>231</b>
Counsellor Therapists	1	1	1	1	1	-0	+0	+0	-0	-0	-1.56%	1
Dental Hygienists	1	1	1	1	1	+0	+0	+0	+0	+0	0.00%	1
HSCP Trainees/Students	14	21	25	6	3	+4	-22	-3	-17	-11	-85.28%	9
Other Health & Social Care	1	5	9	9	10	+4	+1	+1	+5	+9	99.00%	10
Play Therapists/ Specialists	3	4	5	3	3	+1	-2	+1	-0	+1	-6.68%	5
<b>H&amp;S, Other</b>	<b>19</b>	<b>31</b>	<b>41</b>	<b>20</b>	<b>18</b>	<b>+10</b>	<b>-23</b>	<b>-2</b>	<b>-13</b>	<b>-1</b>	<b>-41.53%</b>	<b>26</b>
<b>Health &amp; Social Care Professionals</b>	<b>1,065</b>	<b>1,357</b>		<b>1,403</b>	<b>1,412</b>	<b>+73</b>	<b>-18</b>	<b>+9</b>	<b>+55</b>	<b>+348</b>	<b>4.08%</b>	<b>1,580</b>
CEO/Chief Officer	2	3	3	1	1	+0	-2	+0	-2	-1	-66.67%	1
General Managers	8	12	18	16	16	+6	-2	+0	+4	+8	35.36%	16
National Director, Assistant	3	4	3	2	2	-1	-1	+0	-2	-1	-50.00%	2
Other Executives	3	3	4	4	5	+1	+1	+1	+2	+2	65.89%	5
VIII	35	40	39	38	37	-0	-3	-1	-3	+2	-8.14%	38
<b>Management (VIII &amp; above)</b>	<b>51</b>	<b>62</b>	<b>67</b>	<b>61</b>	<b>61</b>	<b>+6</b>	<b>-7</b>	<b>-0</b>	<b>-1</b>	<b>+10</b>	<b>-1.77%</b>	<b>62</b>
Middle Management (V-VII)	232	377	440	426	434	+63	-6	+8	+57	+203	15.07%	454
Other Administrative	5	7	4			-3	-4		-7	-5	-100.00%	
<b>Administrative/ Supervisory (V to VII)</b>	<b>237</b>	<b>384</b>	<b>444</b>	<b>426</b>	<b>434</b>	<b>+60</b>	<b>-10</b>	<b>+8</b>	<b>+50</b>	<b>+198</b>	<b>13.08%</b>	<b>454</b>
General Administrative (III & IV)	1,048	1,252	1,346	1,273	1,268	+93	-77	-5	+16	+221	1.27%	1,404
<b>Clerical (III &amp; IV)</b>	<b>1,048</b>	<b>1,252</b>	<b>1,346</b>	<b>1,273</b>	<b>1,268</b>	<b>+93</b>	<b>-77</b>	<b>-5</b>	<b>+16</b>	<b>+221</b>	<b>1.27%</b>	<b>1,404</b>
<b>Management &amp; Administrative</b>	<b>1,335</b>	<b>1,698</b>		<b>1,760</b>	<b>1,763</b>	<b>+159</b>	<b>-94</b>	<b>+3</b>	<b>+65</b>	<b>+428</b>	<b>3.83%</b>	<b>1,920</b>
Catering	64	62	243	249	246	+181	+3	-3	+184	+182	298.69%	275
Household Services	381	451	273	238	238	-178	-35	+0	-213	-142	-47.17%	270
Other Labs & Associated	56	108	121	129	118	+13	-3	-11	+10	+62	9.42%	125
Other Support	145	145	147	147	148	+3	+0	+1	+3	+3	2.30%	161
Portering	190	154	154	169	166	+0	+12	-3	+13	-23	8.16%	176
<b>Support</b>	<b>836</b>	<b>919</b>	<b>939</b>	<b>933</b>	<b>916</b>	<b>+20</b>	<b>-22</b>	<b>-16</b>	<b>-3</b>	<b>+81</b>	<b>-0.28%</b>	<b>1,007</b>
Maintenance	102	102	103	94	93	+1	-11	-2	-10	-9	-9.39%	96
Technical Services	1	1	1	1		+0	-1	-1	-1	-1	-100.00%	
<b>Maintenance/ Technical</b>	<b>103</b>	<b>103</b>	<b>104</b>	<b>95</b>	<b>93</b>	<b>+1</b>	<b>-12</b>	<b>-3</b>	<b>-11</b>	<b>-10</b>	<b>-10.27%</b>	<b>96</b>
<b>General Support</b>	<b>939</b>	<b>1,022</b>		<b>1,028</b>	<b>1,009</b>	<b>+20</b>	<b>-34</b>	<b>-19</b>	<b>-13</b>	<b>+70</b>	<b>-1.29%</b>	<b>1,103</b>
Attendant/ Aide	166	196	205	201	200	+9	-5	-1	+3	+34	1.76%	214
Health Care Assistant/ Care Assistant	602	727	771	736	735	+44	-36	-0	+9	+134	1.17%	829

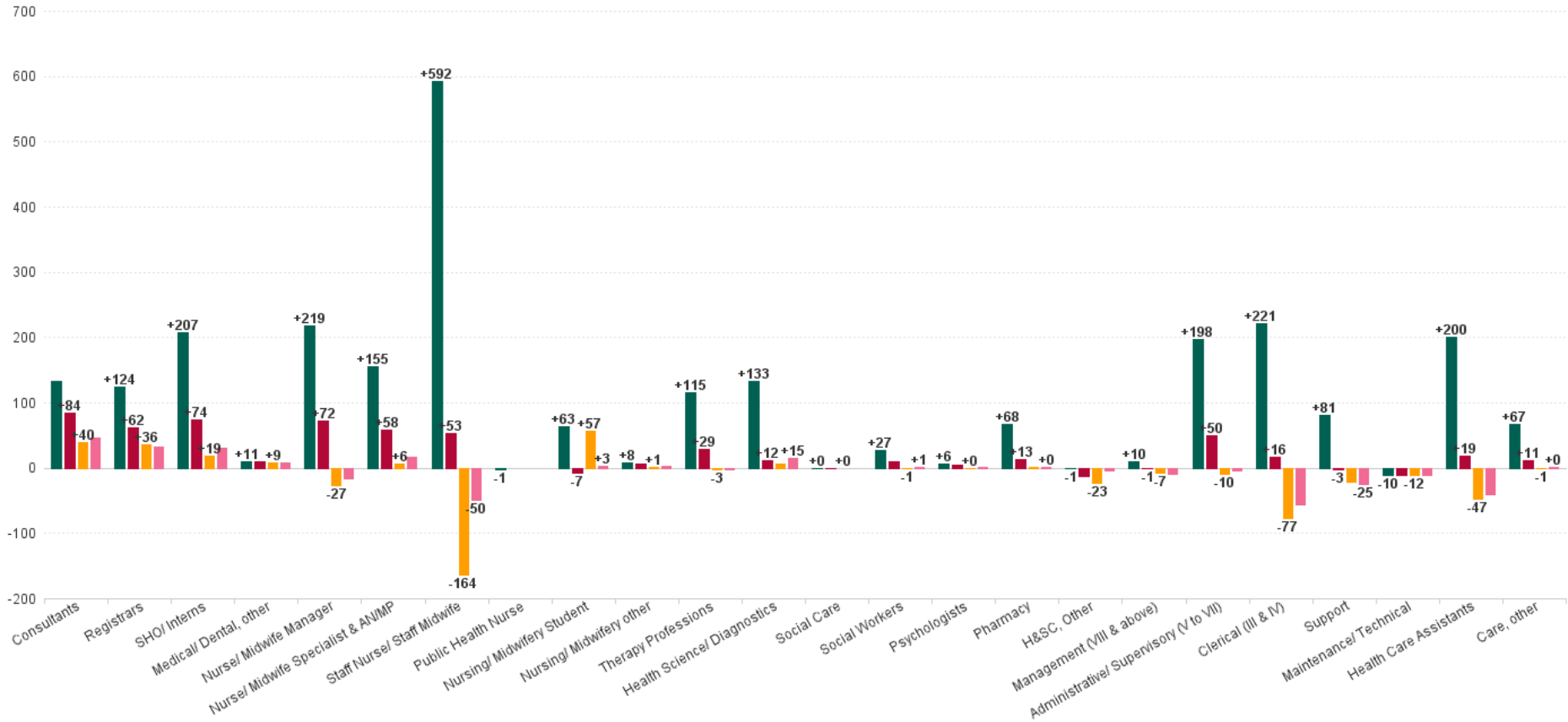


Employment by Grade Group OCT 2024	WTE DEC 2019	WTE DEC 2022	WTE DEC 2023	WTE SEP 2024	WTE OCT 2024	WTE Change 2023	WTE Change 2024	WTE Change SEP 2024	WTE Change Dec 2022 to OCT 2024	WTE Change Dec 2019 to OCT 2024	% WTE Change Dec 2022 to OCT 2024	No. OCT 2024
<b>Overall</b>	<b>9,253</b>	<b>11,327</b>	<b>12,091</b>	<b>11,909</b>	<b>11,876</b>	<b>+765</b>	<b>-215</b>	<b>-33</b>	<b>+549</b>	<b>+2,623</b>	<b>4.85%</b>	<b>13,152</b>
Health & Social Care Assistants	31	57	69	64	63	+12	-5	-1	+7	+32	11.90%	72
<b>Health Care Assistants</b>	<b>799</b>	<b>980</b>	<b>1,046</b>	<b>1,001</b>	<b>999</b>	<b>+65</b>	<b>-47</b>	<b>-2</b>	<b>+19</b>	<b>+200</b>	<b>1.91%</b>	<b>1,115</b>
Other Care Grades	22	80	93	90	92	+13	-1	+2	+12	+70	15.00%	101
Pastoral Care	9	6	6	6	6	-0	-0	-0	-1	-3	-8.97%	7
<b>Care, other</b>	<b>30</b>	<b>86</b>	<b>99</b>	<b>96</b>	<b>98</b>	<b>+13</b>	<b>-1</b>	<b>+1</b>	<b>+11</b>	<b>+67</b>	<b>13.29%</b>	<b>108</b>
<b>Patient &amp; Client Care</b>	<b>830</b>	<b>1,066</b>		<b>1,097</b>	<b>1,096</b>	<b>+78</b>	<b>-48</b>	<b>-0</b>	<b>+30</b>	<b>+267</b>	<b>2.83%</b>	<b>1,223</b>



# WTE Change by Staff Group

■ WTE change since DEC 2019 
 ■ WTE change since DEC 2022 
 ■ WTE change since DEC 2023 
 ■ WTE change since OCT 2023





## Employment Report by WTE, Headcount, Gender, Full-Time / Part-Time etc. OCT 2024

Demographic Grade Group OCT 2024	WTE OCT 2024	No. OCT 2024	WTE : No	Number Male %	Number Female %	Male WTE : No.	Female WTE : No	Perm Count %	Perm Count Male %	Perm Count Female %	Fulltime Count %	Part time Count %	FT Count Male %	FT Count Female %
<b>Total</b>	<b>11,876</b>	<b>13,152</b>	<b>1:0.9</b>	<b>22.65%</b>	<b>77.35%</b>	<b>1:1</b>	<b>1:0.9</b>	<b>83.30%</b>	<b>15.72%</b>	<b>67.58%</b>	<b>77.37%</b>	<b>22.63%</b>	<b>92.98%</b>	<b>72.80%</b>
Consultant Dentistry	4.39	6	1:0.7	33.33%	66.67%	1:0.7	1:0.7	66.67%	16.67%	50.00%	50.00%	50.00%	50.00%	50.00%
Consultant Emergency Medicine	27.6	29	1:1	62.07%	37.93%	1:1	1:0.9	89.66%	55.17%	34.48%	89.66%	10.34%	94.44%	81.82%
Consultant Medicine	185.04	198	1:0.9	56.57%	43.43%	1:0.9	1:0.9	77.27%	39.90%	37.37%	90.40%	9.60%	89.29%	91.86%
Consultant Surgery	109.65	116	1:0.9	81.03%	18.97%	1:1	1:0.9	77.59%	61.21%	16.38%	93.10%	6.90%	93.62%	90.91%
Other Medical	14.68	33	1:0.4	15.15%	84.85%	1:0.4	1:0.5	78.79%	9.09%	69.70%	3.03%	96.97%	20.00%	
Registrar	372.48	381	1:1	59.58%	40.42%	1:1	1:1	5.51%	3.94%	1.57%	98.16%	1.84%	99.56%	96.10%
Senior House Officer	583.58	591	1:1	50.08%	49.92%	1:1	1:1	0.34%	0.17%	0.17%	99.15%	0.85%	99.32%	98.98%
Senior Registrar	25.04	26	1:1	65.38%	34.62%	1:1	1:0.9	57.69%	30.77%	26.92%	92.31%	7.69%	100.00%	77.78%
Specialist Registrar	170.87	173	1:1	47.98%	52.02%	1:1	1:1				98.84%	1.16%	100.00%	97.78%
Consultant Anaesthesia	80.33	82	1:1	62.20%	37.80%	1:1	1:1	76.83%	48.78%	28.05%	97.56%	2.44%	96.08%	100.00%
Consultant Paediatrics	38.84	43	1:0.9	44.19%	55.81%	1:0.9	1:0.9	86.05%	37.21%	48.84%	83.72%	16.28%	89.47%	79.17%
Consultant Pathology	60.74	64	1:0.9	40.63%	59.38%	1:1	1:0.9	89.06%	34.38%	54.69%	89.06%	10.94%	96.15%	84.21%
Consultant Radiology	53.43	54	1:1	64.81%	35.19%	1:1	1:1	74.07%	44.44%	29.63%	100.00%		100.00%	100.00%
Interns	158.29	159	1:1	31.45%	68.55%	1:1	1:1				100.00%		100.00%	100.00%
Consultant Obstetrics & Gynaecology	32.76	35	1:0.9	48.57%	51.43%	1:1	1:0.9	77.14%	40.00%	37.14%	91.43%	8.57%	94.12%	88.89%
Dentists	6.24	7	1:0.9		100.00%	1:	1:0.9	100.00%		100.00%	42.86%	57.14%		42.86%
Consultant Intensive Care Medicine	1	1	1:1		100.00%	1:	1:1	100.00%		100.00%	100.00%			100.00%
Consultant Psychiatry	2	2	1:1		100.00%	1:	1:1	50.00%		50.00%	100.00%			100.00%
<b>Medical &amp; Dental</b>	<b>1,927</b>	<b>2,000</b>	<b>1:1</b>	<b>52.60%</b>	<b>47.40%</b>	<b>1:1</b>	<b>1:1</b>	<b>28.50%</b>	<b>15.50%</b>	<b>13.00%</b>	<b>94.80%</b>	<b>5.20%</b>	<b>96.86%</b>	<b>92.51%</b>
Nursing/ Midwifery awaiting registration	93.49	123	1:0.8	6.50%	93.50%	1:0.8	1:0.8	2.44%		2.44%	99.19%	0.81%	100.00%	99.13%
Staff Nurses [General/ Children's]	3,073.73	3,512	1:0.9	8.46%	91.54%	1:1	1:0.9	98.26%	8.37%	89.89%	68.42%	31.58%	92.26%	66.22%
Advanced Nurse/ Midwife Practitioner	118.72	125	1:0.9	10.40%	89.60%	1:1	1:0.9	98.40%	10.40%	88.00%	88.80%	11.20%	100.00%	87.50%
Pre-registration Nurse/ Midwife Intern	8.48	38	1:0.2	2.63%	97.37%	1:0.1	1:0.2				100.00%		100.00%	100.00%
Staff Midwives	280.65	340	1:0.8	0.29%	99.71%	1:1	1:0.8	97.35%	0.29%	97.06%	55.00%	45.00%	100.00%	54.87%
Adv. Nurse/ Midwife, Candidate	49.62	53	1:0.9	3.77%	96.23%	1:0.9	1:0.9	90.57%	3.77%	86.79%	92.45%	7.55%	100.00%	92.16%
Clinical Nurse/ Midwife Manager 1	132.77	144	1:0.9	12.50%	87.50%	1:1	1:0.9	100.00%	12.50%	87.50%	77.78%	22.22%	88.89%	76.19%
Clinical Nurse/ Midwife Manager 2	484.64	528	1:0.9	7.01%	92.99%	1:1	1:0.9	98.30%	7.01%	91.29%	77.46%	22.54%	86.49%	76.78%
Clinical Nurse/ Midwife Manager 3	66.59	70	1:1	5.71%	94.29%	1:0.9	1:1	100.00%	5.71%	94.29%	94.29%	5.71%	100.00%	93.94%



Demographic Grade Group OCT 2024	WTE OCT 2024	No. OCT 2024	WTE : No	Number Male %	Number Female %	Male WTE : No.	Female WTE : No	Perm Count %	Perm Count Male %	Perm Count Female %	Fulltime Count %	Part time Count %	FT Count Male %	FT Count Female %
<b>Total</b>	<b>11,876</b>	<b>13,152</b>	<b>1:0.9</b>	<b>22.65%</b>	<b>77.35%</b>	<b>1:1</b>	<b>1:0.9</b>	<b>83.30%</b>	<b>15.72%</b>	<b>67.58%</b>	<b>77.37%</b>	<b>22.63%</b>	<b>92.98%</b>	<b>72.80%</b>
Clinical Nurse/ Midwife Spec., Candidate	3.5	4	1:0.9	25.00%	75.00%	1:1	1:0.8	75.00%	25.00%	50.00%	75.00%	25.00%	100.00%	66.67%
Clinical Nurse/ Midwife Specialist	201.16	222	1:0.9	2.25%	97.75%	1:1	1:0.9	98.65%	2.25%	96.40%	78.83%	21.17%	100.00%	78.34%
Director Nursing/Midwifery, Assistant	80.51	86	1:0.9	9.30%	90.70%	1:1	1:0.9	100.00%	9.30%	90.70%	80.23%	19.77%	75.00%	80.77%
Nursing Education/Clinical	40.46	47	1:0.9	4.26%	95.74%	1:1	1:0.9	97.87%	4.26%	93.62%	72.34%	27.66%	100.00%	71.11%
Director of Nursing/Midwifery	20.99	21	1:1	14.29%	85.71%	1:1	1:1	90.48%	9.52%	80.95%	100.00%		100.00%	100.00%
Post-registration Nurse/ Midwife Student	10.99	11	1:1		100.00%	1:	1:1	72.73%		72.73%	100.00%			100.00%
Staff Nurse [Intellectual Disability]	2	2	1:1		100.00%	1:	1:1	100.00%		100.00%	100.00%			100.00%
<b>Nursing &amp; Midwifery</b>	<b>4,668</b>	<b>5,326</b>	<b>1:0.9</b>	<b>7.51%</b>	<b>92.49%</b>	<b>1:0.9</b>	<b>1:0.9</b>	<b>95.23%</b>	<b>7.27%</b>	<b>87.96%</b>	<b>71.57%</b>	<b>28.43%</b>	<b>92.00%</b>	<b>69.91%</b>
Phlebotomists	34.05	40	1:0.9	20.00%	80.00%	1:1	1:0.8	82.50%	15.00%	67.50%	65.00%	35.00%	87.50%	59.38%
Pharmacy Technicians	95.39	104	1:0.9	7.69%	92.31%	1:1	1:0.9	93.27%	7.69%	85.58%	80.77%	19.23%	100.00%	79.17%
Speech & Language Therapists	26.88	31	1:0.9		100.00%	1:	1:0.9	90.32%		90.32%	77.42%	22.58%		77.42%
Cardiac Physiologists	43.08	49	1:0.9	14.29%	85.71%	1:0.8	1:0.9	95.92%	14.29%	81.63%	81.63%	18.37%	85.71%	80.95%
Clinical Engineering	20.55	21	1:1	71.43%	28.57%	1:1	1:0.9	100.00%	71.43%	28.57%	95.24%	4.76%	100.00%	83.33%
Counsellor Therapists	0.63	1	1:0.6		100.00%	1:	1:0.6	100.00%		100.00%		100.00%		
Dietitians	56.41	64	1:0.9	1.56%	98.44%	1:1	1:0.9	98.44%	1.56%	96.88%	79.69%	20.31%	100.00%	79.37%
E.C.G. Technicians	0.46	2	1:0.2		100.00%	1:	1:0.2	50.00%		50.00%		100.00%		
Medical Science	346.13	379	1:0.9	16.36%	83.64%	1:1	1:0.9	98.15%	15.83%	82.32%	83.38%	16.62%	93.55%	81.39%
Neuro-Physiologists	3.06	4	1:0.8	25.00%	75.00%	1:1	1:0.7	100.00%	25.00%	75.00%	50.00%	50.00%	100.00%	33.33%
Occupational Therapists	92.33	100	1:0.9	8.00%	92.00%	1:1	1:0.9	89.00%	7.00%	82.00%	84.00%	16.00%	87.50%	83.70%
Perfusionists	3.5	4	1:0.9	25.00%	75.00%	1:0.5	1:1	75.00%	25.00%	50.00%	75.00%	25.00%		100.00%
Pharmacists	109.02	127	1:0.9	14.17%	85.83%	1:0.9	1:0.8	96.85%	14.17%	82.68%	67.72%	32.28%	94.44%	63.30%
Physicists	25.64	27	1:0.9	55.56%	44.44%	1:1	1:0.9	96.30%	51.85%	44.44%	96.30%	3.70%	100.00%	91.67%
Physiotherapists	190.18	209	1:0.9	27.75%	72.25%	1:1	1:0.9	94.26%	26.32%	67.94%	81.34%	18.66%	96.55%	75.50%
Play Therapists/ Specialists	3.49	5	1:0.7		100.00%	1:	1:0.7	80.00%		80.00%	40.00%	60.00%		40.00%
Psychologists	7.2	8	1:0.9	12.50%	87.50%	1:1	1:0.9	100.00%	12.50%	87.50%	75.00%	25.00%	100.00%	71.43%
Radiation Therapists	34.91	39	1:0.9	20.51%	79.49%	1:1	1:0.9	100.00%	20.51%	79.49%	92.31%	7.69%	100.00%	90.32%
Radiographers	206.14	239	1:0.9	17.15%	82.85%	1:1	1:0.8	99.16%	17.15%	82.01%	67.78%	32.22%	92.68%	62.63%
Social Care	2.39	3	1:0.8		100.00%	1:	1:0.8	33.33%		33.33%	33.33%	66.67%		33.33%
Social Workers	53.2	59	1:0.9	11.86%	88.14%	1:1	1:0.9	72.88%	10.17%	62.71%	72.88%	27.12%	100.00%	69.23%
Audiology	7.88	8	1:1		100.00%	1:	1:1	100.00%		100.00%	100.00%			100.00%
Biochemists	2.93	3	1:1		100.00%	1:	1:1	100.00%		100.00%	100.00%			100.00%
Dental Hygienists	1	1	1:1		100.00%	1:	1:1	100.00%		100.00%	100.00%			100.00%
Dosimetrists	7	7	1:1	14.29%	85.71%	1:1	1:1	100.00%	14.29%	85.71%	100.00%		100.00%	100.00%



Demographic Grade Group OCT 2024	WTE OCT 2024	No. OCT 2024	WTE : No	Number Male %	Number Female %	Male WTE : No.	Female WTE : No	Perm Count %	Perm Count Male %	Perm Count Female %	Fulltime Count %	Part time Count %	FT Count Male %	FT Count Female %
<b>Total</b>	<b>11,876</b>	<b>13,152</b>	<b>1:0.9</b>	<b>22.65%</b>	<b>77.35%</b>	<b>1:1</b>	<b>1:0.9</b>	<b>83.30%</b>	<b>15.72%</b>	<b>67.58%</b>	<b>77.37%</b>	<b>22.63%</b>	<b>92.98%</b>	<b>72.80%</b>
Gastrointestinal Physiologists	1	1	1:1	100.00%		1:1	1:	100.00%	100.00%		100.00%		100.00%	
Orthoptists	4.73	5	1:0.9	20.00%	80.00%	1:1	1:0.9	100.00%	20.00%	80.00%	100.00%		100.00%	100.00%
Other Health & Social Care	9.91	10	1:1	10.00%	90.00%	1:0.9	1:1	70.00%	10.00%	60.00%	100.00%		100.00%	100.00%
Podiatrists & Chiropodists	6.72	7	1:1	28.57%	71.43%	1:1	1:0.9	85.71%	28.57%	57.14%	100.00%		100.00%	100.00%
Respiratory Physiologists	9.85	10	1:1	10.00%	90.00%	1:1	1:1	100.00%	10.00%	90.00%	100.00%		100.00%	100.00%
Vascular Physiologists	3.57	4	1:0.9	25.00%	75.00%	1:1	1:0.9	100.00%	25.00%	75.00%	100.00%		100.00%	100.00%
HSCP Trainees/Students	3.02	9	1:0.3	33.33%	66.67%	1:0.2	1:0.4					100.00%		
<b>Health &amp; Social Care Professionals</b>	<b>1,412</b>	<b>1,580</b>	<b>1:0.9</b>	<b>17.09%</b>	<b>82.91%</b>	<b>1:1</b>	<b>1:0.9</b>	<b>94.24%</b>	<b>16.27%</b>	<b>77.97%</b>	<b>78.35%</b>	<b>21.65%</b>	<b>93.70%</b>	<b>75.19%</b>
General Administrative (III & IV)	1,268.26	1,404	1:0.9	12.68%	87.32%	1:1	1:0.9	88.60%	10.33%	78.28%	75.85%	24.15%	95.51%	73.00%
Middle Management (V-VII)	434.26	454	1:1	14.54%	85.46%	1:1	1:1	98.68%	14.32%	84.36%	89.43%	10.57%	100.00%	87.63%
VIII	36.58	38	1:1	34.21%	65.79%	1:1	1:1	84.21%	31.58%	52.63%	97.37%	2.63%	92.31%	100.00%
CEO/Chief Officer	1	1	1:1		100.00%	1:	1:1	100.00%		100.00%	100.00%			100.00%
General Managers	16	16	1:1	12.50%	87.50%	1:1	1:1	100.00%	12.50%	87.50%	100.00%		100.00%	100.00%
National Director, Assistant	2	2	1:1	100.00%		1:1	1:	100.00%	100.00%		100.00%		100.00%	
Other Executives	4.96	5	1:1	80.00%	20.00%	1:1	1:1	100.00%	80.00%	20.00%	100.00%		100.00%	100.00%
<b>Management &amp; Administrative</b>	<b>1,763</b>	<b>1,920</b>	<b>1:0.9</b>	<b>13.80%</b>	<b>86.20%</b>	<b>1:1</b>	<b>1:0.9</b>	<b>91.04%</b>	<b>11.98%</b>	<b>79.06%</b>	<b>79.79%</b>	<b>20.21%</b>	<b>96.60%</b>	<b>77.10%</b>
Household Services	238.39	270	1:0.9	29.63%	70.37%	1:1	1:0.9	81.11%	22.22%	58.89%	65.56%	34.44%	83.75%	57.89%
Other Labs & Associated	118.04	125	1:0.9	33.60%	66.40%	1:0.9	1:1	70.40%	25.60%	44.80%	91.20%	8.80%	90.48%	91.57%
Catering	245.91	275	1:0.9	33.82%	66.18%	1:0.9	1:0.9	94.55%	29.82%	64.73%	70.55%	29.45%	90.32%	60.44%
Maintenance	92.53	96	1:1	100.00%		1:1	1:	98.96%	98.96%		97.92%	2.08%	97.92%	
Other Support	147.88	161	1:0.9	65.84%	34.16%	1:0.9	1:0.9	92.55%	62.11%	30.43%	78.88%	21.12%	89.62%	58.18%
Portering	166.25	176	1:0.9	84.09%	15.91%	1:1	1:0.9	87.50%	72.16%	15.34%	88.64%	11.36%	93.24%	64.29%
<b>General Support</b>	<b>1,009</b>	<b>1,103</b>	<b>1:0.9</b>	<b>51.22%</b>	<b>48.78%</b>	<b>1:1</b>	<b>1:0.9</b>	<b>87.49%</b>	<b>44.97%</b>	<b>42.52%</b>	<b>78.15%</b>	<b>21.85%</b>	<b>91.33%</b>	<b>64.31%</b>
Health Care Assistant/ Care Assistant	735.48	829	1:0.9	25.33%	74.67%	1:0.9	1:0.9	89.87%	22.44%	67.43%	63.33%	36.67%	74.29%	59.61%
Pastoral Care	5.58	7	1:0.8	42.86%	57.14%	1:0.8	1:0.8	57.14%		57.14%	57.14%	42.86%	66.67%	50.00%
Health & Social Care Assistants	63.45	72	1:0.9	18.06%	81.94%	1:0.9	1:0.9	88.89%	15.28%	73.61%	65.28%	34.72%	76.92%	62.71%
Attendant/ Aide	199.95	214	1:0.9	67.76%	32.24%	1:1	1:0.9	93.46%	62.62%	30.84%	85.51%	14.49%	93.79%	68.12%
Other Care Grades	92.02	101	1:0.9	55.45%	44.55%	1:1	1:0.8	97.03%	55.45%	41.58%	76.24%	23.76%	96.43%	51.11%
<b>Patient &amp; Client Care</b>	<b>1,096</b>	<b>1,223</b>	<b>1:0.9</b>	<b>34.91%</b>	<b>65.09%</b>	<b>1:0.9</b>	<b>1:0.9</b>	<b>90.84%</b>	<b>31.64%</b>	<b>59.20%</b>	<b>68.36%</b>	<b>31.64%</b>	<b>83.84%</b>	<b>60.05%</b>



Saolta University Hospital Care OCT 2024

Demographic Hospital OCT 2024	WTE OCT 2024	No. OCT 2024	WTE : No	Number Male %	Number Female %	Male WTE : No.	Female WTE : No	Perm Count %	Perm Count Male %	Perm Count Female %	Fulltime Count %	Part time Count %	FT Count Male %	FT Count Female %
<b>Total</b>	<b>11,876</b>	<b>13,152</b>	<b>1:0.9</b>	<b>22.65%</b>	<b>77.35%</b>	<b>1:1</b>	<b>1:0.9</b>	<b>83.30%</b>	<b>15.72%</b>	<b>67.58%</b>	<b>77.37%</b>	<b>22.63%</b>	<b>92.98%</b>	<b>72.80%</b>
Galway University	4,441	4,890	1:0.9	23.03%	76.97%	1:1	1:0.9	81.74%	15.50%	66.24%	80.84%	19.16%	93.69%	76.99%
Letterkenny University	2,185	2,426	1:0.9	23.54%	76.46%	1:1	1:0.9	82.19%	16.24%	65.95%	71.56%	28.44%	90.19%	65.82%
Mayo University	1,476	1,651	1:0.9	21.32%	78.68%	1:1	1:0.9	85.58%	14.60%	70.99%	78.68%	21.32%	95.17%	74.21%
Portiuncula University	1,062	1,183	1:0.9	20.71%	79.29%	1:1	1:0.9	83.52%	13.52%	69.99%	72.95%	27.05%	91.84%	68.02%
Roscommon University	454	508	1:0.9	19.29%	80.71%	1:1	1:0.9	83.66%	14.37%	69.29%	73.62%	26.38%	93.88%	68.78%
Saolta HG HQ	110	114	1:1	19.30%	80.70%	1:1	1:1	86.84%	15.79%	71.05%	94.74%	5.26%	100.00%	93.48%
Sligo University	2,148	2,380	1:0.9	23.74%	76.26%	1:1	1:0.9	85.67%	17.77%	67.90%	77.44%	22.56%	93.10%	72.56%



Saolta University Hospital Care Employment Report: OC

Month-on-Month Summary

WTE change since SEP 2024	% WTE change since SEP 2024	Overall	Consultants	Registrars	SHO/ Interns	Medical/ Dental other	Medical & Dental	Nurse/ Midwife Manager	Nurse/ Midwife Specialist & ANKP	Staff Nurse/ Staff Midwife	Public Health Nurse	Nursing/ Midwifery Student	Nursing/ Midwifery other	Nursing & Midwifery	Therapy Professionals	Health Science/ Diagnostics	Social Care	Social Workers	Psychologists	Pharmacy	HSSC Other	Health & Social Care Professionals	Management (VII & above)	Administrative /Supervisory (V to VI)	Central (III & IV)	Management & Administrative	Support	Maintenance/ Technical	General Support	Health Care Assistants	Care, other	Patient & Client Care
Overall	-0.28%	-22.8	+12.5	+11.2	+1.8	+1.1	+26.6	+6.1	+1.8	-6.3		-17.9	-1.3	-51.5	+2.8	+6.6	+0.1	+1.2	+8.4	-6.7	-1.5	+8.8	-8.4	+8.2	-5.2	+2.7	-16.1	-2.8	-18.9	-1.9	+1.4	-6.5
Galway University	48046	-0.18%	-7.9	+7.5	+2.9	-0.2	+1.0	+11.2	+2.8	-0.1	-18.7	-3.9	-1.0	-20.9	+3.0	+6.6	+0.1	+0.4	+0.4	+1.5	-1.5	+10.4	+0.1	+2.7	-0.8	+2.0	-8.0	-3.2	-11.2	+0.4	+0.1	+0.6
Sligo University	48047	+0.05%	+1.1	+3.8	+3.5	+1.7	+0.0	+9.0	-0.1	+0.8	-9.6	-1.2	-0.1	-10.1	-0.5	+2.3		+0.8	+0.0	-0.6	-0.7	+1.3	+0.5	+0.6	-2.9	-1.8	-0.8	-0.0	-0.9	+2.3	+1.2	+3.5
Letterkenry University	48048	-0.62%	-13.6	+1.2	+0.2	+0.3	+0.0	+1.6	-0.7	+2.6	-4.2	-6.0	-0.9	-9.2	-1.3	-1.6		-0.0		-1.4	+0.5	-3.9	+0.0	+1.2	+1.8	+3.1	-3.5	-0.1	-3.6	-1.2	-6.4	-1.6
Mayo University	48049	-0.71%	-10.5	+0.3	+2.4	+0.7	-0.0	+3.4	+0.8	-0.6	-4.9	-7.7	+0.7	-11.7	+1.1	+0.2		+0.1		-1.0	+0.0	+0.5	-1.0	+0.1	+0.9	-0.1	-2.2	+0.5	-1.7	-1.5	+0.5	-1.0
Portlincula University	48050	-0.19%	-2.0	-0.5	+1.4	-0.7		+0.1	+2.8	-1.0	-1.5	+2.3	+0.0	+2.5	+0.6	-0.8		-0.1		+0.8	+0.2	+0.6	+0.0	+0.4	-2.7	-2.3	-1.1	+0.0	-1.1	-1.9	+0.0	-1.9
Roscommon University	48051	-0.10%	-0.5	+0.3	+1.0	-0.1		+1.2	+0.1	+0.1	-1.3		-1.4	+0.0	-2.5	+0.0	-0.1		+0.0		+0.0		+0.0	+2.0	-0.5	+1.5	-0.5	-0.0	-0.5	-0.1	+0.0	-0.1
Saolta HQ	48052	+0.61%	+0.7	+0.0			+0.0	+0.4		+0.0			+0.4		+0.0							+0.0	+0.2	+1.2	-1.0	+0.3						



Saolta University Hospital Care Employment Report: OCT 2024

Year-to-Date Summary

WTE change since DEC 2023	% WTE change since DEC 2023	Overall	Consultants	Registrars	SHO/ Interns	Medical/ Dental, other	Medical & Dental	Nurse/ Midwife Manager	Nurse/ Midwife Specialist & ANMP	Staff Nurse/ Staff Midwife	Public Health Nurse	Nursing/ Midwifery Student	Nursing/ Midwifery other	Nursing & Midwifery	Therapy Professions	Health Science/ Diagnostics	Social Care	Social Workers	Psychologists	Pharmacy	H&SC, Other	Health & Social Care Professionals	Management (VIII & above)	Administrative / Supervisory (V to VII)	Clerical (III & IV)	Management & Administrative	Support	Maintenance/ Technical	General Support	Health Care Assistants	Care, other	Patient & Client Care
<b>Overall</b>	-1.78%	-215	+40	+36	+19	+9	+103	-27	+6	-164		+57	+1	-126	-3	+6	+0	-1	+0	+2	-23	-18	-7	-10	-77	-84	-22	-12	-34	-47	-1	-48
Galway University	-2.35%	-107	+18	+18	+14	+9	+59	-10	+3	-112		+32	-4	-92	-0	+8	+0	-1	+0	+1	-14	-6	-1	-4	-32	-37	-6	-4	-10	-22	+1	-22
Sligo University	-0.17%	-4	+10	+4	+10	-1	+24	+2	-2	-20		+8	+2	-10	-4	+3		+0	+0	+2	-1	-1	+0	+2	-14	-13	+2	-0	+2	-4	-3	-6
Letcherenny University	-0.89%	-20	+8	+12	-3	+0	+17	-13	+9	-18		+23	+4	+5	+2	-0		-0		-2	-4	-4	-0	-5	-5	-11	-10	-3	-13	-11	-1	-13
Mayo University	-2.68%	-41	+5	+1	-3		+4	-3	+1	-5		-11	-0	-19	+1	-1		+0		-1	-1	-1	-1	-3	-13	-16	-1	-5	-6	-4	+2	-2
Portluncula University	-1.30%	-14	-1	-1	+4		+3	+2	-3	-5		+5	-0	-1	-0	-3		+0		+3	-3	-3	+0	+4	-8	-5	-4	+0	-4	-3	+0	-3
Roscommon University	-4.60%	-22	-1	+1	-3		-3	-4	-2	-4		+0	+0	-10	-2	-0		-0		-1		-2	-2	+2	-2	-2	-2	-0	-2	-3	+0	-3
Saolta HG HQ	-7.36%	-9	+0				+0	+0		+1				+1	+0					-1		+0	-3	-5	-2	-10						



Saolta University Hospital Care Employment Report: OCT 2024

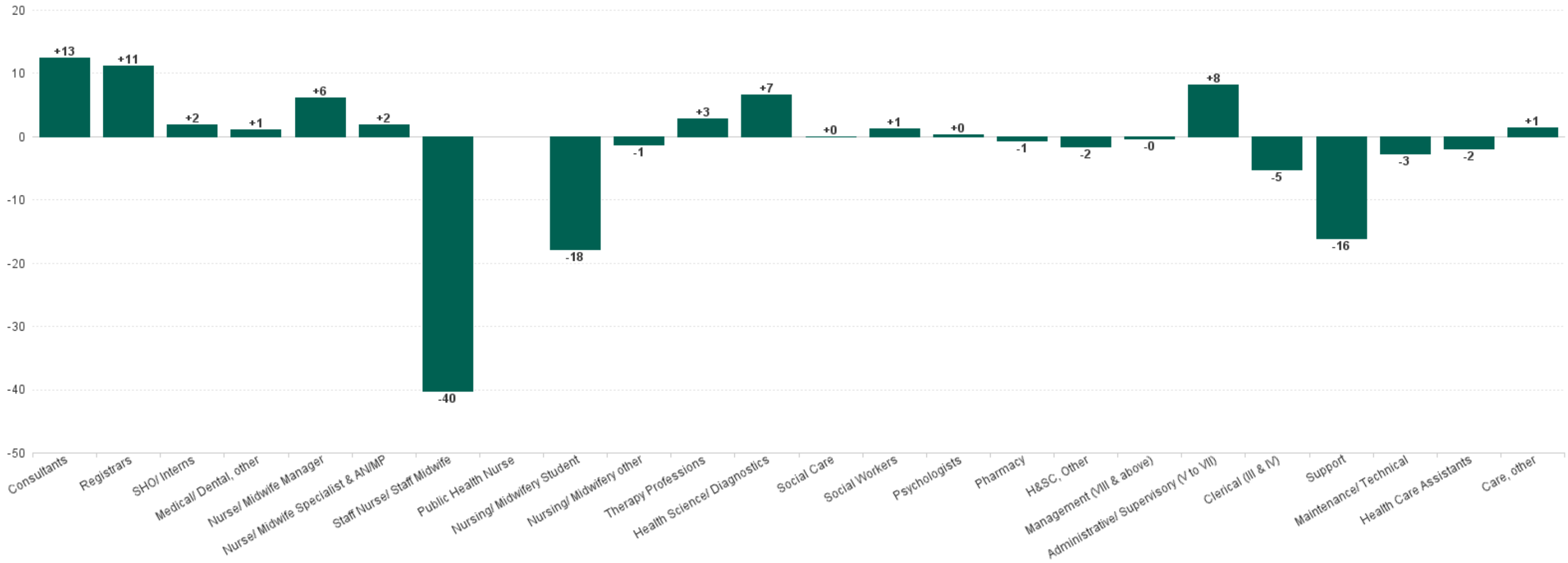
Year-on-Year Summary

WTE change since OCT 2023	% WTE change since OCT 2023	Overall	Consultants	Registrars	SHO/ Interns	Medical/ Dental, other	Medical & Dental	Nurse/ Midwife Manager	Nurse/ Midwife Specialist & ANMP	Staff Nurse/ Staff Midwife	Public Health Nurse	Nursing/ Midwifery Student	Nursing/ Midwifery other	Nursing & Midwifery	Therapy Professors	Health Science/ Diagnostics	Social Care	Social Workers	Psychologists	Pharmacy	H&SC, Other	Health & Social Care Professionals	Management (VIII & above)	Administrative / Supervisory (V to VII)	Clerical (III & IV)	Management & Administrative	Support	Maintenance/ Technical	General Support	Health Care Assistants	Care, other	Patient & Client Care	
<b>Overall</b>	<b>-0.47%</b>	<b>-56</b>	<b>+46</b>	<b>+33</b>	<b>+31</b>	<b>+9</b>	<b>+118</b>	<b>-16</b>	<b>+17</b>	<b>-50</b>		<b>+3</b>	<b>+3</b>	<b>-42</b>	<b>-3</b>	<b>+15</b>	<b>+0</b>	<b>+1</b>	<b>+1</b>	<b>+0</b>	<b>-3</b>	<b>+12</b>	<b>-9</b>	<b>-4</b>	<b>-55</b>	<b>-68</b>	<b>-25</b>	<b>-10</b>	<b>-35</b>	<b>-41</b>	<b>+0</b>	<b>-41</b>	
Galway University	-0.73%	-33	+18	+16	+20	+9	+63	-10	+10	-71		+24	-4	-51	+0	+8	+0	-1	+1	-1	-4	+4	-1	-1	-15	-18	-4	-4	-7	-24	+0	-24	
Sligo University	+0.85%	+18	+10	+7	+11	-1	+28	+10	+1	-15		+5	+2	+2	-4	+6	+0	+0	+0	+1	+2	+5	+0	+3	-12	-8	-0	+0	-0	-7	-2	-9	
Letterkenny University	+0.25%	+5	+8	+10	-1	+0	+16	-15	+10	+15		+2	+4	+15	+4	+0		-0			-1	-1	+3	-1	-8	-3	-10	-10	-3	-13	-6	-0	-6
Mayo University	-1.93%	-29	+7	-1	-0		+6	-1	+3	+7		-29	+2	-17	-1	+1		+2		-1	+0	+2	-1	-2	-10	-13	-3	-4	-6	-3	+2	-1	
Portluncula University	+1.22%	+13	+3	-0	+5		+8	+1	-4	+11		+1	-0	+10	-1	+1		+0		+3	-0	+2	+0	+4	-8	-4	-5	+0	-5	+3	+0	+3	
Roscommon University	-4.27%	-20	-0	+0	-3		-3	-3	-3	+3		-0	+0	-3	-1	-1		+0			-1	-3	-2	+1	-4	-4	-3	-0	-3	-4	+0	-4	
Saolta HG HQ	-8.43%	-10	+0				+0	+1		+1				+2		+0						+0	-5	-5	-3	-12							



Saolta University Hospital Care Employment Report: OCT 20

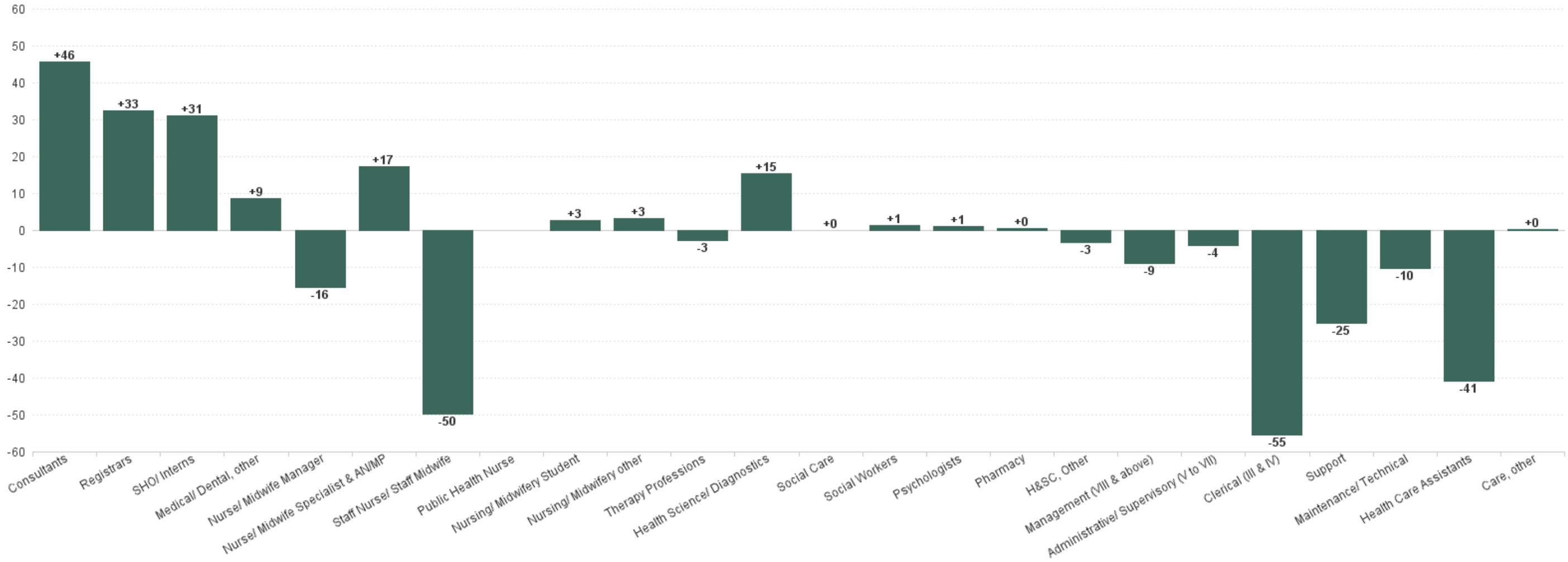
Previous Month Summary Chart: Change since SEP 2024





Saolta University Hospital Care Employment Report: OCT 2024

Previous Year Summary Chart: Change since OCT 2023



Saolta University Hospital Care Employment Report: OCT 2

YTD Summary Chart: Change since DEC 2023

