

Saolta University Hospital Care Employment Report: SEP 2024

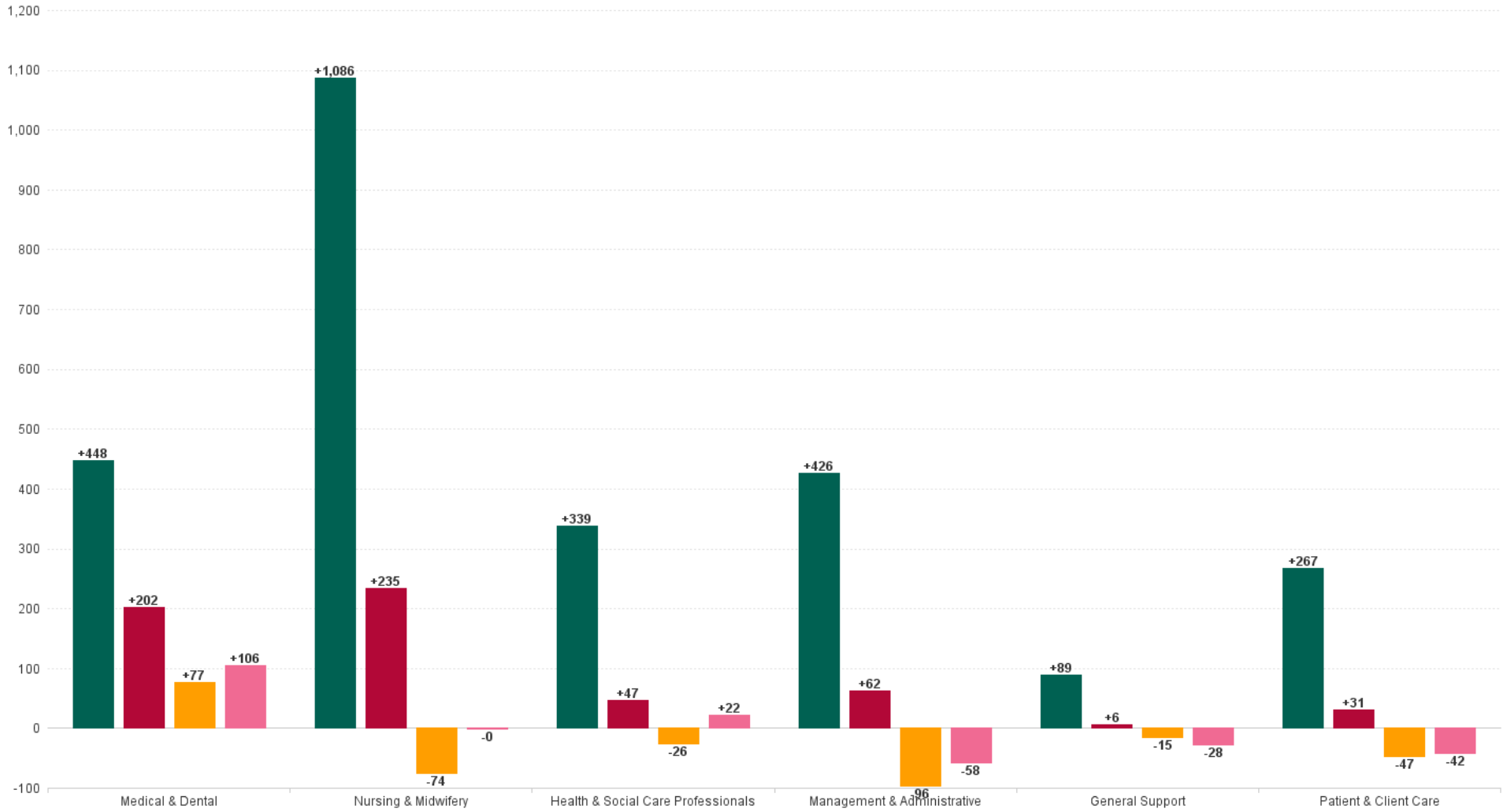
Employment by Staff Group (1) SEP 2024

Employment by Staff Group (1) SEP 2024	WTE DEC 2019	WTE DEC 2022	WTE DEC 2023	WTE AUG 2024	WTE SEP 2024	WTE Change 2023	WTE Change 2024	WTE Change AUG 2024	WTE Change Dec 2022 to SEP 2024	WTE Change Dec 2019 to SEP 2024	% WTE Change Dec 2022 to SEP 2024	No. SEP 2024
Overall	9,253	11,327	12,091	11,921	11,909	+765	-183	-12	+582	+2,656	5.14%	13,227
Consultants	463	511	556	583	583	+45	+27	+0	+72	+121	14.04%	626
Registrars	445	507	533	547	557	+26	+25	+10	+50	+113	9.96%	575
SHO/ Interns	535	668	723	716	740	+55	+17	+24	+72	+205	10.78%	753
Medical/ Dental, other	10	12	12	18	20	+0	+7	+1	+8	+10	66.83%	40
Medical & Dental	1,452	1,698	1,824	1,865	1,900	+126	+77	+36	+202	+448	11.91%	1,994
Nurse/ Midwife Manager	567	713	812	787	779	+99	-33	-8	+66	+212	9.25%	840
Nurse/ Midwife Specialist & AN/MP	218	315	367	375	371	+53	+4	-4	+57	+153	18.00%	403
Staff Nurse/ Staff Midwife	2,764	3,303	3,520	3,430	3,397	+217	-123	-33	+94	+632	2.84%	3,883
Public Health Nurse	1									-1	-100.00%	
Nursing/ Midwifery awaiting registration	36	101	41.41		59	-60	+18	+59	-42	+23	-41.40%	65
Post-registration Nurse/ Midwife Student	12	9	11	12	11	+2	+0	-1	+2	-1	23.71%	12
Pre-registration Nurse/ Midwife Intern	2	10	3.27	93	60	-7	+57	-33	+50	+59	486.42%	123
Nursing/ Midwifery Student	50	120	56	105	131	-65	+75	+25	+10	+81	8.62%	200
Nursing/ Midwifery other	33	34	39	44	42	+5	+3	-2	+8	+9	23.11%	49
Nursing & Midwifery	3,633	4,485	4,794	4,741	4,720	+309	-74	-22	+235	+1,086	5.23%	5,375
Dietitians	37	49	56.04	56	57	+7	+1	+1	+8	+19	15.40%	64
Occupational Therapists	57	79	89.25	91	91	+10	+2	+1	+12	+35	15.77%	99
Orthoptists	6	5	4.96	5	5	-0	-0	-0	-0	-1	-6.63%	5
Physiotherapists	141	181	194.72	189	188	+14	-7	-1	+7	+47	3.86%	210
Podiatrists & Chiropodists	5	5	5.92	7	7	+1	+1	+0	+2	+2	43.83%	7
Speech & Language Therapists	16	30	29.16	27	27	-0	-3	-0	-3	+10	-10.20%	31
Therapy Professions	262	349	380	375	374	+31	-6	-0	+26	+112	7.39%	416
Health Science/ Diagnostics	617	738	743	744	743	+6	-0	-1	+5	+126	0.73%	831
Social Care	2	2	2	2	2	-0	-0	-0	-0	-0	-4.10%	3
Social Workers	26	43	54	52	52	+11	-2	-0	+9	+26	21.37%	59
Psychologists	1	3	7	6	7	+4	-0	+0	+4	+6	119.61%	8
Pharmacy	137	191	203	206	205	+11	+3	-1	+14	+68	7.24%	233
H&SC, Other	19	31	41	21	20	+10	-21	-1	-11	+0	-36.54%	33
Health & Social Care Professionals	1,065	1,357	1,430	1,406	1,403	+73	-26	-3	+46	+339	3.43%	1,583
Management (VIII & above)	51	62	67	63	61	+6	-6	-2	-1	+10	-1.20%	63
Administrative/ Supervisory (V to VII)	237	384	444	429	426	+60	-18	-3	+42	+189	10.94%	448
Clerical (III & IV)	1,048	1,252	1,346	1,286	1,273	+93	-72	-12	+21	+226	1.68%	1,417
Management & Administrative	1,335	1,698	1,857	1,777	1,760	+159	-96	-17	+62	+426	3.67%	1,928
Support	836	919	939	937	933	+20	-6	-5	+14	+97	1.48%	1,025
Maintenance/ Technical	103	103	104	96	95	+1	-9	-0	-8	-8	-7.57%	98
General Support	939	1,022	1,043	1,033	1,028	+21	-15	-5	+6	+89	0.56%	1,123
Health Care Assistants	799	980	1,046	1,003	1,001	+65	-45	-2	+21	+202	2.10%	1,117
Care, other	30	86	99	96	96	+13	-3	+0	+10	+66	11.67%	107
Patient & Client Care	830	1,066	1,144	1,099	1,097	+78	-47	-2	+31	+267	2.88%	1,224



WTE Change by Staff Category

■ WTE change since DEC 2019
 ■ WTE change since DEC 2022
 ■ WTE change since DEC 2023
 ■ WTE change since SEP 2023

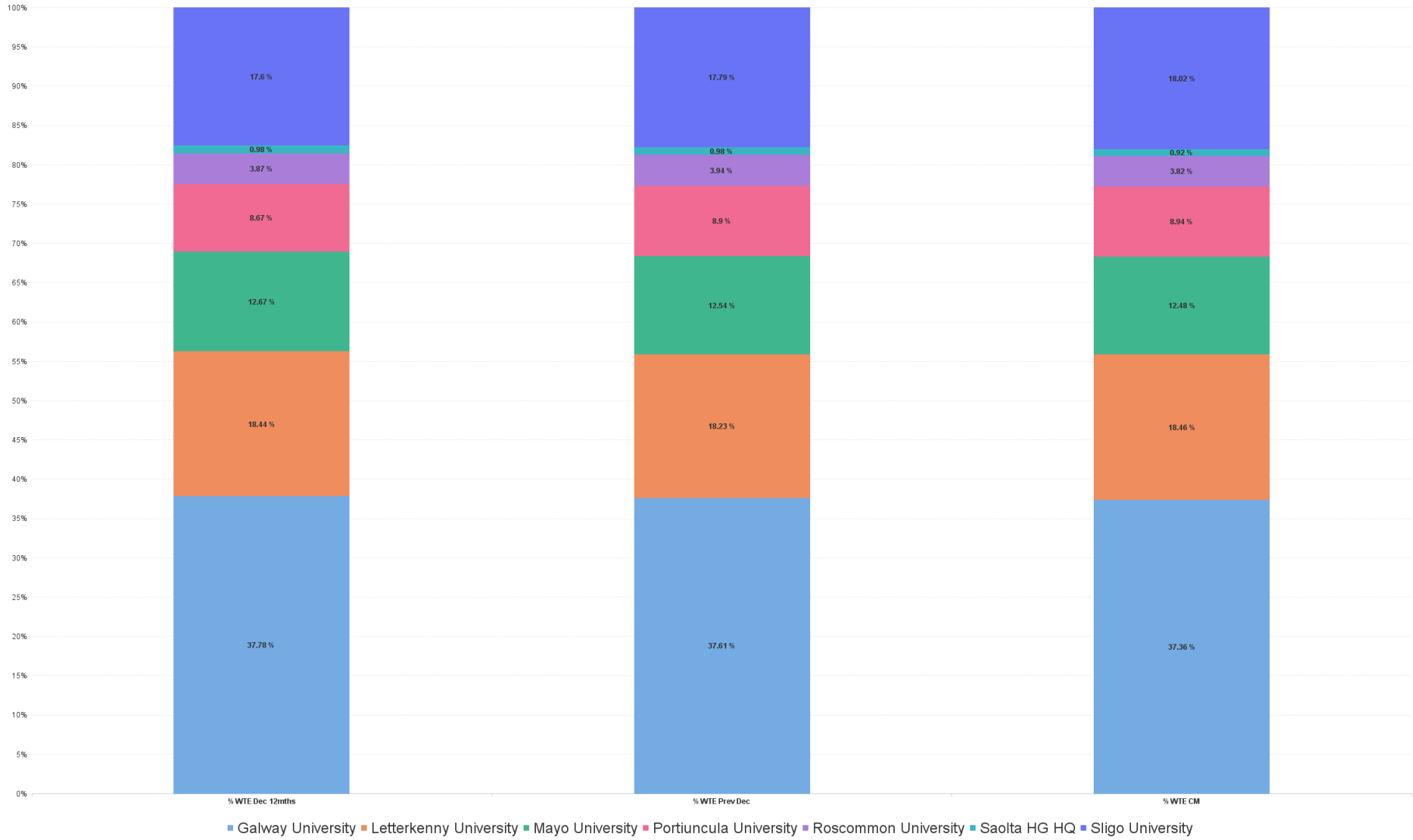


Employment Report by Hospital: SEP 2024

Hospital SEP 2024	WTE DEC 2019	WTE DEC 2022	WTE DEC 2023	WTE AUG 2024	WTE SEP 2024	WTE Change 2023	WTE Change 2024	WTE Change AUG 2024	WTE Change Dec 2022 to SEP 2024	WTE Change Dec 2019 to SEP 2024	% WTE Change Dec 2022 to SEP 2024	No. SEP 2024
Overall	9,253	11,327	12,091	11,921	11,909	+765	-183	-12	+582	+2,656	5.14%	13,227
Galway University	3,607	4,280	4,548	4,456	4,449	+268	-99	-7	+169	+842	3.96%	4,923
Letterkenny University	1,607	2,089	2,204	2,205	2,198	+116	-6	-6	+110	+591	5.26%	2,449
Mayo University	1,150	1,435	1,516	1,481	1,486	+82	-30	+5	+52	+337	3.60%	1,657
Portiuncula University	790	982	1,076	1,070	1,064	+95	-12	-5	+83	+275	8.44%	1,184
Roscommon University	333	438	476	457	455	+37	-21	-3	+16	+121	3.66%	508
Saolta HG HQ	79	110	119	111	109	+8	-9	-1	-1	+31	-0.87%	114
Sligo University	1,688	1,993	2,151	2,141	2,147	+158	-5	+5	+153	+459	7.69%	2,392



% Total by Hospital



Employment Report by HSE/S38: SEP 2024

Administration SEP 2024	WTE DEC 2019	WTE DEC 2022	WTE DEC 2023	WTE AUG 2024	WTE SEP 2024	WTE Change 2023	WTE Change 2024	WTE Change AUG 2024	WTE Change Dec 2022 to SEP 2024	WTE Change Dec 2019 to SEP 2024	% WTE Change Dec 2022 to SEP 2024	No. SEP 2024
Overall	9,253	11,327	12,091	11,921	11,909	+765	-183	-12	+582	+2,656	5.14%	13,227
Health Service Executive	9,253	11,327	12,091	11,921	11,909	+765	-183	-12	+582	+2,656	5.14%	13,227



Employment Report by Administration: SEP 2024

Health Service Executive

SEP 2024	WTE DEC 2019	WTE DEC 2022	WTE DEC 2023	WTE AUG 2024	WTE SEP 2024	WTE Change 2023	WTE Change 2024	WTE Change AUG 2024	WTE Change Dec 2022 to SEP 2024	WTE Change Dec 2019 to SEP 2024	% WTE Change Dec 2022 to SEP 2024	No. SEP 2024
Total Health Service Executive	9,253	11,327	12,091	11,921	11,909	+765	-183	-12	+582	+2,656	5.14%	13,227
Consultants	463	511	556	583	583	+45	+27	+0	+72	+121	14.04%	626
Registrars	445	507	533	547	557	+26	+25	+10	+50	+113	9.96%	575
SHO/ Interns	535	668	723	716	740	+55	+17	+24	+72	+205	10.78%	753
Medical/ Dental, other	10	12	12	18	20	+0	+7	+1	+8	+10	66.83%	40
Medical & Dental	1,452	1,698	1,824	1,865	1,900	+126	+77	+36	+202	+448	11.91%	1,994
Nurse/ Midwife Manager	567	713	812	787	779	+99	-33	-8	+66	+212	9.25%	840
Nurse/ Midwife Specialist & AN/MP	218	315	367	375	371	+53	+4	-4	+57	+153	18.00%	403
Staff Nurse/ Staff Midwife	2,764	3,303	3,520	3,430	3,397	+217	-123	-33	+94	+632	2.84%	3,883
Public Health Nurse	1									-1	-100.00%	
<i>Nursing/ Midwifery awaiting registration</i>	36	101	+41		59	+65	+18	+5	-42	+23	-42	65
<i>Post-registration Nurse/ Midwife Student</i>	12	9	+11	12	11	-3	+0	+2	+2	-1	+2	12
<i>Pre-registration Nurse/ Midwife Intern</i>	2	10	+3	93	60	+9	+57	+0	+50	+59	+50	123
Nursing/ Midwifery Student	50	120	56	105	131	-65	+75	+25	+10	+81	8.62%	200
Nursing/ Midwifery other	33	34	39	44	42	+5	+3	-2	+8	+9	23.11%	49
Nursing & Midwifery	3,633	4,485	4,794	4,741	4,720	+309	-74	-22	+235	+1,086	5.23%	5,375
<i>Dietitians</i>	37	49	+56	56	57	+12	+1	+3	+8	+19	+8	64
<i>Occupational Therapists</i>	57	79	+89	91	91	+22	+2	+3	+12	+35	+12	99
<i>Orthoptists</i>	6	5	+5	5	5	-1	-0	-0	-0	-1	-0	5
<i>Physiotherapists</i>	141	181	+195	189	188	+40	-7	+1	+7	+47	+7	210
<i>Podiatrists & Chiropractors</i>	5	5	+6	7	7	+0	+1	+2	+2	+2	+2	7
<i>Speech & Language Therapists</i>	16	30	+29	27	27	+13	-3	-0	-3	+10	-3	31
Therapy Professions	262	349	380	375	374	+31	-6	-0	+26	+112	7.39%	416
Health Science/ Diagnostics	617	738	743	744	743	+6	-0	-1	+5	+126	0.73%	831
Social Care	2	2	2	2	2	-0	-0	-0	-0	-0	-4.10%	3
Social Workers	26	43	54	52	52	+11	-2	-0	+9	+26	21.37%	59
Psychologists	1	3	7	6	7	+4	-0	+0	+4	+6	119.61%	8
Pharmacy	137	191	203	206	205	+11	+3	-1	+14	+68	7.24%	233
H&SC, Other	19	31	41	21	20	+10	-21	-1	-11	+0	-36.54%	33
Health & Social Care Professionals	1,065	1,357	1,430	1,406	1,403	+73	-26	-3	+46	+339	3.43%	1,583
Management (VIII & above)	51	62	67	63	61	+6	-6	-2	-1	+10	-1.20%	63
Administrative/ Supervisory (V to VII)	237	384	444	429	426	+60	-18	-3	+42	+189	10.94%	448
Clerical (III & IV)	1,048	1,252	1,346	1,286	1,273	+93	-72	-12	+21	+226	1.68%	1,417
Management & Administrative	1,335	1,698	1,857	1,777	1,760	+159	-96	-17	+62	+426	3.67%	1,928
Support	836	919	939	937	933	+20	-6	-5	+14	+97	1.48%	1,025
Maintenance/ Technical	103	103	104	96	95	+1	-9	-0	-8	-8	-7.57%	98
General Support	939	1,022	1,043	1,033	1,028	+21	-15	-5	+6	+89	0.56%	1,123
Health Care Assistants	799	980	1,046	1,003	1,001	+65	-45	-2	+21	+202	2.10%	1,117
Care, other	30	86	99	96	96	+13	-3	+0	+10	+66	11.67%	107
Patient & Client Care	830	1,066	1,144	1,099	1,097	+78	-47	-2	+31	+267	2.88%	1,224



Employment Report by Hospital : SEP 2024

Galway University	WTE DEC 2019	WTE DEC 2022	WTE DEC 2023	WTE AUG 2024	WTE SEP 2024	WTE Change 2023	WTE Change 2024	WTE Change AUG 2024	WTE Change Dec 2022 to SEP 2024	WTE Change Dec 2019 to SEP 2024	% WTE Change Dec 2022 to SEP 2024	No. SEP 2024
Total Galway University	3,607	4,280	4,548	4,456	4,449	+268	-99	-7	+169	+842	3.96%	4,923
Consultants	229	254	271	281	281	+17	+10	+1	+28	+52	10.88%	307
Registrars	205	235	246	257	262	+11	+15	+4	+26	+56	11.15%	268
SHO/ Interns	222	278	290	302	305	+12	+14	+3	+26	+82	9.44%	311
Medical/ Dental, other	4	6	6	14	14	+1	+8	+1	+9	+10	157.35%	31
Medical & Dental	661	773	814	854	862	+41	+48	+8	+89	+201	11.49%	917
Nurse/ Midwife Manager	189	236	260	249	247	+23	-13	-2	+10	+57	4.29%	264
Nurse/ Midwife Specialist & AN/MP	86	122	137	142	140	+16	+3	-2	+19	+55	15.58%	154
Staff Nurse/ Staff Midwife	1,107	1,234	1,390	1,305	1,297	+157	-93	-8	+63	+190	5.11%	1,451
Public Health Nurse	1									-1	-100.00%	
<i>Nursing/ Midwifery awaiting registration</i>	8	85	14.88		23	-70	+8	+23	-62	+16	-72.78%	24
<i>Post-registration Nurse/ Midwife Student</i>	12	8	9	8	7	+1	-2	-1	-1	-5	-13.22%	7
<i>Pre-registration Nurse/ Midwife Intern</i>	1	4	0.97	40	30	-3	+29	-9	+26	+29	594.75%	58
Nursing/ Midwifery Student	21	98	25	48	61	-73	+36	+13	-37	+39	-37.97%	89
Nursing/ Midwifery other	10	11	16	15	13	+5	-3	-2	+2	+3	17.42%	16
Nursing & Midwifery	1,415	1,700	1,828	1,758	1,757	+128	-71	-0	+57	+342	3.35%	1,974
<i>Dietitians</i>	14	19	21.52	20	21	+2	-1	+1	+1	+6	7.59%	23
<i>Occupational Therapists</i>	22	31	34.14	34	34	+3	-0	-1	+2	+11	7.67%	38
<i>Orthoptists</i>	3	2	1.06	1	2	-1	+1	+1	+0	-1	0.50%	2
<i>Physiotherapists</i>	62	85	88.18	86	86	+3	-2	-0	+1	+23	1.01%	95
<i>Podiatrists & Chiropodists</i>	1	2	2	3	3	+0	+1	-0	+1	+2	50.25%	3
<i>Speech & Language Therapists</i>	7	12	13.1	13	12	+1	-1	-1	-0	+5	-2.60%	14
Therapy Professions	109	152	160	157	157	+8	-3	-0	+5	+48	3.56%	175
Health Science/ Diagnostics	295	340	347	349	348	+7	+1	-1	+8	+53	2.28%	390
Social Care	2	2	2	2	2	-0	-0	-0	-0	-0	-4.10%	3
Social Workers	19	28	35	34	34	+7	-1	-0	+6	+15	19.38%	37
Psychologists	1	2	6	5	6	+4	-0	+0	+4	+5	175.00%	7
Pharmacy	46	71	69	69	68	-2	-1	-1	-3	+22	-4.04%	77
H&SC, Other	10	17	22	12	9	+4	-12	-2	-8	-1	-45.52%	19
Health & Social Care Professionals	483	613	642	629	625	+28	-17	-4	+11	+142	1.87%	708
Management (VIII & above)	11	12	13	12	12	+1	-1	+0	-0	+1	-0.33%	12
Administrative/ Supervisory (V to VII)	96	133	153	146	147	+20	-7	+0	+13	+51	9.99%	156
Clerical (III & IV)	390	449	486	462	455	+38	-31	-7	+6	+65	1.34%	511
Management & Administrative	496	594	652	620	613	+58	-39	-7	+19	+117	3.25%	679
Support	236	253	248	251	250	-5	+2	-1	-3	+14	-1.28%	269
Maintenance/ Technical	36	36	34	33	34	-2	-0	+1	-2	-2	-5.55%	35
General Support	271	289	282	284	284	-7	+2	-1	-5	+12	-1.80%	304
Health Care Assistants	265	295	309	289	286	+14	-22	-2	-8	+21	-2.81%	318
Care, other	15	16	21	22	22	+6	+0	-1	+6	+7	39.31%	23
Patient & Client Care	280	310	330	311	308	+20	-22	-3	-2	+28	-0.69%	341



Letterkenny University	WTE DEC 2019	WTE DEC 2022	WTE DEC 2023	WTE AUG 2024	WTE SEP 2024	WTE Change 2023	WTE Change 2024	WTE Change AUG 2024	WTE Change Dec 2022 to SEP 2024	WTE Change Dec 2019 to SEP 2024	% WTE Change Dec 2022 to SEP 2024	No. SEP 2024
Total Letterkenny University	1,607	2,089	2,204	2,205	2,198	+116	-6	-6	+110	+591	5.26%	2,449
Consultants	58	68	73	80	80	+5	+7	+0	+12	+22	17.47%	83
Registrars	63	63	67	79	78	+3	+12	-1	+15	+15	23.43%	79
SHO/ Interns	87	106	118	111	115	+12	-4	+4	+8	+28	7.87%	117
Medical/ Dental, other		0	1	1	1	+0	+0	+0	+0	+1	93.18%	1
Medical & Dental	208	238	259	270	274	+20	+15	+3	+36	+66	14.91%	280
Nurse/ Midwife Manager	100	132	153	141	140	+21	-12	-1	+8	+40	6.36%	153
Nurse/ Midwife Specialist & AN/MP	38	52	62	69	68	+9	+7	-0	+16	+30	30.66%	73
Staff Nurse/ Staff Midwife	448	614	625	623	611	+11	-14	-12	-3	+164	-0.49%	709
<i>Nursing/ Midwifery awaiting registration</i>	7	6			25	-6	+25	+25	+19	+18	297.94%	26
<i>Pre-registration Nurse/ Midwife Intern</i>		1		17	4	-1	+4	-13	+3	+4	305.10%	8
Nursing/ Midwifery Student	7	7		17	29	-7	+29	+12	+22	+22	298.90%	34
Nursing/ Midwifery other	3	4	4	8	8	+0	+4	+0	+4	+5	114.32%	9
Nursing & Midwifery	597	810	843	858	857	+34	+14	-1	+48	+260	5.89%	978
<i>Dietitians</i>	7	8	7.9	10	10	+0	+3	+0	+3	+4	38.54%	12
<i>Occupational Therapists</i>	10	14	17.34	17	18	+4	+1	+1	+4	+8	31.47%	19
<i>Physiotherapists</i>	19	24	24.12	25	24	-0	+0	-0	-0	+5	-0.82%	26
<i>Podiatrists & Chiropodists</i>	1	1	0.92	1	1	-0	+0	+0	+0	+0	1.01%	1
<i>Speech & Language Therapists</i>	2	4	2.45	2	3	-1	+0	+0	-1	+1	-29.97%	3
Therapy Professions	38	50	53	55	56	+3	+3	+1	+6	+18	11.69%	61
Health Science/ Diagnostics	91	110	111	113	113	+2	+2	-1	+3	+22	2.91%	124
Social Workers	1	3	3	3	3	+0	-0	+0	-0	+2	-2.03%	3
Pharmacy	21	33	45	45	45	+13	-1	-0	+12	+24	37.30%	49
H&SC, Other	2	3	5		0	+2	-5	+0	-2	-1	-85.66%	1
Health & Social Care Professionals	153	198	218	216	217	+19	-0	+1	+19	+65	9.49%	238
Management (VIII & above)	6	7	8	8	8	+1	-0	+0	+1	+2	8.54%	8
Administrative/ Supervisory (V to VII)	25	54	67	63	61	+13	-6	-2	+7	+35	13.16%	63
Clerical (III & IV)	192	245	257	252	250	+13	-7	-2	+5	+58	2.16%	277
Management & Administrative	223	305	332	323	318	+27	-14	-5	+13	+95	4.24%	348
Support	233	260	258	257	251	-2	-7	-6	-9	+18	-3.48%	280
Maintenance/ Technical	14	15	16	13	13	+1	-3	-0	-2	-1	-14.60%	13
General Support	246	275	273	270	264	-1	-10	-6	-11	+17	-4.10%	293
Health Care Assistants	178	239	256	245	246	+17	-10	+1	+7	+68	2.91%	285
Care, other	2	23	24	22	23	+0	-1	+1	-1	+20	-3.46%	27
Patient & Client Care	180	262	280	267	269	+17	-11	+1	+6	+88	2.34%	312

Mayo University	WTE DEC 2019	WTE DEC 2022	WTE DEC 2023	WTE AUG 2024	WTE SEP 2024	WTE Change 2023	WTE Change 2024	WTE Change AUG 2024	WTE Change Dec 2022 to SEP 2024	WTE Change Dec 2019 to SEP 2024	% WTE Change Dec 2022 to SEP 2024	No. SEP 2024
Total Mayo University	1,150	1,435	1,516	1,481	1,486	+82	-30	+5	+52	+337	3.60%	1,657
Consultants	49	54	59	67	64	+5	+5	-3	+10	+15	17.83%	68
Registrars	56	67	66	59	65	-0	-1	+6	-2	+9	-2.46%	68
SHO/ Interns	74	98	103	91	100	+5	-4	+9	+2	+25	1.95%	101
Medical/ Dental, other	0	1		0	0	-1	+0	-0	-1	-0	-98.00%	1
Medical & Dental	179	220	229	217	229	+9	+0	+12	+9	+50	4.09%	238
Nurse/ Midwife Manager	74	96	110	107	106	+14	-3	-1	+11	+32	11.31%	111
Nurse/ Midwife Specialist & AN/MP	22	31	42	43	43	+10	+1	-0	+12	+21	37.24%	46
Staff Nurse/ Staff Midwife	391	458	460	460	460	+3	-0	+0	+2	+69	0.48%	529
<i>Nursing/ Midwifery awaiting registration</i>		8	14.53			+7	-15		-8		-100.00%	
<i>Post-registration Nurse/ Midwife Student</i>			2	3	2	+2	+0	-1	+2	+2	-100.00%	3
<i>Pre-registration Nurse/ Midwife Intern</i>	0	3	2.3	16	13	-1	+11	-3	+10	+13	354.55%	26



Mayo University	WTE DEC 2019	WTE DEC 2022	WTE DEC 2023	WTE AUG 2024	WTE SEP 2024	WTE Change 2023	WTE Change 2024	WTE Change AUG 2024	WTE Change Dec 2022 to SEP 2024	WTE Change Dec 2019 to SEP 2024	% WTE Change Dec 2022 to SEP 2024	No. SEP 2024
Total Mayo University	1,150	1,435	1,516	1,481	1,486	+82	-30	+5	+52	+337	3.60%	1,657
Nursing/ Midwifery Student	0	10	19	19	15	+8	-4	-3	+5	+15	44.89%	29
Nursing/ Midwifery other	2	5	7	6	6	+2	-1	-1	+1	+4	20.84%	7
Nursing & Midwifery	489	600	637	634	630	+37	-7	-4	+30	+141	5.05%	722
<i>Dietitians</i>	5	8	9.17	9	9	+1	-0	-0	+1	+4	13.89%	10
<i>Occupational Therapists</i>	6	9	10.5	12	13	+2	+2	+0	+4	+7	40.47%	13
<i>Physiotherapists</i>	23	26	26.75	26	25	+1	-2	-1	-1	+1	-3.60%	28
<i>Podiatrists & Chiropodists</i>	1									-1	-100.00%	
<i>Speech & Language Therapists</i>	2	2	3.4	3	4	+1	+0	+0	+1	+2	59.09%	4
Therapy Professions	37	45	50	51	50	+5	+0	-1	+5	+13	11.45%	55
Health Science/ Diagnostics	75	101	95	94	94	-6	-1	-0	-7	+19	-7.12%	107
Social Workers	3	4	7	7	7	+3	+0	-0	+3	+4	93.06%	9
Pharmacy	18	26	28	28	28	+1	+0	-0	+2	+9	6.08%	33
H&SC, Other	2	2	2	1	1	-0	-1	+0	-1	-1	-42.57%	2
Health & Social Care Professionals	136	178	181	181	180	+3	-1	-2	+2	+44	1.14%	206
Management (VIII & above)	2	6	5	5	5	-1	+0	+0	-1	+3	-16.39%	5
Administrative/ Supervisory (V to VII)	21	41	52	50	49	+11	-3	-1	+8	+29	19.79%	52
Clerical (III & IV)	131	170	170	156	156	+0	-13	+1	-13	+25	-7.78%	178
Management & Administrative	154	216	227	211	210	+10	-16	-1	-6	+57	-2.80%	235
Support	38	41	47	46	48	+6	+1	+2	+7	+10	17.19%	51
Maintenance/ Technical	19	19	19	15	14	+1	-6	-1	-5	-5	-25.92%	15
General Support	57	59	66	61	62	+7	-5	+0	+2	+5	3.73%	66
Health Care Assistants	134	151	164	161	161	+13	-3	-1	+10	+26	6.57%	174
Care, other	1	11	14	15	15	+3	+2	-0	+4	+14	39.16%	16
Patient & Client Care	135	162	177	177	176	+15	-1	-1	+14	+41	8.77%	190

Portiuncula University	WTE DEC 2019	WTE DEC 2022	WTE DEC 2023	WTE AUG 2024	WTE SEP 2024	WTE Change 2023	WTE Change 2024	WTE Change AUG 2024	WTE Change Dec 2022 to SEP 2024	WTE Change Dec 2019 to SEP 2024	% WTE Change Dec 2022 to SEP 2024	No. SEP 2024
Total Portiuncula University	790	982	1,076	1,070	1,064	+95	-12	-5	+83	+275	8.44%	1,184
Consultants	38	37	47	46	47	+10	+0	+0	+10	+9	25.85%	51
Registrars	42	53	56	55	54	+3	-2	-1	+1	+12	2.57%	56
SHO/ Interns	58	70	76	78	80	+6	+4	+2	+10	+23	14.28%	81
Medical & Dental	137	160	179	180	181	+19	+2	+1	+21	+44	13.12%	188
Nurse/ Midwife Manager	66	80	93	95	92	+12	-1	-3	+11	+26	14.19%	103
Nurse/ Midwife Specialist & ANMP	19	31	35	33	33	+4	-2	+0	+2	+14	6.99%	37
Staff Nurse/ Staff Midwife	236	288	311	314	307	+23	-4	-7	+19	+71	6.76%	356
<i>Nursing/ Midwifery awaiting registration</i>		2	2		3	+0	+1	+3	+1	+3	47.00%	3
<i>Post-registration Nurse/ Midwife Student</i>		1		1	2	-1	+2	+1	+1	+2	100.00%	2
Nursing/ Midwifery Student		3	2	1	5	-1	+3	+4	+2	+5	64.67%	5
Nursing/ Midwifery other	1	2	2	2	2	-1	-0	+0	-1	+1	-24.79%	3
Nursing & Midwifery	322	404	443	445	439	+38	-4	-6	+34	+117	8.49%	504
<i>Dietitians</i>	4	4	4.75	5	5	+1	+0	+0	+1	+1	20.60%	5
<i>Occupational Therapists</i>	2	3	3.98	5	5	+1	+1	+0	+2	+3	64.55%	5
<i>Physiotherapists</i>	8	11	13.62	13	13	+2	-1	+0	+2	+5	14.54%	15
<i>Speech & Language Therapists</i>	1	5	4.82	4	4	+0	-1	-0	-1	+3	-20.84%	5
Therapy Professions	16	23	27	26	26	+4	-1	+0	+3	+11	14.78%	30
Health Science/ Diagnostics	48	57	63	62	61	+6	-2	-1	+4	+13	7.05%	68
Social Workers	4	5	5	5	5	-1	+0	-0	-1	+1	-9.96%	5
Pharmacy	12	16	14	16	16	-1	+2	+0	+1	+5	3.75%	19
H&SC, Other	2	3	4	1	1	+1	-3	+0	-2	-1	-72.24%	1



Portiuncula University	WTE DEC 2019	WTE DEC 2022	WTE DEC 2023	WTE AUG 2024	WTE SEP 2024	WTE Change 2023	WTE Change 2024	WTE Change AUG 2024	WTE Change Dec 2022 to SEP 2024	WTE Change Dec 2019 to SEP 2024	% WTE Change Dec 2022 to SEP 2024	No. SEP 2024
Total Portiuncula University	790	982	1,076	1,070	1,064	+95	-12	-5	+83	+275	8.44%	1,184
Health & Social Care Professionals	81	104	113	109	109	+9	-4	-0	+5	+28	5.23%	123
Management (VIII & above)	6	6	6	6	6	+0	+0	+0	+0	+0	0.00%	6
Administrative/ Supervisory (V to VII)	21	34	43	47	46	+9	+3	-0	+12	+25	36.37%	48
Clerical (III & IV)	84	104	104	98	98	+1	-6	+0	-5	+14	-5.03%	107
Management & Administrative	111	144	153	151	151	+10	-3	-0	+7	+39	4.99%	161
Support	66	77	82	80	79	+6	-3	-0	+2	+13	3.25%	89
Maintenance/ Technical	11	11	12	12	12	+1	+0	-0	+1	+1	9.09%	12
General Support	77	88	94	92	91	+7	-3	-1	+3	+14	3.98%	101
Health Care Assistants	59	82	94	92	93	+12	-1	+1	+11	+34	12.96%	106
Care, other	2		1	1	1	+1	+0	+0	+1	-1	-100.00%	1
Patient & Client Care	61	82	95	93	94	+12	-1	+1	+11	+33	13.95%	107

Roscommon University	WTE DEC 2019	WTE DEC 2022	WTE DEC 2023	WTE AUG 2024	WTE SEP 2024	WTE Change 2023	WTE Change 2024	WTE Change AUG 2024	WTE Change Dec 2022 to SEP 2024	WTE Change Dec 2019 to SEP 2024	% WTE Change Dec 2022 to SEP 2024	No. SEP 2024
Total Roscommon University	333	438	476	457	455	+37	-21	-3	+16	+121	3.66%	508
Consultants	10	10	11	9	10	+1	-1	+1	-0	-0	-1.28%	10
Registrars	7	10	10	10	10	+0	+0	+0	+0	+3	4.90%	11
SHO/ Interns	12	12	15	12	12	+3	-3	+0	+0	+0	1.93%	13
Medical & Dental	29	32	36	30	32	+5	-4	+2	+1	+3	1.80%	34
Nurse/ Midwife Manager	23	32	38	35	34	+6	-4	-2	+1	+10	4.42%	37
Nurse/ Midwife Specialist & AN/MP	14	24	27	26	25	+4	-2	-1	+1	+11	5.09%	26
Staff Nurse/ Staff Midwife	88	132	134	133	131	+3	-3	-2	-0	+43	-0.20%	151
<i>Pre-registration Nurse/ Midwife Intern</i>		1		2	2	-1	+2	+0	+1	+2	183.02%	3
Nursing/ Midwifery Student		1		2	2	-1	+2	+0	+1	+2	183.02%	3
Nursing/ Midwifery other	1	1	1	1	1	-0	+0	+0	-0	+0	-1.12%	1
Nursing & Midwifery	126	189	200	197	192	+11	-8	-4	+3	+66	1.76%	218
<i>Dietitians</i>	1	2	1.8	1	1	-0	-1	+0	-1	+0	-44.75%	1
<i>Occupational Therapists</i>	2	3	3.35	4	3	+0	-0	-1	+0	+1	16.43%	4
<i>Physiotherapists</i>	3	5	4.63	4	4	+0	-1	+0	-1	+1	-12.67%	5
<i>Podiatrists & Chiropodists</i>	1		1	1	1	+1	+0	+0	+1	+0	-100.00%	1
<i>Speech & Language Therapists</i>	2	2	1	1	1	-1	+0	+0	-1	-1	-46.24%	1
Therapy Professions	9	11	12	11	10	+1	-2	-0	-1	+1	-6.98%	12
Health Science/ Diagnostics	16	20	19	19	19	-2	+0	-0	-2	+3	-8.44%	22
Social Workers		1	2	2	2	+2	-0	-0	+2	+2	303.70%	3
Pharmacy	1	3	4	3	3	+1	-1	+0	-0	+2	-2.13%	4
Health & Social Care Professionals	26	35	36	35	34	+1	-2	-1	-1	+8	-2.59%	41
Management (VIII & above)	1	1	3	1	1	+2	-2	+0	+0	+0	0.00%	1
Administrative/ Supervisory (V to VII)	11	16	18	18	18	+2	-0	-0	+2	+8	14.86%	19
Clerical (III & IV)	48	54	60	59	59	+6	-1	-0	+5	+11	8.67%	66
Management & Administrative	59	71	82	79	78	+11	-3	-0	+7	+19	9.93%	86
Support	62	67	68	65	66	+1	-1	+1	-1	+4	-1.15%	73
Maintenance/ Technical	9	9	10	10	10	+1	+0	+0	+1	+1	17.51%	10
General Support	71	75	78	75	76	+2	-1	+1	+1	+5	0.95%	83
Health Care Assistants	22	36	42	41	40	+7	-2	-1	+4	+18	11.98%	44
Care, other	1	1	2	2	2	+1	+0	+0	+1	+1	194.12%	2
Patient & Client Care	22	36	44	42	42	+8	-2	-1	+5	+19	14.54%	46



Saolta HG HQ	WTE DEC 2019	WTE DEC 2022	WTE DEC 2023	WTE AUG 2024	WTE SEP 2024	WTE Change 2023	WTE Change 2024	WTE Change AUG 2024	WTE Change Dec 2022 to SEP 2024	WTE Change Dec 2019 to SEP 2024	% WTE Change Dec 2022 to SEP 2024	No. SEP 2024
Total Saolta HG HQ	79	110	119	111	109	+8	-9	-1	-1	+31	-0.87%	114
Consultants	1	1	1	1	1	+0	+0	+0	+0	+0	0.00%	1
Medical & Dental	1	1	1	1	1	+0	+0	+0	+0	+0	0.00%	1
Nurse/ Midwife Manager	8	13	19	19	19	+6	-0	+0	+6	+11	41.85%	20
Staff Nurse/ Staff Midwife	1	1	1	2	2	+0	+1	+0	+1	+1	100.00%	2
Nursing/ Midwifery other	8									-8	-100.00%	
Nursing & Midwifery	16	14	20	21	21	+6	+1	+0	+7	+5	45.90%	22
Occupational Therapists	1	1				-1			-1	-1	-100.00%	
Therapy Professions	1	1				-1			-1	-1	-100.00%	
Health Science/ Diagnostics		1	1	1	1	+0	+0	-0	+0	+1	0.00%	1
Health & Social Care Professionals	1	2	1	1	1	-1	+0	-0	-1	+0	-50.00%	1
Management (VIII & above)	17	21	25	23	22	+4	-3	-1	+1	+5	5.39%	23
Administrative/ Supervisory (V to VII)	36	57	57	51	51	+0	-6	-0	-6	+15	-10.57%	53
Clerical (III & IV)	7	15	15	14	14	-0	-1	+0	-2	+6	-10.83%	14
Management & Administrative	61	93	97	88	87	+4	-10	-1	-7	+26	-7.05%	90

Sligo University	WTE DEC 2019	WTE DEC 2022	WTE DEC 2023	WTE AUG 2024	WTE SEP 2024	WTE Change 2023	WTE Change 2024	WTE Change AUG 2024	WTE Change Dec 2022 to SEP 2024	WTE Change Dec 2019 to SEP 2024	% WTE Change Dec 2022 to SEP 2024	No. SEP 2024
Total Sligo University	1,688	1,993	2,151	2,141	2,147	+158	-5	+5	+153	+459	7.69%	2,392
Consultants	77	87	94	100	100	+7	+6	+0	+13	+23	15.10%	106
Registrars	72	79	88	87	89	+8	+1	+2	+9	+16	11.61%	93
SHO/ Interns	82	103	120	122	128	+17	+9	+6	+25	+46	24.38%	130
Medical/ Dental, other	6	5	6	4	5	+1	-1	+1	-0	-1	-2.82%	7
Medical & Dental	237	274	307	312	321	+33	+15	+9	+47	+84	17.26%	336
Nurse/ Midwife Manager	106	124	140	141	142	+17	+2	+1	+18	+36	14.73%	152
Nurse/ Midwife Specialist & AN/MP	40	55	64	63	61	+9	-2	-1	+7	+22	12.21%	67
Staff Nurse/ Staff Midwife	494	577	599	593	588	+22	-10	-5	+11	+95	1.96%	685
Nursing/ Midwifery awaiting registration	21		10		8	+10	-2	+8	+8	-13	-100.00%	12
Pre-registration Nurse/ Midwife Intern		2		20	12	-2	+12	-8	+10	+12	641.03%	28
Nursing/ Midwifery Student	21	2	10	20	20	+8	+10	-0	+18	-1	1,155.77%	40
Nursing/ Midwifery other	8	11	10	12	12	-1	+2	+0	+1	+4	9.70%	13
Nursing & Midwifery	669	768	823	829	823	+55	+0	-6	+55	+155	7.20%	957
Dietitians	7	9	10.9	11	11	+2	+0	+0	+2	+4	23.81%	13
Occupational Therapists	14	18	19.94	19	19	+2	-1	+0	+1	+5	3.97%	20
Orthoptists	3	3	3.9	4	3	+1	-1	-1	-0	-1	-11.15%	3
Physiotherapists	25	30	37.42	36	37	+7	-1	+1	+6	+12	20.25%	41
Podiatrists & Chiropodists	1	2	2	2	2	+0	+0	+0	+0	+1	6.38%	2
Speech & Language Therapists	2	5	4.39	4	4	-0	-1	+0	-1	+2	-21.91%	4
Therapy Professions	52	67	79	75	75	+12	-4	+0	+8	+23	11.56%	83
Health Science/ Diagnostics	93	109	108	105	108	-1	+0	+3	-1	+16	-0.62%	119
Social Workers		2	2	1	1	-0	-0	+0	-1	+1	-36.87%	2
Psychologists		1	1	1	1	+0	+0	+0	+0	+1	1.01%	1
Pharmacy	38	42	42	45	45	+0	+2	-0	+2	+6	5.68%	51
H&SC, Other	3	6	8	7	8	+2	-0	+1	+2	+5	33.10%	10
Health & Social Care Professionals	186	227	239	234	238	+13	-2	+4	+11	+52	4.71%	266
Management (VIII & above)	8	9	8	8	8	-1	-0	-0	-1	-0	-15.96%	8
Administrative/ Supervisory (V to VII)	27	49	53	53	54	+4	+1	+1	+5	+27	9.89%	57



Sligo University	WTE DEC 2019	WTE DEC 2022	WTE DEC 2023	WTE AUG 2024	WTE SEP 2024	WTE Change 2023	WTE Change 2024	WTE Change AUG 2024	WTE Change Dec 2022 to SEP 2024	WTE Change Dec 2019 to SEP 2024	% WTE Change Dec 2022 to SEP 2024	No. SEP 2024
Total Sligo University	1,688	1,993	2,151	2,141	2,147	+158	-5	+5	+153	+459	7.69%	2,392
Clerical (III & IV)	195	217	253	245	242	+37	-11	-3	+25	+47	11.58%	264
Management & Administrative	230	275	314	307	304	+39	-11	-3	+29	+73	10.38%	329
Support	201	222	236	238	239	+14	+3	+1	+17	+38	7.72%	263
Maintenance/ Technical	15	14	13	13	13	-1	+0	+0	-1	-2	-9.15%	13
General Support	215	236	249	251	252	+13	+3	+1	+16	+36	6.70%	276
Health Care Assistants	141	178	181	174	175	+3	-6	+0	-3	+34	-1.64%	190
Care, other	10	36	38	34	34	+2	-4	+0	-1	+24	-3.90%	38
Patient & Client Care	151	213	219	208	209	+6	-10	+1	-4	+58	-2.02%	228



Employment Report by Grade Group: SEP 2024

Employment by Grade Group SEP 2024	WTE DEC 2019	WTE DEC 2022	WTE DEC 2023	WTE AUG 2024	WTE SEP 2024	WTE Change 2023	WTE Change 2024	WTE Change AUG 2024	WTE Change Dec 2022 to SEP 2024	WTE Change Dec 2019 to SEP 2024	% WTE Change Dec 2022 to SEP 2024	No. SEP 2024
Overall	9,253	11,327	12,091	11,921	11,909	+765	-183	-12	+582	+2,656	5.14%	13,227
Consultant Anaesthesia	67	68	77	80	80	+9	+2	-1	+11	+13	16.53%	84
Consultant Dentistry	4	4	4	5	4	+0	-0	-0	+0	+0	5.44%	6
Consultant Emergency Medicine	20	23	25	26	27	+3	+2	+1	+4	+7	19.21%	29
Consultant Intensive Care Medicine	1	1	1	1	1	+0	+0	+0	+0	+0	0.00%	1
Consultant Medicine	129	157	166	179	180	+9	+14	+1	+23	+50	14.79%	194
Consultant Obstetrics & Gynaecology	27	28	31	32	32	+3	+0	-0	+4	+5	13.24%	36
Consultant Paediatrics	29	36	37	39	38	+1	+1	-1	+3	+9	6.97%	43
Consultant Pathology	49	50	55	58	60	+4	+5	+2	+10	+11	18.92%	63
Consultant Psychiatry	1	1	2	2	2	+1	+0	+0	+1	+1	100.00%	2
Consultant Radiology	44	45	54	53	52	+9	-1	-1	+8	+8	17.35%	54
Consultant Surgery	92	99	104	108	107	+5	+3	-1	+8	+15	8.42%	114
Consultants	463	511	556	583	583	+45	+27	+0	+72	+121	14.04%	626
Registrar	294	328	349	357	362	+21	+13	+5	+34	+69	10.37%	375
Senior Registrar	14	20	23	23	24	+3	+2	+1	+5	+11	24.30%	26
Specialist Registrar	137	159	161	166	170	+2	+10	+4	+12	+33	7.33%	174
Registrars	445	507	533	547	557	+26	+25	+10	+50	+113	9.96%	575
Interns	130	132	151	155	158	+19	+7	+3	+27	+28	20.19%	159
Senior House Officer	405	537	572	561	582	+35	+10	+21	+45	+177	8.47%	594
SHO/ Interns	535	668	723	716	740	+55	+17	+24	+72	+205	10.78%	753
Dentists	8	7	7	4	5	+0	-2	+1	-2	-2	-22.67%	6
Other Medical	3	5	5	14	14	+0	+9	+1	+10	+12	193.12%	34
Medical/ Dental, other	10	12	12	18	20	+0	+7	+1	+8	+10	66.83%	40
Medical & Dental	1,452	1,698		1,865	1,900	+126	+77	+36	+202	+448	11.91%	1,994
Clinical Nurse/ Midwife Manager 1	103	124	133	134	133	+9	-0	-1	+9	+30	7.24%	144
Clinical Nurse/ Midwife Manager 2	333	439	503	485	479	+65	-24	-6	+40	+146	9.20%	520
Clinical Nurse/ Midwife Manager 3	60	63	71	68	67	+8	-4	-1	+4	+8	6.69%	70
Director Nursing/Midwifery, Assistant	55	68	83	78	79	+15	-4	+1	+11	+24	15.54%	85
Director of Nursing/Midwifery	16	19	21	21	21	+2	-0	+0	+2	+5	9.38%	21
Nurse/ Midwife Manager	567	713	812	787	779	+99	-33	-8	+66	+212	9.25%	840
Advanced Nurse/ Midwife Practitioner	57	86	95	103	108	+9	+13	+4	+22	+50	25.35%	113
Adv. Nurse/ Midwife, Candidate	17	42	67	65	61	+24	-6	-4	+18	+44	43.09%	63
Clinical Nurse/ Midwife Spec., Candidate			1	4	4	+1	+3	-0	+4	+4	-100.00%	4
Clinical Nurse/ Midwife Specialist	144	186	204	203	199	+18	-5	-4	+13	+56	7.01%	223
Nurse/ Midwife Specialist & AN/MP	218	315	367	375	371	+53	+4	-4	+57	+153	18.00%	403
Staff Midwives	236	289	300	295	290	+11	-9	-5	+1	+55	0.40%	353
Staff Nurse [Intellectual Disability]			2	2	2	+2	+0	+0	+2	+2	-100.00%	2
Staff Nurses [General/ Children's]	2,528	3,014	3,218	3,133	3,104	+204	-114	-29	+91	+576	3.01%	3,528
Staff Nurse/ Staff Midwife	2,764	3,303	3,520	3,430	3,397	+217	-123	-33	+94	+632	2.84%	3,883
Public Health Nurse	1									-1	-100.00%	
Public Health Nurse	1									-1	-100.00%	
Nursing/ Midwifery awaiting registration	36	101	41		59	-60	+18	+59	-42	+23	-41.40%	65
Post-registration Nurse/ Midwife Student	12	9	11	12	11	+2	+0	-1	+2	-1	23.71%	12
Pre-registration Nurse/ Midwife Intern	2	10	3	93	60	-7	+57	-33	+50	+59	486.42%	123
Nursing/ Midwifery Student	50	120	56	105	131	-65	+75	+25	+10	+81	8.62%	200
Nursing Education/Clinical	33	34	39	44	42	+5	+3	-2	+8	+9	23.11%	49
Nursing/ Midwifery other	33	34	39	44	42	+5	+3	-2	+8	+9	23.11%	49
Nursing & Midwifery	3,633	4,485		4,741	4,720	+309	-74	-22	+235	+1,086	5.23%	5,375
Dietitians	37	49	56	56	57	+7	+1	+1	+8	+19	15.40%	64
Occupational Therapists	57	79	89	91	91	+10	+2	+1	+12	+35	15.77%	99
Orthoptists	6	5	5	5	5	-0	-0	-0	-0	-1	-6.63%	5
Physiotherapists	141	181	195	189	188	+14	-7	-1	+7	+47	3.86%	210
Podiatrists & Chiropodists	5	5	6	7	7	+1	+1	+0	+2	+2	43.83%	7
Speech & Language Therapists	16	30	29	27	27	-0	-3	-0	-3	+10	-10.20%	31
Therapy Professions	262	349	380	375	374	+31	-6	-0	+26	+112	7.39%	416



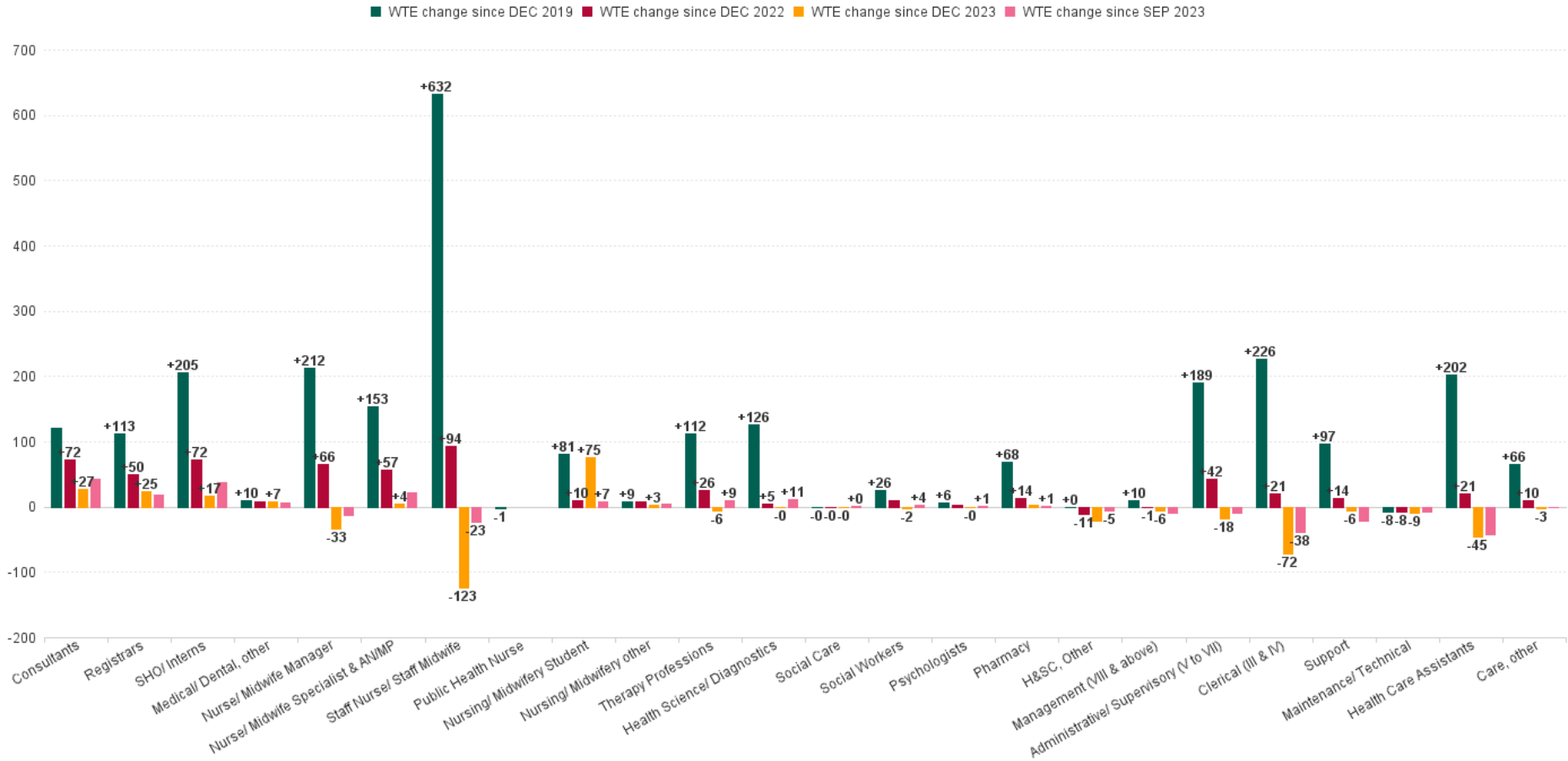
Employment by Grade Group SEP 2024	WTE DEC 2019	WTE DEC 2022	WTE DEC 2023	WTE AUG 2024	WTE SEP 2024	WTE Change 2023	WTE Change 2024	WTE Change AUG 2024	WTE Change Dec 2022 to SEP 2024	WTE Change Dec 2019 to SEP 2024	% WTE Change Dec 2022 to SEP 2024	No. SEP 2024
Overall	9,253	11,327	12,091	11,921	11,909	+765	-183	-12	+582	+2,656	5.14%	13,227
Audiology	6	7	8	8	8	+1	+0	+0	+1	+2	13.29%	8
Biochemists	2	1	3	3	3	+2	-0	+0	+2	+1	193.00%	3
Cardiac Physiologists	36	37	42	44	44	+5	+2	-0	+7	+7	19.35%	49
Clinical Engineering	19	20	21	21	21	+1	-0	+0	+1	+2	2.91%	21
Dosimetrists	3	5	6	7	6	+1	-0	-1	+1	+3	15.00%	6
E.C.G. Technicians	2	1	1	1	0	-0	-0	-0	-1	-1	-57.14%	2
Gastrointestinal Physiologists			1	1	1	+0	+0	+0	+0	+1	1.01%	1
Medical Science	309	358	344	340	342	-13	-3	+2	-16	+33	-4.36%	374
Neuro-Physiologists	3	3	3	3	3	+0	+0	-0	+0	+0	0.33%	4
Perfusionists	4	3	3	2	3	+0	-0	+1	-0	-1	-2.33%	4
Phlebotomists	21	29	33	35	34	+4	+2	-1	+5	+14	18.13%	40
Physicists	16	23	26	26	26	+4	-1	-0	+3	+10	11.90%	27
Radiation Therapists	21	35	35	35	35	+0	-1	+0	-1	+14	-1.87%	39
Radiographers	165	202	203	206	205	+1	+2	-1	+3	+40	1.59%	239
Respiratory Physiologists	8	10	10	10	10	+0	-0	+0	+0	+2	2.28%	10
Vascular Physiologists	4	4	4	4	4	-0	-0	-0	-0	-0	-10.03%	4
Health Science/ Diagnostics	617	738	743	744	743	+6	-0	-1	+5	+126	0.73%	831
Social Care	2	2	2	2	2	-0	-0	-0	-0	-0	-4.10%	3
Social Care	2	2	2	2	2	-0	-0	-0	-0	-0	-4.10%	3
Social Workers	26	43	54	52	52	+11	-2	-0	+9	+26	21.37%	59
Social Workers	26	43	54	52	52	+11	-2	-0	+9	+26	21.37%	59
Psychologists	1	3	7	6	7	+4	-0	+0	+4	+6	119.61%	8
Psychologists	1	3	7	6	7	+4	-0	+0	+4	+6	119.61%	8
Pharmacists	75	96	107	107	108	+11	+2	+1	+12	+34	12.64%	127
Pharmacy Technicians	62	95	96	99	97	+1	+1	-2	+2	+35	1.79%	106
Pharmacy	137	191	203	206	205	+11	+3	-1	+14	+68	7.24%	233
Counsellor Therapists	1	1	1	1	1	-0	+0	+0	-0	-0	-1.56%	1
Dental Hygienists	1	1	1	1	1	+0	+0	+0	+0	+0	0.00%	1
HSCP Trainees/Students	14	21	25	9	6	+4	-19	-3	-15	-8	-71.82%	16
Other Health & Social Care	1	5	9	8	9	+4	+0	+1	+4	+8	85.14%	10
Play Therapists/ Specialists	3	4	5	2	3	+1	-2	+1	-1	+0	-20.86%	5
H&S, Other	19	31	41	21	20	+10	-21	-1	-11	+0	-36.54%	33
Health & Social Care Professionals	1,065	1,357		1,406	1,403	+73	-26	-3	+46	+339	3.43%	1,583
CEO/Chief Officer	2	3	3	2	1	+0	-2	-1	-2	-1	-66.67%	1
General Managers	8	12	18	16	16	+6	-2	+0	+4	+8	35.19%	16
National Director, Assistant	3	4	3	2	2	-1	-1	+0	-2	-1	-50.00%	2
Other Executives	3	3	4	4	4	+1	+0	+0	+1	+1	33.78%	4
VIII	35	40	39	39	38	-0	-2	-1	-2	+3	-4.80%	40
Management (VIII & above)	51	62	67	63	61	+6	-6	-2	-1	+10	-1.20%	63
Middle Management (V-VII)	232	377	440	429	426	+63	-14	-3	+49	+194	12.90%	448
Other Administrative	5	7	4			-3	-4		-7	-5	-100.00%	
Administrative/ Supervisory (V to VII)	237	384	444	429	426	+60	-18	-3	+42	+189	10.94%	448
General Administrative (III & IV)	1,048	1,252	1,346	1,286	1,273	+93	-72	-12	+21	+226	1.68%	1,417
Clerical (III & IV)	1,048	1,252	1,346	1,286	1,273	+93	-72	-12	+21	+226	1.68%	1,417
Management & Administrative	1,335	1,698		1,777	1,760	+159	-96	-17	+62	+426	3.67%	1,928
Catering	64	62	243	248	249	+181	+6	+1	+187	+185	303.50%	277
Household Services	381	451	273	235	238	-178	-35	+3	-213	-142	-47.17%	270
Other Labs & Associated	56	108	121	131	129	+13	+8	-2	+21	+73	19.40%	137
Other Support	145	145	147	149	147	+3	-0	-2	+3	+2	1.74%	162
Portering	190	154	154	174	169	+0	+15	-4	+16	-20	10.25%	179
Support	836	919	939	937	933	+20	-6	-5	+14	+97	1.48%	1,025
Maintenance	102	102	103	95	94	+1	-9	-0	-8	-8	-7.55%	97
Technical Services	1	1	1	1	1	+0	-0	-0	-0	-0	-10.00%	1
Maintenance/ Technical	103	103	104	96	95	+1	-9	-0	-8	-8	-7.57%	98
General Support	939	1,022		1,033	1,028	+21	-15	-5	+6	+89	0.56%	1,123
Attendant/ Aide	166	196	205	200	201	+9	-5	+1	+4	+35	2.15%	213
Health Care Assistant/ Care Assistant	602	727	771	738	736	+44	-36	-2	+9	+134	1.23%	831



Employment by Grade Group SEP 2024	WTE DEC 2019	WTE DEC 2022	WTE DEC 2023	WTE AUG 2024	WTE SEP 2024	WTE Change 2023	WTE Change 2024	WTE Change AUG 2024	WTE Change Dec 2022 to SEP 2024	WTE Change Dec 2019 to SEP 2024	% WTE Change Dec 2022 to SEP 2024	No. SEP 2024
Overall	9,253	11,327	12,091	11,921	11,909	+765	-183	-12	+582	+2,656	5.14%	13,227
Health & Social Care Assistants	31	57	69	65	64	+12	-5	-1	+7	+33	13.16%	73
Health Care Assistants	799	980	1,046	1,003	1,001	+65	-45	-2	+21	+202	2.10%	1,117
Other Care Grades	22	80	93	90	90	+13	-3	+0	+10	+69	12.93%	99
Pastoral Care	9	6	6	6	6	-0	-0	-0	-0	-3	-4.89%	8
Care, other	30	86	99	96	96	+13	-3	+0	+10	+66	11.67%	107
Patient & Client Care	830	1,066		1,099	1,097	+78	-47	-2	+31	+267	2.88%	1,224



WTE Change by Staff Group



Employment Report by WTE, Headcount, Gender, Full-Time / Part-Time etc. SEP 2024

Demographic Grade Group SEP 2024	WTE SEP 2024	No. SEP 2024	WTE : No	Number Male %	Number Female %	Male WTE : No.	Female WTE : No	Perm Count %	Perm Count Male %	Perm Count Female %	Fulltime Count %	Part time Count %	FT Count Male %	FT Count Female %
Total	11,909	13,227	1:0.9	22.68%	77.32%	1:1	1:0.9	82.87%	15.70%	67.17%	77.33%	22.67%	92.73%	72.81%
Consultant Dentistry	4.46	6	1:0.7	33.33%	66.67%	1:0.7	1:0.8	66.67%	16.67%	50.00%	50.00%	50.00%	50.00%	50.00%
Consultant Emergency Medicine	27	29	1:0.9	62.07%	37.93%	1:1	1:0.9	89.66%	55.17%	34.48%	89.66%	10.34%	94.44%	81.82%
Consultant Surgery	107.44	114	1:0.9	81.58%	18.42%	1:0.9	1:0.9	78.07%	61.40%	16.67%	92.98%	7.02%	93.55%	90.48%
Other Medical	14.48	34	1:0.4	17.65%	82.35%	1:0.3	1:0.5	79.41%	11.76%	67.65%	2.94%	97.06%	16.67%	
Registrar	362.32	375	1:1	59.47%	40.53%	1:1	1:1	5.60%	4.00%	1.60%	97.87%	2.13%	99.10%	96.05%
Senior House Officer	581.94	594	1:1	50.00%	50.00%	1:1	1:1	0.34%	0.17%	0.17%	98.99%	1.01%	98.99%	98.99%
Senior Registrar	24.45	26	1:0.9	65.38%	34.62%	1:1	1:0.9	57.69%	30.77%	26.92%	92.31%	7.69%	100.00%	77.78%
Specialist Registrar	170.39	174	1:1	48.28%	51.72%	1:1	1:1				98.85%	1.15%	100.00%	97.78%
Consultant Anaesthesia	79.51	84	1:0.9	61.90%	38.10%	1:0.9	1:1	75.00%	47.62%	27.38%	95.24%	4.76%	96.15%	93.75%
Consultant Medicine	179.73	194	1:0.9	56.70%	43.30%	1:0.9	1:0.9	76.29%	39.69%	36.60%	90.72%	9.28%	90.00%	91.67%
Consultant Paediatrics	38.36	43	1:0.9	44.19%	55.81%	1:0.9	1:0.8	86.05%	37.21%	48.84%	81.40%	18.60%	84.21%	79.17%
Consultant Pathology	59.85	63	1:1	41.27%	58.73%	1:1	1:0.9	88.89%	34.92%	53.97%	87.30%	12.70%	96.15%	81.08%
Consultant Radiology	52.29	54	1:1	64.81%	35.19%	1:1	1:1	74.07%	44.44%	29.63%	100.00%		100.00%	100.00%
Interns	158.13	159	1:1	31.45%	68.55%	1:1	1:1				100.00%		100.00%	100.00%
Consultant Obstetrics & Gynaecology	31.64	36	1:0.9	50.00%	50.00%	1:0.9	1:0.8	77.78%	41.67%	36.11%	91.67%	8.33%	94.44%	88.89%
Dentists	5.39	6	1:0.9		100.00%	1:	1:0.9	100.00%		100.00%	50.00%	50.00%		50.00%
Consultant Intensive Care Medicine	1	1	1:1		100.00%	1:	1:1	100.00%		100.00%	100.00%			100.00%
Consultant Psychiatry	2	2	1:1		100.00%	1:	1:1	50.00%		50.00%	100.00%			100.00%
Medical & Dental	1,900	1,994	1:1	52.66%	47.34%	1:1	1:0.9	28.28%	15.50%	12.79%	94.53%	5.47%	96.57%	92.27%
Nursing/ Midwifery awaiting registration	59.29	65	1:0.9	9.23%	90.77%	1:0.9	1:0.9	3.08%		3.08%	93.85%	6.15%	100.00%	93.22%
Staff Nurses [General/ Children's]	3,104.27	3,528	1:0.9	8.59%	91.41%	1:1	1:0.9	98.07%	8.48%	89.60%	68.65%	31.35%	92.41%	66.42%
Adv. Nurse/ Midwife, Candidate	60.77	63	1:1	4.76%	95.24%	1:1	1:1	88.89%	4.76%	84.13%	93.65%	6.35%	100.00%	93.33%
Pre-registration Nurse/ Midwife Intern	60.46	123	1:0.5	4.07%	95.93%	1:0.5	1:0.5	0.81%		0.81%	99.19%	0.81%	100.00%	99.15%
Staff Midwives	290.41	353	1:0.8	0.28%	99.72%	1:1	1:0.8	97.73%	0.28%	97.45%	54.11%	45.89%	100.00%	53.98%
Advanced Nurse/ Midwife Practitioner	107.64	113	1:1	10.62%	89.38%	1:1	1:0.9	99.12%	10.62%	88.50%	86.73%	13.27%	100.00%	85.15%
Clinical Nurse/ Midwife Manager 1	133.16	144	1:0.9	12.50%	87.50%	1:1	1:0.9	100.00%	12.50%	87.50%	77.08%	22.92%	88.89%	75.40%
Clinical Nurse/ Midwife Manager 2	479.23	520	1:0.9	6.92%	93.08%	1:1	1:0.9	98.08%	6.73%	91.35%	77.69%	22.31%	86.11%	77.07%
Clinical Nurse/ Midwife Manager 3	67.26	70	1:1	4.29%	95.71%	1:0.8	1:1	98.57%	2.86%	95.71%	92.86%	7.14%	66.67%	94.03%



Demographic Grade Group SEP 2024	WTE SEP 2024	No. SEP 2024	WTE : No	Number Male %	Number Female %	Male WTE : No.	Female WTE : No	Perm Count %	Perm Count Male %	Perm Count Female %	Fulltime Count %	Part time Count %	FT Count Male %	FT Count Female %
Total	11,909	13,227	1:0.9	22.68%	77.32%	1:1	1:0.9	82.87%	15.70%	67.17%	77.33%	22.67%	92.73%	72.81%
Clinical Nurse/ Midwife Spec., Candidate	3.5	4	1:0.9	25.00%	75.00%	1:1	1:0.8	75.00%	25.00%	50.00%	75.00%	25.00%	100.00%	66.67%
Clinical Nurse/ Midwife Specialist	199.29	223	1:0.9	2.24%	97.76%	1:1	1:0.9	98.21%	2.24%	95.96%	77.13%	22.87%	100.00%	76.61%
Director Nursing/Midwifery, Assistant	78.98	85	1:0.9	9.41%	90.59%	1:1	1:0.9	100.00%	9.41%	90.59%	82.35%	17.65%	75.00%	83.12%
Nursing Education/Clinical	41.71	49	1:0.9	4.08%	95.92%	1:1	1:0.8	97.96%	4.08%	93.88%	73.47%	26.53%	100.00%	72.34%
Director of Nursing/Midwifery	20.75	21	1:1	14.29%	85.71%	1:1	1:1	90.48%	9.52%	80.95%	100.00%		100.00%	100.00%
Post-registration Nurse/ Midwife Student	11.06	12	1:0.9		100.00%	1:	1:0.9	75.00%		75.00%	100.00%			100.00%
Staff Nurse [Intellectual Disability]	2	2	1:1		100.00%	1:	1:1	100.00%		100.00%	100.00%			100.00%
Nursing & Midwifery	4,720	5,375	1:0.9	7.55%	92.45%	1:1	1:0.9	94.59%	7.22%	87.37%	71.61%	28.39%	91.87%	69.95%
Phlebotomists	34.14	40	1:0.9	22.50%	77.50%	1:1	1:0.8	80.00%	15.00%	65.00%	65.00%	35.00%	77.78%	61.29%
Pharmacy Technicians	96.8	106	1:0.9	7.55%	92.45%	1:1	1:0.9	89.62%	7.55%	82.08%	83.02%	16.98%	100.00%	81.63%
Speech & Language Therapists	26.5	31	1:0.9		100.00%	1:	1:0.9	90.32%		90.32%	77.42%	22.58%		77.42%
Cardiac Physiologists	43.67	49	1:0.9	14.29%	85.71%	1:0.8	1:0.9	95.92%	14.29%	81.63%	81.63%	18.37%	85.71%	80.95%
Clinical Engineering	20.51	21	1:1	71.43%	28.57%	1:1	1:0.9	100.00%	71.43%	28.57%	95.24%	4.76%	100.00%	83.33%
Counsellor Therapists	0.63	1	1:0.6		100.00%	1:	1:0.6	100.00%		100.00%		100.00%		
Dietitians	56.88	64	1:0.9	1.56%	98.44%	1:1	1:0.9	98.44%	1.56%	96.88%	79.69%	20.31%	100.00%	79.37%
E.C.G. Technicians	0.45	2	1:0.2		100.00%	1:	1:0.2	50.00%		50.00%		100.00%		
Medical Science	341.94	374	1:0.9	16.58%	83.42%	1:1	1:0.9	98.40%	16.04%	82.35%	83.69%	16.31%	93.55%	81.73%
Neuro-Physiologists	3.06	4	1:0.8	25.00%	75.00%	1:1	1:0.7	100.00%	25.00%	75.00%	50.00%	50.00%	100.00%	33.33%
Occupational Therapists	91.26	99	1:0.9	9.09%	90.91%	1:1	1:0.9	87.88%	8.08%	79.80%	84.85%	15.15%	88.89%	84.44%
Perfusionists	2.93	4	1:0.7	25.00%	75.00%	1:0.5	1:0.8	75.00%	25.00%	50.00%	75.00%	25.00%		100.00%
Pharmacists	108.29	127	1:0.9	14.17%	85.83%	1:1	1:0.8	96.85%	14.17%	82.68%	67.72%	32.28%	94.44%	63.30%
Physicists	25.58	27	1:0.9	55.56%	44.44%	1:1	1:0.9	96.30%	51.85%	44.44%	96.30%	3.70%	100.00%	91.67%
Physiotherapists	188	210	1:0.9	28.10%	71.90%	1:1	1:0.9	94.76%	26.67%	68.10%	81.43%	18.57%	96.61%	75.50%
Play Therapists/ Specialists	2.96	5	1:0.6		100.00%	1:	1:0.6	80.00%		80.00%	40.00%	60.00%		40.00%
Psychologists	6.83	8	1:0.9	12.50%	87.50%	1:1	1:0.8	100.00%	12.50%	87.50%	75.00%	25.00%	100.00%	71.43%
Radiation Therapists	34.68	39	1:0.9	20.51%	79.49%	1:1	1:0.9	100.00%	20.51%	79.49%	92.31%	7.69%	100.00%	90.32%
Radiographers	205.13	239	1:0.9	17.57%	82.43%	1:1	1:0.8	99.58%	17.57%	82.01%	66.95%	33.05%	92.86%	61.42%
Social Care	2.34	3	1:0.8		100.00%	1:	1:0.8	33.33%		33.33%	33.33%	66.67%		33.33%
Social Workers	52.03	59	1:0.9	11.86%	88.14%	1:1	1:0.9	72.88%	10.17%	62.71%	72.88%	27.12%	100.00%	69.23%
Audiology	7.93	8	1:1		100.00%	1:	1:1	100.00%		100.00%	100.00%			100.00%
Biochemists	2.93	3	1:1		100.00%	1:	1:1	100.00%		100.00%	100.00%			100.00%
Dental Hygienists	1	1	1:1		100.00%	1:	1:1	100.00%		100.00%	100.00%			100.00%
Dosimetrists	5.75	6	1:1	16.67%	83.33%	1:1	1:1	100.00%	16.67%	83.33%	100.00%		100.00%	100.00%



Demographic Grade Group SEP 2024	WTE SEP 2024	No. SEP 2024	WTE : No	Number Male %	Number Female %	Male WTE : No.	Female WTE : No	Perm Count %	Perm Count Male %	Perm Count Female %	Fulltime Count %	Part time Count %	FT Count Male %	FT Count Female %
Total	11,909	13,227	1:0.9	22.68%	77.32%	1:1	1:0.9	82.87%	15.70%	67.17%	77.33%	22.67%	92.73%	72.81%
Gastrointestinal Physiologists	1	1	1:1	100.00%		1:1	1:	100.00%	100.00%		100.00%		100.00%	
Orthoptists	4.79	5	1:1	20.00%	80.00%	1:1	1:0.9	100.00%	20.00%	80.00%	100.00%		100.00%	100.00%
Other Health & Social Care	9.22	10	1:0.9	10.00%	90.00%	1:1	1:0.9	70.00%	10.00%	60.00%	100.00%		100.00%	100.00%
Podiatrists & Chiropodists	6.99	7	1:1	28.57%	71.43%	1:1	1:1	85.71%	28.57%	57.14%	100.00%		100.00%	100.00%
Respiratory Physiologists	9.85	10	1:1	10.00%	90.00%	1:1	1:1	100.00%	10.00%	90.00%	100.00%		100.00%	100.00%
Vascular Physiologists	3.59	4	1:0.9	25.00%	75.00%	1:1	1:0.9	100.00%	25.00%	75.00%	100.00%		100.00%	100.00%
HSCP Trainees/Students	5.78	16	1:0.4	31.25%	68.75%	1:0.3	1:0.4				12.50%	87.50%		18.18%
Health & Social Care Professionals	1,403	1,583	1:0.9	17.44%	82.56%	1:1	1:0.9	93.62%	16.42%	77.20%	78.27%	21.73%	92.75%	75.21%
General Administrative (III & IV)	1,273.45	1,417	1:0.9	12.70%	87.30%	1:1	1:0.9	88.43%	10.44%	77.98%	75.72%	24.28%	95.56%	72.84%
Middle Management (V-VII)	426.07	448	1:1	14.51%	85.49%	1:1	1:0.9	98.66%	14.29%	84.38%	89.51%	10.49%	100.00%	87.73%
VIII	37.91	40	1:0.9	35.00%	65.00%	1:0.9	1:0.9	85.00%	32.50%	52.50%	97.50%	2.50%	92.86%	100.00%
CEO/Chief Officer	1	1	1:1		100.00%	1:	1:1	100.00%		100.00%	100.00%			100.00%
General Managers	15.98	16	1:1	12.50%	87.50%	1:1	1:1	100.00%	12.50%	87.50%	100.00%		100.00%	100.00%
National Director, Assistant	2	2	1:1	100.00%		1:1	1:	100.00%	100.00%		100.00%		100.00%	
Other Executives	4	4	1:1	75.00%	25.00%	1:1	1:1	100.00%	75.00%	25.00%	100.00%		100.00%	100.00%
Management & Administrative	1,760	1,928	1:0.9	13.80%	86.20%	1:1	1:0.9	90.87%	12.03%	78.84%	79.67%	20.33%	96.62%	76.96%
Household Services	238.37	270	1:0.9	30.37%	69.63%	1:1	1:0.9	80.37%	22.96%	57.41%	65.93%	34.07%	84.15%	57.98%
Other Labs & Associated	128.81	137	1:0.9	32.12%	67.88%	1:1	1:0.9	65.69%	24.09%	41.61%	93.43%	6.57%	93.18%	93.55%
Catering	248.88	277	1:0.9	33.21%	66.79%	1:1	1:0.9	94.58%	29.24%	65.34%	70.04%	29.96%	90.22%	60.00%
Maintenance	94.41	97	1:1	100.00%		1:1	1:	98.97%	98.97%		97.94%	2.06%	97.94%	
Other Support	147.07	162	1:0.9	65.43%	34.57%	1:0.9	1:0.9	91.98%	61.11%	30.86%	79.01%	20.99%	89.62%	58.93%
Portering	169.46	179	1:0.9	84.36%	15.64%	1:1	1:0.9	87.15%	72.07%	15.08%	88.83%	11.17%	93.38%	64.29%
Technical Services	0.9	1	1:0.9	100.00%		1:0.9	1:	100.00%	100.00%		100.00%		100.00%	
General Support	1,028	1,123	1:0.9	51.02%	48.98%	1:1	1:0.9	86.46%	44.61%	41.85%	78.63%	21.37%	91.62%	65.09%
Health Care Assistant/ Care Assistant	735.88	831	1:0.9	25.51%	74.49%	1:0.9	1:0.9	89.53%	22.26%	67.27%	63.30%	36.70%	73.58%	59.77%
Pastoral Care	5.83	8	1:0.7	50.00%	50.00%	1:0.6	1:0.8	62.50%	12.50%	50.00%	50.00%	50.00%	50.00%	50.00%
Health & Social Care Assistants	64.16	73	1:0.9	17.81%	82.19%	1:0.9	1:0.9	89.04%	15.07%	73.97%	65.75%	34.25%	76.92%	63.33%
Attendant/ Aide	200.72	213	1:0.9	68.08%	31.92%	1:1	1:0.9	92.96%	62.91%	30.05%	85.45%	14.55%	93.79%	67.65%
Other Care Grades	90.37	99	1:0.9	55.56%	44.44%	1:1	1:0.8	96.97%	55.56%	41.41%	76.77%	23.23%	96.36%	52.27%
Patient & Client Care	1,097	1,224	1:0.9	35.05%	64.95%	1:0.9	1:0.9	90.52%	31.54%	58.99%	68.30%	31.70%	83.22%	60.25%



Saolta University Hospital Care SEP 2024

Demographic Hospital SEP 2024	WTE SEP 2024	No. SEP 2024	WTE : No	Number Male %	Number Female %	Male WTE : No.	Female WTE : No	Perm Count %	Perm Count Male %	Perm Count Female %	Fulltime Count %	Part time Count %	FT Count Male %	FT Count Female %
Total	11,909	13,227	1:0.9	22.68%	77.32%	1:1	1:0.9	82.87%	15.70%	67.17%	77.33%	22.67%	92.73%	72.81%
Galway University	4,449	4,923	1:0.9	23.14%	76.86%	1:1	1:0.9	81.19%	15.58%	65.61%	80.82%	19.18%	93.42%	77.03%
Letterkenny University	2,198	2,449	1:0.9	23.48%	76.52%	1:1	1:0.9	81.75%	16.21%	65.54%	71.58%	28.42%	89.74%	66.01%
Mayo University	1,486	1,657	1:0.9	21.42%	78.58%	1:1	1:0.9	85.15%	14.48%	70.67%	78.33%	21.67%	95.21%	73.73%
Portiuncula University	1,064	1,184	1:0.9	20.86%	79.14%	1:1	1:0.9	83.70%	13.51%	70.19%	72.38%	27.62%	90.69%	67.56%
Roscommon University	455	508	1:0.9	19.29%	80.71%	1:1	1:0.9	83.66%	14.37%	69.29%	75.00%	25.00%	94.90%	70.24%
Saolta HG HQ	109	114	1:1	19.30%	80.70%	1:1	1:1	85.96%	15.79%	70.18%	94.74%	5.26%	100.00%	93.48%
Sligo University	2,147	2,392	1:0.9	23.58%	76.42%	1:1	1:0.9	85.16%	17.60%	67.56%	77.42%	22.58%	93.09%	72.59%



Month-on-Month Summary

WTE change since AUG 2024	% WTE change since AUG 2024	Overall	Consultants	Registrars	SHO/ Interns	Medical/ Dental/ other	Medical & Dental	Nurse/ Health Manager	Nurse/ Midwife Specialist & ANMP	Staff Nurse/ Staff Midwife	Public Health Nurse	Nursing/ Midwifery Student	Nursing/ Midwifery other	Nursing & Midwifery	Therapy Professionals	Health Science/ Diagnostics	Social Care	Social Workers	Psychologists	Pharmacy	HSC, Other	Health & Social Care Professional s	Management (VII & above)	Administrative / Supervisory (V & VI)	Clerical (III & IV)	Management & Administrative s	Support	Maintenance/ Technical	General Support	Health Care Assistants	Care, other	Patient & Client Care	
Overall	-0.10%	-12.4	+6.1	+16.4	+23.8	+1.5	+35.8	-7.9	-3.8	-33.4		+25.4	-2.1	-21.6	-6.4	-0.7	-0.1	-0.4	+6.4	-0.7	-1.1	-2.9	-1.6	-3.1	-12.1	-16.8	-4.8	-6.4	-5.2	-1.8	+6.0	-1.8	
Galway University	48046	-0.16%	-7.3	+0.6	+4.3	+2.6	+0.6	+8.1	-2.2	-1.5	-7.7		+12.7	-1.7	-0.4	-0.5	-1.0	-0.1	-0.4	+0.4	-0.7	-2.2	-4.5	+0.1	+0.5	-7.2	-6.6	-1.4	+0.6	-0.9	-2.5	-0.6	-3.1
Sligo University	48047	+0.25%	+5.3	+0.4	+1.9	+5.8	+0.9	+9.0	+0.6	-1.4	-5.1		-0.1	+0.1	-5.8	+0.3	+2.8		+0.3	+0.0	-0.1	+0.6	+3.8	-0.5	+0.7	-3.5	-3.2	+0.8	+0.0	+0.8	+0.5	+0.4	+0.9
Letterkenny University	48048	-0.28%	-6.3	+0.3	-0.6	+3.6	+0.0	+3.3	-1.0	-0.2	-11.8		+12.2	+0.0	-0.8	+0.9	-0.6		+0.1		-0.1	+0.4	+0.7	+0.0	-2.5	-2.1	-4.6	-6.2	-0.0	-4.2	+0.7	+0.5	+1.2
Mayo University	48049	+0.35%	+5.2	-2.9	+5.9	+9.2	-0.1	+12.1	-0.7	-0.0	+0.3		-3.3	-0.5	-4.2	-1.1	-0.3		-0.3		-0.2	+0.0	-1.8	+0.0	-1.2	+0.6	-0.6	+1.6	-1.1	+0.5	-0.6	-0.2	-0.9
Portlincula University	48050	-0.51%	-5.4	+0.2	-1.4	+2.3		+1.1	-3.1	+0.2	-7.2		+3.9	+0.0	-6.1	+0.5	-1.4				+0.5	+0.1	-0.4	+0.0	-0.5	+0.4	-0.1	-0.4	-0.2	-0.6	+0.6	+0.0	+0.6
Roscommon University	48051	-0.55%	-2.5	+1.4	+0.3	+0.4		+2.1	-1.7	-0.7	-2.0		+0.0	+0.0	-4.4	-0.5	-0.1				+0.0		-0.0	-0.0	-0.3	-0.3	+0.9	+0.3	+1.2	-0.5	+0.0	-0.5	
Saolta HQ	48052	-1.27%	-1.4	+0.0			+0.0	+0.1		+0.0				+0.1		-0.1						-0.1	-1.2	-0.2	+0.0	-1.4							

Saolta University Hospital Care Employment Report: SEP 2024

Year-to-Date Summary

WTE change since DEC 2023	% WTE change since DEC 2023	Overall	Consultants	Registrars	SHO/ Interns	Medical/ Dental, other	Medical & Dental	Nurse/ Midwife Manager	Nurse/ Midwife Specialist & ANMP	Staff Nurse/ Staff Midwife	Public Health Nurse	Nursing/ Midwifery Student	Nursing/ Midwifery other	Nursing & Midwifery	Therapy Professors	Health Science/ Diagnostics	Social Care	Social Workers	Psychologists	Pharmacy	H&SC, Other	Health & Social Care Professionals	Management (VIII & above)	Administrative / Supervisory (V to VII)	Clerical (III & IV)	Management & Administrative	Support	Maintenance/ Technical	General Support	Health Care Assistants	Care, other	Patient & Client Care
Overall	-1.51%	-183	+27	+25	+17	+7	+77	-33	+4	-123		+75	+3	-74	-6	-0	-0	-2	-0	+3	-21	-26	-6	-18	-72	-96	-6	-9	-15	-45	-3	-47
Galway University	-2.18%	-99	+10	+15	+14	+8	+48	-13	+3	-93		+38	-3	-71	-3	+1	-0	-1	-0	-1	-12	-17	-1	-7	-31	-39	+2	-0	+2	-22	+0	-22
Sligo University	-0.22%	-5	+8	+1	+9	-1	+15	+2	-2	-10		+10	+2	+0	-4	+0			+0	+2	-0	-0	-0	+1	-11	-11	+3	+0	+3	-6	-4	-10
Letterkenny University	-0.27%	-6	+7	+12	-4	+0	+15	-12	+7	-14		+29	+4	+14	+3	+2			-0	-1	-5	-0	-0	-8	-7	-14	-7	-3	-10	-10	-1	-11
Mayo University	-1.98%	-30	+5	-1	-4	+0	+0	-3	+1	-0		-4	-1	-7	+0	-1		+0	+0	+0	-1	-1	+0	-3	-13	-16	+1	-6	-5	-3	+2	-1
Portluncula University	-1.11%	-12	+0	-2	+4		+2	-1	-2	-4		+3	-0	-4	-1	-2		+0	+0	+2	-3	-4	+0	+3	-6	-3	-3	+0	-3	-1	+0	-1
Roscommon University	-4.50%	-21	-1	+0	-3		-4	-4	-2	-3		+2	+0	-8	-2	+0		-0		-1		-2	-2	-0	-1	-3	-1	+0	-1	-2	+0	-2
Saolta HG HQ	-7.92%	-9	+0				+0	-0		+1				+1	+0					-1		+0	-3	-6	-1	-10						



Saolta University Hospital Care Employment Report: SEP 2024

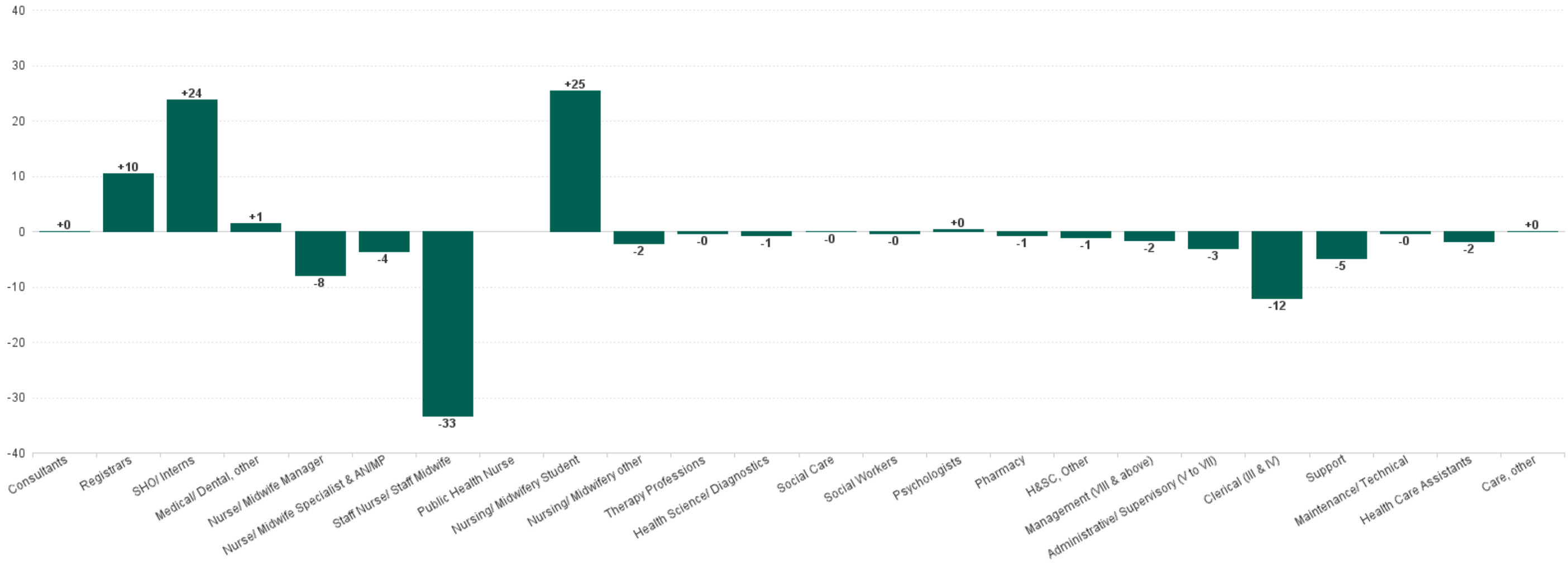
Year-on-Year Summary

WTE change since SEP 2023	% WTE change since SEP 2023	Overall	Consultants	Registrars	SHO/ Interns	Medical/ Dental, other	Medical & Dental	Nurse/ Midwife Manager	Nurse/ Midwife Specialist & AN/MP	Staff Nurse/ Staff Midwife	Public Health Nurse	Nursing/ Midwifery Student	Nursing/ Midwifery other	Nursing & Midwifery	Therapy Professors	Health Science/ Diagnostics	Social Care	Social Workers	Psychologists	Pharmacy	H&SC, Other	Health & Social Care Professionals	Management (VIII & above)	Administrative / Supervisory (V to VII)	Clerical (III & IV)	Management & Administrative	Support	Maintenance/ Technical	General Support	Health Care Assistants	Care, other	Patient & Client Care
Overall	-0.00%	-0	+42	+19	+38	+7	+106	-12	+22	-23		+7	+5	-0	+9	+11	+0	+4	+1	+1	-5	+22	-10	-10	-38	-58	-21	-7	-28	-41	-0	-42
Galway University	-0.61%	-27	+12	+12	+20	+8	+51	-12	+10	-48		+9	-2	-44	+6	+4	+0	+2	+1	-3	-3	+8	-1	-3	-7	-11	-5	-1	-6	-27	+1	-26
Sligo University	+0.95%	+20	+9	+4	+11	-1	+24	+14	+1	-12		+6	+2	+11	-1	+5		-1	+0	+1	+1	+6	-0	+3	-8	-5	-2	+0	-2	-10	-3	-13
Letterkenny University	+1.45%	+31	+8	+10	+2	+1	+20	-14	+10	+17		+8	+4	+25	+6	+3		+0		+0	-1	+7	-1	-8	-2	-10	-7	-3	-10	-1	-0	-1
Mayo University	-1.57%	-24	+8	-3	-0	-1	+4	+0	+6	+4		-22	+0	-11	-1	-3		+2		+0	-1	-4	+0	-2	-7	-9	+1	-3	-3	-3	+1	-1
Portluncula University	+3.80%	+39	+7	-3	+7		+11	+2	-2	+16		+5	-0	+21	+1	+4		+0		+3	-0	+7	+0	+5	-5	+1	-4	+0	-4	+3	+0	+3
Roscommon University	-4.36%	-21	-1	-1	-2		-4	-3	-3	+3		+1	+0	-1	-1	-1		-0		-1		-3	-2	-1	-3	-6	-3	+0	-3	-3	+0	-3
Saolta HG HQ	-15.09%	-19	+0				+0	+1		-3				-2	+0							+0	-6	-5	-7	-18						



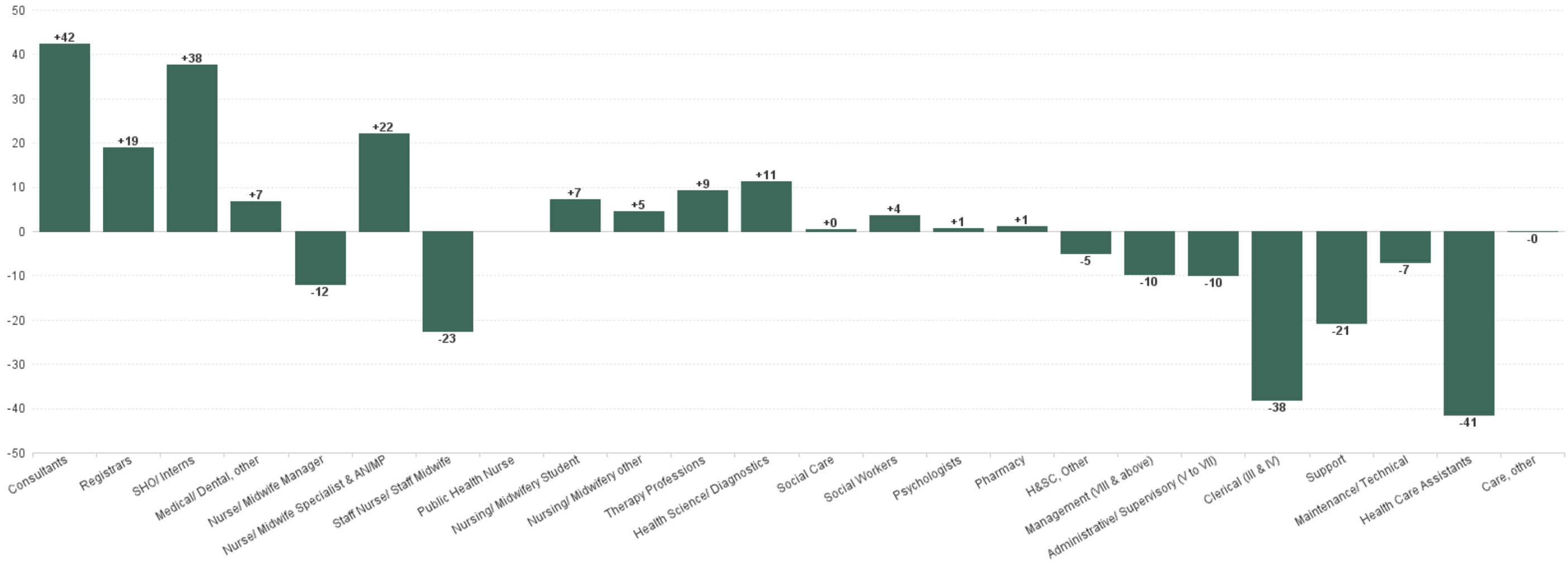
Saolta University Hospital Care Employment Report: SEP 20

Previous Month Summary Chart: Change since AUG 2024



Saolta University Hospital Care Employment Report: SEP 2024

Previous Year Summary Chart: Change since SEP 2023



Saolta University Hospital Care Employment Report: SEP 20

YTD Summary Chart: Change since DEC 2023

