

## CHO 9 Employment Report: MAY 2024

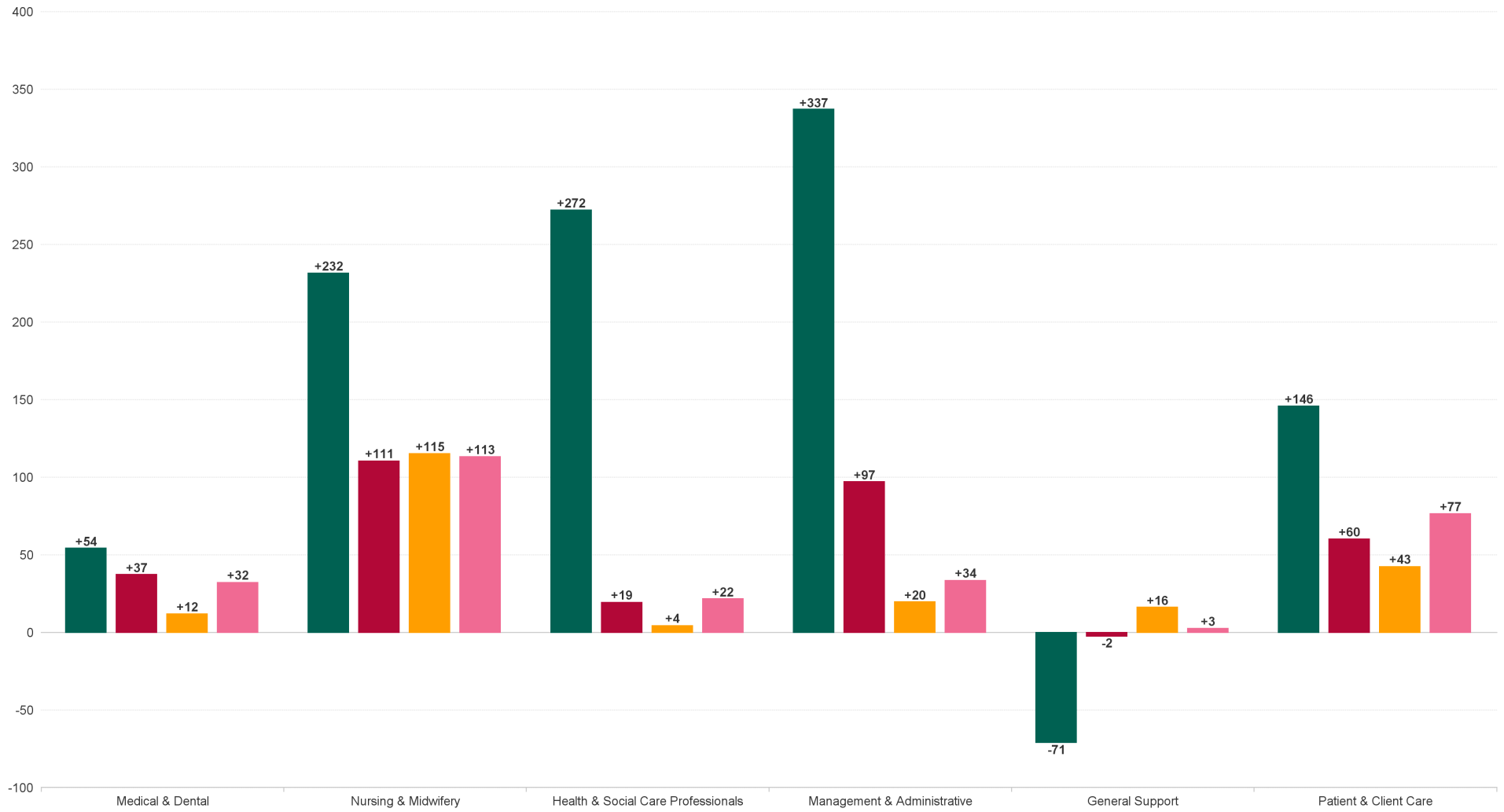
### Employment by Staff Group (1) MAY 2024

Employment by Staff Group (1) MAY 2024	WTE DEC 2019	WTE DEC 2022	WTE DEC 2023	WTE APR 2024	WTE MAY 2024	WTE Change 2023	WTE Change 2024	WTE Change APR 2024	WTE Change Dec 2022 to MAY 2024	WTE Change Dec 2019 to MAY 2024	% WTE Change Dec 2022 to MAY 2024	No. MAY 2024
<b>Overall</b>	<b>6,582</b>	<b>7,230</b>	<b>7,342</b>	<b>7,584</b>	<b>7,553</b>	<b>+112</b>	<b>+210</b>	<b>-32</b>	<b>+323</b>	<b>+970</b>	<b>4.46%</b>	<b>8,700</b>
Consultants	68	71	79	77	77	+8	-1	+0	+7	+9	9.79%	83
Registrars	98	128	119	126	128	-9	+9	+2	+0	+30	0.10%	135
SHO/ Interns	66	52	81	86	88	+29	+7	+1	+36	+21	69.07%	89
Medical/ Dental, other	57	56	54	52	51	-3	-3	-1	-5	-6	-9.45%	67
<b>Medical &amp; Dental</b>	<b>290</b>	<b>306</b>	<b>332</b>	<b>341</b>	<b>344</b>	<b>+25</b>	<b>+12</b>	<b>+3</b>	<b>+37</b>	<b>+54</b>	<b>12.23%</b>	<b>374</b>
Nurse/ Midwife Manager	435	488	513	530	525	+25	+12	-5	+37	+90	7.49%	563
Nurse/ Midwife Specialist & AN/MP	85	149	160	194	194	+11	+34	+0	+45	+109	30.47%	218
Staff Nurse/ Staff Midwife	1,196	1,214	1,177	1,240	1,234	-37	+57	-5	+20	+39	1.64%	1,385
Public Health Nurse	176	172	171	171	164	-1	-8	-7	-8	-12	-4.83%	200
Nursing/ Midwifery awaiting registration	11	16	6.01	1	1	-10	-5	+0	-15	-10	-93.66%	1
Post-registration Nurse/ Midwife Student	26	19	20	19	17	+1	-3	-2	-2	-9	-7.97%	18
Pre-registration Nurse/ Midwife Intern	18	8	16.87	42	42	+9	+25	-1	+34	+24	421.50%	84
Nursing/ Midwifery Student	55	43	43	62	60	+0	+17	-2	+17	+5	40.95%	103
Nursing/ Midwifery other	20	20	17	21	20	-3	+2	-1	-0	-0	-2.19%	23
<b>Nursing &amp; Midwifery</b>	<b>1,966</b>	<b>2,087</b>	<b>2,082</b>	<b>2,217</b>	<b>2,197</b>	<b>-5</b>	<b>+115</b>	<b>-20</b>	<b>+111</b>	<b>+232</b>	<b>5.30%</b>	<b>2,492</b>
Dietitians	21	40	49.58	54	53	+9	+4	-1	+13	+32	31.75%	61
Occupational Therapists	182	229	223.78	219	218	-5	-5	-0	-10	+36	-4.42%	240
Orthoptists	5	3	4.2	3	3	+1	-1	+0	+0	-2	15.94%	4
Physiotherapists	144	158	157.95	152	151	+0	-7	-1	-7	+7	-4.42%	182
Podiatrists & Chiropodists	1	6	6.65	7	7	+1	-0	-0	+1	+6	15.67%	7
Speech & Language Therapists	133	152	137.98	140	139	-14	+1	-1	-12	+6	-8.19%	159
Therapy Professions	486	587	580	574	571	-7	-9	-3	-15	+85	-2.62%	653
Health Science/ Diagnostics	37	26	27	27	26	+1	-1	-1	+0	-10	1.74%	28
Social Care	695	804	790	795	790	-14	-1	-5	-15	+95	-1.81%	969
Social Workers	125	161	164	178	177	+3	+13	-1	+16	+51	9.97%	195
Psychologists	164	187	200	200	202	+14	+1	+2	+15	+38	7.94%	221
Pharmacy	25	27	33	34	34	+6	+1	-0	+7	+9	25.46%	44
H&SC, Other	71	64	76	76	76	+11	+0	-0	+11	+5	17.40%	85
<b>Health &amp; Social Care Professionals</b>	<b>1,603</b>	<b>1,856</b>	<b>1,871</b>	<b>1,883</b>	<b>1,875</b>	<b>+15</b>	<b>+4</b>	<b>-8</b>	<b>+19</b>	<b>+272</b>	<b>1.05%</b>	<b>2,195</b>
Management (VIII & above)	79	97	103	102	101	+6	-2	-2	+4	+21	4.10%	102
Administrative/ Supervisory (V to VII)	208	360	404	420	419	+44	+15	-1	+59	+211	16.45%	444
Clerical (III & IV)	451	522	549	559	556	+27	+7	-3	+34	+105	6.51%	641
<b>Management &amp; Administrative</b>	<b>739</b>	<b>979</b>	<b>1,056</b>	<b>1,081</b>	<b>1,076</b>	<b>+77</b>	<b>+20</b>	<b>-5</b>	<b>+97</b>	<b>+337</b>	<b>9.93%</b>	<b>1,187</b>
Support	452	383	365	372	377	-18	+12	+5	-6	-75	-1.58%	460
Maintenance/ Technical	35	36	35	39	39	-0	+4	+0	+4	+4	10.55%	41
<b>General Support</b>	<b>487</b>	<b>419</b>	<b>400</b>	<b>412</b>	<b>416</b>	<b>-19</b>	<b>+16</b>	<b>+5</b>	<b>-2</b>	<b>-71</b>	<b>-0.55%</b>	<b>501</b>
Health Care Assistants	1,278	1,315	1,350	1,394	1,391	+35	+41	-3	+76	+113	5.74%	1,662
Care, other	221	269	252	256	254	-17	+2	-3	-15	+33	-5.64%	289
<b>Patient &amp; Client Care</b>	<b>1,499</b>	<b>1,584</b>	<b>1,602</b>	<b>1,650</b>	<b>1,644</b>	<b>+18</b>	<b>+43</b>	<b>-6</b>	<b>+60</b>	<b>+146</b>	<b>3.81%</b>	<b>1,951</b>



# WTE Change by Staff Category

■ WTE change since DEC 2019 
 ■ WTE change since DEC 2022 
 ■ WTE change since DEC 2023 
 ■ WTE change since MAY 2023

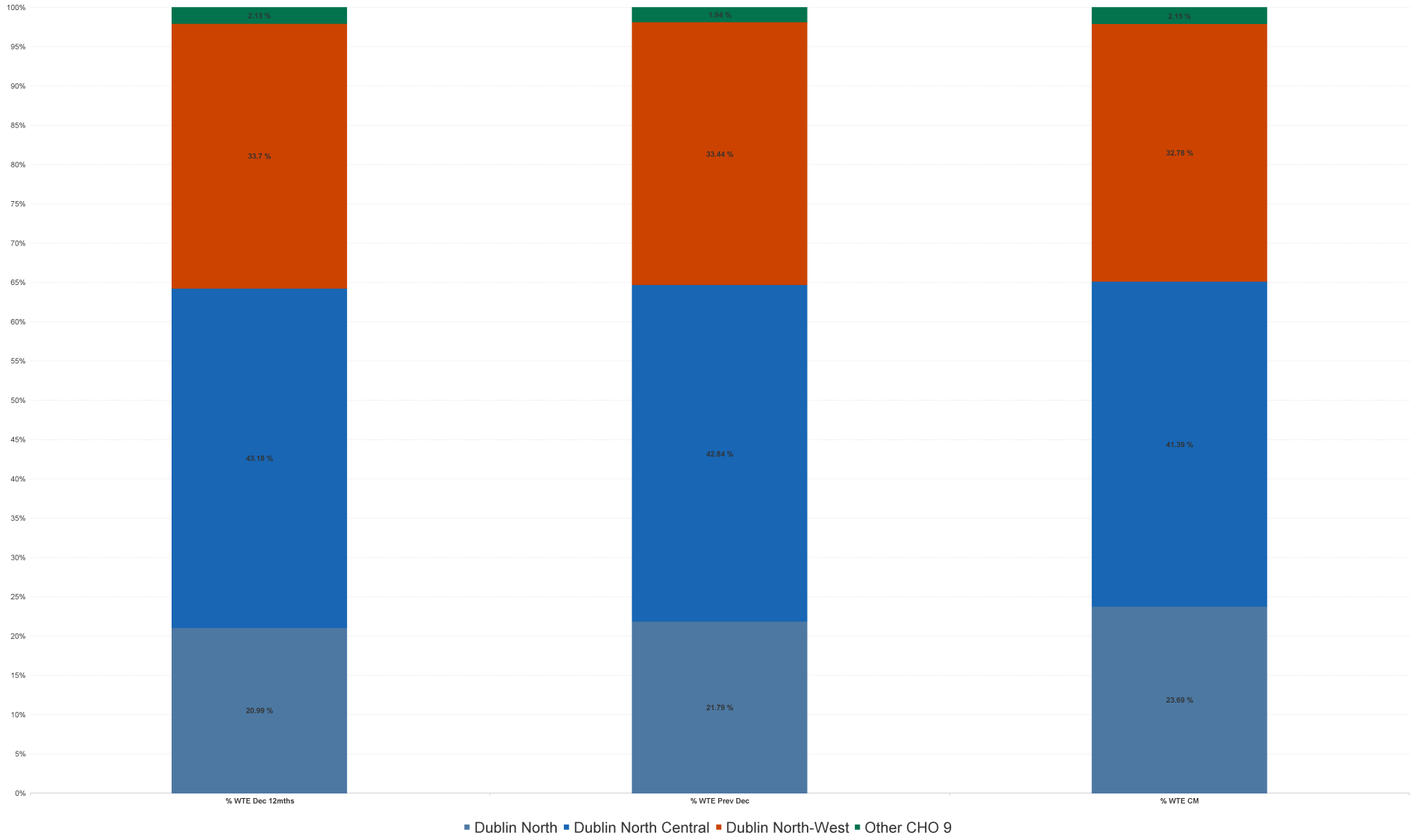


## Employment Report by Hospital: MAY 2024

Hospital MAY 2024	WTE DEC 2019	WTE DEC 2022	WTE DEC 2023	WTE APR 2024	WTE MAY 2024	WTE Change 2023	WTE Change 2024	WTE Change APR 2024	WTE Change Dec 2022 to MAY 2024	WTE Change Dec 2019 to MAY 2024	% WTE Change Dec 2022 to MAY 2024	No. MAY 2024
<b>Overall</b>	<b>6,582</b>	<b>7,230</b>	<b>7,342</b>	<b>7,584</b>	<b>7,553</b>	<b>+112</b>	<b>+210</b>	<b>-32</b>	<b>+323</b>	<b>+970</b>	<b>4.46%</b>	<b>8,700</b>
Dublin North	1,274	1,517	1,600	1,814	1,789	+82	+189	-25	+272	+515	17.90%	2,037
Dublin North Central	2,973	3,122	3,145	3,136	3,126	+24	-20	-10	+4	+152	0.12%	3,690
Dublin North-West	2,305	2,437	2,455	2,486	2,476	+19	+21	-10	+39	+171	1.61%	2,801
Other CHO 9	30	154	142	148	162	-12	+20	+14	+8	+132	5.15%	172



### % Total by Hospital



## Employment Report by HSE/S38: MAY 2024

Administration MAY 2024	WTE DEC 2019	WTE DEC 2022	WTE DEC 2023	WTE APR 2024	WTE MAY 2024	WTE Change 2023	WTE Change 2024	WTE Change APR 2024	WTE Change Dec 2022 to MAY 2024	WTE Change Dec 2019 to MAY 2024	% WTE Change Dec 2022 to MAY 2024	No. MAY 2024
<b>Overall</b>	<b>6,582</b>	<b>7,230</b>	<b>7,342</b>	<b>7,584</b>	<b>7,553</b>	<b>+112</b>	<b>+210</b>	<b>-32</b>	<b>+323</b>	<b>+970</b>	<b>4.46%</b>	<b>8,700</b>
Health Service Executive	3,407	3,905	4,028	4,011	3,986	+123	-42	-25	+81	+579	2.09%	4,421
Section 38 Voluntary Agencies	3,175	3,325	3,314	3,574	3,567	-11	+252	-7	+241	+392	7.25%	4,279



# Employment Report by Administration: MAY 2024

## Health Service Executive

MAY 2024	WTE DEC 2019	WTE DEC 2022	WTE DEC 2023	WTE APR 2024	WTE MAY 2024	WTE Change 2023	WTE Change 2024	WTE Change APR 2024	WTE Change Dec 2022 to MAY 2024	WTE Change Dec 2019 to MAY 2024	% WTE Change Dec 2022 to MAY 2024	No. MAY 2024
<b>Total Health Service Executive</b>	<b>3,407</b>	<b>3,905</b>	<b>4,028</b>	<b>4,011</b>	<b>3,986</b>	<b>+123</b>	<b>-42</b>	<b>-25</b>	<b>+81</b>	<b>+579</b>	<b>2.09%</b>	<b>4,421</b>
Consultants	56	59	65	65	65	+6	-0	+0	+6	+9	9.51%	67
Registrars	90	123	112	115	117	-11	+5	+2	-6	+27	-4.86%	122
SHO/ Interns	60	47	74	75	77	+27	+3	+1	+30	+16	63.63%	78
Medical/ Dental, other	51	50	48	47	46	-2	-2	-1	-4	-5	-8.20%	61
<b>Medical &amp; Dental</b>	<b>257</b>	<b>279</b>	<b>299</b>	<b>301</b>	<b>304</b>	<b>+20</b>	<b>+5</b>	<b>+3</b>	<b>+25</b>	<b>+47</b>	<b>9.08%</b>	<b>328</b>
Nurse/ Midwife Manager	248	287	316	306	302	+29	-14	-4	+15	+55	5.27%	320
Nurse/ Midwife Specialist & AN/MP	75	134	146	149	150	+12	+4	+1	+16	+75	11.77%	162
Staff Nurse/ Staff Midwife	693	726	733	732	725	+6	-7	-7	-1	+32	-0.18%	792
Public Health Nurse	176	172	171	171	164	-1	-8	-7	-8	-12	-4.83%	200
<i>Nursing/ Midwifery awaiting registration</i>	11	15	+6	1	1	+4	-5	-4	-14	-10	-14	1
<i>Post-registration Nurse/ Midwife Student</i>	26	19	+20	19	17	-7	-3	-1	-2	-9	-2	18
<i>Pre-registration Nurse/ Midwife Intern</i>	3		+0	26	25	-3	+25	+6	+25	+22	+25	51
Nursing/ Midwifery Student	40	34	26	46	44	-7	+17	-2	+10	+3	29.59%	70
Nursing/ Midwifery other	13	12	13	11	10	+1	-2	-1	-2	-3	-15.38%	12
<b>Nursing &amp; Midwifery</b>	<b>1,244</b>	<b>1,365</b>	<b>1,405</b>	<b>1,415</b>	<b>1,395</b>	<b>+40</b>	<b>-10</b>	<b>-20</b>	<b>+29</b>	<b>+151</b>	<b>2.15%</b>	<b>1,556</b>
<i>Dietitians</i>	15	32	+41	46	45	+17	+5	+12	+13	+31	+13	52
<i>Occupational Therapists</i>	119	141	+135	124	123	+22	-13	-16	-18	+4	-18	139
<i>Orthoptists</i>	5	3	+4	3	3	-2	-1	+1	+0	-2	+0	4
<i>Physiotherapists</i>	75	79	+85	84	83	+4	-2	+1	+4	+8	+4	100
<i>Podiatrists &amp; Chiropractors</i>	1	6	+7	7	7	+5	-0	-2	+1	+6	+1	7
<i>Speech &amp; Language Therapists</i>	85	102	+91	90	89	+17	-2	-7	-13	+4	-13	105
Therapy Professions	300	363	363	354	350	+1	-13	-4	-13	+50	-3.48%	407
Health Science/ Diagnostics	21	13	13	13	12	+0	-1	-1	-1	-8	-4.28%	13
Social Care	7	11	11	11	11	+0	-1	-1	-1	+4	-4.88%	13
Social Workers	78	103	106	107	107	+2	+2	+1	+4	+29	3.98%	116
Psychologists	124	138	149	148	150	+11	+1	+1	+12	+26	8.55%	163
Pharmacy	18	20	25	23	23	+5	-2	-0	+3	+5	16.91%	29
H&SC, Other	57	54	65	67	65	+11	+0	-2	+11	+9	20.61%	72
<b>Health &amp; Social Care Professionals</b>	<b>605</b>	<b>701</b>	<b>732</b>	<b>723</b>	<b>718</b>	<b>+31</b>	<b>-14</b>	<b>-5</b>	<b>+17</b>	<b>+113</b>	<b>2.37%</b>	<b>813</b>
Management (VIII & above)	44	58	61	57	56	+3	-5	-2	-2	+12	-3.52%	57
Administrative/ Supervisory (V to VII)	112	241	256	249	248	+14	-7	-1	+7	+136	2.89%	262
Clerical (III & IV)	303	374	397	391	389	+24	-8	-1	+16	+86	4.25%	433
<b>Management &amp; Administrative</b>	<b>459</b>	<b>673</b>	<b>714</b>	<b>697</b>	<b>693</b>	<b>+41</b>	<b>-20</b>	<b>-4</b>	<b>+21</b>	<b>+234</b>	<b>3.09%</b>	<b>752</b>
Support	198	182	177	174	182	-5	+5	+8	+0	-16	0.14%	203
Maintenance/ Technical	9	10	8	9	9	-2	+1	+0	-1	+0	-8.75%	10
<b>General Support</b>	<b>207</b>	<b>192</b>	<b>185</b>	<b>184</b>	<b>191</b>	<b>-7</b>	<b>+6</b>	<b>+8</b>	<b>-1</b>	<b>-16</b>	<b>-0.34%</b>	<b>213</b>
Health Care Assistants	510	527	518	519	514	-9	-3	-5	-12	+4	-2.33%	569
Care, other	125	168	175	171	170	+7	-5	-1	+2	+45	1.35%	190
<b>Patient &amp; Client Care</b>	<b>635</b>	<b>694</b>	<b>693</b>	<b>690</b>	<b>684</b>	<b>-1</b>	<b>-9</b>	<b>-6</b>	<b>-10</b>	<b>+50</b>	<b>-1.44%</b>	<b>759</b>



## Section 38 Voluntary Agencies

MAY 2024	WTE DEC 2019	WTE DEC 2022	WTE DEC 2023	WTE APR 2024	WTE MAY 2024	WTE Change 2023	WTE Change 2024	WTE Change APR 2024	WTE Change Dec 2022 to MAY 2024	WTE Change Dec 2019 to MAY 2024	% WTE Change Dec 2022 to MAY 2024	No. MAY 2024
<b>Total Section 38 Voluntary Agencies</b>	<b>3,175</b>	<b>3,325</b>	<b>3,314</b>	<b>3,574</b>	<b>3,567</b>	<b>-11</b>	<b>252</b>	<b>-7</b>	<b>+241</b>	<b>+392</b>	<b>7.25%</b>	<b>4,279</b>
Consultants	12	11	13	12	12	+2	-1	+0	+1	+0	11.24%	16
Registrars	8	5	7	11	11	+2	+5	+0	+6	+3	122.20%	13
SHO/ Interns	6	5	7	11	11	+2	+4	+0	+6	+5	120.00%	11
Medical/ Dental, other	6	6	6	5	5	-0	-1	+0	-1	-1	-19.48%	6
<b>Medical &amp; Dental</b>	<b>32</b>	<b>27</b>	<b>33</b>	<b>39</b>	<b>39</b>	<b>+6</b>	<b>+7</b>	<b>+0</b>	<b>+12</b>	<b>+7</b>	<b>44.46%</b>	<b>46</b>
Nurse/ Midwife Manager	188	201	197	224	223	-4	+26	-1	+22	+35	10.67%	243
Nurse/ Midwife Specialist & AN/MP	10	15	14	45	44	-1	+30	-0	+30	+34	200.41%	56
Staff Nurse/ Staff Midwife	502	488	444	508	509	-44	+65	+2	+21	+7	4.34%	593
<i>Nursing/ Midwifery awaiting registration</i>		1				+1			-1		-1	
<i>Pre-registration Nurse/ Midwife Intern</i>	15	8	+17	17	17	-7	+0	-3	+9	+2	+9	33
Nursing/ Midwifery Student	15	9	17	17	17	+8	+0	+0	+8	+2	83.33%	33
Nursing/ Midwifery other	7	8	5	9	9	-4	+5	+0	+1	+3	17.66%	11
<b>Nursing &amp; Midwifery</b>	<b>721</b>	<b>721</b>	<b>677</b>	<b>802</b>	<b>802</b>	<b>-44</b>	<b>+126</b>	<b>+0</b>	<b>+81</b>	<b>+81</b>	<b>11.26%</b>	<b>936</b>
<i>Dietitians</i>	7	8	+9	8	8	+2	-1	-2	-0	+1	-0	9
<i>Occupational Therapists</i>	64	88	+88	95	96	+24	+7	+18	+8	+32	+8	101
<i>Physiotherapists</i>	69	79	+73	68	68	+10	-5	-4	-11	-1	-11	82
<i>Speech &amp; Language Therapists</i>	48	49	+47	50	50	+1	+4	-1	+1	+2	+1	54
Therapy Professions	186	224	217	220	221	-7	+4	+1	-3	+35	-1.22%	246
Health Science/ Diagnostics	16	13	14	14	14	+1	+0	+0	+1	-2	7.69%	15
Social Care	688	793	779	784	779	-14	-0	-5	-14	+91	-1.76%	956
Social Workers	47	58	59	71	69	+1	+11	-2	+12	+22	20.71%	79
Psychologists	40	49	51	51	52	+2	+1	+1	+3	+12	6.24%	58
Pharmacy	6	7	8	11	11	+1	+3	+0	+4	+4	48.36%	15
H&SC, Other	14	10	11	9	11	+0	-0	+2	+0	-3	0.77%	13
<b>Health &amp; Social Care Professionals</b>	<b>998</b>	<b>1,154</b>	<b>1,138</b>	<b>1,160</b>	<b>1,157</b>	<b>-16</b>	<b>+19</b>	<b>-3</b>	<b>+3</b>	<b>+159</b>	<b>0.25%</b>	<b>1,382</b>
Management (VIII & above)	35	39	42	45	45	+3	+3	+0	+6	+10	15.38%	45
Administrative/ Supervisory (V to VII)	96	119	148	171	171	+30	+23	+0	+52	+75	44.07%	182
Clerical (III & IV)	148	149	152	168	167	+4	+14	-1	+18	+18	12.19%	208
<b>Management &amp; Administrative</b>	<b>279</b>	<b>306</b>	<b>342</b>	<b>384</b>	<b>382</b>	<b>+36</b>	<b>+40</b>	<b>-1</b>	<b>+76</b>	<b>+103</b>	<b>24.94%</b>	<b>435</b>
Support	254	202	188	198	195	-14	+7	-3	-6	-59	-3.13%	257
Maintenance/ Technical	26	25	27	30	30	+2	+3	+0	+5	+4	18.42%	31
<b>General Support</b>	<b>280</b>	<b>227</b>	<b>215</b>	<b>228</b>	<b>225</b>	<b>-12</b>	<b>+10</b>	<b>-3</b>	<b>-2</b>	<b>-55</b>	<b>-0.73%</b>	<b>288</b>
Health Care Assistants	768	789	832	875	877	+44	+44	+1	+88	+109	11.13%	1,093
Care, other	96	101	77	85	84	-24	+7	-2	-17	-13	-17.25%	99
<b>Patient &amp; Client Care</b>	<b>864</b>	<b>890</b>	<b>909</b>	<b>960</b>	<b>960</b>	<b>+19</b>	<b>+51</b>	<b>-0</b>	<b>+70</b>	<b>+96</b>	<b>7.91%</b>	<b>1,192</b>



## Employment Report by Hospital : MAY 2024

Dublin North	WTE DEC 2019	WTE DEC 2022	WTE DEC 2023	WTE APR 2024	WTE MAY 2024	WTE Change 2023	WTE Change 2024	WTE Change APR 2024	WTE Change Dec 2022 to MAY 2024	WTE Change Dec 2019 to MAY 2024	% WTE Change Dec 2022 to MAY 2024	No. MAY 2024
<b>Total Dublin North</b>	<b>1,274</b>	<b>1,517</b>	<b>1,600</b>	<b>1,814</b>	<b>1,789</b>	<b>+82</b>	<b>+189</b>	<b>-25</b>	<b>+272</b>	<b>+515</b>	<b>17.90%</b>	<b>2,037</b>
Consultants	14	14	16	14	14	+2	-1	+0	+0	-0	1.64%	15
Registrars	68	71	72	81	82	+1	+9	+0	+10	+14	14.68%	87
SHO/ Interns	11	17	29	31	32	+12	+2	+0	+15	+21	85.19%	32
Medical/ Dental, other	20	18	18	17	17	+0	-2	-0	-1	-3	-6.70%	23
<b>Medical &amp; Dental</b>	<b>112</b>	<b>120</b>	<b>136</b>	<b>144</b>	<b>144</b>	<b>+15</b>	<b>+9</b>	<b>+1</b>	<b>+24</b>	<b>+32</b>	<b>20.03%</b>	<b>157</b>
Nurse/ Midwife Manager	104	114	132	143	142	+18	+10	-1	+28	+38	24.92%	153
Nurse/ Midwife Specialist & AN/MP	16	48	60	94	90	+13	+29	-5	+42	+74	87.54%	106
Staff Nurse/ Staff Midwife	313	307	319	365	362	+12	+43	-3	+55	+49	17.76%	399
Public Health Nurse	66	65	68	67	64	+3	-4	-3	-1	-2	-2.01%	78
<i>Nursing/ Midwifery awaiting registration</i>	6	13	6.01	1	1	-7	-5	+0	-12	-5	-92.33%	1
<i>Post-registration Nurse/ Midwife Student</i>	16	9	6	6	6	-3	-1	-1	-3	-11	-38.27%	6
<i>Pre-registration Nurse/ Midwife Intern</i>	3		0.37	26	25	+0	+25	-1	+25	+22	-100.00%	51
Nursing/ Midwifery Student	26	22	12	33	32	-10	+19	-1	+10	+6	44.51%	58
Nursing/ Midwifery other	12	11	12	13	13	+1	+1	-1	+2	+1	14.14%	15
<b>Nursing &amp; Midwifery</b>	<b>536</b>	<b>567</b>	<b>604</b>	<b>715</b>	<b>702</b>	<b>+37</b>	<b>+98</b>	<b>-13</b>	<b>+135</b>	<b>+166</b>	<b>23.77%</b>	<b>809</b>
<i>Dietitians</i>	2	15	19.29	26	25	+4	+5	-2	+10	+22	63.94%	28
<i>Occupational Therapists</i>	39	49	43.31	47	46	-5	+2	-1	-3	+6	-6.21%	54
<i>Physiotherapists</i>	25	29	35.01	42	38	+6	+3	-4	+9	+13	31.71%	46
<i>Podiatrists &amp; Chiropodists</i>		6	6.65	7	7	+1	-0	-0	+1	+7	15.67%	7
<i>Speech &amp; Language Therapists</i>	29	30	29.75	25	24	-0	-6	-1	-6	-5	-19.41%	28
Therapy Professions	95	128	134	147	139	+6	+5	-8	+11	+44	8.51%	163
Social Care	2	4	2	2	2	-2	+0	+0	-2	+0	-48.98%	2
Social Workers	27	24	23	36	36	-1	+13	-1	+12	+9	47.15%	41
Psychologists	27	23	26	27	27	+3	+1	+1	+4	-0	16.27%	30
Pharmacy			1	4	4	+1	+3	+0	+4	+4	-100.00%	6
H&SC, Other	7	8	13	13	12	+4	-0	-0	+4	+5	46.10%	14
<b>Health &amp; Social Care Professionals</b>	<b>159</b>	<b>188</b>	<b>199</b>	<b>229</b>	<b>221</b>	<b>+11</b>	<b>+22</b>	<b>-8</b>	<b>+32</b>	<b>+62</b>	<b>17.11%</b>	<b>256</b>
Management (VIII & above)	1	18	26	25	24	+8	-3	-2	+6	+23	31.16%	24
Administrative/ Supervisory (V to VII)	21	71	84	94	96	+13	+12	+2	+25	+75	35.99%	101
Clerical (III & IV)	80	142	146	162	160	+4	+14	-2	+18	+81	12.96%	188
<b>Management &amp; Administrative</b>	<b>102</b>	<b>231</b>	<b>257</b>	<b>282</b>	<b>280</b>	<b>+26</b>	<b>+24</b>	<b>-1</b>	<b>+49</b>	<b>+179</b>	<b>21.45%</b>	<b>313</b>
Support	66	64	66	77	76	+2	+10	-1	+12	+10	19.39%	89
Maintenance/ Technical	6	5	5	8	8	+0	+3	+0	+3	+2	61.62%	8
<b>General Support</b>	<b>72</b>	<b>69</b>	<b>71</b>	<b>85</b>	<b>84</b>	<b>+2</b>	<b>+13</b>	<b>-1</b>	<b>+15</b>	<b>+12</b>	<b>22.44%</b>	<b>97</b>
Health Care Assistants	269	276	260	286	284	-16	+23	-3	+7	+14	2.70%	323
Care, other	24	66	73	74	74	+7	+1	+0	+8	+50	12.39%	82
<b>Patient &amp; Client Care</b>	<b>294</b>	<b>342</b>	<b>334</b>	<b>360</b>	<b>358</b>	<b>-8</b>	<b>+24</b>	<b>-2</b>	<b>+16</b>	<b>+64</b>	<b>4.57%</b>	<b>405</b>

Dublin North Central	WTE DEC 2019	WTE DEC 2022	WTE DEC 2023	WTE APR 2024	WTE MAY 2024	WTE Change 2023	WTE Change 2024	WTE Change APR 2024	WTE Change Dec 2022 to MAY 2024	WTE Change Dec 2019 to MAY 2024	% WTE Change Dec 2022 to MAY 2024	No. MAY 2024
<b>Total Dublin North Central</b>	<b>2,973</b>	<b>3,122</b>	<b>3,145</b>	<b>3,136</b>	<b>3,126</b>	<b>+24</b>	<b>-20</b>	<b>-10</b>	<b>+4</b>	<b>+152</b>	<b>0.12%</b>	<b>3,690</b>





Dublin North Central	WTE DEC 2019	WTE DEC 2022	WTE DEC 2023	WTE APR 2024	WTE MAY 2024	WTE Change 2023	WTE Change 2024	WTE Change APR 2024	WTE Change Dec 2022 to MAY 2024	WTE Change Dec 2019 to MAY 2024	% WTE Change Dec 2022 to MAY 2024	No. MAY 2024
<b>Total Dublin North Central</b>	<b>2,973</b>	<b>3,122</b>	<b>3,145</b>	<b>3,136</b>	<b>3,126</b>	<b>+24</b>	<b>-20</b>	<b>-10</b>	<b>+4</b>	<b>+152</b>	<b>0.12%</b>	<b>3,690</b>
Consultants	35	36	42	42	42	+6	-0	-1	+6	+6	16.29%	45
Registrars	18	32	27	26	28	-5	+1	+2	-4	+9	-12.59%	29
SHO/ Interns	31	21	26	29	30	+5	+4	+1	+9	-2	44.15%	30
Medical/ Dental, other	16	17	16	15	15	-1	-0	+0	-1	-0	-6.57%	20
<b>Medical &amp; Dental</b>	<b>101</b>	<b>105</b>	<b>111</b>	<b>112</b>	<b>115</b>	<b>+6</b>	<b>+4</b>	<b>+3</b>	<b>+10</b>	<b>+14</b>	<b>9.33%</b>	<b>124</b>
Nurse/ Midwife Manager	168	197	195	204	200	-2	+5	-4	+3	+33	1.73%	217
Nurse/ Midwife Specialist & AN/MP	28	49	49	51	52	+0	+3	+1	+3	+24	5.48%	57
Staff Nurse/ Staff Midwife	407	400	374	384	382	-26	+8	-1	-18	-25	-4.49%	446
Public Health Nurse	59	50	49	49	48	-1	-1	-1	-2	-11	-4.39%	59
<i>Nursing/ Midwifery awaiting registration</i>		2				-2			-2		-100.00%	
<i>Post-registration Nurse/ Midwife Student</i>	3	4	4	4	4	+0	+0	+0	+0	+1	1.01%	4
<i>Pre-registration Nurse/ Midwife Intern</i>	7	8	6.5	7	7	-2	+0	+0	-2	-1	-18.75%	13
Nursing/ Midwifery Student	10	14	11	11	11	-3	+0	+0	-3	+1	-24.73%	17
Nursing/ Midwifery other	3	4	1	2	2	-3	+1	+0	-2	-1	-55.46%	2
<b>Nursing &amp; Midwifery</b>	<b>675</b>	<b>715</b>	<b>679</b>	<b>700</b>	<b>695</b>	<b>-36</b>	<b>+16</b>	<b>-4</b>	<b>-20</b>	<b>+20</b>	<b>-2.80%</b>	<b>798</b>
<i>Dietitians</i>	12	16	17.56	16	16	+2	-1	+1	+0	+4	2.55%	19
<i>Occupational Therapists</i>	80	112	118.15	109	110	+6	-8	+1	-2	+30	-1.93%	120
<i>Orthoptists</i>	5	3	4.2	3	3	+1	-1	+0	+0	-2	15.94%	4
<i>Physiotherapists</i>	78	85	82.19	71	73	-3	-9	+2	-12	-6	-13.98%	88
<i>Podiatrists &amp; Chiropodists</i>	1									-1	-100.00%	
<i>Speech &amp; Language Therapists</i>	56	74	66.53	68	69	-7	+2	+0	-5	+13	-6.88%	79
Therapy Professions	232	289	289	268	271	-0	-18	+3	-18	+38	-6.31%	310
Health Science/ Diagnostics	36	26	27	27	26	+1	-1	-1	+0	-10	1.74%	28
Social Care	530	608	606	597	597	-3	-9	-1	-12	+67	-1.90%	737
Social Workers	68	89	92	93	93	+3	+1	-0	+4	+25	4.89%	105
Psychologists	57	76	83	81	84	+7	+1	+3	+8	+27	10.15%	96
Pharmacy	16	19	20	19	19	+1	-1	-0	+0	+3	1.49%	24
H&SC, Other	39	36	39	42	42	+4	+2	-1	+6	+3	16.42%	48
<b>Health &amp; Social Care Professionals</b>	<b>979</b>	<b>1,143</b>	<b>1,155</b>	<b>1,128</b>	<b>1,132</b>	<b>+13</b>	<b>-24</b>	<b>+4</b>	<b>-11</b>	<b>+153</b>	<b>-0.97%</b>	<b>1,348</b>
Management (VIII & above)	55	39	36	37	37	-3	+1	+0	-2	-18	-4.79%	37
Administrative/ Supervisory (V to VII)	122	130	157	158	158	+27	+2	+0	+28	+36	21.93%	169
Clerical (III & IV)	227	201	222	216	214	+21	-8	-1	+13	-13	6.62%	248
<b>Management &amp; Administrative</b>	<b>403</b>	<b>369</b>	<b>415</b>	<b>411</b>	<b>409</b>	<b>+45</b>	<b>-5</b>	<b>-1</b>	<b>+40</b>	<b>+6</b>	<b>10.80%</b>	<b>454</b>
Support	206	154	141	141	137	-13	-4	-4	-17	-69	-10.95%	176
Maintenance/ Technical	18	19	20	20	20	+2	+0	+0	+2	+2	8.81%	22
<b>General Support</b>	<b>224</b>	<b>172</b>	<b>161</b>	<b>161</b>	<b>157</b>	<b>-11</b>	<b>-4</b>	<b>-4</b>	<b>-15</b>	<b>-67</b>	<b>-8.80%</b>	<b>198</b>
Health Care Assistants	464	480	510	504	500	+30	-10	-4	+21	+36	4.29%	631
Care, other	127	138	114	120	118	-24	+4	-2	-20	-10	-14.64%	137
<b>Patient &amp; Client Care</b>	<b>591</b>	<b>617</b>	<b>624</b>	<b>624</b>	<b>618</b>	<b>+6</b>	<b>-6</b>	<b>-7</b>	<b>+0</b>	<b>+27</b>	<b>0.07%</b>	<b>768</b>

Dublin North-West	WTE DEC 2019	WTE DEC 2022	WTE DEC 2023	WTE APR 2024	WTE MAY 2024	WTE Change 2023	WTE Change 2024	WTE Change APR 2024	WTE Change Dec 2022 to MAY 2024	WTE Change Dec 2019 to MAY 2024	% WTE Change Dec 2022 to MAY 2024	No. MAY 2024
<b>Total Dublin North-West</b>	<b>2,305</b>	<b>2,437</b>	<b>2,455</b>	<b>2,486</b>	<b>2,476</b>	<b>+19</b>	<b>+21</b>	<b>-10</b>	<b>+39</b>	<b>+171</b>	<b>1.61%</b>	<b>2,801</b>
Consultants	19	21	22	21	22	+1	+0	+1	+1	+3	4.09%	23
Registrars	12	24	19	19	18	-5	-1	-0	-5	+6	-22.44%	19
SHO/ Interns	24	14	25	26	26	+11	+1	-0	+12	+2	85.74%	27
Medical/ Dental, other	21	22	20	19	19	-2	-1	-1	-3	-3	-13.91%	24
<b>Medical &amp; Dental</b>	<b>77</b>	<b>80</b>	<b>86</b>	<b>85</b>	<b>85</b>	<b>+5</b>	<b>-1</b>	<b>-0</b>	<b>+5</b>	<b>+8</b>	<b>5.71%</b>	<b>93</b>
Nurse/ Midwife Manager	164	169	176	175	173	+7	-3	-1	+4	+10	2.46%	183



Dublin North-West	WTE DEC 2019	WTE DEC 2022	WTE DEC 2023	WTE APR 2024	WTE MAY 2024	WTE Change 2023	WTE Change 2024	WTE Change APR 2024	WTE Change Dec 2022 to MAY 2024	WTE Change Dec 2019 to MAY 2024	% WTE Change Dec 2022 to MAY 2024	No. MAY 2024
<b>Total Dublin North-West</b>	<b>2,305</b>	<b>2,437</b>	<b>2,455</b>	<b>2,486</b>	<b>2,476</b>	<b>+19</b>	<b>+21</b>	<b>-10</b>	<b>+39</b>	<b>+171</b>	<b>1.61%</b>	<b>2,801</b>
Nurse/ Midwife Specialist & AN/MP	41	52	50	49	49	-2	-1	+0	-3	+8	-5.43%	51
Staff Nurse/ Staff Midwife	475	504	483	491	489	-21	+6	-2	-15	+14	-2.93%	539
Public Health Nurse	50	55	54	55	52	-1	-3	-3	-4	+1	-6.84%	63
<i>Nursing/ Midwifery awaiting registration</i>	4	1				-1			-1	-4	-100.00%	
<i>Post-registration Nurse/ Midwife Student</i>	7	6	10	9	8	+4	-2	-1	+2	+1	31.48%	8
<i>Pre-registration Nurse/ Midwife Intern</i>	8		10	10	10	+10	+0	+0	+10	+3	-100.00%	20
Nursing/ Midwifery Student	19	7	20	19	18	+13	-2	-1	+11	-1	166.22%	28
Nursing/ Midwifery other	5	5	5	5	5	+0	+0	+0	+0	-0	10.57%	6
<b>Nursing &amp; Midwifery</b>	<b>755</b>	<b>792</b>	<b>789</b>	<b>794</b>	<b>786</b>	<b>-3</b>	<b>-3</b>	<b>-8</b>	<b>-6</b>	<b>+31</b>	<b>-0.71%</b>	<b>870</b>
<i>Dietitians</i>	7	10	12.73	12	12	+3	-1	-0	+2	+5	23.57%	13
<i>Occupational Therapists</i>	64	68	62.32	63	62	-6	-0	-1	-6	-2	-8.56%	65
<i>Physiotherapists</i>	40	44	40.75	38	38	-3	-3	-1	-6	-2	-14.42%	46
<i>Speech &amp; Language Therapists</i>	48	48	41.7	46	45	-6	+3	-1	-3	-3	-6.15%	50
Therapy Professions	159	170	158	160	157	-12	-1	-3	-13	-2	-7.57%	174
Health Science/ Diagnostics	0									-0	-100.00%	
Social Care	164	192	183	195	191	-9	+8	-5	-1	+27	-0.57%	230
Social Workers	31	40	37	37	37	-3	-0	-0	-3	+6	-7.36%	38
Psychologists	79	87	92	92	90	+5	-1	-2	+3	+11	3.77%	95
Pharmacy	8	7	10	9	9	+3	-1	+0	+2	+1	23.46%	12
H&SC, Other	25	20	24	20	22	+4	-2	+1	+1	-3	7.06%	23
<b>Health &amp; Social Care Professionals</b>	<b>465</b>	<b>515</b>	<b>503</b>	<b>513</b>	<b>505</b>	<b>-13</b>	<b>+2</b>	<b>-8</b>	<b>-10</b>	<b>+40</b>	<b>-2.03%</b>	<b>572</b>
Management (VIII & above)	17	20	25	23	22	+5	-2	-0	+3	+6	13.66%	23
Administrative/ Supervisory (V to VII)	53	90	95	94	93	+5	-3	-1	+2	+40	2.29%	98
Clerical (III & IV)	134	147	149	149	148	+2	-0	-0	+1	+15	0.95%	169
<b>Management &amp; Administrative</b>	<b>204</b>	<b>257</b>	<b>269</b>	<b>266</b>	<b>263</b>	<b>+12</b>	<b>-5</b>	<b>-2</b>	<b>+6</b>	<b>+60</b>	<b>2.40%</b>	<b>290</b>
Support	180	160	156	153	163	-4	+6	+9	+2	-17	1.48%	193
Maintenance/ Technical	11	10	9	9	9	-1	+0	+0	-1	-2	-9.83%	9
<b>General Support</b>	<b>191</b>	<b>170</b>	<b>165</b>	<b>162</b>	<b>172</b>	<b>-5</b>	<b>+6</b>	<b>+9</b>	<b>+1</b>	<b>-19</b>	<b>0.83%</b>	<b>202</b>
Health Care Assistants	544	557	580	604	603	+23	+23	-1	+46	+59	8.33%	704
Care, other	69	65	64	62	61	-0	-3	-0	-3	-8	-4.95%	70
<b>Patient &amp; Client Care</b>	<b>614</b>	<b>621</b>	<b>644</b>	<b>666</b>	<b>665</b>	<b>+23</b>	<b>+20</b>	<b>-1</b>	<b>+43</b>	<b>+51</b>	<b>6.95%</b>	<b>774</b>

Other CHO 9	WTE DEC 2019	WTE DEC 2022	WTE DEC 2023	WTE APR 2024	WTE MAY 2024	WTE Change 2023	WTE Change 2024	WTE Change APR 2024	WTE Change Dec 2022 to MAY 2024	WTE Change Dec 2019 to MAY 2024	% WTE Change Dec 2022 to MAY 2024	No. MAY 2024
<b>Total Other CHO 9</b>	<b>30</b>	<b>154</b>	<b>142</b>	<b>148</b>	<b>162</b>	<b>-12</b>	<b>+20</b>	<b>+14</b>	<b>+8</b>	<b>+132</b>	<b>5.15%</b>	<b>172</b>
Registrars		1				-1			-1		-100.00%	
Medical & Dental		1				-1			-1		-100.00%	
Nurse/ Midwife Manager		9	10	9	9	+1	-0	+1	+1	+9	8.56%	10
Nurse/ Midwife Specialist & AN/MP					4		+4	+4	+4	+4	-100.00%	4
Staff Nurse/ Staff Midwife		3	0		1	-3	+1	+1	-2	+1	-66.56%	1
Public Health Nurse		1				-1			-1		-100.00%	
<b>Nursing &amp; Midwifery</b>		<b>13</b>	<b>10</b>	<b>9</b>	<b>14</b>	<b>-3</b>	<b>+4</b>	<b>+5</b>	<b>+1</b>	<b>+14</b>	<b>11.25%</b>	<b>15</b>
<i>Dietitians</i>					1		+1	+1	+1	+1	-100.00%	1
<i>Occupational Therapists</i>					1		+1	+1	+1	+1	-100.00%	1
<i>Physiotherapists</i>					2		+2	+2	+2	+2	-100.00%	2
<i>Speech &amp; Language Therapists</i>					1		+1	+1	+1	+1	-100.00%	2
Therapy Professions					5		+5	+5	+5	+5	-100.00%	6
Social Workers		8	12	11	11	+4	-1	+0	+3	+11	38.99%	11
Pharmacy		1	2	2	2	+1	-0	-0	+1	+2	86.73%	2



Other CHO 9	WTE DEC 2019	WTE DEC 2022	WTE DEC 2023	WTE APR 2024	WTE MAY 2024	WTE Change 2023	WTE Change 2024	WTE Change APR 2024	WTE Change Dec 2022 to MAY 2024	WTE Change Dec 2019 to MAY 2024	% WTE Change Dec 2022 to MAY 2024	No. MAY 2024
<b>Total Other CHO 9</b>	<b>30</b>	<b>154</b>	<b>142</b>	<b>148</b>	<b>162</b>	<b>-12</b>	<b>+20</b>	<b>+14</b>	<b>+8</b>	<b>+132</b>	<b>5.15%</b>	<b>172</b>
Health & Social Care Professionals		9	14	13	18	+5	+4	+5	+9	+18	98.42%	19
Management (VIII & above)	7	20	16	17	18	-5	+2	+0	-2	+11	-12.23%	18
Administrative/ Supervisory (V to VII)	12	69	68	74	72	-1	+4	-2	+3	+60	4.64%	76
Clerical (III & IV)	11	32	32	32	33	-0	+1	+1	+1	+22	2.73%	36
<b>Management &amp; Administrative</b>	<b>30</b>	<b>121</b>	<b>116</b>	<b>123</b>	<b>123</b>	<b>-6</b>	<b>+7</b>	<b>-0</b>	<b>+2</b>	<b>+93</b>	<b>1.33%</b>	<b>130</b>
Support		5	2	2	1	-4	-0	-0	-4	+1	-72.89%	2
Maintenance/ Technical		2	1	2	2	-1	+1	+0	+0	+2	1.01%	2
<b>General Support</b>		<b>7</b>	<b>3</b>	<b>4</b>	<b>3</b>	<b>-5</b>	<b>+1</b>	<b>-0</b>	<b>-4</b>	<b>+3</b>	<b>-53.23%</b>	<b>4</b>
Health Care Assistants		3			4	-3	+4	+4	+1	+4	38.41%	4
Patient & Client Care		3			4	-3	+4	+4	+1	+4	38.41%	4



# Employment Report by Grade Group: MAY 2024

Employment by Grade Group MAY 2024	WTE DEC 2019	WTE DEC 2022	WTE DEC 2023	WTE APR 2024	WTE MAY 2024	WTE Change 2023	WTE Change 2024	WTE Change APR 2024	WTE Change Dec 2022 to MAY 2024	WTE Change Dec 2019 to MAY 2024	% WTE Change Dec 2022 to MAY 2024	No. MAY 2024
<b>Overall</b>	<b>6,582</b>	<b>7,230</b>	<b>7,342</b>	<b>7,584</b>	<b>7,553</b>	<b>+112</b>	<b>+210</b>	<b>-32</b>	<b>+323</b>	<b>+970</b>	<b>4.46%</b>	<b>8,700</b>
Consultant Dentistry			1	1	1	+1	+0	+0	+1	+1	-100.00%	1
Consultant Medicine	2	3	4	3	3	+1	-1	+0	+0	+1	0.00%	3
Consultant Paediatrics	1	1	2	2	2	+1	+0	+0	+1	+1	100.00%	2
Consultant Psychiatry	66	67	72	72	72	+5	-0	+0	+5	+6	7.55%	77
<b>Consultants</b>	<b>68</b>	<b>71</b>	<b>79</b>	<b>77</b>	<b>77</b>	<b>+8</b>	<b>-1</b>	<b>+0</b>	<b>+7</b>	<b>+9</b>	<b>9.79%</b>	<b>83</b>
Registrar	78	104	97	104	106	-8	+9	+2	+2	+28	1.59%	112
Senior Registrar	16	22	20	18	18	-2	-1	+0	-3	+2	-14.13%	19
Specialist Registrar	4	2	2	4	4	+0	+2	+0	+2	-1	75.88%	4
<b>Registrars</b>	<b>98</b>	<b>128</b>	<b>119</b>	<b>126</b>	<b>128</b>	<b>-9</b>	<b>+9</b>	<b>+2</b>	<b>+0</b>	<b>+30</b>	<b>0.10%</b>	<b>135</b>
Interns	2		1			+1	-1			-2	-100.00%	
Senior House Officer	64	52	80	86	88	+28	+8	+1	+36	+23	69.07%	89
<b>SHO/ Interns</b>	<b>66</b>	<b>52</b>	<b>81</b>	<b>86</b>	<b>88</b>	<b>+29</b>	<b>+7</b>	<b>+1</b>	<b>+36</b>	<b>+21</b>	<b>69.07%</b>	<b>89</b>
Dentists	31	34	34	33	32	+0	-2	-1	-2	+1	-4.98%	40
Other Medical	25	22	19	19	19	-3	-1	-0	-4	-7	-16.28%	27
<b>Medical/ Dental, other</b>	<b>57</b>	<b>56</b>	<b>54</b>	<b>52</b>	<b>51</b>	<b>-3</b>	<b>-3</b>	<b>-1</b>	<b>-5</b>	<b>-6</b>	<b>-9.45%</b>	<b>67</b>
<b>Medical &amp; Dental</b>	<b>290</b>	<b>306</b>		<b>341</b>	<b>344</b>	<b>+25</b>	<b>+12</b>	<b>+3</b>	<b>+37</b>	<b>+54</b>	<b>12.23%</b>	<b>374</b>
Clinical Nurse/ Midwife Manager 1	93	96	93	100	97	-3	+4	-3	+1	+4	1.42%	104
Clinical Nurse/ Midwife Manager 2	216	244	263	268	264	+18	+1	-4	+19	+48	7.91%	289
Clinical Nurse/ Midwife Manager 3	40	41	41	46	46	+0	+4	+0	+5	+6	11.25%	47
Director Nursing/Midwifery, Assistant	61	78	86	85	85	+8	-1	+0	+7	+23	8.68%	89
Director of Nursing/Midwifery	25	29	31	32	34	+2	+3	+2	+5	+9	15.48%	34
<b>Nurse/ Midwife Manager</b>	<b>435</b>	<b>488</b>	<b>513</b>	<b>530</b>	<b>525</b>	<b>+25</b>	<b>+12</b>	<b>-5</b>	<b>+37</b>	<b>+90</b>	<b>7.49%</b>	<b>563</b>
Advanced Nurse/ Midwife Practitioner	6	9	12	13	12	+3	+0	-1	+3	+6	34.01%	14
Adv. Nurse/ Midwife, Candidate	1	11	13	12	12	+1	-1	-0	+1	+11	4.43%	12
Clinical Nurse/ Midwife Specialist	78	129	135	169	171	+7	+35	+2	+42	+93	32.51%	192
<b>Nurse/ Midwife Specialist &amp; AN/MP</b>	<b>85</b>	<b>149</b>	<b>160</b>	<b>194</b>	<b>194</b>	<b>+11</b>	<b>+34</b>	<b>+0</b>	<b>+45</b>	<b>+109</b>	<b>30.47%</b>	<b>218</b>
Staff Nurse [Intellectual Disability]	421	316	325	330	330	+8	+5	+0	+14	-90	4.36%	389
Staff Nurse [Psychiatric]	371	363	319	322	319	-44	-0	-4	-44	-52	-12.23%	350
Staff Nurses [General/ Children's]	404	535	533	588	585	-2	+52	-2	+50	+181	9.43%	646
<b>Staff Nurse/ Staff Midwife</b>	<b>1,196</b>	<b>1,214</b>	<b>1,177</b>	<b>1,240</b>	<b>1,234</b>	<b>-37</b>	<b>+57</b>	<b>-5</b>	<b>+20</b>	<b>+39</b>	<b>1.64%</b>	<b>1,385</b>
Public Health Nurse	176	172	171	171	164	-1	-8	-7	-8	-12	-4.83%	200
<b>Public Health Nurse</b>	<b>176</b>	<b>172</b>	<b>171</b>	<b>171</b>	<b>164</b>	<b>-1</b>	<b>-8</b>	<b>-7</b>	<b>-8</b>	<b>-12</b>	<b>-4.83%</b>	<b>200</b>
Nursing/ Midwifery awaiting registration	11	16	6	1	1	-10	-5	+0	-15	-10	-93.66%	1
Post-registration Nurse/ Midwife Student	26	19	20	19	17	+1	-3	-2	-2	-9	-7.97%	18
Pre-registration Nurse/ Midwife Intern	18	8	17	42	42	+9	+25	-1	+34	+24	421.50%	84
<b>Nursing/ Midwifery Student</b>	<b>55</b>	<b>43</b>	<b>43</b>	<b>62</b>	<b>60</b>	<b>+0</b>	<b>+17</b>	<b>-2</b>	<b>+17</b>	<b>+5</b>	<b>40.95%</b>	<b>103</b>
Nursing Education/Clinical	20	20	17	21	20	-3	+2	-1	-0	-0	-2.19%	23
<b>Nursing/ Midwifery other</b>	<b>20</b>	<b>20</b>	<b>17</b>	<b>21</b>	<b>20</b>	<b>-3</b>	<b>+2</b>	<b>-1</b>	<b>-0</b>	<b>-0</b>	<b>-2.19%</b>	<b>23</b>
<b>Nursing &amp; Midwifery</b>	<b>1,966</b>	<b>2,087</b>		<b>2,217</b>	<b>2,197</b>	<b>-5</b>	<b>+115</b>	<b>-20</b>	<b>+111</b>	<b>+232</b>	<b>5.30%</b>	<b>2,492</b>
Dietitians	21	40	50	54	53	+9	+4	-1	+13	+32	31.75%	61
Occupational Therapists	182	229	224	219	218	-5	-5	-0	-10	+36	-4.42%	240
Orthoptists	5	3	4	3	3	+1	-1	+0	+0	-2	15.94%	4
Physiotherapists	144	158	158	152	151	+0	-7	-1	-7	+7	-4.42%	182
Podiatrists & Chiropodists	1	6	7	7	7	+1	-0	-0	+1	+6	15.67%	7
Speech & Language Therapists	133	152	138	140	139	-14	+1	-1	-12	+6	-8.19%	159
<b>Therapy Professions</b>	<b>486</b>	<b>587</b>	<b>580</b>	<b>574</b>	<b>571</b>	<b>-7</b>	<b>-9</b>	<b>-3</b>	<b>-15</b>	<b>+85</b>	<b>-2.62%</b>	<b>653</b>
Audiology	15	8	8	8	8	+0	-0	+0	+0	-7	0.89%	8
Clinical Engineering	16	13	14	14	13	+1	-1	-1	+0	-3	2.93%	14
Medical Science	4	4	4	4	4	+0	+0	+0	+0	+0	0.00%	4
Radiographers	1	1	1	1	1	+0	+0	+0	+0	-0	0.00%	2
<b>Health Science/ Diagnostics</b>	<b>37</b>	<b>26</b>	<b>27</b>	<b>27</b>	<b>26</b>	<b>+1</b>	<b>-1</b>	<b>-1</b>	<b>+0</b>	<b>-10</b>	<b>1.74%</b>	<b>28</b>
Social Care	695	804	790	795	790	-14	-1	-5	-15	+95	-1.81%	969
<b>Social Care</b>	<b>695</b>	<b>804</b>	<b>790</b>	<b>795</b>	<b>790</b>	<b>-14</b>	<b>-1</b>	<b>-5</b>	<b>-15</b>	<b>+95</b>	<b>-1.81%</b>	<b>969</b>
Social Workers	125	161	164	178	177	+3	+13	-1	+16	+51	9.97%	195

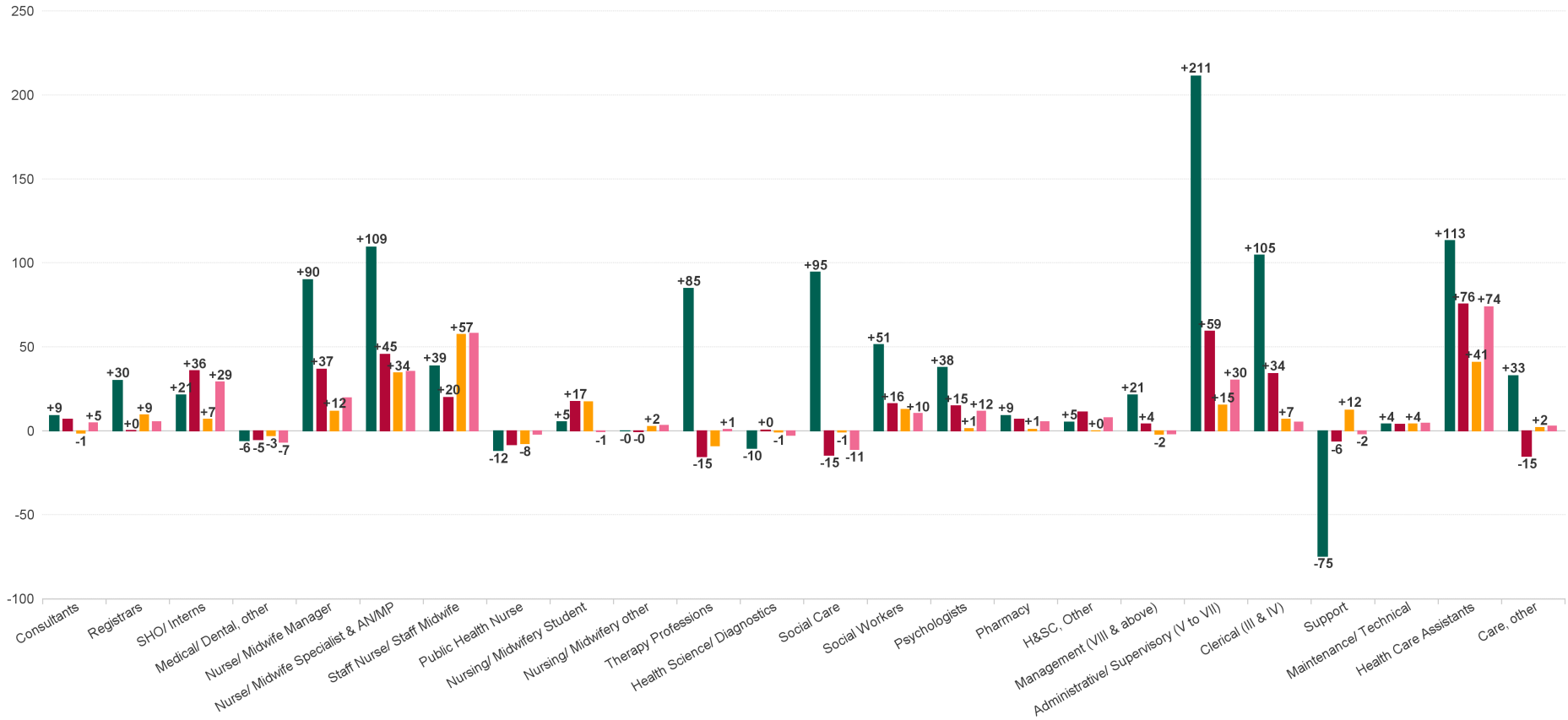


Employment by Grade Group MAY 2024	WTE DEC 2019	WTE DEC 2022	WTE DEC 2023	WTE APR 2024	WTE MAY 2024	WTE Change 2023	WTE Change 2024	WTE Change APR 2024	WTE Change Dec 2022 to MAY 2024	WTE Change Dec 2019 to MAY 2024	% WTE Change Dec 2022 to MAY 2024	No. MAY 2024
<b>Overall</b>	<b>6,582</b>	<b>7,230</b>	<b>7,342</b>	<b>7,584</b>	<b>7,553</b>	<b>+112</b>	<b>+210</b>	<b>-32</b>	<b>+323</b>	<b>+970</b>	<b>4.46%</b>	<b>8,700</b>
<b>Social Workers</b>	<b>125</b>	<b>161</b>	<b>164</b>	<b>178</b>	<b>177</b>	<b>+3</b>	<b>+13</b>	<b>-1</b>	<b>+16</b>	<b>+51</b>	<b>9.97%</b>	<b>195</b>
Psychologists	164	187	200	200	202	+14	+1	+2	+15	+38	7.94%	221
<b>Psychologists</b>	<b>164</b>	<b>187</b>	<b>200</b>	<b>200</b>	<b>202</b>	<b>+14</b>	<b>+1</b>	<b>+2</b>	<b>+15</b>	<b>+38</b>	<b>7.94%</b>	<b>221</b>
Pharmacists	22	23	28	28	28	+5	-0	-0	+5	+6	21.94%	36
Pharmacy Technicians	3	4	5	6	6	+1	+1	+0	+2	+3	45.30%	8
<b>Pharmacy</b>	<b>25</b>	<b>27</b>	<b>33</b>	<b>34</b>	<b>34</b>	<b>+6</b>	<b>+1</b>	<b>-0</b>	<b>+7</b>	<b>+9</b>	<b>25.46%</b>	<b>44</b>
Counsellor Therapists	42	36	40	40	39	+3	-1	-1	+3	-3	6.93%	41
Dental Hygienists	6	6	6	6	6	-0	+0	-0	-0	-0	-0.96%	8
Other Health & Social Care	20	17	23	23	23	+6	-1	-1	+6	+3	33.45%	27
Play Therapists/ Specialists	2	1	3	3	5	+2	+2	+2	+3	+2	202.01%	5
Vaccinators		4	4	4	4	+0	+0	+0	+0	+4	1.67%	4
<b>H&amp;SC, Other</b>	<b>71</b>	<b>64</b>	<b>76</b>	<b>76</b>	<b>76</b>	<b>+11</b>	<b>+0</b>	<b>-0</b>	<b>+11</b>	<b>+5</b>	<b>17.40%</b>	<b>85</b>
<b>Health &amp; Social Care Professionals</b>	<b>1,603</b>	<b>1,856</b>		<b>1,883</b>	<b>1,875</b>	<b>+15</b>	<b>+4</b>	<b>-8</b>	<b>+19</b>	<b>+272</b>	<b>1.05%</b>	<b>2,195</b>
Executive Management	11	13	14	14	14	+1	-0	-0	+1	+3	7.42%	14
Senior Management (VIII & GM)	69	84	89	88	87	+5	-2	-2	+3	+18	3.60%	88
<b>Management (VIII &amp; above)</b>	<b>79</b>	<b>97</b>	<b>103</b>	<b>102</b>	<b>101</b>	<b>+6</b>	<b>-2</b>	<b>-2</b>	<b>+4</b>	<b>+21</b>	<b>4.10%</b>	<b>102</b>
Middle Management (V-VII)	199	351	396	412	411	+45	+15	-1	+60	+212	17.01%	436
Other Administrative	9	9	8	8	8	-1	+0	+0	-1	-1	-6.54%	8
<b>Administrative/ Supervisory (V to VII)</b>	<b>208</b>	<b>360</b>	<b>404</b>	<b>420</b>	<b>419</b>	<b>+44</b>	<b>+15</b>	<b>-1</b>	<b>+59</b>	<b>+211</b>	<b>16.45%</b>	<b>444</b>
General Administrative (III & IV)	451	522	549	559	556	+27	+7	-3	+34	+105	6.51%	641
<b>Clerical (III &amp; IV)</b>	<b>451</b>	<b>522</b>	<b>549</b>	<b>559</b>	<b>556</b>	<b>+27</b>	<b>+7</b>	<b>-3</b>	<b>+34</b>	<b>+105</b>	<b>6.51%</b>	<b>641</b>
<b>Management &amp; Administrative</b>	<b>739</b>	<b>979</b>		<b>1,081</b>	<b>1,076</b>	<b>+77</b>	<b>+20</b>	<b>-5</b>	<b>+97</b>	<b>+337</b>	<b>9.93%</b>	<b>1,187</b>
Catering	61	62	65	66	65	+3	+0	-0	+3	+4	5.37%	76
Household Services	220	208	192	199	206	-16	+15	+8	-2	-14	-0.78%	266
Other Support	95	42	34	33	31	-8	-3	-2	-11	-63	-25.40%	40
Portering	76	71	74	75	74	+2	+0	-1	+3	-1	4.00%	78
<b>Support</b>	<b>452</b>	<b>383</b>	<b>365</b>	<b>372</b>	<b>377</b>	<b>-18</b>	<b>+12</b>	<b>+5</b>	<b>-6</b>	<b>-75</b>	<b>-1.58%</b>	<b>460</b>
Maintenance	33	31	29	31	31	-1	+2	+0	+1	-2	2.06%	33
Technical Services	2	5	6	8	8	+1	+2	+0	+3	+6	63.93%	8
<b>Maintenance/ Technical</b>	<b>35</b>	<b>36</b>	<b>35</b>	<b>39</b>	<b>39</b>	<b>-0</b>	<b>+4</b>	<b>+0</b>	<b>+4</b>	<b>+4</b>	<b>10.55%</b>	<b>41</b>
<b>General Support</b>	<b>487</b>	<b>419</b>		<b>412</b>	<b>416</b>	<b>-19</b>	<b>+16</b>	<b>+5</b>	<b>-2</b>	<b>-71</b>	<b>-0.55%</b>	<b>501</b>
Attendant/ Aide	102	50	54	53	45	+4	-8	-8	-5	-57	-9.12%	57
Health Care Assistant/ Care Assistant	1,163	1,224	1,241	1,276	1,279	+18	+38	+4	+56	+116	4.56%	1,534
Health & Social Care Assistants	12	42	55	66	66	+13	+11	+0	+24	+54	57.87%	71
<b>Health Care Assistants</b>	<b>1,278</b>	<b>1,315</b>	<b>1,350</b>	<b>1,394</b>	<b>1,391</b>	<b>+35</b>	<b>+41</b>	<b>-3</b>	<b>+76</b>	<b>+113</b>	<b>5.74%</b>	<b>1,662</b>
Health Promotion		30	33	32	32	+3	-1	+0	+2	+32	6.69%	34
Home Care Services	13	8	5	6	5	-3	+0	-1	-3	-8	-36.63%	5
Other Care Grades	136	172	168	170	167	-4	-1	-3	-5	+32	-2.68%	190
Pastoral Care	3	2	2	4	4	+0	+3	+0	+3	+2	127.16%	7
Workshop Services	69	57	44	44	45	-13	+0	+0	-12	-25	-21.46%	53
<b>Care, other</b>	<b>221</b>	<b>269</b>	<b>252</b>	<b>256</b>	<b>254</b>	<b>-17</b>	<b>+2</b>	<b>-3</b>	<b>-15</b>	<b>+33</b>	<b>-5.64%</b>	<b>289</b>
<b>Patient &amp; Client Care</b>	<b>1,499</b>	<b>1,584</b>		<b>1,650</b>	<b>1,644</b>	<b>+18</b>	<b>+43</b>	<b>-6</b>	<b>+60</b>	<b>+146</b>	<b>3.81%</b>	<b>1,951</b>



# WTE Change by Staff Group

■ WTE change since DEC 2019 
 ■ WTE change since DEC 2022 
 ■ WTE change since DEC 2023 
 ■ WTE change since MAY 2023



## Employment Report by WTE, Headcount, Gender, Full-Time / Part-Time etc. MAY 2024

Demographic Grade Group MAY 2024	WTE MAY 2024	No. MAY 2024	WTE : No	Number Male %	Number Female %	Male WTE : No.	Female WTE : No	Perm Count %	Perm Count Male %	Perm Count Female %	Fulltime Count %	Part time Count %	FT Count Male %	FT Count Female %
<b>Total</b>	<b>7,553</b>	<b>8,700</b>	<b>1:0.9</b>	<b>18.06%</b>	<b>81.94%</b>	<b>1:0.9</b>	<b>1:0.9</b>	<b>88.49%</b>	<b>15.84%</b>	<b>72.66%</b>	<b>67.47%</b>	<b>32.53%</b>	<b>84.02%</b>	<b>63.82%</b>
Consultant Psychiatry	72.07	77	1:0.9	35.06%	64.94%	1:1	1:0.9	87.01%	28.57%	58.44%	84.42%	15.58%	96.30%	78.00%
Senior House Officer	87.53	89	1:1	25.84%	74.16%	1:1	1:1	1.12%		1.12%	98.88%	1.12%	100.00%	98.48%
Specialist Registrar	3.5	4	1:0.9		100.00%	1:	1:0.9				75.00%	25.00%		75.00%
Consultant Paediatrics	2	2	1:1	50.00%	50.00%	1:1	1:1	50.00%		50.00%	100.00%		100.00%	100.00%
Registrar	106.07	112	1:0.9	26.79%	73.21%	1:1	1:0.9	5.36%	2.68%	2.68%	97.32%	2.68%	96.67%	97.56%
Senior Registrar	18.48	19	1:1	26.32%	73.68%	1:1	1:1				100.00%		100.00%	100.00%
Consultant Dentistry	0.84	1	1:0.8		100.00%	1:	1:0.8	100.00%		100.00%		100.00%		
Consultant Medicine	2.5	3	1:0.8		100.00%	1:	1:0.8	100.00%		100.00%	66.67%	33.33%		66.67%
Dentists	32.26	40	1:0.8	17.50%	82.50%	1:1	1:0.8	95.00%	17.50%	77.50%	65.00%	35.00%	85.71%	60.61%
Other Medical	18.62	27	1:0.7	18.52%	81.48%	1:0.5	1:0.7	96.30%	18.52%	77.78%	44.44%	55.56%	20.00%	50.00%
<b>Medical &amp; Dental</b>	<b>344</b>	<b>374</b>	<b>1:0.9</b>	<b>26.20%</b>	<b>73.80%</b>	<b>1:1</b>	<b>1:0.9</b>	<b>38.24%</b>	<b>9.89%</b>	<b>28.34%</b>	<b>87.17%</b>	<b>12.83%</b>	<b>92.86%</b>	<b>85.14%</b>
Clinical Nurse/ Midwife Manager 2	263.81	289	1:0.9	21.45%	78.55%	1:1	1:0.9	96.19%	21.11%	75.09%	82.70%	17.30%	96.77%	78.85%
Director of Nursing/Midwifery	33.87	34	1:1	20.59%	79.41%	1:1	1:1	97.06%	20.59%	76.47%	97.06%	2.94%	100.00%	96.30%
Public Health Nurse	163.71	200	1:0.8	1.50%	98.50%	1:1	1:0.8	99.00%	1.50%	97.50%	72.00%	28.00%	100.00%	71.57%
Staff Nurse [Intellectual Disability]	330.2	389	1:0.8	13.37%	86.63%	1:0.9	1:0.8	92.29%	12.60%	79.69%	63.24%	36.76%	84.62%	59.94%
Staff Nurse [Psychiatric]	318.69	350	1:0.9	23.43%	76.57%	1:0.9	1:0.9	94.86%	20.86%	74.00%	86.00%	14.00%	90.24%	84.70%
Staff Nurses [General/ Children's]	585.35	646	1:0.9	13.93%	86.07%	1:1	1:0.9	96.28%	13.31%	82.97%	78.02%	21.98%	93.33%	75.54%
Clinical Nurse/ Midwife Manager 1	97.05	104	1:0.9	9.62%	90.38%	1:1	1:0.9	96.15%	8.65%	87.50%	75.96%	24.04%	80.00%	75.53%
Clinical Nurse/ Midwife Manager 3	45.68	47	1:1	23.40%	76.60%	1:1	1:1	93.62%	23.40%	70.21%	93.62%	6.38%	100.00%	91.67%
Clinical Nurse/ Midwife Specialist	170.7	192	1:0.9	9.38%	90.63%	1:1	1:0.9	98.96%	9.38%	89.58%	73.96%	26.04%	94.44%	71.84%
Post-registration Nurse/ Midwife Student	17.31	18	1:1		100.00%	1:	1:1	22.22%		22.22%	94.44%	5.56%		94.44%
Advanced Nurse/ Midwife Practitioner	11.86	14	1:0.8		100.00%	1:	1:0.8	100.00%		100.00%	92.86%	7.14%		92.86%
Director Nursing/Midwifery, Assistant	84.67	89	1:1	13.48%	86.52%	1:1	1:0.9	98.88%	12.36%	86.52%	89.89%	10.11%	100.00%	88.31%
Nursing Education/Clinical	19.69	23	1:0.9	4.35%	95.65%	1:1	1:0.8	100.00%	4.35%	95.65%	69.57%	30.43%	100.00%	68.18%
Adv. Nurse/ Midwife, Candidate	11.78	12	1:1	8.33%	91.67%	1:1	1:1	91.67%	8.33%	83.33%	100.00%		100.00%	100.00%
Nursing/ Midwifery awaiting registration	1	1	1:1		100.00%	1:	1:1	100.00%		100.00%	100.00%			100.00%
Pre-registration Nurse/ Midwife Intern	41.72	84	1:0.5	16.67%	83.33%	1:0.5	1:0.5				76.19%	23.81%	100.00%	71.43%
<b>Nursing &amp; Midwifery</b>	<b>2,197</b>	<b>2,492</b>	<b>1:0.9</b>	<b>14.57%</b>	<b>85.43%</b>	<b>1:0.9</b>	<b>1:0.9</b>	<b>92.17%</b>	<b>13.24%</b>	<b>78.93%</b>	<b>77.65%</b>	<b>22.35%</b>	<b>92.56%</b>	<b>75.11%</b>



Demographic Grade Group MAY 2024	WTE MAY 2024	No. MAY 2024	WTE : No	Number Male %	Number Female %	Male WTE : No.	Female WTE : No	Perm Count %	Perm Count Male %	Perm Count Female %	Fulltime Count %	Part time Count %	FT Count Male %	FT Count Female %
<b>Total</b>	<b>7,553</b>	<b>8,700</b>	<b>1:0.9</b>	<b>18.06%</b>	<b>81.94%</b>	<b>1:0.9</b>	<b>1:0.9</b>	<b>88.49%</b>	<b>15.84%</b>	<b>72.66%</b>	<b>67.47%</b>	<b>32.53%</b>	<b>84.02%</b>	<b>63.82%</b>
Orthoptists	3.2	4	1:0.8	25.00%	75.00%	1:1	1:0.7	75.00%	25.00%	50.00%	75.00%	25.00%	100.00%	66.67%
Other Health & Social Care	22.74	27	1:0.8	14.81%	85.19%	1:0.8	1:0.9	92.59%	11.11%	81.48%	62.96%	37.04%	75.00%	60.87%
Pharmacists	27.84	36	1:0.8	16.67%	83.33%	1:0.9	1:0.8	83.33%	13.89%	69.44%	55.56%	44.44%	66.67%	53.33%
Psychologists	201.66	221	1:0.9	13.57%	86.43%	1:1	1:0.9	71.04%	10.86%	60.18%	81.00%	19.00%	96.67%	78.53%
Social Care	789.66	969	1:0.8	12.07%	87.93%	1:0.9	1:0.8	91.23%	11.15%	80.08%	37.46%	62.54%	50.43%	35.68%
Counsellor Therapists	38.56	41	1:0.9	31.71%	68.29%	1:1	1:0.9	97.56%	29.27%	68.29%	87.80%	12.20%	92.31%	85.71%
Dietitians	53.16	61	1:0.9	4.92%	95.08%	1:1	1:0.9	95.08%	4.92%	90.16%	73.77%	26.23%	100.00%	72.41%
Medical Science	4	4	1:1	50.00%	50.00%	1:1	1:1	25.00%	25.00%		100.00%		100.00%	100.00%
Occupational Therapists	218.44	240	1:0.9	10.00%	90.00%	1:0.9	1:0.9	99.58%	10.00%	89.58%	83.33%	16.67%	100.00%	81.48%
Social Workers	176.76	195	1:0.9	20.00%	80.00%	1:1	1:0.9	96.41%	19.49%	76.92%	75.90%	24.10%	97.44%	70.51%
Speech & Language Therapists	139.16	159	1:0.9	1.26%	98.74%	1:1	1:0.9	96.86%	1.26%	95.60%	77.36%	22.64%	100.00%	77.07%
Dental Hygienists	6.18	8	1:0.8		100.00%	1:	1:0.8	100.00%		100.00%	25.00%	75.00%		25.00%
Pharmacy Technicians	5.87	8	1:0.7		100.00%	1:	1:0.7	87.50%		87.50%	50.00%	50.00%		50.00%
Physiotherapists	150.77	182	1:0.8	17.03%	82.97%	1:0.9	1:0.8	96.15%	16.48%	79.67%	60.99%	39.01%	77.42%	57.62%
Play Therapists/ Specialists	4.5	5	1:0.9		100.00%	1:	1:0.9	100.00%		100.00%	60.00%	40.00%		60.00%
Podiatrists & Chiropodists	6.57	7	1:0.9		100.00%	1:	1:0.9	100.00%		100.00%	71.43%	28.57%		71.43%
Radiographers	1	2	1:0.5		100.00%	1:	1:0.5	100.00%		100.00%		100.00%		
Audiology	7.96	8	1:1	12.50%	87.50%	1:1	1:1	100.00%	12.50%	87.50%	100.00%		100.00%	100.00%
Clinical Engineering	13.33	14	1:1	100.00%		1:1	1:	100.00%	100.00%		100.00%		100.00%	
Vaccinators	3.66	4	1:0.9		100.00%	1:	1:0.9					100.00%		
<b>Health &amp; Social Care Professionals</b>	<b>1,875</b>	<b>2,195</b>	<b>1:0.9</b>	<b>13.08%</b>	<b>86.92%</b>	<b>1:0.9</b>	<b>1:0.8</b>	<b>91.34%</b>	<b>12.12%</b>	<b>79.23%</b>	<b>58.54%</b>	<b>41.46%</b>	<b>75.26%</b>	<b>56.03%</b>
General Administrative (III & IV)	556.04	641	1:0.9	13.10%	86.90%	1:1	1:0.9	91.11%	11.70%	79.41%	68.17%	31.83%	92.86%	64.45%
Middle Management (V-VII)	411.12	436	1:0.9	18.58%	81.42%	1:1	1:0.9	92.89%	16.74%	76.15%	85.78%	14.22%	97.53%	83.10%
Executive Management	13.76	14	1:1	28.57%	71.43%	1:1	1:1	92.86%	21.43%	71.43%	100.00%		100.00%	100.00%
Other Administrative	8	8	1:1	12.50%	87.50%	1:1	1:1	87.50%	12.50%	75.00%	100.00%		100.00%	100.00%
Senior Management (VIII & GM)	86.95	88	1:1	29.55%	70.45%	1:1	1:1	93.18%	28.41%	64.77%	97.73%	2.27%	100.00%	96.77%
<b>Management &amp; Administrative</b>	<b>1,076</b>	<b>1,187</b>	<b>1:0.9</b>	<b>16.51%</b>	<b>83.49%</b>	<b>1:1</b>	<b>1:0.9</b>	<b>91.91%</b>	<b>14.91%</b>	<b>77.00%</b>	<b>77.42%</b>	<b>22.58%</b>	<b>95.92%</b>	<b>73.76%</b>
Catering	65.29	76	1:0.9	38.16%	61.84%	1:1	1:0.8	97.37%	38.16%	59.21%	65.79%	34.21%	93.10%	48.94%
Household Services	206.28	266	1:0.8	13.91%	86.09%	1:0.9	1:0.8	93.23%	12.78%	80.45%	40.98%	59.02%	83.78%	34.06%
Other Support	31.22	40	1:0.8	70.00%	30.00%	1:0.8	1:0.7	82.50%	52.50%	30.00%	30.00%	70.00%	35.71%	16.67%
Portering	74.3	78	1:1	93.59%	6.41%	1:1	1:0.7	85.90%	80.77%	5.13%	87.18%	12.82%	90.41%	40.00%
Technical Services	8	8	1:1	87.50%	12.50%	1:1	1:1	75.00%	62.50%	12.50%	75.00%	25.00%	71.43%	100.00%
Maintenance	31.28	33	1:0.9	93.94%	6.06%	1:0.9	1:1	100.00%	93.94%	6.06%	60.61%	39.39%	61.29%	50.00%





Demographic Grade Group MAY 2024	WTE MAY 2024	No. MAY 2024	WTE : No	Number Male %	Number Female %	Male WTE : No.	Female WTE : No	Perm Count %	Perm Count Male %	Perm Count Female %	Fulltime Count %	Part time Count %	FT Count Male %	FT Count Female %
<b>Total</b>	<b>7,553</b>	<b>8,700</b>	<b>1:0.9</b>	<b>18.06%</b>	<b>81.94%</b>	<b>1:0.9</b>	<b>1:0.9</b>	<b>88.49%</b>	<b>15.84%</b>	<b>72.66%</b>	<b>67.47%</b>	<b>32.53%</b>	<b>84.02%</b>	<b>63.82%</b>
<b>General Support</b>	<b>416</b>	<b>501</b>	<b>1:0.8</b>	<b>40.92%</b>	<b>59.08%</b>	<b>1:0.9</b>	<b>1:0.8</b>	<b>92.02%</b>	<b>36.53%</b>	<b>55.49%</b>	<b>52.89%</b>	<b>47.11%</b>	<b>77.07%</b>	<b>36.15%</b>
Attendant/ Aide	45.35	57	1:0.8	31.58%	68.42%	1:0.9	1:0.8	92.98%	29.82%	63.16%	38.60%	61.40%	61.11%	28.21%
Health Care Assistant/ Care Assistant	1,279.41	1,534	1:0.8	19.30%	80.70%	1:0.9	1:0.8	87.94%	18.51%	69.43%	56.19%	43.81%	79.39%	50.65%
Other Care Grades	167.45	190	1:0.9	37.37%	62.63%	1:0.9	1:0.9	92.63%	31.58%	61.05%	70.00%	30.00%	76.06%	66.39%
Health & Social Care Assistants	66.18	71	1:0.9	23.94%	76.06%	1:0.9	1:0.9	56.34%	11.27%	45.07%	80.28%	19.72%	94.12%	75.93%
Workshop Services	44.53	53	1:0.8	18.87%	81.13%	1:0.9	1:0.8	71.70%	11.32%	60.38%	49.06%	50.94%	60.00%	46.51%
Health Promotion	32.07	34	1:0.9	20.59%	79.41%	1:1	1:0.9	100.00%	20.59%	79.41%	94.12%	5.88%	100.00%	92.59%
Pastoral Care	4.48	7	1:0.6	28.57%	71.43%	1:0.6	1:0.7	100.00%	28.57%	71.43%	42.86%	57.14%	50.00%	40.00%
Home Care Services	5	5	1:1	20.00%	80.00%	1:1	1:1	100.00%	20.00%	80.00%	100.00%		100.00%	100.00%
<b>Patient &amp; Client Care</b>	<b>1,644</b>	<b>1,951</b>	<b>1:0.8</b>	<b>21.63%</b>	<b>78.37%</b>	<b>1:0.9</b>	<b>1:0.8</b>	<b>87.24%</b>	<b>19.73%</b>	<b>67.50%</b>	<b>58.43%</b>	<b>41.57%</b>	<b>78.44%</b>	<b>52.91%</b>



CHO 9 MAY 2024

Demographic Hospital MAY 2024	WTE MAY 2024	No. MAY 2024	WTE : No	Number Male %	Number Female %	Male WTE : No.	Female WTE : No	Perm Count %	Perm Count Male %	Perm Count Female %	Fulltime Count %	Part time Count %	FT Count Male %	FT Count Female %
<b>Total</b>	<b>7,553</b>	<b>8,700</b>	<b>1:0.9</b>	<b>18.06%</b>	<b>81.94%</b>	<b>1:0.9</b>	<b>1:0.9</b>	<b>88.49%</b>	<b>15.84%</b>	<b>72.66%</b>	<b>67.47%</b>	<b>32.53%</b>	<b>84.02%</b>	<b>63.82%</b>
Dublin North	1,789	2,037	1:0.9	20.62%	79.38%	1:1	1:0.9	87.19%	18.26%	68.92%	78.35%	21.65%	95.71%	73.84%
Dublin North Central	3,126	3,690	1:0.8	19.38%	80.62%	1:0.9	1:0.8	89.24%	16.69%	72.55%	57.21%	42.79%	73.01%	53.41%
Dublin North-West	2,476	2,801	1:0.9	14.32%	85.68%	1:0.9	1:0.9	87.97%	12.75%	75.22%	71.62%	28.38%	90.27%	68.50%
Other CHO 9	162	172	1:0.9	20.35%	79.65%	1:1	1:0.9	96.51%	19.19%	77.33%	91.28%	8.72%	97.14%	89.78%



Month-on-Month Summary

WTE change since APR 2024		% WTE change since APR 2024	Overall	Consultants	Registrars	SHO/ Interns	Medical/ Dental/ other	Medical & Dental	Nurse/ Midwife Manager	Nurse/ Midwife Specialist & ANMP	Staff Nurse/ Staff Midwife	Public Health Nurse	Nursing/ Midwifery Student	Nursing/ Midwifery other	Nursing & Midwifery	Therapy Professionals	Health Scientist/ Diagnostics	Social Care	Social Workers	Psychologists	Pharmacy	H&SC Other	Health & Social Care Professionals	Management (VII & above)	Administrative / Supervisory (V to VI)	Clinical (II & IV)	Management & Administrative	Support	Maintenance/ Technical	General Support	Health Care Assistants	Care, other	Patients & Client Care
Overall		-6.42%	-31.5	+9.5	+2.3	+1.1	-6.8	+3.1	-4.7	+8.4	-5.5	-7.2	-2.2	-0.8	-29.9	-3.0	-0.6	-5.3	-6.9	+2.1	-0.3	-0.1	-6.1	-1.7	-1.1	-2.5	-5.2	+4.7	+0.0	+4.7	-3.5	-2.8	-6.9
Dublin North-West	46006	-0.42%	-10.4	+0.9	-0.4	-0.3	-0.7	-0.4	-1.1	+0.3	-2.2	-3.5	-1.2	+0.0	-7.7	-2.8		-4.7	-0.1	-1.6	+0.0	+1.0	-8.2	-0.4	-1.5	-0.3	-2.2	+9.4	+0.0	+9.4	-0.8	-0.4	-1.2
Dublin North Central	46007	-0.31%	-9.8	-0.6	+2.4	+0.9	+0.1	+2.7	-3.6	+1.2	-1.4	-0.8	+0.0	+0.0	-4.5	+3.0	-0.6	-0.6	-0.2	+3.0	-0.2	-0.7	+3.7	+0.0	+0.1	-1.4	-1.4	-3.9	+0.0	-3.9	-4.2	-2.4	-6.5
Dublin North	46008	-1.38%	-25.0	+0.1	+0.3	+0.5	-0.1	+0.8	-0.7	-4.7	-3.0	-3.0	-1.0	-0.8	-13.2	-8.0		+0.0	-0.6	+0.7	+0.0	-0.5	-6.3	-1.6	+2.2	-1.9	-1.4	-0.7	+0.0	-0.7	-2.5	+0.2	-2.4
Other CHO 9	46042	+9.23%	+13.7						+0.7	+3.7	+1.0				+5.4	+4.8			+0.0		-0.2		+4.7	+0.4	-1.8	+1.2	-0.3	-0.0	+0.0	-0.0	+4.0		+4.0



CHO 9 Employment Report: MAY 2024

Year-to-Date Summary

WTE change since DEC 2023	% WTE change since DEC 2023	Overall	Consultants	Registrars	SHO/ Interns	Medical/ Dental/ other	Medical & Dental	Nurse/ Midwife Manager	Nurse/ Midwife Specialist & AN/MP	Staff Nurse/ Staff Midwife	Public Health Nurse	Nursing/ Midwifery Student	Nursing/ Midwifery other	Nursing & Midwifery	Therapy Professions	Health Sciences/ Diagnostics	Social Care	Social Workers	Psychologists	Pharmacy	H&SC, Other	Health & Social Care Professionals	Management (VIII & above)	Administrative / Supervisory (V to VII)	Clerical (III & IV)	Management & Administrative	Support	Maintenance/ Technical	General Support	Health Care Assistants	Care, other	Patient & Client Care
Overall	+2.87%	+210	-1	+9	+7	-3	+12	+12	+34	+57	-8	+17	+2	+115	-9	-1	-1	+13	+1	+1	+0	+4	-2	+15	+7	+20	+12	+4	+16	+41	+2	+43
Dublin North-West	+0.84%	+21	+0	-1	+1	-1	-1	-3	-1	+6	-3	-2	+0	-3	-1		+8	-0	-1	-1	-2	+2	-2	-3	-0	-5	+6	+0	+6	+23	-3	+20
Dublin North Central	-0.63%	-20	-0	+1	+4	-0	+4	+5	+3	+8	-1	+0	+1	+16	-18	-1	-9	+1	+1	-1	+2	-24	+1	+2	-8	-5	-4	+0	-4	-10	+4	-6
Dublin North	+11.84%	+189	-1	+9	+2	-2	+9	+10	+29	+43	-4	+19	+1	+98	+5		+0	+13	+1	+3	-0	+22	-3	+12	+14	+24	+10	+3	+13	+23	+1	+24
Other CHO 9	+14.05%	+20						-0	+4	+1				+4	+5			-1		-0		+4	+2	+4	+1	+7	-0	+1	+4		+4	



CHO 9 Employment Report: MAY 2024

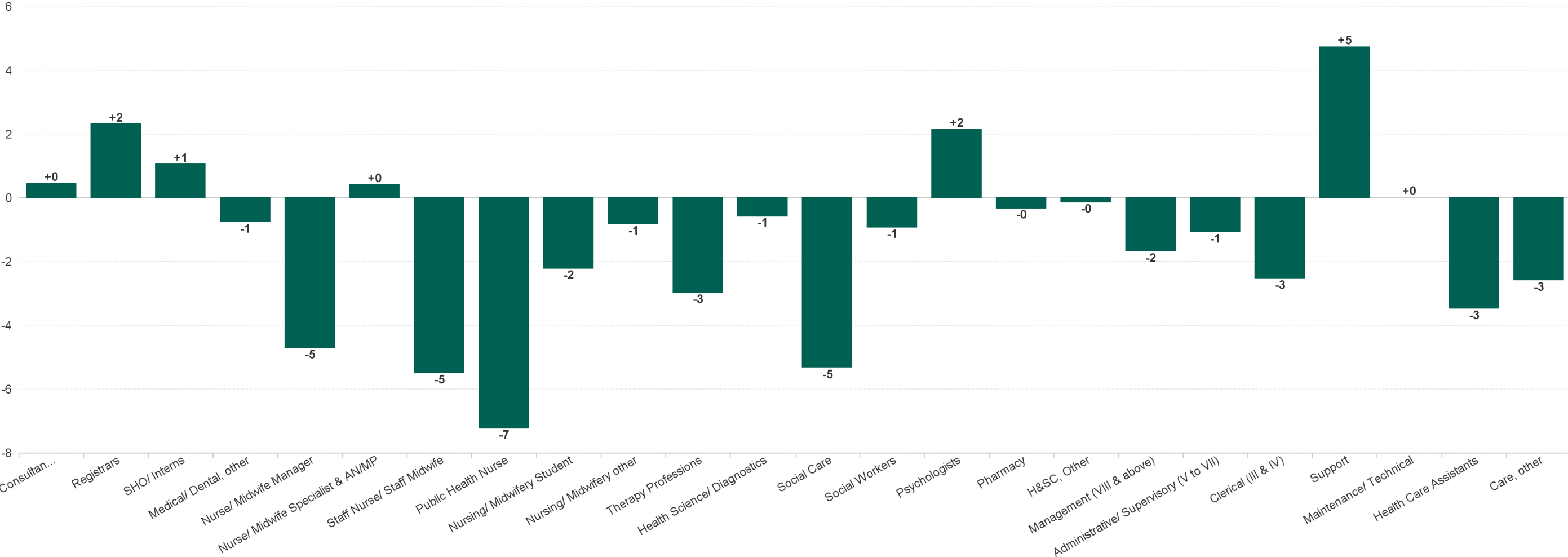
Year-on-Year Summary

WTE change since MAY 2023	% WTE change since MAY 2023	Overall	Consultants	Registrars	SHO/ Interns	Medical/ Dental, other	Medical & Dental	Nurse/ Midwife Manager	Nurse/ Midwife Specialist & AN/MP	Staff Nurse/ Staff Midwife	Public Health Nurse	Nursing/ Midwifery Student	Nursing/ Midwifery other	Nursing & Midwifery	Therapy Professions	Health Science/ Diagnostics	Social Care	Social Workers	Psychologists	Pharmacy	H&SC, Other	Health & Social Care Professionals	Management (VIII & above)	Administrative / Supervisory (V to VII)	Clerical (III & IV)	Management & Administrative	Support	Maintenance/ Technical	General Support	Health Care Assistants	Care, other	Patient & Client Care
Overall	+3.85%	+280	+5	+5	+29	-7	+32	+19	+35	+58	-2	-1	+3	+113	+1	-3	-11	+10	+12	+5	+8	+22	-2	+30	+5	+34	-2	+4	+3	+74	+3	+77
Dublin North-West	+1.35%	+33	+2	-2	+4	-5	-0	-5	-2	-1	-1	+1	+0	-8	+0		+3	-1	-0	+1	-1	+2	+2	+0	-2	-0	-2	-1	-3	+43	-1	+42
Dublin North Central	+0.32%	+10	+4	-7	+11	-1	+7	+4	+1	+19	-0	-3	+1	+23	-12	-3	-13	-2	+8	+0	+4	-17	-4	+8	-3	+1	-10	+2	-8	+12	-8	+5
Dublin North	+13.90%	+218	-2	+14	+14	-1	+26	+20	+32	+39	+1	+1	+2	+95	+8		-1	+11	+4	+3	+4	+29	+2	+18	+10	+29	+10	+3	+13	+14	+12	+26
Other CHO 9	+13.14%	+19						-0	+4	+1	-1			+4	+5			+2		+1		+8	-1	+4	+0	+4	-0	+0	-0	+4		+4



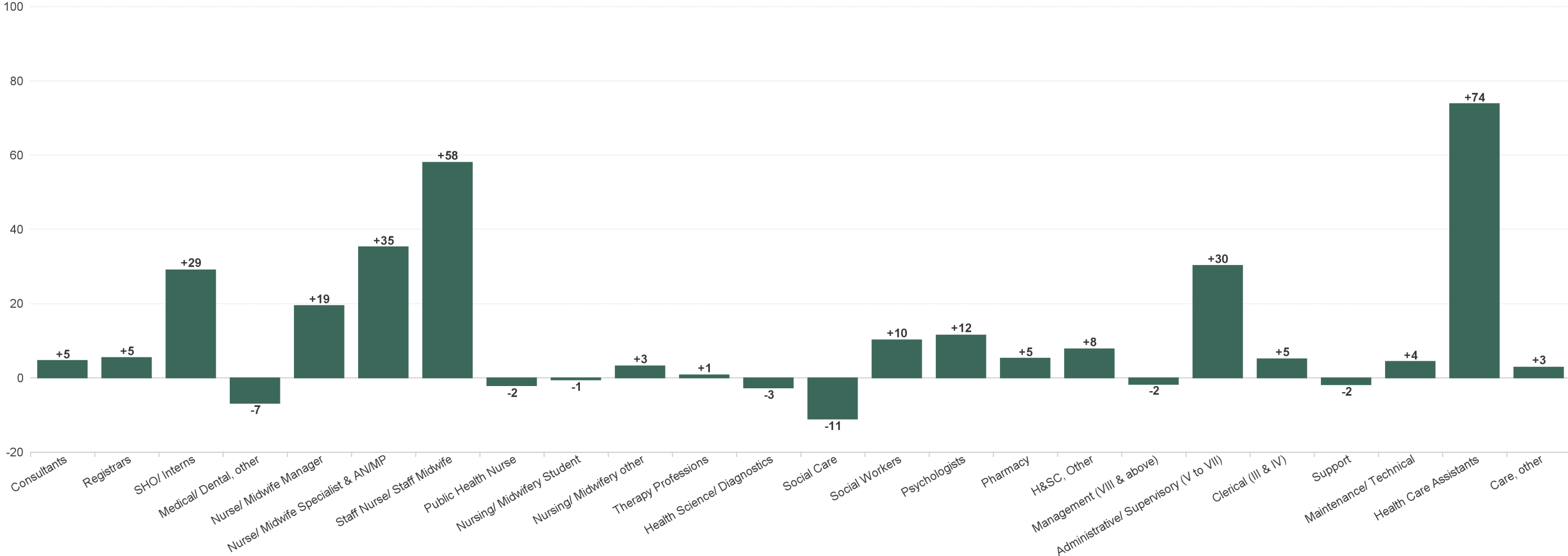
CHO 9 Employment Report: MAY 2024

Previous Month Summary Chart: Change since APR 2024



**CHO 9 Employment Report: MAY 2024**

**Previous Year Summary Chart: Change since MAY 2023**



# CHO 9 Employment Report: MAY 2024

## YTD Summary Chart: Change since DEC 2023

