

CHO 7 Employment Report: MAY 2024

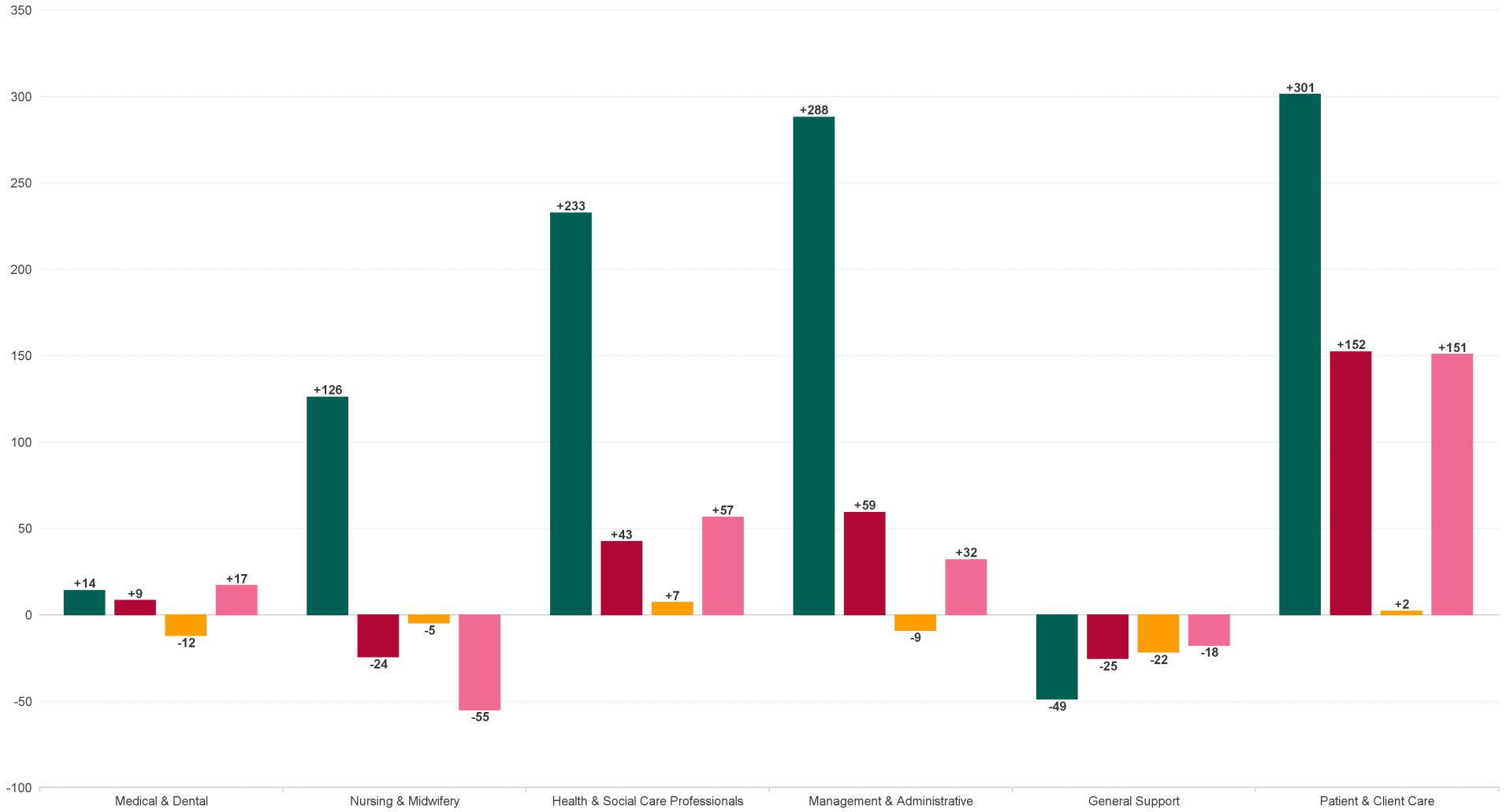
Employment by Staff Group (1) MAY 2024

Employment by Staff Group (1) MAY 2024	WTE DEC 2019	WTE DEC 2022	WTE DEC 2023	WTE APR 2024	WTE MAY 2024	WTE Change 2023	WTE Change 2024	WTE Change APR 2024	WTE Change Dec 2022 to MAY 2024	WTE Change Dec 2019 to MAY 2024	% WTE Change Dec 2022 to MAY 2024	No. MAY 2024
Overall	6,514	7,215	7,466	7,427	7,428	+251	-38	+1	+213	+913	2.96%	8,566
Consultants	60	63	69	74	74	+6	+5	+0	+11	+14	17.56%	78
Registrars	95	104	105	95	96	+1	-9	+1	-8	+1	-7.53%	102
SHO/ Interns	36	47	56	51	50	+10	-6	-1	+4	+14	8.04%	52
Medical/ Dental, other	80	63	67	65	65	+3	-2	-1	+2	-16	2.37%	96
Medical & Dental	271	276	297	286	285	+20	-12	-1	+9	+14	3.08%	328
Nurse/ Midwife Manager	396	455	460	448	450	+6	-11	+2	-5	+54	-1.12%	481
Nurse/ Midwife Specialist & AN/MP	94	133	155	155	155	+22	+0	-0	+22	+61	16.74%	170
Staff Nurse/ Staff Midwife	993	1,060	1,031	1,040	1,038	-28	+6	-2	-22	+45	-2.07%	1,185
Public Health Nurse	175	164	158	152	143	-6	-15	-9	-21	-32	-12.80%	184
Nursing/ Midwifery awaiting registration	10	3	7.49	1	1	+5	-7	-0	-2	-9	-69.02%	1
Post-registration Nurse/ Midwife Student	21	25	10	11	9	-15	-1	-2	-16	-12	-63.76%	9
Pre-registration Nurse/ Midwife Intern	1	0	1	20	20	+1	+19	-0	+20	+19	19,770.00%	40
Nursing/ Midwifery Student	32	28	18	32	30	-9	+11	-2	+2	-2	6.97%	50
Nursing/ Midwifery other	10	11	8	11	11	-3	+3	+0	-0	+1	-2.53%	14
Nursing & Midwifery	1,700	1,851	1,831	1,838	1,826	-20	-5	-11	-24	+126	-1.31%	2,084
Dietitians	25	36	41.88	45	45	+6	+4	+0	+10	+20	27.40%	57
Occupational Therapists	184	184	175.67	175	175	-8	-1	-0	-9	-9	-5.02%	203
Orthoptists		3	2.73	3	3	-0	-0	-0	-0	+3	-9.38%	3
Physiotherapists	114	136	139.22	139	141	+3	+2	+2	+5	+26	3.41%	160
Podiatrists & Chiropodists	1	6	8.3	9	9	+2	+0	-0	+3	+8	43.43%	10
Speech & Language Therapists	126	126	112.41	118	116	-13	+4	-2	-9	-9	-7.46%	129
Therapy Professions	450	490	480	488	488	-10	+8	-0	-2	+39	-0.38%	562
Health Science/ Diagnostics	3	11	9	9	9	-2	+0	+1	-2	+6	-17.22%	11
Social Care	371	477	498	493	498	+20	+0	+5	+21	+127	4.32%	546
Social Workers	105	123	127	126	125	+5	-2	-1	+2	+20	1.87%	137
Psychologists	81	96	109	113	110	+13	+0	-3	+13	+29	13.71%	123
Pharmacy	40	41	45	46	45	+4	-0	-1	+4	+5	9.83%	52
H&SC, Other	44	45	51	52	52	+5	+1	-1	+6	+7	13.72%	61
Health & Social Care Professionals	1,094	1,284	1,320	1,326	1,327	+35	+7	+0	+43	+233	3.31%	1,492
Management (VIII & above)	73	109	98	92	94	-11	-4	+2	-15	+21	-13.88%	96
Administrative/ Supervisory (V to VII)	182	287	323	325	326	+36	+3	+1	+39	+143	13.64%	340
Clerical (III & IV)	351	439	482	477	474	+43	-8	-3	+35	+124	8.07%	528
Management & Administrative	606	834	903	895	894	+68	-9	-1	+59	+288	7.12%	964
Support	410	382	372	360	358	-10	-14	-2	-24	-52	-6.30%	453
Maintenance/ Technical	41	46	52	44	45	+6	-7	+1	-1	+4	-2.57%	50
General Support	452	428	424	404	403	-4	-22	-2	-25	-49	-5.90%	503
Health Care Assistants	1,655	1,752	1,873	1,865	1,885	+121	+12	+20	+133	+230	7.58%	2,202
Home Help	127	131	148	149	149	+18	+0	-0	+18	+22	13.84%	243
Care, other	610	659	670	664	660	+11	-10	-4	+1	+50	0.22%	750
Patient & Client Care	2,392	2,541	2,691	2,678	2,693	+150	+2	+15	+152	+301	5.99%	3,195



WTE Change by Staff Category

■ WTE change since DEC 2019
 ■ WTE change since DEC 2022
 ■ WTE change since DEC 2023
 ■ WTE change since MAY 2023

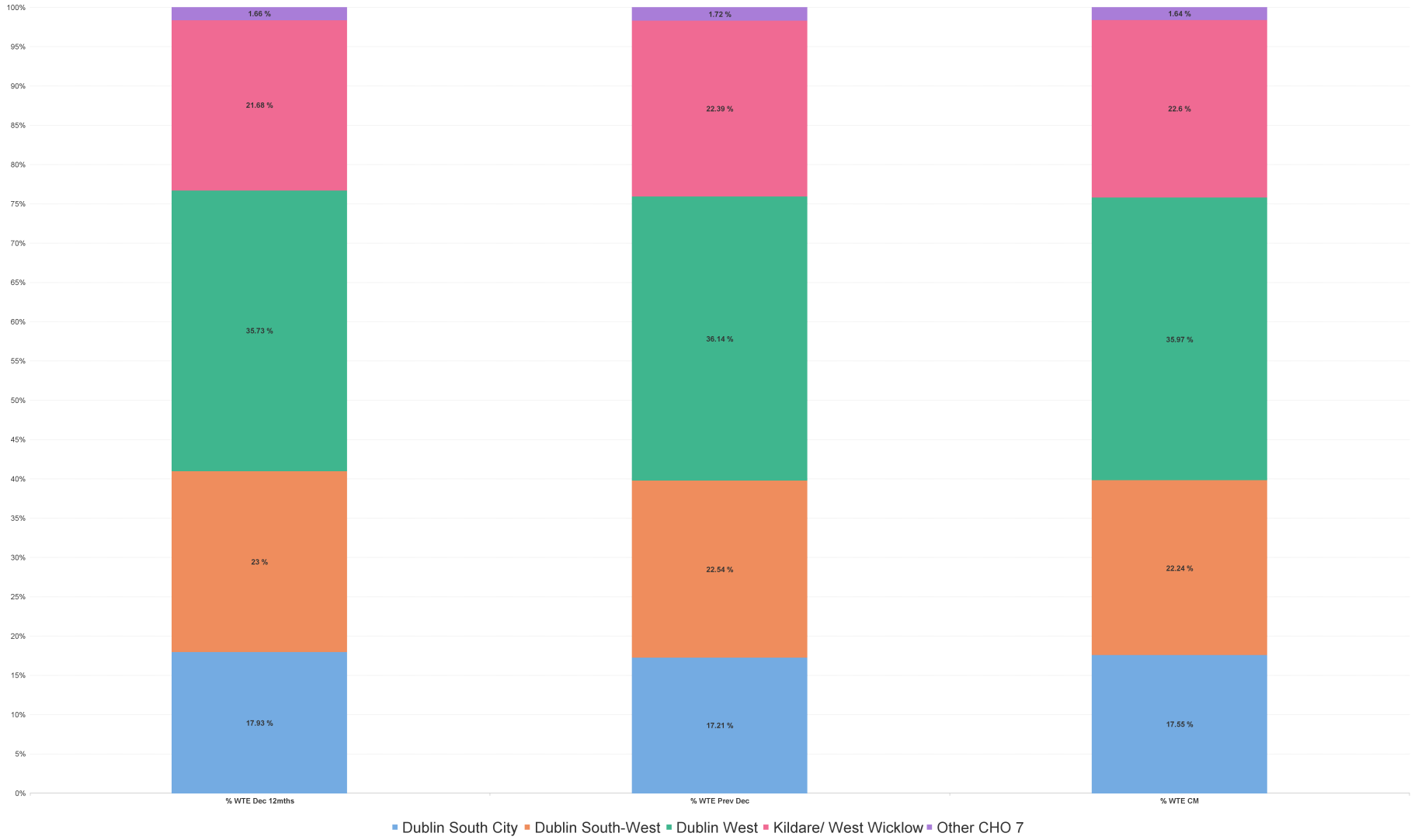


Employment Report by Hospital: MAY 2024

Hospital MAY 2024	WTE DEC 2019	WTE DEC 2022	WTE DEC 2023	WTE APR 2024	WTE MAY 2024	WTE Change 2023	WTE Change 2024	WTE Change APR 2024	WTE Change Dec 2022 to MAY 2024	WTE Change Dec 2019 to MAY 2024	% WTE Change Dec 2022 to MAY 2024	No. MAY 2024
Overall	6,514	7,215	7,466	7,427	7,428	+251	-38	+1	+213	+913	2.96%	8,566
Dublin South City	1,236	1,294	1,285	1,302	1,304	-9	+19	+2	+10	+68	0.79%	1,478
Dublin South-West	1,493	1,659	1,683	1,652	1,652	+23	-31	+0	-8	+159	-0.46%	1,883
Dublin West	2,348	2,578	2,698	2,682	2,672	+120	-26	-10	+94	+324	3.65%	3,048
Kildare/ West Wicklow	1,433	1,564	1,671	1,668	1,679	+107	+7	+10	+115	+246	7.34%	2,028
Other CHO 7	5	120	128	122	122	+9	-7	-1	+2	+116	1.65%	129



% Total by Hospital



Employment Report by HSE/S38: MAY 2024

Administration MAY 2024	WTE DEC 2019	WTE DEC 2022	WTE DEC 2023	WTE APR 2024	WTE MAY 2024	WTE Change 2023	WTE Change 2024	WTE Change APR 2024	WTE Change Dec 2022 to MAY 2024	WTE Change Dec 2019 to MAY 2024	% WTE Change Dec 2022 to MAY 2024	No. MAY 2024
Overall	6,514	7,215	7,466	7,427	7,428	+251	-38	+1	+213	+913	2.96%	8,566
Health Service Executive	3,151	3,411	3,513	3,511	3,493	+101	-20	-19	+81	+341	2.38%	3,990
Section 38 Voluntary Agencies	3,363	3,803	3,953	3,916	3,935	+150	-18	+20	+132	+572	3.48%	4,576



Employment Report by Administration: MAY 2024

Health Service Executive

MAY 2024	WTE DEC 2019	WTE DEC 2022	WTE DEC 2023	WTE APR 2024	WTE MAY 2024	WTE Change 2023	WTE Change 2024	WTE Change APR 2024	WTE Change Dec 2022 to MAY 2024	WTE Change Dec 2019 to MAY 2024	% WTE Change Dec 2022 to MAY 2024	No. MAY 2024
Total Health Service Executive	3,151	3,411	3,513	3,511	3,493	+101	-20	-19	+81	+341	2.38%	3,990
Consultants	54	57	63	67	67	+6	+5	+0	+10	+14	17.95%	70
Registrars	87	94	94	84	85	+0	-9	+1	-9	-2	-9.11%	90
SHO/ Interns	24	33	39	37	36	+6	-3	-0	+3	+13	9.33%	37
Medical/ Dental, other	78	61	66	65	64	+5	-2	-1	+3	-14	4.32%	95
Medical & Dental	242	245	262	252	253	+16	-9	+0	+7	+10	3.04%	292
Nurse/ Midwife Manager	231	256	263	262	263	+7	-0	+1	+7	+31	2.69%	277
Nurse/ Midwife Specialist & AN/MP	61	90	108	111	113	+18	+4	+2	+22	+52	24.65%	119
Staff Nurse/ Staff Midwife	520	537	508	526	526	-29	+18	+0	-11	+7	-2.01%	592
Public Health Nurse	175	164	158	152	143	-6	-15	-9	-21	-32	-12.80%	184
<i>Nursing/ Midwifery awaiting registration</i>	10	2	+7	1	1	-8	-7	-0	-1	-9	-1	1
<i>Post-registration Nurse/ Midwife Student</i>	21	25	+10	11	9	+4	-1	-14	-16	-12	-16	9
<i>Pre-registration Nurse/ Midwife Intern</i>	1	0		14	14	-1	+14	-2	+14	+13	+14	28
Nursing/ Midwifery Student	32	27	17	26	24	-9	+6	-2	-3	-8	-11.41%	38
Nursing/ Midwifery other	8	6	5	7	8	-0	+2	+0	+2	+0	29.01%	9
Nursing & Midwifery	1,027	1,080	1,060	1,085	1,076	-20	+16	-8	-4	+49	-0.37%	1,219
<i>Dietitians</i>	17	31	+33	35	36	+14	+3	+0	+5	+19	+5	45
<i>Occupational Therapists</i>	138	137	+123	117	117	-2	-5	-9	-20	-21	-20	136
<i>Orthoptists</i>		3	+3	3	3	+3	-0	-0	-0	+3	-0	3
<i>Physiotherapists</i>	70	80	+86	91	92	+10	+6	+13	+11	+21	+11	104
<i>Podiatrists & Chiropractors</i>	1	6	+8	9	9	+5	+0	+2	+3	+8	+3	10
<i>Speech & Language Therapists</i>	99	91	+84	86	85	-8	+0	-10	-7	-14	-7	95
Therapy Professions	325	348	337	341	340	-11	+3	-1	-8	+15	-2.22%	393
Health Science/ Diagnostics		8	6	5	6	-1	-0	+1	-2	+6	-20.21%	7
Social Care	11	11	11	11	11	+1	-1	-1	-0	-0	-0.28%	12
Social Workers	67	76	84	84	83	+7	-1	-1	+7	+16	8.76%	89
Psychologists	62	75	86	88	86	+11	+0	-2	+11	+25	14.63%	96
Pharmacy	25	27	29	30	27	+2	-1	-2	+1	+2	2.17%	30
H&SC, Other	43	44	49	51	51	+5	+2	-1	+7	+8	15.33%	60
Health & Social Care Professionals	533	588	601	610	604	+13	+3	-6	+16	+71	2.67%	687
Management (VIII & above)	40	67	57	52	54	-11	-2	+2	-13	+14	-19.46%	56
Administrative/ Supervisory (V to VII)	96	175	197	196	196	+22	-1	-1	+21	+100	11.95%	203
Clerical (III & IV)	241	300	335	335	332	+35	-3	-3	+32	+90	10.60%	363
Management & Administrative	377	542	588	584	582	+46	-7	-2	+40	+204	7.30%	622
Support	171	154	151	144	142	-4	-8	-2	-12	-28	-7.83%	161
Maintenance/ Technical	6	5	4	4	4	-1	-1	+0	-1	-2	-26.65%	5
General Support	176	159	155	148	146	-5	-9	-2	-13	-30	-8.45%	166
Health Care Assistants	441	403	431	424	425	+28	-5	+1	+22	-16	5.57%	481
Home Help	127	131	148	149	149	+18	+0	-0	+18	+22	13.84%	243
Care, other	227	262	267	260	258	+5	-9	-2	-5	+30	-1.81%	280
Patient & Client Care	796	796	846	833	832	+50	-14	-1	+36	+36	4.49%	1,004



Section 38 Voluntary Agencies

MAY 2024	WTE DEC 2019	WTE DEC 2022	WTE DEC 2023	WTE APR 2024	WTE MAY 2024	WTE Change 2023	WTE Change 2024	WTE Change APR 2024	WTE Change Dec 2022 to MAY 2024	WTE Change Dec 2019 to MAY 2024	% WTE Change Dec 2022 to MAY 2024	No. MAY 2024
Total Section 38 Voluntary Agencies	3,363	3,803	3,953	3,916	3,935	+150	-18	+20	+132	+572	3.48%	4,576
Consultants	6	6	7	7	7	+1	+0	+0	+1	+1	13.98%	8
Registrars	8	10	11	11	11	+1	-0	-0	+1	+3	7.33%	12
SHO/ Interns	12	13	17	14	14	+4	-3	-1	+1	+2	4.78%	15
Medical/ Dental, other	2	2	1	1	1	-1	+0	+0	-1	-2	-63.19%	1
Medical & Dental	29	31	35	33	32	+4	-3	-1	+1	+4	3.44%	36
Nurse/ Midwife Manager	165	199	197	186	187	-1	-11	+1	-12	+22	-6.03%	204
Nurse/ Midwife Specialist & AN/MP	33	42	46	44	42	+4	-4	-2	-0	+9	-0.12%	51
Staff Nurse/ Staff Midwife	473	523	523	514	511	+1	-12	-2	-11	+38	-2.13%	593
<i>Nursing/ Midwifery awaiting registration</i>		1				+1			-1		-1	
<i>Pre-registration Nurse/ Midwife Intern</i>			+1	6	6		+5	-2	+6	+6	+6	12
Nursing/ Midwifery Student		1	1	6	6	+0	+5	+0	+5	+6	500.00%	12
Nursing/ Midwifery other	3	6	3	4	4	-3	+1	-0	-2	+1	-36.41%	5
Nursing & Midwifery	673	770	771	753	750	+0	-21	-3	-20	+77	-2.62%	865
<i>Dietitians</i>	9	5	+9	10	10	-4	+1	+1	+5	+1	+5	12
<i>Occupational Therapists</i>	45	47	+53	58	58	+2	+5	+6	+10	+12	+10	67
<i>Physiotherapists</i>	44	56	+53	48	49	+12	-4	-3	-7	+5	-7	56
<i>Speech & Language Therapists</i>	27	34	+28	31	32	+7	+4	+5	-3	+5	-3	34
Therapy Professions	125	142	143	147	148	+1	+5	+1	+6	+23	4.11%	169
Health Science/ Diagnostics	3	4	3	3	3	-1	+0	+0	-0	+0	-11.02%	4
Social Care	360	467	486	481	487	+20	+1	+6	+21	+127	4.42%	534
Social Workers	37	46	44	42	42	-3	-2	-0	-4	+5	-9.54%	48
Psychologists	19	21	24	24	23	+2	-0	-1	+2	+4	10.44%	27
Pharmacy	15	14	17	17	18	+2	+1	+1	+3	+3	24.33%	22
H&SC, Other	2	2	2	1	1	+1	-1	+0	-1	-1	-33.33%	1
Health & Social Care Professionals	561	696	718	716	723	+23	+4	+6	+27	+162	3.86%	805
Management (VIII & above)	33	42	41	40	40	-0	-2	-0	-2	+7	-4.88%	40
Administrative/ Supervisory (V to VII)	86	112	126	129	130	+14	+4	+1	+18	+44	16.27%	137
Clerical (III & IV)	109	139	147	143	143	+8	-5	-0	+4	+33	2.62%	165
Management & Administrative	229	292	314	311	312	+22	-2	+1	+20	+84	6.77%	342
Support	240	228	222	217	216	-6	-6	-1	-12	-24	-5.27%	292
Maintenance/ Technical	35	41	48	40	41	+7	-7	+1	+0	+5	0.57%	45
General Support	275	269	269	257	257	+1	-13	-0	-12	-19	-4.39%	337
Health Care Assistants	1,213	1,349	1,443	1,440	1,459	+94	+17	+19	+110	+246	8.18%	1,721
Care, other	383	396	403	405	402	+6	-0	-2	+6	+20	1.56%	470
Patient & Client Care	1,596	1,745	1,845	1,845	1,862	+100	+17	+16	+117	+266	6.68%	2,191



Employment Report by Hospital : MAY 2024

Dublin South City	WTE DEC 2019	WTE DEC 2022	WTE DEC 2023	WTE APR 2024	WTE MAY 2024	WTE Change 2023	WTE Change 2024	WTE Change APR 2024	WTE Change Dec 2022 to MAY 2024	WTE Change Dec 2019 to MAY 2024	% WTE Change Dec 2022 to MAY 2024	No. MAY 2024
Total Dublin South City	1,236	1,294	1,285	1,302	1,304	-9	+19	+2	+10	+68	0.79%	1,478
Consultants	28	33	36	38	37	+4	+1	-0	+5	+9	14.32%	40
Registrars	25	32	24	22	22	-8	-1	+1	-9	-2	-28.94%	23
SHO/ Interns	16	19	24	25	24	+5	-1	-1	+5	+8	23.87%	24
Medical/ Dental, other	12	11	11	11	11	+1	+0	-0	+1	-1	6.36%	15
Medical & Dental	81	94	96	96	95	+2	-1	-1	+1	+14	0.83%	102
Nurse/ Midwife Manager	140	136	128	128	130	-8	+2	+2	-6	-10	-4.31%	138
Nurse/ Midwife Specialist & ANMP	42	61	77	71	69	+16	-8	-2	+9	+28	14.34%	78
Staff Nurse/ Staff Midwife	269	296	284	294	296	-13	+13	+2	-0	+27	-0.06%	335
Public Health Nurse	36	30	27	27	27	-3	-0	-0	-3	-9	-9.66%	34
<i>Nursing/ Midwifery awaiting registration</i>	9	2	7.49	1	1	+6	-7	-0	-1	-8	-53.30%	1
<i>Post-registration Nurse/ Midwife Student</i>	18									-18	-100.00%	
<i>Pre-registration Nurse/ Midwife Intern</i>	1	0		14	14	-0	+14	-0	+14	+13	#####	28
Nursing/ Midwifery Student	28	2	7	15	15	+5	+7	-0	+13	-13	614.49%	29
Nursing/ Midwifery other	10	8	6	8	9	-2	+3	+0	+1	-1	8.95%	11
Nursing & Midwifery	525	533	529	544	546	-4	+17	+2	+13	+21	2.48%	625
<i>Dietitians</i>	4	7	4.03	5	5	-2	+1	+0	-2	+1	-30.52%	5
<i>Occupational Therapists</i>	65	54	54.38	55	54	-0	+0	-1	-0	-11	-0.11%	67
<i>Physiotherapists</i>	37	34	33.17	35	35	-1	+2	+0	+1	-2	1.80%	40
<i>Podiatrists & Chiropodists</i>		2	2	1	1	+0	-1	+0	-1	+1	-49.49%	1
<i>Speech & Language Therapists</i>	16	18	15.34	17	17	-2	+2	-0	-1	+1	-3.02%	20
Therapy Professions	121	115	109	113	112	-6	+3	-1	-3	-9	-2.56%	133
Health Science/ Diagnostics	0	0	0	0	0	-0	+0	+0	-0	+0	-23.33%	1
Social Care	2	3	3	4	4	+0	+1	+0	+1	+2	34.68%	4
Social Workers	32	38	42	41	40	+4	-2	-1	+3	+8	6.63%	43
Psychologists	20	24	23	26	25	-2	+2	-1	+0	+5	1.76%	27
Pharmacy	11	9	11	11	12	+2	+1	+1	+3	+1	33.41%	14
H&SC, Other	17	20	20	20	20	+1	+0	+0	+1	+3	3.41%	24
Health & Social Care Professionals	204	209	208	215	214	-1	+5	-1	+5	+10	2.21%	246
Management (VIII & above)	7	6	6	6	6	-0	+0	+0	-0	-1	-0.33%	6
Administrative/ Supervisory (V to VII)	34	36	40	41	42	+4	+2	+1	+5	+8	15.12%	44
Clerical (III & IV)	67	82	80	77	76	-2	-4	-1	-6	+9	-7.15%	85
Management & Administrative	108	124	126	124	124	+2	-2	-0	-0	+16	-0.35%	135
Support	117	116	108	108	106	-8	-1	-1	-10	-11	-8.27%	121
Maintenance/ Technical	9	11	8	8	8	-2	+0	+0	-2	-1	-21.77%	9
General Support	126	126	116	116	115	-10	-1	-1	-12	-12	-9.40%	130
Health Care Assistants	181	193	196	193	196	+3	-0	+3	+3	+15	1.63%	224
Care, other	10	14	13	15	15	-1	+2	-0	+1	+5	5.33%	16
Patient & Client Care	192	207	210	208	211	+2	+1	+3	+4	+20	1.88%	240

Dublin South-West	WTE DEC 2019	WTE DEC 2022	WTE DEC 2023	WTE APR 2024	WTE MAY 2024	WTE Change 2023	WTE Change 2024	WTE Change APR 2024	WTE Change Dec 2022 to MAY 2024	WTE Change Dec 2019 to MAY 2024	% WTE Change Dec 2022 to MAY 2024	No. MAY 2024
-------------------	--------------	--------------	--------------	--------------	--------------	-----------------	-----------------	---------------------	---------------------------------	---------------------------------	-----------------------------------	--------------



Total Dublin South-West	1,493	1,659	1,683	1,652	1,652	+23	-31	+0	-8	+159	-0.46%	1,883
Consultants	0									-0	-100.00%	
Registrars	1	1	1	1	1	+0	+0	+0	+0	+0	0.00%	1
Medical/ Dental, other	11	8	8	8	7	+0	-0	-1	-0	-4	-4.74%	10
Medical & Dental	12	9	9	9	8	+0	-0	-1	-0	-4	-4.19%	11
Nurse/ Midwife Manager	61	85	97	94	93	+12	-4	-1	+8	+31	9.12%	103
Nurse/ Midwife Specialist & AN/MP	2	11	10	15	14	-0	+4	-1	+4	+12	34.67%	16
Staff Nurse/ Staff Midwife	231	241	228	231	231	-13	+2	-0	-10	-0	-4.34%	288
Public Health Nurse	42	49	36	33	30	-13	-6	-4	-19	-12	-38.97%	38
<i>Post-registration Nurse/ Midwife Student</i>	2	6	4	4	4	-2	+0	+0	-2	+2	-32.66%	4
Nursing/ Midwifery Student	2	6	4	4	4	-2	+0	+0	-2	+2	-32.66%	4
Nursing/ Midwifery other			1	1	1	+1	+0	+0	+1	+1	-100.00%	1
Nursing & Midwifery	338	392	376	378	373	-15	-3	-5	-19	+34	-4.84%	430
<i>Dietitians</i>	3	11	11.18	11	11	+0	-0	-0	-0	+8	-2.89%	12
<i>Occupational Therapists</i>	30	40	27.92	27	28	-12	+1	+1	-11	-2	-28.64%	32
<i>Physiotherapists</i>	23	27	25.94	29	29	-1	+3	+0	+2	+6	7.27%	33
<i>Podiatrists & Chiropodists</i>		1	1	2	2	+0	+1	-0	+1	+2	98.99%	2
<i>Speech & Language Therapists</i>	31	31	26.84	21	22	-4	-5	+1	-9	-9	-30.26%	23
Therapy Professions	87	110	93	90	92	-17	-1	+2	-18	+5	-16.50%	102
Social Care	287	322	336	323	322	+14	-14	-1	+1	+35	0.17%	355
Social Workers	24	20	20	20	19	+0	-1	-1	-1	-5	-5.69%	20
Psychologists	18	19	17	17	17	-2	-0	-0	-2	-2	-11.25%	19
Pharmacy	1	1	1	1	1	+0	-0	-0	+0	+0	0.00%	1
H&SC, Other	3	2	1	1	1	-1	+0	+0	-1	-2	-59.84%	1
Health & Social Care Professionals	419	474	467	451	451	-6	-16	-0	-22	+32	-4.71%	498
Management (VIII & above)	12	23	19	18	18	-4	-0	+0	-4	+6	-19.74%	19
Administrative/ Supervisory (V to VII)	32	53	59	58	57	+5	-1	-1	+4	+25	6.95%	59
Clerical (III & IV)	67	81	99	97	96	+18	-4	-1	+15	+29	17.95%	106
Management & Administrative	111	157	176	173	171	+19	-6	-2	+14	+60	8.77%	184
Support	91	77	73	60	60	-5	-13	-0	-17	-31	-22.51%	78
Maintenance/ Technical	16	17	17	15	16	-1	-1	+1	-1	+0	-6.89%	19
General Support	107	95	90	76	76	-5	-13	+1	-19	-31	-19.66%	97
Health Care Assistants	339	338	354	349	356	+17	+2	+8	+19	+17	5.50%	409
Care, other	167	196	210	216	217	+14	+6	+1	+20	+49	10.35%	254
Patient & Client Care	506	534	565	565	573	+31	+8	+8	+39	+66	7.28%	663

Dublin West	WTE DEC 2019	WTE DEC 2022	WTE DEC 2023	WTE APR 2024	WTE MAY 2024	WTE Change 2023	WTE Change 2024	WTE Change APR 2024	WTE Change Dec 2022 to MAY 2024	WTE Change Dec 2019 to MAY 2024	% WTE Change Dec 2022 to MAY 2024	No. MAY 2024
Total Dublin West	2,348	2,578	2,698	2,682	2,672	+120	-26	-10	+94	+324	3.65%	3,048
Consultants	19	17	19	21	20	+2	+2	-0	+3	+1	19.15%	21
Registrars	63	59	72	60	61	+12	-11	+0	+1	-3	2.00%	66
SHO/ Interns	13	21	26	20	20	+5	-6	-1	-1	+7	-4.26%	21
Medical/ Dental, other	41	31	32	31	32	+1	-1	+1	+1	-9	1.74%	48
Medical & Dental	136	128	149	132	132	+21	-16	-0	+4	-4	3.23%	156
Nurse/ Midwife Manager	119	146	140	130	133	-6	-7	+3	-12	+14	-8.47%	142
Nurse/ Midwife Specialist & AN/MP	10	18	20	21	20	+2	-0	-1	+2	+10	11.60%	21
Staff Nurse/ Staff Midwife	295	324	325	315	310	+1	-15	-5	-14	+15	-4.28%	344
Public Health Nurse	44	29	34	32	31	+5	-3	-1	+2	-12	6.57%	39
<i>Nursing/ Midwifery awaiting registration</i>	1	1				-1			-1	-1	-100.00%	
<i>Post-registration Nurse/ Midwife Student</i>	1	9	1	2		-8	-1	-2	-9	-1	-100.00%	
<i>Pre-registration Nurse/ Midwife Intern</i>			1	6	6	+1	+5	+0	+6	+6	-100.00%	12
Nursing/ Midwifery Student	2	10	2	8	6	-8	+4	-2	-4	+4	-39.46%	12
Nursing/ Midwifery other	1	4	2	2	2	-2	+0	+0	-2	+1	-56.82%	2
Nursing & Midwifery	470	530	522	508	502	-8	-20	-6	-28	+32	-5.29%	560
<i>Dietitians</i>	15	9	16.37	17	17	+7	+0	+0	+8	+2	86.91%	22



Dublin West	WTE DEC 2019	WTE DEC 2022	WTE DEC 2023	WTE APR 2024	WTE MAY 2024	WTE Change 2023	WTE Change 2024	WTE Change APR 2024	WTE Change Dec 2022 to MAY 2024	WTE Change Dec 2019 to MAY 2024	% WTE Change Dec 2022 to MAY 2024	No. MAY 2024
Total Dublin West	2,348	2,578	2,698	2,682	2,672	+120	-26	-10	+94	+324	3.65%	3,048
Occupational Therapists	38	43	46.09	46	46	+3	-1	+0	+2	+8	4.98%	50
Physiotherapists	32	38	41.08	37	39	+3	-2	+1	+1	+6	2.20%	43
Podiatrists & Chiropodists		1	1	1	1	+0	+0	+0	+0	+1	1.01%	1
Speech & Language Therapists	34	44	43	47	46	-1	+3	-1	+3	+12	5.74%	49
Therapy Professions	119	135	148	148	148	+13	+0	+0	+13	+29	9.85%	165
Health Science/ Diagnostics	3	3	3	3	3	-1	+0	+0	-0	+0	-9.91%	3
Social Care	20	53	56	61	63	+3	+7	+1	+10	+42	18.20%	65
Social Workers	28	36	32	34	34	-4	+2	-0	-3	+5	-7.65%	39
Psychologists	24	28	31	32	31	+3	-0	-1	+3	+6	9.82%	33
Pharmacy	28	30	31	33	31	+1	-1	-2	+0	+3	1.39%	35
H&SC, Other	24	21	27	29	29	+6	+3	-0	+8	+6	40.39%	35
Health & Social Care Professionals	246	306	327	340	338	+21	+11	-2	+31	+92	10.23%	375
Management (VIII & above)	27	31	31	30	30	-0	-1	-0	-1	+3	-4.43%	30
Administrative/ Supervisory (V to VII)	54	90	96	100	101	+6	+5	+1	+11	+47	12.24%	105
Clerical (III & IV)	96	123	141	136	134	+18	-7	-2	+11	+38	9.25%	154
Management & Administrative	176	244	268	265	265	+24	-3	-1	+21	+88	8.61%	289
Support	179	158	162	164	163	+4	+1	-1	+5	-16	3.00%	217
Maintenance/ Technical	14	17	25	18	18	+8	-7	+0	+1	+4	7.68%	19
General Support	193	175	186	182	181	+12	-6	-1	+6	-12	3.45%	236
Health Care Assistants	828	908	952	968	972	+44	+20	+4	+65	+144	7.12%	1,119
Home Help			4	5	5	+4	+1	+0	+5	+5	-100.00%	5
Care, other	299	287	290	282	277	+3	-13	-5	-10	-22	-3.50%	308
Patient & Client Care	1,127	1,195	1,246	1,255	1,254	+51	+8	-1	+60	+128	4.98%	1,432

Kildare/ West Wicklow	WTE DEC 2019	WTE DEC 2022	WTE DEC 2023	WTE APR 2024	WTE MAY 2024	WTE Change 2023	WTE Change 2024	WTE Change APR 2024	WTE Change Dec 2022 to MAY 2024	WTE Change Dec 2019 to MAY 2024	% WTE Change Dec 2022 to MAY 2024	No. MAY 2024
Total Kildare/ West Wicklow	1,433	1,564	1,671	1,668	1,679	+107	+7	+10	+115	+246	7.34%	2,028
Consultants	12	13	14	15	16	+1	+2	+1	+3	+4	23.56%	17
Registrars	6	12	8	12	12	-4	+4	-0	+0	+6	1.39%	12
SHO/ Interns	7	7	6	6	7	-1	+1	+1	+0	-0	0.89%	7
Medical/ Dental, other	17	14	15	14	14	+1	-1	-0	+0	-3	1.08%	22
Medical & Dental	42	45	43	48	49	-2	+5	+1	+3	+7	7.65%	58
Nurse/ Midwife Manager	75	84	89	88	87	+5	-1	-1	+3	+12	3.98%	91
Nurse/ Midwife Specialist & ANMP	40	43	46	45	49	+3	+3	+4	+6	+9	13.29%	53
Staff Nurse/ Staff Midwife	198	196	195	200	201	-1	+6	+1	+5	+3	2.31%	238
Public Health Nurse	55	56	61	60	55	+5	-6	-5	-1	+1	-1.90%	73
Post-registration Nurse/ Midwife Student		10	5	5	5	-5	-0	-0	-5	+5	-49.80%	5
Nursing/ Midwifery Student		10	5	5	5	-5	-0	-0	-5	+5	-49.80%	5
Nursing & Midwifery	368	390	395	399	397	+6	+2	-1	+8	+30	1.96%	460
Dietitians	4	9	8.3	11	11	-1	+3	+0	+2	+8	25.38%	16
Occupational Therapists	51	46	47.28	47	46	+1	-1	-0	+0	-4	0.17%	54
Orthoptists		3	2.73	3	3	-0	-0	-0	-0	+3	-9.38%	3
Physiotherapists	22	37	38.03	38	37	+1	-1	-0	+0	+15	0.60%	43
Podiatrists & Chiropodists	1	2	4.3	5	5	+2	+0	+0	+3	+4	129.80%	6
Speech & Language Therapists	46	34	27.23	33	32	-6	+4	-1	-2	-14	-5.94%	37
Therapy Professions	123	131	128	135	134	-3	+6	-1	+3	+10	2.23%	159
Health Science/ Diagnostics		8	6	5	6	-1	-0	+1	-2	+6	-20.21%	7
Social Care	61	100	103	104	109	+3	+6	+5	+9	+48	9.44%	122
Social Workers	20	21	25	25	26	+4	+1	+2	+5	+6	24.72%	29



Kildare/ West Wicklow	WTE DEC 2019	WTE DEC 2022	WTE DEC 2023	WTE APR 2024	WTE MAY 2024	WTE Change 2023	WTE Change 2024	WTE Change APR 2024	WTE Change Dec 2022 to MAY 2024	WTE Change Dec 2019 to MAY 2024	% WTE Change Dec 2022 to MAY 2024	No. MAY 2024
Total Kildare/ West Wicklow	1,433	1,564	1,671	1,668	1,679	+107	+7	+10	+115	+246	7.34%	2,028
Psychologists	18	25	38	39	38	+13	-1	-1	+12	+19	47.82%	44
Pharmacy	1	0	1	1	1	+1	-0	+0	+1	-0	300.00%	1
H&SC, Other	1	2	3	2	1	+0	-2	-1	-1	+0	-57.81%	1
Health & Social Care Professionals	225	287	304	311	315	+17	+10	+4	+27	+89	9.56%	363
Management (VIII & above)	24	28	25	23	24	-3	-1	+2	-3	+0	-11.32%	25
Administrative/ Supervisory (V to VII)	61	65	79	80	79	+14	+0	-1	+14	+18	21.41%	82
Clerical (III & IV)	120	116	121	127	128	+5	+7	+1	+12	+8	10.20%	140
Management & Administrative	206	209	225	229	232	+16	+6	+2	+23	+26	10.87%	247
Support	23	31	30	29	29	-1	-1	-0	-2	+6	-5.91%	37
Maintenance/ Technical	2	1	2	2	2	+1	+0	+0	+1	+0	73.72%	3
General Support	25	32	32	31	31	+0	-1	-0	-1	+6	-2.52%	40
Health Care Assistants	306	310	371	355	360	+60	-11	+5	+50	+54	16.07%	450
Home Help	127	131	144	144	144	+14	-1	-0	+13	+17	10.01%	238
Care, other	134	160	156	152	152	-4	-4	-0	-9	+17	-5.38%	172
Patient & Client Care	567	601	671	650	655	+70	-16	+5	+54	+88	9.03%	860

Other CHO 7	WTE DEC 2019	WTE DEC 2022	WTE DEC 2023	WTE APR 2024	WTE MAY 2024	WTE Change 2023	WTE Change 2024	WTE Change APR 2024	WTE Change Dec 2022 to MAY 2024	WTE Change Dec 2019 to MAY 2024	% WTE Change Dec 2022 to MAY 2024	No. MAY 2024
Total Other CHO 7	5	120	128	122	122	+9	-7	-1	+2	+116	1.65%	129
Medical/ Dental, other				1	0		+0	-0	+0	+0	-100.00%	1
Medical & Dental				1	0		+0	-0	+0	+0	-100.00%	1
Nurse/ Midwife Manager		4	7	7	6	+3	-1	-1	+2	+6	44.49%	7
Nurse/ Midwife Specialist & ANMP			1	2	2	+1	+1	+0	+2	+2	-100.00%	2
Staff Nurse/ Staff Midwife		2				-2			-2		-100.00%	
Nursing/ Midwifery other											-100.00%	
Nursing & Midwifery		6	8	9	8	+2	+0	-1	+2	+8	30.48%	9
<i>Dietitians</i>			2	2	2	+2	+0	+0	+2	+2	-100.00%	2
<i>Physiotherapists</i>			1	1	1	+1	+0	+0	+1	+1	-100.00%	1
Therapy Professions			3	3	3	+3	+0	+0	+3	+3	-100.00%	3
Social Workers		7	8	6	6	+1	-2	+0	-2	+6	-20.63%	6
Psychologists			1			+1	-1				-100.00%	
Pharmacy		1	1	1	1	+0	+0	+0	+0	+1	1.01%	1
Health & Social Care Professionals		8	13	10	10	+5	-3	+0	+1	+10	18.05%	10
Management (VIII & above)	3	22	18	16	16	-4	-2	+0	-6	+13	-28.21%	16
Administrative/ Supervisory (V to VII)	2	42	49	47	47	+7	-2	+0	+5	+45	11.75%	50
Clerical (III & IV)	1	37	40	41	41	+3	+0	+0	+4	+40	9.71%	43
Management & Administrative	5	101	107	103	103	+6	-4	+0	+2	+97	2.34%	109
Health Care Assistants		3				-3			-3		-100.00%	
Care, other		1				-1			-1		-100.00%	
Patient & Client Care		4				-4			-4		-100.00%	



Employment Report by Grade Group: MAY 2024

Employment by Grade Group MAY 2024	WTE DEC 2019	WTE DEC 2022	WTE DEC 2023	WTE APR 2024	WTE MAY 2024	WTE Change 2023	WTE Change 2024	WTE Change APR 2024	WTE Change Dec 2022 to MAY 2024	WTE Change Dec 2019 to MAY 2024	% WTE Change Dec 2022 to MAY 2024	No. MAY 2024
Overall	6,514	7,215	7,466	7,427	7,428	+251	-38	+1	+213	+913	2.96%	8,566
Consultant Medicine	7	7	8	8	8	+1	+0	+0	+1	+1	12.03%	9
Consultant Paediatrics	0									-0	-100.00%	
Consultant Psychiatry	52	56	62	66	66	+6	+5	+0	+10	+14	18.27%	69
Consultant Surgery	1									-1	-100.00%	
Consultants	60	63	69	74	74	+6	+5	+0	+11	+14	17.56%	78
Registrar	72	70	77	70	71	+7	-6	+1	+1	-1	1.59%	73
Senior Registrar	19	31	22	19	19	-9	-3	+0	-12	+0	-37.90%	22
Specialist Registrar	4	3	6	6	6	+3	-0	-0	+3	+2	94.26%	7
Registrars	95	104	105	95	96	+1	-9	+1	-8	+1	-7.53%	102
Interns	2	3	3	2	2	+0	-1	+0	-1	-0	-35.03%	2
Senior House Officer	34	44	53	49	48	+10	-5	-1	+5	+15	10.95%	50
SHO/ Interns	36	47	56	51	50	+10	-6	-1	+4	+14	8.04%	52
Dentists	34	30	30	29	29	+0	-1	+0	-1	-5	-4.72%	36
Other Medical	47	33	36	36	36	+3	-0	-1	+3	-11	8.91%	60
Medical/ Dental, other	80	63	67	65	65	+3	-2	-1	+2	-16	2.37%	96
Medical & Dental	271	276		286	285	+20	-12	-1	+9	+14	3.08%	328
Clinical Nurse/ Midwife Manager 1	100	109	98	87	89	-11	-9	+2	-20	-11	-18.37%	95
Clinical Nurse/ Midwife Manager 2	188	214	225	226	226	+11	+0	+0	+12	+38	5.44%	243
Clinical Nurse/ Midwife Manager 3	40	42	42	39	38	+0	-5	-1	-5	-3	-10.96%	42
Director Nursing/Midwifery, Assistant	52	67	70	72	72	+3	+2	-0	+5	+20	7.12%	74
Director of Nursing/Midwifery	16	23	24	25	26	+2	+1	+1	+3	+10	14.06%	27
Nurse/ Midwife Manager	396	455	460	448	450	+6	-11	+2	-5	+54	-1.12%	481
Advanced Nurse/ Midwife Practitioner	2	16	17	19	19	+2	+2	+0	+3	+17	21.50%	20
Adv. Nurse/ Midwife, Candidate	2	12	13	11	11	+1	-2	-1	-1	+9	-9.19%	11
Clinical Nurse/ Midwife Specialist	89	105	125	124	125	+19	+0	+1	+20	+36	18.92%	139
Nurse/ Midwife Specialist & AN/MP	94	133	155	155	155	+22	+0	-0	+22	+61	16.74%	170
Staff Nurse [Intellectual Disability]	194	226	221	218	216	-5	-5	-2	-10	+22	-4.27%	256
Staff Nurse [Psychiatric]	191	198	193	207	201	-5	+7	-7	+3	+9	1.41%	220
Staff Nurses [General/ Children's]	608	636	617	614	621	-19	+4	+7	-15	+13	-2.37%	709
Staff Nurse/ Staff Midwife	993	1,060	1,031	1,040	1,038	-28	+6	-2	-22	+45	-2.07%	1,185
Public Health Nurse	175	164	158	152	143	-6	-15	-9	-21	-32	-12.80%	184
Public Health Nurse	175	164	158	152	143	-6	-15	-9	-21	-32	-12.80%	184
Nursing/ Midwifery awaiting registration	10	3	7	1	1	+5	-7	-0	-2	-9	-69.02%	1
Post-registration Nurse/ Midwife Student	21	25	10	11	9	-15	-1	-2	-16	-12	-63.76%	9
Pre-registration Nurse/ Midwife Intern	1	0	1	20	20	+1	+19	-0	+20	+19	#####	40
Nursing/ Midwifery Student	32	28	18	32	30	-9	+11	-2	+2	-2	6.97%	50
Nursing Education/Clinical	10	10	8	11	11	-2	+3	+0	+1	+1	6.79%	14
Other Nursing/ Midwifery		1				-1			-1		-100.00%	
Nursing/ Midwifery other	10	11	8	11	11	-3	+3	+0	-0	+1	-2.53%	14
Nursing & Midwifery	1,700	1,851		1,838	1,826	-20	-5	-11	-24	+126	-1.31%	2,084
Dietitians	25	36	42	45	45	+6	+4	+0	+10	+20	27.40%	57
Occupational Therapists	184	184	176	175	175	-8	-1	-0	-9	-9	-5.02%	203
Orthoptists		3	3	3	3	-0	-0	-0	-0	+3	-9.38%	3
Physiotherapists	114	136	139	139	141	+3	+2	+2	+5	+26	3.41%	160
Podiatrists & Chiroprodists	1	6	8	9	9	+2	+0	-0	+3	+8	43.43%	10
Speech & Language Therapists	126	126	112	118	116	-13	+4	-2	-9	-9	-7.46%	129
Therapy Professions	450	490	480	488	488	-10	+8	-0	-2	+39	-0.38%	562
Audiology		8	6	5	6	-1	-0	+1	-2	+6	-20.21%	7
Phlebotomists	1	0	0	0	0	-0	+0	+0	-0	-1	-23.33%	1
Radiographers	1	1	2	1	1	+0	-1	+0	-0	+0	-24.81%	1
Respiratory Physiologists	1	2	1	2	2	-1	+1	+0	+0	+1	0.00%	2
Health Science/ Diagnostics	3	11	9	9	9	-2	+0	+1	-2	+6	-17.22%	11
Social Care	371	477	498	493	498	+20	+0	+5	+21	+127	4.32%	546
Social Care	371	477	498	493	498	+20	+0	+5	+21	+127	4.32%	546

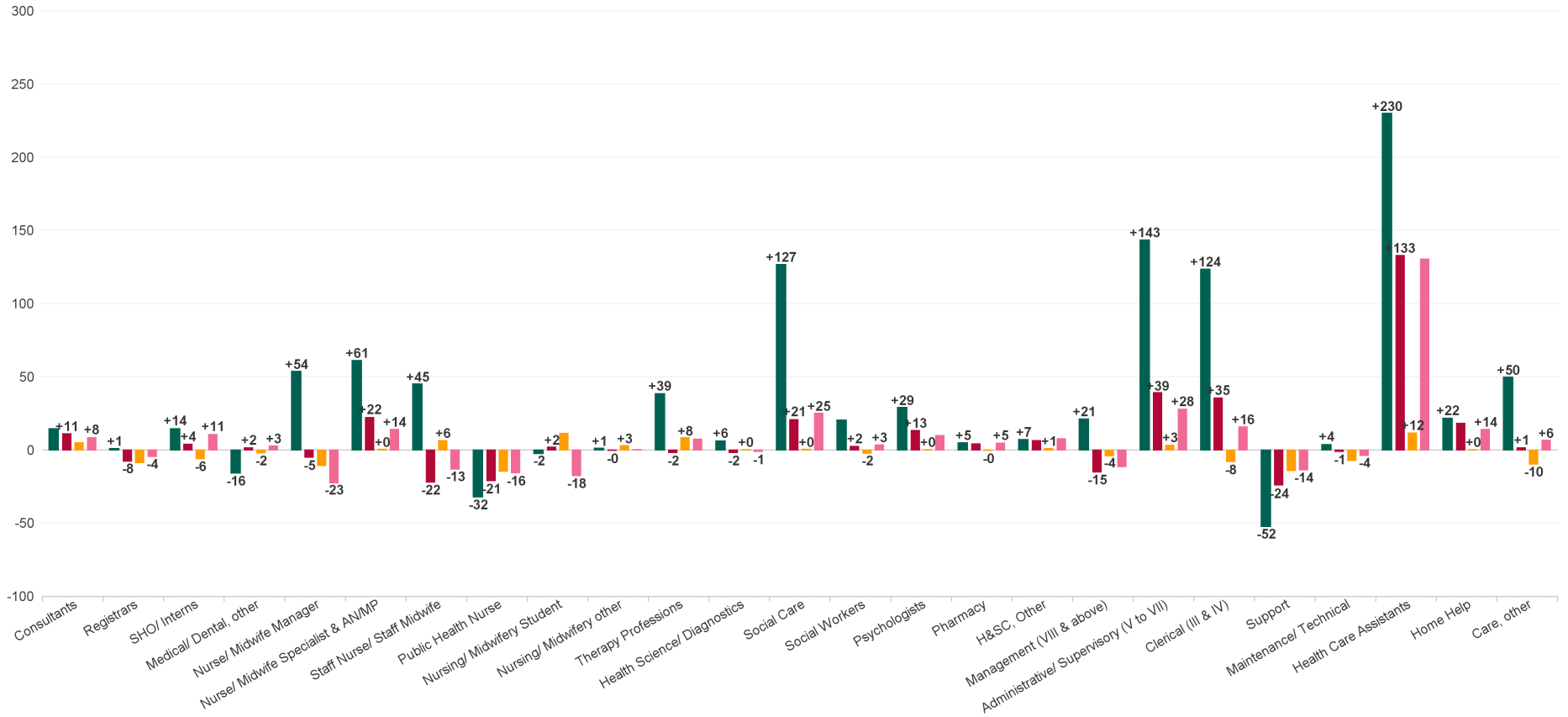


Employment by Grade Group MAY 2024	WTE DEC 2019	WTE DEC 2022	WTE DEC 2023	WTE APR 2024	WTE MAY 2024	WTE Change 2023	WTE Change 2024	WTE Change APR 2024	WTE Change Dec 2022 to MAY 2024	WTE Change Dec 2019 to MAY 2024	% WTE Change Dec 2022 to MAY 2024	No. MAY 2024
Overall	6,514	7,215	7,466	7,427	7,428	+251	-38	+1	+213	+913	2.96%	8,566
Social Workers	105	123	127	126	125	+5	-2	-1	+2	+20	1.87%	137
Social Workers	105	123	127	126	125	+5	-2	-1	+2	+20	1.87%	137
Psychologists	81	96	109	113	110	+13	+0	-3	+13	+29	13.71%	123
Psychologists	81	96	109	113	110	+13	+0	-3	+13	+29	13.71%	123
Pharmacists	35	34	38	38	37	+3	-1	-1	+2	+2	6.76%	43
Pharmacy Technicians	5	7	8	8	8	+1	+1	-0	+2	+3	25.91%	9
Pharmacy	40	41	45	46	45	+4	-0	-1	+4	+5	9.83%	52
Counsellor Therapists	36	36	37	38	37	+0	+1	-0	+1	+1	2.59%	41
Dental Hygienists	5	6	5	4	4	-1	-1	-0	-2	-1	-28.72%	6
Environmental Health Officers			1	1	1	+1	+0	+0	+1	+1	-100.00%	1
Other Health & Social Care	2	2	6	8	7	+3	+2	-0	+5	+5	222.94%	10
Play Therapists/ Specialists	1	1	3	1	2	+2	-1	+0	+1	+1	51.52%	2
Vaccinators					0		+0	+0	+0	+0	-100.00%	1
H&SC, Other	44	45	51	52	52	+5	+1	-1	+6	+7	13.72%	61
Health & Social Care Professionals	1,094	1,284		1,326	1,327	+35	+7	+0	+43	+233	3.31%	1,492
Executive Management	13	19	17	17	17	-2	-0	+0	-2	+4	-10.53%	17
Senior Management (VIII & GM)	60	90	81	75	77	-9	-4	+2	-13	+17	-14.58%	79
Management (VIII & above)	73	109	98	92	94	-11	-4	+2	-15	+21	-13.88%	96
Middle Management (V-VII)	181	287	323	325	326	+36	+3	+1	+39	+144	13.64%	340
Other Administrative	1									-1	-100.00%	
Administrative/ Supervisory (V to VII)	182	287	323	325	326	+36	+3	+1	+39	+143	13.64%	340
General Administrative (III & IV)	351	439	482	477	474	+43	-8	-3	+35	+124	8.07%	528
Clerical (III & IV)	351	439	482	477	474	+43	-8	-3	+35	+124	8.07%	528
Management & Administrative	606	834		895	894	+68	-9	-1	+59	+288	7.12%	964
Catering	59	49	54	51	50	+5	-4	-0	+1	-9	2.51%	54
Household Services	269	263	245	249	249	-18	+4	-1	-14	-20	-5.49%	334
Other Labs & Associated	1	1	1	1	1	+0	+0	+0	+0	+0	0.00%	1
Other Support	14	17	17	6	6	+0	-12	-0	-12	-8	-67.51%	8
Portering	67	52	55	54	53	+3	-2	-1	+1	-15	1.66%	56
Support	410	382	372	360	358	-10	-14	-2	-24	-52	-6.30%	453
Maintenance	37	39	44	38	39	+5	-5	+1	-0	+2	-0.46%	44
Technical Services	4	7	8	6	6	+1	-2	+0	-1	+2	-14.29%	6
Maintenance/ Technical	41	46	52	44	45	+6	-7	+1	-1	+4	-2.57%	50
General Support	452	428		404	403	-4	-22	-2	-25	-49	-5.90%	503
Attendant/ Aide	40	30	29	27	27	-0	-2	-0	-2	-12	-7.89%	42
Health Care Assistant/ Care Assistant	1,602	1,698	1,791	1,785	1,804	+94	+13	+19	+107	+202	6.28%	2,103
Health & Social Care Assistants	12	25	52	52	53	+28	+1	+1	+28	+41	114.91%	57
Health Care Assistants	1,655	1,752	1,873	1,865	1,885	+121	+12	+20	+133	+230	7.58%	2,202
Home Helps	127	131	148	149	149	+18	+0	-0	+18	+22	13.84%	243
Home Help	127	131	148	149	149	+18	+0	-0	+18	+22	13.84%	243
Health Promotion		27	30	30	30	+3	-0	+1	+3	+30	10.65%	32
Home Care Services	6	4	5	6	6	+1	+1	+0	+2	-0	43.89%	8
Other Care Grades	160	163	158	167	165	-4	+7	-2	+3	+6	1.68%	184
Pastoral Care	7	4	4	5	5	+0	+0	+0	+1	-2	18.93%	5
Workshop Services	438	460	471	457	453	+11	-18	-3	-7	+16	-1.50%	521
Care, other	610	659	670	664	660	+11	-10	-4	+1	+50	0.22%	750
Patient & Client Care	2,392	2,541		2,678	2,693	+150	+2	+15	+152	+301	5.99%	3,195



WTE Change by Staff Group

■ WTE change since DEC 2019
 ■ WTE change since DEC 2022
 ■ WTE change since DEC 2023
 ■ WTE change since MAY 2023



Employment Report by WTE, Headcount, Gender, Full-Time / Part-Time etc. MAY 2024

Demographic Grade Group MAY 2024	WTE MAY 2024	No. MAY 2024	WTE : No	Number Male %	Number Female %	Male WTE : No.	Female WTE : No	Perm Count %	Perm Count Male %	Perm Count Female %	Fulltime Count %	Part time Count %	FT Count Male %	FT Count Female %
Total	7,428	8,566	1:0.9	20.72%	79.28%	1:0.9	1:0.9	89.74%	18.34%	71.40%	72.09%	27.91%	84.56%	68.83%
Other Medical	35.82	60	1:0.6	31.67%	68.33%	1:0.6	1:0.6	85.00%	28.33%	56.67%	18.33%	81.67%	10.53%	21.95%
Senior Registrar	19.17	22	1:0.9	36.36%	63.64%	1:0.9	1:0.8				81.82%	18.18%	100.00%	71.43%
Consultant Psychiatry	66.17	69	1:1	34.78%	65.22%	1:1	1:0.9	63.77%	20.29%	43.48%	95.65%	4.35%	100.00%	93.33%
Interns	1.91	2	1:1		100.00%	1:	1:1				100.00%			100.00%
Registrar	70.89	73	1:1	34.25%	65.75%	1:1	1:1	2.74%	2.74%		100.00%		100.00%	100.00%
Senior House Officer	48.35	50	1:1	34.00%	66.00%	1:0.9	1:1	6.00%	4.00%	2.00%	100.00%		100.00%	100.00%
Specialist Registrar	5.75	7	1:0.8	42.86%	57.14%	1:0.6	1:1	14.29%	14.29%		100.00%		100.00%	100.00%
Consultant Medicine	8.01	9	1:0.9	33.33%	66.67%	1:0.9	1:0.9	88.89%	33.33%	55.56%	66.67%	33.33%	66.67%	66.67%
Dentists	28.87	36	1:0.8	8.33%	91.67%	1:1	1:0.8	100.00%	8.33%	91.67%	50.00%	50.00%	100.00%	45.45%
Medical & Dental	285	328	1:0.9	31.10%	68.90%	1:0.9	1:0.9	44.21%	12.80%	31.40%	76.52%	23.48%	82.35%	73.89%
Clinical Nurse/ Midwife Manager 2	225.62	243	1:0.9	11.11%	88.89%	1:1	1:0.9	95.06%	10.29%	84.77%	87.65%	12.35%	96.30%	86.57%
Clinical Nurse/ Midwife Specialist	125.02	139	1:0.9	9.35%	90.65%	1:1	1:0.9	99.28%	9.35%	89.93%	77.70%	22.30%	100.00%	75.40%
Pre-registration Nurse/ Midwife Intern	19.87	40	1:0.5	10.00%	90.00%	1:0.5	1:0.5	5.00%		5.00%	70.00%	30.00%	75.00%	69.44%
Public Health Nurse	143.18	184	1:0.8	1.09%	98.91%	1:0.9	1:0.8	97.28%	1.09%	96.20%	67.93%	32.07%	100.00%	67.58%
Staff Nurse [Intellectual Disability]	216.14	256	1:0.8	13.28%	86.72%	1:1	1:0.8	95.31%	12.89%	82.42%	70.70%	29.30%	94.12%	67.12%
Staff Nurse [Psychiatric]	200.54	220	1:0.9	21.36%	78.64%	1:0.9	1:0.9	92.27%	20.00%	72.27%	87.73%	12.27%	93.62%	86.13%
Staff Nurses [General/ Children's]	621.1	709	1:0.9	11.42%	88.58%	1:0.9	1:0.9	95.77%	10.72%	85.05%	73.48%	26.52%	87.65%	71.66%
Advanced Nurse/ Midwife Practitioner	19.27	20	1:1	15.00%	85.00%	1:1	1:1	100.00%	15.00%	85.00%	90.00%	10.00%	100.00%	88.24%
Clinical Nurse/ Midwife Manager 1	89.05	95	1:0.9	21.05%	78.95%	1:1	1:0.9	97.89%	21.05%	76.84%	88.42%	11.58%	95.00%	86.67%
Clinical Nurse/ Midwife Manager 3	37.61	42	1:0.9	9.52%	90.48%	1:1	1:0.9	100.00%	9.52%	90.48%	83.33%	16.67%	100.00%	81.58%
Director Nursing/Midwifery, Assistant	71.5	74	1:1	20.27%	79.73%	1:1	1:1	100.00%	20.27%	79.73%	94.59%	5.41%	100.00%	93.22%
Director of Nursing/Midwifery	25.79	27	1:1	18.52%	81.48%	1:1	1:0.9	100.00%	18.52%	81.48%	96.30%	3.70%	100.00%	95.45%
Nursing Education/Clinical	11.16	14	1:0.8		100.00%	1:	1:0.8	100.00%		100.00%	64.29%	35.71%		64.29%
Adv. Nurse/ Midwife, Candidate	10.67	11	1:1		100.00%	1:	1:1	100.00%		100.00%	100.00%			100.00%
Nursing/ Midwifery awaiting registration	0.92	1	1:0.9	100.00%		1:0.9	1:	100.00%	100.00%		100.00%		100.00%	
Post-registration Nurse/ Midwife Student	8.97	9	1:1	11.11%	88.89%	1:1	1:1	11.11%		11.11%	100.00%		100.00%	100.00%
Nursing & Midwifery	1,826	2,084	1:0.9	12.33%	87.67%	1:1	1:0.9	94.00%	11.56%	82.44%	78.31%	21.69%	93.00%	76.25%
Occupational Therapists	174.81	203	1:0.9	8.87%	91.13%	1:0.9	1:0.9	98.03%	8.87%	89.16%	77.83%	22.17%	83.33%	77.30%



Demographic Grade Group MAY 2024	WTE MAY 2024	No. MAY 2024	WTE : No	Number Male %	Number Female %	Male WTE : No.	Female WTE : No	Perm Count %	Perm Count Male %	Perm Count Female %	Fulltime Count %	Part time Count %	FT Count Male %	FT Count Female %
Total	7,428	8,566	1:0.9	20.72%	79.28%	1:0.9	1:0.9	89.74%	18.34%	71.40%	72.09%	27.91%	84.56%	68.83%
Pharmacists	36.64	43	1:0.9	18.60%	81.40%	1:1	1:0.8	65.12%	6.98%	58.14%	44.19%	55.81%	37.50%	45.71%
Pharmacy Technicians	8.26	9	1:0.9	11.11%	88.89%	1:1	1:0.9	55.56%	11.11%	44.44%	77.78%	22.22%	100.00%	75.00%
Physiotherapists	140.78	160	1:0.9	25.00%	75.00%	1:1	1:0.9	96.88%	24.38%	72.50%	81.25%	18.75%	95.00%	76.67%
Social Care	497.99	546	1:0.9	26.37%	73.63%	1:1	1:0.9	97.62%	25.82%	71.79%	71.98%	28.02%	86.11%	66.92%
Audiology	6	7	1:0.9	28.57%	71.43%	1:1	1:0.8	85.71%	28.57%	57.14%	85.71%	14.29%	100.00%	80.00%
Psychologists	109.64	123	1:0.9	19.51%	80.49%	1:1	1:0.9	94.31%	19.51%	74.80%	81.30%	18.70%	100.00%	76.77%
Social Workers	124.99	137	1:0.9	17.52%	82.48%	1:0.9	1:0.9	97.81%	16.06%	81.75%	85.40%	14.60%	95.83%	83.19%
Speech & Language Therapists	116.27	129	1:0.9	0.78%	99.22%	1:1	1:0.9	95.35%	0.78%	94.57%	84.50%	15.50%	100.00%	84.38%
Counsellor Therapists	37.26	41	1:0.9	36.59%	63.41%	1:1	1:0.9	100.00%	36.59%	63.41%	65.85%	34.15%	80.00%	57.69%
Dental Hygienists	4.07	6	1:0.7		100.00%	1:	1:0.7	100.00%		100.00%	33.33%	66.67%		33.33%
Dietitians	45.47	57	1:0.8	5.26%	94.74%	1:1	1:0.8	96.49%	5.26%	91.23%	64.91%	35.09%	100.00%	62.96%
Other Health & Social Care	7.46	10	1:0.7	40.00%	60.00%	1:0.9	1:0.6	100.00%	40.00%	60.00%	50.00%	50.00%	50.00%	50.00%
Phlebotomists	0.23	1	1:0.2		100.00%	1:	1:0.2	100.00%		100.00%		100.00%		
Play Therapists/ Specialists	1.5	2	1:0.8	100.00%		1:0.8	1:	100.00%	100.00%		50.00%	50.00%	50.00%	
Podiatrists & Chiropodists	8.52	10	1:0.9		100.00%	1:	1:0.9	100.00%		100.00%	70.00%	30.00%		70.00%
Vaccinators	0.26	1	1:0.3		100.00%	1:	1:0.3	100.00%		100.00%		100.00%		
Environmental Health Officers	1	1	1:1		100.00%	1:	1:1	100.00%		100.00%	100.00%			100.00%
Orthoptists	2.61	3	1:0.9	33.33%	66.67%	1:1	1:0.8	100.00%	33.33%	66.67%	100.00%		100.00%	100.00%
Radiographers	1	1	1:1		100.00%	1:	1:1	100.00%		100.00%	100.00%			100.00%
Respiratory Physiologists	2	2	1:1	100.00%		1:1	1:	100.00%	100.00%		100.00%		100.00%	
Health & Social Care Professionals	1,327	1,492	1:0.9	19.37%	80.63%	1:1	1:0.9	95.98%	18.63%	77.35%	75.40%	24.60%	87.20%	72.57%
General Administrative (III & IV)	474.12	528	1:0.9	14.39%	85.61%	1:1	1:0.9	88.07%	12.69%	75.38%	77.84%	22.16%	92.11%	75.44%
Middle Management (V-VII)	325.71	340	1:1	28.24%	71.76%	1:1	1:0.9	97.06%	27.35%	69.71%	91.76%	8.24%	98.96%	88.93%
Senior Management (VIII & GM)	77.07	79	1:1	25.32%	74.68%	1:1	1:1	98.73%	24.05%	74.68%	97.47%	2.53%	100.00%	96.61%
Executive Management	16.9	17	1:1	35.29%	64.71%	1:1	1:1	100.00%	35.29%	64.71%	100.00%		100.00%	100.00%
Management & Administrative	894	964	1:0.9	20.54%	79.46%	1:1	1:0.9	92.32%	19.19%	73.13%	84.75%	15.25%	96.46%	81.72%
Household Services	248.6	334	1:0.7	18.86%	81.14%	1:0.8	1:0.7	83.83%	14.67%	69.16%	34.43%	65.57%	60.32%	28.41%
Maintenance	38.77	44	1:0.9	88.64%	11.36%	1:0.9	1:0.8	88.64%	77.27%	11.36%	68.18%	31.82%	74.36%	20.00%
Other Support	5.65	8	1:0.7	50.00%	50.00%	1:0.7	1:0.8	87.50%	37.50%	50.00%	50.00%	50.00%	50.00%	50.00%
Catering	50.18	54	1:0.9	33.33%	66.67%	1:1	1:0.9	94.44%	31.48%	62.96%	72.22%	27.78%	88.89%	63.89%
Portering	52.57	56	1:0.9	87.50%	12.50%	1:1	1:0.7	85.71%	73.21%	12.50%	83.93%	16.07%	93.88%	14.29%
Other Labs & Associated	1	1	1:1		100.00%	1:	1:1	100.00%		100.00%	100.00%			100.00%
Technical Services	6	6	1:1	83.33%	16.67%	1:1	1:1	100.00%	83.33%	16.67%	100.00%		100.00%	100.00%



Demographic Grade Group MAY 2024	WTE MAY 2024	No. MAY 2024	WTE : No	Number Male %	Number Female %	Male WTE : No.	Female WTE : No	Perm Count %	Perm Count Male %	Perm Count Female %	Fulltime Count %	Part time Count %	FT Count Male %	FT Count Female %
Total	7,428	8,566	1:0.9	20.72%	79.28%	1:0.9	1:0.9	89.74%	18.34%	71.40%	72.09%	27.91%	84.56%	68.83%
General Support	403	503	1:0.8	35.39%	64.61%	1:0.9	1:0.8	85.88%	29.62%	56.26%	48.11%	51.89%	76.40%	32.62%
Attendant/ Aide	27.32	42	1:0.7	23.81%	76.19%	1:0.8	1:0.6	35.71%	4.76%	30.95%	52.38%	47.62%	70.00%	46.88%
Health & Social Care Assistants	53.19	57	1:0.9	19.30%	80.70%	1:0.9	1:0.9	64.91%	12.28%	52.63%	87.72%	12.28%	72.73%	91.30%
Health Care Assistant/ Care Assistant	1,804.22	2,103	1:0.9	24.25%	75.75%	1:0.9	1:0.8	88.54%	22.30%	66.24%	65.29%	34.71%	78.04%	61.21%
Home Care Services	6.36	8	1:0.8		100.00%	1:	1:0.8	87.50%		87.50%	62.50%	37.50%		62.50%
Home Helps	148.56	243	1:0.6	9.05%	90.95%	1:0.5	1:0.6	82.30%	5.76%	76.54%	31.28%	68.72%	36.36%	30.77%
Other Care Grades	165.37	184	1:0.9	33.70%	66.30%	1:1	1:0.9	95.65%	30.98%	64.67%	78.80%	21.20%	93.55%	71.31%
Workshop Services	453.31	521	1:0.9	24.57%	75.43%	1:0.9	1:0.9	95.20%	23.03%	72.17%	76.97%	23.03%	87.50%	73.54%
Pastoral Care	4.9	5	1:1	60.00%	40.00%	1:1	1:1	80.00%	40.00%	40.00%	100.00%		100.00%	100.00%
Health Promotion	30.03	32	1:0.9	15.63%	84.38%	1:1	1:0.9	100.00%	15.63%	84.38%	96.88%	3.13%	100.00%	96.30%
Patient & Client Care	2,693	3,195	1:0.8	23.51%	76.49%	1:0.9	1:0.8	88.54%	21.16%	67.39%	65.98%	34.02%	79.76%	61.74%



CHO 7 MAY 2024

Demographic Hospital MAY 2024	WTE MAY 2024	No. MAY 2024	WTE : No	Number Male %	Number Female %	Male WTE : No.	Female WTE : No	Perm Count %	Perm Count Male %	Perm Count Female %	Fulltime Count %	Part time Count %	FT Count Male %	FT Count Female %
Total	7,428	8,566	1:0.9	20.72%	79.28%	1:0.9	1:0.9	89.74%	18.34%	71.40%	72.09%	27.91%	84.56%	68.83%
Dublin South City	1,304	1,478	1:0.9	23.48%	76.52%	1:0.9	1:0.9	90.46%	20.64%	69.82%	76.52%	23.48%	89.05%	72.68%
Dublin South-West	1,652	1,883	1:0.9	20.71%	79.29%	1:0.9	1:0.9	94.80%	19.22%	75.57%	73.39%	26.61%	84.87%	70.40%
Dublin West	2,672	3,048	1:0.9	23.26%	76.74%	1:0.9	1:0.9	86.55%	20.51%	66.04%	75.10%	24.90%	87.59%	71.31%
Kildare/ West Wicklow	1,679	2,028	1:0.8	15.24%	84.76%	1:0.9	1:0.8	88.91%	12.82%	76.08%	61.83%	38.17%	71.20%	60.15%
Other CHO 7	122	129	1:0.9	15.50%	84.50%	1:1	1:0.9	96.12%	14.73%	81.40%	92.25%	7.75%	100.00%	90.83%



Month-on-Month Summary

WTE change since APR 2024		% WTE change since APR 2024	Overall	Consultants	Registrars	SHO/ Interns	Medical/ Dental/ other	Medical & Dental	Nurses/ Midwife/ Manager	Nurses/ Midwife/ Specialists & ANMP	Staff Nurses/ Staff Midwife	Public Health Nurse	Nursing/ Midwifery/ Student	Nursing/ Midwifery/ other	Nursing & Midwifery	Therapy Professionals	Health Science/ Diagnostics	Social Care	Social Workers	Psychologists	Pharmacy	H&SC, Other	Health & Social Care Professionals	Management (VII & above)	Administrative / Supervisory (V to VII)	Clerical (III & IV)	Management & Administrative	Support	Maintenance/ Technical	General Support	Health Care Assistants	Home Help	Care, other	Patients & Client Care
Overall		+0.61%	+1.1	+0.1	+0.7	-0.9	-0.5	-0.6	+2.0	-0.2	-2.3	-0.0	-2.2	+0.3	-11.5	-0.0	+0.6	+0.4	-0.7	-3.0	-1.4	-0.5	+0.4	+1.8	+0.7	-3.3	-0.7	-2.5	+0.7	-1.7	+20.0	-0.3	-4.4	+19.2
Dublin South City	46003	+0.12%	+1.6	-0.3	+0.5	-1.0	-0.1	-0.9	+1.8	-1.8	+2.4	-0.3	-0.2	+0.2	+2.1	-0.8	+0.0	+0.0	-0.7	-0.8	+0.9	+0.3	-1.2	+0.0	+0.9	-0.9	-0.0	-1.3	+0.0	-1.3	+3.0		-0.2	+2.8
Dublin South-West	46004	+0.00%	+0.0	+0.0	+0.0	-0.9	-0.9	-0.8	-1.0	-0.1	-3.5	+0.0	+0.1	-5.4	+1.8			-0.7	-1.1	-0.0	-0.1	+0.0	-0.0	+0.0	-1.0	-1.5	-2.4	-0.2	+0.7	+0.5	+7.6		+0.6	+8.2
Dublin West	46005	-0.38%	-10.3	-0.5	+0.3	-0.6	+0.8	-0.0	+3.3	-1.3	-5.2	-0.6	-2.0	+0.0	-5.8	+0.3	+0.0	+1.4	-0.5	-1.0	-2.3	-0.1	-2.2	-0.0	+1.3	-1.9	-0.7	-0.9	+0.0	-0.9	+3.9	+0.0	-4.6	-0.7
Kildare/ West Wicklow	46009	+0.63%	+10.4	+0.9	-0.0	+0.7	-0.4	+1.2	-1.3	+3.9	+0.7	-4.7	-0.0		-1.4	-1.4	+0.6	4.7	+1.6	-1.1	+0.0	-0.7	+3.7	+1.7	-0.6	+1.0	+2.1	-0.1	+0.0	-0.1	+5.5	-0.4	-0.2	+4.9
Other CHO 7	46040	-0.56%	-0.7				-0.0	-0.0	-1.0	+0.0					-1.0	+0.0			+0.0		+0.0		+0.0	+0.1	+0.1	+0.0	+0.3							

CHO 7 Employment Report: MAY 2024

Year-to-Date Summary

WTE change since DEC 2023	% WTE change since DEC 2023	Overall	Consultants	Registrars	SHO/ Interns	Medical/ Dental, other	Medical & Dental	Nurse/ Midwife Manager	Nurse/ Midwife Specialist & ANMP	Staff Nurse/ Staff Midwife	Public Health Nurse	Nursing/ Midwifery Student	Nursing/ Midwifery other	Nursing & Midwifery	Therapy Professions	Health Science/ Diagnostics	Social Care	Social Workers	Psychologists	Pharmacy	HASC Other	Health & Social Care Professionals	Management (VIII & above)	Administrative / Supervisory (V to VII)	Clerical (III & IV)	Management & Administrative	Support	Maintenance/ Technical	General Support	Health Care Assistants	Home Help	Care, other	Patient & Client Care
Overall	-0.56%	-38	+5	-9	-6	-2	-12	-11	+0	+6	-15	+11	+3	-5	+8	+0	+0	-2	+0	-0	+1	+7	-4	+3	-8	-9	-14	-7	-22	+12	+0	-10	+2
Dublin South City	+1.48%	+19	+1	-1	-1	+0	-1	+2	-8	+13	-0	+7	+3	+17	+3	+0	+1	-2	+2	+1	+0	+5	+0	+2	-4	-2	-1	+0	-1	-0	+2	+1	
Dublin South-West	-1.84%	-31	+0	+0	-0	-0	-0	-4	+4	+2	-6	+0	+0	-3	-1	-14	-1	-0	-0	+0	+0	-16	-0	-1	-4	-6	-13	-1	-13	+2		+6	+8
Dublin West	-0.97%	-26	+2	-11	-6	-1	-16	-7	-0	-15	-3	+4	+0	-20	+0	+0	+7	+2	-0	-1	+3	+11	-1	+5	-7	-3	+1	-7	-6	+20	+1	-13	+8
Kildare/ West Wicklow	+0.43%	+7	+2	+4	+1	-1	+5	-1	+3	+6	-6	-0		+2	+6	-0	+6	+1	-1	-0	-2	+10	-1	+0	+7	+6	-1	+0	-1	-11	-1	-4	-16
Other CHO 7	-5.24%	-7				+0	+0	-1	+1					+0	+0			-2	-1	+0		-3	-2	-2	+0	-4							



CHO 7 Employment Report: MAY 2024

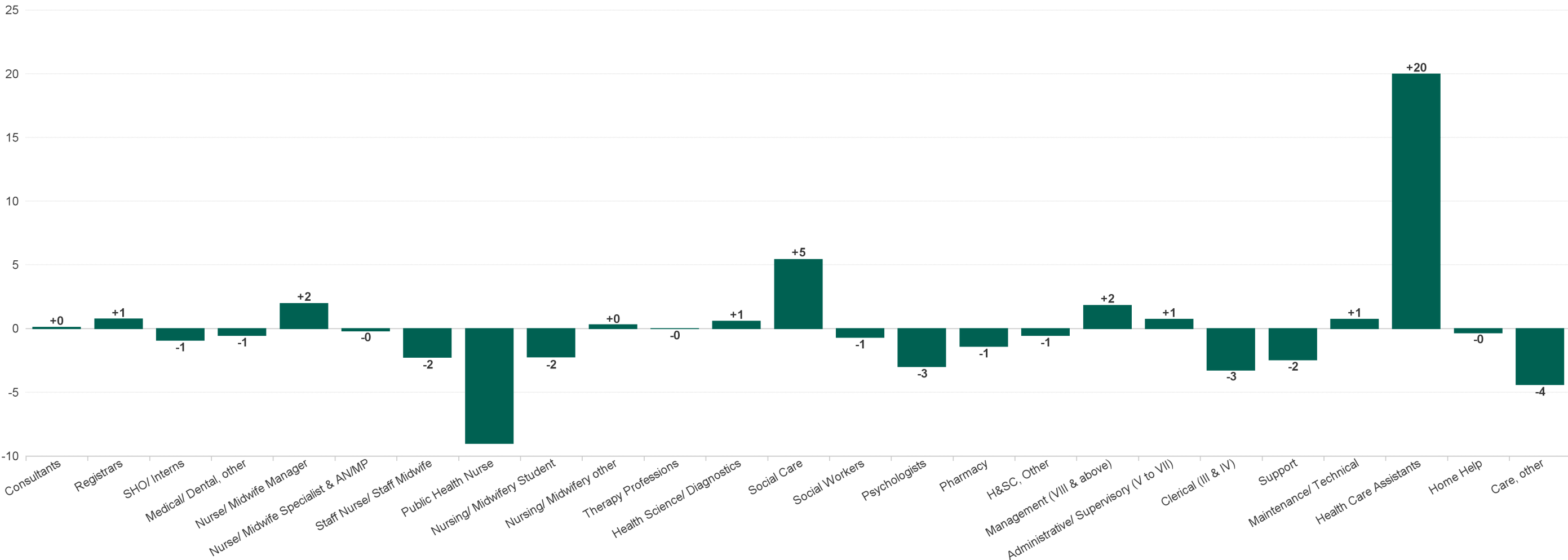
Year-on-Year Summary

WTE change since MAY 2023	% WTE change since MAY 2023	Overall	Consultants	Registrars	SHO/ Interns	Medical/ Dental, other	Medical & Dental	Nurse/ Midwife Manager	Nurse/ Midwife Specialist & AN/MP	Staff Nurse/ Staff Midwife	Public Health Nurse	Nursing/ Midwifery Student	Nursing/ Midwifery other	Nursing & Midwifery	Therapy Professions	Health Science/ Diagnostics	Social Care	Social Workers	Psychologists	Pharmacy	H&SC, Other	Health & Social Care Professionals	Management (VIII & above)	Administrative / Supervisory (V to VII)	Clerical (III & IV)	Management & Administrative	Support	Maintenance/ Technical	General Support	Health Care Assistants	Home Help	Care, other	Patient & Client Care
Overall	+2.54%	+184	+8	-4	+11	+3	+17	-23	+14	-13	-16	-18	+0	-55	+7	-1	+25	+3	+18	+5	+8	+57	-11	+28	+16	+32	-14	-4	-18	+130	+14	+6	+151
Dublin South City	+1.96%	+25	+4	-10	+9	+1	+5	-8	+3	+15	-4	-2	+0	+3	+3	-0	+1	+1	+2	+3	+1	+10	+0	+4	-4	+0	-7	-1	-8	+15		-0	+14
Dublin South-West	+0.67%	+11		+0		-0	-0	-0	+2	-12	-12	-2	+1	-23	-9		+7	-2	-1	+0	-2	-6	-1	+2	+5	+5	-14	-1	-15	+24		+25	+50
Dublin West	+2.27%	+59	+2	+5	+0	+1	+9	-15	+3	-22	+0	-10	+0	-43	+9	+0	+5	+3	-1	+2	+10	+29	-2	+10	+6	+14	+8	-3	+5	+57	+5	-16	+46
Kildare/ West Wicklow	+5.91%	+94	+2	-0	+1	+0	+3	+0	+5	+6	-0	-4		+7	+2	-2	+12	+3	+10	+0	-2	+23	-2	+12	+7	+17	-1	+1	+0	+36	+9	-2	+43
Other CHO 7	-4.03%	-5				+0	+0	+1	+1				-1	+1	+2			-2		+0		+0	-6	+0	+1	-4			-2				-2



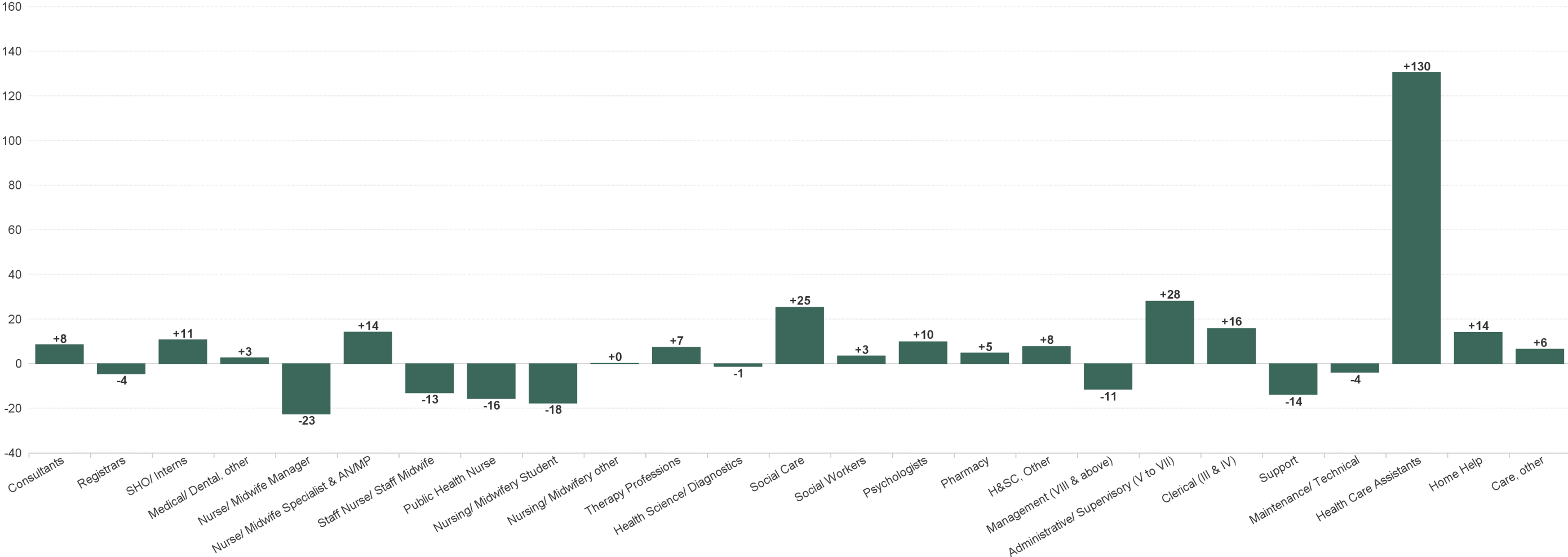
CHO 7 Employment Report: MAY 2024

Previous Month Summary Chart: Change since APR 2024



CHO 7 Employment Report: MAY 2024

Previous Year Summary Chart: Change since MAY 2023



CHO 7 Employment Report: MAY 2024

YTD Summary Chart: Change since DEC 2023

