

## CHO 6 Employment Report: MAY 2024

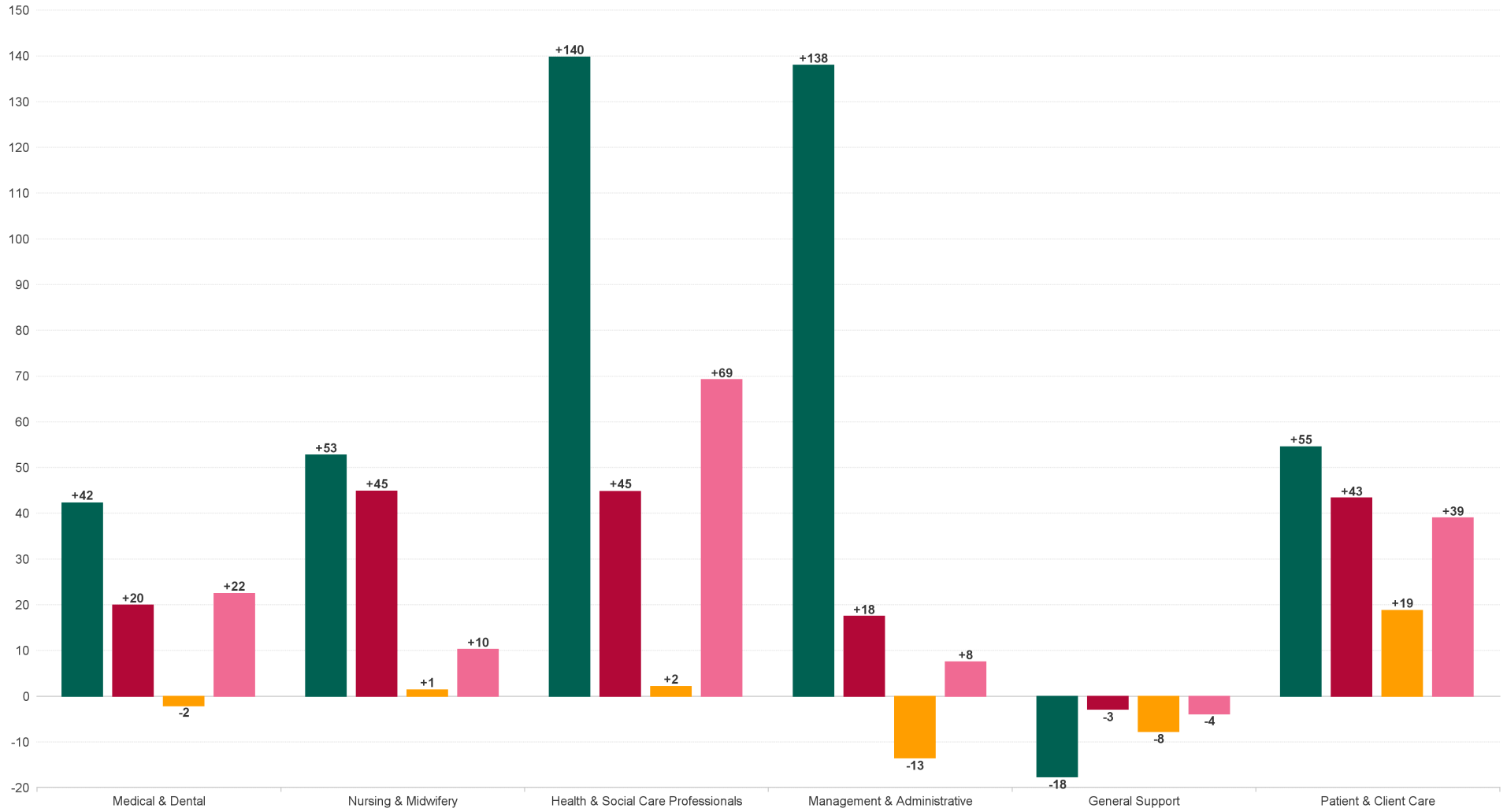
### Employment by Staff Group (1) MAY 2024

Employment by Staff Group (1) MAY 2024	WTE DEC 2019	WTE DEC 2022	WTE DEC 2023	WTE APR 2024	WTE MAY 2024	WTE Change 2023	WTE Change 2024	WTE Change APR 2024	WTE Change Dec 2022 to MAY 2024	WTE Change Dec 2019 to MAY 2024	% WTE Change Dec 2022 to MAY 2024	No. MAY 2024
<b>Overall</b>	<b>3,378</b>	<b>3,620</b>	<b>3,789</b>	<b>3,798</b>	<b>3,788</b>	<b>+169</b>	<b>-1</b>	<b>-10</b>	<b>+168</b>	<b>+410</b>	<b>4.63%</b>	<b>4,361</b>
Consultants	48	58	65	68	67	+7	+2	-0	+9	+19	15.67%	78
Registrars	49	63	76	74	74	+12	-2	+0	+11	+25	16.84%	80
SHO/ Interns	16	16	20	17	18	+4	-2	+1	+2	+2	11.30%	25
Medical/ Dental, other	51	49	47	47	47	-1	-0	-0	-2	-4	-3.36%	70
<b>Medical &amp; Dental</b>	<b>164</b>	<b>186</b>	<b>208</b>	<b>206</b>	<b>206</b>	<b>+22</b>	<b>-2</b>	<b>+0</b>	<b>+20</b>	<b>+42</b>	<b>10.73%</b>	<b>253</b>
Nurse/ Midwife Manager	211	210	221	215	215	+11	-6	-0	+5	+4	2.23%	226
Nurse/ Midwife Specialist & AN/MP	21	37	61	81	83	+25	+22	+2	+47	+63	127.65%	90
Staff Nurse/ Staff Midwife	542	556	567	554	552	+11	-15	-2	-4	+10	-0.68%	607
Public Health Nurse	117	99	98	97	91	-1	-7	-6	-8	-26	-7.82%	110
Post-registration Nurse/ Midwife Student	14	7	5.9	6	6	-1	+0	+0	-1	-8	-17.92%	6
Pre-registration Nurse/ Midwife Intern				7	7		+7	-0	+7	+7	-100.00%	14
Nursing/ Midwifery Student	14	7	6	13	13	-1	+7	-0	+6	-0	80.30%	20
Nursing/ Midwifery other	2	5	4	4	4	-1	-0	+0	-1	+2	-20.17%	5
<b>Nursing &amp; Midwifery</b>	<b>905</b>	<b>913</b>	<b>957</b>	<b>964</b>	<b>958</b>	<b>+43</b>	<b>+1</b>	<b>-6</b>	<b>+45</b>	<b>+53</b>	<b>4.91%</b>	<b>1,058</b>
Dietitians	15	22	27.61	29	29	+6	+1	+0	+7	+14	31.52%	35
Occupational Therapists	92	99	100.62	100	99	+2	-1	-1	+0	+8	0.43%	120
Orthoptists		2	2	2	2	+0	+0	+0	+0	+2	1.01%	2
Physiotherapists	60	68	82.83	82	81	+15	-2	-1	+13	+21	19.09%	96
Podiatrists & Chiropodists	2	2	1.2	2	2	-1	+1	-0	+0	+0	0.00%	3
Speech & Language Therapists	70	59	68.43	68	68	+9	-0	+1	+9	-2	15.28%	81
Therapy Professions	238	252	283	283	281	+31	-1	-1	+29	+43	11.65%	337
Health Science/ Diagnostics	18	17	17	17	17	+0	-0	+0	+0	-1	1.65%	20
Social Care	364	413	406	412	410	-8	+5	-1	-3	+46	-0.72%	469
Social Workers	57	71	70	67	68	-1	-3	+0	-4	+10	-5.06%	75
Psychologists	56	68	80	81	80	+13	-1	-1	+12	+24	17.82%	92
Pharmacy	4	9	7	8	8	-1	+0	-0	-1	+4	-14.35%	9
H&SC, Other	14	17	26	26	28	+9	+2	+1	+11	+13	65.13%	31
<b>Health &amp; Social Care Professionals</b>	<b>752</b>	<b>847</b>	<b>889</b>	<b>894</b>	<b>892</b>	<b>+43</b>	<b>+2</b>	<b>-2</b>	<b>+45</b>	<b>+140</b>	<b>5.29%</b>	<b>1,033</b>
Management (VIII & above)	68	95	89	83	87	-6	-3	+3	-9	+19	-9.10%	93
Administrative/ Supervisory (V to VII)	170	241	251	247	251	+10	+0	+4	+10	+81	4.14%	276
Clerical (III & IV)	237	259	286	281	275	+27	-11	-6	+16	+38	6.24%	320
<b>Management &amp; Administrative</b>	<b>475</b>	<b>596</b>	<b>627</b>	<b>612</b>	<b>613</b>	<b>+31</b>	<b>-13</b>	<b>+1</b>	<b>+18</b>	<b>+138</b>	<b>2.94%</b>	<b>689</b>
Support	191	177	180	176	174	+3	-6	-2	-3	-17	-1.51%	205
Maintenance/ Technical	23	22	24	22	22	+2	-2	+0	-0	-0	-0.80%	25
<b>General Support</b>	<b>214</b>	<b>199</b>	<b>204</b>	<b>198</b>	<b>196</b>	<b>+5</b>	<b>-8</b>	<b>-2</b>	<b>-3</b>	<b>-18</b>	<b>-1.43%</b>	<b>230</b>
Health Care Assistants	538	556	585	601	602	+29	+17	+1	+45	+63	8.16%	686
Care, other	330	324	319	324	322	-4	+2	-3	-2	-9	-0.62%	412
<b>Patient &amp; Client Care</b>	<b>869</b>	<b>880</b>	<b>904</b>	<b>925</b>	<b>923</b>	<b>+25</b>	<b>+19</b>	<b>-2</b>	<b>+43</b>	<b>+55</b>	<b>4.93%</b>	<b>1,098</b>



# WTE Change by Staff Category

■ WTE change since DEC 2019 ■ WTE change since DEC 2022 ■ WTE change since DEC 2023 ■ WTE change since MAY 2023

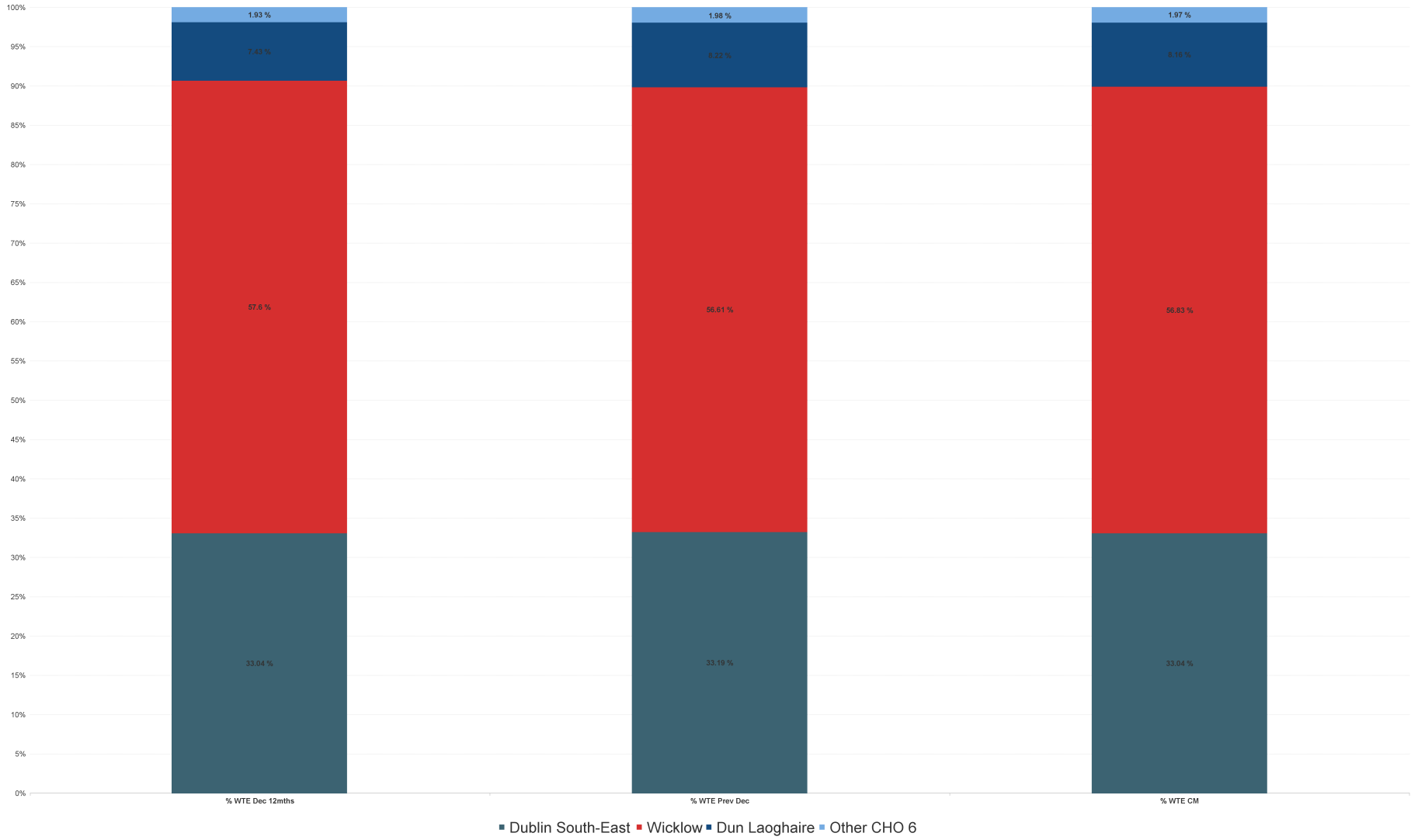


## Employment Report by Hospital: MAY 2024

Hospital MAY 2024	WTE DEC 2019	WTE DEC 2022	WTE DEC 2023	WTE APR 2024	WTE MAY 2024	WTE Change 2023	WTE Change 2024	WTE Change APR 2024	WTE Change Dec 2022 to MAY 2024	WTE Change Dec 2019 to MAY 2024	% WTE Change Dec 2022 to MAY 2024	No. MAY 2024
<b>Overall</b>	<b>3,378</b>	<b>3,620</b>	<b>3,789</b>	<b>3,798</b>	<b>3,788</b>	<b>+169</b>	<b>-1</b>	<b>-10</b>	<b>+168</b>	<b>+410</b>	<b>4.63%</b>	<b>4,361</b>
Dublin South-East	1,156	1,196	1,258	1,245	1,252	+61	-6	+6	+55	+96	4.63%	1,368
Wicklow	1,921	2,085	2,145	2,167	2,153	+60	+8	-14	+67	+232	3.24%	2,552
Dun Laoghaire	271	269	311	311	309	+42	-2	-2	+40	+38	14.93%	363
Other CHO 6	31	70	75	75	75	+5	-0	+0	+5	+44	6.50%	78



### % Total by Hospital



## Employment Report by HSE/S38: MAY 2024

Administration MAY 2024	WTE DEC 2019	WTE DEC 2022	WTE DEC 2023	WTE APR 2024	WTE MAY 2024	WTE Change 2023	WTE Change 2024	WTE Change APR 2024	WTE Change Dec 2022 to MAY 2024	WTE Change Dec 2019 to MAY 2024	% WTE Change Dec 2022 to MAY 2024	No. MAY 2024
<b>Overall</b>	<b>3,378</b>	<b>3,620</b>	<b>3,789</b>	<b>3,798</b>	<b>3,788</b>	<b>+169</b>	<b>-1</b>	<b>-10</b>	<b>+168</b>	<b>+410</b>	<b>4.63%</b>	<b>4,361</b>
Health Service Executive	1,605	1,772	1,909	1,922	1,914	+137	+5	-8	+142	+309	8.01%	2,160
Section 38 Voluntary Agencies	1,773	1,848	1,880	1,876	1,874	+32	-6	-2	+26	+101	1.39%	2,201



# Employment Report by Administration: MAY 2024

## Health Service Executive

MAY 2024	WTE DEC 2019	WTE DEC 2022	WTE DEC 2023	WTE APR 2024	WTE MAY 2024	WTE Change 2023	WTE Change 2024	WTE Change APR 2024	WTE Change Dec 2022 to MAY 2024	WTE Change Dec 2019 to MAY 2024	% WTE Change Dec 2022 to MAY 2024	No. MAY 2024
<b>Total Health Service Executive</b>	<b>1,605</b>	<b>1,772</b>	<b>1,909</b>	<b>1,922</b>	<b>1,914</b>	<b>+137</b>	<b>5</b>	<b>-8</b>	<b>+142</b>	<b>+309</b>	<b>8.01%</b>	<b>2,160</b>
Consultants	23	27	29	30	30	+2	+0	-0	+3	+7	9.95%	33
Registrars	30	41	57	54	55	+16	-2	+1	+14	+25	34.12%	57
SHO/ Interns	4	3	4	4	4	+1	-0	-0	+1	-0	31.99%	4
Medical/ Dental, other	49	48	45	46	46	-2	+1	-0	-2	-3	-3.43%	69
<b>Medical &amp; Dental</b>	<b>106</b>	<b>118</b>	<b>135</b>	<b>134</b>	<b>134</b>	<b>+17</b>	<b>-1</b>	<b>+0</b>	<b>+16</b>	<b>+28</b>	<b>13.49%</b>	<b>163</b>
Nurse/ Midwife Manager	138	138	142	138	138	+4	-4	-1	-0	+0	-0.31%	144
Nurse/ Midwife Specialist & AN/MP	15	20	40	60	61	+20	+21	+1	+41	+46	211.58%	64
Staff Nurse/ Staff Midwife	286	303	313	296	300	+10	-13	+4	-3	+14	-0.95%	336
Public Health Nurse	117	99	98	97	91	-1	-7	-6	-8	-26	-7.82%	110
Post-registration Nurse/ Midwife Student	14	7	+6	6	6	-6	+0	+0	-1	-8	-1	6
Pre-registration Nurse/ Midwife Intern				7	7		+7	+2	+7	+7	+7	14
Nursing/ Midwifery Student	14	7	6	13	13	-1	+7	-0	+6	-0	80.30%	20
Nursing/ Midwifery other	2	4	3	3	3	-1	-0	+0	-1	+1	-25.53%	4
<b>Nursing &amp; Midwifery</b>	<b>571</b>	<b>571</b>	<b>603</b>	<b>608</b>	<b>606</b>	<b>+32</b>	<b>+3</b>	<b>-2</b>	<b>+35</b>	<b>+35</b>	<b>6.19%</b>	<b>678</b>
Dietitians	12	19	+24	25	25	+8	+1	+5	+6	+14	+6	30
Occupational Therapists	61	63	+68	68	66	+2	-3	+2	+2	+4	+2	79
Orthoptists		2	+2	2	2	+2	+0	+0	+0	+2	+0	2
Physiotherapists	39	46	+61	64	63	+8	+2	+13	+17	+25	+17	77
Podiatrists & Chiroprodists	1	2	+1	2	2	+1	+1	-0	+0	+1	+0	2
Speech & Language Therapists	45	40	+51	50	51	-6	-0	+10	+11	+6	+11	61
Therapy Professions	158	173	208	212	209	+35	+2	-2	+36	+51	20.95%	251
Health Science/ Diagnostics	17	15	16	15	16	+0	-0	+0	+0	-1	1.81%	17
Social Care	11	11	14	14	15	+3	+1	+1	+4	+4	34.93%	16
Social Workers	26	39	38	38	38	-1	-0	-0	-1	+11	-2.93%	41
Psychologists	38	39	48	49	48	+9	+0	-1	+9	+10	22.98%	55
Pharmacy	2	7	5	5	5	-1	+0	+0	-1	+4	-17.35%	6
H&SC, Other	8	16	18	23	24	+2	+6	+1	+8	+15	50.35%	26
<b>Health &amp; Social Care Professionals</b>	<b>260</b>	<b>300</b>	<b>347</b>	<b>357</b>	<b>355</b>	<b>+47</b>	<b>+9</b>	<b>-2</b>	<b>+55</b>	<b>+95</b>	<b>18.38%</b>	<b>412</b>
Management (VIII & above)	35	53	54	50	52	+1	-1	+2	-1	+18	-1.11%	53
Administrative/ Supervisory (V to VII)	91	145	146	145	146	+1	-0	+1	+0	+55	0.25%	151
Clerical (III & IV)	134	162	179	184	180	+17	+1	-3	+18	+46	11.14%	201
<b>Management &amp; Administrative</b>	<b>260</b>	<b>361</b>	<b>379</b>	<b>378</b>	<b>379</b>	<b>+18</b>	<b>-1</b>	<b>+0</b>	<b>+18</b>	<b>+119</b>	<b>4.95%</b>	<b>405</b>
Support	85	73	73	71	68	-0	-5	-3	-5	-17	-6.55%	77
Maintenance/ Technical	3	2	1	1	1	-1	+0	+0	-1	-2	-49.49%	1
<b>General Support</b>	<b>88</b>	<b>75</b>	<b>74</b>	<b>72</b>	<b>69</b>	<b>-1</b>	<b>-5</b>	<b>-3</b>	<b>-6</b>	<b>-19</b>	<b>-7.68%</b>	<b>78</b>
Health Care Assistants	267	279	290	287	287	+11	-3	-1	+8	+20	2.87%	326
Care, other	54	68	81	85	84	+13	+3	-2	+15	+29	22.54%	98
<b>Patient &amp; Client Care</b>	<b>321</b>	<b>347</b>	<b>371</b>	<b>373</b>	<b>370</b>	<b>+24</b>	<b>-0</b>	<b>-2</b>	<b>+23</b>	<b>+50</b>	<b>6.75%</b>	<b>424</b>



## Section 38 Voluntary Agencies

MAY 2024	WTE DEC 2019	WTE DEC 2022	WTE DEC 2023	WTE APR 2024	WTE MAY 2024	WTE Change 2023	WTE Change 2024	WTE Change APR 2024	WTE Change Dec 2022 to MAY 2024	WTE Change Dec 2019 to MAY 2024	% WTE Change Dec 2022 to MAY 2024	No. MAY 2024
<b>Total Section 38 Voluntary Agencies</b>	<b>1,773</b>	<b>1,848</b>	<b>1,880</b>	<b>1,876</b>	<b>1,874</b>	<b>+32</b>	<b>-6</b>	<b>-2</b>	<b>+26</b>	<b>+101</b>	<b>1.39%</b>	<b>2,201</b>
Consultants	25	31	36	38	38	+5	+2	+0	+6	+12	20.58%	45
Registrars	19	22	19	20	19	-4	+1	-1	-3	+0	-14.66%	23
SHO/ Interns	12	13	16	13	14	+3	-2	+1	+1	+3	6.63%	21
Medical/ Dental, other	2	1	2	1	1	+1	-1	+0	+0	-1	0.00%	1
<b>Medical &amp; Dental</b>	<b>58</b>	<b>68</b>	<b>73</b>	<b>72</b>	<b>72</b>	<b>+5</b>	<b>-1</b>	<b>-0</b>	<b>+4</b>	<b>+14</b>	<b>5.91%</b>	<b>90</b>
Nurse/ Midwife Manager	73	71	78	76	77	+7	-2	+0	+5	+4	7.16%	82
Nurse/ Midwife Specialist & AN/MP	5	17	21	21	22	+4	+1	+1	+5	+17	31.10%	26
Staff Nurse/ Staff Midwife	256	253	253	258	252	+1	-2	-6	-1	-4	-0.34%	271
Nursing/ Midwifery other		1	1	1	1	+0	+0	+0	+0	+1	0.00%	1
<b>Nursing &amp; Midwifery</b>	<b>334</b>	<b>342</b>	<b>354</b>	<b>356</b>	<b>352</b>	<b>+12</b>	<b>-2</b>	<b>-4</b>	<b>+10</b>	<b>+17</b>	<b>2.79%</b>	<b>380</b>
<i>Dietitians</i>	3	3	+3	3	3	-0	-0	+1	+1	+1	+1	5
<i>Occupational Therapists</i>	31	35	+33	33	34	+5	+1	+4	-2	+3	-2	41
<i>Physiotherapists</i>	22	21	+22	17	18	-0	-4	-4	-4	-4	-4	19
<i>Podiatrists &amp; Chiropractists</i>	1	0	+0	0	0	-0	+0	+0	+0	-0	+0	1
<i>Speech &amp; Language Therapists</i>	25	19	+17	17	17	-5	-0	+1	-2	-7	-2	20
Therapy Professions	80	79	75	71	72	-4	-3	+1	-7	-8	-8.70%	86
Health Science/ Diagnostics	2	2	2	2	2	+0	+0	+0	+0	+0	0.00%	3
Social Care	353	402	391	397	395	-11	+4	-2	-7	+42	-1.71%	453
Social Workers	31	33	32	30	30	-0	-2	+0	-2	-1	-7.59%	34
Psychologists	18	28	32	32	31	+4	-1	-0	+3	+13	10.67%	37
Pharmacy	2	2	2	2	2	+0	-0	-0	-0	+0	-5.43%	3
H&SC, Other	6	1	8	4	4	+7	-4	+0	+3	-2	302.04%	5
<b>Health &amp; Social Care Professionals</b>	<b>492</b>	<b>547</b>	<b>543</b>	<b>537</b>	<b>536</b>	<b>-4</b>	<b>-7</b>	<b>-0</b>	<b>-10</b>	<b>+44</b>	<b>-1.90%</b>	<b>621</b>
Management (VIII & above)	33	42	35	33	34	-7	-1	+1	-8	+1	-19.14%	40
Administrative/ Supervisory (V to VII)	79	96	105	103	105	+9	+0	+3	+10	+26	10.06%	125
Clerical (III & IV)	103	97	107	97	95	+10	-12	-2	-2	-8	-1.96%	119
<b>Management &amp; Administrative</b>	<b>215</b>	<b>235</b>	<b>247</b>	<b>233</b>	<b>234</b>	<b>+13</b>	<b>-13</b>	<b>+1</b>	<b>-0</b>	<b>+19</b>	<b>-0.14%</b>	<b>284</b>
Support	106	104	107	105	106	+3	-1	+1	+2	-0	2.04%	128
Maintenance/ Technical	20	20	23	21	21	+3	-2	+0	+1	+1	3.92%	24
<b>General Support</b>	<b>126</b>	<b>124</b>	<b>130</b>	<b>126</b>	<b>127</b>	<b>+6</b>	<b>-3</b>	<b>+1</b>	<b>+3</b>	<b>+1</b>	<b>2.35%</b>	<b>152</b>
Health Care Assistants	272	278	295	314	315	+18	+20	+1	+37	+43	13.46%	360
Care, other	276	255	238	239	238	-17	-1	-1	-17	-38	-6.83%	314
<b>Patient &amp; Client Care</b>	<b>548</b>	<b>533</b>	<b>534</b>	<b>552</b>	<b>553</b>	<b>+1</b>	<b>+19</b>	<b>+0</b>	<b>+20</b>	<b>+5</b>	<b>3.74%</b>	<b>674</b>



## Employment Report by Hospital : MAY 2024

Dublin South-East	WTE DEC 2019	WTE DEC 2022	WTE DEC 2023	WTE APR 2024	WTE MAY 2024	WTE Change 2023	WTE Change 2024	WTE Change APR 2024	WTE Change Dec 2022 to MAY 2024	WTE Change Dec 2019 to MAY 2024	% WTE Change Dec 2022 to MAY 2024	No. MAY 2024
<b>Total Dublin South-East</b>	<b>1,156</b>	<b>1,196</b>	<b>1,258</b>	<b>1,245</b>	<b>1,252</b>	<b>+61</b>	<b>-6</b>	<b>+6</b>	<b>+55</b>	<b>+96</b>	<b>4.63%</b>	<b>1,368</b>
Consultants	12	15	17	20	20	+2	+3	-1	+5	+7	29.67%	23
Registrars	27	33	47	47	48	+14	+2	+1	+16	+21	47.71%	50
SHO/ Interns			1			+1	-1				-100.00%	
Medical/ Dental, other	18	15	15	14	14	+0	-2	-0	-1	-4	-9.87%	18
<b>Medical &amp; Dental</b>	<b>57</b>	<b>63</b>	<b>80</b>	<b>81</b>	<b>82</b>	<b>+17</b>	<b>+2</b>	<b>+1</b>	<b>+19</b>	<b>+25</b>	<b>29.64%</b>	<b>91</b>
Nurse/ Midwife Manager	100	89	101	99	101	+12	-1	+2	+12	+1	13.09%	103
Nurse/ Midwife Specialist & ANMP	9	15	21	31	31	+5	+10	+0	+15	+21	98.90%	32
Staff Nurse/ Staff Midwife	253	242	251	241	245	+9	-6	+4	+3	-8	1.11%	264
Public Health Nurse	41	30	34	34	32	+5	-2	-2	+2	-9	7.38%	37
<i>Post-registration Nurse/ Midwife Student</i>	6	3	3.9	3	3	+1	-1	+0	-0	-3	-10.45%	3
<i>Pre-registration Nurse/ Midwife Intern</i>				7	7		+7	-0	+7	+7	-100.00%	14
Nursing/ Midwifery Student	6	3	4	10	10	+1	+6	-0	+7	+4	203.88%	17
Nursing/ Midwifery other	2	4	3	3	3	-1	-0	+0	-1	+1	-25.53%	4
<b>Nursing &amp; Midwifery</b>	<b>411</b>	<b>384</b>	<b>414</b>	<b>418</b>	<b>421</b>	<b>+31</b>	<b>+7</b>	<b>+3</b>	<b>+38</b>	<b>+10</b>	<b>9.83%</b>	<b>457</b>
<i>Dietitians</i>	13	14	17.65	17	18	+4	+0	+1	+4	+5	27.81%	21
<i>Occupational Therapists</i>	37	44	42.82	41	39	-1	-4	-3	-5	+2	-12.15%	44
<i>Orthoptists</i>		2	2	2	2	+0	+0	+0	+0	+2	1.01%	2
<i>Physiotherapists</i>	28	32	33.85	30	30	+2	-4	-0	-2	+2	-7.49%	36
<i>Podiatrists &amp; Chiropodists</i>	2	1	0.2	1	1	-1	+1	-0	-0	-1	-0.84%	2
<i>Speech &amp; Language Therapists</i>	16	17	18.5	19	19	+1	+1	-0	+2	+3	10.68%	23
Therapy Professions	96	111	115	112	109	+4	-6	-3	-2	+13	-1.81%	128
Health Science/ Diagnostics	16	14	15	15	15	+0	-0	+0	+0	-1	1.86%	16
Social Care	4	4	4	5	5	+0	+1	-0	+1	+1	26.22%	5
Social Workers	23	28	22	24	23	-6	+2	-0	-4	+1	-15.66%	27
Psychologists	15	18	20	18	18	+2	-2	-0	-0	+3	-1.15%	21
Pharmacy	4	7	6	5	5	-1	-0	-0	-1	+2	-21.94%	6
H&SC, Other		5	3	5	5	-2	+2	+1	+1	+5	14.80%	6
<b>Health &amp; Social Care Professionals</b>	<b>157</b>	<b>186</b>	<b>184</b>	<b>182</b>	<b>180</b>	<b>-2</b>	<b>-4</b>	<b>-2</b>	<b>-6</b>	<b>+24</b>	<b>-3.23%</b>	<b>209</b>
Management (VIII & above)	13	23	20	18	21	-3	+1	+2	-2	+8	-10.62%	21
Administrative/ Supervisory (V to VII)	52	76	78	68	69	+2	-9	+1	-6	+17	-8.54%	71
Clerical (III & IV)	77	102	99	99	98	-3	-1	-2	-5	+21	-4.78%	109
<b>Management &amp; Administrative</b>	<b>142</b>	<b>201</b>	<b>197</b>	<b>186</b>	<b>187</b>	<b>-5</b>	<b>-9</b>	<b>+2</b>	<b>-14</b>	<b>+46</b>	<b>-6.86%</b>	<b>201</b>
Support	107	94	100	98	101	+6	+0	+3	+6	-6	6.68%	107
Maintenance/ Technical	8	7	8	9	9	+1	+1	+0	+2	+1	21.46%	9
<b>General Support</b>	<b>115</b>	<b>102</b>	<b>108</b>	<b>107</b>	<b>110</b>	<b>+6</b>	<b>+1</b>	<b>+3</b>	<b>+8</b>	<b>-5</b>	<b>7.76%</b>	<b>116</b>
Health Care Assistants	258	246	251	249	248	+5	-4	-2	+1	-10	0.52%	266
Care, other	16	14	23	22	23	+9	+1	+2	+10	+8	71.07%	28
<b>Patient &amp; Client Care</b>	<b>274</b>	<b>260</b>	<b>274</b>	<b>271</b>	<b>271</b>	<b>+14</b>	<b>-3</b>	<b>+0</b>	<b>+11</b>	<b>-2</b>	<b>4.23%</b>	<b>294</b>

Wicklow	WTE DEC 2019	WTE DEC 2022	WTE DEC 2023	WTE APR 2024	WTE MAY 2024	WTE Change 2023	WTE Change 2024	WTE Change APR 2024	WTE Change Dec 2022 to MAY 2024	WTE Change Dec 2019 to MAY 2024	% WTE Change Dec 2022 to MAY 2024	No. MAY 2024
---------	--------------	--------------	--------------	--------------	--------------	-----------------	-----------------	---------------------	---------------------------------	---------------------------------	-----------------------------------	--------------





<b>Total Wicklow</b>	<b>1,921</b>	<b>2,085</b>	<b>2,145</b>	<b>2,167</b>	<b>2,153</b>	<b>+60</b>	<b>+8</b>	<b>-14</b>	<b>+67</b>	<b>+232</b>	<b>3.24%</b>	<b>2,552</b>
Consultants	36	43	48	47	47	+5	-1	+0	+5	+12	10.70%	55
Registrars	22	31	29	27	26	-1	-3	-1	-5	+4	-16.21%	30
SHO/ Interns	16	16	19	17	18	+3	-1	+1	+2	+2	11.30%	25
Medical/ Dental, other	22	22	21	23	22	-1	+1	-1	+0	+0	0.50%	34
<b>Medical &amp; Dental</b>	<b>95</b>	<b>111</b>	<b>118</b>	<b>114</b>	<b>113</b>	<b>+6</b>	<b>-5</b>	<b>-1</b>	<b>+2</b>	<b>+18</b>	<b>1.40%</b>	<b>144</b>
Nurse/ Midwife Manager	90	92	93	86	85	+1	-8	-1	-7	-5	-7.46%	93
Nurse/ Midwife Specialist & AN/MP	10	21	35	45	47	+13	+12	+2	+25	+37	120.29%	52
Staff Nurse/ Staff Midwife	239	272	267	265	259	-4	-8	-5	-12	+21	-4.59%	287
Public Health Nurse	37	34	30	31	28	-4	-2	-3	-5	-9	-16.00%	34
<i>Post-registration Nurse/ Midwife Student</i>	3	3	2	3	3	-1	+1	+0	+0	+0	1.01%	3
Nursing/ Midwifery Student	3	3	2	3	3	-1	+1	+0	+0	+0	1.01%	3
Nursing/ Midwifery other		1	1	1	1	+0	+0	+0	+0	+1	0.00%	1
<b>Nursing &amp; Midwifery</b>	<b>379</b>	<b>423</b>	<b>428</b>	<b>431</b>	<b>423</b>	<b>+5</b>	<b>-5</b>	<b>-7</b>	<b>+1</b>	<b>+44</b>	<b>0.19%</b>	<b>470</b>
<i>Dietitians</i>	1	7	7.38	8	7	+1	-0	-0	+0	+6	7.08%	9
<i>Occupational Therapists</i>	43	42	42.86	41	44	+1	+1	+2	+1	+0	3.34%	55
<i>Physiotherapists</i>	19	19	27.57	29	29	+9	+2	+0	+10	+10	54.43%	35
<i>Podiatrists &amp; Chiropodists</i>		1	1	1	1	+0	+0	+0	+0	+1	1.01%	1
<i>Speech &amp; Language Therapists</i>	46	32	34.7	34	35	+2	-0	+0	+2	-11	6.84%	42
Therapy Professions	108	101	114	113	116	+12	+2	+2	+14	+7	14.20%	142
Health Science/ Diagnostics	2	2	3	2	3	+0	+0	+0	+0	+0	0.40%	4
Social Care	360	409	402	407	405	-8	+4	-1	-4	+45	-0.97%	464
Social Workers	33	34	38	34	35	+4	-3	+1	+1	+2	2.40%	38
Psychologists	37	45	49	52	51	+4	+3	-0	+7	+14	14.64%	60
Pharmacy			1	1	1	+1	+0	+0	+1	+1	-100.00%	2
H&SC, Other	10	5	12	9	9	+7	-3	-0	+4	-1	78.53%	11
<b>Health &amp; Social Care Professionals</b>	<b>552</b>	<b>597</b>	<b>617</b>	<b>618</b>	<b>620</b>	<b>+20</b>	<b>+3</b>	<b>+2</b>	<b>+23</b>	<b>+68</b>	<b>3.86%</b>	<b>721</b>
Management (VIII & above)	39	53	45	43	43	-8	-2	-0	-10	+4	-19.14%	49
Administrative/ Supervisory (V to VII)	88	119	123	131	133	+4	+11	+3	+14	+45	11.81%	154
Clerical (III & IV)	135	130	151	147	142	+21	-9	-4	+12	+7	9.25%	171
<b>Management &amp; Administrative</b>	<b>262</b>	<b>303</b>	<b>319</b>	<b>321</b>	<b>319</b>	<b>+16</b>	<b>-1</b>	<b>-2</b>	<b>+16</b>	<b>+56</b>	<b>5.26%</b>	<b>374</b>
Support	69	68	66	65	61	-2	-5	-4	-7	-8	-10.24%	84
Maintenance/ Technical	15	15	16	13	13	+1	-3	+0	-2	-1	-11.82%	16
<b>General Support</b>	<b>84</b>	<b>83</b>	<b>82</b>	<b>78</b>	<b>74</b>	<b>-1</b>	<b>-8</b>	<b>-4</b>	<b>-9</b>	<b>-9</b>	<b>-10.52%</b>	<b>100</b>
Health Care Assistants	246	276	299	318	320	+23	+21	+2	+44	+74	16.09%	379
Care, other	303	292	281	288	283	-11	+2	-5	-9	-20	-3.23%	364
<b>Patient &amp; Client Care</b>	<b>549</b>	<b>568</b>	<b>581</b>	<b>605</b>	<b>603</b>	<b>+12</b>	<b>+23</b>	<b>-2</b>	<b>+35</b>	<b>+54</b>	<b>6.15%</b>	<b>743</b>

Dun Laoghaire	WTE DEC 2019	WTE DEC 2022	WTE DEC 2023	WTE APR 2024	WTE MAY 2024	WTE Change 2023	WTE Change 2024	WTE Change APR 2024	WTE Change Dec 2022 to MAY 2024	WTE Change Dec 2019 to MAY 2024	% WTE Change Dec 2022 to MAY 2024	No. MAY 2024
<b>Total Dun Laoghaire</b>	<b>271</b>	<b>269</b>	<b>311</b>	<b>311</b>	<b>309</b>	<b>+42</b>	<b>-2</b>	<b>-2</b>	<b>+40</b>	<b>+38</b>	<b>14.93%</b>	<b>363</b>
Medical/ Dental, other	12	12	11	11	11	-1	+1	+0	-0	-1	-2.24%	18
<b>Medical &amp; Dental</b>	<b>12</b>	<b>12</b>	<b>11</b>	<b>11</b>	<b>11</b>	<b>-1</b>	<b>+1</b>	<b>+0</b>	<b>-0</b>	<b>-1</b>	<b>-2.24%</b>	<b>18</b>
Nurse/ Midwife Manager	20	27	25	27	27	-2	+2	+0	+1	+7	1.85%	28
Nurse/ Midwife Specialist & AN/MP	1		6	6	6	+6	+0	+0	+6	+5	-100.00%	6
Staff Nurse/ Staff Midwife	50	42	48	48	48	+7	-1	-0	+6	-3	14.55%	56
Public Health Nurse	38	35	34	32	31	-2	-3	-1	-5	-7	-12.76%	39
<i>Post-registration Nurse/ Midwife Student</i>	5	1				-1			-1	-5	-100.00%	
Nursing/ Midwifery Student	5	1				-1			-1	-5	-100.00%	
<b>Nursing &amp; Midwifery</b>	<b>114</b>	<b>105</b>	<b>113</b>	<b>113</b>	<b>112</b>	<b>+8</b>	<b>-1</b>	<b>-1</b>	<b>+7</b>	<b>-2</b>	<b>6.69%</b>	<b>129</b>
<i>Dietitians</i>	0	1	2.58	4	4	+2	+1	-0	+3	+3	239.05%	5
<i>Occupational Therapists</i>	11	13	14.94	18	17	+2	+2	-1	+4	+5	34.71%	21
<i>Physiotherapists</i>	14	17	21.41	23	22	+5	+0	-1	+5	+8	30.64%	25
<i>Speech &amp; Language Therapists</i>	8	10	15.23	14	15	+5	-0	+1	+5	+6	51.22%	16
Therapy Professions	34	40	54	58	57	+14	+3	-1	+17	+23	42.40%	67



Dun Laoghaire	WTE DEC 2019	WTE DEC 2022	WTE DEC 2023	WTE APR 2024	WTE MAY 2024	WTE Change 2023	WTE Change 2024	WTE Change APR 2024	WTE Change Dec 2022 to MAY 2024	WTE Change Dec 2019 to MAY 2024	% WTE Change Dec 2022 to MAY 2024	No. MAY 2024
<b>Total Dun Laoghaire</b>	<b>271</b>	<b>269</b>	<b>311</b>	<b>311</b>	<b>309</b>	<b>+42</b>	<b>-2</b>	<b>-2</b>	<b>+40</b>	<b>+38</b>	<b>14.93%</b>	<b>363</b>
Social Workers	2		1	1	1	+1	-0	-0	+1	-1	-100.00%	1
Psychologists	4	5	11	11	11	+7	-1	-1	+6	+7	119.58%	11
H&SC, Other	4	7	11	13	13	+4	+2	+0	+6	+9	89.75%	14
<b>Health &amp; Social Care Professionals</b>	<b>43</b>	<b>52</b>	<b>77</b>	<b>83</b>	<b>82</b>	<b>+25</b>	<b>+4</b>	<b>-1</b>	<b>+30</b>	<b>+39</b>	<b>57.40%</b>	<b>93</b>
Management (VIII & above)	5	5	6	5	5	+1	-1	+0	+0	+0	0.40%	5
Administrative/ Supervisory (V to VII)	10	13	15	14	14	+2	-1	+1	+1	+4	7.21%	15
Clerical (III & IV)	25	17	26	24	24	+9	-2	+0	+7	-1	43.22%	28
<b>Management &amp; Administrative</b>	<b>41</b>	<b>35</b>	<b>47</b>	<b>43</b>	<b>43</b>	<b>+12</b>	<b>-3</b>	<b>+1</b>	<b>+8</b>	<b>+3</b>	<b>23.50%</b>	<b>48</b>
Support	15	14	14	13	12	-1	-1	-1	-2	-3	-14.18%	14
<b>General Support</b>	<b>15</b>	<b>14</b>	<b>14</b>	<b>13</b>	<b>12</b>	<b>-1</b>	<b>-1</b>	<b>-1</b>	<b>-2</b>	<b>-3</b>	<b>-14.18%</b>	<b>14</b>
Health Care Assistants	35	34	34	34	34	+1	-1	+0	-0	-1	-0.91%	41
Care, other	11	17	15	15	15	-2	-0	+0	-2	+4	-13.25%	20
<b>Patient &amp; Client Care</b>	<b>46</b>	<b>51</b>	<b>50</b>	<b>49</b>	<b>49</b>	<b>-2</b>	<b>-1</b>	<b>+0</b>	<b>-3</b>	<b>+3</b>	<b>-5.10%</b>	<b>61</b>

Other CHO 6	WTE DEC 2019	WTE DEC 2022	WTE DEC 2023	WTE APR 2024	WTE MAY 2024	WTE Change 2023	WTE Change 2024	WTE Change APR 2024	WTE Change Dec 2022 to MAY 2024	WTE Change Dec 2019 to MAY 2024	% WTE Change Dec 2022 to MAY 2024	No. MAY 2024
<b>Total Other CHO 6</b>	<b>31</b>	<b>70</b>	<b>75</b>	<b>75</b>	<b>75</b>	<b>+5</b>	<b>-0</b>	<b>+0</b>	<b>+5</b>	<b>+44</b>	<b>6.50%</b>	<b>78</b>
Nurse/ Midwife Manager		2	1	2	1	-1	+0	-1	-1	+1	-32.32%	2
Public Health Nurse	0									-0	-100.00%	
Nursing & Midwifery	0	2	1	2	1	-1	+0	-1	-1	+1	-32.32%	2
Social Workers		9	9	9	9	-0	-1	-0	-1	+9	-9.43%	9
Pharmacy		2	1	1	1	-1	+0	+0	-1	+1	-51.92%	1
<b>Health &amp; Social Care Professionals</b>		<b>12</b>	<b>10</b>	<b>10</b>	<b>10</b>	<b>-1</b>	<b>-1</b>	<b>-0</b>	<b>-2</b>	<b>+10</b>	<b>-17.10%</b>	<b>10</b>
Management (VIII & above)	11	14	18	17	18	+4	-0	+1	+4	+7	28.64%	18
Administrative/ Supervisory (V to VII)	20	33	35	35	35	+2	-1	-0	+1	+15	4.32%	36
Clerical (III & IV)		10	11	11	11	+1	+1	-0	+2	+11	18.37%	12
<b>Management &amp; Administrative</b>	<b>30</b>	<b>57</b>	<b>64</b>	<b>63</b>	<b>64</b>	<b>+7</b>	<b>-0</b>	<b>+1</b>	<b>+7</b>	<b>+33</b>	<b>12.67%</b>	<b>66</b>

# Employment Report by Grade Group: MAY 2024

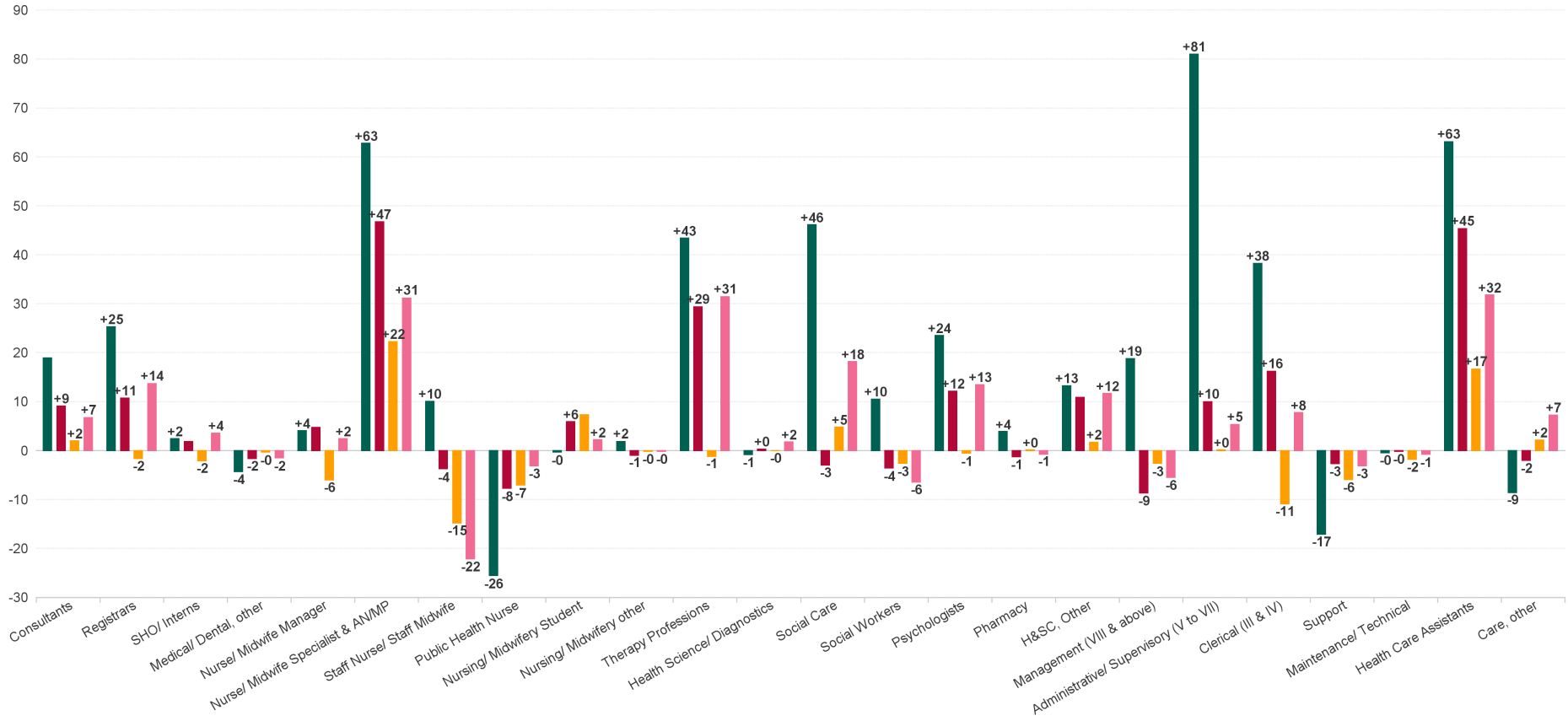
Employment by Grade Group MAY 2024	WTE DEC 2019	WTE DEC 2022	WTE DEC 2023	WTE APR 2024	WTE MAY 2024	WTE Change 2023	WTE Change 2024	WTE Change APR 2024	WTE Change Dec 2022 to MAY 2024	WTE Change Dec 2019 to MAY 2024	% WTE Change Dec 2022 to MAY 2024	No. MAY 2024
<b>Overall</b>	<b>3,378</b>	<b>3,620</b>	<b>3,789</b>	<b>3,798</b>	<b>3,788</b>	<b>+169</b>	<b>-1</b>	<b>-10</b>	<b>+168</b>	<b>+410</b>	<b>4.63%</b>	<b>4,361</b>
Consultant Dentistry	7	6	8	8	9	+2	+1	+0	+2	+1	34.07%	10
Consultant Medicine	1	3	2	3	3	-1	+1	+0	-0	+2	-0.78%	3
Consultant Pathology			1	1	1	+1	+0	+0	+1	+1	-100.00%	1
Consultant Psychiatry	39	48	54	55	54	+5	+0	-0	+6	+15	12.37%	63
Consultant Radiology	1	1	1	1	1	+0	+0	+0	+0	+0	0.00%	1
<b>Consultants</b>	<b>48</b>	<b>58</b>	<b>65</b>	<b>68</b>	<b>67</b>	<b>+7</b>	<b>+2</b>	<b>-0</b>	<b>+9</b>	<b>+19</b>	<b>15.67%</b>	<b>78</b>
Registrar	40	51	62	59	59	+11	-3	+0	+8	+19	16.12%	62
Senior Registrar	7	12	12	13	13	+0	+1	+0	+1	+6	12.81%	16
Specialist Registrar	1	1	2	2	2	+1	+0	+0	+1	+1	100.00%	2
<b>Registrars</b>	<b>49</b>	<b>63</b>	<b>76</b>	<b>74</b>	<b>74</b>	<b>+12</b>	<b>-2</b>	<b>+0</b>	<b>+11</b>	<b>+25</b>	<b>16.84%</b>	<b>80</b>
Senior House Officer	16	16	20	17	18	+4	-2	+1	+2	+2	11.30%	25
<b>SHO/ Interns</b>	<b>16</b>	<b>16</b>	<b>20</b>	<b>17</b>	<b>18</b>	<b>+4</b>	<b>-2</b>	<b>+1</b>	<b>+2</b>	<b>+2</b>	<b>11.30%</b>	<b>25</b>
Dentists	27	26	25	27	27	-1	+1	-0	+0	+0	0.99%	37
Other Medical	25	22	22	20	20	-0	-2	+0	-2	-4	-8.51%	33
<b>Medical/ Dental, other</b>	<b>51</b>	<b>49</b>	<b>47</b>	<b>47</b>	<b>47</b>	<b>-1</b>	<b>-0</b>	<b>-0</b>	<b>-2</b>	<b>-4</b>	<b>-3.36%</b>	<b>70</b>
<b>Medical &amp; Dental</b>	<b>164</b>	<b>186</b>		<b>206</b>	<b>206</b>	<b>+22</b>	<b>-2</b>	<b>+0</b>	<b>+20</b>	<b>+42</b>	<b>10.73%</b>	<b>253</b>
Clinical Nurse/ Midwife Manager 1	52	47	45	43	46	-2	+1	+2	-1	-6	-2.41%	47
Clinical Nurse/ Midwife Manager 2	91	87	88	83	82	+1	-6	-1	-5	-10	-5.93%	85
Clinical Nurse/ Midwife Manager 3	18	23	24	22	22	+1	-2	+0	-1	+5	-2.88%	24
Director Nursing/Midwifery, Assistant	35	37	46	49	48	+8	+3	-1	+11	+13	29.11%	52
Director of Nursing/Midwifery	14	16	18	18	17	+2	-1	-1	+1	+2	4.79%	18
<b>Nurse/ Midwife Manager</b>	<b>211</b>	<b>210</b>	<b>221</b>	<b>215</b>	<b>215</b>	<b>+11</b>	<b>-6</b>	<b>-0</b>	<b>+5</b>	<b>+4</b>	<b>2.23%</b>	<b>226</b>
Advanced Nurse/ Midwife Practitioner	1	2	4	5	5	+1	+1	+0	+3	+4	109.28%	5
Adv. Nurse/ Midwife, Candidate	0	3	11	11	11	+8	-0	-0	+8	+10	301.13%	11
Clinical Nurse/ Midwife Spec., Candidate			1	1	1	+1	+0	+0	+1	+1	-100.00%	1
Clinical Nurse/ Midwife Specialist	20	32	46	65	67	+14	+21	+2	+35	+47	111.32%	73
<b>Nurse/ Midwife Specialist &amp; AN/MP</b>	<b>21</b>	<b>37</b>	<b>61</b>	<b>81</b>	<b>83</b>	<b>+25</b>	<b>+22</b>	<b>+2</b>	<b>+47</b>	<b>+63</b>	<b>127.65%</b>	<b>90</b>
Staff Midwives			1	1	1	+1	+0	+0	+1	+1	-100.00%	1
Staff Nurse [Intellectual Disability]	50	78	79	81	82	+2	+2	+1	+4	+32	5.16%	89
Staff Nurse [Psychiatric]	133	125	125	113	109	-1	-16	-5	-17	-24	-13.26%	117
Staff Nurses [General/ Children's]	359	353	362	359	361	+9	-1	+2	+8	+1	2.22%	400
<b>Staff Nurse/ Staff Midwife</b>	<b>542</b>	<b>556</b>	<b>567</b>	<b>554</b>	<b>552</b>	<b>+11</b>	<b>-15</b>	<b>-2</b>	<b>-4</b>	<b>+10</b>	<b>-0.68%</b>	<b>607</b>
Public Health Nurse	117	99	98	97	91	-1	-7	-6	-8	-26	-7.82%	110
<b>Public Health Nurse</b>	<b>117</b>	<b>99</b>	<b>98</b>	<b>97</b>	<b>91</b>	<b>-1</b>	<b>-7</b>	<b>-6</b>	<b>-8</b>	<b>-26</b>	<b>-7.82%</b>	<b>110</b>
Post-registration Nurse/ Midwife Student	14	7	6	6	6	-1	+0	+0	-1	-8	-17.92%	6
Pre-registration Nurse/ Midwife Intern				7	7		+7	-0	+7	+7	-100.00%	14
<b>Nursing/ Midwifery Student</b>	<b>14</b>	<b>7</b>	<b>6</b>	<b>13</b>	<b>13</b>	<b>-1</b>	<b>+7</b>	<b>-0</b>	<b>+6</b>	<b>-0</b>	<b>80.30%</b>	<b>20</b>
Nursing Education/Clinical	2	5	4	4	4	-1	-0	+0	-1	+2	-20.17%	5
<b>Nursing/ Midwifery other</b>	<b>2</b>	<b>5</b>	<b>4</b>	<b>4</b>	<b>4</b>	<b>-1</b>	<b>-0</b>	<b>+0</b>	<b>-1</b>	<b>+2</b>	<b>-20.17%</b>	<b>5</b>
<b>Nursing &amp; Midwifery</b>	<b>905</b>	<b>913</b>		<b>964</b>	<b>958</b>	<b>+43</b>	<b>+1</b>	<b>-6</b>	<b>+45</b>	<b>+53</b>	<b>4.91%</b>	<b>1,058</b>
Dietitians	15	22	28	29	29	+6	+1	+0	+7	+14	31.52%	35
Occupational Therapists	92	99	101	100	99	+2	-1	-1	+0	+8	0.43%	120
Orthoptists		2	2	2	2	+0	+0	+0	+0	+2	1.01%	2
Physiotherapists	60	68	83	82	81	+15	-2	-1	+13	+21	19.09%	96
Podiatrists & Chiroprodists	2	2	1	2	2	-1	+1	-0	+0	+0	0.00%	3
Speech & Language Therapists	70	59	68	68	68	+9	-0	+1	+9	-2	15.28%	81
<b>Therapy Professions</b>	<b>238</b>	<b>252</b>	<b>283</b>	<b>283</b>	<b>281</b>	<b>+31</b>	<b>-1</b>	<b>-1</b>	<b>+29</b>	<b>+43</b>	<b>11.65%</b>	<b>337</b>
Medical Science	16	14	15	15	15	+0	-0	+0	+0	-1	1.86%	16
Radiographers	2	2	3	2	3	+0	+0	+0	+0	+0	0.40%	4
<b>Health Science/ Diagnostics</b>	<b>18</b>	<b>17</b>	<b>17</b>	<b>17</b>	<b>17</b>	<b>+0</b>	<b>-0</b>	<b>+0</b>	<b>+0</b>	<b>-1</b>	<b>1.65%</b>	<b>20</b>
Social Care	364	413	406	412	410	-8	+5	-1	-3	+46	-0.72%	469
<b>Social Care</b>	<b>364</b>	<b>413</b>	<b>406</b>	<b>412</b>	<b>410</b>	<b>-8</b>	<b>+5</b>	<b>-1</b>	<b>-3</b>	<b>+46</b>	<b>-0.72%</b>	<b>469</b>
Social Workers	57	71	70	67	68	-1	-3	+0	-4	+10	-5.06%	75
<b>Social Workers</b>	<b>57</b>	<b>71</b>	<b>70</b>	<b>67</b>	<b>68</b>	<b>-1</b>	<b>-3</b>	<b>+0</b>	<b>-4</b>	<b>+10</b>	<b>-5.06%</b>	<b>75</b>



Employment by Grade Group MAY 2024	WTE DEC 2019	WTE DEC 2022	WTE DEC 2023	WTE APR 2024	WTE MAY 2024	WTE Change 2023	WTE Change 2024	WTE Change APR 2024	WTE Change Dec 2022 to MAY 2024	WTE Change Dec 2019 to MAY 2024	% WTE Change Dec 2022 to MAY 2024	No. MAY 2024
<b>Overall</b>	<b>3,378</b>	<b>3,620</b>	<b>3,789</b>	<b>3,798</b>	<b>3,788</b>	<b>+169</b>	<b>-1</b>	<b>-10</b>	<b>+168</b>	<b>+410</b>	<b>4.63%</b>	<b>4,361</b>
Psychologists	56	68	80	81	80	+13	-1	-1	+12	+24	17.82%	92
<b>Psychologists</b>	<b>56</b>	<b>68</b>	<b>80</b>	<b>81</b>	<b>80</b>	<b>+13</b>	<b>-1</b>	<b>-1</b>	<b>+12</b>	<b>+24</b>	<b>17.82%</b>	<b>92</b>
Pharmacists	3	8	6	7	7	-1	+0	-0	-1	+4	-16.30%	8
Pharmacy Technicians	1	1	1	1	1	+0	+0	+0	+0	+0	1.01%	1
<b>Pharmacy</b>	<b>4</b>	<b>9</b>	<b>7</b>	<b>8</b>	<b>8</b>	<b>-1</b>	<b>+0</b>	<b>-0</b>	<b>-1</b>	<b>+4</b>	<b>-14.35%</b>	<b>9</b>
Counsellor Therapists	4	6	13	17	17	+7	+4	-0	+11	+12	181.82%	18
Dental Hygienists	4	5	5	5	5	-0	-0	-0	-0	+1	-1.37%	6
HSCP Trainees/Students			4			+4	-4				-100.00%	
Other Health & Social Care	6	5	4	4	5	-2	+2	+1	+0	-0	2.71%	6
Play Therapists/ Specialists	0	0	1	0	0	+0	-0	+0	+0	+0	0.00%	1
<b>H&amp;SC, Other</b>	<b>14</b>	<b>17</b>	<b>26</b>	<b>26</b>	<b>28</b>	<b>+9</b>	<b>+2</b>	<b>+1</b>	<b>+11</b>	<b>+13</b>	<b>65.13%</b>	<b>31</b>
<b>Health &amp; Social Care Professionals</b>	<b>752</b>	<b>847</b>		<b>894</b>	<b>892</b>	<b>+43</b>	<b>+2</b>	<b>-2</b>	<b>+45</b>	<b>+140</b>	<b>5.29%</b>	<b>1,033</b>
Executive Management	24	34	18	16	15	-16	-3	-1	-19	-8	-55.58%	16
Senior Management (VIII & GM)	44	61	71	68	71	+10	+1	+4	+10	+27	16.77%	77
<b>Management (VIII &amp; above)</b>	<b>68</b>	<b>95</b>	<b>89</b>	<b>83</b>	<b>87</b>	<b>-6</b>	<b>-3</b>	<b>+3</b>	<b>-9</b>	<b>+19</b>	<b>-9.10%</b>	<b>93</b>
Middle Management (V-VII)	169	241	251	247	251	+10	+0	+4	+10	+82	4.14%	276
Other Administrative	1									-1	-100.00%	
<b>Administrative/ Supervisory (V to VII)</b>	<b>170</b>	<b>241</b>	<b>251</b>	<b>247</b>	<b>251</b>	<b>+10</b>	<b>+0</b>	<b>+4</b>	<b>+10</b>	<b>+81</b>	<b>4.14%</b>	<b>276</b>
General Administrative (III & IV)	237	259	286	281	275	+27	-11	-6	+16	+38	6.24%	320
<b>Clerical (III &amp; IV)</b>	<b>237</b>	<b>259</b>	<b>286</b>	<b>281</b>	<b>275</b>	<b>+27</b>	<b>-11</b>	<b>-6</b>	<b>+16</b>	<b>+38</b>	<b>6.24%</b>	<b>320</b>
<b>Management &amp; Administrative</b>	<b>475</b>	<b>596</b>		<b>612</b>	<b>613</b>	<b>+31</b>	<b>-13</b>	<b>+1</b>	<b>+18</b>	<b>+138</b>	<b>2.94%</b>	<b>689</b>
Catering	26	24	28	29	28	+4	+0	-1	+4	+2	17.59%	30
Household Services	121	107	100	96	95	-7	-6	-1	-13	-26	-11.71%	111
Other Labs & Associated	1	1	4	4	4	+3	+0	-0	+3	+3	383.54%	4
Other Support	19	24	22	22	21	-2	-1	-0	-2	+2	-10.17%	32
Portering	24	21	25	25	26	+5	+0	+0	+5	+2	24.78%	28
<b>Support</b>	<b>191</b>	<b>177</b>	<b>180</b>	<b>176</b>	<b>174</b>	<b>+3</b>	<b>-6</b>	<b>-2</b>	<b>-3</b>	<b>-17</b>	<b>-1.51%</b>	<b>205</b>
Maintenance	23	17	19	18	18	+2	-1	+0	+1	-4	4.72%	21
Technical Services		5	5	4	4	+0	-1	+0	-1	+4	-20.00%	4
<b>Maintenance/ Technical</b>	<b>23</b>	<b>22</b>	<b>24</b>	<b>22</b>	<b>22</b>	<b>+2</b>	<b>-2</b>	<b>+0</b>	<b>-0</b>	<b>-0</b>	<b>-0.80%</b>	<b>25</b>
<b>General Support</b>	<b>214</b>	<b>199</b>		<b>198</b>	<b>196</b>	<b>+5</b>	<b>-8</b>	<b>-2</b>	<b>-3</b>	<b>-18</b>	<b>-1.43%</b>	<b>230</b>
Attendant/ Aide	138	26	27	27	26	+1	-0	-1	+0	-112	1.76%	36
Health Care Assistant/ Care Assistant	389	519	536	547	550	+18	+13	+3	+31	+161	5.98%	623
Health & Social Care Assistants	11	12	22	27	26	+10	+4	-2	+14	+14	118.13%	27
<b>Health Care Assistants</b>	<b>538</b>	<b>556</b>	<b>585</b>	<b>601</b>	<b>602</b>	<b>+29</b>	<b>+17</b>	<b>+1</b>	<b>+45</b>	<b>+63</b>	<b>8.16%</b>	<b>686</b>
Health Promotion		1	16	18	17	+15	+1	-1	+16	+17	3,216.00%	17
Home Care Services		1	1	1	1	+0	+0	+0	+0	+1	1.01%	1
Other Care Grades	104	112	105	106	107	-7	+1	+1	-5	+2	-4.75%	153
Pastoral Care	5	4	4	4	3	+0	-1	-0	-1	-2	-20.88%	6
Workshop Services	221	206	193	196	194	-13	+1	-2	-12	-27	-5.80%	235
<b>Care, other</b>	<b>330</b>	<b>324</b>	<b>319</b>	<b>324</b>	<b>322</b>	<b>-4</b>	<b>+2</b>	<b>-3</b>	<b>-2</b>	<b>-9</b>	<b>-0.62%</b>	<b>412</b>
<b>Patient &amp; Client Care</b>	<b>869</b>	<b>880</b>		<b>925</b>	<b>923</b>	<b>+25</b>	<b>+19</b>	<b>-2</b>	<b>+43</b>	<b>+55</b>	<b>4.93%</b>	<b>1,098</b>

# WTE Change by Staff Group

■ WTE change since DEC 2019 
 ■ WTE change since DEC 2022 
 ■ WTE change since DEC 2023 
 ■ WTE change since MAY 2023



## Employment Report by WTE, Headcount, Gender, Full-Time / Part-Time etc. MAY 2024

Demographic Grade Group MAY 2024	WTE MAY 2024	No. MAY 2024	WTE : No	Number Male %	Number Female %	Male WTE : No.	Female WTE : No	Perm Count %	Perm Count Male %	Perm Count Female %	Fulltime Count %	Part time Count %	FT Count Male %	FT Count Female %
<b>Total</b>	<b>3,788</b>	<b>4,361</b>	<b>1:0.9</b>	<b>22.54%</b>	<b>77.46%</b>	<b>1:0.9</b>	<b>1:0.9</b>	<b>89.80%</b>	<b>19.67%</b>	<b>70.12%</b>	<b>74.80%</b>	<b>25.20%</b>	<b>86.98%</b>	<b>71.26%</b>
Consultant Psychiatry	54.15	63	1:0.9	39.68%	60.32%	1:0.9	1:0.8	84.13%	38.10%	46.03%	76.19%	23.81%	88.00%	68.42%
Registrar	58.99	62	1:1	29.03%	70.97%	1:1	1:0.9	3.23%		3.23%	95.16%	4.84%	100.00%	93.18%
Other Medical	20.32	33	1:0.6	15.15%	84.85%	1:0.5	1:0.6	78.79%	9.09%	69.70%	30.30%	69.70%	40.00%	28.57%
Senior House Officer	17.92	25	1:0.7	20.00%	80.00%	1:0.6	1:0.7				100.00%		100.00%	100.00%
Senior Registrar	13.03	16	1:0.8	43.75%	56.25%	1:0.9	1:0.8	12.50%		12.50%	87.50%	12.50%	100.00%	77.78%
Consultant Dentistry	8.5	10	1:0.9	50.00%	50.00%	1:0.8	1:0.9	100.00%	50.00%	50.00%	70.00%	30.00%	80.00%	60.00%
Consultant Medicine	2.53	3	1:0.8		100.00%	1:	1:0.8	100.00%		100.00%	66.67%	33.33%		66.67%
Dentists	26.58	37	1:0.7	27.03%	72.97%	1:0.6	1:0.8	100.00%	27.03%	72.97%	37.84%	62.16%	40.00%	37.04%
Consultant Pathology	1	1	1:1		100.00%	1:	1:1	100.00%		100.00%	100.00%			100.00%
Consultant Radiology	1	1	1:1	100.00%		1:1	1:	100.00%	100.00%		100.00%		100.00%	
Specialist Registrar	2	2	1:1	50.00%	50.00%	1:1	1:1	50.00%		50.00%	100.00%		100.00%	100.00%
<b>Medical &amp; Dental</b>	<b>206</b>	<b>253</b>	<b>1:0.8</b>	<b>30.43%</b>	<b>69.57%</b>	<b>1:0.8</b>	<b>1:0.8</b>	<b>53.75%</b>	<b>17.00%</b>	<b>36.76%</b>	<b>72.33%</b>	<b>27.67%</b>	<b>83.12%</b>	<b>67.61%</b>
Staff Nurse [Intellectual Disability]	81.52	89	1:0.9	22.47%	77.53%	1:1	1:0.9	92.13%	19.10%	73.03%	86.52%	13.48%	95.00%	84.06%
Staff Nurses [General/ Children's]	360.69	400	1:0.9	14.25%	85.75%	1:0.9	1:0.9	92.00%	11.50%	80.50%	79.50%	20.50%	85.96%	78.43%
Clinical Nurse/ Midwife Manager 1	45.84	47	1:1	23.40%	76.60%	1:1	1:1	95.74%	23.40%	72.34%	95.74%	4.26%	100.00%	94.44%
Clinical Nurse/ Midwife Manager 3	22.23	24	1:0.9	25.00%	75.00%	1:1	1:0.9	95.83%	25.00%	70.83%	91.67%	8.33%	100.00%	88.89%
Pre-registration Nurse/ Midwife Intern	7.18	14	1:0.5	21.43%	78.57%	1:0.5	1:0.5				100.00%		100.00%	100.00%
Staff Nurse [Psychiatric]	108.61	117	1:0.9	27.35%	72.65%	1:0.9	1:0.9	91.45%	24.79%	66.67%	87.18%	12.82%	87.50%	87.06%
Clinical Nurse/ Midwife Manager 2	81.53	85	1:1	22.35%	77.65%	1:1	1:1	98.82%	22.35%	76.47%	97.65%	2.35%	100.00%	96.97%
Clinical Nurse/ Midwife Specialist	66.82	73	1:0.9	12.33%	87.67%	1:1	1:0.9	100.00%	12.33%	87.67%	82.19%	17.81%	100.00%	79.69%
Director Nursing/Midwifery, Assistant	48.12	52	1:0.9	17.31%	82.69%	1:0.9	1:0.9	96.15%	15.38%	80.77%	94.23%	5.77%	100.00%	93.02%
Director of Nursing/Midwifery	16.83	18	1:0.9	11.11%	88.89%	1:1	1:0.9	94.44%	11.11%	83.33%	88.89%	11.11%	100.00%	87.50%
Public Health Nurse	91.18	110	1:0.8		100.00%	1:	1:0.8	98.18%		98.18%	75.45%	24.55%		75.45%
Adv. Nurse/ Midwife, Candidate	10.63	11	1:1	9.09%	90.91%	1:1	1:1	63.64%		63.64%	90.91%	9.09%	100.00%	90.00%
Advanced Nurse/ Midwife Practitioner	4.96	5	1:1		100.00%	1:	1:1	80.00%		80.00%	100.00%			100.00%
Clinical Nurse/ Midwife Spec., Candidate	1	1	1:1		100.00%	1:	1:1	100.00%		100.00%	100.00%			100.00%
Nursing Education/Clinical	3.8	5	1:0.8	40.00%	60.00%	1:1	1:0.6	100.00%	40.00%	60.00%	100.00%		100.00%	100.00%
Post-registration Nurse/ Midwife Student	6	6	1:1		100.00%	1:	1:1	16.67%		16.67%	100.00%			100.00%



Demographic Grade Group MAY 2024	WTE MAY 2024	No. MAY 2024	WTE : No	Number Male %	Number Female %	Male WTE : No.	Female WTE : No	Perm Count %	Perm Count Male %	Perm Count Female %	Fulltime Count %	Part time Count %	FT Count Male %	FT Count Female %
<b>Total</b>	<b>3,788</b>	<b>4,361</b>	<b>1:0.9</b>	<b>22.54%</b>	<b>77.46%</b>	<b>1:0.9</b>	<b>1:0.9</b>	<b>89.80%</b>	<b>19.67%</b>	<b>70.12%</b>	<b>74.80%</b>	<b>25.20%</b>	<b>86.98%</b>	<b>71.26%</b>
Staff Midwives	1	1	1:1		100.00%	1:	1:1	100.00%		100.00%	100.00%			100.00%
<b>Nursing &amp; Midwifery</b>	<b>958</b>	<b>1,058</b>	<b>1:0.9</b>	<b>16.16%</b>	<b>83.84%</b>	<b>1:0.9</b>	<b>1:0.9</b>	<b>92.25%</b>	<b>14.08%</b>	<b>78.17%</b>	<b>84.78%</b>	<b>15.22%</b>	<b>92.40%</b>	<b>83.31%</b>
Psychologists	79.93	92	1:0.9	11.96%	88.04%	1:0.9	1:0.9	83.70%	9.78%	73.91%	72.83%	27.17%	72.73%	72.84%
Social Care	410.28	469	1:0.9	21.75%	78.25%	1:0.9	1:0.9	89.98%	20.04%	69.94%	61.62%	38.38%	76.47%	57.49%
Social Workers	67.58	75	1:0.9	10.67%	89.33%	1:1	1:0.9	96.00%	10.67%	85.33%	81.33%	18.67%	100.00%	79.10%
Speech & Language Therapists	68.41	81	1:0.8	3.70%	96.30%	1:1	1:0.8	93.83%	3.70%	90.12%	65.43%	34.57%	100.00%	64.10%
Medical Science	14.75	16	1:0.9	31.25%	68.75%	1:0.9	1:0.9	93.75%	31.25%	62.50%	87.50%	12.50%	80.00%	90.91%
Occupational Therapists	99.31	120	1:0.8	6.67%	93.33%	1:0.9	1:0.8	98.33%	6.67%	91.67%	70.00%	30.00%	87.50%	68.75%
Counsellor Therapists	16.74	18	1:0.9	22.22%	77.78%	1:1	1:0.9	100.00%	22.22%	77.78%	94.44%	5.56%	100.00%	92.86%
Dental Hygienists	5.03	6	1:0.8		100.00%	1:	1:0.8	66.67%		66.67%	66.67%	33.33%		66.67%
Dietitians	28.79	35	1:0.8	2.86%	97.14%	1:1	1:0.8	100.00%	2.86%	97.14%	71.43%	28.57%	100.00%	70.59%
Other Health & Social Care	5.31	6	1:0.9	33.33%	66.67%	1:1	1:0.8	100.00%	33.33%	66.67%	83.33%	16.67%	100.00%	75.00%
Pharmacists	6.52	8	1:0.8	12.50%	87.50%	1:1	1:0.8	100.00%	12.50%	87.50%	75.00%	25.00%	100.00%	71.43%
Physiotherapists	80.79	96	1:0.8	21.88%	78.13%	1:0.9	1:0.8	95.83%	18.75%	77.08%	68.75%	31.25%	85.71%	64.00%
Play Therapists/ Specialists	0.48	1	1:0.5		100.00%	1:	1:0.5	100.00%		100.00%		100.00%		
Podiatrists & Chiropodists	2.18	3	1:0.7		100.00%	1:	1:0.7	100.00%		100.00%	66.67%	33.33%		66.67%
Orthoptists	2	2	1:1		100.00%	1:	1:1	100.00%		100.00%	100.00%			100.00%
Pharmacy Technicians	1	1	1:1		100.00%	1:	1:1	100.00%		100.00%	100.00%			100.00%
Radiographers	2.5	4	1:0.6	50.00%	50.00%	1:0.8	1:0.5	100.00%	50.00%	50.00%	100.00%		100.00%	100.00%
<b>Health &amp; Social Care Professionals</b>	<b>892</b>	<b>1,033</b>	<b>1:0.9</b>	<b>16.26%</b>	<b>83.74%</b>	<b>1:0.9</b>	<b>1:0.9</b>	<b>92.35%</b>	<b>15.00%</b>	<b>77.35%</b>	<b>67.76%</b>	<b>32.24%</b>	<b>80.95%</b>	<b>65.20%</b>
General Administrative (III & IV)	275.33	320	1:0.9	17.81%	82.19%	1:0.9	1:0.8	89.69%	15.94%	73.75%	75.31%	24.69%	85.96%	73.00%
Middle Management (V-VII)	251.16	276	1:0.9	24.64%	75.36%	1:0.9	1:0.9	94.93%	23.55%	71.38%	87.68%	12.32%	95.59%	85.10%
Senior Management (VIII & GM)	71.43	77	1:0.9	40.26%	59.74%	1:0.9	1:1	97.40%	37.66%	59.74%	98.70%	1.30%	96.77%	100.00%
Executive Management	15.12	16	1:0.9	25.00%	75.00%	1:1	1:0.9	100.00%	25.00%	75.00%	100.00%		100.00%	100.00%
<b>Management &amp; Administrative</b>	<b>613</b>	<b>689</b>	<b>1:0.9</b>	<b>23.22%</b>	<b>76.78%</b>	<b>1:0.9</b>	<b>1:0.9</b>	<b>92.89%</b>	<b>21.63%</b>	<b>71.26%</b>	<b>83.45%</b>	<b>16.55%</b>	<b>92.50%</b>	<b>80.72%</b>
Household Services	94.83	111	1:0.9	33.33%	66.67%	1:0.9	1:0.8	91.89%	31.53%	60.36%	63.96%	36.04%	81.08%	55.41%
Other Support	21.42	32	1:0.7	56.25%	43.75%	1:0.7	1:0.7	90.63%	50.00%	40.63%	62.50%	37.50%	72.22%	50.00%
Maintenance	18.21	21	1:0.9	100.00%		1:0.9	1:	90.48%	90.48%		100.00%		100.00%	
Catering	28.15	30	1:0.9	53.33%	46.67%	1:1	1:0.9	86.67%	43.33%	43.33%	80.00%	20.00%	93.75%	64.29%
Portering	25.68	28	1:0.9	100.00%		1:0.9	1:	92.86%	92.86%		92.86%	7.14%	92.86%	
Other Labs & Associated	3.82	4	1:1		100.00%	1:	1:1	100.00%		100.00%	100.00%			100.00%
Technical Services	4	4	1:1	100.00%		1:1	1:	100.00%	100.00%		100.00%		100.00%	
<b>General Support</b>	<b>196</b>	<b>230</b>	<b>1:0.9</b>	<b>53.91%</b>	<b>46.09%</b>	<b>1:0.9</b>	<b>1:0.8</b>	<b>91.30%</b>	<b>49.13%</b>	<b>42.17%</b>	<b>73.91%</b>	<b>26.09%</b>	<b>87.90%</b>	<b>57.55%</b>



Demographic Grade Group MAY 2024	WTE MAY 2024	No. MAY 2024	WTE : No	Number Male %	Number Female %	Male WTE : No.	Female WTE : No	Perm Count %	Perm Count Male %	Perm Count Female %	Fulltime Count %	Part time Count %	FT Count Male %	FT Count Female %
<b>Total</b>	<b>3,788</b>	<b>4,361</b>	<b>1:0.9</b>	<b>22.54%</b>	<b>77.46%</b>	<b>1:0.9</b>	<b>1:0.9</b>	<b>89.80%</b>	<b>19.67%</b>	<b>70.12%</b>	<b>74.80%</b>	<b>25.20%</b>	<b>86.98%</b>	<b>71.26%</b>
Health Care Assistant/ Care Assistant	549.83	623	1:0.9	31.46%	68.54%	1:0.9	1:0.9	91.81%	27.93%	63.88%	68.86%	31.14%	88.27%	59.95%
Workshop Services	194.26	235	1:0.8	22.98%	77.02%	1:0.9	1:0.8	90.64%	20.85%	69.79%	64.68%	35.32%	74.07%	61.88%
Health & Social Care Assistants	25.63	27	1:0.9	29.63%	70.37%	1:1	1:0.9	62.96%	18.52%	44.44%	92.59%	7.41%	100.00%	89.47%
Other Care Grades	106.5	153	1:0.7	6.54%	93.46%	1:1	1:0.7	98.69%	6.54%	92.16%	67.97%	32.03%	100.00%	65.73%
Attendant/ Aide	26.09	36	1:0.7	11.11%	88.89%	1:0.8	1:0.7	66.67%	2.78%	63.89%	22.22%	77.78%	50.00%	18.75%
Pastoral Care	3.22	6	1:0.5	83.33%	16.67%	1:0.5	1:0.5	83.33%	66.67%	16.67%	16.67%	83.33%	20.00%	
Health Promotion	16.58	17	1:1	29.41%	70.59%	1:1	1:1	100.00%	29.41%	70.59%	100.00%		100.00%	100.00%
Home Care Services	1	1	1:1	100.00%		1:1	1:	100.00%	100.00%		100.00%		100.00%	
<b>Patient &amp; Client Care</b>	<b>923</b>	<b>1,098</b>	<b>1:0.8</b>	<b>25.77%</b>	<b>74.23%</b>	<b>1:0.9</b>	<b>1:0.8</b>	<b>91.07%</b>	<b>22.68%</b>	<b>68.40%</b>	<b>67.12%</b>	<b>32.88%</b>	<b>84.81%</b>	<b>60.98%</b>





CHO 6 MAY 2024

Demographic Hospital MAY 2024	WTE MAY 2024	No. MAY 2024	WTE : No	Number Male %	Number Female %	Male WTE : No.	Female WTE : No	Perm Count %	Perm Count Male %	Perm Count Female %	Fulltime Count %	Part time Count %	FT Count Male %	FT Count Female %
<b>Total</b>	<b>3,788</b>	<b>4,361</b>	<b>1:0.9</b>	<b>22.54%</b>	<b>77.46%</b>	<b>1:0.9</b>	<b>1:0.9</b>	<b>89.80%</b>	<b>19.67%</b>	<b>70.12%</b>	<b>74.80%</b>	<b>25.20%</b>	<b>86.98%</b>	<b>71.26%</b>
Dublin South-East	1,252	1,368	1:0.9	25.95%	74.05%	1:1	1:0.9	91.01%	23.54%	67.47%	83.11%	16.89%	92.39%	79.86%
Dun Laoghaire	309	363	1:0.9	11.85%	88.15%	1:0.9	1:0.8	92.84%	11.02%	81.82%	66.94%	33.06%	88.37%	64.06%
Other CHO 6	75	78	1:1	21.79%	78.21%	1:1	1:0.9	97.44%	20.51%	76.92%	97.44%	2.56%	100.00%	96.72%
Wicklow	2,153	2,552	1:0.8	22.26%	77.74%	1:0.9	1:0.8	88.48%	18.81%	69.67%	70.77%	29.23%	83.10%	67.24%



Month-on-Month Summary

WTE change since APR 2024		% WTE change since APR 2024	Overall	Consultants	Registrars	SHO/ Interns	Medical/ Dental/ other	Medical & Dental	Nurse/ Midwife/ Manager	Nurse/ Midwife/ Specialist & ANSP	Staff Nurse/ Staff Midwife	Public Health Nurse	Nursing/ Midwifery Student	Nursing/ Midwifery other	Nursing & Midwifery	Therapy Professionals	Health Science/ Diagnostics	Social Care	Social Workers	Psychologists	Pharmacy	H&SC, Other	Health & Social Care Professionals	Management (VIII & above)	Administrative / Supervisory (V to VII)	Clinical (II & IV)	Management & Administrative	Support	Maintenance/ Technical	General Support	Health Care Assistants	Care other	Patient & Client Care
Overall		-0.27%	-10.2	-0.4	+0.2	+0.7	-0.2	+0.3	-0.1	+2.1	-1.7	-0.0	-0.2	+0.1	-0.9	-1.1	+0.3	-1.3	+0.2	-0.0	-0.0	+1.1	-1.9	+3.1	+4.0	-0.8	+1.3	-2.3	+0.1	-2.2	+0.8	-2.6	-1.8
Dun Laoghaire	46001	-0.63%	-2.0				+0.4	+0.4	+0.1	+0.0	-0.5	-0.6			-1.0	-0.7			-0.1	-0.9		+0.2	-1.4	+0.0	+0.6	+0.3	+0.9	-1.1		-1.1	+0.1	+0.1	+0.2
Dublin South-East	46002	+0.49%	+6.1	-0.5	+1.1		-0.1	+0.5	+1.8	+0.0	+4.1	-2.5	-0.2	+0.1	+3.2	-2.7	+0.1	-0.0	-0.2	-0.0	-0.0	+0.9	-2.0	+2.3	+1.0	-1.6	+1.6	+2.5	+0.0	+2.5	-1.6	+1.9	+0.3
Wicklow	46010	-0.67%	-14.4	+0.1	-1.0	+0.7	-0.5	-0.6	-1.2	+2.0	-5.3	-2.9	+0.0	+0.0	-7.4	+2.3	+0.2	-1.3	+0.6	-0.1	+0.0	-0.1	+1.6	-0.3	+2.6	-4.3	-2.1	-3.7	+0.1	-3.6	+2.3	-4.5	-2.3
Other CHO 6	46039	+0.11%	+0.1						-0.7						-0.7				-0.1		+0.0		-0.1	+1.2	-0.2	-0.1	+0.8						

CHO 6 Employment Report: MAY 2024

Year-to-Date Summary

WTE change since DEC 2023	% WTE change since DEC 2023	Overall	Consultants	Registrars	SHO/ Interns	Medical/ Dental, other	Medical & Dental	Nurse/ Midwife Manager	Nurse/ Midwife Specialist & ANMP	Staff Nurse/ Staff Midwife	Public Health Nurse	Nursing/ Midwifery Student	Nursing/ Midwifery other	Nursing & Midwifery	Therapy Professions	Health Sciences/ Diagnostics	Social Care	Social Workers	Psychologists	Pharmacy	HASC, Other	Health & Social Care Professionals	Management (VIII & above)	Administrative / Supervisory (V to VII)	Clerical (III & IV)	Management & Administrative	Support	Maintenance/ Technical	General Support	Health Care Assistants	Care, other	Patient & Client Care
Overall	-0.03%	-1	+2	-2	-2	-0	-2	-6	+22	-15	-7	+7	-0	+1	-1	-0	+5	-3	-1	+0	+2	+2	-3	+0	-11	-13	-6	-2	-8	+17	+2	+19
Dun Laoghaire	-0.71%	-2				+1	+1	+2	+0	-1	-3		+1	+3				-0	-1		+2	+4	-1	-1	-2	-3	-1		-1	-1	-0	-1
Dublin South-East	-0.48%	-6	+3	+2	-1	-2	+2	-1	+10	-6	-2	+6	-0	+7	-6	-0	+1	+2	-2	-0	+2	-4	+1	-9	-1	-9	+0	+1	+1	-4	+1	-3
Wicklow	+0.36%	+8	-1	-3	-1	+1	-5	-8	+12	-8	-2	+1	+0	-5	+2	+0	+4	-3	+3	+0	-3	+3	-2	+11	-9	-1	-5	-3	-8	+21	+2	+23
Other CHO 6	-0.57%	-0						+0						+0				-1		+0		-1	-0	-1	+1	-0						

CHO 6 Employment Report: MAY 2024

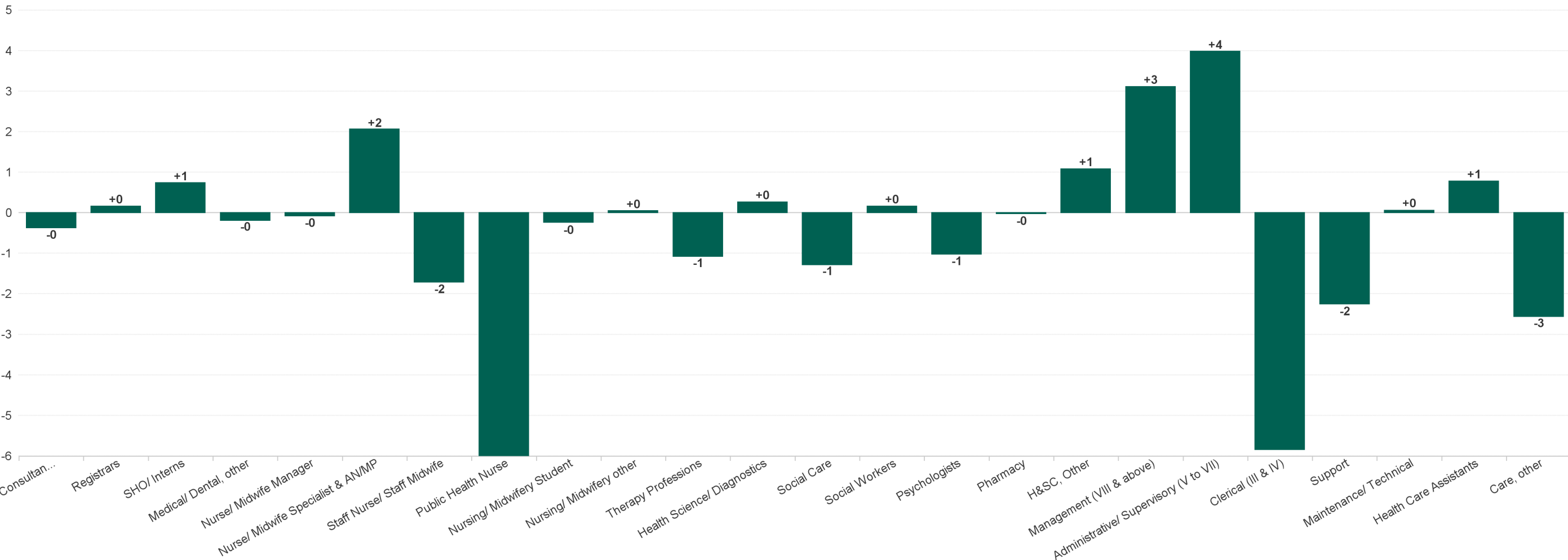
Year-on-Year Summary

WTE change since MAY 2023	% WTE change since MAY 2023	Overall	Consultants	Registrars	SHO/ Interns	Medical/ Dental, other	Medical & Dental	Nurse/ Midwife Manager	Nurse/ Midwife Specialist & AN/MP	Staff Nurse/ Staff Midwife	Public Health Nurse	Nursing/ Midwifery Student	Nursing/ Midwifery other	Nursing & Midwifery	Therapy Professions	Health Science/ Diagnostics	Social Care	Social Workers	Psychologists	Pharmacy	HASC, Other	Health & Social Care Professionals	Management (VIII & above)	Administrative / Supervisory (V to VII)	Clerical (III & IV)	Management & Administrative	Support	Maintenance/ Technical	General Support	Health Care Assistants	Care, other	Patient & Client Care
Overall	+3.97%	+145	+7	+14	+4	-2	+22	+2	+31	-22	-3	+2	-0	+19	+31	+2	+18	-6	+13	-1	+12	+69	-6	+5	+8	+8	-3	-1	-4	+32	+7	+39
Dun Laoghaire	+10.87%	+30				+0	+0	+2	+4	+5	-2	-1		+8	+10			+0	+5		+6	+22	-1	-0	+6	+5	-2		-2	-3	-0	-3
Dublin South-East	+3.85%	+66	+5	+17		-2	+19	+2	+12	+4	-0	+1	-0	+19	+6	+2	+1	-2	-0	-2	+3	+8	-1	-11	+2	-10	+3	+2	+5	-4	+8	+5
Wicklow	+3.07%	+64	+2	-3	+4	+0	+3	-2	+15	-31	-1	+2	+0	-17	+15	+0	+17	-3	+8	+1	+2	+40	-5	+13	-1	+8	-4	-3	-7	+38	-1	+37
Other CHO 6	+5.15%	+4						+0						+0				-1		+0		-1	+1	+3	-0	+4						



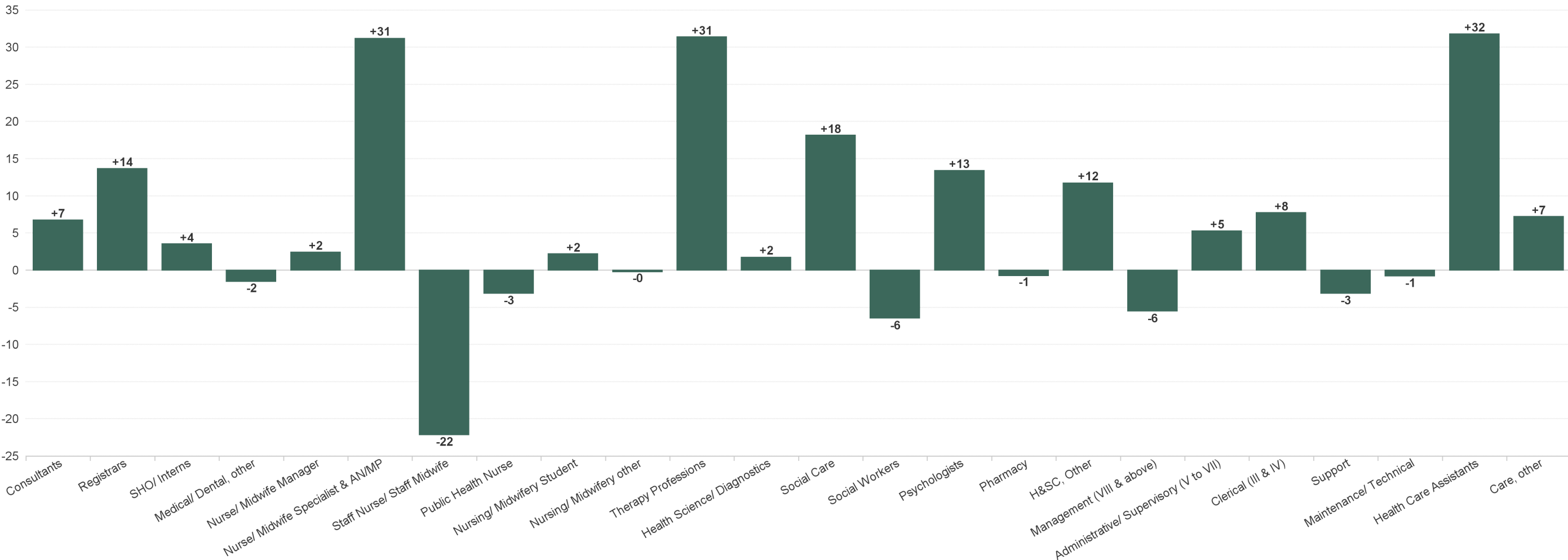
CHO 6 Employment Report: MAY 2024

Previous Month Summary Chart: Change since APR 2024



CHO 6 Employment Report: MAY 2024

Previous Year Summary Chart: Change since MAY 2023



CHO 6 Employment Report: MAY 2024

YTD Summary Chart: Change since DEC 2023

