

CHO 4 Employment Report: MAY 2024

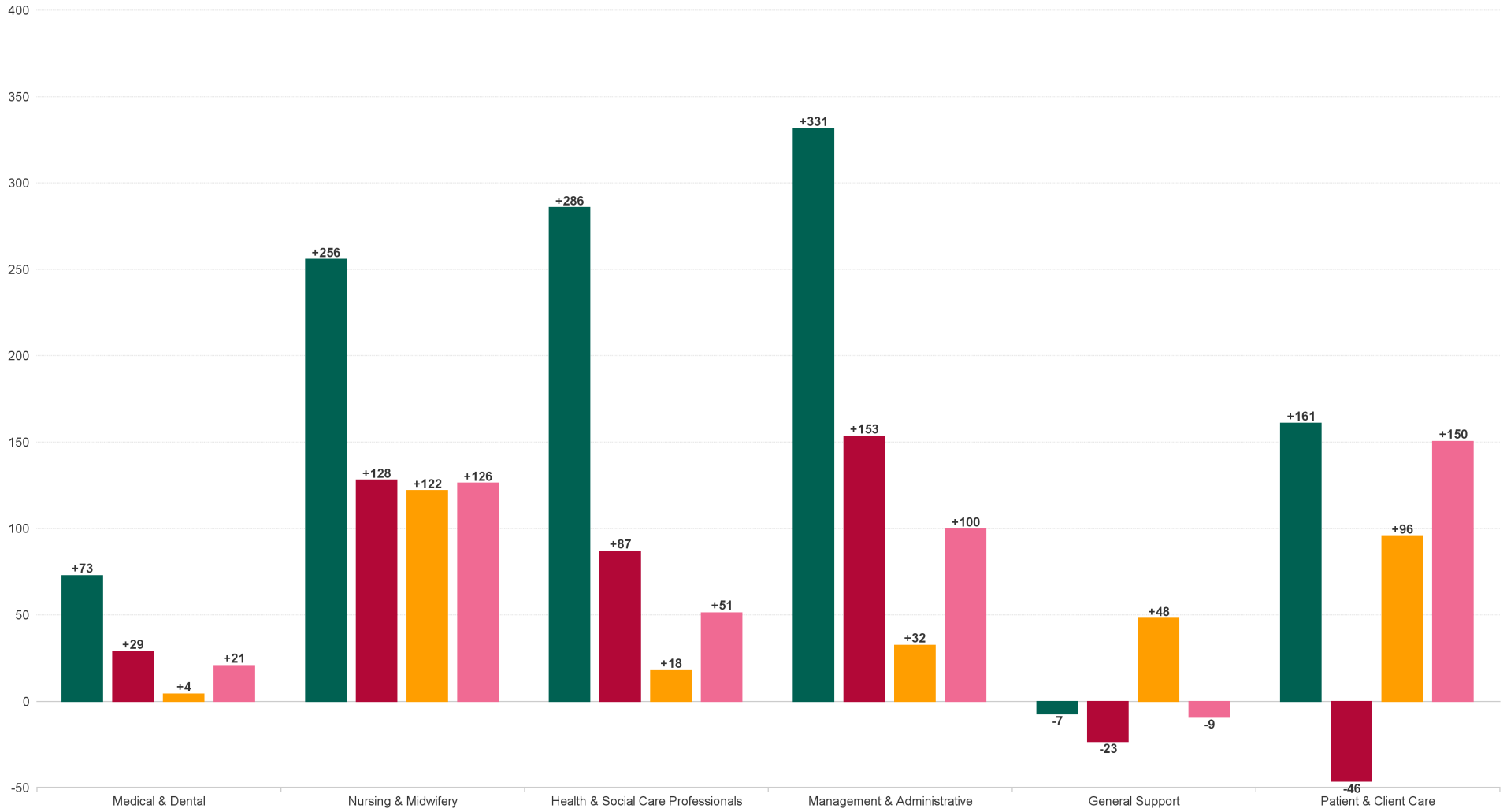
Employment by Staff Group (1) MAY 2024

Employment by Staff Group (1) MAY 2024	WTE DEC 2019	WTE DEC 2022	WTE DEC 2023	WTE APR 2024	WTE MAY 2024	WTE Change 2023	WTE Change 2024	WTE Change APR 2024	WTE Change Dec 2022 to MAY 2024	WTE Change Dec 2019 to MAY 2024	% WTE Change Dec 2022 to MAY 2024	No. MAY 2024
Overall	8,189	8,961	8,968	9,277	9,288	+7	+320	+11	+327	+1,099	3.65%	11,380
Consultants	55	70	75	78	77	+5	+2	-1	+7	+22	10.21%	91
Registrars	103	96	111	111	110	+15	-1	-0	+15	+7	15.19%	114
SHO/ Interns	38	46	58	65	64	+11	+6	-1	+17	+25	36.99%	65
Medical/ Dental, other	111	140	133	128	130	-7	-3	+2	-10	+18	-7.22%	235
Medical & Dental	308	352	376	381	380	+24	+4	-1	+29	+73	8.18%	505
Nurse/ Midwife Manager	433	490	497	522	524	+8	+27	+3	+35	+92	7.09%	567
Nurse/ Midwife Specialist & AN/MP	81	106	147	166	166	+41	+19	-0	+60	+85	57.03%	187
Staff Nurse/ Staff Midwife	1,446	1,532	1,488	1,565	1,554	-44	+66	-11	+22	+109	1.45%	1,861
Public Health Nurse	216	216	209	207	195	-8	-14	-12	-22	-21	-9.97%	267
Nursing/ Midwifery awaiting registration	32		5.5	1	1	+6	-5	+0	+1	-31	-100.00%	1
Post-registration Nurse/ Midwife Student	19	11	20	21	17	+9	-3	-4	+6	-2	55.25%	17
Pre-registration Nurse/ Midwife Intern	9	7	1.5	32	31	-6	+29	-1	+24	+22	318.97%	64
Nursing/ Midwifery Student	60	18	27	53	49	+9	+22	-5	+31	-11	166.88%	82
Nursing/ Midwifery other	1	1	1	3	3	+0	+2	+0	+2	+2	200.00%	3
Nursing & Midwifery	2,235	2,363	2,369	2,516	2,491	+6	+122	-25	+128	+256	5.42%	2,967
Dietitians	28	36	41.75	43	42	+6	+1	-0	+6	+15	17.07%	52
Occupational Therapists	169	227	239.11	236	235	+12	-4	-1	+8	+66	3.61%	266
Orthoptists	3	1	0.5	1	1	-1	+0	+0	-1	-3	-50.00%	1
Physiotherapists	106	126	133.58	140	137	+8	+3	-3	+11	+30	8.59%	165
Podiatrists & Chiropodists	6	16	12.89	14	14	-3	+1	+0	-2	+7	-11.62%	15
Speech & Language Therapists	134	144	151.06	154	154	+7	+3	+0	+10	+20	7.17%	181
Therapy Professions	448	549	579	586	583	+30	+4	-4	+33	+135	6.04%	680
Health Science/ Diagnostics	12	14	13	13	13	-1	-0	-0	-1	+1	-8.33%	15
Social Care	240	272	278	287	295	+6	+17	+8	+23	+55	8.48%	335
Social Workers	115	147	171	172	172	+24	+1	-0	+25	+57	16.87%	193
Psychologists	138	156	156	150	150	-0	-6	+0	-6	+12	-3.63%	168
Pharmacy	8	9	12	15	15	+4	+2	+0	+6	+7	71.20%	21
H&SC, Other	60	72	79	79	79	+7	-1	-1	+6	+18	8.90%	102
Health & Social Care Professionals	1,020	1,219	1,288	1,302	1,306	+69	+18	+4	+87	+286	7.11%	1,514
Management (VIII & above)	73	90	98	96	95	+8	-3	-1	+5	+23	5.73%	102
Administrative/ Supervisory (V to VII)	161	254	317	319	319	+63	+1	-1	+64	+158	25.34%	341
Clerical (III & IV)	505	572	622	658	656	+50	+34	-2	+84	+151	14.66%	783
Management & Administrative	738	916	1,037	1,074	1,070	+121	+32	-4	+153	+331	16.74%	1,226
Support	337	353	286	332	332	-68	+46	+0	-21	-5	-6.08%	412
Maintenance/ Technical	22	22	18	21	20	-4	+2	-1	-2	-2	-8.68%	22
General Support	359	375	304	353	352	-71	+48	-1	-23	-7	-6.24%	434
Health Care Assistants	1,954	2,135	2,102	2,154	2,177	-32	+75	+23	+42	+223	1.98%	2,552
Home Help	1,124	1,076	944	942	950	-132	+7	+8	-125	-173	-11.66%	1,495
Care, other	450	524	547	555	561	+23	+14	+7	+37	+111	7.03%	687
Patient & Client Care	3,528	3,735	3,593	3,651	3,689	-142	+96	+38	-46	+161	-1.24%	4,734



WTE Change by Staff Category

■ WTE change since DEC 2019 ■ WTE change since DEC 2022 ■ WTE change since DEC 2023 ■ WTE change since MAY 2023

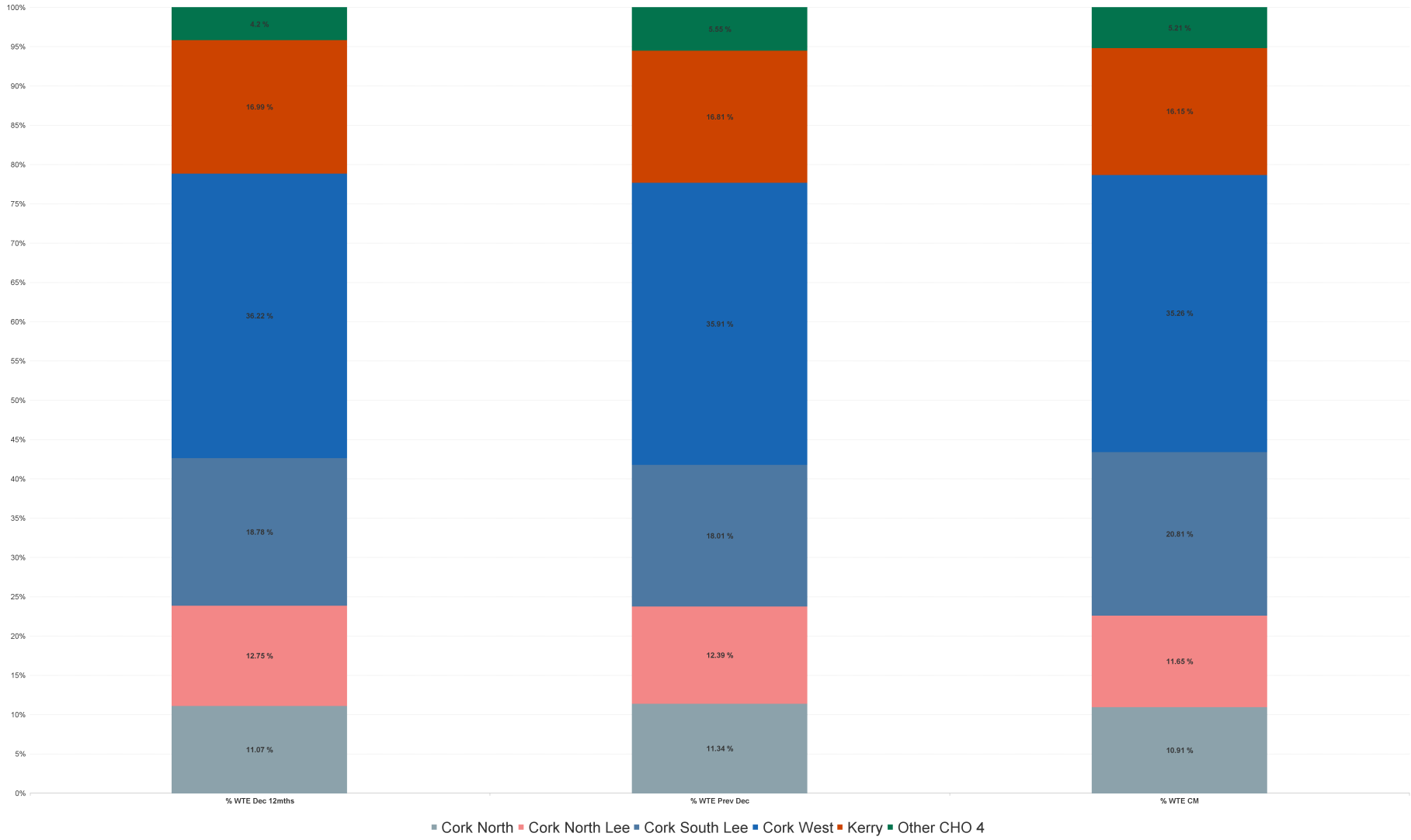


Employment Report by Hospital: MAY 2024

Hospital MAY 2024	WTE DEC 2019	WTE DEC 2022	WTE DEC 2023	WTE APR 2024	WTE MAY 2024	WTE Change 2023	WTE Change 2024	WTE Change APR 2024	WTE Change Dec 2022 to MAY 2024	WTE Change Dec 2019 to MAY 2024	% WTE Change Dec 2022 to MAY 2024	No. MAY 2024
Overall	8,189	8,961	8,968	9,277	9,288	+7	+320	+11	+327	+1,099	3.65%	11,380
Cork North	973	992	1,017	1,018	1,014	+25	-3	-4	+22	+41	2.19%	1,311
Cork North Lee	1,149	1,142	1,111	1,091	1,082	-31	-28	-8	-60	-67	-5.25%	1,337
Cork South Lee	1,606	1,683	1,615	1,935	1,933	-67	+318	-2	+250	+327	14.88%	2,386
Cork West	3,044	3,245	3,220	3,241	3,275	-25	+55	+34	+30	+231	0.93%	3,974
Kerry	1,403	1,522	1,508	1,503	1,500	-15	-8	-3	-23	+97	-1.49%	1,811
Other CHO 4	13	376	497	490	484	+121	-13	-6	+108	+471	28.72%	561



% Total by Hospital



Employment Report by HSE/S38: MAY 2024

Administration MAY 2024	WTE DEC 2019	WTE DEC 2022	WTE DEC 2023	WTE APR 2024	WTE MAY 2024	WTE Change 2023	WTE Change 2024	WTE Change APR 2024	WTE Change Dec 2022 to MAY 2024	WTE Change Dec 2019 to MAY 2024	% WTE Change Dec 2022 to MAY 2024	No. MAY 2024
Overall	8,189	8,961	8,968	9,277	9,288	+7	+320	+11	+327	+1,099	3.65%	11,380
Health Service Executive	5,939	6,531	6,492	6,463	6,430	-40	-62	-33	-101	+491	-1.55%	7,892
Section 38 Voluntary Agencies	2,249	2,429	2,476	2,814	2,858	+47	+382	+44	+429	+609	17.65%	3,488



Employment Report by Administration: MAY 2024

Health Service Executive

MAY 2024	WTE DEC 2019	WTE DEC 2022	WTE DEC 2023	WTE APR 2024	WTE MAY 2024	WTE Change 2023	WTE Change 2024	WTE Change APR 2024	WTE Change Dec 2022 to MAY 2024	WTE Change Dec 2019 to MAY 2024	% WTE Change Dec 2022 to MAY 2024	No. MAY 2024
Total Health Service Executive	5,939	6,531	6,492	6,463	6,430	-40	-62	-33	-101	+491	-1.55%	7,892
Consultants	55	66	71	71	70	+5	-1	-1	+5	+15	7.04%	83
Registrars	98	93	108	102	101	+15	-7	-0	+8	+3	9.12%	104
SHO/ Interns	32	42	55	60	59	+12	+4	-1	+16	+27	38.12%	60
Medical/ Dental, other	98	120	115	112	112	-6	-3	-1	-8	+13	-6.91%	185
Medical & Dental	284	321	348	345	342	+27	-6	-3	+21	+58	6.53%	432
Nurse/ Midwife Manager	358	405	410	414	416	+4	+6	+2	+11	+58	2.68%	447
Nurse/ Midwife Specialist & AN/MP	68	93	135	132	132	+42	-3	+0	+39	+64	42.50%	147
Staff Nurse/ Staff Midwife	1,161	1,261	1,226	1,226	1,212	-36	-13	-14	-49	+51	-3.87%	1,432
Public Health Nurse	216	216	209	207	195	-8	-14	-12	-22	-21	-9.97%	267
<i>Nursing/ Midwifery awaiting registration</i>	32		+6	1	1	-32	-5	+1	+1	-31	+1	1
<i>Post-registration Nurse/ Midwife Student</i>	19	11	+20	21	17	-8	-3	+3	+6	-2	+6	17
<i>Pre-registration Nurse/ Midwife Intern</i>	3	7	+1	23	22	+4	+21	-3	+14	+19	+14	45
Nursing/ Midwifery Student	54	18	26	44	40	+8	+14	-4	+21	-14	116.04%	63
Nursing/ Midwifery other				1	1		+1	+0	+1	+1	-100.00%	1
Nursing & Midwifery	1,857	1,993	2,005	2,024	1,996	+11	-9	-28	+2	+138	0.11%	2,357
<i>Dietitians</i>	26	34	+39	39	38	+8	-0	-2	+4	+13	+4	48
<i>Occupational Therapists</i>	138	188	+194	189	186	+50	-8	-6	-2	+48	-2	212
<i>Orthoptists</i>	3	1	+1	1	1	-2	+0	+0	-1	-3	-1	1
<i>Physiotherapists</i>	92	109	+112	112	109	+17	-3	-8	+0	+17	+0	132
<i>Podiatrists & Chiropractors</i>	6	16	+13	14	14	+9	+1	-3	-2	+7	-2	15
<i>Speech & Language Therapists</i>	94	111	+112	113	113	+17	+1	+0	+2	+19	+2	132
Therapy Professions	359	459	471	467	461	+12	-10	-6	+2	+102	0.49%	540
Health Science/ Diagnostics	10	12	11	11	11	-1	-0	-0	-1	+1	-9.67%	13
Social Care	39	44	37	40	40	-7	+3	-0	-4	+1	-9.47%	44
Social Workers	88	119	136	132	131	+17	-5	-0	+12	+43	10.18%	147
Psychologists	107	123	125	116	115	+2	-10	-1	-8	+8	-6.31%	129
Pharmacy	8	9	12	11	11	+4	-1	+0	+3	+3	32.40%	17
H&SC, Other	56	67	76	76	76	+9	-1	-1	+8	+20	12.49%	97
Health & Social Care Professionals	667	833	868	854	846	+35	-23	-8	+12	+179	1.49%	987
Management (VIII & above)	58	73	79	73	74	+6	-6	+0	+0	+16	0.34%	76
Administrative/ Supervisory (V to VII)	123	204	257	254	251	+53	-6	-3	+47	+127	23.14%	269
Clerical (III & IV)	415	479	531	532	532	+52	+1	-0	+53	+116	11.04%	611
Management & Administrative	596	756	867	859	856	+112	-11	-3	+100	+260	13.26%	956
Support	207	222	206	202	202	-16	-4	+0	-20	-5	-8.98%	231
Maintenance/ Technical	13	13	8	8	8	-5	+0	+0	-5	-5	-40.17%	8
General Support	220	235	214	209	210	-21	-4	+0	-25	-10	-10.72%	239
Health Care Assistants	1,079	1,166	1,092	1,081	1,080	-73	-12	-1	-85	+2	-7.30%	1,228
Home Help	1,124	1,076	944	942	950	-132	+7	+8	-125	-173	-11.66%	1,495
Care, other	113	151	153	149	150	+1	-3	+1	-1	+37	-0.94%	198
Patient & Client Care	2,316	2,393	2,189	2,172	2,181	-204	-8	+9	-212	-135	-8.86%	2,921



Section 38 Voluntary Agencies

MAY 2024	WTE DEC 2019	WTE DEC 2022	WTE DEC 2023	WTE APR 2024	WTE MAY 2024	WTE Change 2023	WTE Change 2024	WTE Change APR 2024	WTE Change Dec 2022 to MAY 2024	WTE Change Dec 2019 to MAY 2024	% WTE Change Dec 2022 to MAY 2024	No. MAY 2024
Total Section 38 Voluntary Agencies	2,249	2,429	2,476	2,814	2,858	+47	382	+44	+429	+609	17.65%	3,488
Consultants		4	4	7	7	+0	+3	+0	+3	+7	60.53%	8
Registrars	5	3	3	9	9	-0	+7	+0	+6	+4	203.33%	10
SHO/ Interns	6	4	3	5	5	-1	+2	+0	+1	-1	25.00%	5
Medical/ Dental, other	13	20	18	16	18	-2	-0	+2	-2	+5	-9.17%	50
Medical & Dental	24	31	28	36	38	-3	+11	+2	+8	+14	25.48%	73
Nurse/ Midwife Manager	75	85	88	107	108	+3	+20	+1	+24	+34	28.24%	120
Nurse/ Midwife Specialist & AN/MP	12	13	12	34	34	-1	+22	-1	+21	+21	160.42%	40
Staff Nurse/ Staff Midwife	284	271	262	339	342	-8	+79	+3	+71	+58	26.19%	429
<i>Pre-registration Nurse/ Midwife Intern</i>	6		+1	10	9	-6	+8	-1	+9	+3	+9	19
Nursing/ Midwifery Student	6		1	10	9	+1	+8	-0	+9	+3	-100.00%	19
Nursing/ Midwifery other	1	1	1	2	2	+0	+1	+0	+1	+1	100.00%	2
Nursing & Midwifery	378	369	364	492	495	-5	+131	+3	+126	+118	34.11%	610
<i>Dietitians</i>	2	2	+3	4	4	+0	+1	+2	+2	+2	+2	4
<i>Occupational Therapists</i>	31	39	+45	47	49	+8	+4	+12	+10	+17	+10	54
<i>Physiotherapists</i>	15	17	+21	27	28	+2	+7	+10	+11	+13	+11	33
<i>Speech & Language Therapists</i>	40	32	+39	40	41	-8	+2	+11	+9	+1	+9	49
Therapy Professions	89	90	108	119	121	+17	+14	+3	+31	+33	34.20%	140
Health Science/ Diagnostics	2	2	2	2	2	+0	+0	-0	+0	+0	0.00%	2
Social Care	201	228	241	247	255	+13	+14	+8	+27	+54	11.95%	291
Social Workers	27	28	35	40	40	+8	+5	-0	+13	+13	45.58%	46
Psychologists	31	33	31	34	35	-2	+4	+2	+2	+4	6.28%	39
Pharmacy				3	3		+3	+0	+3	+3	-100.00%	4
H&SC, Other	4	5	3	3	3	-2	+0	+0	-2	-1	-42.02%	5
Health & Social Care Professionals	354	386	420	448	460	+34	+40	+12	+74	+107	19.23%	527
Management (VIII & above)	15	17	19	23	22	+2	+3	-2	+5	+7	29.15%	26
Administrative/ Supervisory (V to VII)	38	51	61	66	68	+10	+7	+2	+17	+30	34.18%	72
Clerical (III & IV)	89	93	90	126	124	-3	+34	-2	+31	+35	33.28%	172
Management & Administrative	142	161	170	215	214	+10	+44	-1	+53	+72	33.13%	270
Support	130	131	80	130	130	-52	+50	-0	-2	-0	-1.18%	181
Maintenance/ Technical	9	9	10	13	12	+1	+2	-1	+3	+3	37.36%	14
General Support	139	140	90	143	142	-50	+52	-1	+2	+3	1.28%	195
Health Care Assistants	875	969	1,010	1,073	1,096	+41	+87	+24	+127	+221	13.15%	1,324
Care, other	336	373	394	406	411	+21	+17	+5	+38	+75	10.27%	489
Patient & Client Care	1,212	1,342	1,404	1,479	1,508	+62	+104	+29	+166	+296	12.35%	1,813



Employment Report by Hospital : MAY 2024

Cork North	WTE DEC 2019	WTE DEC 2022	WTE DEC 2023	WTE APR 2024	WTE MAY 2024	WTE Change 2023	WTE Change 2024	WTE Change APR 2024	WTE Change Dec 2022 to MAY 2024	WTE Change Dec 2019 to MAY 2024	% WTE Change Dec 2022 to MAY 2024	No. MAY 2024
Total Cork North	973	992	1,017	1,018	1,014	+25	-3	-4	+22	+41	2.19%	1,311
Consultants	6	9	10	10	10	+1	-0	-0	+1	+4	6.68%	11
Registrars	63	47	69	65	64	+22	-5	-1	+17	+1	35.13%	66
SHO/ Interns	11	9	9	11	10	+0	+1	-1	+1	-1	10.34%	10
Medical/ Dental, other	30	40	39	36	38	-2	-1	+2	-2	+8	-5.87%	81
Medical & Dental	110	106	127	121	121	+21	-5	+0	+16	+11	14.91%	168
Nurse/ Midwife Manager	54	65	68	71	72	+3	+4	+0	+7	+18	9.98%	75
Nurse/ Midwife Specialist & ANMP	12	10	15	16	16	+5	+1	-0	+6	+4	58.88%	18
Staff Nurse/ Staff Midwife	169	173	178	181	179	+5	+0	-3	+6	+10	3.33%	215
Public Health Nurse	30	28	30	27	25	+2	-4	-2	-2	-5	-8.65%	37
<i>Nursing/ Midwifery awaiting registration</i>	4		3.5			+4	-4			-4	-100.00%	
<i>Post-registration Nurse/ Midwife Student</i>	1	2	1	1	1	-1	+0	+0	-1	+0	-49.75%	1
Nursing/ Midwifery Student	5	2	5	1	1	+3	-4	+0	-1	-4	-49.75%	1
Nursing/ Midwifery other				1	1		+1	+0	+1	+1	-100.00%	1
Nursing & Midwifery	270	278	295	298	294	+17	-2	-5	+16	+24	5.67%	347
<i>Dietitians</i>	8	4	4.7	3	3	+1	-1	+0	-1	-5	-22.60%	4
<i>Occupational Therapists</i>	17	9	12.25	11	11	+3	-1	+0	+3	-5	28.77%	13
<i>Physiotherapists</i>	11	4	5.42	5	4	+2	-1	-1	+1	-6	15.06%	5
<i>Podiatrists & Chiropodists</i>	1		1	1	1	+1	+0	+0	+1	+0	-100.00%	1
<i>Speech & Language Therapists</i>	9	3	1.62	2	2	-1	-0	-0	-1	-8	-38.70%	2
Therapy Professions	46	19	25	22	22	+6	-3	-1	+2	-24	11.16%	25
Health Science/ Diagnostics	2	2	2	2	2	+0	+0	+0	+0	+0	0.00%	2
Social Care		1				-1			-1		-100.00%	
Social Workers	9	9	8	7	7	-1	-1	-0	-2	-2	-22.69%	8
Psychologists	12	16	13	12	12	-3	-0	+0	-3	+0	-20.54%	14
Pharmacy	2	3	2	1	1	-1	-1	+0	-2	-1	-54.52%	2
H&SC, Other	2	12	12	11	11	-0	-1	+0	-1	+9	-10.64%	23
Health & Social Care Professionals	73	62	61	55	55	-1	-6	-0	-7	-18	-11.33%	74
Management (VIII & above)	5	8	6	6	6	-2	+0	+0	-1	+2	-18.62%	7
Administrative/ Supervisory (V to VII)	17	34	41	40	40	+7	-1	+0	+6	+23	18.29%	42
Clerical (III & IV)	82	81	92	96	90	+10	-1	-6	+9	+8	10.98%	122
Management & Administrative	104	123	139	142	137	+15	-2	-5	+14	+33	11.08%	171
Support	40	42	41	40	40	-0	-1	-1	-1	+0	-3.25%	45
Maintenance/ Technical	6	6	3	3	3	-3	+0	+0	-3	-3	-50.00%	3
General Support	46	48	44	43	43	-3	-1	+0	-4	-3	-9.14%	48
Health Care Assistants	153	152	154	155	153	+2	-1	-2	+1	+1	0.86%	175
Home Help	175	160	134	136	140	-26	+6	+3	-21	-35	-12.97%	236
Care, other	43	63	62	66	71	-1	+8	+5	+7	+28	11.70%	92
Patient & Client Care	370	376	350	357	363	-25	+13	+6	-12	-7	-3.22%	503

Cork North Lee	WTE DEC 2019	WTE DEC 2022	WTE DEC 2023	WTE APR 2024	WTE MAY 2024	WTE Change 2023	WTE Change 2024	WTE Change APR 2024	WTE Change Dec 2022 to MAY 2024	WTE Change Dec 2019 to MAY 2024	% WTE Change Dec 2022 to MAY 2024	No. MAY 2024
----------------	--------------	--------------	--------------	--------------	--------------	-----------------	-----------------	---------------------	---------------------------------	---------------------------------	-----------------------------------	--------------



Total Cork North Lee	1,149	1,142	1,111	1,091	1,082	-31	-28	-8	-60	-67	-5.25%	1,337
Consultants	19	22	23	24	25	+1	+2	+1	+3	+6	12.23%	28
Registrars	17	23	20	22	22	-3	+2	+0	-2	+5	-6.46%	22
SHO/ Interns	10	12	15	11	11	+3	-4	-0	-1	+1	-7.98%	11
Medical/ Dental, other	15	17	17	16	16	-0	-1	+0	-1	+1	-7.24%	26
Medical & Dental	61	74	75	72	73	+1	-2	+1	-1	+12	-1.35%	87
Nurse/ Midwife Manager	69	79	79	82	79	+0	-0	-3	+0	+10	0.35%	84
Nurse/ Midwife Specialist & AN/MP	21	31	49	45	43	+18	-5	-2	+12	+23	40.00%	48
Staff Nurse/ Staff Midwife	246	239	230	225	220	-9	-10	-5	-19	-26	-8.08%	262
Public Health Nurse	58	53	51	47	46	-2	-6	-2	-7	-13	-13.78%	61
<i>Nursing/ Midwifery awaiting registration</i>	12		1	1	1	+1	+0	+0	+1	-11	-100.00%	1
<i>Post-registration Nurse/ Midwife Student</i>	11	4	4	5	5	+0	+1	+0	+1	-6	25.00%	5
<i>Pre-registration Nurse/ Midwife Intern</i>	2									-2	-100.00%	
Nursing/ Midwifery Student	25	4	5	5	6	+1	+1	+1	+2	-19	50.00%	6
Nursing & Midwifery	418	406	414	405	394	+8	-20	-11	-12	-24	-2.94%	461
<i>Dietitians</i>	4	4	2.73	6	6	-1	+3	-0	+2	+3	64.55%	7
<i>Occupational Therapists</i>	28	25	29.53	29	28	+5	-2	-1	+3	+0	11.35%	31
<i>Physiotherapists</i>	10	5	6.8	7	7	+1	+0	-0	+1	-3	26.72%	9
<i>Podiatrists & Chiropodists</i>	4	3	2.93	3	3	-0	+0	+0	-0	-1	-1.00%	3
<i>Speech & Language Therapists</i>	22	12	10.6	12	12	-1	+2	+0	+1	-10	4.35%	15
Therapy Professions	68	49	53	57	56	+4	+4	-1	+7	-12	14.71%	65
Social Care	8	9	8	10	10	-0	+1	-1	+1	+2	10.84%	11
Social Workers	24	32	29	31	32	-3	+3	+1	+0	+8	0.12%	36
Psychologists	50	47	54	49	48	+7	-5	-1	+1	-1	2.55%	53
Pharmacy		0	0	0	0	+0	+0	+0	+0	+0	0.00%	1
H&SC, Other	12	17	19	18	17	+2	-3	-1	-1	+5	-3.99%	21
Health & Social Care Professionals	161	155	163	165	163	+9	+0	-2	+9	+2	5.63%	187
Management (VIII & above)	4	8	7	6	6	-1	-1	-0	-2	+2	-28.00%	6
Administrative/ Supervisory (V to VII)	24	26	24	24	24	-2	-0	-0	-2	+0	-7.41%	26
Clerical (III & IV)	71	68	76	73	73	+8	-3	-1	+5	+2	7.70%	82
Management & Administrative	99	101	107	103	102	+5	-4	-1	+1	+3	1.06%	114
Support	29	23	14	11	11	-9	-3	-1	-12	-18	-53.33%	12
Maintenance/ Technical	3	1	1	1	1	+0	+0	+0	+0	-2	0.00%	1
General Support	32	24	15	12	12	-9	-3	-1	-12	-20	-51.06%	13
Health Care Assistants	134	163	143	142	145	-20	+2	+3	-18	+11	-10.86%	167
Home Help	226	200	178	174	176	-22	+2	+2	-23	-49	-11.71%	285
Care, other	19	20	17	17	17	-4	+0	+0	-4	-2	-18.30%	23
Patient & Client Care	378	383	337	333	338	-46	+1	+5	-45	-41	-11.70%	475

Cork South Lee	WTE DEC 2019	WTE DEC 2022	WTE DEC 2023	WTE APR 2024	WTE MAY 2024	WTE Change 2023	WTE Change 2024	WTE Change APR 2024	WTE Change Dec 2022 to MAY 2024	WTE Change Dec 2019 to MAY 2024	% WTE Change Dec 2022 to MAY 2024	No. MAY 2024
Total Cork South Lee	1,606	1,683	1,615	1,935	1,933	-67	+318	-2	+250	+327	14.88%	2,386
Consultants	18	21	25	28	26	+4	+1	-2	+5	+8	23.82%	32
Registrars	12	12	14	20	21	+2	+7	+1	+9	+9	72.51%	22
SHO/ Interns	11	14	20	23	22	+6	+2	-1	+8	+11	56.64%	23
Medical/ Dental, other	30	37	35	34	34	-2	-0	+0	-3	+4	-6.79%	58
Medical & Dental	71	84	93	105	104	+9	+11	-2	+19	+32	22.86%	135
Nurse/ Midwife Manager	100	105	106	126	130	+2	+24	+5	+26	+30	24.53%	140
Nurse/ Midwife Specialist & AN/MP	12	22	31	53	52	+8	+22	-1	+30	+40	135.02%	61
Staff Nurse/ Staff Midwife	268	339	299	382	383	-40	+83	+1	+44	+115	12.84%	458
Public Health Nurse	55	66	58	58	55	-9	-3	-3	-11	+0	-17.13%	82
<i>Nursing/ Midwifery awaiting registration</i>	12									-12	-100.00%	
<i>Post-registration Nurse/ Midwife Student</i>	3	4	9	9	5	+5	-4	-4	+1	+2	26.26%	5
<i>Pre-registration Nurse/ Midwife Intern</i>		3	0.5	14	13	-3	+12	-1	+9	+13	272.41%	27
Nursing/ Midwifery Student	15	7	10	23	18	+2	+8	-5	+11	+3	141.40%	32



Cork South Lee	WTE DEC 2019	WTE DEC 2022	WTE DEC 2023	WTE APR 2024	WTE MAY 2024	WTE Change 2023	WTE Change 2024	WTE Change APR 2024	WTE Change Dec 2022 to MAY 2024	WTE Change Dec 2019 to MAY 2024	% WTE Change Dec 2022 to MAY 2024	No. MAY 2024
Total Cork South Lee	1,606	1,683	1,615	1,935	1,933	-67	+318	-2	+250	+327	14.88%	2,386
Nursing/ Midwifery other				1	1		+1	+0	+1	+1	-100.00%	1
Nursing & Midwifery	449	540	503	642	639	-36	+136	-3	+99	+189	18.41%	774
Dietitians	5	5	3.6	4	4	-2	+1	-0	-1	-1	-19.14%	5
Occupational Therapists	50	28	35.6	38	38	+7	+2	-0	+9	-12	33.09%	41
Physiotherapists	27	12	12.05	18	18	-0	+6	-0	+6	-9	45.28%	20
Podiatrists & Chiropodists	1	2	1.43	1	1	-1	-1	-0	-1	+0	-61.67%	1
Speech & Language Therapists	31	13	9.87	10	11	-3	+1	+1	-2	-20	-15.77%	13
Therapy Professions	113	61	63	72	71	+1	+9	-0	+10	-42	16.85%	80
Health Science/ Diagnostics	1	1	1	1	1	+0	+0	-0	+0	+0	0.00%	1
Social Care	13	14	15	16	17	+1	+2	+1	+3	+4	22.07%	19
Social Workers	33	40	41	44	42	+1	+1	-2	+2	+9	5.44%	46
Psychologists	29	41	41	38	37	+0	-5	-1	-5	+7	-11.07%	42
Pharmacy	2	3	4	8	8	+1	+4	+0	+5	+6	172.45%	10
H&SC, Other	35	31	35	39	39	+3	+4	+0	+7	+4	23.94%	44
Health & Social Care Professionals	226	191	200	216	214	+9	+15	-2	+23	-12	12.30%	242
Management (VIII & above)	16	16	17	21	21	+1	+4	+0	+5	+5	32.19%	22
Administrative/ Supervisory (V to VII)	39	36	45	52	51	+9	+6	-1	+15	+12	41.98%	55
Clerical (III & IV)	106	105	124	149	151	+19	+27	+2	+46	+45	43.25%	178
Management & Administrative	160	157	186	221	223	+29	+37	+1	+66	+62	41.85%	255
Support	47	44	42	91	91	-2	+49	-0	+47	+44	108.75%	103
Maintenance/ Technical	1	1		3	3	-1	+3	+0	+2	+2	200.00%	3
General Support	48	45	42	94	94	-3	+52	-0	+49	+46	110.80%	106
Health Care Assistants	330	358	316	384	385	-41	+69	+2	+28	+55	7.73%	452
Home Help	275	259	223	220	221	-37	-2	+0	-38	-54	-14.81%	353
Care, other	46	49	53	53	53	+4	-0	+0	+4	+7	7.69%	69
Patient & Client Care	651	666	592	656	659	-74	+67	+3	-7	+8	-1.05%	874

Cork West	WTE DEC 2019	WTE DEC 2022	WTE DEC 2023	WTE APR 2024	WTE MAY 2024	WTE Change 2023	WTE Change 2024	WTE Change APR 2024	WTE Change Dec 2022 to MAY 2024	WTE Change Dec 2019 to MAY 2024	% WTE Change Dec 2022 to MAY 2024	No. MAY 2024
Total Cork West	3,044	3,245	3,220	3,241	3,275	-25	+55	+34	+30	+231	0.93%	3,974
Consultants	4	4	5	4	4	+1	-1	-0	-0	+0	-0.85%	4
Registrars	5	3	3	1	1	+0	-2	+0	-2	-4	-66.56%	1
SHO/ Interns		1	2	4	4	+1	+2	+0	+3	+4	300.00%	4
Medical/ Dental, other	12	14	14	13	13	-0	-1	+0	-1	+1	-7.43%	21
Medical & Dental	21	22	23	21	22	+2	-2	+0	-0	+1	-0.32%	30
Nurse/ Midwife Manager	118	133	136	135	135	+3	-1	-0	+2	+17	1.69%	149
Nurse/ Midwife Specialist & AN/MP	20	16	16	16	16	+0	-1	+0	-0	-4	-0.06%	17
Staff Nurse/ Staff Midwife	448	433	422	423	425	-11	+3	+2	-8	-23	-1.93%	520
Public Health Nurse	22	22	24	25	23	+2	-1	-2	+1	+1	3.25%	32
Nursing/ Midwifery awaiting registration			1			+1	-1				-100.00%	
Post-registration Nurse/ Midwife Student	1									-1	-100.00%	
Pre-registration Nurse/ Midwife Intern	7	1	1	10	9	+0	+8	-0	+9	+2	1,250.72%	19
Nursing/ Midwifery Student	8	1	2	10	9	+1	+7	-0	+9	+1	1,250.72%	19
Nursing/ Midwifery other	1	1	1	1	1	+0	+0	+0	+0	+0	0.00%	1
Nursing & Midwifery	616	606	601	610	609	-5	+8	-1	+3	-7	0.53%	738
Dietitians	5	3	4.99	5	5	+2	+0	+0	+2	+0	93.05%	5
Occupational Therapists	43	53	50.7	49	51	-3	+0	+2	-2	+8	-4.43%	58
Orthoptists	3	1	0.5	1	1	-1	+0	+0	-1	-2	-50.00%	1
Physiotherapists	30	28	27.46	27	28	-1	+1	+1	-0	-2	-0.53%	34



Cork West	WTE DEC 2019	WTE DEC 2022	WTE DEC 2023	WTE APR 2024	WTE MAY 2024	WTE Change 2023	WTE Change 2024	WTE Change APR 2024	WTE Change Dec 2022 to MAY 2024	WTE Change Dec 2019 to MAY 2024	% WTE Change Dec 2022 to MAY 2024	No. MAY 2024
Total Cork West	3,044	3,245	3,220	3,241	3,275	-25	+55	+34	+30	+231	0.93%	3,974
<i>Podiatrists & Chiropodists</i>	1									-1	-100.00%	
<i>Speech & Language Therapists</i>	53	49	47.87	49	49	-1	+1	+1	-0	-4	-0.43%	59
Therapy Professions	135	134	132	131	134	-3	+2	+3	-1	-1	-0.60%	157
Health Science/ Diagnostics	9	11	10	10	10	-1	-0	-0	-1	+1	-10.80%	11
Social Care	218	247	254	260	268	+7	+14	+8	+21	+50	8.49%	304
Social Workers	33	37	42	41	42	+5	-1	+0	+5	+9	12.36%	48
Psychologists	36	41	36	38	40	-6	+4	+2	-1	+4	-3.04%	45
Pharmacy		0	0	0	0	+0	+0	+0	+0	+0	0.00%	1
H&SC, Other	8	8	8	7	7	+0	-1	+0	-1	-2	-11.53%	8
Health & Social Care Professionals	439	479	481	487	500	+2	+19	+13	+21	+61	4.46%	574
Management (VIII & above)	23	26	30	29	28	+4	-2	-1	+2	+4	6.88%	31
Administrative/ Supervisory (V to VII)	57	83	96	94	96	+14	-0	+1	+13	+38	15.91%	103
Clerical (III & IV)	131	140	139	149	148	-2	+10	-1	+8	+18	5.55%	183
Management & Administrative	211	249	265	272	271	+16	+7	-1	+23	+61	9.13%	317
Support	157	156	98	100	99	-58	+1	-0	-56	-57	-36.21%	150
Maintenance/ Technical	10	11	12	12	11	+1	-1	-1	+0	+1	0.71%	13
General Support	167	167	110	112	111	-57	+0	-1	-56	-57	-33.74%	163
Health Care Assistants	1,115	1,226	1,245	1,238	1,262	+20	+17	+24	+36	+147	2.96%	1,495
Home Help	157	145	120	121	120	-25	-1	-1	-25	-37	-17.44%	205
Care, other	318	353	374	380	381	+21	+7	+1	+28	+63	8.00%	452
Patient & Client Care	1,590	1,723	1,739	1,739	1,762	+16	+23	+24	+39	+173	2.28%	2,152

Kerry	WTE DEC 2019	WTE DEC 2022	WTE DEC 2023	WTE APR 2024	WTE MAY 2024	WTE Change 2023	WTE Change 2024	WTE Change APR 2024	WTE Change Dec 2022 to MAY 2024	WTE Change Dec 2019 to MAY 2024	% WTE Change Dec 2022 to MAY 2024	No. MAY 2024
Total Kerry	1,403	1,522	1,508	1,503	1,500	-15	-8	-3	-23	+97	-1.49%	1,811
Consultants	8	14	12	12	13	-2	+0	+0	-1	+4	-8.58%	16
Registrars	7	10	5	3	3	-5	-2	+0	-7	-4	-69.67%	3
SHO/ Interns	6	10	12	16	17	+1	+5	+1	+6	+11	59.48%	17
Medical/ Dental, other	21	23	24	25	25	+1	+0	-0	+2	+3	6.92%	37
Medical & Dental	42	57	53	57	57	-4	+4	+0	-0	+15	-0.52%	73
Nurse/ Midwife Manager	92	102	102	101	102	-0	+0	+1	+0	+10	0.25%	112
Nurse/ Midwife Specialist & AN/MP	16	26	35	34	37	+9	+2	+2	+11	+21	43.11%	41
Staff Nurse/ Staff Midwife	316	337	349	345	339	+12	-9	-6	+2	+24	0.64%	394
Public Health Nurse	51	47	46	49	46	-1	-0	-3	-1	-5	-2.63%	55
<i>Nursing/ Midwifery awaiting registration</i>	4									-4	-100.00%	
<i>Post-registration Nurse/ Midwife Student</i>	3	1	6	6	6	+5	+0	+0	+5	+3	500.00%	6
<i>Pre-registration Nurse/ Midwife Intern</i>		3		9	9	-3	+9	-0	+5	+9	169.16%	18
Nursing/ Midwifery Student	7	4	6	15	15	+2	+9	-0	+10	+8	247.74%	24
Nursing & Midwifery	482	516	537	544	538	+21	+2	-6	+23	+57	4.39%	626
<i>Dietitians</i>	6	2	1.69	2	2	-1	+0	+0	-1	-4	-23.79%	2
<i>Occupational Therapists</i>	32	31	21.45	21	21	-9	-1	-0	-10	-11	-33.30%	23
<i>Orthoptists</i>	1									-1	-100.00%	
<i>Physiotherapists</i>	29	22	12.12	11	11	-10	-1	-0	-11	-18	-50.16%	13
<i>Podiatrists & Chiropodists</i>		1	1	2	2	+0	+1	-0	+1	+2	97.00%	2
<i>Speech & Language Therapists</i>	19	11	6.85	6	6	-4	-1	+0	-5	-13	-44.50%	6
Therapy Professions	86	67	43	42	41	-24	-2	-1	-26	-45	-38.39%	46
Health Science/ Diagnostics	0	0	0	0	0	+0	+0	+0	+0	+0	0.00%	1
Social Care	1	2	1	1	1	-1	+0	+0	-1	+0	-46.24%	1
Social Workers	15	21	21	21	20	+0	-1	-0	-1	+5	-2.39%	23



Kerry	WTE DEC 2019	WTE DEC 2022	WTE DEC 2023	WTE APR 2024	WTE MAY 2024	WTE Change 2023	WTE Change 2024	WTE Change APR 2024	WTE Change Dec 2022 to MAY 2024	WTE Change Dec 2019 to MAY 2024	% WTE Change Dec 2022 to MAY 2024	No. MAY 2024
Total Kerry	1,403	1,522	1,508	1,503	1,500	-15	-8	-3	-23	+97	-1.49%	1,811
Psychologists	11	11	12	13	13	+2	+0	-0	+2	+2	20.48%	14
Pharmacy	4	2	4	3	3	+2	-1	+0	+1	-1	36.16%	5
H&SC, Other	4	4	5	5	5	+2	-0	+0	+2	+2	52.26%	6
Health & Social Care Professionals	121	106	88	85	84	-19	-4	-1	-22	-37	-20.95%	96
Management (VIII & above)	19	22	22	19	19	-0	-3	-0	-3	-1	-13.93%	20
Administrative/ Supervisory (V to VII)	19	38	48	46	46	+10	-3	-0	+7	+26	18.43%	49
Clerical (III & IV)	115	120	114	115	117	-6	+4	+2	-3	+2	-2.22%	134
Management & Administrative	154	180	183	179	181	+3	-2	+2	+1	+28	0.77%	203
Support	64	89	89	88	90	+1	+0	+1	+1	+25	1.21%	100
Maintenance/ Technical	2	2	2	2	2	+0	+0	+0	+0	+0	0.55%	2
General Support	66	90	91	90	92	+1	+0	+1	+1	+25	1.19%	102
Health Care Assistants	222	235	239	231	227	+5	-12	-4	-8	+5	-3.33%	258
Home Help	292	312	289	290	294	-23	+5	+4	-18	+2	-5.64%	416
Care, other	24	26	27	26	26	+1	-1	+0	+0	+2	0.61%	37
Patient & Client Care	538	573	556	547	548	-17	-8	+0	-25	+9	-4.41%	711

Other CHO 4	WTE DEC 2019	WTE DEC 2022	WTE DEC 2023	WTE APR 2024	WTE MAY 2024	WTE Change 2023	WTE Change 2024	WTE Change APR 2024	WTE Change Dec 2022 to MAY 2024	WTE Change Dec 2019 to MAY 2024	% WTE Change Dec 2022 to MAY 2024	No. MAY 2024
Total Other CHO 4	13	376	497	490	484	+121	-13	-6	+108	+471	28.72%	561
Registrars		0	0	0		-0	-0	-0	-0		-100.00%	
Medical/ Dental, other	2	8	4	4	4	-4	-1	-1	-5	+2	-56.27%	12
Medical & Dental	2	8	5	5	4	-4	-1	-1	-5	+2	-58.15%	12
Nurse/ Midwife Manager		6	6	6	6	-0	-0	+0	-0	+6	-3.92%	7
Nurse/ Midwife Specialist & AN/MP		1	2	2	2	+1	-0	-0	+1	+2	103.41%	2
Staff Nurse/ Staff Midwife		11	10	9	9	-1	-1	+0	-2	+9	-14.63%	12
Nursing & Midwifery	18	18	18	17	17	+0	-1	+0	-1	+17	-5.13%	21
<i>Dietitians</i>		18	24.04	22	22	+6	-2	-0	+4	+22	21.31%	29
<i>Occupational Therapists</i>		81	89.58	88	87	+9	-3	-1	+6	+87	7.59%	100
<i>Physiotherapists</i>		54	69.73	71	69	+16	-1	-3	+15	+69	27.05%	84
<i>Podiatrists & Chiropodists</i>		9	6.53	6	7	-3	+0	+0	-2	+7	-24.73%	8
<i>Speech & Language Therapists</i>		57	74.25	76	75	+17	+0	-1	+18	+75	31.27%	86
Therapy Professions		219	264	263	259	+46	-6	-5	+40	+259	18.32%	307
Social Workers		8	29	28	29	+21	-1	+0	+20	+29	248.84%	32
Pharmacy			2	2	2	+2	+0	+0	+2	+2	-100.00%	2
Health & Social Care Professionals		227	295	293	289	+69	-6	-4	+62	+289	27.55%	341
Management (VIII & above)	6	11	17	16	16	+6	-1	+0	+5	+10	46.61%	16
Administrative/ Supervisory (V to VII)	5	38	64	64	63	+26	-1	-1	+25	+58	65.71%	66
Clerical (III & IV)		57	78	76	76	+21	-2	+1	+19	+76	33.07%	84
Management & Administrative	11	106	159	155	155	+53	-4	-0	+49	+144	46.08%	166
Support		1	1	1	1	+0	-0	+0	-0	+1	-23.33%	2
Maintenance/ Technical		1				-1			-1		-100.00%	
General Support	2	1	1	1	1	-1	-0	+0	-1	+1	-63.68%	2
Health Care Assistants		2	5	5	4	+3	-0	-1	+3	+4	135.98%	5
Care, other		13	15	14	14	+2	-1	+0	+1	+14	8.37%	14
Patient & Client Care		15	19	19	18	+5	-1	-0	+4	+18	24.80%	19



Employment Report by Grade Group: MAY 2024

Employment by Grade Group MAY 2024	WTE DEC 2019	WTE DEC 2022	WTE DEC 2023	WTE APR 2024	WTE MAY 2024	WTE Change 2023	WTE Change 2024	WTE Change APR 2024	WTE Change Dec 2022 to MAY 2024	WTE Change Dec 2019 to MAY 2024	% WTE Change Dec 2022 to MAY 2024	No. MAY 2024
Overall	8,189	8,961	8,968	9,277	9,288	+7	+320	+11	+327	+1,099	3.65%	11,380
Consultant Anaesthesia											-100.00%	
Consultant Dentistry	2	5	5	5	5	+0	+0	+0	+0	+3	8.33%	6
Consultant Medicine	1	1	2	4	4	+0	+3	+0	+3	+3	259.17%	8
Consultant Paediatrics	1	1	1	1	1	+0	-0	-0	-0	+0	-2.83%	2
Consultant Psychiatry	51	61	66	66	65	+4	-1	-1	+4	+14	5.93%	73
Consultant Surgery		1	1	1	1	+0	+0	+0	+0	+1	0.00%	2
Consultants	55	70	75	78	77	+5	+2	-1	+7	+22	10.21%	91
Registrar	85	76	89	90	89	+13	+0	-1	+13	+4	17.60%	91
Senior Registrar	12	17	20	16	17	+2	-3	+1	-1	+5	-4.72%	17
Specialist Registrar	7	3	3	5	5	-0	+3	+0	+2	-2	70.00%	6
Registrars	103	96	111	111	110	+15	-1	-0	+15	+7	15.19%	114
Interns	3	1	2	3	2	+1	-0	-1	+1	-1	95.96%	2
Senior House Officer	35	45	56	62	62	+10	+6	-0	+16	+27	35.70%	63
SHO/ Interns	38	46	58	65	64	+11	+6	-1	+17	+25	36.99%	65
Dentists	62	69	71	66	67	+1	-4	+1	-3	+5	-3.76%	118
Other Medical	49	70	62	62	63	-9	+1	+1	-7	+14	-10.66%	117
Medical/ Dental, other	111	140	133	128	130	-7	-3	+2	-10	+18	-7.22%	235
Medical & Dental	308	352		381	380	+24	+4	-1	+29	+73	8.18%	505
Clinical Nurse/ Midwife Manager 1	66	54	47	58	55	-6	+8	-3	+1	-12	2.24%	64
Clinical Nurse/ Midwife Manager 2	240	292	291	297	305	-1	+15	+9	+14	+66	4.70%	330
Clinical Nurse/ Midwife Manager 3	31	36	38	42	41	+2	+3	-0	+6	+10	15.65%	44
Director Nursing/Midwifery, Assistant	60	69	79	84	82	+10	+3	-2	+13	+22	18.72%	86
Director of Nursing/Midwifery	35	40	43	41	41	+3	-2	-0	+1	+6	3.24%	43
Nurse/ Midwife Manager	433	490	497	522	524	+8	+27	+3	+35	+92	7.09%	567
Advanced Nurse/ Midwife Practitioner	7	8	9	9	9	+0	+0	-0	+0	+2	3.91%	9
Adv. Nurse/ Midwife, Candidate		1	14	11	11	+13	-2	+1	+10	+11	1,046.00%	12
Clinical Nurse/ Midwife Specialist	74	96	124	147	146	+28	+21	-1	+49	+71	51.41%	166
Nurse/ Midwife Specialist & AN/MP	81	106	147	166	166	+41	+19	-0	+60	+85	57.03%	187
Staff Midwives	8	4	3	3	3	-1	+0	-0	-1	-5	-30.89%	4
Staff Nurse [Intellectual Disability]	87	152	168	178	181	+16	+12	+3	+28	+94	18.72%	220
Staff Nurse [Psychiatric]	469	447	456	441	431	+9	-25	-10	-16	-37	-3.49%	467
Staff Nurses [General/ Children's]	882	929	861	944	940	-68	+79	-4	+11	+58	1.13%	1,170
Staff Nurse/ Staff Midwife	1,446	1,532	1,488	1,565	1,554	-44	+66	-11	+22	+109	1.45%	1,861
Public Health Nurse	216	216	209	207	195	-8	-14	-12	-22	-21	-9.97%	267
Public Health Nurse	216	216	209	207	195	-8	-14	-12	-22	-21	-9.97%	267
Nursing/ Midwifery awaiting registration	32		6	1	1	+6	-5	+0	+1	-31	-100.00%	1
Post-registration Nurse/ Midwife Student	19	11	20	21	17	+9	-3	-4	+6	-2	55.25%	17
Pre-registration Nurse/ Midwife Intern	9	7	2	32	31	-6	+29	-1	+24	+22	318.97%	64
Nursing/ Midwifery Student	60	18	27	53	49	+9	+22	-5	+31	-11	166.88%	82
Nursing Education/Clinical	1	1	1	3	3	+0	+2	+0	+2	+2	200.00%	3
Nursing/ Midwifery other	1	1	1	3	3	+0	+2	+0	+2	+2	200.00%	3
Nursing & Midwifery	2,235	2,363		2,516	2,491	+6	+122	-25	+128	+256	5.42%	2,967
Dietitians	28	36	42	43	42	+6	+1	-0	+6	+15	17.07%	52
Occupational Therapists	169	227	239	236	235	+12	-4	-1	+8	+66	3.61%	266
Orthoptists	3	1	1	1	1	-1	+0	+0	-1	-3	-50.00%	1
Physiotherapists	106	126	134	140	137	+8	+3	-3	+11	+30	8.59%	165
Podiatrists & Chiropodists	6	16	13	14	14	-3	+1	+0	-2	+7	-11.62%	15
Speech & Language Therapists	134	144	151	154	154	+7	+3	+0	+10	+20	7.17%	181
Therapy Professions	448	549	579	586	583	+30	+4	-4	+33	+135	6.04%	680
Audiology	7	9	8	8	8	-1	-0	-0	-1	+1	-13.59%	9
Physicists	2	2	2	2	2	-0	+0	-0	+0	-0	5.56%	2
Radiographers	3	3	3	3	3	+0	+0	-0	+0	+0	0.00%	4
Health Science/ Diagnostics	12	14	13	13	13	-1	-0	-0	-1	+1	-8.33%	15
Social Care	240	272	278	287	295	+6	+17	+8	+23	+55	8.48%	335

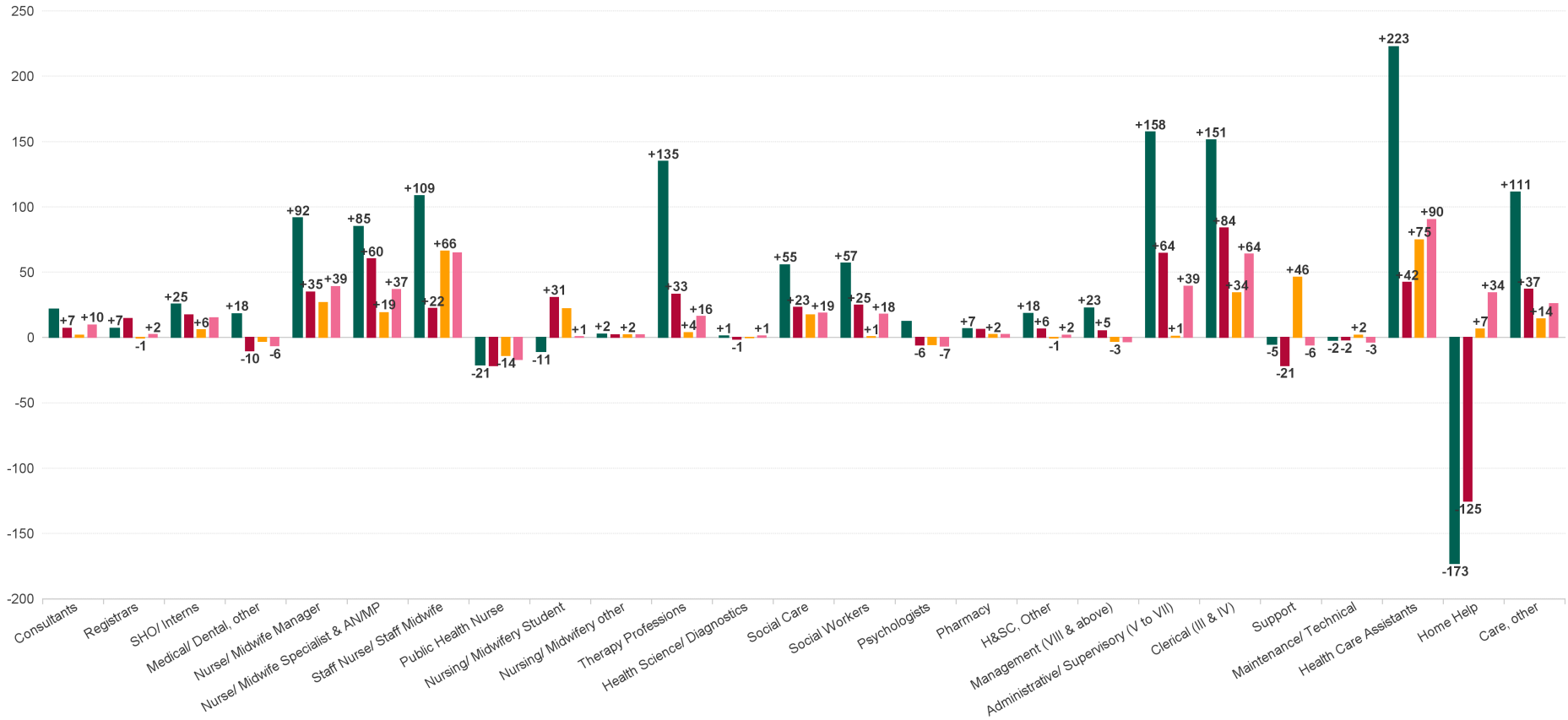


Employment by Grade Group MAY 2024	WTE DEC 2019	WTE DEC 2022	WTE DEC 2023	WTE APR 2024	WTE MAY 2024	WTE Change 2023	WTE Change 2024	WTE Change APR 2024	WTE Change Dec 2022 to MAY 2024	WTE Change Dec 2019 to MAY 2024	% WTE Change Dec 2022 to MAY 2024	No. MAY 2024
Overall	8,189	8,961	8,968	9,277	9,288	+7	+320	+11	+327	+1,099	3.65%	11,380
Social Care	240	272	278	287	295	+6	+17	+8	+23	+55	8.48%	335
Social Workers	115	147	171	172	172	+24	+1	-0	+25	+57	16.87%	193
Social Workers	115	147	171	172	172	+24	+1	-0	+25	+57	16.87%	193
Psychologists	138	156	156	150	150	-0	-6	+0	-6	+12	-3.63%	168
Psychologists	138	156	156	150	150	-0	-6	+0	-6	+12	-3.63%	168
Pharmacists	7	8	11	13	13	+3	+2	-0	+5	+6	69.38%	19
Pharmacy Technicians	1	1	2	1	2	+1	+0	+0	+1	+1	85.00%	2
Pharmacy	8	9	12	15	15	+4	+2	+0	+6	+7	71.20%	21
Counsellor Therapists	41	43	50	52	51	+8	+1	-1	+8	+10	19.44%	57
Dental Hygienists	8	9	9	8	8	-1	-1	+0	-2	-0	-16.97%	12
Other Health & Social Care	11	9	13	13	13	+3	+0	+0	+4	+2	38.43%	15
Play Therapists/ Specialists	1	2	2	3	3	+0	+1	+0	+1	+2	21.16%	4
Vaccinators		9	5	4	4	-3	-1	+0	-4	+4	-50.41%	14
H&SC, Other	60	72	79	79	79	+7	-1	-1	+6	+18	8.90%	102
Health & Social Care Professionals	1,020	1,219		1,302	1,306	+69	+18	+4	+87	+286	7.11%	1,514
Executive Management	15	16	20	18	18	+4	-2	-0	+2	+3	10.50%	18
Senior Management (VIII & GM)	58	74	78	79	78	+4	-1	-1	+3	+20	4.70%	84
Management (VIII & above)	73	90	98	96	95	+8	-3	-1	+5	+23	5.73%	102
Middle Management (V-VII)	161	254	317	319	319	+63	+1	-1	+64	+158	25.34%	341
Administrative/ Supervisory (V to VII)	161	254	317	319	319	+63	+1	-1	+64	+158	25.34%	341
General Administrative (III & IV)	505	572	622	658	656	+50	+34	-2	+84	+151	14.66%	783
Clerical (III & IV)	505	572	622	658	656	+50	+34	-2	+84	+151	14.66%	783
Management & Administrative	738	916		1,074	1,070	+121	+32	-4	+153	+331	16.74%	1,226
Catering	60	53	52	55	55	-0	+3	-0	+2	-5	4.12%	60
Household Services	190	213	195	234	236	-18	+41	+2	+23	+46	10.61%	295
Other Support	74	75	23	23	22	-52	-1	-1	-53	-52	-70.90%	31
Portering	13	12	16	20	19	+3	+4	-0	+7	+6	55.97%	26
Support	337	353	286	332	332	-68	+46	+0	-21	-5	-6.08%	412
Maintenance	21	19	16	19	18	-3	+2	-1	-1	-3	-4.79%	20
Technical Services	1	3	2	2	2	-1	+0	+0	-1	+1	-33.33%	2
Maintenance/ Technical	22	22	18	21	20	-4	+2	-1	-2	-2	-8.68%	22
General Support	359	375		353	352	-71	+48	-1	-23	-7	-6.24%	434
Attendant/ Aide	701	554	495	493	491	-60	-4	-2	-63	-210	-11.42%	583
Health Care Assistant/ Care Assistant	1,245	1,565	1,578	1,625	1,650	+13	+73	+25	+86	+405	5.48%	1,930
Health & Social Care Assistants	8	16	30	36	36	+14	+6	-0	+20	+27	127.77%	39
Health Care Assistants	1,954	2,135	2,102	2,154	2,177	-32	+75	+23	+42	+223	1.98%	2,552
Home Helps	1,124	1,076	944	942	950	-132	+7	+8	-125	-173	-11.66%	1,495
Home Help	1,124	1,076	944	942	950	-132	+7	+8	-125	-173	-11.66%	1,495
Health Promotion		15	18	19	19	+4	+0	-0	+4	+19	27.85%	23
Home Care Services	29	32	35	34	34	+3	-1	+0	+2	+5	5.78%	39
Other Care Grades	127	163	162	162	167	-1	+5	+5	+4	+40	2.24%	206
Pastoral Care	7	5	5	9	8	+1	+2	-1	+3	+1	74.50%	24
Workshop Services	287	310	326	332	334	+16	+8	+2	+24	+47	7.72%	395
Care, other	450	524	547	555	561	+23	+14	+7	+37	+111	7.03%	687
Patient & Client Care	3,528	3,735		3,651	3,689	-142	+96	+38	-46	+161	-1.24%	4,734



WTE Change by Staff Group

■ WTE change since DEC 2019
 ■ WTE change since DEC 2022
 ■ WTE change since DEC 2023
 ■ WTE change since MAY 2023



Employment Report by WTE, Headcount, Gender, Full-Time / Part-Time etc. MAY 2024

Demographic Grade Group MAY 2024	WTE MAY 2024	No. MAY 2024	WTE : No	Number Male %	Number Female %	Male WTE : No.	Female WTE : No	Perm Count %	Perm Count Male %	Perm Count Female %	Fulltime Count %	Part time Count %	FT Count Male %	FT Count Female %
Total	9,288	11,380	1:0.8	16.47%	83.53%	1:0.9	1:0.8	82.54%	12.88%	69.66%	57.76%	42.24%	75.88%	54.19%
Consultant Medicine	4.31	8	1:0.5	12.50%	87.50%	1:0.5	1:0.5	75.00%	12.50%	62.50%	25.00%	75.00%		28.57%
Consultant Psychiatry	64.89	73	1:0.9	38.36%	61.64%	1:0.9	1:0.9	53.42%	21.92%	31.51%	79.45%	20.55%	85.71%	75.56%
Dentists	66.88	118	1:0.6	26.27%	73.73%	1:0.5	1:0.6	72.03%	19.49%	52.54%	22.03%	77.97%	16.13%	24.14%
Other Medical	62.69	117	1:0.5	37.61%	62.39%	1:0.5	1:0.6	55.56%	16.24%	39.32%	14.53%	85.47%	15.91%	13.70%
Registrar	88.81	91	1:1	41.76%	58.24%	1:1	1:1				97.80%	2.20%	100.00%	96.23%
Senior House Officer	61.69	63	1:1	42.86%	57.14%	1:1	1:1				98.41%	1.59%	100.00%	97.22%
Senior Registrar	16.55	17	1:1	29.41%	70.59%	1:1	1:1	5.88%	5.88%		94.12%	5.88%	100.00%	91.67%
Specialist Registrar	5.1	6	1:0.9		100.00%	1:	1:0.9	33.33%		33.33%	66.67%	33.33%		66.67%
Consultant Dentistry	5.2	6	1:0.9	33.33%	66.67%	1:1	1:0.8	83.33%	33.33%	50.00%	66.67%	33.33%	100.00%	50.00%
Interns	1.94	2	1:1	50.00%	50.00%	1:1	1:1				100.00%		100.00%	100.00%
Consultant Paediatrics	1.03	2	1:0.5		100.00%	1:	1:0.5	100.00%		100.00%		100.00%		
Consultant Surgery	1.33	2	1:0.7	100.00%		1:0.7	1:	100.00%	100.00%		50.00%	50.00%	50.00%	
Medical & Dental	380	505	1:0.8	35.45%	64.55%	1:0.8	1:0.7	40.99%	12.67%	28.32%	55.64%	44.36%	61.45%	52.45%
Clinical Nurse/ Midwife Manager 2	305.44	330	1:0.9	16.67%	83.33%	1:1	1:0.9	95.76%	16.06%	79.70%	83.33%	16.67%	96.36%	80.73%
Clinical Nurse/ Midwife Specialist	145.58	166	1:0.9	12.05%	87.95%	1:0.9	1:0.9	99.40%	12.05%	87.35%	71.08%	28.92%	100.00%	67.12%
Director of Nursing/Midwifery	40.8	43	1:0.9	4.65%	95.35%	1:1	1:0.9	90.70%	4.65%	86.05%	93.02%	6.98%	100.00%	92.68%
Public Health Nurse	194.83	267	1:0.7		100.00%	1:	1:0.7	95.13%		95.13%	52.06%	47.94%		52.06%
Staff Nurse [Psychiatric]	431.45	467	1:0.9	28.69%	71.31%	1:1	1:0.9	81.37%	23.34%	58.03%	87.15%	12.85%	93.28%	84.68%
Staff Nurses [General/ Children's]	939.56	1,170	1:0.8	5.56%	94.44%	1:1	1:0.8	73.50%	3.85%	69.66%	47.52%	52.48%	78.46%	45.70%
Post-registration Nurse/ Midwife Student	17	17	1:1	5.88%	94.12%	1:1	1:1	29.41%		29.41%	100.00%		100.00%	100.00%
Pre-registration Nurse/ Midwife Intern	30.92	64	1:0.5	6.25%	93.75%	1:0.5	1:0.5				100.00%		100.00%	100.00%
Staff Nurse [Intellectual Disability]	180.52	220	1:0.8	7.27%	92.73%	1:0.8	1:0.8	94.55%	6.36%	88.18%	75.45%	24.55%	87.50%	74.51%
Advanced Nurse/ Midwife Practitioner	8.78	9	1:1	11.11%	88.89%	1:1	1:1	88.89%	11.11%	77.78%	88.89%	11.11%	100.00%	87.50%
Clinical Nurse/ Midwife Manager 1	54.75	64	1:0.9	7.81%	92.19%	1:0.9	1:0.8	93.75%	7.81%	85.94%	59.38%	40.63%	80.00%	57.63%
Clinical Nurse/ Midwife Manager 3	41.38	44	1:0.9	13.64%	86.36%	1:1	1:0.9	95.45%	13.64%	81.82%	81.82%	18.18%	100.00%	78.95%
Director Nursing/Midwifery, Assistant	81.92	86	1:1	19.77%	80.23%	1:1	1:0.9	100.00%	19.77%	80.23%	89.53%	10.47%	94.12%	88.41%
Staff Midwives	2.64	4	1:0.7		100.00%	1:	1:0.7	75.00%		75.00%	25.00%	75.00%		25.00%
Adv. Nurse/ Midwife, Candidate	11.46	12	1:1	8.33%	91.67%	1:0.9	1:1	75.00%	8.33%	66.67%	100.00%		100.00%	100.00%



Demographic Grade Group MAY 2024	WTE MAY 2024	No. MAY 2024	WTE : No	Number Male %	Number Female %	Male WTE : No.	Female WTE : No	Perm Count %	Perm Count Male %	Perm Count Female %	Fulltime Count %	Part time Count %	FT Count Male %	FT Count Female %
Total	9,288	11,380	1:0.8	16.47%	83.53%	1:0.9	1:0.8	82.54%	12.88%	69.66%	57.76%	42.24%	75.88%	54.19%
Nursing Education/Clinical	3	3	1:1	33.33%	66.67%	1:1	1:1	100.00%	33.33%	66.67%	100.00%		100.00%	100.00%
Nursing/ Midwifery awaiting registration	1	1	1:1		100.00%	1:	1:1				100.00%			100.00%
Nursing & Midwifery	2,491	2,967	1:0.8	11.05%	88.95%	1:0.9	1:0.8	82.17%	9.23%	72.94%	65.99%	34.01%	91.16%	62.86%
Other Health & Social Care	12.68	15	1:0.8	20.00%	80.00%	1:0.8	1:0.8	80.00%	6.67%	73.33%	73.33%	26.67%	66.67%	75.00%
Pharmacists	12.89	19	1:0.7	21.05%	78.95%	1:0.4	1:0.8	89.47%	15.79%	73.68%	36.84%	63.16%	25.00%	40.00%
Physiotherapists	136.71	165	1:0.8	19.39%	80.61%	1:0.9	1:0.8	91.52%	16.97%	74.55%	60.61%	39.39%	90.63%	53.38%
Psychologists	150.12	168	1:0.9	16.67%	83.33%	1:1	1:0.9	78.57%	15.48%	63.10%	76.19%	23.81%	96.43%	72.14%
Social Care	295.37	335	1:0.9	17.61%	82.39%	1:0.9	1:0.9	91.64%	15.52%	76.12%	77.01%	22.99%	93.22%	73.55%
Social Workers	171.56	193	1:0.9	18.13%	81.87%	1:1	1:0.9	89.12%	16.06%	73.06%	79.79%	20.21%	94.29%	76.58%
Vaccinators	4.26	14	1:0.3	21.43%	78.57%	1:0.3	1:0.3					100.00%		
Occupational Therapists	235.04	266	1:0.9	6.39%	93.61%	1:0.9	1:0.9	93.23%	5.64%	87.59%	77.82%	22.18%	70.59%	78.31%
Pharmacy Technicians	1.85	2	1:0.9		100.00%	1:	1:0.9	50.00%		50.00%	100.00%			100.00%
Speech & Language Therapists	154.15	181	1:0.9	2.76%	97.24%	1:1	1:0.8	88.95%	2.21%	86.74%	66.30%	33.70%	80.00%	65.91%
Audiology	8.2	9	1:0.9	22.22%	77.78%	1:1	1:0.9	66.67%	22.22%	44.44%	77.78%	22.22%	100.00%	71.43%
Counsellor Therapists	50.99	57	1:0.9	40.35%	59.65%	1:1	1:0.9	98.25%	40.35%	57.89%	75.44%	24.56%	91.30%	64.71%
Dental Hygienists	7.73	12	1:0.6	8.33%	91.67%	1:1	1:0.6	100.00%	8.33%	91.67%	33.33%	66.67%	100.00%	27.27%
Dietitians	42.38	52	1:0.8	1.92%	98.08%	1:1	1:0.8	98.08%	1.92%	96.15%	61.54%	38.46%	100.00%	60.78%
Play Therapists/ Specialists	2.92	4	1:0.7	25.00%	75.00%	1:0.5	1:0.8	100.00%	25.00%	75.00%	25.00%	75.00%		33.33%
Podiatrists & Chiropodists	13.77	15	1:0.9	6.67%	93.33%	1:1	1:0.9	100.00%	6.67%	93.33%	73.33%	26.67%	100.00%	71.43%
Radiographers	3.3	4	1:0.8		100.00%	1:	1:0.8	100.00%		100.00%	75.00%	25.00%		75.00%
Physicists	1.71	2	1:0.9		100.00%	1:	1:0.9	100.00%		100.00%	100.00%			100.00%
Orthoptists	0.5	1	1:0.5		100.00%	1:	1:0.5					100.00%		
Health & Social Care Professionals	1,306	1,514	1:0.9	14.20%	85.80%	1:0.9	1:0.9	89.23%	12.48%	76.75%	71.99%	28.01%	87.91%	69.36%
General Administrative (III & IV)	655.98	783	1:0.8	8.81%	91.19%	1:0.9	1:0.8	78.29%	7.15%	71.14%	59.64%	40.36%	85.51%	57.14%
Middle Management (V-VII)	318.5	341	1:0.9	18.77%	81.23%	1:1	1:0.9	97.36%	18.77%	78.59%	87.39%	12.61%	96.88%	85.20%
Senior Management (VIII & GM)	77.68	84	1:0.9	27.38%	72.62%	1:1	1:0.9	96.43%	27.38%	69.05%	96.43%	3.57%	100.00%	95.08%
Executive Management	17.68	18	1:1	11.11%	88.89%	1:1	1:1	100.00%	11.11%	88.89%	100.00%		100.00%	100.00%
Management & Administrative	1,070	1,226	1:0.9	12.89%	87.11%	1:1	1:0.9	85.15%	11.83%	73.33%	70.47%	29.53%	92.41%	67.23%
Household Services	235.61	295	1:0.8	24.75%	75.25%	1:0.8	1:0.8	71.86%	15.59%	56.27%	46.44%	53.56%	61.64%	41.44%
Other Support	21.82	31	1:0.7	38.71%	61.29%	1:0.9	1:0.6	54.84%	32.26%	22.58%	54.84%	45.16%	91.67%	31.58%
Portering	19.2	26	1:0.7	100.00%		1:0.7	1:	92.31%	92.31%		65.38%	34.62%	65.38%	
Catering	55.11	60	1:0.9	36.67%	63.33%	1:0.9	1:0.9	91.67%	33.33%	58.33%	80.00%	20.00%	90.91%	73.68%
Maintenance	18.1	20	1:0.9	85.00%	15.00%	1:0.9	1:0.9	95.00%	80.00%	15.00%	75.00%	25.00%	82.35%	33.33%



Demographic Grade Group MAY 2024	WTE MAY 2024	No. MAY 2024	WTE : No	Number Male %	Number Female %	Male WTE : No.	Female WTE : No	Perm Count %	Perm Count Male %	Perm Count Female %	Fulltime Count %	Part time Count %	FT Count Male %	FT Count Female %
Total	9,288	11,380	1:0.8	16.47%	83.53%	1:0.9	1:0.8	82.54%	12.88%	69.66%	57.76%	42.24%	75.88%	54.19%
Technical Services	2	2	1:1	100.00%		1:1	1:	100.00%	100.00%		100.00%		100.00%	
General Support	352	434	1:0.8	35.02%	64.98%	1:0.8	1:0.8	75.81%	27.19%	48.62%	54.38%	45.62%	71.71%	45.04%
Attendant/ Aide	490.9	583	1:0.8	18.18%	81.82%	1:0.9	1:0.8	80.62%	14.07%	66.55%	49.91%	50.09%	76.42%	44.03%
Health & Social Care Assistants	35.51	39	1:0.9	23.08%	76.92%	1:1	1:0.9	41.03%	10.26%	30.77%	82.05%	17.95%	100.00%	76.67%
Health Care Assistant/ Care Assistant	1,650.45	1,930	1:0.9	23.68%	76.32%	1:0.9	1:0.8	84.72%	20.00%	64.72%	66.79%	33.21%	76.15%	63.88%
Home Care Services	33.87	39	1:0.9	12.82%	87.18%	1:0.7	1:0.9	89.74%	7.69%	82.05%	74.36%	25.64%	40.00%	79.41%
Home Helps	950.47	1,495	1:0.6	8.16%	91.84%	1:0.8	1:0.6	90.77%	6.76%	84.01%	8.56%	91.44%	29.51%	6.70%
Other Care Grades	166.96	206	1:0.8	7.28%	92.72%	1:1	1:0.8	89.32%	7.28%	82.04%	52.91%	47.09%	100.00%	49.21%
Pastoral Care	7.87	24	1:0.3	91.67%	8.33%	1:0.3	1:0.6	50.00%	41.67%	8.33%	4.17%	95.83%	4.55%	
Workshop Services	334.03	395	1:0.8	26.84%	73.16%	1:0.9	1:0.8	73.92%	18.99%	54.94%	63.80%	36.20%	72.64%	60.55%
Health Promotion	18.59	23	1:0.8		100.00%	1:	1:0.8	100.00%		100.00%	56.52%	43.48%		56.52%
Patient & Client Care	3,689	4,734	1:0.8	17.79%	82.21%	1:0.9	1:0.8	85.00%	14.28%	70.72%	45.29%	54.71%	67.58%	40.47%



CHO 4 MAY 2024

Demographic Hospital MAY 2024	WTE MAY 2024	No. MAY 2024	WTE : No	Number Male %	Number Female %	Male WTE : No.	Female WTE : No	Perm Count %	Perm Count Male %	Perm Count Female %	Fulltime Count %	Part time Count %	FT Count Male %	FT Count Female %
Total	9,288	11,380	1:0.8	16.47%	83.53%	1:0.9	1:0.8	82.54%	12.88%	69.66%	57.76%	42.24%	75.88%	54.19%
Cork North	1,014	1,311	1:0.8	14.04%	85.96%	1:0.8	1:0.8	75.29%	8.39%	66.90%	47.67%	52.33%	73.37%	43.48%
Cork North Lee	1,082	1,337	1:0.8	15.41%	84.59%	1:0.9	1:0.8	81.97%	11.74%	70.23%	55.95%	44.05%	83.50%	50.93%
Cork South Lee	1,933	2,386	1:0.8	17.27%	82.73%	1:0.9	1:0.8	83.45%	14.50%	68.94%	54.40%	45.60%	79.85%	49.09%
Cork West	3,275	3,974	1:0.8	18.44%	81.56%	1:0.9	1:0.8	83.92%	14.77%	69.15%	63.54%	36.46%	73.53%	61.28%
Kerry	1,500	1,811	1:0.8	15.57%	84.43%	1:0.9	1:0.8	83.10%	12.09%	71.01%	54.39%	45.61%	71.99%	51.14%
Other CHO 4	484	561	1:0.9	10.16%	89.84%	1:0.9	1:0.9	85.38%	8.38%	77.01%	69.88%	30.12%	77.19%	69.05%



Month-on-Month Summary

WTE change since APR 2024		% WTE change since APR 2024	Overall	Consultants	Registrars	SHO/Interns	Medical/Dental/other	Medical & Dental	Nurse/Midwife/Manager	Nurse/Midwife/Specialist & ANMP	Staff Nurse/Staff Midwife	Public Health Nurse	Nursing/Midwifery Student	Nursing/Midwifery other	Nursing & Midwifery	Therapy Professionals	Health Science/Diagnostics	Social Care	Social Workers	Psychologists	Pharmacy	H&SC Other	Health & Social Care Professionals	Management (VII & above)	Administrative/Supervisory (V to VI)	Clinical (III & IV)	Management & Administrative	Support	Maintenance/Technical	General Support	Health Care Assistants	Home Help	Care other	Patient & Client Care
Overall		+6.12%	+11.3	-6.8	-6.3	-1.6	+1.5	-6.8	+2.8	-6.5	-11.1	-11.9	-4.8	+0.6	-25.2	-3.5	-0.2	+8.8	-6.4	+6.3	+6.2	-6.6	+3.6	-1.1	-0.7	-1.9	-3.7	+6.1	-6.9	-0.8	+23.0	+6.5	+6.5	+28.0
Cork North Lee	46015	-0.75%	-8.1	+1.1	+0.1	-0.0	+0.1	+1.2	-2.8	-1.6	-5.1	-1.6	+0.5		-10.6	-0.6		-0.8	+0.9	-0.7	+0.0	-1.0	-2.2	-0.0	-0.3	-0.6	-0.9	-0.9	+0.0	-0.9	+3.1	+1.9	+0.2	+5.2
Cork South Lee	46016	-0.12%	-2.4	-1.9	+0.7	-0.8	+0.3	-1.6	+4.8	-0.6	+1.0	-3.4	-4.5	+0.0	-2.7	-0.2	-0.1	+0.6	-1.7	-1.0	+0.1	+0.1	-2.1	+0.1	-0.6	+2.0	+1.5	-0.1	+0.0	-0.1	+1.7	+0.5	+0.4	+2.6
Cork North	46017	-0.37%	-3.8	-0.3	-0.9	-0.8	+2.1	+0.1	+0.3	-0.3	-2.9	-1.9	+0.0	+0.0	-4.7	-0.5	+0.0		-0.1	+0.2	+0.0	+0.2	-0.2	+0.0	+0.2	-5.5	-5.3	+0.1	+0.0	+0.1	-1.6	+3.1	+4.8	+6.3
Cork West	46018	+1.06%	+34.3	-0.0	+0.0	+0.0	+0.2	+0.1	-0.1	+0.0	+1.5	-2.2	-0.2	+0.0	-1.0	+3.0	-0.1	+8.1	+0.5	+1.9	+0.0	+0.0	+13.3	-1.1	+1.4	-1.1	-0.7	-0.4	-0.9	-1.3	+23.9	-0.9	+0.8	+23.9
Kerry	46019	-0.19%	-2.8	+0.2	+0.0	+0.7	-0.4	+0.5	+0.6	+2.2	-5.8	-2.8	-0.4		-6.2	-0.7	+0.0	+0.0	-0.5	-0.1	+0.0	+0.1	-1.1	-0.2	-0.2	+2.5	+2.2	+1.4	+0.0	+1.4	-3.7	+3.9	+0.3	+0.5
Other CHO 4	46037	-1.20%	-5.9		-0.2		-0.6	-1.0	+0.1	-0.1	+0.1				+0.1	-4.5			+0.4		+0.0		-4.1	+0.1	-1.2	+0.7	-0.4	+0.0		+0.0	-0.5		+0.0	-0.5

CHO 4 Employment Report: MAY 2024

Year-to-Date Summary

WTE change since DEC 2023	% WTE change since DEC 2023	Overall	Consultants	Registrars	SHO/ Interns	Medical/ Dental, other	Medical & Dental	Nurse/ Midwife Manager	Nurse/ Midwife Specialist & AN/MP	Staff Nurse/ Staff Midwife	Public Health Nurse	Nursing/ Midwifery Student	Nursing/ Midwifery other	Nursing & Midwifery	Therapy Professors	Health Science/ Diagnostics	Social Care	Social Workers	Psychologists	Pharmacy	H&SC, Other	Health & Social Care Professionals	Management (VIII & above)	Administrative / Supervisory (IV to VII)	Clerical (III & IV)	Management & Administrative	Support	Maintenance/ Technical	General Support	Health Care Assistants	Home Help	Care, other	Patient & Client Care
Overall	+3.57%	+320	+2	-1	+6	-3	+4	+27	+19	+66	-14	+22	+2	+122	+4	-0	+17	+1	-6	+2	-1	+18	-3	+1	+34	+32	+46	+2	+48	+75	+7	+14	+96
Cork North Lee	-2.56%	-28	+2	+2	-4	-1	-2	-0	-5	-10	-6	+1	-2	-20	+4		+1	+3	-5	+0	-3	+0	-1	-0	-3	-4	-3	+0	-3	+2	-2	+0	+1
Cork South Lee	+19.66%	+318	+1	+7	+2	-0	+11	+24	+22	+83	-3	+8	+1	+136	+9	+0	+2	+1	-5	+4	+4	+15	+4	+6	+27	+37	+49	+3	+52	+69	-2	-0	+67
Cork North	-0.29%	-3	-0	-5	+1	-1	-5	+4	+1	+0	-4	-4	+1	-2	-3	+0		-1	-0	-1	-1	-6	+0	-1	-1	-2	-1	+0	-1	-1	+6	+8	+13
Cork West	+1.72%	+55	-1	-2	+2	-1	-2	-1	-1	+3	-1	+7	+0	+8	+2	-0	+14	-1	+4	+0	-1	+19	-2	-0	+10	+7	+1	-1	+0	+17	-1	+7	+23
Kerry	-0.52%	-8	+0	-2	+5	+0	+4	+0	+2	-9	-0	+9		+2	-2	+0	+0	-1	+0	-1	-0	-4	-3	-3	+4	-2	+0	+0	+0	-12	+5	-1	-8
Other CHO 4	-2.69%	-13		-0		-1	-1	-0	-0	-1				-1	-6			-1		+0		-6	-1	-1	-2	-4	-0		-0		-1	-1	



CHO 4 Employment Report: MAY 2024

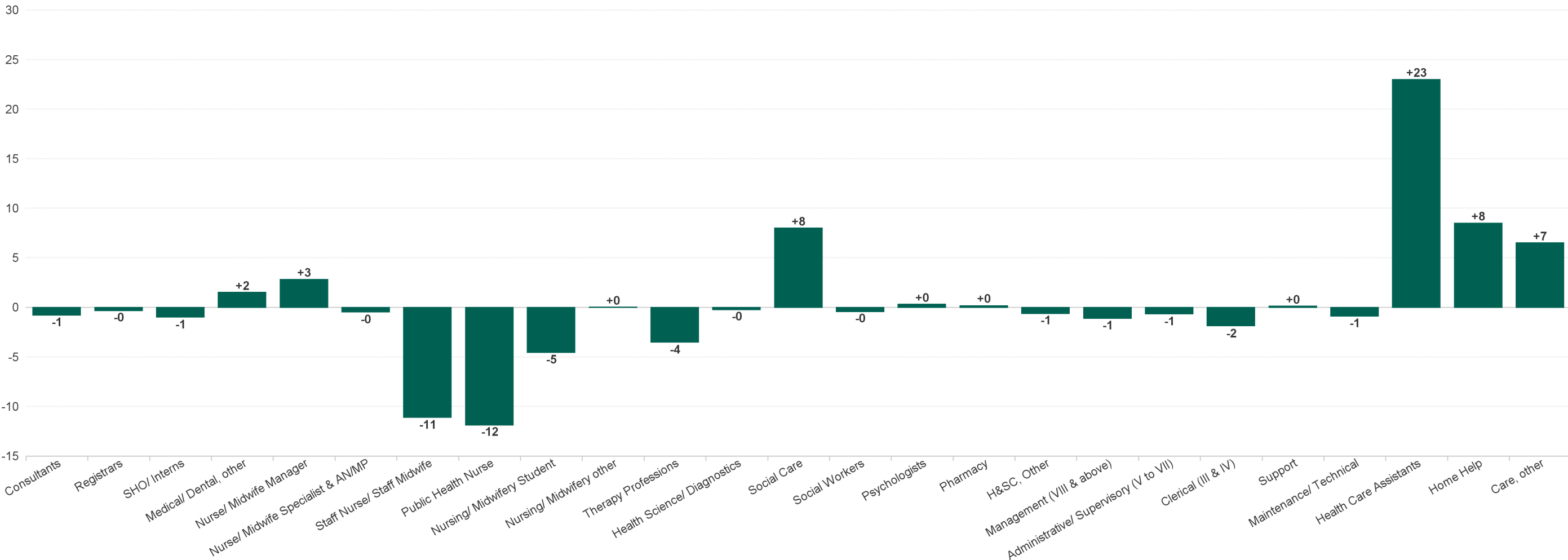
Year-on-Year Summary

WTE change since MAY 2023	% WTE change since MAY 2023	Overall	Consultants	Registrars	SHO/ Interns	Medical/ Dental, other	Medical & Dental	Nurse/ Midwife Manager	Nurse/ Midwife Specialist & ANMP	Staff Nurse/ Staff Midwife	Public Health Nurse	Nursing/ Midwifery Student	Nursing/ Midwifery other	Nursing & Midwifery	Therapy Professions	Health Sciences/ Diagnostics	Social Care	Social Workers	Psychologists	Pharmacy	H&SC, Other	Health & Social Care Professionals	Management (VIII & above)	Administrative / Supervisory (V to VII)	Clerical (III & IV)	Management & Administrative	Support	Maintenance/ Technical	General Support	Health Care Assistants	Home Help	Care, other	Patient & Client Care
Overall	+4.96%	+439	+10	+2	+15	-6	+21	+39	+37	+65	-17	+1	+2	+126	+16	+1	+19	+18	-7	+2	+2	+51	-3	+39	+64	+100	-6	-3	-9	+90	+34	+26	+150
Cork North Lee	-1.82%	-20	+4	+3	-2	+0	+6	+1	+1	-16	-9	+3		-20	+1		+1	+3	+2	+0	+0	+7	-4	-0	+5	+1	-2	+0	-2	-9	-3	-0	-12
Cork South Lee	+22.20%	+351	+5	+6	+8	-3	+15	+21	+30	+80	-1	+1	+1	+131	+6	+0	-2	-3	-7	+4	+2	+1	+7	+14	+46	+67	+50	+2	+52	+80	+3	+3	+86
Cork North	+2.07%	+21	-0	-2	+1	-3	-3	+11	+1	+6	-3	+0	+1	+16	-7	+0	-1	-2	-3	-1	+0	-14	-0	+3	+12	+15	-3	-3	-6	-2	+9	+6	+12
Cork West	+1.19%	+39	-1	-1	+1	-2	-2	+2	-1	-6	+1	-3	+0	-7	+10	+1	+21	+8	+1	+0	-2	+39	-2	+10	+9	+17	-51	-1	-53	+26	+1	+18	+44
Kerry	+1.13%	+17	+1	-4	+7	+1	+5	+7	+7	+2	-5	-0		+11	-10	+0	+0	-2	+1	-1	+2	-11	-5	+3	-5	-7	+1	+0	+1	-7	+25	-1	+18
Other CHO 4	+7.11%	+32		-0		-0	-8	-2	-1	-1				-5	+15			+14			+0	+29	+1	+9	-2	+8	-0	-1	-1	+2		+0	+2



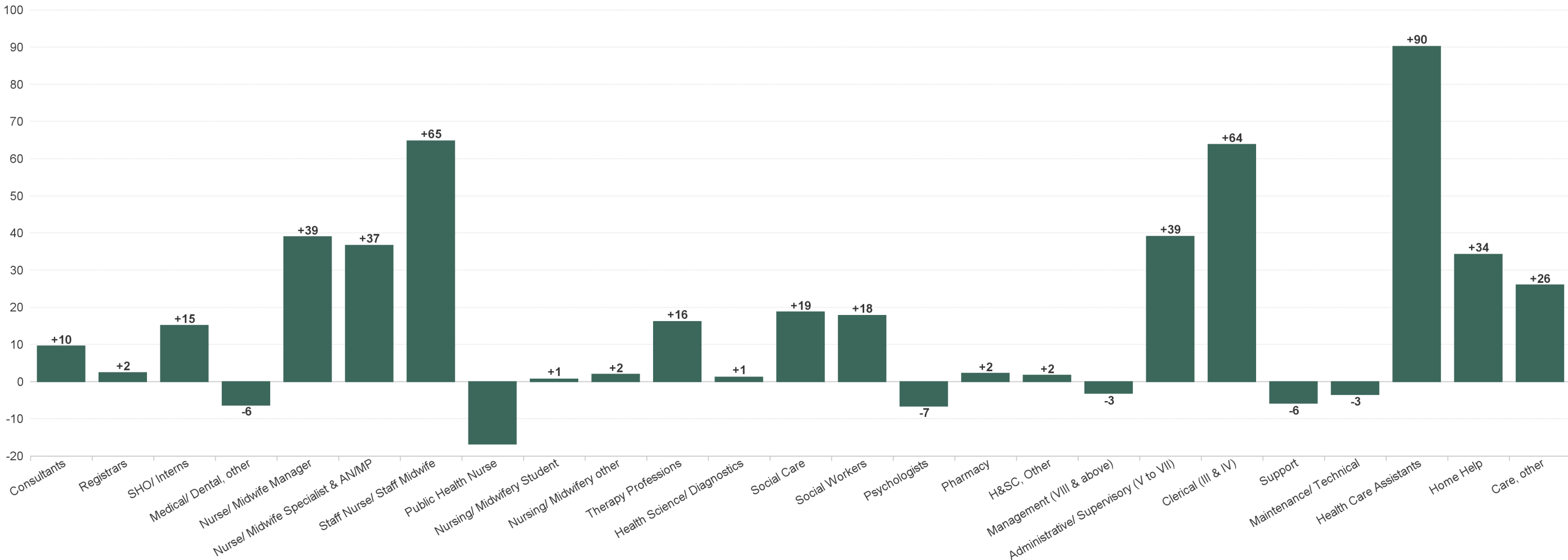
CHO 4 Employment Report: MAY 2024

Previous Month Summary Chart: Change since APR 2024



CHO 4 Employment Report: MAY 2024

Previous Year Summary Chart: Change since MAY 2023



CHO 4 Employment Report: MAY 2024

YTD Summary Chart: Change since DEC 2023

