

CHO 2 Employment Report: MAY 2024

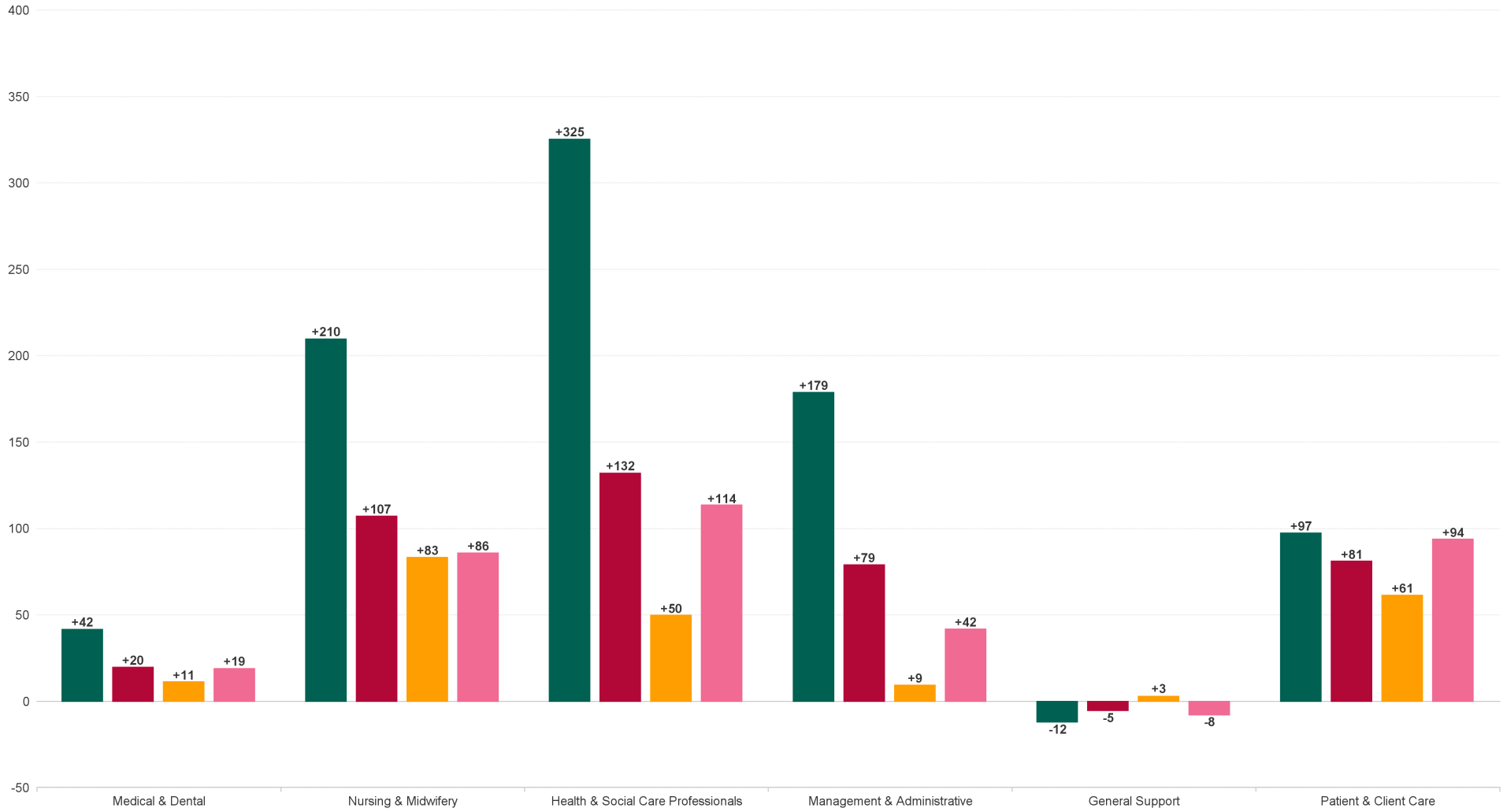
Employment by Staff Group (1) MAY 2024

Employment by Staff Group (1) MAY 2024	WTE DEC 2019	WTE DEC 2022	WTE DEC 2023	WTE APR 2024	WTE MAY 2024	WTE Change 2023	WTE Change 2024	WTE Change APR 2024	WTE Change Dec 2022 to MAY 2024	WTE Change Dec 2019 to MAY 2024	% WTE Change Dec 2022 to MAY 2024	No. MAY 2024
Overall	5,545	5,972	6,167	6,393	6,385	+195	+218	-7	+413	+841	6.92%	7,398
Consultants	42	43	51	52	50	+8	-1	-1	+7	+8	16.18%	57
Registrars	75	91	96	108	107	+6	+11	-1	+16	+32	18.15%	114
SHO/ Interns	36	43	40	39	39	-3	-1	-0	-4	+3	-9.99%	41
Medical/ Dental, other	59	57	55	59	58	-3	+3	-1	+0	-1	0.78%	76
Medical & Dental	212	234	242	257	254	+8	+11	-3	+20	+42	8.38%	288
Nurse/ Midwife Manager	309	331	336	356	351	+6	+15	-5	+21	+43	6.31%	375
Nurse/ Midwife Specialist & AN/MP	93	141	167	188	189	+26	+21	+0	+47	+96	33.53%	205
Staff Nurse/ Staff Midwife	898	916	905	957	951	-11	+46	-6	+35	+53	3.82%	1,082
Public Health Nurse	192	187	190	192	183	+2	-7	-9	-5	-9	-2.48%	219
Nursing/ Midwifery awaiting registration	5	7	15.25	2		+8	-15	-2	-7	-5	-100.00%	
Post-registration Nurse/ Midwife Student	4	14	11	12	12	-3	+1	+0	-2	+8	-16.90%	12
Pre-registration Nurse/ Midwife Intern	0	4		22	21	-4	+21	-0	+17	+21	420.25%	44
Nursing/ Midwifery Student	9	25	26	36	33	+1	+7	-2	+8	+24	29.74%	56
Nursing/ Midwifery other	2	4	4	5	5	+0	+1	+0	+1	+3	25.00%	5
Nursing & Midwifery	1,502	1,604	1,628	1,733	1,711	+24	+83	-22	+107	+210	6.68%	1,942
Dietitians	20	33	29.39	34	34	-4	+5	+0	+1	+15	4.03%	38
Occupational Therapists	117	146	153.1	160	159	+8	+6	-1	+13	+42	9.24%	179
Orthoptists	2	4	2.7	2	2	-1	-1	+0	-2	+0	-49.87%	2
Physiotherapists	89	109	122.13	129	131	+14	+9	+2	+22	+42	20.55%	155
Podiatrists & Chiropodists	7	20	23.15	24	23	+4	-0	-1	+3	+16	17.88%	26
Speech & Language Therapists	105	111	117.37	125	126	+7	+9	+1	+15	+21	13.91%	141
Therapy Professions	338	421	448	473	475	+27	+27	+2	+54	+137	12.81%	541
Health Science/ Diagnostics	6	10	8	10	10	-2	+2	+0	+0	+3	0.62%	10
Social Care	245	300	338	338	342	+38	+4	+4	+42	+97	14.04%	403
Social Workers	84	102	108	119	120	+5	+12	+0	+17	+36	16.74%	134
Psychologists	73	88	92	92	92	+4	+0	-0	+4	+19	4.72%	104
Pharmacy	5	6	7	10	9	+1	+2	-1	+3	+5	60.22%	13
H&SC, Other	59	77	86	90	88	+9	+2	-2	+11	+29	14.35%	101
Health & Social Care Professionals	811	1,004	1,086	1,133	1,136	+82	+50	+3	+132	+325	13.14%	1,306
Management (VIII & above)	56	70	67	69	68	-4	+1	-1	-2	+12	-3.15%	70
Administrative/ Supervisory (V to VII)	134	235	273	288	290	+38	+17	+2	+54	+156	23.11%	302
Clerical (III & IV)	468	451	487	483	478	+36	-9	-5	+27	+10	5.95%	547
Management & Administrative	657	757	827	840	836	+70	+9	-4	+79	+179	10.44%	919
Support	158	140	132	136	133	-8	+1	-3	-7	-24	-4.81%	201
Maintenance/ Technical	68	79	79	80	80	-0	+2	+0	+1	+12	1.72%	82
General Support	226	219	211	216	214	-8	+3	-2	-5	-12	-2.45%	283
Health Care Assistants	1,367	1,412	1,469	1,521	1,540	+57	+71	+19	+128	+173	9.07%	1,785
Home Help	499	407	376	366	363	-31	-12	-2	-44	-136	-10.70%	486
Care, other	271	335	329	328	331	-6	+2	+3	-3	+61	-1.01%	389
Patient & Client Care	2,137	2,154	2,173	2,215	2,235	+20	+61	+20	+81	+97	3.77%	2,660



WTE Change by Staff Category

■ WTE change since DEC 2019 ■ WTE change since DEC 2022 ■ WTE change since DEC 2023 ■ WTE change since MAY 2023

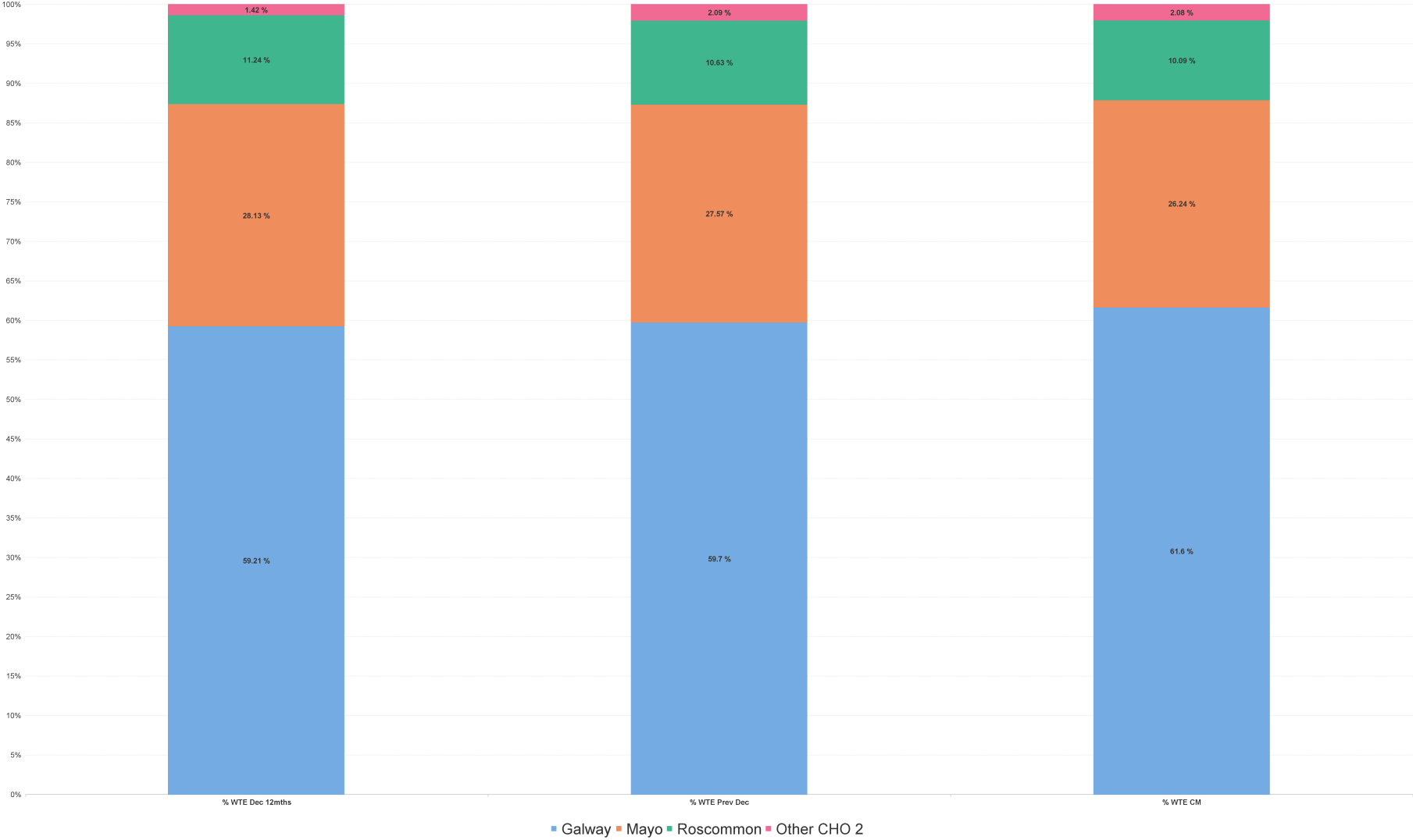


Employment Report by Hospital: MAY 2024

Hospital MAY 2024	WTE DEC 2019	WTE DEC 2022	WTE DEC 2023	WTE APR 2024	WTE MAY 2024	WTE Change 2023	WTE Change 2024	WTE Change APR 2024	WTE Change Dec 2022 to MAY 2024	WTE Change Dec 2019 to MAY 2024	% WTE Change Dec 2022 to MAY 2024	No. MAY 2024
Overall	5,545	5,972	6,167	6,393	6,385	+195	+218	-7	+413	+841	6.92%	7,398
Galway	2,856	3,536	3,682	3,929	3,933	+146	+251	+4	+397	+1,077	11.23%	4,616
Mayo	1,629	1,680	1,700	1,686	1,675	+21	-25	-11	-4	+46	-0.26%	1,919
Roscommon	1,013	671	656	646	644	-15	-12	-2	-27	-369	-4.03%	721
Other CHO 2	46	85	129	132	133	+44	+4	+0	+48	+86	56.41%	142



% Total by Hospital



Employment Report by HSE/S38: MAY 2024

Administration MAY 2024	WTE DEC 2019	WTE DEC 2022	WTE DEC 2023	WTE APR 2024	WTE MAY 2024	WTE Change 2023	WTE Change 2024	WTE Change APR 2024	WTE Change Dec 2022 to MAY 2024	WTE Change Dec 2019 to MAY 2024	% WTE Change Dec 2022 to MAY 2024	No. MAY 2024
Overall	5,545	5,972	6,167	6,393	6,385	+195	+218	-7	+413	+841	6.92%	7,398
Health Service Executive	4,256	4,596	4,704	4,710	4,691	+108	-13	-20	+95	+434	2.06%	5,287
Section 38 Voluntary Agencies	1,288	1,376	1,463	1,683	1,695	+87	+232	+12	+319	+406	23.18%	2,111



Employment Report by Administration: MAY 2024

Health Service Executive

MAY 2024	WTE DEC 2019	WTE DEC 2022	WTE DEC 2023	WTE APR 2024	WTE MAY 2024	WTE Change 2023	WTE Change 2024	WTE Change APR 2024	WTE Change Dec 2022 to MAY 2024	WTE Change Dec 2019 to MAY 2024	% WTE Change Dec 2022 to MAY 2024	No. MAY 2024
Total Health Service Executive	4,256	4,596	4,704	4,710	4,691	+108	-13	-20	+95	+434	2.06%	5,287
Consultants	40	41	49	49	48	+8	-1	-1	+7	+8	17.14%	54
Registrars	73	90	95	101	101	+6	+5	+0	+11	+28	12.41%	105
SHO/ Interns	36	42	39	38	38	-3	-1	-0	-4	+2	-10.23%	40
Medical/ Dental, other	59	57	55	59	58	-3	+3	-1	+0	-1	0.78%	76
Medical & Dental	208	230	238	246	244	+8	+6	-2	+14	+36	6.22%	275
Nurse/ Midwife Manager	241	266	280	283	278	+14	-2	-5	+12	+37	4.60%	293
Nurse/ Midwife Specialist & AN/MP	88	137	164	168	168	+27	+4	+0	+31	+80	22.61%	180
Staff Nurse/ Staff Midwife	778	789	782	783	783	-7	+1	-1	-6	+5	-0.80%	880
Public Health Nurse	192	187	190	192	183	+2	-7	-9	-5	-9	-2.48%	219
<i>Nursing/ Midwifery awaiting registration</i>	5	7	+15	2		+2	-15	-1	-7	-5	-7	
<i>Post-registration Nurse/ Midwife Student</i>	4	14	+11	12	12	+10	+1	-4	-2	+8	-2	12
<i>Pre-registration Nurse/ Midwife Intern</i>	0	4		22	21	+4	+21	-1	+17	+21	+17	44
Nursing/ Midwifery Student	9	25	26	36	33	+1	+7	-2	+8	+24	29.74%	56
Nursing/ Midwifery other	2	4	4	5	5	+0	+1	+0	+1	+3	25.00%	5
Nursing & Midwifery	1,310	1,408	1,445	1,467	1,449	+37	+4	-18	+41	+140	2.90%	1,633
<i>Dietitians</i>	20	33	+29	34	34	+13	+5	+3	+1	+15	+1	38
<i>Occupational Therapists</i>	107	135	+139	139	138	+28	-1	+1	+4	+31	+4	155
<i>Orthoptists</i>	2	4	+3	2	2	+2	-1	-2	-2	+0	-2	2
<i>Physiotherapists</i>	78	100	+113	116	117	+22	+4	+8	+17	+39	+17	134
<i>Podiatrists & Chiropractors</i>	7	20	+23	24	23	+13	-0	+1	+3	+16	+3	26
<i>Speech & Language Therapists</i>	90	96	+102	108	109	+6	+7	+11	+13	+19	+13	121
Therapy Professions	304	387	409	423	424	+22	+15	+1	+37	+120	9.50%	476
Health Science/ Diagnostics	6	10	8	10	10	-2	+2	+0	+0	+3	0.62%	10
Social Care	50	48	52	56	55	+4	+4	-1	+7	+6	15.36%	59
Social Workers	58	77	82	85	85	+5	+2	+0	+8	+26	9.79%	92
Psychologists	59	74	77	78	78	+3	+1	-0	+5	+19	6.15%	87
Pharmacy	5	6	7	7	6	+1	-1	-1	+0	+2	6.90%	8
H&SC, Other	43	66	72	74	73	+7	+0	-1	+7	+29	10.71%	80
Health & Social Care Professionals	525	667	708	732	731	+41	+23	-2	+64	+205	9.55%	812
Management (VIII & above)	43	58	53	52	52	-4	-2	-1	-6	+9	-10.51%	53
Administrative/ Supervisory (V to VII)	99	184	218	222	225	+34	+7	+3	+41	+127	22.15%	235
Clerical (III & IV)	431	410	440	422	419	+31	-22	-4	+9	-12	2.20%	466
Management & Administrative	573	652	712	697	696	+60	-16	-1	+44	+123	6.73%	754
Support	113	94	87	81	81	-7	-6	-1	-14	-32	-14.30%	109
Maintenance/ Technical	63	75	73	71	72	-2	-2	+0	-3	+9	-4.23%	73
General Support	176	169	160	153	152	-9	-8	-0	-17	-24	-9.85%	182
Health Care Assistants	821	846	863	859	860	+17	-3	+1	+14	+39	1.71%	928
Home Help	499	407	376	366	363	-31	-12	-2	-44	-136	-10.70%	486
Care, other	144	218	203	191	195	-15	-7	+5	-22	+51	-10.24%	217
Patient & Client Care	1,465	1,470	1,441	1,416	1,419	-29	-22	+3	-51	-46	-3.50%	1,631



Section 38 Voluntary Agencies

MAY 2024	WTE DEC 2019	WTE DEC 2022	WTE DEC 2023	WTE APR 2024	WTE MAY 2024	WTE Change 2023	WTE Change 2024	WTE Change APR 2024	WTE Change Dec 2022 to MAY 2024	WTE Change Dec 2019 to MAY 2024	% WTE Change Dec 2022 to MAY 2024	No. MAY 2024
Total Section 38 Voluntary Agencies	1,288	1,376	1,463	1,683	1,695	+87	232	+12	+319	+406	23.18%	2,111
Consultants	2	2	2	2	2	+0	+0	+0	+0	+0	0.00%	3
Registrars	2	1	1	7	6	+0	+5	-1	+5	+4	532.90%	9
SHO/ Interns		1	1	1	1	+0	+0	+0	+0	+1	0.00%	1
Medical & Dental	4	4	4	10	10	+0	+5	-1	+5	+5	120.57%	13
Nurse/ Midwife Manager	67	65	56	73	73	-9	+17	+1	+9	+6	13.31%	82
Nurse/ Midwife Specialist & AN/MP	5	4	4	21	21	-1	+17	+0	+16	+16	368.77%	25
Staff Nurse/ Staff Midwife	120	127	123	173	168	-4	+45	-6	+41	+48	32.62%	202
Nursing & Midwifery	192	196	183	267	262	-13	+80	-4	+66	+70	33.88%	309
Occupational Therapists	9	11	+14	21	20	+1	+7	+11	+10	+11	+10	24
Physiotherapists	11	9	+9	13	14	-2	+5	+4	+5	+3	+5	21
Speech & Language Therapists	14	15	+15	17	17	+0	+1	+2	+2	+2	+2	20
Therapy Professions	35	34	39	51	51	+4	+13	+1	+17	+17	50.44%	65
Social Care	195	252	286	282	287	+34	+1	+4	+35	+91	13.79%	344
Social Workers	25	25	25	35	35	+0	+9	+0	+10	+9	37.96%	42
Psychologists	14	14	15	14	14	+1	-1	+0	-0	+0	-2.56%	17
Pharmacy				3	3		+3	+0	+3	+3	-100.00%	5
H&SC, Other	16	11	13	16	15	+2	+2	-1	+4	-1	35.42%	21
Health & Social Care Professionals	285	337	378	400	405	+41	+27	+5	+68	+120	20.26%	494
Management (VIII & above)	13	13	14	17	17	+1	+3	+0	+4	+4	29.78%	17
Administrative/ Supervisory (V to VII)	35	51	55	66	64	+4	+10	-1	+14	+30	26.61%	67
Clerical (III & IV)	37	42	47	61	59	+5	+13	-1	+18	+22	42.98%	81
Management & Administrative	85	105	115	143	140	+10	+25	-3	+35	+56	33.46%	165
Support	45	46	45	54	52	-0	+7	-2	+7	+8	14.80%	92
Maintenance/ Technical	5	4	5	9	9	+1	+3	+0	+5	+4	103.69%	9
General Support	50	50	51	63	61	+1	+11	-2	+11	+12	22.54%	101
Health Care Assistants	546	566	606	661	680	+39	+74	+19	+114	+134	20.07%	857
Care, other	126	117	126	138	136	+9	+10	-1	+19	+10	16.15%	172
Patient & Client Care	672	683	732	799	816	+49	+84	+17	+133	+144	19.39%	1,029



Employment Report by Hospital : MAY 2024

Galway	WTE DEC 2019	WTE DEC 2022	WTE DEC 2023	WTE APR 2024	WTE MAY 2024	WTE Change 2023	WTE Change 2024	WTE Change APR 2024	WTE Change Dec 2022 to MAY 2024	WTE Change Dec 2019 to MAY 2024	% WTE Change Dec 2022 to MAY 2024	No. MAY 2024
Total Galway	2,856	3,536	3,682	3,929	3,933	+146	+251	+4	+397	+1,077	11.23%	4,616
Consultants	28	29	32	33	31	+4	-1	-1	+3	+3	9.55%	37
Registrars	57	65	69	79	78	+3	+10	-0	+13	+21	20.05%	85
SHO/ Interns	22	31	25	25	24	-6	-1	-0	-6	+2	-20.26%	25
Medical/ Dental, other	28	26	28	31	30	+2	+2	-1	+4	+2	16.11%	40
Medical & Dental	135	150	153	167	164	+3	+10	-3	+14	+29	9.17%	187
Nurse/ Midwife Manager	173	198	199	219	215	+2	+16	-4	+17	+42	8.71%	231
Nurse/ Midwife Specialist & AN/MP	50	88	97	117	117	+10	+20	+1	+30	+67	33.95%	127
Staff Nurse/ Staff Midwife	420	463	453	510	505	-10	+53	-4	+43	+85	9.25%	582
Public Health Nurse	111	102	104	108	102	+3	-2	-5	+1	-8	0.68%	127
<i>Nursing/ Midwifery awaiting registration</i>	3	6	14.32	2		+8	-14	-2	-6	-3	-100.00%	
<i>Post-registration Nurse/ Midwife Student</i>	4	8	6	6	6	-2	+0	+0	-2	+2	-26.65%	6
<i>Pre-registration Nurse/ Midwife Intern</i>		1		10	10	-1	+10	-0	+9	+10	977.53%	20
Nursing/ Midwifery Student	7	15	20	18	16	+5	-5	-2	+1	+9	3.45%	26
Nursing/ Midwifery other	1	3	2	3	3	-1	+1	+0	+0	+2	0.00%	3
Nursing & Midwifery	762	868	876	974	959	+8	+83	-15	+91	+197	10.48%	1,096
<i>Dietitians</i>	6	18	18.95	22	21	+1	+2	-1	+3	+15	19.31%	24
<i>Occupational Therapists</i>	66	84	86.32	93	95	+2	+9	+2	+11	+29	12.67%	109
<i>Orthoptists</i>	1	2	0.72			-1	-1		-2	-1	-100.00%	
<i>Physiotherapists</i>	41	61	66.26	73	75	+5	+8	+1	+14	+34	22.71%	88
<i>Podiatrists & Chiropodists</i>	5	18	16.27	18	17	-1	+1	-1	-1	+12	-2.91%	20
<i>Speech & Language Therapists</i>	54	65	64.05	72	73	-1	+9	+0	+8	+18	12.28%	83
Therapy Professions	173	247	253	279	281	+5	+28	+2	+33	+108	13.50%	324
Health Science/ Diagnostics	4	4	2	4	4	-2	+2	+0	+0	+0	0.00%	4
Social Care	127	266	299	296	301	+33	+2	+5	+35	+174	13.26%	359
Social Workers	53	74	71	80	80	-4	+9	-0	+6	+27	7.72%	91
Psychologists	46	58	61	62	62	+3	+1	+1	+5	+16	8.07%	70
Pharmacy	3	3	4	7	6	+1	+2	-1	+3	+3	110.50%	8
H&SC, Other	46	54	54	55	54	-0	+0	-1	-0	+8	-0.19%	62
Health & Social Care Professionals	452	706	743	783	788	+38	+44	+5	+82	+336	11.62%	918
Management (VIII & above)	28	36	36	39	39	-0	+4	+1	+3	+11	9.73%	40
Administrative/ Supervisory (V to VII)	62	120	137	149	149	+17	+13	+0	+29	+87	24.37%	157
Clerical (III & IV)	241	242	266	272	268	+24	+3	-4	+26	+27	10.88%	312
Management & Administrative	331	398	438	460	457	+40	+19	-3	+59	+126	14.85%	509
Support	103	102	94	99	98	-8	+4	-2	-4	-6	-3.87%	154
Maintenance/ Technical	30	34	36	39	40	+2	+4	+0	+5	+10	16.08%	40
General Support	133	136	130	138	137	-6	+7	-1	+2	+4	1.15%	194
Health Care Assistants	756	914	970	1,031	1,050	+56	+80	+20	+136	+294	14.87%	1,250
Home Help	170	146	142	141	141	-4	-1	+0	-5	-29	-3.30%	179
Care, other	117	219	229	235	238	+10	+9	+2	+19	+121	8.49%	283
Patient & Client Care	1,042	1,279	1,342	1,407	1,429	+62	+87	+22	+150	+386	11.71%	1,712



Mayo	WTE DEC 2019	WTE DEC 2022	WTE DEC 2023	WTE APR 2024	WTE MAY 2024	WTE Change 2023	WTE Change 2024	WTE Change APR 2024	WTE Change Dec 2022 to MAY 2024	WTE Change Dec 2019 to MAY 2024	% WTE Change Dec 2022 to MAY 2024	No. MAY 2024
Total Mayo	1,629	1,680	1,700	1,686	1,675	+21	-25	-11	-4	+46	-0.26%	1,919
Consultants	10	12	14	14	14	+2	-0	+0	+2	+4	18.64%	15
Registrars	16	21	23	24	24	+1	+1	-0	+2	+8	11.07%	24
SHO/ Interns	9	9	11	10	10	+2	-1	+0	+1	+1	9.93%	12
Medical/ Dental, other	23	24	21	22	22	-3	+1	-0	-2	-2	-9.76%	29
Medical & Dental	58	66	69	70	70	+2	+1	-0	+3	+11	4.74%	80
Nurse/ Midwife Manager	83	86	90	91	91	+5	+1	+0	+6	+9	6.40%	96
Nurse/ Midwife Specialist & AN/MP	32	38	51	52	53	+13	+2	+1	+14	+21	37.38%	56
Staff Nurse/ Staff Midwife	335	338	340	334	331	+2	-9	-3	-7	-5	-2.02%	377
Public Health Nurse	54	58	60	57	55	+1	-5	-2	-4	+1	-6.09%	61
<i>Nursing/ Midwifery awaiting registration</i>		1	0.93			-0	-1		-1		-100.00%	
<i>Post-registration Nurse/ Midwife Student</i>		6	5	6	6	-1	+1	+0	+0	+6	8.70%	6
<i>Pre-registration Nurse/ Midwife Intern</i>	0	1		10	9	-1	+9	-0	+8	+9	960.47%	19
Nursing/ Midwifery Student	0	7	6	16	15	-1	+9	-0	+8	+15	104.88%	25
Nursing/ Midwifery other		1	2	2	2	+1	+0	+0	+1	+2	100.00%	2
Nursing & Midwifery	504	529	549	551	547	+21	-2	-4	+18	+43	3.44%	617
<i>Dietitians</i>	14	14	7.64	9	9	-7	+2	+0	-5	-5	-33.80%	10
<i>Occupational Therapists</i>	35	41	49.22	49	48	+8	-1	-1	+7	+13	15.88%	53
<i>Orthoptists</i>		1	1	1	1	+0	+0	+0	+0	+1	0.00%	1
<i>Physiotherapists</i>	31	37	41.85	43	43	+5	+1	+1	+6	+12	15.88%	53
<i>Podiatrists & Chiropodists</i>	1	1	4.88	4	4	+4	-1	+0	+3	+3	300.00%	4
<i>Speech & Language Therapists</i>	30	32	36.98	37	37	+5	+0	+0	+5	+7	16.86%	41
Therapy Professions	111	127	142	143	143	+15	+1	-0	+16	+32	12.63%	162
Health Science/ Diagnostics	1	5	5	5	5	+0	+0	+0	+0	+3	1.27%	5
Social Care	35	34	38	42	41	+4	+3	-1	+7	+6	20.11%	44
Social Workers	18	20	18	21	21	-2	+3	+0	+1	+3	5.31%	23
Psychologists	16	22	21	23	21	-1	-0	-1	-1	+5	-3.19%	23
Pharmacy	1	1	2	2	2	+1	+0	+0	+1	+1	93.60%	4
H&SC, Other	10	22	17	19	19	-5	+2	-1	-3	+9	-14.93%	20
Health & Social Care Professionals	193	231	244	255	252	+13	+8	-3	+21	+59	9.18%	281
Management (VIII & above)	10	15	12	11	9	-2	-3	-2	-5	-1	-36.31%	10
Administrative/ Supervisory (V to VII)	32	53	56	52	52	+3	-4	+1	-1	+21	-1.97%	54
Clerical (III & IV)	145	135	143	137	136	+8	-7	-1	+1	-9	0.50%	156
Management & Administrative	187	203	212	200	198	+8	-14	-2	-6	+11	-2.82%	220
Support	21	18	16	16	16	-1	+0	+0	-1	-4	-6.65%	22
Maintenance/ Technical	26	29	28	27	27	-1	-1	+0	-2	+2	-7.10%	28
General Support	46	47	45	44	44	-2	-1	+0	-3	-3	-6.93%	50
Health Care Assistants	366	362	368	362	362	+7	-6	-0	+1	-4	0.21%	396
Home Help	221	167	147	142	139	-20	-8	-4	-29	-82	-17.09%	203
Care, other	54	75	67	63	65	-8	-2	+2	-10	+11	-13.42%	72
Patient & Client Care	641	604	582	568	566	-22	-16	-2	-38	-75	-6.27%	671

Roscommon	WTE DEC 2019	WTE DEC 2022	WTE DEC 2023	WTE APR 2024	WTE MAY 2024	WTE Change 2023	WTE Change 2024	WTE Change APR 2024	WTE Change Dec 2022 to MAY 2024	WTE Change Dec 2019 to MAY 2024	% WTE Change Dec 2022 to MAY 2024	No. MAY 2024
Total Roscommon	1,013	671	656	646	644	-15	-12	-2	-27	-369	-4.03%	721
Consultants	4	3	5	5	5	+2	+0	+0	+2	+1	71.23%	5
Registrars	2	4	5	5	5	+1	+0	+0	+1	+3	25.00%	5
SHO/ Interns	5	3	4	4	4	+1	-0	-0	+1	-1	32.88%	4
Medical/ Dental, other	8	8	6	6	6	-2	+0	+0	-1	-2	-17.03%	7
Medical & Dental	19	18	20	20	20	+3	+0	-0	+3	+1	15.38%	21



Roscommon	WTE DEC 2019	WTE DEC 2022	WTE DEC 2023	WTE APR 2024	WTE MAY 2024	WTE Change 2023	WTE Change 2024	WTE Change APR 2024	WTE Change Dec 2022 to MAY 2024	WTE Change Dec 2019 to MAY 2024	% WTE Change Dec 2022 to MAY 2024	No. MAY 2024
Total Roscommon	1,013	671	656	646	644	-15	-12	-2	-27	-369	-4.03%	721
Nurse/ Midwife Manager	53	41	39	39	39	-3	-0	-1	-3	-14	-6.75%	41
Nurse/ Midwife Specialist & AN/MP	11	14	16	16	16	+3	-0	-0	+2	+5	16.70%	18
Staff Nurse/ Staff Midwife	142	115	112	114	114	-3	+2	+1	-1	-28	-0.87%	123
Public Health Nurse	27	27	26	27	25	-2	-0	-2	-2	-2	-6.57%	31
<i>Nursing/ Midwifery awaiting registration</i>	2									-2	-100.00%	
<i>Post-registration Nurse/ Midwife Student</i>		1				-1			-1		-100.00%	
<i>Pre-registration Nurse/ Midwife Intern</i>		2		2	2	-2	+2	+0	+0	+2	2.61%	5
Nursing/ Midwifery Student	2	3		2	2	-3	+2	+0	-1	+1	-22.37%	5
Nursing/ Midwifery other	1									-1	-100.00%	
Nursing & Midwifery	236	200	193	198	196	-8	+4	-2	-4	-39	-1.99%	218
<i>Dietitians</i>		1	2.8	3	4	+2	+1	+1	+3	+4	275.00%	4
<i>Occupational Therapists</i>	16	20	17.56	17	16	-2	-2	-1	-4	+1	-19.15%	17
<i>Orthoptists</i>	1	1	0.98	1	1	-0	+0	+0	+0	+0	0.00%	1
<i>Physiotherapists</i>	17	10	14.02	13	13	+4	-1	+0	+3	-4	24.64%	14
<i>Podiatrists & Chiropodists</i>	1	1	2	2	2	+1	+0	+0	+1	+1	100.00%	2
<i>Speech & Language Therapists</i>	21	14	16.34	15	16	+2	-0	+1	+2	-4	14.76%	17
Therapy Professions	54	47	54	51	52	+6	-2	+1	+5	-2	9.71%	55
Health Science/ Diagnostics	1	1	1	1	1	+0	+0	+0	+0	+0	0.00%	1
Social Care	83									-83	-100.00%	
Social Workers	13	8	6	6	6	-1	-0	+0	-2	-6	-20.95%	7
Psychologists	11	8	10	8	9	+1	-1	+1	+0	-2	2.36%	11
Pharmacy	1									-1	-100.00%	
H&SC, Other	3	1	3	2	2	+2	-1	+0	+1	-1	100.00%	2
Health & Social Care Professionals	166	66	73	68	70	+7	-3	+2	+4	-96	6.27%	76
Management (VIII & above)	4	3	3	3	3	+0	-0	-0	-0	-1	-2.00%	3
Administrative/ Supervisory (V to VII)	22	19	26	26	27	+7	+1	+0	+8	+5	39.73%	27
Clerical (III & IV)	68	58	55	55	55	-3	+0	-0	-3	-12	-5.10%	60
Management & Administrative	93	80	84	85	85	+4	+1	-0	+5	-8	5.62%	90
Support	34	21	22	20	19	+1	-3	-1	-2	-14	-7.85%	25
Maintenance/ Technical	12	15	15	13	13	-1	-1	+0	-2	+1	-13.21%	14
General Support	46	36	36	34	33	+0	-4	-1	-4	-13	-10.13%	39
Health Care Assistants	245	136	130	127	127	-6	-3	-0	-9	-117	-6.38%	139
Home Help	109	94	87	83	84	-7	-3	+1	-10	-25	-10.82%	104
Care, other	100	41	33	30	29	-8	-4	-1	-12	-71	-29.18%	34
Patient & Client Care	454	271	250	240	240	-21	-10	-0	-31	-214	-11.36%	277

Other CHO 2	WTE DEC 2019	WTE DEC 2022	WTE DEC 2023	WTE APR 2024	WTE MAY 2024	WTE Change 2023	WTE Change 2024	WTE Change APR 2024	WTE Change Dec 2022 to MAY 2024	WTE Change Dec 2019 to MAY 2024	% WTE Change Dec 2022 to MAY 2024	No. MAY 2024
Total Other CHO 2	46	85	129	132	133	+44	+4	+0	+48	+86	56.41%	142
Nurse/ Midwife Manager		5	7	6	6	+2	-1	-0	+1	+6	16.79%	7
Nurse/ Midwife Specialist & AN/MP		2	3	4	3	+1	+0	-1	+1	+3	55.33%	4
Nursing & Midwifery		7	10	10	9	+3	-1	-1	+2	+9	26.98%	11
Social Workers			12	12	12	+12	-0	+0	+12	+12	-100.00%	13
Pharmacy		2	1	1	1	-1	+0	+0	-1	+1	-43.18%	1
H&SC, Other			12	14	13	+12	+1	-0	+13	+13	-100.00%	17
Health & Social Care Professionals		2	26	27	26	+24	+1	-0	+25	+26	1,400.57%	31
Management (VIII & above)	14	17	16	16	17	-1	+1	+1	-0	+3	-1.73%	17
Administrative/ Supervisory (V to VII)	18	43	54	61	61	+11	+7	+1	+19	+43	43.44%	64
Clerical (III & IV)	14	16	24	19	19	+8	-5	+0	+3	+4	17.87%	19



Other CHO 2	WTE DEC 2019	WTE DEC 2022	WTE DEC 2023	WTE APR 2024	WTE MAY 2024	WTE Change 2023	WTE Change 2024	WTE Change APR 2024	WTE Change Dec 2022 to MAY 2024	WTE Change Dec 2019 to MAY 2024	% WTE Change Dec 2022 to MAY 2024	No. MAY 2024
Total Other CHO 2	46	85	129	132	133	+44	+4	+0	+48	+86	56.41%	142
Management & Administrative	46	76	93	95	97	+18	+3	+1	+21	+50	28.01%	100



Employment Report by Grade Group: MAY 2024

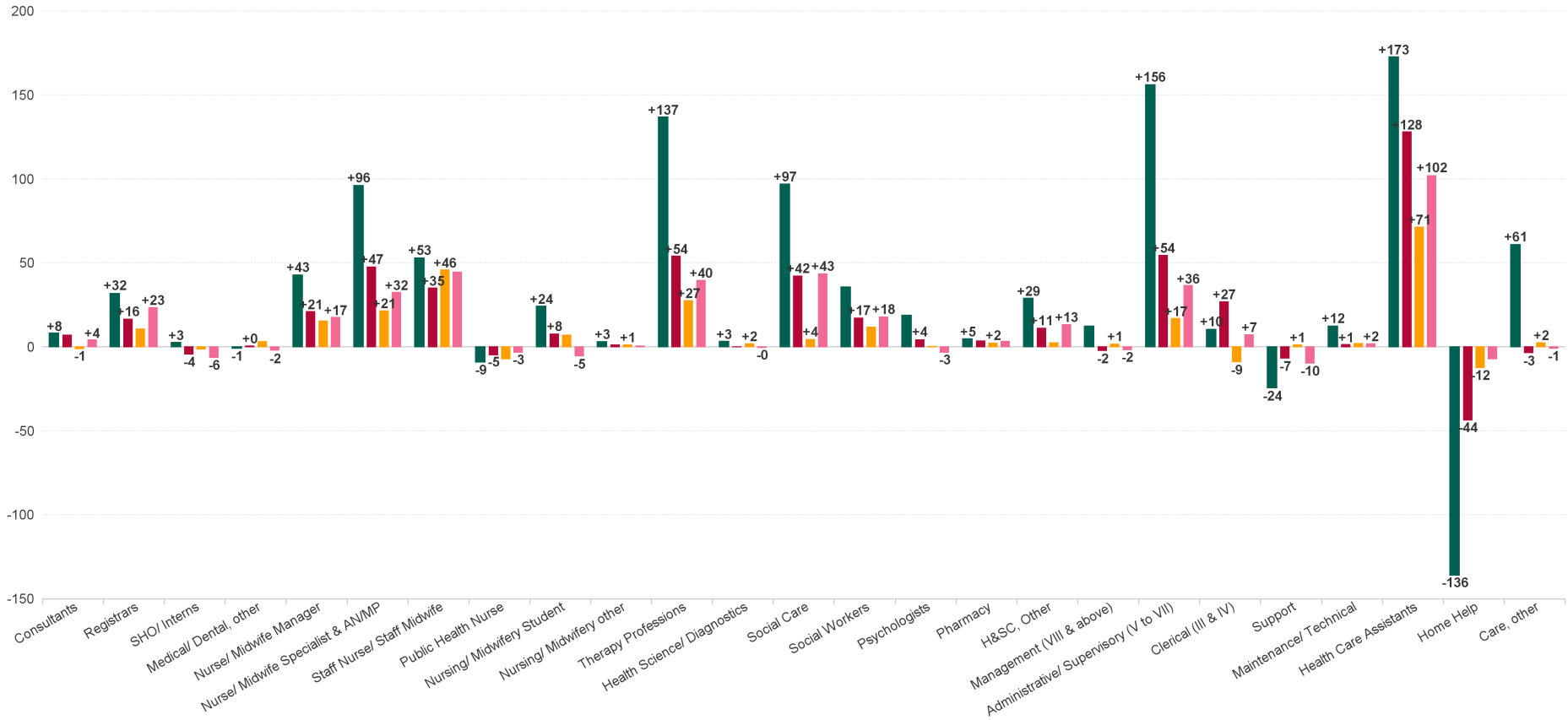
Employment by Grade Group MAY 2024	WTE DEC 2019	WTE DEC 2022	WTE DEC 2023	WTE APR 2024	WTE MAY 2024	WTE Change 2023	WTE Change 2024	WTE Change APR 2024	WTE Change Dec 2022 to MAY 2024	WTE Change Dec 2019 to MAY 2024	% WTE Change Dec 2022 to MAY 2024	No. MAY 2024
Overall	5,545	5,972	6,167	6,393	6,385	+195	+218	-7	+413	+841	6.92%	7,398
Consultant Medicine	1	3	5	5	5	+2	+0	+0	+2	+4	66.67%	6
Consultant Paediatrics	1	1	1	1	1	+0	+0	+0	+0	+0	0.00%	1
Consultant Psychiatry	40	39	45	46	44	+6	-1	-1	+5	+4	12.74%	50
Consultant Surgery	0									-0	-100.00%	
Consultants	42	43	51	52	50	+8	-1	-1	+7	+8	16.18%	57
Registrar	58	75	80	87	86	+5	+7	-1	+12	+28	15.75%	90
Senior Registrar	17	16	17	20	19	+1	+2	-1	+3	+2	16.98%	22
Specialist Registrar				1	2		+2	+1	+2	+2	-100.00%	2
Registrars	75	91	96	108	107	+6	+11	-1	+16	+32	18.15%	114
Senior House Officer	36	43	40	39	39	-3	-1	-0	-4	+3	-9.99%	41
SHO/ Interns	36	43	40	39	39	-3	-1	-0	-4	+3	-9.99%	41
Dentists	21	23	23	23	23	+0	-0	-0	-0	+2	-0.86%	27
Other Medical	38	34	31	35	35	-3	+3	-1	+1	-3	1.90%	49
Medical/ Dental, other	59	57	55	59	58	-3	+3	-1	+0	-1	0.78%	76
Medical & Dental	212	234		257	254	+8	+11	-3	+20	+42	8.38%	288
Clinical Nurse/ Midwife Manager 1	47	51	50	56	57	-1	+7	+1	+6	+10	11.76%	64
Clinical Nurse/ Midwife Manager 2	169	165	180	188	184	+15	+3	-4	+18	+14	10.96%	196
Clinical Nurse/ Midwife Manager 3	25	42	33	36	36	-9	+3	+0	-6	+11	-15.06%	37
Director Nursing/Midwifery, Assistant	45	47	50	52	49	+3	-1	-3	+2	+5	4.52%	52
Director of Nursing/Midwifery	23	25	23	25	26	-2	+3	+1	+1	+2	3.76%	26
Nurse/ Midwife Manager	309	331	336	356	351	+6	+15	-5	+21	+43	6.31%	375
Advanced Nurse/ Midwife Practitioner	4	16	18	16	17	+2	-0	+1	+1	+13	9.01%	19
Adv. Nurse/ Midwife, Candidate	5	6	6	7	8	+0	+2	+1	+2	+3	36.52%	8
Clinical Nurse/ Midwife Specialist	84	119	144	164	163	+24	+20	-1	+44	+80	36.66%	178
Nurse/ Midwife Specialist & AN/MP	93	141	167	188	189	+26	+21	+0	+47	+96	33.53%	205
Staff Midwives											-100.00%	
Staff Nurse [Intellectual Disability]	90	124	121	132	130	-3	+8	-2	+6	+40	4.46%	158
Staff Nurse [Psychiatric]	371	366	336	343	349	-30	+13	+6	-17	-23	-4.73%	378
Staff Nurses [General/ Children's]	437	426	448	482	472	+22	+25	-10	+47	+36	10.98%	546
Staff Nurse/ Staff Midwife	898	916	905	957	951	-11	+46	-6	+35	+53	3.82%	1,082
Public Health Nurse	192	187	190	192	183	+2	-7	-9	-5	-9	-2.48%	219
Public Health Nurse	192	187	190	192	183	+2	-7	-9	-5	-9	-2.48%	219
Nursing/ Midwifery awaiting registration	5	7	15	2		+8	-15	-2	-7	-5	-100.00%	
Post-registration Nurse/ Midwife Student	4	14	11	12	12	-3	+1	+0	-2	+8	-16.90%	12
Pre-registration Nurse/ Midwife Intern	0	4		22	21	-4	+21	-0	+17	+21	420.25%	44
Nursing/ Midwifery Student	9	25	26	36	33	+1	+7	-2	+8	+24	29.74%	56
Nursing Education/Clinical	2	4	4	5	5	+0	+1	+0	+1	+3	25.00%	5
Nursing/ Midwifery other	2	4	4	5	5	+0	+1	+0	+1	+3	25.00%	5
Nursing & Midwifery	1,502	1,604		1,733	1,711	+24	+83	-22	+107	+210	6.68%	1,942
Dietitians	20	33	29	34	34	-4	+5	+0	+1	+15	4.03%	38
Occupational Therapists	117	146	153	160	159	+8	+6	-1	+13	+42	9.24%	179
Orthoptists	2	4	3	2	2	-1	-1	+0	-2	+0	-49.87%	2
Physiotherapists	89	109	122	129	131	+14	+9	+2	+22	+42	20.55%	155
Podiatrists & Chiropodists	7	20	23	24	23	+4	-0	-1	+3	+16	17.88%	26
Speech & Language Therapists	105	111	117	125	126	+7	+9	+1	+15	+21	13.91%	141
Therapy Professions	338	421	448	473	475	+27	+27	+2	+54	+137	12.81%	541
Audiology	5	8	7	9	9	-1	+2	+0	+1	+4	12.41%	9
Clinical Engineering	1	1				-1			-1	-1	-100.00%	
Radiographers	1	1	1	1	1	+0	+0	+0	+0	+0	9.59%	1
Health Science/ Diagnostics	6	10	8	10	10	-2	+2	+0	+0	+3	0.62%	10
Social Care	245	300	338	338	342	+38	+4	+4	+42	+97	14.04%	403
Social Care	245	300	338	338	342	+38	+4	+4	+42	+97	14.04%	403
Social Workers	84	102	108	119	120	+5	+12	+0	+17	+36	16.74%	134
Social Workers	84	102	108	119	120	+5	+12	+0	+17	+36	16.74%	134



Employment by Grade Group MAY 2024	WTE DEC 2019	WTE DEC 2022	WTE DEC 2023	WTE APR 2024	WTE MAY 2024	WTE Change 2023	WTE Change 2024	WTE Change APR 2024	WTE Change Dec 2022 to MAY 2024	WTE Change Dec 2019 to MAY 2024	% WTE Change Dec 2022 to MAY 2024	No. MAY 2024
Overall	5,545	5,972	6,167	6,393	6,385	+195	+218	-7	+413	+841	6.92%	7,398
Psychologists	73	88	92	92	92	+4	+0	-0	+4	+19	4.72%	104
Psychologists	73	88	92	92	92	+4	+0	-0	+4	+19	4.72%	104
Pharmacists	4	5	6	9	8	+1	+2	-1	+3	+4	59.94%	11
Pharmacy Technicians	1	1	1	1	1	-0	+1	+0	+0	+1	62.03%	2
Pharmacy	5	6	7	10	9	+1	+2	-1	+3	+5	60.22%	13
Counsellor Therapists	11	22	26	28	27	+3	+1	-1	+4	+16	19.09%	31
Dental Hygienists	4	5	5	5	5	-0	+0	+0	-0	+0	-0.41%	6
Other Health & Social Care	40	37	47	48	48	+9	+1	-0	+11	+8	28.17%	54
Play Therapists/ Specialists	4	2	7	9	8	+6	+1	-1	+7	+5	460.00%	10
Vaccinators		11	1			-10	-1		-11		-100.00%	
H&SC, Other	59	77	86	90	88	+9	+2	-2	+11	+29	14.35%	101
Health & Social Care Professionals	811	1,004		1,133	1,136	+82	+50	+3	+132	+325	13.14%	1,306
Executive Management	10	13	13	14	14	+0	+1	-0	+1	+4	6.55%	14
Senior Management (VIII & GM)	46	57	54	55	54	-4	+1	-0	-3	+9	-5.35%	56
Management (VIII & above)	56	70	67	69	68	-4	+1	-1	-2	+12	-3.15%	70
Middle Management (V-VII)	133	235	273	288	290	+38	+17	+2	+54	+157	23.11%	302
Other Administrative	1									-1	-100.00%	
Administrative/ Supervisory (V to VII)	134	235	273	288	290	+38	+17	+2	+54	+156	23.11%	302
General Administrative (III & IV)	468	451	487	483	478	+36	-9	-5	+27	+10	5.95%	547
Clerical (III & IV)	468	451	487	483	478	+36	-9	-5	+27	+10	5.95%	547
Management & Administrative	657	757		840	836	+70	+9	-4	+79	+179	10.44%	919
Catering	40	33	29	33	33	-4	+4	-0	+0	-7	0.15%	35
Household Services	63	58	57	55	55	-1	-2	-0	-3	-8	-4.54%	93
Other Support	39	38	37	41	39	-1	+1	-2	+1	-1	2.20%	66
Portering	16	12	9	7	7	-3	-2	+0	-5	-9	-41.67%	7
Support	158	140	132	136	133	-8	+1	-3	-7	-24	-4.81%	201
Maintenance	68	78	77	76	76	-1	-0	+0	-2	+8	-2.05%	78
Technical Services		1	2	4	4	+1	+2	+0	+3	+4	295.90%	4
Maintenance/ Technical	68	79	79	80	80	-0	+2	+0	+1	+12	1.72%	82
General Support	226	219		216	214	-8	+3	-2	-5	-12	-2.45%	283
Attendant/ Aide	437	237	187	191	190	-50	+3	-1	-47	-247	-19.76%	212
Health Care Assistant/ Care Assistant	916	1,152	1,251	1,297	1,318	+99	+67	+20	+166	+402	14.43%	1,540
Health & Social Care Assistants	14	23	31	32	32	+7	+1	-0	+9	+18	36.85%	33
Health Care Assistants	1,367	1,412	1,469	1,521	1,540	+57	+71	+19	+128	+173	9.07%	1,785
Home Helps	499	407	376	366	363	-31	-12	-2	-44	-136	-10.70%	486
Home Help	499	407	376	366	363	-31	-12	-2	-44	-136	-10.70%	486
Health Promotion		20	19	20	21	-2	+2	+0	+0	+21	1.03%	22
Home Care Services	29	47	45	36	39	-2	-6	+4	-8	+10	-16.68%	42
Other Care Grades	63	102	101	101	102	-1	+1	+1	+0	+40	0.27%	114
Pastoral Care	10	8	6	8	8	-2	+2	-0	+1	-2	8.10%	10
Workshop Services	169	158	159	163	161	+1	+2	-2	+3	-7	2.13%	201
Care, other	271	335	329	328	331	-6	+2	+3	-3	+61	-1.01%	389
Patient & Client Care	2,137	2,154		2,215	2,235	+20	+61	+20	+81	+97	3.77%	2,660

WTE Change by Staff Group

■ WTE change since DEC 2019
 ■ WTE change since DEC 2022
 ■ WTE change since DEC 2023
 ■ WTE change since MAY 2023



Employment Report by WTE, Headcount, Gender, Full-Time / Part-Time etc. MAY 2024

Demographic Grade Group MAY 2024	WTE MAY 2024	No. MAY 2024	WTE : No	Number Male %	Number Female %	Male WTE : No.	Female WTE : No	Perm Count %	Perm Count Male %	Perm Count Female %	Fulltime Count %	Part time Count %	FT Count Male %	FT Count Female %
Total	6,385	7,398	1:0.9	19.60%	80.40%	1:0.9	1:0.9	89.13%	16.38%	72.75%	64.86%	35.14%	76.07%	62.12%
Consultant Psychiatry	44.33	50	1:0.9	42.00%	58.00%	1:0.9	1:0.9	64.00%	28.00%	36.00%	78.00%	22.00%	85.71%	72.41%
Other Medical	34.84	49	1:0.7	36.73%	63.27%	1:0.6	1:0.8	81.63%	28.57%	53.06%	48.98%	51.02%	44.44%	51.61%
Registrar	86.38	90	1:1	42.22%	57.78%	1:1	1:0.9	3.33%	1.11%	2.22%	95.56%	4.44%	100.00%	92.31%
Senior House Officer	38.55	41	1:0.9	41.46%	58.54%	1:1	1:0.9	2.44%		2.44%	95.12%	4.88%	100.00%	91.67%
Senior Registrar	18.62	22	1:0.8	40.91%	59.09%	1:1	1:0.7	22.73%	4.55%	18.18%	81.82%	18.18%	100.00%	69.23%
Specialist Registrar	1.98	2	1:1	50.00%	50.00%	1:1	1:1				100.00%		100.00%	100.00%
Consultant Medicine	5	6	1:0.8		100.00%	1:	1:0.8	83.33%		83.33%	50.00%	50.00%		50.00%
Dentists	22.97	27	1:0.9	29.63%	70.37%	1:1	1:0.8	92.59%	29.63%	62.96%	66.67%	33.33%	87.50%	57.89%
Consultant Paediatrics	1	1	1:1		100.00%	1:	1:1	100.00%		100.00%	100.00%			100.00%
Medical & Dental	254	288	1:0.9	38.89%	61.11%	1:0.9	1:0.9	38.89%	13.19%	25.69%	79.86%	20.14%	87.50%	75.00%
Staff Nurse [Intellectual Disability]	129.63	158	1:0.8	8.23%	91.77%	1:0.8	1:0.8	91.14%	7.59%	83.54%	52.53%	47.47%	76.92%	50.34%
Staff Nurse [Psychiatric]	348.6	378	1:0.9	21.96%	78.04%	1:0.9	1:0.9	94.18%	18.25%	75.93%	85.19%	14.81%	81.93%	86.10%
Staff Nurses [General/ Children's]	472.3	546	1:0.9	6.96%	93.04%	1:0.9	1:0.9	96.52%	6.96%	89.56%	63.00%	37.00%	89.47%	61.02%
Clinical Nurse/ Midwife Manager 2	183.61	196	1:0.9	30.61%	69.39%	1:1	1:0.9	98.98%	30.61%	68.37%	92.35%	7.65%	100.00%	88.97%
Clinical Nurse/ Midwife Manager 3	35.77	37	1:1	24.32%	75.68%	1:1	1:1	91.89%	24.32%	67.57%	91.89%	8.11%	100.00%	89.29%
Advanced Nurse/ Midwife Practitioner	17.42	19	1:0.9	26.32%	73.68%	1:1	1:0.9	100.00%	26.32%	73.68%	94.74%	5.26%	80.00%	100.00%
Clinical Nurse/ Midwife Manager 1	57.1	64	1:0.9	6.25%	93.75%	1:1	1:0.9	96.88%	6.25%	90.63%	76.56%	23.44%	100.00%	75.00%
Clinical Nurse/ Midwife Specialist	163.3	178	1:0.9	8.43%	91.57%	1:1	1:0.9	99.44%	8.43%	91.01%	85.96%	14.04%	100.00%	84.66%
Director Nursing/Midwifery, Assistant	49.24	52	1:0.9	17.31%	82.69%	1:1	1:0.9	94.23%	17.31%	76.92%	84.62%	15.38%	100.00%	81.40%
Public Health Nurse	182.57	219	1:0.8		100.00%	1:	1:0.8	99.09%		99.09%	76.26%	23.74%		76.26%
Adv. Nurse/ Midwife, Candidate	8	8	1:1		100.00%	1:	1:1	100.00%		100.00%	100.00%			100.00%
Director of Nursing/Midwifery	25.68	26	1:1	15.38%	84.62%	1:1	1:1	100.00%	15.38%	84.62%	100.00%		100.00%	100.00%
Nursing Education/Clinical	5	5	1:1		100.00%	1:	1:1	100.00%		100.00%	100.00%			100.00%
Post-registration Nurse/ Midwife Student	12	12	1:1		100.00%	1:	1:1	33.33%		33.33%	100.00%			100.00%
Pre-registration Nurse/ Midwife Intern	21.07	44	1:0.5	13.64%	86.36%	1:0.5	1:0.5				100.00%		100.00%	100.00%
Nursing & Midwifery	1,711	1,942	1:0.9	12.67%	87.33%	1:0.9	1:0.9	93.82%	11.59%	82.23%	76.73%	23.27%	90.65%	74.71%
Other Health & Social Care	47.95	54	1:0.9	16.67%	83.33%	1:0.9	1:0.9	90.74%	16.67%	74.07%	77.78%	22.22%	88.89%	75.56%
Social Care	341.91	403	1:0.8	18.11%	81.89%	1:0.9	1:0.8	88.34%	15.88%	72.46%	60.30%	39.70%	65.75%	59.09%



Demographic Grade Group MAY 2024	WTE MAY 2024	No. MAY 2024	WTE : No	Number Male %	Number Female %	Male WTE : No.	Female WTE : No	Perm Count %	Perm Count Male %	Perm Count Female %	Fulltime Count %	Part time Count %	FT Count Male %	FT Count Female %
Total	6,385	7,398	1:0.9	19.60%	80.40%	1:0.9	1:0.9	89.13%	16.38%	72.75%	64.86%	35.14%	76.07%	62.12%
Physiotherapists	130.92	155	1:0.8	20.65%	79.35%	1:0.9	1:0.8	95.48%	20.00%	75.48%	67.10%	32.90%	87.50%	61.79%
Social Workers	119.51	134	1:0.9	14.93%	85.07%	1:1	1:0.9	97.76%	14.93%	82.84%	75.37%	24.63%	100.00%	71.05%
Speech & Language Therapists	126.02	141	1:0.9	0.71%	99.29%	1:1	1:0.9	92.91%	0.71%	92.20%	83.69%	16.31%	100.00%	83.57%
Audiology	8.97	9	1:1		100.00%	1:	1:1	100.00%		100.00%	88.89%	11.11%		88.89%
Counsellor Therapists	26.7	31	1:0.9	38.71%	61.29%	1:0.9	1:0.8	96.77%	38.71%	58.06%	70.97%	29.03%	83.33%	63.16%
Dental Hygienists	4.83	6	1:0.8		100.00%	1:	1:0.8	100.00%		100.00%	66.67%	33.33%		66.67%
Dietitians	34.36	38	1:0.9		100.00%	1:	1:0.9	100.00%		100.00%	78.95%	21.05%		78.95%
Occupational Therapists	158.97	179	1:0.9	6.70%	93.30%	1:1	1:0.9	97.21%	6.15%	91.06%	78.77%	21.23%	91.67%	77.84%
Pharmacists	8.01	11	1:0.7	18.18%	81.82%	1:0.9	1:0.7	90.91%	18.18%	72.73%	27.27%	72.73%	50.00%	22.22%
Pharmacy Technicians	1.28	2	1:0.6		100.00%	1:	1:0.6	100.00%		100.00%		100.00%		
Play Therapists/ Specialists	8.4	10	1:0.8		100.00%	1:	1:0.8	90.00%		90.00%	80.00%	20.00%		80.00%
Podiatrists & Chiropodists	23.01	26	1:0.9	7.69%	92.31%	1:1	1:0.9	92.31%	7.69%	84.62%	80.77%	19.23%	100.00%	79.17%
Psychologists	92.31	104	1:0.9	15.38%	84.62%	1:1	1:0.9	98.08%	15.38%	82.69%	71.15%	28.85%	93.75%	67.05%
Radiographers	0.8	1	1:0.8		100.00%	1:	1:0.8	100.00%		100.00%		100.00%		
Orthoptists	2	2	1:1		100.00%	1:	1:1	100.00%		100.00%	100.00%			100.00%
Health & Social Care Professionals	1,136	1,306	1:0.9	13.71%	86.29%	1:0.9	1:0.9	93.57%	12.86%	80.70%	70.52%	29.48%	80.45%	68.94%
General Administrative (III & IV)	478.23	547	1:0.9	9.14%	90.86%	1:0.9	1:0.9	94.33%	8.59%	85.74%	69.10%	30.90%	78.00%	68.21%
Middle Management (V-VII)	289.66	302	1:1	16.56%	83.44%	1:1	1:1	96.36%	15.89%	80.46%	89.74%	10.26%	96.00%	88.49%
Senior Management (VIII & GM)	54.36	56	1:1	37.50%	62.50%	1:1	1:1	92.86%	33.93%	58.93%	96.43%	3.57%	95.24%	97.14%
Executive Management	13.83	14	1:1	64.29%	35.71%	1:1	1:1	85.71%	50.00%	35.71%	100.00%		100.00%	100.00%
Management & Administrative	836	919	1:0.9	14.15%	85.85%	1:0.9	1:0.9	94.78%	13.17%	81.61%	78.02%	21.98%	89.23%	76.17%
Household Services	55.06	93	1:0.6	19.35%	80.65%	1:0.5	1:0.6	86.02%	12.90%	73.12%	25.81%	74.19%	33.33%	24.00%
Other Support	38.56	66	1:0.6	78.79%	21.21%	1:0.7	1:0.2	68.18%	63.64%	4.55%	22.73%	77.27%	25.00%	14.29%
Technical Services	3.96	4	1:1	75.00%	25.00%	1:1	1:1	75.00%	50.00%	25.00%	100.00%		100.00%	100.00%
Catering	32.72	35	1:0.9	28.57%	71.43%	1:1	1:0.9	100.00%	28.57%	71.43%	77.14%	22.86%	100.00%	68.00%
Maintenance	76.43	78	1:1	98.72%	1.28%	1:1	1:1	100.00%	98.72%	1.28%	93.59%	6.41%	93.51%	100.00%
Portering	7	7	1:1	100.00%		1:1	1:	100.00%	100.00%		100.00%		100.00%	
General Support	214	283	1:0.8	59.01%	40.99%	1:0.8	1:0.6	87.63%	53.00%	34.63%	53.00%	47.00%	66.47%	33.62%
Attendant/ Aide	190	212	1:0.9	28.30%	71.70%	1:0.9	1:0.9	90.09%	25.00%	65.09%	72.64%	27.36%	83.33%	68.42%
Health Care Assistant/ Care Assistant	1,317.79	1,540	1:0.9	26.95%	73.05%	1:0.9	1:0.8	83.31%	21.62%	61.69%	52.14%	47.86%	63.61%	47.91%
Home Helps	363.49	486	1:0.7	2.67%	97.33%	1:0.8	1:0.7	98.97%	2.67%	96.30%	11.11%	88.89%	7.69%	11.21%
Other Care Grades	102.17	114	1:0.9	36.84%	63.16%	1:0.9	1:0.9	91.23%	33.33%	57.89%	77.19%	22.81%	78.57%	76.39%
Pastoral Care	8.13	10	1:0.8	90.00%	10.00%	1:0.8	1:1	40.00%	40.00%		80.00%	20.00%	77.78%	100.00%



Demographic Grade Group MAY 2024	WTE MAY 2024	No. MAY 2024	WTE : No	Number Male %	Number Female %	Male WTE : No.	Female WTE : No	Perm Count %	Perm Count Male %	Perm Count Female %	Fulltime Count %	Part time Count %	FT Count Male %	FT Count Female %
Total	6,385	7,398	1:0.9	19.60%	80.40%	1:0.9	1:0.9	89.13%	16.38%	72.75%	64.86%	35.14%	76.07%	62.12%
Workshop Services	161.4	201	1:0.8	30.85%	69.15%	1:0.9	1:0.8	85.57%	27.86%	57.71%	48.76%	51.24%	67.74%	40.29%
Health & Social Care Assistants	32.01	33	1:1	18.18%	81.82%	1:1	1:1	60.61%	12.12%	48.48%	87.88%	12.12%	100.00%	85.19%
Health Promotion	20.59	22	1:0.9	18.18%	81.82%	1:1	1:0.9	100.00%	18.18%	81.82%	86.36%	13.64%	100.00%	83.33%
Home Care Services	39.2	42	1:0.9	11.90%	88.10%	1:0.9	1:0.9	100.00%	11.90%	88.10%	88.10%	11.90%	80.00%	89.19%
Patient & Client Care	2,235	2,660	1:0.8	23.16%	76.84%	1:0.9	1:0.8	87.18%	19.17%	68.01%	48.50%	51.50%	66.72%	43.00%



CHO 2 MAY 2024

Demographic Hospital MAY 2024	WTE MAY 2024	No. MAY 2024	WTE : No	Number Male %	Number Female %	Male WTE : No.	Female WTE : No	Perm Count %	Perm Count Male %	Perm Count Female %	Fulltime Count %	Part time Count %	FT Count Male %	FT Count Female %
Total	6,385	7,398	1:0.9	19.60%	80.40%	1:0.9	1:0.9	89.13%	16.38%	72.75%	64.86%	35.14%	76.07%	62.12%
Galway	3,933	4,616	1:0.9	20.47%	79.53%	1:0.9	1:0.8	86.72%	16.59%	70.13%	62.02%	37.98%	69.63%	60.07%
Mayo	1,675	1,919	1:0.9	18.86%	81.14%	1:0.9	1:0.9	92.39%	16.68%	75.72%	67.59%	32.41%	90.06%	62.36%
Other CHO 2	133	142	1:0.9	14.79%	85.21%	1:0.9	1:0.9	94.37%	12.68%	81.69%	88.03%	11.97%	85.71%	88.43%
Roscommon	644	721	1:0.9	16.92%	83.08%	1:0.9	1:0.9	94.87%	14.98%	79.89%	71.15%	28.85%	82.79%	68.78%



Month-on-Month Summary

WTE change since APR 2024		% WTE change since APR 2024	Overall	Consultants	Registrars	SHO/ Interns	Medical/ Dental/ other	Medical & Dental	Nurse/ Midwife Manager	Nurse/ Midwife Specialist & ANP/ NP	Staff Nurse/ Staff Midwife	Public Health Nurse	Nursing/ Midwifery Student	Nursing/ Midwifery other	Nursing & Midwifery	Therapy Professionals	Health Science/ Diagnostics	Social Care	Social Workers	Psychologists	Pharmacy	H&SC, Other	Health & Social Care Professionals	Management (VIII & above)	Administrative / Supervisory (I to VII)	Clinical (III & IV)	Management & Administrative	Support	Maintenance/ Technical	General Support	Health Care Assistants	Home Help	Care, other	Patient & Client Care
Overall		-0.12%	-7.5	-1.4	-8.6	-6.1	-1.1	-3.1	-4.5	+6.5	-6.3	-9.3	-2.5	+6.8	-22.1	+2.1	+8.8	+3.7	+6.4	-6.8	-8.7	-2.1	+3.4	-6.5	+1.7	-4.8	-3.8	-2.6	+6.5	-2.1	+19.2	-2.3	+3.1	+20.8
Galway	46023	+0.11%	+4.4	-1.4	-0.4	-0.3	-1.0	-3.0	-4.1	+6.6	-4.1	-5.4	-2.5	+0.0	-15.4	+1.8	+0.0	+4.5	-0.1	+0.5	-0.7	-1.2	+4.9	+0.7	+0.2	-3.6	-2.8	-1.6	+0.4	-1.2	+19.5	+0.1	+2.2	+21.9
Mayo	46024	-0.64%	-10.7	+0.0	-0.2	+0.3	-0.0	-0.0	+0.4	+0.8	-2.8	-2.0	-0.4	+0.0	-4.0	-0.4	+0.0	-0.8	+0.5	-1.4	+0.0	-0.7	-2.9	-1.7	+0.5	-1.0	-2.2	+0.1	+0.1	-0.1	-3.7	+2.0	-1.8	
Roscommon	46025	-0.25%	-1.8	+0.0	+0.0	-0.1	+0.0	-0.0	-0.8	-0.3	+0.8	-1.9	+0.4		-2.1	+0.7	+0.0		+0.0	+0.9		+0.0	+1.6	-0.1	+0.2	-0.2	+0.0	-1.1	+0.0	-1.1	-0.3	+1.3	-1.1	-0.0
Other CHO 2	46035	+0.37%	+0.5						-0.0	-0.7					-0.7				+0.0		+0.0	-0.2	-0.2	+0.5	+0.8	+0.0	+1.4							



CHO 2 Employment Report: MAY 2024

Year-to-Date Summary

WTE change since DEC 2023	% WTE change since DEC 2023	Overall	Consultants	Registrars	SHO/ Interns	Medical/ Dental, other	Medical & Dental	Nurse/ Midwife Manager	Nurse/ Midwife Specialist & ANMP	Staff Nurse/ Staff Midwife	Public Health Nurse	Nursing/ Midwifery Student	Nursing/ Midwifery other	Nursing & Midwifery	Therapy Professors	Health Science/ Diagnostics	Social Care	Social Workers	Psychologists	Pharmacy	H&SC, Other	Health & Social Care Professionals	Management (VIII & above)	Administrative / Supervisory (V to VII)	Clerical (III & IV)	Management & Administrative	Support	Maintenance/ Technical	General Support	Health Care Assistants	Home Help	Care, other	Patient & Client Care
Overall	+3.54%	+218	-1	+11	-1	+3	+11	+15	+21	+46	-7	+7	+1	+83	+27	+2	+4	+12	+0	+2	+2	+50	+1	+17	-9	+9	+1	+2	+3	+71	-12	+2	+61
Galway	+6.82%	+251	-1	+10	-1	+2	+10	+16	+20	+53	-2	-5	+1	+83	+28	+2	+2	+9	+1	+2	+0	+44	+4	+13	+3	+19	+4	+4	+7	+80	-1	+9	+87
Mayo	-1.47%	-25	-0	+1	-1	+1	+1	+1	+2	-9	-5	+9	+0	-2	+1	+0	+3	+3	-0	+0	+2	+8	-3	-4	-7	-14	+0	-1	-6	-8	-2	-16	
Roscommon	-1.77%	-12	+0	+0	-0	+0	+0	-0	-0	+2	-0	+2		+4	-2	+0		-0	-1		-1	-3	-0	+1	+0	+1	-3	-1	-4	-3	-3	-4	-10
Other CHO 2	+2.73%	+4						-1	+0					-1				-0		+0	+1	+1	+1	+7	-5	+3							



CHO 2 Employment Report: MAY 2024

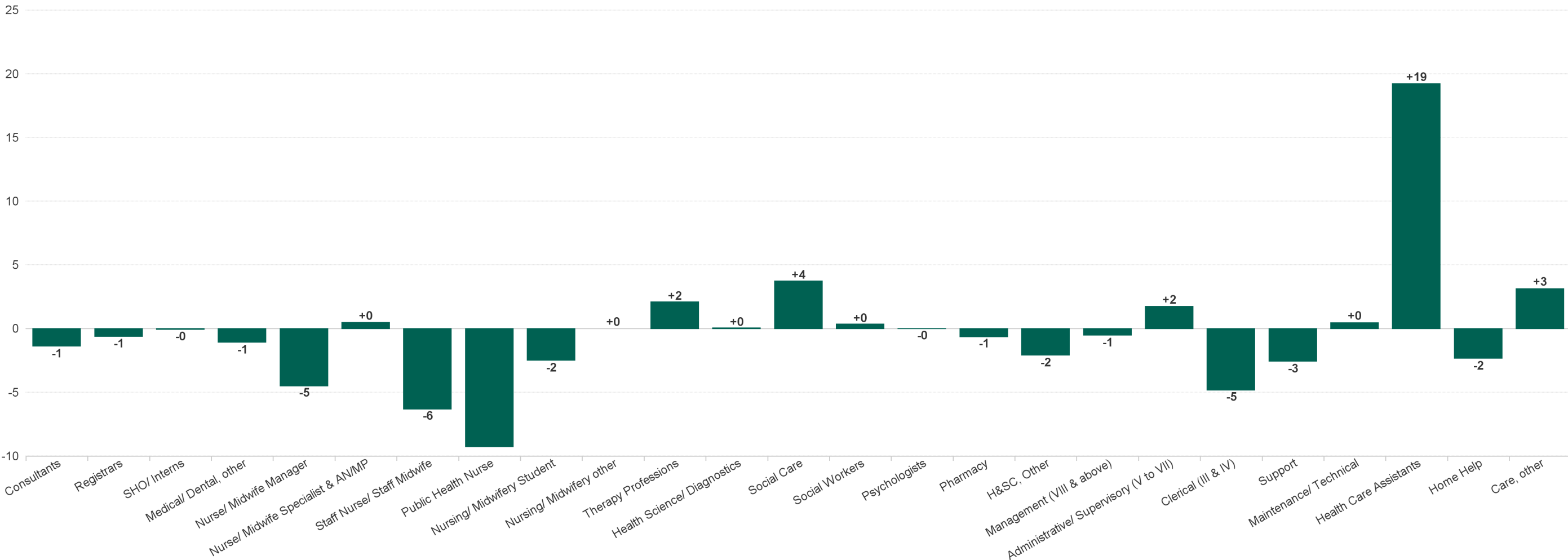
Year-on-Year Summary

WTE change since MAY 2023	% WTE change since MAY 2023	Overall	Consultants	Registrars	SHO/ Interns	Medical/ Dental, other	Medical & Dental	Nurse/ Midwife Manager	Nurse/ Midwife Specialist & ANMP	Staff Nurse/ Staff Midwife	Public Health Nurse	Nursing/ Midwifery Student	Nursing/ Midwifery other	Nursing & Midwifery	Therapy Professions	Health Science/ Diagnostics	Social Care	Social Workers	Psychologists	Pharmacy	H&SC, Other	Health & Social Care Professionals	Management (VIII & above)	Administrative / Supervisory (V to VII)	Clerical (III & IV)	Management & Administrative	Support	Maintenance/ Technical	General Support	Health Care Assistants	Home Help	Care, other	Patient & Client Care
Overall	+5.73%	+346	+4	+23	-6	-2	+19	+17	+32	+44	-3	-5	+0	+86	+40	-0	+43	+18	-3	+3	+13	+114	-2	+36	+7	+42	-10	+2	-8	+102	-7	-1	+94
Galway	+9.67%	+347	+2	+16	-3	-1	+13	+16	+27	+44	-1	-0	+0	+86	+26	+0	+35	+16	+1	+2	+1	+82	+1	+18	+17	+37	-6	+6	-0	+114	+6	+11	+130
Mayo	-0.25%	-4	+1	+7	-2	-0	+5	+5	+3	+1	-1	-4	+0	+4	+13	-0	+8	+3	-2	+1	-2	+21	-3	+0	-6	-9	-4	-2	-6	-3	-11	-5	-18
Roscommon	-3.02%	-20	+1	+1	-1	-0	+1	-2	+3	-1	-1	-1		-2	+1	+0		-1	-2		+1	-2	-0	+5	-3	+2	+1	-2	-1	-9	-2	-7	-18
Other CHO 2	+21.76%	+24						-1	+0					-1				+0		+0	+12	+13	-0	+13	-1	+12							



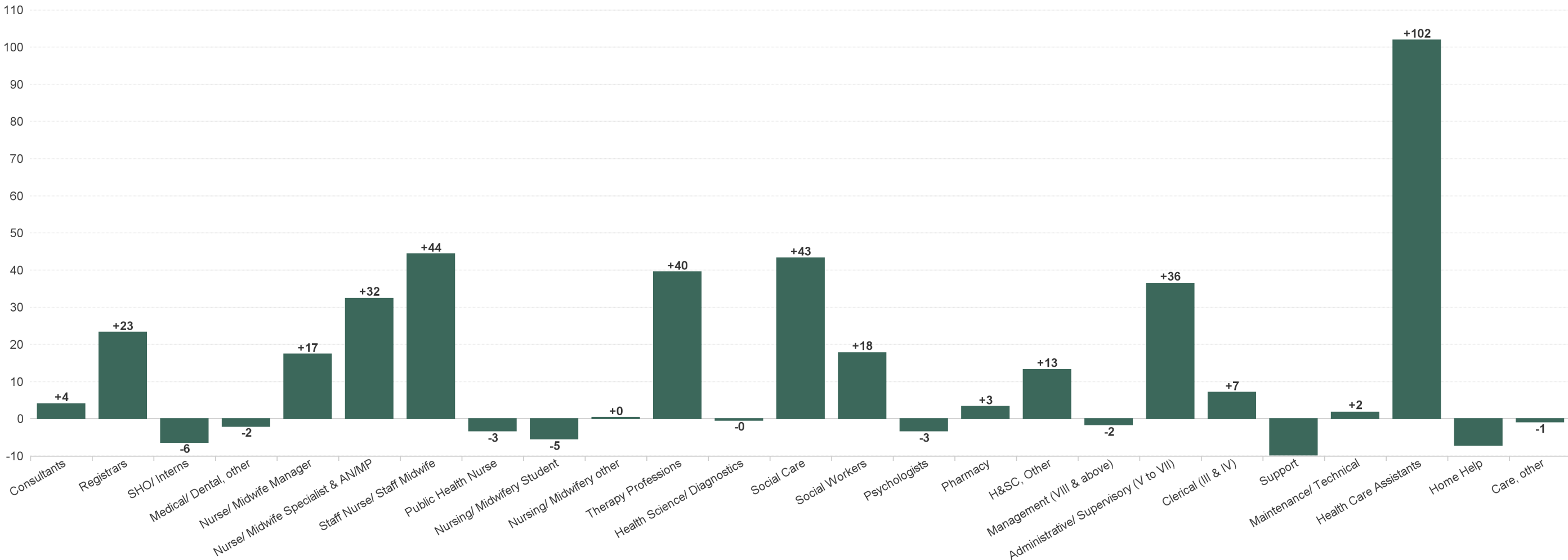
CHO 2 Employment Report: MAY 2024

Previous Month Summary Chart: Change since APR 2024



CHO 2 Employment Report: MAY 2024

Previous Year Summary Chart: Change since MAY 2023



CHO 2 Employment Report: MAY 2024

YTD Summary Chart: Change since DEC 2023

