

CHO 5 Employment Report: NOV 2024

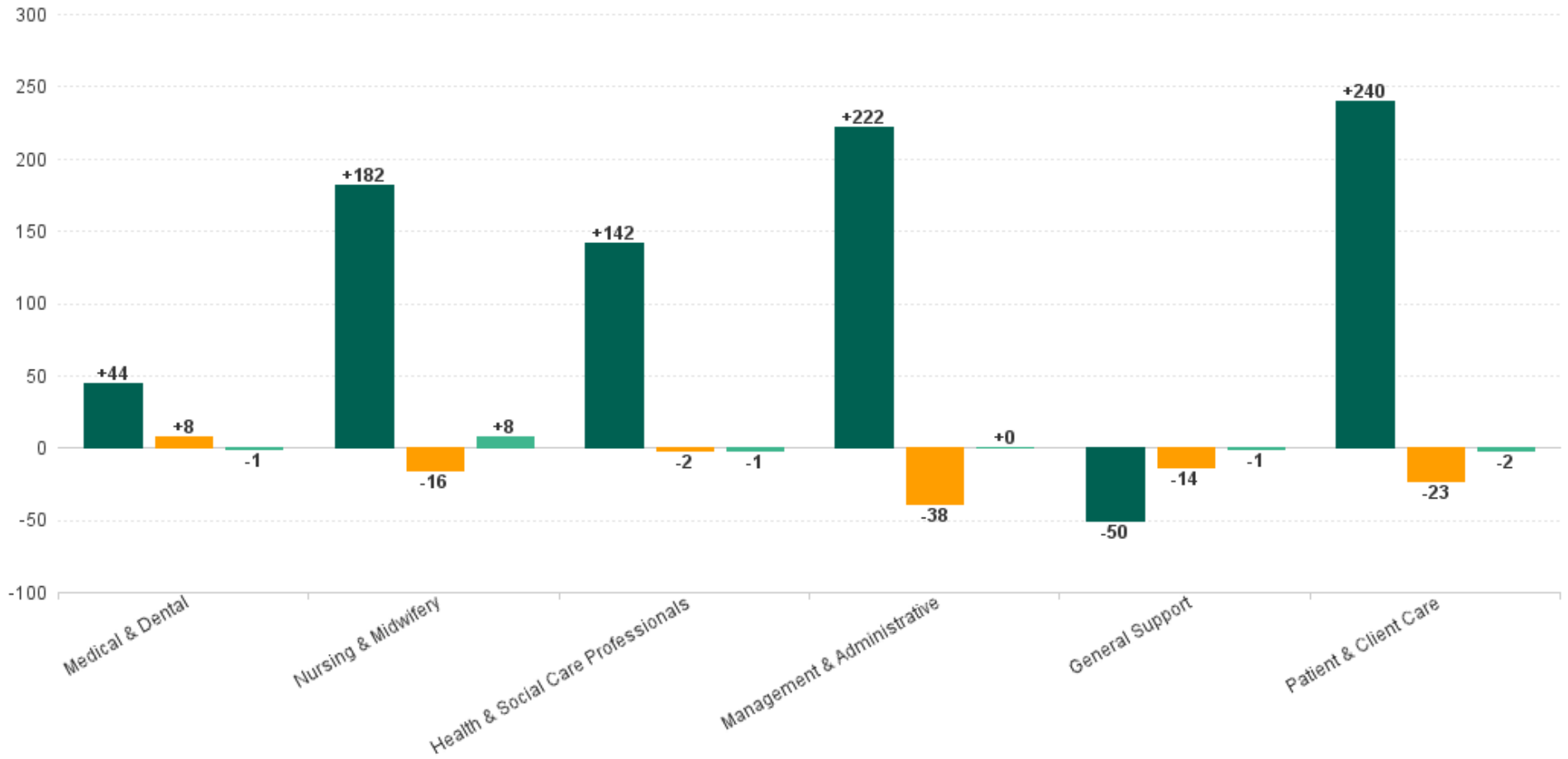
Employment Report : NOV 2024

Employment by Staff Group NOV 2024	WTE DEC 2019	WTE DEC 2022	WTE DEC 2023	WTE OCT 2024	WTE NOV 2024	WTE Change 2023	WTE Change 2024	WTE Change OCT 2024	WTE Change Dec 2022 to NOV 2024	WTE Change Dec 2019 to NOV 2024	% WTE Change Dec 2022 to NOV 2024	No. NOV 2024
<b>Overall</b>	<b>5,277</b>	<b>5,805</b>	<b>6,141</b>	<b>6,053</b>	<b>6,056</b>	<b>+336</b>	<b>-85</b>	<b>+3</b>	<b>+251</b>	<b>+779</b>	<b>+4.3%</b>	<b>7,067</b>
Consultants	30	36	39	38	38	+3	-1	0	+2	+8	+5.7%	41
Registrars	29	41	53	58	59	+11	+6	+1	+17	+30	+41.7%	60
SHO/ Interns	37	32	35	39	39	+2	+4	0	+6	+2	+19.1%	42
Medical/ Dental, other	65	75	72	72	70	-3	-2	-1	-5	+5	-6.7%	96
<b>Medical &amp; Dental</b>	<b>161</b>	<b>185</b>	<b>198</b>	<b>206</b>	<b>206</b>	<b>+13</b>	<b>+8</b>	<b>-1</b>	<b>+20</b>	<b>+44</b>	<b>+11.1%</b>	<b>239</b>
Nurse/ Midwife Manager	345	375	385	376	380	+10	-5	+3	+4	+34	+1.1%	404
Nurse/ Midwife Specialist & AN/MP	53	112	160	153	155	+49	-6	+2	+43	+102	+38.6%	168
Staff Nurse/ Staff Midwife	962	982	1,001	983	1,006	+19	+5	+23	+24	+44	+2.4%	1,153
Public Health Nurse	176	165	160	167	166	-4	+6	-1	+1	-10	+0.8%	202
<i>Nursing/ Midwifery awaiting registration</i>	2	6	21	20	5	+15	-15.83	-15	-1	+3	-10.7%	6
<i>Post-registration Nurse/ Midwife Student</i>	5	4	9	12	13	+5	4	+1	+9	+8	+230.8%	13
<i>Pre-registration Nurse/ Midwife Intern</i>	1	1	3	5	1	+2	-2.4	-4	0	+0	-12.3%	2
Nursing/ Midwifery Student	8	11	33	37	19	+23	-14	-18	+8	+11	+78.1%	21
Nursing/ Midwifery other	4	4	6	6	5	+1	-1	-1	+0	+0	+9.8%	5
<b>Nursing &amp; Midwifery</b>	<b>1,549</b>	<b>1,649</b>	<b>1,746</b>	<b>1,722</b>	<b>1,730</b>	<b>+97</b>	<b>-16</b>	<b>+8</b>	<b>+81</b>	<b>+182</b>	<b>+4.9%</b>	<b>1,953</b>
Therapy Professions	325	369	399	400	394	+30	-5	-6	+25	+68	+6.7%	453
Health Science/ Diagnostics	4	7	11	13	12	+4	+1	-1	+4	+8	+57.6%	12
Social Care	164	174	178	170	172	+4	-5	+2	-1	+8	-0.8%	204
Pharmacy	1	3	2	3	3	-1	+1	+0	0	+2	-3.2%	3
Psychologists	79	80	93	99	100	+13	+7	+1	+20	+21	+24.9%	112
Social Workers	61	70	79	81	84	+9	+5	+3	+14	+23	+20.4%	92
H&SC, Other	34	50	51	47	46	+1	-5	-1	-4	+12	-8.3%	51
<b>Health &amp; Social Care Professionals</b>	<b>668</b>	<b>752</b>	<b>811</b>	<b>811</b>	<b>810</b>	<b>+59</b>	<b>-2</b>	<b>-1</b>	<b>+57</b>	<b>+142</b>	<b>+7.6%</b>	<b>927</b>
Management (VIII & above)	44	72	69	63	62	-3	-7	-1	-10	+18	-14.0%	64
Administrative/ Supervisory (V to VII)	130	215	244	240	241	+29	-4	+1	+25	+110	+11.8%	252
Clerical (III & IV)	329	398	450	421	422	+52	-28	+1	+24	+93	+6.1%	475
<b>Management &amp; Administrative</b>	<b>504</b>	<b>686</b>	<b>763</b>	<b>725</b>	<b>725</b>	<b>+78</b>	<b>-38</b>	<b>+0</b>	<b>+39</b>	<b>+222</b>	<b>+5.8%</b>	<b>791</b>
Support	303	279	270	256	255	-9	-15	0	-23	-47	-8.4%	315
Maintenance/ Technical	32	29	28	30	29	-1	+1	0	0	-3	-0.9%	33
<b>General Support</b>	<b>334</b>	<b>308</b>	<b>298</b>	<b>285</b>	<b>284</b>	<b>-10</b>	<b>-14</b>	<b>-1</b>	<b>-24</b>	<b>-50</b>	<b>-7.7%</b>	<b>348</b>
Health Care Assistants	1,843	1,928	2,009	1,976	1,974	+81	-35	-2	+46	+131	+2.4%	2,417
Care, other	218	297	315	327	327	+18	+12	+0	+30	+109	+10.2%	392
<b>Patient &amp; Client Care</b>	<b>2,061</b>	<b>2,225</b>	<b>2,324</b>	<b>2,303</b>	<b>2,301</b>	<b>+99</b>	<b>-23</b>	<b>-2</b>	<b>+76</b>	<b>+240</b>	<b>+3.4%</b>	<b>2,809</b>



### WTE Change by Staff Category

■ WTE change since DEC 2019 ■ WTE change since DEC 2023 ■ WTE change since OCT 2024



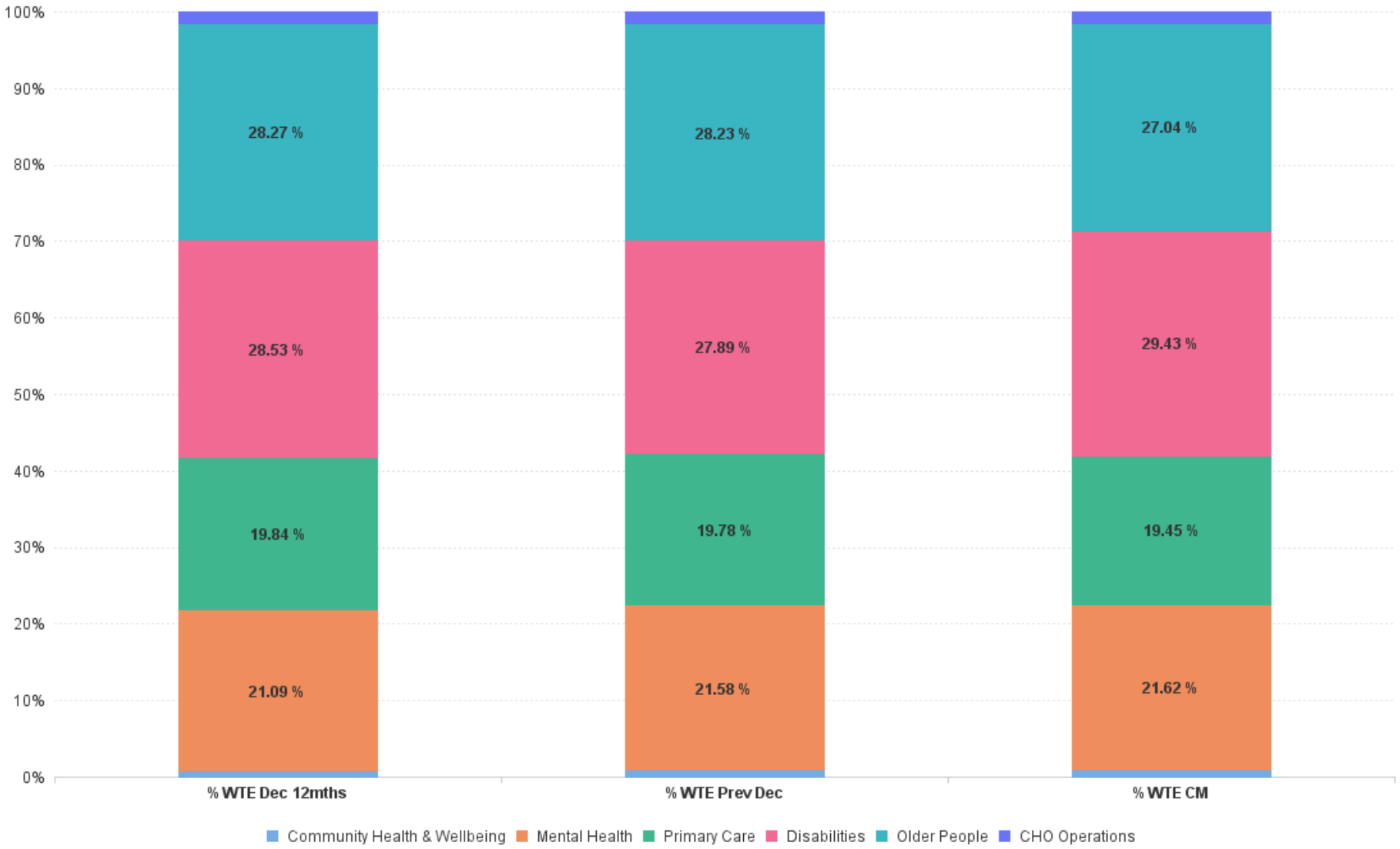
# Employment Report by Care Group : NOV 2024

CHO 5 NOV 2024

Care Group NOV 2024	WTE DEC 2019	WTE DEC 2022	WTE DEC 2023	WTE OCT 2024	WTE NOV 2024	WTE Change 2023	WTE Change 2024	WTE Change OCT 2024	WTE Change Dec 2022 to NOV 2024	WTE Change Dec 2019 to NOV 2024	% WTE Change Dec 2022 to NOV 2024	No. NOV 2024
<b>Overall</b>	<b>5,277</b>	<b>5,805</b>	<b>6,141</b>	<b>6,053</b>	<b>6,056</b>	<b>+336</b>	<b>-85</b>	<b>+3</b>	<b>+251</b>	<b>+779</b>	<b>+4.3%</b>	<b>7,067</b>
Community Health & Wellbeing		38	49	50	48	+11	0	-1	+10	+48	+26.5%	54
Mental Health	1,177	1,224	1,325	1,311	1,309	+101	-16	-1	+85	+132	+6.9%	1,441
Primary Care	958	1,152	1,214	1,183	1,178	+63	-37	-5	+26	+220	+2.3%	1,397
Disabilities	1,488	1,656	1,713	1,757	1,782	+57	+69	+26	+126	+295	+7.6%	2,092
Older People	1,653	1,641	1,733	1,649	1,637	+92	-96	-12	-4	-16	-0.2%	1,977
CHO Operations		94	106	103	101	+12	-5	-3	+7	+101	+7.7%	106
<b>Community Services</b>	<b>5,277</b>	<b>5,805</b>	<b>6,141</b>	<b>6,053</b>	<b>6,056</b>	<b>+336</b>	<b>-85</b>	<b>+3</b>	<b>+251</b>	<b>+779</b>	<b>+4.3%</b>	<b>7,067</b>



### % Total by Care Group



# Employment Report by HSE/S38 : NOV 2024

CHO 5 NOV 2024

Administration NOV 2024	WTE DEC 2019	WTE DEC 2022	WTE DEC 2023	WTE OCT 2024	WTE NOV 2024	WTE Change 2023	WTE Change 2024	WTE Change OCT 2024	WTE Change Dec 2022 to NOV 2024	WTE Change Dec 2019 to NOV 2024	% WTE Change Dec 2022 to NOV 2024	No. NOV 2024
<b>Overall</b>	<b>5,277</b>	<b>5,805</b>	<b>6,141</b>	<b>6,053</b>	<b>6,056</b>	<b>+336</b>	<b>-85</b>	<b>+3</b>	<b>+251</b>	<b>+779</b>	<b>+4.3%</b>	<b>7,067</b>
Health Service Executive	4,153	4,571	4,880	4,748	4,733	+308	-147	-16	+161	+580	+3.5%	5,518
Section 38 Voluntary Agencies	1,123	1,234	1,261	1,304	1,323	+27	+62	+19	+90	+200	+7.3%	1,549



# Employment Report by HSE.S38: NOV 2024

## Health Service Executive

HSE&S38 NOV 2024	WTE DEC 2019	WTE DEC 2022	WTE DEC 2023	WTE OCT 2024	WTE NOV 2024	WTE Change 2023	WTE Change 2024	WTE Change OCT 2024	WTE Change Dec 2022 to NOV 2024	WTE Change Dec 2019 to NOV 2024	% WTE Change Dec 2022 to NOV 2024	No. NOV 2024
<b>Total Health Service Executive</b>	<b>4,153</b>	<b>4,571</b>	<b>4,880</b>	<b>4,748</b>	<b>4,733</b>	<b>+308</b>	<b>-147</b>	<b>-16</b>	<b>+161</b>	<b>+580</b>	<b>+3.5%</b>	<b>5,518</b>
Consultants	29	35	38	38	38	+2	-0	-0	+2	+8	+6.2%	40
Registrars	29	41	53	58	59	+11	+6	+1	+17	+30	+41.7%	60
SHO/ Interns	37	32	35	39	39	+2	+4	-0	+6	+2	+19.1%	42
Medical/ Dental, other	65	75	72	72	70	-3	-2	-1	-5	+5	-6.7%	96
<b>Medical &amp; Dental</b>	<b>160</b>	<b>184</b>	<b>197</b>	<b>206</b>	<b>205</b>	<b>+13</b>	<b>+8</b>	<b>-1</b>	<b>+21</b>	<b>+45</b>	<b>+11.2%</b>	<b>238</b>
Nurse/ Midwife Manager	299	327	337	327	328	+10	-9	+2	+1	+30	+0.4%	349
Nurse/ Midwife Specialist & AN/MP	53	112	160	153	155	+49	-6	+2	+43	+102	+38.6%	168
Staff Nurse/ Staff Midwife	862	878	910	887	904	+32	-6	+17	+26	+42	+2.9%	1,036
Public Health Nurse	176	165	160	167	166	-4	+6	-1	+1	-10	+0.8%	202
<i>Nursing/ Midwifery awaiting registration</i>	2	6	21	20	5	+15	-16	-15	-1	+3	-0.11	6
<i>Post-registration Nurse/ Midwife Student</i>	5	4	9	12	13	+5	+4	+1	+9	+8	2.31	13
<i>Pre-registration Nurse/ Midwife Intern</i>	1	1	1	4		+0	-1	-4	-1	-1	-1	
Nursing/ Midwifery Student	8	11	31	36	18	+21	-13	-18	+7	+10	+68.7%	19
Nursing/ Midwifery other	4	4	6	6	5	+1	-1	-1	+0	+0	+9.8%	5
<b>Nursing &amp; Midwifery</b>	<b>1,402</b>	<b>1,497</b>	<b>1,605</b>	<b>1,575</b>	<b>1,576</b>	<b>+108</b>	<b>-29</b>	<b>+0</b>	<b>+79</b>	<b>+174</b>	<b>+5.3%</b>	<b>1,779</b>
<i>Dietitians</i>	15	26	31	33	33	+5	+1	-0	+6	+18	0.24	36
<i>Occupational Therapists</i>	119	135	142	146	144	+7	+1	-2	+9	+25	0.07	164
<i>Orthoptists</i>	1	1	2	2	2	+1	+0	+0	+1	+2	1.02	2
<i>Physiotherapists</i>	88	102	108	108	107	+7	-2	-1	+5	+19	0.05	127
<i>Podiatrists &amp; Chiropodists</i>	1	5	7	6	6	+1	-1	-0	+1	+5	0.1	7
<i>Speech &amp; Language Therapists</i>	100	99	106	102	100	+8	-7	-2	+1	+0	0.01	114
Therapy Professions	323	368	397	397	391	+29	-6	-6	+23	+68	+6.2%	450
Health Science/ Diagnostics	4	7	11	13	12	+4	+1	-1	+4	+8	+57.6%	12
Social Care	26	30	37	35	36	+7	-0	+1	+6	+10	+20.1%	41
Pharmacy	1	3	2	3	3	-1	+1	+0	-0	+2	-3.2%	3
Psychologists	74	75	87	93	94	+13	+7	+1	+20	+20	+26.3%	106
Social Workers	49	61	72	73	76	+11	+4	+3	+15	+27	+25.0%	83
H&SC, Other	27	44	45	41	40	+0	-5	-1	-4	+13	-10.0%	43
<b>Health &amp; Social Care Professionals</b>	<b>505</b>	<b>588</b>	<b>650</b>	<b>655</b>	<b>652</b>	<b>+62</b>	<b>+1</b>	<b>-3</b>	<b>+64</b>	<b>+147</b>	<b>+10.8%</b>	<b>738</b>
Management (VIII & above)	37	60	58	52	51	-3	-6	-1	-9	+14	-15.1%	53
Administrative/ Supervisory (V to VII)	108	190	213	203	204	+22	-9	+1	+14	+96	+7.1%	214
Clerical (III & IV)	283	351	399	376	376	+49	-24	-0	+25	+93	+7.1%	422
<b>Management &amp; Administrative</b>	<b>428</b>	<b>601</b>	<b>670</b>	<b>631</b>	<b>631</b>	<b>+69</b>	<b>-39</b>	<b>-1</b>	<b>+29</b>	<b>+203</b>	<b>+4.9%</b>	<b>689</b>
Support	290	271	265	251	250	-6	-15	-1	-21	-40	-7.7%	308
Maintenance/ Technical	24	20	19	20	20	-1	+1	-0	+0	-4	+0.2%	22
<b>General Support</b>	<b>315</b>	<b>291</b>	<b>284</b>	<b>271</b>	<b>271</b>	<b>-7</b>	<b>-14</b>	<b>-1</b>	<b>-21</b>	<b>-44</b>	<b>-7.2%</b>	<b>330</b>
Health Care Assistants	1,265	1,281	1,325	1,266	1,257	+44	-68	-9	-24	-8	-1.9%	1,576
Care, other	78	128	147	144	142	+19	-5	-2	+14	+64	+10.7%	168
<b>Patient &amp; Client Care</b>	<b>1,343</b>	<b>1,409</b>	<b>1,473</b>	<b>1,410</b>	<b>1,399</b>	<b>+63</b>	<b>-74</b>	<b>-11</b>	<b>-10</b>	<b>+56</b>	<b>-0.7%</b>	<b>1,744</b>

## Section 38 Voluntary Agencies

HSE&S38 NOV 2024	WTE DEC 2019	WTE DEC 2022	WTE DEC 2023	WTE OCT 2024	WTE NOV 2024	WTE Change 2023	WTE Change 2024	WTE Change OCT 2024	WTE Change Dec 2022 to NOV 2024	WTE Change Dec 2019 to NOV 2024	% WTE Change Dec 2022 to NOV 2024	No. NOV 2024
<b>Total Section 38 Voluntary Agencies</b>	<b>1,123</b>	<b>1,234</b>	<b>1,261</b>	<b>1,304</b>	<b>1,323</b>	<b>+27</b>	<b>+62</b>	<b>+19</b>	<b>+90</b>	<b>+200</b>	<b>+7.3%</b>	<b>1,549</b>
Consultants	1	1	1	1	1	+0	-0	+0	-0	-0	-12.4%	1
<b>Medical &amp; Dental</b>	<b>1</b>	<b>1</b>	<b>1</b>	<b>1</b>	<b>1</b>	<b>+0</b>	<b>-0</b>	<b>+0</b>	<b>-0</b>	<b>-0</b>	<b>-12.4%</b>	<b>1</b>
Nurse/ Midwife Manager	47	48	48	49	51	-1	+4	+2	+3	+5	+6.0%	55
Staff Nurse/ Staff Midwife	99	104	91	96	102	-13	+11	+6	-2	+3	-1.6%	117
<i>Nursing/ Midwifery awaiting registration</i>												-1
<i>Pre-registration Nurse/ Midwife Intern</i>			2	1	1	+2	-1	+0	+1	+1	-1	2
Nursing/ Midwifery Student			2	1	1	+2	-1	+0	+1	+1	-100.0%	2
<b>Nursing &amp; Midwifery</b>	<b>146</b>	<b>152</b>	<b>141</b>	<b>147</b>	<b>154</b>	<b>-12</b>	<b>+14</b>	<b>+8</b>	<b>+2</b>	<b>+8</b>	<b>+1.4%</b>	<b>174</b>
<i>Speech &amp; Language Therapists</i>	3	1	2	3	3	+1	+1	+0	+2	+0	1.8	3
Therapy Professions	3	1	2	3	3	+1	+1	+0	+2	+0	+180.0%	3
Social Care	138	143	141	134	136	-3	-5	+2	-7	-2	-5.2%	163
Psychologists	5	5	5	5	5	+0	+0	+0	+0	+1	+3.9%	6
Social Workers	11	9	7	7	8	-2	+1	+0	-1	-4	-11.6%	9
H&SC, Other	7	6	6	7	6	+0	-0	-0	+0	-1	+4.5%	8
<b>Health &amp; Social Care Professionals</b>	<b>163</b>	<b>164</b>	<b>161</b>	<b>156</b>	<b>158</b>	<b>-3</b>	<b>-3</b>	<b>+2</b>	<b>-6</b>	<b>-5</b>	<b>-3.8%</b>	<b>189</b>
Management (VIII & above)	7	12	12	11	11	-0	-1	+0	-1	+4	-8.3%	11
Administrative/ Supervisory (V to VII)	22	25	31	37	37	+6	+5	+0	+12	+14	+47.2%	38
Clerical (III & IV)	46	47	50	46	47	+3	-4	+1	-1	+0	-1.6%	53
<b>Management &amp; Administrative</b>	<b>76</b>	<b>84</b>	<b>94</b>	<b>93</b>	<b>94</b>	<b>+9</b>	<b>+1</b>	<b>+1</b>	<b>+10</b>	<b>+19</b>	<b>+11.9%</b>	<b>102</b>
Support	13	7	5	5	5	-2	-0	+0	-2	-8	-33.7%	7
Maintenance/ Technical	7	9	9	9	9	-1	+0	-0	-0	+2	-3.4%	11
<b>General Support</b>	<b>20</b>	<b>17</b>	<b>14</b>	<b>14</b>	<b>14</b>	<b>-3</b>	<b>+0</b>	<b>-0</b>	<b>-3</b>	<b>-6</b>	<b>-16.7%</b>	<b>18</b>
Health Care Assistants	578	647	684	710	717	+37	+33	+7	+70	+139	+10.8%	841
Care, other	140	168	168	183	185	-1	+17	+2	+16	+45	+9.8%	224
<b>Patient &amp; Client Care</b>	<b>718</b>	<b>816</b>	<b>851</b>	<b>893</b>	<b>902</b>	<b>+36</b>	<b>+51</b>	<b>+9</b>	<b>+86</b>	<b>+184</b>	<b>+10.6%</b>	<b>1,065</b>

CHO 5 by S38 Agency: NOV 2024

Aurora

Grade Group (KD)	WTE DEC 2019	WTE DEC 2022	WTE DEC 2023	WTE OCT 2024	WTE NOV 2024	WTE Change 2023	WTE Change 2024	WTE Change OCT 2024	WTE Change Dec 2022 to NOV 2024	WTE Change Dec 2019 to NOV 2024	% WTE Change Dec 2022 to NOV 2024	No. NOV 2024
<b>Total Aurora</b>	<b>279</b>	<b>268</b>	<b>261</b>	<b>281</b>	<b>285</b>	<b>-6.3</b>	<b>23.3</b>	<b>3.49</b>	<b>+17.0</b>	<b>+5.7</b>	<b>+6.4%</b>	<b>315</b>
Nurse/ Midwife Manager	10	12	12	12	12	+0	+0	+0	+0	+2	+3.8%	14
Staff Nurse/ Staff Midwife	25	21	13	19	19	-8	+6	+0	-2	-6	-8.5%	21
Nursing & Midwifery	36	33	25	32	32	-8	+6	+0	-1	-4	-4.1%	35
Social Care	35	31	31	26	26	-0	-5	+0	-5	-9	-15.9%	28
Social Workers	2			1	1		+1	+0	+1	-1	-100.0%	1
H&SC, Other	3	1	1	1	1	-1	+1	+0	+0	-2	+7.1%	2
Health & Social Care Professionals	40	32	31	28	28	-1	-3	+0	-4	-12	-13.2%	31
Management (VIII & above)		4	5	3	3	+1	-2	+0	-1	+3	-25.0%	3
Administrative/ Supervisory (V to VII)	7	3	4	8	8	+1	+4	+0	+5	+1	+156.3%	8
Clerical (III & IV)	14	13	18	14	14	+6	-4	+0	+2	+0	+12.1%	16
Management & Administrative	21	20	27	25	25	+7	-2	+0	+5	+4	+26.5%	27
Support	7	1	1	1	1	+0	+0	+0	+0	-6	+0.0%	1
Maintenance/ Technical	3	2	2	2	2	-0	+0	+0	-0	-1	-7.0%	2
General Support	10	3	3	3	3	-0	+0	+0	-0	-7	-5.1%	3
Health Care Assistants	173	180	176	194	198	-5	+22	+3	+18	+24	+9.7%	219
Patient & Client Care	173	180	176	194	198	-5	+22	+3	+18	+24	+9.7%	219

Bros. of Charity Waterford

Grade Group (KD)	WTE DEC 2019	WTE DEC 2022	WTE DEC 2023	WTE OCT 2024	WTE NOV 2024	WTE Change 2023	WTE Change 2024	WTE Change OCT 2024	WTE Change Dec 2022 to NOV 2024	WTE Change Dec 2019 to NOV 2024	% WTE Change Dec 2022 to NOV 2024	No. NOV 2024
<b>Total Bros. of Charity Waterford</b>	<b>630</b>	<b>742</b>	<b>783</b>	<b>814</b>	<b>827</b>	<b>41.08</b>	<b>43.82</b>	<b>13.08</b>	<b>+84.9</b>	<b>+196.6</b>	<b>+11.4%</b>	<b>978</b>
Consultants	1	1	1	1	1	+0	-0	+0	-0	-0	-12.4%	1
Medical & Dental	1	1	1	1	1	+0	-0	+0	-0	-0	-12.4%	1
Nurse/ Midwife Manager	24	24	24	23	25	+0	+1	+2	+1	+1	+3.7%	26
Staff Nurse/ Staff Midwife	48	54	51	56	62	-3	+12	+6	+8	+14	+15.0%	70
Pre-registration Nurse/ Midwife Intern			2	1	1	+2	-1	-0	+1	+1	-100.0%	1
Nursing/ Midwifery Student			2	1	1	+2	-1	-0	+1	+1	-100.0%	1
Nursing & Midwifery	72	78	77	80	88	-1	+11	+8	+10	+15	+12.2%	97
Therapy Professions	3	1	2	3	3	+1	+1	+0	+2	+0	+180.0%	3
Social Care	66	82	85	86	87	+3	+2	+1	+5	+20	+6.0%	104
Psychologists	5	5	5	5	5	+0	+0	+0	+0	+1	+3.9%	6
Social Workers	10	9	7	7	7	-2	+0	+0	-2	-2	-18.2%	8
H&SC, Other	4	5	6	5	5	+1	-1	-0	+0	+1	+3.8%	6
Health & Social Care Professionals	87	101	104	106	107	+3	+3	+1	+6	+20	+5.5%	127
Management (VIII & above)	5	6	5	5	5	-1	+0	+0	-1	+0	-16.7%	5
Administrative/ Supervisory (V to VII)	13	19	24	27	27	+5	+3	+0	+8	+15	+43.1%	28
Clerical (III & IV)	26	29	27	25	26	-2	-1	+1	-3	+0	-9.7%	30
Management & Administrative	43	54	56	57	58	+2	+3	+1	+4	+15	+8.2%	63
Support	2	1	1	1	1	-0	+0	+0	-0	-1	-41.3%	2
Maintenance/ Technical	3	5	5	5	5	-0	+0	-0	-0	+2	-3.6%	6
General Support	4	6	5	6	5	-1	+0	-0	-1	+1	-9.5%	8
Health Care Assistants	331	394	435	448	451	+40	+16	+2	+56	+120	+14.3%	543
Care, other	91	107	105	116	117	-2	+12	+1	+10	+26	+9.2%	139
Patient & Client Care	422	502	540	564	568	+38	+28	+3	+66	+146	+13.2%	682

Carriglea Cairde Services



Grade Group (KD)	WTE DEC 2019	WTE DEC 2022	WTE DEC 2023	WTE OCT 2024	WTE NOV 2024	WTE Change 2023	WTE Change 2024	WTE Change OCT 2024	WTE Change Dec 2022 to NOV 2024	WTE Change Dec 2019 to NOV 2024	% WTE Change Dec 2022 to NOV 2024	No. NOV 2024
<b>Total Carriglea Cairde Services</b>	<b>214</b>	<b>224</b>	<b>217</b>	<b>210</b>	<b>212</b>	<b>-7.45</b>	<b>-4.88</b>	<b>2.28</b>	<b>-12.3</b>	<b>-2.5</b>	<b>-5.5%</b>	<b>256</b>
Nurse/ Midwife Manager	12	13	12	14	14	-1	+3	+0	+2	+2	+12.2%	15
Staff Nurse/ Staff Midwife	26	28	27	21	20	-2	-6	-1	-8	-6	-28.4%	26
Nursing/ Midwifery awaiting registration											-100.0%	
Pre-registration Nurse/ Midwife Intern				0	1		+1	+0	+1	+1	-100.0%	1
Nursing/ Midwifery Student				0	1		+1	+0	+1	+1	-100.0%	1
<b>Nursing &amp; Midwifery</b>	<b>38</b>	<b>41</b>	<b>38</b>	<b>36</b>	<b>35</b>	<b>-3</b>	<b>-3</b>	<b>-0</b>	<b>-6</b>	<b>-3</b>	<b>-14.6%</b>	<b>42</b>
Social Care	36	31	25	23	23	-5	-2	+0	-7	-13	-24.4%	31
<b>Health &amp; Social Care Professionals</b>	<b>36</b>	<b>31</b>	<b>25</b>	<b>23</b>	<b>23</b>	<b>-5</b>	<b>-2</b>	<b>+0</b>	<b>-7</b>	<b>-13</b>	<b>-24.4%</b>	<b>31</b>
Management (VIII & above)	2	2	2	3	3	+0	+1	+0	+1	+1	+50.0%	3
Administrative/ Supervisory (V to VII)	3	3	4	2	2	+1	-2	+0	-1	-1	-38.1%	2
Clerical (III & IV)	7	6	5	6	6	-0	+1	+0	+1	-1	+9.4%	7
<b>Management &amp; Administrative</b>	<b>12</b>	<b>11</b>	<b>11</b>	<b>11</b>	<b>11</b>	<b>+0</b>	<b>-0</b>	<b>+0</b>	<b>+0</b>	<b>-1</b>	<b>+3.9%</b>	<b>12</b>
Support	5	6	4	4	4	-2	-0	+0	-2	-1	-36.7%	4
Maintenance/ Technical	1	2	2	2	2	+0	+0	+0	+0	+1	+0.0%	3
<b>General Support</b>	<b>6</b>	<b>8</b>	<b>6</b>	<b>6</b>	<b>6</b>	<b>-2</b>	<b>-0</b>	<b>+0</b>	<b>-2</b>	<b>-0</b>	<b>-25.9%</b>	<b>7</b>
Health Care Assistants	74	73	73	67	69	+1	-5	+1	-4	-5	-5.3%	79
Care, other	49	61	63	67	68	+1	+5	+1	+7	+19	+10.8%	85
<b>Patient &amp; Client Care</b>	<b>123</b>	<b>134</b>	<b>136</b>	<b>134</b>	<b>137</b>	<b>+2</b>	<b>+1</b>	<b>+2</b>	<b>+3</b>	<b>+14</b>	<b>+2.1%</b>	<b>164</b>

CHO 5 Employment Report: NOV 2024

Community Health & Wellbeing NOV 2024	WTE DEC 2019	WTE DEC 2022	WTE DEC 2023	WTE OCT 2024	WTE NOV 2024	WTE Change 2023	WTE Change 2024	WTE Change OCT 2024	WTE Change Dec 2022 to NOV 2024	WTE Change Dec 2019 to NOV 2024	% WTE Change Dec 2022 to NOV 2024	No. NOV 2024
<b>Total Community Health &amp; Wellbeing</b>		38	49	50	48	+11	0	-1	+10	+48	+26.5%	54
Nurse/ Midwife Manager			2	1	1	+2	-1	0	+1	+1	-100.0%	1
Nurse/ Midwife Specialist & AN/MP			3	6	6	+3	+3	0	+6	+6	-100.0%	7
<b>Nursing &amp; Midwifery</b>			5	7	7	+5	+2	0	+7	+7	-100.0%	8
Dietitians		3	2	2	2	-1	0	+0	-1	+2	-37.3%	2
<b>Therapy Professions</b>		3	2	2	2	-1	0	+0	-1	+2	-37.3%	2
<b>Pharmacy</b>				1	1		+1	+0	+1	+1	-100.0%	1
<b>Health &amp; Social Care Professionals</b>		3	2	3	3	-1	+1	+0	0	+3	-4.7%	3
Management (VIII & above)		2	4	4	5	+2	+1	+0	+3	+5	+145.9%	5
Administrative/ Supervisory (V to VII)		14	7	6	6	-7	-1	0	-8	+6	-58.4%	6
Clerical (III & IV)		4	6	7	6	+1	+0	-1	+2	+6	+35.1%	7
<b>Management &amp; Administrative</b>		20	16	17	16	-4	0	-1	-4	+16	-19.1%	18
<b>Care, other</b>		15	25	23	23	+10	-3	0	+7	+23	+47.4%	25
<b>Patient &amp; Client Care</b>		15	25	23	23	+10	-3	0	+7	+23	+47.4%	25

Mental Health NOV 2024	WTE DEC 2019	WTE DEC 2022	WTE DEC 2023	WTE OCT 2024	WTE NOV 2024	WTE Change 2023	WTE Change 2024	WTE Change OCT 2024	WTE Change Dec 2022 to NOV 2024	WTE Change Dec 2019 to NOV 2024	% WTE Change Dec 2022 to NOV 2024	No. NOV 2024
<b>Total Mental Health</b>	1,177	1,224	1,325	1,311	1,309	+101	-16	-1	+85	+132	+6.9%	1,441
Consultants	26	33	36	36	36	+3	0	0	+2	+10	+7.3%	38
Registrars	10	12	18	18	17	+6	0	0	+6	+7	+46.9%	18
SHO/ Interns	32	32	34	38	38	+1	+4	0	+5	+6	+16.0%	41
Medical/ Dental, other	2	2	2	2	2	+0	+0	+0	+0	+0	+2.6%	2
<b>Medical &amp; Dental</b>	70	80	90	93	93	+10	+3	-1	+13	+22	+16.6%	99
Nurse/ Midwife Manager	171	175	155	152	152	-21	-2	+0	-23	-19	-13.0%	160
Nurse/ Midwife Specialist & AN/MP	43	68	91	85	86	+23	-5	+1	+18	+43	+26.3%	91
Staff Nurse/ Staff Midwife	412	398	393	406	421	-5	+28	+15	+23	+9	+5.7%	470
Nursing/ Midwifery awaiting registration		6	19	18	5	+13	-14	-13	-1	+5	-10.7%	6
Pre-registration Nurse/ Midwife Intern	1	1	1	3		+0	-1	-3	-1	-1	-100.0%	
Nursing/ Midwifery Student	1	7	20	21	5	+14	-15	-16	-2	+4	-24.0%	6
Nursing/ Midwifery other	4	4	5	4	4	+1	-1	0	+0	+0	+11.7%	4
<b>Nursing &amp; Midwifery</b>	631	651	663	668	668	+12	+4	0	+17	+37	+2.6%	731
Dietitians	2									-2	-100.0%	
Occupational Therapists	32	30	28	30	29	-2	+0	-1	-1	-4	-4.2%	34
Speech & Language Therapists	4	4	4	4	4	+0	+0	0	+0	0	+5.8%	4
<b>Therapy Professions</b>	38	34	32	34	33	-2	+0	-1	-1	-5	-3.1%	38
<b>Social Care</b>	5	4	4	5	4	+1	0	-1	+0	-1	+8.0%	5
Psychologists	21	27	33	32	32	+6	-1	+0	+5	+11	+19.8%	38
Social Workers	28	29	34	31	31	+5	-3	+1	+2	+3	+7.4%	34
H&SC, Other	9	23	21	19	19	-2	-2	0	-4	+10	-17.7%	20
<b>Health &amp; Social Care Professionals</b>	101	117	125	120	119	+8	-5	-1	+3	+18	+2.3%	135
Management (VIII & above)	4	6	5	5	4	-1	-1	-1	-1	+0	-21.8%	5
Administrative/ Supervisory (V to VII)	21	23	30	29	30	+7	+0	+2	+7	+9	+29.8%	32
Clerical (III & IV)	74	74	99	93	93	+25	-6	+0	+18	+19	+24.8%	101
<b>Management &amp; Administrative</b>	99	104	134	126	128	+31	-6	+1	+24	+29	+23.4%	138
Support	171	175	183	175	176	+9	-8	+0	+1	+4	+0.6%	198
Maintenance/ Technical	19	14	13	14	14	-1	+1	0	+0	-5	+1.4%	15
<b>General Support</b>	190	189	197	189	190	+8	-7	+0	+1	-1	+0.7%	213
Health Care Assistants	73	73	102	97	96	+28	-6	-1	+23	+23	+31.0%	103
Care, other	13	12	15	17	16	+3	+1	0	+4	+3	+36.8%	22
<b>Patient &amp; Client Care</b>	85	85	117	113	112	+32	-5	-1	+27	+27	+31.8%	125



Primary Care NOV 2024	WTE DEC 2019	WTE DEC 2022	WTE DEC 2023	WTE OCT 2024	WTE NOV 2024	WTE Change 2023	WTE Change 2024	WTE Change OCT 2024	WTE Change Dec 2022 to NOV 2024	WTE Change Dec 2019 to NOV 2024	% WTE Change Dec 2022 to NOV 2024	No. NOV 2024
<b>Total Primary Care</b>	<b>958</b>	<b>1,152</b>	<b>1,214</b>	<b>1,183</b>	<b>1,178</b>	<b>+63</b>	<b>-37</b>	<b>-5</b>	<b>+26</b>	<b>+220</b>	<b>+2.3%</b>	<b>1,397</b>
Consultants	3	2	2	2	2	0	0	+0	0	-1	-12.5%	2
Registrars	19	30	35	40	41	+5	+6	+1	+12	+22	+39.6%	42
SHO/ Interns	5		1	1	1	+1	+0	+0	+1	-4	-100.0%	1
Medical/ Dental, other	54	59	56	58	56	-2	-1	-2	-3	+1	-5.1%	78
<b>Medical &amp; Dental</b>	<b>81</b>	<b>90</b>	<b>94</b>	<b>101</b>	<b>100</b>	<b>+4</b>	<b>+5</b>	<b>-1</b>	<b>+9</b>	<b>+18</b>	<b>+10.5%</b>	<b>123</b>
Nurse/ Midwife Manager	25	47	51	50	50	+4	-1	0	+3	+25	+5.9%	56
Nurse/ Midwife Specialist & AN/MP	6	25	45	42	43	+19	-2	+1	+17	+37	+68.4%	49
Staff Nurse/ Staff Midwife	67	117	127	110	111	+10	-16	+1	-7	+44	-5.6%	139
Public Health Nurse	166	154	151	156	155	-3	+4	-1	+1	-11	+0.6%	189
Post-registration Nurse/ Midwife Student	5	4	9	12	13	+5	+4	+1	+9	+8	+230.8%	13
Nursing/ Midwifery Student	5	4	9	12	13	+5	+4	+1	+9	+8	+230.8%	13
Nursing/ Midwifery other	1									-1	-100.0%	
<b>Nursing &amp; Midwifery</b>	<b>270</b>	<b>348</b>	<b>383</b>	<b>370</b>	<b>371</b>	<b>+35</b>	<b>-11</b>	<b>+1</b>	<b>+24</b>	<b>+101</b>	<b>+6.8%</b>	<b>446</b>
Dietitians	8	17	22	24	23	+5	+1	0	+6	+16	+37.1%	26
Occupational Therapists	52	72	76	76	75	+5	-2	-1	+3	+23	+4.1%	86
Orthoptists	1	1	2	2	2	+1	+0	+0	+1	+2	+102.0%	2
Physiotherapists	53	76	83	78	77	+7	-5	0	+2	+25	+2.3%	92
Podiatrists & Chiropodists	1	5	7	6	6	+1	-1	0	+1	+5	+10.1%	7
Speech & Language Therapists	72	72	76	72	70	+5	-7	-3	-2	-2	-2.9%	80
<b>Therapy Professions</b>	<b>185</b>	<b>243</b>	<b>266</b>	<b>258</b>	<b>253</b>	<b>+23</b>	<b>-13</b>	<b>-5</b>	<b>+11</b>	<b>+68</b>	<b>+4.3%</b>	<b>293</b>
Health Science/ Diagnostics	4	7	11	13	12	+4	+1	-1	+4	+8	+57.6%	12
Social Care	5	8	8	8	8	+0	0	+1	0	+3	-1.4%	9
Pharmacy	1		1	1	1	+1	+0	+0	+1	+0	-100.0%	1
Psychologists	46	34	44	51	51	+10	+7	+0	+17	+5	+49.7%	55
Social Workers	8	5	4	3	4	-1	-1	+1	-2	-5	-33.1%	4
H&SC, Other	18	19	18	18	18	-1	+0	+0	-1	0	-6.7%	20
<b>Health &amp; Social Care Professionals</b>	<b>268</b>	<b>318</b>	<b>353</b>	<b>352</b>	<b>347</b>	<b>+36</b>	<b>-6</b>	<b>-4</b>	<b>+30</b>	<b>+80</b>	<b>+9.3%</b>	<b>394</b>
Management (VIII & above)	25	18	13	10	9	-5	-4	-1	-9	-16	-48.9%	10
Administrative/ Supervisory (V to VII)	56	67	72	68	69	+5	-3	+1	+2	+12	+2.6%	71
Clerical (III & IV)	164	169	180	169	169	+12	-12	+0	+0	+5	+0.1%	193
<b>Management &amp; Administrative</b>	<b>245</b>	<b>254</b>	<b>265</b>	<b>247</b>	<b>247</b>	<b>+11</b>	<b>-18</b>	<b>+0</b>	<b>-7</b>	<b>+1</b>	<b>-2.8%</b>	<b>274</b>
Support	25	21	20	21	20	-1	+1	0	-1	-5	-3.8%	44
<b>General Support</b>	<b>25</b>	<b>21</b>	<b>20</b>	<b>21</b>	<b>20</b>	<b>-1</b>	<b>+1</b>	<b>0</b>	<b>-1</b>	<b>-5</b>	<b>-3.8%</b>	<b>44</b>
Health Care Assistants	15	57	41	34	34	-16	-7	0	-23	+18	-40.6%	44
Care, other	54	64	59	59	59	-6	+0	-1	-6	+5	-8.8%	72
<b>Patient &amp; Client Care</b>	<b>69</b>	<b>121</b>	<b>99</b>	<b>93</b>	<b>92</b>	<b>-22</b>	<b>-7</b>	<b>-1</b>	<b>-29</b>	<b>+23</b>	<b>-23.7%</b>	<b>116</b>

Disabilities NOV 2024	WTE DEC 2019	WTE DEC 2022	WTE DEC 2023	WTE OCT 2024	WTE NOV 2024	WTE Change 2023	WTE Change 2024	WTE Change OCT 2024	WTE Change Dec 2022 to NOV 2024	WTE Change Dec 2019 to NOV 2024	% WTE Change Dec 2022 to NOV 2024	No. NOV 2024
<b>Total Disabilities</b>	<b>1,488</b>	<b>1,656</b>	<b>1,713</b>	<b>1,757</b>	<b>1,782</b>	<b>+57</b>	<b>+69</b>	<b>+26</b>	<b>+126</b>	<b>+294</b>	<b>+7.6%</b>	<b>2,092</b>
Consultants	1	1	1	1	1	+0	0	+0	0	0	-12.4%	1
<b>Medical &amp; Dental</b>	<b>1</b>	<b>1</b>	<b>1</b>	<b>1</b>	<b>1</b>	<b>+0</b>	<b>0</b>	<b>+0</b>	<b>0</b>	<b>0</b>	<b>-12.4%</b>	<b>1</b>
Nurse/ Midwife Manager	66	74	78	80	83	+3	+6	+3	+9	+18	+11.6%	88
Nurse/ Midwife Specialist & AN/MP	2	4	4	4	4	+0	0	+0	0	+2	-3.1%	4
Staff Nurse/ Staff Midwife	170	169	163	163	173	-5	+10	+11	+5	+4	+2.8%	195
Public Health Nurse	5	10	9	10	10	-1	+1	0	+0	+5	+4.8%	12
Nursing/ Midwifery awaiting registration	2			2				-2		-2	-100.0%	
Pre-registration Nurse/ Midwife Intern		0	2	2	1	+2	-1	-1	+1	+1	+525.0%	2
Nursing/ Midwifery Student	2	0	2	4	1	+2	-1	-3	+1	-1	+525.0%	2
Nursing/ Midwifery other		1	1	2	1	+0	+0	-1	+0	+1	+1.2%	1
<b>Nursing &amp; Midwifery</b>	<b>244</b>	<b>258</b>	<b>256</b>	<b>262</b>	<b>272</b>	<b>-1</b>	<b>+16</b>	<b>+10</b>	<b>+15</b>	<b>+28</b>	<b>+5.7%</b>	<b>302</b>
Dietitians	2	2	3	3	3	+1	+0	+0	+1	+1	+51.5%	3
Occupational Therapists	21	22	22	25	24	+0	+2	0	+2	+3	+10.6%	27
Physiotherapists	14	12	10	12	12	-2	+2	+0	+1	-2	+4.9%	14
Speech & Language Therapists	24	23	24	25	25	+1	+1	+0	+3	+2	+11.1%	29
<b>Therapy Professions</b>	<b>61</b>	<b>59</b>	<b>59</b>	<b>65</b>	<b>65</b>	<b>+1</b>	<b>+6</b>	<b>+0</b>	<b>+6</b>	<b>+4</b>	<b>+11.1%</b>	<b>73</b>



Disabilities NOV 2024	WTE DEC 2019	WTE DEC 2022	WTE DEC 2023	WTE OCT 2024	WTE NOV 2024	WTE Change 2023	WTE Change 2024	WTE Change OCT 2024	WTE Change Dec 2022 to NOV 2024	WTE Change Dec 2019 to NOV 2024	% WTE Change Dec 2022 to NOV 2024	No. NOV 2024
<b>Total Disabilities</b>	1,488	1,656	1,713	1,757	1,782	+57	+69	+26	+126	+294	+7.6%	2,092
Social Care	154	161	165	157	160	+3	-5	+3	-2	+6	-1.0%	190
Psychologists	12	17	14	14	14	-3	+1	+0	-3	+2	-15.5%	17
Social Workers	21	20	24	28	31	+3	+7	+3	+11	+10	+52.2%	35
H&SC, Other	7	6	6	7	6	+0	0	0	+0	-1	+4.5%	8
<b>Health &amp; Social Care Professionals</b>	255	263	268	271	276	+5	+8	+5	+13	+21	+5.0%	323
Management (VIII & above)	11	19	19	18	18	0	-1	+0	-1	+7	-4.9%	18
Administrative/ Supervisory (V to VII)	36	55	64	67	66	+10	+2	-1	+11	+30	+21.0%	69
Clerical (III & IV)	61	74	86	79	80	+12	-6	+1	+6	+20	+8.6%	93
<b>Management &amp; Administrative</b>	108	147	169	164	164	+22	-5	+0	+17	+56	+11.5%	180
Support	15	8	5	5	5	-3	0	+0	-3	-10	-39.7%	7
Maintenance/ Technical	7	9	9	9	9	-1	+0	0	0	+2	-3.4%	11
<b>General Support</b>	23	17	14	14	14	-4	+0	0	-4	-9	-20.2%	18
Health Care Assistants	715	783	817	842	849	+35	+32	+7	+67	+134	+8.5%	1,021
Care, other	143	187	188	202	206	+0	+18	+3	+19	+63	+9.9%	247
<b>Patient &amp; Client Care</b>	858	970	1,005	1,045	1,055	+35	+50	+10	+85	+198	+8.8%	1,268

Older People NOV 2024	WTE DEC 2019	WTE DEC 2022	WTE DEC 2023	WTE OCT 2024	WTE NOV 2024	WTE Change 2023	WTE Change 2024	WTE Change OCT 2024	WTE Change Dec 2022 to NOV 2024	WTE Change Dec 2019 to NOV 2024	% WTE Change Dec 2022 to NOV 2024	No. NOV 2024
<b>Total Older People</b>	1,653	1,641	1,733	1,649	1,637	+92	-96	-12	-4	-16	-0.2%	1,977
Medical/ Dental, other	9	15	13	12	12	-1	-1	+1	-2	+4	-14.5%	16
<b>Medical &amp; Dental</b>	9	15	13	12	12	-1	-1	+1	-2	+4	-14.5%	16
Nurse/ Midwife Manager	83	76	99	92	92	+23	-7	+1	+16	+9	+20.7%	98
Nurse/ Midwife Specialist & AN/MP	2	12	18	16	16	+6	-1	0	+5	+14	+40.0%	17
Staff Nurse/ Staff Midwife	313	299	318	305	302	+19	-16	-3	+3	-12	+1.0%	349
Public Health Nurse	5	1	1	1	1	+0	+0	+0	+0	-4	+1.0%	1
Nursing/ Midwifery awaiting registration			2			+2	-2				-100.0%	
<b>Nursing/ Midwifery Student</b>			2			+2	-2				-100.0%	
<b>Nursing &amp; Midwifery</b>	403	388	437	414	411	+50	-26	-3	+23	+8	+6.0%	465
Dietitians	4	4	4	5	4	+0	+0	0	+0	+1	+3.0%	5
Occupational Therapists	13	11	15	15	16	+5	+0	+0	+5	+2	+44.3%	17
Physiotherapists	21	14	15	17	17	+1	+2	0	+3	-4	+18.9%	21
Podiatrists & Chiropodists	0									0	-100.0%	
Speech & Language Therapists	3	1	4	3	3	+2	0	+0	+2	+1	+175.0%	4
<b>Therapy Professions</b>	41	31	39	41	41	+8	+2	+0	+10	0	+31.8%	47
Pharmacy		1	1	1	1	0	0	+0	0	+1	-15.8%	1
Psychologists		1	2	1	2	+0	+0	+0	+0	+2	+5.6%	2
Social Workers	3	4	5	5	5	+1	0	+0	+1	+2	+21.7%	5
H&SC, Other		2	6	4	3	+4	-3	-1	+1	+3	+53.0%	3
<b>Health &amp; Social Care Professionals</b>	44	39	52	51	50	+13	-1	-1	+12	+6	+29.7%	58
Management (VIII & above)	4	11	11	12	12	+0	+1	+0	+1	+8	+10.4%	12
Administrative/ Supervisory (V to VII)	17	16	16	18	18	0	+2	+1	+2	+2	+12.5%	19
Clerical (III & IV)	31	60	61	55	56	+0	-5	+1	-4	+25	-7.0%	61
<b>Management &amp; Administrative</b>	52	87	88	85	86	+0	-1	+2	-1	+35	-1.2%	92
Support	91	75	62	55	55	-13	-7	-1	-20	-36	-27.3%	66
Maintenance/ Technical	5	4	4	4	4	0	+0	+0	0	-1	-4.1%	5
<b>General Support</b>	96	79	66	59	59	-13	-7	-1	-21	-38	-26.0%	71
Health Care Assistants	1,040	1,016	1,049	1,003	995	+34	-54	-8	-20	-45	-2.0%	1,249
Care, other	9	18	28	25	23	+10	-5	-2	+6	+15	+31.3%	26
<b>Patient &amp; Client Care</b>	1,049	1,034	1,078	1,029	1,019	+44	-59	-10	-15	-30	-1.4%	1,275

CHO Operations NOV 2024	WTE DEC 2019	WTE DEC 2022	WTE DEC 2023	WTE OCT 2024	WTE NOV 2024	WTE Change 2023	WTE Change 2024	WTE Change OCT 2024	WTE Change Dec 2022 to NOV 2024	WTE Change Dec 2019 to NOV 2024	% WTE Change Dec 2022 to NOV 2024	No. NOV 2024
-------------------------	--------------	--------------	--------------	--------------	--------------	-----------------	-----------------	---------------------	---------------------------------	---------------------------------	-----------------------------------	--------------



Total CHO Operations	94	106	103	101	+12	-5	-3	+7	+101	+7.7%	106
Nurse/ Midwife Manager	2	1	1	1	-1	+0	+0	-1	+1	-49.5%	1
Nurse/ Midwife Specialist & AN/MP	3				-3			-3		-100.0%	
Nursing & Midwifery	5	1	1	1	-4	+0	+0	-4	+1	-78.8%	1
Pharmacy	2				-2			-2		-100.0%	
Social Workers	11	12	14	14	+1	+2	-1	+2	+14	+21.5%	14
Health & Social Care Professionals	13	12	14	14	-1	+2	-1	+1	+14	+4.0%	14
Management (VIII & above)	17	18	14	14	+1	-4	0	-3	+14	-16.8%	14
Administrative/ Supervisory (V to VII)	41	56	53	52	+15	-4	-2	+11	+52	+27.5%	55
Clerical (III & IV)	17	18	19	19	+1	+1	0	+2	+19	+12.3%	20
Management & Administrative	74	91	86	84	+17	-7	-2	+10	+84	+14.1%	89
Maintenance/ Technical	2	2	2	2	+0	+0	+0	+0	+2	+1.0%	2
General Support	2	2	2	2	+0	+0	+0	+0	+2	+1.0%	2

# Employment Report by Care Group (HSE Only) NOV 2024

CHO 5 NOV 2024

## Community Health & Wellbeing

Community Health & Wellbeing HSE Only NOV 2024	WTE DEC 2019	WTE DEC 2022	WTE DEC 2023	WTE OCT 2024	WTE NOV 2024	WTE Change 2023	WTE Change 2024	WTE Change OCT 2024	WTE Change Dec 2022 to NOV 2024	WTE Change Dec 2019 to NOV 2024	% WTE Change Dec 2022 to NOV 2024	No. NOV 2024
<b>Overall</b>		<b>38</b>	<b>49</b>	<b>50</b>	<b>48</b>	<b>+11</b>	<b>0</b>	<b>-1</b>	<b>+10</b>	<b>+48</b>	<b>+26.5%</b>	<b>54</b>
Nurse/ Midwife Manager			2	1	1	+2	-1	0	+1	+1	-100.0%	1
Nurse/ Midwife Specialist & AN/MP			3	6	6	+3	+3	0	+6	+6	-100.0%	7
<b>Nursing &amp; Midwifery</b>			<b>5</b>	<b>7</b>	<b>7</b>	<b>+5</b>	<b>+2</b>	<b>0</b>	<b>+7</b>	<b>+7</b>	<b>-100.0%</b>	<b>8</b>
Dietitians		3	2	2	2	+2	0	0	-1	+2	-7.5%	2
Therapy Professions		3	2	2	2	-1	0	+0	-1	+2	-37.3%	2
Pharmacy				1	1		+1	+0	+1	+1	-100.0%	1
<b>Health &amp; Social Care Professionals</b>		<b>3</b>	<b>2</b>	<b>3</b>	<b>3</b>	<b>-1</b>	<b>+1</b>	<b>+0</b>	<b>0</b>	<b>+3</b>	<b>-4.7%</b>	<b>3</b>
Management (VIII & above)		2	4	4	5	+2	+1	+0	+3	+5	+145.9%	5
Administrative/ Supervisory (V to VII)		14	7	6	6	-7	-1	0	-8	+6	-58.4%	6
Clerical (III & IV)		4	6	7	6	+1	+0	-1	+2	+6	+35.1%	7
<b>Management &amp; Administrative</b>		<b>20</b>	<b>16</b>	<b>17</b>	<b>16</b>	<b>-4</b>	<b>0</b>	<b>-1</b>	<b>-4</b>	<b>+16</b>	<b>-19.1%</b>	<b>18</b>
Care, other		15	25	23	23	+10	-3	0	+7	+23	+47.4%	25
<b>Patient &amp; Client Care</b>		<b>15</b>	<b>25</b>	<b>23</b>	<b>23</b>	<b>+10</b>	<b>-3</b>	<b>0</b>	<b>+7</b>	<b>+23</b>	<b>+47.4%</b>	<b>25</b>



## Mental Health

Mental Health HSE Only NOV 2024	WTE DEC 2019	WTE DEC 2022	WTE DEC 2023	WTE OCT 2024	WTE NOV 2024	WTE Change 2023	WTE Change 2024	WTE Change OCT 2024	WTE Change Dec 2022 to NOV 2024	WTE Change Dec 2019 to NOV 2024	% WTE Change Dec 2022 to NOV 2024	No. NOV 2024
<b>Overall</b>	<b>1,177</b>	<b>1,224</b>	<b>1,325</b>	<b>1,311</b>	<b>1,309</b>	<b>+101</b>	<b>-16</b>	<b>-1</b>	<b>+85</b>	<b>+132</b>	<b>+6.9%</b>	<b>1,441</b>
Consultants	26	33	36	36	36	+3	0	0	+2	+10	+7.3%	38
Registrars	10	12	18	18	17	+6	0	0	+6	+7	+46.9%	18
SHO/ Interns	32	32	34	38	38	+1	+4	0	+5	+6	+16.0%	41
Medical/ Dental, other	2	2	2	2	2	+0	+0	+0	+0	+0	+2.6%	2
<b>Medical &amp; Dental</b>	<b>70</b>	<b>80</b>	<b>90</b>	<b>93</b>	<b>93</b>	<b>+10</b>	<b>+3</b>	<b>-1</b>	<b>+13</b>	<b>+22</b>	<b>+16.6%</b>	<b>99</b>
Nurse/ Midwife Manager	171	175	155	152	152	-21	-2	+0	-23	-19	-13.0%	160
Nurse/ Midwife Specialist & AN/MP	43	68	91	85	86	+23	-5	+1	+18	+43	+26.3%	91
Staff Nurse/ Staff Midwife	412	398	393	406	421	-5	+28	+15	+23	+9	+5.7%	470
<i>Nursing/ Midwifery awaiting registration</i>		6	19	18	5	+5	-14	-14	-1	+5	-73.4%	6
<i>Pre-registration Nurse/ Midwife Intern</i>	1	1	1	3		-1	-1	-1	-1	-1	-100.0%	
Nursing/ Midwifery Student	1	7	20	21	5	+14	-15	-16	-2	+4	-24.0%	6
Nursing/ Midwifery other	4	4	5	4	4	+1	-1	0	+0	+0	+11.7%	4
<b>Nursing &amp; Midwifery</b>	<b>631</b>	<b>651</b>	<b>663</b>	<b>668</b>	<b>668</b>	<b>+12</b>	<b>+4</b>	<b>0</b>	<b>+17</b>	<b>+37</b>	<b>+2.6%</b>	<b>731</b>
<i>Dietitians</i>	2					-2				-2		
<i>Occupational Therapists</i>	32	30	28	30	29	-4	+0	+0	-1	-4	+1.5%	34
<i>Speech &amp; Language Therapists</i>	4	4	4	4	4	0	+0	+0	+0	0	+1.9%	4
Therapy Professions	38	34	32	34	33	-2	+0	-1	-1	-5	-3.1%	38
Social Care	5	4	4	5	4	+1	0	-1	+0	-1	+8.0%	5
Psychologists	21	27	33	32	32	+6	-1	+0	+5	+11	+19.8%	38
Social Workers	28	29	34	31	31	+5	-3	+1	+2	+3	+7.4%	34
H&SC, Other	9	23	21	19	19	-2	-2	0	-4	+10	-17.7%	20
<b>Health &amp; Social Care Professionals</b>	<b>101</b>	<b>117</b>	<b>125</b>	<b>120</b>	<b>119</b>	<b>+8</b>	<b>-5</b>	<b>-1</b>	<b>+3</b>	<b>+18</b>	<b>+2.3%</b>	<b>135</b>
Management (VIII & above)	4	6	5	5	4	-1	-1	-1	-1	+0	-21.8%	5
Administrative/ Supervisory (V to VII)	21	23	30	29	30	+7	+0	+2	+7	+9	+29.8%	32
Clerical (III & IV)	74	74	99	93	93	+25	-6	+0	+18	+19	+24.8%	101
<b>Management &amp; Administrative</b>	<b>99</b>	<b>104</b>	<b>134</b>	<b>126</b>	<b>128</b>	<b>+31</b>	<b>-6</b>	<b>+1</b>	<b>+24</b>	<b>+29</b>	<b>+23.4%</b>	<b>138</b>
Support	171	175	183	175	176	+9	-8	+0	+1	+4	+0.6%	198
Maintenance/ Technical	19	14	13	14	14	-1	+1	0	+0	-5	+1.4%	15
<b>General Support</b>	<b>190</b>	<b>189</b>	<b>197</b>	<b>189</b>	<b>190</b>	<b>+8</b>	<b>-7</b>	<b>+0</b>	<b>+1</b>	<b>-1</b>	<b>+0.7%</b>	<b>213</b>
Health Care Assistants	73	73	102	97	96	+28	-6	-1	+23	+23	+31.0%	103
Care, other	13	12	15	17	16	+3	+1	0	+4	+3	+36.8%	22
<b>Patient &amp; Client Care</b>	<b>85</b>	<b>85</b>	<b>117</b>	<b>113</b>	<b>112</b>	<b>+32</b>	<b>-5</b>	<b>-1</b>	<b>+27</b>	<b>+27</b>	<b>+31.8%</b>	<b>125</b>

## Primary Care

Primary Care HSE Only NOV 2024	WTE DEC 2019	WTE DEC 2022	WTE DEC 2023	WTE OCT 2024	WTE NOV 2024	WTE Change 2023	WTE Change 2024	WTE Change OCT 2024	WTE Change Dec 2022 to NOV 2024	WTE Change Dec 2019 to NOV 2024	% WTE Change Dec 2022 to NOV 2024	No. NOV 2024
<b>Overall</b>	<b>958</b>	<b>1,152</b>	<b>1,214</b>	<b>1,183</b>	<b>1,178</b>	<b>+63</b>	<b>-37</b>	<b>-5</b>	<b>+26</b>	<b>+220</b>	<b>+2.3%</b>	<b>1,397</b>
Consultants	3	2	2	2	2	0	0	+0	0	-1	-12.5%	2
Registrars	19	30	35	40	41	+5	+6	+1	+12	+22	+39.6%	42
SHO/ Interns	5		1	1	1	+1	+0	+0	+1	-4	-100.0%	1
Medical/ Dental, other	54	59	56	58	56	-2	-1	-2	-3	+1	-5.1%	78
<b>Medical &amp; Dental</b>	<b>81</b>	<b>90</b>	<b>94</b>	<b>101</b>	<b>100</b>	<b>+4</b>	<b>+5</b>	<b>-1</b>	<b>+9</b>	<b>+18</b>	<b>+10.5%</b>	<b>123</b>
Nurse/ Midwife Manager	25	47	51	50	50	+4	-1	0	+3	+25	+5.9%	56
Nurse/ Midwife Specialist & AN/MP	6	25	45	42	43	+19	-2	+1	+17	+37	+68.4%	49
Staff Nurse/ Staff Midwife	67	117	127	110	111	+10	-16	+1	-7	+44	-5.6%	139
Public Health Nurse	166	154	151	156	155	-3	+4	-1	+1	-11	+0.6%	189
<i>Post-registration Nurse/ Midwife Student</i>	5	4	9	12	13	+8	+4	+4	+9	+8	+44.4%	13
Nursing/ Midwifery Student	5	4	9	12	13	+5	+4	+1	+9	+8	+230.8%	13
Nursing/ Midwifery other	1									-1	-100.0%	
<b>Nursing &amp; Midwifery</b>	<b>270</b>	<b>348</b>	<b>383</b>	<b>370</b>	<b>371</b>	<b>+35</b>	<b>-11</b>	<b>+1</b>	<b>+24</b>	<b>+101</b>	<b>+6.8%</b>	<b>446</b>
<i>Dietitians</i>	8	17	22	24	23	+16	+1	+1	+6	+16	+5.9%	26
<i>Occupational Therapists</i>	52	72	76	76	75	+23	-2	-2	+3	+23	-2.0%	86
<i>Orthoptists</i>	1	1	2	2	2	+2	+0	+0	+1	+2	+0.0%	2
<i>Physiotherapists</i>	53	76	83	78	77	+25	-5	-5	+2	+25	-6.6%	92
<i>Podiatrists &amp; Chiropodists</i>	1	5	7	6	6	+5	-1	-1	+1	+5	-7.7%	7
<i>Speech &amp; Language Therapists</i>	72	72	76	72	70	-2	-7	-7	-2	-2	-8.7%	80
Therapy Professions	185	243	266	258	253	+23	-13	-5	+11	+68	+4.3%	293
Health Science/ Diagnostics	4	7	11	13	12	+4	+1	-1	+4	+8	+57.6%	12
Social Care	5	8	8	8	8	+0	0	+1	0	+3	-1.4%	9
Pharmacy	1		1	1	1	+1	+0	+0	+1	+0	-100.0%	1
Psychologists	46	34	44	51	51	+10	+7	+0	+17	+5	+49.7%	55
Social Workers	8	5	4	3	4	-1	-1	+1	-2	-5	-33.1%	4
H&SC, Other	18	19	18	18	18	-1	+0	+0	-1	0	-6.7%	20
<b>Health &amp; Social Care Professionals</b>	<b>268</b>	<b>318</b>	<b>353</b>	<b>352</b>	<b>347</b>	<b>+36</b>	<b>-6</b>	<b>-4</b>	<b>+30</b>	<b>+80</b>	<b>+9.3%</b>	<b>394</b>
Management (VIII & above)	25	18	13	10	9	-5	-4	-1	-9	-16	-48.9%	10
Administrative/ Supervisory (V to VII)	56	67	72	68	69	+5	-3	+1	+2	+12	+2.6%	71
Clerical (III & IV)	164	169	180	169	169	+12	-12	+0	+0	+5	+0.1%	193
<b>Management &amp; Administrative</b>	<b>245</b>	<b>254</b>	<b>265</b>	<b>247</b>	<b>247</b>	<b>+11</b>	<b>-18</b>	<b>+0</b>	<b>-7</b>	<b>+1</b>	<b>-2.8%</b>	<b>274</b>
Support	25	21	20	21	20	-1	+1	0	-1	-5	-3.8%	44
<b>General Support</b>	<b>25</b>	<b>21</b>	<b>20</b>	<b>21</b>	<b>20</b>	<b>-1</b>	<b>+1</b>	<b>0</b>	<b>-1</b>	<b>-5</b>	<b>-3.8%</b>	<b>44</b>
Health Care Assistants	15	57	41	34	34	-16	-7	0	-23	+18	-40.6%	44
Care, other	54	64	59	59	59	-6	+0	-1	-6	+5	-8.8%	72
<b>Patient &amp; Client Care</b>	<b>69</b>	<b>121</b>	<b>99</b>	<b>93</b>	<b>92</b>	<b>-22</b>	<b>-7</b>	<b>-1</b>	<b>-29</b>	<b>+23</b>	<b>-23.7%</b>	<b>116</b>



## Disabilities

Disabilities HSE Only NOV 2024	WTE DEC 2019	WTE DEC 2022	WTE DEC 2023	WTE OCT 2024	WTE NOV 2024	WTE Change 2023	WTE Change 2024	WTE Change OCT 2024	WTE Change Dec 2022 to NOV 2024	WTE Change Dec 2019 to NOV 2024	% WTE Change Dec 2022 to NOV 2024	No. NOV 2024
<b>Overall</b>	<b>364</b>	<b>422</b>	<b>452</b>	<b>452</b>	<b>459</b>	<b>+29</b>	<b>+7</b>	<b>+7</b>	<b>+37</b>	<b>+95</b>	<b>+8.7%</b>	<b>543</b>
Nurse/ Midwife Manager	19	26	30	31	32	+4	+2	+1	+6	+13	+22.2%	33
Nurse/ Midwife Specialist & AN/MP	2	4	4	4	4	+0	0	+0	0	+2	-3.1%	4
Staff Nurse/ Staff Midwife	70	65	72	66	71	+7	-1	+5	+6	+1	+10.0%	78
Public Health Nurse	5	10	9	10	10	-1	+1	0	+0	+5	+4.8%	12
<i>Nursing/ Midwifery awaiting registration</i>	2			2		-2				-2		
<i>Pre-registration Nurse/ Midwife Intern</i>		0		1					0			
Nursing/ Midwifery Student	2	0		3		0		-3	0	-2	-100.0%	
Nursing/ Midwifery other		1	1	2	1	+0	+0	-1	+0	+1	+1.2%	1
<b>Nursing &amp; Midwifery</b>	<b>98</b>	<b>106</b>	<b>116</b>	<b>116</b>	<b>118</b>	<b>+10</b>	<b>+2</b>	<b>+2</b>	<b>+12</b>	<b>+20</b>	<b>+11.8%</b>	<b>128</b>
<i>Dietitians</i>	2	2	3	3	3	+1	+0	+0	+1	+1	+0.0%	3
<i>Occupational Therapists</i>	21	22	22	25	24	+3	+2	+2	+2	+3	+10.5%	27
<i>Physiotherapists</i>	14	12	10	12	12	-2	+2	+2	+1	-2	+22.1%	14
<i>Speech &amp; Language Therapists</i>	21	22	23	22	23	+1	0	0	+1	+1	-0.7%	26
Therapy Professions	58	58	58	62	62	+0	+4	+0	+5	+4	+8.1%	70
Social Care	16	18	24	23	24	+6	+0	+1	+6	+8	+32.6%	27
Psychologists	7	12	9	9	9	-3	+0	+0	-3	+2	-24.0%	11
Social Workers	10	12	17	21	23	+5	+6	+2	+12	+13	+100.0%	26
<b>Health &amp; Social Care Professionals</b>	<b>92</b>	<b>99</b>	<b>107</b>	<b>114</b>	<b>118</b>	<b>+8</b>	<b>+11</b>	<b>+4</b>	<b>+19</b>	<b>+26</b>	<b>+19.5%</b>	<b>134</b>
Management (VIII & above)	4	7	7	7	7	+0	+0	+0	+0	+3	+1.0%	7
Administrative/ Supervisory (V to VII)	14	30	33	31	29	+3	-4	-1	0	+15	-1.1%	31
Clerical (III & IV)	14	26	36	33	34	+9	-2	+0	+7	+19	+26.7%	40
<b>Management &amp; Administrative</b>	<b>32</b>	<b>63</b>	<b>76</b>	<b>71</b>	<b>70</b>	<b>+13</b>	<b>-6</b>	<b>-1</b>	<b>+7</b>	<b>+38</b>	<b>+10.8%</b>	<b>78</b>
Support	3	1				-1			-1	-3	-100.0%	
<b>General Support</b>	<b>3</b>	<b>1</b>				<b>-1</b>			<b>-1</b>	<b>-3</b>	<b>-100.0%</b>	
Health Care Assistants	137	135	134	132	132	-2	-1	0	-3	-5	-2.4%	180
Care, other	3	19	20	19	21	+1	+1	+2	+2	+18	+11.1%	23
<b>Patient &amp; Client Care</b>	<b>140</b>	<b>154</b>	<b>154</b>	<b>152</b>	<b>153</b>	<b>-1</b>	<b>0</b>	<b>+1</b>	<b>-1</b>	<b>+13</b>	<b>-0.8%</b>	<b>203</b>

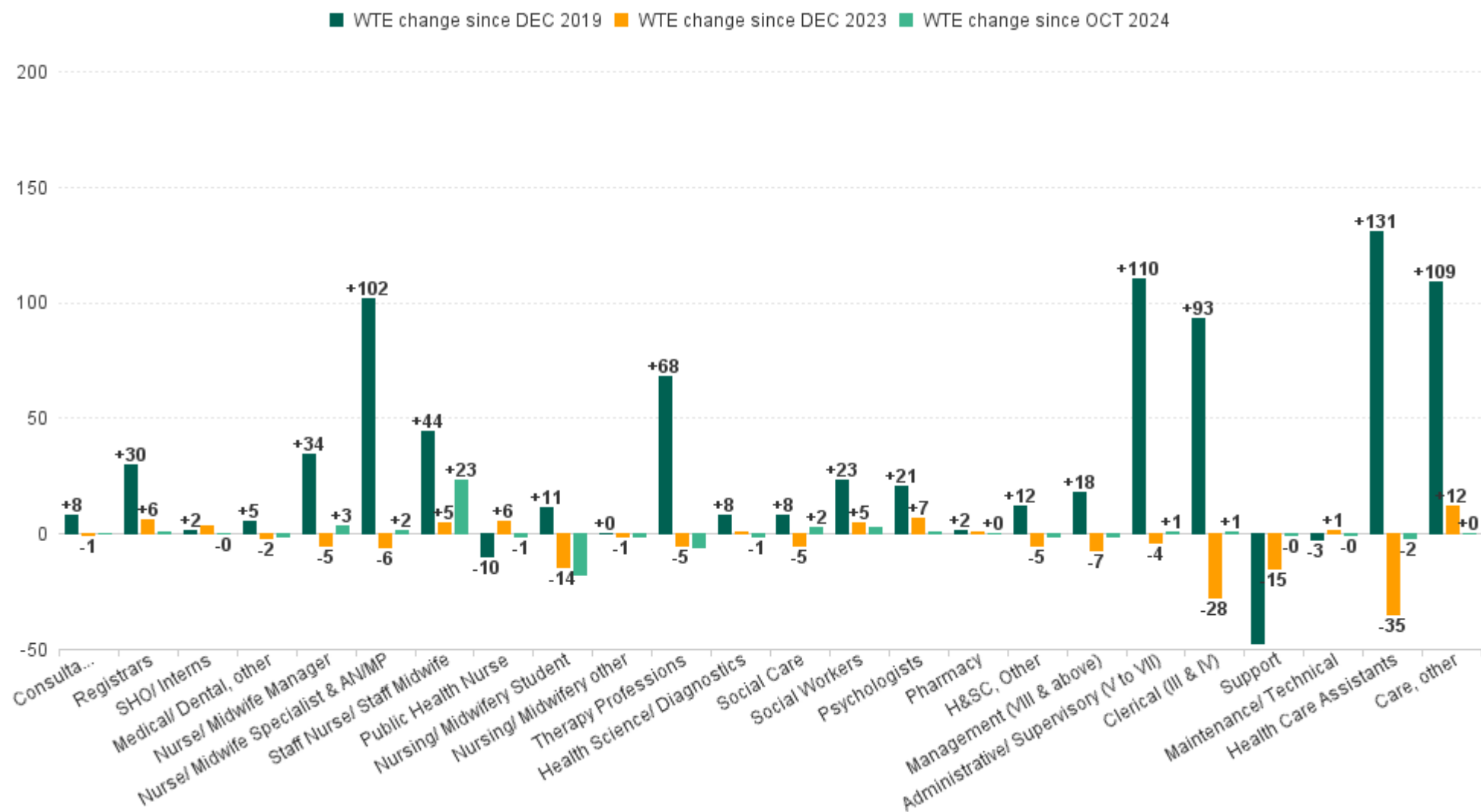
## Older People

Older People HSE Only NOV 2024	WTE DEC 2019	WTE DEC 2022	WTE DEC 2023	WTE OCT 2024	WTE NOV 2024	WTE Change 2023	WTE Change 2024	WTE Change OCT 2024	WTE Change Dec 2022 to NOV 2024	WTE Change Dec 2019 to NOV 2024	% WTE Change Dec 2022 to NOV 2024	No. NOV 2024
<b>Overall</b>	<b>1,653</b>	<b>1,641</b>	<b>1,733</b>	<b>1,649</b>	<b>1,637</b>	<b>+92</b>	<b>-96</b>	<b>-12</b>	<b>-4</b>	<b>-16</b>	<b>-0.2%</b>	<b>1,977</b>
Medical/ Dental, other	9	15	13	12	12	-1	-1	+1	-2	+4	-14.5%	16
<b>Medical &amp; Dental</b>	<b>9</b>	<b>15</b>	<b>13</b>	<b>12</b>	<b>12</b>	<b>-1</b>	<b>-1</b>	<b>+1</b>	<b>-2</b>	<b>+4</b>	<b>-14.5%</b>	<b>16</b>
Nurse/ Midwife Manager	83	76	99	92	92	+23	-7	+1	+16	+9	+20.7%	98
Nurse/ Midwife Specialist & AN/MP	2	12	18	16	16	+6	-1	0	+5	+14	+40.0%	17
Staff Nurse/ Staff Midwife	313	299	318	305	302	+19	-16	-3	+3	-12	+1.0%	349
Public Health Nurse	5	1	1	1	1	+0	+0	+0	+0	-4	+1.0%	1
<i>Nursing/ Midwifery awaiting registration</i>			2				-2	-2			-100.0%	
Nursing/ Midwifery Student			2			+2	-2				-100.0%	
<b>Nursing &amp; Midwifery</b>	<b>403</b>	<b>388</b>	<b>437</b>	<b>414</b>	<b>411</b>	<b>+50</b>	<b>-26</b>	<b>-3</b>	<b>+23</b>	<b>+8</b>	<b>+6.0%</b>	<b>465</b>
<i>Dietitians</i>	4	4	4	5	4	+1	+0	+0	+0	+1	+2.1%	5
<i>Occupational Therapists</i>	13	11	15	15	16	+2	+0	+0	+5	+2	+1.3%	17
<i>Physiotherapists</i>	21	14	15	17	17	-4	+2	+2	+3	-4	+11.5%	21
<i>Podiatrists &amp; Chiropodists</i>	0					0				0		
<i>Speech &amp; Language Therapists</i>	3	1	4	3	3	+1	0	0	+2	+1	-2.6%	4
Therapy Professions	41	31	39	41	41	+8	+2	+0	+10	0	+31.8%	47
Pharmacy		1	1	1	1	0	0	+0	0	+1	-15.8%	1
Psychologists		1	2	1	2	+0	+0	+0	+0	+2	+5.6%	2
Social Workers	3	4	5	5	5	+1	0	+0	+1	+2	+21.7%	5
H&SC, Other		2	6	4	3	+4	-3	-1	+1	+3	+53.0%	3
<b>Health &amp; Social Care Professionals</b>	<b>44</b>	<b>39</b>	<b>52</b>	<b>51</b>	<b>50</b>	<b>+13</b>	<b>-1</b>	<b>-1</b>	<b>+12</b>	<b>+6</b>	<b>+29.7%</b>	<b>58</b>
Management (VIII & above)	4	11	11	12	12	+0	+1	+0	+1	+8	+10.4%	12
Administrative/ Supervisory (V to VII)	17	16	16	18	18	0	+2	+1	+2	+2	+12.5%	19
Clerical (III & IV)	31	60	61	55	56	+0	-5	+1	-4	+25	-7.0%	61
<b>Management &amp; Administrative</b>	<b>52</b>	<b>87</b>	<b>88</b>	<b>85</b>	<b>86</b>	<b>+0</b>	<b>-1</b>	<b>+2</b>	<b>-1</b>	<b>+35</b>	<b>-1.2%</b>	<b>92</b>
Support	91	75	62	55	55	-13	-7	-1	-20	-36	-27.3%	66
Maintenance/ Technical	5	4	4	4	4	0	+0	+0	0	-1	-4.1%	5
<b>General Support</b>	<b>96</b>	<b>79</b>	<b>66</b>	<b>59</b>	<b>59</b>	<b>-13</b>	<b>-7</b>	<b>-1</b>	<b>-21</b>	<b>-38</b>	<b>-26.0%</b>	<b>71</b>
Health Care Assistants	1,040	1,016	1,049	1,003	995	+34	-54	-8	-20	-45	-2.0%	1,249
Care, other	9	18	28	25	23	+10	-5	-2	+6	+15	+31.3%	26
<b>Patient &amp; Client Care</b>	<b>1,049</b>	<b>1,034</b>	<b>1,078</b>	<b>1,029</b>	<b>1,019</b>	<b>+44</b>	<b>-59</b>	<b>-10</b>	<b>-15</b>	<b>-30</b>	<b>-1.4%</b>	<b>1,275</b>

## CHO Operations

CHO Operations HSE Only NOV 2024	WTE DEC 2019	WTE DEC 2022	WTE DEC 2023	WTE OCT 2024	WTE NOV 2024	WTE Change 2023	WTE Change 2024	WTE Change OCT 2024	WTE Change Dec 2022 to NOV 2024	WTE Change Dec 2019 to NOV 2024	% WTE Change Dec 2022 to NOV 2024	No. NOV 2024
<b>Overall</b>		<b>94</b>	<b>106</b>	<b>103</b>	<b>101</b>	<b>+12</b>	<b>-5</b>	<b>-3</b>	<b>+7</b>	<b>+101</b>	<b>+7.7%</b>	<b>106</b>
Nurse/ Midwife Manager		2	1	1	1	-1	+0	+0	-1	+1	-49.5%	1
Nurse/ Midwife Specialist & AN/MP		3				-3			-3		-100.0%	
<b>Nursing &amp; Midwifery</b>		<b>5</b>	<b>1</b>	<b>1</b>	<b>1</b>	<b>-4</b>	<b>+0</b>	<b>+0</b>	<b>-4</b>	<b>+1</b>	<b>-78.8%</b>	<b>1</b>
Pharmacy		2				-2			-2		-100.0%	
Social Workers		11	12	14	14	+1	+2	-1	+2	+14	+21.5%	14
<b>Health &amp; Social Care Professionals</b>		<b>13</b>	<b>12</b>	<b>14</b>	<b>14</b>	<b>-1</b>	<b>+2</b>	<b>-1</b>	<b>+1</b>	<b>+14</b>	<b>+4.0%</b>	<b>14</b>
Management (VIII & above)		17	18	14	14	+1	-4	0	-3	+14	-16.8%	14
Administrative/ Supervisory (V to VII)		41	56	53	52	+15	-4	-2	+11	+52	+27.5%	55
Clerical (III & IV)		17	18	19	19	+1	+1	0	+2	+19	+12.3%	20
<b>Management &amp; Administrative</b>		<b>74</b>	<b>91</b>	<b>86</b>	<b>84</b>	<b>+17</b>	<b>-7</b>	<b>-2</b>	<b>+10</b>	<b>+84</b>	<b>+14.1%</b>	<b>89</b>
Maintenance/ Technical		2	2	2	2	+0	+0	+0	+0	+2	+1.0%	2
<b>General Support</b>		<b>2</b>	<b>2</b>	<b>2</b>	<b>2</b>	<b>+0</b>	<b>+0</b>	<b>+0</b>	<b>+0</b>	<b>+2</b>	<b>+1.0%</b>	<b>2</b>

## WTE Change by Staff Group



Employment Report by WTE, Headcount, Gender, Full-Time / Part-Time etc. NOV 2024

CHO 5 NOV 2024

NOV 2024	WTE NOV 2024	No. NOV 2024	WTE : No	Number Male %	Number Female %	Male WTE : No.	Female WTE : No.	Perm Count %	Perm Count Male %	Perm Count Female %	Fulltime Count %	Part time Count %	FT Count Male %	FT Count Female %
<b>Total</b>	<b>6,056</b>	<b>7,067</b>	<b>1:0.9</b>	<b>17.60%</b>	<b>82.40%</b>	<b>1:0.9</b>	<b>1:0.8</b>	<b>91.59%</b>	<b>15.04%</b>	<b>76.55%</b>	<b>60.56%</b>	<b>39.44%</b>	<b>75.48%</b>	<b>57.38%</b>
Consultant Dentistry	1	1	1:1		100.00%	1:	1:1	100.00%		100.00%		100.00%		100.00%
Consultant Medicine	1	1	1:0.8		100.00%	1:	1:0.8	100.00%		100.00%	100.00%			100.00%
Consultant Psychiatry	37	39	1:0.9	53.85%	46.15%	1:1	1:0.9	66.67%	38.46%	28.21%	97.44%	2.56%	100.00%	94.44%
Dentists	34	43	1:0.8	23.26%	76.74%	1:0.8	1:0.8	97.67%	20.93%	76.74%	48.84%	51.16%	60.00%	45.45%
Interns	2	2	1:1	50.00%	50.00%	1:1	1:1				100.00%		100.00%	100.00%
Other Medical	36	53	1:0.7	43.40%	56.60%	1:0.5	1:0.8	75.47%	28.30%	47.17%	52.83%	47.17%	39.13%	63.33%
Registrar	53	54	1:1	46.30%	53.70%	1:1	1:1	3.70%	1.85%	1.85%	100.00%		100.00%	100.00%
Senior House Officer	37	40	1:0.9	40.00%	60.00%	1:0.9	1:0.9				97.50%	2.50%	100.00%	95.83%
Senior Registrar	6	6	1:1	50.00%	50.00%	1:1	1:1				100.00%		100.00%	100.00%
<b>Medical &amp; Dental</b>	<b>206</b>	<b>239</b>	<b>1:0.9</b>	<b>41.42%</b>	<b>58.58%</b>	<b>1:0.9</b>	<b>1:0.9</b>	<b>46.86%</b>	<b>16.74%</b>	<b>30.13%</b>	<b>79.08%</b>	<b>20.92%</b>	<b>81.82%</b>	<b>77.14%</b>
Advanced Nurse/ Midwife Practitioner	22	23	1:1	13.04%	86.96%	1:1	1:0.9	100.00%	13.04%	86.96%	95.65%	4.35%	100.00%	95.00%
Adv. Nurse/ Midwife, Candidate	4	4	1:1	50.00%	50.00%	1:1	1:0.9	100.00%	50.00%	50.00%	100.00%		100.00%	100.00%
Clinical Nurse/ Midwife Manager 1	70	77	1:0.9	10.39%	89.61%	1:1	1:0.9	98.70%	10.39%	88.31%	77.92%	22.08%	100.00%	75.36%
Clinical Nurse/ Midwife Manager 2	183	194	1:0.9	24.74%	75.26%	1:1	1:0.9	96.91%	24.23%	72.68%	88.66%	11.34%	100.00%	84.93%
Clinical Nurse/ Midwife Manager 3	34	35	1:1	11.43%	88.57%	1:1	1:1	94.29%	11.43%	82.86%	97.14%	2.86%	100.00%	96.77%
Clinical Nurse/ Midwife Specialist	129	141	1:0.9	9.93%	90.07%	1:1	1:0.9	99.29%	9.22%	90.07%	82.27%	17.73%	100.00%	80.31%
Director Nursing/Midwifery, Assistant	70	75	1:0.9	12.00%	88.00%	1:1	1:0.9	97.33%	10.67%	86.67%	80.00%	20.00%	100.00%	77.27%
Director of Nursing/Midwifery	22	23	1:1	4.35%	95.65%	1:1	1:1	100.00%	4.35%	95.65%	91.30%	8.70%	100.00%	90.91%
Nursing Education/Clinical	5	5	1:1	20.00%	80.00%	1:1	1:1	100.00%	20.00%	80.00%	80.00%	20.00%	100.00%	75.00%
Nursing/ Midwifery awaiting registration	5	6	1:0.8	33.33%	66.67%	1:0.8	1:0.9				100.00%		100.00%	100.00%
Post-registration Nurse/ Midwife Student	13	13	1:1	7.69%	92.31%	1:1	1:1	53.85%	7.69%	46.15%	100.00%		100.00%	100.00%
Pre-registration Nurse/ Midwife Intern	1	2	1:0.5		100.00%	1:	1:0.5				50.00%	50.00%		50.00%
Public Health Nurse	166	202	1:0.8	1.49%	98.51%	1:0.9	1:0.8	100.00%	1.49%	98.51%	59.90%	40.10%	66.67%	59.80%
Staff Midwives	1	1	1:0.6		100.00%	1:	1:0.6	100.00%		100.00%		100.00%		
Staff Nurse [Intellectual Disability]	119	132	1:0.9	11.36%	88.64%	1:1	1:0.9	91.67%	9.09%	82.58%	68.18%	31.82%	86.67%	65.81%
Staff Nurse [Psychiatric]	428	478	1:0.9	23.01%	76.99%	1:0.9	1:0.9	93.10%	20.71%	72.38%	83.47%	16.53%	89.09%	81.79%
Staff Nurses [General/ Children's]	459	542	1:0.8	11.62%	88.38%	1:0.9	1:0.8	98.34%	11.44%	86.90%	62.18%	37.82%	76.19%	60.33%
<b>Nursing &amp; Midwifery</b>	<b>1,730</b>	<b>1,953</b>	<b>1:0.9</b>	<b>14.54%</b>	<b>85.46%</b>	<b>1:0.9</b>	<b>1:0.9</b>	<b>95.95%</b>	<b>13.52%</b>	<b>82.44%</b>	<b>74.76%</b>	<b>25.24%</b>	<b>89.44%</b>	<b>72.26%</b>
Audiology	12	12	1:1	8.33%	91.67%	1:1	1:1	91.67%	8.33%	83.33%	100.00%		100.00%	100.00%
Counsellor Therapists	30	32	1:0.9	31.25%	68.75%	1:1	1:0.9	100.00%	31.25%	68.75%	90.63%	9.38%	100.00%	86.36%
Dental Hygienists	7	8	1:0.9		100.00%	1:	1:0.9	100.00%		100.00%	62.50%	37.50%		62.50%
Dietitians	33	36	1:0.9		100.00%	1:	1:0.9	97.22%		97.22%	88.89%	11.11%		88.89%
Occupational Therapists	144	164	1:0.9	9.15%	90.85%	1:1	1:0.9	100.00%	9.15%	90.85%	75.61%	24.39%	100.00%	73.15%
Orthoptists	2	2	1:1	100.00%		1:1	1:	100.00%	100.00%		100.00%		100.00%	
Other Health & Social Care	4	4	1:0.9		100.00%	1:	1:0.9	100.00%		100.00%	50.00%	50.00%		50.00%
Pharmacists	3	3	1:0.9	33.33%	66.67%	1:1	1:0.9	100.00%	33.33%	66.67%	100.00%		100.00%	100.00%
Physiotherapists	107	127	1:0.8	23.62%	76.38%	1:0.9	1:0.8	100.00%	23.62%	76.38%	70.08%	29.92%	90.00%	63.92%
Play Therapists/ Specialists	5	7	1:0.8	28.57%	71.43%	1:0.6	1:0.9	100.00%	28.57%	71.43%	71.43%	28.57%	50.00%	80.00%
Podiatrists & Chiropodists	6	7	1:0.9		100.00%	1:	1:0.9	100.00%		100.00%	85.71%	14.29%		85.71%
Psychologists	100	112	1:0.9	16.96%	83.04%	1:1	1:0.9	84.82%	15.18%	69.64%	70.54%	29.46%	89.47%	66.67%
Social Care	172	204	1:0.8	18.63%	81.37%	1:0.9	1:0.8	94.12%	17.65%	76.47%	53.43%	46.57%	60.53%	51.81%
Social Workers	84	92	1:0.9	16.30%	83.70%	1:0.9	1:0.9	97.83%	16.30%	81.52%	84.78%	15.22%	100.00%	81.82%
Speech & Language Therapists	102	117	1:0.9	1.71%	98.29%	1:1	1:0.9	99.15%	1.71%	97.44%	76.07%	23.93%	100.00%	75.65%
<b>Health &amp; Social Care Professionals</b>	<b>810</b>	<b>927</b>	<b>1:0.9</b>	<b>14.56%</b>	<b>85.44%</b>	<b>1:0.9</b>	<b>1:0.9</b>	<b>96.33%</b>	<b>14.13%</b>	<b>82.20%</b>	<b>71.63%</b>	<b>28.37%</b>	<b>84.44%</b>	<b>69.44%</b>
CEO/Chief Officer	3	3	1:1	33.33%	66.67%	1:1	1:1	100.00%	33.33%	66.67%	100.00%		100.00%	100.00%
General Administrative (III & IV)	422	475	1:0.9	7.37%	92.63%	1:0.9	1:0.9	93.89%	7.37%	86.53%	68.21%	31.79%	97.14%	65.91%
General Managers	12	13	1:1	23.08%	76.92%	1:1	1:0.9	92.31%	23.08%	69.23%	100.00%		100.00%	100.00%
Middle Management (V-VII)	241	252	1:1	17.86%	82.14%	1:1	1:1	95.24%	16.67%	78.57%	89.68%	10.32%	100.00%	87.44%
National Director, Assistant	2	2	1:0.8	50.00%	50.00%	1:0.5	1:1	100.00%	50.00%	50.00%	100.00%		100.00%	100.00%
Other Executives	7	7	1:1	14.29%	85.71%	1:1	1:1	85.71%	14.29%	71.43%	100.00%		100.00%	100.00%
VIII	38	39	1:1	15.38%	84.62%	1:1	1:1	92.31%	15.38%	76.92%	94.87%	5.13%	100.00%	93.94%
<b>Management &amp; Administrative</b>	<b>725</b>	<b>791</b>	<b>1:0.9</b>	<b>11.63%</b>	<b>88.37%</b>	<b>1:1</b>	<b>1:0.9</b>	<b>94.18%</b>	<b>11.25%</b>	<b>82.93%</b>	<b>77.37%</b>	<b>22.63%</b>	<b>98.91%</b>	<b>74.54%</b>
Catering	74	86	1:0.9	25.58%	74.42%	1:0.9	1:0.8	100.00%	25.58%	74.42%	47.67%	52.33%	68.18%	40.63%
Household Services	152	174	1:0.9	18.39%	81.61%	1:1	1:0.9	99.43%	18.39%	81.03%	48.85%	51.15%	90.63%	39.44%
Maintenance	28	32	1:0.9	100.00%		1:0.9	1:	90.63%	90.63%		78.13%	21.88%	78.13%	
Other Support	23	48	1:0.5	33.33%	66.67%	1:0.7	1:0.3	43.75%	22.92%	20.83%	20.83%	79.17%	56.25%	3.13%



NOV 2024	WTE NOV 2024	No. NOV 2024	WTE :	Number Male %	Number Female %	Male WTE : No.	Female WTE : No	Perm Count %	Perm Count Male %	Perm Count Female %	Fulltime Count %	Part time Count %	FT Count Male %	FT Count Female %
<b>Total</b>	<b>6,056</b>	<b>7,067</b>	<b>1:0.9</b>	<b>17.60%</b>	<b>82.40%</b>	<b>1:0.9</b>	<b>1:0.8</b>	<b>91.59%</b>	<b>15.04%</b>	<b>76.55%</b>	<b>60.56%</b>	<b>39.44%</b>	<b>75.48%</b>	<b>57.38%</b>
Portering	7	7	1:1	100.00%		1:1	1:	100.00%	100.00%		85.71%	14.29%	85.71%	
Technical Services	1	1	1:0.9		100.00%	1:	1:0.9	100.00%		100.00%		100.00%		
<b>General Support</b>	<b>284</b>	<b>348</b>	<b>1:0.8</b>	<b>31.32%</b>	<b>68.68%</b>	<b>1:0.9</b>	<b>1:0.8</b>	<b>91.09%</b>	<b>29.02%</b>	<b>62.07%</b>	<b>47.99%</b>	<b>52.01%</b>	<b>77.06%</b>	<b>34.73%</b>
Attendant/ Aide	237	266	1:0.9	23.68%	76.32%	1:0.9	1:0.9	94.74%	22.18%	72.56%	67.29%	32.71%	82.54%	62.56%
Health Care Assistant/ Care Assistant	1,099	1,271	1:0.9	27.46%	72.54%	1:0.9	1:0.9	83.01%	21.64%	61.37%	50.59%	49.41%	60.46%	46.85%
Health Care Assistant /Home Support	621	861	1:0.7	4.18%	95.82%	1:0.8	1:0.7	97.68%	4.18%	93.50%	21.02%	78.98%	13.89%	21.33%
Health Promotion	23	25	1:0.9	16.00%	84.00%	1:1	1:0.9	100.00%	16.00%	84.00%	92.00%	8.00%	100.00%	90.48%
Health & Social Care Assistants	17	19	1:0.9	5.26%	94.74%	1:1	1:0.9	73.68%		73.68%	94.74%	5.26%	100.00%	94.44%
Home Care Services	26	29	1:0.9	10.34%	89.66%	1:0.8	1:0.9	100.00%	10.34%	89.66%	79.31%	20.69%	66.67%	80.77%
Other Care Grades	84	99	1:0.8	11.11%	88.89%	1:1	1:0.8	97.98%	11.11%	86.87%	54.55%	45.45%	100.00%	48.86%
Pastoral Care	3	6	1:0.6	83.33%	16.67%	1:0.6	1:0.2	33.33%	33.33%		50.00%	50.00%	60.00%	
Workshop Services	191	233	1:0.8	22.75%	77.25%	1:0.9	1:0.8	93.13%	20.60%	72.53%	27.47%	72.53%	49.06%	21.11%
<b>Patient &amp; Client Care</b>	<b>2,301</b>	<b>2,809</b>	<b>1:0.8</b>	<b>18.69%</b>	<b>81.31%</b>	<b>1:0.9</b>	<b>1:0.8</b>	<b>90.14%</b>	<b>15.59%</b>	<b>74.55%</b>	<b>42.29%</b>	<b>57.71%</b>	<b>60.00%</b>	<b>38.22%</b>



## Employment Report by WTE, Headcount, Gender, Full-Time / Part-Time etc. NOV 2024

CHO 5 NOV 2024

NOV 2024	WTE NOV 2024	No. NOV 2024	WTE : No	Number Male %	Number Female %	Male WTE : No.	Female WTE : No	Perm Count %	Number Male %	Number Female %	Fulltime Count %	Part time Count %	FT Count Male %	FT Count Female %
<b>Total</b>	<b>6,056</b>	<b>7,067</b>	<b>1:0.9</b>	<b>17.60%</b>	<b>82.40%</b>	<b>1:0.9</b>	<b>1:0.8</b>	<b>91.59%</b>	<b>15.04%</b>	<b>76.55%</b>	<b>60.56%</b>	<b>39.44%</b>	<b>75.48%</b>	<b>57.38%</b>
Community Health & Wellbeing	48	54	1:0.9	12.96%	87.04%	1:1	1:0.9	98.15%	12.96%	85.19%	81.48%	18.52%	100.00%	78.72%
Disabilities	1,782	2,092	1:0.9	22.90%	77.10%	1:0.9	1:0.8	87.14%	18.79%	68.36%	53.01%	46.99%	62.84%	50.09%
Mental Health	1,309	1,441	1:0.9	24.57%	75.43%	1:0.9	1:0.9	90.63%	21.30%	69.33%	81.68%	18.32%	92.94%	78.01%
Older People	1,637	1,977	1:0.8	10.52%	89.48%	1:0.9	1:0.8	97.82%	9.96%	87.86%	46.94%	53.06%	66.83%	44.60%
Primary Care	1,178	1,397	1:0.8	12.81%	87.19%	1:0.9	1:0.8	89.84%	10.16%	79.67%	66.43%	33.57%	81.56%	64.20%
CHO Operations	101	106	1:1	16.04%	83.96%	1:1	1:0.9	96.23%	16.04%	80.19%	88.68%	11.32%	100.00%	86.52%



CHO 5 NOV 2024

Employment by Grade Group NOV 2024	WTE DEC 2019	WTE DEC 2022	WTE DEC 2023	WTE OCT 2024	WTE NOV 2024	WTE Change 2023	WTE Change 2024	WTE Change OCT 2024	WTE Change Dec 2022 to NOV 2024	WTE Change Dec 2019 to NOV 2024	% WTE Change Dec 2022 to NOV 2024	No. NOV 2024
<b>Overall</b>	<b>5,277</b>	<b>5,805</b>	<b>6,141</b>	<b>6,053</b>	<b>6,056</b>	<b>+336</b>	<b>-85</b>	<b>+3</b>	<b>+251</b>	<b>+779</b>	<b>+4.3%</b>	<b>7,067</b>
Consultant Dentistry	1	1	1	1	1	+0	0	+0	0	0	-5.0%	1
Consultant Medicine		1	1	1	1	0	+0	+0	0	+1	-20.0%	1
Consultant Psychiatry	27	34	37	37	37	+3	0	0	+2	+9	+6.8%	39
Consultant Surgery	2									-2	-100.0%	
<b>Consultants</b>	<b>30</b>	<b>36</b>	<b>39</b>	<b>38</b>	<b>38</b>	<b>+3</b>	<b>-1</b>	<b>0</b>	<b>+2</b>	<b>+8</b>	<b>+5.7%</b>	<b>41</b>
Registrar	26	38	46	52	53	+8	+7	+1	+15	+27	+40.6%	54
Senior Registrar	3	4	7	6	6	+3	-1	+0	+2	+3	+51.5%	6
<b>Registrars</b>	<b>29</b>	<b>41</b>	<b>53</b>	<b>58</b>	<b>59</b>	<b>+11</b>	<b>+6</b>	<b>+1</b>	<b>+17</b>	<b>+30</b>	<b>+41.7%</b>	<b>60</b>
Interns	1	1	1	2	2	+0	+1	0	+1	+1	+97.0%	2
Senior House Officer	36	31	34	37	37	+2	+3	0	+5	+1	+16.6%	40
<b>SHO/ Interns</b>	<b>37</b>	<b>32</b>	<b>35</b>	<b>39</b>	<b>39</b>	<b>+2</b>	<b>+4</b>	<b>0</b>	<b>+6</b>	<b>+2</b>	<b>+19.1%</b>	<b>42</b>
Dentists	36	36	33	34	34	-2	+1	+0	-2	-2	-4.4%	43
Other Medical	29	39	38	37	36	-1	-2	-2	-3	+7	-8.8%	53
<b>Medical/ Dental, other</b>	<b>65</b>	<b>75</b>	<b>72</b>	<b>72</b>	<b>70</b>	<b>-3</b>	<b>-2</b>	<b>-1</b>	<b>-5</b>	<b>+5</b>	<b>-6.7%</b>	<b>96</b>
<b>Medical &amp; Dental</b>	<b>161</b>	<b>185</b>		<b>206</b>	<b>206</b>	<b>+13</b>	<b>+8</b>	<b>-1</b>	<b>+20</b>	<b>+44</b>	<b>+11.1%</b>	<b>+239</b>
Clinical Nurse/ Midwife Manager 1	68	76	69	69	70	-7	+2	+1	-6	+3	-7.5%	77
Clinical Nurse/ Midwife Manager 2	185	183	187	184	183	+4	-4	-1	0	-2	-0.1%	194
Clinical Nurse/ Midwife Manager 3	28	31	33	32	34	+2	+2	+2	+4	+6	+11.7%	35
Director Nursing/Midwifery, Assistant	43	63	72	68	70	+8	-2	+1	+6	+26	+10.0%	75
Director of Nursing/Midwifery	22	22	25	22	22	+3	-3	0	+0	+1	+1.5%	23
<b>Nurse/ Midwife Manager</b>	<b>345</b>	<b>375</b>	<b>385</b>	<b>376</b>	<b>380</b>	<b>+10</b>	<b>-5</b>	<b>+3</b>	<b>+4</b>	<b>+34</b>	<b>+1.1%</b>	<b>404</b>
Adv. Nurse/ Midwife, Candidate		6	7	4	4	+1	-3	0	-2	+4	-34.8%	4
Advanced Nurse/ Midwife Practitioner	2	12	18	22	22	+6	+4	0	+10	+20	+77.0%	23
Clinical Nurse/ Midwife Specialist	51	93	135	127	129	+42	-6	+2	+36	+78	+38.1%	141
<b>Nurse/ Midwife Specialist &amp; AN/MP</b>	<b>53</b>	<b>112</b>	<b>160</b>	<b>153</b>	<b>155</b>	<b>+49</b>	<b>-6</b>	<b>+2</b>	<b>+43</b>	<b>+102</b>	<b>+38.6%</b>	<b>168</b>
Staff Midwives		2	1	1	1	0	-1	+0	-1	+1	-60.7%	1
Staff Nurse [Intellectual Disability]	115	121	107	111	119	-13	+12	+8	-2	+3	-1.4%	132
Staff Nurse [Psychiatric]	415	407	402	411	428	-4	+26	+17	+21	+13	+5.2%	478
Staff Nurses [General/ Children's]	432	453	490	461	459	+37	-31	-2	+5	+27	+1.2%	542
<b>Staff Nurse/ Staff Midwife</b>	<b>962</b>	<b>982</b>	<b>1,001</b>	<b>983</b>	<b>1,006</b>	<b>+19</b>	<b>+5</b>	<b>+23</b>	<b>+24</b>	<b>+44</b>	<b>+2.4%</b>	<b>1,153</b>
Public Health Nurse	176	165	160	167	166	-4	+6	-1	+1	-10	+0.8%	202
<b>Public Health Nurse</b>	<b>176</b>	<b>165</b>	<b>160</b>	<b>167</b>	<b>166</b>	<b>-4</b>	<b>+6</b>	<b>-1</b>	<b>+1</b>	<b>-10</b>	<b>+0.8%</b>	<b>202</b>
Nursing/ Midwifery awaiting registration	2	6	21	20	5	+15	-16	-15	-1	+3	-10.7%	6
Post-registration Nurse/ Midwife Student	5	4	9	12	13	+5	+4	+1	+9	+8	+230.8%	13
Pre-registration Nurse/ Midwife Intern	1	1	3	5	1	+2	-2	-4	0	+0	-12.3%	2
<b>Nursing/ Midwifery Student</b>	<b>8</b>	<b>11</b>	<b>33</b>	<b>37</b>	<b>19</b>	<b>+23</b>	<b>-14</b>	<b>-18</b>	<b>+8</b>	<b>+11</b>	<b>+78.1%</b>	<b>21</b>
Nursing Education/Clinical	4	4	6	6	5	+1	-1	-1	+0	+0	+9.8%	5
<b>Nursing/ Midwifery other</b>	<b>4</b>	<b>4</b>	<b>6</b>	<b>6</b>	<b>5</b>	<b>+1</b>	<b>-1</b>	<b>-1</b>	<b>+0</b>	<b>+0</b>	<b>+9.8%</b>	<b>5</b>
<b>Nursing &amp; Midwifery</b>	<b>1,549</b>	<b>1,649</b>		<b>1,722</b>	<b>1,730</b>	<b>+97</b>	<b>-16</b>	<b>+8</b>	<b>+81</b>	<b>+182</b>	<b>+4.9%</b>	<b>+1,953</b>
Dietitians	15	26	31	33	33	+5	+1	0	+6	+18	+24.2%	36
Occupational Therapists	119	135	142	146	144	+7	+1	-2	+9	+25	+6.6%	164
Orthoptists	1	1	2	2	2	+1	+0	+0	+1	+2	+102.0%	2
Physiotherapists	88	102	108	108	107	+7	-2	-1	+5	+19	+5.0%	127
Podiatrists & Chiroprpodists	1	5	7	6	6	+1	-1	0	+1	+5	+10.1%	7
Speech & Language Therapists	102	100	108	105	102	+8	-6	-2	+3	+0	+2.9%	117
<b>Therapy Professions</b>	<b>325</b>	<b>369</b>	<b>399</b>	<b>400</b>	<b>394</b>	<b>+30</b>	<b>-5</b>	<b>-6</b>	<b>+25</b>	<b>+68</b>	<b>+6.7%</b>	<b>453</b>
Audiology	4	7	11	13	12	+4	+1	-1	+4	+8	+57.6%	12
<b>Health Science/ Diagnostics</b>	<b>4</b>	<b>7</b>	<b>11</b>	<b>13</b>	<b>12</b>	<b>+4</b>	<b>+1</b>	<b>-1</b>	<b>+4</b>	<b>+8</b>	<b>+57.6%</b>	<b>12</b>
Social Care	164	174	178	170	172	+4	-5	+2	-1	+8	-0.8%	204
<b>Social Care</b>	<b>164</b>	<b>174</b>	<b>178</b>	<b>170</b>	<b>172</b>	<b>+4</b>	<b>-5</b>	<b>+2</b>	<b>-1</b>	<b>+8</b>	<b>-0.8%</b>	<b>204</b>
Pharmacists	1	3	2	3	3	-1	+1	+0	0	+2	-3.2%	3
<b>Pharmacy</b>	<b>1</b>	<b>3</b>	<b>2</b>	<b>3</b>	<b>3</b>	<b>-1</b>	<b>+1</b>	<b>+0</b>	<b>0</b>	<b>+2</b>	<b>-3.2%</b>	<b>3</b>
Psychologists	79	80	93	99	100	+13	+7	+1	+20	+21	+24.9%	112





Employment by Grade Group NOV 2024	WTE DEC 2019	WTE DEC 2022	WTE DEC 2023	WTE OCT 2024	WTE NOV 2024	WTE Change 2023	WTE Change 2024	WTE Change OCT 2024	WTE Change Dec 2022 to NOV 2024	WTE Change Dec 2019 to NOV 2024	% WTE Change Dec 2022 to NOV 2024	No. NOV 2024
<b>Overall</b>	<b>5,277</b>	<b>5,805</b>	<b>6,141</b>	<b>6,053</b>	<b>6,056</b>	<b>+336</b>	<b>-85</b>	<b>+3</b>	<b>+251</b>	<b>+779</b>	<b>+4.3%</b>	<b>7,067</b>
<b>Psychologists</b>	<b>79</b>	<b>80</b>	<b>93</b>	<b>99</b>	<b>100</b>	<b>+13</b>	<b>+7</b>	<b>+1</b>	<b>+20</b>	<b>+21</b>	<b>+24.9%</b>	<b>112</b>
Social Workers	61	70	79	81	84	+9	+5	+3	+14	+23	+20.4%	92
<b>Social Workers</b>	<b>61</b>	<b>70</b>	<b>79</b>	<b>81</b>	<b>84</b>	<b>+9</b>	<b>+5</b>	<b>+3</b>	<b>+14</b>	<b>+23</b>	<b>+20.4%</b>	<b>92</b>
Counsellor Therapists	22	36	32	30	30	-4	-2	0	-6	+8	-16.3%	32
Dental Hygienists	6	6	7	7	7	+0	+0	+0	+0	+1	+7.4%	8
Other Health & Social Care		3	6	4	4	+3	-2	-1	+1	+4	+41.7%	4
Play Therapists/ Specialists	6	5	6	6	5	+1	-1	0	+0	-1	+3.6%	7
<b>H&amp;SC, Other</b>	<b>34</b>	<b>50</b>	<b>51</b>	<b>47</b>	<b>46</b>	<b>+1</b>	<b>-5</b>	<b>-1</b>	<b>-4</b>	<b>+12</b>	<b>-8.3%</b>	<b>51</b>
<b>Health &amp; Social Care Professionals</b>	<b>668</b>	<b>752</b>		<b>811</b>	<b>810</b>	<b>+59</b>	<b>-2</b>	<b>-1</b>	<b>+57</b>	<b>+142</b>	<b>+7.6%</b>	<b>+927</b>
CEO/Chief Officer	3	4	5	3	3	+1	-2	+0	-1	+0	-24.8%	3
General Managers	12	14	14	12	12	0	-2	+1	-2	+1	-13.0%	13
National Director, Assistant	1	2	2	2	2	+0	0	0	0	+1	-23.1%	2
Other Executives	3	7	7	8	7	+0	+0	-1	+0	+4	+3.2%	7
VIII	25	45	41	39	38	-4	-3	-1	-7	+13	-15.6%	39
<b>Management (VIII &amp; above)</b>	<b>44</b>	<b>72</b>	<b>69</b>	<b>63</b>	<b>62</b>	<b>-3</b>	<b>-7</b>	<b>-1</b>	<b>-10</b>	<b>+18</b>	<b>-14.0%</b>	<b>64</b>
Middle Management (V-VII)	130	215	244	240	241	+29	-4	+1	+25	+110	+11.8%	252
<b>Administrative/ Supervisory (V to VII)</b>	<b>130</b>	<b>215</b>	<b>244</b>	<b>240</b>	<b>241</b>	<b>+29</b>	<b>-4</b>	<b>+1</b>	<b>+25</b>	<b>+110</b>	<b>+11.8%</b>	<b>252</b>
General Administrative (III & IV)	329	398	450	421	422	+52	-28	+1	+24	+93	+6.1%	475
<b>Clerical (III &amp; IV)</b>	<b>329</b>	<b>398</b>	<b>450</b>	<b>421</b>	<b>422</b>	<b>+52</b>	<b>-28</b>	<b>+1</b>	<b>+24</b>	<b>+93</b>	<b>+6.1%</b>	<b>475</b>
<b>Management &amp; Administrative</b>	<b>504</b>	<b>686</b>		<b>725</b>	<b>725</b>	<b>+78</b>	<b>-38</b>	<b>+0</b>	<b>+39</b>	<b>+222</b>	<b>+5.8%</b>	<b>+791</b>
Catering	35	37	34	73	74	-3	+40	+1	+37	+39	+98.2%	86
Household Services	225	203	202	153	152	-1	-50	-1	-51	-73	-25.2%	174
Other Support	34	30	25	23	23	-5	-2	0	-7	-11	-24.4%	48
Portering	9	8	9	7	7	+0	-2	+0	-2	-2	-18.1%	7
<b>Support</b>	<b>303</b>	<b>279</b>	<b>270</b>	<b>256</b>	<b>255</b>	<b>-9</b>	<b>-15</b>	<b>0</b>	<b>-23</b>	<b>-47</b>	<b>-8.4%</b>	<b>315</b>
Maintenance	31	28	27	29	28	-1	+1	0	0	-2	-0.5%	32
Technical Services	1	1	1	1	1	0	+0	+0	0	0	-14.0%	1
<b>Maintenance/ Technical</b>	<b>32</b>	<b>29</b>	<b>28</b>	<b>30</b>	<b>29</b>	<b>-1</b>	<b>+1</b>	<b>0</b>	<b>0</b>	<b>-3</b>	<b>-0.9%</b>	<b>33</b>
<b>General Support</b>	<b>334</b>	<b>308</b>		<b>285</b>	<b>284</b>	<b>-10</b>	<b>-14</b>	<b>-1</b>	<b>-24</b>	<b>-50</b>	<b>-7.7%</b>	<b>+348</b>
Attendant/ Aide	387	275	287	242	237	+12	-50	-5	-38	-150	-13.9%	266
Health & Social Care Assistants	9	23	22	15	17	0	-5	+2	-6	+8	-25.1%	19
Health Care Assistant /Home Support	665	648	642	623	621	-6	-21	-2	-27	-44	-4.2%	861
Health Care Assistant/ Care Assistant	783	983	1,057	1,096	1,099	+75	+42	+4	+117	+317	+11.9%	1,271
<b>Health Care Assistants</b>	<b>1,843</b>	<b>1,928</b>	<b>2,009</b>	<b>1,976</b>	<b>1,974</b>	<b>+81</b>	<b>-35</b>	<b>-2</b>	<b>+46</b>	<b>+131</b>	<b>+2.4%</b>	<b>2,417</b>
Health Promotion		13	25	23	23	+12	-2	0	+10	+23	+79.1%	25
Home Care Services	5	19	29	28	26	+11	-3	-2	+7	+21	+39.7%	29
Other Care Grades	64	88	83	83	84	-5	+1	+1	-4	+20	-4.2%	99
Pastoral Care	10	6	6	3	3	+0	-2	0	-2	-6	-40.1%	6
Workshop Services	139	172	173	189	191	+1	+18	+2	+19	+51	+10.8%	233
<b>Care, other</b>	<b>218</b>	<b>297</b>	<b>315</b>	<b>327</b>	<b>327</b>	<b>+18</b>	<b>+12</b>	<b>+0</b>	<b>+30</b>	<b>+109</b>	<b>+10.2%</b>	<b>392</b>
<b>Patient &amp; Client Care</b>	<b>2,061</b>	<b>2,225</b>		<b>2,303</b>	<b>2,301</b>	<b>+99</b>	<b>-23</b>	<b>-2</b>	<b>+76</b>	<b>+240</b>	<b>+3.4%</b>	<b>+2,809</b>

## CHO 5 Employment Report: NOV 2024

### Month-on-Month Summary

Month-on-Month Summary	% WTE change since OCT 2024	WTE change since OCT 2024	Community Health & Wellbeing	Mental Health	Primary Care	Disabilities	Older People	CHO Operations
Consultants	-0.2%	-0.1		-0.1	+0.0	+0.0		
Registrars	+1.5%	+0.8		-0.3	+1.1			
SHO/ Interns	-0.4%	-0.2		-0.2	+0.0			
Medical/ Dental, other	-2.0%	-1.5		+0.0	-2.0		+0.6	
<b>Medical &amp; Dental</b>	<b>-0.4%</b>	<b>-0.9</b>		<b>-0.6</b>	<b>-0.9</b>	<b>+0.0</b>	<b>+0.6</b>	
Nurse/ Midwife Manager	+0.9%	+3.4	-0.3	+0.3	-0.0	+2.8	+0.6	+0.0
Nurse/ Midwife Specialist & AN/MP	+1.1%	+1.6	-0.0	+1.1	+0.7	+0.1	-0.2	
Staff Nurse/ Staff Midwife	+2.3%	+22.9		+14.8	+0.7	+10.6	-3.2	
Public Health Nurse	-0.7%	-1.1			-1.0	-0.1	+0.0	
Nursing/ Midwifery Student	-48.4%	-17.8		-16.2	+0.9	-2.5		
Nursing/ Midwifery other	-17.3%	-1.0		-0.1		-0.9		
<b>Nursing &amp; Midwifery</b>	<b>+0.5%</b>	<b>+8.0</b>	<b>-0.3</b>	<b>-0.1</b>	<b>+1.2</b>	<b>+9.9</b>	<b>-2.8</b>	<b>+0.0</b>
Therapy Professions	-1.5%	-6.0	+0.1	-1.1	-5.0	+0.1	+0.0	
Health Science/ Diagnostics	-7.2%	-0.9			-0.9			
Social Care	+1.4%	+2.5		-0.8	+0.5	+2.7		
Pharmacy	+5.3%	+0.1	+0.1		+0.1		+0.0	
Psychologists	+1.1%	+1.0		+0.2	+0.5	+0.4	+0.1	
Social Workers	+3.6%	+2.9		+0.5	+0.6	+2.5	+0.1	-0.7



H&SC, Other	-2.1%	-1.0		-0.1	+0.0	-0.2	-0.7	
<b>Health &amp; Social Care Professionals</b>	<b>-0.2%</b>	<b>-1.3</b>	<b>+0.1</b>	<b>-1.3</b>	<b>-4.4</b>	<b>+5.4</b>	<b>-0.6</b>	<b>-0.7</b>
Management (VIII & above)	-2.2%	-1.4	+0.0	-0.6	-1.1	+0.4	+0.0	-0.1
Administrative/ Supervisory (V to VII)	+0.3%	+0.7	-0.0	+1.8	+1.2	-1.3	+0.7	-1.7
Clerical (III & IV)	+0.2%	+0.9	-1.0	+0.0	+0.1	+1.0	+0.9	-0.2
<b>Management &amp; Administrative</b>	<b>+0.0%</b>	<b>+0.3</b>	<b>-1.0</b>	<b>+1.3</b>	<b>+0.1</b>	<b>+0.1</b>	<b>+1.7</b>	<b>-2.0</b>
Support	-0.2%	-0.5		+0.5	-0.2	+0.1	-0.8	
Maintenance/ Technical	-1.4%	-0.4		-0.0		-0.4	+0.0	+0.0
<b>General Support</b>	<b>-0.3%</b>	<b>-0.9</b>		<b>+0.4</b>	<b>-0.2</b>	<b>-0.3</b>	<b>-0.8</b>	<b>+0.0</b>
Health Care Assistants	-0.1%	-2.1		-0.9	-0.2	+7.1	-8.1	
Care, other	+0.0%	+0.1	-0.3	-0.4	-0.7	+3.4	-1.8	
<b>Patient &amp; Client Care</b>	<b>-0.1%</b>	<b>-2.0</b>	<b>-0.3</b>	<b>-1.3</b>	<b>-0.9</b>	<b>+10.5</b>	<b>-9.9</b>	



## CHO 5 Employment Report: NOV 2024

### Year-to-Date Summary

Year-to-Date Summary	% WTE change since DEC 2023	WTE change since DEC 2023	Community Health & Wellbeing	Mental Health	Primary Care	Disabilities	Older People	CHO Operations
Consultants	-1.3%	-0.5		-0.2	-0.1	-0.2		
Registrars	+11.2%	+5.9		-0.5	+6.4			
SHO/ Interns	+10.6%	+3.7		+3.7	+0.0			
Medical/ Dental, other	-2.2%	-1.6		+0.0	-0.9		-0.7	
<b>Medical &amp; Dental</b>	<b>+3.8%</b>	<b>+7.6</b>		<b>+3.0</b>	<b>+5.4</b>	<b>-0.2</b>	<b>-0.7</b>	
Nurse/ Midwife Manager	-1.4%	-5.5	-1.2	-2.2	-0.9	+5.5	-6.7	+0.0
Nurse/ Midwife Specialist & AN/MP	-3.5%	-5.6	+2.7	-4.8	-2.0	-0.2	-1.4	
Staff Nurse/ Staff Midwife	+0.5%	+5.0		+27.6	-16.4	+10.2	-16.3	
Public Health Nurse	+3.5%	+5.6			+4.2	+1.4	+0.0	
Nursing/ Midwifery Student	-42.8%	-14.2		-15.3	+4.0	-0.9	-2.0	
Nursing/ Midwifery other	-16.3%	-0.9		-0.9		+0.0		
<b>Nursing &amp; Midwifery</b>	<b>-0.9%</b>	<b>-15.5</b>	<b>+1.5</b>	<b>+4.4</b>	<b>-11.1</b>	<b>+16.0</b>	<b>-26.4</b>	<b>+0.0</b>
Therapy Professions	-1.2%	-4.9	-0.2	+0.5	-12.9	+5.6	+2.0	
Health Science/ Diagnostics	+4.4%	+0.5			+0.5			
Social Care	-3.0%	-5.4		-0.5	-0.2	-4.8		
Pharmacy	+61.4%	+1.1	+1.0		+0.2		-0.1	



Psychologists	+7.5%	+6.9		-0.7	+7.0	+0.6	+0.0	
Social Workers	+6.3%	+5.0		-2.8	-0.9	+7.2	-0.4	+1.9
H&SC, Other	-9.7%	-4.9		-2.0	+0.1	-0.2	-2.8	
<b>Health &amp; Social Care Professionals</b>	<b>-0.2%</b>	<b>-1.8</b>	<b>+0.8</b>	<b>-5.5</b>	<b>-6.2</b>	<b>+8.5</b>	<b>-1.3</b>	<b>+1.9</b>
Management (VIII & above)	-10.4%	-7.2	+0.5	-0.5	-3.6	-0.8	+1.0	-3.8
Administrative/ Supervisory (V to VII)	-1.5%	-3.6	-0.9	+0.5	-3.0	+1.7	+2.2	-4.1
Clerical (III & IV)	-6.1%	-27.6	+0.3	-6.3	-11.7	-6.1	-4.7	+1.0
<b>Management &amp; Administrative</b>	<b>-5.0%</b>	<b>-38.4</b>	<b>-0.1</b>	<b>-6.4</b>	<b>-18.3</b>	<b>-5.2</b>	<b>-1.5</b>	<b>-7.0</b>
Support	-5.5%	-14.8		-7.9	+0.6	-0.1	-7.4	
Maintenance/ Technical	+4.2%	+1.2		+1.0		+0.2	+0.0	+0.0
<b>General Support</b>	<b>-4.6%</b>	<b>-13.6</b>		<b>-6.9</b>	<b>+0.6</b>	<b>+0.1</b>	<b>-7.4</b>	<b>+0.0</b>
Health Care Assistants	-1.7%	-34.8		-5.7	-7.1	+32.0	-54.0	
Care, other	+3.8%	+12.0	-2.7	+1.2	+0.1	+18.2	-4.8	
<b>Patient &amp; Client Care</b>	<b>-1.0%</b>	<b>-22.9</b>	<b>-2.7</b>	<b>-4.5</b>	<b>-7.1</b>	<b>+50.2</b>	<b>-58.8</b>	



## CHO 5 Employment Report: NOV 2024

### Year-on-Year Summary

Year-on-Year Summary	% WTE change since NOV 2023	WTE change since NOV 2023	Community Health & Wellbeing	Mental Health	Primary Care	Disabilities	Older People	CHO Operations
Consultants	-0.2%	-0.1		+0.1	+0.1	-0.2		
Registrars	+12.8%	+6.7		-0.5	+7.2			
SHO/ Interns	+13.5%	+4.6		+4.6	+0.0			
Medical/ Dental, other	-3.1%	-2.2		+0.0	-1.2		-1.0	
<b>Medical &amp; Dental</b>	<b>+4.6%</b>	<b>+9.0</b>		<b>+4.2</b>	<b>+6.0</b>	<b>-0.2</b>	<b>-1.0</b>	
Nurse/ Midwife Manager	-0.5%	-1.8	-1.1	-2.9	-1.6	+6.5	-3.6	+1.0
Nurse/ Midwife Specialist & AN/MP	-0.7%	-1.1	+3.4	-3.3	-0.6	+0.8	-1.4	
Staff Nurse/ Staff Midwife	+2.1%	+20.7		+36.8	-11.7	+13.6	-18.0	
Public Health Nurse	+2.0%	+3.2			+3.2	+0.0	+0.0	
Nursing/ Midwifery Student	-57.5%	-25.7		-21.9	+4.1	-5.9	-2.0	
Nursing/ Midwifery other	-15.9%	-0.9		-0.9		+0.0		
<b>Nursing &amp; Midwifery</b>	<b>-0.3%</b>	<b>-5.6</b>	<b>+2.4</b>	<b>+7.8</b>	<b>-6.7</b>	<b>+15.0</b>	<b>-25.0</b>	<b>+1.0</b>
Therapy Professions	-0.9%	-3.7	-0.2	-1.1	-11.9	+6.4	+2.9	
Health Science/ Diagnostics	+2.6%	+0.3			+0.3			
Social Care	-2.8%	-5.1		-0.6	-0.2	-4.3		
Pharmacy	+48.4%	+0.9	+1.0		+0.0		-0.1	
Psychologists	+7.8%	+7.2		-0.8	+7.3	+0.7	+0.0	
Social Workers	+5.4%	+4.3		-1.7	-1.6	+5.7	-0.4	+2.3

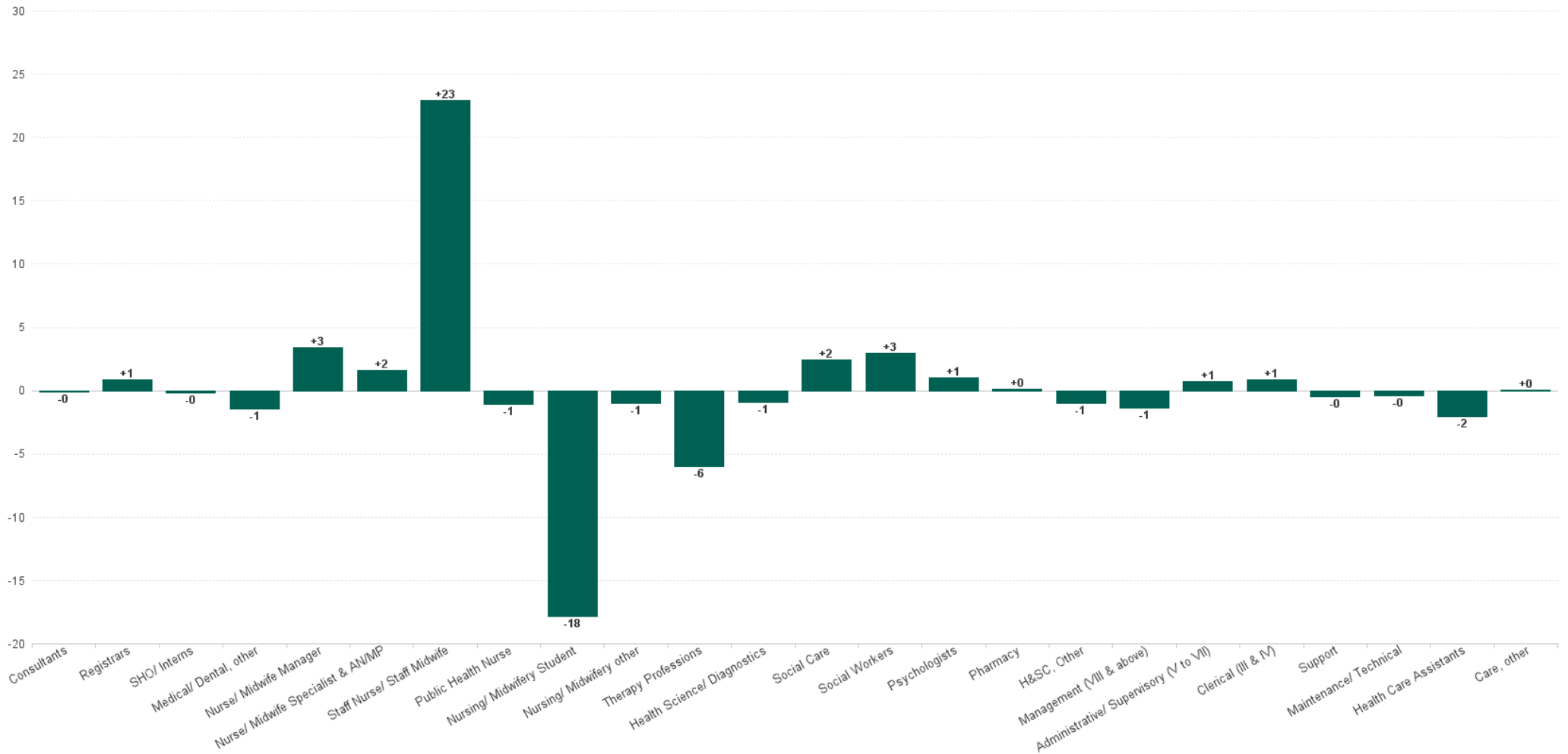


H&SC, Other	-11.6%	-6.1		-3.1	+0.1	-0.2	-2.9	
<b>Health &amp; Social Care Professionals</b>	<b>-0.3%</b>	<b>-2.1</b>	<b>+0.8</b>	<b>-7.3</b>	<b>-5.9</b>	<b>+8.3</b>	<b>-0.4</b>	<b>+2.3</b>
Management (VIII & above)	-13.0%	-9.3	+0.5	-0.5	-4.6	-0.8	+0.0	-4.0
Administrative/ Supervisory (V to VII)	-1.4%	-3.4	-0.8	-0.2	-3.0	+2.9	+1.7	-4.1
Clerical (III & IV)	-5.2%	-22.9	-0.2	-3.1	-9.8	-4.8	-6.6	+1.5
<b>Management &amp; Administrative</b>	<b>-4.7%</b>	<b>-35.6</b>	<b>-0.5</b>	<b>-3.8</b>	<b>-17.3</b>	<b>-2.7</b>	<b>-4.8</b>	<b>-6.6</b>
Support	-6.3%	-17.1		-8.6	+0.5	+0.0	-8.9	
Maintenance/ Technical	+1.5%	+0.4		+0.2		+0.2	+0.0	+0.0
<b>General Support</b>	<b>-5.5%</b>	<b>-16.6</b>		<b>-8.4</b>	<b>+0.5</b>	<b>+0.2</b>	<b>-8.9</b>	<b>+0.0</b>
Health Care Assistants	-1.7%	-34.2		-4.7	-5.8	+31.1	-54.8	
Care, other	+4.5%	+14.2	-2.5	+1.5	-0.1	+19.2	-3.9	
<b>Patient &amp; Client Care</b>	<b>-0.9%</b>	<b>-20.0</b>	<b>-2.5</b>	<b>-3.3</b>	<b>-5.9</b>	<b>+50.4</b>	<b>-58.7</b>	



CHO 5 Employment Report: NOV 2024

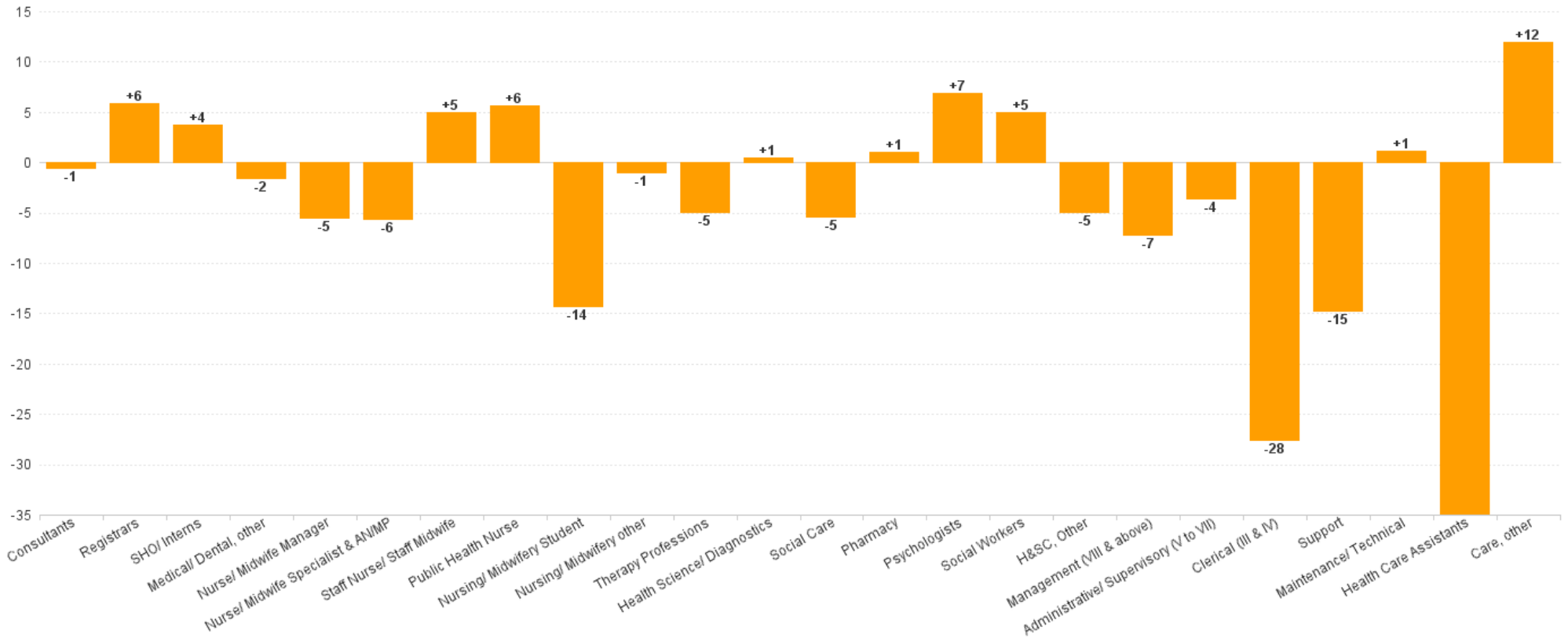
Month-on-Month Summary Chart: Change since OCT 2024





CHO 5 Employment Report: NOV 2024

Year-to-Date Summary Chart: Change since DEC 2023



# CHO 5 Employment Report: NOV 2024

## Year-on-Year Summary Chart: Change since NOV 2023

