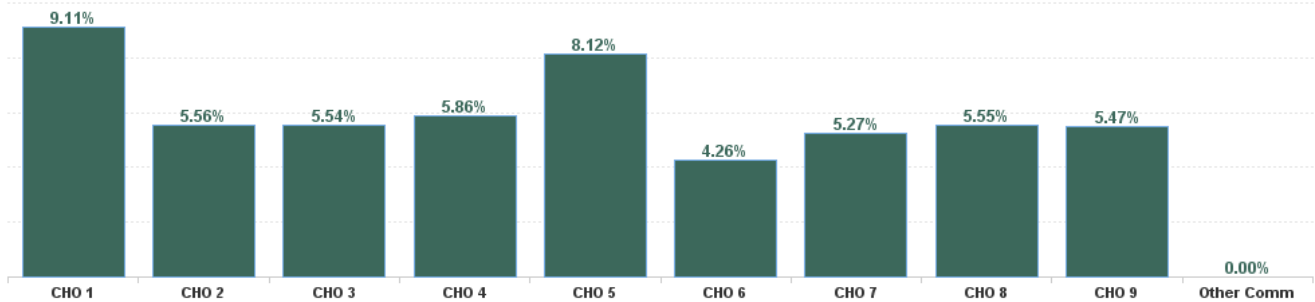


September 2024

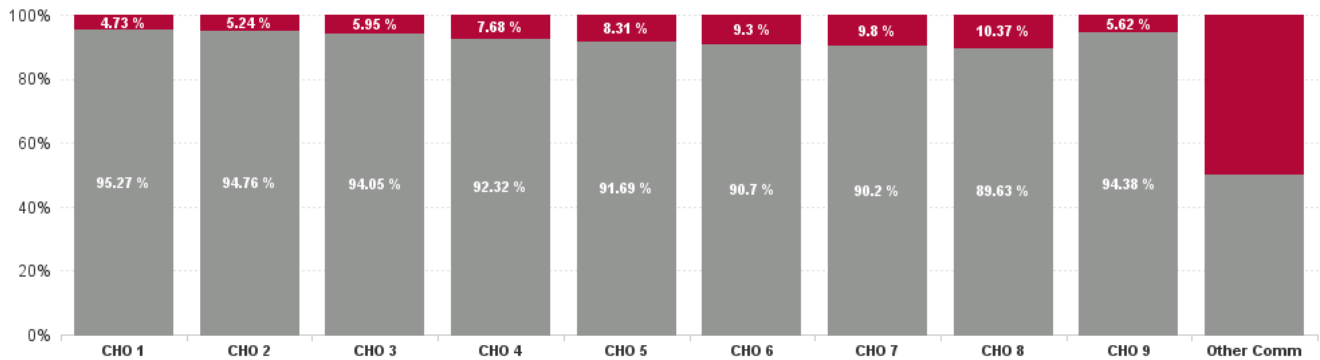
Health Service Absence Rate - by Staff Category: Sep 2024	Certified absence	Self-certified absence	Non Covid-19 absence	Covid-19 Absence	Total absence rate	% Non Covid-19 absence	% Covid-19 absence
Disabilities	4.99%	0.52%	5.51%	0.44%	5.95%	92.60%	7.40%
Medical & Dental	2.35%	0.26%	2.61%	0.00%	2.61%	100.00%	0.00%
Nursing & Midwifery	5.85%	0.65%	6.49%	0.43%	6.92%	93.80%	6.20%
Health & Social Care Professionals	4.14%	0.38%	4.52%	0.45%	4.97%	91.02%	8.98%
Management & Administrative	3.85%	0.39%	4.24%	0.36%	4.59%	92.22%	7.78%
General Support	5.14%	0.42%	5.57%	0.41%	5.97%	93.19%	6.81%
Patient & Client Care	5.25%	0.57%	5.82%	0.46%	6.28%	92.70%	7.30%

Health Service Absence Rate - by Hospital Group: Sep 2024	Certified absence	Self-certified absence	Non Covid-19 absence	Covid-19 Absence	Total absence rate	% Non Covid-19 absence	% Covid-19 absence
Disabilities	4.99%	0.52%	5.51%	0.44%	5.95%	92.60%	7.40%
CHO 1	8.07%	0.61%	8.67%	0.43%	9.11%	95.27%	4.73%
CHO 2	4.87%	0.39%	5.27%	0.29%	5.56%	94.76%	5.24%
CHO 3	4.80%	0.41%	5.21%	0.33%	5.54%	94.05%	5.95%
CHO 4	4.63%	0.78%	5.41%	0.45%	5.86%	92.32%	7.68%
CHO 5	6.91%	0.54%	7.44%	0.67%	8.12%	91.69%	8.31%
CHO 6	3.32%	0.55%	3.86%	0.40%	4.26%	90.70%	9.30%
CHO 7	4.15%	0.60%	4.75%	0.52%	5.27%	90.20%	9.80%
CHO 8	4.61%	0.37%	4.98%	0.58%	5.55%	89.63%	10.37%
CHO 9	4.75%	0.41%	5.16%	0.31%	5.47%	94.38%	5.62%
Other Community Services	0.00%	0.00%	0.00%	0.00%	0.00%	#DIV/0	#DIV/0

Total Absence Rate



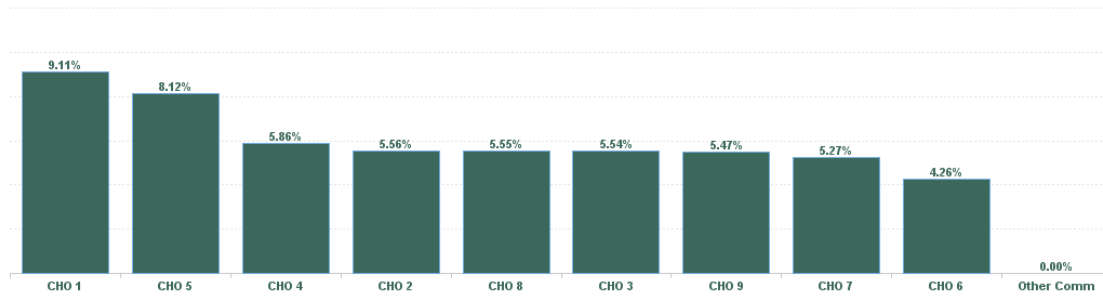
% of Absence Non Covid-19 / Covid-19



September 2024

Health Service Absence Rate - by HG, CHO/Care Group & Staff Category : Sep 2024	Certified absence	Self-certified absence	Non Covid-19 absence	Covid-19 Absence	Total absence rate	Medical & Dental	Nursing & Midwifery	Health & Social Care Professionals	Management & Administrative	General Support	Patient & Client Care
Disabilities	4.99%	0.52%	5.51%	0.44%	5.95%	2.61%	6.92%	4.97%	4.59%	5.97%	6.28%
CHO 1	8.07%	0.61%	8.67%	0.43%	9.11%	0.00%	11.60%	6.36%	6.77%	3.06%	8.83%
CHO 2	4.87%	0.39%	5.27%	0.29%	5.56%	0.00%	6.57%	4.97%	5.05%	5.56%	5.73%
CHO 3	4.80%	0.41%	5.21%	0.33%	5.54%	0.00%	5.48%	3.84%	6.88%	5.10%	5.99%
CHO 4	4.63%	0.78%	5.41%	0.45%	5.86%	0.00%	7.36%	5.91%	3.11%	7.35%	5.70%
CHO 5	6.91%	0.54%	7.44%	0.67%	8.12%	30.33%	10.84%	9.55%	4.96%	5.87%	7.50%
CHO 6	3.32%	0.55%	3.86%	0.40%	4.26%	0.00%	4.25%	4.85%	2.94%	0.09%	4.42%
CHO 7	4.15%	0.60%	4.75%	0.52%	5.27%	4.28%	5.50%	4.74%	3.87%	6.57%	5.47%
CHO 8	4.61%	0.37%	4.98%	0.58%	5.55%	0.00%	5.95%	4.92%	3.50%	4.35%	6.00%
CHO 9	4.75%	0.41%	5.16%	0.31%	5.47%	0.41%	5.69%	4.06%	5.39%	7.35%	6.89%
Other Community Services	0.00%	0.00%	0.00%	0.00%	0.00%				0.00%		

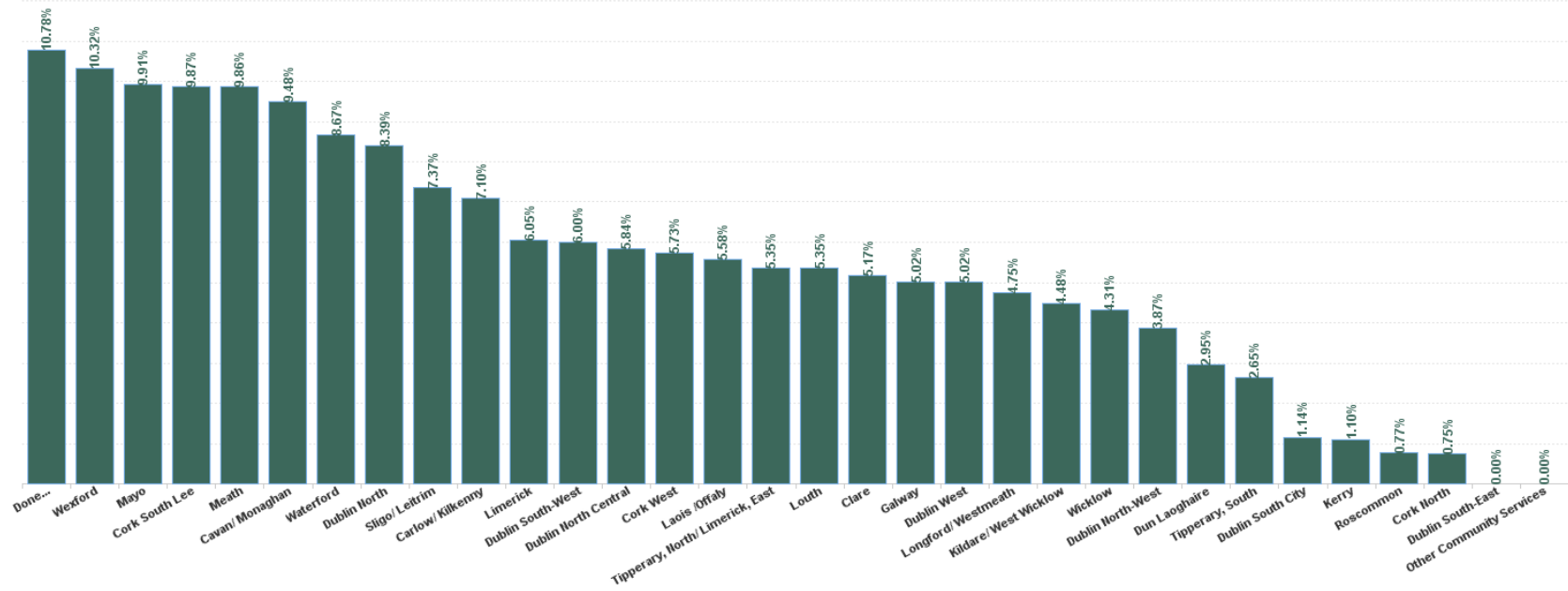
Total Absence Rate



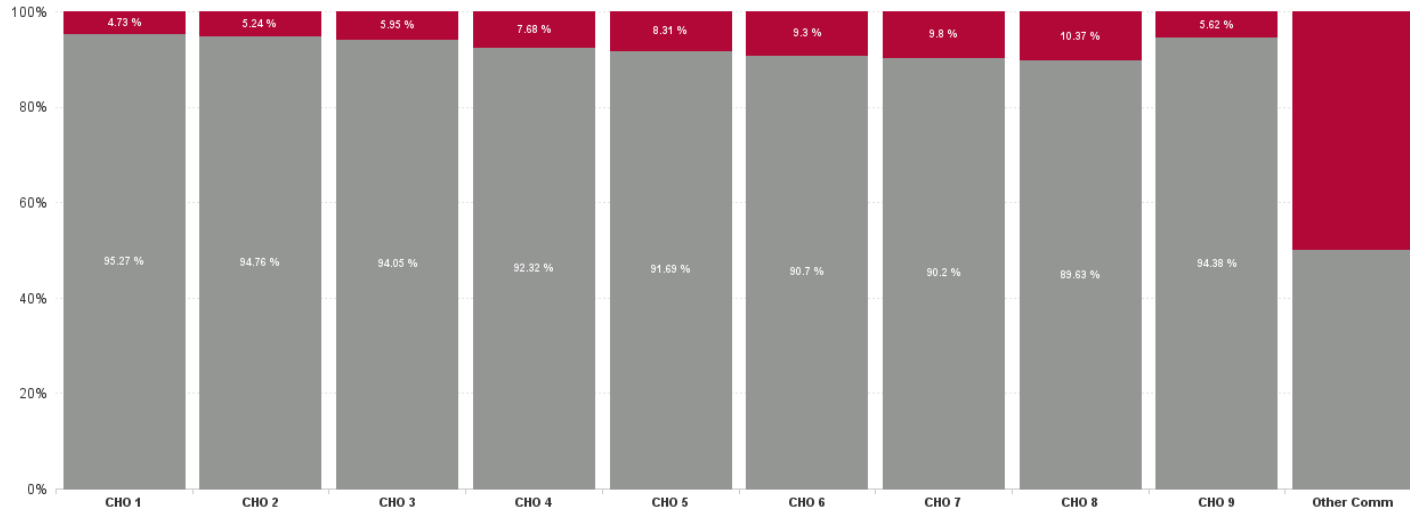
September 2024

Health Service Absence Rate - by HG, CHO/Care Group & Staff Category: Sep 2024	Certified absence	Self-certified absence	Non Covid-19 absence	Covid-19 Absence	Total absence rate	Medical & Dental	Nursing & Midwifery	Health & Social Care Professionals	Management & Administrative	General Support	Patient & Client Care
Total	4.99%	0.52%	5.51%	0.44%	5.95%	2.61%	6.92%	4.97%	4.59%	5.97%	6.28%
Cavan/ Monaghan	7.83%	0.76%	8.58%	0.90%	9.48%	0.00%	9.03%	13.53%	10.14%		9.03%
Donegal	9.66%	0.60%	10.27%	0.51%	10.78%	0.00%	16.23%	5.02%	8.36%	0.44%	9.88%
Sligo/ Leitrim	6.65%	0.55%	7.20%	0.17%	7.37%	0.00%	8.38%	3.52%	2.80%	4.35%	7.82%
CHO 1	8.07%	0.61%	8.67%	0.43%	9.11%	0.00%	11.60%	6.36%	6.77%	3.06%	8.83%
Galway	4.33%	0.41%	4.74%	0.28%	5.02%	0.00%	4.44%	4.92%	4.48%	6.26%	5.23%
Mayo	9.28%	0.27%	9.55%	0.37%	9.91%	0.00%	15.87%	5.70%	10.78%	0.00%	11.03%
Roscommon	0.77%	0.00%	0.77%	0.00%	0.77%		0.00%	1.33%	0.00%		0.00%
CHO 2	4.87%	0.39%	5.27%	0.29%	5.56%	0.00%	6.57%	4.97%	5.05%	5.56%	5.73%
Clare	4.50%	0.31%	4.81%	0.36%	5.17%	0.00%	0.00%	3.44%	3.20%		5.81%
Limerick	5.33%	0.67%	6.00%	0.05%	6.05%		7.48%	2.49%	9.43%	3.73%	6.56%
Tipperary, North/ Limerick, East	4.56%	0.26%	4.83%	0.53%	5.35%		4.55%	5.48%	6.09%	5.54%	5.65%
CHO 3	4.80%	0.41%	5.21%	0.33%	5.54%	0.00%	5.48%	3.84%	6.88%	5.10%	5.99%
Cork North	0.00%	0.75%	0.75%	0.00%	0.75%			1.56%	0.00%		0.00%
Cork South Lee	8.30%	0.84%	9.14%	0.73%	9.87%		14.99%	24.13%	2.13%		6.79%
Cork West	4.50%	0.78%	5.29%	0.44%	5.73%	0.00%	7.09%	5.41%	3.29%	7.35%	5.65%
Kerry	1.10%	0.00%	1.10%	0.00%	1.10%				1.10%		
CHO 4	4.63%	0.78%	5.41%	0.45%	5.86%	0.00%	7.36%	5.91%	3.11%	7.35%	5.70%
Carlow/ Kilkenny	6.26%	0.54%	6.79%	0.31%	7.10%		10.24%	6.89%	4.84%	0.00%	7.42%
Tipperary, South	1.25%	0.34%	1.59%	1.06%	2.65%		5.60%	0.00%	0.00%		0.91%
Waterford	7.37%	0.49%	7.86%	0.81%	8.67%	84.09%	11.74%	12.86%	5.61%	8.56%	7.55%
Wexford	8.65%	0.95%	9.61%	0.71%	10.32%	0.00%	12.18%	0.00%	4.82%		9.83%
CHO 5	6.91%	0.54%	7.44%	0.67%	8.12%	30.33%	10.84%	9.55%	4.96%	5.87%	7.50%
Dublin South-East	0.00%	0.00%	0.00%	0.00%	0.00%			0.00%			
Dun Laoghaire	1.62%	1.33%	2.95%	0.00%	2.95%		4.20%	0.00%	4.21%	0.00%	0.95%
Wicklow	3.38%	0.52%	3.90%	0.41%	4.31%	0.00%	4.25%	4.86%	2.89%	0.10%	4.52%
CHO 6	3.32%	0.55%	3.86%	0.40%	4.26%	0.00%	4.25%	4.85%	2.94%	0.09%	4.42%
Dublin South City	0.85%	0.28%	1.14%	0.00%	1.14%			0.90%			5.00%
Dublin South-West	5.07%	0.72%	5.79%	0.21%	6.00%	0.00%	7.21%	3.65%	4.25%	11.26%	6.71%
Dublin West	3.72%	0.52%	4.24%	0.78%	5.02%	4.65%	4.19%	7.89%	2.88%	4.13%	5.05%
Kildare/ West Wicklow	3.54%	0.60%	4.14%	0.35%	4.48%		3.22%	3.67%	5.39%	0.00%	4.90%
CHO 7	4.15%	0.60%	4.75%	0.52%	5.27%	4.28%	5.50%	4.74%	3.87%	6.57%	5.47%
Laois /Offaly	4.40%	0.38%	4.78%	0.80%	5.58%		5.05%	5.76%	4.97%	0.60%	5.92%
Longford/ Westmeath	3.98%	0.42%	4.40%	0.35%	4.75%	0.00%	6.95%	2.42%	2.25%	1.66%	5.73%
Louth	4.49%	0.30%	4.80%	0.55%	5.35%	0.00%	5.74%	6.40%	4.31%	11.13%	4.75%
Meath	8.96%	0.57%	9.53%	0.33%	9.86%		7.45%	5.13%	0.41%		16.25%
CHO 8	4.61%	0.37%	4.98%	0.58%	5.55%	0.00%	5.95%	4.92%	3.50%	4.35%	6.00%
Dublin North	7.17%	0.68%	7.85%	0.54%	8.39%	0.00%	9.52%	0.00%	2.14%	11.92%	9.06%
Dublin North Central	5.22%	0.28%	5.51%	0.34%	5.84%	0.71%	4.89%	4.41%	6.71%	11.14%	8.41%
Dublin North-West	3.15%	0.54%	3.68%	0.18%	3.87%	0.00%	4.16%	3.09%	3.86%	3.18%	4.42%
CHO 9	4.75%	0.41%	5.16%	0.31%	5.47%	0.41%	5.69%	4.06%	5.39%	7.35%	6.89%
Other Community Services	0.00%	0.00%	0.00%	0.00%	0.00%				0.00%		
Other Community Services	0.00%	0.00%	0.00%	0.00%	0.00%				0.00%		
Community Services	4.99%	0.52%	5.51%	0.44%	5.95%	2.61%	6.92%	4.97%	4.59%	5.97%	6.28%

Total Absence Rate



% of Absence Non Covid-19 / Covid-19



September 2024

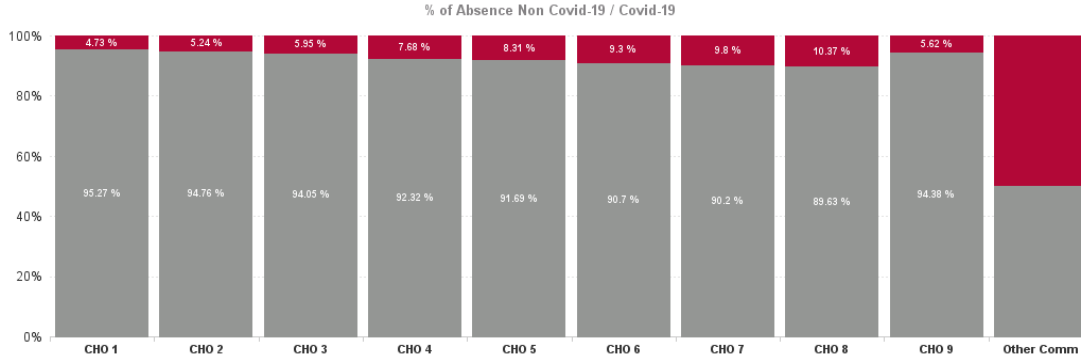
Health Service Covid 19 Absence Rate - by Hospital & Staff Category: Sep 2024	Non Covid-19 absence	Covid-19 absence	Total absence rate	Medical & Dental	Nursing & Midwifery	Health & Social Care Professionals	Management & Administrative	General Support	Patient & Client Care
Disabilities	5.51%	0.44%	5.95%	0.00%	0.43%	0.45%	0.36%	0.41%	0.46%
Cavan/ Monaghan	8.58%	0.90%	9.48%	0.00%	1.26%	0.00%	2.79%		0.68%
Donegal	10.27%	0.51%	10.78%	0.00%	0.30%	0.67%	1.72%	0.00%	0.42%
Sligo/ Leitrim	7.20%	0.17%	7.37%	0.00%	0.24%	0.26%	0.00%	0.00%	0.15%
CHO 1	8.67%	0.43%	9.11%	0.00%	0.43%	0.40%	1.31%	0.00%	0.35%
Galway	4.74%	0.28%	5.02%	0.00%	0.12%	0.25%	0.00%	0.13%	0.39%
Mayo	9.55%	0.37%	9.91%	0.00%	1.27%	0.00%	0.00%	0.00%	0.30%
Roscommon	0.77%	0.00%	0.77%		0.00%	0.00%	0.00%		0.00%
CHO 2	5.27%	0.29%	5.56%	0.00%	0.33%	0.21%	0.00%	0.11%	0.38%
Clare	4.81%	0.36%	5.17%	0.00%	0.00%	0.00%	1.65%		0.37%
Limerick	6.00%	0.05%	6.05%		0.00%	0.00%	0.44%	0.00%	0.03%
Tipperary, North/ Limerick, East	4.83%	0.53%	5.35%		0.49%	0.42%	0.25%	0.00%	0.70%
CHO 3	5.21%	0.33%	5.54%	0.00%	0.32%	0.15%	0.59%	0.00%	0.38%
Cork North	0.75%	0.00%	0.75%			0.00%	0.00%		0.00%
Cork South Lee	9.14%	0.73%	9.87%		0.00%	2.25%	0.00%		0.63%
Cork West	5.29%	0.44%	5.73%	0.00%	0.61%	0.14%	0.53%	1.26%	0.43%
Kerry	1.10%	0.00%	1.10%				0.00%		
CHO 4	5.41%	0.45%	5.86%	0.00%	0.59%	0.20%	0.48%	1.26%	0.44%
Carlow/ Kilkenny	6.79%	0.31%	7.10%		0.65%	0.00%	0.97%	0.00%	0.21%
Tipperary, South	1.59%	1.06%	2.65%		2.02%	0.00%	0.00%		0.60%
Waterford	7.86%	0.81%	8.67%	0.00%	1.32%	1.89%	0.00%	4.25%	0.54%
Wexford	9.61%	0.71%	10.32%	0.00%	0.26%	0.00%	3.01%		0.87%
CHO 5	7.44%	0.67%	8.12%	0.00%	1.03%	0.93%	0.61%	2.92%	0.49%
Dublin South-East	0.00%	0.00%	0.00%			0.00%			
Dun Laoghaire	2.95%	0.00%	2.95%		0.00%	0.00%	0.00%	0.00%	0.00%
Wicklow	3.90%	0.41%	4.31%	0.00%	0.30%	0.38%	0.11%	0.00%	0.60%
CHO 6	3.86%	0.40%	4.26%	0.00%	0.27%	0.38%	0.11%	0.00%	0.58%
Dublin South City	1.14%	0.00%	1.14%			0.00%			0.00%
Dublin South-West	5.79%	0.21%	6.00%	0.00%	0.15%	0.16%	0.00%	0.00%	0.34%
Dublin West	4.24%	0.78%	5.02%	0.00%	0.49%	2.48%	0.31%	0.51%	0.63%
Kildare/ West Wicklow	4.14%	0.35%	4.48%		0.00%	0.41%	0.00%	0.00%	0.45%
CHO 7	4.75%	0.52%	5.27%	0.00%	0.31%	0.83%	0.15%	0.33%	0.52%
Laois /Offaly	4.78%	0.80%	5.58%		0.25%	1.50%	0.00%	0.00%	0.67%
Longford/ Westmeath	4.40%	0.35%	4.75%	0.00%	0.19%	0.27%	0.00%	1.66%	0.45%
Louth	4.80%	0.55%	5.35%	0.00%	0.36%	0.00%	0.00%	1.20%	0.83%
Meath	9.53%	0.33%	9.86%		0.00%	0.00%	0.00%		0.75%
CHO 8	4.98%	0.58%	5.55%	0.00%	0.28%	0.78%	0.00%	0.77%	0.67%
Dublin North	7.85%	0.54%	8.39%	0.00%	0.64%	0.00%	0.74%	0.00%	0.46%
Dublin North Central	5.51%	0.34%	5.84%	0.00%	0.41%	0.31%	0.38%	0.00%	0.38%
Dublin North-West	3.68%	0.18%	3.87%	0.00%	0.34%	0.11%	0.21%	0.32%	0.09%
CHO 9	5.16%	0.31%	5.47%	0.00%	0.44%	0.26%	0.36%	0.16%	0.28%

Other Community Services	0.00%	0.00%	0.00%
Other Community Services	0.00%	0.00%	0.00%
Community Services	5.51%	0.44%	5.95%

			0.00%		
			0.00%		
0.00%	0.43%	0.45%	0.36%	0.41%	0.46%

September 2024

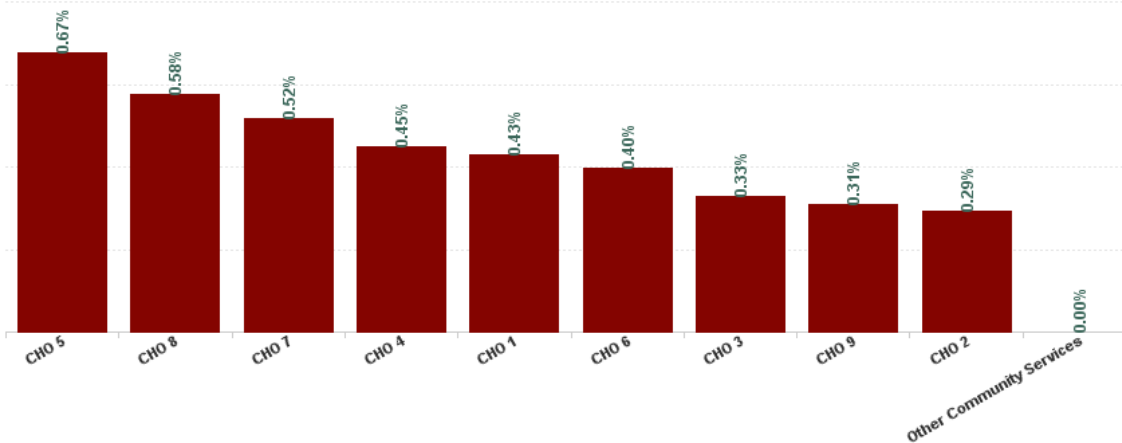
Health Service Absence Rate - by HG, CHO/Care Group & Staff Category- Sep 2024	Certified absence	Self-certified absence	Non Covid-19 absence	Covid-19 Absence	Total absence rate	Medical & Dental	Nursing & Midwifery	Health & Social Care Professionals	Management & Administrative	General Support	Patient & Client Care
Total	4.99%	0.52%	5.51%	0.44%	5.95%	2.61%	6.92%	4.97%	4.59%	5.97%	6.28%
Health Service Executive	8.07%	0.61%	8.67%	0.43%	9.11%	0.00%	11.60%	6.36%	6.77%	3.06%	8.83%
CHO 1	8.07%	0.61%	8.67%	0.43%	9.11%	0.00%	11.60%	6.36%	6.77%	3.06%	8.83%
Health Service Executive	7.95%	0.26%	8.21%	0.28%	8.49%	0.00%	15.71%	5.89%	7.21%	0.00%	9.85%
Section 38 Voluntary Agencies	4.26%	0.42%	4.68%	0.29%	4.97%	0.00%	4.44%	4.66%	4.09%	6.26%	5.28%
CHO 2	4.87%	0.39%	5.27%	0.29%	5.56%	0.00%	6.57%	4.97%	5.05%	5.56%	5.73%
Health Service Executive	9.48%	0.98%	10.46%	0.56%	11.02%		4.76%	8.77%	11.32%	2.59%	14.22%
Section 38 Voluntary Agencies	4.48%	0.37%	4.85%	0.31%	5.16%	0.00%	5.48%	3.44%	4.36%	5.48%	5.65%
CHO 3	4.80%	0.41%	5.21%	0.33%	5.54%	0.00%	5.48%	3.84%	6.88%	5.10%	5.99%
Health Service Executive	6.16%	0.76%	6.93%	0.46%	7.39%	0.00%	7.83%	14.79%	2.77%	2.86%	7.40%
Section 38 Voluntary Agencies	4.44%	0.79%	5.23%	0.45%	5.67%		7.29%	5.11%	3.23%	8.22%	5.54%
CHO 4	4.63%	0.78%	5.41%	0.45%	5.86%	0.00%	7.36%	5.91%	3.11%	7.35%	5.70%
Health Service Executive	6.32%	0.58%	6.90%	0.69%	7.59%	0.00%	10.75%	6.24%	4.14%		7.95%
Section 38 Voluntary Agencies	7.09%	0.52%	7.61%	0.67%	8.28%	84.09%	10.90%	11.74%	5.60%	5.87%	7.43%
CHO 5	6.91%	0.54%	7.44%	0.67%	8.12%	30.33%	10.84%	9.55%	4.96%	5.87%	7.50%
Health Service Executive	5.81%	0.64%	6.44%	1.12%	7.57%	0.00%	6.78%	8.72%	8.91%		7.51%
Section 38 Voluntary Agencies	2.85%	0.53%	3.38%	0.26%	3.64%	0.00%	2.92%	4.58%	1.77%	0.09%	3.75%
CHO 6	3.32%	0.55%	3.86%	0.40%	4.26%	0.00%	4.25%	4.85%	2.94%	0.09%	4.42%
Health Service Executive	4.26%	0.37%	4.63%	0.31%	4.94%		0.00%	2.48%	7.40%		11.15%
Section 38 Voluntary Agencies	4.15%	0.60%	4.75%	0.52%	5.27%	4.28%	5.52%	4.89%	3.33%	6.57%	5.45%
CHO 7	4.15%	0.60%	4.75%	0.52%	5.27%	4.28%	5.50%	4.74%	3.87%	6.57%	5.47%
Health Service Executive	7.44%	0.55%	7.99%	0.18%	8.17%	0.00%	7.70%	5.24%	4.10%	0.00%	11.68%
Section 38 Voluntary Agencies	3.77%	0.32%	4.09%	0.69%	4.78%	0.00%	5.14%	4.84%	2.91%	4.94%	4.79%
CHO 8	4.61%	0.37%	4.98%	0.58%	5.55%	0.00%	5.95%	4.92%	3.50%	4.35%	6.00%
Health Service Executive	6.58%	0.65%	7.23%	0.59%	7.82%	0.00%	9.46%	0.34%	4.10%	11.92%	8.94%
Section 38 Voluntary Agencies	4.50%	0.38%	4.88%	0.27%	5.15%	0.49%	4.55%	4.19%	5.60%	7.04%	6.53%
CHO 9	4.75%	0.41%	5.16%	0.31%	5.47%	0.41%	5.69%	4.06%	5.39%	7.35%	6.89%
Health Service Executive	0.00%	0.00%	0.00%	0.00%	0.00%				0.00%		
Other Community Services	0.00%	0.00%	0.00%	0.00%	0.00%				0.00%		
Community Services	4.99%	0.52%	5.51%	0.44%	5.95%	2.61%	6.92%	4.97%	4.59%	5.97%	6.28%



September 2024

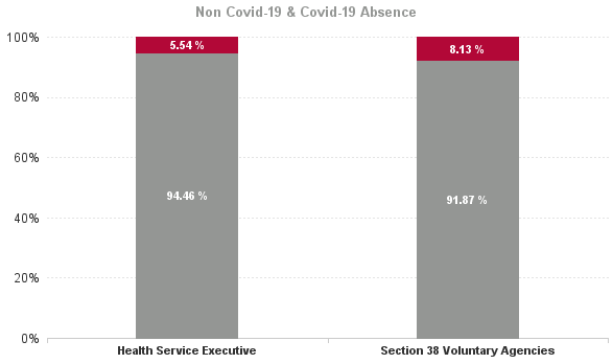
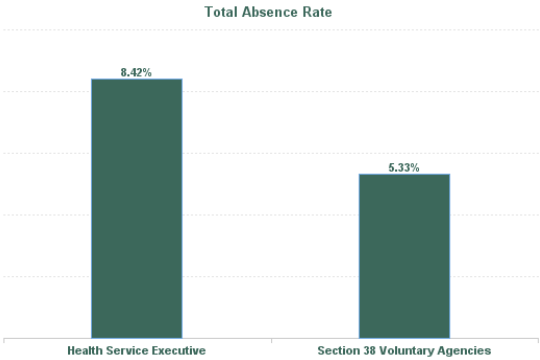
Health Service Covid 19 Absence Rate - by Hospital & Staff Category: Sep 2024	Non Covid-19 absence	Covid-19 Absence	Total absence rate	Medical & Dental	Nursing & Midwifery	Health & Social Care Professionals	Management & Administrative	General Support	Patient & Client Care
Disabilities	5.51%	0.44%	5.95%	0.00%	0.43%	0.45%	0.36%	0.41%	0.46%
Health Service Executive	8.67%	0.43%	9.11%	0.00%	0.43%	0.40%	1.31%	0.00%	0.35%
CHO 1	8.67%	0.43%	9.11%	0.00%	0.43%	0.40%	1.31%	0.00%	0.35%
Health Service Executive	8.21%	0.28%	8.49%	0.00%	1.26%	0.07%	0.00%	0.00%	0.26%
Section 38 Voluntary Agencies	4.68%	0.29%	4.97%	0.00%	0.12%	0.26%	0.00%	0.13%	0.39%
CHO 2	5.27%	0.29%	5.56%	0.00%	0.33%	0.21%	0.00%	0.11%	0.38%
Health Service Executive	10.46%	0.56%	11.02%		0.00%	0.00%	0.97%	0.00%	0.60%
Section 38 Voluntary Agencies	4.85%	0.31%	5.16%	0.00%	0.32%	0.17%	0.38%	0.00%	0.37%
CHO 3	5.21%	0.33%	5.54%	0.00%	0.32%	0.15%	0.59%	0.00%	0.38%
Health Service Executive	6.93%	0.46%	7.39%	0.00%	0.50%	0.76%	0.37%	0.00%	0.45%
Section 38 Voluntary Agencies	5.23%	0.45%	5.67%		0.60%	0.15%	0.53%	1.50%	0.44%
CHO 4	5.41%	0.45%	5.86%	0.00%	0.59%	0.20%	0.48%	1.26%	0.44%
Health Service Executive	6.90%	0.69%	7.59%	0.00%	1.01%	0.00%	1.09%		0.79%
Section 38 Voluntary Agencies	7.61%	0.67%	8.28%	0.00%	1.05%	1.55%	0.23%	2.92%	0.45%
CHO 5	7.44%	0.67%	8.12%	0.00%	1.03%	0.93%	0.61%	2.92%	0.49%
Health Service Executive	6.44%	1.12%	7.57%	0.00%	0.35%	3.55%	0.00%		1.17%
Section 38 Voluntary Agencies	3.38%	0.26%	3.64%	0.00%	0.22%	0.15%	0.13%	0.00%	0.45%
CHO 6	3.86%	0.40%	4.26%	0.00%	0.27%	0.38%	0.11%	0.00%	0.58%
Health Service Executive	4.63%	0.31%	4.94%		0.00%	0.58%	0.00%		0.00%
Section 38 Voluntary Agencies	4.75%	0.52%	5.27%	0.00%	0.31%	0.85%	0.17%	0.33%	0.53%
CHO 7	4.75%	0.52%	5.27%	0.00%	0.31%	0.83%	0.15%	0.33%	0.52%
Health Service Executive	7.99%	0.18%	8.17%	0.00%	0.11%	0.05%	0.00%	0.00%	0.38%
Section 38 Voluntary Agencies	4.09%	0.69%	4.78%	0.00%	0.36%	0.96%	0.00%	0.87%	0.74%
CHO 8	4.98%	0.58%	5.55%	0.00%	0.28%	0.78%	0.00%	0.77%	0.67%
Health Service Executive	7.23%	0.59%	7.82%	0.00%	0.64%	0.23%	1.47%	0.00%	0.45%
Section 38 Voluntary Agencies	4.88%	0.27%	5.15%	0.00%	0.38%	0.27%	0.19%	0.17%	0.25%
CHO 9	5.16%	0.31%	5.47%	0.00%	0.44%	0.26%	0.36%	0.16%	0.28%
Health Service Executive	0.00%	0.00%	0.00%				0.00%		
Other Community Services	0.00%	0.00%	0.00%				0.00%		
Community Services	5.51%	0.44%	5.95%	0.00%	0.43%	0.45%	0.36%	0.41%	0.46%

Covid 19 Absence Rate



September 2024

Health Service Absence Rate - by Admin : Sep 2024	Certified absence	Self-certified absence	Non Covid-19 absence	Covid-19 Absence	Total absence rate	Medical & Dental	Nursing & Midwifery	Health & Social Care Professionals	Management & Administrative	General Support	Patient & Client Care
Total	4.99%	0.52%	5.51%	0.44%	5.95%	2.61%	6.92%	4.97%	4.59%	5.97%	6.28%
Health Service Executive	7.35%	0.59%	7.95%	0.47%	8.42%	0.00%	10.23%	6.12%	5.93%	3.67%	9.12%
Section 38 Voluntary Agencies	4.39%	0.50%	4.90%	0.43%	5.33%	3.40%	5.59%	4.79%	3.98%	6.26%	5.63%



Health Service Absence Rate - by Staff Category: Sep 2024	Certified absence	Self-certified absence	Non Covid-19 absence	Covid-19 Absence	Total absence rate	% Non Covid-19 absence	% Covid-19 absence
CHO 1	8.07%	0.61%	8.67%	0.43%	9.11%	95.27%	4.73%
Medical & Dental	0.00%	0.00%	0.00%	0.00%	0.00%		
Nursing & Midwifery	10.49%	0.68%	11.16%	0.43%	11.60%	96.25%	3.75%
Health & Social Care Professionals	5.76%	0.20%	5.96%	0.40%	6.36%	93.68%	6.32%
Management & Administrative	4.95%	0.51%	5.46%	1.31%	6.77%	80.64%	19.36%
General Support	3.06%	0.00%	3.06%	0.00%	3.06%	100.00%	0.00%
Patient & Client Care	7.82%	0.66%	8.48%	0.35%	8.83%	96.05%	3.95%

Health Service Absence Rate - by Staff Category: Sep 2024	Certified absence	Self-certified absence	Non Covid-19 absence	Covid-19 Absence	Total absence rate	% Non Covid-19 absence	% Covid-19 absence
CHO 2	4.87%	0.39%	5.27%	0.29%	5.56%	94.76%	5.24%
Medical & Dental	0.00%	0.00%	0.00%	0.00%	0.00%		
Nursing & Midwifery	5.94%	0.30%	6.24%	0.33%	6.57%	94.92%	5.08%
Health & Social Care Professionals	4.50%	0.26%	4.75%	0.21%	4.97%	95.68%	4.32%
Management & Administrative	4.64%	0.41%	5.05%	0.00%	5.05%	100.00%	0.00%
General Support	5.02%	0.42%	5.44%	0.11%	5.56%	97.97%	2.03%
Patient & Client Care	4.86%	0.49%	5.34%	0.38%	5.73%	93.35%	6.65%

Health Service Absence Rate - by Staff Category: Sep 2024	Certified absence	Self-certified absence	Non Covid-19 absence	Covid-19 Absence	Total absence rate	% Non Covid-19 absence	% Covid-19 absence
CHO 3	4.80%	0.41%	5.21%	0.33%	5.54%	94.05%	5.95%
Medical & Dental	0.00%	0.00%	0.00%	0.00%	0.00%		
Nursing & Midwifery	4.73%	0.42%	5.15%	0.32%	5.48%	94.12%	5.88%
Health & Social Care Professionals	3.43%	0.25%	3.68%	0.15%	3.84%	95.97%	4.03%
Management & Administrative	5.42%	0.87%	6.29%	0.59%	6.88%	91.42%	8.58%
General Support	5.01%	0.09%	5.10%	0.00%	5.10%	100.00%	0.00%
Patient & Client Care	5.18%	0.42%	5.60%	0.38%	5.99%	93.63%	6.37%

Health Service Absence Rate - by Staff Category: Sep 2024	Certified absence	Self-certified absence	Non Covid-19 absence	Covid-19 Absence	Total absence rate	% Non Covid-19 absence	% Covid-19 absence
CHO 4	4.63%	0.78%	5.41%	0.45%	5.86%	92.32%	7.68%
Medical & Dental	0.00%	0.00%	0.00%	0.00%	0.00%		
Nursing & Midwifery	5.74%	1.02%	6.77%	0.59%	7.36%	92.01%	7.99%
Health & Social Care Professionals	5.08%	0.63%	5.71%	0.20%	5.91%	96.60%	3.40%
Management & Administrative	2.14%	0.49%	2.62%	0.48%	3.11%	84.41%	15.59%
General Support	5.32%	0.78%	6.10%	1.26%	7.35%	82.90%	17.10%
Patient & Client Care	4.46%	0.80%	5.27%	0.44%	5.70%	92.31%	7.69%

Health Service Absence Rate - by Staff Category: Sep 2024	Certified absence	Self-certified absence	Non Covid-19 absence	Covid-19 Absence	Total absence rate	% Non Covid-19 absence	% Covid-19 absence
CHO 5	6.91%	0.54%	7.44%	0.67%	8.12%	91.69%	8.31%
Medical & Dental	30.33%	0.00%	30.33%	0.00%	30.33%	100.00%	0.00%
Nursing & Midwifery	9.14%	0.67%	9.80%	1.03%	10.84%	90.47%	9.53%
Health & Social Care Professionals	8.37%	0.25%	8.62%	0.93%	9.55%	90.24%	9.76%
Management & Administrative	3.59%	0.75%	4.34%	0.61%	4.96%	87.64%	12.36%
General Support	2.39%	0.56%	2.95%	2.92%	5.87%	50.27%	49.73%
Patient & Client Care	6.46%	0.55%	7.01%	0.49%	7.50%	93.44%	6.56%

Health Service Absence Rate - by Staff Category: Sep 2024	Certified absence	Self-certified absence	Non Covid-19 absence	Covid-19 Absence	Total absence rate	% Non Covid-19 absence	% Covid-19 absence
CHO 6	3.32%	0.55%	3.86%	0.40%	4.26%	90.70%	9.30%
Medical & Dental	0.00%	0.00%	0.00%	0.00%	0.00%		
Nursing & Midwifery	3.33%	0.65%	3.98%	0.27%	4.25%	93.75%	6.25%
Health & Social Care Professionals	3.86%	0.62%	4.48%	0.38%	4.85%	92.21%	7.79%
Management & Administrative	2.55%	0.28%	2.84%	0.11%	2.94%	96.32%	3.68%
General Support	0.00%	0.09%	0.09%	0.00%	0.09%	100.00%	0.00%
Patient & Client Care	3.29%	0.55%	3.84%	0.58%	4.42%	86.91%	13.09%

Health Service Absence Rate - by Staff Category: Sep 2024	Certified absence	Self-certified absence	Non Covid-19 absence	Covid-19 Absence	Total absence rate	% Non Covid-19 absence	% Covid-19 absence
CHO 7	4.15%	0.60%	4.75%	0.52%	5.27%	90.20%	9.80%
Medical & Dental	3.28%	1.00%	4.28%	0.00%	4.28%	100.00%	0.00%
Nursing & Midwifery	4.32%	0.87%	5.19%	0.31%	5.50%	94.34%	5.66%
Health & Social Care Professionals	3.45%	0.46%	3.91%	0.83%	4.74%	82.48%	17.52%
Management & Administrative	3.58%	0.14%	3.72%	0.15%	3.87%	96.11%	3.89%
General Support	5.71%	0.52%	6.23%	0.33%	6.57%	94.94%	5.06%
Patient & Client Care	4.30%	0.65%	4.95%	0.52%	5.47%	90.41%	9.59%

Health Service Absence Rate - by Staff Category: Sep 2024	Certified absence	Self-certified absence	Non Covid-19 absence	Covid-19 Absence	Total absence rate	% Non Covid-19 absence	% Covid-19 absence
CHO 8	4.61%	0.37%	4.98%	0.58%	5.55%	89.63%	10.37%
Medical & Dental	0.00%	0.00%	0.00%	0.00%	0.00%		
Nursing & Midwifery	5.24%	0.44%	5.67%	0.28%	5.95%	95.29%	4.71%
Health & Social Care Professionals	3.78%	0.36%	4.14%	0.78%	4.92%	84.05%	15.95%
Management & Administrative	3.14%	0.36%	3.50%	0.00%	3.50%	100.00%	0.00%
General Support	3.19%	0.39%	3.58%	0.77%	4.35%	82.34%	17.66%
Patient & Client Care	4.97%	0.36%	5.33%	0.67%	6.00%	88.79%	11.21%

Health Service Absence Rate - by Staff Category: Sep 2024	Certified absence	Self-certified absence	Non Covid-19 absence	Covid-19 Absence	Total absence rate	% Non Covid-19 absence	% Covid-19 absence
CHO 9	4.75%	0.41%	5.16%	0.31%	5.47%	94.38%	5.62%
Medical & Dental	0.41%	0.00%	0.41%	0.00%	0.41%	100.00%	0.00%
Nursing & Midwifery	4.65%	0.60%	5.25%	0.44%	5.69%	92.28%	7.72%
Health & Social Care Professionals	3.50%	0.30%	3.80%	0.26%	4.06%	93.49%	6.51%
Management & Administrative	4.83%	0.20%	5.03%	0.36%	5.39%	93.27%	6.73%
General Support	6.78%	0.41%	7.19%	0.16%	7.35%	97.88%	2.12%
Patient & Client Care	6.13%	0.48%	6.61%	0.28%	6.89%	95.97%	4.03%

Health Service Absence Rate - by Staff Category: Sep 2024	Certified absence	Self-certified absence	Non Covid-19 absence	Covid-19 Absence	Total absence rate	% Non Covid-19 absence	% Covid-19 absence
Other Comm	0.00%	0.00%	0.00%	0.00%	0.00%		
Medical & Dental							
Nursing & Midwifery							
Health & Social Care Professionals							
Management & Administrative	0.00%	0.00%	0.00%	0.00%	0.00%		
General Support							
Patient & Client Care							

Health Service Absence Rate - by Staff Category: Sep 2024	Certified absence	Self- certified absence	Non Covid-19 absence	Covid-19 Absence	Total absence rate	% Non Covid-19 absence	% Covid-19 absence
Aurora	5.83%	0.60%	6.43%	0.15%	6.58%	97.74%	2.26%
Medical & Dental							
Nursing & Midwifery	7.33%	0.00%	7.33%	0.00%	7.33%	100.00%	0.00%
Health & Social Care Professionals	6.29%	0.25%	6.54%	0.00%	6.54%	100.00%	0.00%
Management & Administrative	0.00%	3.14%	3.14%	0.73%	3.87%	81.08%	18.92%
General Support	0.00%	0.00%	0.00%	0.00%	0.00%		
Patient & Client Care	6.42%	0.43%	6.86%	0.12%	6.98%	98.22%	1.78%

Health Service Absence Rate - by Staff Category: Sep 2024	Certified absence	Self- certified absence	Non Covid-19 absence	Covid-19 Absence	Total absence rate	% Non Covid-19 absence	% Covid-19 absence
Avista Dublin	3.15%	0.54%	3.68%	0.18%	3.87%	95.27%	4.73%
Medical & Dental	0.00%	0.00%	0.00%	0.00%	0.00%		
Nursing & Midwifery	3.04%	0.78%	3.82%	0.34%	4.16%	91.76%	8.24%
Health & Social Care Professionals	2.54%	0.43%	2.97%	0.11%	3.09%	96.37%	3.63%
Management & Administrative	3.61%	0.05%	3.66%	0.21%	3.86%	94.68%	5.32%
General Support	2.52%	0.34%	2.86%	0.32%	3.18%	89.87%	10.13%
Patient & Client Care	3.72%	0.60%	4.32%	0.09%	4.42%	97.89%	2.11%

Health Service Absence Rate - by Staff Category: Sep 2024	Certified absence	Self- certified absence	Non Covid-19 absence	Covid-19 Absence	Total absence rate	% Non Covid-19 absence	% Covid-19 absence
Avista Limerick	4.76%	0.26%	5.02%	0.42%	5.44%	92.19%	7.81%
Medical & Dental							
Nursing & Midwifery	3.72%	0.27%	3.99%	0.59%	4.58%	87.16%	12.84%
Health & Social Care Professionals	5.47%	0.45%	5.92%	0.34%	6.26%	94.55%	5.45%
Management & Administrative	3.49%	0.00%	3.49%	0.38%	3.87%	90.10%	9.90%
General Support	6.36%	0.00%	6.36%	0.00%	6.36%	100.00%	0.00%
Patient & Client Care	5.32%	0.25%	5.57%	0.42%	6.00%	92.97%	7.03%

Health Service Absence Rate - by Staff Category: Sep 2024	Certified absence	Self- certified absence	Non Covid-19 absence	Covid-19 Absence	Total absence rate	% Non Covid-19 absence	% Covid-19 absence
Avista Roscrea	3.95%	0.27%	4.22%	0.71%	4.93%	85.61%	14.39%
Medical & Dental							
Nursing & Midwifery	4.24%	0.18%	4.42%	0.00%	4.42%	100.00%	0.00%
Health & Social Care Professionals	1.94%	0.16%	2.10%	0.71%	2.81%	74.82%	25.18%
Management & Administrative	6.07%	0.00%	6.07%	0.00%	6.07%	100.00%	0.00%
General Support	0.78%	0.00%	0.78%	0.00%	0.78%	100.00%	0.00%
Patient & Client Care	4.17%	0.33%	4.50%	0.92%	5.41%	83.09%	16.91%

Health Service Absence Rate - by Staff Category: Sep 2024	Certified absence	Self-certified absence	Non Covid-19 absence	Covid-19 Absence	Total absence rate	% Non Covid-19 absence	% Covid-19 absence
Bros. of Charity, Clare	3.99%	0.32%	4.31%	0.30%	4.62%	93.44%	6.56%
Medical & Dental	0.00%	0.00%	0.00%	0.00%	0.00%		
Nursing & Midwifery	0.00%	0.00%	0.00%	0.00%	0.00%		
Health & Social Care Professionals	1.59%	0.12%	1.71%	0.00%	1.71%	100.00%	0.00%
Management & Administrative	1.95%	0.50%	2.45%	1.16%	3.61%	67.82%	32.18%
General Support							
Patient & Client Care	4.69%	0.37%	5.06%	0.34%	5.40%	93.71%	6.29%

Health Service Absence Rate - by Staff Category: Sep 2024	Certified absence	Self-certified absence	Non Covid-19 absence	Covid-19 Absence	Total absence rate	% Non Covid-19 absence	% Covid-19 absence
Bros. of Charity, Limerick	4.89%	0.56%	5.46%	0.00%	5.46%	100.00%	0.00%
Medical & Dental							
Nursing & Midwifery	6.74%	0.77%	7.50%	0.00%	7.50%	100.00%	0.00%
Health & Social Care Professionals	2.41%	0.18%	2.59%	0.00%	2.59%	100.00%	0.00%
Management & Administrative	3.88%	0.55%	4.44%	0.00%	4.44%	100.00%	0.00%
General Support	4.32%	0.77%	5.09%	0.00%	5.09%	100.00%	0.00%
Patient & Client Care	5.28%	0.63%	5.91%	0.00%	5.91%	100.00%	0.00%

Health Service Absence Rate - by Staff Category: Sep 2024	Certified absence	Self-certified absence	Non Covid-19 absence	Covid-19 Absence	Total absence rate	% Non Covid-19 absence	% Covid-19 absence
Bros. of Charity, Southern	4.12%	0.48%	4.60%	0.19%	4.79%	96.08%	3.92%
Medical & Dental							
Nursing & Midwifery	6.69%	0.09%	6.79%	0.15%	6.93%	97.86%	2.14%
Health & Social Care Professionals	4.94%	0.58%	5.52%	0.09%	5.61%	98.42%	1.58%
Management & Administrative	4.17%	0.25%	4.43%	0.00%	4.43%	100.00%	0.00%
General Support	2.94%	1.07%	4.02%	2.15%	6.16%	65.15%	34.85%
Patient & Client Care	3.41%	0.49%	3.90%	0.20%	4.10%	95.06%	4.94%

Health Service Absence Rate - by Staff Category: Sep 2024	Certified absence	Self-certified absence	Non Covid-19 absence	Covid-19 Absence	Total absence rate	% Non Covid-19 absence	% Covid-19 absence
Bros. of Charity, Waterford	8.19%	0.53%	8.72%	0.78%	9.49%	91.82%	8.18%
Medical & Dental	84.09%	0.00%	84.09%	0.00%	84.09%	100.00%	0.00%
Nursing & Midwifery	10.18%	0.28%	10.46%	0.70%	11.16%	93.71%	6.29%
Health & Social Care Professionals	11.47%	0.22%	11.69%	2.27%	13.96%	83.76%	16.24%
Management & Administrative	7.47%	0.11%	7.58%	0.00%	7.58%	100.00%	0.00%
General Support	6.90%	0.68%	7.57%	0.00%	7.57%	100.00%	0.00%
Patient & Client Care	7.27%	0.65%	7.93%	0.60%	8.52%	93.00%	7.00%

Health Service Absence Rate - by Staff Category: Sep 2024	Certified absence	Self- certified absence	Non Covid-19 absence	Covid-19 Absence	Total absence rate	% Non Covid-19 absence	% Covid-19 absence
Bros. of Charity, West Region	4.26%	0.42%	4.68%	0.29%	4.97%	94.10%	5.90%
Medical & Dental	0.00%	0.00%	0.00%	0.00%	0.00%		
Nursing & Midwifery	4.03%	0.28%	4.32%	0.12%	4.44%	97.33%	2.67%
Health & Social Care Professionals	4.13%	0.27%	4.40%	0.26%	4.66%	94.34%	5.66%
Management & Administrative	3.64%	0.44%	4.09%	0.00%	4.09%	100.00%	0.00%
General Support	5.65%	0.48%	6.13%	0.13%	6.26%	97.97%	2.03%
Patient & Client Care	4.37%	0.51%	4.88%	0.39%	5.28%	92.53%	7.47%

Health Service Absence Rate - by Staff Category: Sep 2024	Certified absence	Self- certified absence	Non Covid-19 absence	Covid-19 Absence	Total absence rate	% Non Covid-19 absence	% Covid-19 absence
Carriglea Cairde Services	3.94%	0.36%	4.31%	1.06%	5.36%	80.29%	19.71%
Medical & Dental							
Nursing & Midwifery	9.36%	1.48%	10.84%	3.01%	13.85%	78.27%	21.73%
Health & Social Care Professionals	8.70%	0.00%	8.70%	0.53%	9.23%	94.21%	5.79%
Management & Administrative	0.00%	0.00%	0.00%	0.00%	0.00%		
General Support	0.00%	0.97%	0.97%	8.58%	9.56%	10.16%	89.84%
Patient & Client Care	1.68%	0.08%	1.76%	0.23%	2.00%	88.27%	11.73%

Health Service Absence Rate - by Staff Category: Sep 2024	Certified absence	Self-certified absence	Non Covid-19 absence	Covid-19 Absence	Total absence rate	% Non Covid-19 absence	% Covid-19 absence
Central Remedial Clinic	6.73%	0.35%	7.08%	0.05%	7.13%	99.29%	0.71%
Medical & Dental	0.00%	0.00%	0.00%	0.00%	0.00%		
Nursing & Midwifery	7.13%	0.67%	7.80%	0.00%	7.80%	100.00%	0.00%
Health & Social Care Professionals	3.66%	0.37%	4.03%	0.10%	4.13%	97.52%	2.48%
Management & Administrative	10.78%	0.11%	10.89%	0.00%	10.89%	100.00%	0.00%
General Support	3.40%	1.76%	5.15%	0.00%	5.15%	100.00%	0.00%
Patient & Client Care	10.49%	0.21%	10.70%	0.00%	10.70%	100.00%	0.00%

Health Service Absence Rate - by Staff Category: Sep 2024	Certified absence	Self-certified absence	Non Covid-19 absence	Covid-19 Absence	Total absence rate	% Non Covid-19 absence	% Covid-19 absence
Cheeverstown House	6.29%	1.22%	7.51%	0.25%	7.76%	96.77%	3.23%
Medical & Dental							
Nursing & Midwifery	6.27%	1.29%	7.56%	0.10%	7.66%	98.74%	1.26%
Health & Social Care Professionals	5.89%	0.69%	6.57%	0.00%	6.57%	100.00%	0.00%
Management & Administrative	3.10%	0.00%	3.10%	0.00%	3.10%	100.00%	0.00%
General Support	17.82%	0.43%	18.25%	0.00%	18.25%	100.00%	0.00%
Patient & Client Care	5.41%	1.63%	7.04%	0.50%	7.54%	93.36%	6.64%

Health Service Absence Rate - by Staff Category: Sep 2024	Certified absence	Self-certified absence	Non Covid-19 absence	Covid-19 Absence	Total absence rate	% Non Covid-19 absence	% Covid-19 absence
Children's Sunshine Home	1.62%	1.33%	2.95%	0.00%	2.95%	100.00%	0.00%
Medical & Dental							
Nursing & Midwifery	2.08%	2.12%	4.20%	0.00%	4.20%	100.00%	0.00%
Health & Social Care Professionals	0.00%	0.00%	0.00%	0.00%	0.00%		
Management & Administrative	4.21%	0.00%	4.21%	0.00%	4.21%	100.00%	0.00%
General Support	0.00%	0.00%	0.00%	0.00%	0.00%		
Patient & Client Care	0.00%	0.95%	0.95%	0.00%	0.95%	100.00%	0.00%

Health Service Absence Rate - by Staff Category: Sep 2024	Certified absence	Self-certified absence	Non Covid-19 absence	Covid-19 Absence	Total absence rate	% Non Covid-19 absence	% Covid-19 absence
Cope Foundation	4.52%	1.03%	5.56%	0.66%	6.21%	89.44%	10.56%
Medical & Dental							
Nursing & Midwifery	4.76%	1.39%	6.14%	0.63%	6.78%	90.65%	9.35%
Health & Social Care Professionals	2.79%	0.50%	3.28%	0.31%	3.60%	91.25%	8.75%
Management & Administrative	0.81%	0.60%	1.42%	0.22%	1.64%	86.36%	13.64%
General Support	8.02%	0.58%	8.60%	2.21%	10.81%	79.55%	20.45%
Patient & Client Care	4.94%	1.09%	6.03%	0.69%	6.72%	89.74%	10.26%

Health Service Absence Rate - by Staff Category: Sep 2024	Certified absence	Self-certified absence	Non Covid-19 absence	Covid-19 Absence	Total absence rate	% Non Covid-19 absence	% Covid-19 absence
Kare, Newbridge, Co Kildare	3.34%	0.63%	3.97%	0.33%	4.30%	92.40%	7.60%
Medical & Dental							
Nursing & Midwifery	3.09%	0.33%	3.42%	0.00%	3.42%	100.00%	0.00%
Health & Social Care Professionals	2.55%	0.75%	3.30%	0.25%	3.54%	93.07%	6.93%
Management & Administrative	2.99%	0.27%	3.26%	0.00%	3.26%	100.00%	0.00%
General Support	0.00%	0.00%	0.00%	0.00%	0.00%		
Patient & Client Care	3.85%	0.66%	4.51%	0.45%	4.96%	90.89%	9.11%

Health Service Absence Rate - by Staff Category: Sep 2024	Certified absence	Self-certified absence	Non Covid-19 absence	Covid-19 Absence	Total absence rate	% Non Covid-19 absence	% Covid-19 absence
Muiriosa Foundation, Laois/Offaly	4.90%	0.27%	5.18%	1.07%	6.25%	82.86%	17.14%
Medical & Dental							
Nursing & Midwifery	5.41%	0.00%	5.41%	0.21%	5.62%	96.24%	3.76%
Health & Social Care Professionals	5.23%	0.16%	5.39%	2.26%	7.65%	70.52%	29.48%
Management & Administrative	5.97%	0.34%	6.31%	0.00%	6.31%	100.00%	0.00%
General Support	0.00%	0.00%	0.00%	0.00%	0.00%		
Patient & Client Care	4.64%	0.39%	5.02%	0.62%	5.65%	88.96%	11.04%

Health Service Absence Rate - by Staff Category: Sep 2024	Certified absence	Self-certified absence	Non Covid-19 absence	Covid-19 Absence	Total absence rate	% Non Covid-19 absence	% Covid-19 absence
Muiriosa Foundation, Longford/W	2.40%	0.33%	2.73%	0.44%	3.17%	86.06%	13.94%
Medical & Dental							
Nursing & Midwifery	1.66%	0.54%	2.19%	0.00%	2.19%	100.00%	0.00%
Health & Social Care Professionals	1.37%	0.41%	1.78%	0.33%	2.10%	84.42%	15.58%
Management & Administrative	0.00%	0.00%	0.00%	0.00%	0.00%		
General Support	0.00%	0.00%	0.00%	3.50%	3.50%	0.00%	100.00%
Patient & Client Care	3.34%	0.30%	3.64%	0.51%	4.15%	87.63%	12.37%

Health Service Absence Rate - by Staff Category: Sep 2024	Certified absence	Self-certified absence	Non Covid-19 absence	Covid-19 Absence	Total absence rate	% Non Covid-19 absence	% Covid-19 absence
Muiriosa Foundation, South Kilda	3.67%	0.48%	4.15%	0.68%	4.84%	85.84%	14.16%
Medical & Dental							
Nursing & Midwifery	4.73%	0.85%	5.58%	0.40%	5.98%	93.32%	6.68%
Health & Social Care Professionals	3.03%	0.65%	3.69%	0.85%	4.53%	81.34%	18.66%
Management & Administrative	3.39%	0.34%	3.73%	0.00%	3.73%	100.00%	0.00%
General Support	0.00%	0.76%	0.76%	0.00%	0.76%	100.00%	0.00%
Patient & Client Care	4.18%	0.29%	4.47%	0.85%	5.32%	84.00%	16.00%

Health Service Absence Rate - by Staff Category: Sep 2024	Certified absence	Self-certified absence	Non Covid-19 absence	Covid-19 Absence	Total absence rate	% Non Covid-19 absence	% Covid-19 absence
Peamount Hospital (Newcastle)	3.51%	0.87%	4.38%	1.39%	5.78%	75.88%	24.12%
Medical & Dental	3.56%	1.09%	4.65%	0.00%	4.65%	100.00%	0.00%
Nursing & Midwifery	2.71%	1.06%	3.77%	0.70%	4.48%	84.26%	15.74%
Health & Social Care Professionals	6.17%	0.42%	6.59%	6.52%	13.11%	50.24%	49.76%
Management & Administrative	2.74%	0.20%	2.93%	0.87%	3.80%	77.20%	22.80%
General Support	3.61%	0.88%	4.49%	0.31%	4.80%	93.58%	6.42%
Patient & Client Care	3.36%	0.99%	4.35%	0.77%	5.12%	84.99%	15.01%

Health Service Absence Rate - by Staff Category: Sep 2024	Certified absence	Self-certified absence	Non Covid-19 absence	Covid-19 Absence	Total absence rate	% Non Covid-19 absence	% Covid-19 absence
Stewart's Hospital, (Palmerstown)	3.79%	0.36%	4.15%	0.50%	4.65%	89.35%	10.65%
Medical & Dental							
Nursing & Midwifery	3.23%	0.38%	3.60%	0.23%	3.84%	93.89%	6.11%
Health & Social Care Professionals	4.48%	0.39%	4.87%	0.37%	5.24%	93.02%	6.98%
Management & Administrative	2.32%	0.06%	2.38%	0.00%	2.38%	100.00%	0.00%
General Support	2.49%	0.53%	3.02%	0.65%	3.67%	82.24%	17.76%
Patient & Client Care	4.03%	0.37%	4.40%	0.58%	4.99%	88.28%	11.72%

Health Service Absence Rate - by Staff Category: Sep 2024	Certified absence	Self-certified absence	Non Covid-19 absence	Covid-19 Absence	Total absence rate	% Non Covid-19 absence	% Covid-19 absence
St. John of God, Drumcar	3.85%	0.27%	4.12%	0.61%	4.74%	87.06%	12.94%
Medical & Dental	0.00%	0.00%	0.00%	0.00%	0.00%		
Nursing & Midwifery	4.38%	0.32%	4.70%	0.40%	5.10%	92.12%	7.88%
Health & Social Care Professionals	4.79%	0.11%	4.90%	0.00%	4.90%	100.00%	0.00%
Management & Administrative	1.58%	0.22%	1.79%	0.00%	1.79%	100.00%	0.00%
General Support	9.57%	0.37%	9.94%	1.20%	11.13%	89.24%	10.76%
Patient & Client Care	3.29%	0.28%	3.57%	0.87%	4.44%	80.48%	19.52%

Health Service Absence Rate - by Staff Category: Sep 2024	Certified absence	Self-certified absence	Non Covid-19 absence	Covid-19 Absence	Total absence rate	% Non Covid-19 absence	% Covid-19 absence
St John of God HQ	0.00%	0.12%	0.12%	0.00%	0.12%	100.00%	0.00%
Medical & Dental							
Nursing & Midwifery	0.00%	0.00%	0.00%	0.00%	0.00%		
Health & Social Care Professionals	0.00%	0.00%	0.00%	0.00%	0.00%		
Management & Administrative	0.00%	0.13%	0.13%	0.00%	0.13%	100.00%	0.00%
General Support	0.00%	0.00%	0.00%	0.00%	0.00%		
Patient & Client Care							

Health Service Absence Rate - by Staff Category: Sep 2024	Certified absence	Self-certified absence	Non Covid-19 absence	Covid-19 Absence	Total absence rate	% Non Covid-19 absence	% Covid-19 absence
St. John of God (IDS)	2.19%	0.33%	2.53%	0.35%	2.88%	87.87%	12.13%
Medical & Dental	0.00%	0.00%	0.00%	0.00%	0.00%		
Nursing & Midwifery	0.61%	0.14%	0.74%	0.17%	0.91%	81.40%	18.60%
Health & Social Care Professionals	4.21%	0.47%	4.69%	0.17%	4.85%	96.56%	3.44%
Management & Administrative	0.16%	0.37%	0.53%	0.00%	0.53%	100.00%	0.00%
General Support	0.00%	0.00%	0.00%	0.00%	0.00%		
Patient & Client Care	1.13%	0.29%	1.42%	0.70%	2.12%	67.05%	32.95%

Health Service Absence Rate - by Staff Category: Sep 2024	Certified absence	Self-certified absence	Non Covid-19 absence	Covid-19 Absence	Total absence rate	% Non Covid-19 absence	% Covid-19 absence
St. John of God, Kerry	4.96%	0.71%	5.66%	0.39%	6.05%	93.60%	6.40%
Medical & Dental							
Nursing & Midwifery	8.18%	0.60%	8.78%	1.02%	9.80%	89.57%	10.43%
Health & Social Care Professionals	5.55%	1.20%	6.76%	0.00%	6.76%	100.00%	0.00%
Management & Administrative	1.27%	1.19%	2.46%	2.75%	5.21%	47.25%	52.75%
General Support	4.90%	0.77%	5.67%	0.23%	5.90%	96.07%	3.93%
Patient & Client Care	4.16%	0.50%	4.65%	0.05%	4.70%	98.98%	1.02%

Health Service Absence Rate - by Staff Category: Sep 2024	Certified absence	Self-certified absence	Non Covid-19 absence	Covid-19 Absence	Total absence rate	% Non Covid-19 absence	% Covid-19 absence
St. John of God Liffey Services	4.50%	0.46%	4.96%	0.20%	5.16%	96.18%	3.82%
Medical & Dental	0.00%	0.00%	0.00%	0.00%	0.00%		
Nursing & Midwifery	5.68%	0.82%	6.50%	0.22%	6.72%	96.76%	3.24%
Health & Social Care Professionals	2.75%	0.33%	3.08%	0.19%	3.27%	94.18%	5.82%
Management & Administrative	5.27%	0.00%	5.27%	0.00%	5.27%	100.00%	0.00%
General Support	7.39%	0.16%	7.55%	0.00%	7.55%	100.00%	0.00%
Patient & Client Care	5.35%	0.55%	5.90%	0.25%	6.15%	95.94%	4.06%

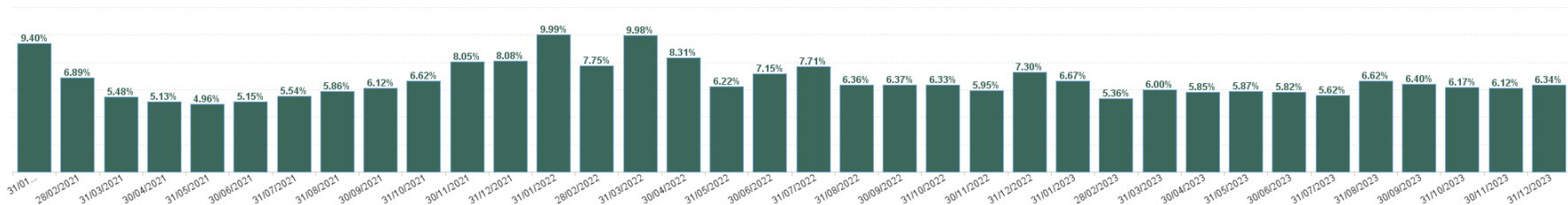
Health Service Absence Rate - by Staff Category: Sep 2024	Certified absence	Self-certified absence	Non Covid-19 absence	Covid-19 Absence	Total absence rate	% Non Covid-19 absence	% Covid-19 absence
St. Michael's House, Dublin	5.05%	0.27%	5.32%	0.37%	5.69%	93.54%	6.46%
Medical & Dental	0.77%	0.00%	0.77%	0.00%	0.77%	100.00%	0.00%
Nursing & Midwifery	4.10%	0.25%	4.35%	0.43%	4.78%	91.02%	8.98%
Health & Social Care Professionals	4.01%	0.24%	4.26%	0.35%	4.61%	92.34%	7.66%
Management & Administrative	4.62%	0.18%	4.80%	0.24%	5.04%	95.18%	4.82%
General Support	11.87%	0.26%	12.13%	0.00%	12.13%	100.00%	0.00%
Patient & Client Care	7.09%	0.39%	7.48%	0.47%	7.95%	94.06%	5.94%

Health Service Absence Rate - by Staff Category: Sep 2024	Certified absence	Self- certified absence	Non Covid-19 absence	Covid-19 Absence	Total absence rate	% Non Covid-19 absence	% Covid-19 absence
Sunbeam House Services	3.74%	0.66%	4.40%	0.22%	4.62%	95.19%	4.81%
Medical & Dental							
Nursing & Midwifery	4.28%	0.80%	5.08%	0.45%	5.53%	91.92%	8.08%
Health & Social Care Professionals	3.51%	0.76%	4.27%	0.14%	4.42%	96.76%	3.24%
Management & Administrative	2.61%	0.20%	2.81%	0.29%	3.10%	90.69%	9.31%
General Support	0.00%	0.28%	0.28%	0.00%	0.28%	100.00%	0.00%
Patient & Client Care	4.41%	0.66%	5.07%	0.27%	5.34%	95.01%	4.99%

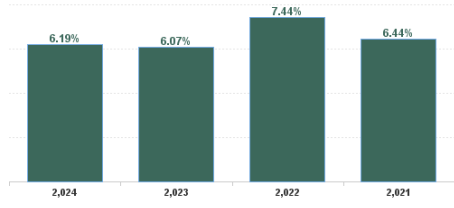
Year / Month	Certified absence	Self-certified absence	Non Covid-19 absence	Covid-19 Absence	Total absence rate	Medical & Dental	Nursing & Midwifery	Health & Social Care Professionals	Management & Administrative	General Support	Patient & Client Care
Sep 2024	4.99%	0.52%	5.51%	0.44%	5.95%	2.61%	6.92%	4.97%	4.59%	5.97%	6.28%
Aug 2024	5.02%	0.52%	5.54%	0.62%	6.16%	3.49%	6.63%	5.11%	5.01%	6.43%	6.68%
Jul 2024	5.33%	0.58%	5.91%	0.97%	6.88%	4.03%	7.04%	5.94%	5.38%	6.51%	7.56%
Jun 2024	5.20%	0.56%	5.75%	0.62%	6.37%	3.63%	6.69%	5.23%	4.72%	6.45%	7.04%
May 2024	5.19%	0.57%	5.76%	0.21%	5.97%	3.19%	6.49%	4.80%	4.15%	6.31%	6.60%
Apr 2024	5.12%	0.54%	5.66%	0.18%	5.85%	4.70%	6.14%	5.16%	3.76%	6.37%	6.37%
Mar 2024	5.11%	0.55%	5.66%	0.19%	5.84%	1.04%	6.10%	4.80%	4.11%	5.88%	6.54%
Feb 2024	5.11%	0.61%	5.72%	0.34%	6.06%	3.49%	6.27%	5.11%	3.92%	6.69%	6.74%
Jan 2024	5.30%	0.70%	5.99%	0.64%	6.63%	2.95%	7.04%	5.64%	3.86%	7.12%	7.40%
2024	5.15%	0.57%	5.72%	0.47%	6.19%	3.24%	6.59%	5.20%	4.38%	6.41%	6.80%
Dec 2023	5.04%	0.70%	5.74%	0.60%	6.34%	3.87%	6.71%	5.58%	4.39%	7.36%	6.79%
Nov 2023	5.07%	0.65%	5.72%	0.40%	6.12%	0.52%	6.83%	5.17%	4.19%	6.37%	6.65%
Oct 2023	5.00%	0.61%	5.60%	0.57%	6.17%	1.25%	6.78%	5.15%	4.32%	7.05%	6.69%
Sep 2023	5.02%	0.57%	5.59%	0.81%	6.40%	0.66%	6.85%	5.44%	3.92%	6.27%	7.13%
Aug 2023	5.27%	0.58%	5.84%	0.78%	6.62%	1.95%	7.10%	5.38%	4.50%	7.29%	7.35%
Jul 2023	4.69%	0.55%	5.24%	0.38%	5.62%	0.59%	6.09%	4.49%	3.59%	7.20%	6.20%
Jun 2023	4.96%	0.56%	5.52%	0.30%	5.82%	2.28%	6.50%	4.87%	4.21%	5.97%	6.25%
May 2023	4.97%	0.51%	5.48%	0.39%	5.87%	1.41%	5.99%	5.15%	4.00%	6.85%	6.41%
Apr 2023	4.86%	0.54%	5.40%	0.45%	5.85%	1.00%	6.08%	5.15%	3.78%	6.88%	6.35%
Mar 2023	4.87%	0.58%	5.45%	0.55%	6.00%	0.83%	5.85%	5.57%	4.28%	7.22%	6.47%
Feb 2023	4.39%	0.53%	4.91%	0.45%	5.36%	3.87%	5.61%	4.43%	4.03%	6.53%	5.88%
Jan 2023	5.10%	0.66%	5.77%	0.90%	6.67%	3.33%	7.07%	5.68%	3.94%	7.18%	7.38%
2023	4.94%	0.59%	5.52%	0.55%	6.07%	1.75%	6.45%	5.17%	4.10%	6.84%	6.63%
Dec 2022	5.37%	0.74%	6.11%	1.19%	7.30%	0.90%	7.26%	6.63%	4.38%	7.01%	8.13%
Nov 2022	4.66%	0.56%	5.22%	0.73%	5.95%	1.46%	6.47%	4.83%	3.64%	6.19%	6.73%
Oct 2022	4.92%	0.61%	5.52%	0.80%	6.33%	1.83%	6.25%	5.27%	3.70%	6.77%	7.31%
Sep 2022	5.06%	0.60%	5.66%	0.71%	6.37%	1.58%	6.74%	4.97%	4.16%	6.40%	7.26%
Aug 2022	4.98%	0.47%	5.45%	0.91%	6.36%	3.43%	6.35%	5.40%	3.75%	6.27%	7.38%
Jul 2022	5.21%	0.47%	5.69%	2.02%	7.71%	3.32%	7.88%	6.30%	4.70%	7.61%	8.79%
Jun 2022	4.73%	0.65%	5.38%	1.77%	7.15%	3.41%	7.17%	6.27%	4.93%	6.55%	7.97%
May 2022	4.56%	0.61%	5.17%	1.05%	6.22%	3.56%	6.74%	4.19%	4.51%	6.56%	7.44%
Apr 2022	4.79%	0.67%	5.46%	2.85%	8.31%	1.64%	9.11%	6.97%	5.10%	8.60%	9.11%
Mar 2022	4.83%	0.70%	5.53%	4.45%	9.98%	3.16%	11.46%	8.09%	7.17%	9.99%	10.72%
Feb 2022	4.18%	0.64%	4.83%	2.92%	7.75%	1.40%	8.51%	6.74%	5.06%	6.78%	8.46%
Jan 2022	4.26%	0.64%	4.90%	5.09%	9.99%	1.46%	10.96%	8.37%	6.01%	8.31%	11.16%
2022	4.79%	0.61%	5.41%	2.04%	7.44%	2.49%	7.93%	6.12%	4.74%	7.19%	8.38%
Dec 2021	4.64%	0.67%	5.30%	2.77%	8.08%	3.03%	8.69%	6.92%	4.87%	7.74%	8.89%
Nov 2021	4.87%	0.73%	5.61%	2.45%	8.05%	3.69%	9.12%	6.90%	5.86%	7.16%	8.63%
Oct 2021	4.78%	0.55%	5.33%	1.29%	6.62%	2.97%	7.65%	5.70%	4.64%	6.63%	6.97%
Sep 2021	4.62%	0.51%	5.14%	0.98%	6.12%	7.70%	6.87%	5.19%	4.18%	5.48%	6.59%
Aug 2021	4.60%	0.38%	4.98%	0.88%	5.86%	10.75%	6.05%	4.80%	3.98%	4.96%	6.62%
Jul 2021	4.53%	0.42%	4.94%	0.59%	5.54%	5.18%	5.84%	4.71%	3.46%	6.24%	6.04%
Jun 2021	4.10%	0.51%	4.61%	0.54%	5.15%	3.20%	5.39%	4.28%	3.04%	5.23%	5.79%
May 2021	3.87%	0.41%	4.28%	0.67%	4.96%	2.52%	5.19%	4.20%	2.32%	4.47%	5.67%
Apr 2021	3.90%	0.38%	4.29%	0.84%	5.13%	2.01%	5.81%	4.54%	2.66%	5.36%	5.49%
Mar 2021	3.96%	0.49%	4.46%	1.02%	5.48%	2.20%	5.72%	4.88%	3.13%	5.29%	6.06%
Feb 2021	4.35%	0.55%	4.90%	1.99%	6.89%	1.33%	7.54%	6.11%	2.94%	6.11%	7.70%
Jan 2021	4.57%	0.35%	4.92%	4.48%	9.40%	0.92%	10.46%	8.06%	3.52%	9.46%	10.50%
2021	4.40%	0.50%	4.90%	1.55%	6.44%	3.86%	7.02%	5.53%	3.72%	6.16%	7.09%

Year / Month	Certified absence	Self-certified absence	Non Covid-19 absence	Covid-19 Absence	Total absence rate	CHO 1	CHO 2	CHO 3	CHO 4	CHO 5	CHO 6	CHO 7	CHO 8	CHO 9	Other Comm	Social Care
Sep 2024	4.99%	0.52%	5.51%	0.44%	5.95%	9.11%	5.56%	5.54%	5.86%	8.12%	4.26%	5.27%	5.55%	5.47%	0.00%	5.95%
Aug 2024	5.02%	0.52%	5.54%	0.62%	6.16%	9.36%	6.31%	5.59%	6.19%	7.70%	5.26%	5.85%	5.22%	5.42%	0.00%	6.16%
Jul 2024	5.33%	0.58%	5.91%	0.97%	6.88%	10.91%	6.51%	6.62%	7.42%	7.76%	6.12%	6.24%	6.68%	5.56%	0.00%	6.88%
Jun 2024	5.20%	0.56%	5.75%	0.62%	6.37%	10.37%	6.39%	5.96%	6.41%	7.54%	5.37%	5.61%	6.19%	5.35%	0.00%	6.37%
May 2024	5.19%	0.57%	5.76%	0.21%	5.97%	9.79%	5.59%	5.97%	5.44%	7.06%	5.62%	5.70%	5.74%	4.76%	0.00%	5.97%
Apr 2024	5.12%	0.54%	5.66%	0.18%	5.85%	9.11%	6.37%	5.90%	5.91%	6.70%	4.53%	5.10%	5.27%	5.12%	0.00%	5.85%
Mar 2024	5.11%	0.55%	5.66%	0.19%	5.84%	9.90%	6.16%	5.25%	5.88%	7.26%	4.84%	5.13%	5.58%	4.78%	0.00%	5.84%
Feb 2024	5.11%	0.61%	5.72%	0.34%	6.06%	9.69%	5.77%	5.38%	6.09%	6.47%	5.88%	5.40%	6.37%	5.15%	0.00%	6.06%
Jan 2024	5.30%	0.70%	5.99%	0.64%	6.63%	10.84%	7.26%	6.01%	6.72%	7.24%	5.91%	5.80%	6.64%	5.34%	0.00%	6.63%
2024	5.15%	0.57%	5.72%	0.47%	6.19%	9.91%	6.18%	5.80%	6.19%	7.31%	5.31%	5.55%	5.94%	5.21%	0.00%	6.19%
Dec 2023	5.04%	0.70%	5.74%	0.60%	6.34%	9.89%	6.75%	5.25%	6.45%	7.10%	6.32%	5.20%	6.03%	6.02%	3.53%	6.34%
Nov 2023	5.07%	0.65%	5.72%	0.40%	6.12%	9.25%	6.15%	5.44%	6.18%	6.52%	5.86%	5.48%	6.21%	5.44%	0.00%	6.12%
Oct 2023	5.00%	0.61%	5.60%	0.57%	6.17%	9.05%	5.76%	5.88%	6.42%	6.79%	5.30%	5.68%	5.96%	5.69%	0.00%	6.17%
Sep 2023	5.02%	0.57%	5.59%	0.81%	6.40%	8.71%	5.81%	6.18%	6.84%	7.88%	5.00%	6.00%	6.20%	5.68%	0.00%	6.40%
Aug 2023	5.27%	0.58%	5.84%	0.78%	6.62%	9.37%	6.75%	6.04%	6.92%	8.43%	5.68%	6.03%	7.04%	5.29%	0.00%	6.62%
Jul 2023	4.69%	0.55%	5.24%	0.38%	5.62%	7.82%	5.25%	5.58%	5.52%	6.89%	5.27%	4.99%	5.55%	5.13%	2.98%	5.62%
Jun 2023	4.96%	0.56%	5.52%	0.30%	5.82%	7.72%	5.88%	5.29%	5.61%	7.71%	5.28%	5.06%	6.01%	5.27%	3.16%	5.82%
May 2023	4.97%	0.51%	5.48%	0.39%	5.87%	7.97%	5.64%	5.57%	5.71%	7.23%	5.18%	5.64%	5.86%	5.15%	0.00%	5.87%
Apr 2023	4.86%	0.54%	5.40%	0.45%	5.85%	7.82%	5.97%	5.50%	6.15%	7.22%	5.23%	5.43%	5.70%	5.01%	0.00%	5.85%
Mar 2023	4.87%	0.58%	5.45%	0.55%	6.00%	8.55%	5.23%	4.92%	5.62%	7.65%	6.11%	6.13%	5.80%	5.28%	0.00%	6.00%
Feb 2023	4.39%	0.53%	4.91%	0.45%	5.36%	8.14%	5.11%	5.01%	5.42%	7.48%	4.65%	4.87%	5.01%	4.50%	11.15%	5.36%
Jan 2023	5.10%	0.66%	5.77%	0.90%	6.67%	9.92%	6.34%	6.15%	6.60%	8.30%	5.63%	6.20%	7.51%	5.10%	11.94%	6.67%
2023	4.94%	0.59%	5.52%	0.55%	6.07%	8.69%	5.87%	5.57%	6.12%	7.43%	5.45%	5.56%	6.06%	5.29%	2.46%	6.07%
Dec 2022	5.37%	0.74%	6.11%	1.19%	7.30%	11.01%	6.50%	6.74%	7.15%	9.88%	6.82%	6.74%	7.09%	6.03%	0.00%	7.30%
Nov 2022	4.66%	0.56%	5.22%	0.73%	5.95%	8.32%	5.64%	5.36%	6.53%	7.89%	4.77%	5.65%	6.96%	4.37%	0.00%	5.95%
Oct 2022	4.92%	0.61%	5.52%	0.80%	6.33%	9.67%	5.90%	5.51%	7.08%	8.35%	5.84%	5.53%	6.90%	4.77%	0.00%	6.33%
Sep 2022	5.06%	0.60%	5.66%	0.71%	6.37%	9.19%	6.01%	4.95%	6.29%	8.29%	5.16%	6.33%	7.01%	5.18%	0.00%	6.37%
Aug 2022	4.98%	0.47%	5.45%	0.91%	6.36%	10.34%	6.20%	4.65%	6.50%	8.67%	4.40%	5.93%	7.24%	4.93%	2.21%	6.36%
Jul 2022	5.21%	0.47%	5.69%	2.02%	7.71%	10.59%	7.00%	7.06%	7.69%	9.80%	6.03%	7.30%	8.97%	6.11%	0.00%	7.71%
Jun 2022	4.73%	0.65%	5.38%	1.77%	7.15%	8.56%	7.86%	5.63%	7.66%	8.62%	7.26%	7.17%	7.74%	5.48%	0.73%	7.15%
May 2022	4.56%	0.61%	5.17%	1.05%	6.22%	8.06%	5.97%	5.37%	6.20%	7.88%	5.05%	6.27%	6.99%	5.14%	0.00%	6.22%
Apr 2022	4.79%	0.67%	5.46%	2.85%	8.31%	9.72%	7.79%	8.35%	10.71%	9.49%	6.61%	7.97%	8.71%	6.21%	0.00%	8.31%
Mar 2022	4.83%	0.70%	5.53%	4.45%	9.98%	13.34%	8.93%	8.45%	11.19%	11.57%	9.34%	9.99%	10.96%	7.75%	0.00%	9.98%
Feb 2022	4.18%	0.64%	4.83%	2.92%	7.75%	10.20%	7.00%	7.75%	8.41%	9.02%	7.99%	7.34%	8.07%	6.09%	0.00%	7.75%
Jan 2022	4.26%	0.64%	4.90%	5.09%	9.99%	11.55%	10.36%	9.58%	12.16%	12.28%	8.23%	8.44%	11.04%	7.99%	1.50%	9.99%
2022	4.79%	0.61%	5.41%	2.04%	7.44%	10.04%	7.04%	6.62%	8.13%	9.32%	6.45%	7.05%	8.16%	5.81%	0.37%	7.44%
Dec 2021	4.64%	0.67%	5.30%	2.77%	8.08%	10.17%	7.70%	7.69%	10.20%	9.23%	6.27%	8.38%	7.05%	6.53%	0.68%	8.08%
Nov 2021	4.87%	0.73%	5.61%	2.45%	8.05%	9.83%	6.71%	7.63%	10.32%	8.22%	6.75%	7.91%	7.98%	7.06%	0.00%	8.05%
Oct 2021	4.78%	0.55%	5.33%	1.29%	6.62%	8.71%	5.36%	6.37%	8.10%	6.66%	5.24%	6.58%	6.88%	5.90%	0.00%	6.62%
Sep 2021	4.62%	0.51%	5.14%	0.98%	6.12%	8.30%	4.60%	5.35%	6.89%	5.96%	6.28%	6.34%	6.85%	5.02%	1.91%	6.12%
Aug 2021	4.60%	0.38%	4.98%	0.88%	5.86%	8.92%	4.60%	4.80%	6.04%	6.41%	5.69%	6.18%	6.12%	4.88%	0.00%	5.86%
Jul 2021	4.53%	0.42%	4.94%	0.59%	5.54%	8.25%	4.40%	4.06%	5.35%	5.80%	6.10%	5.78%	6.33%	4.88%	0.00%	5.54%
Jun 2021	4.10%	0.51%	4.61%	0.54%	5.15%	7.13%	4.79%	4.47%	5.65%	5.26%	4.98%	5.06%	5.33%	4.49%	0.00%	5.15%
May 2021	3.87%	0.41%	4.28%	0.67%	4.96%	6.58%	4.71%	4.59%	5.48%	4.84%	4.34%	5.09%	5.04%	4.33%	0.00%	4.96%
Apr 2021	3.90%	0.38%	4.29%	0.84%	5.13%	6.16%	4.55%	3.91%	5.14%	5.29%	4.97%	5.85%	5.61%	4.63%	0.00%	5.13%
Mar 2021	3.96%	0.49%	4.46%	1.02%	5.48%	7.09%	6.17%	4.47%	5.44%	6.38%	4.50%	5.53%	5.93%	4.72%	0.00%	5.48%
Feb 2021	4.35%	0.55%	4.90%	1.99%	6.89%	8.50%	7.63%	5.86%	6.73%	8.99%	6.21%	6.62%	7.66%	5.56%	0.00%	6.89%
Jan 2021	4.57%	0.35%	4.92%	4.48%	9.40%	12.27%	9.04%	8.79%	10.05%	11.27%	8.93%	9.56%	8.72%	7.84%	0.00%	9.40%
2021	4.40%	0.50%	4.90%	1.55%	6.44%	8.49%	5.81%	5.69%	7.14%	7.01%	5.83%	6.58%	6.65%	5.48%	0.23%	6.44%

Total Absence Rate



Total Absence Rate



% of Absence Non Covid-19 / Covid-19

