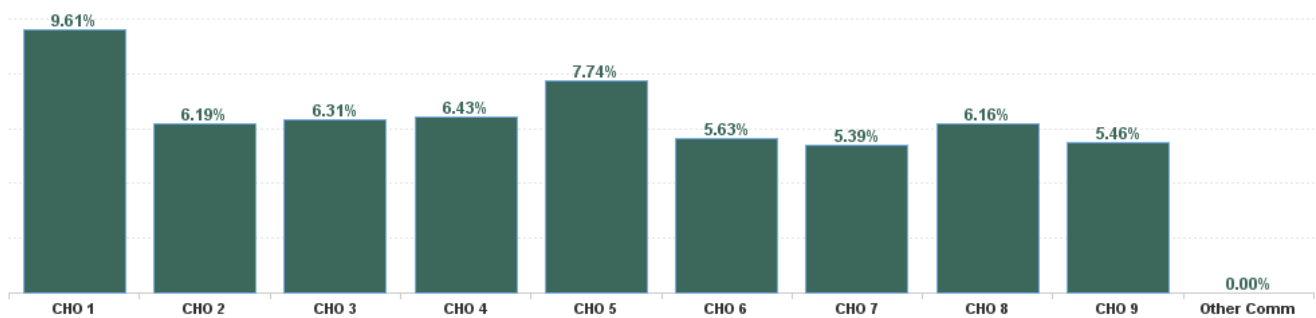


October 2024

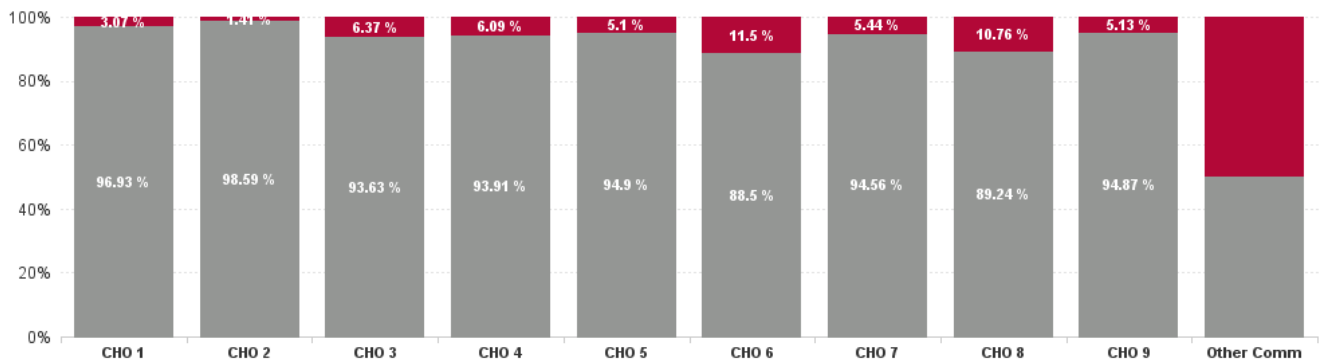
Health Service Absence Rate - by Staff Category: Oct 2024	Certified absence	Self-certified absence	Non Covid-19 absence	Covid-19 Absence	Total absence rate	% Non Covid-19 absence	% Covid-19 absence
Disabilities	5.38%	0.60%	5.98%	0.36%	6.34%	94.31%	5.69%
Medical & Dental	0.45%	1.94%	2.38%	0.00%	2.38%	100.00%	0.00%
Nursing & Midwifery	5.88%	0.69%	6.57%	0.36%	6.93%	94.79%	5.21%
Health & Social Care Professionals	4.26%	0.47%	4.73%	0.37%	5.10%	92.80%	7.20%
Management & Administrative	4.88%	0.40%	5.28%	0.23%	5.51%	95.74%	4.26%
General Support	5.75%	0.43%	6.18%	0.24%	6.42%	96.25%	3.75%
Patient & Client Care	5.81%	0.66%	6.47%	0.39%	6.86%	94.33%	5.67%

Health Service Absence Rate - by Hospital Group: Oct 2024	Certified absence	Self-certified absence	Non Covid-19 absence	Covid-19 Absence	Total absence rate	% Non Covid-19 absence	% Covid-19 absence
Disabilities	5.38%	0.60%	5.98%	0.36%	6.34%	94.31%	5.69%
CHO 1	8.68%	0.64%	9.32%	0.30%	9.61%	96.93%	3.07%
CHO 2	5.63%	0.47%	6.10%	0.09%	6.19%	98.59%	1.41%
CHO 3	5.41%	0.50%	5.91%	0.40%	6.31%	93.63%	6.37%
CHO 4	5.15%	0.89%	6.04%	0.39%	6.43%	93.91%	6.09%
CHO 5	6.63%	0.71%	7.35%	0.39%	7.74%	94.90%	5.10%
CHO 6	4.29%	0.70%	4.98%	0.65%	5.63%	88.50%	11.50%
CHO 7	4.43%	0.67%	5.09%	0.29%	5.39%	94.56%	5.44%
CHO 8	4.99%	0.50%	5.49%	0.66%	6.16%	89.24%	10.76%
CHO 9	4.75%	0.43%	5.18%	0.28%	5.46%	94.87%	5.13%
Other Community Services	0.00%	0.00%	0.00%	0.00%	0.00%	#DIV/0	#DIV/0

Total Absence Rate

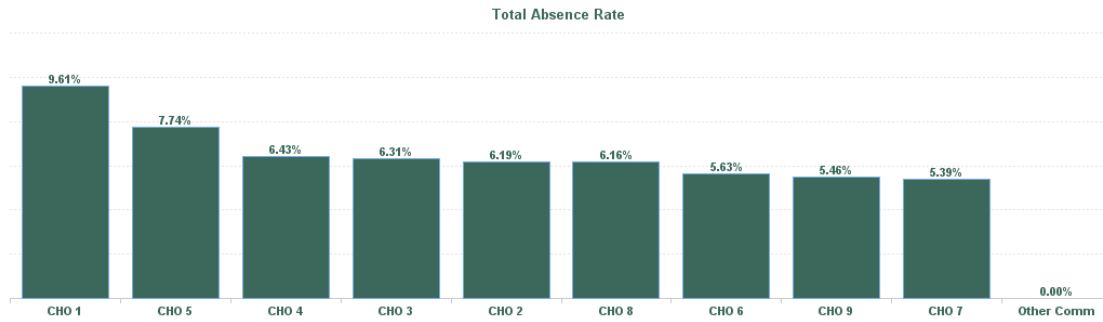


% of Absence Non Covid-19 / Covid-19



October 2024

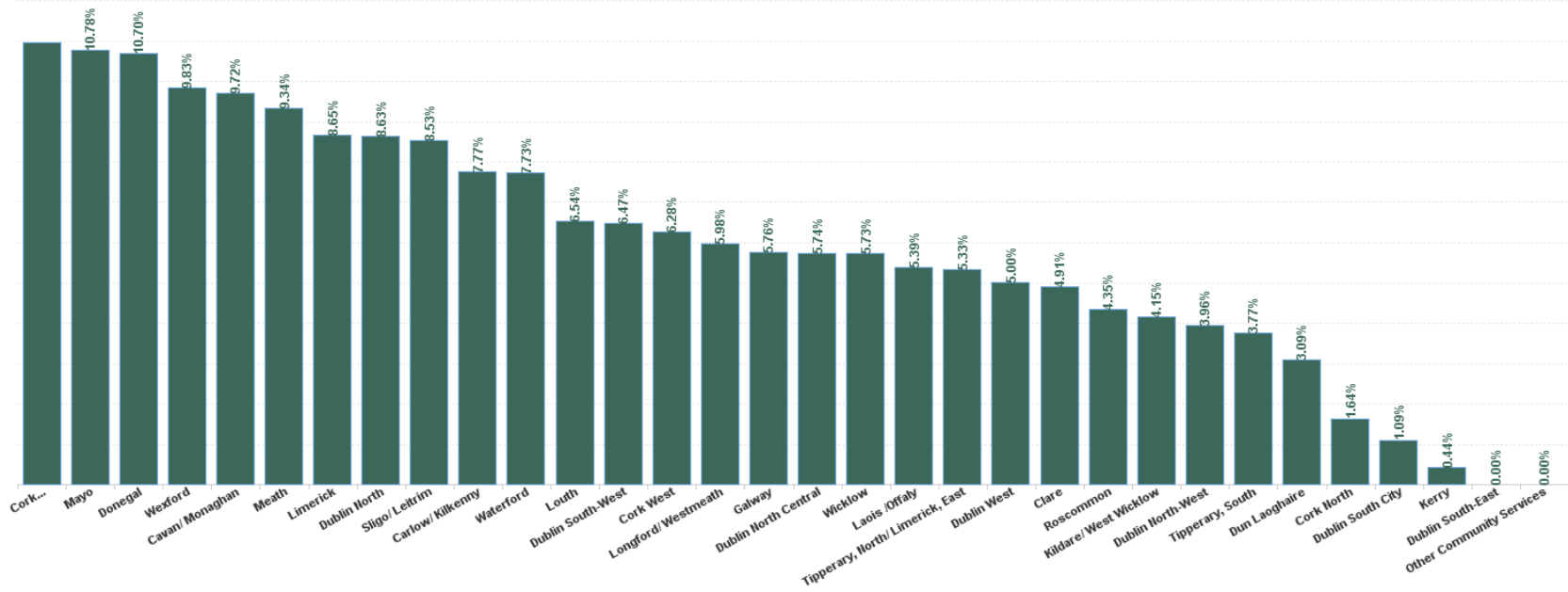
Health Service Absence Rate - by HG, CHO/Care Group & Staff Category : Oct 2024	Certified absence	Self-certified absence	Non Covid-19 absence	Covid-19 Absence	Total absence rate	Medical & Dental	Nursing & Midwifery	Health & Social Care Professionals	Management & Administrative	General Support	Patient & Client Care
Disabilities	5.38%	0.60%	5.98%	0.36%	6.34%	2.38%	6.93%	5.10%	5.51%	6.42%	6.86%
CHO 1	8.68%	0.64%	9.32%	0.30%	9.61%	0.00%	11.50%	4.53%	7.72%	5.90%	9.77%
CHO 2	5.63%	0.47%	6.10%	0.09%	6.19%	0.00%	7.36%	4.73%	4.47%	9.26%	6.71%
CHO 3	5.41%	0.50%	5.91%	0.40%	6.31%		6.18%	4.68%	7.60%	2.94%	6.96%
CHO 4	5.15%	0.89%	6.04%	0.39%	6.43%	0.00%	7.87%	6.14%	5.06%	8.11%	6.23%
CHO 5	6.63%	0.71%	7.35%	0.39%	7.74%	0.00%	10.39%	8.52%	7.02%	5.77%	7.01%
CHO 6	4.29%	0.70%	4.98%	0.65%	5.63%	0.00%	4.54%	6.01%	4.23%	2.74%	6.35%
CHO 7	4.43%	0.67%	5.09%	0.29%	5.39%	2.26%	5.31%	4.70%	4.18%	5.93%	5.82%
CHO 8	4.99%	0.50%	5.49%	0.66%	6.16%	71.01%	6.39%	5.68%	4.38%	4.67%	6.50%
CHO 9	4.75%	0.43%	5.18%	0.28%	5.46%	0.00%	4.88%	4.02%	6.38%	7.41%	7.20%
Other Community Services	0.00%	0.00%	0.00%	0.00%	0.00%				0.00%		



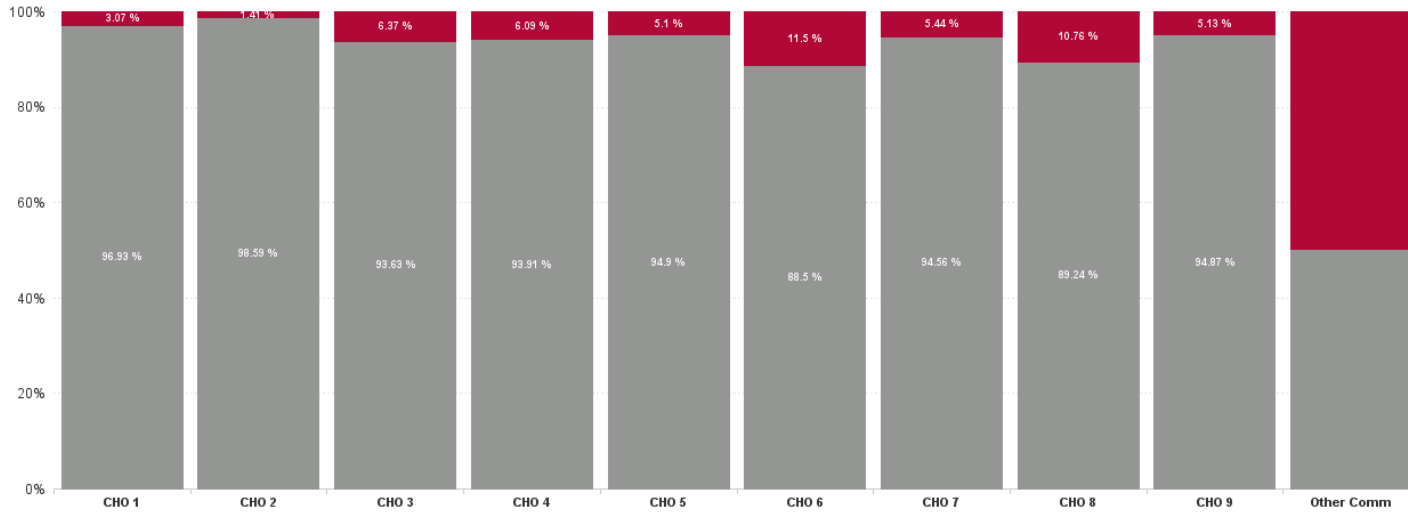
October 2024

Health Service Absence Rate - by HG, CHO/Care Group & Staff Category: Oct 2024	Certified absence	Self-certified absence	Non Covid-19 absence	Covid-19 Absence	Total absence rate	Medical & Dental	Nursing & Midwifery	Health & Social Care Professionals	Management & Administrative	General Support	Patient & Client Care
Total	5.38%	0.60%	5.98%	0.36%	6.34%	2.38%	6.93%	5.10%	5.51%	6.42%	6.86%
Cavan/ Monaghan	8.69%	0.85%	9.55%	0.17%	9.72%	0.00%	10.68%	11.27%	5.78%		9.53%
Donegal	9.57%	0.60%	10.16%	0.54%	10.70%	0.00%	16.27%	3.60%	9.26%	4.90%	9.71%
Sligo/ Leitrim	7.82%	0.60%	8.42%	0.11%	8.53%	0.00%	7.47%	1.47%	6.44%	6.39%	9.92%
CHO 1	8.68%	0.64%	9.32%	0.30%	9.61%	0.00%	11.50%	4.53%	7.72%	5.90%	9.77%
Galway	5.24%	0.45%	5.70%	0.07%	5.76%	0.00%	5.73%	4.42%	3.73%	10.00%	6.43%
Mayo	9.79%	0.67%	10.47%	0.32%	10.78%	0.00%	17.00%	7.16%	13.06%	0.00%	10.86%
Roscommon	4.35%	0.00%	4.35%	0.00%	4.35%		0.00%	7.25%	0.00%		0.00%
CHO 2	5.63%	0.47%	6.10%	0.09%	6.19%	0.00%	7.36%	4.73%	4.47%	9.26%	6.71%
Clare	4.24%	0.42%	4.66%	0.25%	4.91%		0.00%	3.47%	1.24%		5.66%
Limerick	7.59%	0.75%	8.34%	0.31%	8.65%		10.61%	5.23%	10.82%	2.07%	9.33%
Tipperary, North/ Limerick, East	4.44%	0.35%	4.79%	0.54%	5.33%		4.11%	5.04%	7.40%	3.25%	6.13%
CHO 3	5.41%	0.50%	5.91%	0.40%	6.31%		6.18%	4.68%	7.60%	2.94%	6.96%
Cork North	0.29%	1.35%	1.64%	0.00%	1.64%			0.00%	4.93%		0.00%
Cork South Lee	9.33%	1.03%	10.36%	0.59%	10.95%		17.36%	25.98%	4.28%		6.94%
Cork West	5.01%	0.89%	5.89%	0.39%	6.28%	0.00%	7.53%	5.46%	5.40%	8.11%	6.20%
Kerry	0.44%	0.00%	0.44%	0.00%	0.44%				0.44%		
CHO 4	5.15%	0.89%	6.04%	0.39%	6.43%	0.00%	7.87%	6.14%	5.06%	8.11%	6.23%
Carlow/ Kilkenny	7.05%	0.59%	7.64%	0.13%	7.77%		10.19%	5.91%	7.91%	0.00%	8.45%
Tipperary, South	3.10%	0.67%	3.77%	0.00%	3.77%		6.48%	5.50%	0.73%		1.05%
Waterford	6.44%	0.77%	7.21%	0.52%	7.73%	0.00%	10.33%	11.49%	7.03%	8.52%	6.66%
Wexford	8.52%	0.70%	9.22%	0.62%	9.83%	0.00%	12.69%	0.00%	4.67%		8.49%
CHO 5	6.63%	0.71%	7.35%	0.39%	7.74%	0.00%	10.39%	8.52%	7.02%	5.77%	7.01%
Dublin South-East	0.00%	0.00%	0.00%	0.00%	0.00%			0.00%			
Dun Laoghaire	2.54%	0.55%	3.09%	0.00%	3.09%		3.24%	0.00%	0.00%	0.00%	4.96%
Wicklow	4.35%	0.70%	5.06%	0.67%	5.73%	0.00%	4.73%	6.02%	4.43%	3.01%	6.39%
CHO 6	4.29%	0.70%	4.98%	0.65%	5.63%	0.00%	4.54%	6.01%	4.23%	2.74%	6.35%
Dublin South City	0.55%	0.55%	1.09%	0.00%	1.09%			1.14%			0.00%
Dublin South-West	5.42%	0.79%	6.21%	0.26%	6.47%	24.13%	8.09%	3.88%	3.85%	10.95%	7.28%
Dublin West	4.08%	0.64%	4.73%	0.28%	5.00%	0.40%	2.99%	7.17%	4.66%	2.98%	5.41%
Kildare/ West Wicklow	3.27%	0.45%	3.72%	0.43%	4.15%		1.68%	3.86%	3.63%	12.70%	4.70%
CHO 7	4.43%	0.67%	5.09%	0.29%	5.39%	2.26%	5.31%	4.70%	4.18%	5.93%	5.82%
Laois /Offaly	4.16%	0.52%	4.68%	0.71%	5.39%		6.00%	5.42%	4.44%	6.86%	5.32%
Longford/ Westmeath	4.98%	0.41%	5.39%	0.59%	5.98%	0.00%	8.03%	4.54%	4.85%	0.00%	6.48%
Louth	5.23%	0.56%	5.80%	0.75%	6.54%	100.00%	5.72%	8.37%	5.71%	4.25%	6.47%
Meath	8.70%	0.42%	9.12%	0.22%	9.34%		8.18%	3.83%	1.72%		15.11%
CHO 8	4.99%	0.50%	5.49%	0.66%	6.16%	71.01%	6.39%	5.68%	4.38%	4.67%	6.50%
Dublin North	7.72%	0.65%	8.38%	0.26%	8.63%	0.00%	7.99%	1.62%	4.99%	19.19%	10.36%
Dublin North Central	5.25%	0.39%	5.64%	0.10%	5.74%	0.00%	4.71%	4.38%	7.65%	10.81%	7.91%
Dublin North-West	2.96%	0.42%	3.38%	0.58%	3.96%	0.00%	3.09%	3.03%	4.55%	2.96%	5.35%
CHO 9	4.75%	0.43%	5.18%	0.28%	5.46%	0.00%	4.88%	4.02%	6.38%	7.41%	7.20%
Other Community Services	0.00%	0.00%	0.00%	0.00%	0.00%				0.00%		
Other Community Services	0.00%	0.00%	0.00%	0.00%	0.00%				0.00%		
Community Services	5.38%	0.60%	5.98%	0.36%	6.34%	2.38%	6.93%	5.10%	5.51%	6.42%	6.86%

Total Absence Rate



% of Absence Non Covid-19 / Covid-19



October 2024

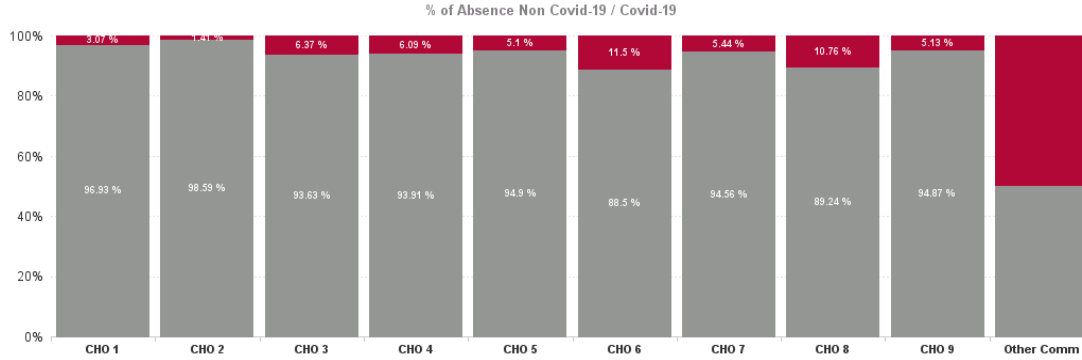
Health Service Covid 19 Absence Rate - by Hospital & Staff Category: Oct 2024	Non Covid-19 absence	Covid-19 absence	Total absence rate	Medical & Dental	Nursing & Midwifery	Health & Social Care Professionals	Management & Administrative	General Support	Patient & Client Care
Disabilities	5.98%	0.36%	6.34%	0.00%	0.36%	0.37%	0.23%	0.24%	0.39%
Cavan/ Monaghan	9.55%	0.17%	9.72%	0.00%	0.00%	0.00%	0.00%		0.29%
Donegal	10.16%	0.54%	10.70%	0.00%	0.10%	0.00%	1.72%	1.77%	0.61%
Sligo/ Leitrim	8.42%	0.11%	8.53%	0.00%	0.00%	0.00%	0.00%	0.00%	0.19%
CHO 1	9.32%	0.30%	9.61%	0.00%	0.04%	0.00%	0.84%	0.58%	0.37%
Galway	5.70%	0.07%	5.76%	0.00%	0.03%	0.07%	0.11%	0.00%	0.07%
Mayo	10.47%	0.32%	10.78%	0.00%	0.15%	0.00%	0.57%	0.00%	0.64%
Roscommon	4.35%	0.00%	4.35%		0.00%	0.00%	0.00%		0.00%
CHO 2	6.10%	0.09%	6.19%	0.00%	0.05%	0.06%	0.15%	0.00%	0.11%
Clare	4.66%	0.25%	4.91%		0.00%	0.00%	0.00%		0.35%
Limerick	8.34%	0.31%	8.65%		1.18%	0.00%	0.00%	0.00%	0.19%
Tipperary, North/ Limerick, East	4.79%	0.54%	5.33%		0.52%	0.42%	0.63%	0.00%	0.65%
CHO 3	5.91%	0.40%	6.31%		0.73%	0.16%	0.26%	0.00%	0.42%
Cork North	1.64%	0.00%	1.64%			0.00%	0.00%		0.00%
Cork South Lee	10.36%	0.59%	10.95%		1.42%	0.00%	3.21%		0.41%
Cork West	5.89%	0.39%	6.28%	0.00%	0.67%	0.02%	0.55%	0.30%	0.41%
Kerry	0.44%	0.00%	0.44%				0.00%		
CHO 4	6.04%	0.39%	6.43%	0.00%	0.69%	0.02%	0.57%	0.30%	0.41%
Carlow/ Kilkenny	7.64%	0.13%	7.77%		0.16%	0.23%	0.00%	0.00%	0.11%
Tipperary, South	3.77%	0.00%	3.77%		0.00%	0.00%	0.00%		0.00%
Waterford	7.21%	0.52%	7.73%	0.00%	0.95%	1.93%	0.00%	4.45%	0.17%
Wexford	9.22%	0.62%	9.83%	0.00%	0.91%	0.00%	0.00%		0.47%
CHO 5	7.35%	0.39%	7.74%	0.00%	0.67%	1.03%	0.00%	3.01%	0.17%
Dublin South-East	0.00%	0.00%	0.00%			0.00%			
Dun Laoghaire	3.09%	0.00%	3.09%		0.00%	0.00%	0.00%	0.00%	0.00%
Wicklow	5.06%	0.67%	5.73%	0.00%	0.11%	0.80%	0.09%	0.33%	0.94%
CHO 6	4.98%	0.65%	5.63%	0.00%	0.09%	0.80%	0.09%	0.30%	0.91%
Dublin South City	1.09%	0.00%	1.09%			0.00%			0.00%
Dublin South-West	6.21%	0.26%	6.47%	0.00%	0.26%	0.21%	0.13%	0.00%	0.36%
Dublin West	4.73%	0.28%	5.00%	0.00%	0.15%	0.28%	0.26%	0.00%	0.35%
Kildare/ West Wicklow	3.72%	0.43%	4.15%		0.73%	0.09%	0.00%	10.26%	0.65%
CHO 7	5.09%	0.29%	5.39%	0.00%	0.23%	0.20%	0.16%	0.07%	0.39%
Laois /Offaly	4.68%	0.71%	5.39%		0.63%	1.17%	0.00%	0.00%	0.58%
Longford/ Westmeath	5.39%	0.59%	5.98%	0.00%	1.07%	1.12%	0.00%	0.00%	0.29%
Louth	5.80%	0.75%	6.54%	0.00%	0.93%	0.77%	0.78%	0.00%	0.66%
Meath	9.12%	0.22%	9.34%		0.00%	0.00%	0.00%		0.54%
CHO 8	5.49%	0.66%	6.16%	0.00%	0.81%	1.03%	0.14%	0.00%	0.53%
Dublin North	8.38%	0.26%	8.63%	0.00%	0.15%	1.62%	0.53%	0.00%	0.24%
Dublin North Central	5.64%	0.10%	5.74%	0.00%	0.04%	0.12%	0.00%	0.44%	0.09%
Dublin North-West	3.38%	0.58%	3.96%	0.00%	0.19%	0.63%	0.23%	0.36%	0.93%
CHO 9	5.18%	0.28%	5.46%	0.00%	0.12%	0.26%	0.13%	0.37%	0.46%

Other Community Services	0.00%	0.00%	0.00%
Other Community Services	0.00%	0.00%	0.00%
Community Services	5.98%	0.36%	6.34%

			0.00%		
			0.00%		
0.00%	0.36%	0.37%	0.23%	0.24%	0.39%

October 2024

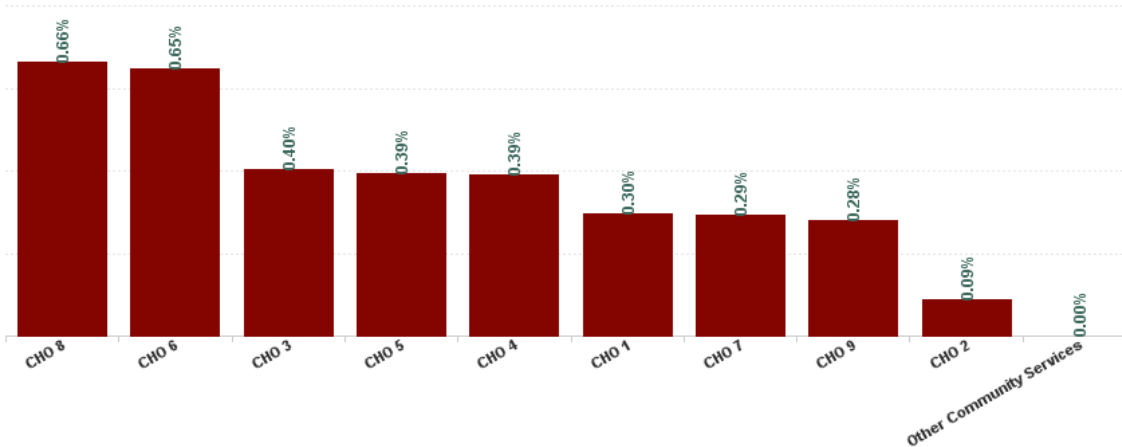
Health Service Absence Rate - by HG, CHO/Care Group & Staff Category: Oct 2024	Certified absence	Self-certified absence	Non Covid-19 absence	Covid-19 Absence	Total absence rate	Medical & Dental	Nursing & Midwifery	Health & Social Care Professionals	Management & Administrative	General Support	Patient & Client Care
Total	5.38%	0.60%	5.98%	0.36%	6.34%	2.38%	6.93%	5.10%	5.51%	6.42%	6.86%
Health Service Executive	8.68%	0.64%	9.32%	0.30%	9.61%	0.00%	11.50%	4.53%	7.72%	5.90%	9.77%
CHO 1	8.68%	0.64%	9.32%	0.30%	9.61%	0.00%	11.50%	4.53%	7.72%	5.90%	9.77%
Health Service Executive	8.44%	0.54%	8.98%	0.22%	9.20%	0.00%	16.75%	7.22%	7.87%	0.00%	9.55%
Section 38 Voluntary Agencies	5.23%	0.46%	5.69%	0.07%	5.76%	0.00%	5.73%	4.16%	3.37%	10.00%	6.49%
CHO 2	5.63%	0.47%	6.10%	0.09%	6.19%	0.00%	7.36%	4.73%	4.47%	9.26%	6.71%
Health Service Executive	9.21%	1.30%	10.51%	0.16%	10.67%		20.00%	6.54%	12.36%	1.02%	13.64%
Section 38 Voluntary Agencies	5.14%	0.44%	5.58%	0.42%	6.00%		6.15%	4.52%	4.77%	3.26%	6.68%
CHO 3	5.41%	0.50%	5.91%	0.40%	6.31%		6.18%	4.68%	7.60%	2.94%	6.96%
Health Service Executive	6.19%	0.89%	7.08%	0.25%	7.34%	0.00%	8.26%	14.81%	4.11%	5.01%	6.27%
Section 38 Voluntary Agencies	5.01%	0.89%	5.90%	0.41%	6.31%		7.81%	5.18%	5.47%	8.79%	6.23%
CHO 4	5.15%	0.89%	6.04%	0.39%	6.43%	0.00%	7.87%	6.14%	5.06%	8.11%	6.23%
Health Service Executive	6.45%	0.58%	7.03%	0.25%	7.28%	0.00%	11.35%	5.08%	5.55%		6.63%
Section 38 Voluntary Agencies	6.70%	0.75%	7.45%	0.44%	7.90%	0.00%	9.63%	10.93%	8.24%	5.77%	7.07%
CHO 5	6.63%	0.71%	7.35%	0.39%	7.74%	0.00%	10.39%	8.52%	7.02%	5.77%	7.01%
Health Service Executive	9.05%	0.64%	9.69%	1.29%	10.97%	0.00%	8.40%	10.66%	11.01%		13.18%
Section 38 Voluntary Agencies	3.38%	0.71%	4.09%	0.53%	4.62%	0.00%	2.53%	5.66%	2.72%	2.74%	4.90%
CHO 6	4.29%	0.70%	4.98%	0.65%	5.63%	0.00%	4.54%	6.01%	4.23%	2.74%	6.35%
Health Service Executive	2.79%	0.31%	3.10%	0.15%	3.24%		0.00%	2.33%	5.44%		0.00%
Section 38 Voluntary Agencies	4.47%	0.68%	5.15%	0.30%	5.45%	2.26%	5.34%	4.87%	3.99%	5.93%	5.85%
CHO 7	4.43%	0.67%	5.09%	0.29%	5.39%	2.26%	5.31%	4.70%	4.18%	5.93%	5.82%
Health Service Executive	7.43%	0.67%	8.10%	0.31%	8.41%	0.00%	9.09%	5.11%	4.76%	0.00%	11.33%
Section 38 Voluntary Agencies	4.25%	0.45%	4.71%	0.77%	5.48%	100.00%	5.13%	5.83%	3.98%	5.16%	5.46%
CHO 8	4.99%	0.50%	5.49%	0.66%	6.16%	71.01%	6.39%	5.68%	4.38%	4.67%	6.50%
Health Service Executive	7.09%	0.63%	7.71%	0.23%	7.94%	0.00%	7.94%	1.82%	4.53%	19.19%	10.15%
Section 38 Voluntary Agencies	4.41%	0.40%	4.81%	0.29%	5.10%	0.00%	3.91%	4.11%	6.68%	6.58%	6.67%
CHO 9	4.75%	0.43%	5.18%	0.28%	5.46%	0.00%	4.88%	4.02%	6.38%	7.41%	7.20%
Health Service Executive	0.00%	0.00%	0.00%	0.00%	0.00%				0.00%		
Other Community Services	0.00%	0.00%	0.00%	0.00%	0.00%				0.00%		
Community Services	5.38%	0.60%	5.98%	0.36%	6.34%	2.38%	6.93%	5.10%	5.51%	6.42%	6.86%



October 2024

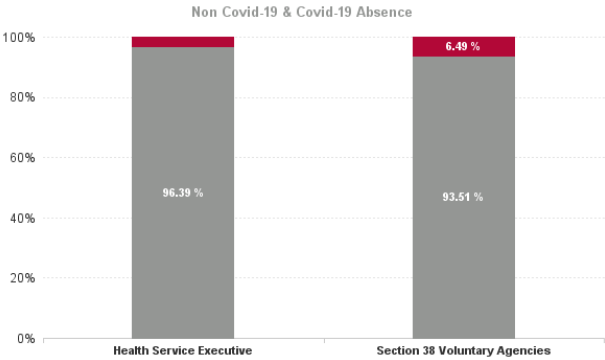
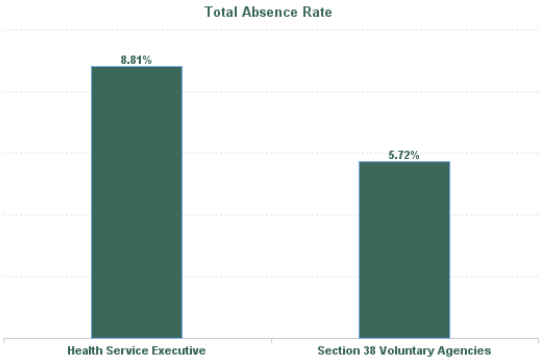
Health Service Covid 19 Absence Rate - by Hospital & Staff Category: Oct 2024	Non Covid-19 absence	Covid-19 Absence	Total absence rate	Professional Categories					
				Medical & Dental	Nursing & Midwifery	Health & Social Care Professionals	Management & Administrative	General Support	Patient & Client Care
Disabilities	5.98%	0.36%	6.34%	0.00%	0.36%	0.37%	0.23%	0.24%	0.39%
Health Service Executive	9.32%	0.30%	9.61%	0.00%	0.04%	0.00%	0.84%	0.58%	0.37%
CHO 1	9.32%	0.30%	9.61%	0.00%	0.04%	0.00%	0.84%	0.58%	0.37%
Health Service Executive	8.98%	0.22%	9.20%	0.00%	0.15%	0.00%	0.21%	0.00%	0.57%
Section 38 Voluntary Agencies	5.69%	0.07%	5.76%	0.00%	0.03%	0.07%	0.13%	0.00%	0.07%
CHO 2	6.10%	0.09%	6.19%	0.00%	0.05%	0.06%	0.15%	0.00%	0.11%
Health Service Executive	10.51%	0.16%	10.67%		0.00%	0.00%	0.45%	0.00%	0.00%
Section 38 Voluntary Agencies	5.58%	0.42%	6.00%		0.73%	0.17%	0.15%	0.00%	0.43%
CHO 3	5.91%	0.40%	6.31%		0.73%	0.16%	0.26%	0.00%	0.42%
Health Service Executive	7.08%	0.25%	7.34%	0.00%	0.37%	0.00%	0.41%	0.00%	0.26%
Section 38 Voluntary Agencies	5.90%	0.41%	6.31%		0.74%	0.02%	0.64%	0.37%	0.43%
CHO 4	6.04%	0.39%	6.43%	0.00%	0.69%	0.02%	0.57%	0.30%	0.41%
Health Service Executive	7.03%	0.25%	7.28%	0.00%	0.51%	0.14%	0.00%		0.26%
Section 38 Voluntary Agencies	7.45%	0.44%	7.90%	0.00%	0.79%	1.66%	0.00%	3.01%	0.16%
CHO 5	7.35%	0.39%	7.74%	0.00%	0.67%	1.03%	0.00%	3.01%	0.17%
Health Service Executive	9.69%	1.29%	10.97%	0.00%	0.00%	4.30%	0.00%		1.55%
Section 38 Voluntary Agencies	4.09%	0.53%	4.62%	0.00%	0.14%	0.54%	0.11%	0.30%	0.78%
CHO 6	4.98%	0.65%	5.63%	0.00%	0.09%	0.80%	0.09%	0.30%	0.91%
Health Service Executive	3.10%	0.15%	3.24%		0.00%	0.28%	0.00%		0.00%
Section 38 Voluntary Agencies	5.15%	0.30%	5.45%	0.00%	0.23%	0.20%	0.19%	0.07%	0.40%
CHO 7	5.09%	0.29%	5.39%	0.00%	0.23%	0.20%	0.16%	0.07%	0.39%
Health Service Executive	8.10%	0.31%	8.41%	0.00%	0.44%	0.17%	0.00%	0.00%	0.43%
Section 38 Voluntary Agencies	4.71%	0.77%	5.48%	0.00%	0.99%	1.26%	0.28%	0.00%	0.55%
CHO 8	5.49%	0.66%	6.16%	0.00%	0.81%	1.03%	0.14%	0.00%	0.53%
Health Service Executive	7.71%	0.23%	7.94%	0.00%	0.14%	0.48%	0.42%	0.00%	0.23%
Section 38 Voluntary Agencies	4.81%	0.29%	5.10%	0.00%	0.12%	0.25%	0.09%	0.40%	0.51%
CHO 9	5.18%	0.28%	5.46%	0.00%	0.12%	0.26%	0.13%	0.37%	0.46%
Health Service Executive	0.00%	0.00%	0.00%				0.00%		
Other Community Services	0.00%	0.00%	0.00%				0.00%		
Community Services	5.98%	0.36%	6.34%	0.00%	0.36%	0.37%	0.23%	0.24%	0.39%

Covid 19 Absence Rate



October 2024

Health Service Absence Rate - by Admin : Oct 2024	Certified absence	Self-certified absence	Non Covid-19 absence	Covid-19 Absence	Total absence rate	Medical & Dental	Nursing & Midwifery	Health & Social Care Professionals	Management & Administrative	General Support	Patient & Client Care
Total	5.38%	0.60%	5.98%	0.36%	6.34%	2.38%	6.93%	5.10%	5.51%	6.42%	6.86%
Health Service Executive	7.83%	0.66%	8.49%	0.32%	8.81%	0.00%	10.38%	5.90%	6.73%	6.20%	9.70%
Section 38 Voluntary Agencies	4.77%	0.59%	5.35%	0.37%	5.72%	3.13%	5.54%	4.97%	4.94%	6.45%	6.22%



Health Service Absence Rate - by Staff Category: Oct 2024	Certified absence	Self-certified absence	Non Covid-19 absence	Covid-19 Absence	Total absence rate	% Non Covid-19 absence	% Covid-19 absence
CHO 1	8.68%	0.64%	9.32%	0.30%	9.61%	96.93%	3.07%
Medical & Dental	0.00%	0.00%	0.00%	0.00%	0.00%		
Nursing & Midwifery	10.96%	0.50%	11.46%	0.04%	11.50%	99.64%	0.36%
Health & Social Care Professionals	4.16%	0.37%	4.53%	0.00%	4.53%	100.00%	0.00%
Management & Administrative	6.58%	0.29%	6.87%	0.84%	7.72%	89.06%	10.94%
General Support	5.04%	0.28%	5.32%	0.58%	5.90%	90.16%	9.84%
Patient & Client Care	8.61%	0.79%	9.40%	0.37%	9.77%	96.19%	3.81%

Health Service Absence Rate - by Staff Category: Oct 2024	Certified absence	Self-certified absence	Non Covid-19 absence	Covid-19 Absence	Total absence rate	% Non Covid-19 absence	% Covid-19 absence
CHO 2	5.63%	0.47%	6.10%	0.09%	6.19%	98.59%	1.41%
Medical & Dental	0.00%	0.00%	0.00%	0.00%	0.00%		
Nursing & Midwifery	6.53%	0.78%	7.31%	0.05%	7.36%	99.32%	0.68%
Health & Social Care Professionals	4.35%	0.33%	4.68%	0.06%	4.73%	98.77%	1.23%
Management & Administrative	3.99%	0.33%	4.32%	0.15%	4.47%	96.60%	3.40%
General Support	8.94%	0.32%	9.26%	0.00%	9.26%	100.00%	0.00%
Patient & Client Care	6.10%	0.50%	6.61%	0.11%	6.71%	98.38%	1.62%

Health Service Absence Rate - by Staff Category: Oct 2024	Certified absence	Self-certified absence	Non Covid-19 absence	Covid-19 Absence	Total absence rate	% Non Covid-19 absence	% Covid-19 absence
CHO 3	5.41%	0.50%	5.91%	0.40%	6.31%	93.63%	6.37%
Medical & Dental							
Nursing & Midwifery	5.02%	0.43%	5.45%	0.73%	6.18%	88.16%	11.84%
Health & Social Care Professionals	4.20%	0.33%	4.52%	0.16%	4.68%	96.60%	3.40%
Management & Administrative	6.11%	1.23%	7.34%	0.26%	7.60%	96.53%	3.47%
General Support	2.44%	0.50%	2.94%	0.00%	2.94%	100.00%	0.00%
Patient & Client Care	6.06%	0.49%	6.55%	0.42%	6.96%	94.02%	5.98%

Health Service Absence Rate - by Staff Category: Oct 2024	Certified absence	Self-certified absence	Non Covid-19 absence	Covid-19 Absence	Total absence rate	% Non Covid-19 absence	% Covid-19 absence
CHO 4	5.15%	0.89%	6.04%	0.39%	6.43%	93.91%	6.09%
Medical & Dental	0.00%	0.00%	0.00%	0.00%	0.00%		
Nursing & Midwifery	6.19%	0.99%	7.18%	0.69%	7.87%	91.20%	8.80%
Health & Social Care Professionals	5.63%	0.50%	6.12%	0.02%	6.14%	99.65%	0.35%
Management & Administrative	3.87%	0.62%	4.49%	0.57%	5.06%	88.67%	11.33%
General Support	6.88%	0.92%	7.80%	0.30%	8.11%	96.25%	3.75%
Patient & Client Care	4.81%	1.02%	5.82%	0.41%	6.23%	93.42%	6.58%

Health Service Absence Rate - by Staff Category: Oct 2024	Certified absence	Self-certified absence	Non Covid-19 absence	Covid-19 Absence	Total absence rate	% Non Covid-19 absence	% Covid-19 absence
CHO 5	6.63%	0.71%	7.35%	0.39%	7.74%	94.90%	5.10%
Medical & Dental	0.00%	0.00%	0.00%	0.00%	0.00%		
Nursing & Midwifery	8.74%	0.98%	9.73%	0.67%	10.39%	93.60%	6.40%
Health & Social Care Professionals	7.09%	0.39%	7.48%	1.03%	8.52%	87.88%	12.12%
Management & Administrative	6.43%	0.58%	7.02%	0.00%	7.02%	100.00%	0.00%
General Support	1.76%	1.00%	2.76%	3.01%	5.77%	47.81%	52.19%
Patient & Client Care	6.09%	0.74%	6.84%	0.17%	7.01%	97.53%	2.47%

Health Service Absence Rate - by Staff Category: Oct 2024	Certified absence	Self-certified absence	Non Covid-19 absence	Covid-19 Absence	Total absence rate	% Non Covid-19 absence	% Covid-19 absence
CHO 6	4.29%	0.70%	4.98%	0.65%	5.63%	88.50%	11.50%
Medical & Dental	0.00%	0.00%	0.00%	0.00%	0.00%		
Nursing & Midwifery	3.75%	0.70%	4.45%	0.09%	4.54%	97.92%	2.08%
Health & Social Care Professionals	4.29%	0.92%	5.21%	0.80%	6.01%	86.66%	13.34%
Management & Administrative	4.01%	0.13%	4.14%	0.09%	4.23%	97.86%	2.14%
General Support	2.07%	0.37%	2.44%	0.30%	2.74%	88.90%	11.10%
Patient & Client Care	4.74%	0.70%	5.44%	0.91%	6.35%	85.65%	14.35%

Health Service Absence Rate - by Staff Category: Oct 2024	Certified absence	Self-certified absence	Non Covid-19 absence	Covid-19 Absence	Total absence rate	% Non Covid-19 absence	% Covid-19 absence
CHO 7	4.43%	0.67%	5.09%	0.29%	5.39%	94.56%	5.44%
Medical & Dental	1.90%	0.37%	2.26%	0.00%	2.26%	100.00%	0.00%
Nursing & Midwifery	3.85%	1.24%	5.08%	0.23%	5.31%	95.62%	4.38%
Health & Social Care Professionals	3.97%	0.53%	4.50%	0.20%	4.70%	95.73%	4.27%
Management & Administrative	3.72%	0.30%	4.02%	0.16%	4.18%	96.16%	3.84%
General Support	5.51%	0.36%	5.87%	0.07%	5.93%	98.85%	1.15%
Patient & Client Care	4.79%	0.65%	5.43%	0.39%	5.82%	93.24%	6.76%

Health Service Absence Rate - by Staff Category: Oct 2024	Certified absence	Self-certified absence	Non Covid-19 absence	Covid-19 Absence	Total absence rate	% Non Covid-19 absence	% Covid-19 absence
CHO 8	4.99%	0.50%	5.49%	0.66%	6.16%	89.24%	10.76%
Medical & Dental	0.00%	71.01%	71.01%	0.00%	71.01%	100.00%	0.00%
Nursing & Midwifery	5.16%	0.42%	5.58%	0.81%	6.39%	87.26%	12.74%
Health & Social Care Professionals	4.23%	0.42%	4.65%	1.03%	5.68%	81.79%	18.21%
Management & Administrative	4.06%	0.18%	4.24%	0.14%	4.38%	96.83%	3.17%
General Support	4.54%	0.13%	4.67%	0.00%	4.67%	100.00%	0.00%
Patient & Client Care	5.43%	0.54%	5.97%	0.53%	6.50%	91.86%	8.14%

Health Service Absence Rate - by Staff Category: Oct 2024	Certified absence	Self-certified absence	Non Covid-19 absence	Covid-19 Absence	Total absence rate	% Non Covid-19 absence	% Covid-19 absence
CHO 9	4.75%	0.43%	5.18%	0.28%	5.46%	94.87%	5.13%
Medical & Dental	0.00%	0.00%	0.00%	0.00%	0.00%		
Nursing & Midwifery	4.30%	0.46%	4.76%	0.12%	4.88%	97.50%	2.50%
Health & Social Care Professionals	3.33%	0.43%	3.76%	0.26%	4.02%	93.53%	6.47%
Management & Administrative	6.01%	0.25%	6.25%	0.13%	6.38%	97.93%	2.07%
General Support	6.71%	0.34%	7.04%	0.37%	7.41%	95.01%	4.99%
Patient & Client Care	6.26%	0.48%	6.74%	0.46%	7.20%	93.55%	6.45%

Health Service Absence Rate - by Staff Category: Oct 2024	Certified absence	Self-certified absence	Non Covid-19 absence	Covid-19 Absence	Total absence rate	% Non Covid-19 absence	% Covid-19 absence
Other Comm	0.00%	0.00%	0.00%	0.00%	0.00%		
Medical & Dental							
Nursing & Midwifery							
Health & Social Care Professionals							
Management & Administrative	0.00%	0.00%	0.00%	0.00%	0.00%		
General Support							
Patient & Client Care							

Health Service Absence Rate - by Staff Category: Oct 2024	Certified absence	Self- certified absence	Non Covid-19 absence	Covid-19 Absence	Total absence rate	% Non Covid-19 absence	% Covid-19 absence
Aurora	7.23%	0.65%	7.87%	0.16%	8.03%	98.04%	1.96%
Medical & Dental							
Nursing & Midwifery	6.49%	0.14%	6.63%	0.24%	6.87%	96.54%	3.46%
Health & Social Care Professionals	6.62%	0.32%	6.94%	0.41%	7.35%	94.42%	5.58%
Management & Administrative	8.22%	1.09%	9.31%	0.00%	9.31%	100.00%	0.00%
General Support	0.00%	0.00%	0.00%	0.00%	0.00%		
Patient & Client Care	7.52%	0.75%	8.26%	0.12%	8.39%	98.51%	1.49%

Health Service Absence Rate - by Staff Category: Oct 2024	Certified absence	Self- certified absence	Non Covid-19 absence	Covid-19 Absence	Total absence rate	% Non Covid-19 absence	% Covid-19 absence
Avista Dublin	2.96%	0.42%	3.38%	0.58%	3.96%	85.45%	14.55%
Medical & Dental	0.00%	0.00%	0.00%	0.00%	0.00%		
Nursing & Midwifery	2.48%	0.42%	2.90%	0.19%	3.09%	93.73%	6.27%
Health & Social Care Professionals	1.88%	0.52%	2.40%	0.63%	3.03%	79.11%	20.89%
Management & Administrative	4.22%	0.10%	4.32%	0.23%	4.55%	94.85%	5.15%
General Support	2.55%	0.06%	2.61%	0.36%	2.96%	88.00%	12.00%
Patient & Client Care	3.90%	0.52%	4.42%	0.93%	5.35%	82.56%	17.44%

Health Service Absence Rate - by Staff Category: Oct 2024	Certified absence	Self- certified absence	Non Covid-19 absence	Covid-19 Absence	Total absence rate	% Non Covid-19 absence	% Covid-19 absence
Avista Limerick	4.29%	0.37%	4.66%	0.39%	5.04%	92.35%	7.65%
Medical & Dental							
Nursing & Midwifery	3.23%	0.36%	3.60%	0.53%	4.12%	87.22%	12.78%
Health & Social Care Professionals	4.50%	0.26%	4.76%	0.32%	5.08%	93.79%	6.21%
Management & Administrative	4.74%	0.00%	4.74%	0.36%	5.10%	92.95%	7.05%
General Support	2.77%	0.48%	3.25%	0.00%	3.25%	100.00%	0.00%
Patient & Client Care	5.71%	0.47%	6.18%	0.38%	6.56%	94.19%	5.81%

Health Service Absence Rate - by Staff Category: Oct 2024	Certified absence	Self- certified absence	Non Covid-19 absence	Covid-19 Absence	Total absence rate	% Non Covid-19 absence	% Covid-19 absence
Avista Roscrea	4.49%	0.34%	4.82%	0.76%	5.59%	86.33%	13.67%
Medical & Dental							
Nursing & Midwifery	3.48%	0.04%	3.51%	0.51%	4.03%	87.28%	12.72%
Health & Social Care Professionals	4.61%	0.00%	4.61%	0.77%	5.38%	85.70%	14.30%
Management & Administrative	6.07%	0.45%	6.52%	0.00%	6.52%	100.00%	0.00%
General Support							
Patient & Client Care	4.53%	0.43%	4.96%	0.86%	5.82%	85.20%	14.80%

Health Service Absence Rate - by Staff Category: Oct 2024	Certified absence	Self-certified absence	Non Covid-19 absence	Covid-19 Absence	Total absence rate	% Non Covid-19 absence	% Covid-19 absence
Bros. of Charity, Clare	3.85%	0.43%	4.28%	0.28%	4.56%	93.92%	6.08%
Medical & Dental							
Nursing & Midwifery	0.00%	0.00%	0.00%	0.00%	0.00%		
Health & Social Care Professionals	1.49%	0.47%	1.97%	0.00%	1.97%	100.00%	0.00%
Management & Administrative	1.35%	0.00%	1.35%	0.00%	1.35%	100.00%	0.00%
General Support							
Patient & Client Care	4.61%	0.44%	5.05%	0.36%	5.41%	93.29%	6.71%

Health Service Absence Rate - by Staff Category: Oct 2024	Certified absence	Self-certified absence	Non Covid-19 absence	Covid-19 Absence	Total absence rate	% Non Covid-19 absence	% Covid-19 absence
Bros. of Charity, Limerick	7.34%	0.59%	7.93%	0.36%	8.29%	95.65%	4.35%
Medical & Dental							
Nursing & Midwifery	8.64%	0.70%	9.34%	1.19%	10.53%	88.72%	11.28%
Health & Social Care Professionals	5.25%	0.33%	5.58%	0.00%	5.58%	100.00%	0.00%
Management & Administrative	3.93%	1.37%	5.30%	0.00%	5.30%	100.00%	0.00%
General Support	3.29%	0.00%	3.29%	0.00%	3.29%	100.00%	0.00%
Patient & Client Care	7.96%	0.62%	8.58%	0.21%	8.79%	97.60%	2.40%

Health Service Absence Rate - by Staff Category: Oct 2024	Certified absence	Self- certified absence	Non Covid-19 absence	Covid-19 Absence	Total absence rate	% Non Covid-19 absence	% Covid-19 absence
Bros. of Charity, Southern	4.62%	0.48%	5.10%	0.12%	5.23%	97.68%	2.32%
Medical & Dental							
Nursing & Midwifery	4.99%	0.91%	5.90%	0.38%	6.28%	93.98%	6.02%
Health & Social Care Professionals	5.25%	0.40%	5.65%	0.00%	5.65%	100.00%	0.00%
Management & Administrative	6.55%	0.64%	7.19%	0.60%	7.79%	92.34%	7.66%
General Support	8.23%	0.00%	8.23%	0.00%	8.23%	100.00%	0.00%
Patient & Client Care	3.98%	0.46%	4.44%	0.10%	4.53%	97.85%	2.15%

Health Service Absence Rate - by Staff Category: Oct 2024	Certified absence	Self- certified absence	Non Covid-19 absence	Covid-19 Absence	Total absence rate	% Non Covid-19 absence	% Covid-19 absence
Bros. of Charity, Waterford	7.08%	0.88%	7.96%	0.42%	8.37%	95.00%	5.00%
Medical & Dental	0.00%	0.00%	0.00%	0.00%	0.00%		
Nursing & Midwifery	7.75%	1.24%	8.99%	0.11%	9.09%	98.83%	1.17%
Health & Social Care Professionals	9.58%	0.58%	10.16%	2.32%	12.48%	81.43%	18.57%
Management & Administrative	8.55%	0.64%	9.19%	0.00%	9.19%	100.00%	0.00%
General Support	5.39%	2.02%	7.41%	0.00%	7.41%	100.00%	0.00%
Patient & Client Care	6.45%	0.89%	7.34%	0.16%	7.50%	97.87%	2.13%

Health Service Absence Rate - by Staff Category: Oct 2024	Certified absence	Self-certified absence	Non Covid-19 absence	Covid-19 Absence	Total absence rate	% Non Covid-19 absence	% Covid-19 absence
Bros. of Charity, West Region	5.23%	0.46%	5.69%	0.07%	5.76%	98.81%	1.19%
Medical & Dental	0.00%	0.00%	0.00%	0.00%	0.00%		
Nursing & Midwifery	4.94%	0.75%	5.70%	0.03%	5.73%	99.41%	0.59%
Health & Social Care Professionals	3.80%	0.29%	4.09%	0.07%	4.16%	98.27%	1.73%
Management & Administrative	2.80%	0.44%	3.24%	0.13%	3.37%	96.02%	3.98%
General Support	9.65%	0.35%	10.00%	0.00%	10.00%	100.00%	0.00%
Patient & Client Care	5.93%	0.48%	6.42%	0.07%	6.49%	98.88%	1.12%

Health Service Absence Rate - by Staff Category: Oct 2024	Certified absence	Self-certified absence	Non Covid-19 absence	Covid-19 Absence	Total absence rate	% Non Covid-19 absence	% Covid-19 absence
Carriglea Cairde Services	3.94%	0.36%	4.31%	1.06%	5.36%	80.29%	19.71%
Medical & Dental							
Nursing & Midwifery	9.36%	1.48%	10.84%	3.01%	13.85%	78.27%	21.73%
Health & Social Care Professionals	8.70%	0.00%	8.70%	0.53%	9.23%	94.21%	5.79%
Management & Administrative	0.00%	0.00%	0.00%	0.00%	0.00%		
General Support	0.00%	0.97%	0.97%	8.58%	9.56%	10.16%	89.84%
Patient & Client Care	1.68%	0.08%	1.76%	0.23%	2.00%	88.27%	11.73%

Health Service Absence Rate - by Staff Category: Oct 2024	Certified absence	Self-certified absence	Non Covid-19 absence	Covid-19 Absence	Total absence rate	% Non Covid-19 absence	% Covid-19 absence
Central Remedial Clinic	6.34%	0.49%	6.84%	0.06%	6.90%	99.11%	0.89%
Medical & Dental	0.00%	0.00%	0.00%	0.00%	0.00%		
Nursing & Midwifery	13.45%	0.26%	13.71%	0.00%	13.71%	100.00%	0.00%
Health & Social Care Professionals	3.37%	0.41%	3.78%	0.00%	3.78%	100.00%	0.00%
Management & Administrative	11.57%	0.32%	11.88%	0.00%	11.88%	100.00%	0.00%
General Support	7.55%	0.31%	7.86%	0.00%	7.86%	100.00%	0.00%
Patient & Client Care	7.55%	0.79%	8.34%	0.22%	8.55%	97.48%	2.52%

Health Service Absence Rate - by Staff Category: Oct 2024	Certified absence	Self-certified absence	Non Covid-19 absence	Covid-19 Absence	Total absence rate	% Non Covid-19 absence	% Covid-19 absence
Cheeverstown House	4.89%	0.99%	5.88%	0.29%	6.17%	95.37%	4.63%
Medical & Dental							
Nursing & Midwifery	5.11%	1.73%	6.84%	0.06%	6.90%	99.11%	0.89%
Health & Social Care Professionals	3.25%	0.54%	3.79%	0.42%	4.21%	89.99%	10.01%
Management & Administrative	2.11%	0.00%	2.11%	0.00%	2.11%	100.00%	0.00%
General Support	12.90%	0.17%	13.06%	0.00%	13.06%	100.00%	0.00%
Patient & Client Care	4.63%	0.91%	5.54%	0.49%	6.03%	91.94%	8.06%

Health Service Absence Rate - by Staff Category: Oct 2024	Certified absence	Self-certified absence	Non Covid-19 absence	Covid-19 Absence	Total absence rate	% Non Covid-19 absence	% Covid-19 absence
Children's Sunshine Home	2.54%	0.55%	3.09%	0.00%	3.09%	100.00%	0.00%
Medical & Dental							
Nursing & Midwifery	2.72%	0.52%	3.24%	0.00%	3.24%	100.00%	0.00%
Health & Social Care Professionals	0.00%	0.00%	0.00%	0.00%	0.00%		
Management & Administrative	0.00%	0.00%	0.00%	0.00%	0.00%		
General Support	0.00%	0.00%	0.00%	0.00%	0.00%		
Patient & Client Care	3.97%	0.99%	4.96%	0.00%	4.96%	100.00%	0.00%

Health Service Absence Rate - by Staff Category: Oct 2024	Certified absence	Self-certified absence	Non Covid-19 absence	Covid-19 Absence	Total absence rate	% Non Covid-19 absence	% Covid-19 absence
Cope Foundation	4.96%	1.28%	6.24%	0.57%	6.81%	91.64%	8.36%
Medical & Dental							
Nursing & Midwifery	5.82%	1.11%	6.94%	0.82%	7.76%	89.40%	10.60%
Health & Social Care Professionals	3.05%	0.72%	3.77%	0.07%	3.84%	98.14%	1.86%
Management & Administrative	2.52%	0.88%	3.40%	0.23%	3.63%	93.71%	6.29%
General Support	9.66%	1.91%	11.57%	0.52%	12.10%	95.67%	4.33%
Patient & Client Care	5.04%	1.44%	6.48%	0.62%	7.10%	91.28%	8.72%

Health Service Absence Rate - by Staff Category: Oct 2024	Certified absence	Self-certified absence	Non Covid-19 absence	Covid-19 Absence	Total absence rate	% Non Covid-19 absence	% Covid-19 absence
Kare, Newbridge, Co Kildare	3.21%	0.48%	3.69%	0.45%	4.14%	89.03%	10.97%
Medical & Dental							
Nursing & Midwifery	0.75%	0.27%	1.02%	0.78%	1.80%	56.48%	43.52%
Health & Social Care Professionals	3.47%	0.55%	4.02%	0.00%	4.02%	100.00%	0.00%
Management & Administrative	0.75%	0.70%	1.45%	0.00%	1.45%	100.00%	0.00%
General Support	0.00%	2.44%	2.44%	10.26%	12.70%	19.23%	80.77%
Patient & Client Care	3.69%	0.42%	4.11%	0.66%	4.77%	86.12%	13.88%

Health Service Absence Rate - by Staff Category: Oct 2024	Certified absence	Self-certified absence	Non Covid-19 absence	Covid-19 Absence	Total absence rate	% Non Covid-19 absence	% Covid-19 absence
Muiriosa Foundation, Laois/Offaly	4.37%	0.42%	4.79%	0.91%	5.70%	84.08%	15.92%
Medical & Dental							
Nursing & Midwifery	5.96%	0.67%	6.63%	0.00%	6.63%	100.00%	0.00%
Health & Social Care Professionals	5.51%	0.22%	5.73%	1.73%	7.46%	76.80%	23.20%
Management & Administrative	4.49%	0.00%	4.49%	0.00%	4.49%	100.00%	0.00%
General Support	0.00%	0.00%	0.00%	0.00%	0.00%		
Patient & Client Care	3.45%	0.55%	3.99%	0.62%	4.61%	86.52%	13.48%

Health Service Absence Rate - by Staff Category: Oct 2024	Certified absence	Self- certified absence	Non Covid-19 absence	Covid-19 Absence	Total absence rate	% Non Covid-19 absence	% Covid-19 absence
Muiriosa Foundation, Longford/W	4.10%	0.26%	4.36%	0.61%	4.97%	87.68%	12.32%
Medical & Dental							
Nursing & Midwifery	3.41%	0.97%	4.38%	1.95%	6.33%	69.23%	30.77%
Health & Social Care Professionals	3.31%	0.30%	3.61%	1.28%	4.89%	73.76%	26.24%
Management & Administrative	0.24%	0.00%	0.24%	0.00%	0.24%	100.00%	0.00%
General Support	0.00%	0.00%	0.00%	0.00%	0.00%		
Patient & Client Care	5.10%	0.21%	5.31%	0.16%	5.47%	97.10%	2.90%

Health Service Absence Rate - by Staff Category: Oct 2024	Certified absence	Self- certified absence	Non Covid-19 absence	Covid-19 Absence	Total absence rate	% Non Covid-19 absence	% Covid-19 absence
Muiriosa Foundation, South Kilda	4.07%	0.68%	4.75%	0.63%	5.38%	88.31%	11.69%
Medical & Dental							
Nursing & Midwifery	4.31%	0.63%	4.93%	1.41%	6.34%	77.75%	22.25%
Health & Social Care Professionals	1.81%	0.80%	2.61%	0.61%	3.21%	81.06%	18.94%
Management & Administrative	7.06%	0.00%	7.06%	0.00%	7.06%	100.00%	0.00%
General Support	9.30%	0.00%	9.30%	0.00%	9.30%	100.00%	0.00%
Patient & Client Care	4.31%	0.81%	5.11%	0.62%	5.74%	89.14%	10.86%

Health Service Absence Rate - by Staff Category: Oct 2024	Certified absence	Self- certified absence	Non Covid-19 absence	Covid-19 Absence	Total absence rate	% Non Covid-19 absence	% Covid-19 absence
Peamount Hospital (Newcastle)	2.94%	0.93%	3.87%	0.39%	4.27%	90.78%	9.22%
Medical & Dental	0.00%	0.40%	0.40%	0.00%	0.40%	100.00%	0.00%
Nursing & Midwifery	2.51%	1.17%	3.68%	0.27%	3.95%	93.21%	6.79%
Health & Social Care Professionals	5.64%	0.66%	6.30%	0.00%	6.30%	100.00%	0.00%
Management & Administrative	0.99%	0.45%	1.44%	0.77%	2.21%	64.98%	35.02%
General Support	0.95%	0.34%	1.28%	0.00%	1.28%	100.00%	0.00%
Patient & Client Care	3.40%	1.11%	4.51%	0.61%	5.13%	88.07%	11.93%

Health Service Absence Rate - by Staff Category: Oct 2024	Certified absence	Self- certified absence	Non Covid-19 absence	Covid-19 Absence	Total absence rate	% Non Covid-19 absence	% Covid-19 absence
Stewart's Hospital, (Palmerstown)	4.59%	0.52%	5.11%	0.23%	5.34%	95.71%	4.29%
Medical & Dental							
Nursing & Midwifery	0.97%	0.88%	1.85%	0.00%	1.85%	100.00%	0.00%
Health & Social Care Professionals	6.86%	0.48%	7.33%	0.43%	7.76%	94.46%	5.54%
Management & Administrative	5.66%	0.29%	5.94%	0.00%	5.94%	100.00%	0.00%
General Support	3.59%	0.46%	4.05%	0.00%	4.05%	100.00%	0.00%
Patient & Client Care	4.72%	0.50%	5.22%	0.27%	5.50%	95.03%	4.97%

Health Service Absence Rate - by Staff Category: Oct 2024	Certified absence	Self- certified absence	Non Covid-19 absence	Covid-19 Absence	Total absence rate	% Non Covid-19 absence	% Covid-19 absence
St. John of God, Drumcar	4.35%	0.47%	4.81%	0.83%	5.64%	85.28%	14.72%
Medical & Dental	0.00%	100.00%	100.00%	0.00%	100.00%	100.00%	0.00%
Nursing & Midwifery	3.56%	0.00%	3.56%	1.02%	4.59%	77.67%	22.33%
Health & Social Care Professionals	5.97%	0.36%	6.33%	1.09%	7.42%	85.31%	14.69%
Management & Administrative	1.54%	0.00%	1.54%	1.28%	2.82%	54.55%	45.45%
General Support	3.88%	0.38%	4.25%	0.00%	4.25%	100.00%	0.00%
Patient & Client Care	4.64%	0.51%	5.15%	0.68%	5.83%	88.29%	11.71%

Health Service Absence Rate - by Staff Category: Oct 2024	Certified absence	Self- certified absence	Non Covid-19 absence	Covid-19 Absence	Total absence rate	% Non Covid-19 absence	% Covid-19 absence
St John of God HQ	0.00%	0.13%	0.13%	0.00%	0.13%	100.00%	0.00%
Medical & Dental							
Nursing & Midwifery	0.00%	9.58%	9.58%	0.00%	9.58%	100.00%	0.00%
Health & Social Care Professionals	0.00%	0.00%	0.00%	0.00%	0.00%		
Management & Administrative	0.00%	0.00%	0.00%	0.00%	0.00%		
General Support	0.00%	0.00%	0.00%	0.00%	0.00%		
Patient & Client Care							

Health Service Absence Rate - by Staff Category: Oct 2024	Certified absence	Self-certified absence	Non Covid-19 absence	Covid-19 Absence	Total absence rate	% Non Covid-19 absence	% Covid-19 absence
St. John of God (IDS)	3.53%	0.75%	4.27%	0.76%	5.04%	84.83%	15.17%
Medical & Dental	0.00%	0.00%	0.00%	0.00%	0.00%		
Nursing & Midwifery	1.56%	0.51%	2.07%	0.29%	2.35%	87.84%	12.16%
Health & Social Care Professionals	5.30%	1.05%	6.34%	0.64%	6.99%	90.77%	9.23%
Management & Administrative	3.96%	0.29%	4.26%	0.00%	4.26%	100.00%	0.00%
General Support	2.88%	0.00%	2.88%	0.00%	2.88%	100.00%	0.00%
Patient & Client Care	2.37%	0.66%	3.04%	1.27%	4.31%	70.50%	29.50%

Health Service Absence Rate - by Staff Category: Oct 2024	Certified absence	Self-certified absence	Non Covid-19 absence	Covid-19 Absence	Total absence rate	% Non Covid-19 absence	% Covid-19 absence
St. John of God, Kerry	6.27%	0.48%	6.75%	0.58%	7.33%	92.08%	7.92%
Medical & Dental							
Nursing & Midwifery	8.42%	0.75%	9.17%	0.88%	10.06%	91.21%	8.79%
Health & Social Care Professionals	6.31%	0.48%	6.80%	0.00%	6.80%	100.00%	0.00%
Management & Administrative	3.35%	0.21%	3.56%	1.89%	5.45%	65.38%	34.62%
General Support	3.88%	0.40%	4.28%	0.37%	4.65%	92.14%	7.86%
Patient & Client Care	6.38%	0.44%	6.82%	0.52%	7.34%	92.91%	7.09%

Health Service Absence Rate - by Staff Category: Oct 2024	Certified absence	Self- certified absence	Non Covid-19 absence	Covid-19 Absence	Total absence rate	% Non Covid-19 absence	% Covid-19 absence
St. John of God Liffey Services	5.80%	0.68%	6.48%	0.25%	6.73%	96.22%	3.78%
Medical & Dental	24.13%	0.00%	24.13%	0.00%	24.13%	100.00%	0.00%
Nursing & Midwifery	7.72%	1.34%	9.06%	0.50%	9.56%	94.77%	5.23%
Health & Social Care Professionals	3.14%	0.52%	3.66%	0.18%	3.84%	95.34%	4.66%
Management & Administrative	5.48%	0.28%	5.76%	0.28%	6.05%	95.32%	4.68%
General Support	9.40%	0.27%	9.67%	0.00%	9.67%	100.00%	0.00%
Patient & Client Care	7.20%	0.72%	7.92%	0.28%	8.20%	96.64%	3.36%

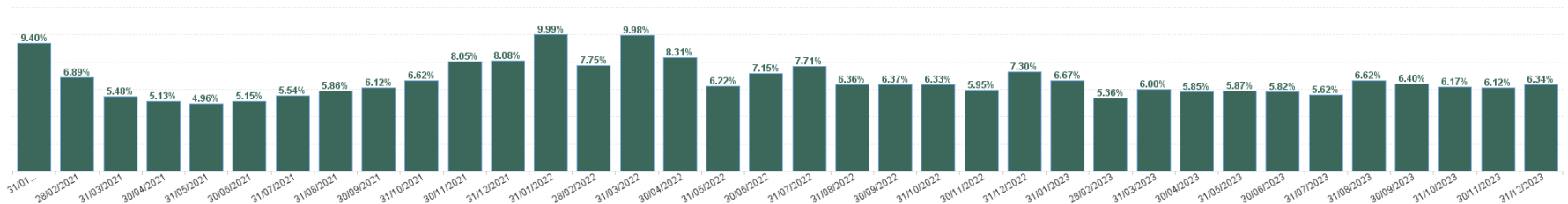
Health Service Absence Rate - by Staff Category: Oct 2024	Certified absence	Self- certified absence	Non Covid-19 absence	Covid-19 Absence	Total absence rate	% Non Covid-19 absence	% Covid-19 absence
St. Michael's House, Dublin	5.16%	0.37%	5.53%	0.11%	5.64%	98.06%	1.94%
Medical & Dental	0.00%	0.00%	0.00%	0.00%	0.00%		
Nursing & Midwifery	3.93%	0.34%	4.27%	0.04%	4.31%	99.12%	0.88%
Health & Social Care Professionals	4.04%	0.42%	4.46%	0.15%	4.61%	96.82%	3.18%
Management & Administrative	6.41%	0.13%	6.54%	0.00%	6.54%	100.00%	0.00%
General Support	10.30%	0.48%	10.78%	0.52%	11.30%	95.43%	4.57%
Patient & Client Care	7.40%	0.37%	7.77%	0.06%	7.82%	99.25%	0.75%

Health Service Absence Rate - by Staff Category: Oct 2024	Certified absence	Self- certified absence	Non Covid-19 absence	Covid-19 Absence	Total absence rate	% Non Covid-19 absence	% Covid-19 absence
Sunbeam House Services	3.56%	0.73%	4.29%	0.42%	4.71%	91.10%	8.90%
Medical & Dental							
Nursing & Midwifery	1.81%	0.49%	2.29%	0.00%	2.29%	100.00%	0.00%
Health & Social Care Professionals	3.39%	0.89%	4.28%	0.47%	4.75%	90.17%	9.83%
Management & Administrative	3.63%	0.04%	3.67%	0.23%	3.90%	94.03%	5.97%
General Support	1.44%	1.03%	2.48%	0.86%	3.33%	74.26%	25.74%
Patient & Client Care	4.11%	0.77%	4.88%	0.46%	5.34%	91.37%	8.63%

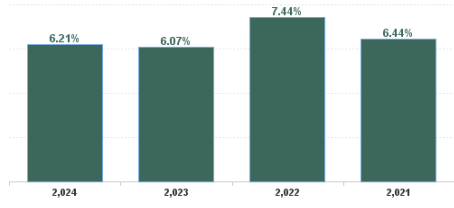
Year / Month	Certified absence	Self-certified absence	Non Covid-19 absence	Covid-19 Absence	Total absence rate	Medical & Dental	Nursing & Midwifery	Health & Social Care Professionals	Management & Administrative	General Support	Patient & Client Care
Oct 2024	5.38%	0.60%	5.98%	0.36%	6.34%	2.38%	6.93%	5.10%	5.51%	6.42%	6.86%
Sep 2024	4.99%	0.52%	5.51%	0.44%	5.95%	2.61%	6.92%	4.97%	4.59%	5.97%	6.28%
Aug 2024	5.02%	0.52%	5.54%	0.62%	6.16%	3.49%	6.63%	5.11%	5.01%	6.43%	6.68%
Jul 2024	5.33%	0.58%	5.91%	0.97%	6.88%	4.03%	7.04%	5.94%	5.38%	6.51%	7.56%
Jun 2024	5.20%	0.56%	5.75%	0.62%	6.37%	3.63%	6.69%	5.23%	4.72%	6.45%	7.04%
May 2024	5.19%	0.57%	5.76%	0.21%	5.97%	3.19%	6.49%	4.80%	4.15%	6.31%	6.60%
Apr 2024	5.12%	0.54%	5.66%	0.18%	5.85%	4.70%	6.14%	5.16%	3.76%	6.37%	6.37%
Mar 2024	5.11%	0.55%	5.66%	0.19%	5.84%	1.04%	6.10%	4.80%	4.11%	5.88%	6.54%
Feb 2024	5.11%	0.61%	5.72%	0.34%	6.06%	3.49%	6.27%	5.11%	3.92%	6.69%	6.74%
Jan 2024	5.30%	0.70%	5.99%	0.64%	6.63%	2.95%	7.04%	5.64%	3.86%	7.12%	7.40%
2024	5.18%	0.57%	5.75%	0.45%	6.21%	3.15%	6.63%	5.19%	4.50%	6.41%	6.81%
Dec 2023	5.04%	0.70%	5.74%	0.60%	6.34%	3.87%	6.71%	5.58%	4.39%	7.36%	6.79%
Nov 2023	5.07%	0.65%	5.72%	0.40%	6.12%	0.52%	6.83%	5.17%	4.19%	6.37%	6.65%
Oct 2023	5.00%	0.61%	5.60%	0.57%	6.17%	1.25%	6.78%	5.15%	4.32%	7.05%	6.69%
Sep 2023	5.02%	0.57%	5.59%	0.81%	6.40%	0.66%	6.85%	5.44%	3.92%	6.27%	7.13%
Aug 2023	5.27%	0.58%	5.84%	0.78%	6.62%	1.95%	7.10%	5.38%	4.50%	7.29%	7.35%
Jul 2023	4.69%	0.55%	5.24%	0.38%	5.62%	0.59%	6.09%	4.49%	3.59%	7.20%	6.20%
Jun 2023	4.96%	0.56%	5.52%	0.30%	5.82%	2.28%	6.50%	4.87%	4.21%	5.97%	6.25%
May 2023	4.97%	0.51%	5.48%	0.39%	5.87%	1.41%	5.99%	5.15%	4.00%	6.85%	6.41%
Apr 2023	4.86%	0.54%	5.40%	0.45%	5.85%	1.00%	6.08%	5.15%	3.78%	6.88%	6.35%
Mar 2023	4.87%	0.58%	5.45%	0.55%	6.00%	0.83%	5.85%	5.57%	4.28%	7.22%	6.47%
Feb 2023	4.39%	0.53%	4.91%	0.45%	5.36%	3.87%	5.61%	4.43%	4.03%	6.53%	5.88%
Jan 2023	5.10%	0.66%	5.77%	0.90%	6.67%	3.33%	7.07%	5.68%	3.94%	7.18%	7.38%
2023	4.94%	0.59%	5.52%	0.55%	6.07%	1.75%	6.45%	5.17%	4.10%	6.84%	6.63%
Dec 2022	5.37%	0.74%	6.11%	1.19%	7.30%	0.90%	7.26%	6.63%	4.38%	7.01%	8.13%
Nov 2022	4.66%	0.56%	5.22%	0.73%	5.95%	1.46%	6.47%	4.83%	3.64%	6.19%	6.73%
Oct 2022	4.92%	0.61%	5.52%	0.80%	6.33%	1.83%	6.25%	5.27%	3.70%	6.77%	7.31%
Sep 2022	5.06%	0.60%	5.66%	0.71%	6.37%	1.58%	6.74%	4.97%	4.16%	6.40%	7.26%
Aug 2022	4.98%	0.47%	5.45%	0.91%	6.36%	3.43%	6.35%	5.40%	3.75%	6.27%	7.38%
Jul 2022	5.21%	0.47%	5.69%	2.02%	7.71%	3.32%	7.88%	6.30%	4.70%	7.61%	8.79%
Jun 2022	4.73%	0.65%	5.38%	1.77%	7.15%	3.41%	7.17%	6.27%	4.93%	6.55%	7.97%
May 2022	4.56%	0.61%	5.17%	1.05%	6.22%	3.56%	6.74%	4.19%	4.51%	6.56%	7.44%
Apr 2022	4.79%	0.67%	5.46%	2.85%	8.31%	1.64%	9.11%	6.97%	5.10%	8.60%	9.11%
Mar 2022	4.83%	0.70%	5.53%	4.45%	9.98%	3.16%	11.46%	8.09%	7.17%	9.99%	10.72%
Feb 2022	4.18%	0.64%	4.83%	2.92%	7.75%	1.40%	8.51%	6.74%	5.06%	6.78%	8.46%
Jan 2022	4.26%	0.64%	4.90%	5.09%	9.99%	1.46%	10.96%	8.37%	6.01%	8.31%	11.16%
2022	4.79%	0.61%	5.41%	2.04%	7.44%	2.49%	7.93%	6.12%	4.74%	7.19%	8.38%
Dec 2021	4.64%	0.67%	5.30%	2.77%	8.08%	3.03%	8.69%	6.92%	4.87%	7.74%	8.89%
Nov 2021	4.87%	0.73%	5.61%	2.45%	8.05%	3.69%	9.12%	6.90%	5.86%	7.16%	8.63%
Oct 2021	4.78%	0.55%	5.33%	1.29%	6.62%	2.97%	7.65%	5.70%	4.64%	6.63%	6.97%
Sep 2021	4.62%	0.51%	5.14%	0.98%	6.12%	7.70%	6.87%	5.19%	4.18%	5.48%	6.59%
Aug 2021	4.60%	0.38%	4.98%	0.88%	5.86%	10.75%	6.05%	4.80%	3.98%	4.96%	6.62%
Jul 2021	4.53%	0.42%	4.94%	0.59%	5.54%	5.18%	5.84%	4.71%	3.46%	6.24%	6.04%
Jun 2021	4.10%	0.51%	4.61%	0.54%	5.15%	3.20%	5.39%	4.28%	3.04%	5.23%	5.79%
May 2021	3.87%	0.41%	4.28%	0.67%	4.96%	2.52%	5.19%	4.20%	2.32%	4.47%	5.67%
Apr 2021	3.90%	0.38%	4.29%	0.84%	5.13%	2.01%	5.81%	4.54%	2.66%	5.36%	5.49%
Mar 2021	3.96%	0.49%	4.46%	1.02%	5.48%	2.20%	5.72%	4.88%	3.13%	5.29%	6.06%
Feb 2021	4.35%	0.55%	4.90%	1.99%	6.89%	1.33%	7.54%	6.11%	2.94%	6.11%	7.70%
Jan 2021	4.57%	0.35%	4.92%	4.48%	9.40%	0.92%	10.46%	8.06%	3.52%	9.46%	10.50%
2021	4.40%	0.50%	4.90%	1.55%	6.44%	3.86%	7.02%	5.53%	3.72%	6.16%	7.09%

Year / Month	Certified absence	Self-certified absence	Non Covid-19 absence	Covid-19 Absence	Total absence rate	CHO 1	CHO 2	CHO 3	CHO 4	CHO 5	CHO 6	CHO 7	CHO 8	CHO 9	Other Comm	Social Care
Oct 2024	5.38%	0.60%	5.98%	0.36%	6.34%	9.61%	6.19%	6.31%	6.43%	7.74%	5.63%	5.39%	6.16%	5.46%	0.00%	6.34%
Sep 2024	4.99%	0.52%	5.51%	0.44%	5.95%	9.11%	5.56%	5.54%	5.86%	8.12%	4.26%	5.27%	5.55%	5.47%	0.00%	5.95%
Aug 2024	5.02%	0.52%	5.54%	0.62%	6.16%	9.36%	6.31%	5.59%	6.19%	7.70%	5.26%	5.85%	5.22%	5.42%	0.00%	6.16%
Jul 2024	5.33%	0.58%	5.91%	0.97%	6.88%	10.91%	6.51%	6.62%	7.42%	7.76%	6.12%	6.24%	6.68%	5.56%	0.00%	6.88%
Jun 2024	5.20%	0.56%	5.75%	0.62%	6.37%	10.37%	6.39%	5.96%	6.41%	7.54%	5.37%	5.61%	6.19%	5.35%	0.00%	6.37%
May 2024	5.19%	0.57%	5.76%	0.21%	5.97%	9.79%	5.59%	5.97%	5.44%	7.06%	5.62%	5.70%	5.74%	4.76%	0.00%	5.97%
Apr 2024	5.12%	0.54%	5.66%	0.18%	5.85%	9.11%	6.37%	5.90%	5.44%	6.70%	4.53%	5.10%	5.27%	5.12%	0.00%	5.85%
Mar 2024	5.11%	0.55%	5.66%	0.19%	5.84%	9.90%	6.16%	5.25%	5.88%	7.26%	4.84%	5.13%	5.58%	4.78%	0.00%	5.84%
Feb 2024	5.11%	0.61%	5.72%	0.34%	6.06%	9.69%	5.77%	5.38%	6.09%	6.47%	5.88%	5.40%	6.37%	5.15%	0.00%	6.06%
Jan 2024	5.30%	0.70%	5.99%	0.64%	6.63%	10.84%	7.26%	6.01%	6.72%	7.24%	5.91%	5.80%	6.64%	5.34%	0.00%	6.63%
2024	5.18%	0.57%	5.75%	0.45%	6.21%	9.88%	6.18%	5.85%	6.22%	7.36%	5.34%	5.54%	5.96%	5.24%	0.00%	6.21%
Dec 2023	5.04%	0.70%	5.74%	0.60%	6.34%	9.89%	6.75%	5.25%	6.45%	7.10%	6.32%	5.20%	6.03%	6.02%	3.53%	6.34%
Nov 2023	5.07%	0.65%	5.72%	0.40%	6.12%	9.25%	6.15%	5.44%	6.18%	6.52%	5.86%	5.48%	6.21%	5.44%	0.00%	6.12%
Oct 2023	5.00%	0.61%	5.60%	0.57%	6.17%	9.05%	5.76%	5.88%	6.42%	6.79%	5.30%	5.68%	5.96%	5.69%	0.00%	6.17%
Sep 2023	5.02%	0.57%	5.66%	0.81%	6.40%	8.71%	5.81%	6.18%	6.84%	7.88%	5.00%	6.00%	6.20%	5.68%	0.00%	6.40%
Aug 2023	5.27%	0.58%	5.84%	0.78%	6.62%	9.37%	6.75%	6.04%	6.92%	8.43%	5.68%	6.03%	7.04%	5.29%	0.00%	6.62%
Jul 2023	4.69%	0.55%	5.24%	0.38%	5.62%	7.82%	5.25%	5.58%	5.52%	6.89%	5.27%	4.99%	5.55%	5.13%	2.98%	5.62%
Jun 2023	4.96%	0.56%	5.52%	0.30%	5.82%	7.72%	5.88%	5.29%	5.61%	7.71%	5.28%	5.06%	6.01%	5.27%	3.16%	5.82%
May 2023	4.97%	0.51%	5.48%	0.39%	5.87%	7.97%	5.64%	5.57%	5.71%	7.23%	5.18%	5.64%	5.86%	5.15%	0.00%	5.87%
Apr 2023	4.86%	0.54%	5.40%	0.45%	5.85%	7.82%	5.97%	5.50%	6.15%	7.22%	5.23%	5.43%	5.70%	5.01%	0.00%	5.85%
Mar 2023	4.87%	0.58%	5.45%	0.55%	6.00%	8.55%	5.23%	4.92%	5.62%	7.65%	6.11%	6.13%	5.80%	5.28%	0.00%	6.00%
Feb 2023	4.39%	0.53%	4.91%	0.45%	5.36%	8.14%	5.11%	5.01%	5.42%	7.48%	4.65%	4.87%	5.01%	4.50%	11.15%	5.36%
Jan 2023	5.10%	0.66%	5.77%	0.90%	6.67%	9.92%	6.34%	6.15%	6.60%	8.30%	5.63%	6.20%	7.51%	5.10%	11.94%	6.67%
2023	4.94%	0.59%	5.52%	0.55%	6.07%	8.69%	5.87%	5.57%	6.12%	7.43%	5.45%	5.56%	6.06%	5.29%	2.46%	6.07%
Dec 2022	5.37%	0.74%	6.11%	1.19%	7.30%	11.01%	6.50%	6.74%	7.15%	9.88%	6.82%	6.74%	7.09%	6.03%	0.00%	7.30%
Nov 2022	4.66%	0.56%	5.22%	0.73%	5.95%	8.32%	5.64%	5.36%	6.53%	7.89%	4.77%	5.65%	6.96%	4.37%	0.00%	5.95%
Oct 2022	4.92%	0.61%	5.52%	0.80%	6.33%	9.67%	5.90%	5.51%	7.08%	8.35%	5.84%	5.53%	6.90%	4.77%	0.00%	6.33%
Sep 2022	5.06%	0.60%	5.66%	0.71%	6.37%	9.19%	6.01%	4.95%	6.29%	8.29%	5.16%	6.33%	7.01%	5.18%	0.00%	6.37%
Aug 2022	4.98%	0.47%	5.45%	0.91%	6.36%	10.34%	6.20%	4.65%	6.50%	8.67%	4.40%	5.93%	7.24%	4.93%	2.21%	6.36%
Jul 2022	5.21%	0.47%	5.69%	2.02%	7.71%	10.59%	7.00%	7.06%	7.69%	9.80%	6.03%	7.30%	8.97%	6.11%	0.00%	7.71%
Jun 2022	4.73%	0.65%	5.38%	1.77%	7.15%	8.56%	7.86%	5.63%	7.66%	8.62%	7.26%	7.17%	7.74%	5.48%	0.73%	7.15%
May 2022	4.56%	0.61%	5.17%	1.05%	6.22%	8.08%	5.97%	5.37%	6.20%	7.88%	5.05%	6.27%	6.99%	5.14%	0.00%	6.22%
Apr 2022	4.79%	0.67%	5.46%	2.85%	8.31%	9.72%	7.79%	8.35%	10.71%	9.49%	6.61%	7.97%	8.71%	6.21%	0.00%	8.31%
Mar 2022	4.83%	0.70%	5.53%	4.45%	9.98%	13.34%	8.93%	8.45%	11.19%	11.57%	9.34%	9.99%	10.96%	7.75%	0.00%	9.98%
Feb 2022	4.18%	0.64%	4.83%	2.92%	7.75%	10.20%	7.00%	7.75%	8.41%	9.02%	7.99%	7.34%	8.07%	6.09%	0.00%	7.75%
Jan 2022	4.26%	0.64%	4.90%	5.09%	9.99%	11.55%	10.36%	9.58%	12.16%	12.28%	8.23%	8.44%	11.04%	7.99%	1.50%	9.99%
2022	4.79%	0.61%	5.41%	2.04%	7.44%	10.04%	7.04%	6.62%	8.13%	9.32%	6.45%	7.05%	8.16%	5.81%	0.37%	7.44%
Dec 2021	4.64%	0.67%	5.30%	2.77%	8.08%	10.17%	7.70%	7.69%	10.20%	9.23%	6.27%	8.38%	7.05%	6.53%	0.68%	8.08%
Nov 2021	4.87%	0.73%	5.61%	2.45%	8.05%	9.83%	6.71%	7.63%	10.32%	8.22%	6.75%	7.91%	7.98%	7.06%	0.00%	8.05%
Oct 2021	4.78%	0.55%	5.33%	1.29%	6.62%	8.71%	5.36%	6.37%	8.10%	6.68%	5.24%	6.58%	6.88%	5.90%	0.00%	6.62%
Sep 2021	4.62%	0.51%	5.14%	0.98%	6.12%	8.30%	4.60%	5.35%	6.89%	5.96%	6.28%	6.34%	6.85%	5.02%	1.91%	6.12%
Aug 2021	4.60%	0.38%	4.98%	0.88%	5.86%	8.92%	4.60%	4.80%	6.04%	6.41%	5.69%	6.18%	6.12%	4.88%	0.00%	5.86%
Jul 2021	4.53%	0.42%	4.94%	0.59%	5.54%	8.25%	4.40%	4.06%	5.35%	5.80%	6.10%	5.78%	6.33%	4.88%	0.00%	5.54%
Jun 2021	4.10%	0.51%	4.61%	0.54%	5.15%	7.13%	4.79%	4.47%	5.65%	5.26%	4.98%	5.06%	5.33%	4.49%	0.00%	5.15%
May 2021	3.87%	0.41%	4.28%	0.67%	4.96%	6.58%	4.59%	4.71%	5.48%	4.84%	4.34%	5.09%	5.04%	4.33%	0.00%	4.96%
Apr 2021	3.90%	0.38%	4.29%	0.84%	5.13%	6.16%	4.55%	3.91%	5.14%	5.29%	4.97%	5.85%	5.61%	4.63%	0.00%	5.13%
Mar 2021	3.96%	0.49%	4.46%	1.02%	5.48%	7.09%	6.17%	4.47%	5.44%	6.38%	4.50%	5.53%	5.93%	4.72%	0.00%	5.48%
Feb 2021	4.35%	0.55%	4.90%	1.99%	6.89%	8.50%	7.63%	5.86%	6.73%	8.99%	6.21%	6.62%	7.66%	5.56%	0.00%	6.89%
Jan 2021	4.57%	0.35%	4.92%	4.48%	9.40%	12.27%	9.04%	8.79%	10.05%	11.27%	8.93%	9.56%	8.72%	7.84%	0.00%	9.40%
2021	4.40%	0.50%	4.90%	1.55%	6.44%	8.49%	5.81%	5.69%	7.14%	7.01%	5.83%	6.58%	6.65%	5.48%	0.23%	6.44%

Total Absence Rate



Total Absence Rate



% of Absence Non Covid-19 / Covid-19

