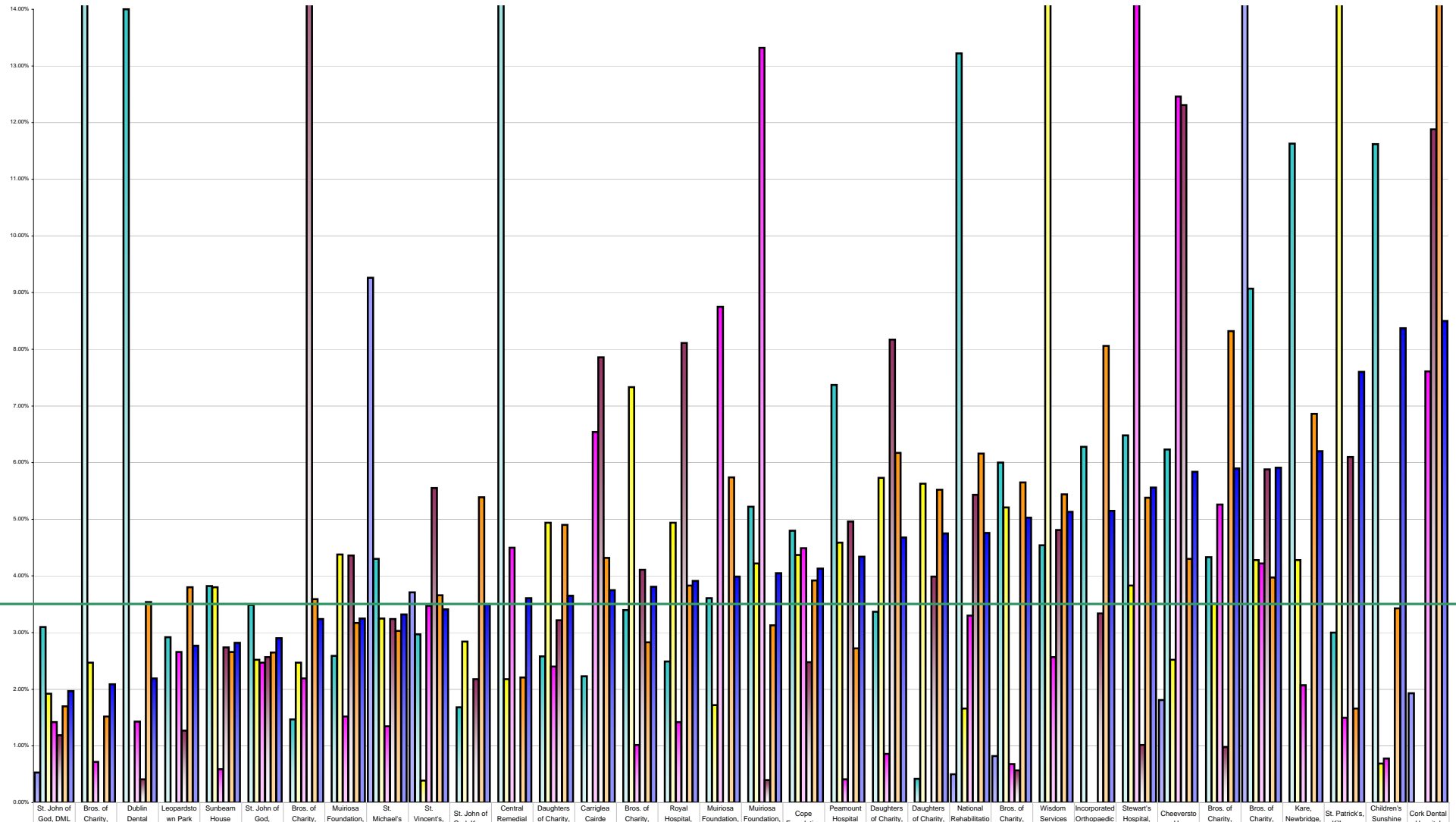


Voluntary Agency Absenteeism September 2013 Per Grade Category



Overall Target 3.5%

	St. John of God, DML Region	Bros. of Charity, Clare	Dublin Dental Hospital	Leopardstown Park Hospital	Sunbeam House Services	St. John of God, Drumcar	Bros. of Charity, Waterford	Muiriosa Foundation, South	St. Michael's House	St. Vincent's, Fairview	St. John of God, Kerry	Central Remedial Clinic	Daughters of Charity, Dublin	Carriglea Cairde Services	Bros. of Charity, Galway	Royal Hospital, Donnybrook	Muiriosa Foundation, Laois/Offaly	Muiriosa Foundation, Longford/W	Cope Foundation	Peamount Hospital (Newcastle)	Daughters of Charity, Limerick	Daughters of Charity, Roscrea	National Rehabilitation Hospital	Bros. of Charity, Southern	Wisdom Services (Cregg)	Incorporated Orthopaedic Hospital	Stewart's Hospital, Palmerstown	Cheeverstown House	Bros. of Charity, Roscommon	Bros. of Charity, Limerick	Kare, Newbridge, Co Kildare	St. Patrick's Kilkenny	Children's Sunshine Home	Cork Dental Hospital
■ % Absent Medical Dental	0.53%	0.00%	0.00%	0.00%	0.00%	0.00%	0.00%	0.00%	9.26%	3.71%	0.00%	0.00%	0.00%	0.00%	0.00%	0.00%	0.00%	0.00%	0.00%	0.00%	0.00%	0.00%	0.50%	0.82%	0.00%	0.00%	0.00%	1.81%	0.00%	33.33%	0.00%	0.00%	0.00%	1.93%
■ % Absent Nursing	3.10%	28.53%	14.00%	2.92%	3.82%	3.49%	1.47%	2.59%	4.30%	2.97%	1.68%	27.09%	2.58%	2.23%	3.40%	2.49%	3.61%	5.22%	4.80%	7.37%	3.37%	0.42%	13.22%	6.00%	4.54%	6.28%	6.48%	6.23%	4.33%	9.07%	11.63%	3.00%	11.62%	0.00%
■ % Absent Health & Social Care Professionals	1.92%	2.47%	0.00%	0.00%	3.80%	2.52%	2.47%	4.38%	3.25%	0.39%	2.84%	2.18%	4.94%	0.00%	7.33%	4.94%	1.72%	4.22%	4.37%	4.59%	5.73%	5.63%	1.66%	5.21%	18.69%	0.00%	3.83%	2.52%	3.51%	4.28%	4.28%	17.00%	0.69%	0.00%
■ % Absent Management Admin	1.42%	0.72%	1.43%	2.66%	0.59%	2.47%	2.19%	1.52%	1.35%	3.47%	0.00%	4.50%	2.40%	6.54%	1.02%	8.12%	13.32%	4.49%	0.41%	0.86%	0.00%	0.00%	3.30%	0.68%	2.57%	0.00%	14.11%	12.46%	5.26%	4.22%	2.07%	1.50%	0.78%	7.81%
■ % Absent General Support Staff	1.19%	0.00%	0.41%	1.27%	2.74%	2.57%	18.08%	4.36%	3.24%	5.55%	2.18%	0.00%	3.22%	7.86%	4.11%	8.11%	0.00%	0.40%	2.48%	4.96%	8.17%	3.99%	5.43%	0.57%	4.81%	3.34%	1.02%	12.31%	0.98%	5.88%	0.00%	6.10%	0.00%	11.88%
■ % Absent Other Patient & Client Care	1.70%	1.52%	3.54%	3.80%	2.66%	2.65%	3.59%	3.17%	3.03%	3.66%	5.39%	2.21%	4.90%	4.32%	2.83%	3.83%	5.74%	3.13%	3.92%	2.72%	6.17%	5.52%	6.16%	5.65%	5.44%	8.06%	5.38%	4.30%	8.32%	3.97%	6.86%	1.66%	3.43%	17.02%
■ % Absent	1.97%	2.09%	2.19%	2.77%	2.82%	2.90%	3.24%	3.25%	3.32%	3.41%	3.50%	3.61%	3.65%	3.75%	3.81%	3.91%	3.99%	4.05%	4.13%	4.34%	4.68%	4.75%	4.76%	5.03%	5.13%	5.15%	5.56%	5.84%	5.90%	5.91%	6.20%	7.60%	8.37%	8.50%