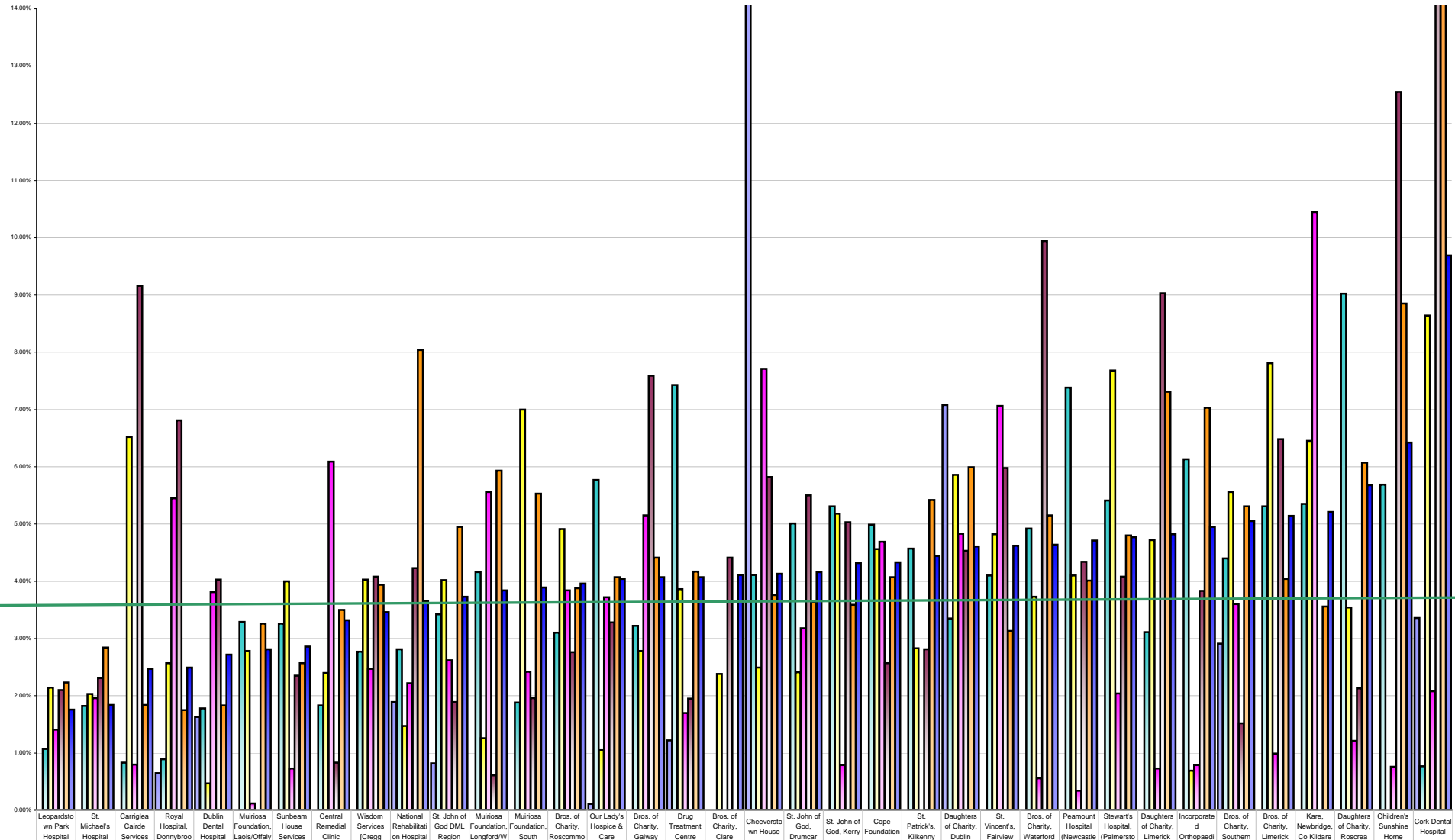


Voluntary Agencies Absenteeism September 2012 Per Grade Category



Overall Target 3.5%

	Leopardstown Park Hospital	St. Michael's Hospital	Carriglea Cairde Services	Royal Hospital, Donnybrook	Dublin Dental Hospital	Muiriosa Foundation, Laois/Offaly	Sunbeam House Services	Central Remedial Clinic	Wisdom Services (Cregg)	National Rehabilitation Hospital	St. John of God DML Region	Muiriosa Foundation, Longford/W	Muiriosa Foundation, South	Bros. of Charity, Roscommo	Our Lady's Hospice & Care	Bros. of Charity, Galway	Drug Treatment Centre	Bros. of Charity, Clare	Cheeverstown House	St. John of God, Drumcar	St. John of God, Kerry	Cope Foundation	St. Patrick's, Kilkenny	Daughters of Charity, Dublin	St. Vincent's, Fairview	Bros. of Charity, Waterford	Peamount Hospital (Newcastle)	Stewart's Hospital, (Palmerston)	Daughters of Charity, Limerick	Incorporated Orthopaedic	Bros. of Charity, Southern	Bros. of Charity, Limerick	Kare, Newbridge, Co Kildare	Daughters of Charity, Roscrea	Children's Sunshine Home	Cork Dental Hospital
■ % Absent Medical Dental	0.00%	0.00%	0.00%	0.65%	1.63%			0.00%		1.89%	0.82%				0.11%	0.00%	1.22%		24.11%	0.00%		0.00%	0.00%	7.08%	0.00%	0.00%	0.00%	0.00%	0.00%	0.00%	0.00%	2.91%	0.00%		0.00%	3.36%
■ % Absent Nursing	1.07%	1.82%	0.83%	0.89%	1.78%	3.29%	3.26%	1.83%	2.77%	2.81%	3.42%	4.16%	1.88%	3.10%	5.77%	3.22%	7.43%	0.00%	4.11%	5.01%	5.31%	4.99%	4.57%	3.35%	4.10%	4.92%	7.38%	5.41%	4.11%	6.13%	4.40%	5.31%	5.35%	9.02%	5.69%	0.77%
■ % Absent Health & Social Care Professionals	2.14%	2.03%	6.52%	2.57%	0.47%	2.78%	4.00%	2.40%	4.03%	1.47%	4.02%	1.26%	7.00%	4.91%	1.05%	2.78%	3.86%	2.38%	2.49%	2.41%	5.18%	4.56%	2.83%	5.86%	4.82%	3.73%	4.10%	7.68%	4.72%	0.69%	5.56%	7.81%	6.45%	3.54%	0.00%	8.64%
■ % Absent Management Admin	1.41%	1.96%	0.80%	5.45%	3.81%	0.12%	0.73%	6.09%	2.47%	2.22%	2.62%	5.56%	2.42%	3.84%	3.72%	5.15%	1.70%	0.00%	7.71%	3.18%	0.79%	4.69%	0.00%	4.83%	7.06%	0.56%	0.34%	2.04%	0.73%	0.79%	3.60%	0.99%	10.45%	1.21%	0.76%	2.08%
■ % Absent General Support Staff	2.10%	2.31%	9.16%	6.81%	4.03%	0.00%	2.35%	0.83%	4.08%	4.23%	1.89%	0.61%	1.96%	2.76%	3.28%	7.59%	1.95%	4.41%	5.82%	5.50%	5.03%	2.57%	2.81%	4.53%	5.98%	9.94%	4.34%	4.08%	9.03%	3.83%	1.52%	6.48%	0.00%	2.13%	12.55%	24.90%
■ % Absent Other Patient & Client Care	2.23%	2.84%	1.84%	1.75%	1.83%	3.26%	2.57%	3.50%	3.94%	8.04%	4.95%	5.93%	5.53%	3.88%	4.07%	4.41%	4.17%	0.00%	3.76%	3.64%	3.59%	4.07%	5.42%	5.99%	3.13%	5.15%	4.01%	4.80%	7.31%	7.03%	5.31%	4.04%	3.56%	6.07%	8.85%	18.15%
■ % Absent	1.76%	1.84%	2.47%	2.49%	2.72%	2.81%	2.86%	3.32%	3.46%	3.65%	3.73%	3.84%	3.89%	3.96%	4.04%	4.07%	4.07%	4.11%	4.13%	4.16%	4.32%	4.33%	4.44%	4.61%	4.62%	4.64%	4.71%	4.77%	4.82%	4.95%	5.05%	5.14%	5.21%	5.68%	6.42%	9.69%