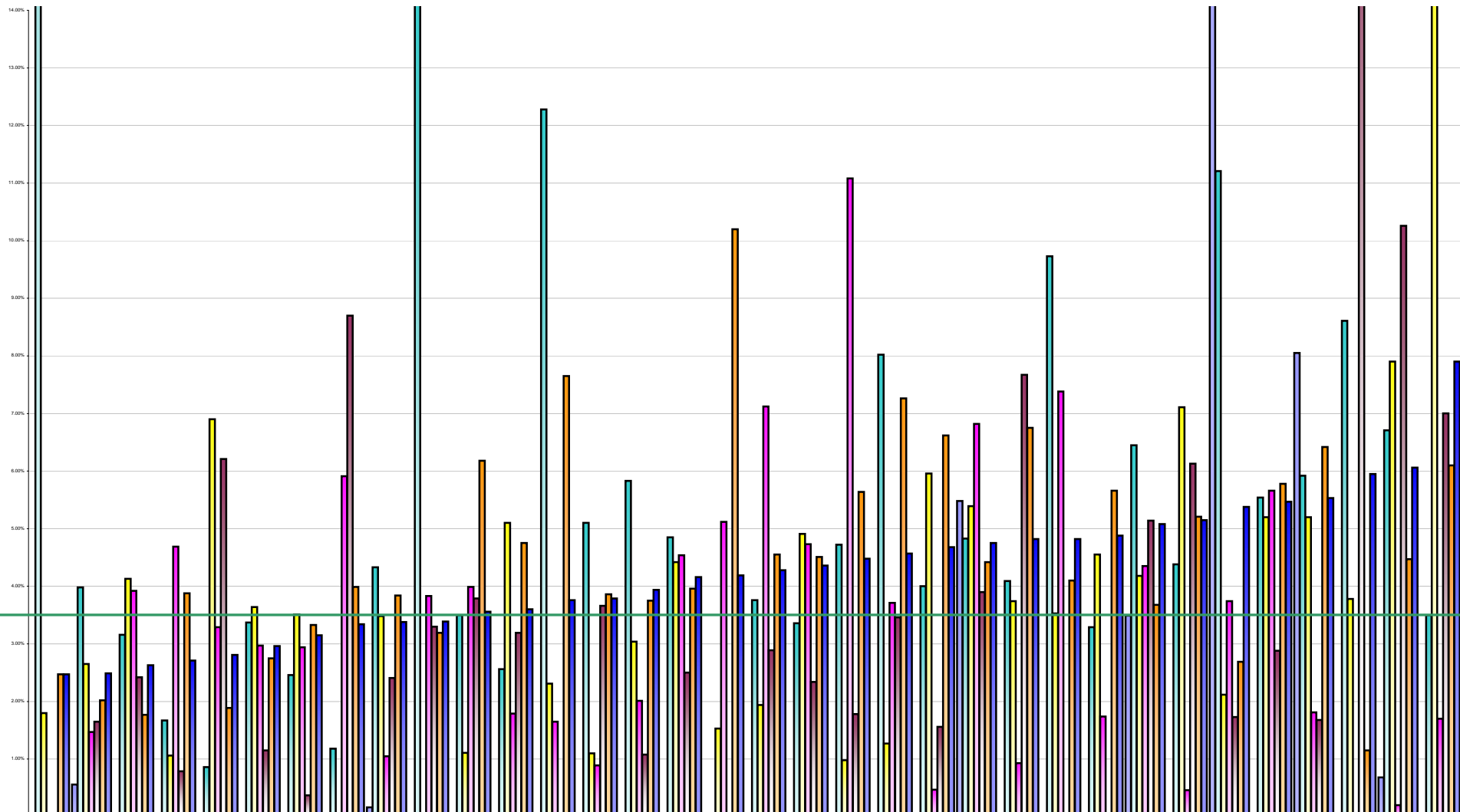


Voluntary Agency Absenteeism October 2013 Per Grade Category

Overall Target 3.5%



	Bros. of Charity, Clare	St. John of God, DML	Leopardstown Park Hospital	Bros. of Charity, Roscommo	Royal Hospital, Donnybrook	Sunbeam House Services	Bros. of Charity, Waterford	Carriglea Cairde Services	St. Michael's House	Dublin Dental Hospital	St. Vincent's, Fairview	Daughters of Charity, Dublin	Central Remedial Clinic	St. John of God, Kerry	St. John of God, Drumcar	Cope Foundation	Cork Dental Hospital	Stewart's Hospital, Palmerstown	Muiriosa Foundation, Longford/W	Incorporated Orthopaedic Hospital	National Rehabilitation Hospital	Muiriosa Foundation, South	Cheeverstown House	Daughters of Charity, Limerick	Kare, Newbridge, Co Kildare	Daughters of Charity, Roscrea	Our Lady's Hospice & Care	Bros. of Charity, Galway	Bros. of Charity, Limerick	Muiriosa Foundation, Lasis/O'flay	Bros. of Charity, Southern	Children's Sunshine Home	Peamount Hospital (Newcastle)	St. Patrick's, Kilkenny	
■ % Absent Medical Dental	0.00%	0.56%	0.00%	0.00%	0.00%	0.00%	0.00%	0.00%	0.16%	0.00%	0.00%	0.00%	0.00%	0.00%	0.00%	0.00%	0.00%	0.00%	0.00%	0.00%	0.00%	0.00%	0.00%	0.00%	0.00%	0.00%	0.00%	0.00%	0.00%	0.00%	0.00%	0.00%	0.00%	0.00%	0.00%
■ % Absent Nursing	29.27%	3.98%	3.16%	1.67%	0.86%	3.37%	2.46%	1.18%	4.33%	14.67%	3.50%	2.56%	12.28%	5.10%	5.83%	4.85%	0.00%	3.76%	3.36%	4.72%	8.02%	4.00%	4.83%	4.09%	9.73%	3.29%	6.45%	4.38%	11.21%	5.54%	5.92%	8.61%	6.71%	3.50%	
■ % Absent Health & Social Care Professionals	1.80%	2.65%	4.13%	1.06%	6.90%	3.64%	3.51%	0.00%	3.48%	0.00%	1.11%	5.10%	2.31%	1.10%	3.04%	4.42%	1.53%	1.94%	4.91%	0.98%	1.27%	5.96%	5.39%	3.74%	3.53%	4.55%	4.18%	7.11%	2.12%	5.20%	5.20%	3.78%	7.90%	16.50%	
■ % Absent Management Admin	0.00%	1.47%	3.92%	4.69%	3.29%	2.97%	2.94%	5.91%	1.05%	3.83%	3.99%	1.79%	1.65%	0.89%	2.01%	4.54%	5.12%	7.12%	4.73%	11.08%	3.71%	0.47%	6.82%	0.93%	7.38%	1.74%	4.35%	0.46%	3.74%	1.81%	0.00%	0.20%	1.70%		
■ % Absent General Support Staff	0.00%	1.65%	2.42%	0.79%	6.21%	1.15%	0.37%	8.70%	2.41%	3.30%	3.79%	3.19%	0.00%	3.66%	1.08%	2.50%	0.00%	2.89%	2.34%	1.78%	3.46%	1.56%	3.90%	7.67%	0.00%	5.14%	6.13%	1.73%	2.88%	1.68%	17.80%	10.26%	7.00%		
■ % Absent Other Patient & Client Care	2.47%	2.02%	1.77%	3.88%	1.89%	2.75%	3.33%	3.99%	3.84%	3.19%	6.18%	4.75%	7.65%	3.86%	3.75%	3.96%	10.20%	4.55%	4.51%	5.64%	7.26%	6.62%	4.42%	6.75%	4.10%	5.66%	3.68%	5.21%	2.69%	5.78%	6.42%	1.15%	4.47%	6.10%	
■ % Absent	2.47%	2.49%	2.63%	2.71%	2.81%	2.96%	3.15%	3.34%	3.38%	3.39%	3.56%	3.60%	3.76%	3.79%	3.94%	4.16%	4.19%	4.28%	4.36%	4.48%	4.57%	4.68%	4.75%	4.82%	4.82%	4.88%	5.08%	5.15%	5.38%	5.47%	5.53%	5.95%	6.06%	7.90%	