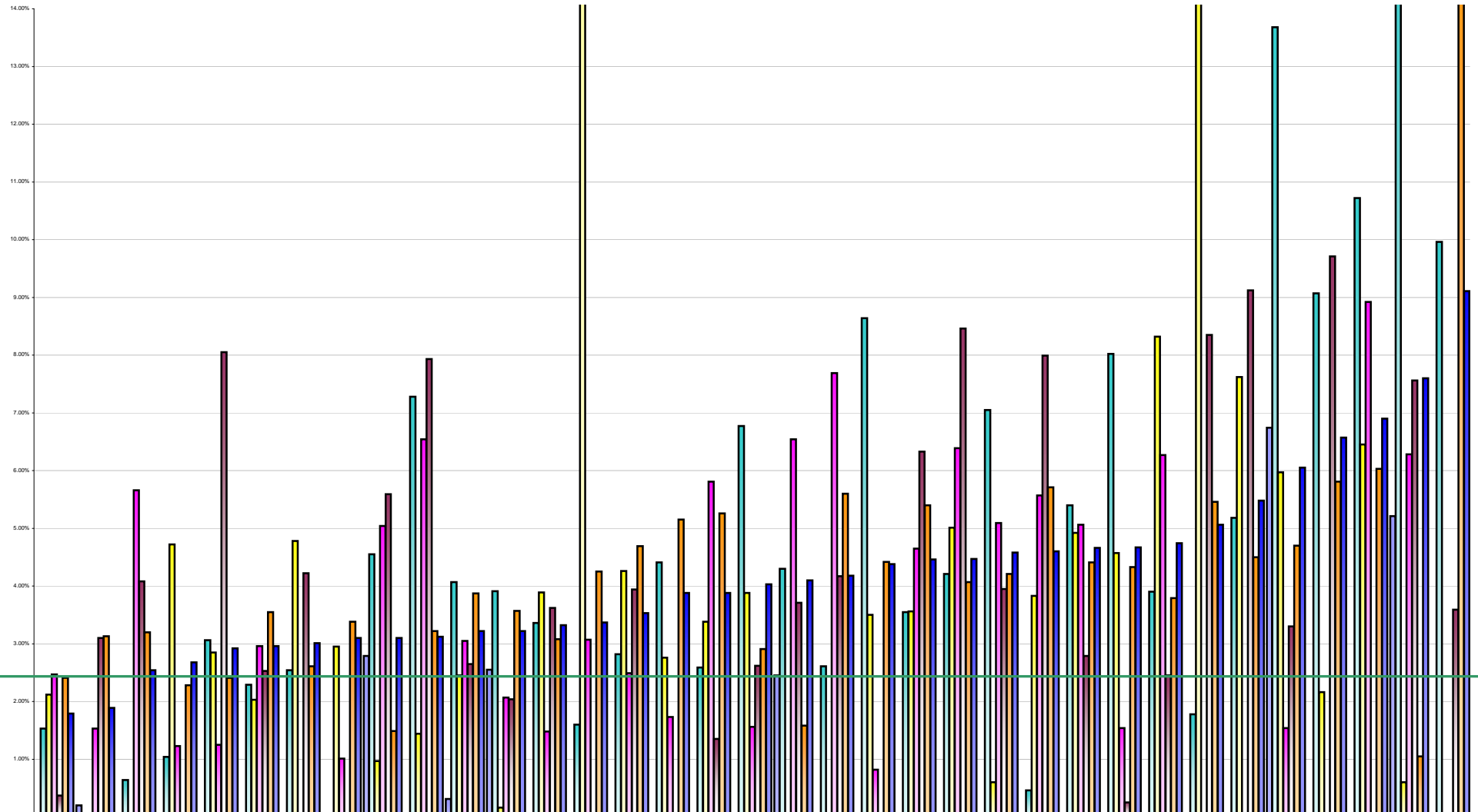


Voluntary Agency Absenteeism May 2013 Per Grade Category



Overall Target 3.5%

	Royal Hospital, Donnybrook	Dublin Dental Hospital	Leopardstown Park Hospital	Muiriosa Foundation, Laois/Offaly	Sunbeam House Services	Carriglea Cairde Services	Daughters of Charity, Dublin	Bros. of Charity, Clare	National Rehabilitation on Hospital	Central Remedial Clinic	St. John of God (DS) DML	Stewart's Hospital, (Palmerston)	St. Michael's House,	Cork Dental Hospital	Daughters of Charity, Limenick	Bros. of Charity, Limenick	Muiriosa Foundation, South	Our Lady's Hospice & Care	St. Vincent's, Fairview	Wisdom Services (Cregg)	Daughters of Charity, Roscrea	Cheeverstown House	Bros. of Charity, Waterford	Incorporated Orthopaedic	Muiriosa Foundation, Longford/W	Cope Foundation	Bros. of Charity, Roscommo	Bros. of Charity, Galway	St. Patrick's, Kilkenny	St. John of God, Kerry	Bros. of Charity, Southern	Peamount Hospital (Newcastle)	Kare, Newbridge, Co Kildare	St. John of God, Drumcar	Children's Sunshine Home	
■ % Absent Medical Dental	0.00%	0.20%	0.00%			0.00%	0.00%		2.79%	0.00%	0.31%	2.55%	0.00%	0.00%	0.00%		0.00%	2.45%		0.00%	0.00%	0.00%	0.00%	0.00%	0.46%	0.00%	0.00%	0.00%	0.00%	0.00%	0.00%	0.00%	6.74%	0.00%	5.21%	0.00%
■ % Absent Nursing	1.53%	0.00%	0.64%	1.04%	3.06%	2.29%	2.54%	0.00%	4.55%	7.28%	4.07%	3.91%	3.36%	1.60%	2.82%	4.41%	2.59%	6.77%	4.30%	2.61%	8.64%	3.55%	4.21%	7.05%	0.46%	5.40%	8.02%	3.90%	1.78%	5.18%	13.68%	9.07%	10.72%	15.79%	9.96%	
■ % Absent Health & Social Care Professionals	2.12%	0.00%	0.00%	4.72%	2.85%	2.03%	4.78%	2.95%	0.97%	1.44%	2.45%	0.16%	3.89%	33.33%	4.26%	2.76%	3.38%	3.88%	0.00%	0.00%	3.50%	3.56%	5.01%	0.60%	3.83%	4.92%	4.57%	8.32%	16.17%	7.62%	5.97%	2.16%	6.45%	0.60%	0.00%	
■ % Absent Management Admin	2.47%	1.53%	5.66%	1.23%	1.25%	2.96%	0.00%	1.01%	5.04%	6.54%	3.05%	2.07%	1.48%	3.07%	2.49%	1.73%	5.81%	1.56%	6.54%	7.69%	0.82%	4.65%	6.39%	5.09%	5.57%	5.06%	1.54%	6.27%	0.00%	0.00%	1.54%	0.00%	0.00%	8.92%	6.28%	0.00%
■ % Absent General Support Staff	0.37%	3.10%	4.08%	0.00%	8.05%	2.53%	4.22%	0.00%	5.59%	7.93%	2.65%	2.04%	3.62%	0.00%	3.94%	0.00%	1.35%	2.62%	3.71%	4.17%	0.00%	6.33%	8.46%	3.95%	7.99%	2.79%	0.25%	2.45%	8.35%	9.12%	3.30%	9.71%	7.56%	3.59%		
■ % Absent Other Patient & Client Care	2.41%	3.13%	3.20%	2.28%	2.41%	3.55%	2.61%	3.38%	1.49%	3.22%	3.87%	3.57%	3.08%	4.25%	4.69%	5.15%	5.26%	2.91%	1.58%	5.60%	4.42%	5.40%	4.07%	4.21%	5.71%	4.41%	4.33%	3.79%	5.46%	4.50%	4.70%	5.81%	6.03%	1.05%	14.87%	
■ % Absent	1.79%	1.89%	2.54%	2.68%	2.92%	2.96%	3.01%	3.10%	3.10%	3.12%	3.22%	3.22%	3.32%	3.37%	3.53%	3.88%	3.88%	4.03%	4.10%	4.18%	4.38%	4.46%	4.47%	4.58%	4.60%	4.66%	4.67%	4.74%	5.06%	5.48%	6.05%	6.57%	6.90%	7.60%	9.11%	