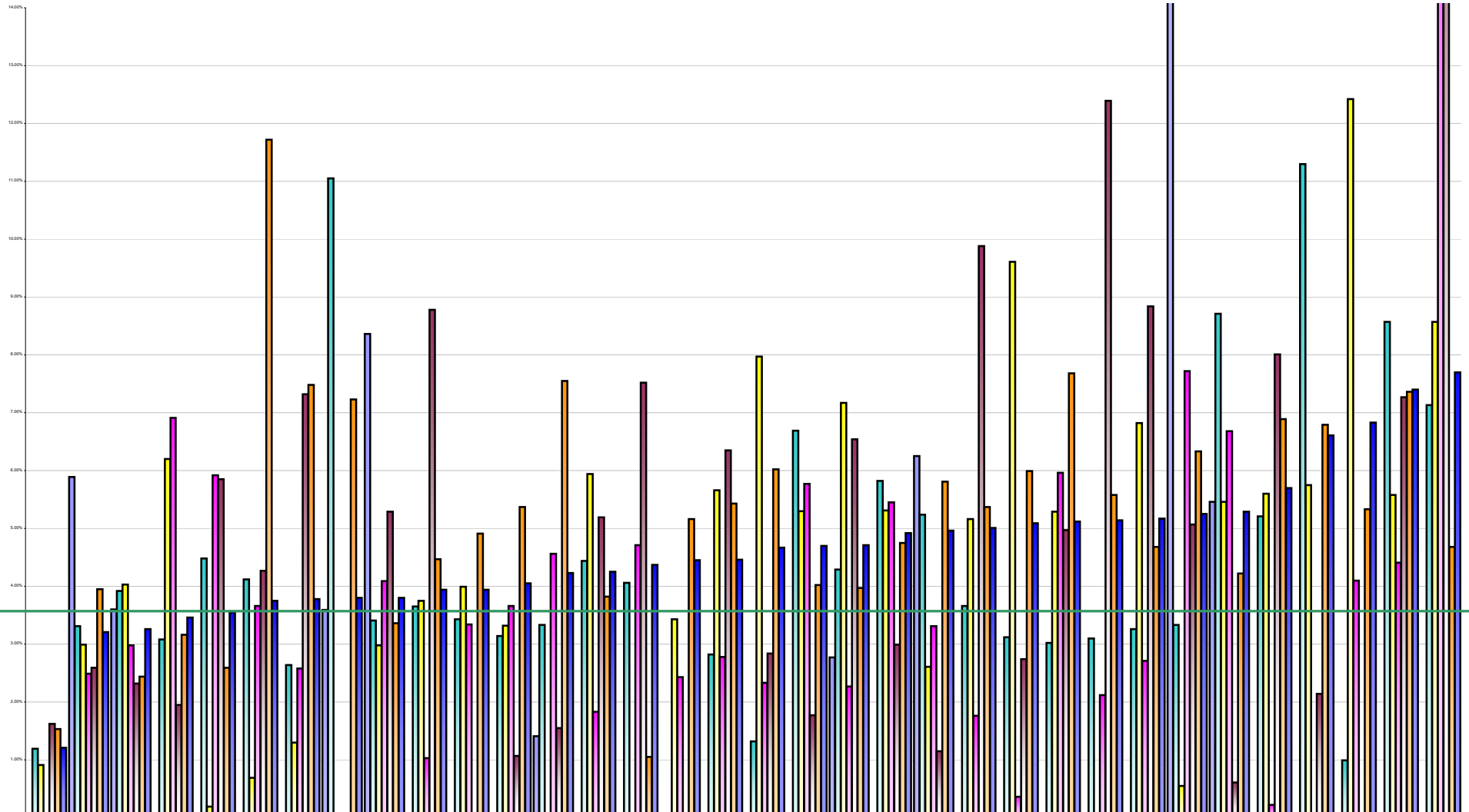


Voluntary Agency Absenteeism March 2014 Per Grade Category

Overall Target 3.5%



	Children's Sunshine Home	St. Michael's House	St. John of God DML Region	St. John of God, Kerry	Royal Hospital, Donnybrook	St. Michael's Hospital	Muiriosa Foundation, Lais/O'Flaherty	Cork Dental Hospital	National Rehabilitation Hospital	Bros. of Charity, Limerick	Central Remedial Clinic	Sunbeam House Services	Dublin Dental Hospital	Peamount Hospital (Newcastle)	St. Vincent's, Fairview	Bros. of Charity, Clare	Daughters of Charity, Dublin	Muiriosa Foundation, South	Muiriosa Foundation, Longford/W	Bros. of Charity, Galway	Cope Foundation	Bros. of Charity, Waterford	St. John of God, Drumcar	Carriglea Cairde Services	Cheeverstown House	Leopardstown Park Hospital	Bros. of Charity, Roscommon	Incorporated Orthopaedic Hospital	Bros. of Charity, Southern	Daughters of Charity, Limerick	Daughters of Charity, Roscrea	Kare, Newbridge, Co Kildare	Stewart's Hospital, (Palmerston)	St. Patrick's, Kilkenny	
% Absent Medical Dental	0.00%	5.89%	3.60%	0.00%	0.00%	0.00%	0.00%	3.59%	8.36%	0.00%	0.00%	0.00%	1.41%	0.00%	0.00%	0.00%	0.00%	0.00%	0.00%	2.77%	0.00%	6.25%	0.00%	0.00%	0.00%	0.00%	84.75%	5.46%	0.00%	0.00%	0.00%	0.00%	0.00%	0.00%	0.00%
% Absent Nursing	1.19%	3.31%	3.92%	3.08%	4.48%	4.12%	2.64%	11.05%	3.41%	3.65%	3.43%	3.14%	3.33%	4.44%	4.06%	0.00%	2.82%	1.32%	6.69%	4.29%	5.82%	5.24%	3.66%	3.12%	3.02%	3.10%	3.26%	3.33%	8.71%	5.21%	11.30%	0.99%	8.57%	7.13%	
% Absent Health & Social Care Professionals	0.91%	2.99%	4.03%	6.20%	0.19%	0.69%	1.30%	0.00%	2.98%	3.75%	3.99%	3.32%	0.00%	5.94%	0.00%	3.43%	5.66%	7.97%	5.30%	7.17%	5.31%	2.61%	5.16%	9.61%	5.29%	0.00%	6.82%	0.55%	5.46%	5.60%	5.75%	12.42%	5.58%	8.57%	
% Absent Management Admin	0.00%	2.49%	2.98%	6.91%	5.92%	3.66%	2.58%	0.04%	4.09%	1.03%	3.34%	3.66%	4.56%	1.83%	4.71%	2.43%	2.78%	2.33%	5.77%	2.27%	5.45%	3.31%	1.76%	0.36%	5.96%	2.12%	2.71%	7.72%	6.68%	0.22%	0.00%	4.10%	4.41%	22.71%	
% Absent General Support Staff	1.62%	2.59%	2.32%	1.95%	5.85%	4.27%	7.32%	0.00%	5.29%	8.78%	0.00%	1.07%	1.55%	5.19%	7.52%	0.00%	6.35%	2.84%	1.77%	6.54%	2.99%	1.15%	9.88%	2.74%	4.97%	12.39%	8.84%	5.07%	0.61%	8.01%	2.14%	0.00%	7.27%	22.34%	
% Absent Other Patient & Client Care	1.53%	3.95%	2.44%	3.16%	2.59%	11.72%	7.48%	7.23%	3.36%	4.47%	4.91%	5.37%	7.55%	3.82%	1.05%	5.16%	5.43%	6.02%	4.02%	3.97%	4.75%	5.81%	5.37%	5.99%	7.68%	5.58%	4.68%	6.33%	4.22%	6.89%	6.79%	5.33%	7.36%	4.68%	
% Absent	1.21%	3.21%	3.26%	3.46%	3.55%	3.75%	3.78%	3.80%	3.80%	3.94%	3.94%	4.05%	4.23%	4.25%	4.37%	4.45%	4.46%	4.67%	4.70%	4.71%	4.92%	4.96%	5.01%	5.09%	5.12%	5.14%	5.17%	5.25%	5.29%	5.70%	6.61%	6.83%	7.40%	7.70%	