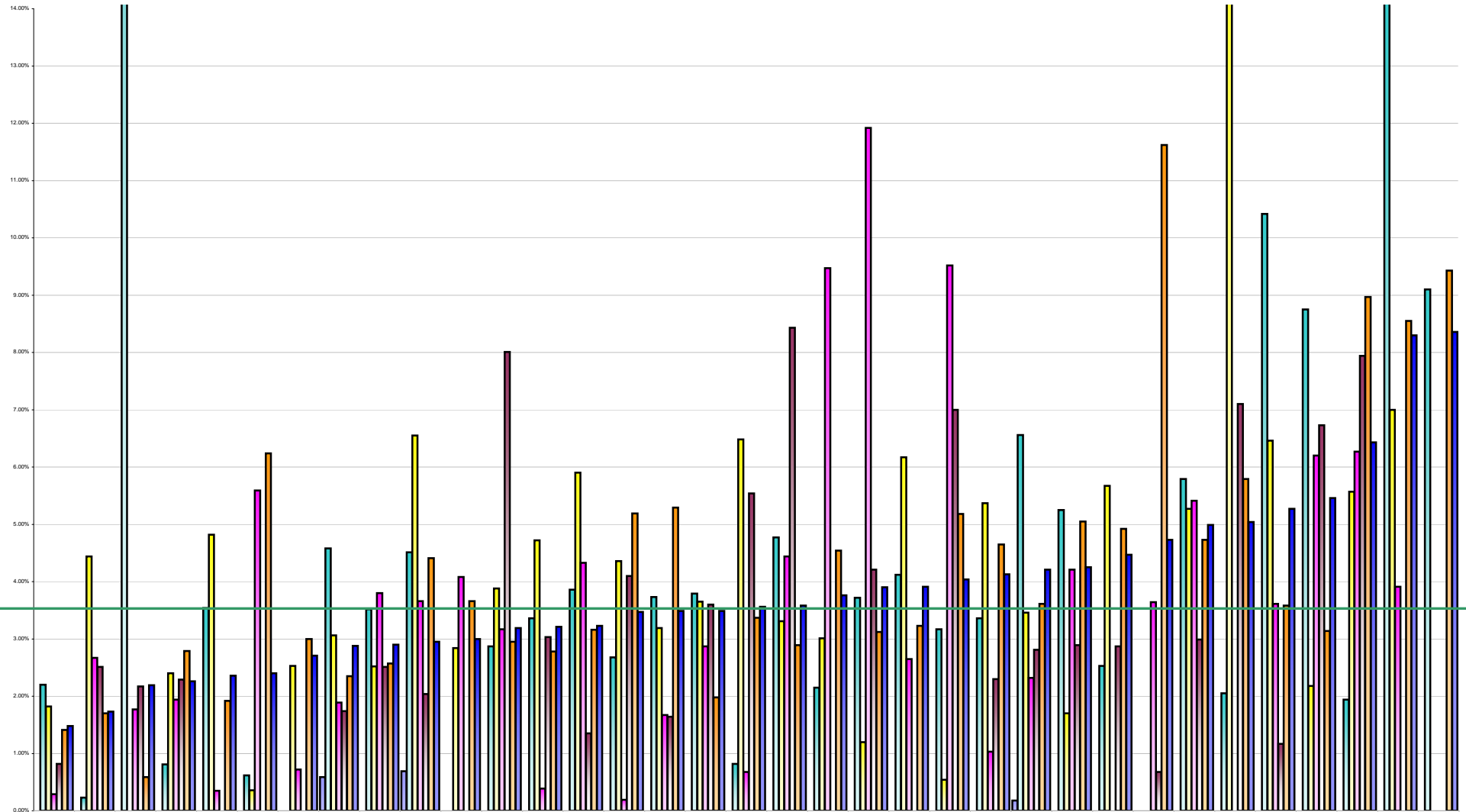


Voluntary Agency Absenteeism July 2013 Per Grade Category



Overall Target 3.5%

	Leopardstown Park Hospital	Royal Hospital, Domybrook	Dublin Dental Hospital	Sunbeam House Services	Carriglea Cairde Services	Muiriosa Foundation, Longford/W	Bros. of Charity, Clare	St. John of God, DML	St. John of God, Drumcar	National Rehabilitation Hospital	Central Remedial Clinic	Bros. of Charity, Waterford	Daughters of Charity, Dublin	Stewart's Hospital, (Palmerston)	Daughters of Charity, Limerick	St. Michael's House	St. Vincent's, Fairview	Muiriosa Foundation, South	Bros. of Charity, Roscommon	Muiriosa Foundation, Laois/Offaly	Wisdom Services (Cregg)	Bros. of Charity, Limerick	Cheeverstown House	Bros. of Charity, Galway	Our Lady's Hospice & Care	Peamount Hospital (Newcastle)	Daughters of Charity, Roscrea	Cork Dental Hospital	Cope Foundation	St. Patrick's, Kilkenny	Bros. of Charity, Southern	Incorporated Orthopaed	St. John of God, Kerry	Kare, Newbridge, Co Kildare	Children's Sunshine Home	
■ % Absent Medical Dental	0.00%	0.00%	0.00%	0.00%	0.00%	0.00%	0.00%	0.59%	0.00%	0.69%	0.00%	0.00%	0.00%	0.00%	0.00%	0.00%	0.00%	0.00%	0.00%	0.00%	0.00%	0.00%	0.00%	0.18%	0.00%	0.00%	0.00%	0.00%	0.00%	0.00%	0.00%	0.00%	0.00%	0.00%	0.00%	0.00%
■ % Absent Nursing	2.20%	0.23%	22.67%	0.81%	3.54%	0.62%	0.00%	4.58%	3.52%	4.51%	0.00%	2.87%	3.36%	3.86%	2.68%	3.73%	3.79%	0.82%	4.77%	2.15%	3.72%	4.12%	3.17%	3.36%	6.56%	5.25%	2.53%	0.00%	5.79%	2.05%	10.42%	8.75%	1.94%	14.16%	9.10%	
■ % Absent Health & Social Care Professionals	1.82%	4.44%	0.00%	2.40%	4.82%	0.36%	2.53%	3.06%	2.52%	6.55%	2.84%	3.88%	4.72%	5.90%	4.36%	3.19%	3.65%	6.48%	3.31%	3.01%	1.20%	6.17%	0.54%	5.37%	3.46%	1.70%	5.67%	0.00%	5.27%	16.10%	6.46%	2.18%	5.57%	7.00%	0.00%	
■ % Absent Management Admin	0.29%	2.67%	1.77%	1.94%	0.35%	5.59%	0.72%	1.89%	3.80%	3.66%	4.08%	3.17%	0.39%	4.33%	0.19%	1.67%	2.87%	0.68%	4.44%	9.47%	11.92%	2.65%	9.52%	1.03%	2.32%	4.21%	0.00%	3.64%	5.41%	0.00%	3.61%	6.20%	6.27%	3.91%	0.00%	
■ % Absent General Support Staff	0.82%	2.51%	2.17%	2.29%	0.00%	0.00%	0.00%	1.74%	2.51%	2.04%	0.00%	8.01%	3.03%	1.35%	4.10%	1.64%	3.60%	5.54%	8.43%	0.00%	4.21%	0.00%	7.00%	2.30%	2.81%	2.89%	2.87%	0.68%	2.99%	7.10%	1.17%	6.73%	7.94%	0.00%	0.00%	
■ % Absent Other Patient & Client Care	1.41%	1.70%	0.59%	2.79%	1.92%	6.24%	3.00%	2.35%	2.57%	4.41%	3.66%	2.95%	2.78%	3.16%	5.19%	5.29%	1.98%	3.37%	2.89%	4.54%	3.12%	3.23%	5.18%	4.65%	3.61%	5.05%	4.92%	11.62%	4.73%	5.79%	3.58%	3.14%	8.97%	8.55%	9.43%	
■ % Absent	1.48%	1.73%	2.19%	2.26%	2.36%	2.40%	2.71%	2.88%	2.90%	2.95%	3.00%	3.19%	3.21%	3.23%	3.47%	3.49%	3.49%	3.56%	3.58%	3.76%	3.90%	3.91%	4.04%	4.13%	4.21%	4.25%	4.47%	4.73%	4.99%	5.04%	5.27%	5.46%	6.43%	8.30%	8.36%	