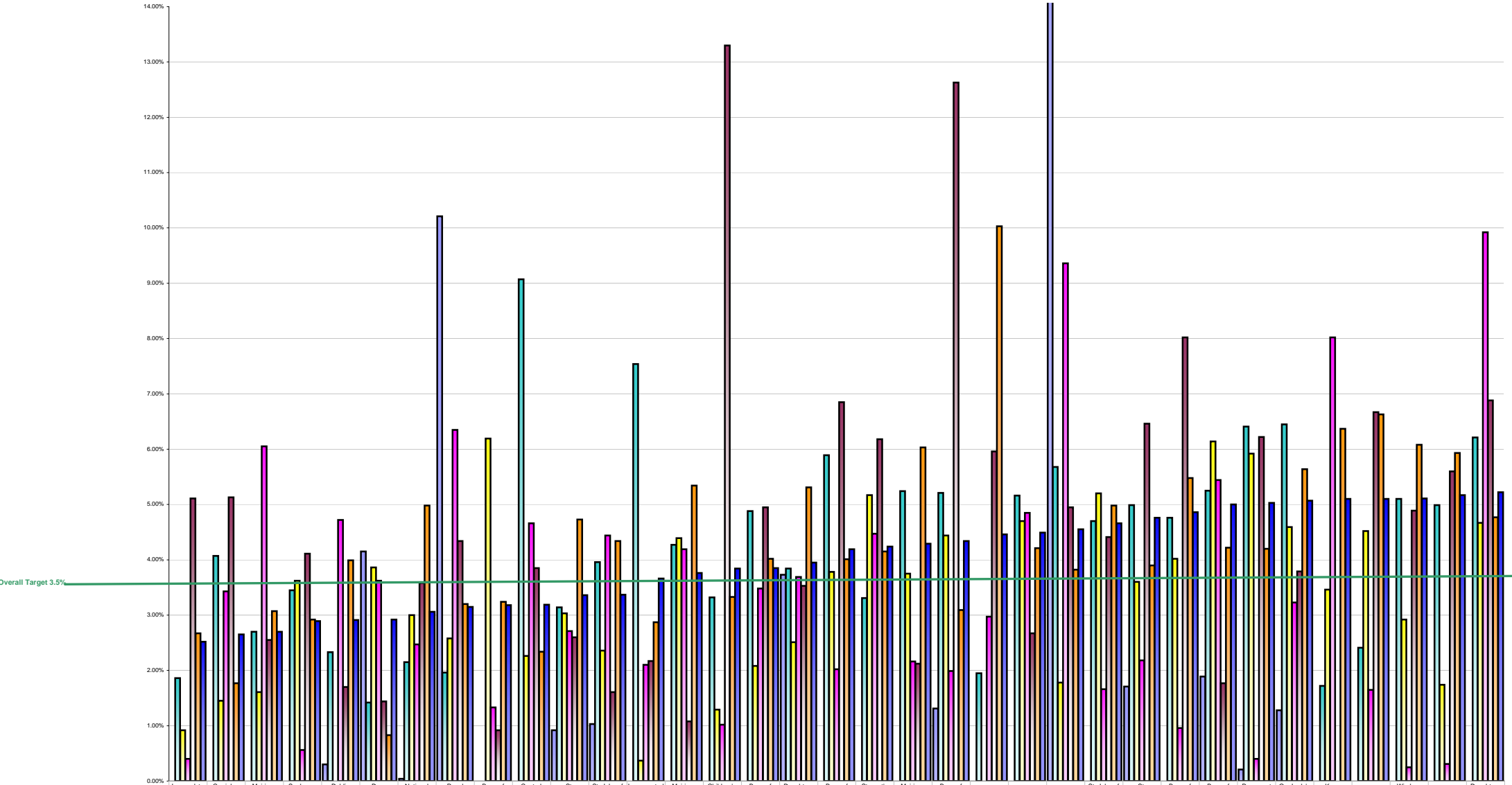


Voluntary Agency Absenteeism December 2012 Per Grade Category



	Leopardstown Park Hospital	Carriglea Cairde Services	Muiriosa Foundation, Longford/W	Sunbeam House Services	Dublin Dental Hospital	Drug Treatment Centre	National Rehabilitation Hospital	Royal Hospital, Donnybrook	Bros. of Charity, Clare	Central Remedial Clinic	St. Michael's House	St. John of God DML Region	Incorporated Orthopaedic Hospital	Muiriosa Foundation, South	Children's Sunshine Home	Bros. of Charity, Galway	Daughters of Charity, Dublin	Bros. of Charity, Roscommon	Stewart's Hospital, (Palmerston)	Muiriosa Foundation, Laois/Offaly	Bros. of Charity, Limerick	Cork Dental Hospital	Cope Foundation	Cheerstown House	St. John of God, Drumcar	St. Vincent's, Fairview	Bros. of Charity, Waterford	Bros. of Charity, Southern	Pearmount Hospital (Newcastle)	Our Lady's Hospice & Care	Kare, Newbridge, Co Kildare	St. John of God, Kerry	Wisdom Services (Cregg)	St. Patrick's, Kilkenny	Daughters of Charity, Roscrea	
■ % Absent Medical Dental	0.00%	0.00%			0.30%	4.15%	0.04%	10.21%		0.00%	0.92%	1.03%	0.00%		0.00%	0.00%	3.73%		0.00%		1.31%	0.00%		24.11%	0.00%	1.71%	0.00%	1.89%	0.21%	1.28%			2.41%		0.00%	
■ % Absent Nursing	1.86%	4.07%	2.70%	3.45%	2.33%	1.42%	2.15%	1.96%	0.00%	9.07%	3.14%	3.96%	7.54%	4.27%	3.32%	4.88%	3.84%	5.89%	3.31%	5.24%	5.21%	1.95%	5.16%	5.68%	4.70%	4.99%	4.76%	5.25%	6.41%	6.45%	1.72%	2.41%	5.10%	4.99%	6.21%	
■ % Absent Health & Social Care Professionals	0.92%	1.45%	1.61%	3.62%	0.00%	3.86%	3.00%	2.58%	6.19%	2.26%	3.03%	2.36%	0.37%	4.39%	1.29%	2.08%	2.51%	3.78%	5.17%	3.75%	4.44%	0.00%	4.70%	1.78%	5.20%	3.60%	4.02%	6.14%	5.92%	4.59%	3.46%	4.52%	2.92%	1.74%	4.67%	
■ % Absent Management Admin	0.40%	3.43%	6.05%	0.56%	4.72%	3.62%	2.47%	6.35%	1.33%	4.66%	2.71%	4.44%	2.10%	4.19%	1.02%	3.48%	3.69%	2.02%	4.47%	2.16%	1.99%	2.97%	4.85%	9.36%	1.66%	2.18%	0.96%	5.44%	0.40%	3.23%	8.02%	1.65%	0.25%	0.31%	9.92%	
■ % Absent General Support Staff	5.11%	5.13%	2.55%	4.11%	1.70%	1.44%	3.58%	4.34%	0.92%	3.85%	2.60%	1.61%	2.17%	1.08%	13.30%	4.95%	3.53%	6.85%	6.18%	2.12%	12.63%	5.96%	2.67%	4.95%	4.41%	6.46%	8.02%	1.77%	6.22%	3.79%	0.00%	6.67%	4.89%	5.60%	6.88%	
■ % Absent Other Patient & Client Care	2.67%	1.77%	3.07%	2.92%	3.99%	0.83%	4.98%	3.20%	3.24%	2.34%	4.73%	4.34%	2.87%	5.34%	3.33%	4.02%	5.31%	4.01%	4.15%	6.03%	3.09%	10.03%	4.21%	3.82%	4.98%	3.90%	5.48%	4.22%	4.20%	5.64%	6.37%	6.63%	6.08%	5.93%	4.77%	
■ % Absent	2.52%	2.65%	2.70%	2.89%	2.91%	2.92%	3.06%	3.15%	3.18%	3.19%	3.36%	3.37%	3.66%	3.76%	3.84%	3.85%	3.95%	4.19%	4.24%	4.29%	4.34%	4.48%	4.49%	4.55%	4.66%	4.76%	4.86%	5.00%	5.03%	5.07%	5.10%	5.10%	5.11%	5.17%	5.22%	