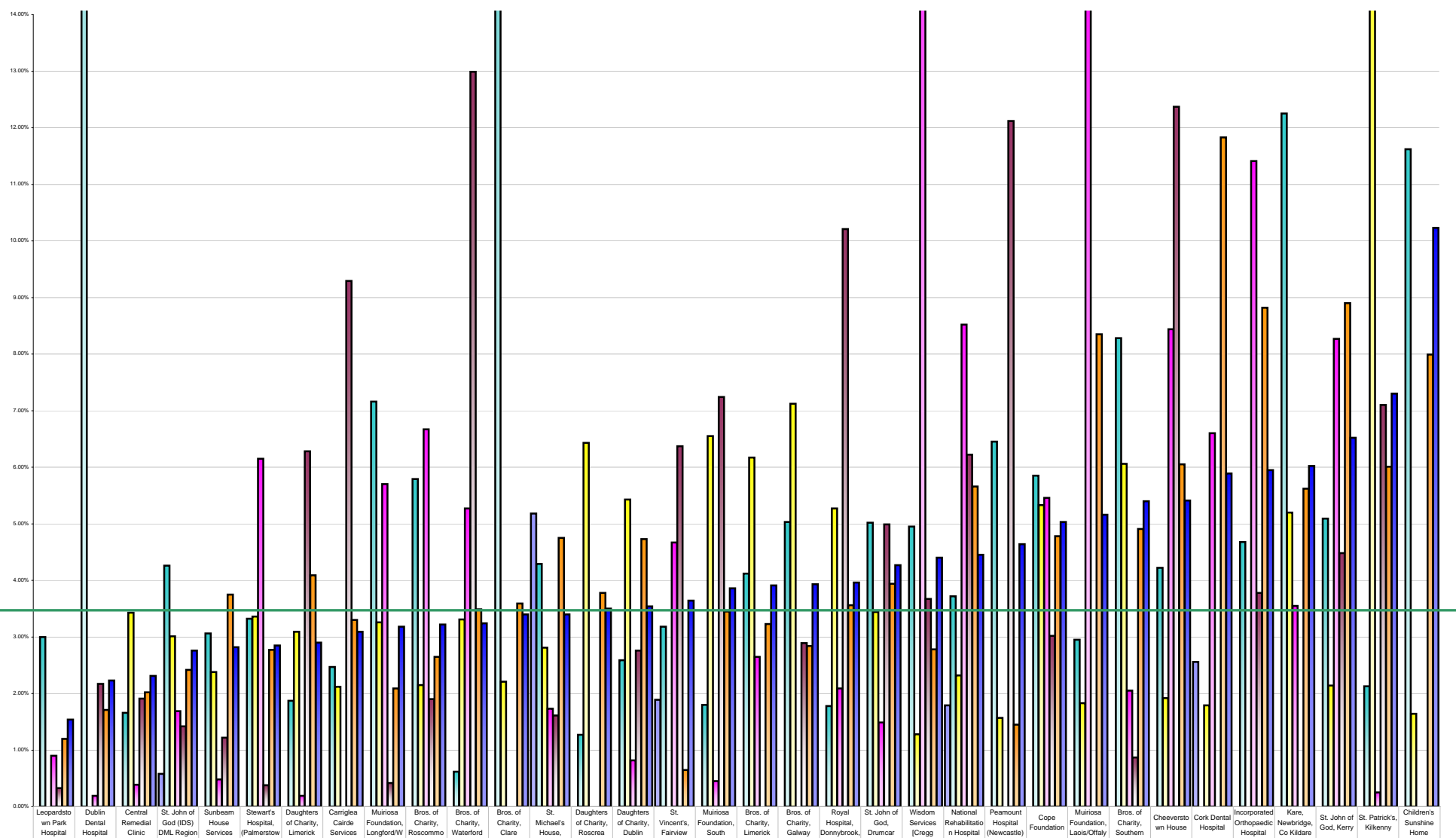


Voluntary Agency Absenteeism August 2013 Per Grade Category

Overall Target 3.5%



	Leopardstown Park Hospital	Dublin Dental Hospital	Central Remedial Clinic	St. John of God (DS) DML Region	Sunbeam House Services	Stewart's Hospital, Palmerstown	Daughters of Charity, Limerick	Carriglea Cairde Services	Muiriosa Foundation, Longford/W	Bros. of Charity, Roscommo	Bros. of Charity, Waterford	Bros. of Charity, Clare	St. Michael's House,	Daughters of Charity, Roscrea	Daughters of Charity, Dublin	St. Vincent's, Fairview	Muiriosa Foundation, South	Bros. of Charity, Limerick	Bros. of Charity, Galway	Royal Hospital, Doneybrook	St. John of God, Drumcar	Wisdom Services (Cregg)	National Rehabilitation Hospital	Peamount Hospital (Newcastle)	Cope Foundation	Muiriosa Foundation, Laois/O'Leary	Bros. of Charity, Southern	Cheeverstown House	Cork Dental Hospital	Incorporated Orthopaedic Hospital	Kare, Newbridge, Co Kildare	St. John of God, Kerry	St. Patrick's, Kilkenny	Children's Sunshine Home	
% Absent Medical Dental	0.00%	0.00%	0.00%	0.58%	0.00%	0.00%	0.00%	0.00%	0.00%	0.00%	0.00%	5.18%	0.00%	0.00%	1.89%	0.00%	0.00%	0.00%	0.00%	0.00%	0.00%	0.00%	1.79%	0.00%	0.00%	0.00%	0.00%	2.56%	0.00%	0.00%	0.00%	0.00%	0.00%	0.00%	0.00%
% Absent Nursing	3.00%	28.00%	1.66%	4.26%	3.06%	3.32%	1.87%	2.47%	7.16%	5.79%	0.62%	21.75%	4.29%	1.27%	2.59%	3.18%	1.80%	4.12%	5.03%	1.78%	5.02%	4.95%	3.72%	6.45%	5.85%	2.95%	8.28%	4.22%	0.00%	4.68%	12.25%	5.09%	2.13%	11.62%	
% Absent Health & Social Care Professionals	0.00%	0.00%	3.43%	3.01%	2.38%	3.36%	3.09%	2.12%	3.26%	2.15%	3.31%	2.21%	2.81%	6.43%	5.43%	0.00%	6.55%	6.17%	7.12%	5.27%	3.44%	1.28%	2.32%	1.57%	5.33%	1.83%	6.06%	1.92%	1.79%	0.00%	0.00%	2.14%	16.50%	1.64%	
% Absent Management Admin	0.90%	0.19%	0.39%	1.69%	0.48%	6.15%	0.19%	0.00%	5.70%	6.67%	5.27%	0.00%	1.73%	0.00%	0.82%	4.67%	0.45%	2.65%	0.00%	2.09%	1.49%	17.46%	8.52%	0.00%	5.46%	14.41%	2.05%	8.44%	6.60%	11.41%	3.55%	8.27%	0.25%	0.00%	
% Absent General Support Staff	0.33%	2.17%	1.91%	1.42%	1.22%	0.38%	6.28%	9.29%	0.42%	1.90%	12.99%	0.00%	1.61%	0.00%	2.76%	6.37%	7.24%	0.00%	2.89%	10.21%	4.99%	3.67%	6.22%	12.12%	3.02%	0.00%	0.87%	12.37%	0.00%	3.78%	0.00%	4.48%	7.10%	0.00%	
% Absent Other Patient & Client Care	1.20%	1.71%	2.02%	2.42%	3.75%	2.77%	4.09%	3.30%	2.09%	2.65%	3.49%	3.59%	4.75%	3.78%	4.73%	0.65%	3.45%	3.23%	2.84%	3.56%	3.94%	2.78%	5.66%	1.45%	4.78%	8.35%	4.91%	6.05%	11.83%	8.82%	5.62%	8.90%	6.01%	7.99%	
% Absent	1.54%	2.23%	2.31%	2.76%	2.82%	2.85%	2.90%	3.09%	3.18%	3.22%	3.24%	3.40%	3.40%	3.50%	3.54%	3.64%	3.86%	3.91%	3.93%	3.96%	4.27%	4.40%	4.45%	4.64%	5.03%	5.16%	5.40%	5.41%	5.89%	5.95%	6.02%	6.52%	7.30%	10.23%	