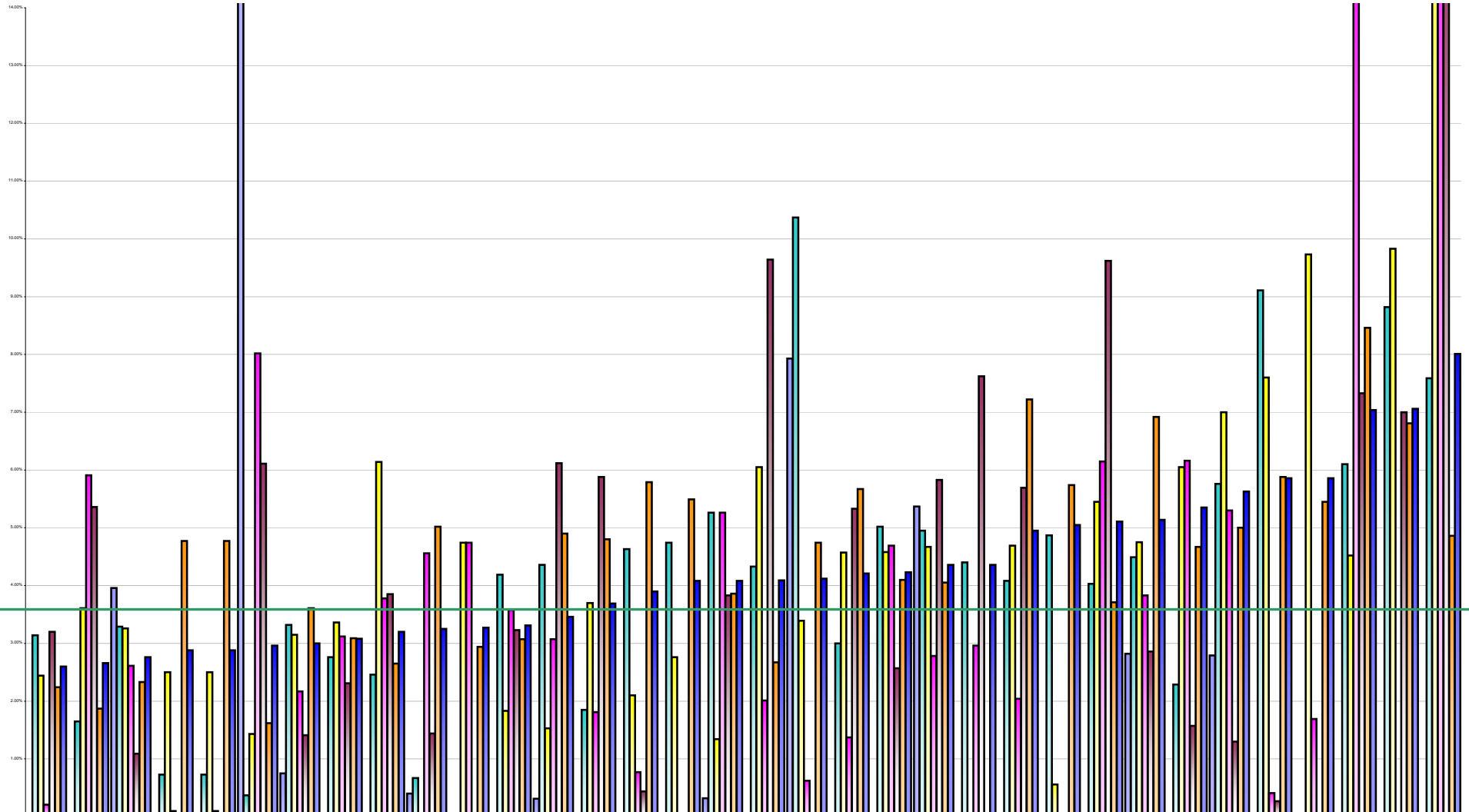


Voluntary Agency Absenteeism April 2014 Per Grade Category

Overall Target 3.5%



	St. John of God, Duncmar	Royal Hospital, Domybrook	St. John of God, DML	Carriglea Cairde Services	Carriglea Cairde Services	Incorporated Orthopaedic Hospital	St. Michael's House	Sunbeam House Services	St. John of God, Kerry	Dublin Dental Hospital	Bros. of Charity, Clare	Stewart's Hospital, (Palmerstown)	National Rehabilitation Hospital	Muiriosa Foundation, South	Muiriosa Foundation, Longford/W	Bros. of Charity, Limerick	Our Lady's Hospice & Care	Bros. of Charity, Roscommo	Cork Dental Hospital	Daughters of Charity, Dublin	Cope Foundation	Bros. of Charity, Galway	St. Vincent's, Fairview	Daughters of Charity, Limerick	Children's Sunshine Home	Peamount Hospital (Newcastle)	Cheeverstown House	Central Remedial Clinic	Bros. of Charity, Southern	Daughters of Charity, Roscrea	Kare, Newbridge, Co Kildare	Muiriosa Foundation, Laois/Offaly	Leopardstown Park Hospital	St. Patrick's, Kilkenny	
■ % Absent Medical Dental	0.00%	0.00%	3.96%	0.00%	0.00%	59.20%	0.75%	0.00%	0.00%	0.40%	0.00%	0.00%	0.31%	0.00%	0.00%	0.32%	0.00%	7.93%	0.00%	0.00%	5.37%	0.00%	0.00%	0.00%	0.00%	0.00%	2.82%	0.00%	2.79%	0.00%	0.00%	0.00%	0.00%	0.00%	0.00%
■ % Absent Nursing	3.14%	1.65%	3.29%	0.73%	0.73%	0.37%	3.32%	2.76%	2.46%	0.67%	0.00%	4.19%	4.36%	1.85%	4.63%	4.74%	5.26%	4.33%	10.37%	3.00%	5.02%	4.95%	4.40%	4.08%	4.87%	4.03%	4.49%	2.29%	5.76%	9.11%	0.00%	6.10%	8.82%	7.59%	
■ % Absent Health & Social Care Professionals	2.44%	3.61%	3.26%	2.50%	2.50%	1.43%	3.15%	3.36%	6.14%	0.00%	4.74%	1.83%	1.53%	3.70%	2.10%	2.76%	1.34%	6.05%	3.39%	4.57%	4.58%	4.67%	0.00%	4.69%	0.56%	5.45%	4.75%	6.05%	7.00%	7.60%	9.73%	4.52%	9.83%	19.99%	
■ % Absent Management Admin	0.21%	5.91%	2.61%	0.10%	0.10%	8.02%	2.17%	3.12%	3.78%	4.56%	4.74%	3.58%	3.07%	1.81%	0.77%	0.00%	5.26%	2.01%	0.62%	1.37%	4.69%	2.78%	2.96%	2.04%	0.00%	6.15%	3.83%	6.05%	5.30%	0.41%	1.69%	15.03%	0.00%	17.13%	
■ % Absent General Support Staff	3.20%	5.36%	1.09%	0.00%	0.00%	6.11%	1.41%	2.31%	3.85%	1.44%	0.00%	3.23%	6.12%	5.88%	0.44%	0.00%	3.83%	9.64%	0.00%	5.33%	2.57%	5.83%	7.62%	5.69%	0.00%	9.62%	2.86%	1.57%	1.30%	0.27%	0.00%	7.33%	7.00%	16.04%	
■ % Absent Other Patient & Client Care	2.24%	1.87%	2.33%	4.77%	4.77%	1.62%	3.61%	3.09%	2.65%	5.02%	2.94%	3.07%	4.90%	4.80%	5.79%	5.49%	3.86%	2.67%	4.74%	5.67%	4.10%	4.05%	0.00%	7.22%	5.74%	3.71%	6.92%	4.67%	5.00%	5.88%	5.45%	8.46%	6.81%	4.86%	
■ % Absent	2.60%	2.66%	2.76%	2.88%	2.88%	2.96%	3.00%	3.08%	3.20%	3.25%	3.27%	3.31%	3.46%	3.69%	3.90%	4.08%	4.08%	4.09%	4.12%	4.21%	4.23%	4.36%	4.36%	4.95%	5.05%	5.11%	5.14%	5.35%	5.63%	5.86%	5.86%	7.04%	7.06%	8.01%	