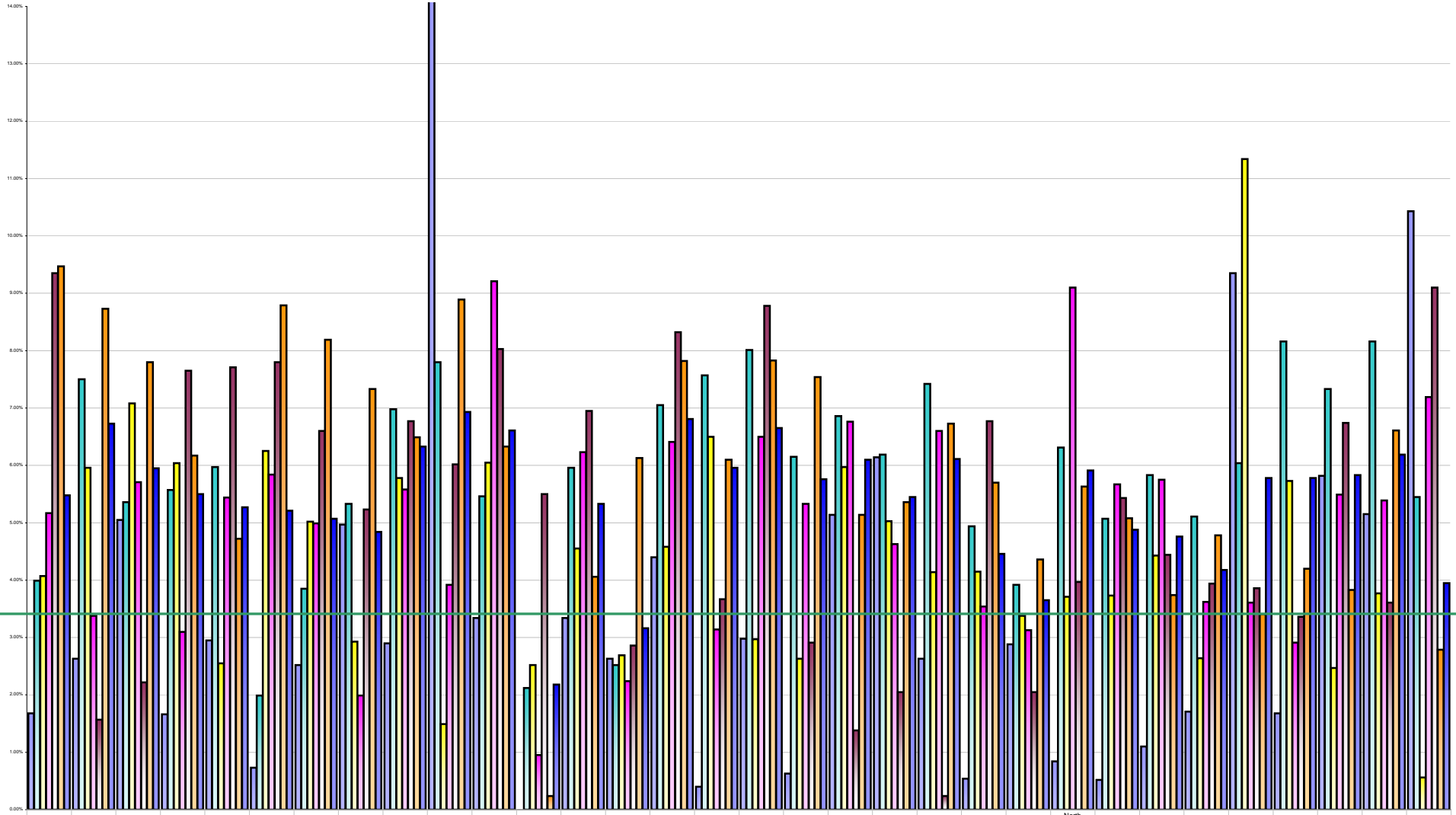


LHO Absenteeism February 2014 Per Grade Category



Overall Target 3.5%

	Carlow Kilkenny	Cavan Monaghan	Clare	Donegal	Dublin North	Dublin North Central	Dublin North West	Dublin South City	Dublin South East	Dublin South West	Dublin West	Dun Laoghaire	Galway	Kerry	Kildare West Wicklow	Laois Offaly	Limerick	Longford Westmeath	Louth	Mayo	Meath	North Cork	North Lee	North Tipperary East	Roscommon	Sligo Leitrim	South Lee	South Tipperary	Waterford	West Cork	Wexford	Wicklow
% Absent Medical Dental	1.68%	2.63%	5.05%	1.66%	2.95%	0.73%	2.52%	4.97%	2.90%	17.09%	3.34%	0.00%	3.34%	2.63%	4.40%	0.40%	2.98%	0.63%	5.14%	6.14%	2.63%	0.54%	2.88%	0.84%	0.52%	1.10%	1.71%	9.35%	1.68%	5.82%	5.15%	10.43%
% Absent Nursing	3.99%	7.50%	5.36%	5.57%	5.97%	1.99%	3.85%	5.33%	6.98%	7.80%	5.46%	2.12%	5.96%	2.52%	7.05%	7.57%	8.01%	6.15%	6.86%	6.19%	7.42%	4.94%	3.92%	6.31%	5.07%	5.83%	5.11%	6.04%	8.16%	7.33%	8.16%	5.45%
% Absent Health & Social Care Professionals	4.07%	5.96%	7.08%	6.04%	2.55%	6.25%	5.02%	2.93%	5.78%	1.49%	6.05%	2.52%	4.55%	2.69%	4.58%	6.50%	2.97%	2.63%	5.97%	5.03%	4.14%	4.15%	3.38%	3.71%	3.73%	4.43%	2.64%	11.34%	5.73%	2.47%	3.77%	0.56%
% Absent Management Admin	5.17%	3.38%	5.71%	3.10%	5.44%	5.84%	4.99%	1.99%	5.58%	3.92%	9.21%	0.95%	6.23%	2.24%	6.41%	3.14%	6.50%	5.33%	6.76%	4.63%	6.60%	3.54%	3.13%	9.10%	5.67%	5.75%	3.62%	3.61%	2.91%	5.49%	5.39%	7.19%
% Absent General Support Staff	9.35%	1.57%	2.22%	7.65%	7.71%	7.80%	6.60%	5.23%	6.77%	6.02%	1.57%	5.50%	6.95%	2.86%	8.32%	3.67%	8.78%	2.91%	1.38%	2.05%	0.24%	6.77%	2.05%	3.97%	5.43%	4.44%	3.94%	3.86%	3.36%	6.74%	3.61%	9.10%
% Absent Other Patient & Client Care	9.47%	8.73%	7.80%	6.17%	4.72%	8.79%	8.19%	7.33%	6.49%	8.89%	6.33%	0.24%	4.06%	6.13%	7.82%	6.10%	7.83%	7.54%	5.14%	5.36%	6.73%	5.70%	4.36%	5.63%	5.08%	3.74%	4.78%	3.41%	4.20%	3.83%	6.61%	2.79%
% Absent	5.48%	6.73%	5.95%	5.50%	5.27%	5.21%	5.07%	4.84%	6.33%	6.93%	6.61%	2.18%	5.33%	3.16%	6.81%	5.96%	6.65%	5.76%	6.10%	5.45%	6.11%	4.46%	3.65%	5.91%	4.88%	4.76%	4.18%	5.78%	5.78%	5.83%	6.19%	3.95%