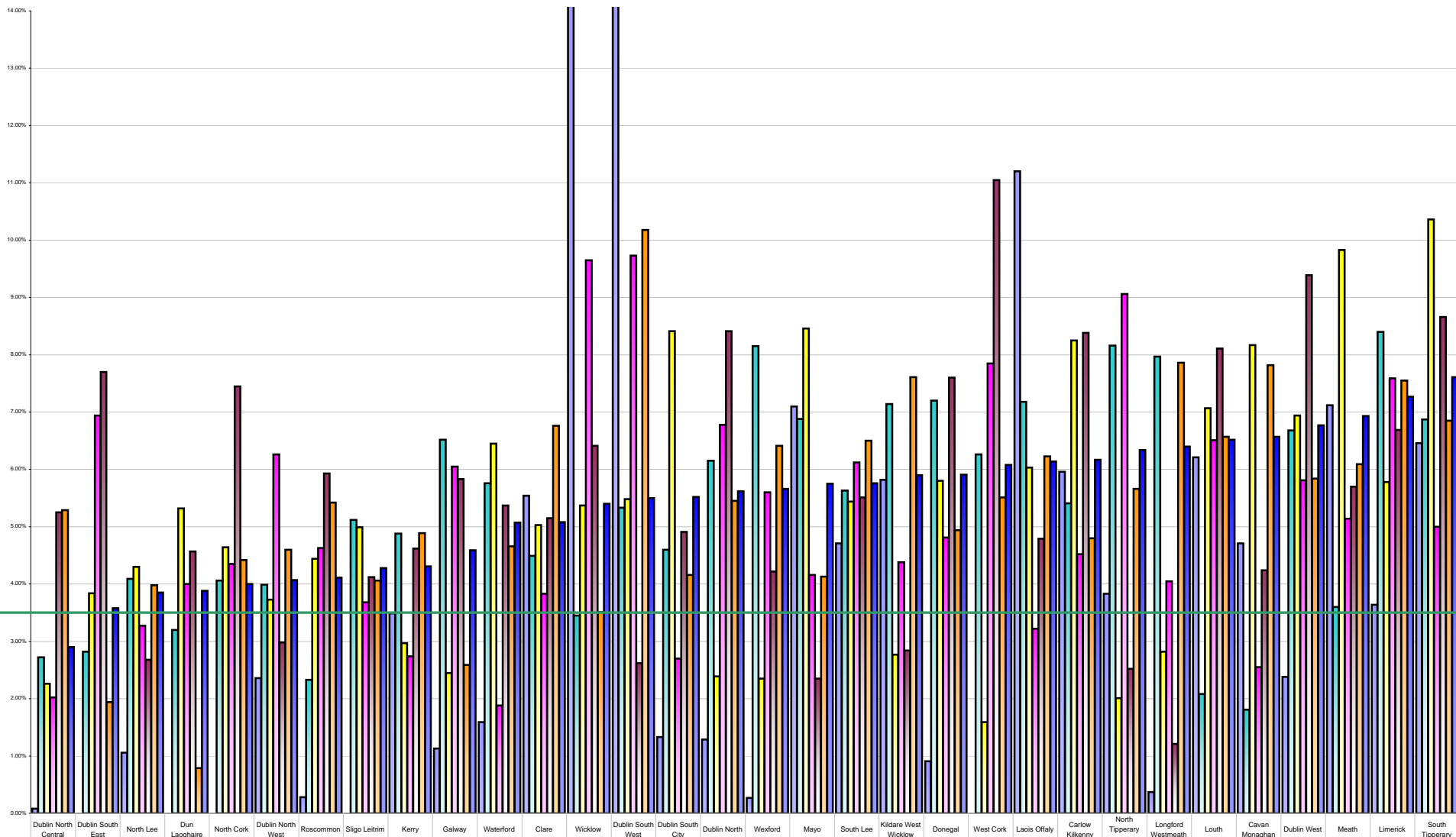


LHO Absenteeism December 2013 Per Grade Category



Overall Target 3.5%

	Dublin North Central	Dublin South East	North Lee	Dun Laoghaire	North Cork	Dublin North West	Roscommon	Sligo Leitrim	Kerry	Galway	Waterford	Clare	Wicklow	Dublin South West	Dublin South City	Dublin North	Wexford	Mayo	South Lee	Kildara West Wicklow	Donegal	West Cork	Laois Offaly	Carlow Kilkenny	North Tipperary East	Longford Westmeath	Louth	Cavan Monaghan	Dublin West	Meath	Limerick	South Tipperary
% Absent Medical Dental	0.08%	0.00%	1.06%	0.00%	0.00%	2.36%	0.28%	0.00%	3.49%	1.13%	1.59%	5.54%	14.55%	18.71%	1.33%	1.29%	0.27%	7.10%	4.71%	5.82%	0.91%	0.00%	11.20%	5.96%	3.83%	0.37%	6.21%	4.71%	2.38%	7.12%	3.64%	6.46%
% Absent Nursing	2.72%	2.82%	4.09%	3.20%	4.06%	3.99%	2.33%	5.12%	4.88%	6.52%	5.76%	4.49%	3.45%	4.60%	6.15%	8.15%	6.88%	5.63%	7.14%	7.20%	6.26%	5.33%	7.18%	5.41%	8.16%	7.97%	2.08%	1.81%	6.68%	3.60%	8.40%	6.87%
% Absent Health & Social Care Professionals	2.26%	3.84%	4.30%	5.32%	4.64%	3.73%	4.44%	4.99%	2.97%	2.45%	6.45%	5.03%	5.37%	5.48%	8.41%	2.39%	2.35%	8.46%	5.44%	2.77%	5.80%	1.59%	6.03%	8.25%	2.01%	2.82%	7.07%	8.17%	6.94%	9.83%	5.78%	10.36%
% Absent Management Admin	2.02%	6.94%	3.27%	4.00%	4.35%	6.26%	4.63%	3.68%	2.74%	6.05%	1.88%	3.83%	9.65%	9.73%	2.70%	6.78%	5.60%	4.16%	6.12%	4.38%	4.81%	7.85%	3.22%	4.52%	9.06%	4.05%	6.51%	2.55%	5.81%	5.14%	7.59%	5.00%
% Absent General Support Staff	5.25%	7.70%	2.68%	4.57%	7.45%	2.98%	5.93%	4.12%	4.62%	5.83%	5.37%	5.15%	6.41%	2.62%	4.91%	8.41%	4.22%	2.35%	5.51%	2.84%	7.60%	11.05%	4.79%	8.38%	8.41%	1.21%	8.11%	4.24%	9.39%	5.70%	6.69%	8.66%
% Absent Other Patient & Client Care	5.29%	1.94%	3.98%	0.79%	4.42%	4.60%	5.42%	4.06%	4.89%	2.59%	4.66%	6.76%	3.51%	10.18%	4.16%	5.45%	6.41%	4.13%	6.50%	7.61%	4.94%	5.51%	6.23%	4.80%	5.66%	7.86%	6.57%	7.82%	5.84%	6.09%	7.55%	6.85%
% Absent	2.90%	3.58%	3.85%	3.88%	4.00%	4.07%	4.11%	4.28%	4.31%	4.59%	5.07%	5.08%	5.40%	5.50%	5.52%	5.62%	5.66%	5.75%	5.76%	5.90%	5.91%	6.08%	6.14%	6.17%	6.34%	6.40%	6.52%	6.57%	6.77%	6.93%	7.27%	7.61%