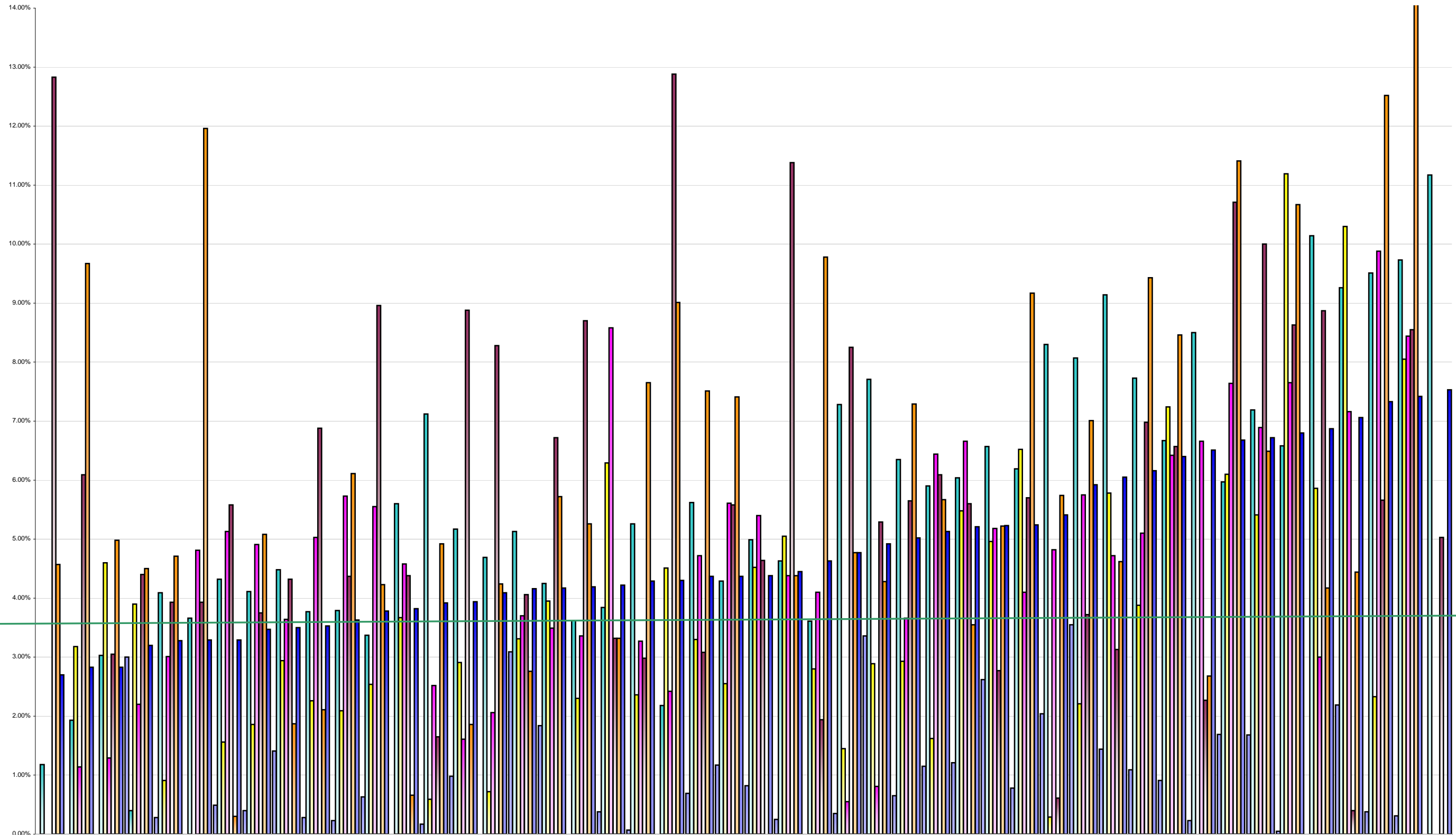


Hospital Absenteeism June 2012 Per Grade Category



Overall Target 3.5%

	MWR Orthopaedic	St. John's Hospital	St. Michael's	St. James's Hospital	Rotunda Hospital	Royal Victoria Eye & Ear	St. Columcille's	Beaumont Hospital	AMNCH	St. Vincent's	Connolly Hospital	Mater Hospital	St. Luke's, Rathgar	Mercy Hospital	Portlucula Hospital	National Maternity	Mayo Hospital	Our Lady's Children	Coombe Hospital	Mallow Hospital	Naas Hospital	Cappagh Hospital	Galway University	South Infirmary	Kerry Hospital	Children's University	Bantry Hospital	MW Hospital	Monaghan Hospital	Wexford Hospital	Letterkenny Hospital	Waterford Hospital	MR Hospital	Cork University	OLH Navan	MR Hospital Mullinga	Cavan Hospital	South Tipperary	MR Hospital	MWR Maternity	MWR Limerick Hospital	Sligo Hospital	St. Luke's Kilkenny	Louth Hospital	MWR Hospital, Ennis	Roscommon Hospital	OLOL Drogheda	Lourdes Orthopaedic	
% Absent Medical Dental	0.00%	0.00%	0.00%	3.00%	0.28%	0.00%	0.49%	0.40%	1.41%	0.28%	0.23%	0.63%	0.00%	0.17%	0.98%	0.00%	3.09%	1.84%	0.00%	0.38%	0.07%	0.00%	0.69%	1.17%	0.82%	0.25%	0.00%	0.35%	3.36%	0.65%	1.15%	1.21%	2.62%	0.78%	2.04%	3.55%	1.44%	1.09%	0.91%	0.23%	1.69%	1.68%	0.05%	0.00%	2.19%	0.38%	9.51%	9.73%	0.00%
% Absent Nursing	1.18%	1.93%	3.03%	0.40%	4.09%	3.66%	4.32%	4.11%	4.48%	3.77%	3.79%	3.37%	5.60%	7.12%	5.17%	4.69%	5.13%	4.25%	3.62%	3.84%	5.26%	2.18%	5.62%	4.29%	4.99%	4.63%	3.61%	7.28%	7.71%	6.35%	5.90%	6.04%	6.57%	6.19%	8.30%	8.07%	9.14%	7.73%	6.67%	8.50%	5.97%	7.19%	6.58%	10.14%	9.26%	9.51%	9.73%	11.17%	
% Absent Health & Social Care Professionals	0.00%	3.18%	4.60%	3.90%	0.91%	0.00%	1.56%	1.86%	2.94%	2.26%	2.09%	2.54%	3.67%	0.59%	2.91%	0.72%	3.31%	3.95%	2.30%	6.29%	2.36%	4.51%	3.30%	2.55%	4.52%	5.05%	2.80%	1.45%	2.89%	2.93%	1.62%	5.48%	4.96%	6.52%	0.29%	2.21%	5.78%	3.88%	7.24%	0.00%	6.10%	5.41%	11.19%	5.86%	10.30%	2.33%	8.05%	0.00%	
% Absent Management Admin	0.00%	1.14%	1.29%	2.20%	3.01%	4.81%	5.13%	4.91%	3.64%	5.03%	5.73%	5.55%	4.58%	2.52%	1.61%	2.06%	3.70%	3.49%	3.36%	8.58%	3.27%	2.42%	4.72%	5.61%	5.40%	4.38%	4.10%	0.55%	0.81%	3.66%	6.44%	6.66%	5.18%	4.10%	4.82%	5.75%	4.72%	5.10%	6.42%	6.66%	7.64%	6.89%	7.65%	3.00%	7.16%	9.88%	8.44%	0.00%	
% Absent General Support Staff	12.83%	6.09%	3.05%	4.40%	3.93%	3.93%	5.58%	3.75%	4.32%	6.88%	4.37%	8.96%	4.38%	1.65%	8.88%	8.28%	4.06%	6.72%	8.70%	3.32%	2.98%	12.88%	3.08%	5.58%	4.64%	11.38%	1.94%	8.25%	5.29%	5.65%	6.09%	5.60%	2.77%	5.70%	0.61%	3.72%	3.13%	6.98%	6.57%	2.27%	10.71%	10.00%	8.63%	8.87%	0.40%	5.66%	8.55%	5.03%	
% Absent Other Patient & Client Care	4.57%	9.67%	4.98%	4.50%	4.71%	11.96%	0.30%	5.08%	1.87%	2.11%	6.11%	4.23%	0.66%	4.92%	1.86%	4.24%	2.76%	5.72%	5.26%	3.32%	7.65%	9.01%	7.51%	7.41%	0.00%	4.38%	9.78%	4.77%	4.28%	7.29%	5.67%	3.55%	5.22%	9.17%	5.74%	7.01%	4.62%	9.43%	8.46%	2.68%	11.41%	6.49%	10.67%	4.17%	4.44%	12.52%	15.63%	0.00%	
% Absent	2.70%	2.83%	2.83%	3.20%	3.28%	3.29%	3.29%	3.47%	3.50%	3.53%	3.63%	3.78%	3.82%	3.92%	3.94%	4.09%	4.16%	4.17%	4.19%	4.22%	4.29%	4.30%	4.37%	4.37%	4.38%	4.45%	4.63%	4.77%	4.92%	5.02%	5.13%	5.21%	5.23%	5.24%	5.41%	5.92%	6.05%	6.16%	6.40%	6.51%	6.68%	6.72%	6.80%	6.87%	7.06%	7.33%	7.42%	7.53%	