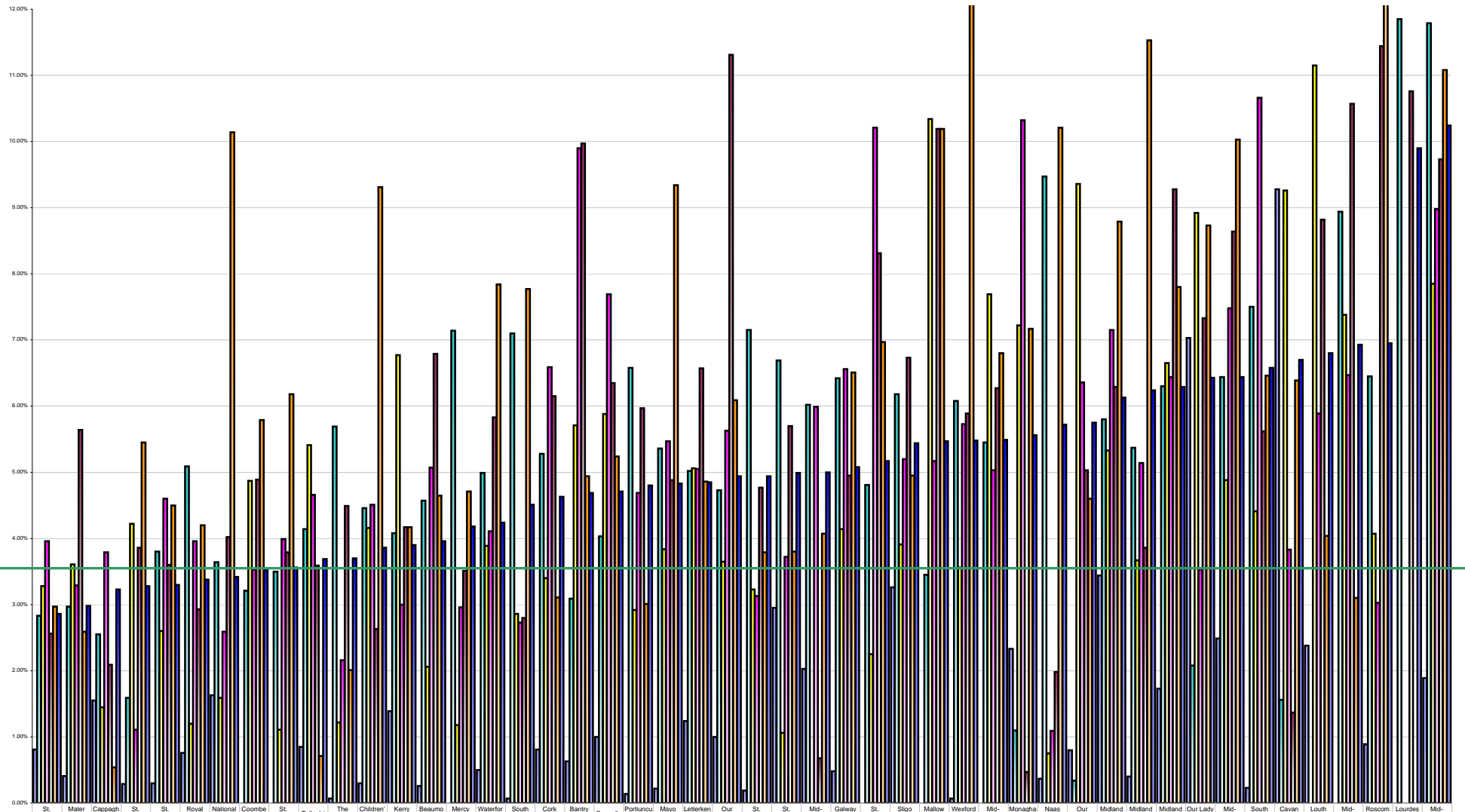


Hospital Absenteeism October 2013 Per Grade Category



Overall Target 3.5%

	St. Michael's Hospital	Mater Misericordiae	Cappagh National Orthopaedic Hospital	St. Luke's Hospital	St. James's Hospital	Royal Victoria Eye & Ear Hospital	National Maternity Hospital	Coombe Women & Infants	St. Vincent's University Hospital	Tallaght Hospital	The Rotunda Hospital	Children's University Hospital	Kerry General Hospital	Beaumont Hospital	Mercy University Regional	Waterford Regional	South Infirmary Victoria	Cork University General Hospital	Bantry General Hospital	Connolly Hospital	Portlucula Hospital	Mayo General Hospital	Letterkeny General	Our Lady's Children's	St. Luke's General	St. John's Hospital	Mid-Western Regional	Galway University	St. Columcille's	Sligo Regional Hospital	Malpas General Hospital	Wexford General Hospital	Mid-Western Regional	Monaghan General	Nass General Hospital	Our Lady's Hospital	Midland Regional Hospital	Midland Regional Hospital	Midland Regional Hospital	Our Lady of Lourdes	Mid-Western Regional	South Tipperary General	Cavan General Hospital	Louth County Hospital	Mid-Western Regional	Roscommon County	Lourdes Orthopaedic	Mid-Western Regional		
% Absent Medical Dental	0.81%	0.41%	1.55%	0.29%	0.30%	0.76%	1.63%	0.00%	0.00%	0.85%	0.07%	0.30%	1.39%	0.26%	0.00%	0.50%	0.07%	0.81%	0.63%	1.00%	0.14%	0.22%	1.24%	1.00%	0.19%	2.95%	2.03%	0.48%	0.00%	3.26%	0.00%	0.07%	0.00%	2.33%	0.37%	0.80%	3.44%	0.40%	1.73%	7.03%	2.49%	0.23%	9.28%	2.38%	0.00%	0.89%	0.00%	1.89%		
% Absent Nursing	2.83%	2.97%	2.55%	1.59%	3.80%	5.09%	3.64%	3.21%	3.50%	4.14%	5.69%	4.46%	4.08%	4.57%	7.14%	4.99%	7.10%	5.28%	3.09%	4.03%	6.58%	5.36%	5.02%	4.73%	7.15%	6.69%	6.02%	6.42%	4.81%	6.18%	3.45%	6.08%	6.45%	1.10%	9.47%	0.34%	5.80%	5.37%	6.30%	2.08%	6.44%	7.50%	1.56%	0.00%	8.94%	6.45%	11.85%	11.79%		
% Absent Health & Social Care Professionals	3.28%	3.61%	1.45%	4.22%	2.60%	1.20%	1.59%	4.87%	1.11%	5.41%	1.22%	4.16%	6.77%	2.06%	1.18%	3.89%	2.86%	3.40%	5.71%	5.88%	2.92%	3.84%	5.06%	3.65%	3.23%	1.06%	0.00%	4.14%	2.25%	3.91%	10.34%	3.56%	7.69%	7.22%	0.75%	9.36%	5.33%	3.67%	6.65%	8.92%	4.88%	4.41%	9.26%	11.15%	7.38%	4.07%	0.00%	7.85%		
% Absent Management Admin	3.96%	3.29%	3.79%	1.11%	4.60%	3.96%	2.59%	3.53%	3.99%	4.66%	2.16%	4.51%	3.00%	5.07%	2.96%	4.11%	2.73%	6.59%	9.90%	7.69%	4.69%	5.47%	5.05%	5.63%	3.13%	3.72%	5.99%	6.56%	10.21%	5.20%	5.17%	5.73%	5.03%	10.32%	1.09%	6.36%	7.15%	5.14%	6.44%	3.53%	7.48%	10.66%	3.83%	5.89%	6.47%	3.03%	0.00%	8.98%		
% Absent General Support Staff	2.56%	5.64%	2.09%	3.86%	3.60%	2.93%	4.02%	4.89%	3.79%	3.59%	4.49%	2.63%	4.17%	6.79%	3.51%	5.83%	2.80%	6.15%	9.97%	6.35%	5.97%	4.88%	6.57%	11.31%	4.77%	5.70%	0.68%	4.95%	8.31%	6.73%	10.19%	5.89%	6.27%	0.47%	1.98%	5.03%	6.29%	3.86%	9.28%	7.33%	8.64%	5.62%	1.37%	8.82%	10.57%	11.44%	10.76%	9.73%		
% Absent Other Patient & Client Care	2.97%	2.59%	0.54%	5.45%	4.50%	4.20%	10.14%	5.79%	6.18%	0.71%	2.01%	9.31%	4.17%	4.65%	4.71%	7.84%	7.77%	3.11%	4.94%	5.24%	3.01%	9.34%	4.86%	6.09%	3.79%	3.80%	4.07%	6.51%	6.97%	4.95%	10.19%	12.12%	6.80%	7.17%	10.21%	4.60%	8.79%	11.53%	7.80%	6.43%	6.44%	6.56%	6.70%	6.80%	6.93%	4.04%	3.10%	31.30%	0.00%	11.08%
% Absent	2.86%	2.98%	3.23%	3.28%	3.30%	3.38%	3.42%	3.53%	3.56%	3.69%	3.70%	3.86%	3.90%	3.96%	4.18%	4.24%	4.51%	4.63%	4.69%	4.71%	4.80%	4.83%	4.85%	4.94%	4.94%	4.99%	5.00%	5.08%	5.17%	5.44%	5.47%	5.48%	5.49%	5.56%	5.72%	5.75%	6.13%	6.24%	6.29%	6.43%	6.44%	6.56%	6.70%	6.80%	6.93%	6.95%	9.90%	10.24%		