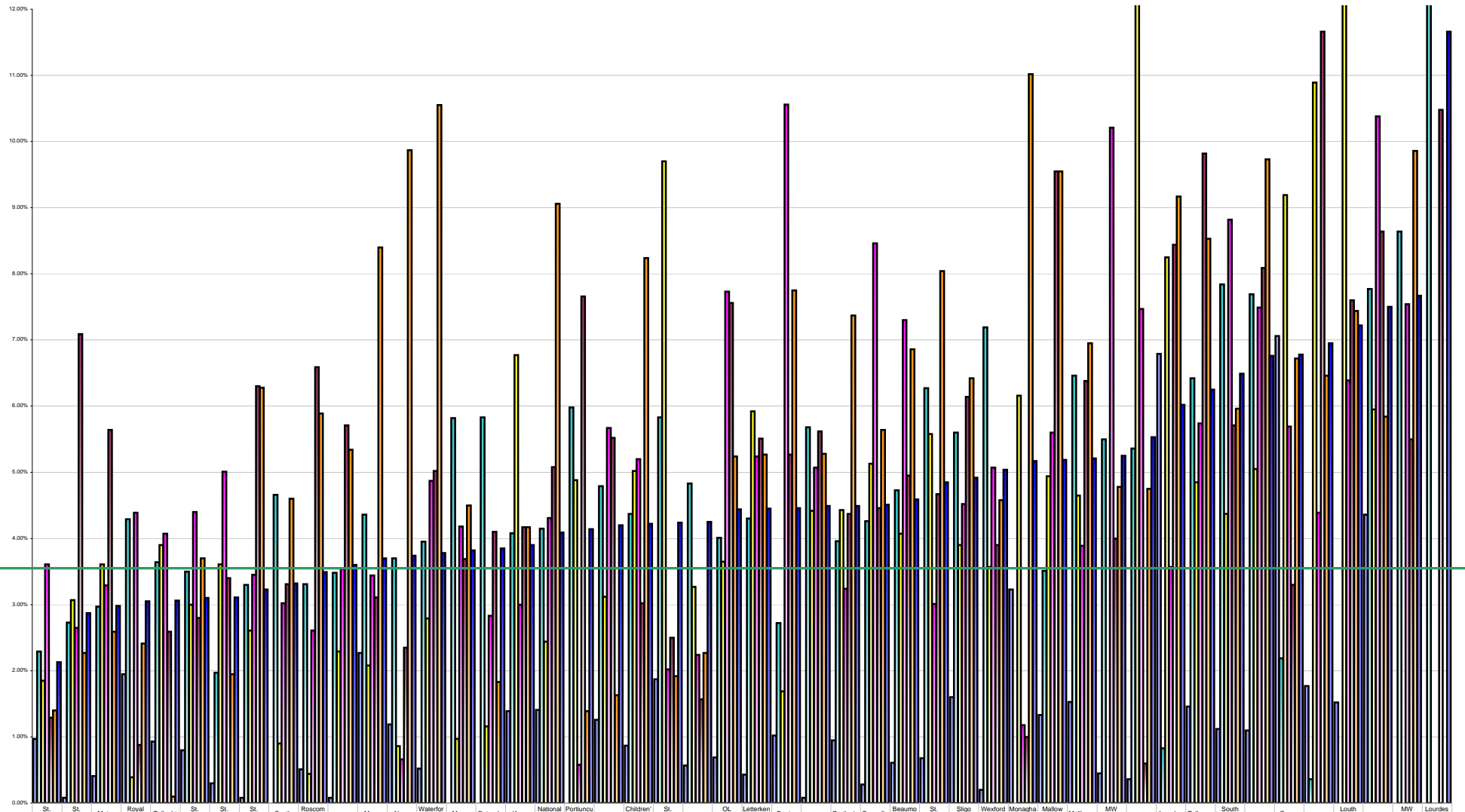


Hospital Absenteeism November 2013 Per Grade Category



Overall Target 3.5%

	St. Michael's Hospital	St. Columcille's Hospital	Mater Hospital	Royal Victoria Eye & Hospital	Tallaght Hospital	St. James's Hospital	St. Luke's Hospital	St. Vincent's Hospital	South Infirmary	Roscommon Hospital	Coombe	Mayo Hospital	Naas Hospital	Waterford Hospital	Mercy Hospital	Rounds Hospital	Kerry Hospital	National Maternity Hospital	Portlucula Hospital	CUH	Children's University	St. John's Hospital	Cappagh	OL Children's Hospital	Letterkenry Hospital	Santry Hospital	GUH	Portlaoise	Connolly Hospital	Beumont Hospital	St. Luke's Kilkenny	Sligo Regional Hospital	Wexford General Hospital	Monaghan Hospital	Mallow General Hospital	Mullingar Hospital	MW Maternity Hospital	Nenagh	Lourdes Hospital	Tullamore	South Tipperary Hospital	Limerick	Cavan Hospital	Navan	Louth County Hospital	Eris	MW Regional Orthopaedic	Lourdes
% Absent Medical Dental	0.97%	0.08%	0.41%	1.95%	0.93%	0.80%	0.30%	0.08%	0.00%	0.51%	0.08%	2.27%	1.19%	0.52%	0.00%	0.00%	1.39%	1.41%	0.00%	1.26%	0.87%	1.87%	0.57%	0.69%	0.43%	1.02%	0.08%	0.95%	0.28%	0.61%	0.68%	1.60%	0.20%	3.23%	1.33%	1.53%	0.45%	0.36%	6.79%	1.46%	1.12%	1.10%	7.06%	1.77%	1.52%	4.36%	0.00%	0.00%
% Absent Nursing	2.29%	2.73%	2.97%	4.29%	3.64%	3.50%	1.97%	3.30%	4.66%	3.31%	3.48%	4.36%	3.70%	3.95%	5.82%	5.83%	4.08%	4.15%	5.98%	4.79%	4.37%	5.83%	4.83%	4.01%	4.30%	2.72%	5.68%	3.96%	4.26%	4.73%	6.27%	7.19%	0.00%	3.51%	6.46%	5.50%	5.36%	0.83%	6.42%	7.84%	7.69%	2.19%	0.36%	0.00%	7.77%	8.64%	15.11%	
% Absent Health & Social Care Professionals	1.85%	3.07%	3.61%	0.39%	3.90%	3.00%	3.61%	2.61%	0.90%	0.44%	2.29%	2.08%	0.86%	2.79%	0.97%	1.16%	6.77%	2.44%	4.88%	3.12%	5.02%	9.70%	3.27%	3.65%	5.92%	1.69%	4.42%	4.43%	5.13%	4.07%	5.58%	3.90%	3.57%	6.16%	4.94%	4.65%	0.00%	15.59%	8.25%	4.85%	4.37%	5.05%	9.19%	10.89%	13.54%	5.95%	0.00%	0.00%
% Absent Management Admin	3.61%	2.65%	3.29%	4.39%	4.07%	4.40%	5.01%	3.45%	3.02%	2.61%	3.54%	3.44%	0.66%	4.87%	4.18%	2.83%	3.00%	4.31%	0.58%	5.67%	5.20%	2.02%	2.24%	7.73%	5.24%	10.56%	5.07%	3.24%	8.46%	7.30%	3.01%	4.52%	5.07%	1.18%	5.60%	3.89%	10.21%	7.47%	3.57%	5.74%	8.82%	7.49%	5.69%	4.39%	6.39%	10.38%	7.54%	0.00%
% Absent General Support Staff	1.29%	7.09%	5.64%	0.88%	2.59%	2.80%	3.40%	6.30%	3.31%	6.59%	5.71%	3.11%	2.35%	5.02%	3.69%	4.10%	4.17%	5.08%	7.66%	5.52%	3.02%	2.50%	1.57%	7.56%	5.51%	5.27%	5.62%	4.37%	4.46%	4.95%	4.67%	6.14%	3.90%	1.00%	9.55%	6.38%	4.00%	0.60%	8.44%	9.82%	5.71%	8.09%	3.30%	11.66%	7.60%	8.64%	5.50%	10.48%
% Absent Other Patient & Client Care	1.40%	2.27%	2.59%	2.41%	0.10%	3.70%	1.95%	6.28%	4.60%	5.89%	5.34%	8.40%	9.87%	10.55%	4.50%	1.83%	4.17%	9.06%	1.39%	1.63%	8.24%	1.92%	2.27%	5.24%	5.27%	7.75%	5.28%	7.37%	5.64%	6.86%	8.04%	6.42%	4.58%	11.02%	9.55%	6.95%	4.78%	4.75%	9.17%	8.53%	5.96%	6.73%	6.72%	6.46%	7.44%	5.84%	9.86%	0.00%
% Absent	2.13%	2.87%	2.98%	3.05%	3.06%	3.10%	3.11%	3.23%	3.32%	3.49%	3.60%	3.70%	3.74%	3.78%	3.82%	3.85%	3.90%	4.09%	4.14%	4.20%	4.22%	4.24%	4.25%	4.44%	4.45%	4.46%	4.49%	4.49%	4.51%	4.59%	4.85%	4.92%	5.04%	5.17%	5.19%	5.21%	5.25%	5.53%	6.02%	6.25%	6.49%	6.76%	6.78%	6.95%	7.22%	7.50%	7.67%	11.66%