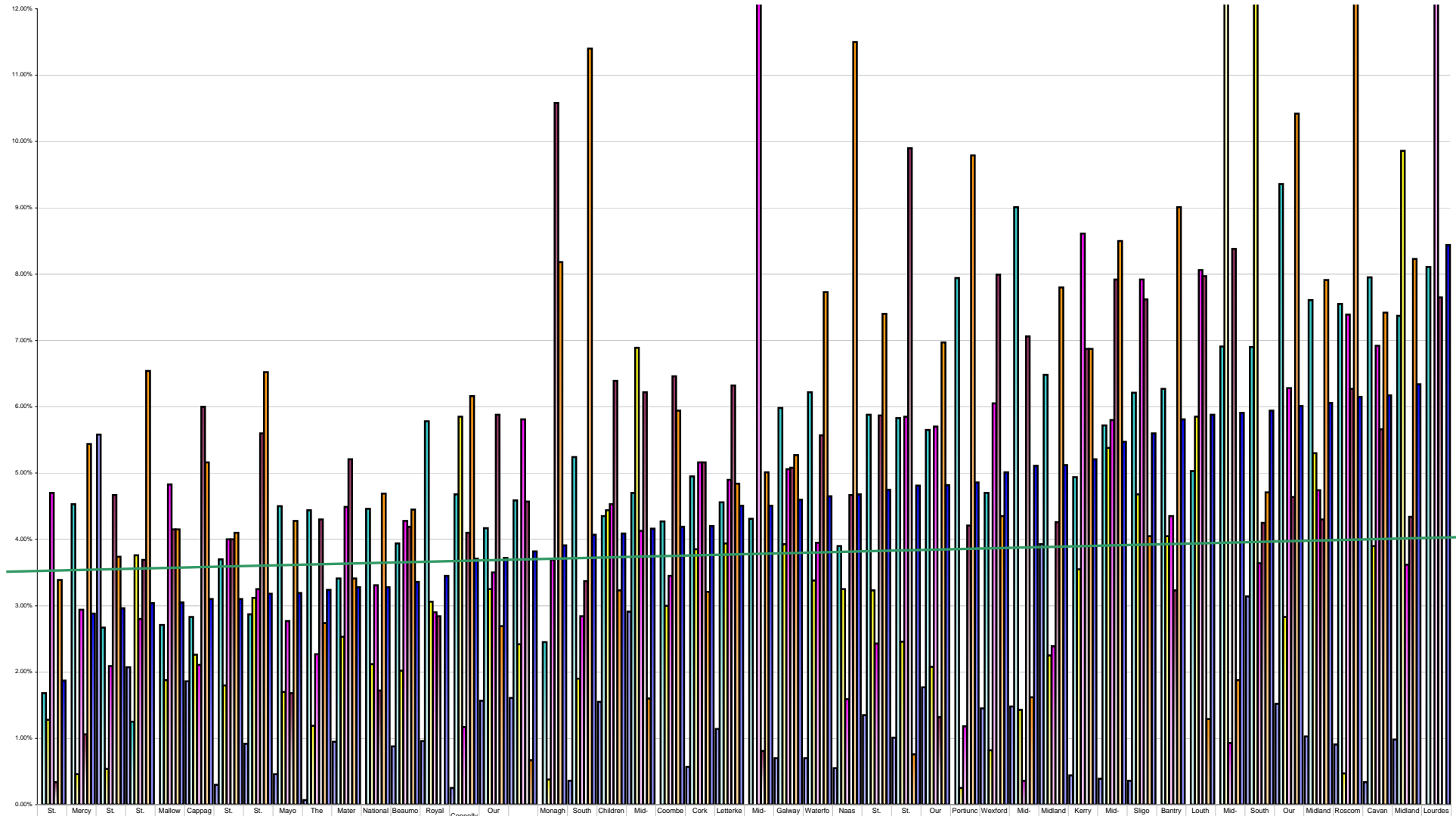


Hospital Absenteeism May 2013 Per Grade Category



Overall Target 3.5%

	St. Michael's	Mercy University Hospital	St. John's Hospital	St. Luke's Hospital	Mallow General Hospital	Cappagh National	St. James's Hospital	St. Vincent's Hospital	Mayo General Hospital	The Rotunda Hospital	Mater Misericordiae	National Maternity Hospital	Beaumont Hospital	Royal Victoria Eye & Ear Hospital	Connolly Hospital	Our Lady's Children AMNCH	Monaghan General	South Infirmary Victoria	Children's University	Mid-Western Regional	Coombe Women & Infants	Cork University General	Letterkenny General	Mid-Western Regional	Galway University	Waterford Regional	Naas General	St. Luke's General	St. Columcille's	Our Lady's Hospital	Portlucula Hospital	Wexford General Hospital	Mid-Western Regional	Midland Regional	Kerry General Hospital	Mid-Western Regional	Sligo Regional	Bantry General Hospital	Louth County Hospital	Mid-Western Regional	South Tipperary	Our Lady of Lourdes	Midland Regional	Roscommon County	Cavan General Hospital	Midland Regional	Lourdes Orthopaedic		
% Absent Medical Dental	0.00%	0.00%	5.58%	2.07%	0.00%	1.86%	0.30%	0.92%	0.46%	0.07%	0.95%	0.00%	0.88%	0.96%	0.25%	1.57%	1.61%	0.00%	0.36%	1.55%	2.91%	0.00%	0.57%	1.14%	0.00%	0.70%	0.70%	0.55%	1.35%	1.01%	1.77%	0.00%	1.45%	1.48%	3.93%	0.44%	0.39%	0.36%	0.00%	0.00%	0.00%	3.14%	1.52%	1.03%	0.91%	0.34%	0.98%	0.00%	
% Absent Nursing	1.68%	4.53%	2.67%	1.25%	2.71%	2.83%	3.70%	2.87%	4.50%	4.44%	3.41%	4.46%	3.94%	5.78%	4.68%	4.17%	4.59%	2.45%	5.24%	4.35%	4.70%	4.27%	4.95%	4.56%	4.31%	5.98%	6.22%	3.90%	5.88%	5.83%	5.65%	7.94%	4.70%	9.01%	6.48%	4.94%	5.72%	6.21%	6.27%	5.03%	6.91%	6.90%	9.36%	7.61%	7.55%	7.95%	7.37%	8.11%	
% Absent Health & Social Care Professionals	1.28%	0.46%	0.54%	3.76%	1.88%	2.26%	1.80%	3.12%	1.70%	1.19%	2.53%	2.12%	2.02%	3.06%	5.85%	3.25%	2.42%	0.38%	1.90%	4.44%	6.89%	3.00%	3.85%	3.94%	0.00%	3.93%	3.38%	3.25%	3.23%	2.46%	2.08%	0.25%	0.82%	1.43%	2.25%	3.55%	5.38%	4.68%	4.05%	5.85%	79.67%	13.23%	2.83%	5.30%	0.47%	3.90%	9.86%		
% Absent Management Admin	4.70%	2.94%	2.09%	2.80%	4.83%	2.11%	4.00%	3.25%	2.77%	2.27%	4.49%	3.31%	4.28%	2.90%	1.17%	3.50%	5.81%	3.69%	2.84%	4.53%	4.13%	3.45%	5.16%	4.90%	12.19%	5.06%	3.95%	1.59%	2.43%	5.85%	5.70%	1.18%	6.05%	0.36%	2.39%	8.61%	5.80%	7.92%	7.62%	3.23%	7.97%	8.38%	4.25%	4.64%	4.30%	6.27%	5.66%	4.34%	22.72%
% Absent General Support Staff	0.34%	1.06%	4.67%	3.69%	4.15%	6.00%	4.00%	5.60%	1.68%	4.30%	5.21%	1.72%	4.19%	2.84%	4.10%	5.88%	4.57%	10.58%	3.37%	6.39%	6.22%	6.46%	5.16%	6.32%	0.81%	5.08%	5.57%	4.67%	5.87%	9.90%	1.32%	4.21%	7.99%	7.06%	4.26%	6.87%	7.92%	7.62%	3.23%	7.97%	8.38%	4.25%	4.64%	4.30%	6.27%	5.66%	4.34%	7.65%	
% Absent Other Patient & Client Care	3.39%	5.44%	3.74%	6.54%	4.15%	5.16%	4.10%	6.52%	4.28%	2.74%	3.41%	4.69%	4.45%	0.00%	6.16%	2.69%	0.67%	8.18%	11.40%	3.23%	1.60%	5.94%	3.21%	4.84%	5.01%	5.27%	7.73%	11.50%	7.40%	0.76%	6.97%	9.79%	4.35%	1.62%	7.80%	6.87%	8.50%	4.05%	9.01%	1.29%	1.88%	4.71%	10.42%	7.91%	13.03%	7.42%	8.23%		
% Absent	1.87%	2.88%	2.96%	3.04%	3.05%	3.10%	3.10%	3.18%	3.19%	3.24%	3.28%	3.28%	3.36%	3.45%	3.71%	3.72%	3.82%	3.91%	4.07%	4.09%	4.16%	4.19%	4.20%	4.51%	4.51%	4.60%	4.65%	4.68%	4.75%	4.81%	4.82%	4.86%	5.01%	5.11%	5.12%	5.21%	5.47%	5.60%	5.81%	5.88%	5.91%	5.94%	6.01%	6.06%	6.15%	6.17%	6.34%	8.44%	