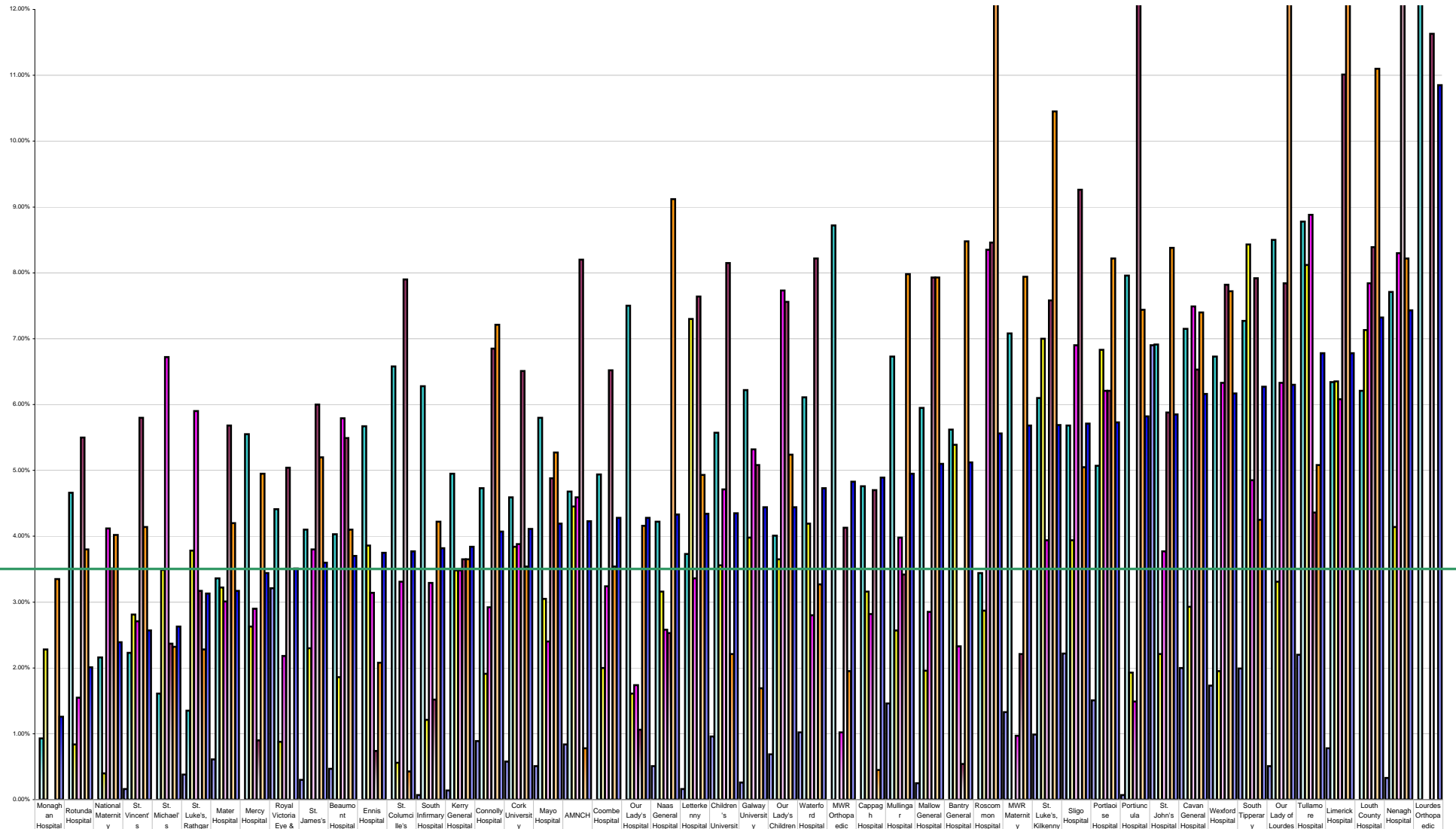


Hospital Absenteeism July 2013 Per Grade Category



Overall Target 3.5%

	Monagh an Hospital	Rotunda Hospital	National Maternity	St. Vincent's	St. Michael's	St. Luke's, Rathgar	Mater Hospital	Mercy Hospital	Royal Victoria Eye &	St. James's	Beaumont Hospital	Ennis Hospital	St. Columcille's	South Infirmary Hospital	Kerry General Hospital	Connolly Hospital	Cork University	Mayo Hospital	AMNCH	Coombe Hospital	Our Lady's Hospital	Naas General Hospital	Letterkeny Hospital	Children's University	Galway University	Our Lady's Children	Waterford Hospital	MWR Orthopaedic	Cappagh Hospital	Mullingar Hospital	Mallow General Hospital	Bantry General Hospital	Roscommon Hospital	MWR Maternity	St. Luke's, Kilkenny	Sligo Hospital	Portlaoise Hospital	Portlaoise Hospital	St. John's Hospital	Cavan General Hospital	Westford Hospital	South Tipperary	Our Lady of Lourdes	Tullamore Hospital	Limerick Hospital	Louth County Hospital	Nenagh Hospital	Lourdes Orthopaedic
% Absent Medical Dental	0.00%	0.00%	0.00%	0.16%	0.00%	0.38%	0.61%	0.00%	3.21%	0.30%	0.47%	0.00%	0.00%	0.07%	0.14%	0.89%	0.58%	0.51%	0.84%	0.00%	0.00%	0.51%	0.16%	0.96%	0.26%	0.69%	1.02%	0.00%	0.00%	1.46%	0.25%	0.00%	0.00%	1.33%	0.99%	2.22%	1.51%	0.07%	6.90%	2.00%	1.73%	1.99%	0.51%	2.20%	0.78%	0.00%	0.33%	0.00%
% Absent Nursing	0.93%	4.66%	2.16%	2.23%	1.61%	1.35%	3.36%	5.55%	4.41%	4.10%	4.03%	5.67%	6.58%	6.28%	4.95%	4.73%	4.59%	5.80%	4.68%	4.94%	7.50%	4.22%	3.73%	5.57%	6.22%	4.01%	6.11%	8.72%	4.76%	6.73%	5.95%	5.62%	3.44%	7.08%	6.10%	5.68%	5.07%	7.96%	6.91%	7.15%	6.73%	7.27%	8.50%	8.78%	6.34%	6.21%	7.71%	13.34%
% Absent Health & Social Care Professionals	2.28%	0.84%	0.40%	2.81%	3.49%	3.78%	3.22%	2.63%	0.88%	2.30%	1.86%	3.86%	0.56%	1.21%	3.48%	1.91%	3.84%	3.05%	4.45%	2.00%	1.61%	3.16%	7.30%	3.56%	3.98%	3.65%	4.19%	0.00%	3.16%	2.57%	1.96%	5.39%	2.87%	0.00%	7.00%	3.94%	6.83%	1.93%	2.21%	2.93%	1.95%	8.43%	3.31%	8.12%	6.35%	7.13%	4.14%	0.00%
% Absent Management Admin	0.00%	1.55%	4.12%	2.71%	6.72%	5.90%	3.01%	2.90%	2.18%	3.80%	5.79%	3.14%	3.31%	3.29%	3.48%	2.92%	3.88%	2.40%	4.59%	3.24%	1.74%	2.56%	3.36%	4.71%	5.32%	7.73%	2.80%	1.02%	2.62%	3.98%	2.85%	2.33%	8.35%	0.97%	3.94%	6.90%	6.21%	1.49%	3.77%	7.49%	6.33%	4.85%	6.33%	8.88%	6.08%	7.84%	8.30%	0.00%
% Absent General Support Staff	0.00%	5.50%	3.51%	5.80%	2.37%	3.17%	5.68%	0.90%	5.04%	6.00%	5.49%	0.74%	7.90%	1.52%	3.65%	6.85%	6.51%	4.88%	8.20%	6.52%	1.06%	2.53%	7.64%	8.15%	5.08%	7.56%	8.22%	4.13%	4.70%	3.42%	7.93%	0.54%	8.46%	2.21%	7.58%	9.26%	6.21%	12.14%	5.88%	6.53%	7.82%	7.92%	7.84%	4.36%	11.01%	8.39%	18.39%	11.63%
% Absent Other Patient & Client Care	3.35%	3.80%	4.02%	4.14%	2.32%	2.28%	4.20%	4.95%	0.00%	5.20%	4.10%	2.08%	0.43%	4.22%	3.65%	7.21%	3.54%	5.27%	0.78%	3.54%	4.16%	9.12%	4.93%	2.21%	1.69%	5.24%	3.27%	1.95%	0.45%	7.98%	7.93%	8.48%	17.82%	7.94%	10.45%	5.05%	8.22%	7.44%	8.38%	7.40%	7.72%	4.25%	18.52%	5.08%	15.00%	11.10%	8.22%	0.00%
% Absent	1.26%	2.01%	2.39%	2.57%	2.63%	3.13%	3.17%	3.44%	3.51%	3.60%	3.70%	3.75%	3.77%	3.82%	3.84%	4.07%	4.11%	4.19%	4.23%	4.28%	4.28%	4.33%	4.34%	4.35%	4.44%	4.44%	4.73%	4.83%	4.89%	4.95%	5.10%	5.12%	5.56%	5.68%	5.69%	5.71%	5.73%	5.82%	5.85%	6.16%	6.17%	6.27%	6.30%	6.78%	6.78%	7.32%	7.43%	10.85%