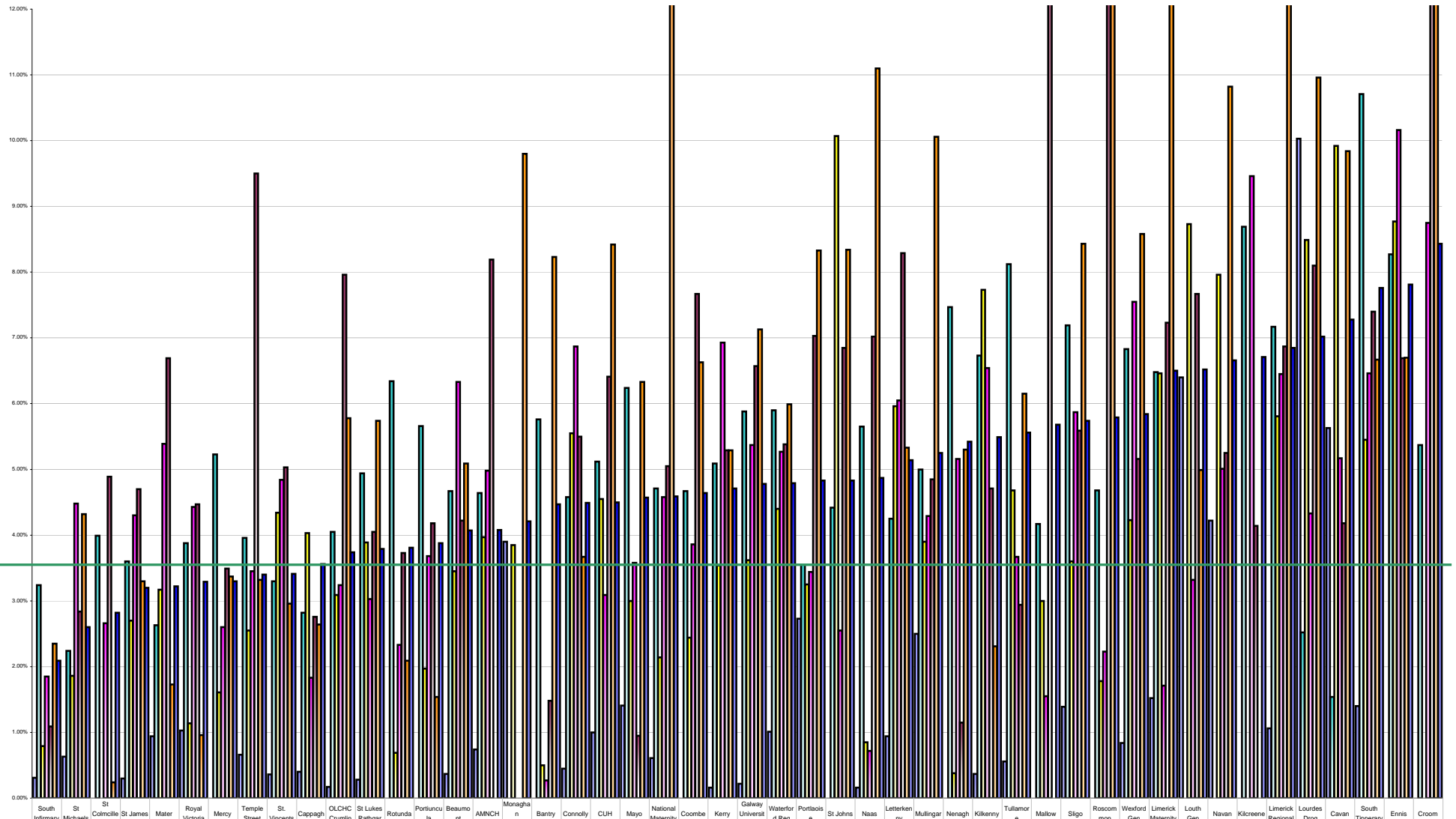


Hospital Absenteeism December January 2014 Per Grade Category



Overall Target 3.5%

	South Infirmary	St Michaels	St Colmcille's	St James	Mater	Royal Victoria	Mercy	Temple Street	St Vincents	Cappagh	OLCHC Crumlin	St Lukes Rathgar	Rotunda	Portlucella	Besomert	AMNCH	Monaghan Hospital	Bantry	Connolly	CUH	Mayo	National Maternity	Coombe	Kerry	Galway University Hosp	Waterford Reg	Portlaoise	St Johns	Naas	Letterkenny	Mullingar	Nenagh	Kilkenny	Tullamore	Mallow	Sligo	Roscommon	Wexford Gen	Limerick Maternity	Louth Gen	Navan	Kilcreene	Limerick Regional	Lourdes Drogh	Cavan	South Tipperary	Ennis	Croom
% Absent Medical Dental	0.31%	0.63%	0.00%	0.30%	0.94%	1.03%	0.00%	0.66%	0.36%	0.40%	0.17%	0.28%	0.00%	0.00%	0.37%	0.74%	3.90%	0.00%	0.45%	1.00%	1.41%	0.61%	0.00%	0.16%	0.22%	1.01%	2.73%	0.00%	0.16%	0.94%	2.50%	0.00%	0.37%	0.56%	0.00%	1.39%	0.00%	0.84%	1.52%	6.40%	4.22%	0.00%	1.06%	10.03%	5.63%	1.40%	0.00%	0.00%
% Absent Nursing	3.24%	2.24%	3.99%	3.60%	2.63%	3.88%	5.23%	3.96%	3.30%	2.82%	4.05%	4.94%	6.34%	5.66%	4.67%	4.64%	0.00%	5.76%	4.58%	5.12%	6.24%	4.71%	4.67%	5.09%	5.88%	5.90%	3.55%	4.42%	5.65%	4.25%	5.00%	7.47%	6.73%	8.12%	4.17%	7.19%	4.68%	6.83%	6.48%	0.00%	0.00%	8.69%	7.17%	2.52%	1.54%	10.71%	8.27%	5.37%
% Absent Health & Social Care Professionals	0.79%	1.86%	0.00%	2.70%	3.17%	1.14%	1.61%	2.55%	4.34%	4.03%	3.09%	3.89%	0.69%	1.97%	3.45%	3.97%	3.85%	0.50%	5.55%	4.55%	3.00%	2.14%	2.44%	3.54%	3.62%	4.40%	3.25%	10.07%	0.85%	5.96%	3.90%	0.38%	7.73%	4.68%	3.00%	3.60%	1.78%	4.23%	6.46%	8.73%	7.96%	0.00%	5.81%	8.49%	9.92%	5.45%	8.77%	0.00%
% Absent Management Admin	1.85%	4.48%	2.66%	4.30%	5.39%	4.43%	2.60%	3.45%	4.84%	1.83%	3.24%	3.03%	2.33%	3.68%	6.33%	4.98%	0.00%	0.27%	6.87%	3.09%	3.58%	4.58%	3.86%	6.93%	5.37%	5.27%	3.44%	2.55%	0.72%	6.05%	4.29%	5.16%	6.54%	3.67%	1.55%	5.87%	2.23%	7.55%	1.71%	3.32%	5.01%	9.46%	6.45%	4.33%	5.17%	6.46%	10.16%	8.75%
% Absent General Support Staff	1.09%	2.84%	4.89%	4.70%	6.69%	4.47%	3.49%	9.50%	5.03%	2.76%	7.96%	4.05%	3.73%	4.18%	4.22%	8.19%	0.00%	1.48%	5.50%	6.41%	0.95%	5.05%	7.67%	6.57%	5.38%	7.03%	6.85%	7.02%	8.29%	4.85%	1.15%	4.71%	2.94%	15.02%	5.59%	13.14%	5.16%	7.23%	7.67%	5.25%	4.14%	6.87%	8.10%	4.18%	7.40%	6.69%	18.54%	
% Absent Other Patient & Client Care	2.35%	4.32%	0.24%	3.30%	1.73%	0.96%	3.37%	3.32%	2.96%	2.64%	5.78%	5.74%	2.09%	1.54%	5.09%	0.00%	9.80%	8.23%	3.67%	8.42%	6.33%	17.79%	6.63%	5.29%	7.13%	5.99%	8.33%	8.34%	11.10%	5.33%	10.06%	5.30%	2.31%	6.15%	0.00%	8.43%	14.81%	8.58%	12.53%	4.99%	10.82%	0.00%	13.82%	10.96%	9.84%	6.67%	6.70%	14.07%
% Absent	2.09%	2.60%	2.82%	3.20%	3.22%	3.29%	3.30%	3.40%	3.41%	3.56%	3.74%	3.79%	3.81%	3.88%	4.07%	4.08%	4.21%	4.47%	4.49%	4.50%	4.57%	4.59%	4.64%	4.71%	4.78%	4.79%	4.83%	4.83%	4.87%	5.14%	5.25%	5.42%	5.49%	5.56%	5.68%	5.74%	5.79%	5.84%	6.50%	6.52%	6.66%	6.71%	6.85%	7.02%	7.28%	7.76%	7.81%	8.43%