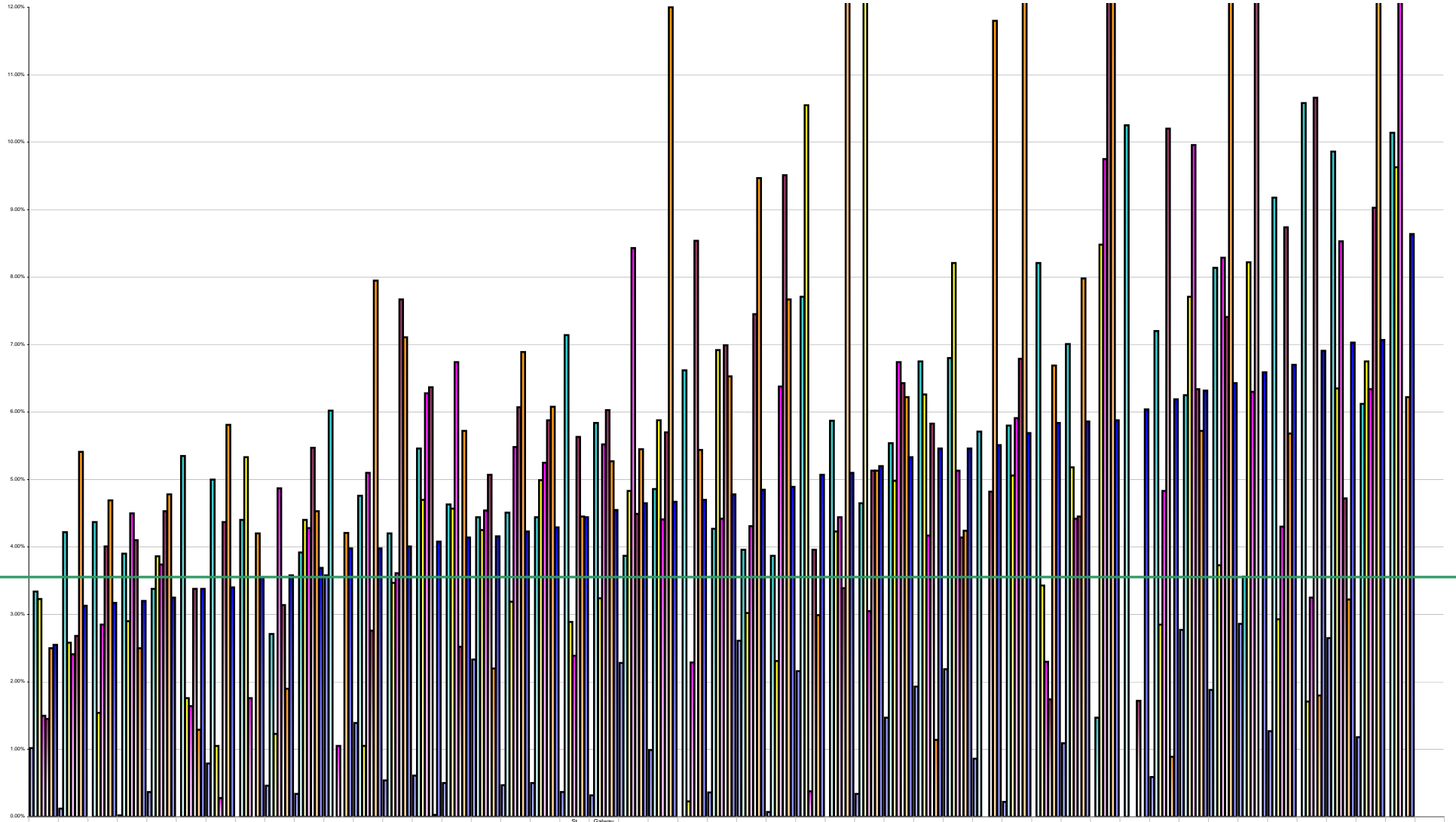


Hospital Absenteeism December February 2014 Per Grade Category



Overall Target 3.5%

	Mayo	South Infirmary	Mercy	St James	St Vincents	Rotunda	Nass	Monaghan Hospital	Cappagh	Temple Street	Bansry	St Michaels	OLCHC Crumlin	AMNCH	Connolly	St Lukes Rathgar	Beaumont	CUH	St Colmcille's	Gateway University Hosp	Royal Victoria	Waterford Reg	Portlucan	Letterkenry	Mullingar	Coombe	St Johns	National Maternity	Kerry	Sligo	Kilkenny	Tullamore	Limerick Maternity	Wexford Gen	Nenagh	Navan	Croom	Kilcreene	Roscommon	Portlaoise	Lourdes Drogh	Mallo	South Tipperary	Louth Gen	Cavan	Limerick Regional	Ennis	Mater
Absenteeism - Medical /Dental	1.02%	0.12%	0.00%	0.02%	0.37%	0.00%	0.79%	0.00%	0.46%	0.34%	3.98%	1.39%	0.54%	0.61%	0.50%	2.33%	0.47%	0.50%	0.37%	0.32%	2.28%	0.99%	0.00%	0.36%	2.61%	0.07%	2.16%	0.00%	0.34%	1.47%	1.93%	2.19%	0.86%	0.22%	0.00%	1.09%	0.00%	0.00%	0.59%	2.77%	1.88%	2.86%	1.27%	0.00%	2.65%	1.18%	0.00%	
Absenteeism - Nursing	3.34%	4.22%	4.37%	3.90%	3.38%	5.35%	5.00%	4.40%	2.71%	3.92%	6.02%	4.76%	4.20%	5.46%	4.63%	4.44%	4.51%	4.44%	7.14%	5.84%	3.87%	4.86%	6.62%	4.27%	3.96%	3.87%	7.71%	5.87%	4.65%	5.54%	6.76%	6.80%	5.71%	5.80%	8.21%	7.01%	1.47%	10.25%	7.20%	6.25%	8.14%	3.56%	9.18%	10.58%	9.86%	6.12%	10.14%	
Absenteeism - Health & Social Care Professionals	3.23%	2.58%	1.54%	2.90%	3.86%	1.76%	1.05%	5.33%	1.23%	4.40%	0.00%	1.05%	3.47%	4.70%	4.57%	4.25%	3.19%	4.99%	2.89%	3.24%	4.83%	5.88%	0.23%	6.92%	3.02%	2.31%	10.55%	4.23%	16.71%	4.98%	6.26%	8.21%	0.00%	5.06%	3.43%	5.18%	8.48%	0.00%	2.85%	7.71%	3.73%	8.22%	2.93%	1.71%	6.35%	6.75%	9.63%	
Absenteeism - Management Admin	1.50%	2.41%	2.85%	4.50%	3.74%	1.64%	0.28%	1.76%	4.87%	4.28%	1.05%	5.10%	3.61%	6.28%	6.74%	4.54%	5.48%	5.25%	2.39%	5.52%	8.43%	4.41%	2.29%	4.42%	4.31%	6.38%	0.38%	4.44%	3.05%	6.74%	4.17%	5.13%	0.00%	5.91%	2.30%	4.42%	9.75%	0.00%	4.83%	9.96%	8.29%	6.30%	4.30%	3.25%	8.53%	6.34%	12.44%	
Absenteeism - General Support Staff	1.45%	2.68%	4.01%	4.10%	4.53%	3.38%	4.37%	0.00%	3.14%	5.47%	0.00%	2.76%	7.67%	6.37%	2.52%	5.07%	6.07%	5.88%	5.63%	6.03%	4.49%	5.70%	8.54%	6.99%	7.45%	9.51%	3.96%	3.39%	5.13%	6.43%	5.83%	4.14%	4.82%	6.79%	1.74%	4.45%	13.07%	1.72%	10.20%	6.34%	7.41%	13.88%	8.74%	10.66%	4.72%	9.03%	0.00%	
Absenteeism - Other Patient & Client Care	2.50%	5.41%	4.69%	2.50%	4.78%	1.29%	5.81%	4.20%	1.90%	4.53%	4.21%	7.95%	7.11%	0.03%	5.72%	2.20%	6.89%	6.08%	4.45%	5.27%	5.45%	12.00%	5.44%	6.53%	9.47%	7.67%	2.99%	21.36%	5.13%	6.22%	1.14%	4.24%	11.80%	14.43%	6.69%	7.98%	12.80%	0.00%	0.89%	5.72%	12.81%	0.00%	5.68%	1.80%	3.22%	17.06%	6.22%	
Absenteeism - Overall	2.55%	3.13%	3.17%	3.20%	3.25%	3.38%	3.40%	3.55%	3.58%	3.69%	3.98%	3.98%	4.01%	4.08%	4.14%	4.16%	4.23%	4.29%	4.44%	4.55%	4.65%	4.67%	4.70%	4.78%	4.86%	4.89%	5.07%	5.10%	5.20%	5.33%	5.46%	5.46%	5.51%	5.69%	5.84%	5.88%	5.88%	6.04%	6.19%	6.32%	6.43%	6.59%	6.70%	6.91%	7.03%	7.07%	8.64%	