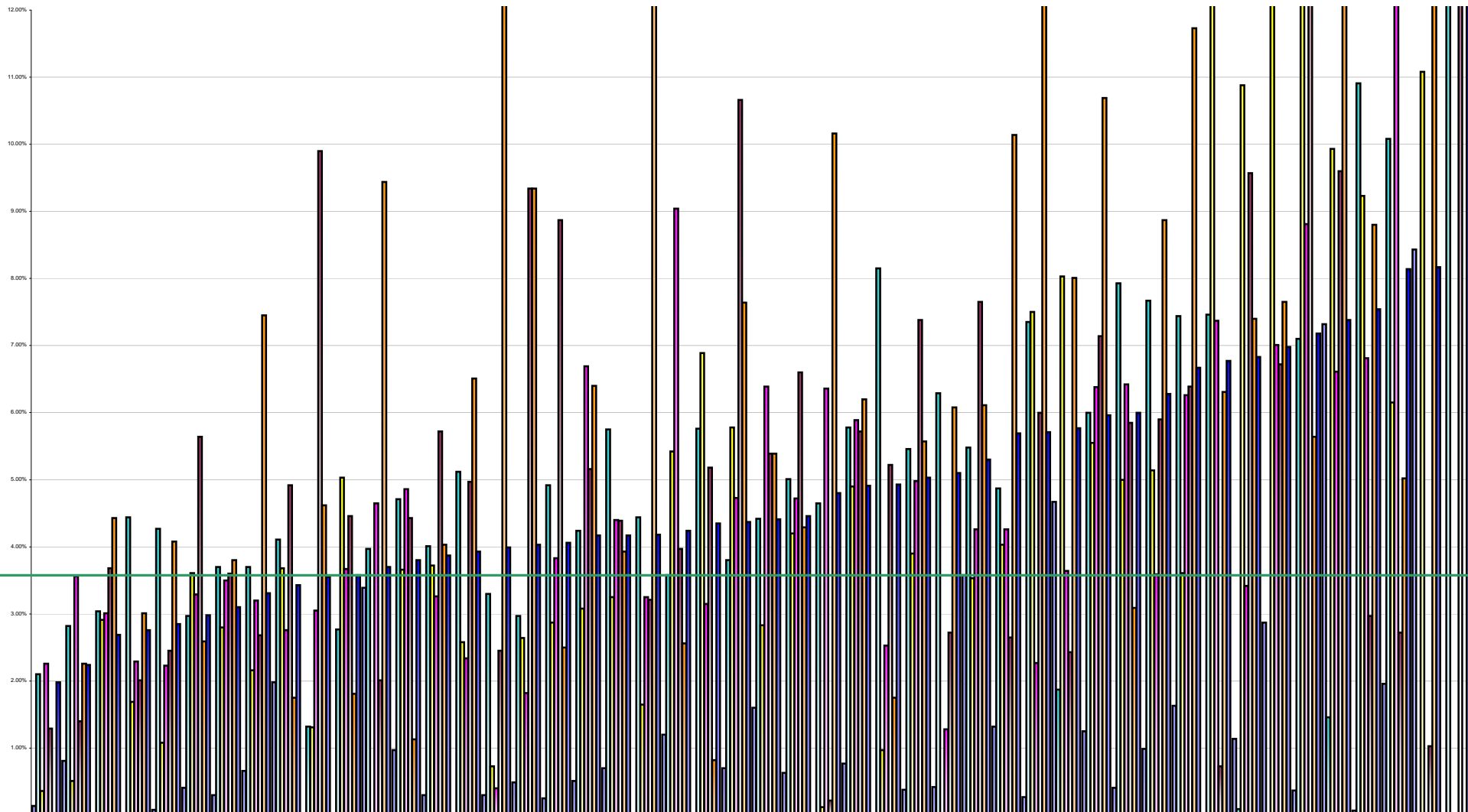


Hospital Absenteeism December 2013 Per Grade Category



Overall Target 3.5%

	Cappagh	St Michaels	St Vincents	Mercy	South Intrimary	Mater	St James	Mayo	St Colmcille's	Roscommon	St Lukes Raigar	Royal Victoria	AMNCH	Coombe	Portlucella	Naas	Mallow	QLCHC Crumlin	Beaumont	Galway University Hosp	National Maternity	Connolly	St Johns	Temple Street	Kerry	CUH	Bantry	Waterford Reg	Rotunda	Letterkenry	Limerick Maternity	Sligo	Portlaoise	Kilkenny	Cavan	Limerick Regional	Westford Gen	Tullamore	Mullingar	Nenagh	Navan	Louth Gen	Croom	Lourdes Drogh	South Tipperary	Ennis	Monaghan Hospital	Kilcreene
% Absent Medical Dental	0.14%	0.81%	0.00%	0.00%	0.08%	0.41%	0.30%	0.66%	1.98%	0.00%	0.00%	3.39%	0.97%	0.30%	0.00%	0.30%	0.49%	0.25%	0.51%	0.70%	0.00%	1.20%	0.00%	0.70%	1.60%	0.63%	0.00%	0.77%	0.00%	0.38%	0.42%	3.58%	1.32%	0.27%	4.67%	1.25%	0.41%	0.99%	1.63%	0.00%	1.14%	2.87%	0.37%	7.32%	0.07%	1.96%	8.43%	0.00%
% Absent Nursing	2.10%	2.82%	3.04%	4.44%	4.27%	2.97%	3.70%	3.70%	4.11%	1.32%	2.77%	3.97%	4.71%	4.01%	5.12%	3.30%	2.97%	4.92%	4.24%	5.75%	4.44%	3.58%	5.76%	3.80%	4.42%	5.01%	4.65%	5.78%	8.15%	5.46%	6.29%	5.48%	4.87%	7.35%	1.87%	6.00%	7.93%	7.67%	7.44%	7.46%	0.09%	0.00%	7.10%	1.46%	10.91%	10.08%	0.00%	15.84%
% Absent Health & Social Care Professionals	0.36%	0.51%	2.91%	1.69%	1.08%	3.61%	2.80%	2.16%	3.68%	1.31%	5.03%	0.00%	3.66%	3.72%	2.58%	0.73%	2.64%	2.87%	3.08%	3.25%	1.65%	5.42%	6.89%	5.78%	2.83%	4.20%	0.12%	4.90%	0.97%	3.90%	0.00%	3.53%	4.03%	7.50%	8.03%	5.55%	5.00%	5.14%	3.61%	15.63%	10.88%	12.21%	14.29%	9.93%	9.23%	6.15%	11.08%	0.00%
% Absent Management Admin	2.26%	3.56%	3.01%	2.29%	2.23%	3.29%	3.50%	3.20%	2.76%	3.05%	3.67%	4.65%	4.86%	3.26%	2.34%	0.40%	1.82%	3.83%	6.69%	4.40%	3.25%	9.04%	3.15%	4.73%	6.39%	4.72%	6.36%	5.89%	2.53%	4.98%	1.28%	4.26%	4.26%	2.27%	3.64%	6.38%	6.42%	3.59%	6.26%	7.37%	3.42%	7.01%	8.81%	6.61%	6.81%	12.55%	0.00%	0.00%
% Absent General Support Staff	1.29%	1.40%	3.68%	2.01%	2.45%	5.64%	3.60%	2.68%	4.92%	9.90%	4.46%	2.01%	4.43%	5.72%	4.97%	2.45%	9.34%	8.87%	5.16%	4.39%	3.21%	3.97%	5.18%	10.66%	5.39%	6.60%	0.22%	5.72%	5.22%	7.38%	2.72%	7.65%	2.65%	6.00%	2.43%	7.14%	5.85%	5.90%	6.39%	0.73%	9.57%	6.72%	18.78%	9.60%	2.97%	2.72%	1.03%	15.54%
% Absent Other Patient & Client Care	0.00%	2.26%	4.43%	3.01%	4.08%	2.59%	3.80%	7.45%	1.75%	4.62%	1.81%	9.44%	1.13%	4.03%	6.51%	12.60%	9.34%	2.50%	6.40%	3.93%	26.09%	2.56%	0.82%	7.64%	5.39%	4.29%	10.16%	6.20%	1.75%	5.57%	6.08%	6.11%	10.14%	12.47%	8.01%	10.69%	3.09%	8.87%	11.73%	6.31%	7.40%	7.65%	5.64%	15.08%	8.80%	5.02%	12.31%	0.00%
% Absent	1.98%	2.24%	2.69%	2.76%	2.85%	2.98%	3.10%	3.31%	3.43%	3.55%	3.58%	3.70%	3.80%	3.87%	3.93%	3.99%	4.03%	4.06%	4.17%	4.17%	4.18%	4.24%	4.35%	4.37%	4.41%	4.46%	4.80%	4.91%	4.93%	5.03%	5.10%	5.30%	5.69%	5.71%	5.77%	5.96%	6.00%	6.28%	6.67%	6.77%	6.83%	6.98%	7.18%	7.38%	7.54%	8.14%	8.17%	13.41%