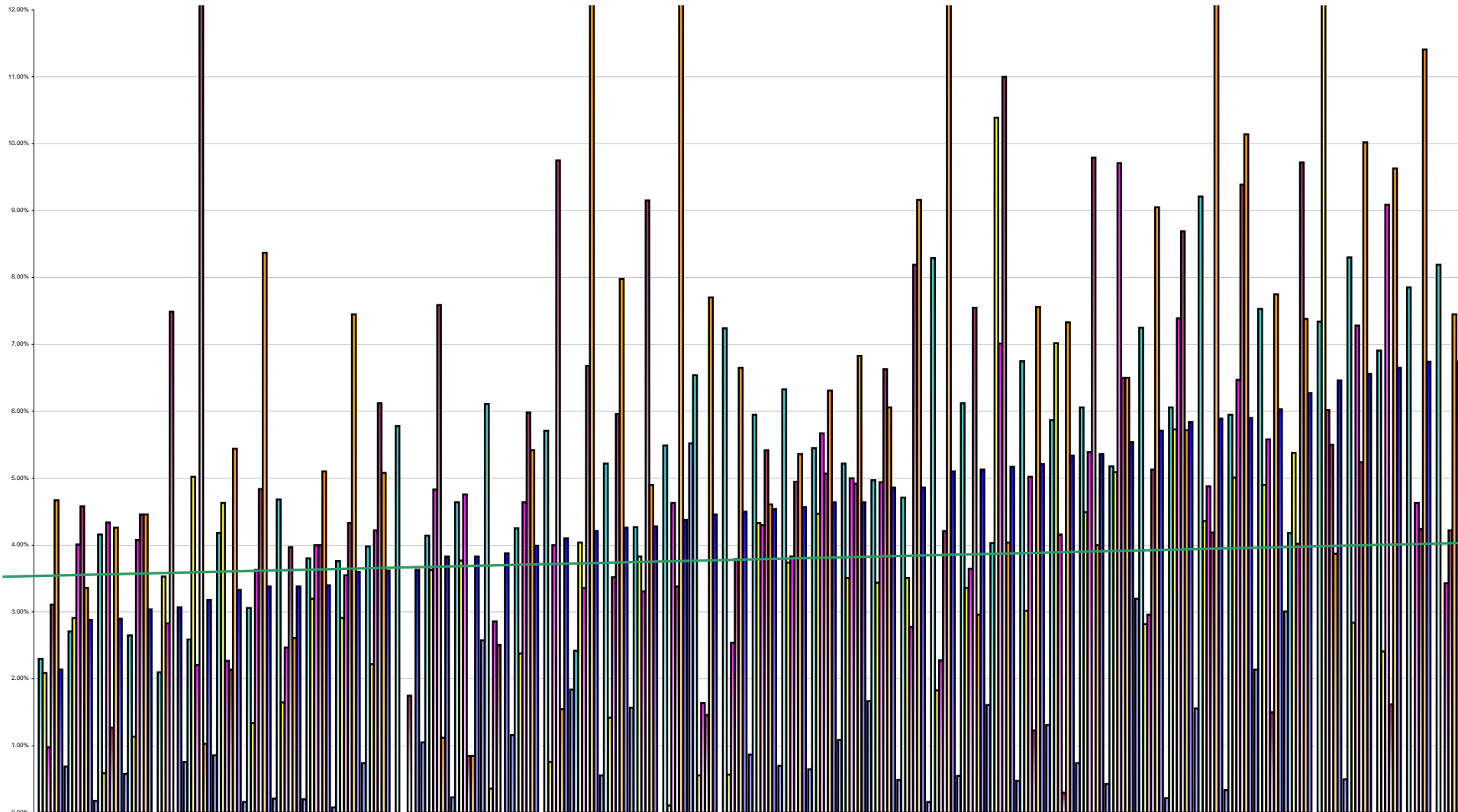


Hospital Absenteeism April 2013 Per Grade Category



Overall Target 3.5%

	St. Michael's	St. Vincent's	Mercy University	Mallow General Hospital	Cappagh National	Monaghan General	Connolly Hospital	Coombe Women & Infants Hospital	The Rotunda Hospital	St. James's Hospital	South Infirmary Victoria	Mater Misericordiae	Lourdes Orthopaedic	Children's University	AMNCH	Royal Victoria Eye & Hospital	Beaumont Hospital	St. Columcille's	St. Luke's Hospital	Mayo General Hospital	Our Lady's Children	National Maternity	St. John's Hospital	Portlucula Hospital	Galway University	Galway Roscommon	Cork University	Wexford General Hospital	Letterkenny General	Naas General Hospital	Roscommon County	St. Luke's General	Mid-Western Regional	Our Lady's Hospital	Midland Regional	Waterford Regional	Kerry General Hospital	Midland Regional	Sligo Regional	Our Lady of Lourdes	Mid-Western Regional	Midland Regional	Louth County Hospital	South Tipperary	Cavan General Hospital	Mid-Western Regional	Bantry General Hospital	Mid-Western Regional
% Absent Medical Dental	0.00%	0.69%	0.18%	0.58%	0.00%	0.76%	0.86%	0.16%	0.21%	0.20%	0.08%	0.74%	0.00%	1.05%	0.23%	2.58%	1.16%	0.00%	1.84%	0.56%	1.57%	0.00%	5.52%	0.00%	0.87%	0.70%	0.65%	1.09%	1.67%	0.49%	0.16%	0.55%	1.61%	0.48%	1.31%	0.74%	0.43%	3.20%	0.22%	1.56%	0.34%	2.14%	3.01%	0.00%	0.50%	0.00%	0.00%	0.00%
% Absent Nursing	2.30%	2.71%	4.16%	2.65%	2.10%	2.59%	4.18%	3.06%	4.68%	3.80%	3.76%	3.98%	5.78%	4.14%	4.64%	6.11%	4.25%	5.71%	2.42%	5.22%	4.27%	5.49%	6.54%	7.24%	5.95%	6.33%	5.45%	5.22%	4.97%	4.71%	8.29%	6.12%	4.03%	6.75%	5.87%	6.06%	5.18%	7.25%	6.06%	9.21%	5.95%	7.53%	4.18%	7.34%	8.30%	6.91%	7.85%	8.19%
% Absent Health & Social Care Professionals	2.09%	2.91%	0.59%	1.14%	3.53%	5.02%	4.63%	1.34%	1.65%	3.20%	2.91%	2.22%	0.00%	3.63%	3.77%	0.36%	2.38%	0.76%	4.04%	1.42%	3.83%	0.11%	0.56%	0.57%	4.33%	3.74%	4.47%	3.51%	3.44%	3.51%	1.83%	3.36%	10.39%	3.02%	7.02%	4.49%	5.09%	2.82%	5.73%	4.36%	5.01%	4.90%	5.38%	15.48%	2.84%	2.41%	0.00%	0.00%
% Absent Management Admin	0.98%	4.01%	4.34%	4.08%	2.83%	2.21%	2.27%	3.63%	2.47%	4.00%	3.55%	4.22%	0.00%	4.83%	4.76%	2.86%	4.64%	4.00%	3.36%	3.52%	3.31%	4.63%	1.64%	2.54%	4.30%	3.83%	5.67%	5.00%	4.94%	2.78%	2.28%	3.65%	7.01%	5.02%	4.16%	5.39%	9.71%	2.96%	7.39%	4.88%	6.47%	5.58%	4.02%	6.02%	7.28%	9.09%	4.63%	3.43%
% Absent General Support Staff	3.11%	4.58%	1.27%	4.46%	7.49%	13.59%	2.14%	4.84%	3.97%	4.00%	4.33%	6.12%	1.75%	7.59%	0.85%	2.51%	5.98%	9.75%	6.68%	5.96%	9.15%	3.38%	1.46%	3.79%	5.42%	4.95%	5.07%	4.92%	6.63%	8.19%	4.21%	7.55%	11.00%	1.23%	0.30%	9.79%	6.50%	5.13%	8.69%	4.19%	9.39%	1.50%	9.72%	5.50%	5.24%	1.62%	4.24%	4.22%
% Absent Other Patient & Client Care	4.67%	3.36%	4.26%	4.46%	0.00%	1.03%	5.44%	8.37%	2.61%	5.10%	7.45%	5.08%	0.00%	1.12%	0.85%	0.00%	5.42%	1.55%	12.41%	7.98%	4.90%	12.15%	7.70%	6.65%	4.61%	5.36%	6.31%	6.83%	6.06%	9.16%	14.43%	2.96%	4.04%	7.56%	7.33%	4.00%	6.50%	9.05%	5.72%	12.84%	10.14%	7.75%	7.38%	3.87%	10.02%	9.63%	11.41%	7.45%
% Absent	2.14%	2.88%	2.90%	3.04%	3.07%	3.18%	3.33%	3.38%	3.38%	3.40%	3.60%	3.62%	3.63%	3.83%	3.83%	3.88%	3.99%	4.10%	4.21%	4.26%	4.28%	4.38%	4.46%	4.50%	4.54%	4.57%	4.64%	4.64%	4.86%	4.86%	5.10%	5.13%	5.17%	5.21%	5.34%	5.36%	5.54%	5.71%	5.84%	5.89%	5.90%	6.03%	6.27%	6.46%	6.56%	6.65%	6.74%	6.74%