



Rialtas na
hÉireann
Government
of Ireland

Tionscadal Éireann
Project Ireland
2040



Capital Plan 2025

Building and Equipment

FOREWORD

Healthcare is an important part of Project Ireland 2040, the Government’s long term, overarching strategy. Investment in healthcare infrastructure is a key enabler to make Ireland a better country for all and to build a more resilient and sustainable future. Project Ireland 2040 combines the National Planning Framework (the vision and strategy) and the National Development Plan (the investment).

The Capital Plan, funded from the NDP, provides significant public investment in health infrastructure to meet current need, to cater for an estimated population growth of one million people and to respond to the changing demographic profile in Ireland. It also supports the vision of high quality, safe, accessible and sustainable healthcare, enabled by capital funding.

In 2025, investment in healthcare infrastructure, equipment and furnishing of healthcare facilities is €1.357bn from all funding sources. *



The 2025 HSE Capital Plan is focused on improving the experience of patients, staff and everyone who engages with the HSE. Modern infrastructure and equipment are a crucial component in the provision of a safe and quality health service, a contributor to a positive patient experience and to staff wellbeing.

The funding allocated for 2025 will progress and deliver a range of community and acute projects across the country. This investment will support the model of integrated care, the delivery of *Sláintecare*, pathways to universal healthcare and provide increased capacity in the health system. A significant allocation of funding continues to be made available to prioritise patient safety and deal with risk. This includes the replacement of medical equipment, ambulance replacement programmes and infrastructure upgrades.

*Department of Health investment in infrastructure, equipment and furnishing of health facilities in 2025 is €1.250bn and €80m from other sources. Department of Children, Equality, Disability, Integration and Youth investment in specialist disability health projects in 2025 is €27m. Refer to Tables 3.a.i and 3.a.ii on page 12.

TABLE OF CONTENTS

OVERVIEW	4
SECTION 1 – Introduction	6
SECTION 2 – Review of Capital Plan 2024	11
SECTION 3 – Capital Plan 2025.....	12
SECTION 4 – Women’s and Children’s Health	17
SECTION 5 – Community Services	19
SECTION 6 – Disability Services	22
SECTION 7 – Cross Care Service Areas.....	24
SECTION 8 – Acute Hospital Services	31
SECTION 9 – Social Accountability	37
SECTION 10 – Enablers.....	39
APPENDICES	41

OVERVIEW

The annual Capital Plan is prepared by HSE Capital and Estates in conjunction with operational services, taking account of contractual commitments, investment priorities and available funding. In 2025, the total investment in healthcare infrastructure, equipment and furnishing of health facilities from all funding sources is €1.357bn.¹ This funding is managed to achieve value for money in accordance with the Department of Health, Strategic Healthcare Investment Framework (SHIF) and the Common Appraisal Framework (CAF)², aligned to the Department of Public Expenditure NDP Delivery and Reform, Infrastructure Guidelines and the Capital Projects Manual and Approvals Protocol of the HSE.

The Capital Plan, derived from the Programme for Government, aligns with the strategic priorities of the Minister for Health, Department of Health and the HSE. In addition to the capital allocation received, Capital and Estates also manage funding from a revenue stream to maintain and expand the existing healthcare estate and provide infrastructure for services to deliver increased community and primary care capacity.

The overarching objective of the HSE in 2025 is the advancement of all contractually committed projects, regulatory requirements, progressing developments to support patient access and capacity, and addressing known compliance and risk associated with healthcare infrastructure. There is also a focus on the longer-term modernisation of the healthcare estate, aligned to population and service needs, linked to Government commitments to achieve net zero carbon by 2050.

An innovative and progressive approach to capital infrastructure delivery, in the development of new facilities and modernisation of existing buildings, will continue. Future planning is enabled by promoting a balanced and strategic approach to investment, in line with the SHIF. In addition, the HSE Infrastructure Decarbonisation Strategy and Implementation Roadmap has been reviewed and is progressing in partnership with the Sustainable Energy Authority of Ireland. This will make the HSE more energy efficient and sustainable, to meet Government climate action targets.

Capital Plan 2025 supports the construction of Government priority projects including the New Children's Hospital, advancement of the National Maternity Hospital and progression of other key initiatives consistent with universal healthcare. Funding is provided for specific priority programmes including critical care, surgical hubs, local injury units, urgent emergency care, elective hospitals, specialist disability services, enhanced community care, primary care, ambulance bases, older persons and the multi-annual mental health capital plan, currently in preparation. Significant investment is made in the Acute Inpatient Bed Capacity Expansion Plan, prioritising patient safety, with developments at varying stages of delivery and a pipeline of additional projects in progress or at design stage. Managing and mitigating clinical and infrastructural risk are fundamental to safe and quality healthcare, and so investment in minor capital initiatives, the equipment replacement programme and the ambulance replacement programme is increased. Funding is provided to meet social accountabilities in the delivery of the Climate Action Roadmap. Additional revenue funding is also provided for technical and support resources to enable delivery of the expanding Capital Plan.

¹ Department of Health investment in infrastructure, equipment and furnishing of health facilities in 2025 is €1.250bn. An additional €80m in HSE income (proceeds from insurance claims, funding contributions to individual projects, sale of assets etc.), is also provided. Department of Children, Equality, Disability, Integration and Youth investment in specialist disability health projects in 2025 is €27m. This is a total investment of €1.357bn. Refer to Tables 3.a.i and 3.a.ii on page 12.

² The Common Appraisal Framework is a sectoral framework being developed as part of the Strategic Healthcare Investment Framework for the appraisal of investment in healthcare projects in accordance with the Infrastructure Guidelines.



Aerial View of New Children's Hospital, St. James's Hospital Campus, Dublin

Maintaining effective oversight and management of the Capital Plan is critical to ensuring delivery of prioritised projects. Challenges associated with securing skilled resources for projects, external factors such as global supply challenges within the construction sector, and contractor capacity, continue to be monitored. In addition, the Department of Health developed Common Appraisal Framework, which will go live in 2025. In conjunction with the Department of Health and the Department of Children, Equality, Disability, Integration and Youth, the HSE also continues to explore innovative and progressive approaches for the delivery of the Capital Programme.

The objective of the HSE Capital Programme is the provision of safe, secure and high-quality infrastructure to play a key role in improving the experience and outcomes for patients, service users and staff. Delivering on this aim, while achieving value for money and compliance is the primary goal of Capital Plan 2025.

SECTION 1 – Introduction

This section of the Plan outlines the strategic context in which Capital Plan 2025 has been prepared, reflecting significant organisational priorities and operational factors, including the establishment of the six new Health Regions. It also takes account of *Sláintecare*, the *Strategic Healthcare Investment Framework (SHIF)* and the *Government Climate Action Plan 2024*, the *HSE Corporate Plan 2021-2024* and the *HSE Corporate Plan 2025-2027* currently in development. The content of this Plan is also informed by engagement and discussion with the Department of Health and the Department of Children, Equality, Disability, Integration and Youth.

STRATEGIC CONTEXT

National Planning Framework: The National Planning Framework guides high-level strategic planning and development for the country, and seeks to ensure that as the population grows, facilities and infrastructure are in place to meet that growth. The National Planning Framework, alongside the National Development Plan, is together, one plan, guiding strategic development and infrastructure investment at national level. The vision, set out under the Framework will ensure Ireland’s long-term social progress for all parts of the country, and is consistent with projections for a one million increase in population by 2040. It draws upon lessons learned from the National Spatial Strategy and highlights a vision of success based on better choices compared to a ‘business as usual’ approach.

Universal Healthcare and Sláintecare: The overarching vision and long-term policy direction for Ireland’s healthcare system is the achievement of universal healthcare established by Government policy. The Implementation Strategy identifies capital investment as a critical enabler of the reform proposed in *Sláintecare*, acting as a catalyst for implementation of a revised model of care and modernised approach to service delivery. A major principle of *Sláintecare* is the achievement of best health outcomes and value for money, by re-orienting the model of care towards primary and community care, meeting the majority of population health needs through an integrated system, delivered locally.

Department of Health – Strategic Healthcare Investment Framework and Common Appraisal Framework:

The DoH Strategic Healthcare Investment Framework (SHIF) provides a high-level framework, which supports capital investment decision-making and guides the development of health infrastructure throughout the country. The development and implementation of the SHIF will enhance assessment and pace of delivery and is targeted toward satisfying an identified need. It is evidence-informed, equitable, enabling reform to be achieved, with the overall objective of having better health outcomes for the population of Ireland. The SHIF uses a four-option intervention hierarchy, is grounded in the principle of the Continuum of Care (the *Sláintecare* vision) and contains six investment criteria.

The Intervention Hierarchy and the Investment Criteria are informed by the Irish Government Economic and Evaluation Service, Health Spending Reviews. The Continuum of Care is based on the principles of *Sláintecare/Universal Healthcare*

The Common Appraisal Framework (CAF) provides a common, clear and proportionate approach to the appraisal of healthcare capital proposals, from initial concept to the handover of the facility to the service. It sets out the approach for the appraisal of proposed healthcare capital investments (including alignment with the SHIF), with proportionate arrangements for the application of the Infrastructure Guidelines. The CAF will be live in 2025, and fully implemented during the life of this Capital Plan.

Figure 1.a. Department of Health SHIF Intervention Hierarchy

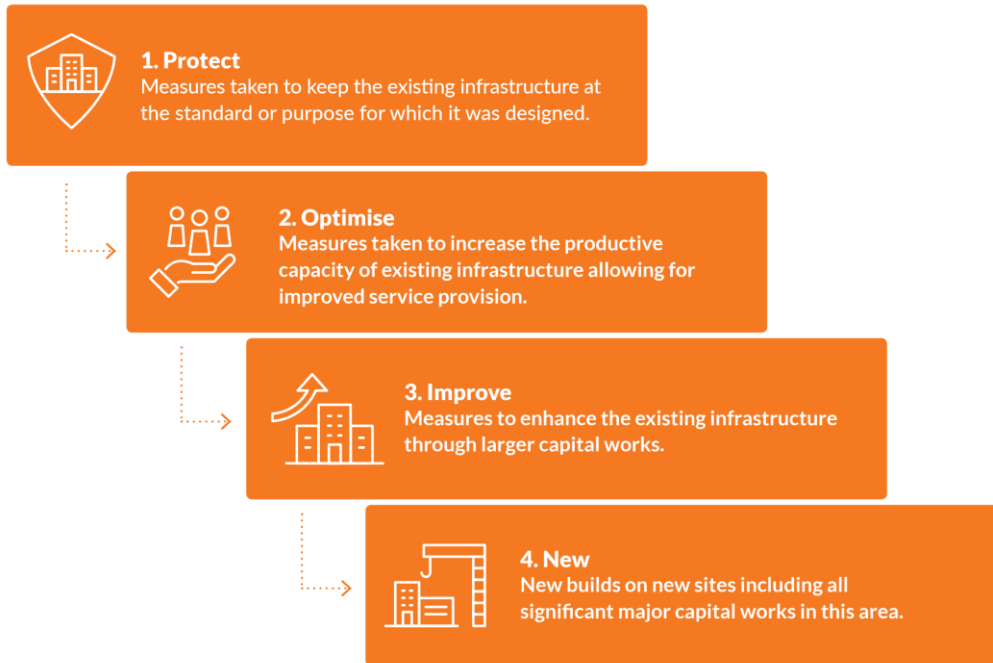
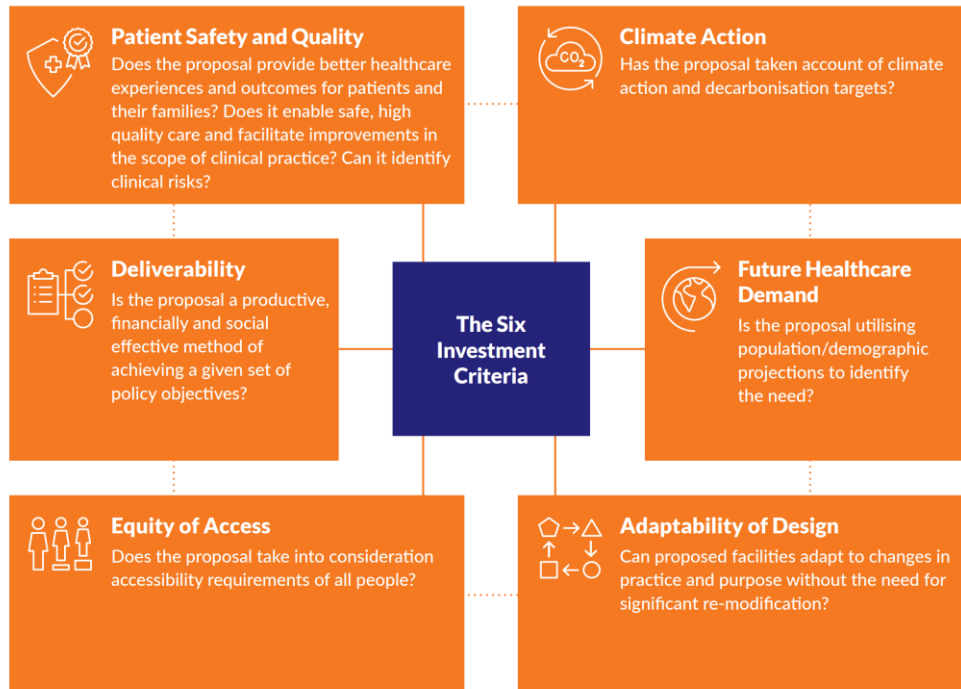


Figure 1.b. Department of Health SHIF Continuum of Care



Figure 1.c. Department of Health SHIF Investment Criteria



HSE Corporate Plan: The HSE Corporate Plan for the period 2021-2024 sets out a vision and strategy for service delivery and outlines the aims of the organisation for the period. The transformation described in the Corporate Plan focuses on the goal of Universal Healthcare; to provide affordable and timely access to high-quality healthcare for all. The Plan is focused on supporting all service users to live well and feel connected to their communities, accessing the right care, at the right time and in the right place, safely and effectively. The next Corporate Plan (2025-2027), is currently in development, continuing an ambitious commitment over the 3 years towards achieving this goal. These commitments are consistent with the core principles of universal healthcare and are informed by the corporate risk register. The creation of six Health Regions and twenty Integrated Health Areas, as envisaged in *Sláintecare*, holds significant potential to transform our health services, marking an organisational reset since the formation of the HSE 20 years ago.

Prioritising the health and wellbeing of our communities, helping people to stay well for longer, with a particular focus on the most vulnerable in society, requires delivery of safe and effective services informed by, and designed to meet the needs and preferences of patients and services users. Improving access, by delivering targeted initiatives and expanding healthcare capacity, including, additional community and hospital beds, elective facilities, trauma units, enterprise Wi-Fi to enable the digitalisation of health services and the New Children’s Hospital are all central to achieving this goal.

HSE National Service Plan: The HSE National Service Plan (NSP) 2025, will be the realisation of the first year of the strategic Corporate Plan 2025-2027, currently in development. The Corporate Plan and the National Service Plan are being prepared to reflect public need as well as the broader trends and environmental factors that will influence service delivery. The HSE budget has increased over recent years, reflecting the growing demand for services and the

investment necessary for reform. The focus is on accelerating access, providing care closer to home and building an infrastructure for the future.

The needs of the population are increasing, alongside increased expectations for person-centred and timely services. Delivering maximum value, with renewed attention and effort on efficiency, to ensure service users and carers, staff and teams and the system as a whole benefit. The NSP aligns with the *Programme for Government: Our Shared Future, Partnership Principles* and *Sláintecare*.

HSE Capital and Estates Strategy: The HSE Capital and Estates Strategy focuses on an innovative and progressive approach to capital infrastructure planning. The Strategy adopts a strategic long-term view of investment decisions to 2050, incorporating rolling 5-year interim review cycles. It supports the modernisation and optimum utilisation of existing infrastructure by creating opportunities to maximise assets, generate efficiencies, develop synergies, and produce improvements as necessary, or develop new facilities where required. In line with the Department of Health, Strategic Healthcare Investment Framework, the Strategy will also support a balanced and regional approach to future investment, by promoting a strategic methodology to planning. Delivering on objectives outlined in the Strategy will be achieved by utilising the CAF and the SHIF to deliver common, clear and proportionate assessments of infrastructure proposals.

HSE Climate Action Strategy and Infrastructure Decarbonisation Roadmap: The Government Climate Action Plan 2024 and the Climate Action and Low Carbon Development (Amendment) Act 2021, are aligned with the European Green Deal, establishing European Commission policy initiatives. The overarching aim of this is to make the European Union climate neutral by 2050. The Government Climate Action Plan sets out the energy efficiency and energy related Green House Gas emissions reduction targets, which Public Sector Bodies in Ireland are legally obliged to meet. The HSE as a public body has set out how it will deliver these targets in an Infrastructure Decarbonisation Roadmap, which was revised in 2024. It outlines the work undertaken by the HSE to date and the future approach to reducing carbon emissions from buildings, operationally reducing energy usage and moving to carbon zero energy. The Infrastructure Decarbonisation Roadmap, delivered in conjunction with the Sustainable Energy Authority of Ireland, is integral to Capital and Estates operations, while supporting the wider HSE Climate Action and Sustainability Strategy.

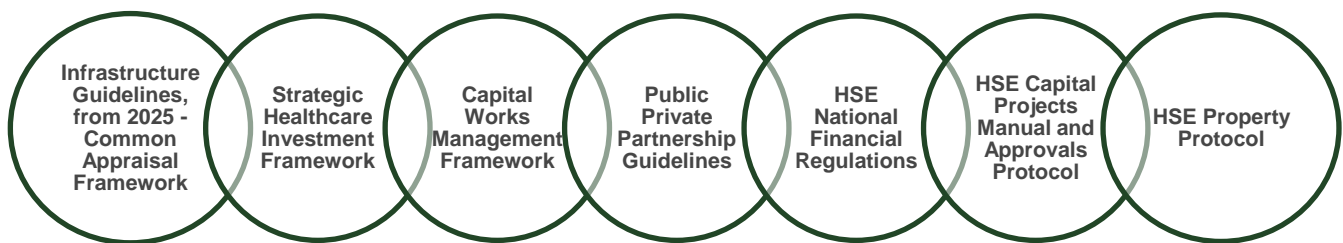
Capital Plan: The Capital Plan reviewed annually derives from the Programme for Government and Ministerial priorities. It is a one-year plan, within the delivery of the HSE Capital Programme. Framed within the context of delivering universal healthcare, the Plan takes account of strategic projects and programmes, as well as recent Ministerial priorities such as surgical hubs, elective hospitals, bed capacity expansion, local injury units, women's health projects and other initiatives. Capital funds, advanced to the HSE each year are for the delivery of core capital infrastructure, equipping and furnishing and are outlined to an approved level of expenditure, under various subheadings, in the annual Letters of Determination.

Capital and Estates has engaged with the Health Infrastructure Division of the Department of Health and the Disability Finance and Reform Unit of the Department Children, Equality, Disability, Integration and Youth, in developing this Capital Plan. This engagement will continue, with ongoing progress reporting on delivery and performance throughout the year. The HSE Board provided approval for the Capital Plan, which was then forwarded to the Minister for Health and Minister for Children, Equality, Disability, Integration and Youth, for review and approval in accordance with the Health Act 2004, as amended by the Health Service Executive (Financial Matters) Act 2014. The delivery of the Capital Plan is primarily the responsibility of the National Director, Capital and Estates, once approval is received, with ongoing progress reporting to the DoH and DCEDIY throughout the year.

Health Regions: The HSE has established six new Health Regions and 20 Integrated Health Areas, as envisaged in *Sláintecare*. Working with local communities, the Health Regions hold significant potential to transform our health services. The Health Regions are the primary accountable and responsible service coordination and delivery units and will provide the governance and organisational arrangements to enable the planning, management and delivery of quality services across the regions.

This Capital Plan has been produced following engagement with the HSE Centre, Regional Executive Officers, current service leads and Capital and Estates. In support of empowered and devolved decision making at a local level, and with the goal of meeting the HSE Centre objectives of planning, enablement, performance and assurance, opportunities were sought for greater involvement of the Regional Executive Officers, in the appraisal and recommending of projects aligned to national priorities, in the formation of this Capital Plan. This is referenced further in Section 3 of this document.

Governance Procedures: Management of the Capital Programme is in accordance with the suite of protocols below.



Project Governance: Heretofore, the HSE National Capital and Property Steering Committee appraised all project submissions, in consultation with Service National Directors and Regional Capital and Estates leads. New governance arrangements are being developed, aligned to the Department of Health, Strategic Healthcare Investment Framework and the Common Appraisal Framework, in line with the Infrastructure Guidelines. Allied to this, a revision of the HSE Capital Projects Manual and Approvals Protocol will be completed in early 2025. This will make sure there is continued governance, compatibility with service priorities and compliance with policies, ensuring alignment with the National Service Plan. The current established protocols governing the appraisal, initiation, management and administration of all capital projects are those referenced above.

SECTION 2 – Review of Capital Plan 2024

The 2024 HSE Capital Plan, was prepared in the context of the expected pressures on services, associated with delivering projects in support of the continuing requirement to increase capacity and improve access to services. Capital and Estates continued to work with all Service groups and the incoming Regional Executive Officers, to respond comprehensively to ongoing challenges and to enable and support service provision during the transitioning environment.

Capital Plan 2024

The capital (vote) allocation for 2024 was €1,159.28m. Subsequently, this was increased to €1,161.80m with the addition of Shared Island funding of €2.50m. See Tables 2.a. (i) and 2.a. (ii) below for breakdown.

Table 2.a. (i) Capital Allocation – Department of Health 2024

Capital Allocation 2024	€m
Original Core Allocation Department of Health	1056.28
Shared Island Funding	2.50
Income	10.00
Brexit Supplementary Funding*	5.46
Approved Carry Over	70.00
Total Available Funding	1138.78

* In 2024 the Department of Health provided supplementary capital funding of €5.46m for onward provision to the OPW. This funding supported health elements of Brexit capital projects delivered by the OPW.

Table 2.a. (ii) Capital Allocation – Department of Children, Equality, Disability, Integration and Youth 2024

Capital Allocation 2024	€m
Original Core Allocation Department of Children, Equality, Disability, Integration and Youth	23.02
Total Available Funding	23.02

Throughout each year, the HSE actively manages and monitors progress and performance on each project included in the Capital Plan. The expenditure against profile to end September 2024, showed an overall variation of €63.76m, against profile.

Following the Q3 project review undertaken during August and September 2024, budget adjustments and a re-allocation of infrastructure capital funding (including available income) was undertaken, to ensure maximum utilisation of the 2024 Capital Plan allocation. The 2024 re-allocation of capital funding is shown in Table 2.b.

Expectations are that the capital allocation will be fully utilised by the HSE in 2024.

Table 2.b – Capital Re-allocation 2024

Category	€m
Community Services	8.00
Infrastructure Risk Projects (Fire, Structural, Mechanical and Electrical)	38.00
Equipment Replacement Programme	49.00
Ambulance Replacement Programme	20.00
Total Re-Allocated Funding	115.00

SECTION 3 – Capital Plan 2025

Context for Capital Plan 2025

Capital Plan 2025 takes cognisance of Government and Ministerial priorities, in particular *Sláintecare* and initiatives to improve and provide high quality infrastructure. It also takes account of the HSE Corporate Plan 2021-2024, the in-development Corporate Plan 2025-2027 and the 2025 Letters of Determination. This section of the Plan focuses on capital investment programmes and projects funded in 2025. Priorities stated are those identified with the Minister for Health and the Minister for Disability, Children, Equality, Integration and Youth, and with officials in the Capital Infrastructure Unit, Department of Health and the Finance and Reform Unit, Department of Children, Equality, Disability, Integration and Youth, Regional Executive Officers and divisions in the HSE Centre. Progression of all projects will be in accordance with the governance protocols outlined in Section 1.

Letters of Determination 2025

The Letters of Determination 2025, which issued from the Department of Health on 5 November 2024 and the Department of Children, Equality, Disability, Integration and Youth on 1 November 2024, set out the level of capital funding available for building, equipping and furnishing. The breakdown of the funding is outlined in Tables 3.a. (i) and 3.a. (ii)

**Table 3.a. (i) – Letter of Determination - Department of Health
Capital Allocation 2025**

Funding Category	Department of Health €m
Building, Equipping & Furnishing Allocation (Vote)	1,250.00
Income (proceeds from insurance claims, funding contributions to individual projects, sale of assets etc.)	80.00
Total Available Funding	1,330.00

**Table 3.a. (ii) – Letter of Determination - Department of Children, Equality, Disability, Integration and Youth
Capital Allocation 2025**

Funding Category	Department of Children, Equality, Disability, Integration and Youth €m
Building, Equipping & Furnishing Allocation (Vote)	27.00
Total Available Funding	27.00

The annual Capital Plan submitted to the Department of Health and the Department of Children, Equality, Disability, Integration and Youth, takes in to account contractual commitments, investment priorities, regulatory requirements, including HIQA compliance programmes, and available funding. Following the allocation of funding to meet all contractual commitments, priority is given to:

- Ambulance replacement: €17.80m.
- Equipment replacement programme: €86.25m.
- Infrastructural risk: €79.39m.
- Climate action: €34.55m (an additional €56m will be provided by the SEAI in 2025 to support this Programme);

Particular focus when assessing projects and allocating the remaining funding is placed on alignment with universal healthcare objectives, SHIF/CAF alignment, the mitigation of infrastructural and clinical risk to ensure patient and staff safety and regulatory compliance. Deliverability and timescale are also considered, while the mandatory social responsibility associated with climate change and achieving net zero carbon by 2050 is a further factor. Table 3.b illustrates the funding categories for Capital Plan 2025 and the recommended funding allocation.



Roscrea Primary Care Centre, Co. Tipperary

Table 3.b. – 2025 Capital Plan Categories and Recommended Funding Allocation

2025 Capital Plan Categories and Recommended Funding Allocation	€m
Acute Projects Total (refer to breakdown below)	531.38
Acute: Capacity	7.17
Acute: Hospital Inpatient Bed Capacity Expansion Plan	136.38
Acute: Critical Care	2.38
Acute: Diagnostics/Laboratory Facilities	20.56
Acute: Emergency Departments	16.73
Acute: Elective Hospitals	5.00
Acute: Maternity Paediatric	20.38
Acute: Surgical Hubs	173.29
Acute: Trauma Services	29.24
Acute: Other (E.g. minor building works, IPC, ancillary projects such as Mortuaries, CSSD, OPD)	120.25
Ambulance Projects	12.30
Ambulance Replacement Programme	17.80
Capital Projects Initiation, Appraisal and Development Fund*	7.00
Climate Action**	34.55
Community Care (HIQA) Older Persons	182.85
Community Services	10.42
Corporate Projects	2.46
Enhanced Community Care	34.06
Equipment Replacement Programme	86.25
Health and Wellbeing	1.57
Infrastructural Risk	79.39
Local Injury Units	8.00
Mental Health	31.00
National Maternity Hospital to St. Vincent's University Hospital	25.71
New Children's Hospital	200.00
Primary Care	35.41
Primary Care – Public Private Partnership	17.71
Radiation Oncology	12.13
Sub-Total Department of Health Vote	1330.00
Community Based Specialist Disability Services (includes De-congregation)	27.00
Total	1357.00

*Drawdown of funding from the Capital Projects Initiation, Appraisal and Development Fund will be in consultation with the relevant Department, having already been aligned with the SHIF.

** An additional €56m will be provided by the SEAI in 2025 to support this Programme of climate action initiatives.

Capital Plan 2025 Prioritisation Process

In preparation for Capital Plan 2025, a first draft of the Plan was prepared following a review of all projects approved subject to funding, by the National Capital and Property Steering Committee. This reflected Ministerial priorities and the Strategic Healthcare Investment Framework. A process of engagement with the Regional Executive Officers followed, when finalising the Plan. Defined arrangements will be agreed in 2025, underpinned by the Strategic Healthcare Investment Framework, to enable preparation of future Capital Plans.

In compiling Capital Plan 2025, the following areas were considered integral to the prioritisation process:

- Contractual commitments, i.e. all projects in construction, including the cost of equipping these projects.
- Infrastructural risk projects, deliverable through the Minor Capital Programme.
- The increased level of funding required to support the National Equipment Replacement Programme.
- The increased level of funding required to support the Ambulance Replacement Programme.
- The Climate Action Programme.
- The Surgical Hub Programme.
- The development of Local Injury Units.
- Progressing the Community Nursing Unit Programme.
- Funding contractually committed to Primary Care Centres and Community Nursing Units under the Public Private Partnership Unitary Payments process.
- Additional acute capacity, as set out in the 2024 Acute In-Patient Bed Capacity Expansion Plan.
- The capital allocation for Specialist Community Based Disability Services.
- Preparation of the multi-annual Mental Health Capital Plan.

Following the allocation of funding to meet all contractual commitments, priority programmes and regulatory requirements, the remainder of the funding is allocated to projects, which have been identified by Government and the Minister, following engagement with the Regional Executive Officers. Specific initiatives and programmes to improve access, re-direct care to a community setting, or expand healthcare capacity receive priority. These include the Enhanced Community Care Programme, additional primary care centres, access to disability services including the Decongregation Programme, additional beds, elective services, trauma units and infrastructural risk.



Ballyshannon Community Nursing Unit, Co. Donegal

Opportunities and Challenges

There are a number of opportunities and challenges associated with the delivery of Capital Plan 2025, including:

- The transition to Health Regions in 2024, requiring further embedding of new processes, new ways of working and variation in roles and responsibilities.
- The embedding of the evidence and needs based approach to capital investment in healthcare, as outlined in the Strategic Healthcare Investment Framework, to be underpinned by the Common Appraisal Framework, ensuring that future funding allocations align with sectoral objectives.
- The revision of the HSE Capital Projects Manual and Approvals Protocol, to align with the Infrastructure Guidelines, the Strategic Healthcare Investment Framework and the Common Appraisal Framework.
- The final 2024 expenditure out-turn, which could impact the projected expenditure in 2025 and beyond.
- Fluctuation in expenditure on the New Children's Hospital, which would have a significant impact on the remainder of the Capital Programme, and Capital Plan 2025.
- The impact of current and future construction inflation on all projects.
- Climate action deliverables and the measures required to achieve the 2030 and 2050 targets.
- Increasing costs associated with new building standards and building regulations.
- Sustainable levels of skilled resources within Capital and Estates, required to oversee delivery of the Capital Plan.
- Availability of labour, specialised resources and capacity within the construction sector to enable project delivery.
- Clinical or infrastructural requirements that are yet to be identified.

Ongoing Management

The inherent uncertainties associated with undertaking infrastructure projects, coupled with dynamic market conditions requires continuous management and review of the Capital Plan. Challenges referred to above, and associated with the availability of labour, specialised resources and overall capacity within the construction sector, may impact progress on some projects. This in turn can influence accurate assessment and management of project cash flow.

Appraisal and analysis of the Capital Plan is undertaken through systematic, regular and timely management reviews for all projects and re-allocation of funding when required. This ensures the significant investment in health infrastructure is fully utilised, enabling the delivery of high quality, safe, accessible and sustainable healthcare facilities, supporting Government, Department of Health and HSE priorities.

SECTION 4 – Women’s and Children’s Health

Women’s Health

The National Women and Infants Health Programme (NWIHP) was established to lead the implementation of the *National Maternity Strategy – Creating a Better Future Together 2016-2026*, which is focused on strengthening and integrating services. The NWIHP oversees a comprehensive programme of work, focused on the health of women and infants and continues to engage closely with the Department to drive and implement the *National Maternity Strategy* and the *Women’s Health Action Plan 2024-2025*.

Development of the New National Maternity Hospital on the St. Vincent’s Hospital Campus is a priority project for Government and the HSE.



Architect rendering of the exterior façade of New National Maternity Hospital, Dublin


In 2025, we will:

- Provide €25.71m to continue Government priority projects, such as the New National Maternity Hospital
- Progress other identified projects nationally, including the Women’s Health Hub project at The Coombe Women’s Hospital
- In support of the model of care for perinatal health, underpinned by the National Mental Health Strategy, the necessary feasibility and preparatory studies will be undertaken to co-locate Ireland’s first mother and baby unit with the new maternity hospital. This development will be subject to appraisal and funding approvals and alignment with the Strategic Healthcare Investment Framework



Snapshot of projects anticipated to complete in 2025

- Relocation of Women's Health Team from University Hospital, Kerry
- Neonatal Unit, University Maternity Hospital, Limerick



Snapshot of projects anticipated to advance in 2025

- Re-location of clinical ambulatory services from Rotunda Hospital, Dublin
- Expansion of Women's Health hub at the Coombe Women's Hospital, Dublin

Children's Health

A key foundation for healthy communities is protecting and improving the health of children so that all children and young people will be able to live their best, healthiest life.

Children's Health Ireland lead the clinical and operational transformation of acute paediatric healthcare. This includes existing hospitals at Crumlin, Temple Street and Tallaght, and the Urgent Care Centre at Connolly Hospital. The completion and commissioning of the New Children's Hospital on the St. James's Hospital campus is a priority for Government and the HSE.

In 2025, we will:

- Provide €200m towards the completion of the New Children's Hospital
- Commission the New Children's Hospital
- Progress the new paediatric department at Cork University Hospital



Roof Garden, New Children's Hospital, St. James' Hospital Campus

SECTION 5 – Community Services

Primary Care

Primary care is an integral component of *Sláintecare*, reflected in the 2025 HSE National Service Plan. Primary care delivers treatment and supports to people close to home, across the continuum of their lives through a community-based approach. Primary Care infrastructure incorporates GP services, in addition to a wide range of diagnostic, treatment and support services including dental, audiology, ophthalmology, child psychology and therapy services. The provision of primary care centres, also supports accommodation for community mental health services, disability services, environmental health services, accommodation for Tusla, ambulance rapid deployment points and civil registration services. Provision is also made in the 2025 Capital Plan for the unitary payment for primary care centres already delivered through the public private partnership mechanism.



Kilbeggan Primary Care Centre, Co. Westmeath

In 2025, we will:

- Provide €35.41m for primary care projects
- Maintain the programme of construction for primary care centres, via the traditional funding model
- Maintain revenue investment for construction of primary care centres, through the operational lease mechanism



Snapshot of projects anticipated to complete in 2025

- Birr, Co. Offaly
- Fethard (Slieve Ardagh), Co. Waterford
- Nenagh, Co. Tipperary
- Ballybay, Co. Monaghan



Snapshot of projects anticipated to advance in 2025

- Finglas, Co. Dublin
- Primary Care Building at St. Joseph's Hospital Campus, Limerick

Enhanced Community Care

The Enhanced Community Care (ECC) reform programme helps people to live well and promotes independence by reorienting services for older people and people living with long-term conditions towards general practice, primary care and community-based services.



Enhanced Community Care Facility, Westfield, Ballincollig, Co. Cork



The programme of community healthcare networks and community specialist teams, working in an integrated way with community intervention teams, the National Ambulance Service and acute services, delivers health and social care services to; manage care at local level, prevent avoidable referrals and admissions to acute hospitals, where it is safe and appropriate to do so, and supports the transition from hospital to community services.

In 2025, we will:

- Provide €34.06m to deliver accommodation solutions for ECC teams
- Continue engagement and collaboration with Health Regions on interim accommodation requirements to advance projects
- Progress approved, permanent solutions to accommodate ECC teams, in accordance with the HSE Capital and Property Approvals Protocols and the Strategic Healthcare Investment Framework and Common Appraisal Framework



Snapshot of projects anticipated to complete in 2025

- Cashel, Co. Tipperary
- Cherry Orchard Hospital, Co. Dublin
- Hawthorn Building, Naas, Co. Kildare
- Coastal and Clontarf, Co. Dublin



Snapshot of projects anticipated to advance in 2025

- St. Luke's Hospital, Clonmel, Co. Tipperary
- St. John's Campus, Sligo, Co. Sligo
- Corduff, Co. Dublin
- St. Mary's Health Campus, Cork City, Co. Cork

Social Care – Older Persons

Older Persons’ Services contribute to the continued enhancement of community care services by implementing and delivering a new integrated model of care for older persons, enabling increased access to care and supports, at home and in the community. Planning efforts need to ensure that accommodation for an increasing older population is delivered when it is required.

The Department of Health and the HSE are maintaining progress on the programme of investment in public residential care, recognising the requirement for HIQA regulatory compliance. The HSE and the Department, continue to update plans for the completion of the Community Nursing Unit (CNU) Programme and the CNU Public Private Partnership Programme. Planning for a ten-year capital programme to deliver additional community capacity in long term residential care, will be further advanced in 2025.

In 2025, we will:

- Provide €182.85m for investment in public residential care
- Complete construction work on all existing CNU sites, providing community beds for older persons through the public private partnership process
- Continue to progress the Community Nursing Unit, Infrastructure Regulatory Compliance Programme by delivering improved replacement accommodation for older person’s



Kanturk Community Nursing Unit





Snapshot of projects anticipated to complete in 2025

- St. Ita's Hospital, Newcastlewest, Co. Limerick
- St. Vincent's Hospital, Mountmellick, Co. Laois
- St. Vincent's, Athlone, Co. Westmeath
- St. Finbarr's, Cork City, Co. Cork



Snapshot of projects anticipated to advance in 2025

- Letterkenny, Co. Donegal
- St. Raphael's Centre, Youghal, Co. Cork
- St. Coleman's Hospital, Rathdrum, Co. Wicklow
- St. Joseph's, Longford Town, Co. Longford

SECTION 6 – Disability Services

Specialist Community Based Disability Services

Ireland ratified the United Nations Convention on the Rights of Persons with Disabilities (UNCRPD) in 2018. The HSE is responsible for ensuring the implementation of the UNCRPD, as it pertains to the delivery of services under its remit and the broader policy commitments implied in the forthcoming National Disability Strategy.

Specialist disability services are delivered through the alignment and collaboration of the Department of Children, Equality, Disability, Integration and Youth (DCEDIY), the HSE, people with disabilities and their families, disabled persons' organisations, service providers and a wide range of other stakeholders. These span residential, home support and personal assistant services, clinical and allied therapies, neuro-rehabilitation services, respite services, day services and rehabilitative training. The primary goal of disability services is to improve access for children and adults to essential services, to ensure they have the opportunity to maximise their potential to live as independently as possible, as equal citizens. Specialist disability services focus on providing supports to people with more complex disabilities and aim to complement the mainstream health and social care services provided to people with disabilities, alongside the rest of the population.

Work continues to develop and embed effective governance performance reporting and service delivery functions following the transfer of task from the Department of Health to the DCEDIY. All capital funding is provided by the DCEDIY and ring-fenced for specialist community-based disability projects only, with the goal of expanding and transforming disability services to meet current and future need, taking account of Government priorities.

This Capital Plan aims to reflect those priorities, and the significant objectives set out in the Action Plan for Disability Services, 2024-2026. HSE Capital and Estates are continuing to engage with service colleagues and DCEDIY to progress the development of a disability specific, multi-annual capital strategy, which identifies the medium-term infrastructure needs for disability services. Resources required to progress this multi-annual capital strategy, and which are key to the delivery of disability specific initiatives, will continue to be prioritised in 2025. In addition to the approved senior role at assistant national director level, further technical resources to manage and deliver the increasing capital programme will be pursued, subject to available funding.

Capital spend during the lifetime of the 2024 Capital Plan was accelerated and enhanced efforts will be made to increase the pipeline of disability capital projects in 2025. Capital submissions received for disability projects will be subject to appropriate project appraisal, assessment of suitability to advance, development of business case and compliance with the Strategic Healthcare Investment Framework and the Common Appraisal Framework. It is anticipated that the transition to Health Regions will support visibility and the efficiency of disability functions at regional and national level. Project locations under appraisal in advance of business case submission include: Cork (Kanturk); Galway (Athenry, Craughwell and Tuam); Kerry (Beaufort); Roscommon and Dublin.

A Department of Health approved de-congregation programme to provide accommodation in the community for residents of institutional congregated settings has been underway since 2016. To date, 135 properties have been provided, with a further 26 in the pipeline. Investment to date is approximately €75m. The focus is on de-congregation from locations with the greatest non-compliance issues, where the priority has been the purchase of houses in the community and the adaptation of these houses to suit the requirements of residents. The programme has been impacted by the recent, general low availability of suitable housing stock, but will continue, as committed in 2025. It is acknowledged that engagement locally, with Local Authorities and Approved Housing Bodies will be important in identifying and sourcing appropriate housing.

In 2025, we will:

- Provide €27m to support specialist community-based disability services
- Progress the development of a disability specific, multi-annual capital strategy
- Increase the disability capital projects pipeline
- Continue the transition of people from institutional settings to community-based services in line with the *Time to Move on from Congregated Settings* policy
- Continue engagement with local authorities and approved housing bodies to avail of additional Government funding through the Capital Assistance Scheme
- Enable service delivery by providing accommodation for disability network teams, therapy and day services
- Continue to progress the recruitment of resources, key to the delivery of disability specific initiatives



St. Anne's Group Residence, Co. Louth, delivered as part of the Decongregation Programme



Snapshot of projects anticipated to complete in 2025

- Adult autism respite and day services at Adelphi House, Co. Dublin
- Purchase and refurbishment of replacement accommodation in Counties Cavan, Sligo and Monaghan
- Ballycogley House, Co. Wexford



Snapshot of projects anticipated to advance in 2025

- Extension of Day Services at St. Michael's House, Co. Dublin
- Cleary Centre, Donegal Town, Co. Donegal
- St. Otteran's Children's Therapy, Co. Waterford

SECTION 7 – Cross Care Service Areas

National Ambulance Service

The National Ambulance Service (NAS) is one of the state's principal emergency services. The NAS serves the needs of patients and the public as part of an integrated health system, through the provision of high quality, safe and patient-centred services.

The NAS Strategy, currently under consideration sets out an implementation plan to meet service demands and support universal healthcare. Building on the clinically led model of patient care, the NAS will continue to ensure that care provision is in the most appropriate place with further development of alternative care pathways.



New Ambulance Base in Galway City

In 2025, we will:

- Provide €17.80m to expand and maintain the ambulance vehicle fleet
- Continue planning and engagement with NAS, to progress prioritised capital developments
- Provide an increased allocation of €12.30m to support the provision of new infrastructure and the modernisation of existing ambulance bases
- Review the sustainable funding levels required for ambulance fleet replacement, linked as appropriate, to the Government Climate Action Plan
- Advance projects at Mallow, Co. Cork, Rosbrien, Co. Limerick and Glen Abbey, Tallaght, Co. Dublin, Caherciveen, Co. Kerry and New Ross, Co. Wexford

Population Health and Wellbeing

A fundamental goal of developing a sustainable health service is supporting and improving the health of the population. *Sláintecare* recognises the importance of supporting people to look after and protect their own health and wellbeing and the Joint Action Programmes, places the prevention agenda front and centre of healthcare service delivery. Enabling a number of programmes of work that will assist the services in focusing on promoting and improving health and wellbeing, treatment and care is a continuing priority.

In 2025, we will:

- Provide €1.57m to continue initiatives aimed at improving the health and wellbeing of the population including provision of infrastructure to support the continued expansion of BreastCheck Services
- Enable the ongoing programme of fluoridation works in conjunction with Uisce Éireann

Social Inclusion



Architect rendering of Merchant's Quay Project, Dublin

Social inclusion works across a range of statutory services in partnership with the community and voluntary sectors to address health inequalities and improve access to health services for vulnerable and excluded groups. This includes services supporting those impacted by addiction and homelessness.

The Department of Health is committed to strengthening integrated care pathways for people who are homeless with chronic health needs based on an inclusion health model, to achieve better health outcomes and reduce the incidence of premature death.

In collaboration with the HSE an Inclusion Health Framework is being developed, outlining all aspects of health policy and funding, including capital infrastructure, to enhance access to healthcare services for homeless and other socially excluded groups. This public consultation process, commissioned by the Department of Health will be undertaken by the Inclusion Health Research Group in University College Cork, to examine where health services can be accessed and will be integral to policy creation within the Department and wider Government.

In 2025, we will:

- Provide €0.6m contribution (€1m overall) for a medically supervised injecting facility at Merchants Quay to support integrated care pathways and harm-reduction responses
- Provide funding to expand addiction care facilities for people experiencing homelessness

Rehabilitation Services



National Rehabilitation Hospital, Dun-Laoghaire, Co. Dublin

The National Clinical Programme for Rehabilitation Medicine describes the framework for the development of specialist rehabilitation services in Ireland, in line with national policy and the strategy for neuro-rehabilitation services.

The objective of the Programme is a structure where the ability and societal participation of those affected by complex, life-altering conditions can be maximised by early, timely and enduring intermittent access to specialist rehabilitation.

In 2025, we will:

- Provide capital funding to progress phase 2 of the re-development of the National Rehabilitation Hospital in Dun-Laoghaire
- Provide funding to progress a rehabilitation unit at Blarney, Co. Cork
- Progress the design of the rehabilitation unit at Roscommon University Hospital

Palliative Care Services

Palliative care is an approach that improves the quality of life of patients and their families through expert pain and symptom management, psychosocial, spiritual and bereavement support. Specialist palliative care services are provided by the HSE in conjunction with the voluntary sector.

Specialist palliative care reduces acute hospital admissions and facilitates earlier discharge from hospitals to the community, where care is delivered by the palliative care team in accordance with the needs of the patient and their family.



Architect rendering of proposed Palliative Care Facility in Co. Cavan

In 2025, we will:

- Advance palliative care projects at regional locations including North West Hospice, Sligo, Donegal Hospice, Letterkenny, Drogheda, Tullamore, St. Francis Raheny, and Cavan

Cancer Services

The National Cancer Control Programme (NCCP) leads on the implementation of the *National Cancer Strategy 2017-2026*, working collaboratively and engaging with service users, external stakeholders, and acute and community services. Cancer services are designed and delivered through 8 adult cancer centres, one paediatric cancer centre and in a further 17 public hospitals for systemic anti-cancer therapy (including chemotherapy and immunotherapy). Radiotherapy is provided at 7 centres nationally, informed strategically by the National Plan for Radiation Oncology. Rolling capital investment, reviewed annually, aims to ensure that cancer facilities meet patient requirements and respond to new, evidence-based treatment opportunities.

In 2025, we will:

- Provide €12.13m for radiation oncology projects under the National Cancer Control Programme
- Support the commitment in the Programme for Government, included in the National Development Plan 2021-2030 to the development of cancer centres
- Support the development of Aseptic Compounding Units at University Hospital Kerry, Cork University Hospital, Letterkenny University Hospital and Cavan General Hospital
- Progress the design of the Oncology Day Unit at Cavan General Hospital, Tallaght University Hospital, Kerry University Hospital and the Midland Regional Hospital, Tullamore
- Advance the development of a Nuclear Medicine Scanning Facility at St. Luke's Hospital, Rathgar, Co. Dublin
- Progress the Shared Island co-funded Daisy Lodge paediatric cancer care respite project in Cong, Co. Mayo



Architect rendering of Daisy Lodge, Paediatric Cancer Care Respite Facility, Cong, Co. Mayo

Medical Equipping

The HSE review of medical equipping requirements concludes that a sustainable level of investment is required annually to replace older and less reliable equipment and address the existing deficit. From a risk and patient safety management perspective, an equipment replacement funding allocation of €86.25m is being made available in 2025. This is an increase of 33% on the initial 2024 funding allocation.

In 2025, we will:

- Provide €86.25m to fund the replacement of older, less reliable equipment and, invest in additional equipment to mitigate risk and manage patient safety
- Continue the comprehensive assessment of the need to support the ongoing schedule of medical equipment replacement, across the six Health Regions, to inform future medical equipment replacement requirements



Cardiac Catheterisation Laboratory, Cork University Hospital

Diagnostics

An overarching priority within acute and community services is the provision of diagnostics including endoscopy and radiology capacity to support access, early detection of disease, patient flow and capacity.

Funding is also provided to support increasing laboratory capacity nationally.



Radiology Diagnostic Facility

In 2025, we will:

- Fund projects to the level of €20.56m across the spectrum of acute services to provide diagnostic facilities
- Fund community diagnostic facilities to support delivery of an integrated model of care


Mental Health Services

The HSE is committed to promoting positive mental health and mental wellbeing across the population and throughout the lifespan of need. To ensure integrated care, service continuity and the best possible outcomes for those experiencing mental health difficulties, services are provided within a stepped-care model, where each person can access a range of options of varying intensity, matched to their needs. This includes specialist inpatient services, day hospitals, residential services, services within community settings and in primary care, as well as non-specialist supports and services. Many of these services are provided in collaboration with funded partner organisations.

It is agreed that the first phase of a mental health capital plan will progress, as outlined in the recently completed Mental Health Approved Centre Priority Sites Capital Plan Report which was submitted to the Mental Health Commission. The established Mental Health Capital Planning Working Group are now engaging with each Health Region in the development of a multi-annual capital investment plan for all mental health services.

In 2025, we will:

- Provide €31m for a significant range of developments to support mental health service delivery
- Advance interim refurbishment projects at the Lakeview Unit, Naas General Hospital, the Jonathan Swift Clinic St. James Hospital and St. Michael’s Unit, Mercy University Hospital, Cork
- Progress design specification for developments to replace existing accommodation at each of the five prioritised sites:
 - Department of Psychiatry, Roscommon University Hospital
 - St. Aloysius Ward, Mater Misericordiae University Hospital & St Vincent's Hospital Fairview with new unit at the Mater Misericordiae University Hospital
 - Lakeview Unit, Naas General Hospital
 - The Jonathan Swift Clinic St. James Hospital
 - St. Michael’s Unit, Mercy University Hospital, Cork
- Continue a programme of anti-ligature works across all facilities
- Commission the Specialist Eating Disorders Hub at Mount Carmel Hospital, Dublin



Snapshot of projects anticipated to complete in 2025

- Refurbishment of facility for CAMHS, Malahide Road, Co. Dublin
- Completion of CAMHS facility in Parteen, Co. Clare
- Re-configuration of Carraig Mór Centre, Cork City



Snapshot of projects anticipated to advance in 2025

- Department of Psychiatry, Roscommon University Hospital
- Lakeview Unit, Naas General Hospital, Co. Kildare
- The Jonathan Swift Clinic, St. James Hospital, Co. Dublin
- Acute Mental Health Inpatient Unit at the Mater Misericordiae University Hospital, Co. Dublin



Patient Garden Area, West Cork Mental Health Facility, Bantry, Co. Cork

Infrastructural Risk

Management of infrastructural risk is through a combination of funding in two categories: major capital (> €1m projects) and minor capital (<€1m projects). This funding is protected to address priority infrastructural and clinical risk issues that have arisen and are considered urgent. The infrastructural risk programme will require sustained investment in future years to mitigate infrastructural and clinical risk.

In 2025, we will:

- Provide €79.39m to fund projects which will support the mitigation of risk and the provision of safe facilities for service users, staff and the public
- Continue to prioritise projects central to safety, such as fire safety, electrical safety and emergency supply
- Continue the focus on upgrading life critical systems, including medical gases
- Maintain engagement across the services to address infrastructural aspects of infection prevention and control, including legionella management and ventilation upgrades

SECTION 8 – Acute Hospital Services

Acute Hospital Capacity – Inpatient Beds

Capital Plan 2025 provides funding to improve availability of inpatient beds and ensure sufficient capacity to meet demand within each region. The *Acute Hospital Inpatient Bed Capacity Expansion Plan 2024-2031*, builds upon the additional capacity provided in response to projected demand identified following the 2018 capacity review. This is an ambitious plan aiming to deliver a total 4,367 adult inpatient beds (including critical care), maternity and paediatric specialties, between 2024 and 2031. The focus is on responding to immediate urgent and emergency care pressures. This plan aligns with the Strategic Healthcare Investment Framework and delivery of additional acute bed capacity will also be underpinned and informed by:

- Affordability within the overall capital and revenue funding available
- Urgent and emergency care pressures
- Performance and utilisation of existing available capacity

In 2025, we will:

- Progress additional acute beds across the system in accordance with the Acute Hospital Inpatient Bed Capacity Expansion Plan 2024-2031
- Progress the design of 2,997 additional and 355 replacement beds in the Acute Hospital Inpatient Bed Capacity Expansion Plan
- Continue detailed design, tender requirements and enabling works at several sites, including Cavan General Hospital, Wexford General Hospital, Cappagh Hospital, Mallow General Hospital, Beaumont Hospital and St. Vincent's University Hospital, Dublin
- Complete construction and commissioning of Block A (96-beds), at University Hospital Limerick. Planning permission is approved for the lower floors of Block B and work will continue on this project in 2025. The HSE continues to explore all opportunities to accelerate the provision of in-patient capacity at this location
- A senior estate manager is now appointed to lead projects arising out of the refreshed infrastructural masterplan for University Hospital Galway. A design team is also progressing the Development Control Plan for the University Hospital Galway campus which is nearing completion. This will be followed by a detailed timeline for delivery of identified projects



Architect rendering of the proposed Development Control Plan for University Hospital Galway



Single Room Accommodation, New Acute Ward Block, University Hospital Limerick



Snapshot of projects anticipated to complete in 2025

- University Hospital Limerick
- St. Luke's General Hospital, Kilkenny



Snapshot of projects anticipated to advance in 2025

- Cavan General Hospital,
- Wexford General Hospital,
- Cappagh, Beaumont and St. Vincent's University Hospital's Dublin
- Mallow General Hospital, Cork

Trauma Services

The National Trauma Strategy recommended the establishment of an inclusive Trauma System for Ireland. Over a number of years, the Trauma System will be organised into two Trauma Networks, Central and South. Both will operate a hub-and-spoke model, each with a Major Trauma Centre and a number of supporting Trauma Units, where facilities and services co-ordinate the care of injured patients along standardised pathways.

In 2025, we will:

- Provide funding of €29.24m to address the delivery of trauma services, set out in the *Trauma System for Ireland* report
- Progress the design processes for the major trauma centres in the Mater Misericordiae University Hospital Dublin and Cork University Hospital
- Complete the Major Trauma helipad at Cork University Hospital

Critical Care



Critical Care Unit, Tallaght University Hospital, Dublin

The Strategic Plan for Critical Care aims to increase critical care capacity nationally over two phases of capacity expansion. Phase one is complete at Tallaght University Hospital and the Mater Misericordiae University Hospital. A contractor is appointed for the additional six beds at St Vincent's University Hospital.

Further beds, subject to necessary approval processes, will be provided in phase two at five prioritised sites: St. Vincent's University Hospital, the Mater Misericordiae Hospital, St. James's Hospital, Beaumont Hospital and Cork University Hospital.

In 2025, we will:

- Provide €2.38m (€8.38m including the interim beds in St. Vincent's University Hospital) for projects delivering critical care capacity
- Continue development of critical care capacity in line with the National Strategic Plan for Critical Care
- Progress the design processes for further new beds



Snapshot of projects anticipated to complete in 2025

- Six bed critical care unit at St. Vincent's University Hospital, Dublin



Snapshot of projects anticipated to advance in 2025

- Beaumont Hospital, Dublin
- St. James's Hospital, Dublin
- Connolly Hospital, Dublin

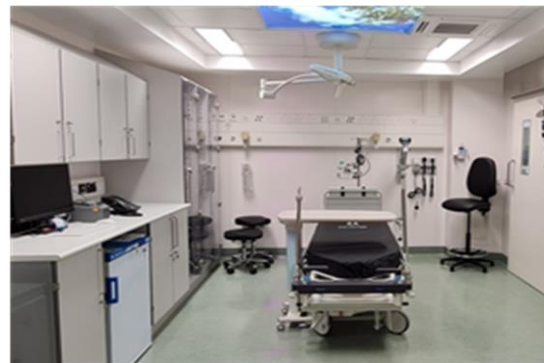
Urgent and Emergency Care

The HSE is committed to the implementation of the Urgent and Emergency Care Plan which supports the delivery of continued service improvement across four pillars, which are integrated around patient’s needs. These four pillars are: hospital avoidance, ED operations, in-hospital care delivery and discharge management, across the newly established Health Regions.

The move toward a more integrated health system, organised into the six HSE Health Regions is in the context of improvement, based on integrated care, focused on patients and informed by the needs of the local population.

In 2025, we will:

- Provide €16.73m to advance emergency department facilities nationally
- Progress a national plan for the development of a Local Injury Unit Programme



New Paediatric Emergency Department, Cork University Hospital

Scheduled Care – Surgical Hub Programme

The 2025 National Service Plan targets will be achieved as part of a phased multi-year approach towards attaining *Sláintecare* maximum wait times of no more than 12 weeks for an inpatient / day case procedure or gastrointestinal (GI) scope, and 10 weeks for a new outpatient appointment. This will include the implementation of national strategies and services in collaboration with community services. The targeted expansion of operational and physical capacity is a key enabler to support a sustainable reduction in these waiting times.



Completed Surgical Hub treatment suites at Mount Carmel Hospital, Dublin

In 2025, we will:

- Make available €173.29m to continue the expansion of the Surgical Hub Programme
- Complete construction of the North Dublin Surgical Hub, Swords, Co. Dublin, following completion of the Surgical Hub Facility at Mount Carmel, South Dublin
- Continue to advance surgical hub infrastructure developments to support scheduled care initiatives at Galway, Cork, Waterford and Limerick

Scheduled Care – Elective Hospitals Programme

As part of the *Sláintecare* National Elective Ambulatory Care Strategy, new elective hospitals will be developed in Cork, Galway and Dublin at two locations – Connolly and Crumlin. This will change the way in which day case, planned procedures, surgeries, scans and outpatient services are delivered, ensuring greater capacity in the future and helping to address waiting times for scheduled care. As sponsoring agency, the HSE will continue to support the Department of Health in the development of these dedicated centres, part of a sustainable model and a strategic response to the evolving healthcare and treatment needs of an increasing population.

In 2025, we will:

- Provide €5m in support of the design of these standalone centres, in the Elective Hospitals Programme
- Progress the design of Elective Care Centres in Cork and Galway
- Finalise the project brief and progress the initial design of the Elective Care Centres in Dublin



New Outpatient Department, Merlin Park University Hospital, Galway

SECTION 9 – Social Accountability

Climate Action and Sustainability

The Government’s Climate Action Plan sets out the energy efficiency and energy related green-house gas emissions reduction targets, which public sector bodies in Ireland are mandated to achieve. As a public body, the HSE has developed a roadmap (revised in 2024), setting out how it will deliver these targets.

The Infrastructure Decarbonisation Roadmap developed by the HSE, outlines work undertaken to date and the continuing approach to reducing energy related carbon emissions from healthcare buildings and their operation. This will be achieved with measures to reduce energy consumed by new and existing buildings, shifting energy sources away from fossil fuels towards renewable and carbon zero energy sources. Targets are classified as:

- Reducing energy related green-house gas emissions by 51% in 2030 and achieving net zero by 2050.
- Achieving a 50% improvement in energy efficiency in the HSE by 2030.
- The non-installation by the HSE of heating systems that use fossil fuels after 2023, in:
 - new buildings, and,
 - “major renovation” retrofit projects unless in defined exceptional circumstances.

The HSE has established that circa 150 significant energy user (SEU) healthcare buildings, account for approximately 85% of energy use and energy related emissions. Dedicated energy officers, supporting the establishment and operation of energy management teams are in place at these SEU’s. Energy teams have also been established to identify energy reduction opportunities, which are supported through an energy shallow retrofit minor capital fund.



Solar Panel Installation Project, HSE National Ambulance Training Centre, Phoenix Park, Co. Dublin

As part of the ongoing work to reduce carbon emissions from buildings within the estate, the HSE has begun a Deep Energy and Carbon Retrofit Programme at a number of identified healthcare sites in partnership with the Sustainable Energy Authority of Ireland. The retrofit works undertaken at these sites will improve energy and emissions performance towards achieving targets set out in the Climate Action Plan. A pilot pathfinder exercise also assessed and evaluated viable technical solutions suitable for use in healthcare environments, so that a scaled up, evidence based, costed, deep energy and carbon retrofit programme can now be further progressed.

The HSE has amended its design team technical requirements and scope of service for all developments. This requires design teams to conform to all current building legislation and standards and demonstrate that all new buildings and major refurbishments are designed to be carbon zero ready. The HSE are also integrating a net zero building and campus approach into all projects and development control plans being progressed as part of the HSE Capital Programme.

In 2025, we will:

- Provide €34.55m (an additional €56m will be provided by the SEAI in 2025) to support this Programme for climate action initiatives
- Progress the Deep Energy and Carbon Retrofit, Pilot Pathfinder Programme in partnership with the SEAI
- Develop a scaled-up and costed Deep Energy and Carbon Retrofit Programme
- In line with revised technical requirements, ensure all facilities are designed to omit fossil fuels and that a clear roadmap exists for all new projects to be net zero carbon to meet obligations for 2030 and 2050
- Support Energy Management Teams through the continued progression of an energy shallow retrofit programme which delivers LED lighting, window and insulation upgrades, heat pump installations and photovoltaic systems

SECTION 10 – Enablers

Resourcing and Workforce Capability

Having a workforce with the right skills, experience and capacity to support HSE objectives remains a significant enabler for delivery of the Capital Plan. A key objective of the HSE is determination of the workforce capability and capacity required to deliver projects in support of healthcare services, reflecting regional health structure requirements. Increases in activity, new service approaches and processes, requires timely implementation of capital projects. This is dependent on having a Capital and Estates team with the right skills and experience available. Capital and Estates will remain proactive in efforts to attract, recruit and retain the best talent to ensure high quality delivery of all projects. Over successive years, requests for additional funding for resources to deliver the increased Capital Programme, have been secured from the Department of Health. This is in acknowledgement of the pivotal importance provision of timely infrastructure plays in enabling healthcare service deliver and will continue to be pursued,

In 2025, we will:

- Continue to progress the recruitment of resources, key to the delivery of the expanding Capital Plan
- Complete the Capital and Estates Workforce Plan

Integrated Workplace Management System

Capital and Estates are delivering an integrated workplace management system, which will enhance service provision to the HSE, and HSE funded bodies. This digitalisation will support the standardisation of work processes, improve the efficiency of services, offer real time information and business reporting, ensure consistency and integrity of data and facilitate timely and accurate decision making. The integrated workplace management system will reflect regional health, and associated Capital and Estates structures.

In 2025, we will:

- Progress key deliverables associated with the implementation of the integrated workplace management system
- Deliver the Property module to the remaining Health Regions – West & North-West, Mid-West and South-West
- Continue roll-out of the Maintenance module to community and acute facilities for reactive and preventative tasks
- Realise benefits from the Environmental and Sustainability module with the introduction of direct metering data
- Progress the Capital Funding Management module to supplement progress made in the project delivery element of the Construction Management module





APPENDICES

Unless stated otherwise, the status of all projects is end Quarter 3, 2024, at time of preparation of Capital Plan 2025



Appendix 1

Projects at Tender Stage, beyond Tender Stage* and Contractually Committed in 2025 (as of 09/10/24)

Funding source is the Department of Health

*All projects at Tender Stage are intended to progress to Construction in 2025

Capital Reference No.	Facility	Brief Project Description	Status
HSE Dublin & North East			
Acute Projects			
11249B	Beaumont Hospital	Refurbishment of Rockfield House (65 spaces), St. Anne's (38 spaces) and Beaumont House (85 spaces) for use as admin accommodation. Project is an enabler to other projects.	Tender
11336	Beaumont Hospital	In accordance with the Acute Inpatient Bed Capacity Expansion Plan, 20 bed purpose built Cystic Fibrosis in patient facility.	Construction
11402	Connolly Hospital Blanchardstown	Integrated Pathology Lab (includes Biochemistry, Microbiology, Haematology, Blood Transfusion unit & Histopathology. To be developed as part of RCSI Project (Graduate Programme), going to site September 2021, payment plan agreed.	Complete
11541	Beaumont Hospital	Infection control works - Refurbish fabric and fittings of Sanitary Facilities on a rolling program, over a 5 year period	Construction
11542	Beaumont Hospital	Fire Alarm & Emergency Lighting Upgrade	Construction
11585A	Mater Hospital	Mater Major Trauma Centre - Phase 1B consists of 2 Nr Theatres; An additional CT and a New MRI. It will also contain ancillary and support space and some shell & core space.	Construction
11620	Rotunda (Earl Building)	Purchase and fit-out of the Earl Building, Cleary's Quarter for clinical ambulatory services decant, enabling future Hospital expansion.	Construction
11625	Rotunda	Upgrade of the Emergency Lighting System and the Fire Detection Alarm System.	Construction
11753	Mater Hospital	Plan to open existing 3rd CV Lab and increase bed capacity. New 18 bed Coronary Care Unit allowing the existing CCU to be converted into an endocrinology ward.	Tender
11760	Mater Hospital	Emergency Department extension to allow patient streaming including the separation of Covid positive and other infectious patients. The extension will consist of triage, resus, treatment cubicles and support spaces. The proposed extension will replace the existing tent structure used for COVID streaming.	Construction
11763	Connolly Hospital Blanchardstown	Construction of a 4th Endoscopy procedure room and associated non-clinical space.	Construction
11859	Swords Business Park	To develop a Surgical Hub facility for Dublin North East area to include 2 Operating Theatres & 2 Minor Procedure Rooms including recovery / post anaesthetic unit and associated support services and staff facilities.	Construction
11869	Beaumont Hospital	Installation of a 3rd CT Scanner into the Radiology Department to give ED more timely access to CT and improve patient flow through the ED department as well as reduce CT OPD waiting lists.	Construction
11967	Beaumont Hospital	Establishment of a 6 bed interventional radiology Day Ward to coordinate the interventional radiology care pre-procedure, and monitor patients after their procedures.	Construction
11992	Our Lady of Lourdes Hospital, Drogheda	Modular 15 bay surge ward consisting of two ward rooms and associated utility rooms, WCs etc.	Construction
12040	Connolly Hospital Blanchardstown	HSE contribution to new RCSI Dental Education Facility (4 storey). HSE will receive two of the four floors which will be used to relocate Rheumatology, Endocrinology & Diabetics out-patients from Unit 8 East.	Tender
12057	Mater Hospital	In accordance with the Acute Inpatient Bed Capacity Expansion Plan, the proposal is to refurbish and upgrade level 3 of the existing Rose Garden Building to include 12Nr additional Oncology & Haematology inpatient beds with ensuite and associated ancillary spaces.	Construction
12065	Connolly Hospital Blanchardstown	Upgrade and improvement of the Hospital primary electrical resilience network.	Construction
13007	Connolly Hospital Blanchardstown	Upgrade of existing Theatre space to allow for a dedicated Emergency-specific Theatre. High Priority but interim solution.	Construction
13031A	Mater Hospital	National Isolation Unit made up of 2 No. Highly Infectious Disease Containment Suites.	Construction
13065	Cavan General Hospital	Extend OPD into Lisdarn Community Care building as an interim measure. Including the provision of space as an interim ECC Hub.	Complete
Enhanced Community Care			
13238	Spoke 2A - St. Davnet's	Proposed refurbishment of vacated building on the grounds of St. Davnet's to house ECC spoke.	Construction
13249	Interim CHN Accommodation (Coastal & Clontarf)	Refurbishment and Fit out of Units at Bayside Shopping Centre for Clontarf and Coastal CHNs. Interim accommodation hub for both CHNs will include 5 clinical rooms, 2 single offices. Open plan office for 34 staff, group room, clinical store room, staff canteen, cleaners store, dirty utility, staff toilets, public toilets, waiting area.	Construction
Mental Health			
11785	1D Griffith Avenue, Drumcondra	Extension and refurbishment of existing building for three community Mental Health teams and an adult Mental Health 7/7 day hospital.	Construction
11948	Connolly Hospital Blanchardstown	Installation of secure anti ligation windows, patient furniture in all bedrooms and reconfiguration to create a NCHD space.	Construction
11949	101 - 102 Malahide Road	Purchase & refurbishment of a building currently used by Mental Health services for CAMHS day service.	Tender



Appendix 1

Projects at Tender Stage, beyond Tender Stage* and Contractually Committed in 2025 (as of 09/10/24)

Funding source is the Department of Health

*All projects at Tender Stage are intended to progress to Construction in 2025

Capital Reference No.	Facility	Brief Project Description	Status
Community Services			
11999	Virginia Community Health Centre	Essential Fire Safety Upgrade works to Virginia Community Health Centre.	Construction
Primary Care			
11469	Kilbarrack Primary Care Centre	Refurbishment, reconfiguration & extension of Kilbarrack Primary Care Centre on existing PCC site.	Complete
11879	St. Christopher's Hospice, Cavan	HSE funding to support the reconfiguration and renovation of the existing St. Christopher's Hospice and the provision of four extensions to provide a specialist inpatient palliative care unit, a palliative care hub, education and bereavement service, admin areas and all associated site works.	Tender
11881	St. Francis Hospice, Raheny	HSE funding to support the construction of a new 24 bed in-patient unit for St. Francis Hospital which will include new mortuary, underground carpark and clinical support faculties with bridge links to the existing building.	Tender
Community Care (HIQA) Older Persons			
10067	St Joseph's Hospital, Ardee	Replacement Community Nursing Unit of St Joseph's Ardee - Older Persons Services (50 beds) - PPP	Construction
HSE Dublin & Midlands			
Acute Projects			
10001	New Children's Hospital	Development of New Children's Hospital - St James's Hospital Site.	Construction
10001D	New Children's Hospital	Family Accommodation Unit	Construction
11273	Regional Hospital Mullingar	Extension to the existing Radiology Department to accommodate a new MRI (MRI being funded by others).	Complete
11445	St. James's Hospital	The existing 'Burns Unit' in St James's Hospital is a 14 Bed Unit of 8 Nr single rooms and a 6 Bedded Ward. The reconfiguration of the Burns Unit is a 3 Phased Project. Phase 1 is in construction. Phase 1 will involve remedial works concerned with Fire Safety works, Mechanical and Electrical works and Air-handling works. Phase 2 & 3 will deal with the physical reconfiguration of the Unit into 10 Nr single rooms, including 2 Nr single isolation rooms and physiotherapy.	Construction
11458	The Coombe Hospital	New Interim Laboratory building for the National Cancer Screening Service (excludes equipping).	Construction
11459	The Coombe Hospital	Expansion of existing Women's Health Unit through additional consulting/treatment suites (Gynaecology/Colposcopy Lab). 9 No. Consulting rooms (4 No. Colposcopy, 3 No. Gynaecology, 2 No. EPAU) & associated office space.	Tender
11488	Tallaght University Hospital	Provision of a replacement Pharmacy Aseptic Compounding Unit.	Construction
11713	St. James's Hospital	Reconfiguration of existing cardiology accommodation to provide space for a third cath lab.	Construction
11729	Portlaoise MRH	Programme of Fire safety improvement works including Fire rating upgrades to walls, partitions and compartmentation in addition to Fire door replacement, Fire detection, alarm systems and emergency lighting system upgrades.	Tender
11777	Naas General Hospital	Reconfiguration and refurbishment of existing space to provide 11 bedded Acute Medical Assessment Unit including an Emergency Department admissions and discharge lounge.	Construction
11860	The Coombe Hospital	Upgrades to the existing active and passive Fire safety systems.	Tender
11862	Tallaght University Hospital	Replacement of 13 existing lifts on campus over a three-year period - mixture of patient/goods lifts and visitor lifts.	Construction
11889	Mount Carmel Hospital	To develop a Surgical Hub facility for the Dublin South area to include 2 No. operating theatres including recovery / post anaesthetic unit and associated support services and staff facilities.	Construction
11978	Portlaoise MRH	Purchase & refurbishment of a property adjacent to Portlaoise MRH for on-call accommodation.	Tender
13003	Portlaoise MRH	Two-storey ED extension for adult and paediatric care.	Construction
13005	Regional Hospital Mullingar	OPD department to accommodate a Respiratory Assessment Unit for Adult & Paediatric care.	Construction
13051	Naas General Hospital	To construct modular unit, 12 no. single rooms. This would assist in the isolation of suspected COVID-19 and other infectious organisms' cases.	Complete
13058	St. James's Hospital	Three storey extension to the ground floor OPD. This project is to facilitate urgent faculties for non-invasive cardiology diagnostics and respiratory services central to the hospital due to the COVID-19 restrictions of space in the existing location. The new accommodation will provide consult/exam and diagnostic procedure rooms (COVID extraction system enabled) with admin area with reception and toilets. Includes space for 3rd Cath lab by decanting.	Complete



Appendix 1

Projects at Tender Stage, beyond Tender Stage* and Contractually Committed in 2025 (as of 09/10/24)

Funding source is the Department of Health

*All projects at Tender Stage are intended to progress to Construction in 2025

Capital Reference No.	Facility	Brief Project Description	Status
Radiation Oncology			
11503	St. Luke's Hospital, Rathgar	New Fire Detection & Alarm System including passive Fire safety works.	Complete
Enhanced Community Care			
13210	HUB 19 - Our Lady's Hospice, Harold's Cross	Fit out of leased space at Our Lady's Hospice, Harold's Cross Campus to accommodate an interim ICPOP team.	Complete
13212	HUB 20 - Cherry Orchard	Phase 1, Refurbishment of Unit 3 (Blackthorn) at Cherry Orchard to accommodate ICPOP. Works include decant of a service current operating out of Unit 3, (Education and Training Service) to a modular building. Phase 2, Extension at Blackthorn modular unit.	Construction
13213	HUB 21 - Quadrant House, Ballymount Avenue, Tallaght	Fit out of leased building to decant non-clinical services from PCC's for use by ECC.	Tender
13214	HUB 22 - Hawthorn Building, Naas	Fit out of leased building to decant non-clinical services from St Mary's (and other buildings) for use by ECC.	Construction
13233	HUB 23 - MRC Mullingar	Reconfigure Mullingar Resource Centre to facilitate establishment of ICPOP specialist team and ICPCD team (interim) pending the development of a permanent facility.	Tender
Mental Health			
11284	Birchwood House, Tullamore	10-Bed High Support Community Residence accommodation.	Tender
11574	Portlaoise MRH	Phased delivery of AMHU anti-ligature works.	Tender
Community Services			
11258	Monasterevin, Drogheda	Renovation of existing building (dispensary) to provide accommodation for an Older Person Day services unit and PCC services.	Complete
11340	Castle Street Clinic, 37 - 41 Castle Street, Dublin 2	Phased upgrade of existing building to continue to deliver alcohol and drugs related specialist services as part of health & Social care network.	Complete
11532	Cherry Orchard Hospital	Project to carry out structural repairs to sub-floor in en-suites and circulation corridors in Willow & Sycamore units and address identified fire risk items.	Construction
11597	Cherry Orchard Hospital	Fire safety, Infection Control Risk and electrical upgrade project in Aspen, Hazel, Popular & Beech units to address Fire Safety issues in existing elderly care and dementia units.	Complete
11605	Cherry Orchard Hospital	1st phase of decommissioning the centralised boiler and heating distribution pipes for campus heating and replace with localised heating in individual buildings using high efficiency condensing gas burners-boilers.	Construction
11629	St. Vincent's Athy	Renovation of an existing vacant nightingale ward to convert it to a Day Care Centre. Existing Day Care Centre will relocated to the refurbished area.	Tender
11630	Kilmeague Health Centre, Co. Kildare	Renovation and conversion of the vacant Kilmeague Health Centre for use as Community Day-care / Meals on Wheels run by St Vincent de Paul under SLA. Facilities would include dayroom, dining facility, toilet and showering facilities, Office, treatment room and kitchenette for use by approx. 20 clients.	Tender
11786	Cherry Orchard Hospital	Concrete façade repair works to window heads and sills, plus repairs to the walkway canopy linking Bridge House to the canteen building. To replace the existing roof finish and upgrade with an insulated roof.	Construction
11812	Various	Completion of fire upgrade works (fire door upgrades, compartmentation/ sub-compartmentation, fire stopping, upgrades of ceilings) to 6 no. midlands CNU's following completion of Fire Risk Assessments. (Mountmellick CNU, Mountmellick; Abbeyleix CNU, Abbeyleix; Shaen Hospital, Portlaoise; Riadha House CNU, Tullamore; Offaly House CNU, Edenderry; Cluin Lir, Mullingar).	Construction
11923	St. Vincent's Athy	Passive and active fire safety works including the upgrading of Fire Detection & Alarm System, Installation of a new Addressable Emergency Lighting System, upgrade of doors, replacement of doors, fire glazing, upgrade of compartments and fire resisting barriers, fire stopping etc.	Construction
13018	Peamount Hospital, Newcastle	Reconfiguration of an existing 18-bed High Dependency unit (Hollybank) for older Intellectual Disability Clients. Works necessary to meet Covid Social Distancing and are also stipulated necessary by HIQA to gain re-registration (HIQA notice letter received). Unit will be reconfigured from multi-occupancy to 11x1-bed + 2x2-bed units + necessary social distancing break-out space for 15 clients.	Complete
Corporate			
11199A	Dr. Steeven's Hospital - HSE HQ	Demolish HIU building, structural repairs to clock tower & boundary wall.	Complete
11823	Dr. Steeven's Hospital - HSE HQ	Project to install a new fire detection system & alarm system, and install a new emergency lighting system including escape exit signage.	Construction
Primary Care			
11998	Merchants Quay, Dublin 8	HSE funding to support the refurbishment and extension of property for Merchants Quay Ireland (Homeless & Drugs Service) to provide Medically Supervised Injecting Facility.	Construction



Appendix 1

Projects at Tender Stage, beyond Tender Stage* and Contractually Committed in 2025 (as of 09/10/24)

Funding source is the Department of Health

*All projects at Tender Stage are intended to progress to Construction in 2025

Capital Reference No.	Facility	Brief Project Description	Status
Community Care (HIQA) Older Persons			
11702	HIQA - St Vincent's Mountmellick	Phase 1 of HIQA compliance programme of works for the 50 bed new unit.	Construction
11706	St Joseph's Care Centre, Longford	HIQA Compliance - New build 43 bed Community Nursing Home including Palliative Care. (68 beds in total on site, remainder stay as is).	Tender
11707	St Vincent's Care Centre, Athlone	Replacement Community Nursing Unit of St Vincent's Care Centre, Athlone - Older Persons Services (50 beds) - PPP	Construction

HSE Dublin & South East

Acute Projects			
10727	St. Luke's Hospital, Kilkenny	Phase 1 of the redevelopment of St Luke's, to include a new ED, Medical Assessment Unit and Day Services Unit (including Endoscopy) - and relocation of Education Centre.	Complete
10908	St. Vincent's University Hospital	Relocation of NMH Holles St to the SVUH Campus.	Tender
11280	Wexford General Hospital	Design, Construction and Equipping of a new MRI facility located on a site close to the Main Hospital concourse building and adjacent to existing Emergency Department.	Tender
11301B	St. Vincent's University Hospital	In accordance with the Acute Inpatient Bed Capacity Expansion Plan, develop a 6 bed Critical care unit by refurbishing St Patricks Ward on the fourth floor of Block H. The new ICU ward will have direct connectivity to the existing ICU in Block N on the same Floor level which will allow for shared schedule of accommodation. Proposal replaces previous proposal.	Construction
11540	St. Vincent's University Hospital	Fire Safety upgrade works including Fire Alarm & compartmentation	Construction
11614	St. Vincent's University Hospital	Fire Safety upgrade works including passive Fire Safety works.	Tender
11716	St. Vincent's University Hospital	New electrical substation (Energy Centre) at Block 5 that will serve Blocks H, P & S of St. Vincent's University Campus. This will consist of 2 no. transformers backup up by 2 no. standby generators to provide electrical redundancy.	Construction
11737	Wexford General Hospital (Ely Hospital)	Renovate and improve the existing Endoscopy service and old Theatre space at Ely Hospital to include 2 fully compliant endoscopy rooms and a minor procedures room.	Construction
11780	NMH Holles Street	Fit out existing shell & core space to facilitate ambulatory gynaecology care facility.	Tender
11781	Wexford General Hospital	Project to increase CSSD capacity by providing additional washers and dryers, improve zoning for clean / dirty segregation and process flow, provide new ventilation system and RO plant.	Construction
11800	Wexford General Hospital	Fire damage restoration works.	Complete
11804	RV Eye & Ear Hospital	Project to upgrade of Fire Alarm and emergency lights - Phase 1.	Tender
11805	RV Eye & Ear Hospital	Fire safety improvement project to repair and re-certify or replace fire doors, as required.	Tender
11806	St. Michael's Hospital, Dun Laoghaire	Reconfiguration of existing clinic space to include: waiting area, new Interview room and toilets together with the replacement of the existing heating system, ventilation installation and general IPC works.	Construction
11829	NMH Holles Street	Campus electrical upgrade and resilience project including: 1. Replacement of below ground Low Voltage cables feeding the NMH due to age, fatigue and increased overall load. 2. Install Emergency Generator 'Tie In Points' – required due to the single Primary Electrical Supply, Transformer and Switch arrangements. 3. Replacement of one of the existing generator with a new 1500kVA unit 4. Incorporate an electrical load shedding strategy of non-essential services (58-61 MSH) in combination with Phase Failure Relays for other loads such as the Autoclaves & Washers. 5. The rebalancing of the electrical loads equally throughout the hospital across 3 phases.	Construction
11839	St. Luke's Hospital, Kilkenny	In accordance with the Acute Inpatient Bed Capacity Expansion Plan. Surgical 2 ward (29 beds) is vacant and will be refurbished to accommodate beds transferred from Surgical 1 ward. Surgical 1 ward will then be refurbished to accommodate 14 beds. Medical 1 ward is vacant and will be refurbished to accommodate 14 beds from Medical 2 ward (currently 29 beds) along with space for a Paediatric day unit.	Construction
11892	University Hospital Waterford	To develop a Surgical Hub facility for the South East area to include 2 Operating Theatres & 2 Minor Procedure Rooms including recovery / post anaesthetic unit and associated support services and staff facilities.	Construction
12036	St. Vincent's University Hospital	Installation of 7 No. dedicated AHU's for ICU isolation rooms in the Clinical Services Building.	Construction



Appendix 1

Projects at Tender Stage, beyond Tender Stage* and Contractually Committed in 2025 (as of 09/10/24)

Funding source is the Department of Health

*All projects at Tender Stage are intended to progress to Construction in 2025

Capital Reference No.	Facility	Brief Project Description	Status
Enhanced Community Care			
13208	HUB 18 - Carrickmines	Fit out of the Iveagh Building (leased) to allow the decant of Bray Civic Centre for use by ECC.	Tender
13236	HUB 14 - Waterford	New CHN storage unit (Dungarvan).	Construction
13246	HUB 13 - Kilkenny	Fit-out of Oriel House, Outrath, (leased) to facilitate the Integrated Programme Older Persons (ICPOP) Team.	Construction
13250	HUB 15 - St. Patrick's Hospital, Cashel	Refurbishment of St Patricks Hospital, Cashel to provide interim accommodation for CHN teams for Central Tipperary.	Construction
Mental Health			
11374	Dungarvan	Purchase and replacement of dwelling at Sea Breeze, Youghal Rd, Dungarvan for residents of Springmount at Dungarvan Community Hospital.	Complete
11487	Mount Carmel Campus	The provision of accommodation in the vacant convent for an Eating Disorder Specialist Hub.	Construction
11613	Newcastle Hospital	Clean up and restoration works following oil leak.	Construction
Community Services			
11723	Leopardstown Park Hospital	Reconfiguration of 4 x Nightingale Wards in order to sub-divide each ward into 2 x 4-bed rooms and 2 x 1-bed rooms. The project will include a rewire of electrical services, upgrade of heating system, upgrade of fire compartmentation to suit the revised layout, new suspended grid ceiling and decoration of all 4 x nightingale wards.	Complete
11724	Leopardstown Park Hospital	Replace the main electrical distribution board (DB2) serving the campus along with the existing sub distribution boards fed from DB2. The sub mains cables will also be upgraded.	Complete
Primary Care			
11481	St. Otteran's Hospital	Development of Audiology Services & new Orthodontic development at rear block, ground floor of vacant St Otterans building.	Construction
Community Care (HIQA) Older Persons			
10868	St Coleman's, Rathdrum	Replacement Community Nursing Unit of St Coleman's, Rathdrum - Older Persons Services (95 beds), as per Service Priority List.	Tender
11332	St Columba's Hospital, Thomastown	Replacement Community Nursing Unit of St Columba's Hospital, Thomastown - Older Persons Services (95 beds) - PPP	Construction
11394	Clonmel Community Nursing Unit	New Community Nursing Unit at Clonmel - Older Persons Services (50 beds) - PPP	Construction
HSE South West			
Acute Projects			
10532C	Cork University Hospital	CUH Projects Enabling works (Ring Road, Services, etc.)	Construction
11144	Cork University Hospital	Provision of a new Helipad including enabling works.	Construction
11268A	University Hospital Kerry	Provision of an additional Theatre (Obstetrics) (vertical extension) plus upgrade of existing theatres and plant.	Tender
11412	Bantry General Hospital	Endoscopy Suite. Enabling works complete - MV LV upgrade	Complete
11413	Bantry General Hospital	In accordance with the Acute Inpatient Bed Capacity Expansion Plan, Stroke Rehabilitation Unit - 12 Bed	Tender
11480	Cork University Maternity Hospital	Supply and Installation of Mechanical Air Conditioning to the Cork University Maternity Hospital	Complete
11569	University Hospital Kerry	Reconfiguration of existing HDU to deliver five (1 new and 4 replacement) post Covid HDU compliant beds with 2 No. single rooms and 3 No. enclosed cubicles in an existing ward previously used for day surgery.	Complete
11592	Cork University Hospital	Repurposing of existing OPD accommodation to create the dedicated paediatric area (8 No. treatment cubicles & waiting area) to provide separation of paediatric patients from the main ED area. The existing paediatric space in ED to be converted to Four adult RASSTA space. Rapid Assessment Treatment area. Supported by CUH charity.	Complete
11611	Cork University Hospital	Replacement of cladding, CRC (Cardiac Renal Centre) building	Construction
11783	Cork University Hospital	New CT scanner housed with control room, contiguous with two trauma bays, family rooms, a decontamination room, etc. to be able to offer a resuscitation facility for major trauma centre designation / reception.	Tender
11794	Cork University Hospital	Purchase and fit out of existing building (UTC 4, Curraheen, Cork) for use as an Out-patient Department. Project will support the development of clinical facilities at CUH.	Tender



Appendix 1

Projects at Tender Stage, beyond Tender Stage* and Contractually Committed in 2025 (as of 09/10/24)

Funding source is the Department of Health

*All projects at Tender Stage are intended to progress to Construction in 2025

Capital Reference No.	Facility	Brief Project Description	Status
11841	Cork University Hospital	Purchase and fit out of building at Cork Business & Technology Park, Model Farm Road, Cork (former Abtran building) to accommodate non patient facing personnel from CUH.	Construction
11897	Cork University Hospital	To develop a Surgical Hub facility for the Southern area to include 2 Operating Theatres & 2 Minor Procedure Rooms including recovery / post anaesthetic unit and associated support services and staff facilities.	Construction
11988	University Hospital Kerry	Building purchase and fit out to allow for the relocation of the Women's Health Team from UHK. Building location is John Joe Sheehy Road, Tralee.	Tender
15060	Cork University Hospital	18 beds in vacated ophthalmology (in construction) plus phase 2 works to Blackwater suite.	Construction
Mental Health			
11733	Carraig Mór Centre, Shanakiel	Phase 1: Reconfiguration and extension of Carraig Mór to provide 18 no single bedrooms (replacement) with en-suites and additional communal floor space for residents & support accommodation.	Construction
11920	Bantry General Hospital	Provision of reduced ligatures across the approved mental health centre addressing the regulatory findings of the MHC while providing additional communal space for residents of the Approved Centre.	Complete
11979	Midleton	Purchase and refurb of property for the decant of residents during reconstruction of existing Owenacurra Mental Health facility.	Construction
Community Services			
11922	Heather House, St Mary's Health Campus, Cork	Refurbishment and reconfiguration of existing ground floor CNU ward to dementia specific ward and to include new wander route corridor, dedicated support accommodations, bariatric en-suit bedroom, standard bedrooms with en-suites, additional communal spaces and secure outdoor spaces.	Construction
Primary Care			
11079	Cork City North West	Primary Care Centre to be provided on the site of St Mary's Orthopaedic Hospital	Complete
Community Care (HIQA) Older Persons			
10231	Kanturk	Kanturk Community Hospital Extension & Refurbishment - 43 beds	Construction
10824	Cork City	Replacement Community Nursing Unit, South Lee, Cork City, to replace existing long stay beds in St Finbarr's & address capacity deficit - Older Persons Services (105 beds) - PPP	Construction
10905	Middleton CH & Long Stay Unit	Replacement Community Nursing Unit at Middleton CH & Long Stay Unit - Older Persons Services (50 beds) - PPP	Construction
11330	Killarney CNU	Replacement Community Nursing Unit in Killarney - Older Persons Services (130 beds) - PPP	Construction
11681	HIQA - Kinsale	Refurbishment & Extension of Community Nursing Unit at Kinsale - Older Persons Services (40 beds)	Complete
11684	St Patrick's CH Fermoy	Refurbishment & Extension of Community Nursing Unit at St Patrick's CH Fermoy - Older Persons Services (72 beds)	Construction
11687	St Joseph's CH, Millstreet	Refurbishment & Extension of Community Nursing Unit at St Joseph's CH, Millstreet - Older Persons Services (26 beds)	Construction
HSE Midwest			
Acute Projects			
11113	University Hospital Limerick	In accordance with the Acute Inpatient Bed Capacity Expansion Plan, new ward block (4x24 beds). Located over ED and Renal Dialysis Units.	Construction
11113A	University Hospital Limerick	In accordance with the Acute Inpatient Bed Capacity Expansion Plan, construction of phase one of the second intended hospital block as per the site masterplan including basement car parking and shell space at level 0 and level 1.	Construction
11244	University Hospital Limerick	The provision of a new Blood Science & Pathology facility. Phased development. Several key phases already completed and in operation.	Construction
11320	Croom Orthopaedic Hospital	Phased delivery of passive Fire safety upgrade works.	Construction
11417	Ennis General Hospital	Equipping of new OPD, including provision of X-Ray Room and other diagnostics.	Complete
11496	University Maternity Hospital Limerick	Two phase neo-natal expansion: Phase 1 - relocation of clinical staff to modular building is complete. Phase 2 - Neo natal spaces progressing.	Equipping & Commissioning
11861	University Hospital Limerick	To develop a Surgical Hub facility for the Midwest area to include 2 Operating Theatres & 2 Minor Procedure Rooms including recovery / post anaesthetic unit and associated support services and staff facilities.	Tender
12051	University Hospital Limerick	In accordance with the Acute Inpatient Bed Capacity Expansion Plan, 16-bed inpatient emergency ward in courtyard of existing Hospital.	Construction
12051A	University Hospital Limerick	In accordance with the Acute Inpatient Bed Capacity Expansion Plan, 2nd 16-bed inpatient ward unit (Phase 2).	Tender



Appendix 1

Projects at Tender Stage, beyond Tender Stage* and Contractually Committed in 2025 (as of 09/10/24)

Funding source is the Department of Health

*All projects at Tender Stage are intended to progress to Construction in 2025

Capital Reference No.	Facility	Brief Project Description	Status
Ambulance			
10458	Limerick	Provision of a new Limerick Ambulance Base, Rosbrien.	Tender
Enhanced Community Care			
13218	HUB 08 - Nenagh	Equipping of a dedicated area of the Nenagh PCC building to accommodate an ECC Hub	Tender
13237	HUB 08 - Ennis PCC	Equipping of a dedicated area of Ennis PCC to accommodate an ECC Hub. Phase 2 ICPOP Extension to follow.	Equipping & Commissioning
Mental Health			
11919	St. Camillus's Hospital, Limerick	Reconfiguration of Tearmann Unit to include the reduction of multi occupancy dormitories and increasing bathroom facilities on the unit. Tearmann Unit is an approved centre consisting of a 15-bed assessment unit for people with advancing dementia, psychological and behavioural symptoms.	Complete
11997	Inis Gile, Parteen	Refurbishing the existing vacant community nursing unit at Inis Gile for Dual Diagnosis and CAMHS teams	Construction
Primary Care			
11172	Ennis	Residential addiction treatment facility to replace the existing facilities in Bushy Park, County Clare.	Construction
11975	Corporate House, Mungret Street, Limerick	Purchase and energy improvement works of building (currently leased by the HSE) for use by Primary Care Services (Drug and Alcohol Service together with Traveller Health).	Tender
Community Care (HIQA) Older Persons			
10135	St. Camillus's Hospital, Limerick	Phased Replacement & refurbishment of Community Nursing Unit at St Camillus's Hospital, Limerick - Older Persons Services (Phase 1 - 75 beds). Phase 2 to follow.	Construction
10902	St. Ita's, Newcastle West	Refurbishment & Extension of Community Nursing Unit in St Ita's, Newcastle West - Older Persons Services (20 beds - Refurbishment 8 beds & 12 additional bed extension)	Construction
11426	St Conlon's CNU, Nenagh	Replacement Community Nursing Unit in St Conlon's CNU Nenagh - Older Persons Services (50 beds)	Complete

HSE West & North West

Acute Projects			
10674A	Merlin Park University Hospital	To develop a Surgical Hub facility for the West & North West area to include 2 Operating Theatres & 2 Minor Procedure Rooms including recovery / post anaesthetic unit and associated support services and staff facilities.	Construction
10781	Sligo University Hospital	Phased upgrade to existing CSSD.	Construction
11132	Portiuncula University Hospital	New replacement Ward Block (50 Beds) to provide replacement ward accommodation in line with current standards.	Complete
11143A	University Hospital Galway	Interim ED to facilitate service continuity (TED).	Complete
11143B	Merlin Park University Hospital	Ground and First floor Outpatients Department in Merlin Park University Hospital to accommodate the outpatient services which are decanting from University Hospital Galway.	Complete
11283	Mayo University Hospital	Phased electrical upgrade project. Phase 1a & 1b (complete 2022), 1c at construction.	Construction
11351	University Hospital Galway	Phased upgrade and replacement of medium temperature hot water system.	Construction
11393	Letterkenny University Hospital	Fire safety upgrade programme of works consisting of Fire alarm upgrades & new Emergency lighting system.	Construction
11429	Sligo University Hospital	In accordance with the Acute Inpatient Bed Capacity Expansion Plan, additional bed capacity consisting of single en-suite rooms with ancillary accommodation.	Tender
11429A	Sligo University Hospital	In accordance with the Acute Inpatient Bed Capacity Expansion Plan, carpark and associated enabling works to facilitate the provision of a new Ward Block.	Complete
11434	University Hospital Galway	Third Endoscopy suite.	Construction
11448	Portiuncula University Hospital	Fire upgrade works over multiple phase. Phase 1: Fire detection and alarm network complete and Phase 2: FA & emergency lighting medical block	Construction
11587	Letterkenny University Hospital	Extension to Laboratory (Microbiology, Virology and Immunology) to provide capacity for Additional Covid 19 Testing (additional equipment and staff already in place) and to bring the Lab up to current standards (not upgraded post flooding event).	Complete
11588	Merlin Park University Hospital	Development of a Cystic Fibrosis Unit in Merlin Park University Hospital to accommodate an Adult Cystic Fibrosis Outpatient Services and five day service.	Construction
11600	Letterkenny University Hospital	Accommodation for Physio and OT dept. at LUH to reinstate accommodation dispersed due to onsite flooding.	Tender



Appendix 1

Projects at Tender Stage, beyond Tender Stage* and Contractually Committed in 2025 (as of 09/10/24)

Funding source is the Department of Health

*All projects at Tender Stage are intended to progress to Construction in 2025

Capital Reference No.	Facility	Brief Project Description	Status
11616	University Hospital Galway	Relocation of the Public Health Microbiology Laboratory (PHML) to a new building to increase capacity of the PHML and the Dept. of Medical Microbiology generally. Existing PHML space to be used for expanded COVID testing capacity - Interim solution.	Construction
11626	Sligo University Hospital	The Installation of a Second CT scanner, including a new build for the relocation of Nuclear Medicine (Phase 2), reconfiguration of existing Nuclear medicine with extension to take Second CT Scanner accompanying requirements.	Construction
11651	Letterkenny University Hospital	A phased project to repair existing flat roof membrane and balcony spalling repair works.	Tender
11809	Merlin Park University Hospital	New MV sub-station and associated electrical works required to support ongoing and new Capital Projects at MPUH.	Construction
11873	Portiuncula University Hospital	Construction of 2nd MV substation incorporating 2x MV transformers, ring main unit, associated switchgear, LV supply, standby generator etc.	Complete
11915	Roscommon University Hospital	Refurbishment of Radiology dept. to include construction, plant and infrastructure upgrades to facilitate the installation of a replacement CT scanner as part of the ERP.	Construction
11993	University Hospital Galway	Refurbish an existing room within the laboratory to relocate the existing Containment Level 3 (CL3) laboratory to allow the existing containment cabinets to be replaced.	Construction
12058	Daisy Lodge, Cong	New campus/facility (Daisy Lodge) for use as a short break (respite) centre for children undergoing cancer treatment and their families. Facility will include shared spaces, activity areas and outdoor areas. Project is delivery lead is Cancer Fund for Children Ireland with HSE support.	Tender
Radiation Oncology			
10008G	University Hospital Galway	Main contract works for the provision of Phase 2 facilities at UHG Galway.	Complete
Enhanced Community Care			
13202	HUB 04 - Galway City, St. Francis Home	Refurbishment of HSE building (St Francis Home, Newcastle, Galway) to provide clinical space for interim ECC Hub.	Construction
13227	HUB 04 - Galway City, Knocknacarra	Purchase & fit out of Block A Galway West Business Park, Knocknacarra, Galway.	Tender
Mental Health			
10085A	St. Anne's Child & Adolescent Psychiatry	Extension & reconfiguration of existing unit.	Construction
Community Services			
11631	St. Conal's Hospital	St. Conal's Refurbishment - fabric upgrade of Block R.	Construction
Primary Care			
10910	Sligo University Hospital	North West Hospice extension to provide 12 beds (4 additional), outpatient day care & home care team, admin space, 15 car park spaces.	Construction
11740	Tuam	Refurb existing PPP PCC to accommodate an x-ray & ultrasound diagnostic suite (10 rooms) and audiology suite (2 rooms).	Complete
Community Care (HIQA) Older Persons			
10030	Carrick On Shannon	The Project will provide a Community Nursing Unit of 90 beds on a new site.	Tender
10091	Letterkenny	Replacement and Extension of Community Nursing Unit & Medical Rehab in Letterkenny - Older Persons Services (110 beds) - as per Service Priority List (formerly PPP).	Construction
11387	Merlin Park, Units 5 & 6	Replacement of Community Nursing Unit at Merlin Park - Older Persons Services (60 beds, including dementia beds) - formerly PPP	Construction
11660	Falcarragh	Refurbishment of existing Community Nursing Unit at Falcarragh (HIQA agreement to follow Dungloe) - Older Persons Services (35 beds)	Construction
11676	Sacred Heart Hospital, Roscommon	Replacement of Community Nursing Unit at Sacred Heart Hospital, Roscommon - Older Persons Services (50 beds)	Construction
11709	Tuam Community Nursing Unit	Replacement of Community Nursing Unit at Tuam - Older Persons Services (50 beds)	Complete
HSE Centre			
Acute Projects			
11022	Design & Dignity Scheme	The Design & Dignity Grant Scheme provides funding for minor works in Acute hospital and community care environments that will enhance end of life care. This scheme is co-funded (30%) by the Hospice Friendly Hospitals Programme.	Construction
11560	Covid-19 Medical Gases Resilience Project	Essential works required to address deficits in the provision of Medical Gas in a phased basis, highlighted by Covid-19.	Tender



Appendix 1

Projects at Tender Stage, beyond Tender Stage* and Contractually Committed in 2025 (as of 09/10/24)

Funding source is the Department of Health

*All projects at Tender Stage are intended to progress to Construction in 2025

Capital Reference No.	Facility	Brief Project Description	Status
Ambulance			
10010	National	Ambulance Replacement Programme	Programme
Health & Wellbeing			
11108C	National Cancer Screening Service	Equipment Replacement Programme (Breastcheck) 2021 to 2026	Construction
11127	National Fluoridisation Programme	Replacement of Fluoridisation systems in Local Authority Water Treatment Systems	Construction
Mental Health			
11572	National allocation for anti ligature works	National allocation for anti-ligature works	Construction
Local Injury Units			
Various	Local Injury Units	National Programme	Programme
Primary Care			
Various	National	The provision of Primary Care Centres by means of Public Private Partnerships.	Programme
10753	Primary Care Centres	Implementation of Strategy - PM, Telephony and Equipping Costs	Equipping & Commissioning
Community Care (HIQA) Older Persons			
12054	Various	Community based funding package to support a refurbishment programme, including upgrades to food preparation and equipment for Older Persons Community Day Centres, as outlined in published Capital Plan 2024	Programme
11259A	CNUs Replacement	The provision of replacement CNUs by means of PPP(s) as part of the Government's Capital Review announced by the Minister of Performance, Expenditure & Reform on 29th Sept 2015 - Enabling Works & VAT	Construction
11259B	CNUs Replacement	The provision of replacement CNUs by means of PPP(s) as part of the Government's Capital Review announced by the Minister of Performance, Expenditure & Reform on 29th Sept 2015 . Unitary Charge - Sites 3 - 9.	Construction



Appendix 2

New Projects and Projects to Progress Through Design (as of 09/10/24)

Funding source is the Department of Health

Capital Reference No.	Facility	Brief Project Description	Status
HSE Dublin & North East			
Acute Projects			
11337	Beaumont Hospital	New Emergency Department and reconfiguration of existing department - including road realignment.	Detailed Design
11338	Rotunda Hospital	Acute Care Block, NICU & other priorities.	Detailed Design
11564	Beaumont Hospital	Freehold Acquisition of Beaumont Convent & upgrade for admin accommodation (119 spaces).	Detailed Design
11586	Mater Misericordiae University Hospital	Mater Major Trauma Centre Phase 2 - Scope to be determined but may consist of elements of a New Trauma Wing ICU Beds; inpatient beds; Theatre Spaces; New Laboratory; ED Extension, Clinical Support Space; General Admin Space; Facilities Management space; And additional Radiology (CT and MRI).	Design Feasibility
11643	National Orthopaedic Hospital Cappagh	In accordance with the Acute Inpatient Bed Capacity Expansion Plan, 10 bed HDU (7 replacement and 3 additional) & 76 (30 replacement & 46 additional) bed single occupancy ward block and 3 theatres. Project also includes a new OPD, pre-assessment clinic, admissions dept., dayward associated campus works, connecting link to the existing Hospital & site works etc.	Design Feasibility
11644	National Orthopaedic Hospital Cappagh	New building to provide additional paediatric radiology, ultrasound imaging and treatment facilities (ground floor), Hospital storage facilities (basement) and a 'shell and core' first floor that can be fitted out in the future to expand the Hospital's education and research activities.	Detailed Design
11650	Cavan General Hospital	New 3 storey extension block to the northern side of the existing front hospital entrance to provide Oncology Unit (70% additional capacity). Upgrade of the existing Pharmacy and a new Aseptic Unit. Relocation of the Physio Dept. from the HSPC inpatient assessment area and allow the HSPC space to become an 8 bed day ward/post theatre recovery area (works to HSPC not in this project). Medical training element removed for NC&PSC.	Detailed Design
11714	Our Lady's Hospital, Navan	Upgrade of Our Lady's Hospital Electrical Power Infrastructure from a LV supply to a MV supply. Installation of a new LV Main Distribution Board & Upgrade of electrical backup provision.	Detailed Design
11717	Beaumont Hospital	Provision of 64 Critical Care beds over four floors (16 beds per floor) in a new building. A decant of the existing Endoscopy Dept. to a new two storey building (7 No. procedure rooms) is required to create a site for the Critical Care Unit.	Design Feasibility
11739	Connolly Hospital Blanchardstown	Ground Floor - 2nd CT: Extend Radiology & provide 2nd CT First Floor - Replace 5 existing ICU beds with HTM / HBN compliant ICU beds. These 5 ICU beds together with an existing ICU isolation room will provide 6 ICU beds in total. The remaining 4 beds in the existing ICU footprint will be converted to a 4 bed CCU. The existing ground floor CCU ward will be used to provide general ward bed accommodation for up to 6 patients.	Detailed Design
11762	Connolly Hospital Blanchardstown	Project to replace (phased) ventilation systems in Theatres, ICUs, some isolation Rooms, CCU and endoscopy, as well as stabilise/ mitigate certain risks during replacement.	Detailed Design
11782	Beaumont Hospital St. Joseph's, Raheny	Proposed stand-alone diagnostic centre on the St Joseph's site under the governance of Beaumont Radiology Dept. The development will consist of: 3 Ultrasound Rooms, 4 X-Ray rooms, Radiology led CT and MRI, Cardiology led CT and MRI & Relevant support services.	Detailed Design
11844	Connolly Hospital Blanchardstown	New Elective Hospital	Appraisal
11865	Beaumont Hospital	Upgrade inner MV ring main to cater for proposed new developments and Climate Action requirements: -New energy centre for future developments -Electrical infrastructure to facilitate new sub-station -Upgrade existing sub-stations & infrastructure - Additional generator capacity and space for future -New MV and LV feeder cables Works will increase capacity from 2.0MVa to 11.4MVa	Detailed Design
11866	Beaumont Hospital	Proposed road realignment to improve access to critical infrastructure and development areas. Includes new cycling infrastructure.	Detailed Design
11867	Beaumont Hospital	Construction of additional Car Park deck (additional deck) with Solar PV Canopy.	Appraisal
11868	Beaumont Hospital	Construction of new three storey suspended car park deck(s) with a solar PV canopy, above the existing southern surface carpark (car park 10). Land currently occupied by 400 car parking spaces will be used to facilitate a number of campus development projects (incl new Emergency Department, NPRO Phase 2)	Detailed Design
11871	Connolly Hospital Blanchardstown	Provision of a second MRI Scanner Suite, between the radiology and outpatients depts.	Appraisal
11872	Connolly Hospital Blanchardstown	In accordance with the Acute Inpatient Bed Capacity Expansion Plan, proposed project to provide a 96 single in-patient bed ward block (48 replacements and 48 additional), 8 theatres (5 No. to replace existing and 3 No. shell and core floors), new out patients department to replace existing. The endoscopy service will expand into the vacated theatres on completion of the project.	Appraisal



Appendix 2

New Projects and Projects to Progress Through Design (as of 09/10/24)

Funding source is the Department of Health

Capital Reference No.	Facility	Brief Project Description	Status
11935	Our Lady of Lourdes Hospital, Drogheda	In accordance with the Acute Inpatient Bed Capacity Expansion Plan: New ward block with inpatient beds, Endoscopy Day Services & Trauma Services	Appraisal
11937	Rotunda Hospital	Proposed upgrade of campus electrical services. Feasibility study to be completed initially.	Appraisal
11981	Rotunda Hospital	Purchase & Fit Out of 1, 2 & 3 Dominick Street, Dublin 1 to allow the relocation of Laboratory, EPAU & Gynaecology Services to facilitate the Critical Care Wing Development.	Detailed Design
12029	Mater Misericordiae University Hospital	In accordance with the Acute Inpatient Bed Capacity Expansion Plan, new ward block to include inpatient beds, operating theatres, diagnostics, OPD and infusion suite.	Appraisal
12039	Connolly Hospital Blanchardstown	Construction of additional road network to allow greater access to public transport. Project will provide bus and cycling infrastructure as per Bus Connects plan.	Detailed Design
13064	Beaumont Hospital	In accordance with the Acute Inpatient Bed Capacity Expansion Plan, construction of a new 95 Inpatient Bed Accommodation. The project will include 19 ensuite bedrooms per floor, with 2 per floor facilitating full isolation, full support facilities along with a component of back up stores and staff changing along with relevant building interconnections to existing hospital buildings.	Detailed Design
13068	Our Lady of Lourdes Hospital, Drogheda	Replacement of existing OPD Modular building to Crosslanes (20 years old and in poor condition- roof collapse) with an extended Multi-storey building (Phase 1 OPD). This will provide improved and additional Outpatients capacity and improved social distancing.	Detailed Design
11188A	Cavan General Hospital	New multi-storey extension block housing a New Endoscopy Unit (3 No. procedure & 2 No. recovery rooms), 18 bed ward accommodation (16 No. single rooms with ensembles) (and 2 no of isolation rooms) and the relocation of the existing ED Department (2 No. Resus, 10 No. Majors, 6 No. Minors, 3 No. Paediatrics & 3 No. Isolation rooms). 2 additional floors now added 2x 18 beds	Detailed Design
11585B	Mater Misericordiae University Hospital	Major Trauma Centre Phase 1C - involves the provision of a rooftop helipad on top of the existing 112 bed ward block and associated ancillary accommodation.	Detailed Design
Radiation Oncology			
10008F	Beaumont Hospital	The provision of Phase 2 facilities at Beaumont Hospital (includes equipping). 3 Enabling works packages.	Detailed Design
Ambulance			
10461	Dundalk	New ambulance station on a green field site in Dundalk. Accommodation will consist of general admin, office, rest and staff rooms, kitchenette & dining, toilets & stores, sluice and laundry rooms, staff changing & locker rooms, ICT room, training & meeting rooms, record room, plant room, 3 vehicle garage and canopy for 16 vehicles with a wash bay.	Appraisal
Enhanced Community Care			
13216	HUB 27 - Ballymun PCC	Reconfiguration of existing Primary Care Centre administration areas for the provision of Enhanced Community Care complete with ancillary site works. (Includes fitout of Tusla space in Ballymun).	Detailed Design
13217	HUB 30 - Corduff PCC	Extension to HSE owned Corduff Primary Care Centre to provide for Enhanced Community Care complete with ancillary site works. It is proposed to expand the existing building with an additional wing of clinical rooms and admin space for the Connolly CDM team & Blakestown CHN.	Detailed Design
13247	HUB 25 - Boyneview House, Drogheda	Reconfiguration and refurbishment of HSE Boyneview House - interim solution for ICPOP & CD	Detailed Design
13256	HUB 02 - Cavan General Hospital	New building to house ECC Hub to provide a base for a ICPOP & ICPCD. Provision of a new CDM Hub on the grounds of CGH	Detailed Design
Mental Health			
11502	Finglas	Provision of a purpose built 10 bed High Support Community Residence to provide accommodation for the residents of Cherrymount, North Circular Road. Purchase of site in 2020.	Detailed Design
11516	Mater Misericordiae University Hospital	New 55 (51 replacement (some from St Vincent's, Fairview) & 4 new) Bed AMHU, incl 42 adult inpatient beds, 7 High Obs beds, & 6 Psych of Old Age Beds. Major refurb of old Mater & extend	Detailed Design
11517	Swords	Provision of a purpose built 10 High Support Community Residence to provide accommodation for the residents of Carlton House. Site purchased 2021 (revenue)	Detailed Design
11599	Our Lady of Lourdes Hospital, Drogheda	Psychiatry of later life unit (POLL) – proposed 10 bed extension. Feasibility Study completed.	Detailed Design
11918	Cavan General Hospital	New 30 bed AAMHU to replace existing 25 bed unit on the grounds of Cavan General Hospital.	Appraisal (to progress to Detailed Design in 2025)



Appendix 2

New Projects and Projects to Progress Through Design (as of 09/10/24)

Funding source is the Department of Health

Capital Reference No.	Facility	Brief Project Description	Status
Corporate			
11201	Grangegorman	Seed-funding capital investment in order to realise the maximum equity from the site via the provision of Design Development Works & Demolition Works including exploration of a new Health Service HQ at the entrance to the Grangegorman Campus on part of commercial development site.	Appraisal
11821	Parkgate Street	Optimisation of existing Financial Shared Services office space in Block D Parkgate Place through refurbishment, and over time convert Block D from multi-service to FSS over a phased basis.	Appraisal
Primary Care			
10122	Finglas	Primary Care Centre incl purchase of site. To also accommodate Tusla.	Detailed Design (to progress to Tender Stage, subject to statutory approvals)
11578A	1-3 and 5 Henrietta Place, Dublin 1	Refurbishment of existing building to integrate a number of social inclusion series into a single campus.	Appraisal
11728	Ballyconnell	Proposed new Primary Care Building, (incl adult and child primary care services). Band A for population up to 10,000 with a 2 Dental Surgery facilities.	Appraisal
11771	St. Mary's, Phoenix Park	Keltoi is residential accommodation for Social Inclusion Addiction service clients. Project is a total refurbishment including the installation of ensuite WCs to 14 no. bedrooms & refurb of entire unit to meet Building Regulations (fire safety, lighting, heating, energy etc).	Appraisal
11795	7 Henrietta Place, Dublin 1	Purchase & refurbishment of 7 Henrietta Place, Dublin 1 for expansion of existing accommodation and use by social inclusion services for the migrant population. Accommodation will include 2 No. clinical rooms, 4 No. consultant rooms, 2 No. dental rooms, dental x-ray and associated accommodation.	Appraisal
11854	Ballymun	Construction of a new building and the refurb of the existing Domville House (protected structure) to provide a mental health day hospital, accommodate mental health teams and dispensing and consultation teams for addiction services.	Appraisal
11855	Blanchardstown	This project involves the construction of a new building and the demolition of the existing building (Mountview Health Centre) to provide a mental health day hospital, accommodate mental health teams and dispensing and consultation teams for addiction services.	Appraisal
11921	110 Amiens Street, Dublin	Purchase & refurbishment of 110 Amiens Street for Social Inclusion and Mental Health Services to facilitate decant and surrender of City Clinic, 108-109 Amiens Street. Development of Addiction and Mental Health Dual Diagnosis, Homeless and Community Health Hub.	Appraisal
11960	Cavan	Purchase & refurb of existing building (Liberty Insurance Building, Cavan Town).	Appraisal
Community Care (HIQA) Older Persons			
11178	Grangegorman	95 Bed Community Nursing Unit in conjunction with Mental Health accommodation (10 beds) plus carpark.	Detailed Design
HSE Dublin & Midlands			
Acute Projects			
11022E	Naas General Hospital	This project involves the development of a suitable new mortuary at the Naas General Hospital . The development will include for a chapel of rest, family room, counselling room, PM room, bereavement office, and associated rooms.	Appraisal
11092	Naas General Hospital	Day Procedures Unit, Oncology & Physical Therapy Unit - provision of a replacement Endoscopy Suite. Naas Acute Mental Health Unit to be constructed in advance in accordance with recently completed Development Control Plan (see Cap Ref #11271 Lakeview, at Detailed Design stage).	Appraisal
11334	Regional Hospital Mullingar	Phase 3. Including replacement Ward accommodation, Theatre Department and Emergency Department.	Appraisal (to progress to Detailed Design in 2025)
11388	MRH Tullamore	Pharmacy Reconfiguration & Extension	Appraisal
11445A	St. James's Hospital	The existing 'Burns Unit' in St James's Hospital is a 14-Bed Unit of 8 Nr single rooms and a 6 Bedded Ward. The reconfiguration of the Burns Unit is a 3 Phased Project. Phase 2 & 3 are in design feasibility. Phase 2 & 3 will deal with the physical reconfiguration of the Unit into 10 Nr single rooms, including 2 Nr single isolation rooms and physiotherapy.	Design Feasibility
11653A	Tallaght University Hospital	Phase 2 electrical resilience programme in Tallaght University Hospital. Replacement of transformers at substations 1 & 3, provision of LV generation at substations 1, 3 & 4, upgrade of obsolete MV switches at substations 1, 3 & 4 & new Transformer rooms and associated enabling/ builders work.	Detailed Design



Appendix 2

New Projects and Projects to Progress Through Design (as of 09/10/24)

Funding source is the Department of Health

Capital Reference No.	Facility	Brief Project Description	Status
11726	St. James's Hospital	Provision of an eight storey Critical Care ICU (increased capacity) and replacement Burns Unit. Project also includes a new ward block for decant and a new OPD at Davitt Road, so as to create a site at St James's Hospital.	Design Feasibility
11744	Tallaght University Hospital	In accordance with the Acute Inpatient Bed Capacity Expansion Plan, build of 98 additional inpatient room facility, 8 room Endoscopy unit complete with central decontamination facilities & Oncology Day Care unit as a 5-story new build, green site extension to the existing hospital.	Design Feasibility (to progress to Detailed Design in 2025)
11744A	Tallaght University Hospital	In accordance with the Acute Inpatient Bed Capacity Expansion Plan, relocate 27 bed Medical Short Stay Block (Enabler for Ward Block)	Appraisal
11745	Regional Hospital Mullingar	Refurb of vacated OPD to provide acute floor adjacent to ED for segregated waiting areas and streamlined services.	Appraisal
11754	MRH Tullamore	In accordance with the Acute Inpatient Bed Capacity Expansion Plan, new ward block including extension to the existing Emergency Department.	Appraisal (to progress to Detailed Design in 2025)
11757	Regional Hospital Mullingar	Overall refurbishment for kitchen: fabric, systems, services, equipment.	Appraisal
11776	MRH Tullamore	Reconfiguration of existing space in the existing Renal Department to provide additional dialysis treatment spaces (1 No.), storage and 2 additional neutral pressure isolation rooms.	Detailed Design
11825	MRH Tullamore	Oncology day ward extension including masterplanning exercise.	Appraisal (to progress to Detailed Design in 2025)
11827	St. James's Hospital	Proposed biobank with physical biobank and biocomputing infrastructure for medical research. 4 storey building as an extension to St. James's Hospital Mortuary.	Detailed Design
11828	St. James's Hospital	Cancer Care - Phase 1 project to provide a Multi-storey facility with 150 single inpatient rooms for medical oncology, and malignant haematology patients; 20 patient consultation/ examination rooms; 50 haematology oncology day treatment rooms; 6 minor procedure rooms and 6 operating theatres. Radiation Oncology (PH II) to be included in Phase 2 of this project.	Appraisal
11844A	Crumlin, Our Lady's Hospital for Sick Children	New Elective Hospital	Appraisal
11899	The Coombe Hospital	Electrical upgrade/replacement works involving replacement & rewiring of sub-distribution boards in various locations on the campus and associated builder's works.	Detailed Design
11900	Naas General Hospital	15 cubicle transition unit for patient admissions and discharges, to alleviate ED admission pressure, via refurbishment of an existing area in OPD.	Detailed Design (to progress towards Tender Stage in 2025)
11903	Naas General Hospital	Upgrade/replacement works to passive and active fire safety protection features throughout the hospital campus including additional means of escape from specific areas (Liffey Wards). Regularisation Fire Safety Certificate.	Design Feasibility
11904	St. James's Hospital	Campus Electrical upgrade: Phase 1: Replacement of two existing transformers & LV Distribution board in the Energy Centre. Installation of LV Substation metering. Phase 2: Increase backup capacity to N+1 by installing one new 2MV backup generator (brings overall number to 3Nr generators. Replacement of two MV ring main units.	Detailed Design
11906	St. James's Hospital	Expansion (phased) of the existing Haematology/Oncology Day Centre into a vacant adjacent space. Project will increase consulting rooms from 11 to 25, oncology treatment couches from 18 to 31 oncology and 12 haematology, apheresis treatment bays from 2 to 5, isolation rooms from 3 to 5.	Design Feasibility
11931	St. James's Hospital	New Integrated Urgent Care/Diagnostic Centre is as follows located on HSE & St. James Hospital site at 162-165 James Street. Centre will include clearance of existing site, new build consisting of 5 stories including Basement Carparking, Diagnostic Services (3No.X-Ray, 3No. MRI & 1No. CT), Cafe/Retail, 48No. Consulting suites (16No Consulting suites per floor), Multipurpose Rooms, Support & Ancillary Spaces.	Appraisal
11932	St. James's Hospital	DCP for Davitt Road Campus and SAR/PBC for proposed Phase 1 & 2. Phase 1: Outpatients and Diagnostic Facilities Phase 2: Acute Health Inpatient Unit Phase 3: Day Surgery Phase 4: Rehabilitation/ Long Term Care Phase 5: Primary Care	Appraisal
12012	St. James's Hospital	In accordance with the Acute Inpatient Bed Capacity Expansion Plan, proposed new multi-storey ward block. The ward block will require works to clear a site for the ward block. This block is proposed as Phase 1 of future developments.	Appraisal
12026	St. James's Hospital	Demolition of former (derelict) HSE Dental building, road widening and improvements.	Detailed Design
12027	St. Luke's Hospital, Rathgar	Development Control Plan for Saint Luke's Hospital Campus.	Appraisal
12032	St. James's Hospital	Reconfiguration of the existing Electrophysiology Laboratory to increase footprint.	Appraisal
12033	St. James's Hospital	Reconfigure and expand the existing ED accommodation to provide a new public entrance and new ambulance entrance, expanded waiting area and triage cubicles, relocation of 2no. Existing isolation rooms, relocation of mortuary viewing/relatives room, part of a new FM Link Corridor to link to the NCH.	Design Feasibility
15048	Portlaoise MRH	Placeholder for project included in Acute Inpatient Bed Capacity Expansion Plan 2024-2031. Capital Submission to be progressed.	Appraisal



Appendix 2

New Projects and Projects to Progress Through Design (as of 09/10/24)

Funding source is the Department of Health

Capital Reference No.	Facility	Brief Project Description	Status
Radiation Oncology			
10008H	St. James's Hospital	The provision of Phase 2 facilities at St James's Hospital.	Appraisal
11907	St. Luke's Hospital, Rathgar	New Main Electrical Distribution Board, new Generator and new switch gear.	Detailed Design
11908	St. Luke's Hospital, Rathgar	New Nuclear Medicine Gamma Camera scanner room and control room (modular) and ground works to house replacement Gamma Camera. Replacement equipment is listed in ERP.	Detailed Design
12034	St. Luke's Hospital, Rathgar	Upgrade Boiler House 1 and replace old and end of life Mechanical Plant, i.e. Calorifier's, old domestic water pipework, valves & pumps. Replacement of old pipework, isolation valves and pumps.	Appraisal
Ambulance			
11530	Athlone Ambulance Base	New ambulance station on a green field site in Athlone. Accommodation will consist of general admin, office, rest and staff rooms, kitchenette & dining, toilets & stores, sluice and laundry rooms, staff changing & locker rooms, ICT room, training & meeting rooms, record room, plant room, 3 vehicle garage and canopy for 16 vehicles with a wash bay.	Appraisal
11579	Glen Abbey, Belgard Road, Tallaght	New Ambulance Base at the HSE owned Glen Abbey complex, Belgard Road, Dublin. This base replaces the Tallaght base operating from a leased facility at Airton Road. Base will also house NAS Critical Care Retrieval Services (NAS CCRS) operating from Cherry Orchard. Base will also provide resilience for the National Emergency Operations Centre (NEOC).	Detailed Design
11958	Tullamore Ambulance Base	New standalone Ambulance Base on a greenfield site incorporating Emerging Threat Team (ETT) facility, Ambulance Health Region HQ and Training Facility.	Appraisal
Enhanced Community Care			
13209	HUB 19 - City Lodge, The Meath Campus	Refurbish existing HSE building at City Lodge, Meath Campus to provide space for approximately 33 No. staff and meeting space, CD. Protected structure.	Design Feasibility
13215	HUB 22 - St Mary's, Naas	Repurpose and refurbish existing HSE accommodation in St Marys at Naas General Hospital to provide short term accommodation for Enhanced Community Care ICPOP & Chronic Disease Management Services.	Detailed Design
13232	HUB 20 - Cherry Orchard	Proposed construction of a new building at Cherry Orchard to accommodate an ECC Hub 3 CHN teams and expansion space for Ballyfermot Primary Care Centre 2.	Design Feasibility
13241	HUB 23 - Mullingar MRH	New build facility adjacent to new OPD at Mullingar Regional Hospital to provide a Hub for ICPOP and ICPCD. 2 floors with carpark, site works etc.	Appraisal
13242	HUB 24 - St. Fintan's Portlaoise	New build facility to provide both Interim and long-term accommodation solutions on a phased delivery for ICPCDM hubs with ICPOP outreach service. Phase 1 will comprise the Interim hub and phase 2 will involve the fit-out of the remainder of the new build to provide the long-term Hub.	Detailed Design
13259	HUB 19 - Terenure PCC	Proposed new ECC Hub & PCC to house 2 No. GP practices, ECC Hub with 3 CHN teams on a HSE owned site (currently a public carpark). Site is also to incorporate services for: (1) Evergreen Services [older persons services-S39] and (2) Dublin City Council.	Appraisal
Mental Health			
10669A	St. Fintan's, Laois	Refurbishment Works for CAMHS Team 3 in St Fintan's Hospital Portlaoise.	Detailed Design
11271	Naas General Hospital	New 50 Bed Acute MH unit (Lakeview), including 9 Intensive Care Beds, to replace existing.	Detailed Design
11287	Mullingar	Refurb to provide accommodation for MH Day Centre & Rehab psychiatry team at Green Road, Mullingar.	Appraisal
11288	St. Vincent's Hospital, Athlone	New 9 bedded High Support Hostel (all single rooms ensuite) built on the grounds of St Vincent's Hospital Campus in Athlone. This unit will replace the existing Glenavon High Support Hostel which has been determined to be not cost effective to upgrade.	Appraisal
11289	Ashford House, Longford	Proposed new 9 bedded High Support Hostel (all single rooms ensuite) built on the site previously purchased on the Dublin Road, Longford. This unit will replace the existing Ashford House High Support Hostel, Longford.	Appraisal
11290	Bridge Street, Portlaoise	New Community Mental Health day centre, replacing Triogue Bridge Street.	Appraisal
11292	St. Fintan's, Laois	New 20 bed high support Community Residence (2 No. 10 Bed Units).	Appraisal
11321	Celbridge	Hazel Cottage, 8 beds High Support Community Residence and 6 single bed rehab units (apts.)	Detailed Design
11322	Tús Nua, Kildare Town	A High Support Community Residence with 10 ensuite bedrooms & 10 no. one-bedroom, own door units to include outdoor space and indoor communal multi-function area. Refurbish existing protected structure (St. Jude's House) & reconfigure/upgrade existing outdoor space (EVE Harvest) for recovery oriented Horticultural and Recreational programmes.	Detailed Design
11610	Bride Street Health Centre	Complete refurbishment of Bride Street Health Centre to accommodate a Specialist Mental Health homeless MDT (15 people) and the Health Inclusion Team (10 people).	Detailed Design



Appendix 2

New Projects and Projects to Progress Through Design (as of 09/10/24)

Funding source is the Department of Health

Capital Reference No.	Facility	Brief Project Description	Status
11741	Mullingar	Primary Care Unit building, St Lomans Campus Mullingar. Refurbishment, fabric upgrade, lift installation, asbestos removal and upgrade of IT systems for Mental Health Services, Pharmacy, Mental Health Tribunal Suite and HSE office accommodation. Existing services have been decanted elsewhere and the building is currently unoccupied.	Detailed Design
11878	St. James's Hospital	Reconfiguration of the existing Jonathan Swift AMHU. Reconfiguration & extension will consist of relocating the acute ward to the ground floor with access to outdoor space, improve existing PoLL ward at first floor and create a less acute ward at first floor. The bed numbers will reduce from 47 to 40 and bedrooms (12 acute beds, 18 less acute, 10 PoLL). Temporary solution.	Design Feasibility
TBC	Tallaght University Hospital	Replacement Adult Mental Health Unit (AMHU) for Tallaght. Capital Submission to be progressed.	Appraisal
TBC	Davitt Road	Replacement Adult Mental Health Unit (AMHU) for St James unit moving to Davitt Road. Capital Submission to be progressed.	Appraisal
TBC	Bloomfield Hospital, Rathgar	Remediation of fire compartment structures in the buildings of Bloomfield Hospital.	Appraisal
Community Services			
11725	Birr CNU	Project involves the refurbishment of the existing CNU in Birr to provide all single ensuite bedroom accommodation for residents through the construction of extensions and reconfiguration within existing multi-occupancy and two bed rooms to provide 76 single ensuite bed rooms. There are currently 12 no single ensuite bedrooms in the existing facility.	Appraisal
11924	Various	Completion of fire upgrade works (fire door upgrades, compartmentation/ sub-compartmentation, fire stopping, upgrades of ceilings) to 5 no. CNU's following completion of Fire Risk Assessments. (Meath CNU, Baltinglass Community Hospital, Belvilla CNU, Maynooth CNU, Cherry Orchard Hospital).	Design Feasibility
12042	St. Joseph's Care Centre, Longford	Refurbishment of the existing building and infrastructure services. The refurbished building will accommodate existing services (Dental, Orthodontic & Ophthalmology services, MRHM OPD clinics - Paediatric, Gynae & Surgical clinics etc.) and will increase the provision of bookable rooms.	Appraisal
12043	Mullingar	Fit out of rented Reid building for use as administration. Consolidation of administration services will vacate space in Mullingar Health Centre, Primary Care Centres at Harbour Road and Springfield Centre.	Appraisal
13030	Baltinglass Community Hospital	Development of six single en-suite bedrooms within the existing buildings of Baltinglass Community Hospital. The six new bedrooms will be constructed in the location of the existing Day Care Centre and this will require the construction of a new Day Care building on the grounds of Baltinglass Community Unit to relocate the Day Care Centre.	Detailed Design (to progress to Tender Stage, subject to statutory approvals)
Primary Care			
10090	Adamstown	Purchase and fit out of a building for use as a Primary Care Centre, in accordance with the PCC Strategy.	Detailed Design
10880	Mountrath	Proposed Primary Care Centre. Primary Care Centre (66).	Design Feasibility
11004	Rowlagh/ North Clondalkin	Primary Care Centre (originally on PPP list) on site at Collinstown Community College, Neilstown Rd. Includes Community MH Unit & Dental. Ranked No 3. Enabling works tendered.	Appraisal
11160	Drimnagh - Curlew Rd	Primary Care Centre (originally on PPP list) will now be delivered as HSE build. Includes Day Centre for Older Persons.	Detailed Design
11467	Portlaoise	New building on the St Fintan's Campus to create Portlaoise Primary Care Centre.	Detailed Design
11552	Arden Road, Tullamore	The provision of a new build 20 no. single ensuite bedroom palliative care unit with associated ancillary accommodation and day services, outpatient and community home care team accommodation.	Appraisal (to progress to Detailed Design in 2025)
11563	Rathmines Primary Care Centre	Site assembly by HSE for PCC location at Rathmines via property swap with DCC. Guilistan Terrace (DCC), Emmet Rd. HC Inchicore (HSE).	Detailed Design
Community Care (HIQA) Older Persons			
10814	St. Vincent's Athy	Phase 1 of a 92 bed replacement of Community Nursing Unit at St. Vincent's Athy - Older Persons Services (48 beds), as per Service Priority List.	Detailed Design
11698	Our Lady's Hospice, Harold's Cross	HIQA Compliance - Refurbishment - 89 beds.	Appraisal
11702A	HIQA - St Vincent's Mountmellick	HIQA Compliance, Phase 2 & 3, 50 bed new build & 30 bed refurb	Design Feasibility



Appendix 2

New Projects and Projects to Progress Through Design (as of 09/10/24)

Funding source is the Department of Health

Capital Reference No.	Facility	Brief Project Description	Status
-----------------------	----------	---------------------------	--------

HSE Dublin & South East

Acute Projects

10005B	NRH Rochestown Avenue	Redevelopment of Hospital Phase 2. Includes inpatient beds, therapy spaces, OPD and associated support spaces.	Appraisal (Final scope to be agreed and to progress towards Detailed Design stage)
11022F	St. Luke's Hospital, Kilkenny	Refurbishment and extension of the existing mortuary to include a new public entrance and reception area; convert the existing post-mortem room to a family room and kitchen; toilet facilities; deceased member and organ storage area and parking. A new viewing room will be in the new extension.	Appraisal
11301A	St. Vincent's University Hospital	Development a multi-storey building adjacent to the current Nutley Wing to provide a 28 ICU Beds(including 6 isolation rooms), 70 ward beds, 18 day-case rooms, 8 operating theatres (including 2 oversized hi-tech rooms for robotics) and outpatients. Dependent on Energy Centre.	Design Feasibility
11362	Wexford General Hospital	New 97 Bed Replacement Medical Ward Block, including carpark.	Detailed Design
11409	Tipperary University Hospital	New in-patient Ward Block.	Appraisal
11746	University Hospital Waterford	In accordance with the Acute Inpatient Bed Capacity Expansion Plan, 96 bed ward block (additional) over 5 stories.	Appraisal (to progress to Detailed Design in 2025)
11746A	University Hospital Waterford	In accordance with the Acute Inpatient Bed Capacity Expansion Plan, enabling works: Car park Multi-storey, electrical capacity etc.	Appraisal
11779	NMH Holles Street	Provision of a new external lift core to supplement the existing lift cores within the National Maternity Hospital to mitigate against the Hospital risk register item. The location is at the front of the facility which does not impact on the existing facility	Detailed Design (to progress to Tender Stage in 2025)
11784	Tipperary University Hospital	Emergency Department upgrade.	Appraisal
11805A	RV Eye & Ear Hospital	Phase 2 & 3 - fire door project to provide for the repair and recertification together with the replacement of doorsets identified. Phase 2 (52 doors), Phase 3 (71 doors)	Appraisal
11810	University Hospital Waterford	Two storey extension to the existing UHW laboratory providing, specimen delivery and despatch, analytical office / workstations, locker room and on call accommodation	Detailed Design
11811	University Hospital Waterford	Proposed 2 floor vertical extension over existing OPD to provide an additional 36 consulting rooms, 4 treatment rooms, 4 measurement rooms and 2 virtual consultation rooms including plant room and alterations to existing levels.	Appraisal
11830	St. Luke's Hospital, Kilkenny	In accordance with the Acute Inpatient Bed Capacity Expansion Plan, proposed new ward block development including enabling (remove & replace existing accommodation).	Appraisal
11849	RV Eye & Ear Hosp	Repair/replace existing roof, including survey of existing. Works are also proposed to insulate the roof.	Design Feasibility
11910	NMH Holles Street	New build 2 storey Anatomical Labs to provide pathology and support services including: A perinatal Post Mortem Suite, Processing Lab, Microtomy Lab, Specialist Stains Lab, Referred Placenta Room, Consultant Offices, Bereavement, Chapel Of Rest & Family Services, Chaplaincy Services, Admin and support facilities.	Appraisal
11911	RV Eye & Ear Hospital	New main entrance lift shaft at the front entrance of the Hospital serving the main 4 floors of the building and the replacement of existing lift.	Appraisal
11986	Elm Park Green, Dublin	Purchase of a portfolio of buildings and associated fit out of one building to provide accommodation for a number of projects including: 1) Relocation of Dermatology from SVUH to enable the NMH project 2) Primary Care Centre 3) Weight Management and Gender Services Unit 4) Breast Check decant from SVUH to enable the NMH project 5) Out patients decant from SVUH 6) Relocation of Carew House from SVUH to enable the NMH project	Appraisal
11991	RV Eye & Ear Hospital	Replacement of existing gas boiler and CHP unit with a new heat pump and 2 no. modular backup gas boilers, and associated controls	Appraisal
15056	St. Columille's Hospital	Placeholder for project included in Acute Inpatient Bed Capacity Expansion Plan 2024-2031. Capital Submission to be progressed.	Appraisal
15057	St. Michael's Hospital, Dun Laoghaire	Placeholder for project included in Acute Inpatient Bed Capacity Expansion Plan 2024-2031. Capital Submission to be progressed.	Appraisal

Ambulance

11071	Gorey	The provision of an Ambulance Station in Gorey. Preferred site now identified, acquisition being progressed.	Design Feasibility (to progress to Detailed Design in 2025)
11636	New Ross	Purchase of building (former Fire Station) at New Ross, Co. Wexford for new Ambulance Base (includes site purchase WCC, title issues).	Design Feasibility (to progress to Detailed Design in 2025)
11838	Carlow Ambulance Base	New Ambulance Station. Regional Training Facility and business support hub by developing a greenfield site and renovation of Kelvin Grove House.	Design Feasibility
11955	Waterford Ambulance Base	New standalone Ambulance Base on a greenfield site.	Appraisal



Appendix 2

New Projects and Projects to Progress Through Design (as of 09/10/24)

Funding source is the Department of Health

Capital Reference No.	Facility	Brief Project Description	Status
11956	Wexford Ambulance Base	New standalone Ambulance Base on a greenfield site incorporating Emerging Threat Team (ETT) facility.	Appraisal
11957	Clonmel Ambulance Base	New standalone Ambulance Base on a greenfield site.	Appraisal
Enhanced Community Care			
13206	HUB 17 - Clonskeagh	New 2-storey building including an underground car park constructed on a green field site on an area of the HSE owned Clonskeagh Campus site in order to deliver Enhanced Community Care. The building will include basement car parking.	Design Feasibility
13207	HUB 18 - Cabinteely	Extension of Cabinteely Health Centre to create accommodation for CHN's.	Design Feasibility
13239	HUB 14 - Waterford	Refurbish part of St Otterans & St Patricks incorporating an extension to house diagnostics to provide a permanent location for ICPCD & ICPOP for Waterford covering two CHNs.	Detailed Design
13245	HUB 13 - Kilkenny	Refurbish the Community Care Health Centre known as James's Green to incorporate on an interim basis members of the Chronic Disease Hub in Carlow/Kilkenny.	Detailed Design (to complete construction in 2025)
13253	HUB 15 - Clonmel ECC Hub Interim	Refurbishment works to three existing HSE building on the grounds of St. Luke's Campus, Clonmel. Interim location for CDM hub and some primary care ICPOP and CHN services.	Detailed Design
13258	HUB 16 - Tincone, Wexford	Permanent extension (Ely Hospital) to existing PCC in Wexford for CHN team for Southeast Wexford, and outreach bookable rooms for the ICPOP and ICPCDM teams for Wexford (which will be based in Enniscorthy).	Design Feasibility
Mental Health			
11286	St. Canice's Hospital, Kilkenny	Accommodation for Community CAMHS accommodation, refurb	Detailed Design
11485	St. Vincent's University Hospital	Proposed 50 Bed adult Acute MH Unit. Project now proposed for St. Vincent's University Hospital, Elm Mount instead of St. Columcille's.	Design Feasibility
11730	University Hospital Waterford	Replacement of the existing Adult Acute Mental Health Unit 44-bed multi bed unit at UHW with a 50-bed single bed unit, incorporating Acute beds, Psychiatry of Old age, Hi Obs area, ECT.	Appraisal/ Design Feasibility
11853	Clonskeagh	Provision of an extension to an existing building to expand the existing Acute Day Hospital, co-locate a centralised clozapine clinic and the future development of a crisis assessment and response '7/7' service.	Design Feasibility
11877	St. Vincent's University Hospital	Reconfigure existing windows to reduce/ remove ligature points. This will involve electrical works for actuators etc.	Detailed Design
13902	St. Luke's Hospital, Kilkenny	New 50 bed Acute Mental Health Unit.	Appraisal
Primary Care			
11551	Baggot Street Hospital	Seed-funding capital investment in order to realise the maximum equity from the site via the provision of Design Development Works & Demolition Works including development of a PCC.	Detailed Design
11722	Greystones PCC	Proposal is to purchase a site for a new PCC from Wicklow County Council and proceed to tender stage.	Detailed Design (to progress to Tender Stage, subject to statutory approvals)
11770	Freshford Health Centre	Internal reconfiguration works of existing centre, including minor upgrade works and proposed new extension. Will include new clinical rooms for practice nurses and GPs; expansion of carpark and entrance realignment.	Design Feasibility
11799	Carrick On Suir	Amendments to existing GP Suites to accommodate incoming GP practice.	Detailed Design
11947	Sir Patrick Dun's Hospital	Public Health Labs - Repair and replace all damaged roof areas to include skylights, dome chimneys, pitch roof flashing and capping. Additionally refurb of rooms below roof that have sustained significant water damage.	Design Feasibility
11951	Clonskeagh	Creation of a campus Development Control Plan.	Detailed Design
11962	Ballyhale Health Centre	Relocation of existing Ballyhale Health Centre to create a new larger primary care centre.	Appraisal
Community Care (HIQA) Older Persons			
10741	Leopardstown Park Hospital	Replacement of Community Nursing Unit at Leopardstown Park Hospital - Older Persons Services (125 beds)	Detailed Design
11333	St Patrick's Hospital & Our Lady's, Cashel	Refurbishment and extension of Community Nursing Unit for St Patrick's Hospital & Our Lady's, Cashel (60 bed)	Detailed Design
11385	Gorey District Hospital	Refurbishment of Community Nursing Unit in Gorey District Hospital - Older Persons Services (19 beds)	Appraisal (to progress to Design Feasibility stage)
11692	St Joseph's & Dungarvan DH - All Phases (Dungarvan Community Hospital)	Replacement and refurbishment (Phased development) of Community Nursing Unit for St Joseph's & Dungarvan DH - Older Persons Services (95 beds)	Design Feasibility



Appendix 2

New Projects and Projects to Progress Through Design (as of 09/10/24)

Funding source is the Department of Health

Capital Reference No.	Facility	Brief Project Description	Status
HSE South West			
Acute Projects			
10532A	Cork University Hospital	Paediatric Department Phase 2; Inpatient bed provision including 82 replacement beds/cots (48 children beds, 24 infant beds, 6 HDU beds, 4 oncology/haematology beds - Mercy & CUH), 3 theatres, 1 procedure room and associated accommodation.	Detailed Design/ Planning
11267	University Hospital Kerry	Upgrade and extension to the Oncology Day Ward - roof top vertical extension over the existing Palliative Care ward. Scope includes 14No day treatment cubicles plus 2No day treatment isolation rooms & 7No outpatient consultation rooms. Aseptic compound unit is included.	Detailed Design (to progress to Tender Stage in 2025)
11449	University Hospital Kerry	Provision of new addressable emergency lighting system.	Detailed Design
11751	Mallow General Hospital	In accordance with the Acute Inpatient Bed Capacity Expansion Plan, fit out of existing 1st Floor shell & cores space to provide 24 bed inpatient ward. Fit out of existing Ground Floor shell & core space to provide Outpatient/Day Clinic ward to include 10 standard clinical rooms, and an additional 5 clinical rooms configured for the establishment and operation of an Obesity / Bariatric Clinic.	Detailed Design
11836	University Hospital Kerry	In accordance with the Acute Inpatient Bed Capacity Expansion Plan, new Ward Block comprising bed wards (single rooms) and ancillary accommodation.	Appraisal (to progress to Detailed Design in 2025)
11842	St. Stephen's Hospital	New Elective Hospital	Detailed Design
11876	St. Mary's Health Campus, Cork	Development of a Barnahus South service for children and young people following concern or disclosure of sexual assault/abuse and a replacement Sexual Assault Treatment Service. Project funded 50/50 with Tusla.	Appraisal
11916	St. Finbarr's Hospital	Reconfiguration of existing ground floor to create 5 no beds, wc's, staff facilities & associated accommodation. Vertical extension to existing single storey ward block to provide 19 beds.	Design Feasibility
11941	Cork University Hospital	Refurbishment of existing space to provide a new Hybrid theatre within the existing Theatre Complex on the Ground Floor.	Design Feasibility
11942	Cork University Hospital	In accordance with the Acute Inpatient Bed Capacity Expansion Plan, vertical extension over the existing Glandore Unit to provide dedicated 66 single beds (34 on 3rd floor (12 with isolation lobbies), 32 on 4th floor (15 with isolation lobbies)) for use by Med Onc, Rad Onc & Haem Onc. Associated plant space and ancillary accommodation. Alternative solutions currently being explored to deliver this project. Once preferred option is selected, this will progress to Detailed Design.	Appraisal
11945	Cork University Hospital	New multi-storey building to accommodate critical care, ward accommodation, Trauma, Acute, Critical Care and Ancillary Services including: ED - 21 adult spaces, 5 resus, 8 paed spaces, 4 obs, 4 specialist, 3 X-Ray, 3 CT, 1 MRI etc. Associated Decontamination. SDEC - 12 spaces ED Assessment - 48 beds In-patient Ward, Critical Care, Theatres and ancillary accommodation.	Design Feasibility
11994	Cork University Hospital	New multi-storey carpark on CUH Campus (in front of Cardiac Renal Centre) with capacity for at least 500 vehicles. Project will compensate for spaces to be consumed by ongoing capital projects on campus.	Appraisal
11995	South Infirmary Victoria University Hospital	Replacement of roof above main reception and surrounding departments including changing air conditioning.	Appraisal
11996	University Hospital Kerry	Replacement of n+1 Generator System and MV switchgear, T1, T2 & T3 transformers, LV switchboards along with new ESBN incomers & metering in a new Generator & MV compound to include ESBN switch room.	Appraisal
12016	Cork University Hospital	Works to fire Compartment lines, sub-compartment lines, service risers, protected shafts and hazard rooms	Appraisal
12017	Cork University Hospital	Upgrade of Fire Detection and Alarm Systems throughout CUH campus, and addressing emergency lighting issues in various areas of the campus	Appraisal
12070	University Hospital Kerry	Placeholder for project included in Acute Inpatient Bed Capacity Expansion Plan 2024-2031. Capital Submission to be progressed.	Appraisal
15061	Mercy University Hospital	Placeholder for project included in Acute Inpatient Bed Capacity Expansion Plan 2024-2031. Capital Submission to be progressed.	Appraisal
15061A	Mercy University Hospital	Placeholder for project included in Acute Inpatient Bed Capacity Expansion Plan 2024-2031. Capital Submission to be progressed.	Appraisal
11882	Cork University Hospital	HSE contribution towards refurbishment of UCC Dental School located on CUH campus.	Appraisal
Ambulance			
10447	Caherciveen	Provision of a new Ambulance Station Caherciveen Community Hospital (new proposal being considered - possible lease solution).	Design Feasibility
10510	Midleton	Provision of a replacement Ambulance Station, Midleton on HSE site.	Design Feasibility
11167	Cork City	Ambulance Base and HQ to serve Cork City & County in grounds of St Finbarr's Hosp	Detailed Design
11556	Mallow Ambulance Base	New Ambulance Base, Mount Alvernia.	Detailed Design



Appendix 2

New Projects and Projects to Progress Through Design (as of 09/10/24)

Funding source is the Department of Health

Capital Reference No.	Facility	Brief Project Description	Status
11954	NAS Training College, Youghal, Cork	Proposal to develop a tertiary education facility campus to conduct 3rd-level accredited training. Lecture rooms, offices, etc. This facility will be in addition to training facilities in Dublin, Tullamore & Ballinasloe.	Appraisal (to progress towards Design Feasibility stage)

Enhanced Community Care

13204	HUB 10 - St. Mary's Health Campus, Cork	New build extension, upgrade and refurbishment of existing accommodation to provide clinical rooms, offices, gym for cardiac and pulmonary rehabilitation, education room, as well as diagnostic services etc.	Design Feasibility
-------	---	--	--------------------

Mental Health

11266	Mercy University Hospital	Refurbish and upgrade the existing St Michael's Ward to bring accommodation up to standard as an interim solution. Long term proposal is a new unit (no of beds to be determined), site location to be determined.	Design Feasibility
11749	St. Finbarr's Hospital	20 bed Mental Health unit with single, en-suite rooms at St. Catherine's Unit. Older persons, continuing care and rehabilitation facilities. Will incl reception, administration areas and shared facilities. Will also provide a range of therapy services.	Design Feasibility
11750	St. Stephen's Hospital	New 50-bed Mental Health unit with single, ensuite rooms. Older persons, continuing care and rehabilitation facilities. Will incl reception, administration areas and shared facilities. Will also provide a range of therapy services.	Detailed Design
11767	Owenacurra, Midleton	Purpose-built 10-bed Community Rehabilitation Residence (CRR) with single room en-suite accommodation as separate "households" to facilitate resident-directed care.	Detailed Design
TBC	Mercy University Hospital	Replacement Adult Mental Health Unit (AMHU) for Mercy University Hospital. Capital Submission to be progressed.	Appraisal

Community Services

11963	Blarney CNU	Refurbishment of existing vacant space in Blarney CNU for use as therapy space to utilise 20 No. existing at Blarney CNU for a neurorehabilitation unit.	Design Feasibility
-------	-------------	--	--------------------

Community Care (HIQA) Older Persons

11688	St Raphael's, Youghal	HIQA Compliance - New 60 bed RCC at St. Raphael's, Youghal to replace the existing Youghal Community Hospital (38 beds) and Cois Abhann Welfare Home, Youghal (22 beds).	Detailed Design
-------	-----------------------	---	-----------------

HSE Midwest

Acute Projects

10635	University Hospital Limerick	Maternity Relocation to UHL Campus.	Appraisal
11113B	University Hospital Limerick	2nd Ward Block (4x24 beds) located over lower floors constructed under Cap Ref # 11113A.	Detailed Design
11113C	University Hospital Limerick	Acute Medical Floor (incl AMAU, GEM unit and CDU relocation) Fit out of basement area.	Appraisal
11451	University Hospital Limerick	Production Kitchen/Catering Upgrade (Equipping part purchase in 2020). Complex project, enabling works	Detailed Design
11484	University Hospital Limerick	Reconfiguration and extension to current Radiology Department and provision of a 2nd MRI (additional).	Detailed Design
11603	Ennis General Hospital	In accordance with the Acute Inpatient Bed Capacity Expansion Plan, new Theatre block (2 No. theatre and associated accommodation, 4 No. recovery bays) and CSSD, and associated refurbishment, move VIE.	Detailed Design
11766	University Hospital Limerick	Proposed 3 storey building linked to the existing cancer services outpatient day ward to provide administration accommodation including meeting room, offices for 34 people, staff canteen, & associated accommodation. The building will accommodate clinical support staff who will move from the OPD building thus allowing increased capacity. Costs include for fit out of vacated space.	Detailed Design
11989	Nenagh Hospital	Phase 1: Upgrade of the standby generator system to include: Generator(s), Controls & alarms, LV Offloader panel, Submains cabling, Associated support services. Phase 1 electrical works is covered under minor capital funding, phase 1 builderswork's are included in this project. Phase 2: Upgrade of the Main LV Infrastructure	Detailed Design
13912	University Hospital Limerick	In accordance with the Acute Inpatient Bed Capacity Expansion Plan, vertical expansion of existing single story ward block.	Appraisal (to progress to Detailed Design in 2025)
15065	St. John's Hospital, Limerick	Placeholder for project included in Acute Inpatient Bed Capacity Expansion Plan 2024-2031. Capital Submission to be progressed.	Appraisal
15067	Nenagh Hospital	Placeholder for project included in Acute Inpatient Bed Capacity Expansion Plan 2024-2031. Capital Submission to be progressed.	Appraisal



Appendix 2

New Projects and Projects to Progress Through Design (as of 09/10/24)

Funding source is the Department of Health

Capital Reference No.	Facility	Brief Project Description	Status
Radiation Oncology			
10008J	University Hospital Limerick	Linacs Refreshment/Replacement Programme (including CT).	Appraisal
Enhanced Community Care			
13223	HUB 07 - St. Joseph's Hospital, Mulgrave Street, Limerick Interim Solution	Works associated with the installation of a rented modular unit on the grounds of St Joseph's Hospital as an interim solution for the ICPCD team until the permanent Primary Care Centre at St Joseph's Hospital is complete.	Detailed Design
Mental Health			
10127	St. Joseph's Hospital, Limerick	Community C&A Mental Health Facility in grounds of St Joseph's (to accommodate services currently in inappropriate (mostly rented) accommodation).	Detailed Design
12046	St. Joseph's Hospital, Limerick	Refurbish the Hammerhead block, a protected heritage building within the St. Joseph's Hospital campus in Limerick. This option involves the comprehensive renovation and modernization of the Hammerhead block to house St. Anne's Community Mental Health Centre and the Rehab and Recovery.	Design Feasibility
12074	Dolmen House	Adult ADHD and Crisis Resolution Services.	Appraisal
Primary Care			
11747	St. Joseph's Hospital, Limerick	Proposed new Primary Care Building, green field site. GP suite, Primary Care, CDM, ICPOP, Orthodontics, Paediatric Network Team.	Detailed Design
11950	Scariff Health Centre	Proposed extension to allow for physiotherapy suite, podiatry room, leg ulcer room, child health room, wounds room, speech and language therapy room, multipurpose group room and 2 bookable rooms. Will also allow for disability toilet, staff toilet and janitorial unit.	Appraisal
11974	St. Joseph's Hospital, Limerick	Purchase and refurbishment of building to allow decant of "Aids & Appliances" services from St. Joseph's Hospital, Limerick to allow transfer of land to the Land Development Agency. Acquisition completed with some works to follow.	Appraisal
Community Care (HIQA) Older Persons			
11386	St Joseph's CNU, Ennis	Replacement of Community Nursing Unit at St Joseph's CNU, Ennis - Older Persons Services (100 beds) includes long and short stay beds	Detailed Design
11848	Mount Carmel, Roscrea	Acquisition & modification of Mount Carmel Nursing Home. Acquisition in progress with some capital works to follow.	Appraisal
12056	St. Senan's Nursing Home, Kilrush	Fire upgrades	Detailed Design
HSE West & North West			
Acute Projects			
10027A	Letterkenny University Hospital	Fire Safety Works to Medical Ward Block (scope of works under review, may not be required - possible fire engineering solution)	Detailed Design
10842A	Sligo University Hospital	Redevelopment - Phase 1 . Ward Block, HDU/ICU, Radiology, Paediatric, Maternity/Obs, Theatre Department, ED/AMAU/CDU.	Detailed Design
11017C	Letterkenny University Hospital	Renal Dialysis expansion. Increasing Capacity from 14 to 21.	Detailed Design
11099	Roscommon University Hospital	Provision of a Rehabilitation Unit - supported by the National Rehabilitation Hospital (Phase 1 - 10 Beds)	Detailed Design
11143	University Hospital Galway	New Emergency Department with Ward Block.	Detailed Design
11368	Mayo University Hospital	Update Development Control Plan, hospital campus and adjacent lands in conjunction with Mayo Co Co local area plan	Detailed Design
11428	Mayo University Hospital	New ground floor extension to ED & reconfiguration of existing ED (7 additional ED assessment & treatment spaces). New first floor MAU at first floor (10 spaces). Reconfiguration of C Ward to facilitate the new build tie-in and provide additional isolation rooms.	Detailed Design
11447	Sligo University Hospital	Upgrade of existing Macular Treatment room and creation of a second room. Extra space to perform increased injection therapies and ophthalmic surgery.	Design Feasibility
11476	University Hospital Galway	Provision of a new helipad.	Detailed Design
11512	University Hospital Galway	Research Hybrid Cardiac Cath Lab - co-funded with SFI & NUI Galway. Phase 1 - procurement & installation of a CT on GF of CRF building (complete). Phase 2 - Development of Hybrid Cardiac Cath Lab adjacent to existing two Cath Labs. Phase 1 (CT) - Const Sept 2021.	Detailed Design
11543	Letterkenny University Hospital	Electrical Infrastructure Upgrade, 1980's building. Phases 2 & 3.	Detailed Design
11544	Letterkenny University Hospital	Boiler replacement (Enabling works 2022, new gas tank)	Detailed Design
11601	Letterkenny University Hospital	New Aseptic Compounding unit. Extension and reconfiguration of the existing	Detailed Design



Appendix 2

New Projects and Projects to Progress Through Design (as of 09/10/24)

Funding source is the Department of Health

Capital Reference No.	Facility	Brief Project Description	Status
11627	University Hospital Galway	New Medical Laboratory building to house all existing laboratory services in one as a replacement to existing prefab accommodation.	Design Feasibility
11720	University Hospital Galway	Replacement of 3 No. main public lifts (main ward block), 1 No. goods lift (main ward block).	Detailed Design
11727	University Hospital Galway	In accordance with the Acute Inpatient Bed Capacity Expansion Plan, new ward block including enabling works such as road diversions, demolition, service diversions etc.	Appraisal (to progress to Detailed Design in 2025)
11793	Galway City East	Purchase and fit out of building in Galway City (BMR House, Parkmore). Decant Acute Services.	Design Feasibility
11808	Merlin Park University Hospital	Phase 2 of new OPD to provide 77 additional consulting rooms, associated treatment rooms, and other associated facilities.	Appraisal
11840	University Hospital Galway	New cancer centre incorporating inpatient beds, theatres, ICU/CCU beds, ambulatory care facilities, diagnostics and associated admin supports with direct connection links to the existing main hospital. Project to be progressed in the context of the revised Master Plan for the campus currently being developed.	Appraisal (to progress to Design Feasibility in the context of campus DCP)
11843	Merlin Park University Hospital	New Elective Hospital	Detailed Design
11851	Letterkenny University Hospital	Relocate existing AMAU and admin accommodation to a new extension providing 6 no. single rooms. Reconfigure vacated space to provide additional enclosed single ED cubicles (6 No.) & to create separate enclosed ED Paediatric Treatment single cubicles (4 No.) and a stand-alone waiting room.	Appraisal
11874	Portiuncula University Hospital	ED expansion to increase no. of bays by 9 (currently 14 treatment and 2 resus). This will provide capacity to deal with children in a segregated area of ED. Support facilities such as wc's shall also be provided.	Design Feasibility
11914	Portiuncula University Hospital	Replacement of Central Sterile Services Decontamination (CSSD) Unit for Reusable Invasive Medical Devices. This will also provide a service for Roscommon UH.	Design Feasibility
15069	Letterkenny University Hospital	Placeholder for project included in Acute Inpatient Bed Capacity Expansion Plan 2024-2031. Capital Submission to be progressed.	Appraisal
15071	Mayo University Hospital	Placeholder for 96-bed ward block project included in Acute Bed Capacity Expansion Plan 2024-2031. Capital Submission to be progressed.	Appraisal
15073	Portiuncula University Hospital	Placeholder for project included in Acute Inpatient Bed Capacity Expansion Plan 2024-2031. Capital Submission to be progressed.	Appraisal
Ambulance			
10275	Sligo	Construction of a new ambulance station with regional training and education facility over two floor levels on a greenfield site. Site is standalone with no obstructions to major road networks.	Appraisal
11652	Recess HC, Connemara	Refurbishment of existing 1960s Health Centre and ambulance parking for use as NAS dynamic deployment base in Connemara.	Detailed Design
11925	Buncrana	Renovation of an existing old HSE health centre at McGinn Avenue, Buncrana and conversion to an ambulance base.	Appraisal
11953	Ballinasloe Ambulance Base	New standalone Ambulance Base on a greenfield site.	Appraisal
12011	Castlebar	New ambulance station with regional training and education facility over two floor levels on a greenfield site. Station to include 16 vehicle canopy, wash bay and to accommodate 134 daily staff.	Appraisal
Enhanced Community Care			
13221	HUB 06 - Castlebar	Equipping of new build extension to Castlebar PCC (extension of lease terms) to accommodate ECC Hub.	Design Feasibility
13230	HUB 01 - St. Conals, Letterkenny	Extension to existing Chronic Disease Management Hub to provide support accommodation.	Detailed Design
13231	HUB 03 - St. Johns Campus, Sligo	Refurbishment of an existing single storey office block and an extension. The overall project will provide office accommodation, clinic rooms, receptions etc.	Detailed Design
13255	HUB 01 - St. Conals, Letterkenny	New building to house ECC Hub to include ICPOP, ICPCD, Diagnostics etc. A road realignment is required as enabling works.	Appraisal
13257	HUB 03 - Clarion Road, Sligo	New two storey building to house ECC Hub. The building will provide office and clinical accommodation to the ICPOP, ICPCD, Diagnostics and Community Health Network Team.	Appraisal
Mental Health			
11486	Castlebar	Refurbishment and small extension of two High Support Community Residences, An Coilin & Teach Aisling to appropriately accommodate 9 residents in 2 residential units.	Detailed Design
TBC	Roscommon	Replacement Adult Mental Health Unit (AMHU) for Roscommon.	Appraisal
Community Services			
11768	Lifford	Proposed 25 bed Community Nursing Unit at Lifford to replace the existing.	Appraisal



Appendix 2

New Projects and Projects to Progress Through Design (as of 09/10/24)

Funding source is the Department of Health

Capital Reference No.	Facility	Brief Project Description	Status
12000	Ballina District Hospital	New 75 bed Community Nursing Unit at on the grounds of Ballina District Hospital, including demolition of part the existing District Hospital and refurb of the remainder as day care. Unit will replace St Augustine's CNU and provide long & short stay.	Appraisal (to progress towards Detailed Design stage)
TBC	Belmullet CNU	Proposed replacement Community Nursing Unit for Belmullet	Appraisal (to progress towards Detailed Design stage)

Primary Care

10162C	Nazareth House, Sligo	Nazareth House - Phase 3 - Primary Care Centre including External Works.	Detailed Design
11204	Inishbofin	The provision of a new Primary Care Centre to replace the existing inadequate facility.	Design Feasibility
11254	Tubbercurry	Primary Care Centre to be delivered as HSE build.	Detailed Design
11604	Donegal Hospice	New extension to Donegal Hospice to provide 4 No. bedrooms with family/visitor accommodation. 4 No. existing bedrooms are to be converted for administration/clinical use. Overall bed capacity will remain as existing. Funded by Donegal Hospice.	Detailed Design
11769	Lifford	Proposed new Primary Care Centre at Lifford.	Appraisal

Community Care (HIQA) Older Persons

11424	Ramelton CNU	HIQA Compliance - Refurbishment - 30 beds	Appraisal
11425	St Joseph's, Stranorlar	HIQA Compliance - Refurbishment - 67 beds	Appraisal
11662	Buncrana CNU	Refurbishment (To follow Carndonagh) - 30 beds	Detailed Design
11671	Arus Ronan, Aran Islands	HIQA Compliance - Refurbishment - 12 beds	Review
11672	St Annes CNU, Clifden	HIQA Compliance and Phase 2 - New 40 bed CNU & refurb existing for support services	Detailed Design

HSE Centre

Acute Projects

11022A	Design & Dignity, National Mortuary Programme	National Mortuary Capital Programme to review the existing facilities and upgrade/refurbish sub-standard public hospital mortuaries to ensure they are in line with best practice standards	Appraisal
11845	National Programme	In accordance with the Acute Inpatient Bed Capacity Expansion Plan, management and programme structure.	Appraisal
11847	National Programme	New Elective Hospital Programme	Design Feasibility

Radiation Oncology

10008I	Radiation Oncology	Linacs Refreshment/Replacement Programme St Luke's, Rathgar, St James & Beaumont (may include equipping Phase 2 Beaumont). Design Build Equip and Maintain.	Detailed Design
--------	--------------------	---	-----------------

Local Injury Units

Various	Local Injury Units	National Programme - proposal for locations under consideration by Senior Leadership Team	Programme
---------	--------------------	---	-----------

Primary Care

13097	National Virus Reference Laboratory Expansion	New building to consolidate NVRL testing platforms and human resources under one roof. Current NVRL is located a UCD with a COVID satellite at Backweston Campus.	Appraisal
-------	---	---	-----------



Appendix 3

Community Care (Disability) Projects Funded in 2025 (as of 09/10/24)

Funding source is the Department of Children, Equality, Disability, Integration & Youth

Capital Reference No.	Facility	Brief Project Description	Status
-----------------------	----------	---------------------------	--------

HSE Dublin & North East

Projects at Tender Stage, beyond Tender Stage and Contractually Committed in 2025

11420	Dublin City - Adelphi House	Refurbishment of Adelphi House, N.Circular Rd to provide accommodation for Respite Beds and a separate Day Services Hub for adults with Autism.	Construction
11775	St. Michael's House, Raheny	Proposed refurbishment and extension of existing building at St. Michael's House, Raheny Adult Day Centre. Decant building not include in costs, it is to be provided by St. Michael's House.	Construction
11792	Ballyhaise	Purchase and refurbishment of a house in Antiduff, Ballyhaise, Co. Cavan to replace an existing house, Manderly Lodge. Manderly Lodge to be sold on completion of the works.	Construction

New Projects and Projects to Progress Through Design

11419	Gracepark Road, Drumcondra, Dublin City - Childvision	Development of a National Campus of Excellence for the Visually Impaired (Partial Design Team - planning granted).	Detailed Design
11520	CRC, Clontarf	Redevelopment of existing CRC Facilities, Roof & Fire Safety Works (Review & feasibility of overall site requirements).	Detailed Design
11570	National allocation for Fire Safety (Disability HSE Dublin & North East)	National allocation for Fire Safety in community residential dwellings (Disability).	Programme
11606	57 Rathbeale Road, Swords, Co Dublin	Intensive Support Disability Day Service unit - to provide day services to children entering adult services through delivering high quality, person centred day services which promote the active citizenship of all service users.	Detailed Design
11890	Minor Capital (HSE Dublin & North East)	Infrastructural Risk Projects (e.g. Structural, Mechanical and Electrical engineering deficits risk).	Programme
12002	Drumlin House, Cootehill	Stand-alone Day Service Facility to support adults with an Intellectual Disability with new build and refurbishment of an existing building at Drumlin House Cootehill.	Detailed Design
12075	Ballybay Rd, Monaghan	Respite House Purchase.	Appraisal
14153	Decongregation Residence at Donabate, Dublin	Construction of a specialist residential unit in Donabate, Dublin as part of the Decongregation Strategy	Detailed Design
14156	Decongregation Residence at Rath, Co. Louth	Construction of a specialist residential unit in Rath, Co. Louth as part of the Decongregation Strategy	Design Feasibility

HSE Dublin & Midlands

Projects at Tender Stage, beyond Tender Stage and Contractually Committed in 2025

14145	Decongregation Residence at Clane, Co. Kildare	The purchase & renovation of residential dwelling in Clane, Co. Kildare as part of the Decongregation Strategy	Complete
-------	--	--	----------

New Projects and Projects to Progress Through Design

11421	Residential Property at Portlaoise, Co. Laois	New replacement (purchase) Community Residence	Appraisal
11570	National allocation for Fire Safety (Disability HSE Dublin & Midlands)	National allocation for Fire Safety in community residential dwellings (Disability).	Programme
11742	CRC, Clondalkin	Construction of a new purpose-built facility to replace existing accommodation and provide clinical disability services to children and adults, including Assistive Technology, Specialist Seating and other specialist services.	Appraisal
11890	Minor Capital (HSE Dublin & Midlands)	Infrastructural Risk Projects (e.g. Structural, Mechanical and Electrical engineering deficits risk).	Programme
Various	Various Locations (Dublin South/ Kildare/ West Wicklow)	Physical Day Services - various locations.	Design Feasibility/ Appraisal

HSE Dublin & South East

Projects at Tender Stage, beyond Tender Stage and Contractually Committed in 2025

11787	Bakers Corner, Pottery Road, Dun Laoghaire	Refurbishment and upgrade of a unit (HSE property) at Bakers Corner to create a Disabilities Respite Unit.	Complete
11982	Claddagh House, Oulart, Wexford	Purchase Claddagh House in Kyle, Oulart, Co. Wexford for the provision of a South East Regional Children's Complex Care Day Respite House, under Disability Service. Services to be provided by Section 39 organisation.	Tender
14136	Decongregation Residence at Drinagh, Co. Wexford	The purchase and renovation of residential dwelling at Drinagh, Co. Wexford for WRIDS as part of the Decongregation Strategy	Construction

New Projects and Projects to Progress Through Design



Appendix 3

Community Care (Disability) Projects Funded in 2025 (as of 09/10/24)

Funding source is the Department of Children, Equality, Disability, Integration & Youth

Capital Reference No.	Facility	Brief Project Description	Status
11342	Kelvin Grove, Carlow	New build for Children's Therapy Services (Holy Angels) for children 0-18 with complex needs in HSE owned site in Carlow, including preschool facility & therapy pool.	Design Feasibility
11570	National allocation for Fire Safety (Disability HSE Dublin & South East)	National allocation for Fire Safety in community residential dwellings (Disability).	Programme
11890	Minor Capital (HSE Dublin & South East)	Infrastructural Risk Projects (e.g. Structural, Mechanical and Electrical engineering deficits risk).	Programme
11455	St. Otterans	New build St. Otteran's Childrens Therapy facility to facilitate therapy services for children and young with complex needs (incl Sacred Heart Centre). Site aka St. John's Hill. Works part funded by Touching Hearts charity.	Detailed Design
14159	Decongregation Residence at Killinick, Co. Wexford	The purchase and renovation of residential dwelling at Killinick, Co. Wexford for WRIDS as part of the Decongregation Strategy	Detailed Design

HSE South West

New Projects and Projects to Progress Through Design

11570	National allocation for Fire Safety (Disability HSE South West)	National allocation for Fire Safety in community residential dwellings (Disability).	Programme
11890	Minor Capital (HSE South West)	Infrastructural Risk Projects (e.g. Structural, Mechanical and Electrical engineering deficits risk).	Programme
12007	Various Locations (TBC)	Proposal to build 5 No. 4 bedroom houses for high risk cases.	Appraisal
14139	Decongregation Residence at Killorglin, Co. Kerry	The purchase & renovation of residential dwelling at Killorglin, Co. Kerry as part of the Decongregation Strategy	Detailed Design

HSE Midwest

Projects at Tender Stage, beyond Tender Stage and Contractually Committed in 2025

11555	Brothers of Charity, Bawnmore, Limerick	Fire Alarm and Emergency Lighting & compartmentation works in conjunction with decongregation programme, subject to lien. Phased. Works completed to 1 house by BoC.	Construction
14133	Decongregation Residence at Pallasgreen, Co. Limerick	The construction of 3 dwellings at Pallasgreen, Co. Limerick Construction as part of the Decongregation Strategy	Construction
14160	Decongregation Residence at Birr, Co. Offaly	The purchase & renovation of residential dwelling at Birr, Co. Offaly as part of the Decongregation Strategy	Construction

New Projects and Projects to Progress Through Design

11570	National allocation for Fire Safety (Disability HSE Midwest)	National allocation for Fire Safety in community residential dwellings (Disability).	Programme
11890	Minor Capital (HSE Midwest)	Infrastructural Risk Projects (e.g. Structural, Mechanical and Electrical engineering deficits risk).	Programme
11977	Block B, Grove Island, Limerick	Purchase and refurbishment of an existing building, currently in use as a Disability Adult Day Centre. The building is currently rented by the Brothers of Charity and in use as a Disability Adult Day Centre.	Design Feasibility
14154	Decongregation Residence at Lisnagry, Limerick	High Support Accommodation via 2 No. interlinked apartments at Lisnagry, Co. Limerick as part of the Decongregation Strategy	Design Feasibility

HSE West & North West

Projects at Tender Stage, beyond Tender Stage and Contractually Committed in 2025

11980	Respite House at Ballina, Co. Mayo	Purchase and refurb of property for Disability Respite services - residential, Ballina Co. Mayo.	Tender
14152	Decongregation Residence at Ursuline Housing Development, Sligo	Purchase of two new houses in the Ursuline Housing Development, Sligo, as part of the Decongregation Strategy.	Construction
14124	Decongregation Residence at Swinford, Co. Mayo	New dwelling in Swinford, Co. Mayo on site owned by Local Authority as part of the Decongregation Strategy	Tender
14125	Decongregation Residence at Castlebar, Co. Mayo	Refurb of purchased house in Castlebar, Co. Mayo as part of the Decongregation Strategy	Complete
14134	Decongregation Residence at Castlebar, Co. Mayo	New dwelling on HSE owned site in Castlebar, Co. Mayo as part of the Decongregation Strategy	Construction



Appendix 3

Community Care (Disability) Projects Funded in 2025 (as of 09/10/24)

Funding source is the Department of Children, Equality, Disability, Integration & Youth

Capital Reference No.	Facility	Brief Project Description	Status
New Projects and Projects to Progress Through Design			
11439	Cleary Centre, Donegal Town	New ID Adult Day Services facility.	Detailed Design
11890	Minor Capital (HSE West & North West)	Infrastructural Risk Projects (e.g. Structural, Mechanical and Electrical engineering deficits risk).	Programme
11814	Day Services at Ballymote, Co. Sligo	Construction of a new building on a HSE owned site at Ballymote, Sligo for use as a Day care services for Sligo/ Leitrim. This building is to relocate existing services being provided by IONA Transition Programme at at leased building at Cregg House.	Detailed Design
11837	Respite House at Carrick-On-Shannon, Co. Leitrim	New build residence for adult disability respite. Proposed site is on HSE-owned lands adjacent St Patricks Community Hospital, Carrick on Shannon.	Detailed Design
11890	Minor Capital (HSE West & North West)	Infrastructural Risk Projects (e.g. Structural, Mechanical and Electrical engineering deficits risk).	Programme
11985	Residential Property at Ballydoogan, Co. Sligo	Purchase and refurbishment of a house in Ballydoogan, Co. Sligo to replace an existing 2-storey house	Design Feasibility
12053	Residential Property at, Collooney, Co. Sligo	Purchase and fitout of residential property (currently leased by HSE) for accommodating residential service users.	Appraisal
14162	Decongregation Residence at Killygordon, Co. Donegal	Purchase and refurbishment of residential dwelling at Killygordon, Co. Donegal as part of the Decongregation Strategy	Detailed Design
14163	Decongregation Residence at Carndonagh, Co. Donegal	Purchase of a site, demolition of the existing building and the construction of a new house in Carndonagh, Co. Donegal as part of the Decongregation Strategy	Appraisal
14164	Decongregation Residence at Carndonagh, Co. Donegal	Purchase and refurbishment of residential dwelling at Carndonagh, Co. Donegal as part of the Decongregation Strategy	Appraisal
14166	Decongregation Residence at Stranorlar, Co. Donegal	Refurb and extend HSE-owned property in Stranorlar, Co. Donegal as part of the Decongregation Strategy (1)	Appraisal
14167	Decongregation Residence at Stranorlar, Co. Donegal	Refurb and extend HSE-owned property in Stranorlar, Co. Donegal as part of the Decongregation Strategy (2)	Appraisal
14168	Decongregation Residence at Carndonagh, Co. Donegal	Build on HSE-owned site in Carndonagh, Co. Donegal as part of the Decongregation Strategy	Appraisal
14135	Decongregation Residence at Áras Attracta, Swinford, Co. Mayo	Complete refurbishment of existing bungalow on the grounds of Áras Attracta, Swinford, Co. Mayo as part of the Decongregation Strategy	Appraisal
14165	Decongregation Residence at Oranmore, Co. Galway	The purchase & renovation of residential dwelling at Oranmore, Co. Galway as part of the Decongregation Strategy	Detailed Design

HSE Centre

Projects at Tender Stage, beyond Tender Stage and Contractually Committed in 2025			
11223	Various Locations TBC	Capital Allocation to allow for the upgrade of residential facilities for people with disabilities to meet HIQA standards i.e. Decongregation Programme	Programme
11570	National allocation for Fire Safety (Disability)	National allocation for Fire Safety in community residential dwellings (Disability).	Programme
11890	Minor Capital (Disability)	Infrastructural Risk Projects (e.g. Structural, Mechanical and Electrical engineering deficits risk).	Programme

New Projects and Projects to Progress Through Design			
Various	Various Locations TBC	Intensive Support Disability Day Services - various locations.	Appraisal
Various	Various Locations TBC	Children's Disability Network Teams - various locations.	Appraisal
Various	Various Locations TBC	Children's Respite - various locations.	Appraisal
Various	Capital Project Initiation Development Fund	Seed funding for Feasibility Studies/SAR/PBC.	Appraisal



Appendix 4

Climate Action Plan - Pilot "Pathfinder" Projects (as of 09/10/24)

Capital Reference No.	Facility	Brief Project Description	Status
HSE Dublin & North East			
"Pathfinder" Projects			
11927	Our Lady of Lourdes Hospital, Drogheda	Deep Energy and Carbon Retrofit Pilot Pathfinder Project in partnership with SEAI.	Detailed Design
11928	Lusk Community Nursing Unit	Deep Energy and Carbon Retrofit Pilot Pathfinder Project in partnership with SEAI.	Appraisal
HSE Dublin & Midlands			
"Pathfinder" Projects			
11822	Regional Hospital Mullingar	Deep Energy and Carbon Retrofit Pilot Pathfinder Project in partnership with SEAI.	Construction
11929	Baltinglass Community Hospital	Deep Energy and Carbon Retrofit Pilot Pathfinder Project in partnership with SEAI.	Appraisal
HSE Dublin & South East			
"Pathfinder" Projects			
11926	Wexford General Hospital	Deep Energy and Carbon Retrofit Pilot Pathfinder Project in partnership with SEAI.	Detailed Design
HSE South West			
"Pathfinder" Projects			
12055	Clonakilty CNU	Deep Energy and Carbon Retrofit Pilot Pathfinder Project in partnership with SEAI.	Design Feasibility
HSE West & North West			
"Pathfinder" Projects			
12001	Plunkett Home, Boyle	Deep Energy and Carbon Retrofit Pilot Pathfinder Project in partnership with SEAI.	Appraisal