



Monitoring System for the Interim Standards



The HSE in partnership with National Disability Authority and Umbrella bodies is developing an outcomes-focused monitoring system to support the implementation of the Interim Standards for New Directions in Adult Disability Day Services.

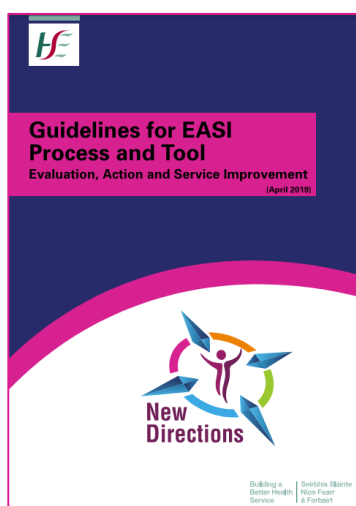
Interim Standards for New Directions

Day Services are provided in line with the [New Directions](#) policy. This policy is underpinned by the values of Person-Centredness, Community Inclusion, Active Citizenship and Quality. [Interim Standards](#) for New Directions were developed and published in 2015.



Please see New Directions [website](#) and [explainer video](#) for more information.

Phase 1: Evaluation, Action and Service Improvement (EASI)



Adult day services have been completing EASI self-evaluation and Continuous Quality Improvement for the last number of years. We are now moving towards a monitoring system. The EASI process will be a key element for the new monitoring system.

Phase 2: Developing the monitoring system

Work Completed so far

2022

- Consultations to inform the proposal for the monitoring system

2023

- Commissioning of Steering Group Q1
- Day Services - Voices Together Subgroup
- Outcomes-focused monitoring subgroup

2024

- Consultation with all stakeholders Q2/Q3
- Ongoing Communication
- Development of a proposed monitoring system to be trialled in Q4

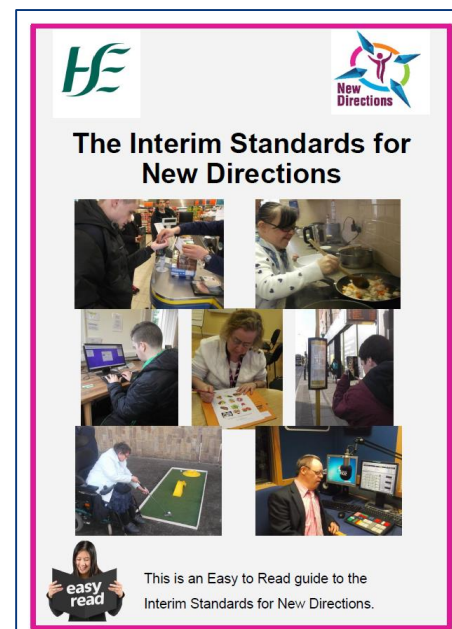
- An outcomes-focused monitoring system is a way to understand the outcomes and experiences of adults attending day services and how each day service is working towards the values of person-centredness, community inclusion, active citizenship and quality.
- This development is responding to the wishes of individuals who attend day services, their families, and day service staff.

Read more about the development of the monitoring system: [Outcomes-focused Monitoring System for the New Directions Interim Standards](#) paper.

Next Steps:

Inform Adults who attend Day Services (Q3 2024)

- We encourage each service provider to revisit existing easy to read information on New Directions and the Interim Standards.
- Support the adults attending day services to access the [Video on New Directions](#) and easy to read documentation.



Trial and Evaluate (Q4 2024)



- In Q4 2024 we will trial and evaluate the monitoring system.
- The trial will be run over 6-9 months, across 3 phases with approximately 20 locations in each phase.
- The feedback on the tools and approach from each phase will inform the next phase.
- The NDA will evaluate the trial on completion and write a final report with recommendations for implementation.

Summary Timeline

June 2022 – Aug 2024

Develop

The overall approach with all stakeholders

Consultation to inform overall approach & trial with:

- People receiving day services
- Families
- Service providers
- Representative bodies
- Monitoring Steering/Working groups
- CHO's / RHA's / National

➤ **Newsletter updates and easy read information**

Oct 2024 – May 2025

Trial & Evaluate

With 60-day service locations

- Trial monitoring visit to test tools and approach
- Evaluation by NDA
- Report with recommendations for implementation

➤ **Recommendations for implementation**

From September 2025

Implement

By HSE and all-Day Service Providers in each RHA

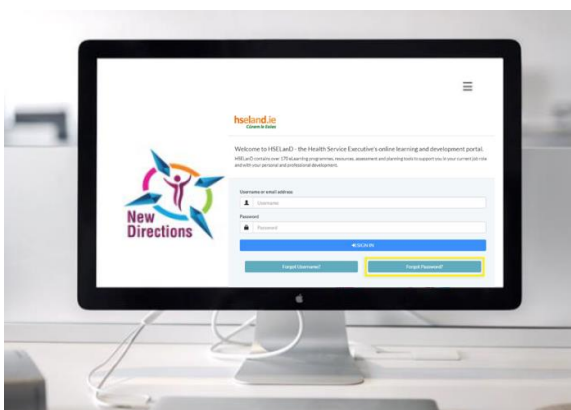
- Focus on self evaluation and continuous quality improvement
- Recognition of good practice & outcomes
- Address gaps for improvement

➤ **Support for services to implement**



Ongoing consultation

For More Information



- Visit HSeLand Day Service Discovery Zone hub www.hseland.ie
- Visit New Directions www.hse.ie/newdirections
- NewDirections@hse.ie