



Patient Flow Academy Excellence Awards

Submission Deadline: 30th September 2024



Patient Flow Academy Excellence Awards



Has your team successfully implemented a patient flow improvement project in the past 5 years?

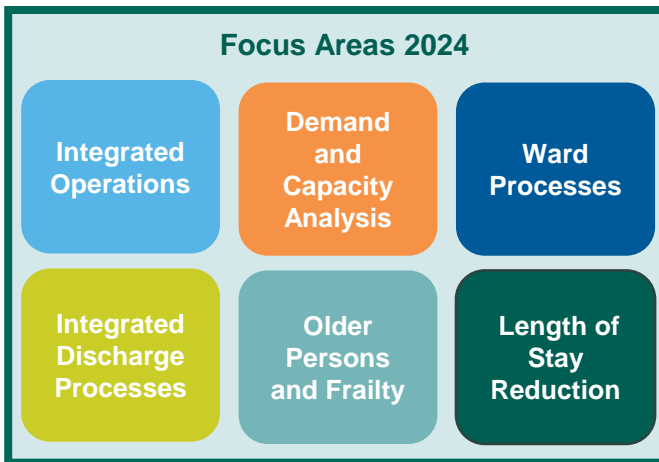
We want to recognise you with an award of up to €5,000 to reinvest in your idea.

What are the Patient Flow Excellence Awards?

Patient flow is the ability of healthcare systems to manage patients effectively and with minimal delays as they move through stages of care.

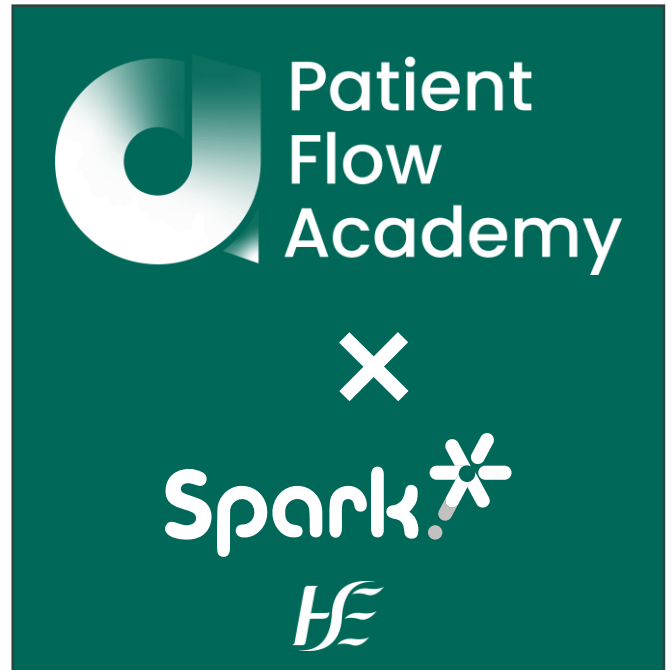
We are seeking to reward innovative projects completed in the last 5 years which have improved patient flow in your service.

We are encouraging all innovations with an impact on patient flow. We have a particular interest in projects related to the following priority areas:



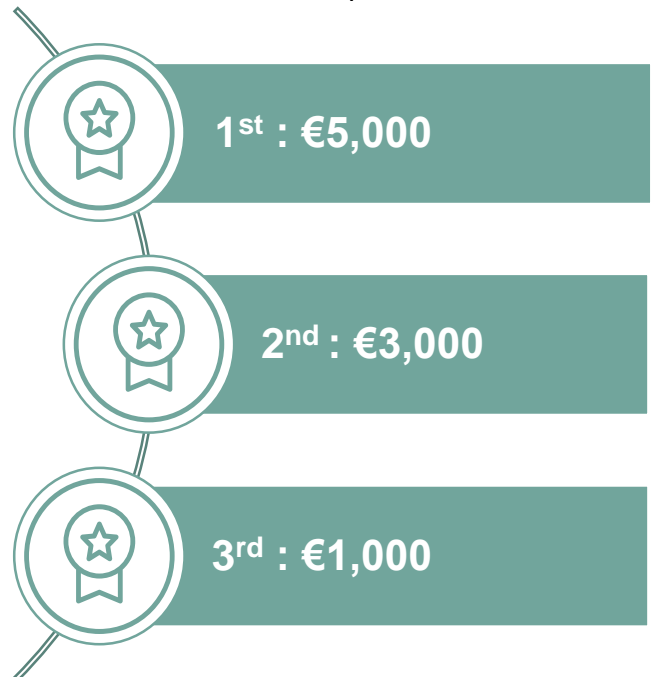
Applications should emphasise the following:

- ✓ Identification of patient flow problem/issue;
- ✓ Development and implementation of the solution;
- ✓ Teamwork, collaboration and integration;
- ✓ Evidence of impact/outcomes achieved; and
- ✓ Potential for scalability and transferability.



Funding Awards

The Patient Flow Academy, in collaboration with the Spark Innovation Programme, are delighted to introduce the Patient Flow Academy Excellence Awards. This initiative seeks to recognise and celebrate projects completed over the last five years which have improved patient flow. This initiative offers awards of up to €5,000.



The award funds are intended to be re-invested in the project or in a new innovation project related to patient flow. Applicants are required to indicate the intended use of the fund if successful.

Patient Flow Academy Excellence Awards

Types of Applications Sought

Applications are sought from frontline clinical and support staff in HSE and Section 38 services from across all disciplines (e.g. Consultants, NCHDs, Nurses, Health and Social Care Professionals, Patient Flow Coordinators, Discharge Coordinators, Bed Managers, Paramedics, Porters, ICT staff).

Applications are sought from acute and community services. Special consideration will be given to applications completed on an integrated service basis.

Applications are sought for projects already underway or completed post pilot or implementation.

Types of Projects

We are particularly interested in projects related to the following priority areas:

- Integrated Operations;
- Demand and Capacity Management/Analysis;
- Ward Processes;
- Integrated Discharge Processes;
- Older Persons and Frailty; and
- Length of Stay Reduction.

We also welcome applications for other projects related to patient flow.

Applications are accepted across acute and community services in all regions including:

- Urgent and Emergency Care Services;
- Scheduled Care;
- Children's Services;
- Mental Health Services;
- Disability Services; and
- Residential Services.

Special consideration will be provided to joint/integrated applications across services.

Background and Purpose of the Patient Flow Academy Excellence Awards

Patient flow is the ability of healthcare systems to manage patients effectively and with minimal delays as they move through stages of care.

Effective patient flow is essential to ensure all patients have the right access, to the right care, at the right time and in the right place with minimal waiting times.

The HSE Patient Flow Academy aims to improve patient flow by supporting health and social care staff to identify, define, and improve processes, pathways and systems for the safe, timely and effective delivery of care. This is driven by a culture of continuous improvement, collaboration and sharing of what works well for sites.

Provision of innovation and transformation supports is key to drive bottom-up innovation, transformation, and continuous improvement in patient flow. The HSE Patient Flow Academy and Spark Innovation are collaborating to provide these innovation supports. We are delighted to launch the HSE Patient Flow Academy Excellence Awards.

This initiative is designed to recognise and reward innovation in patient flow and to support collaboration and sharing of such improvement initiatives.

To facilitate sharing with colleagues, information on successful applicants will be presented with their funding award at the HSE Patient Flow Academy Conference due to be held on November 13th in Dublin. In addition, information on awarded projects will be shared on the HSE Patient Flow Academy website.

Applications should be collaborative, scalable and transferable to other similar services.

Applications must be made via the online application portal by close of business on the 30th September 2024.

[https://hse-
ie.libwizard.com/id/3519222bed93377406c8c0904df3ec97](https://hse-ie.libwizard.com/id/3519222bed93377406c8c0904df3ec97)



Please email any questions or queries to:

ncagl.acutehospitals@hse.ie

Patient Flow Academy Excellence Awards



Features of Applications Sought

Applications are sought from frontline clinical and support staff in HSE and Section 38 services from across all disciplines in acute and community services. Special consideration will be given to applications completed on an integrated service basis.

Applications should aim to detail the following information:

Identification of patient flow problem/issue

- Clearly defined patient flow problem.
- Identification of gaps, limitations or challenges in processes, systems and/or pathways impacting on patient flow.

Methodology for Solution Development and Implementation

- Methodology or process used to develop and implement the solution to the patient flow issue e.g. research, consultations, piloting, change management.
- Details on the new service, process, pathway, technology (hi or low tech) and its implementation to improve patient flow.
- Information on challenges/barriers encountered and how these were overcome.

Teamwork, collaboration and integration

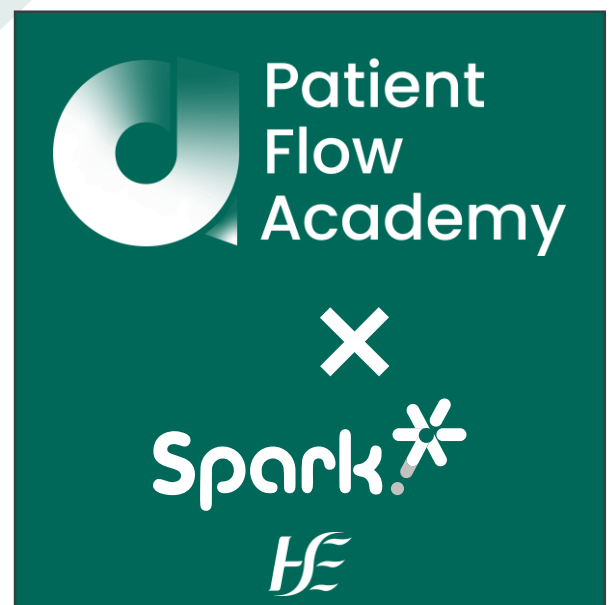
- Evidence of stakeholder engagement to develop and implement the solution.
- Project involved cross-disciplinary collaboration, cross-service collaboration or integration.

Evidence of impact/outcomes achieved

- Improved patient outcomes or patient experience.
- Improved service capacity.
- Improved service KPIs (Reduction in patient experience times, waiting lists, reduced length of stay, Delayed Transfers of Care).
- Improved staff experience.
- Improved value of care or reduction in costs.

Potential for scalability and transferability

- Project can be scaled up or adapted for use in other areas (other services, hospitals, community services).



Patient Flow Academy Excellence Awards

Eligibility criteria

Applications are sought from frontline clinical and support staff in HSE and Section 38 services from across all disciplines in acute and community services

Applications must be related to projects currently underway or completed in the **last five years**.

On receipt of your application your proposal will be checked for eligibility. Please note incomplete or ineligible applications will be rejected without further consideration.

Applicants will need to have discussed and received signed approval from their Operations Manager or equivalent to submit the project for consideration.

Marking Criteria

Eligible projects will be considered by a joint panel of experts from the HSE Patient Flow Academy and HSE Spark Innovation. Applications will be assessed on the following criteria:

Criteria	Description	Marks
MS1	Identification of patient flow problem or issue	15
MS2	Methodology used to develop and implement the solution	25
MS3	Teamwork, collaboration and integration	20
MS4	Evidence of impact/outcomes achieved	25
MS5	Potential for scalability and transferability	15

Funding

The highest funding awards will be allocated based on ranking according to the marking scheme.

Allocated funds should be used to re-invest in the submitted project or in a new project. Applicants are required to indicate how the awarded funding will be used, if successful, as part of the application.

Successful Applicants

Successful applicants will be issued with a Memorandum of Agreement (MOA) for completion. Applicants will also be required to indicate whether the funding award is intended to be invested in the existing project or a new project. Funding is subject to completion of a MOA before transfer of funds. Allocated funds must be drawn down within 6 months of signing the MOA. This should be signed by the applicant's line manager.

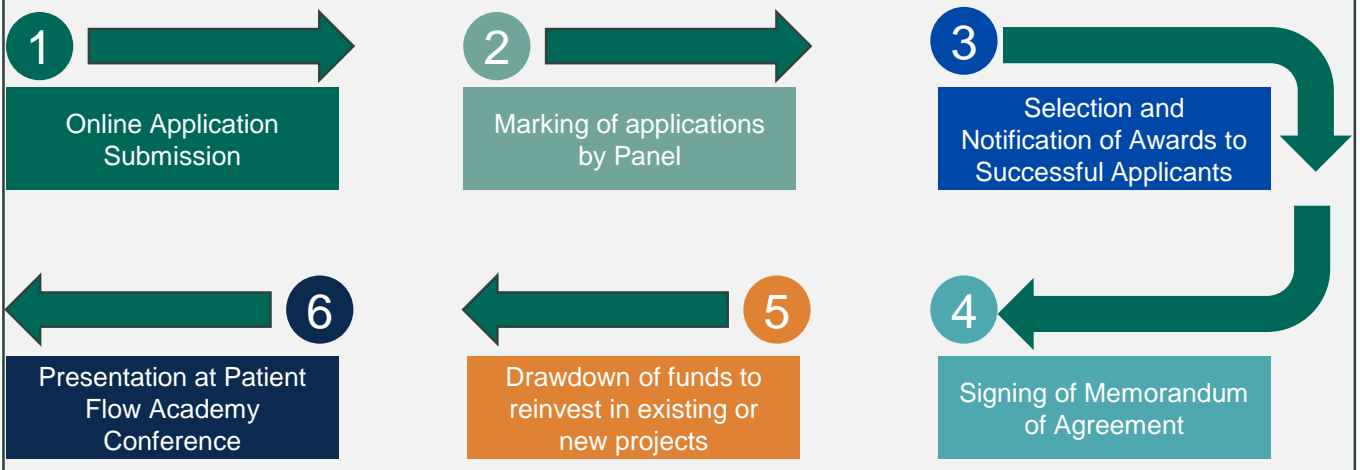
As part of this agreement, applicants will be expected to share the results of their project with the HSE Patient Flow Academy. Projects awarded funding will be invited to the HSE Patient Flow Academy conference on 13th November. Successful applicants will also submit a project synopsis for inclusion on the HSE Patient Flow Academy webpage.

For more information

<https://www.hse.ie/eng/about/who/national-services/patient-flow-academy/>

<https://healthservice.hse.ie/staff/spark-innovation-programme/>

APPLICATION PROCESS



HE

End