

ESS/MSS SAP Fiori Set Up & Registration

Checklist to get Started

- You must have access to two devices. **Device 1:**  **Device 2:** 
- For the purposes of these instructions Device 1 is the **smart phone or tablet** you will be using to have the NiSRP Self Service authentication set up on. Device 2 can be any device, **a laptop, desktop, smartphone or ipad** and will be used to register Device 1.
- Ensure you know your NiSRP Self Service User ID and Password
- Check Time/Date Setting is set to Automatic on the device you are registering .

For IOS Devices:




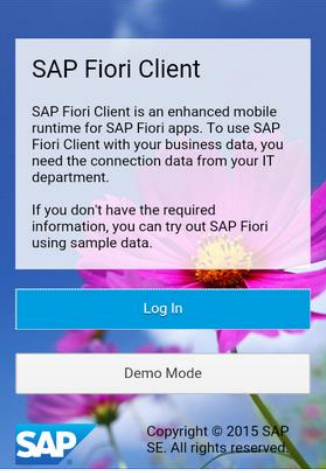

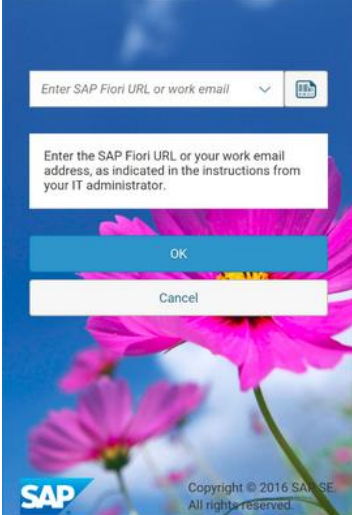
1. Go to Settings > General > Date & Time
2. Turn off Set Automatically

For Samsung/Andriod Devices:

1. Tap the Settings icon
2. Scroll down and tap General Management
3. Tap Date and **Time**
4. By default the date and **time** will be **set automatically** by the network....
5. Tap **Set Date**
6. Select the date and then tap Done
7. Tap **Set Time.**
8. Swipe up and down to **set** the **time** and then tap Done.



Use Device 1

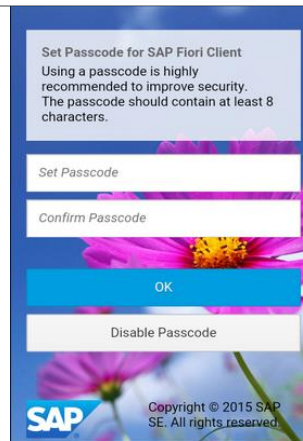
Step	Action
Download SAP Authenticator to Device 1	<p>Please search for “SAP Authenticator” on App Store (iPhone/iPad) or Google Play Store (Android Device) and click on get/install button.</p>  
Download Barcode Scanner (For Android Users Only) on device 1	<p>Please search for “Barcode Scanner” on Google Play Store (Android Device) and click on get/install button.</p> 
Download SAP Fiori App to device 1	<p>NOTE: You may have SAP Fiori Client already on your external device – if you have skip to the steps below to ensure the app is correctly configured.</p> <p>If you do not have SAP Fiori Client installed please search for “SAP Fiori Client” on App Store (iPhone/iPad) or Google Play Store (Android Device) and click on get/install button.</p>
Open SAP Fiori Client App and Log In	 <p>The screenshot shows the SAP Fiori Client splash screen. It features the SAP logo at the bottom left and the text: "SAP Fiori Client", "SAP Fiori Client is an enhanced mobile runtime for SAP Fiori apps. To use SAP Fiori Client with your business data, you need the connection data from your IT department.", "If you don't have the required information, you can try out SAP Fiori using sample data.", "Log In" (blue button), "Demo Mode" (white button), and "Copyright © 2015 SAP SE. All rights reserved."</p>
Enter SAP Fiori URL by scanning the QR code	<p>Click on  to enter QR Code</p>  <p>The screenshot shows the SAP Fiori Client app's URL entry screen. It features the SAP logo at the bottom left and the text: "Enter SAP Fiori URL or work email" (with a dropdown arrow and a QR code icon), "Enter the SAP Fiori URL or your work email address, as indicated in the instructions from your IT administrator.", "OK" (blue button), "Cancel" (white button), and "Copyright © 2016 SAP SE. All rights reserved."</p>

Scan QR code provided by system administrator (or enter URL)



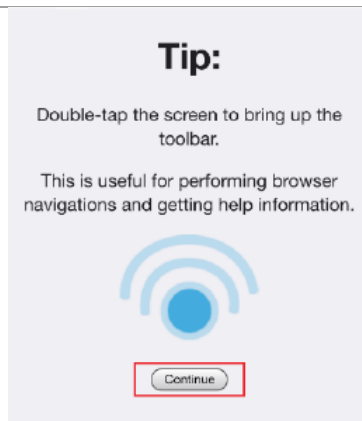
https://myhseelfservice.hse.ie/sap/bc/ui5_ui5/ui2/ushell/shells/abap/FioriLaunchpad.html?sapclient=900&saml2idp=prod_idp&idplogonurl=https%253a%252f%252fmyhseelfservice.hse.ie%252fsaml2%252fidp%252fso%253fsaml2sp%253dGW_PROD_SP%2526RelayState%253dfiori

Set app passcode or Disable Passcode
(Select Disable Passcode)



Select Disable Passcode and Click "OK"

Continue on "Tip" screen



Setup is completed and logon screen is displayed. Please proceed to next step to Register the device

SAP NetWeaver

 Log On with SAP Authenticator

User

Password

Log On



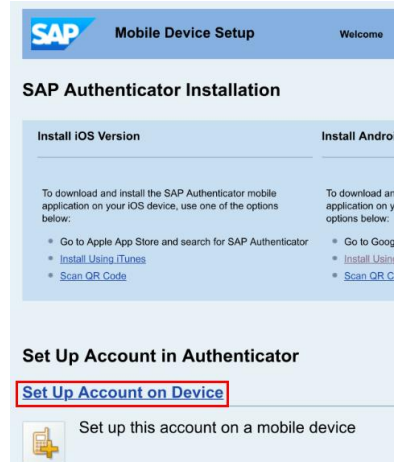
USE Device 2

From **Device 2** follow to Register Device

Enter URL into internet browser <https://myhseelfservice.hse.ie/otp>

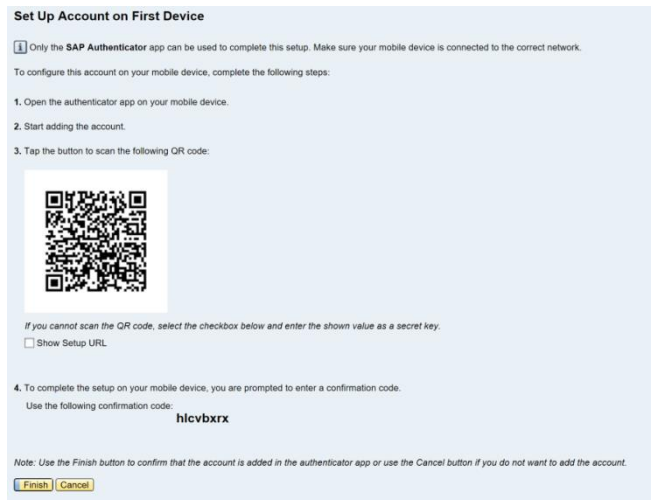
- Enter user name EXXXXXXXXX and password and click on Log On.

- Click on the button Set Up Account on Device



Below screen appears.

Proceed to next step below.





Use Device 1 & Device 2

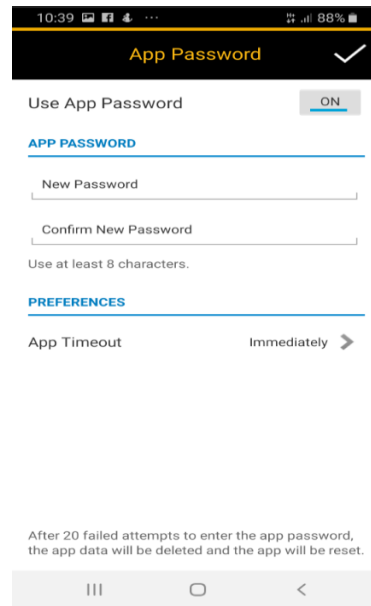
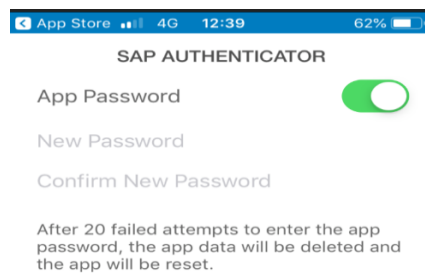
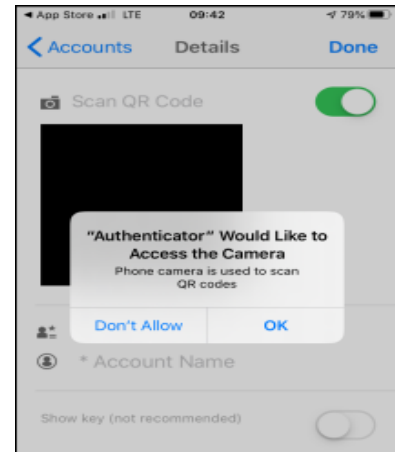
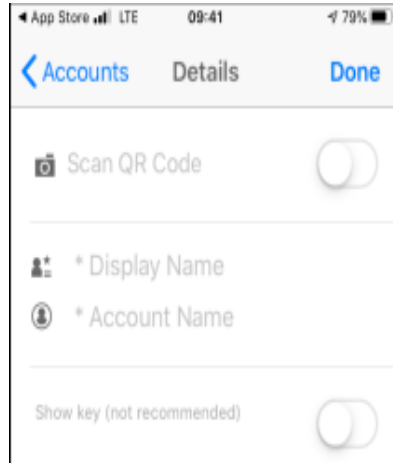
Open SAP Authenticator on Device 1

Open the SAP Authenticator on the device you are registering

Click on Start Set Up

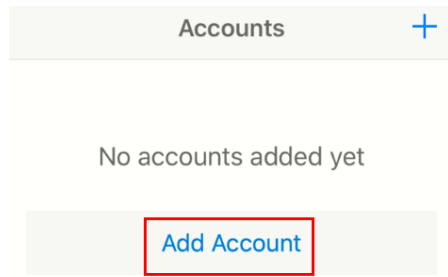
App Password Option Screen appears – Click off/Slide Off

Click Off/Slide Off (Screens below are from IOS)




Add Account

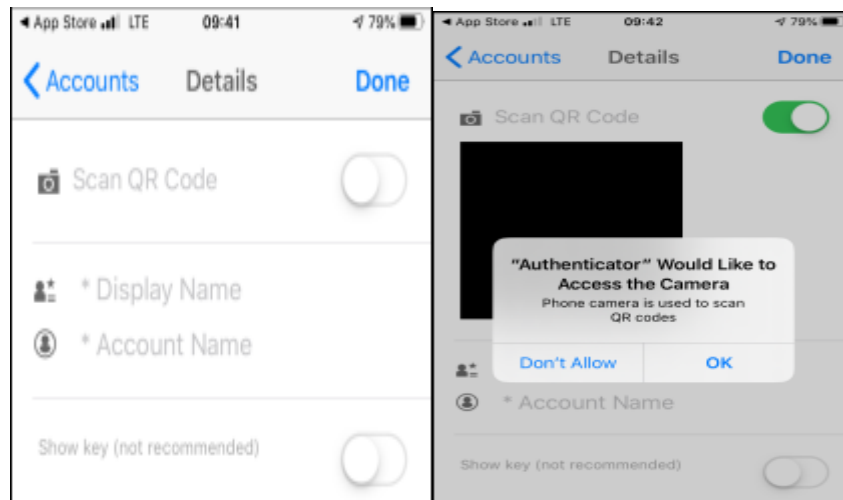
2. Click on Add Account



Scan QR Code on device 2

Click on Scan QR Code on Device 2 

Click on OK button for "Authenticator" Would Like to Access the Camera



Set Up Account on First Device

1 Only the SAP Authenticator app can be used to complete this setup. Make sure your mobile device is connected to the correct network.

To configure this account on your mobile device, complete the following steps:

1. Open the authenticator app on your mobile device.
2. Start adding the account.
3. Tap the button to scan the following QR code:



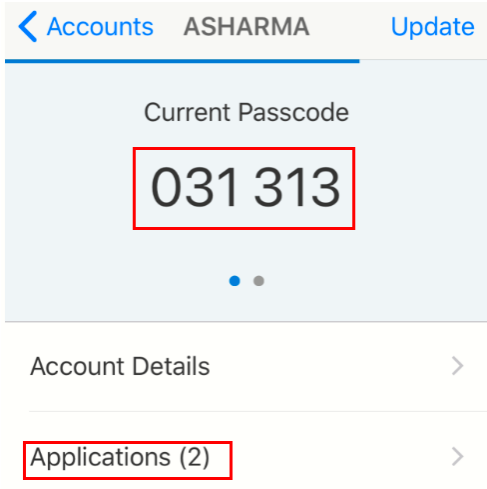
If you cannot scan the QR code, select the checkbox below and enter the shown value as a secret key.
 Show Setup URL


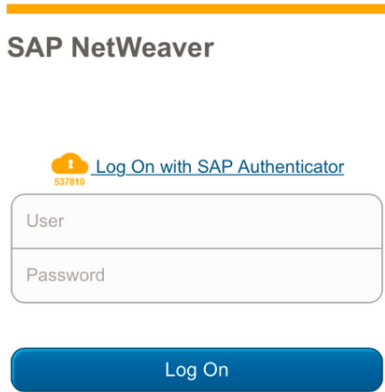
4. To complete the setup on your mobile device, you are prompted to enter a confirmation code.

Use the following confirmation code: **hlcvbrrx**

Note: Use the Finish button to confirm that the account is added in the authenticator app or use the Cancel button if you do not want to add the account.

- The confirmation Code from above screen needs to be entered and click on button **Finish**

	<p>Close out of this screen and proceed to Log On Screen.</p> <p>Proceed to SAP Fiori App</p> <p>(It is not necessary to take note of this passcode.)</p> 
--	--

<p>Proceed to Log On Screen on Device 1</p>	<p>Click on Log On with SAP Authenticator</p>  <p>Passcode accepted; enter your logon password</p> <p>Proceed to enter SAP Fiori Password</p> 
--	---

<p>Trust this Device</p>	<p>An option appears above the to Trust this device. By clicking on the “Trust this device” option - password will be saved for 90 days.</p> <p>This will allow you to logon without password entry. When you log back in you do not enter the user number and password, you just click on “Log on with SAP authenticator.”</p> <p>Once you logout of the app the password will have to be re-entered.</p>
---------------------------------	--