



National Health and Social Care Professions Office Newsletter



Welcome to Issue 14 of the National Health and Social Care Professions (HSCP) Office Newsletter. The National HSCP Office, established in 2017, is part of the HSE's Chief Clinical Officer Division.

Welcome from the National HSCP Lead

Welcome to our Summer newsletter from the National HSCP Office.

I hope that you are enjoying the longer days of summer and have an opportunity to have a break and some rest and relaxation.

I was really pleased to have had the opportunity through the Spring and into Summer to meet with many HSCP at different visits, meetings, workshops, events and conferences. It is always inspiring to have the opportunity to meet and hear about the excellent work and developments happening across the country and so important that your work is shared.

We have been continuing regular engagements to update and share information about priority areas of work with the professional bodies, representative organisations and the Universities. We have established a new national group with representatives of each of the Universities that provides entry to practice HSCP programmes. Each of the University Presidents has nominated a single point of contact for Health and Social Care Professions for their institution. This provides an excellent opportunity to enhance our collaboration and address areas of mutual interest.

As you will all be aware we are in the midst of a lot of change organisationally as the new Health Regions and associated structures are being stood up. Such change brings both challenge and opportunity. A very positive development for HSCP is the allocation of the 10 new funded posts mentioned in the previous newsletter. The investment is the first step in creating the required interlinked national and regional infrastructure to co-ordinate and support HSCP practice placement at the regional level. Each Health Region has been allocated a HSCP Regional Integration Development Lead post. These are the first HSCP leadership roles at a regional level and their remit will be to work with HSCP managers across the breadth of the Region. While the role has a wider remit, the first and top priority will be to support an increase in supply of HSCP students and future graduates with a focus on working within each region to increase capacity for practice placement and putting in place the necessary governance and coordination. Two of the Regions also have a funded HSCP Regional Practice Education Coordinator and two posts have been allocated to the National HSCP Office. The recruitment process for some of these posts is well underway. All 10 are to be recruited and in place by year end.

Finally for now to say that I hope you have seen the notices about the National HSCP Conference in Croke Park on 23rd October. The National Office team is working very hard to design an interesting and exciting day of sharing and learning with the theme of Working in Partnership. The call for abstracts is open and we are really looking forward to seeing as many of you as possible in October.

Inside the newsletter you will find updates from the team on key areas of work, I hope you enjoy the read and find it helpful.

Enjoy the rest of the summer!

Jackie Reed

Practice Education Update

In May/June 2024 we ran a series of webinars introducing the National Interprofessional Placement Evaluation Tools which support implementation of the National **Health and Social Care Professions Quality Framework for Sustainable Practice Education (2022)**. There is now a series of videos explaining and offering advice on how to use these Tools which can be accessed on the HSE website:

1. NIPPET—HEI
2. NIPPET—Student
3. NIPPET—Practice Educator
4. NIPPET—Service User
5. NIPPED (National Interprofessional Practice Educator Development) - Practice Educator
6. NIPPECS (National Interprofessional Practice Education Capacity and Sustainability)



We hope that these videos will support you in providing quality practice placements.

We plan to capture how HSCP are implementing these tools.

Building Competence and Confidence Ann Parker Training©

The First cohort of facilitators delivered stage 1 training in May—congratulations to all. Further *Day 2 training* is planned for September and further training in Spring 2025. We will send invitations via email. This training is designed to support HSCP increase their competence and confidence in providing placements. The programme is highly interactive and the feedback from participants is consistently excellent.

We encourage **all HSCPs to take a student in 2024/2025**. This is a vital part of ensuring the workforce of the future as they will be your future work colleagues.

Advanced Practice Update

HSCP Education and Credentialing Pathway for Health and Social Care Professions Advanced Practice.

Work is continuing on the finalisation of the National HSCP Office commissioned report on an Education and Credentialing Pathway for Health and Social Care Professions Advanced Practice. This report will be shared with the Department of Health on completion.

Radiographer Sonographer Advance Practice Pilot Programme

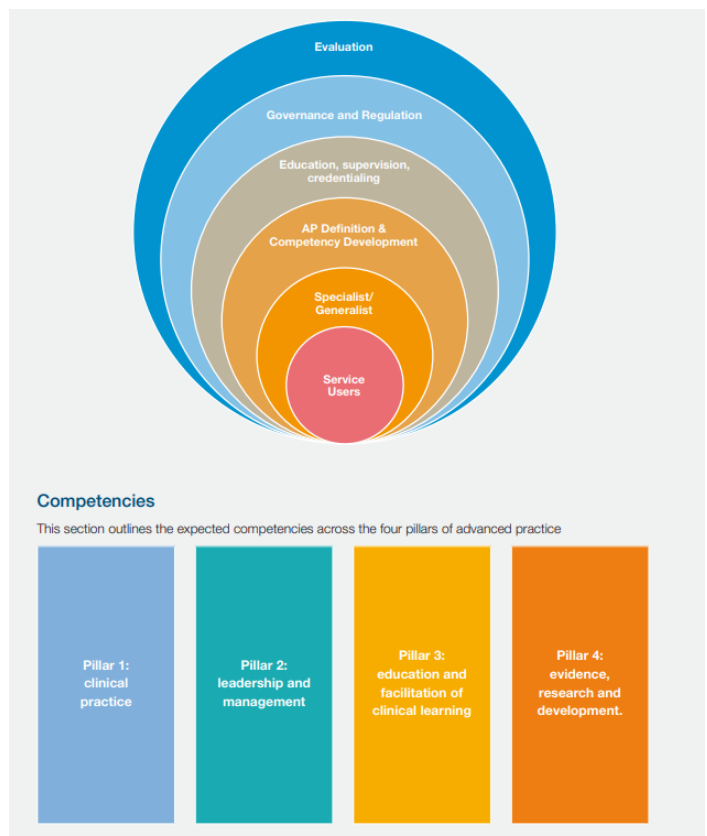
A pilot project in radiography sonography, as part of the Radiography Review, has demonstrated the efficacy of sonographers reporting. A total of 6037 ultrasound examinations were included in the audit and over 99% of the reports fell into the acceptable range of Grades 1 and 2. Work is ongoing to support implementation. The National HSCP Office is engaging with the Oversight and Working Group and partners in the HSE and DoH to implement this project.

Physiotherapy Referral for Radiological Procedures

In July the Minister for Health announced the establishment of an education programme for physiotherapy prescribing of ionising radiation. The National HSCP Office is working with the DoH, National Director for Integrated Care, CORU, Chief HSCP Officer and others to support the implementation of this initiative.

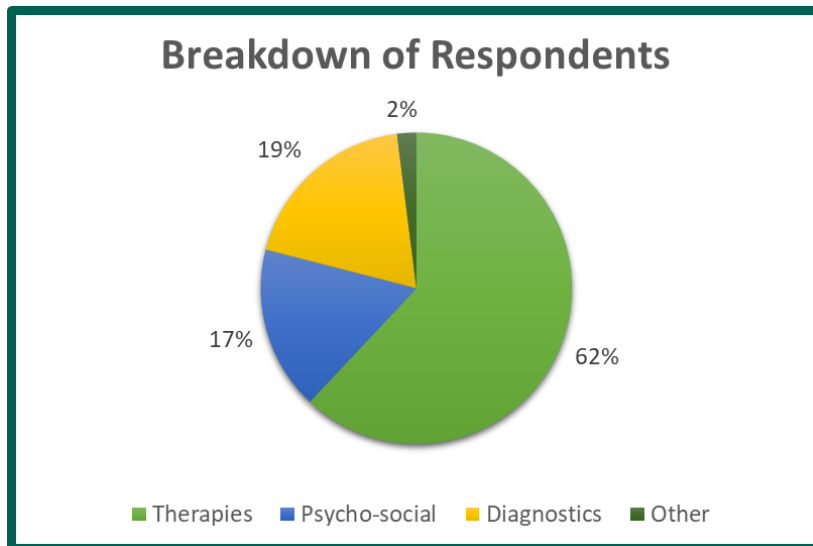


HSCP Advanced Practice Framework



Professional Development Update

A survey of HSCPs was carried out in spring 2024. A total of 1482 responses were received, approx. 7.5% of HSCP workforce. :



- Forms of Training Preferred
1. Short Courses
 2. Study Days
 3. Conferences

- Top Areas of Training Desired
1. Specific Clinical Areas
 2. Leadership Skills
 3. Practice Education

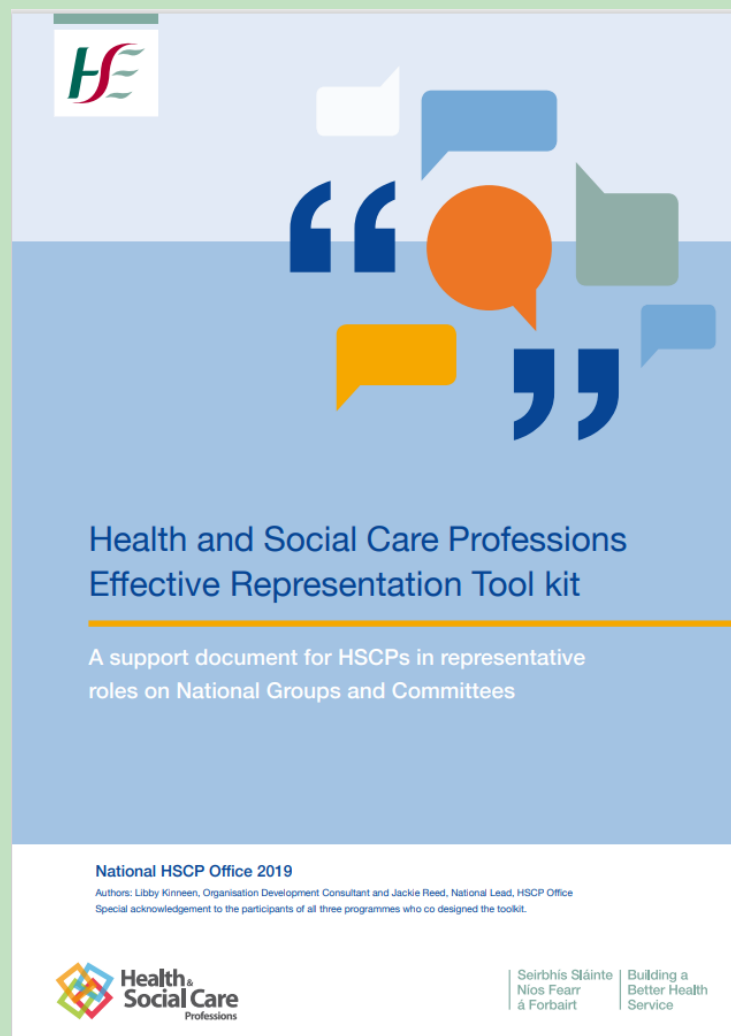
- Update on HSCP Post-Graduate Funding 2024
- >100 courses offered across 15 educational institutes
 - >100 applications received
 - >600 HSCP offered funding for training opportunity

Professional Supervision Train the Trainer

A Professional Supervision Train the Trainer 4 day course will take place in Oct/ Nov 2024 in Dublin. This course is open to anyone who has completed the HSCP Office training 'Professional Supervision Training for Supervisors' and would like to become a trainer for their region. Please email cpd.hscp@hse.ie if you would like more information.

Clinical Advisory News

- Work is on-going with leads of all clinical programmes to fill any gaps in HSCP representation.
- Continuous engagement with new and existing representatives to support them in their roles. The Health and Social Care Professions Effective Representation Tool Kit was developed to support HSCPs in representative roles. It can be accessed which on the HSE website.



HSCP Conference Wednesday 23rd October 2024

CALL FOR ABSTRACTS

HSCP CONFERENCE 23 OCTOBER 2024

Following on from our 'Save the Date' announcement, the National Health and Social Care Professions office is delighted to invite submissions for abstracts with a focus on partnership and collaboration.

Abstracts to be submitted by the 12th August via Link Above

Any queries please email hscp.nationaloffice@hse.ie

We are now accepting abstract submissions for this year's HSCP Conference which takes place on 23rd October, 2024.

The theme for the Conference is **“Working in Partnership and Collaboration”** and abstract submissions are invited under the following categories:

Working in Partnership – Leadership & Management

Working in Partnership- Clinical Practice

Working in Partnership – Evidence, Research & Development

Working in Partnership- Education and Facilitation of Clinical Learning (Practice Education)

The submission portal is open **until 12th August, 2024** and can be accessed at the following [link](#) here you will also find further information on the submission process.

We will be in touch when registration for the conference opens in coming weeks.

HSCP hub on www.hseland.ie

hscp.nationaloffice@hse.ie

@WeHSCPs