



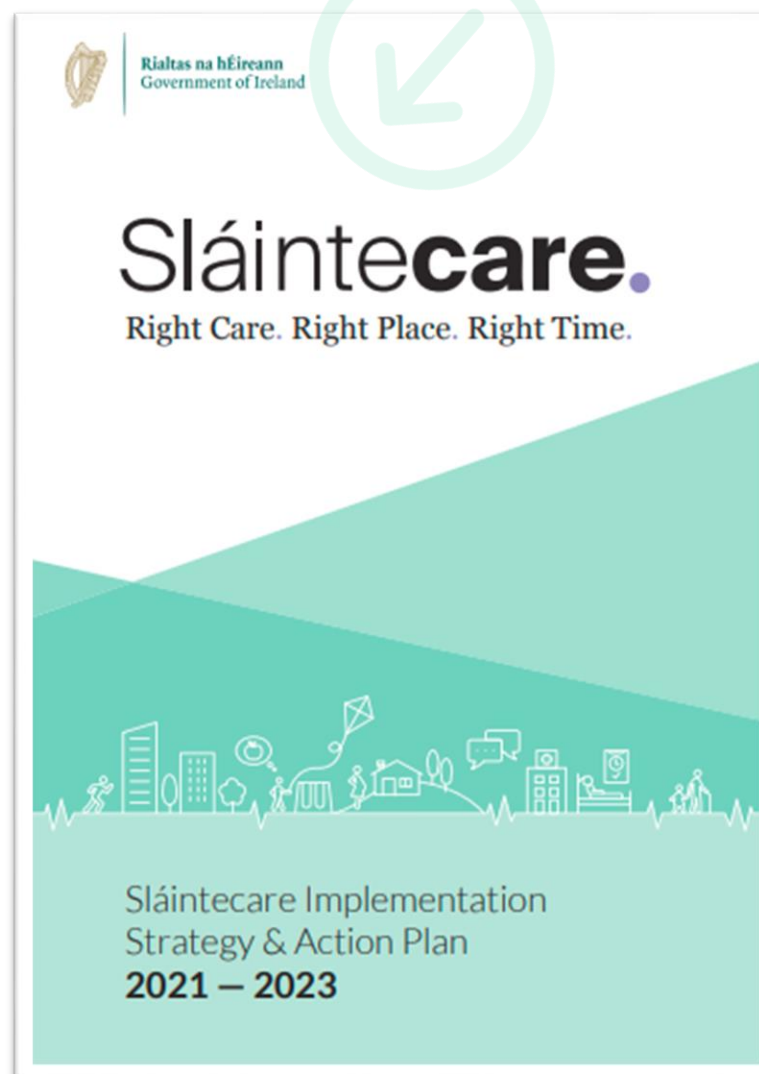
An Roinn Sláinte  
Department of Health

# Clinical Design: A Policy Perspective

National Clinical Programme Conference  
18th September 2024

Siobhán McArdle , Assistant Secretary  
Social Care, Mental Health, Drugs Policy and Unscheduled  
Care

# Sláintecare



Sláintecare is the most significant reform programme in Ireland's Health Sector and one of the most significant reform programmes in the history of the State

- Oireachtas Committee on the Future of Healthcare's report published in May 2017
- Sláintecare Initiation Phase 2018 - 2020
- Sláintecare Foundational Phase 2021 - 2023
- Sláintecare Major Reform Delivery Phase 2024 - 2027

# Sláintecare Progress



## Improving Access



**Waiting List Action Plan**  
In 2023 our health service has treated many more patients



The number of patients on trolleys in '23 is down versus '22 – a 22% reduction for the 2<sup>nd</sup> half of 2023 versus the same period in 2022



22.1 million **home care** hours provided in 2023



There are now 174 **Primary Care Centres**



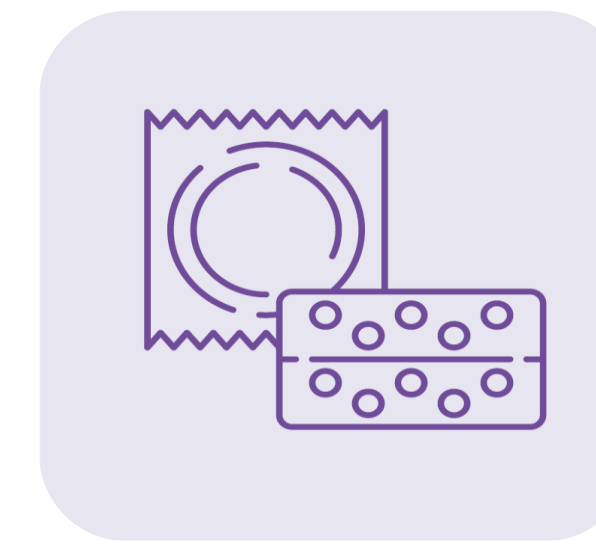
## Expanding Eligibility



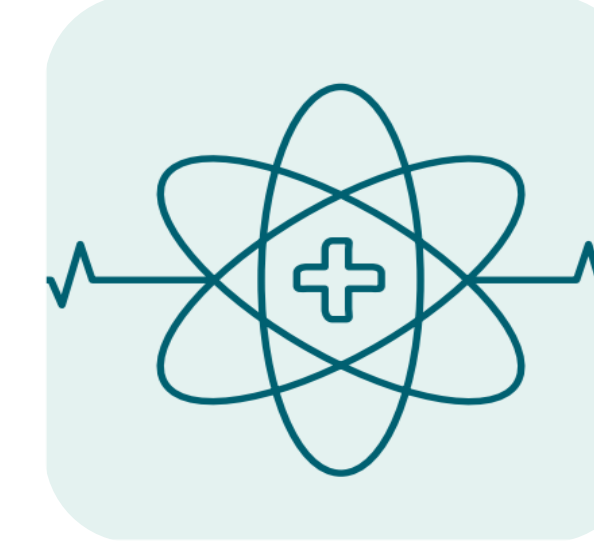
**Expansion of GP care**  
500,000 more people became eligible for free GP Care in 2023



**Abolition of Public Hospital In-Patient Charges**  
Public hospital in-patient charges for adults were abolished in April 2023 – saving patients up to €800 per year



**Free Contraception**  
The free contraception scheme was extended throughout 2023 and 2024 and is available to all women aged 17 – 35



State-funded **IVF** rolled out in September 2023

# Sláintecare Progress *(continued)*



## Reforming



**HSE Health Regions** Implementation Plan published in July 2023  
Regional Executive Officers recruited



**Health Information Bill**  
Bill passed in July 2024



**Public-only Consultant Contract**  
– over 2,500 hospital consultants have signed or switched to the PCCC

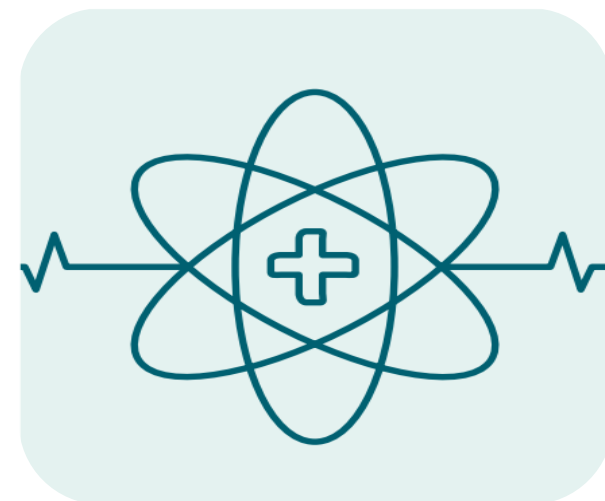


**ECC**  
96 planned CHNs, 28 CSTs for Older People and 26 Community Specialist Teams for CDM are operational



**HSE Patient App**  
In development

## Improving Quality/ Safety



**Sláintecare Integration Innovation Fund**  
106 of 123 projects are receiving recurring funding following Round 1. Rounds 2 and 3 are currently operational



**Healthy Ireland** Strategic Action Plan 2021 – 2025 launched, providing clear roadmap of how we can continue to work together to bring about good health and wellbeing



**Stakeholder Engagement**  
Significant engagement with service user, patients and workforce fora



# Sláintecare Progress *(continued)*



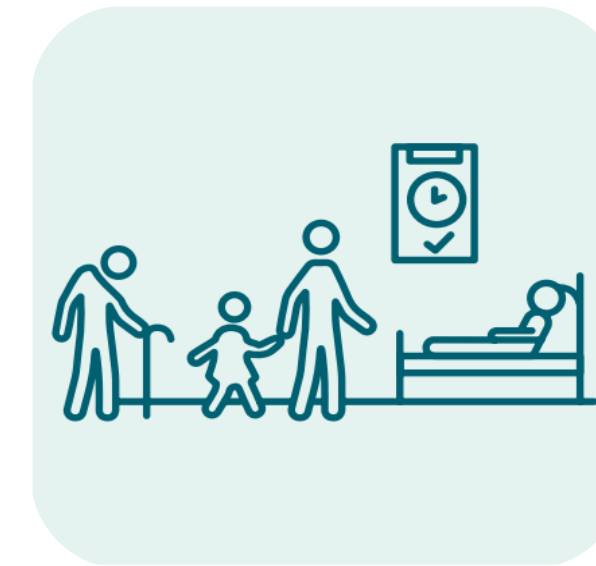
Improving  
Capacity



**New Elective Hospitals** Cork, Galway, and Dublin in design phase. The government approved developing '**surgical hubs**' in Cork, Galway, Limerick, Waterford and Dublin



**National Forensic Mental Hospital** Portrane opened in November 2022



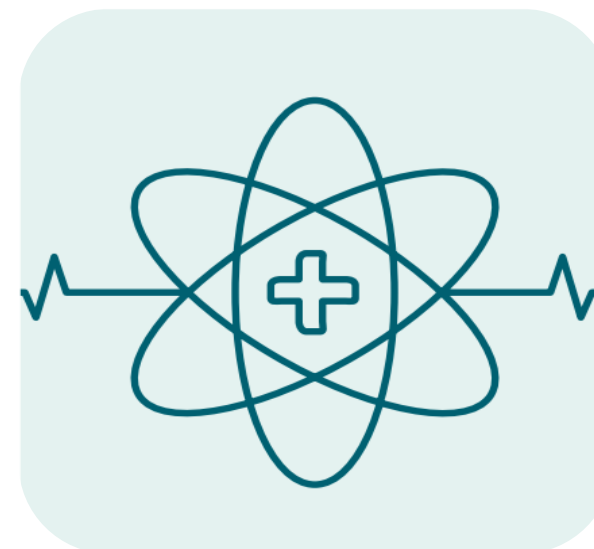
Enabling works for the **National Maternity Hospital** have commenced and the tender process for the full build is underway



**Major Trauma Centres** at the Mater Misericordiae University Hospital, Dublin and Cork University Hospital were opened in April 2023, in line with the vision of the national trauma strategy 'A Trauma System for Ireland'



More **student places** across numerous healthcare disciplines have been provided, along with more training places



Workforce increase from under **120,000 (2019)** to **almost 150,000** in 2024



GP training places have progressed to the point where for every GP retiring, **1.5 to 3 GPs** are now entering practice

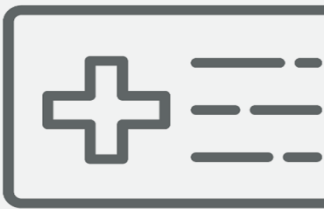
# Sláintecare: Next Steps



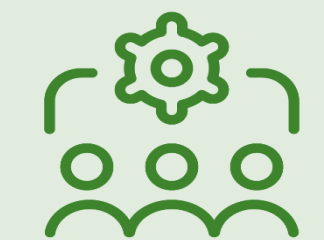
**Access** - Measures to strengthen access and ensure right care at the right time and place (e.g. urgent care, waiting lists, ECC)



**Patient Safety, Quality, Prevention, and Social Inclusion** – Measures to optimise service delivery, improving service quality standards, operational efficiencies, responsiveness to patient needs and enhanced safety measures for patients and service users (e.g. patient safety & quality, prevention & promotion and patient engagement)



**Eligibility & Affordability** – Measures to reduce costs for service users



**Capacity** – Measures to expand the resources and capabilities available to the healthcare system, including workforce and infrastructure, to increase available capacity (e.g. strategic workforce planning, health infrastructure including elective hospitals and surgical hubs)



**Reform** – Measures that integrate and enhance service delivery, enabled by reorganising services and greater use digital and innovation (e.g. HSE Health Regions, Digital Health Transformation and Public Health Reform)





# Mental Health: A Policy Perspective



**Domain 1: Promotion, Prevention and Early Intervention**

**Domain 2: Service Access, Coordination and Continuity of Care**

**Domain 3: Social Inclusion**

**Domain 4: Accountability and Continuous Improvement**

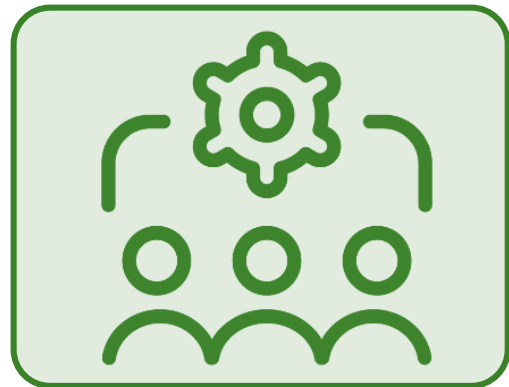
# National Clinical Programmes: Heat Map



Model of Care	CHO 1	CHO 2	CHO 3	CHO 4	CHO 5	CHO 6	CHO 7	CHO 8	CHO 9
ADHD	Green	White	Blue	Blue	White	Blue	Yellow	Yellow	White
Early Inter. Psychosis	Green	White	White	Green	White	Green	White	Green	Yellow
Dual Diagnosis	White	White	Yellow	Yellow	White	White	Green	White	Green
Eating Disorders	Green	Green	White	Blue	Green	Blue	Green	Green	Green
Self Harm & Suicide	Blue	Blue	Blue	Blue	Blue	Blue	Blue	Blue	Blue
MHS Older People	Green	White	White	White	White	Green	Green	Green	White
Perinatal MH	Blue	Blue	Blue	Blue	Blue	Blue	Blue	Blue	Blue
MHID Adults	Green	Green	Green	White	Green	Green	Green	Green	Green
MHID CAMHS	White	Green	White	Green	Green	Green	White	Green	White



# National Clinical Programme: Eating Disorders



**Capacity:** 10 new specialist Eating Disorder Teams  
Funding for 100 new posts

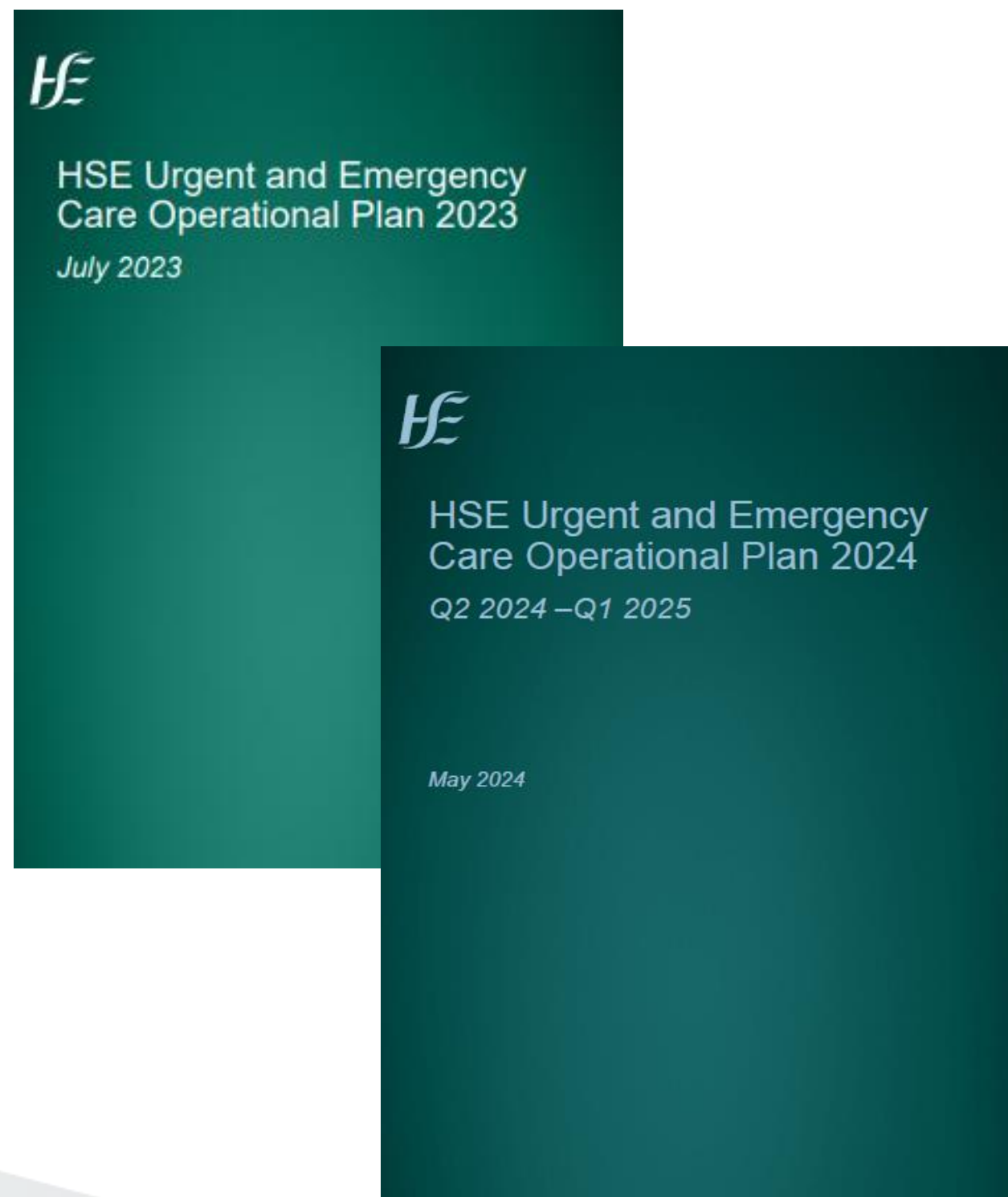


**Access (2023):** 669 referrals received  
449 assessments (97% increase on 2022).  
77% of referrals were assessed within 8 weeks  
84% started treatment within 8 weeks of the assessment.



**Quality:** Unmet need in community beginning to be met

# Urgent and Emergency Care Plans



A programme of service improvement and reform, with a focus on the integration of community and hospital services to optimise patient flow, to improve quality and patient safety, and to provide the right care, in the right place, at the right time. Comprises four pillars:

- Hospital Avoidance
- ED Operations
- In- Hospital Care Delivery
- Discharge Management



### UEC Activity July to December 2023 vs 2022

#### ED Attendances

↑ 1.2%

8,849 extra patients attended EDs

#### ED Admissions

↑ 4.6%

5,644 extra patients admitted to EDs

#### ED Attendances >75 yrs

↑ 8.4%

8,324 extra >75 patients attended EDs

#### ED Admissions >75 yrs

↑ 7.2%

3,702 extra >75 patients Admitted to EDS

### UEC KPI Performance July to December 2023 vs 2022

#### 8am Trolley Count

↓ 2.3%

1,304 less patients on trolleys

#### Delayed Transfers of Care

↓ 18.7%

On average 114 less patients on the daily DTOC list.

#### >75 yrs 24hr PET Breaches

↓ 38.6%

4,594 less >75 yrs patients waiting >24hrs

#### Length of Stay >14 Days

→ 0.0%

down 0 days for patients >14 days





An Roinn Sláinte  
Department of Health

# Clinical Design: A Policy Perspective